

LEGEND			
SYMBOLS	SCOPE OF WORK REQUIRED	PROPOSED PROJECT	LOCATION
B1	Reconstruction of Bridge	Maculcol Bridge for Reconstruction	Sto. Tomas River
B2	Reconstruction of Bridge	Bucao Bridge for Reconstruction	Bucao River
B3	Reconstruction of Bridge	Maloma Bridge for Reconstruction	Maloma River
R1	Reconstruction of Road	Access Road for Place of Residence at Upper Stream (Community Road)	R1-1-1) along Sto. Tomas River R1-1-2) to Mapanuepe Lake R1-2-1) along Bucao River R1-2-2) along Balin-Baquero River R1-3) along Maloma River
R2	New Construction of Road	Tourist Road for Crater Lake at Mt. Pinatubo	R2) for R1-1-1 & R1-3
R3	New Construction Road	Plan of Province of Zambales	R3-1) Zambales-Tarlac Road R3-2) Zambales-Pampanga Road

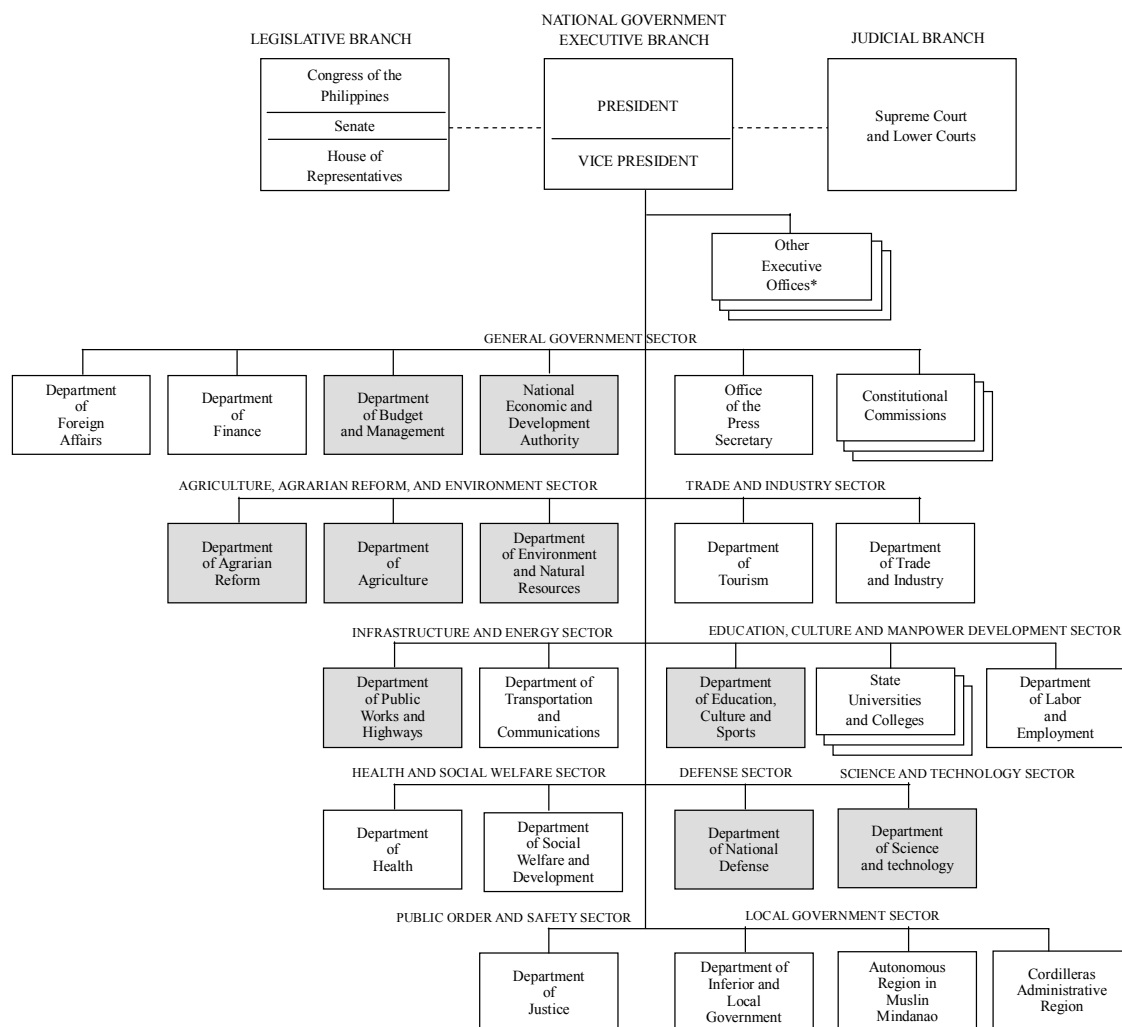
THE GOVERNMENT OF THE PHILIPPINES
THE DEPARTMENT OF PUBLIC WORKS AND HIGHWAYS

**The Study on Sabo and Flood Control for
Western River Basins of Mount Pinatubo in the
Republic of the Philippines**

JAPAN INTERNATIONAL COOPERATION AGENCY

Figure 3.9.1

**Location of Proposed Master Plan for Road
and Bridge Construction**



* Other Executive Offices

- | | | | |
|---|--|---|--|
| 1. Commission on Philipinos Overseas | 11. Movie and Television review and Classification Board | 19. Office of Energy Affairs | 29. Presidential Commission for the Urban poor |
| 2. Commission on Population | 12. Metropolitan National Authority | 20. Office of Muslim Affairs | 30. Presidential Committee on the Philippine Nuclear Power Plant |
| 3. Commission on Privatization | 13. National Commission on the Role of Philippino Women | 21. Office of the Northern Cultural Communities | 31. Presidential Council on Youth Affairs |
| 4. Cooperatives Development Authority | 14. National Computer Center | 22. Office of the Peace Commissioner | 32. Presidential Legislative Liaison Office |
| 5. Energy Regulatory Board | 15. National Intelligence Coordinating Agency | 23. Office of the Southern Cultural Communities | 33. Presidential Management Staff |
| 6. Games and Amusement Board | 16. National Security Council | 24. Philippine xxxx Commission | 34. Securities and Exchange Commission |
| 7. Government Corporate Monitoring and Coordinating Committee | 17. National Statistical Coordination Board | 25. Philippine Racing Commission | 35. Videogram Regulatory Board |
| 8. Housing and Land Regulatory Board | 18. National Stand Farm | 26. Philippine Sports Commission | |
| 9. Housing and Urban Development Coordinating Council | | 27. Presidential Commission on Culture and Arts | |
| 10. xxxxx Special Development Authority | | 28. Presidential Commission on Good Government | |

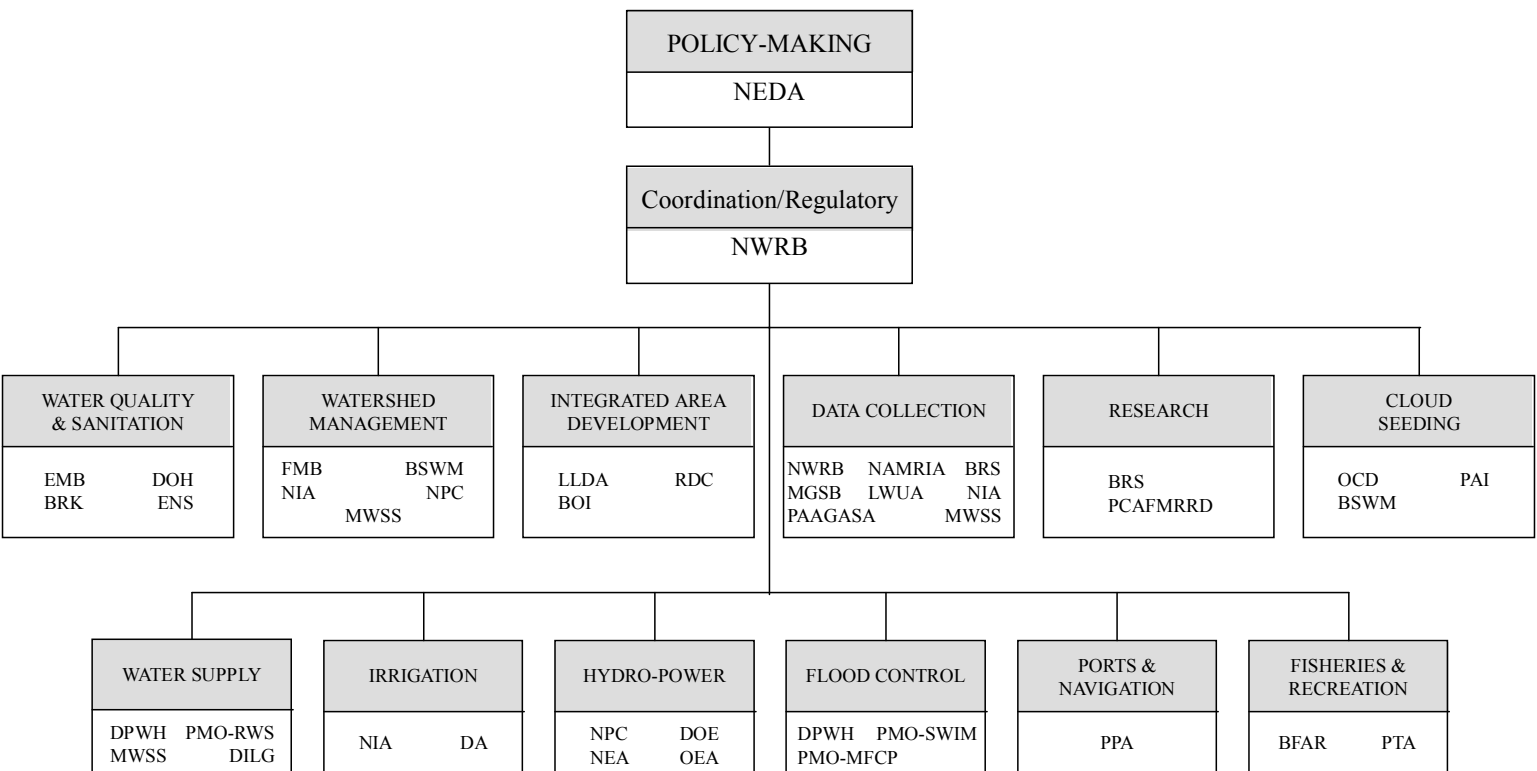
THE GOVERNMENT OF THE PHILIPPINES
THE DEPARTMENT OF PUBLIC WORKS AND HIGHWAYS

**The Study on Sabo and Flood Control for
Western River Basins of Mount Pinatubo in
the Republic of the Philippines**

JAPAN INTERNATIONAL COOPERATION AGENCY

Figure 3.11.1

**Organization Chart of the Philippine
Government**

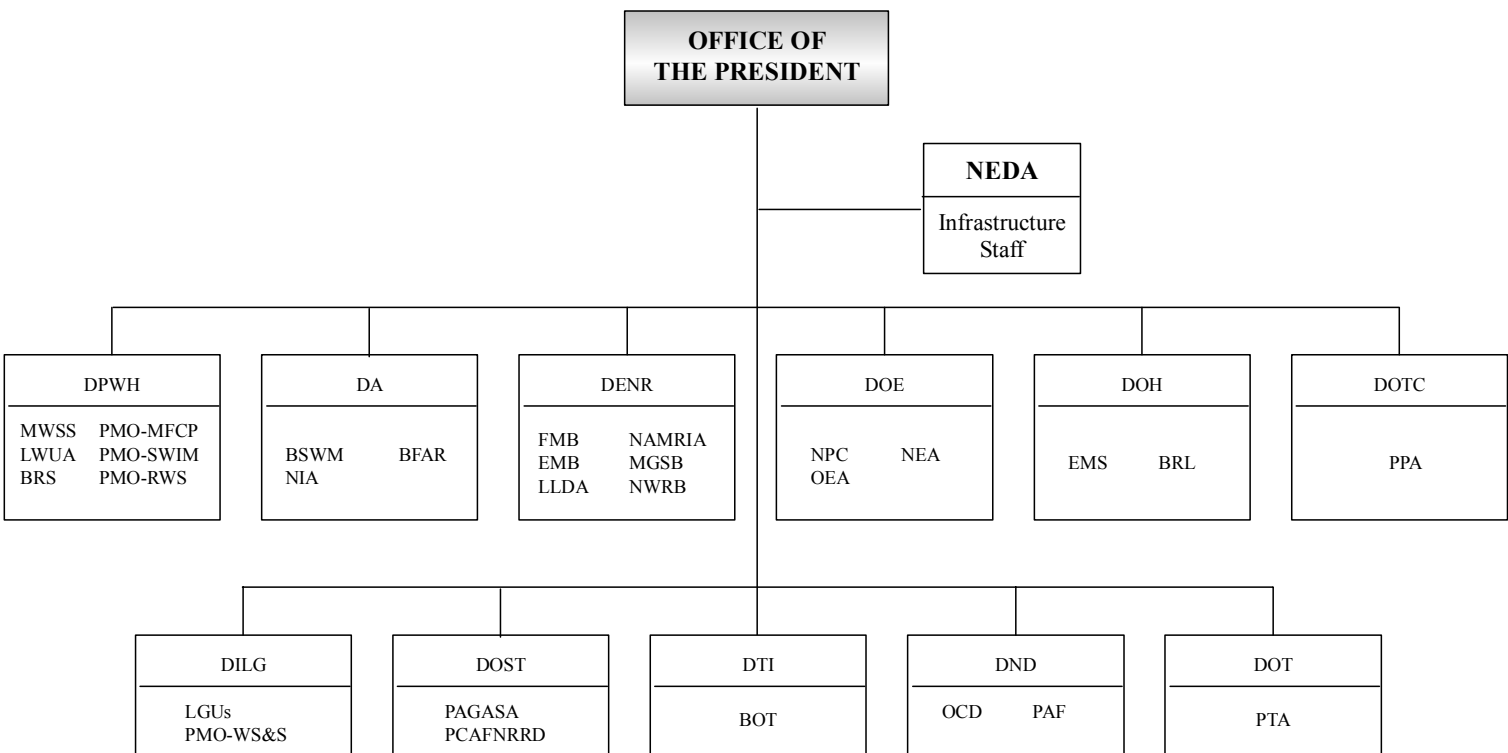


THE GOVERNMENT OF THE PHILIPPINES
THE DEPARTMENT OF PUBLIC WORKS AND HIGHWAYS

The Study on Sabo and Flood Control for
Western River Basins of Mount Pinatubo
in the Republic of the Philippines

JAPAN INTERNATIONAL COOPERATION AGENCY

Figure 3.11.2
**Functional Relationship for Water
Related Activities**



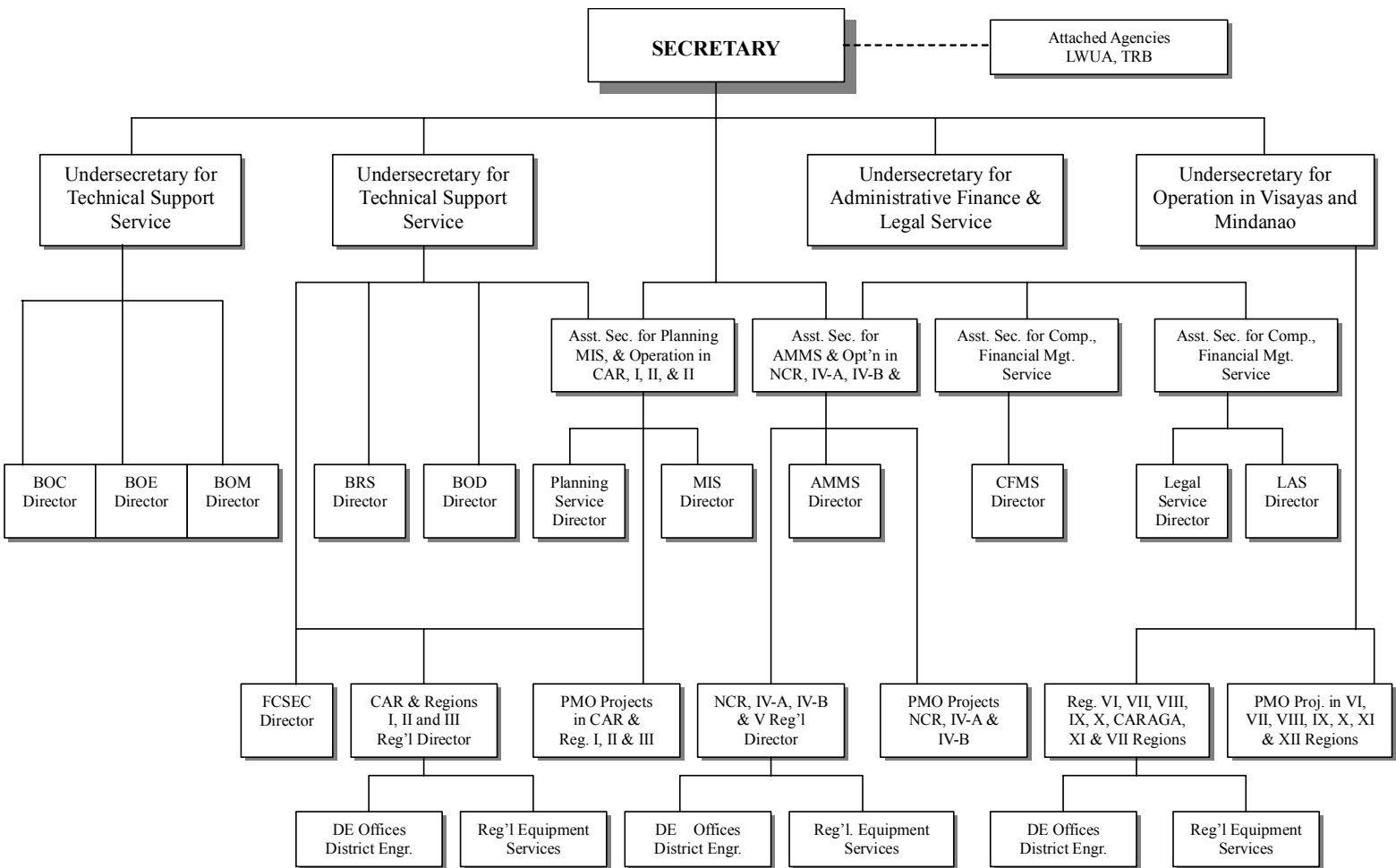
THE GOVERNMENT OF THE PHILIPPINES
THE DEPARTMENT OF PUBLIC WORKS AND HIGHWAYS

**The Study on Sabo and Flood Control for
Western River Basins of Mount Pinatubo
in the Republic of the Philippines**

JAPAN INTERNATIONAL COOPERATION AGENCY

Figure 3.11.3

**Organizational Relationship for Water Related
Activities**



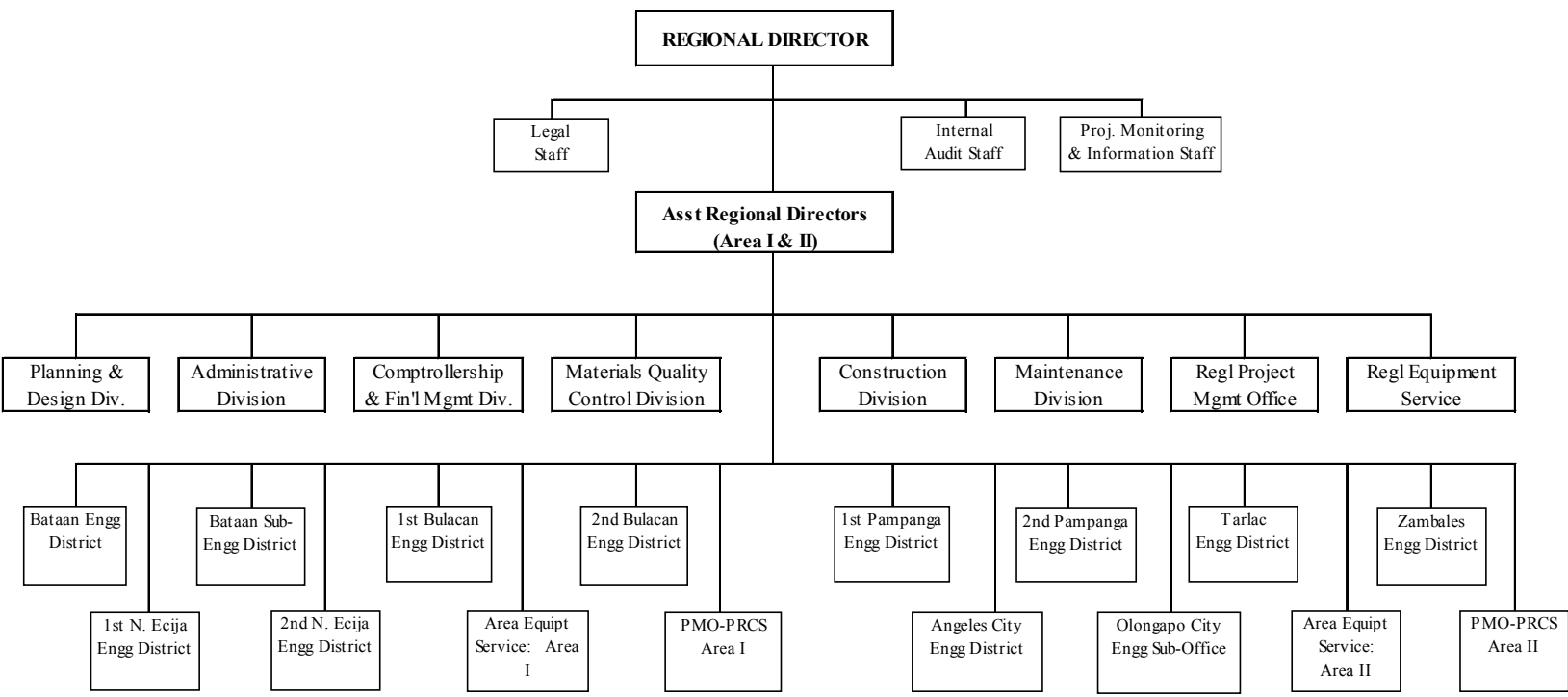
THE GOVERNMENT OF THE PHILIPPINES
THE DEPARTMENT OF PUBLIC WORKS AND HIGHWAYS

**The Study on Sabo and Flood Control for
Western River Basins of Mount Pinatubo
in the Republic of the Philippines**

JAPAN INTERNATIONAL COOPERATION AGENCY

Figure 3.11.4

**Department of Public Works and Highways
Central Office**



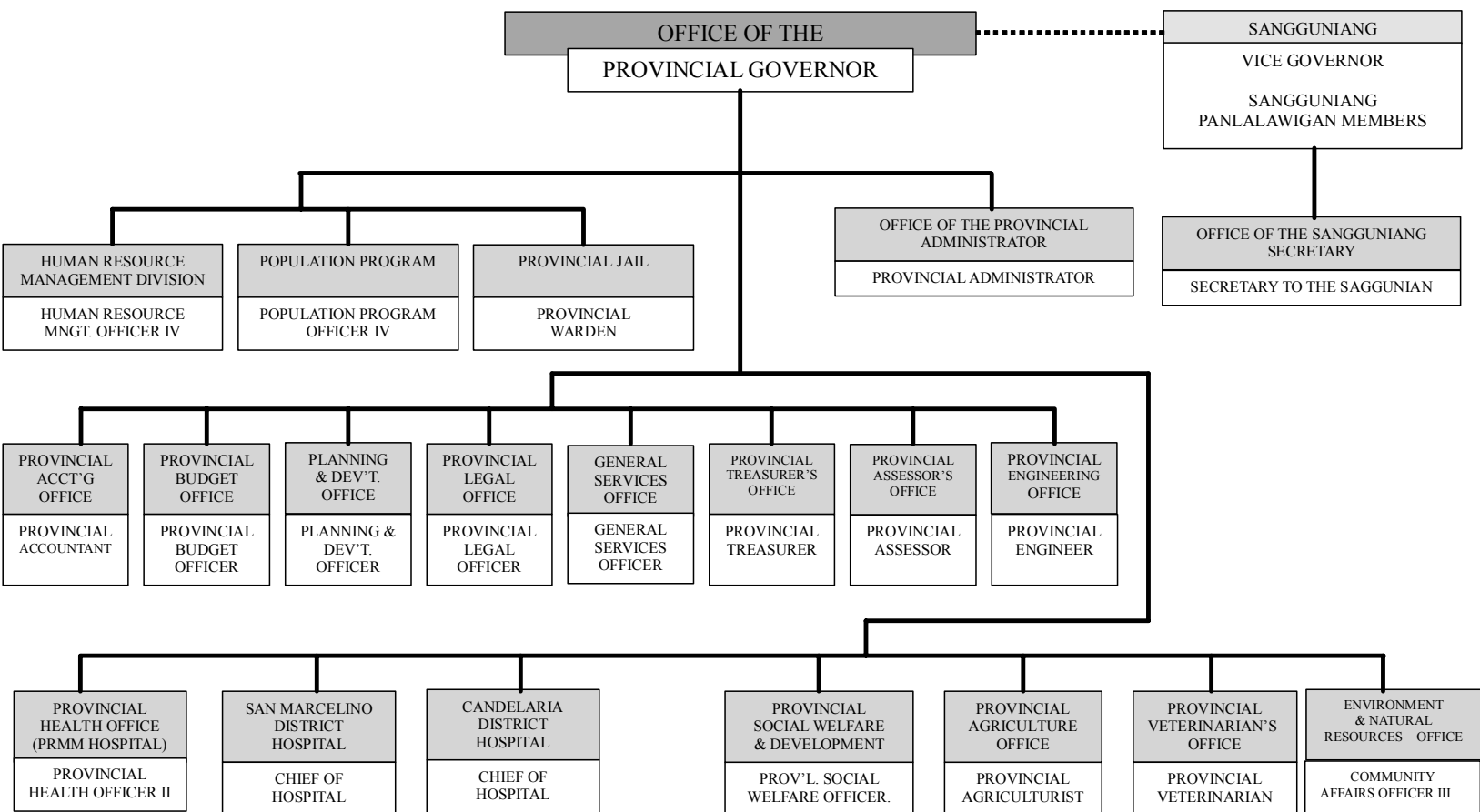
THE GOVERNMENT OF THE PHILIPPINES
THE DEPARTMENT OF PUBLIC WORKS AND HIGHWAYS

**The Study on Sabo and Flood Control for
Western River Basins of Mount Pinatubo
in the Republic of the Philippines**

JAPAN INTERNATIONAL COOPERATION AGENCY

Figure 3.11.5

**Department of Public Works and Highways,
Region III**



THE GOVERNMENT OF THE PHILIPPINES
THE DEPARTMENT OF PUBLIC WORKS AND HIGHWAYS

The Study on Sabo and Flood Control for
Western River Basins of Mount Pinatubo
in the Republic of the Philippines

JAPAN INTERNATIONAL COOPERATION AGENCY

Figure 3.11.6

Organization of Zamboanga Provincial Government

Upstream

Issues / Needs after the Eruption

- 1) High vulnerability of Communities due to Poverty
- 2) Destroyed life style and culture of Aeta Tribe
- 3) Basin Degradation due to de-forestation
- 4) Water Pollution due to Mining Activities

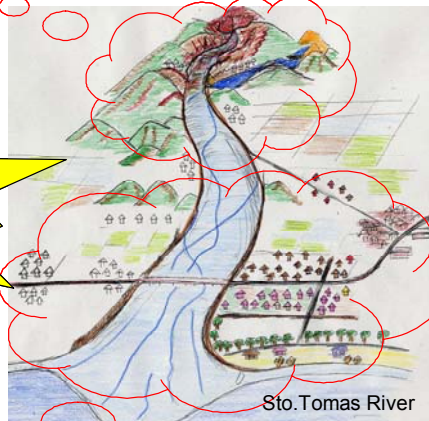
Upstream

Measures to be Taken

- 1) Poverty Reduction Program
- 2) Recovery and Preservation of Aeta Tribe
- 3) Community Based Forest Management
- 4) Watershed Management

For Poverty Reduction
And
Environmental Management

Issues in upstream
would increase
potential risk for
the downstream



Sto. Tomas River

Community Based Disaster Prevention

Non-Structural Measures

Structural Measures

Comprehensive Disaster
Prevention Approach

Downstream

Issues / Needs after the Eruption

- 1) High Mudflow Hazard Potential with continuous riverbed aggradation
- 2) Low Agriculture Productivity
- 3) Low Development in Tourism Sector

Downstream

Measures to be Taken

- 1) Structural Measures for Sabo and Flood Control / Mudflow Monitoring and Evacuation System
- 2) Recovery on Irrigation Facilities & Agriculture Land
- 3) Improvement of Reliability on National Highway No.7

For Upgrading Security
And
Economic Development

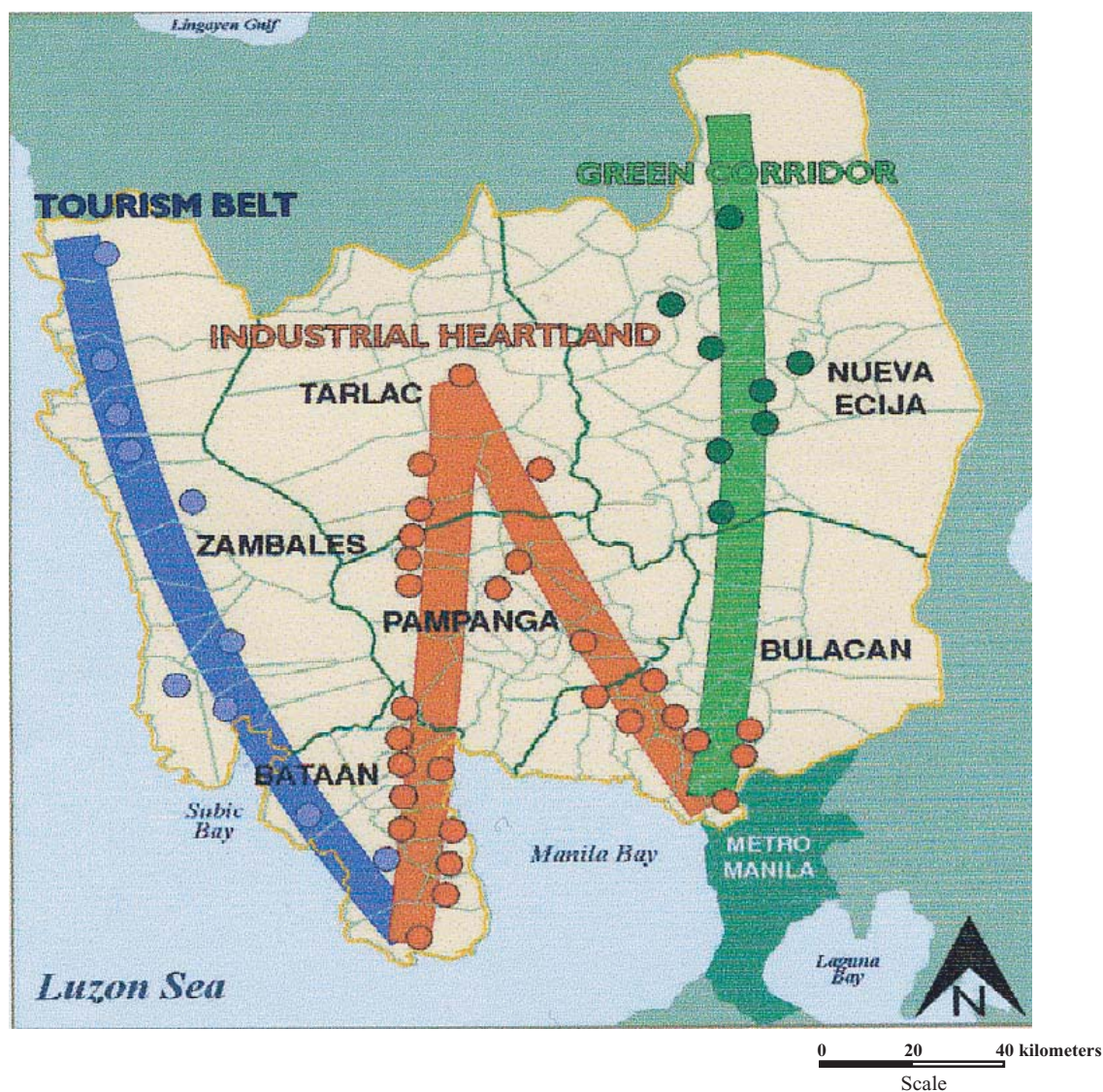
THE GOVERNMENT OF THE PHILIPPINES
THE DEPARTMENT OF PUBLIC WORKS AND HIGHWAYS

**The Study on Sabo and Flood Control for
Western River Basins of Mount Pinatubo in the
Republic of the Philippines**

JAPAN INTERNATIONAL COOPERATION AGENCY

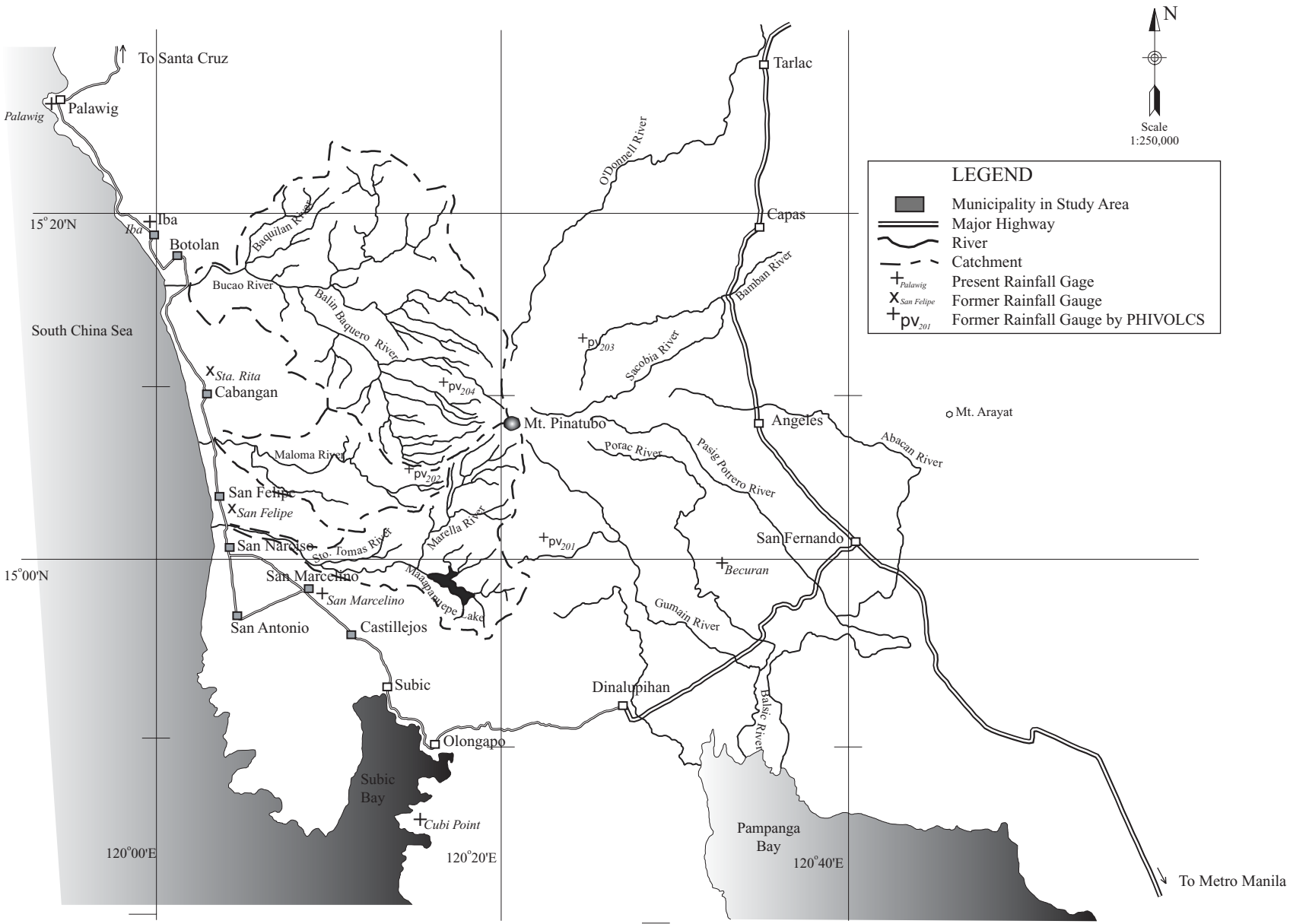
Figure 4.3.1

Basic Concept of the Master Plan



Source: NEDA Region III

<p>THE GOVERNMENT OF THE PHILIPPINES THE DEPARTMENT OF PUBLIC WORKS AND HIGHWAYS</p>	<p>Figure 4.3.2</p> <p>"W" Shaped Spatial Development Strategy of Central Luzon</p>
<p>The Study on Sabo and Flood Control for Western River Basins of Mount Pinatubo in the Republic of the Philippines</p>	
<p>JAPAN INTERNATIONAL COOPERATION AGENCY</p>	



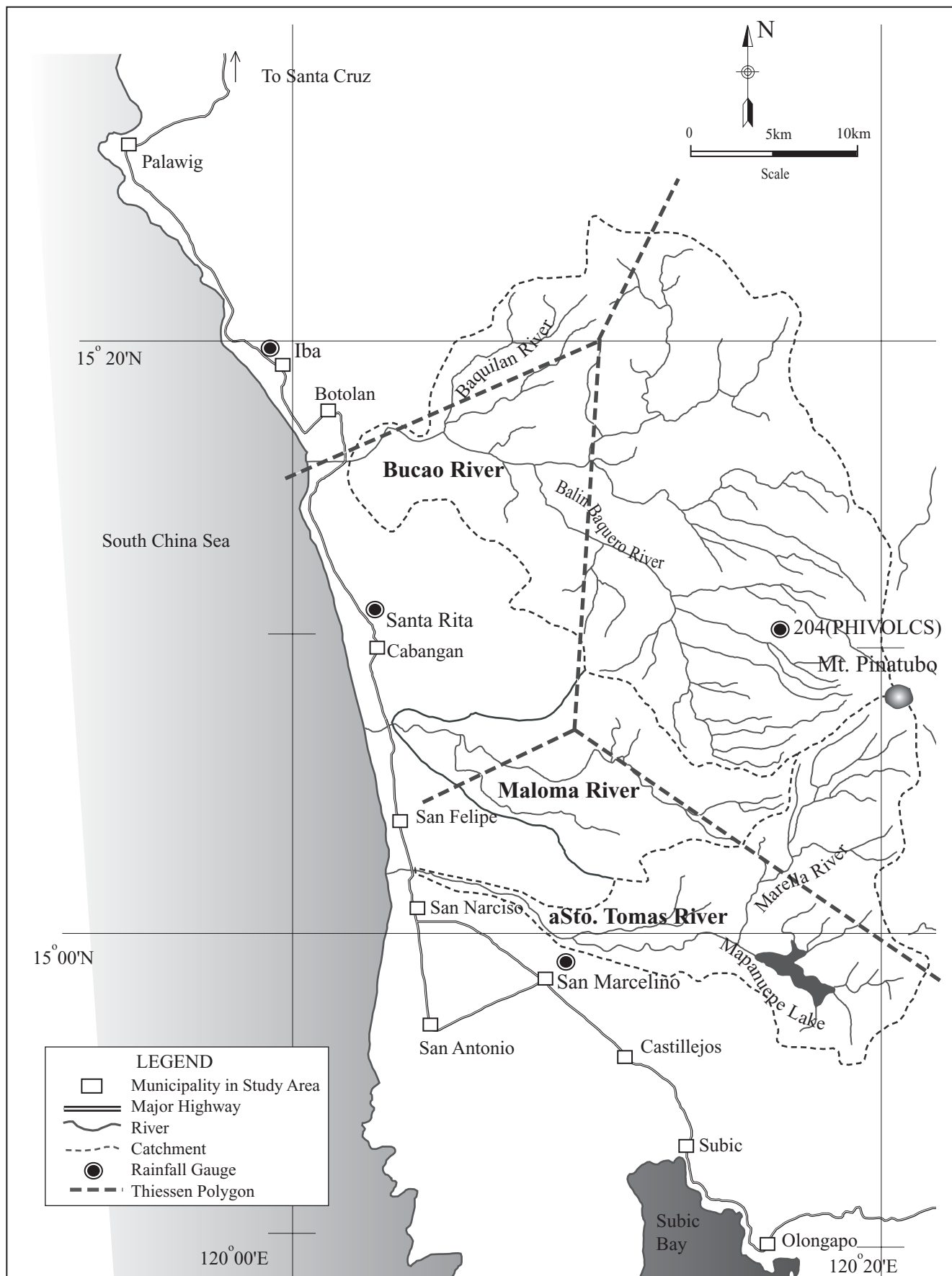
THE GOVERNMENT OF THE PHILIPPINES
THE DEPARTMENT OF PUBLIC WORKS AND HIGHWAYS

**The Study on Sabo and Flood Control for
Western River Basins of Mount Pinatubo
in the Republic of the Philippines**

JAPAN INTERNATIONAL COOPERATION AGENCY

Figure 5.1.1

**Location of Present and Former
Rainfall Gauges**



THE GOVERNMENT OF THE PHILIPPINES
THE DEPARTMENT OF PUBLIC WORKS AND HIGHWAYS

**The Study on Sabo and Flood Control for
Western River Basins of Mount Pinatubo
in the Republic of the Philippines**

JAPAN INTERNATIONAL COOPERATION AGENCY

Figure 5.1.2

Thiessen Polygon for Study Area