

Source: JICA Study Team

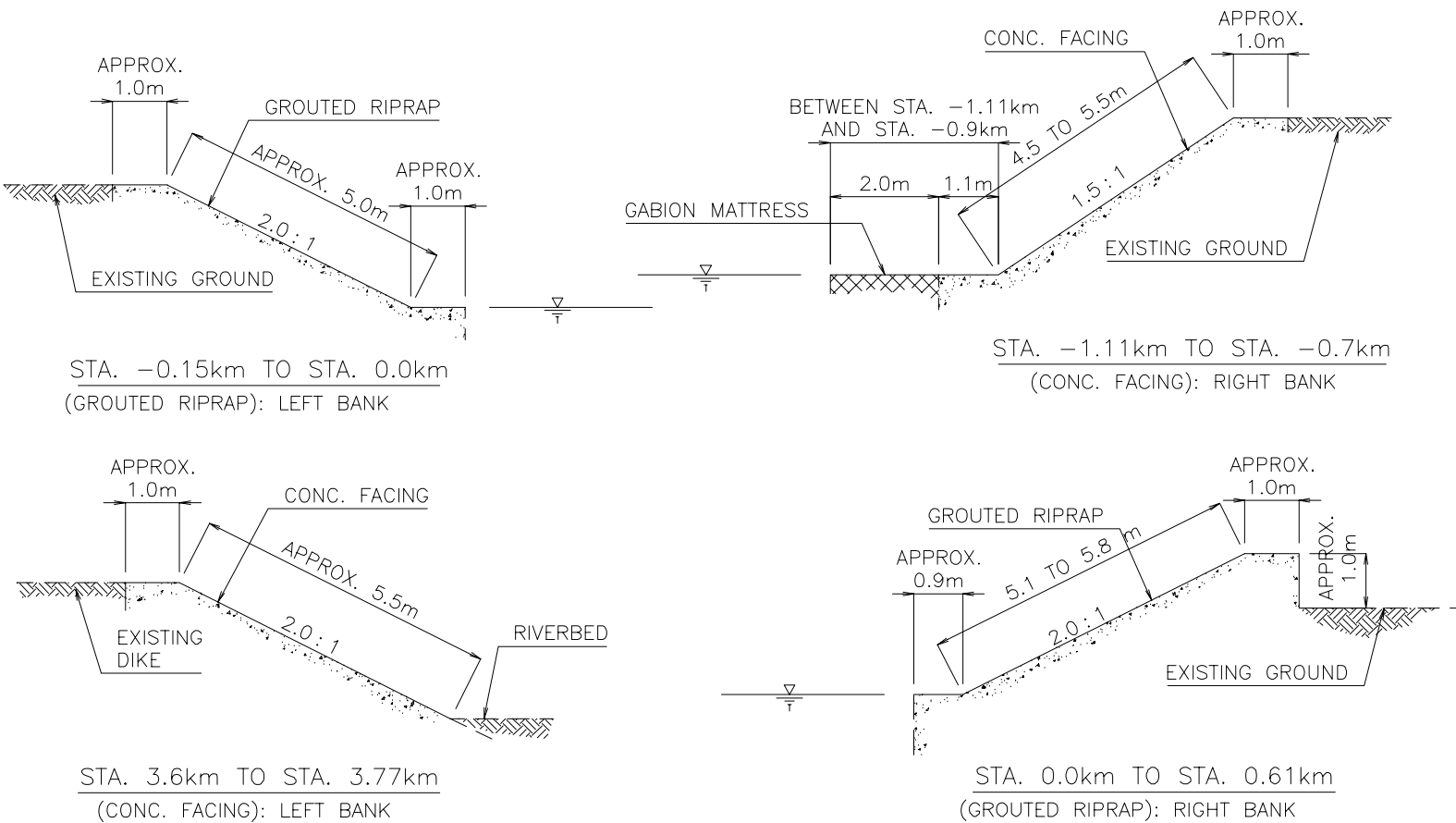
THE GOVERNMENT OF THE PHILIPPINES
THE DEPARTMENT OF PUBLIC WORKS AND HIGHWAYS

**The Study on Sabo and Flood Control for
Western River Basins of Mount Pinatubo
in the Republic of the Philippines**

JAPAN INTERNATIONAL COOPERATION AGENCY

Figure 3.7.6

**Existing Revetment Arrangement along
the Maloma River**



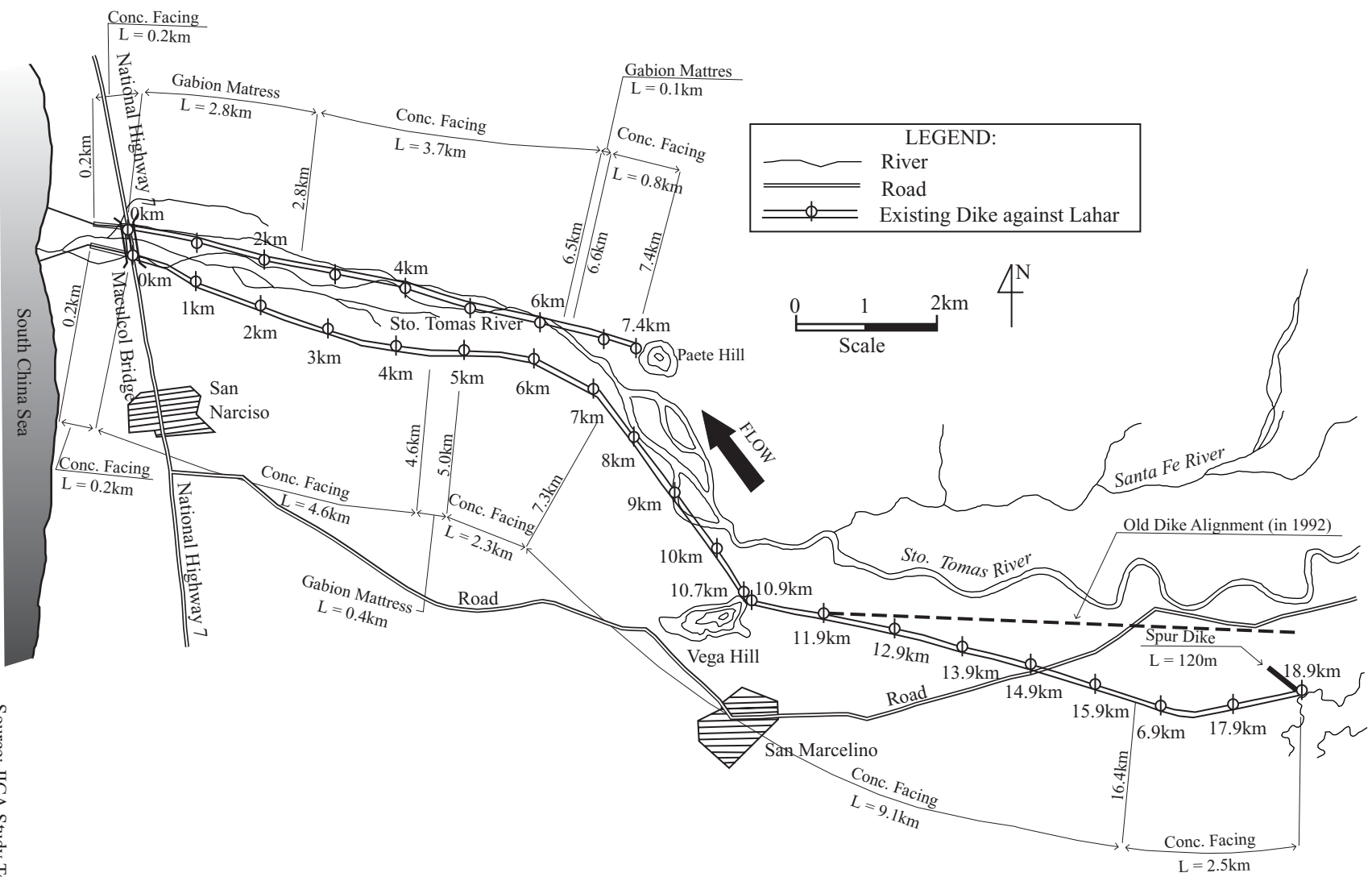
SOURCE : DPWH DISTRICT ENGINEERING OFFICE IN IBA

THE GOVERNMENT OF THE PHILIPPINES
THE DEPARTMENT OF PUBLIC WORKS AND HIGHWAYS

**The Study on Sabo and Flood Control for
Western River Basins of Mount Pinatubo
in the Republic of the Philippines**

JAPAN INTERNATIONAL COOPERATION AGENCY

Figure 3.7.7
**Typical Cross Section of the Existing River Bank
Protection along the Maloma River**



Source: JICA Study Team

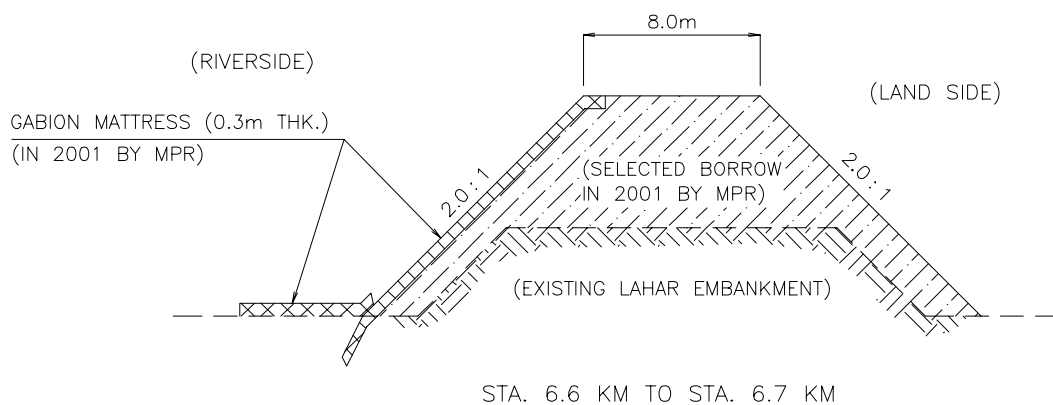
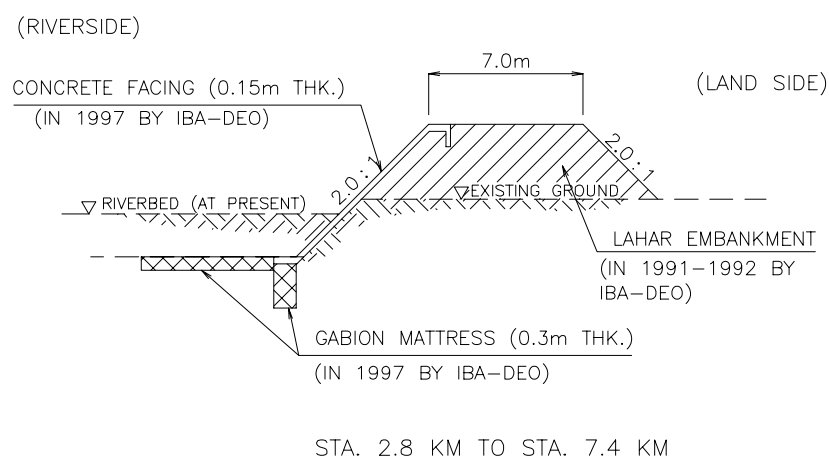
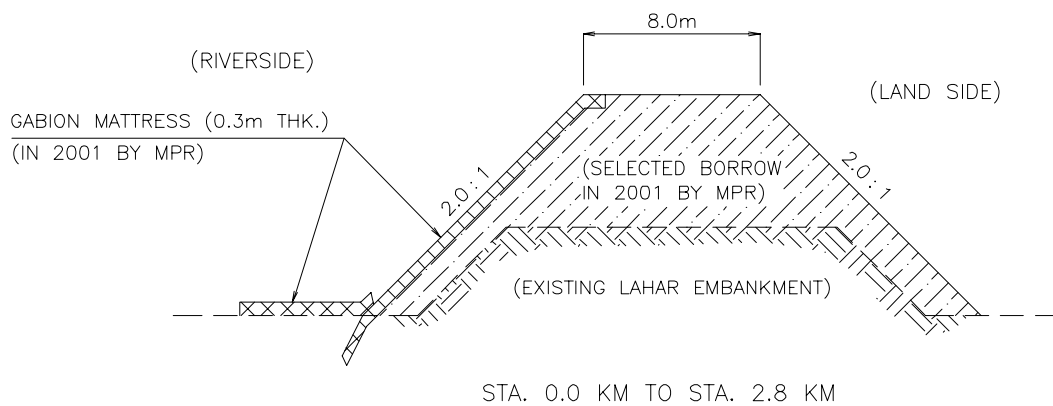
THE GOVERNMENT OF THE PHILIPPINES
THE DEPARTMENT OF PUBLIC WORKS AND HIGHWAYS

**The Study on Sabo and Flood Control for
Western River Basins of Mount Pinatubo
in the Republic of the Philippines**

JAPAN INTERNATIONAL COOPERATION AGENCY

Figure 3.7.8

**Existing Dike Arrangement along the Sto.
Tomas River**



SOURCE : MT. PINATUBO REHABILITATION OFFICE (MPR)
DPWH DISTRICT ENGINEERING OFFICE IN IBA
(IBA-DEO)

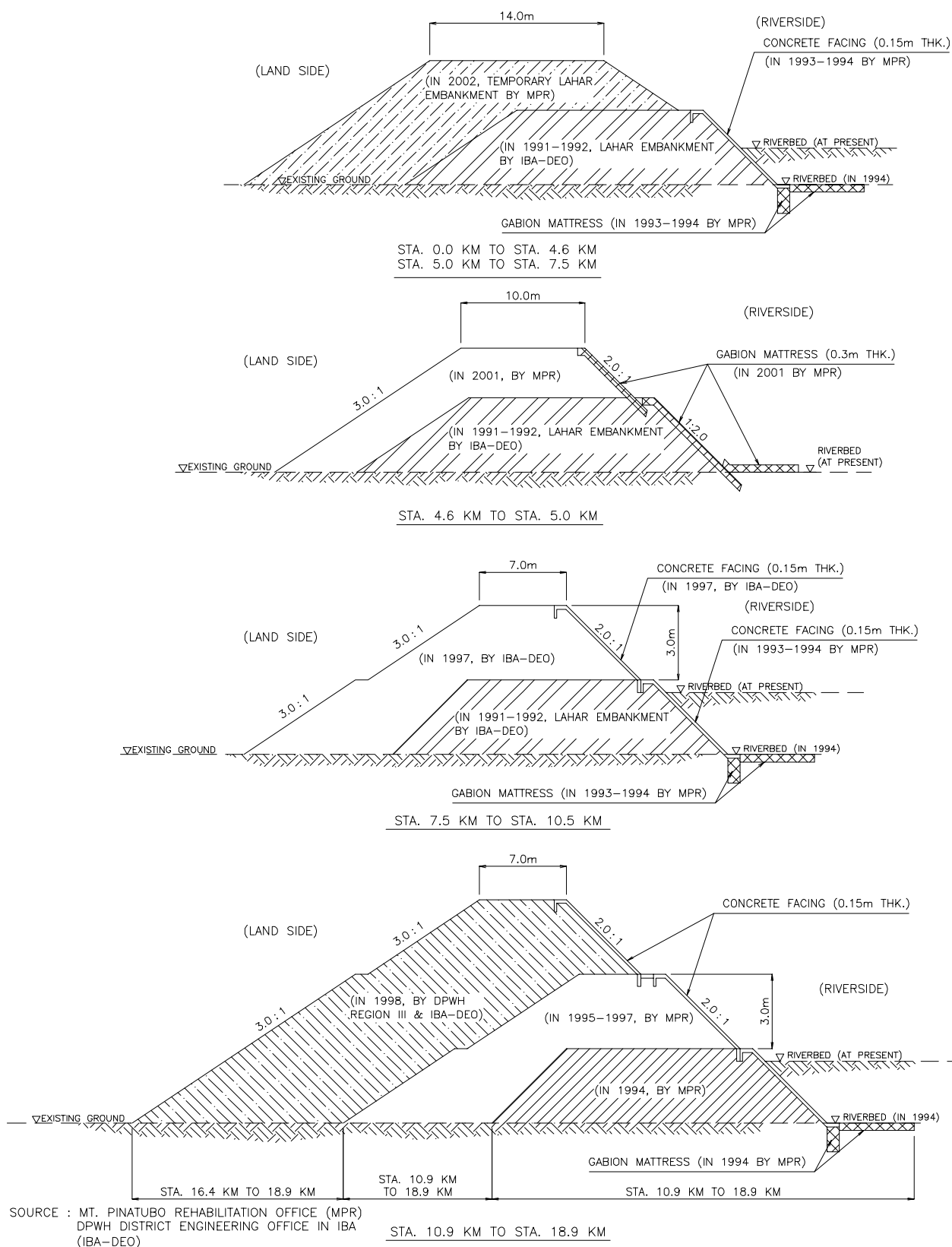
THE GOVERNMENT OF THE PHILIPPINES
THE DEPARTMENT OF PUBLIC WORKS AND HIGHWAYS

**The Study on Sabo and Flood Control for
Western River Basins of Mount Pinatubo
in the Republic of the Philippines**

JAPAN INTERNATIONAL COOPERATION AGENCY

Figure 3.7.9

**Typical Cross Section of the Existing Dike
along the Sto. Tomas River (Right Bank)**



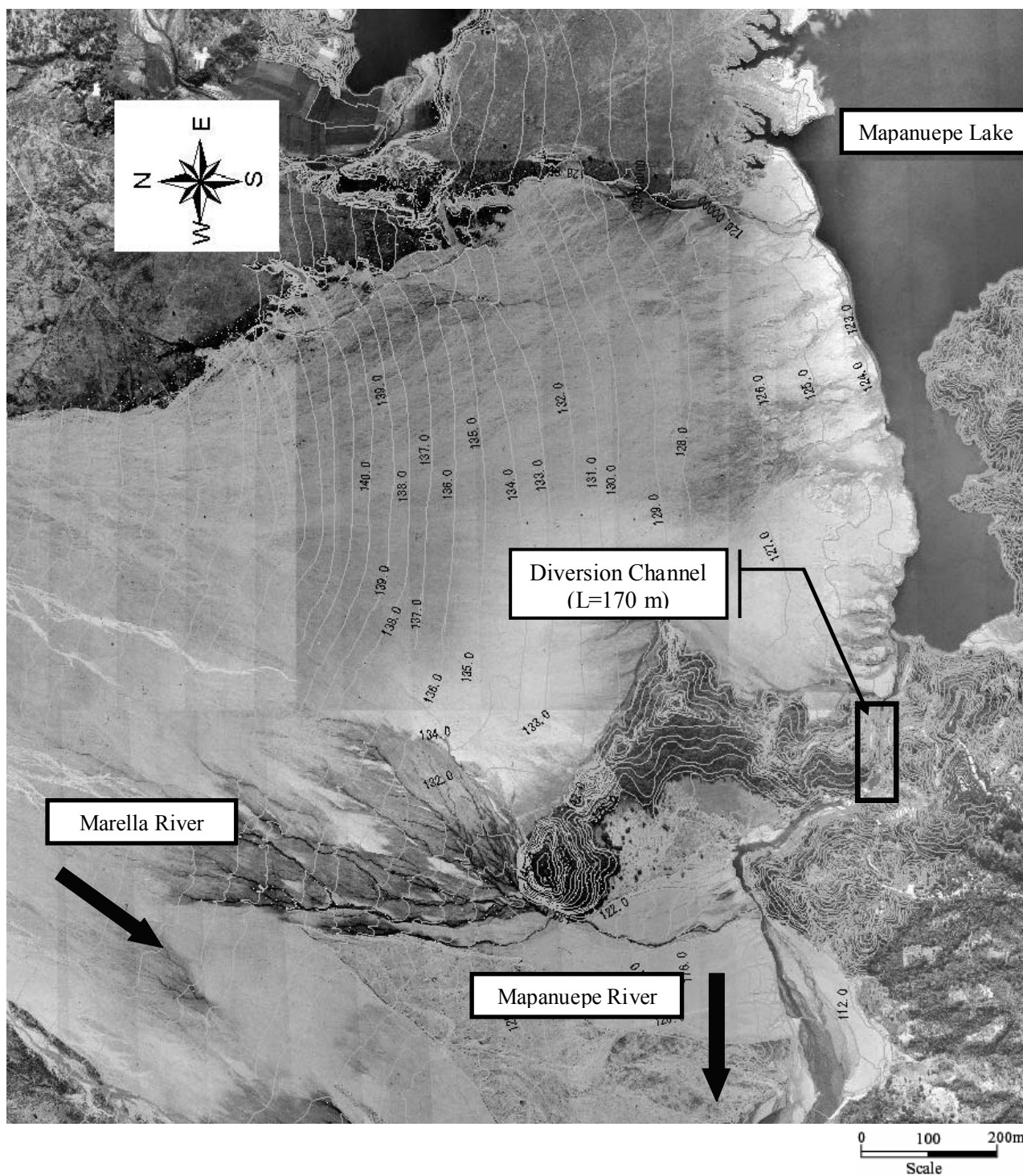
THE GOVERNMENT OF THE PHILIPPINES
THE DEPARTMENT OF PUBLIC WORKS AND HIGHWAYS

**The Study on Sabo and Flood Control for
Western River Basins of Mount Pinatubo
in the Republic of the Philippines**

JAPAN INTERNATIONAL COOPERATION AGENCY

Figure 3.7.10

**Typical Cross Section of the Existing Dike
along the Sto. Tomas River (Left Bank)**



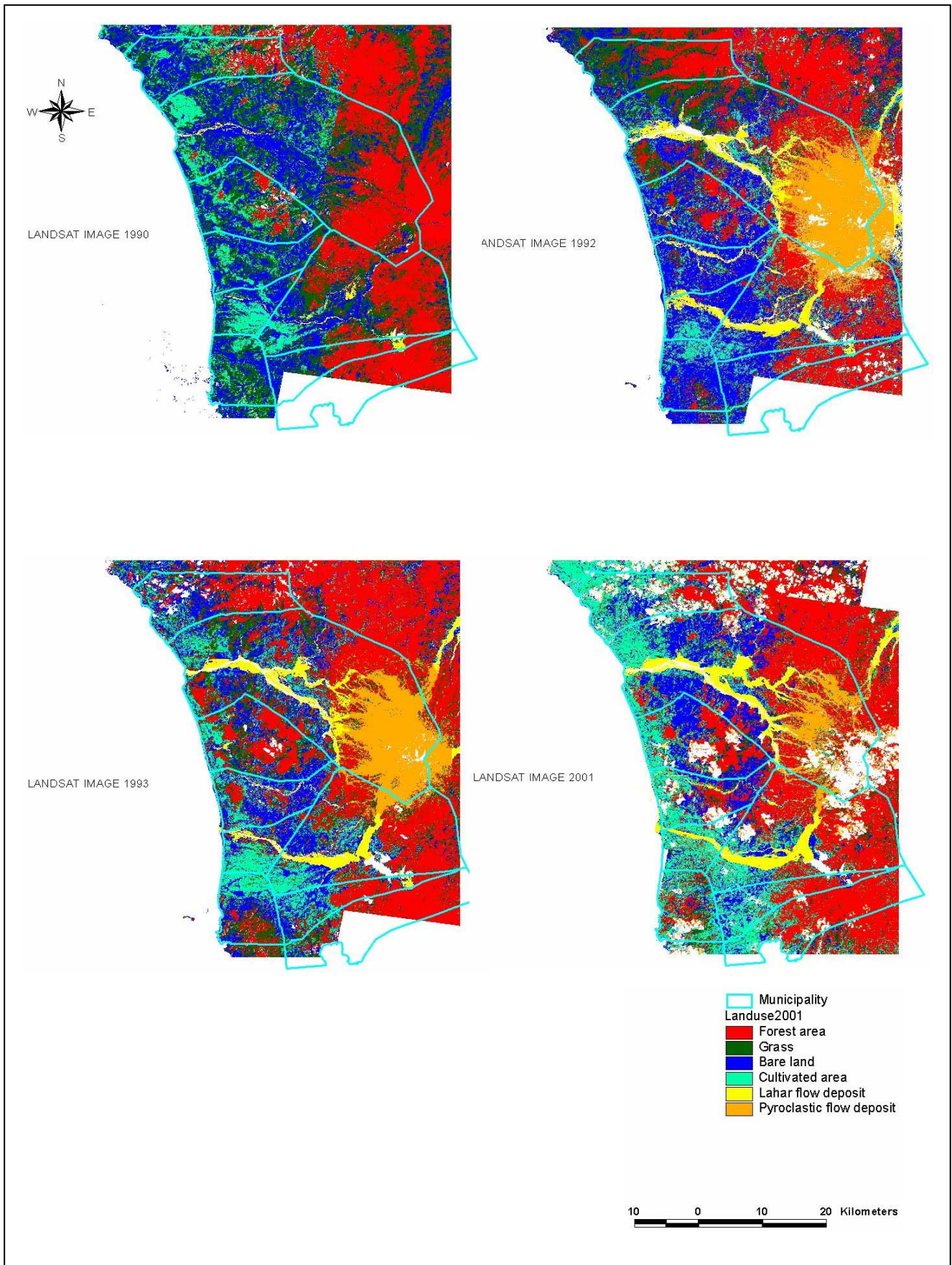
THE GOVERNMENT OF THE PHILIPPINES
THE DEPARTMENT OF PUBLIC WORKS AND HIGHWAYS

**The Study on Sabo and Flood Control for
Western River Basins of Mount Pinatubo in
the Republic of the Philippines**

JAPAN INTERNATIONAL COOPERATION AGENCY

Figure 3.7.11

**Location of Diversion Channel at Mapanuepe
Lake**



THE GOVERNMENT OF THE PHILIPPINES
THE DEPARTMENT OF PUBLIC WORKS AND HIGHWAYS

**The Study on Sabo and Flood Control for
Western River Basins of Mount Pinatubo in
the Republic of the Philippines**

JAPAN INTERNATIONAL COOPERATION AGENCY

Figure 3.8.1

**Change Land Use Condition after the Eruption
of Mount Pinatubo**

FIGURE 5.1

EXISTING LAND USE MAP FOR THE PROVINCE OF ZAMBALES



Source: BSWM/LAEP, PPDO, DENR, DA, 1996

THE GOVERNMENT OF THE PHILIPPINES
THE DEPARTMENT OF PUBLIC WORKS AND HIGHWAYS

**The Study on Sabo and Flood Control for
Western River Basins of Mount Pinatubo
in the Republic of the Philippines**

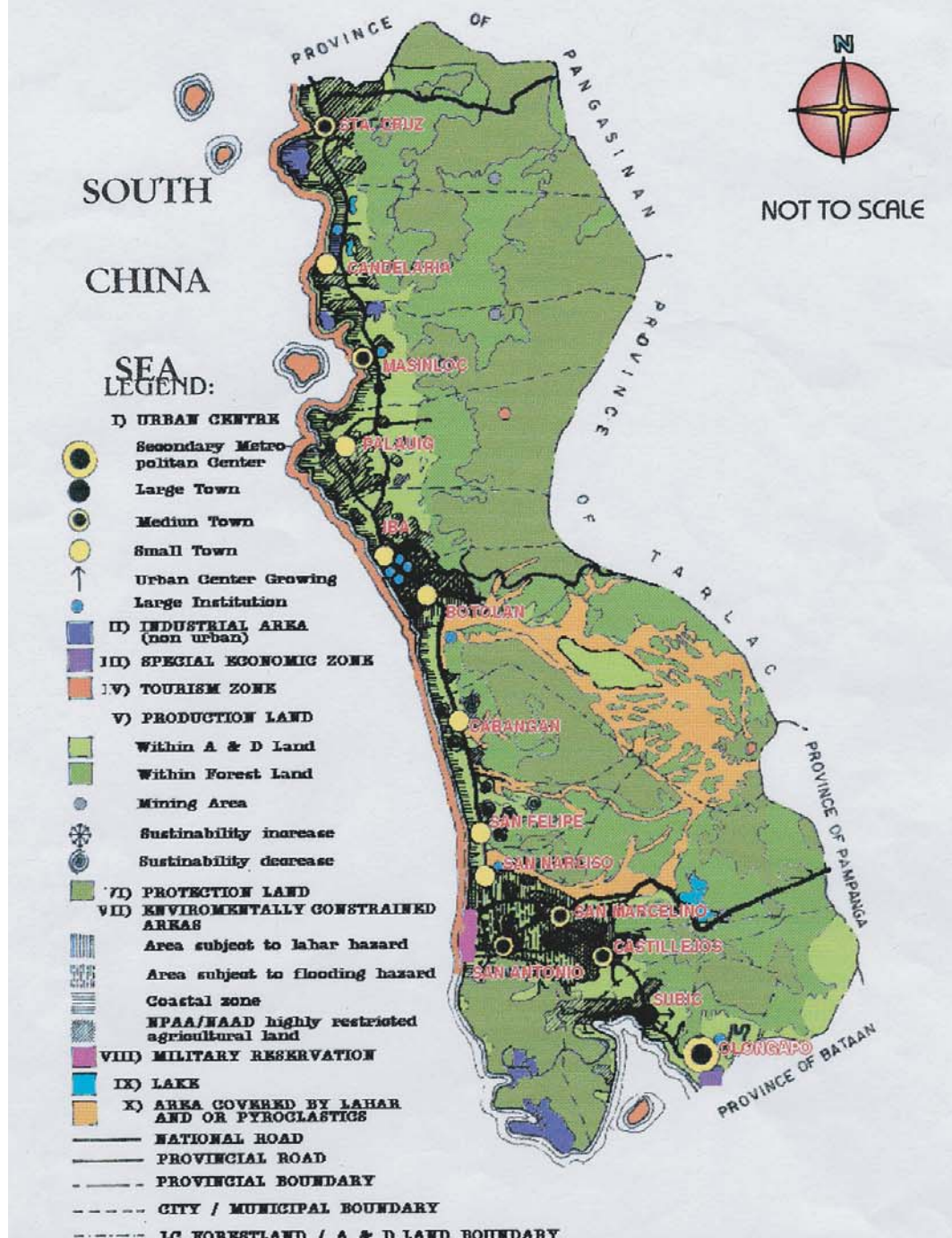
JAPAN INTERNATIONAL COOPERATION AGENCY

Figure 3.8.2

**Existing Land Use for the Province of
Zambales**

FIGURE 15.2

PROVINCE OF ZAMBALES LAND USE, YEAR 2002



Source: BSWM 1987, PPDO 1996, PHILVOCS 1995

THE GOVERNMENT OF THE PHILIPPINES
THE DEPARTMENT OF PUBLIC WORKS AND HIGHWAYS

**The Study on Sabo and Flood Control for
Western River Basins of Mount Pinatubo
in the Republic of the Philippines**

JAPAN INTERNATIONAL COOPERATION AGENCY

Figure 3.8.3

Future Land Use Plan (Target Year is 2002)