

Source: JICA Study Team

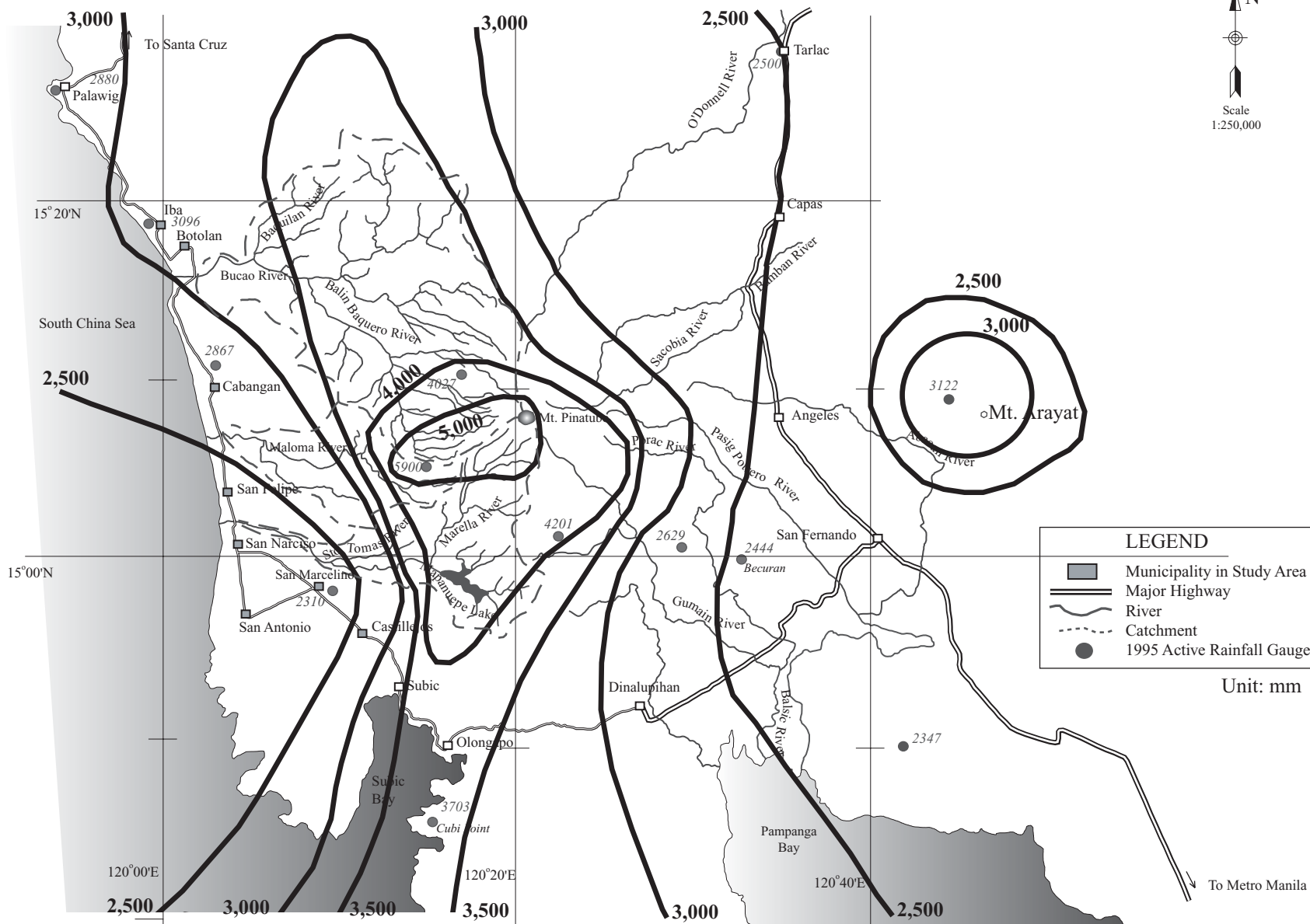
THE GOVERNMENT OF THE PHILIPPINES
THE DEPARTMENT OF PUBLIC WORKS AND HIGHWAYS

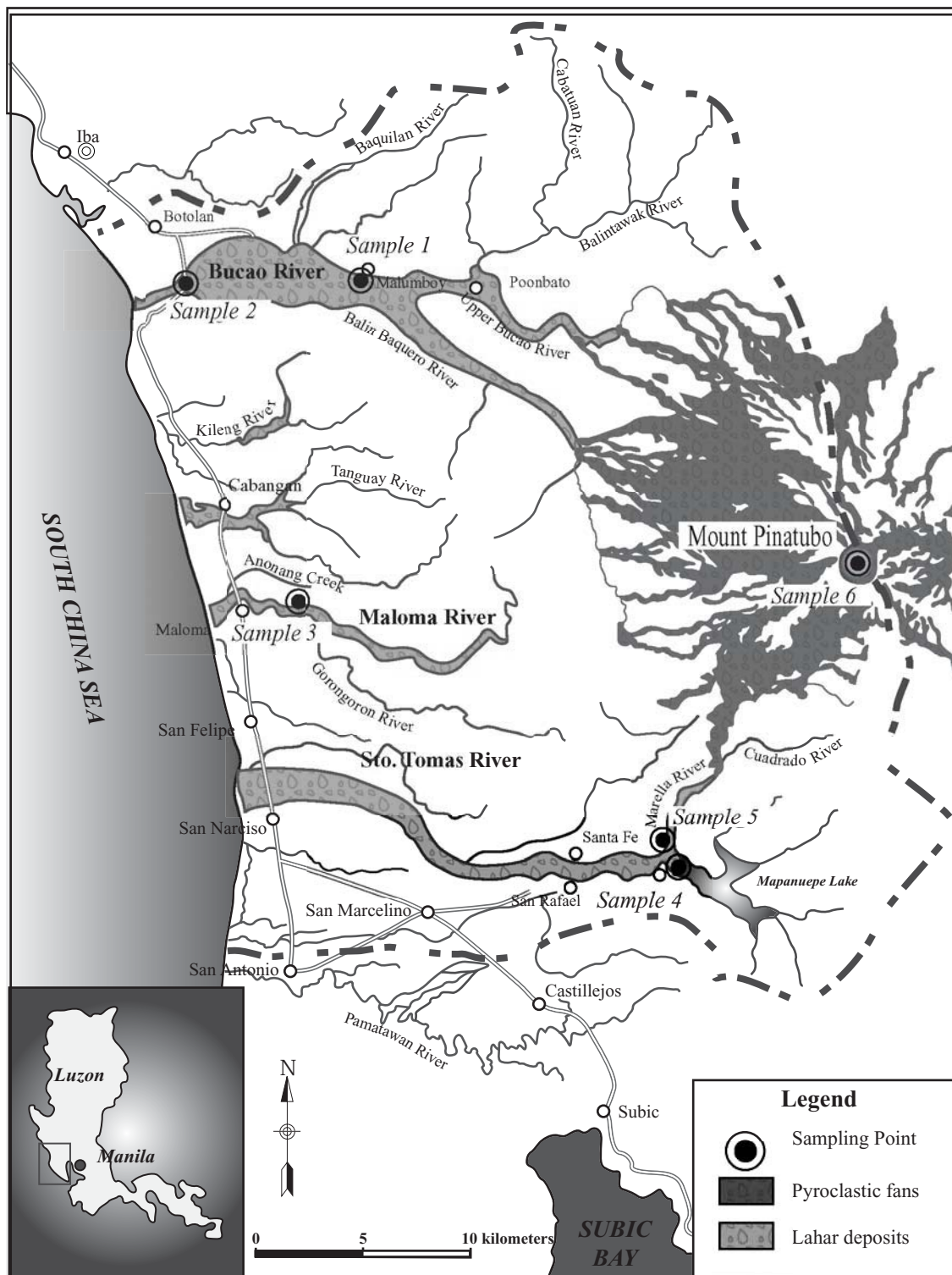
**The Study on Sabo and Flood Control for
Western River Basins of Mount Pinatubo in
the Republic of the Philippines**

JAPAN INTERNATIONAL COOPERATION AGENCY

Figure 3.4.1

Monthly Meteorological Values in the Regions





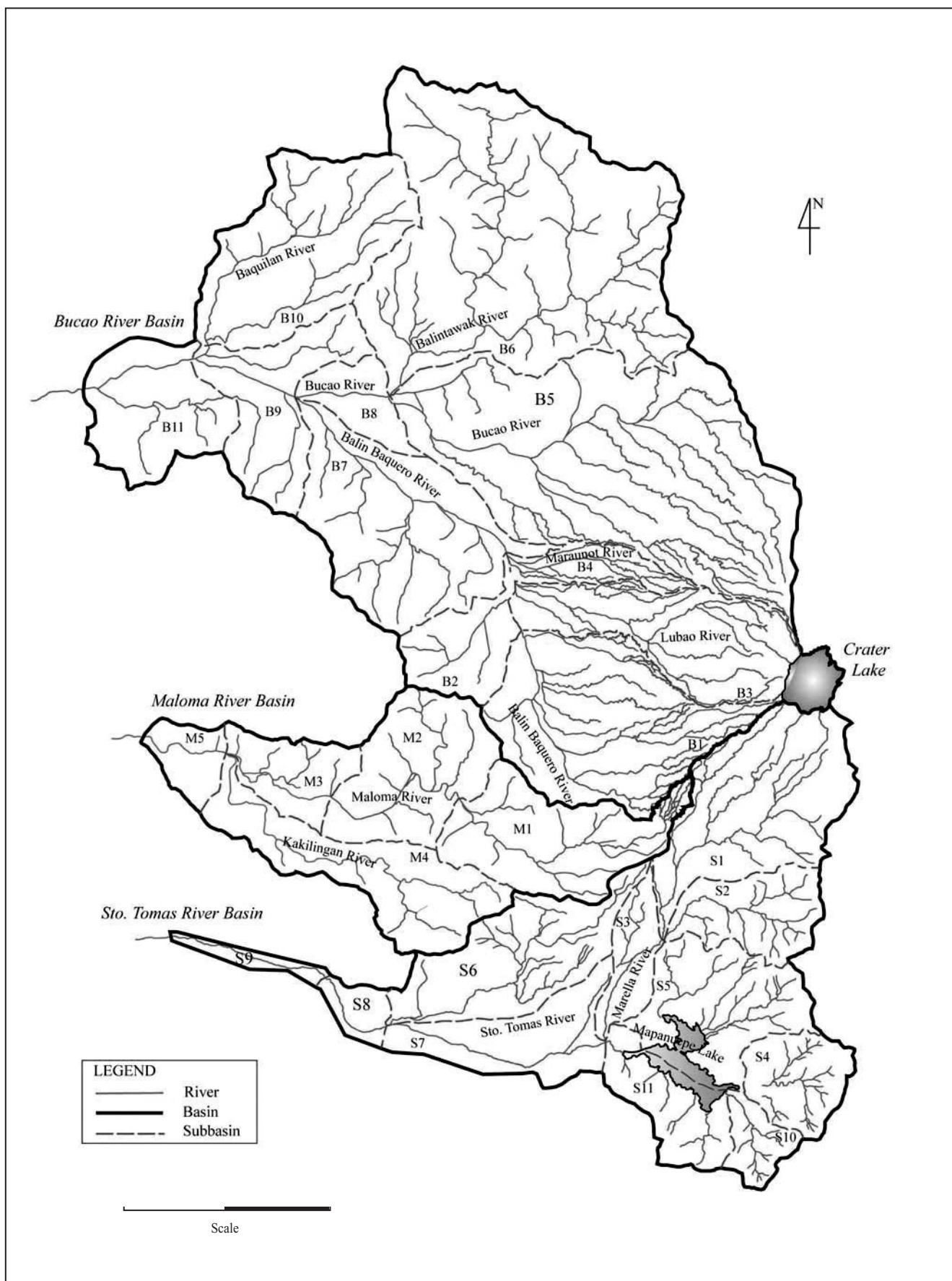
THE GOVERNMENT OF THE PHILIPPINES
THE DEPARTMENT OF PUBLIC WORKS AND HIGHWAYS

**The Study on Sabo and Flood Control for
Western River Basins of Mount Pinatubo
in the Republic of the Philippines**

JAPAN INTERNATIONAL COOPERATION AGENCY

Figure 3.4.3

Water Quality Sampling Location



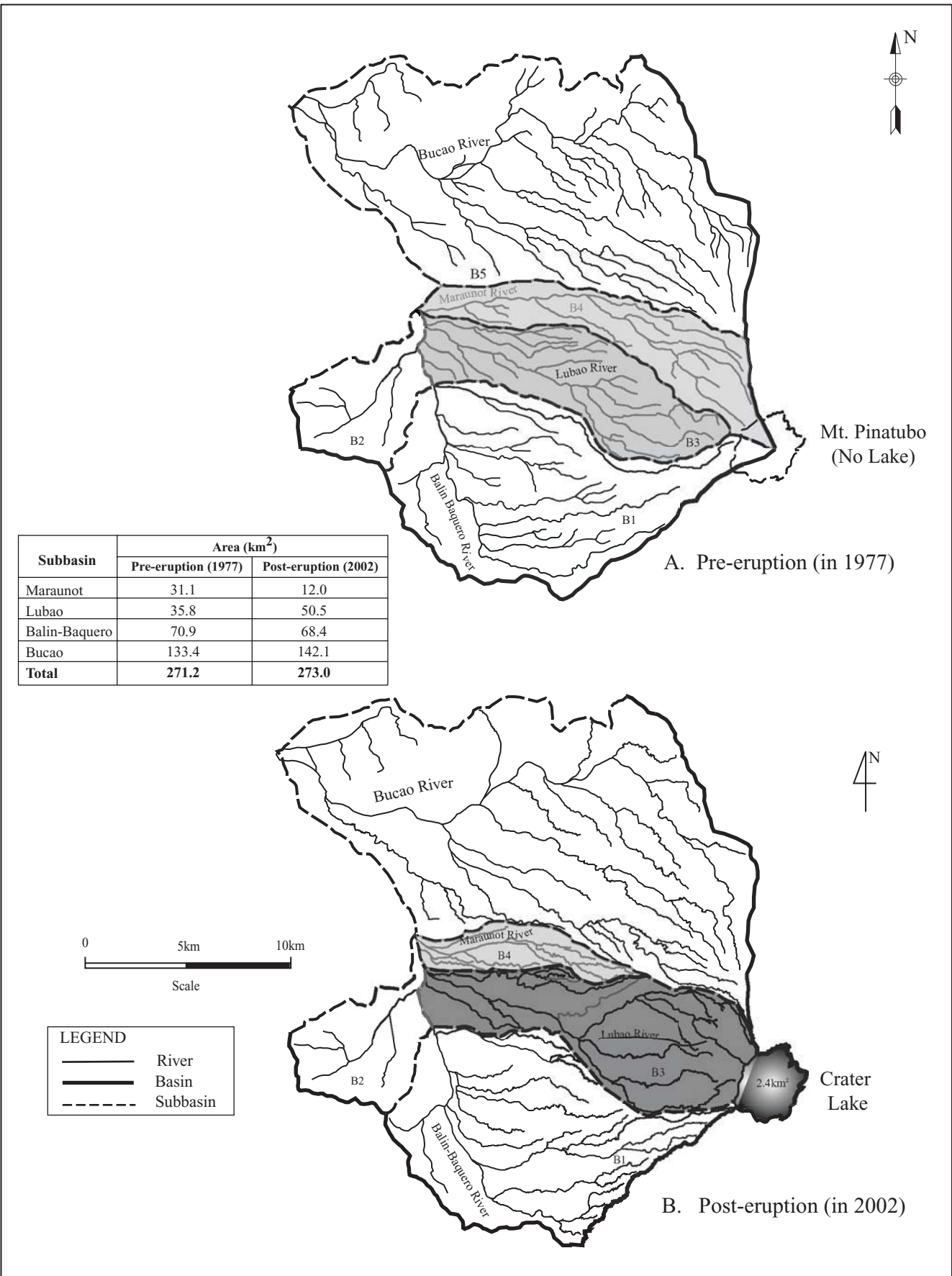
THE GOVERNMENT OF THE PHILIPPINES
THE DEPARTMENT OF PUBLIC WORKS AND HIGHWAYS

**The Study on Sabo and Flood Control for
Western River Basins of Mount Pinatubo
in the Republic of the Philippines**

JAPAN INTERNATIONAL COOPERATION AGENCY

Figure 3.5.1

Basin Boundary Map



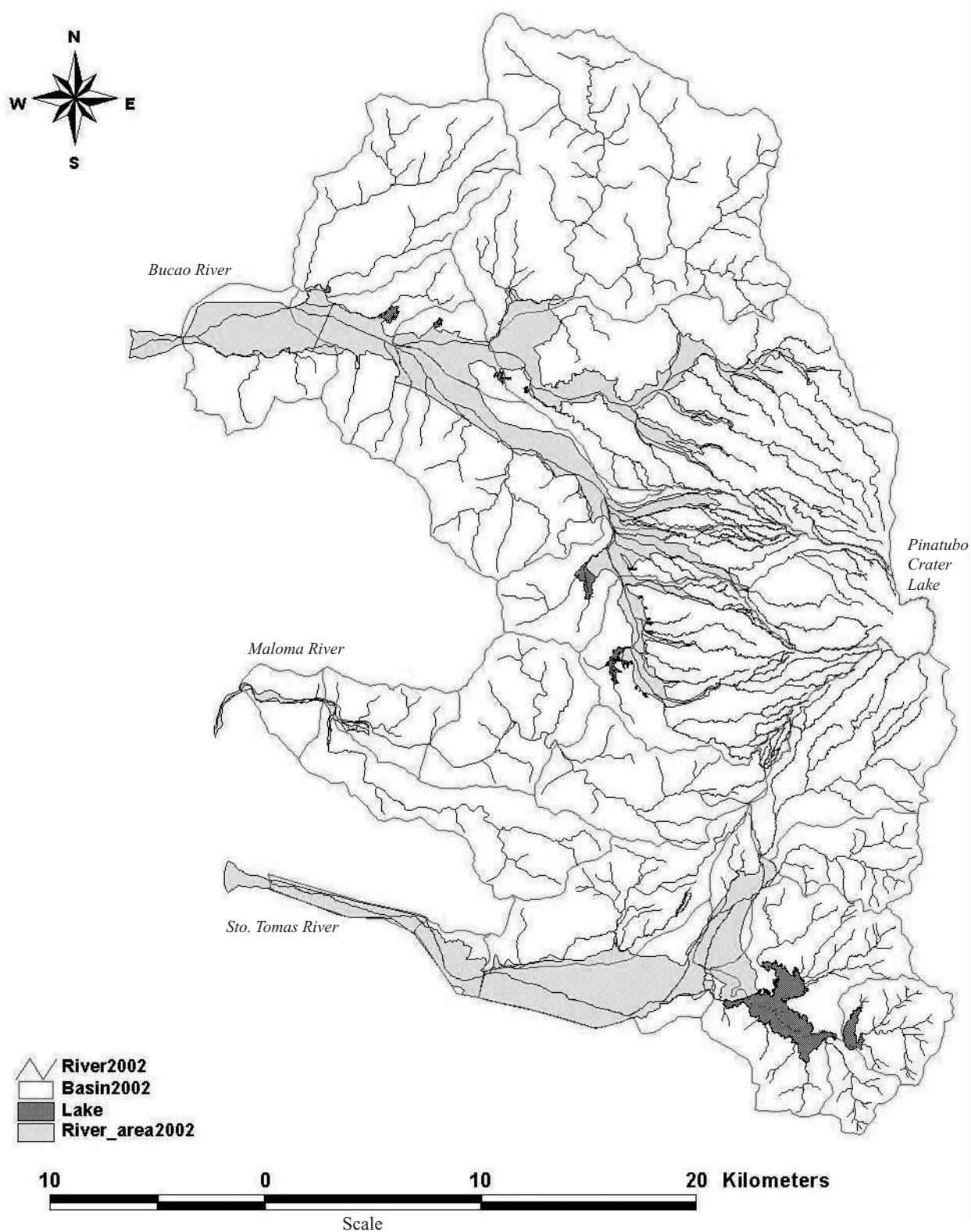
THE GOVERNMENT OF THE PHILIPPINES
THE DEPARTMENT OF PUBLIC WORKS AND HIGHWAYS

**The Study on Sabo and Flood Control for
Western River Basins of Mount Pinatubo
in the Republic of the Philippines**

JAPAN INTERNATIONAL COOPERATION AGENCY

Figure 3.5.2

**Change in Catchment Area in the Bucao
River System**



Source: JICA Study Team

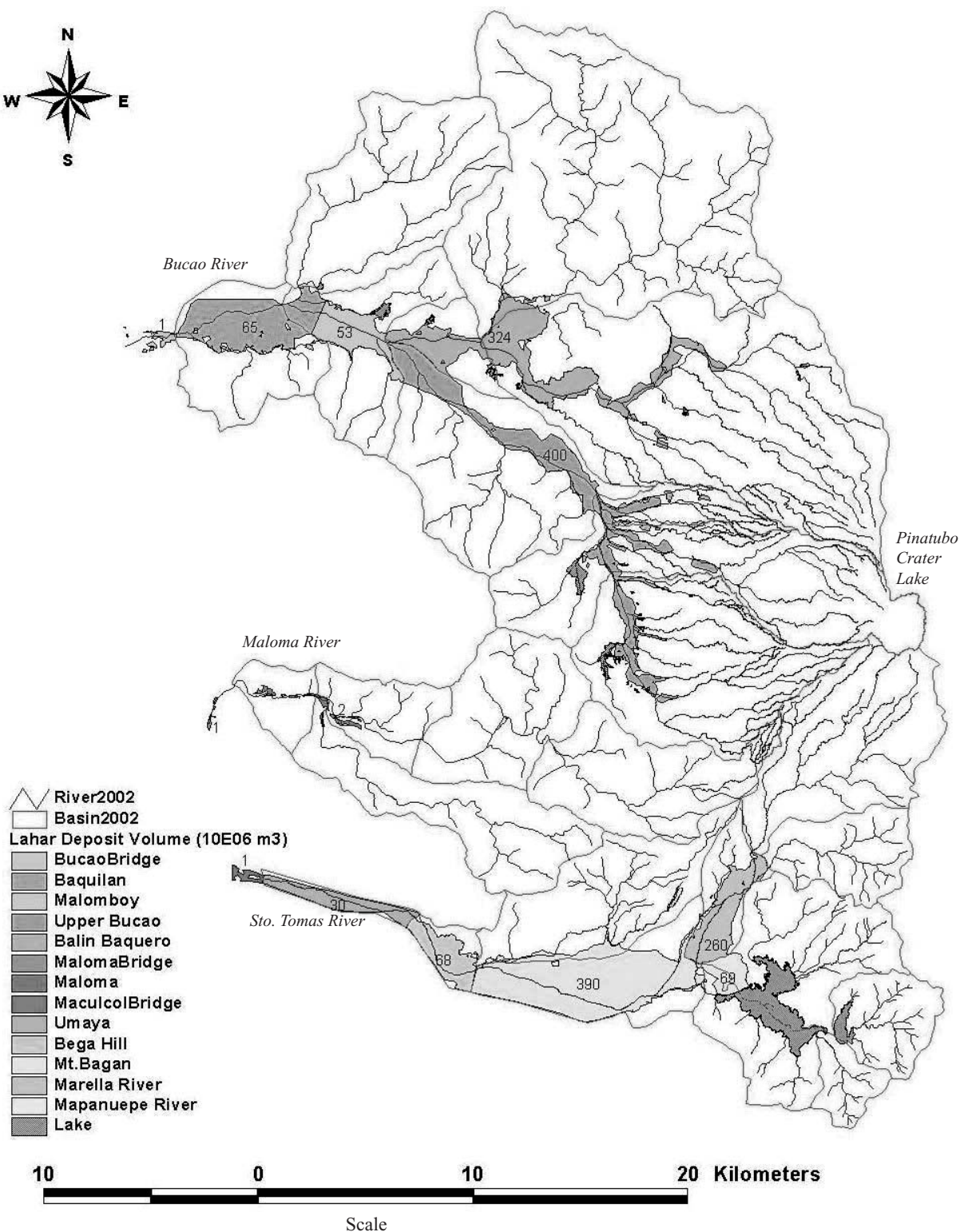
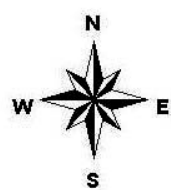
THE GOVERNMENT OF THE PHILIPPINES
THE DEPARTMENT OF PUBLIC WORKS AND HIGHWAYS

**The Study on Sabo and Flood Control for
Western River Basins of Mount Pinatubo
in the Republic of the Philippines**

JAPAN INTERNATIONAL COOPERATION AGENCY

Figure 3.5.3

Location of Dammed-up Lakes



Source: JICA Study Team

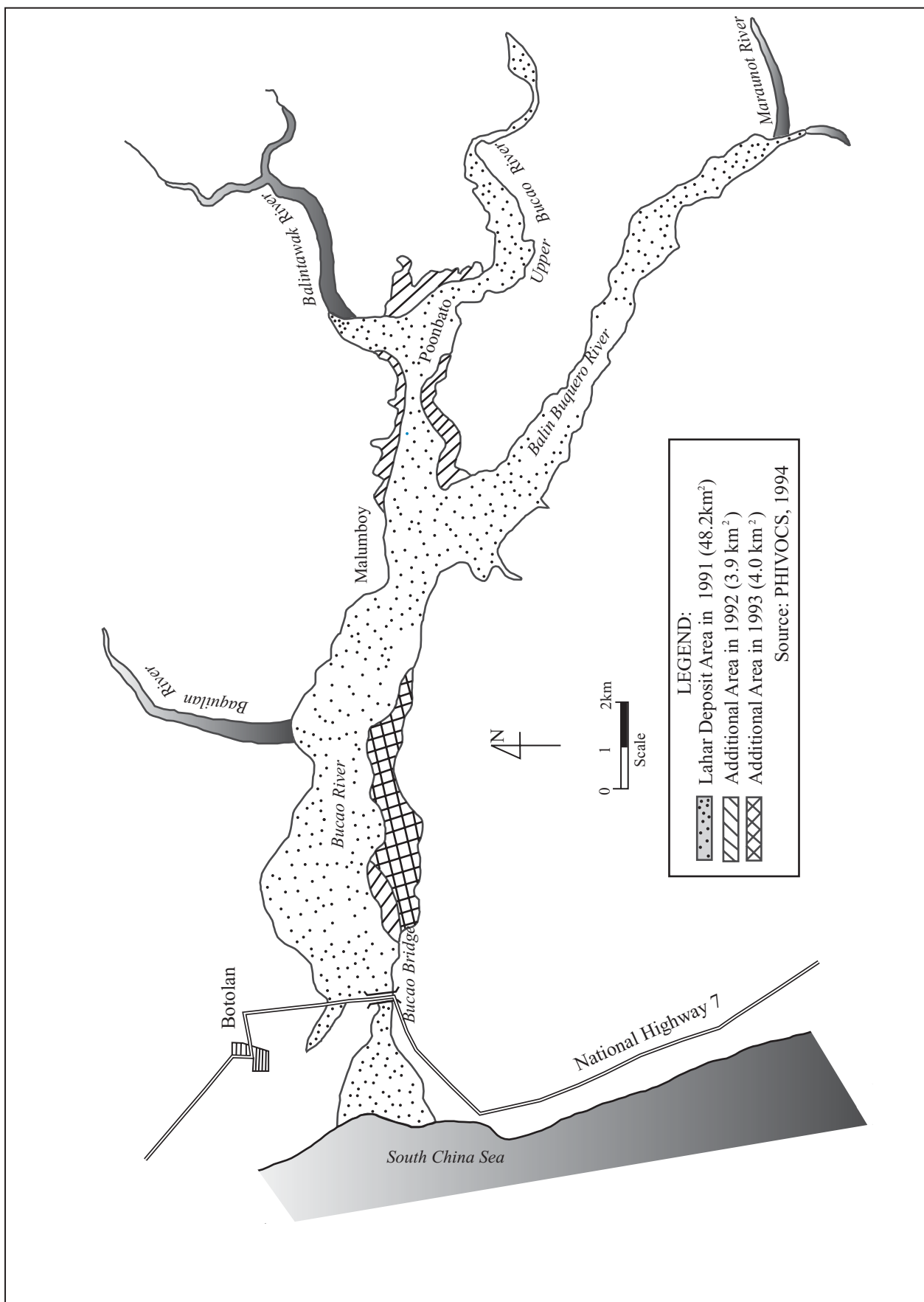
THE GOVERNMENT OF THE PHILIPPINES
THE DEPARTMENT OF PUBLIC WORKS AND HIGHWAYS

**The Study on Sabo and Flood Control for
Western River Basins of Mount Pinatubo
in the Republic of the Philippines**

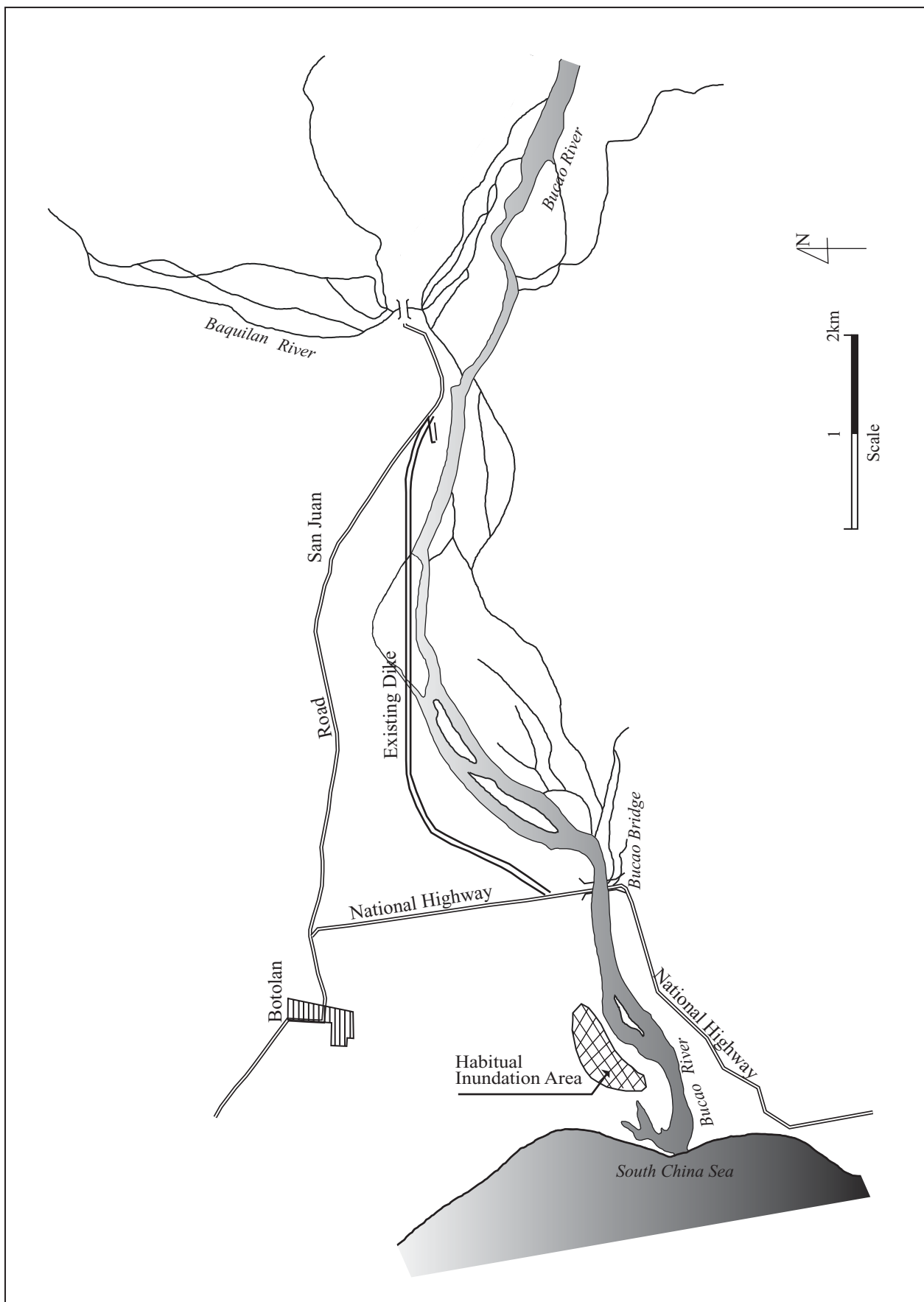
JAPAN INTERNATIONAL COOPERATION AGENCY

Figure 3.5.4

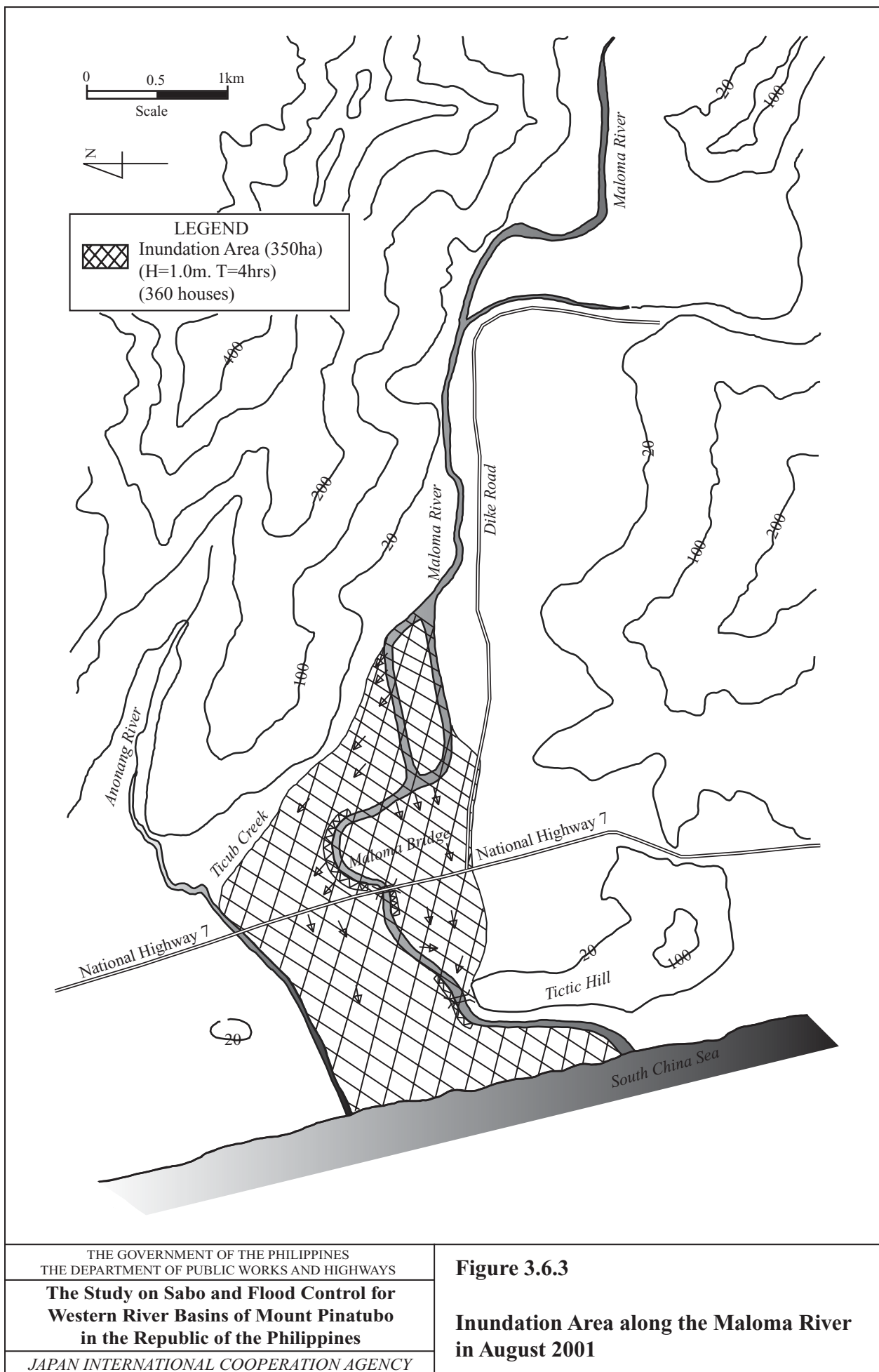
**Volume of Lahar Deposition along River
Channels**

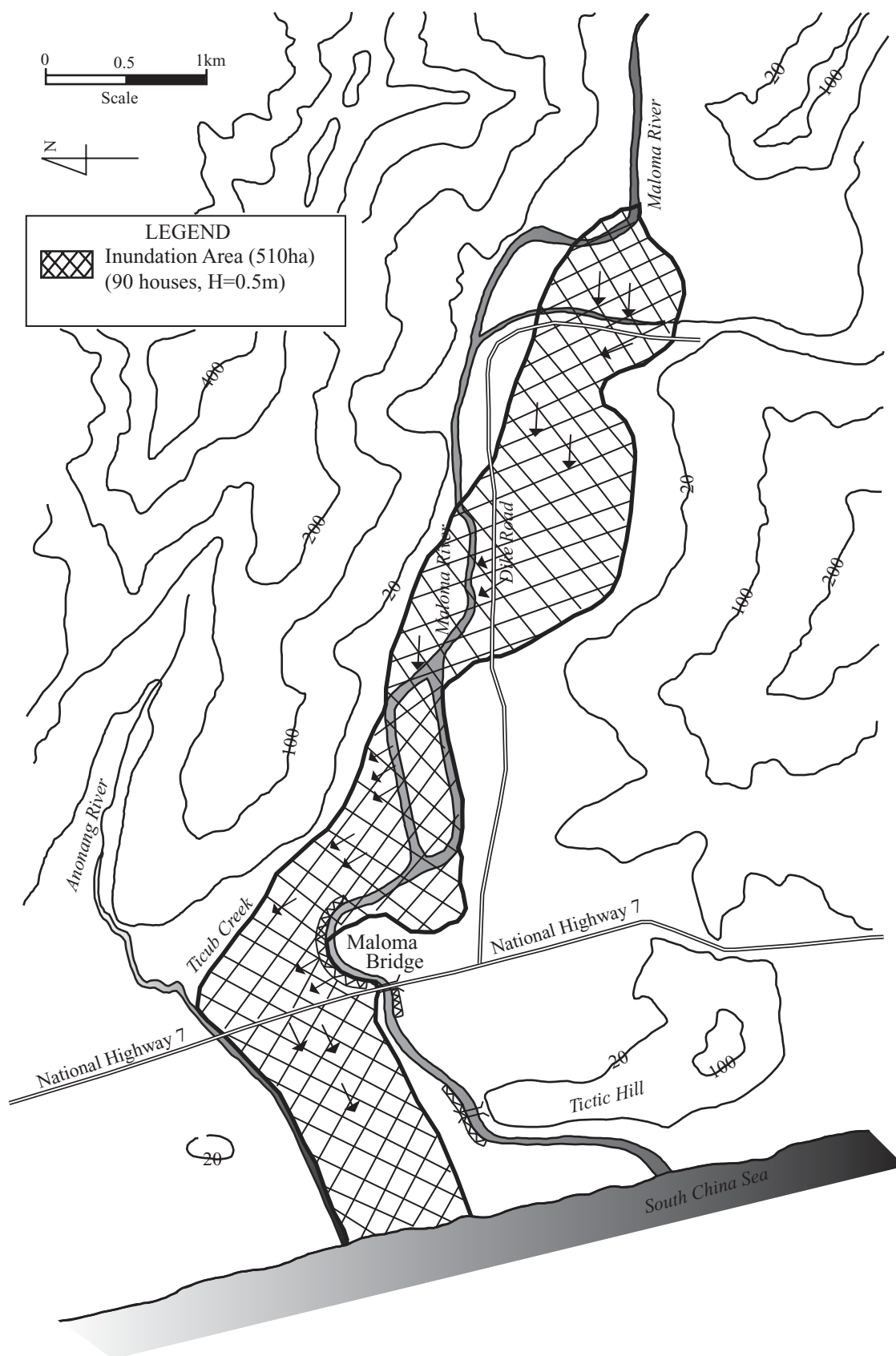


<p>THE GOVERNMENT OF THE PHILIPPINES THE DEPARTMENT OF PUBLIC WORKS AND HIGHWAYS</p>	<p>Figure 3.6.1</p>
<p>The Study on Sabo and Flood Control for Western River Basins of Mount Pinatubo in the Republic of the Philippines</p>	<p>Lahar Deposit Area in the Bucao River System</p>
<p>JAPAN INTERNATIONAL COOPERATION AGENCY</p>	



<p>THE GOVERNMENT OF THE PHILIPPINES THE DEPARTMENT OF PUBLIC WORKS AND HIGHWAYS</p> <p>The Study on Sabo and Flood Control for Western River Basins of Mount Pinatubo in the Republic of the Philippines</p> <p>JAPAN INTERNATIONAL COOPERATION AGENCY</p>	<p>Figure 3.6.2</p> <p>Habitual Inundation Area along Bucao River</p>
--	---





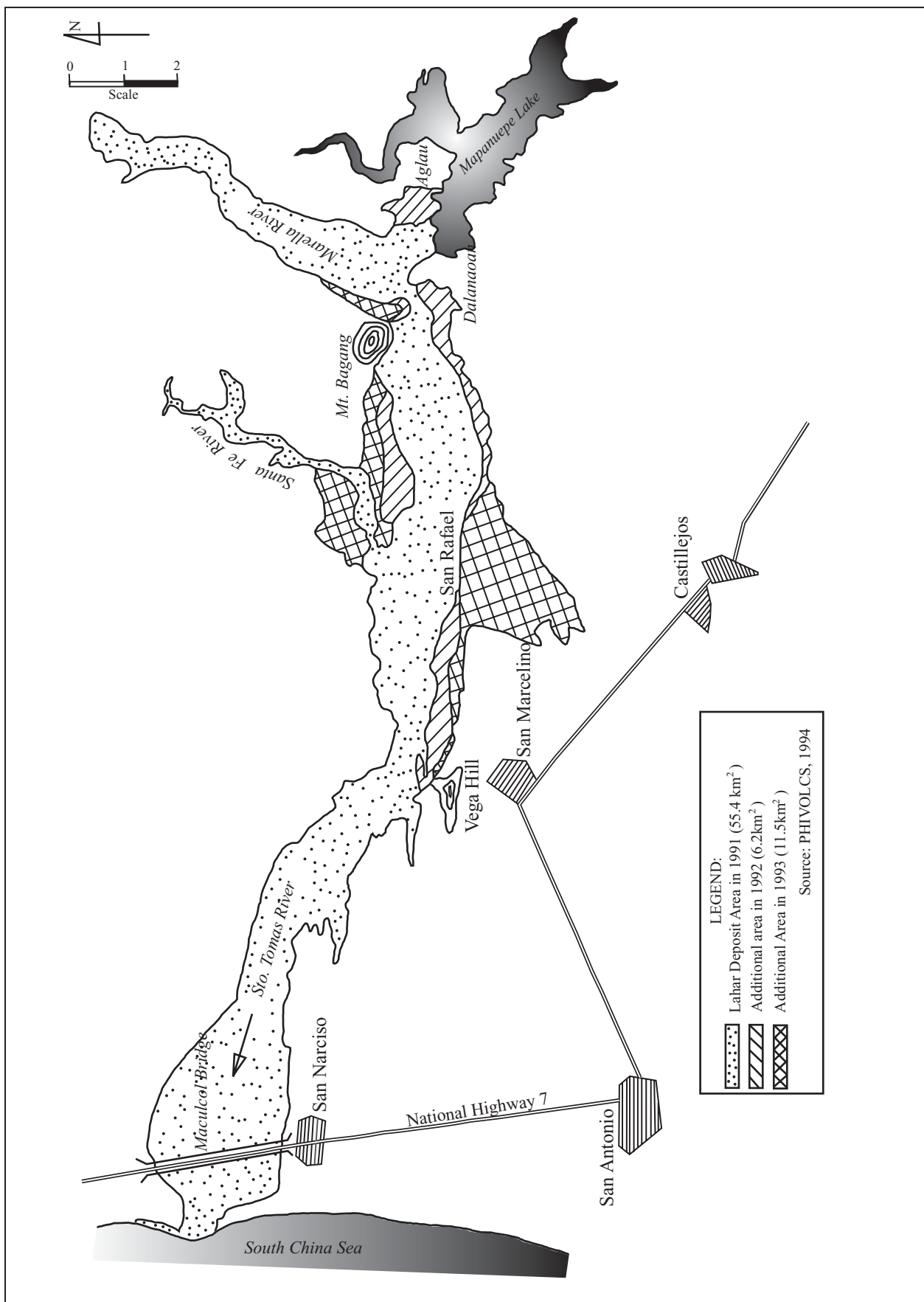
THE GOVERNMENT OF THE PHILIPPINES
THE DEPARTMENT OF PUBLIC WORKS AND HIGHWAYS

**The Study on Sabo and Flood Control for
Western River Basins of Mount Pinatubo
in the Republic of the Philippines**

JAPAN INTERNATIONAL COOPERATION AGENCY

Figure 3.6.4

**Inundation Area along the Maloma River
in July 2002**



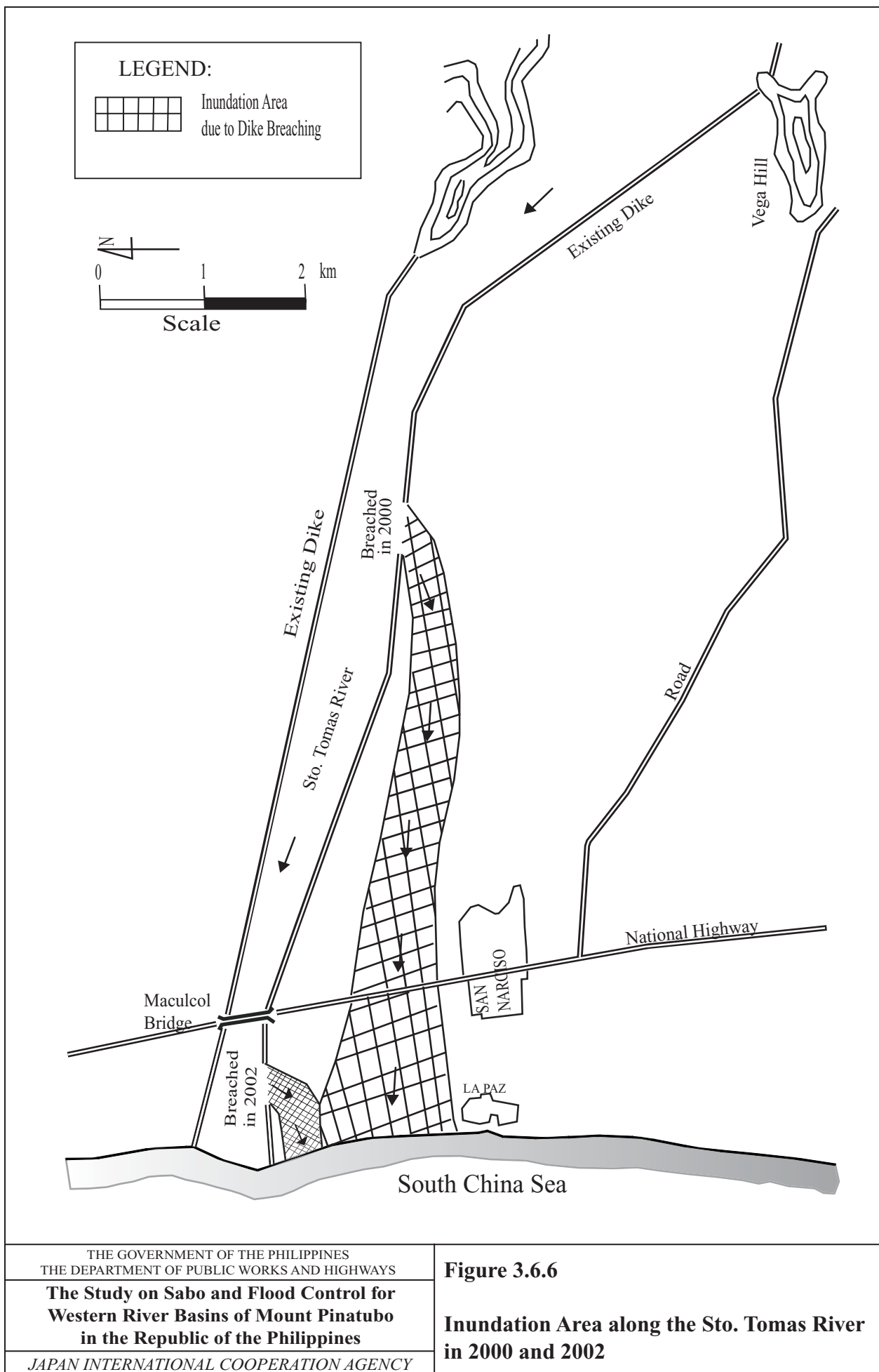
THE GOVERNMENT OF THE PHILIPPINES
THE DEPARTMENT OF PUBLIC WORKS AND HIGHWAYS

**The Study on Sabo and Flood Control for
Western River Basins of Mount Pinatubo
in the Republic of the Philippines**

JAPAN INTERNATIONAL COOPERATION AGENCY

Figure 3.6.5

**Lahar Deposit Area in the Sto. Tomas River
System**



THE GOVERNMENT OF THE PHILIPPINES
THE DEPARTMENT OF PUBLIC WORKS AND HIGHWAYS

**The Study on Sabo and Flood Control for
Western River Basins of Mount Pinatubo
in the Republic of the Philippines**

JAPAN INTERNATIONAL COOPERATION AGENCY

Figure 3.6.6

**Inundation Area along the Sto. Tomas River
in 2000 and 2002**