

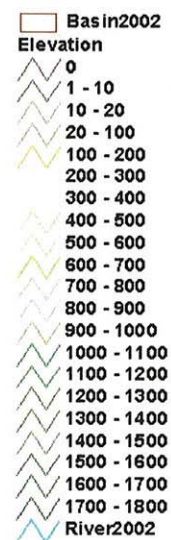
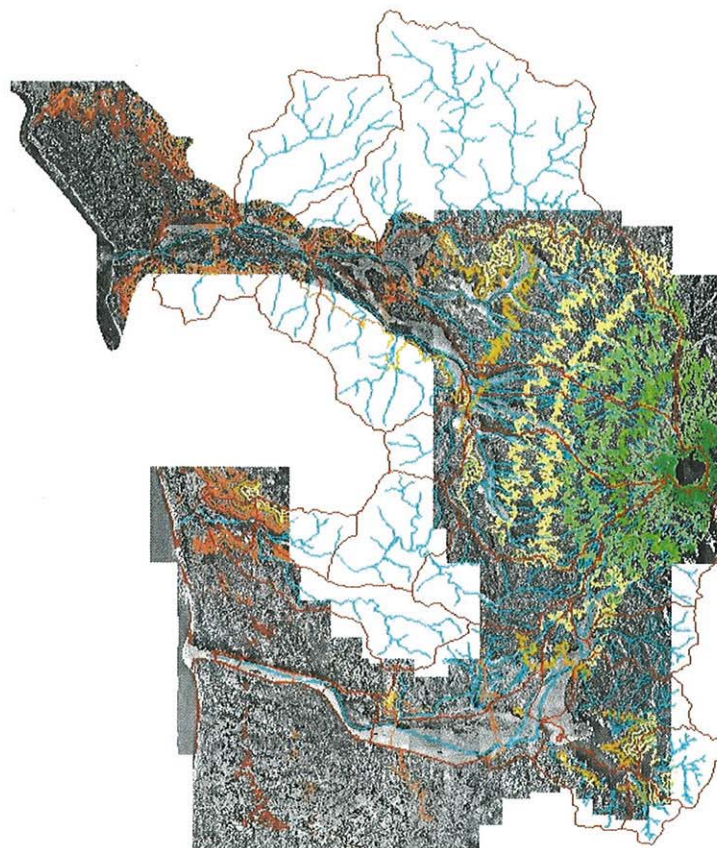
THE GOVERNMENT OF THE PHILIPPINES
THE DEPARTMENT OF PUBLIC WORKS AND HIGHWAYS

**The Study on Sabo and Flood Control for
Western River Basins of Mount Pinatubo in the
Republic of the Philippines**

JAPAN INTERNATIONAL COOPERATION AGENCY

Figure 3.2.1

Areas of Municipalities within the Study Area



5 0 5 Kilometers

Note: This map was produced based on the aerial photos taken in May and June 2002.

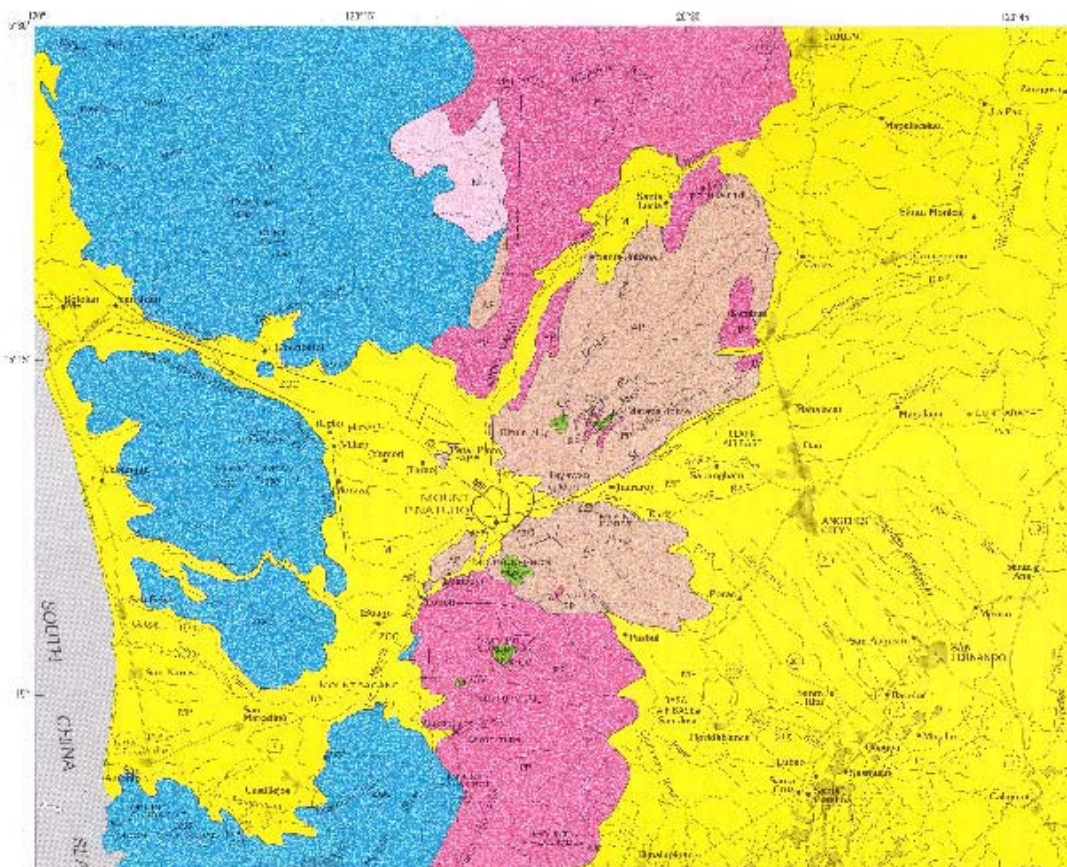
THE GOVERNMENT OF THE PHILIPPINES
THE DEPARTMENT OF PUBLIC WORKS AND HIGHWAYS

**The Study on Sabo and Flood Control for
Western River Basins of Mount Pinatubo in the
Republic of the Philippines**

JAPAN INTERNATIONAL COOPERATION AGENCY

Figure 3.3.1

Topographic Map in the Study Area



EXPLANATION OF MAP UNITS

MP	Volcanic rocks of modern Pinatubo (Holocene and late Pleistocene, 40 ka to present)—Mainly dacitic pyroclastic-flow and lahar deposits
AP	Deposits of ancestral Pinatubo (Pleistocene)—Andesitic and dacitic pyroclastic-flow and lahar deposits, and lava flows
CV	Ancestral satellite vent deposits (Pleistocene)—Andesite and dacite domes and plugs, contemporaneous with deposits of ancestral Pinatubo
NI	Neogene intrusives (Pliocene? and Miocene)—Granodiorite and diorite porphyry
PP	Pre-Pinatubo sedimentary and volcanic rocks, mostly Tarlac Formation (Early Pliocene and late Miocene)
ZOC	Zambales Ophiolite complex (Eocene)—Mainly peridotite, gabbro, and basalt

EXPLANATION OF MAP SYMBOLS

	Contact—Dashed where inferred
	Fault—Dashed where inferred; MF, Maraunot Fault; SL, Sacobia Lineament
	Rim of Tayawan Caldera
	Boundary of caldera formed on June 15, 1991

Source: "Fire and Mud", 1996

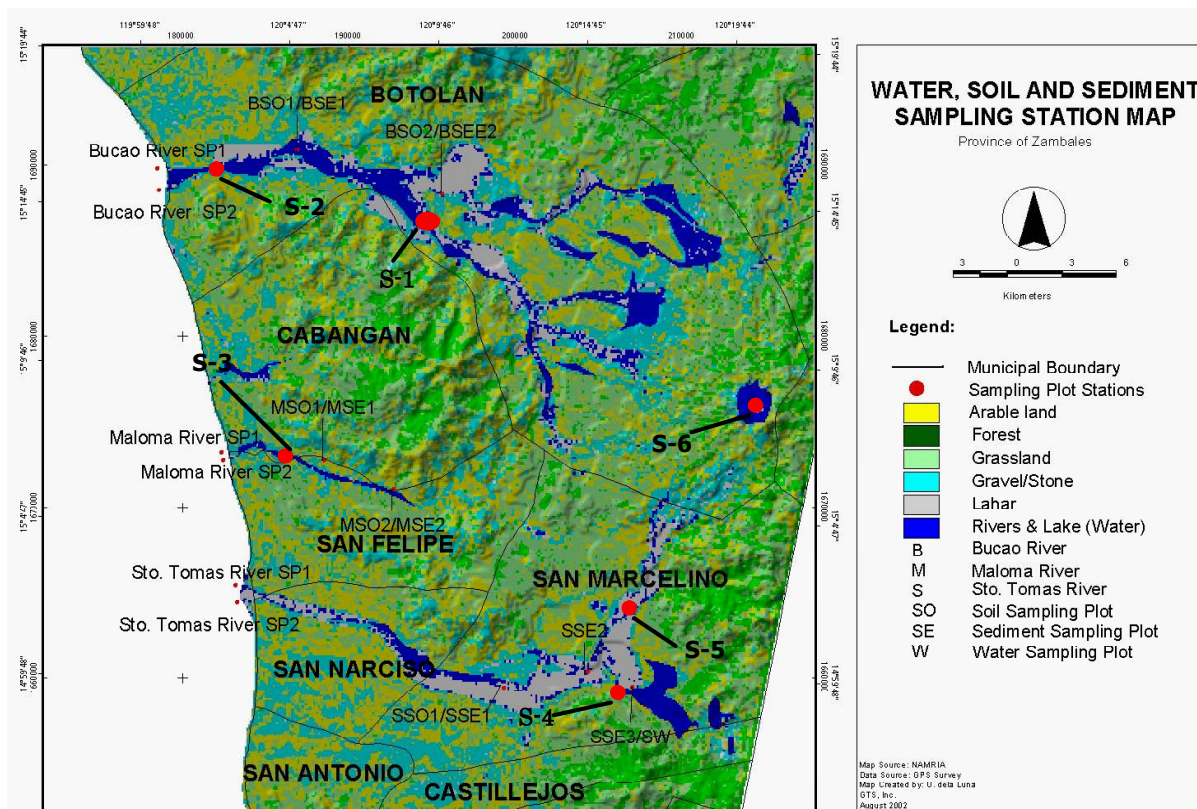
THE GOVERNMENT OF THE PHILIPPINES
THE DEPARTMENT OF PUBLIC WORKS AND HIGHWAYS

**The Study on Sabo and Flood Control for
Western River Basins of Mount Pinatubo in the
Republic of the Philippines**

JAPAN INTERNATIONAL COOPERATION AGENCY

Figure 3.3.2

**Geological Map of Mount Pinatubo and
Environs**



THE GOVERNMENT OF THE PHILIPPINES
THE DEPARTMENT OF PUBLIC WORKS AND HIGHWAYS

**The Study on Sabo and Flood Control for
Western River Basins of Mount Pinatubo in the
Republic of the Philippines**

JAPAN INTERNATIONAL COOPERATION AGENCY

Figure 3.3.3

**Water, Soil and Sediment Sampling Locations,
also the Land Cover Image (August 2002)**