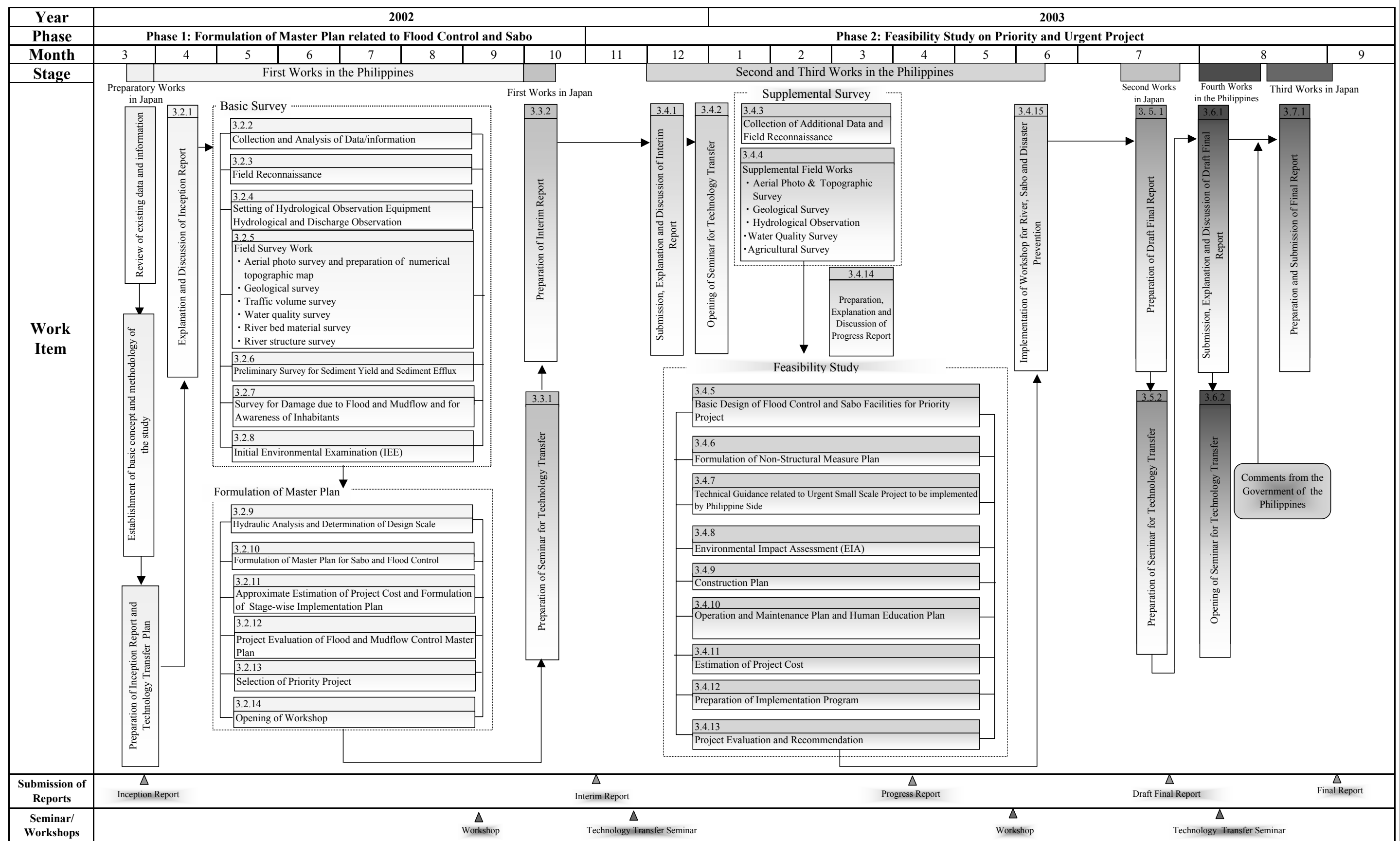


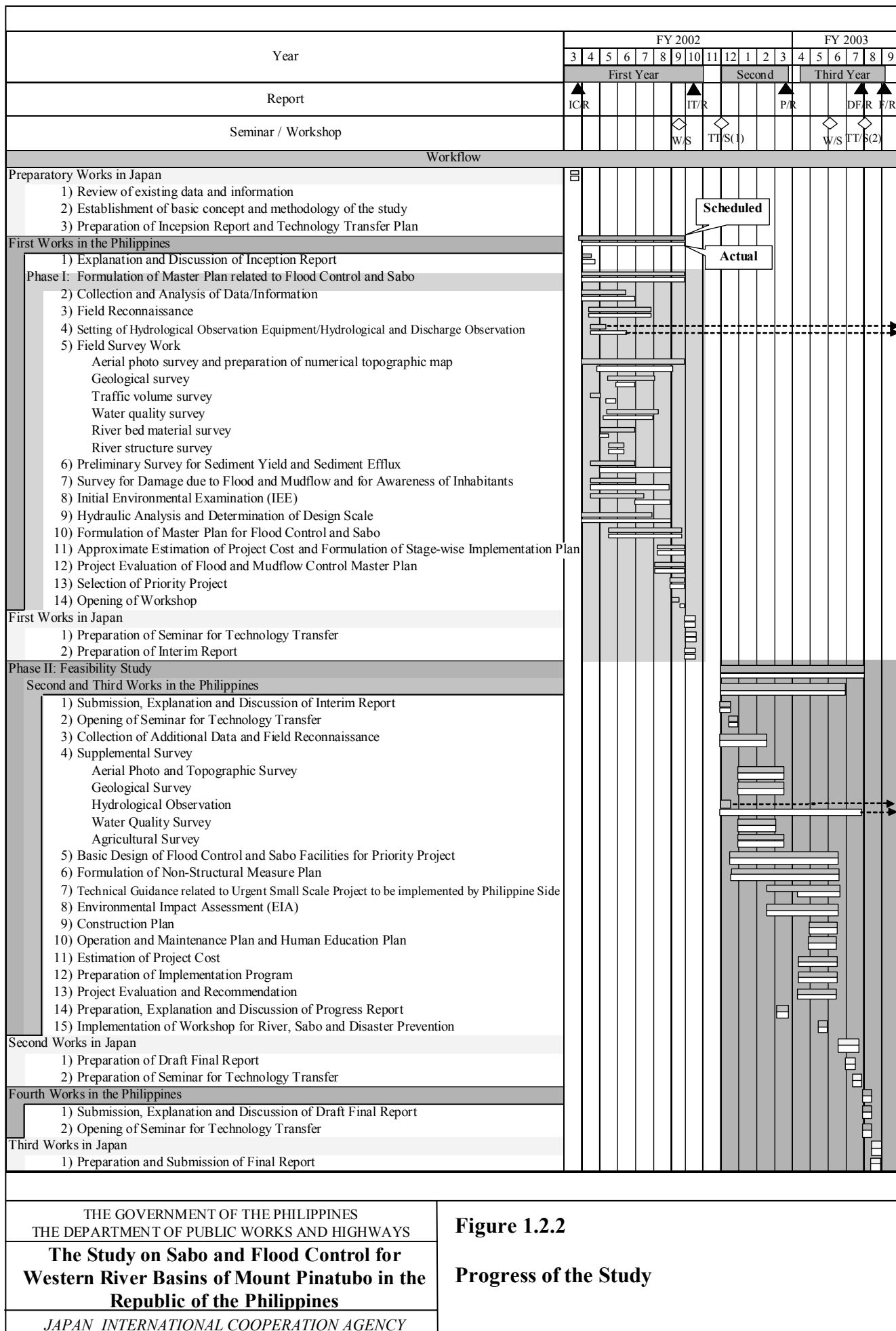
*The Study on Sabo and Flood Control for Western River Basins of Mount Pinatubo
in the Republic of the Philippines
Final Report
Main Report*

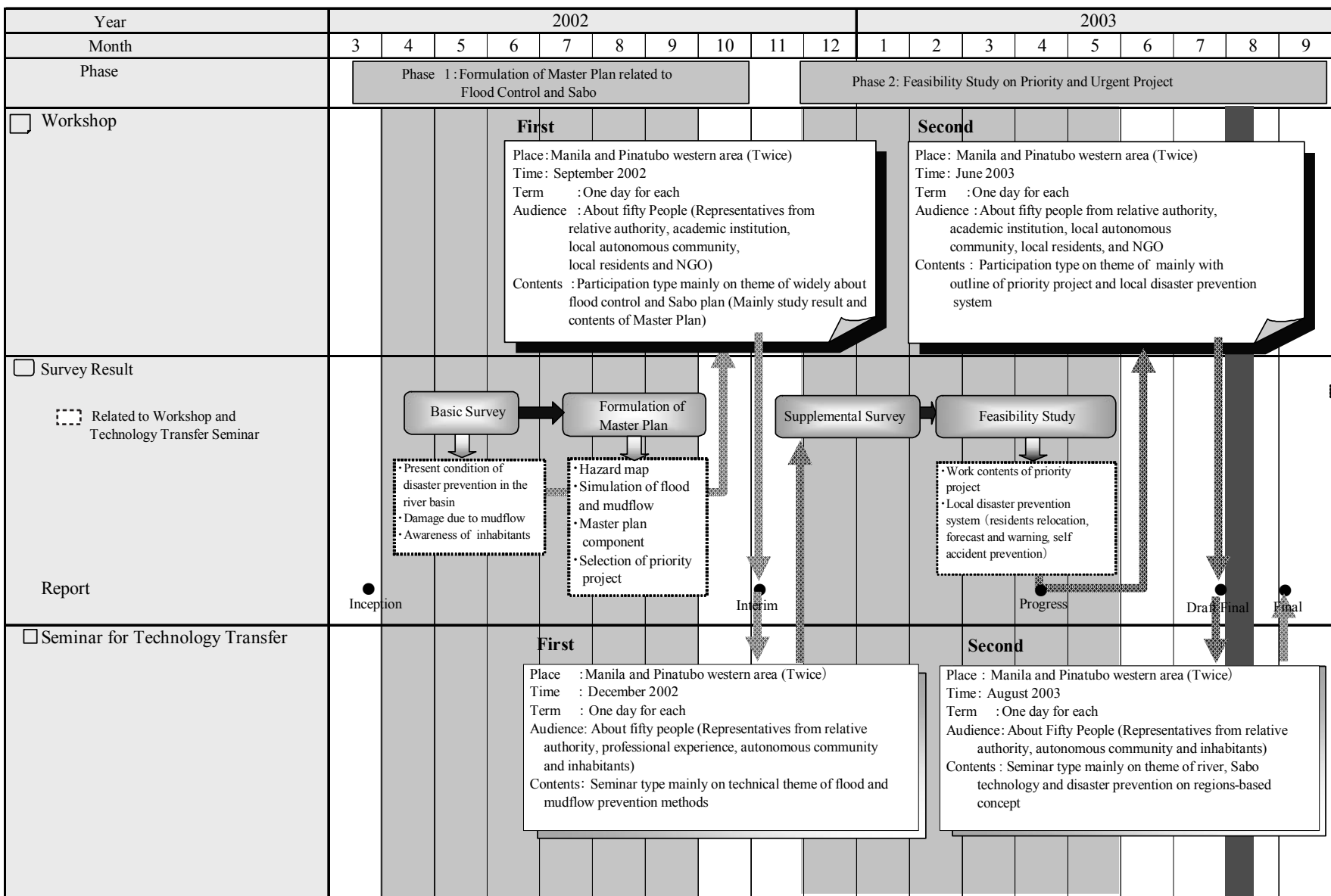
Figures



THE GOVERNMENT OF THE PHILIPPINES
THE DEPARTMENT OF PUBLIC WORKS AND HIGHWAYS
**The Study on Sabo and Flood Control for
Western River Basins of Mount Pinatubo
in the Republic of the Philippines**
JAPAN INTERNATIONAL COOPERATION AGENCY

Figure 1.2.1
Overall Study Schedule





THE GOVERNMENT OF THE PHILIPPINES
THE DEPARTMENT OF PUBLIC WORKS AND HIGHWAYS

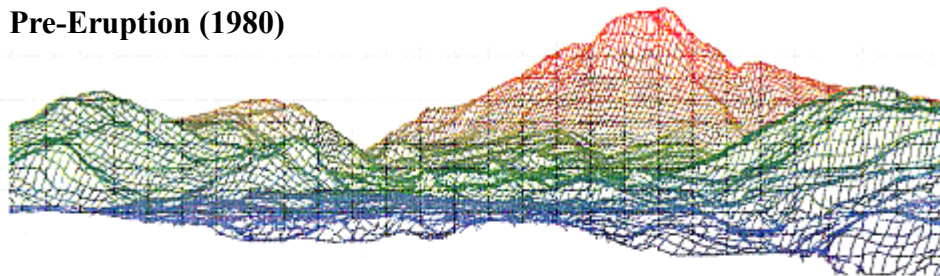
Figure 1.3.1

The Study on Sabo and Flood Control for
Western River Basins of Mount Pinatubo
in the Republic of the Philippines

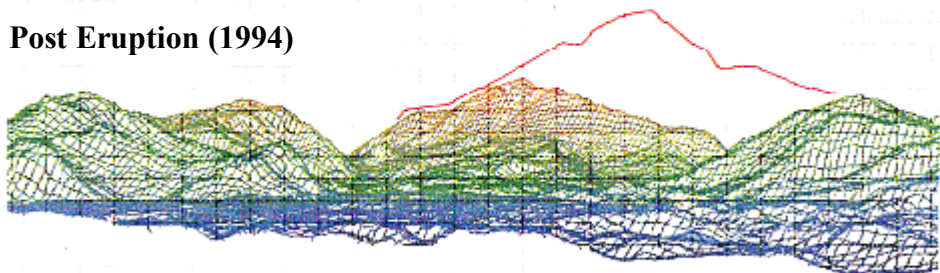
General Schedule and Outline of Workshop
and Seminar for Transfer of Technology

JAPAN INTERNATIONAL COOPERATION AGENCY

Pre-Eruption (1980)

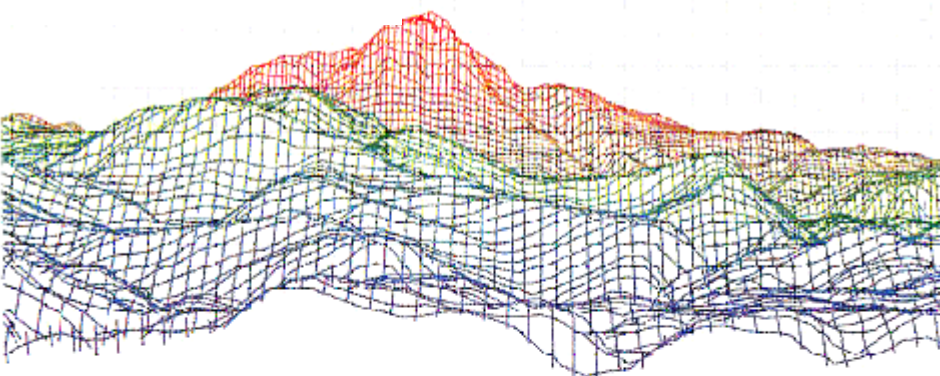


Post Eruption (1994)

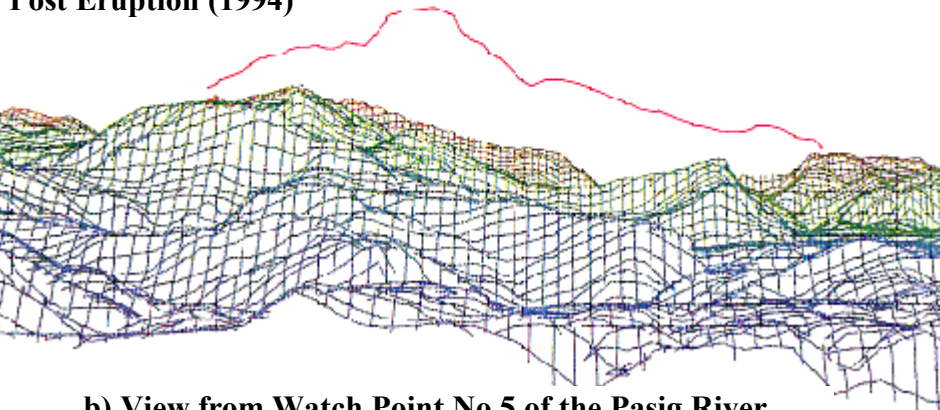


a) View from Clark Field

Pre-Eruption (1980)



Post Eruption (1994)



b) View from Watch Point No.5 of the Pasig River

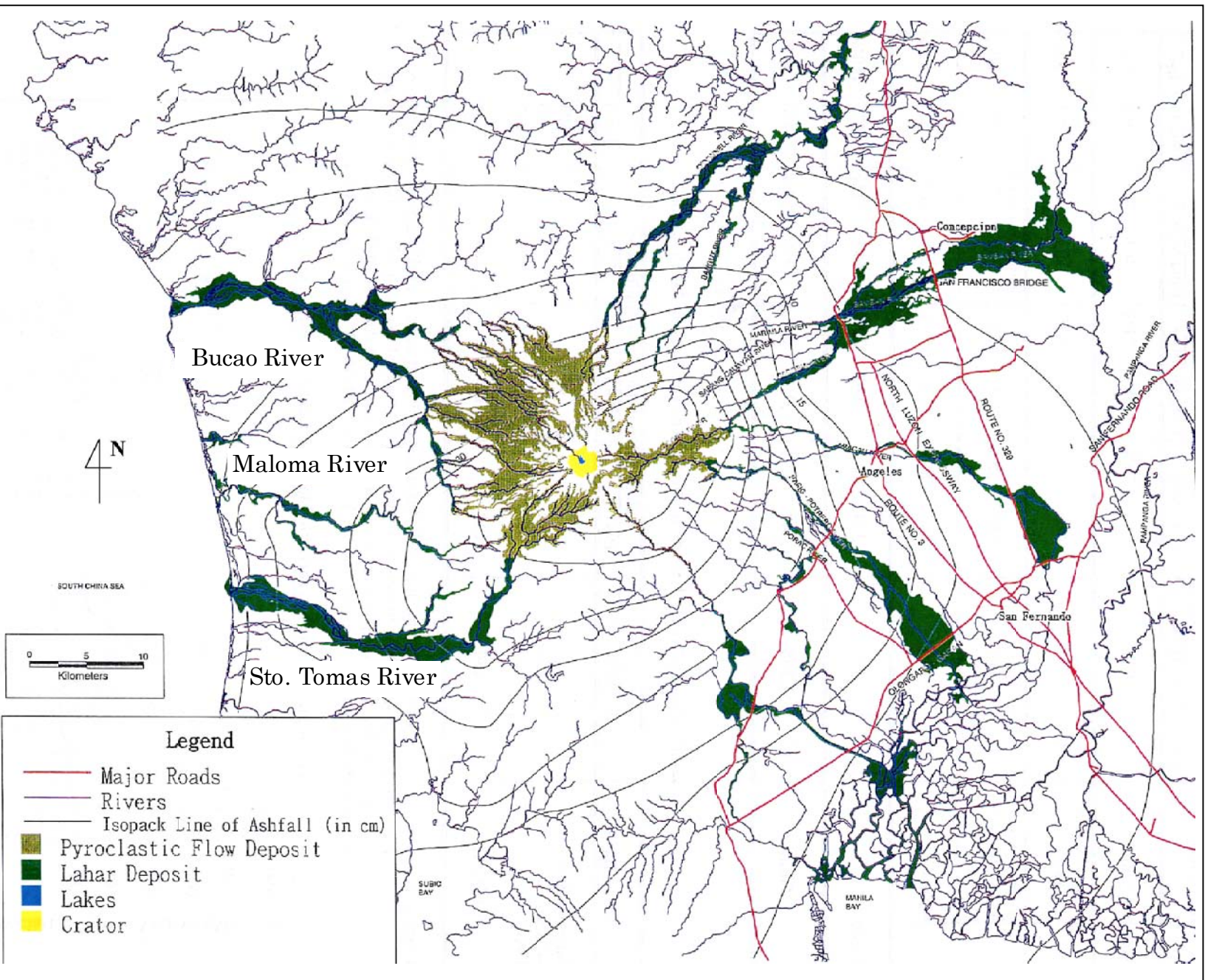
THE GOVERNMENT OF THE PHILIPPINES
THE DEPARTMENT OF PUBLIC WORKS AND HIGHWAYS

**The Study on Sabo and Flood Control for
Western River Basins of Mount Pinatubo in the
Republic of the Philippines**

JAPAN INTERNATIONAL COOPERATION AGENCY

Figure 2.1.1

**View of Mount Pinatubo before and after
Eruption**



Source: The Study on Flood and Mudflow Control for Sacobia-Bamban/Abacan River Draining from Mt. Pinatubo, 1996

THE GOVERNMENT OF THE PHILIPPINES
THE DEPARTMENT OF PUBLIC WORKS AND HIGHWAYS

The Study on Sabo and Flood Control for Western River Basins of Mount Pinatubo in the Republic of the Philippines

JAPAN INTERNATIONAL COOPERATION AGENCY

Figure 2.1.2

Pinatubo Volcano Disaster Map

1991 before eruption



1991 after eruption



September 1994



May 2002



Figure 2.1.3

Pyroclastic Flow Deposits in the Marikina River