

Faixas Prioritárias para Ônibus

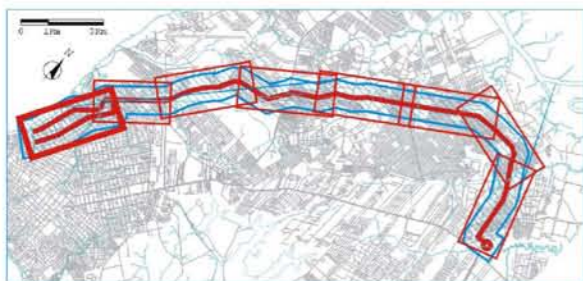
Área Central de Belém



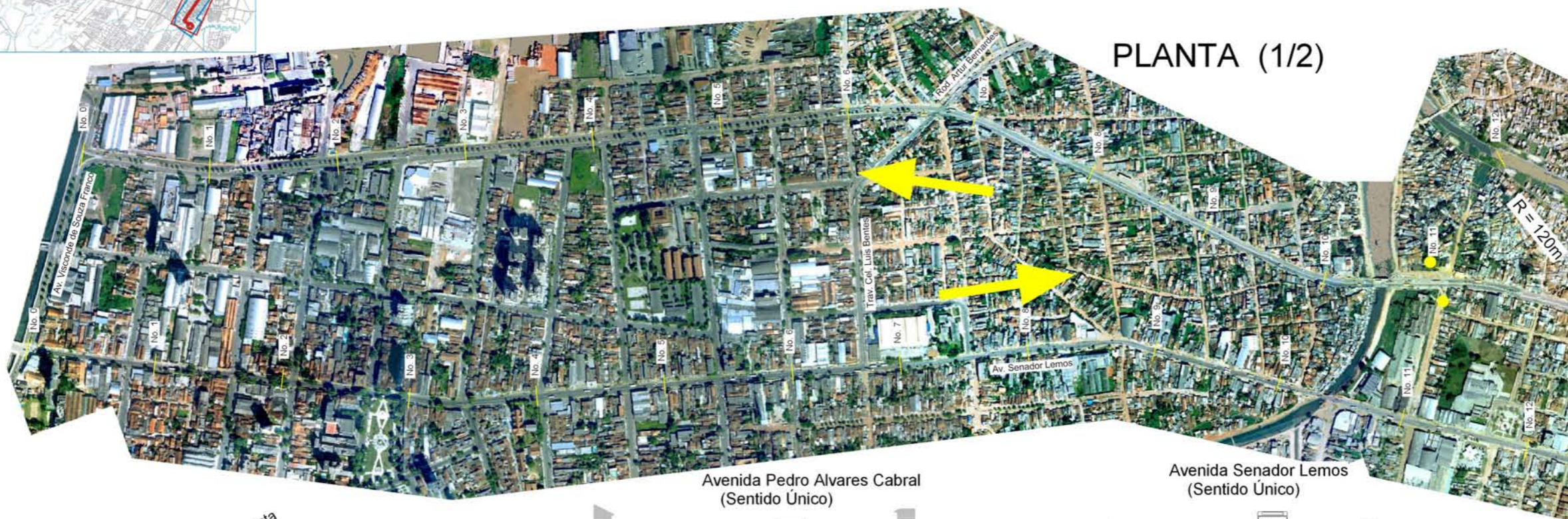
PLANTA

Faixa Prioritária para Ônibus

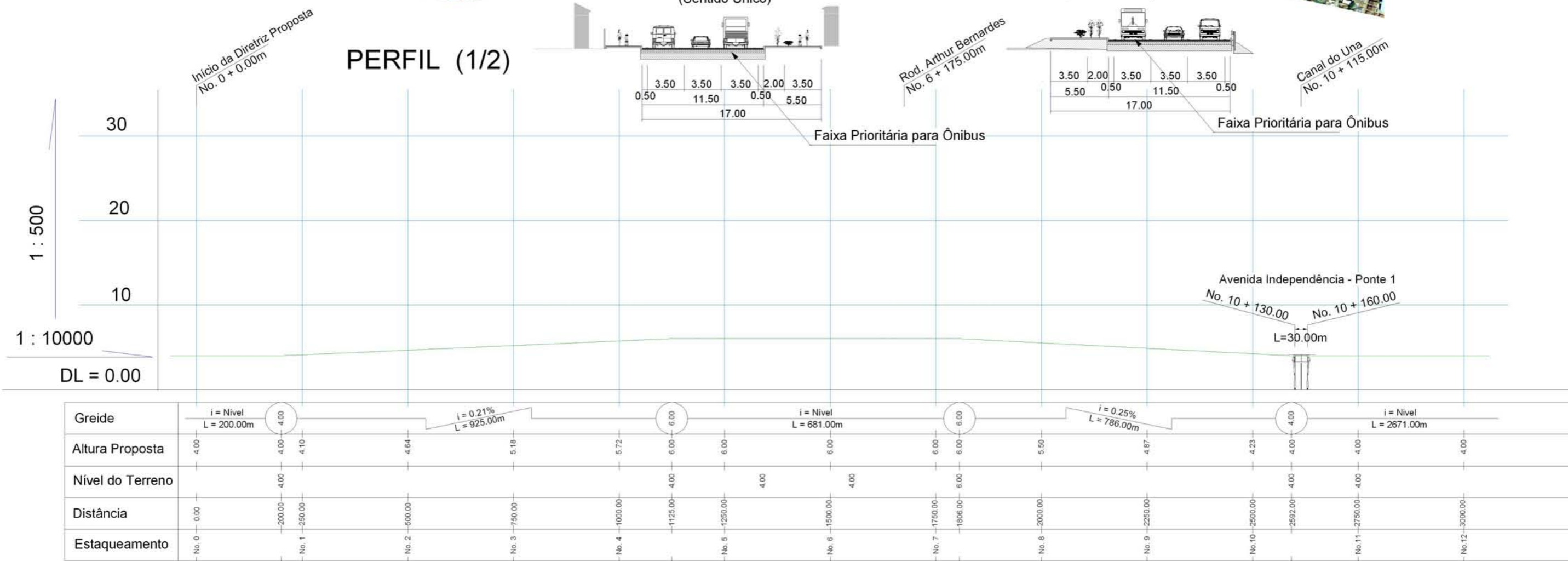
Avenida Independência (L= 5.263m)



PLANTA (1/2)



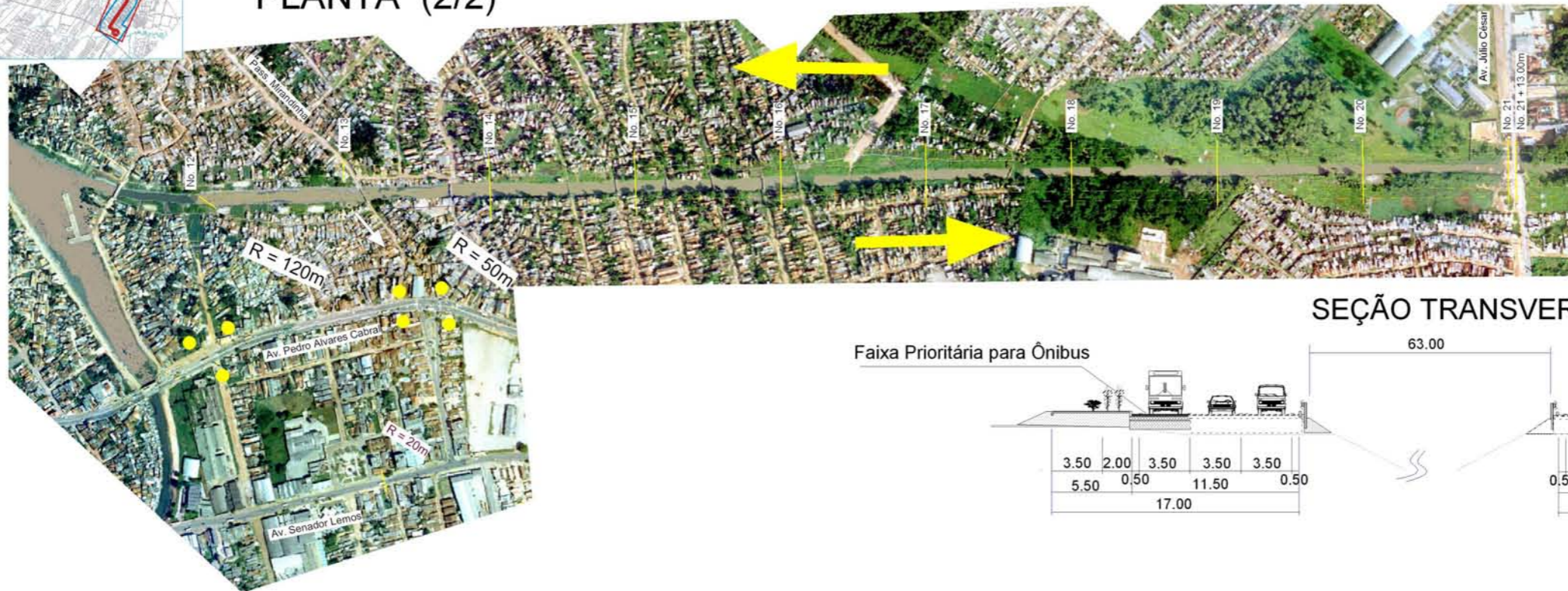
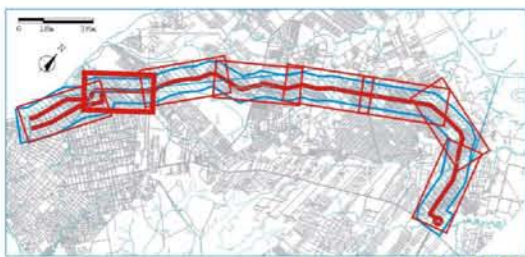
PERFIL (1/2)



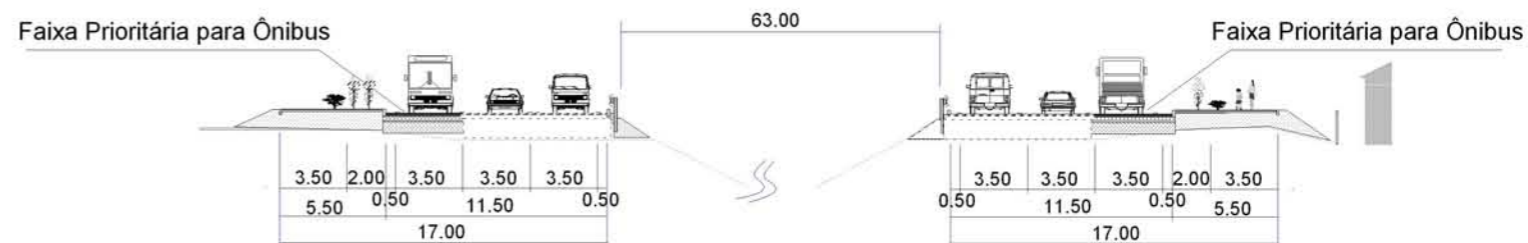
Faixa Prioritária para Ônibus

Avenida Independência (L= 5.263m)

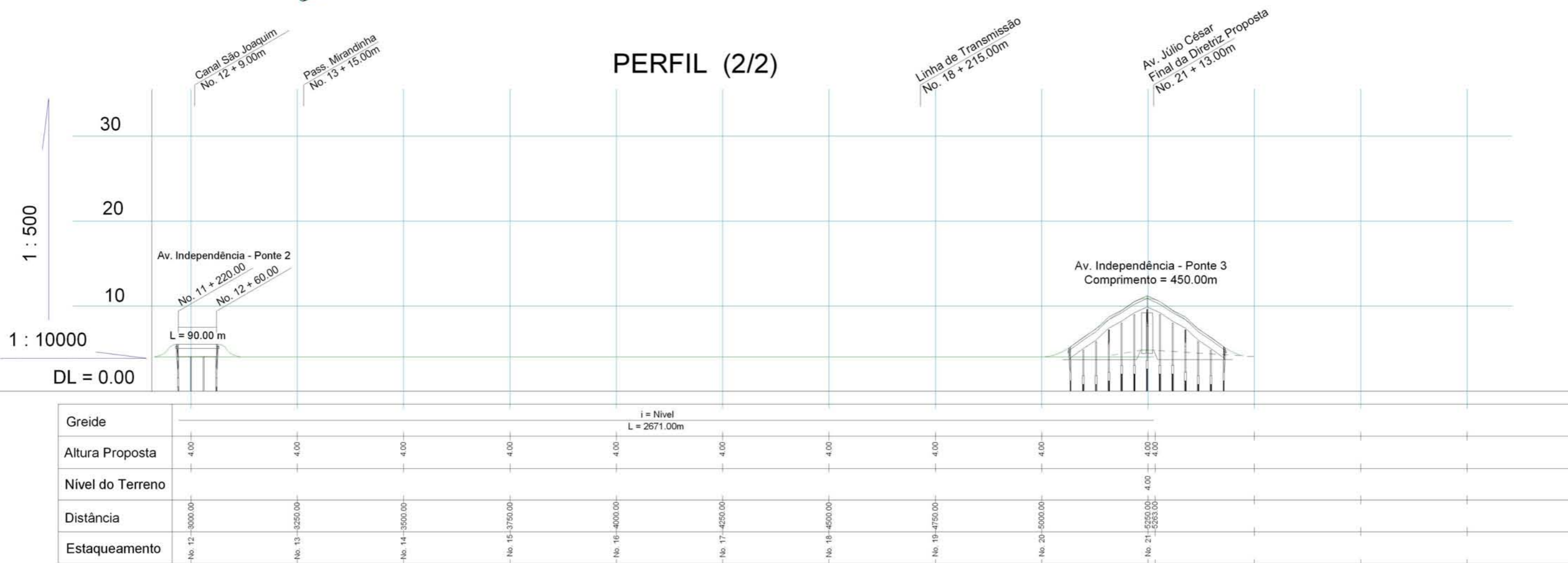
PLANTA (2/2)



SEÇÃO TRANSVERSAL



PERFIL (2/2)



Faixa Prioritária para Ônibus Icoaraci



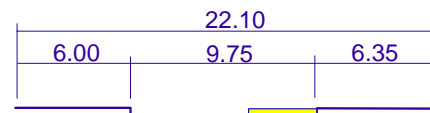
Travessa Cristóvão Colombo



Faixa Prioritária para Ônibus



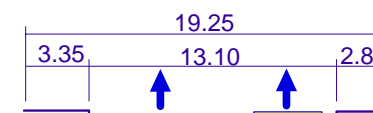
Rua Manoel Barata



Faixa Prioritária para Ônibus

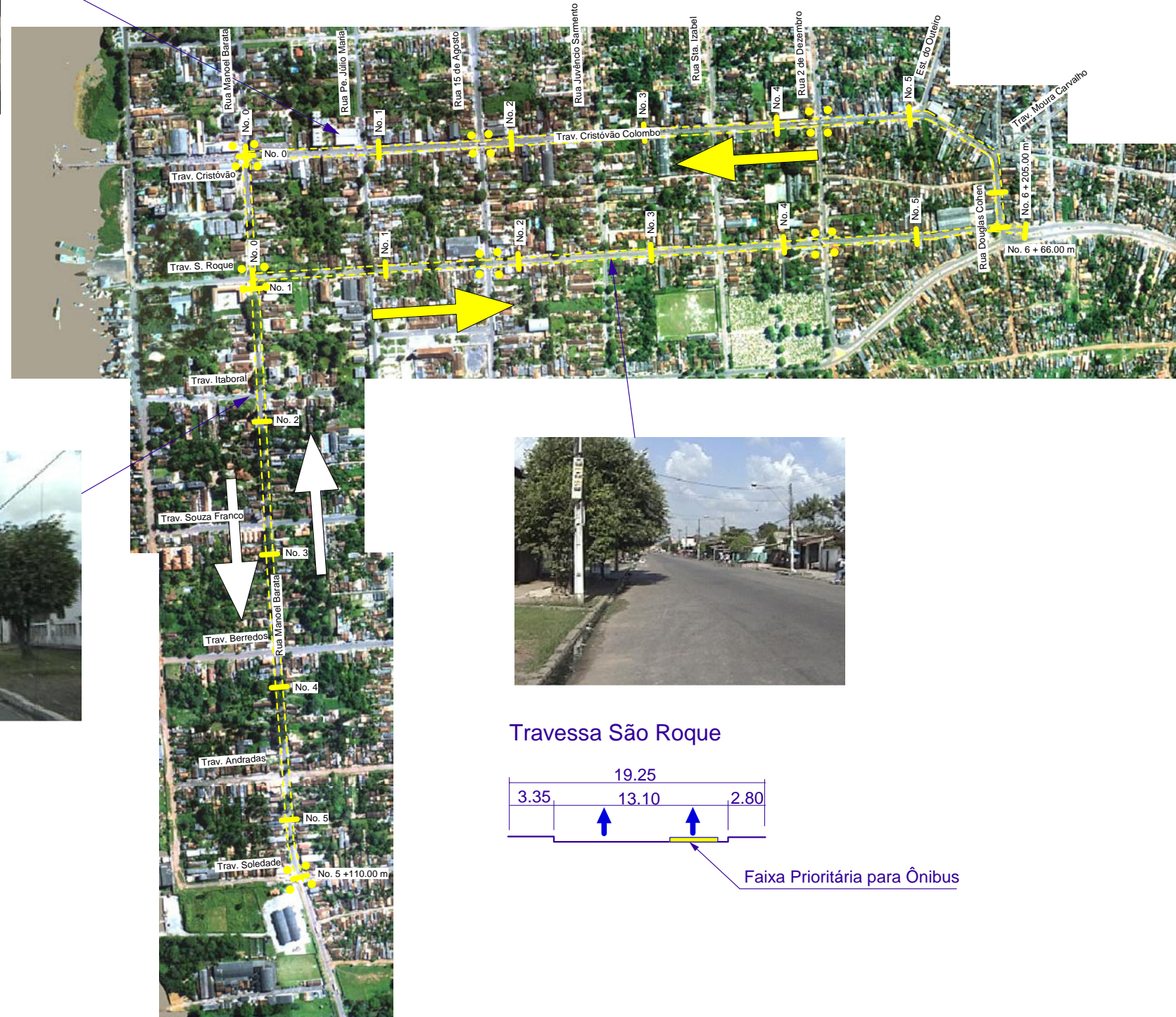


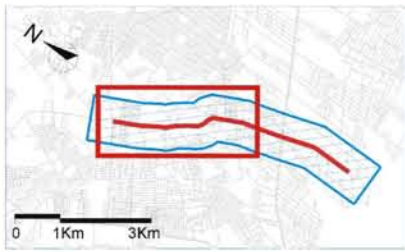
Travessa São Roque



Faixa Prioritária para Ônibus

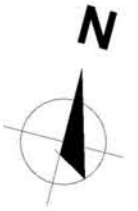
PLANTA





Faixa Prioritária para Ônibus

Avenida Mário Covas (L = 3.550m)

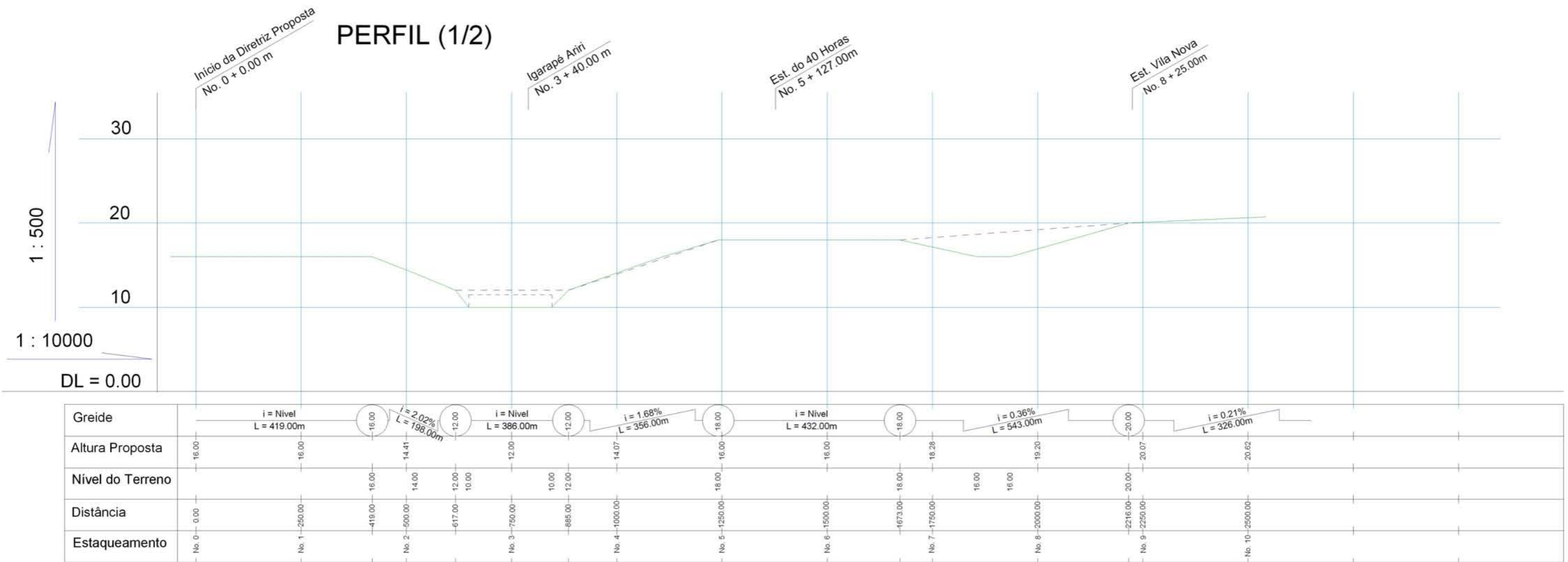


PLANTA (1/2)



Terminal de Integração -D

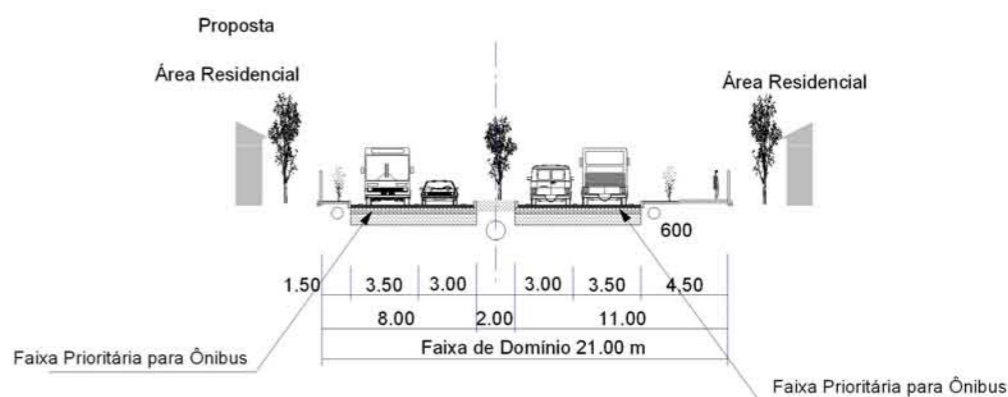
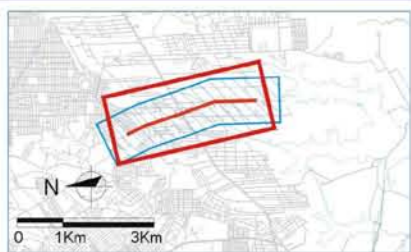
PERFIL (1/2)



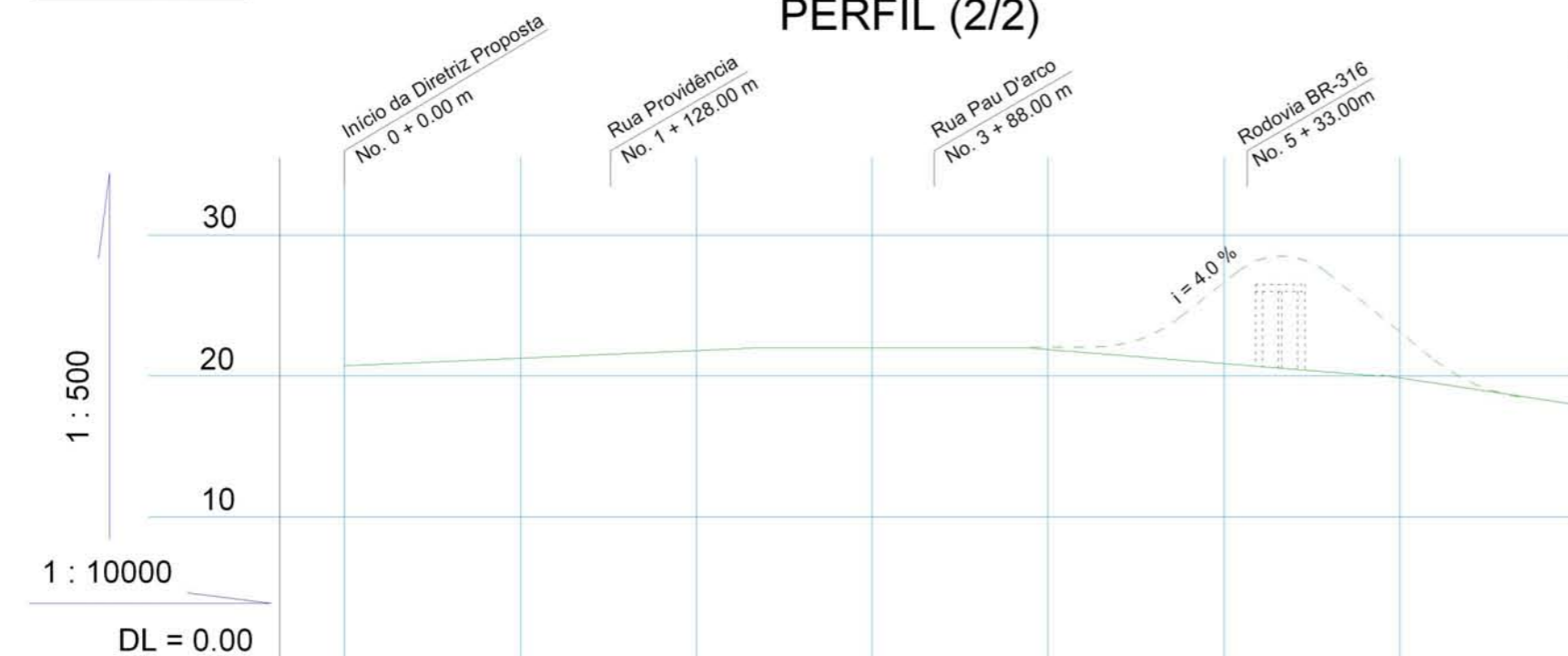
Faixa Prioritária para Ônibus

Avenida Mário Covas (L = 3.550m)

PLANTA (2/2)



PERFIL (2/2)



Greide	i = 0.22% L = 585.00m		i = Nivel L = 386.00m		i = 0.40% L = 490.00m	
Altura Proposta	20.71	21.26	21.81	22.00	21.88	20.86
Nível do Terreno	20.00	22.00	22.00	22.00	20.00	19.72
Distância	No. 0 - 0.00	No. 1 - 250.00	No. 2 - 500.00	No. 3 - 750.00	No. 4 - 1000.00	No. 5 - 1250.00
Estaqueamento	No. 0	No. 1	No. 2	No. 3	No. 4	No. 5