

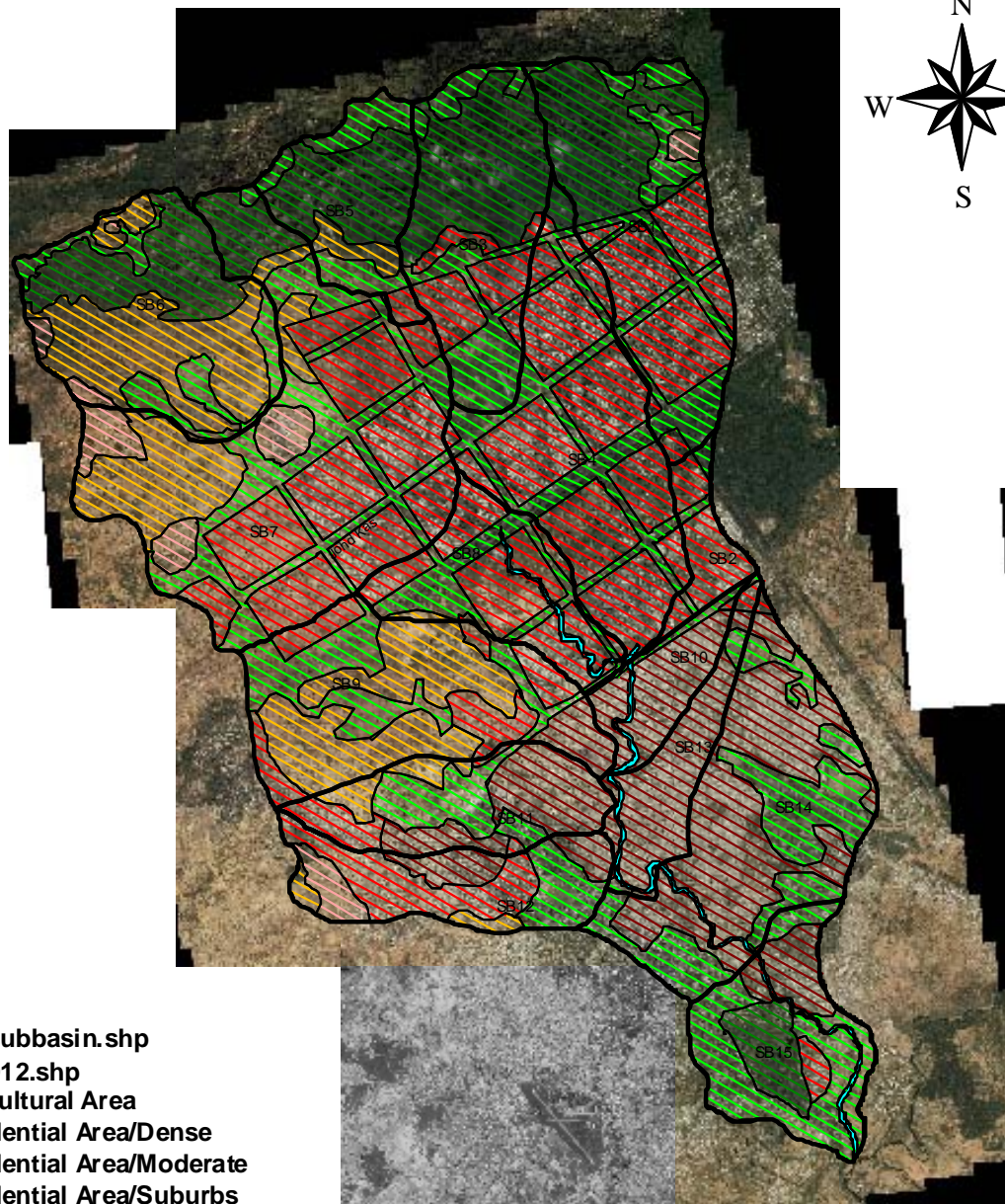
- Newsubbasin.shp
- Landuse2001.shp
- ▨ Agricultural Area
- ▨ Residential Area/Dense
- ▨ Residential Area/Moderate
- ▨ Residential Area/Suburbs
- ▨ Forest
- ▨ Bare Land

THE STUDY ON COMPREHENSIVE FLOOD MITIGATION  
AND ENVIRONMENTAL IMPROVEMENT PLAN  
OF LAI NULLAH BASIN  
IN THE ISLAMIC REPUBLIC OF PAKISTAN

JAPAN INTERNATIONAL COOPERATION AGENCY

Fig. I.4

Land Use of the Study Area in 2001

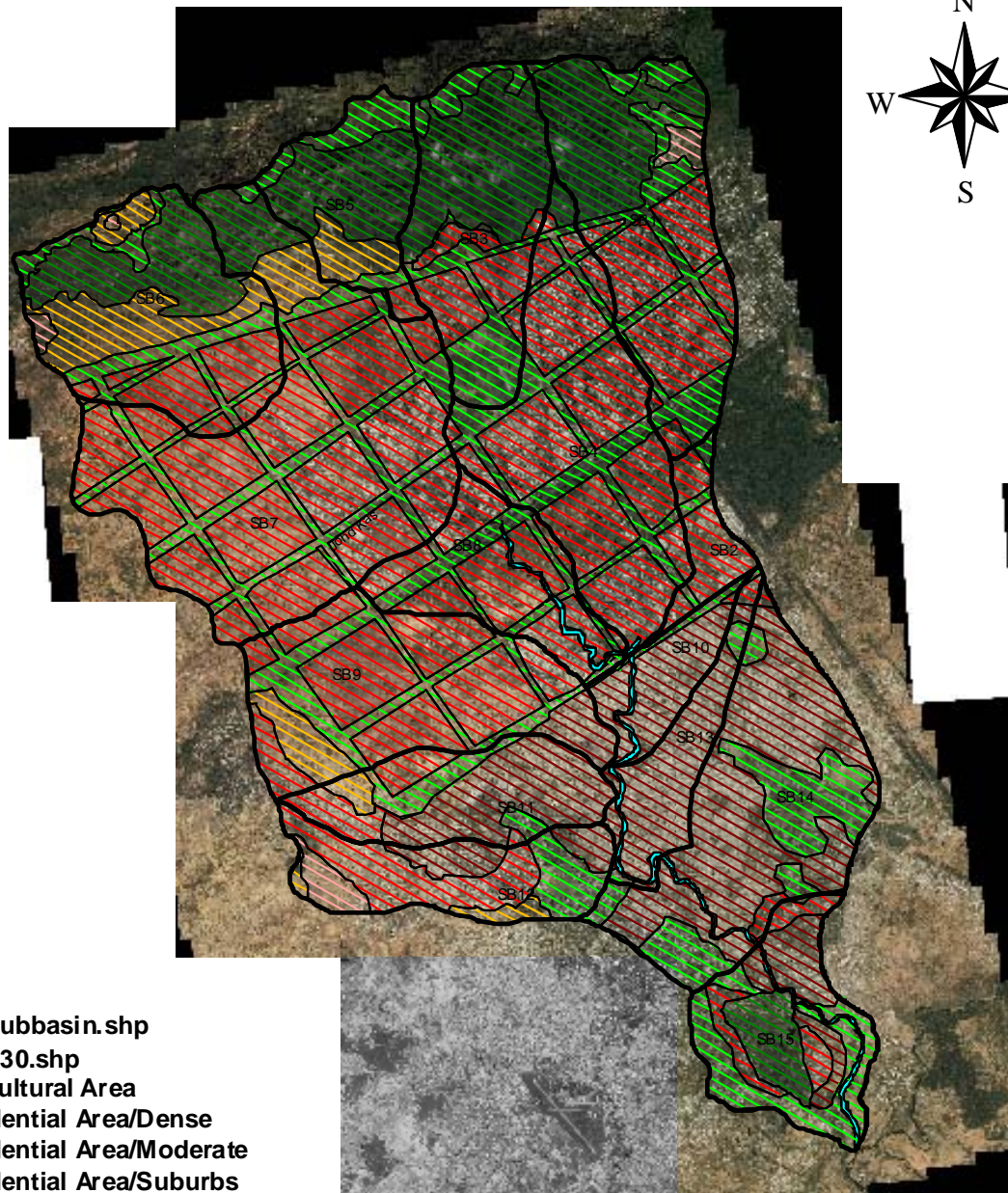









THE STUDY ON COMPREHENSIVE FLOOD MITIGATION  
AND ENVIRONMENTAL IMPROVEMENT PLAN  
OF LAI NULLAH BASIN  
IN THE ISLAMIC REPUBLIC OF PAKISTAN

JAPAN INTERNATIONAL COOPERATION AGENCY

Fig. I.5

Land Use of the Study Area in 2012



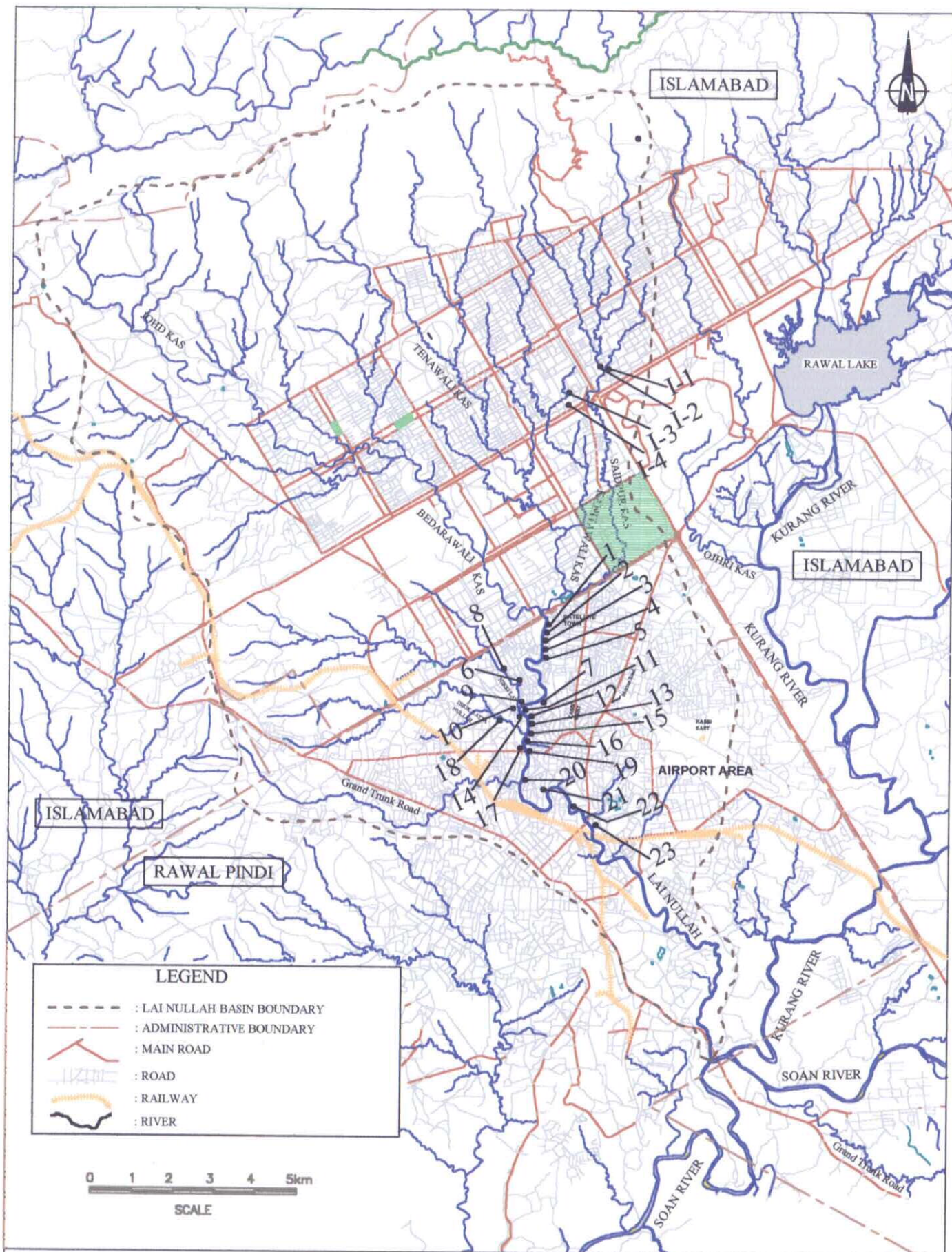
-  Newsubbasin.shp
-  Landuse2030.shp
-  Agricultural Area
-  Residential Area/Dense
-  Residential Area/Moderate
-  Residential Area/Suburbs
-  Forest

THE STUDY ON COMPREHENSIVE FLOOD MITIGATION  
AND ENVIRONMENTAL IMPROVEMENT PLAN  
OF LAI NULLAH BASIN  
IN THE ISLAMIC REPUBLIC OF PAKISTAN

JAPAN INTERNATIONAL COOPERATION AGENCY

Fig. I.6

Land Use of the Study Area in 2030



THE STUDY ON COMPREHENSIVE FLOOD MITIGATION  
AND ENVIRONMENTAL IMPROVEMENT PLAN  
OF LAI NULLAH BASIN  
IN THE ISLAMIC REPUBLIC OF PAKISTAN

JAPAN INTERNATIONAL COOPERATION AGENCY

Fig. I.7

Locations of Interview for Social Environmental Survey