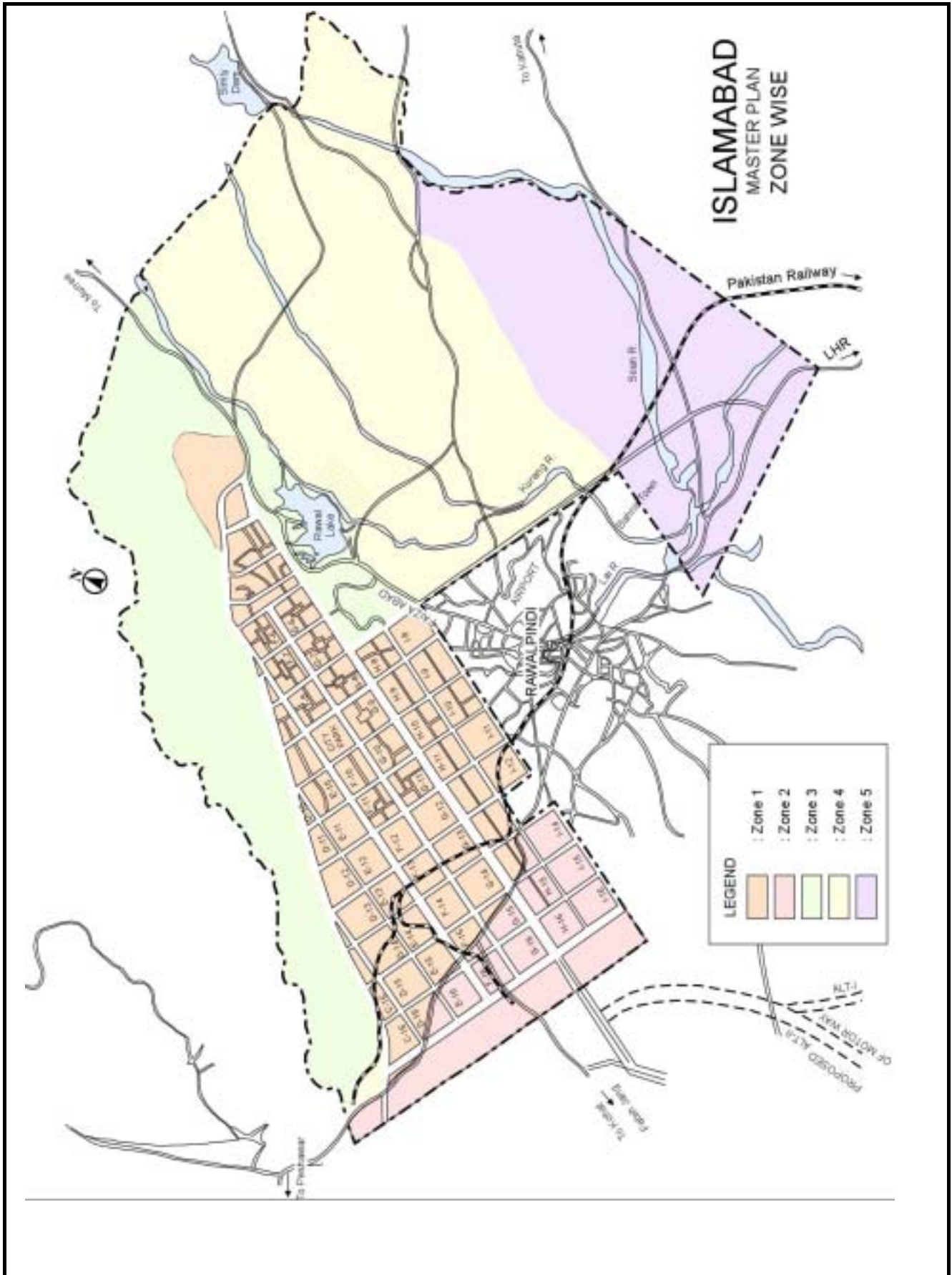


***SECTOR I***

***FIGURES***

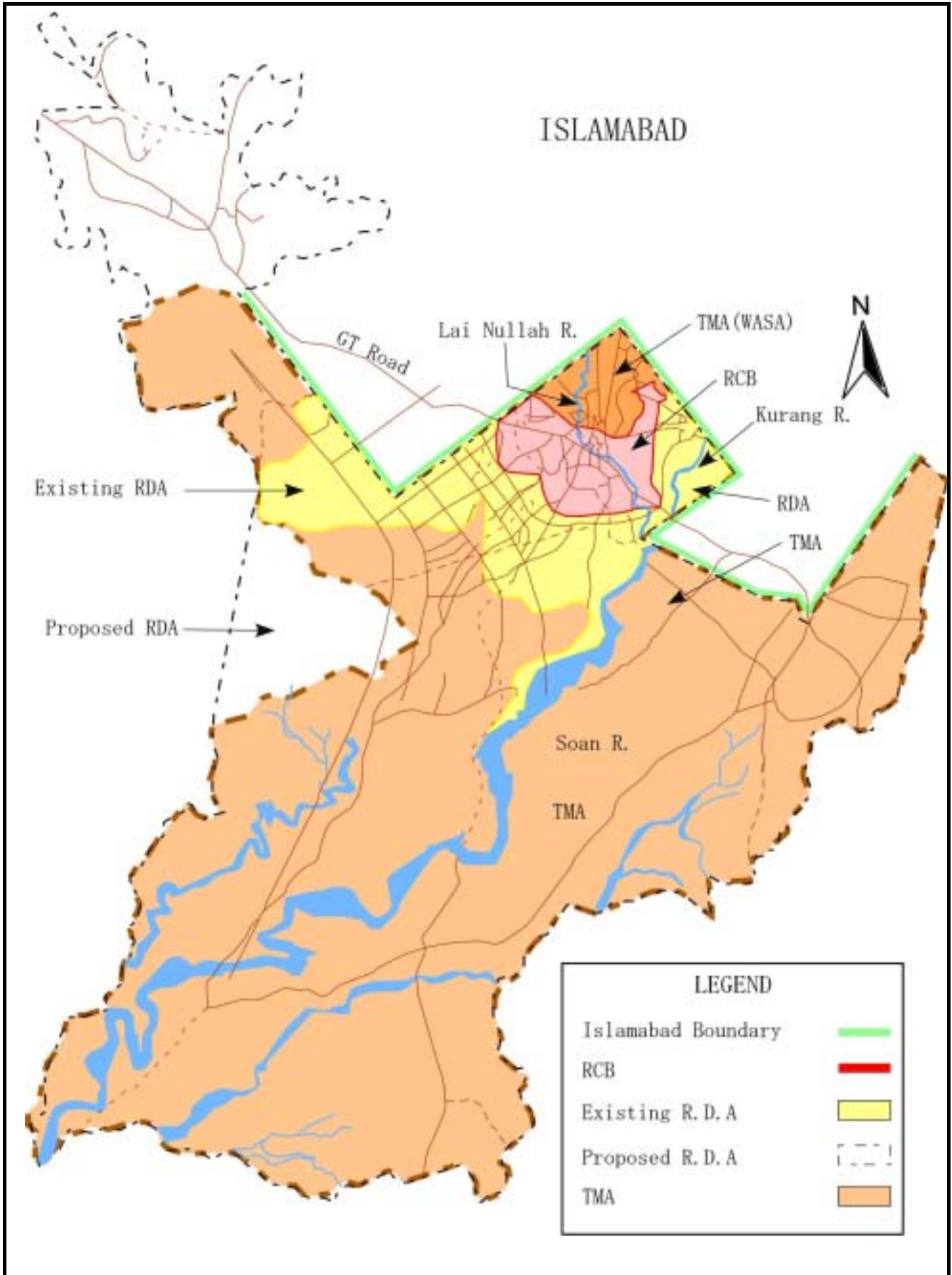


THE STUDY ON COMPREHENSIVE FLOOD MITIGATION  
AND ENVIRONMENTAL IMPROVEMENT PLAN  
OF LAI NULLAH BASIN  
IN THE ISLAMIC REPUBLIC OF PAKISTAN

Fig. I.1.

Islamabad Area of the Master Plan

JAPAN INTERNATIONAL COOPERATION AGENCY



THE STUDY ON COMPREHENSIVE FLOOD MITIGATION  
AND ENVIRONMENTAL IMPROVEMENT PLAN  
OF LAI NULLAH BASIN  
IN THE ISLAMIC REPUBLIC OF PAKISTAN

JAPAN INTERNATIONAL COOPERATION AGENCY

Fig. I.2.

Jurisdiction and Administration of Rawalpindi

