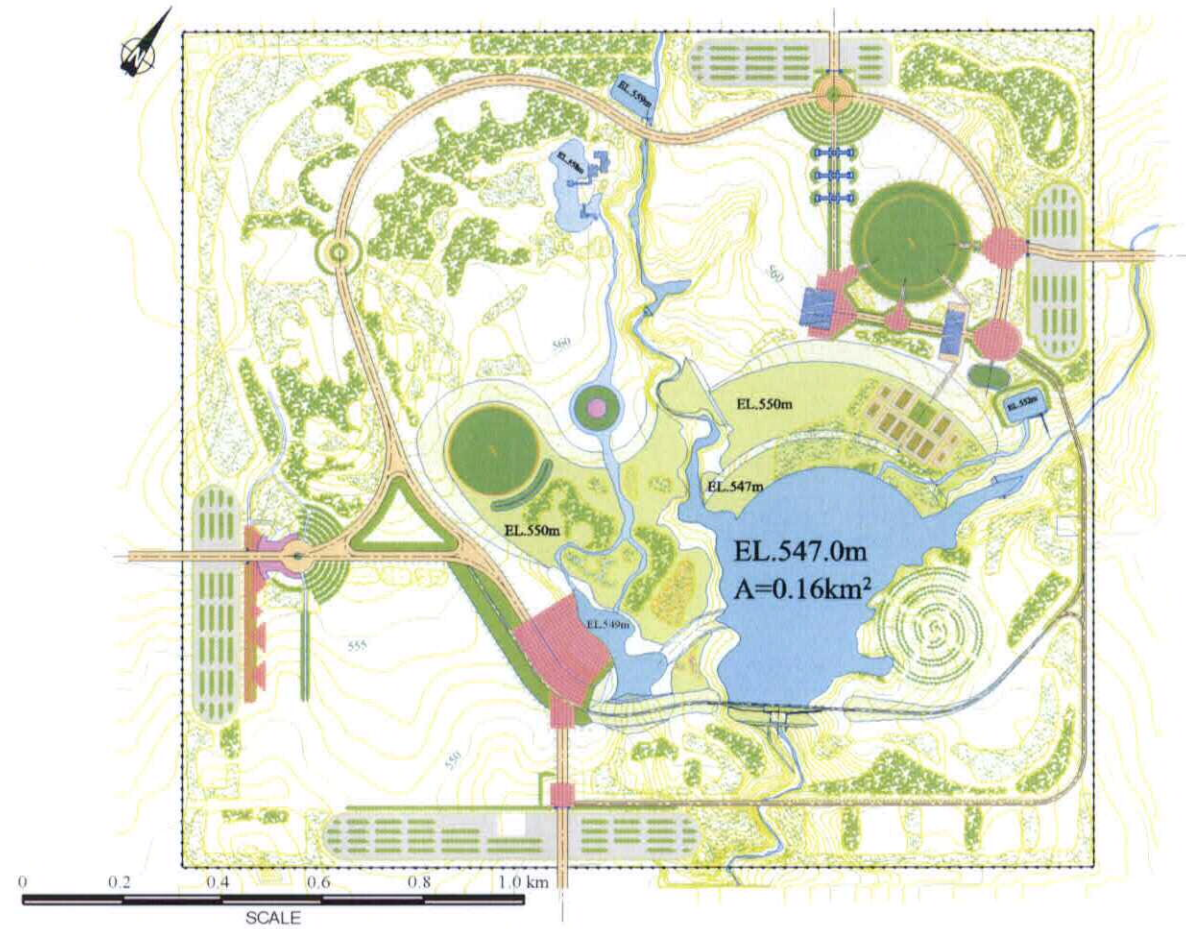


Flooding (5-year Return Period)

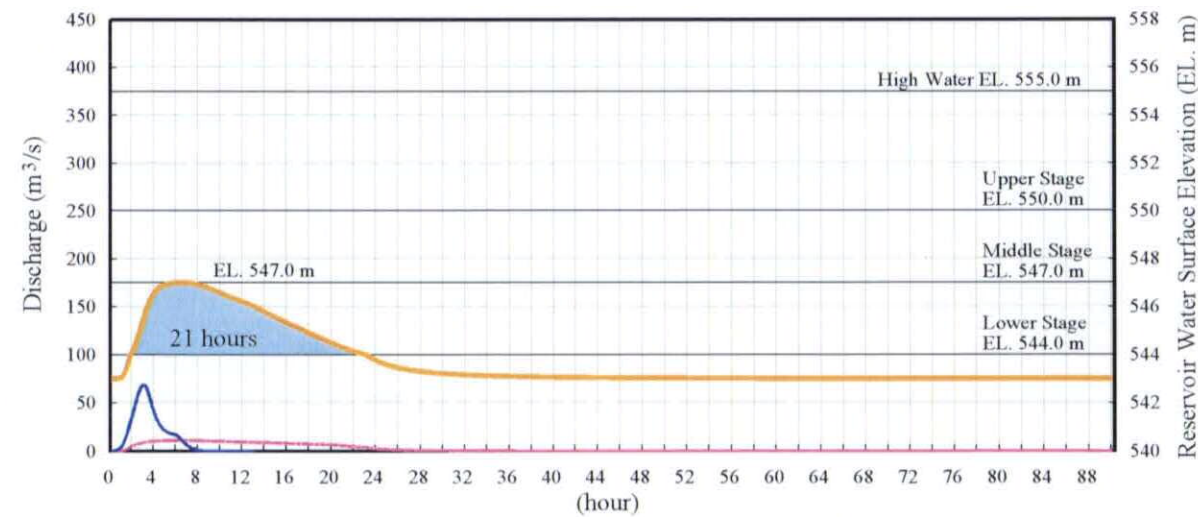


Muximum Inundation Area during Flood

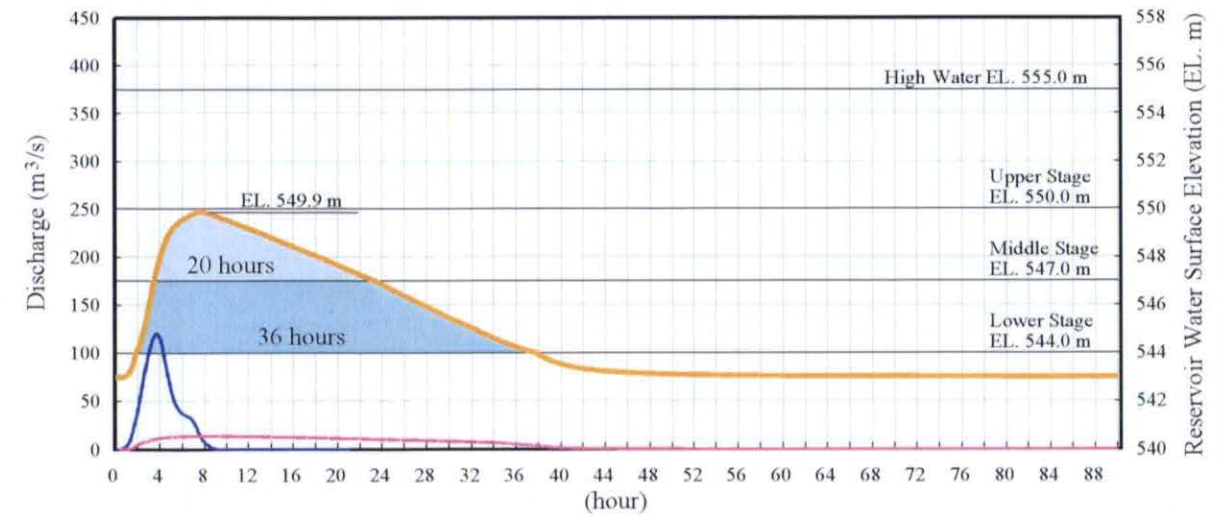
Flooding (10-year Return Period)



Muximum Inundation Area during Flood



Duration of Inundation

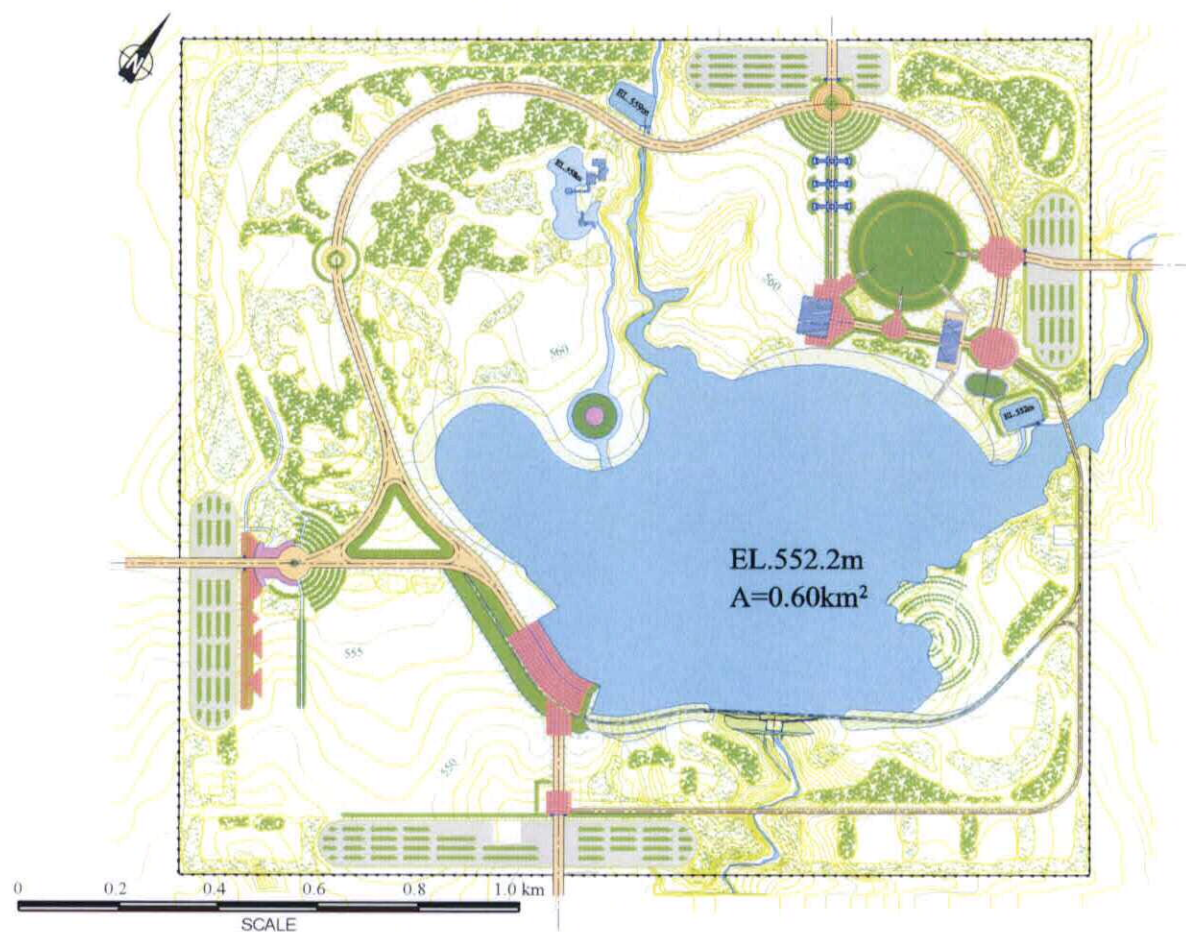


Duration of Inundation

THE STUDY ON COMPREHENSIVE FLOOD MITIGATION
AND ENVIRONMENTAL IMPROVEMENT PLAN
OF LAI NULLAH BASIN
IN THE ISLAMIC REPUBLIC OF PAKISTAN
JAPAN INTERNATIONAL COOPERATION AGENCY

Fig. C.18
Inundation of Community Pond
(during 5-year and 10-year Return Period)

Flooding (25-year Return Period)

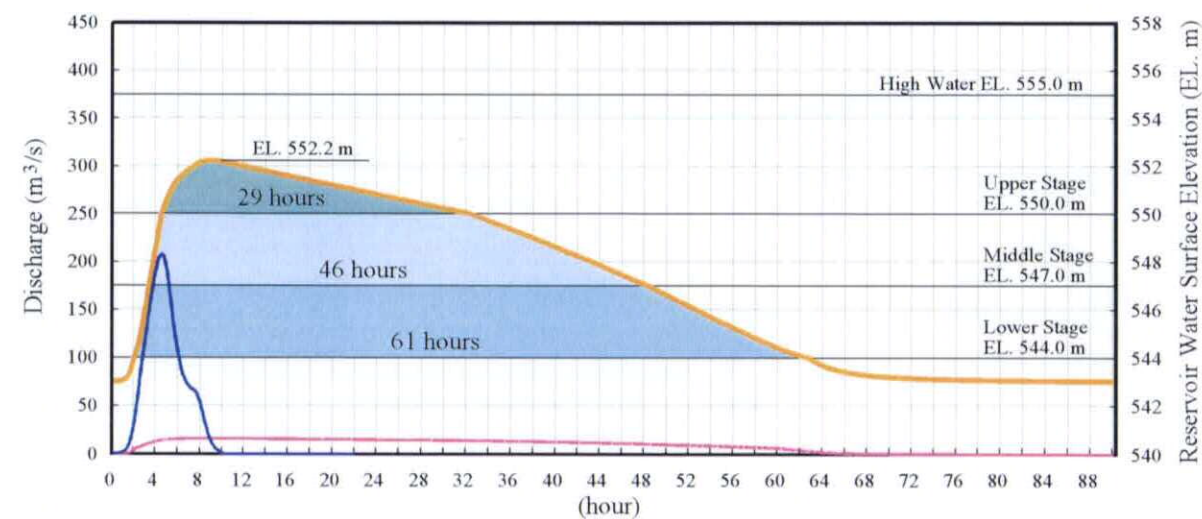


Muximum Inundation Area during Flood

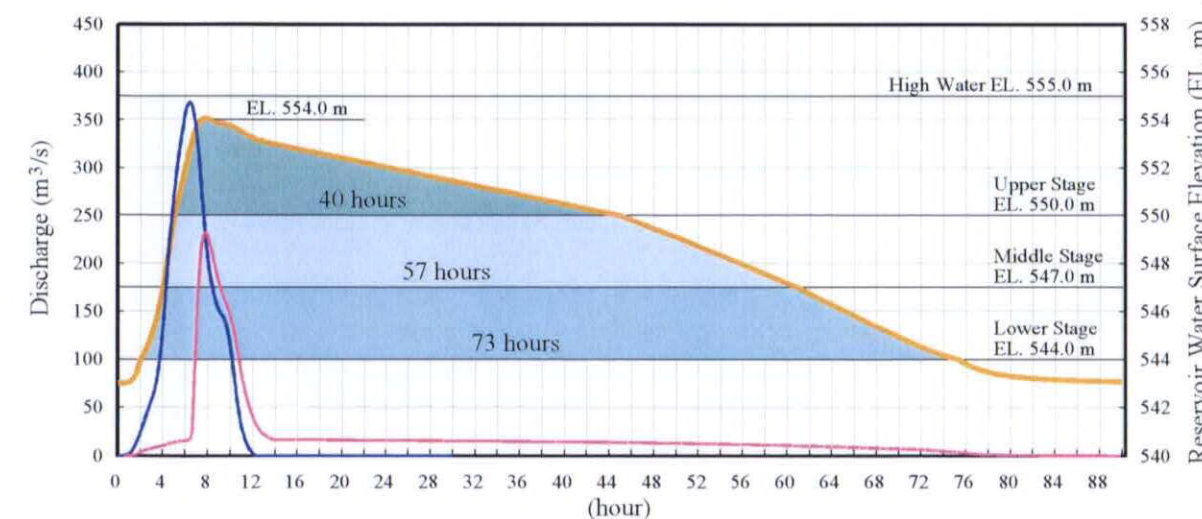
Flooding (100-year Return Period)



Muximum Inundation Area during Flood



Duration of Inundation



Duration of Inundation

THE STUDY ON COMPREHENSIVE FLOOD MITIGATION
AND ENVIRONMENTAL IMPROVEMENT PLAN
OF LAI NULLAH BASIN
IN THE ISLAMIC REPUBLIC OF PAKISTAN
JAPAN INTERNATIONAL COOPERATION AGENCY

Fig. C.19
Inundation of Community Pond
(during 25-year and 100-year Return Period)