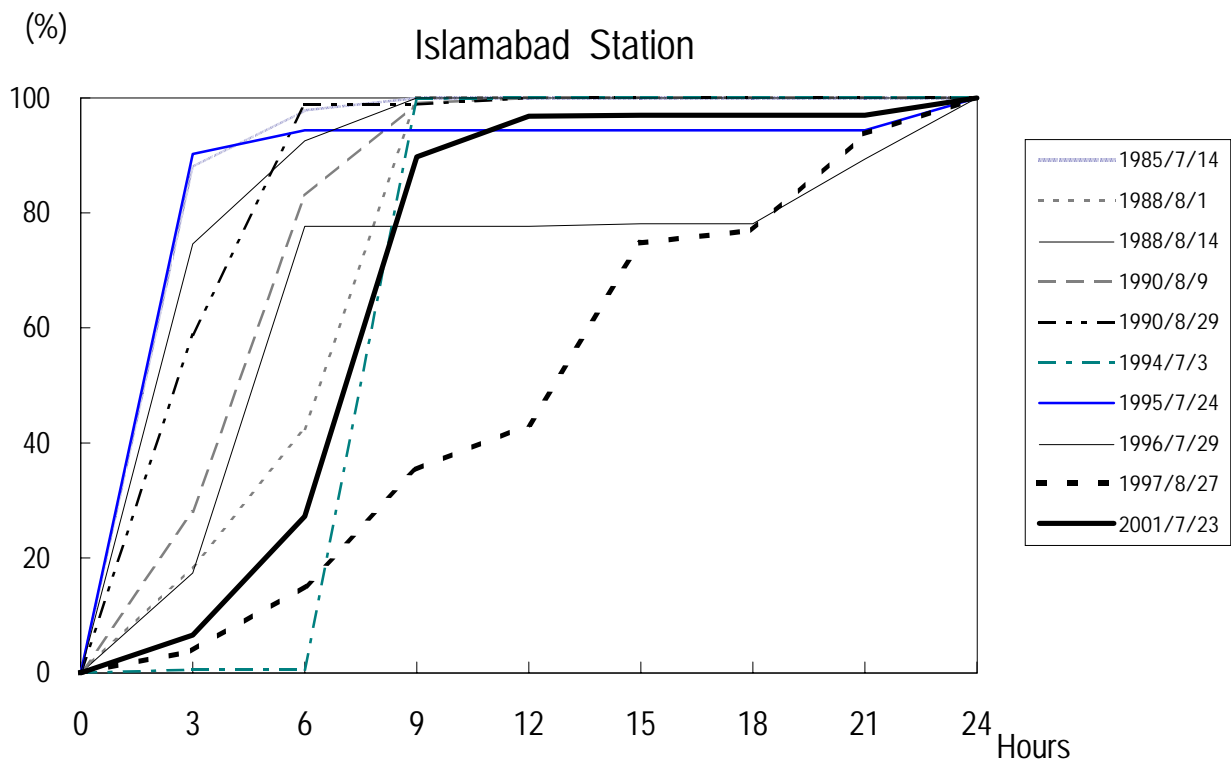
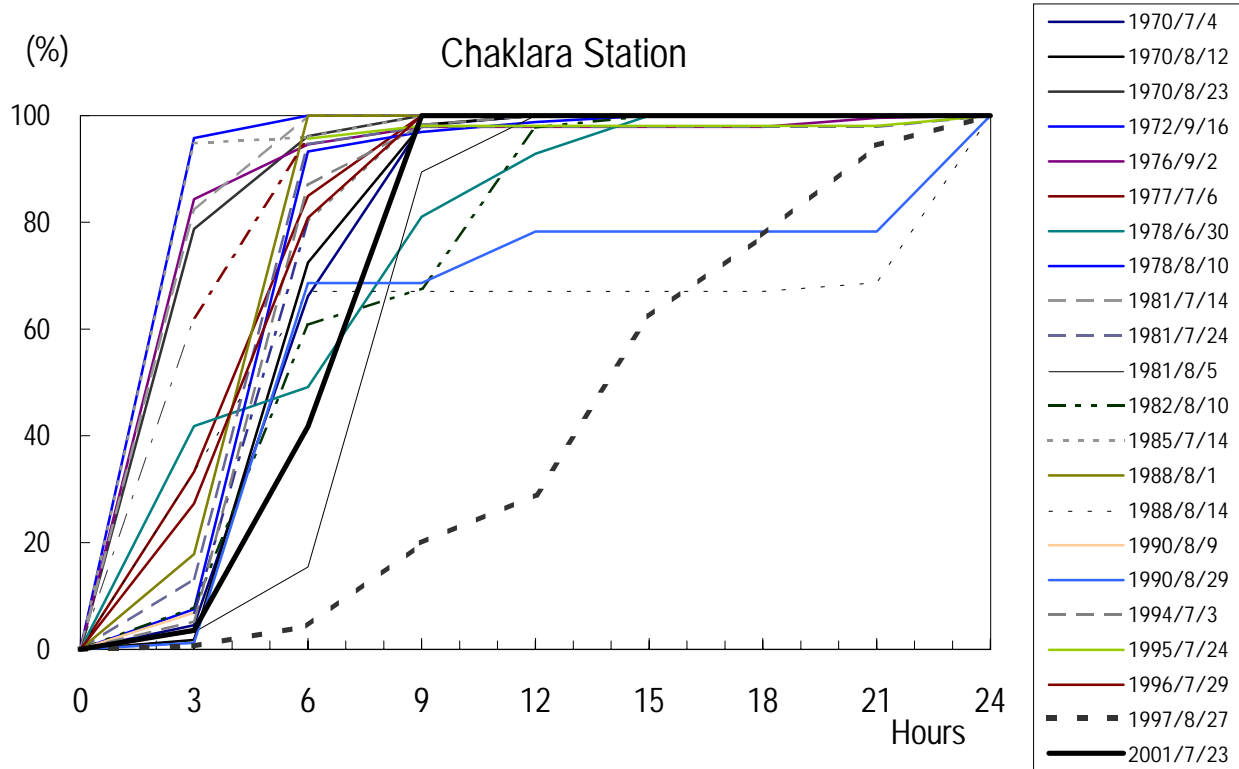


THE STUDY ON COMPREHENSIVE FLOOD MITIGATION
AND ENVIRONMENTAL IMPROVEMENT PLAN
OF LAI NULLAH BASIN
IN THE ISLAMIC REPUBLIC OF PAKISTAN
JAPAN INTERNATIONAL COOPERATION AGENCY

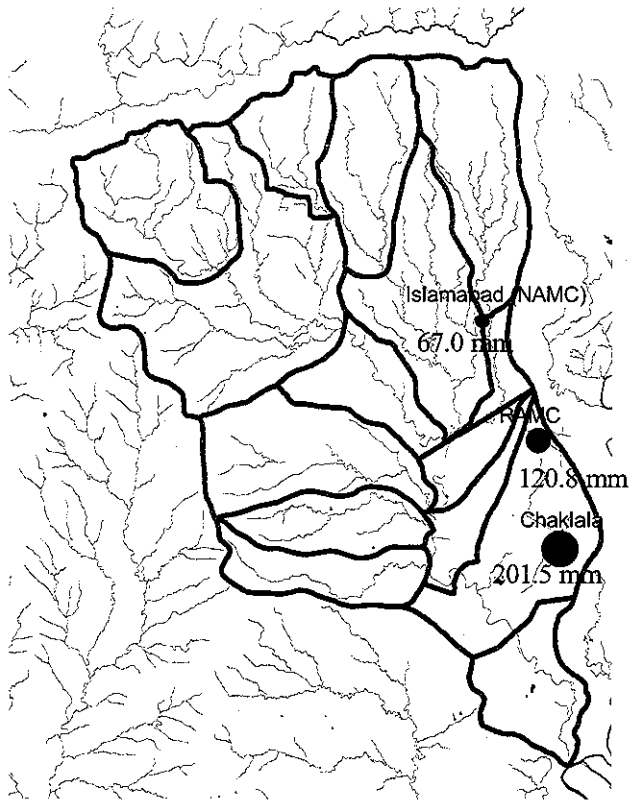
Fig. A.4
Sub-basin Division of Lai Nullah Basin and
Location of Rain Gauges



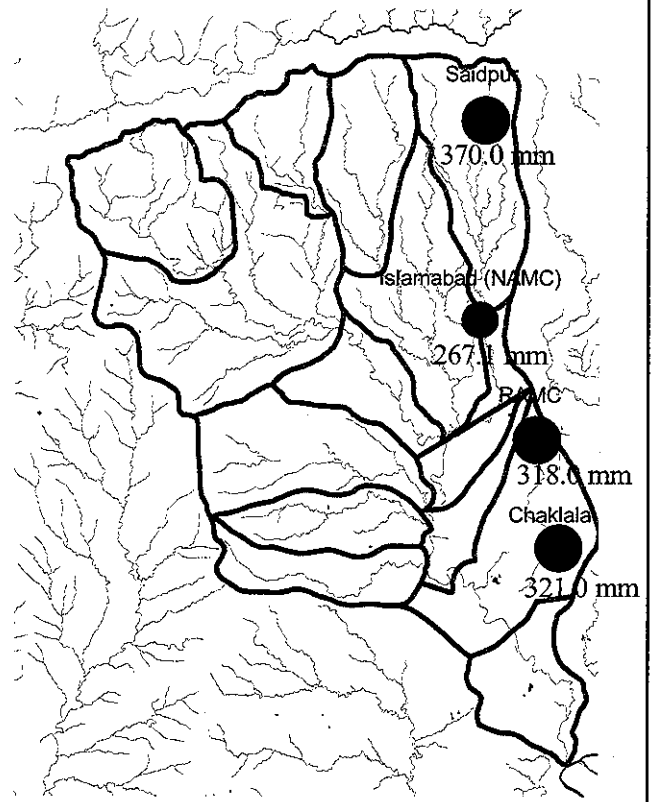
THE STUDY ON COMPREHENSIVE FLOOD MITIGATION
AND ENVIRONMENTAL IMPROVEMENT PLAN
OF LAI NULLAH BASIN
IN THE ISLAMIC REPUBLIC OF PAKISTAN

JAPAN INTERNATIONAL COOPERATION AGENCY

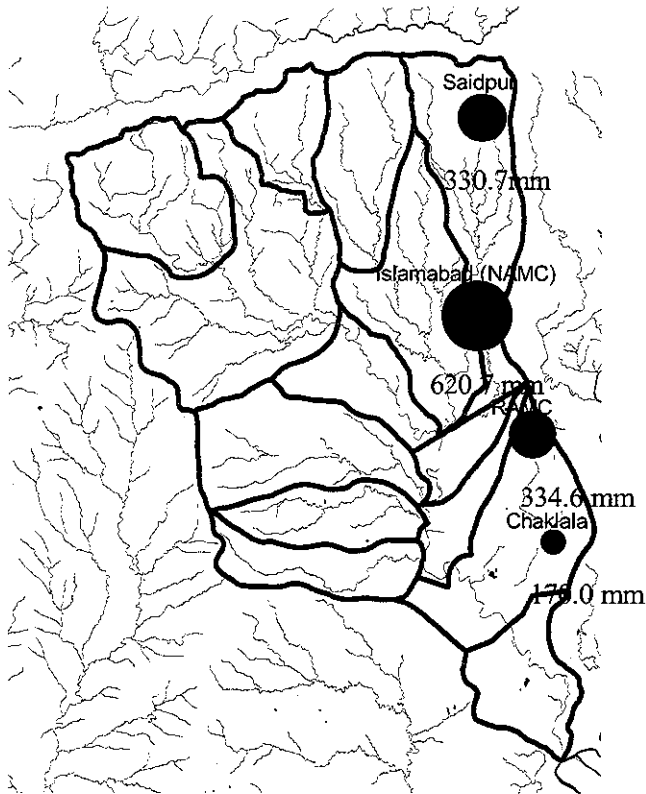
Fig. A.5
Accumulative Rainfall Curve of Chaklara and
Islamabad Stations



(a) 1996/7/29 Flood

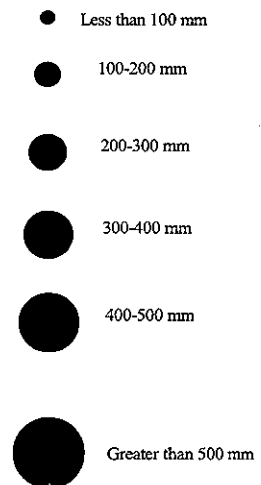


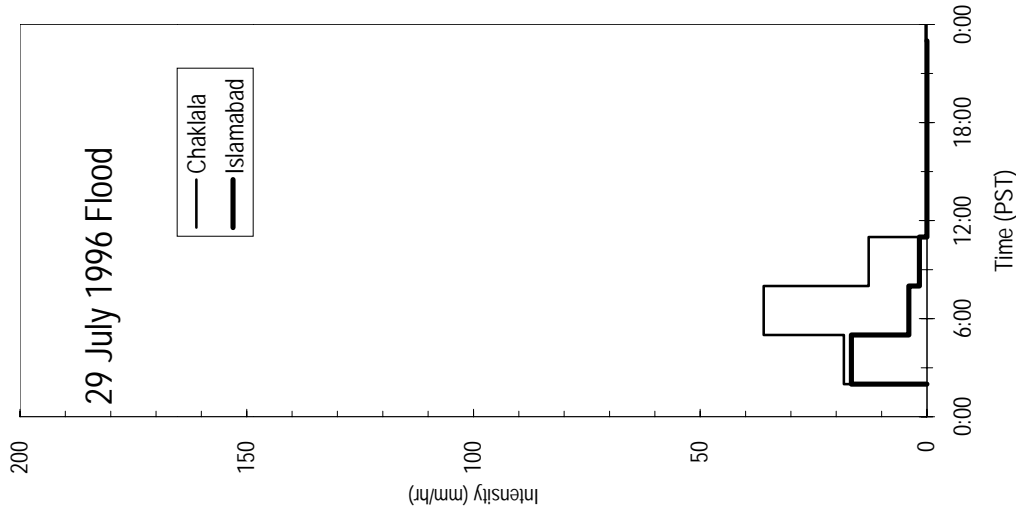
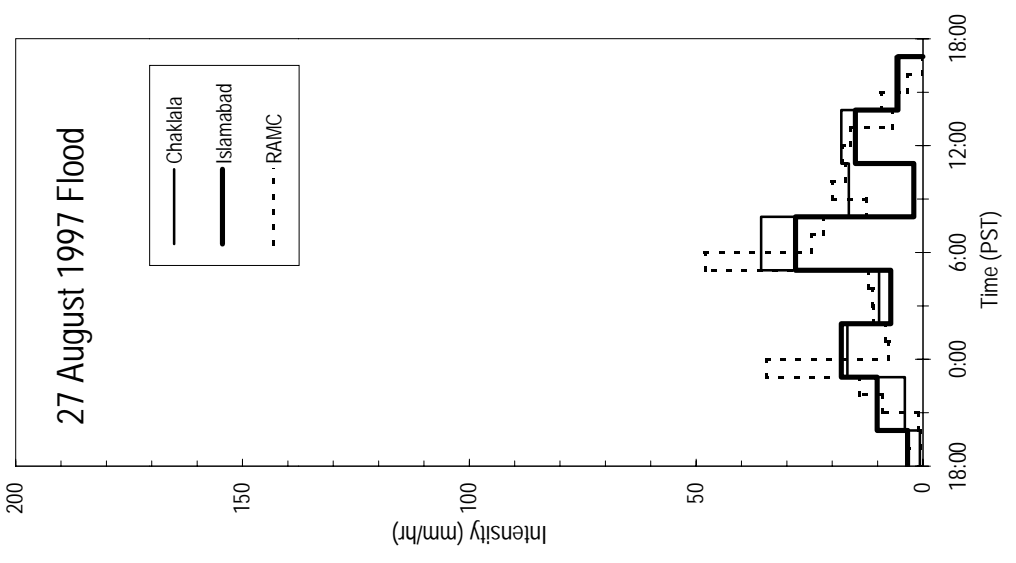
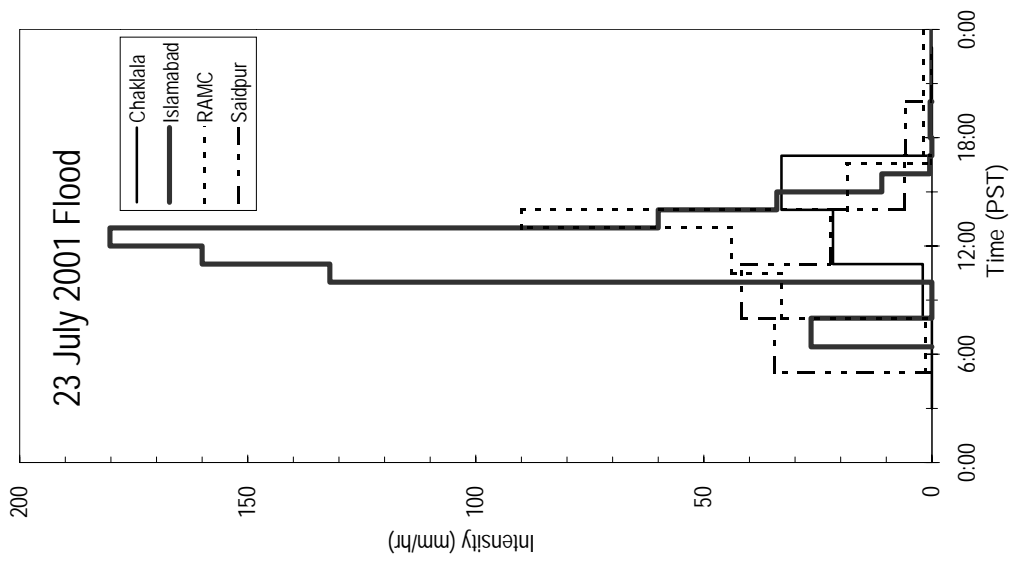
(b) 1997/8/27 Flood



(c) 2001/7/23 Flood

Total Rainfall

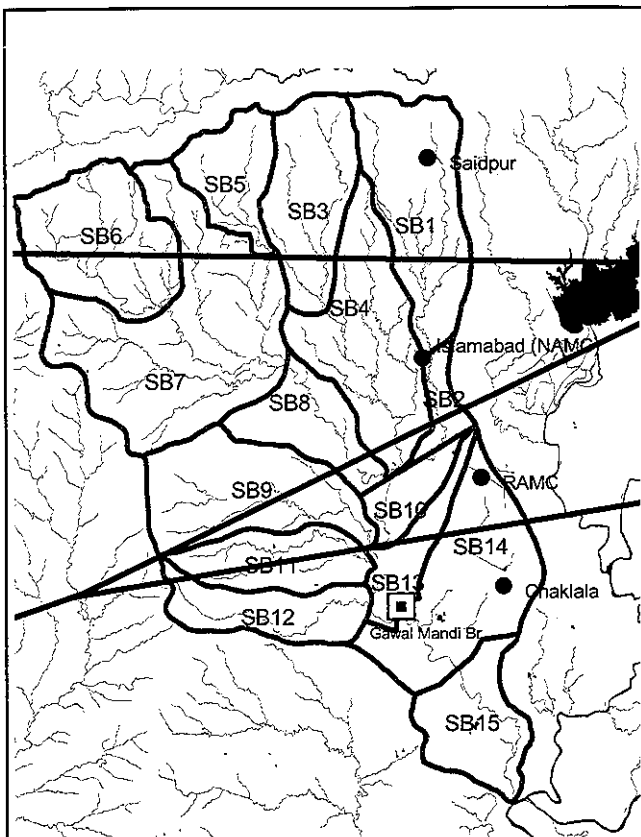




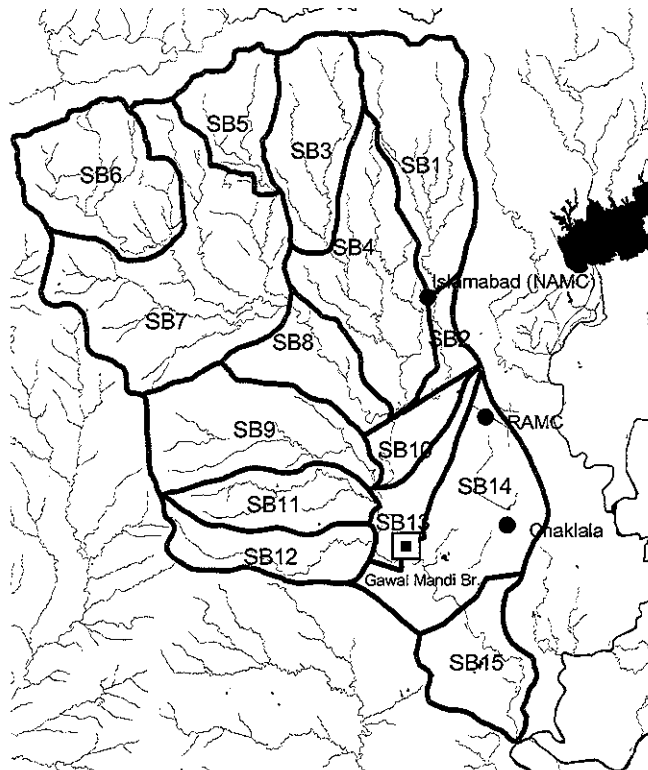
THE STUDY ON COMPREHENSIVE FLOOD
MITIGATION
AND ENVIRONMENT IMPROVEMENT PLAN
OF LAI NULLAH BASIN

JAPAN INTERNATIONAL COOPERATION AGENCY

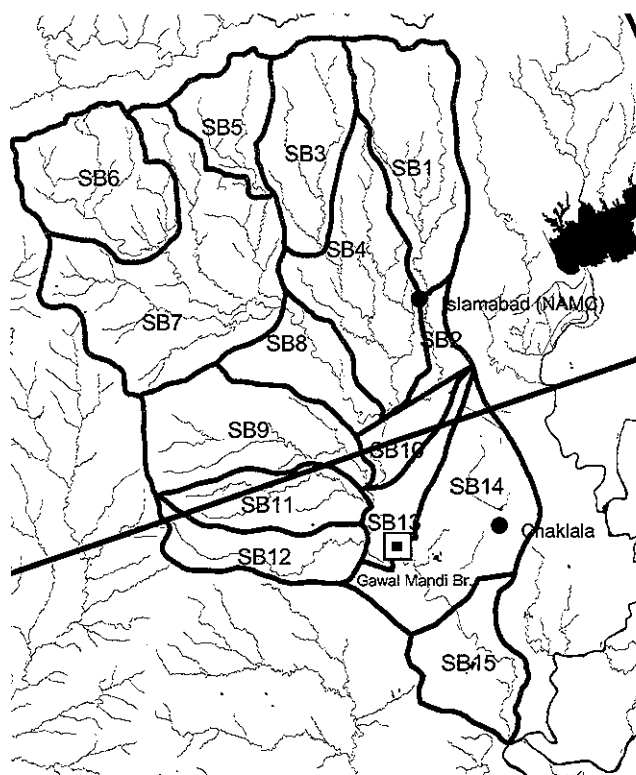
Fig. A.7
Hyetographs during Recent Three Floods



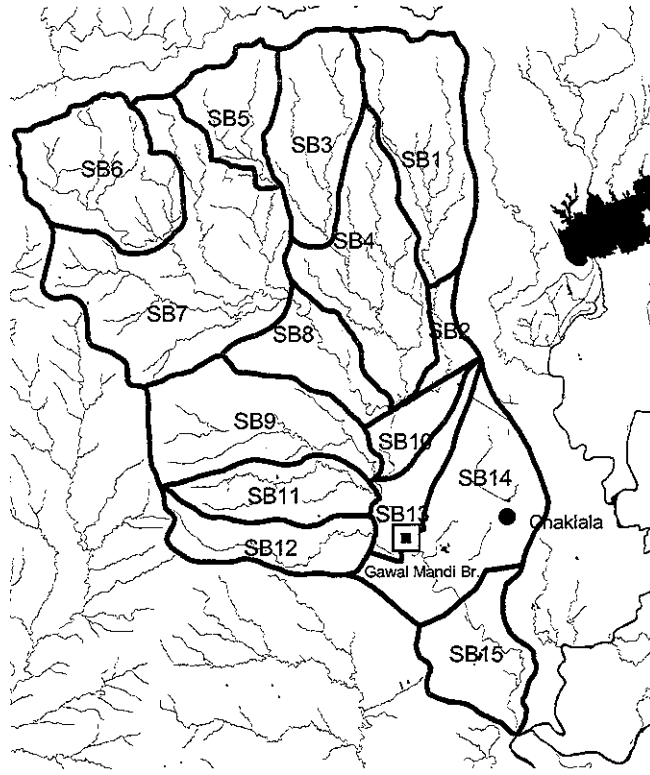
(a) 4 Rain Gauges



(b) 3 Rain Gauges



(c) 2 Rain Gauges

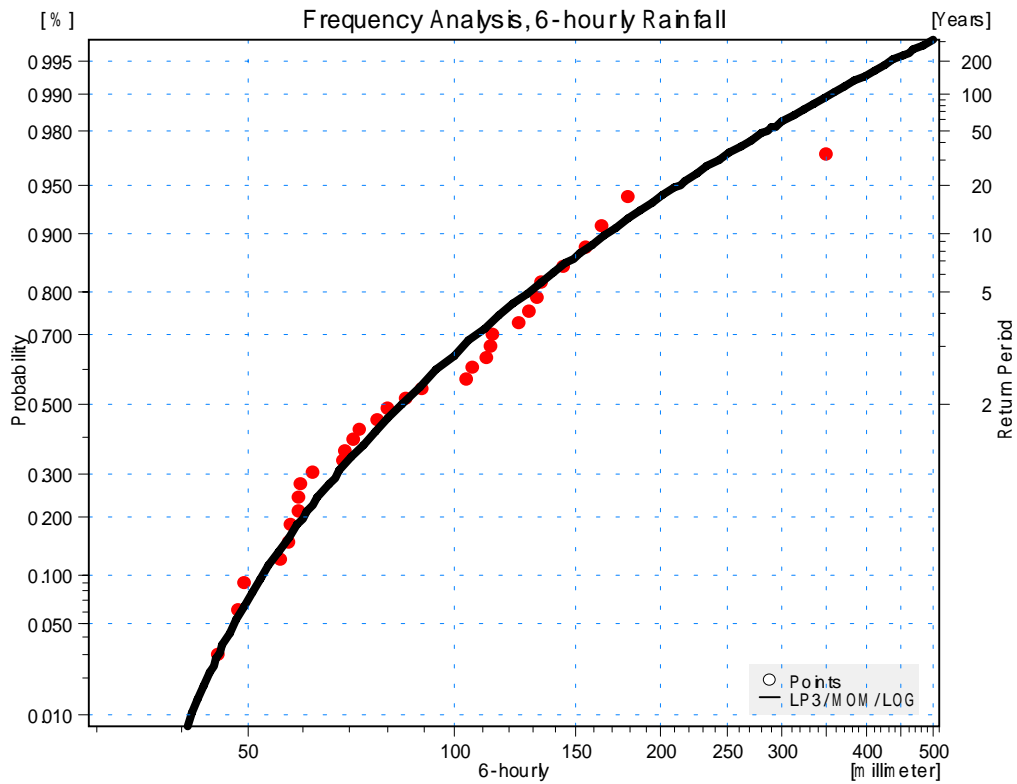
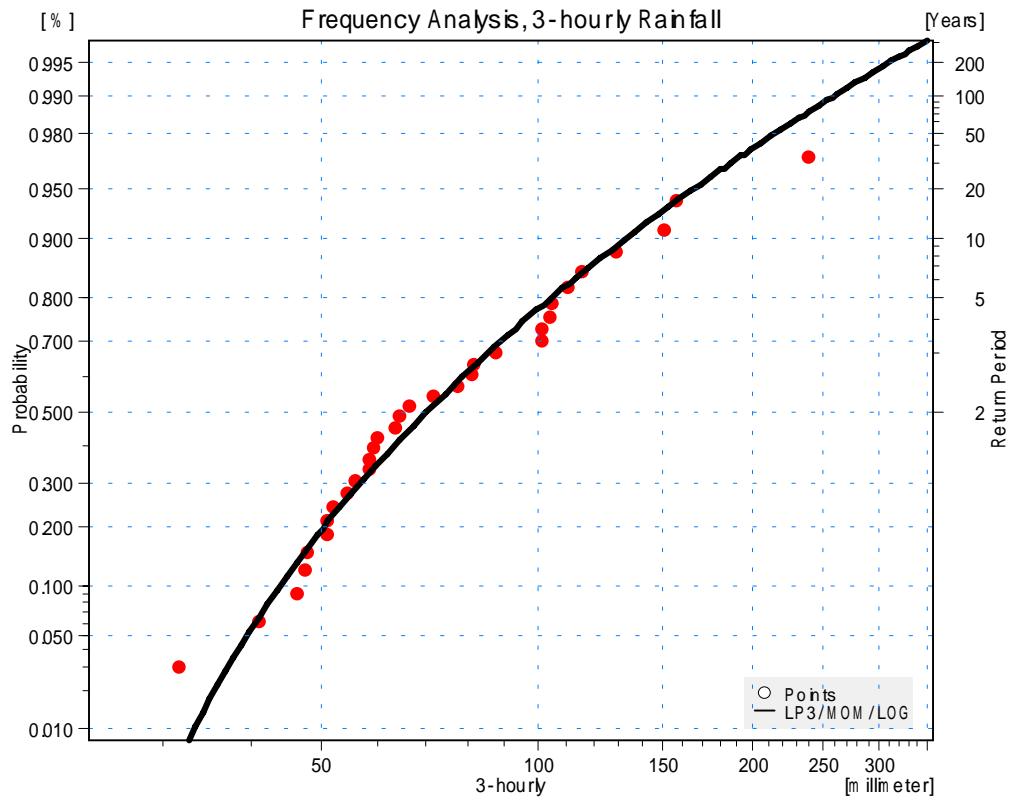


(d) 1 Rain Gauge

THE STUDY ON COMPREHENSIVE FLOOD MITIGATION
AND ENVIRONMENTAL IMPROVEMENT PLAN
OF LAI NULLAH BASIN
IN THE ISLAMIC REPUBLIC OF PAKISTAN

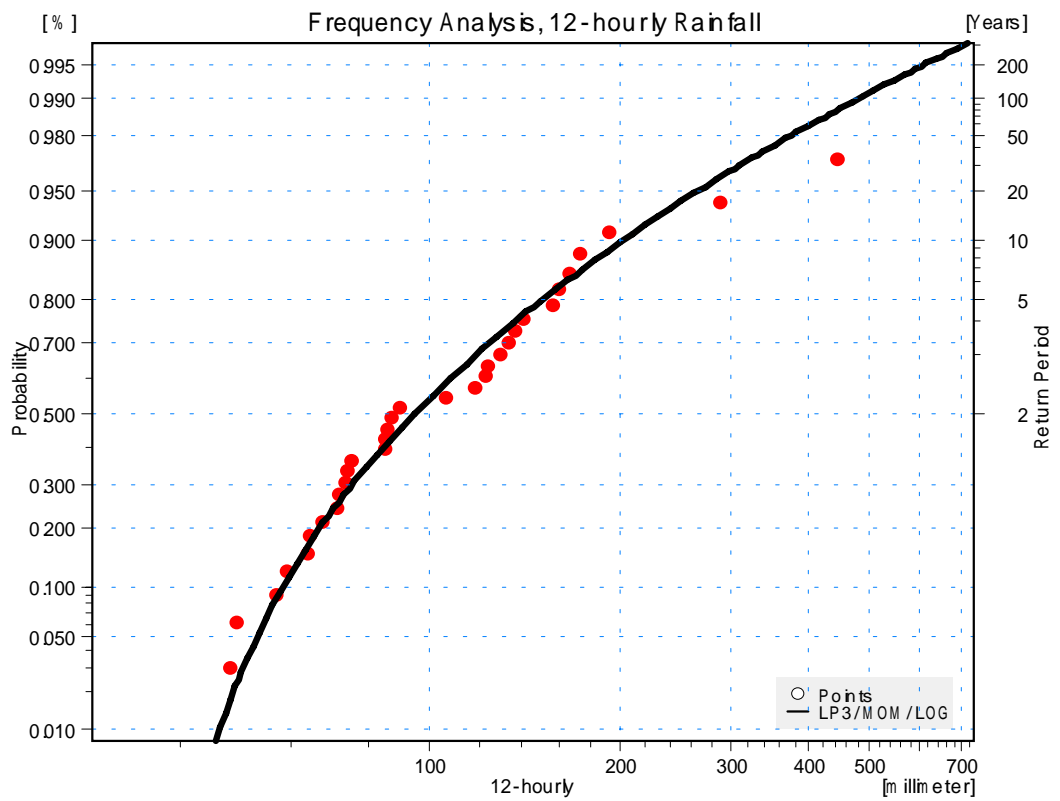
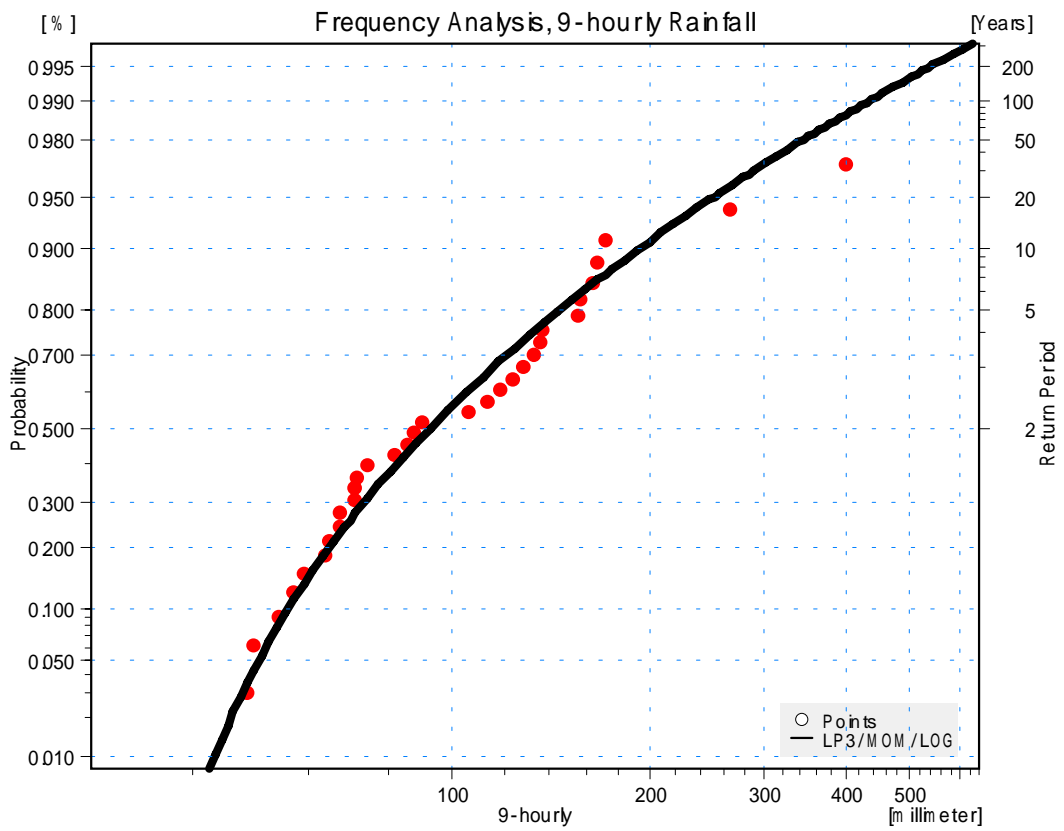
JAPAN INTERNATIONAL COOPERATION AGENCY

Fig. A.8
Thiessen Polygon Division of Lai Nullah Basin



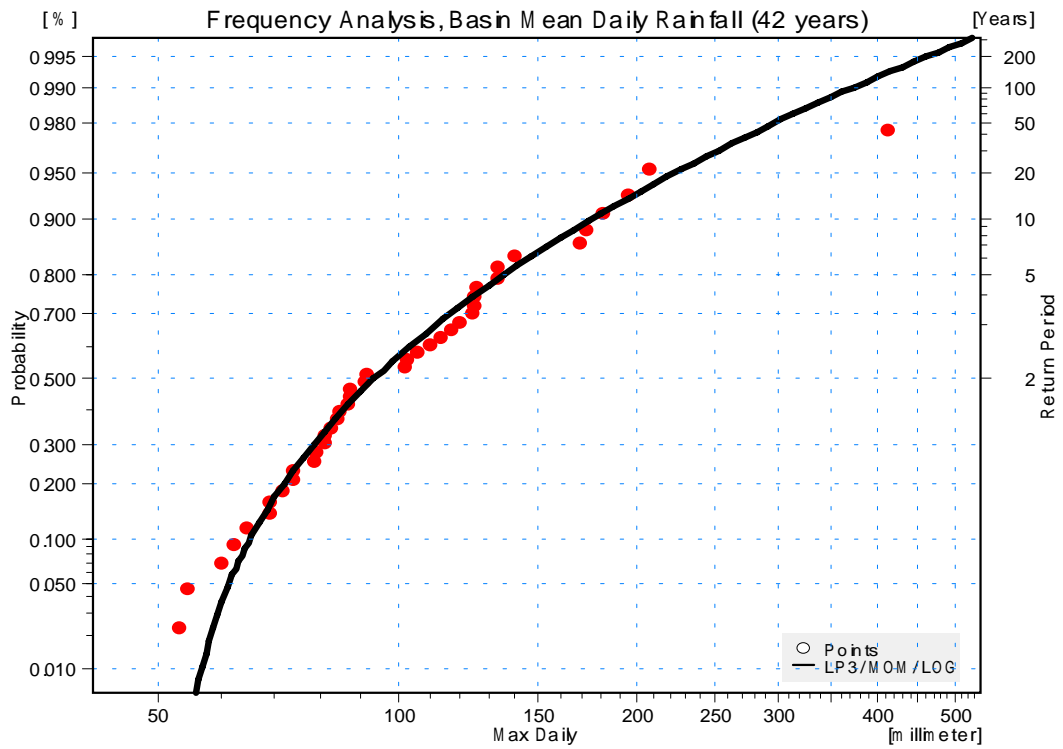
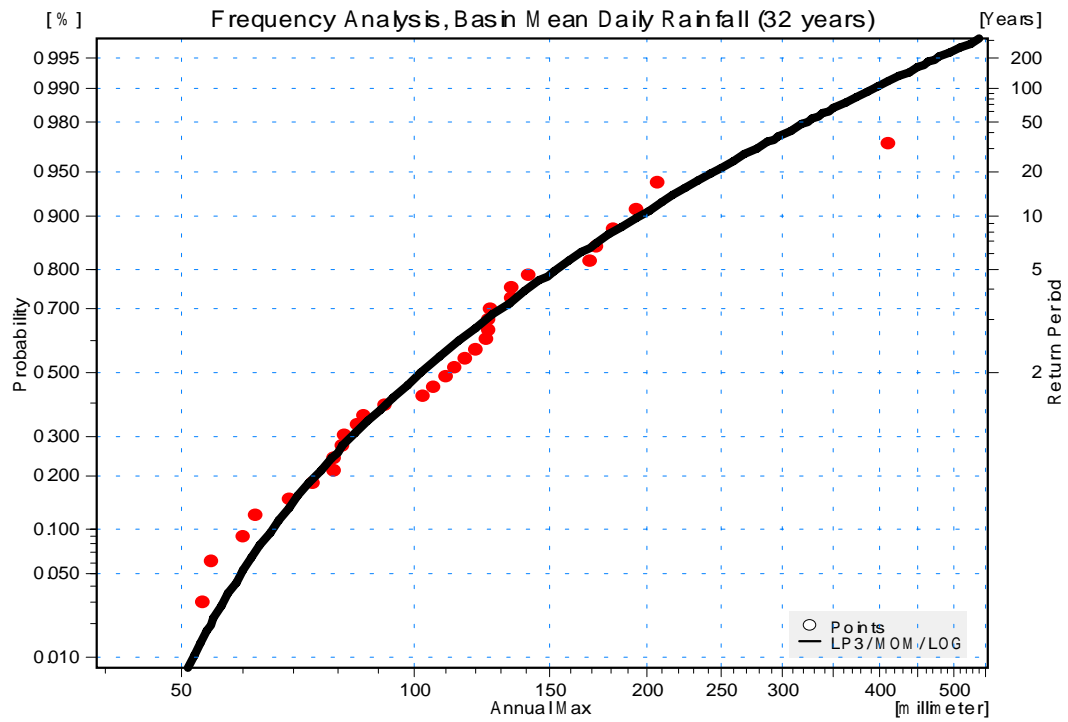
THE STUDY ON COMPREHENSIVE FLOOD MITIGATION
AND ENVIRONMENTAL IMPROVEMENT PLAN
OF LAI NULLAH BASIN
IN THE ISLAMIC REPUBLIC OF PAKISTAN
JAPAN INTERNATIONAL COOPERATION AGENCY

Fig. A.9 (1/2)
Probability Plotting of Rainfall
(3-hourly and 6-hourly Rainfalls)



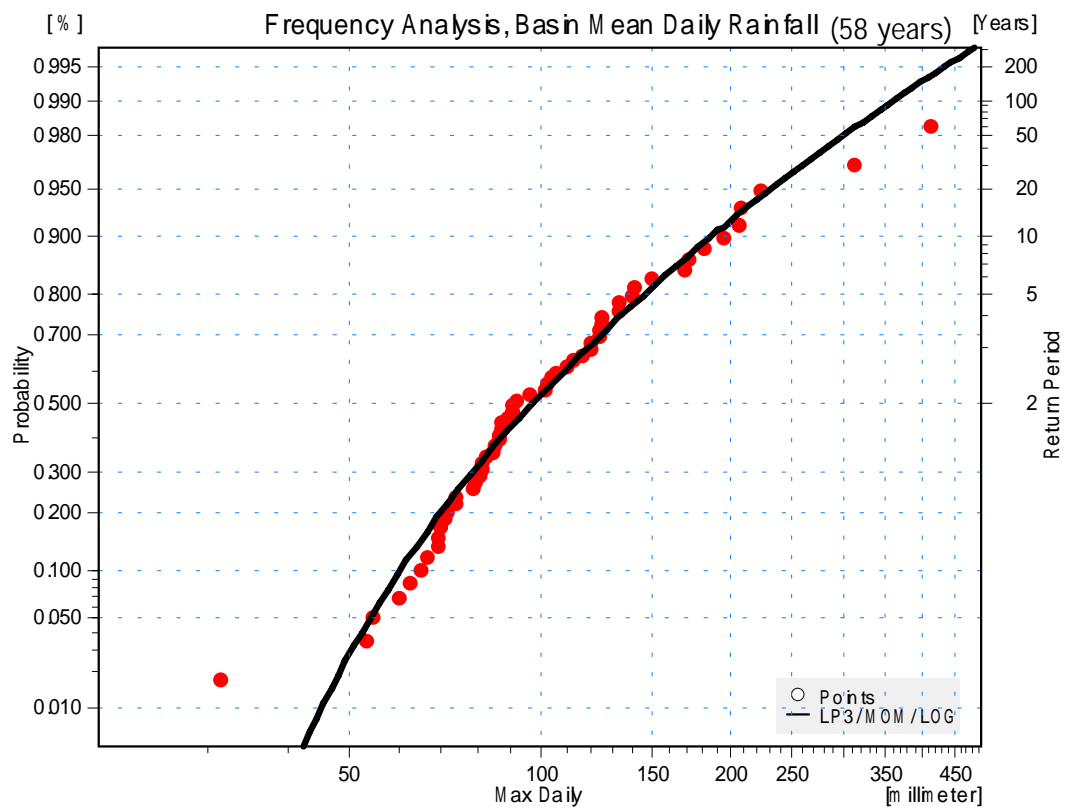
THE STUDY ON COMPREHENSIVE FLOOD MITIGATION
AND ENVIRONMENTAL IMPROVEMENT PLAN
OF LAI NULLAH BASIN
IN THE ISLAMIC REPUBLIC OF PAKISTAN
JAPAN INTERNATIONAL COOPERATION AGENCY

Fig. A.9 (2/2)
Probability Plotting of Rainfall
(9-hourly and 12-hourly Rainfalls)



THE STUDY ON COMPREHENSIVE FLOOD MITIGATION
AND ENVIRONMENTAL IMPROVEMENT PLAN
OF LAI NULLAH BASIN
IN THE ISLAMIC REPUBLIC OF PAKISTAN
JAPAN INTERNATIONAL COOPERATION AGENCY

Fig. A.10 (1/2)
Probability Plotting of Basin Mean Daily
Rainfall (32 years (1970 to 2001) and
42 years (1960 to 2001))

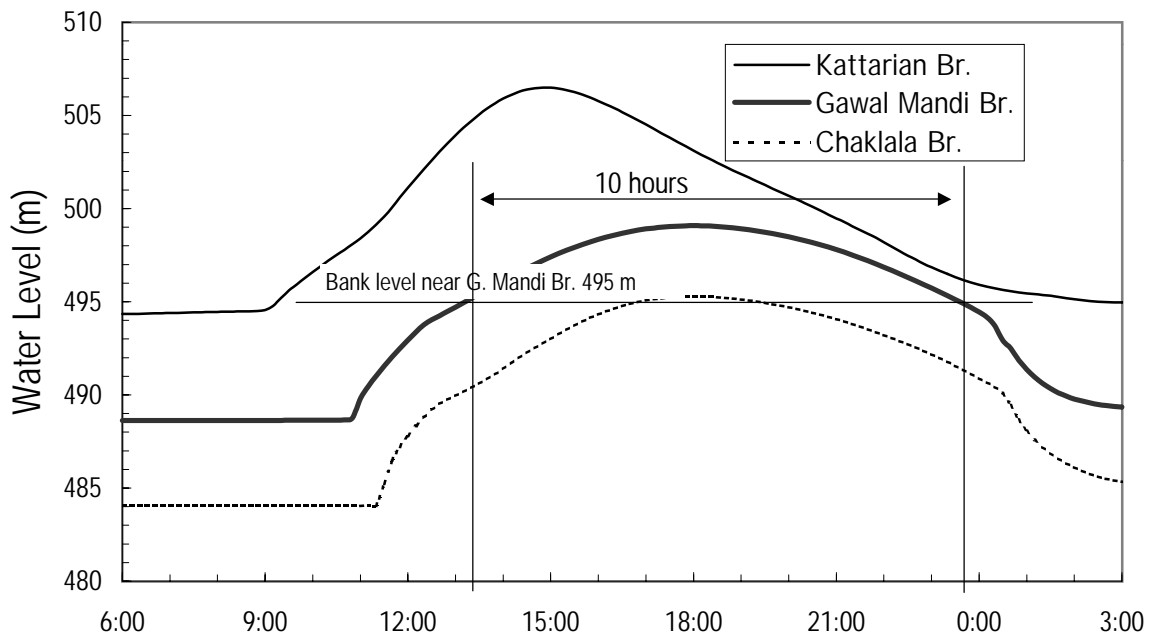


THE STUDY ON COMPREHENSIVE FLOOD MITIGATION
AND ENVIRONMENTAL IMPROVEMENT PLAN
OF LAI NULLAH BASIN
IN THE ISLAMIC REPUBLIC OF PAKISTAN

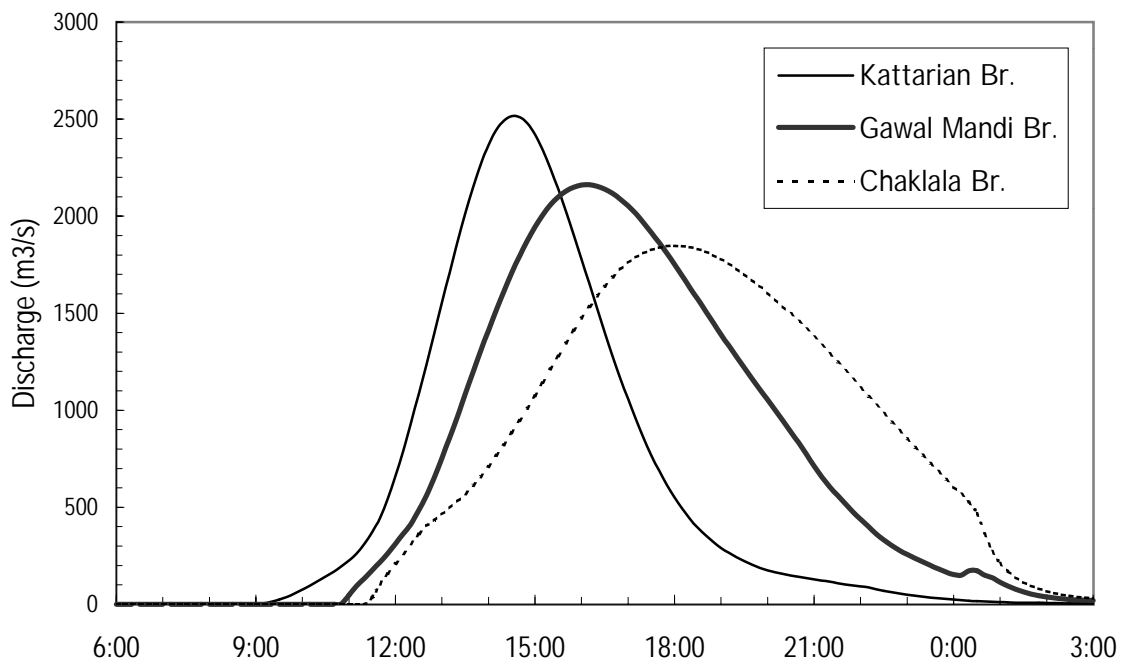
JAPAN INTERNATIONAL COOPERATION AGENCY

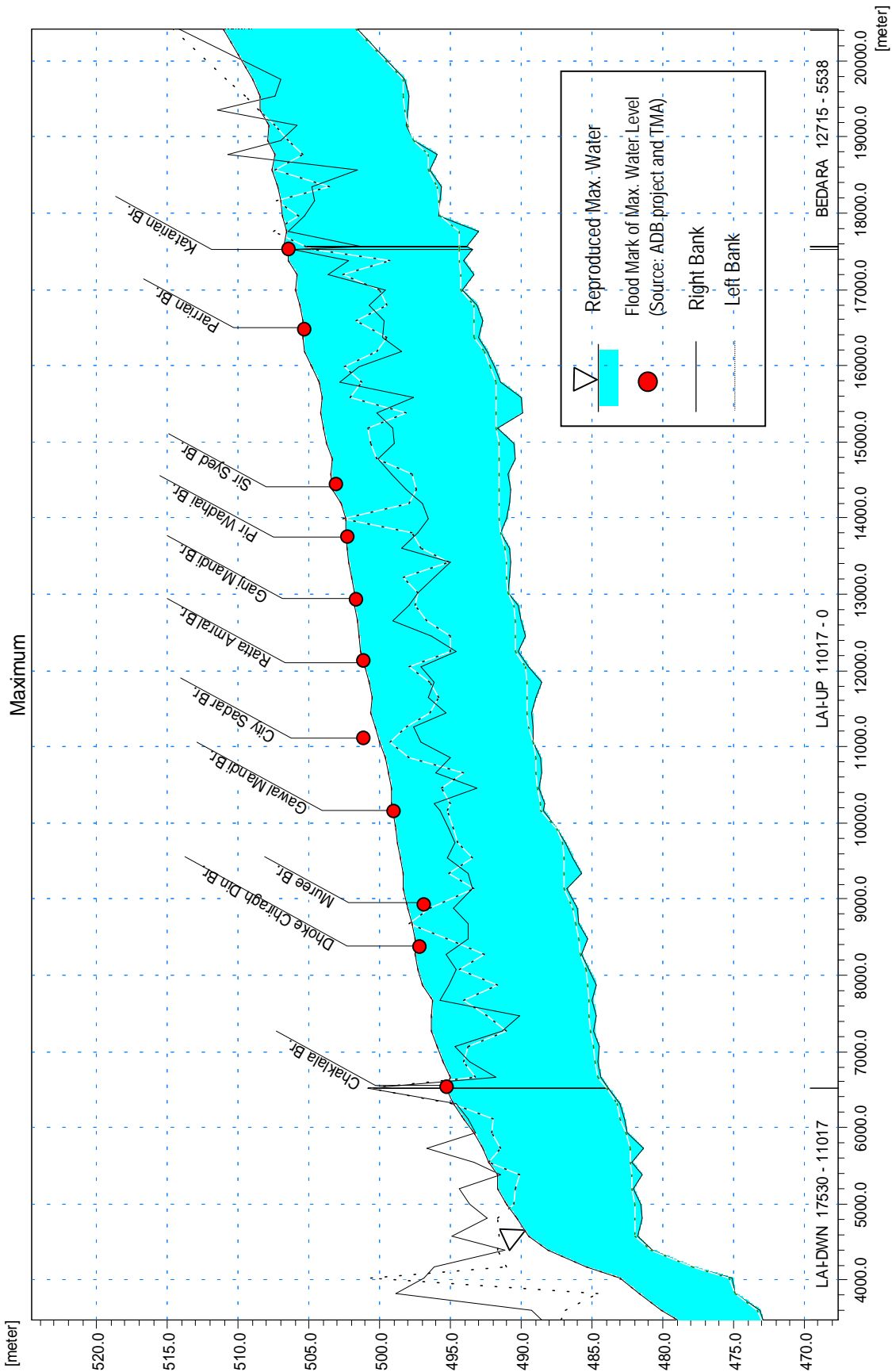
Fig. A.10 (2/2)
Probability Plotting of Basin Mean Daily
Rainfall (53 years (1944 to 2001))

Water Level Hydrograph (2001/7/23)



Discharge Hydrograph (2001/7/23)



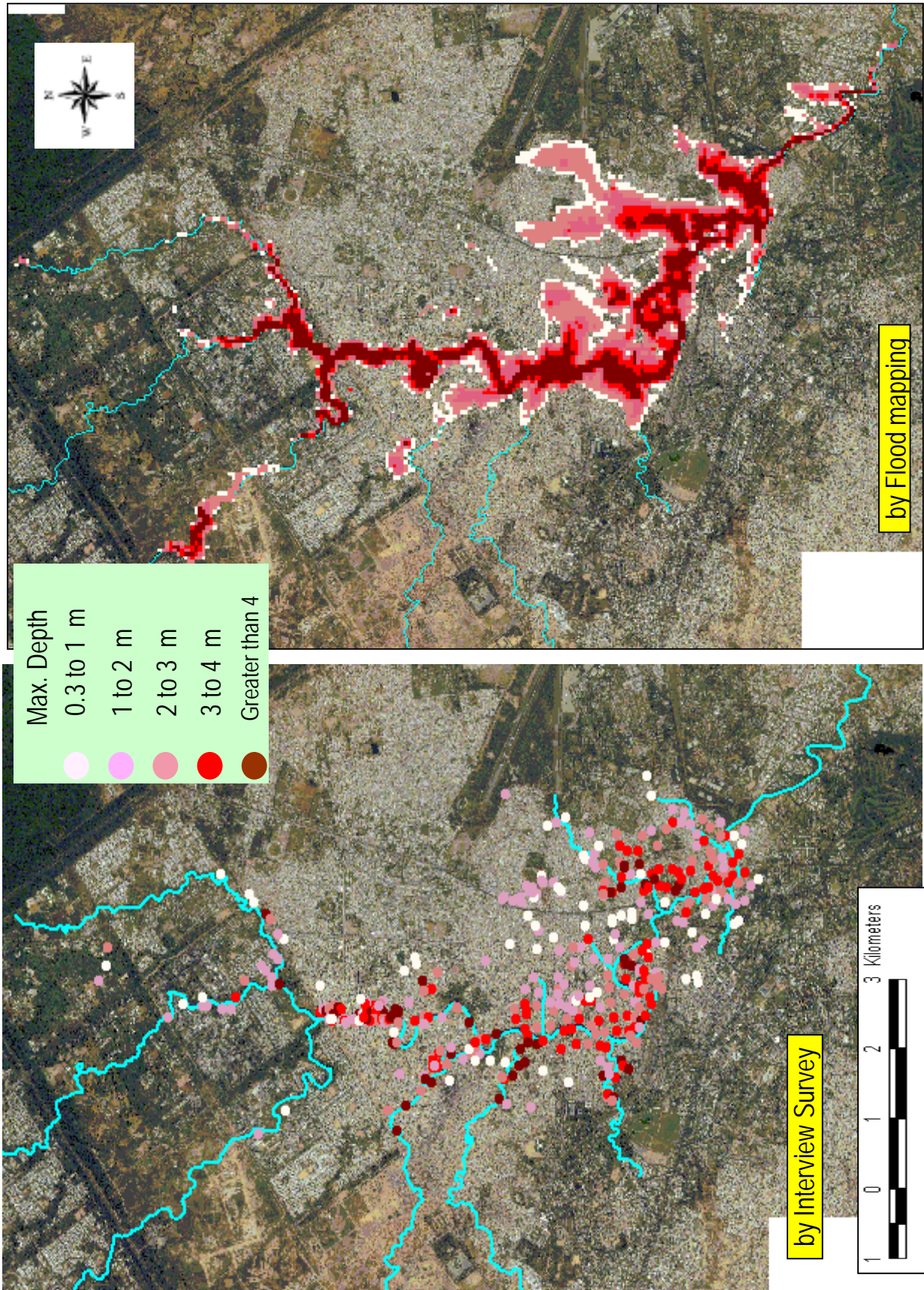


THE STUDY ON COMPREHENSIVE FLOOD MITIGATION
AND ENVIRONMENT IMPROVEMENT PLAN
OF LAI NULLAH BASIN
IN THE ISLAMIC REPUBLIC OF PAKISTAN

JAPAN INTERNATIONAL COOPERATION AGENCY

Fig. A.12

Comparison of Reproduced and Observed
Maximum Water Levels during 2001 Flood



THE STUDY ON COMPREHENSIVE FLOOD MITIGATION
AND ENVIRONMENT IMPROVEMENT PLAN
OF LAI NULLAH BASIN
IN THE ISLAMIC REPUBLIC OF PAKISTAN

JAPAN INTERNATIONAL COOPERATION AGENCY

Fig. A.13

Comparison of Generated Flood Map
and Interview Survey Results

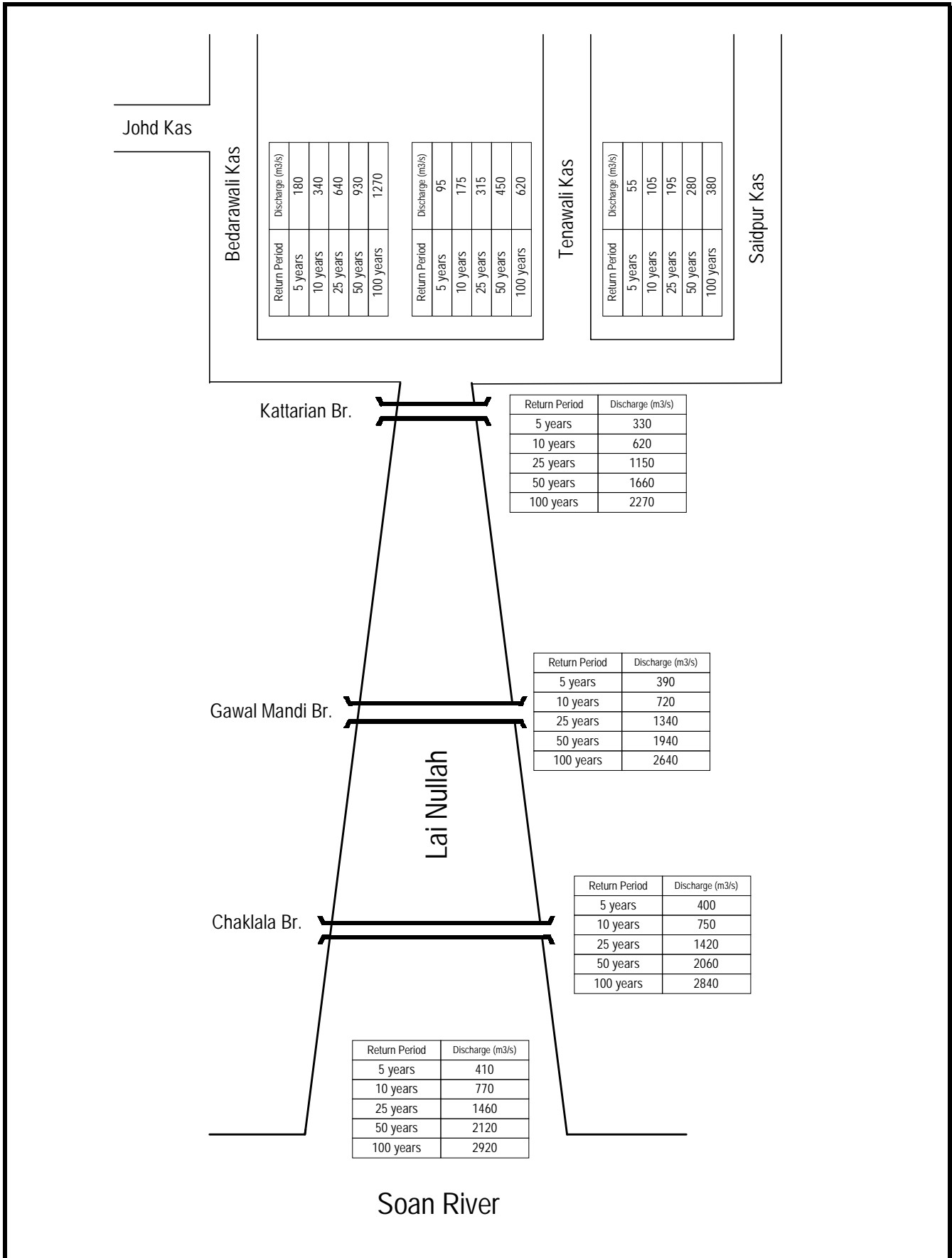


Fig. A.14
 Maximum Discharge Distribution under Without-Project Condition