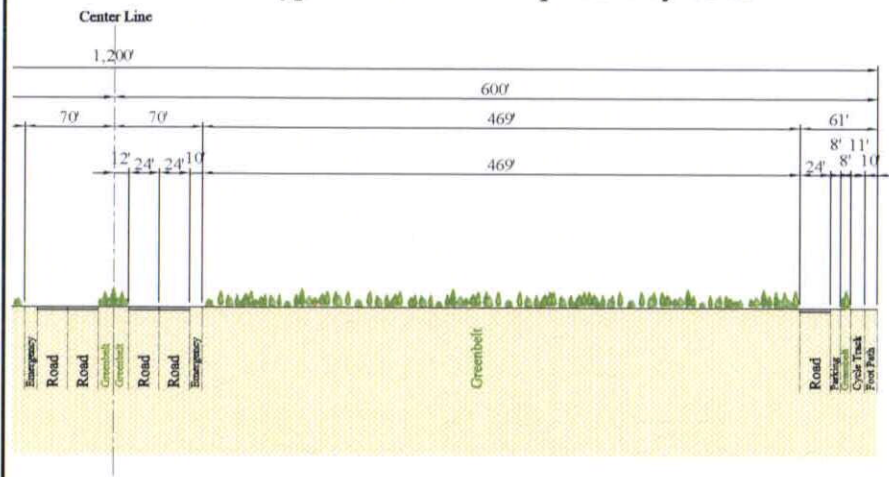


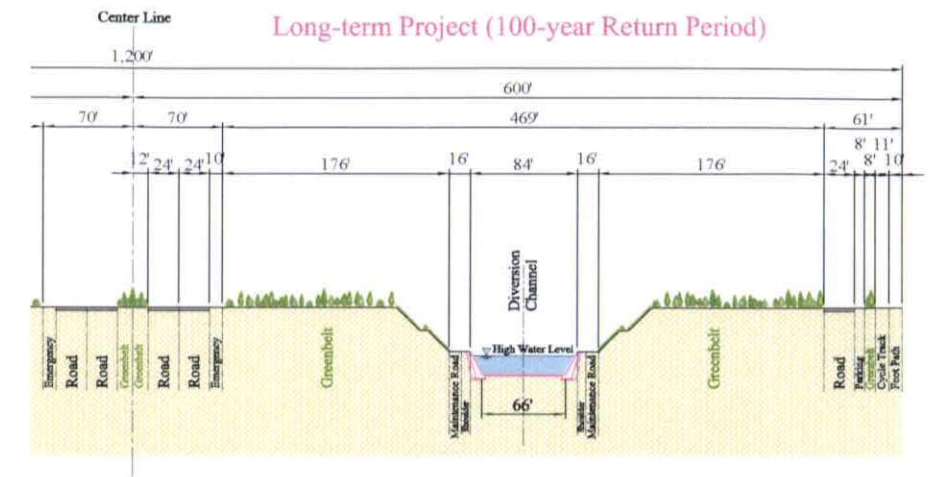
Section of Kasihimir Highway

Typical Cross Section planned by CDA



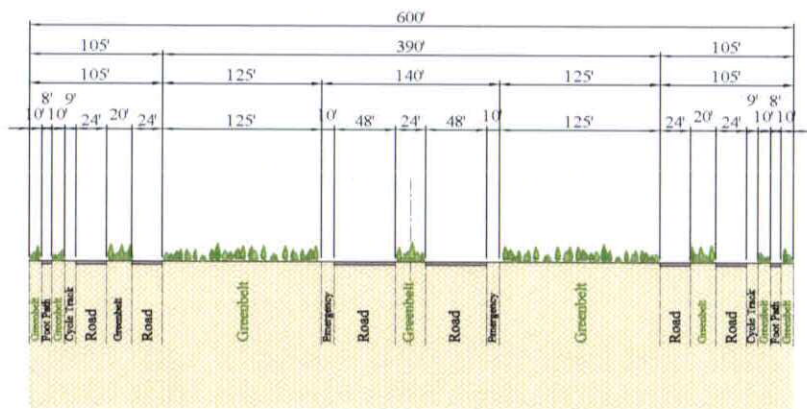
Section A - A

Flood Diversion Channel with Maintenance Road  
Long-term Project (100-year Return Period)



Section of Khayaban-E-Johar Road

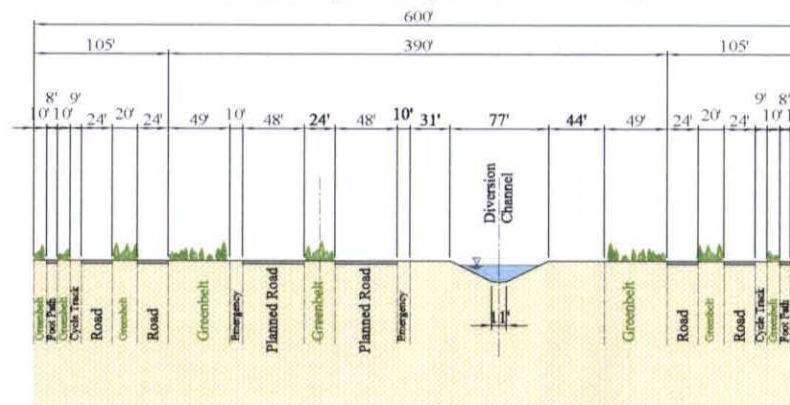
Typical Cross Section planned by CDA



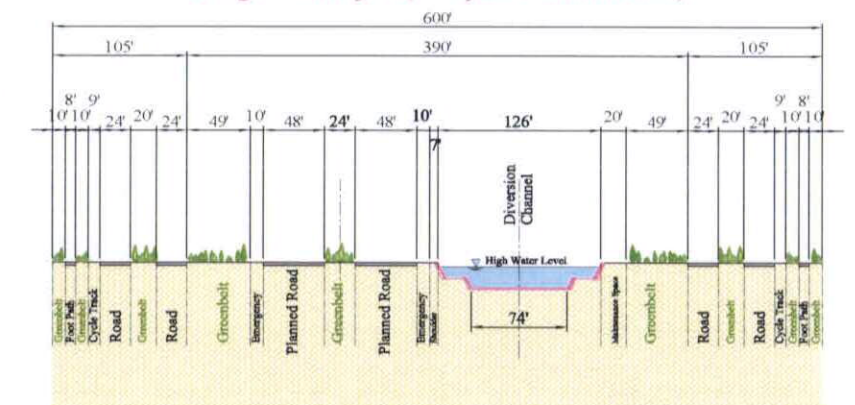
Section B - B

Flood Diversion Channel with Road planned by CDA

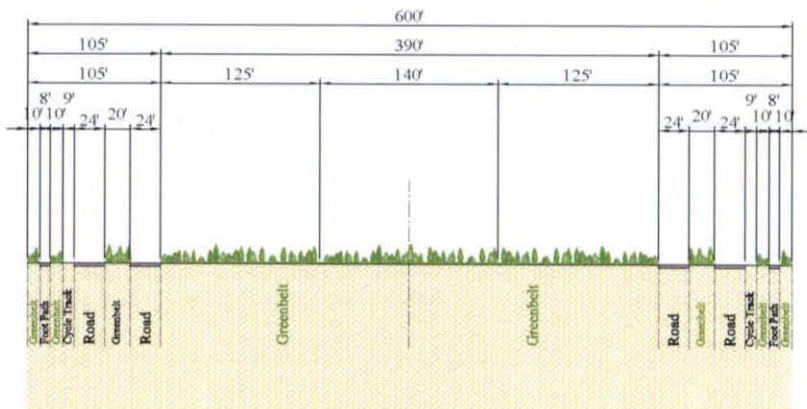
Short-term Project (25-year Return Period)



Long-term Project (100-year Return Period)



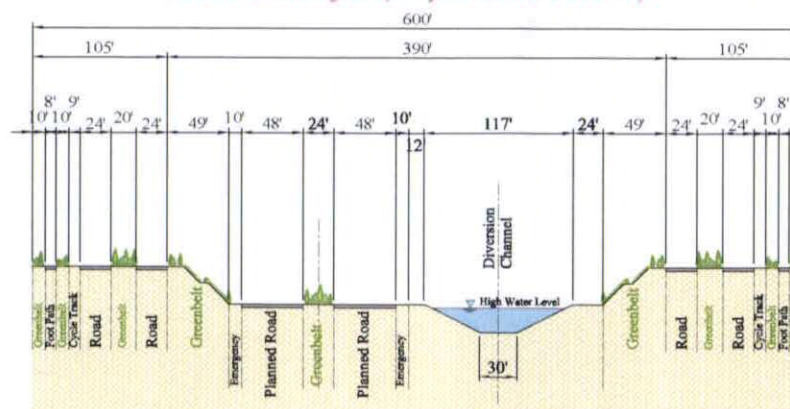
Existing Condition



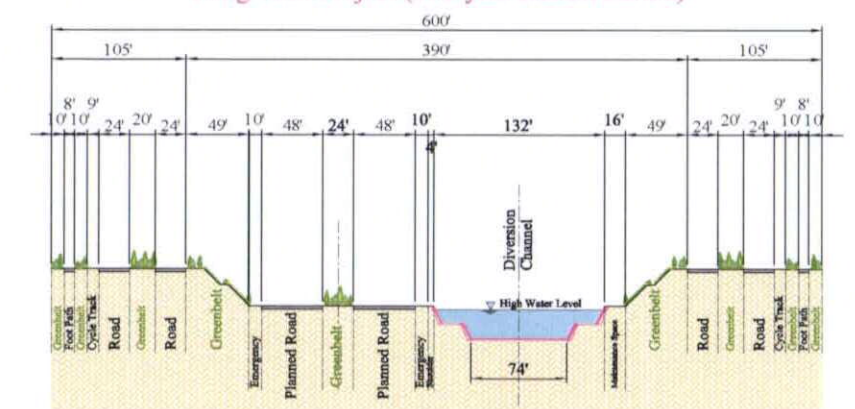
Section C - C

Flood Diversion Channel with Road planned by CDA

Short-term Project (25-year Return Period)

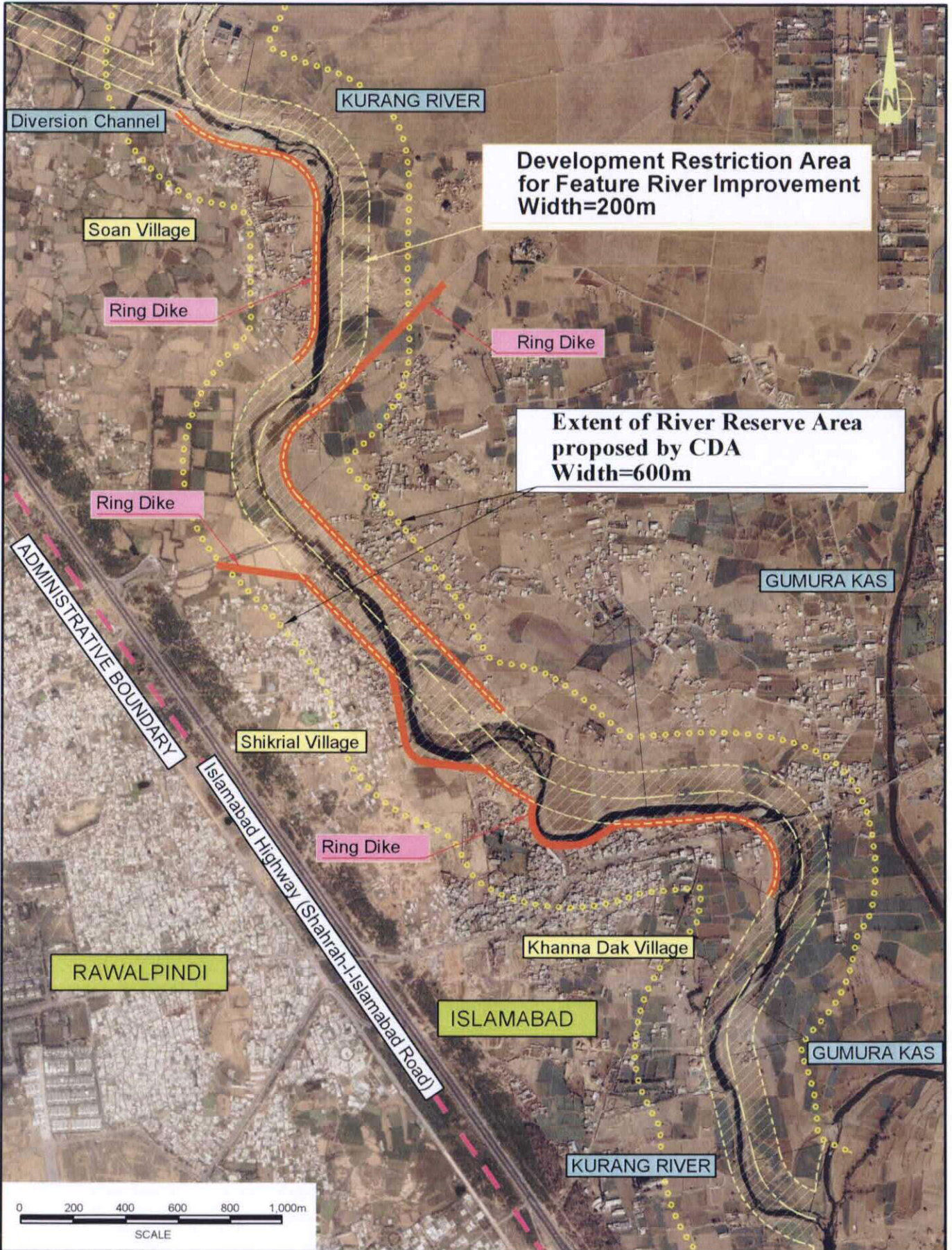


Long-term Project (100-year Return Period)



THE STUDY ON COMPREHENSIVE FLOOD MITIGATION  
AND ENVIRONMENTAL IMPROVEMENT PLAN  
OF LAI NULLAH BASIN  
IN THE ISLAMIC REPUBLIC OF PAKISTAN  
JAPAN INTERNATIONAL COOPERATION AGENCY

Fig. 6.2.25  
Cross Sectional Layout  
of Flood Diversion Channel



THE STUDY ON COMPREHENSIVE FLOOD MITIGATION  
AND ENVIRONMENTAL IMPROVEMENT PLAN  
OF LAI NULLAH BASIN  
IN THE ISLAMIC REPUBLIC OF PAKISTAN

JAPAN INTERNATIONAL COOPERATION AGENCY

Fig. 6.2.26

Ring Dike and River Reserve Area  
along Kurang River