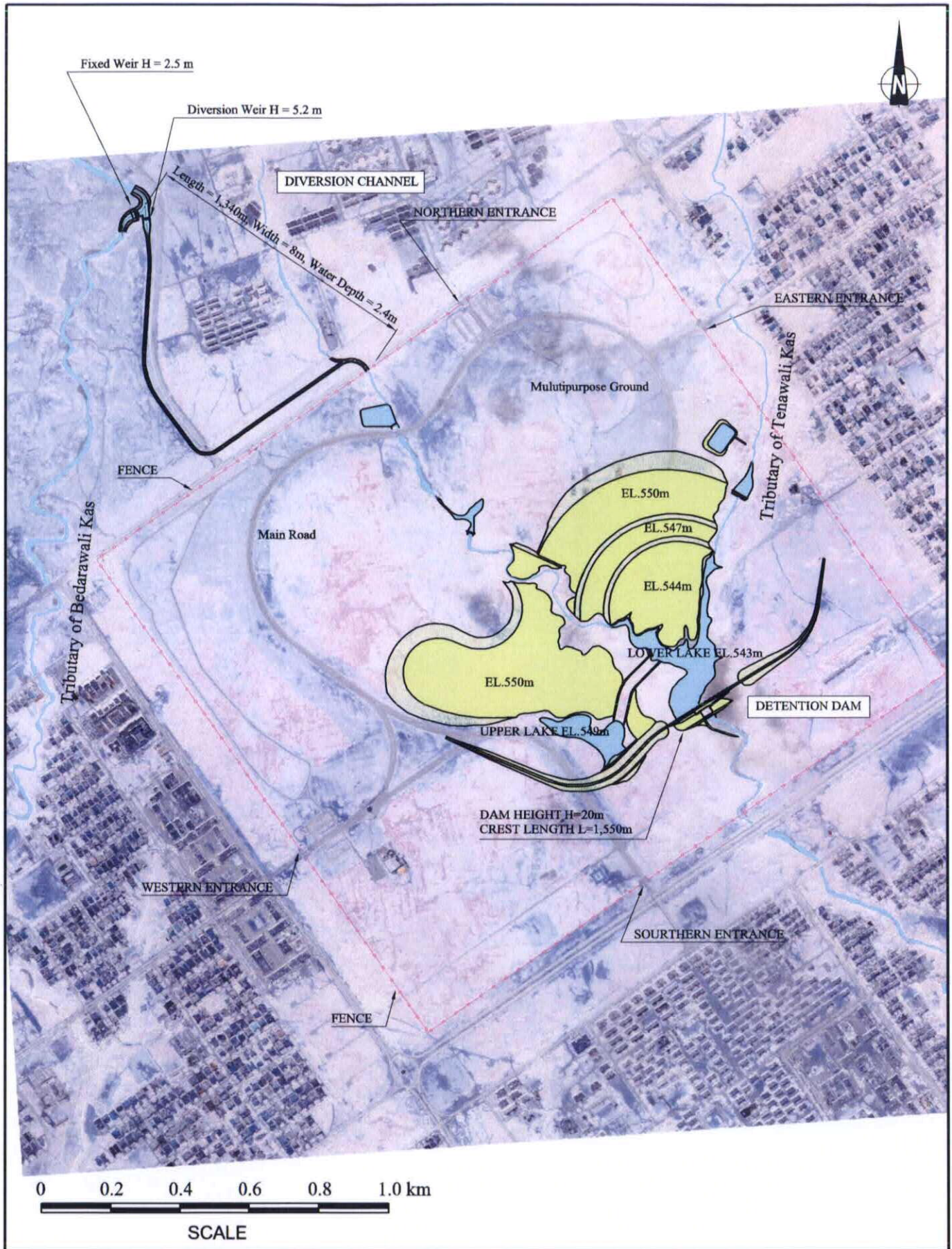


THE STUDY ON COMPREHENSIVE FLOOD MITIGATION  
AND ENVIRONMENTAL IMPROVEMENT PLAN  
OF LAI NULLAH BASIN  
IN THE ISLAMIC REPUBLIC OF PAKISTAN

JAPAN INTERNATIONAL COOPERATION AGENCY

Fig. 6.2.11  
Existing Conditions of Fatima Jinnah Park





THE STUDY ON COMPREHENSIVE FLOOD MITIGATION  
AND ENVIRONMENTAL IMPROVEMENT PLAN  
OF LAI NULLAH BASIN  
IN THE ISLAMIC REPUBLIC OF PAKISTAN  
JAPAN INTERNATIONAL COOPERATION AGENCY

Fig. 6.2.12  
Layout Plan of Flood Diversion  
from Tributary of Bedarawali Kas