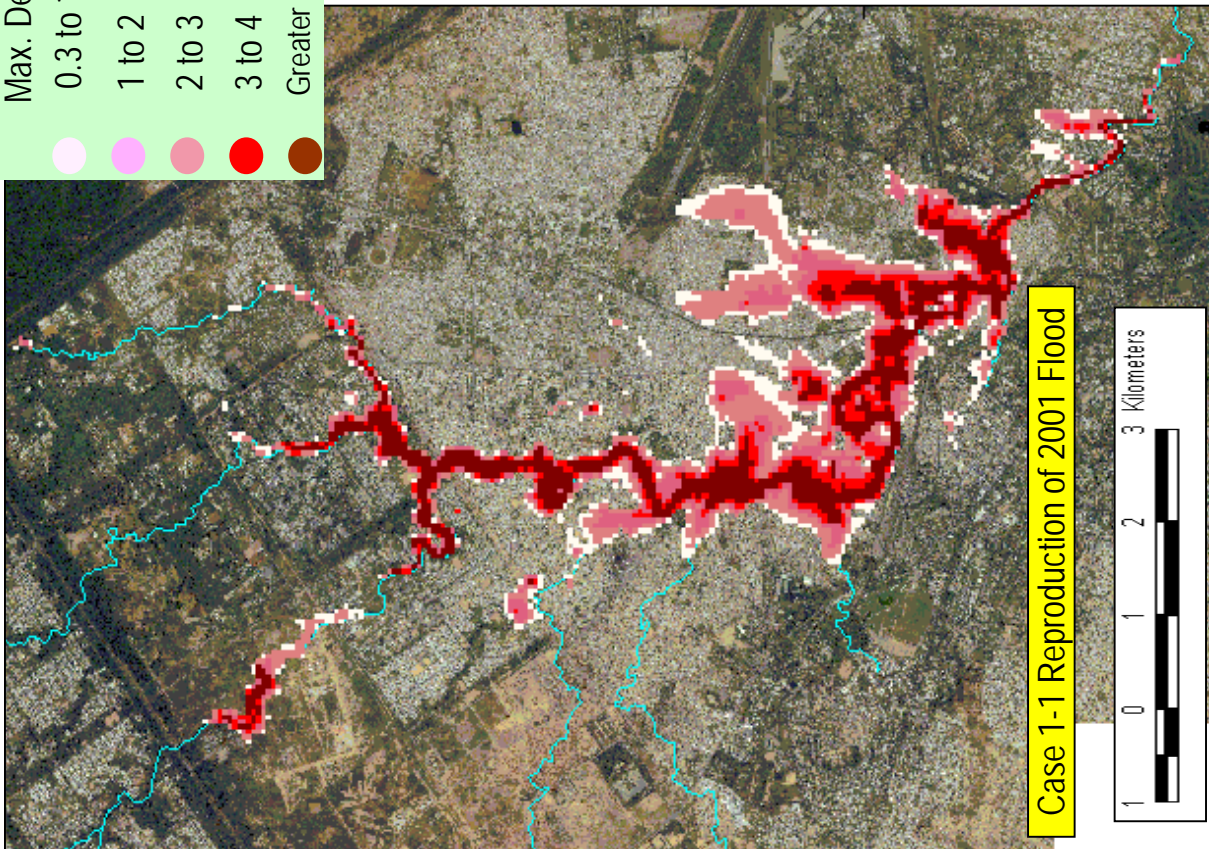
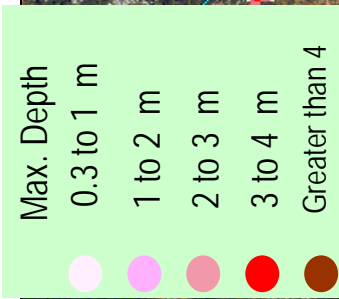
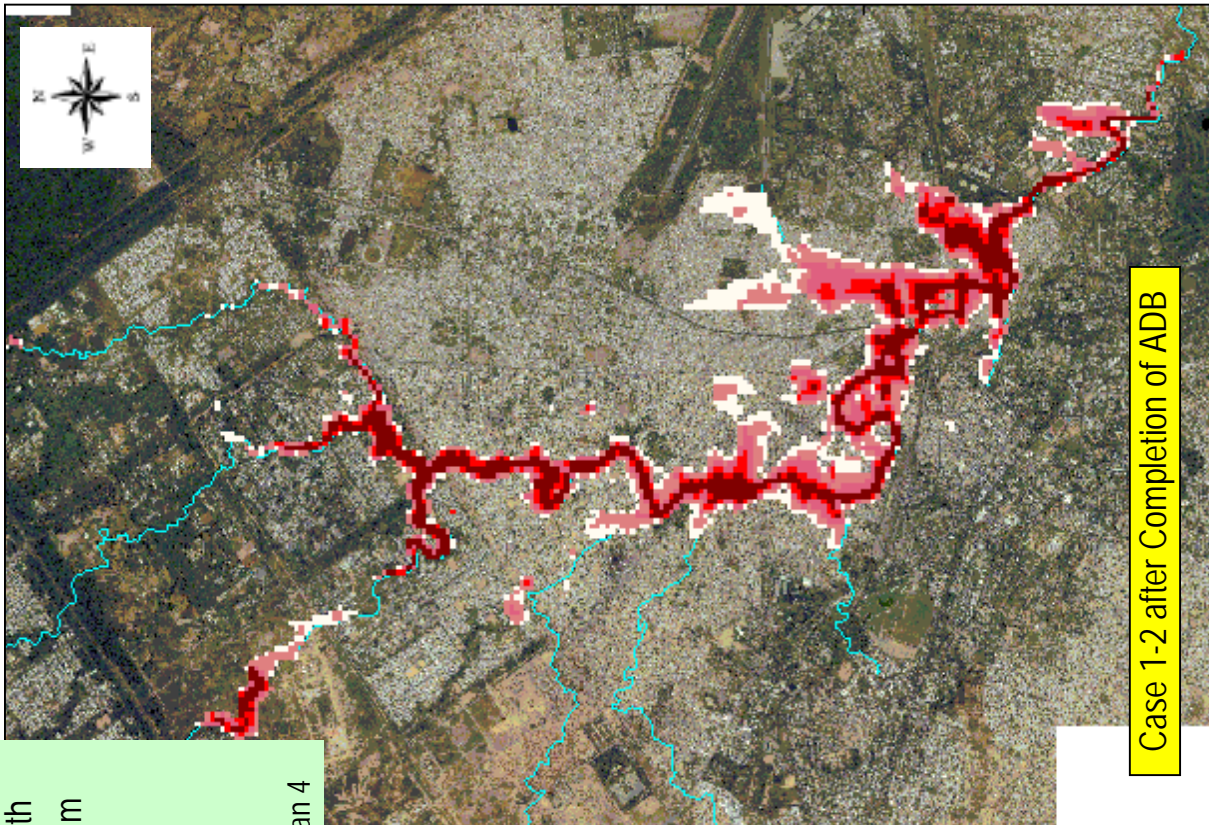


THE STUDY ON COMPREHENSIVE FLOOD  
MITIGATION  
AND ENVIRONMENT IMPROVEMENT PLAN  
OF LAI NULLAH BASIN

JAPAN INTERNATIONAL COOPERATION AGENCY

Fig. 5. 2. 3  
Comparison of Generated Flood Map  
and Interview Survey Results



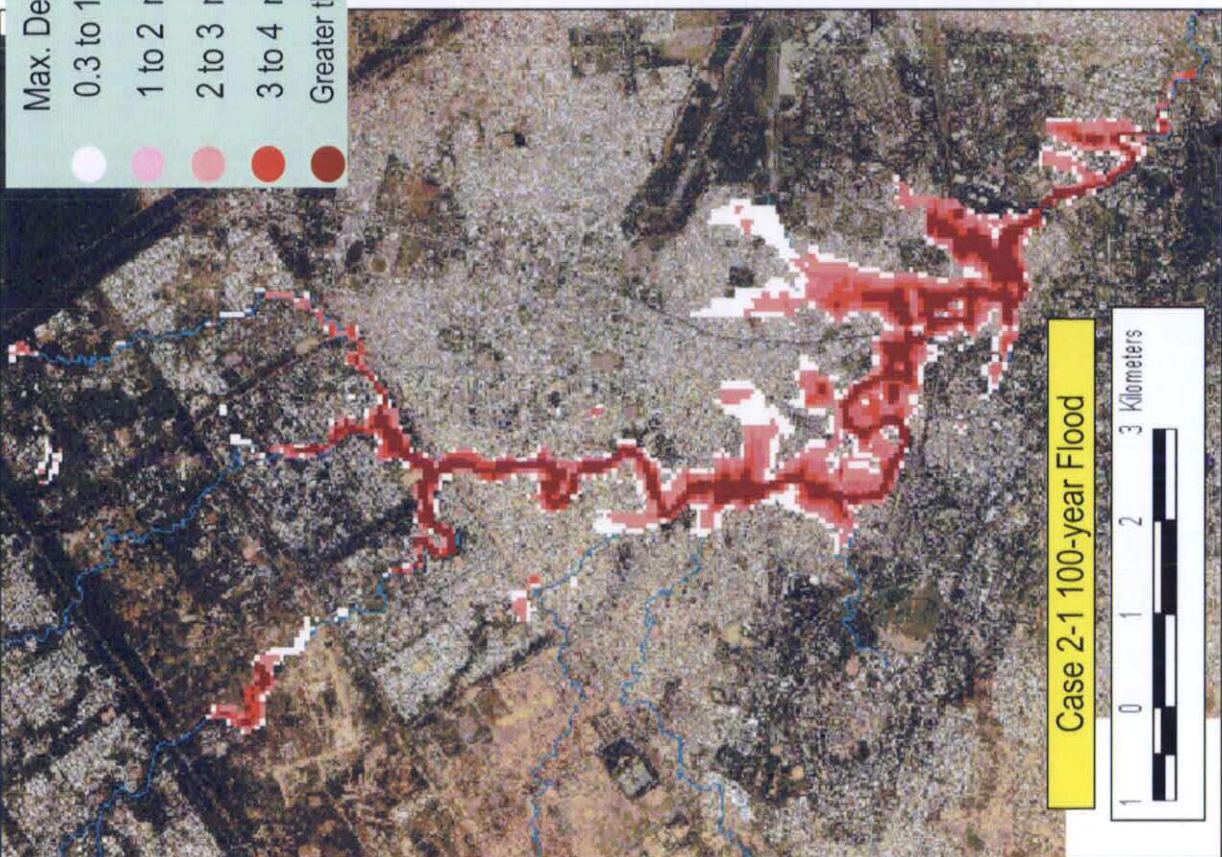
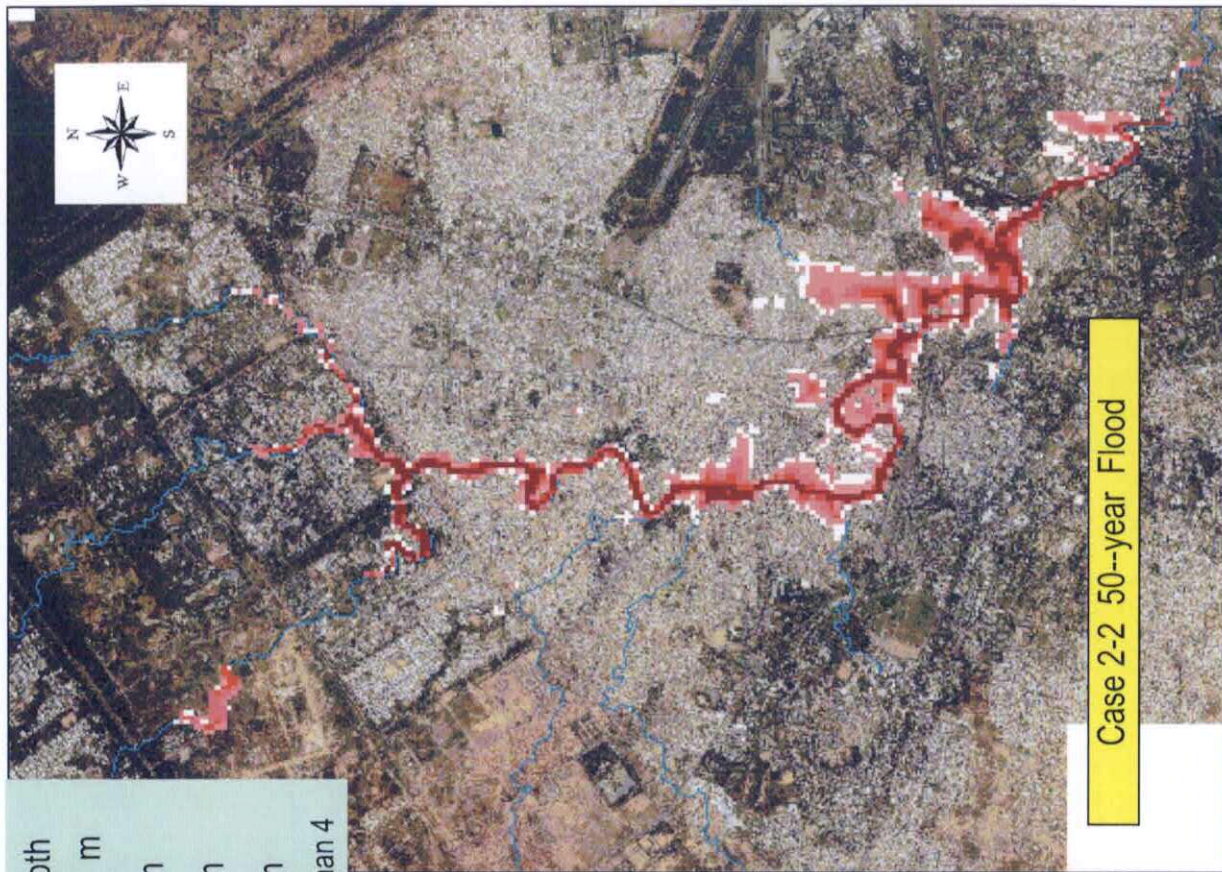


THE STUDY ON COMPREHENSIVE FLOOD  
MITIGATION  
AND ENVIRONMENT IMPROVEMENT PLAN  
OF LAI NULLAH BASIN

JAPAN INTERNATIONAL COOPERATION AGENCY

Fig. 5.2.4 (1/3)  
Flood Mapping (Cases 1-1 and 1-2)





THE STUDY ON COMPREHENSIVE FLOOD MITIGATION  
AND ENVIRONMENT IMPROVEMENT PLAN  
OF LAI NULLAH BASIN  
IN THE ISLAMIC REPUBLIC OF PAKISTAN  
JAPAN INTERNATIONAL COOPERATION AGENCY

Fig. 5.2.4 (2/3)  
Flood Mapping (Cases 2-1 and 2-2)



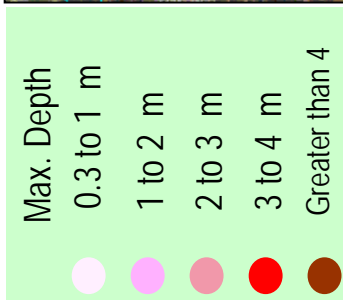
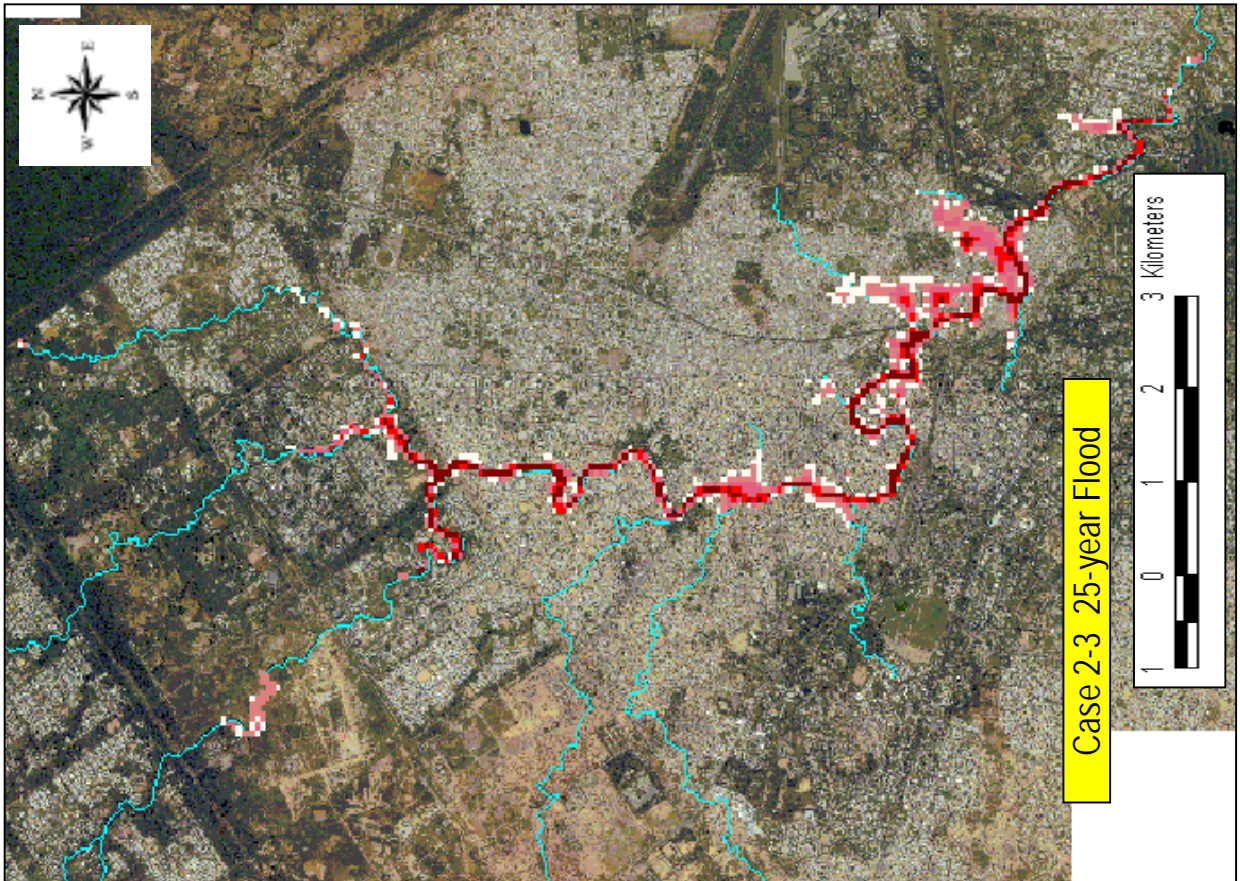


Fig. 5.2.4 (3/3)  
Flood Mapping (Cases 2-3)