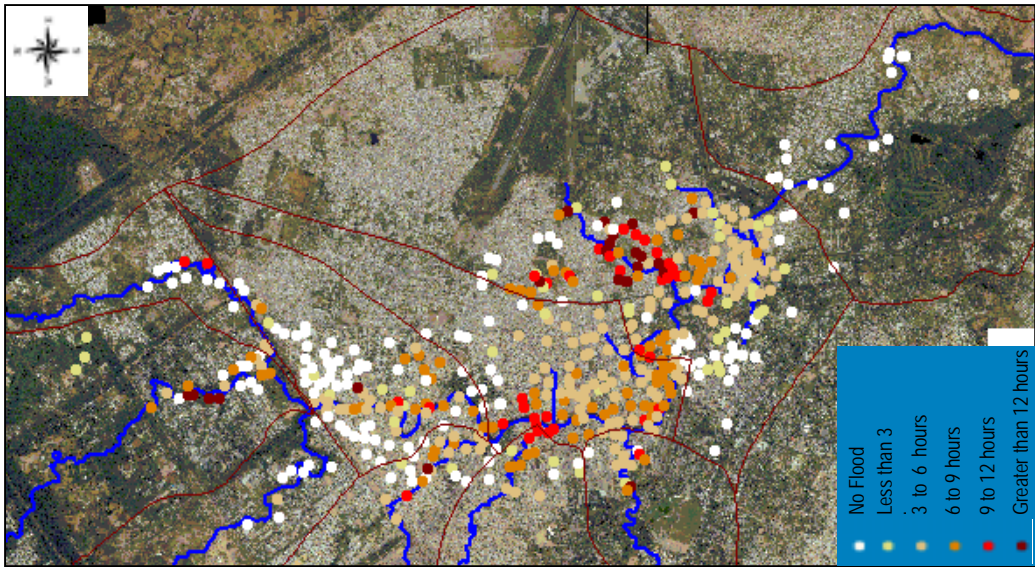
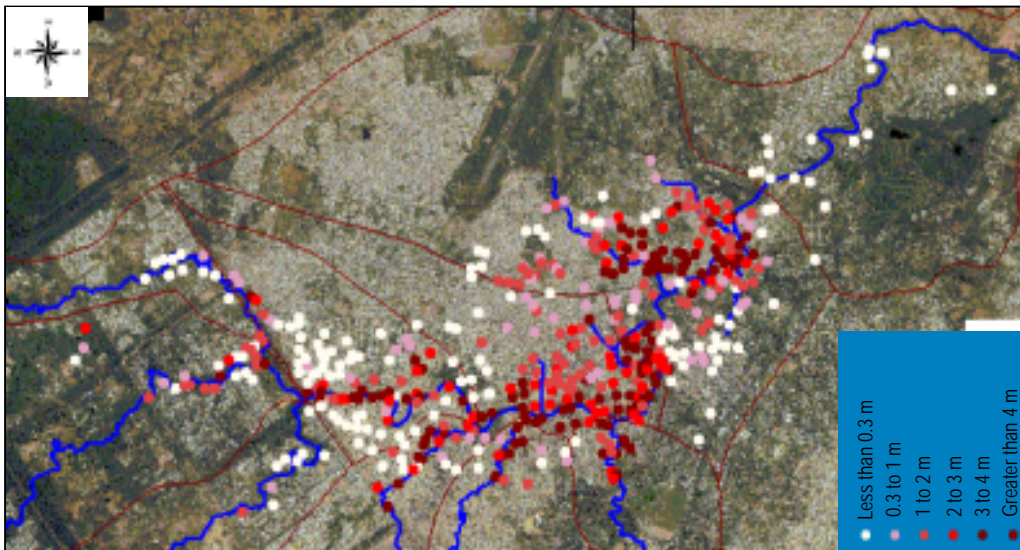


**Causes Of Flood Inundation  
During 2001 Flood**



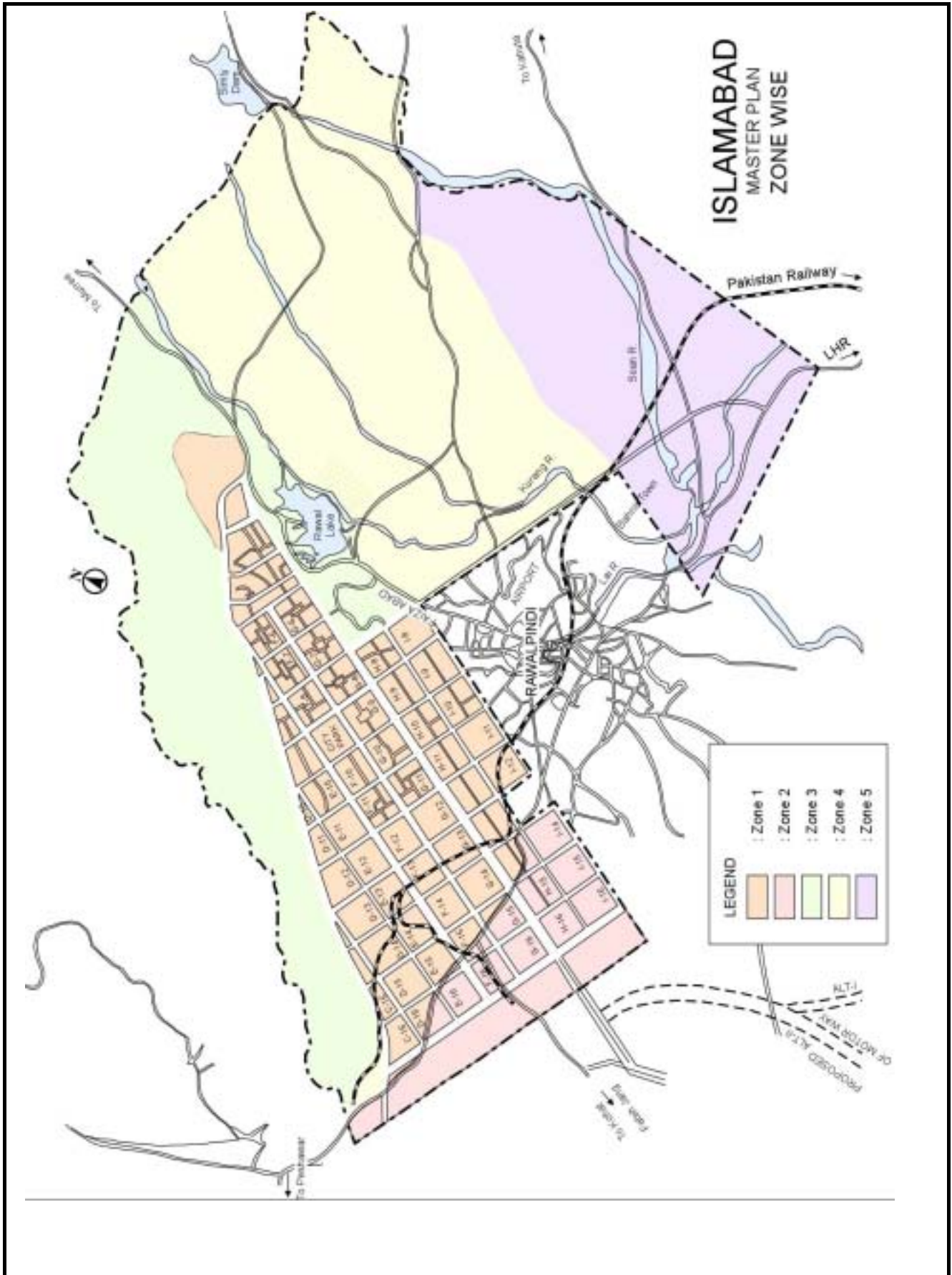
**Duration Of Flood Inundation  
During 2001 Flood**



**Maximum Flood Inundation Depths  
During 2001 Flood**



Fig. 2.5.1  
Results of Flood Inundation Interview  
Survey

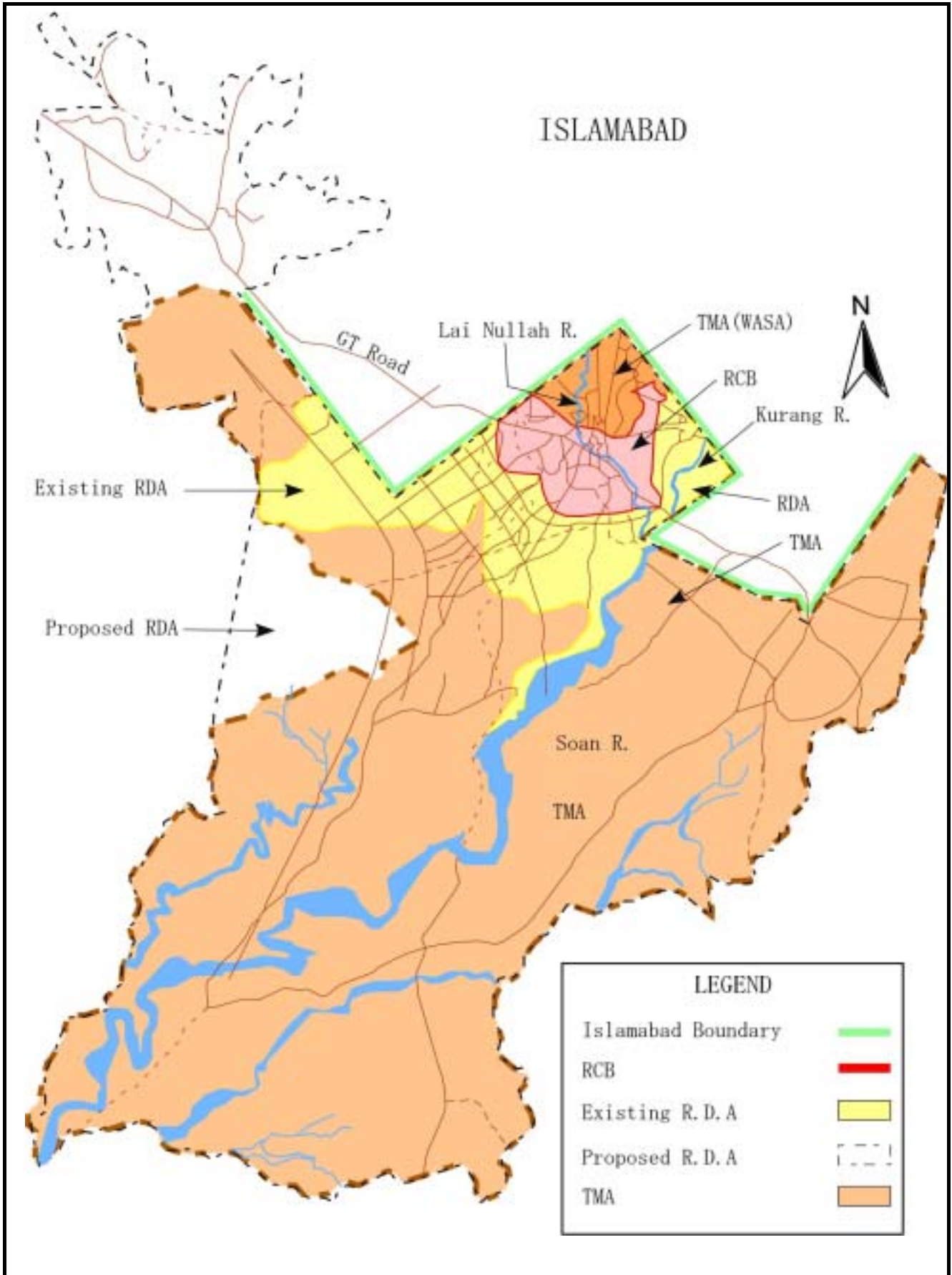


THE STUDY ON COMPREHENSIVE FLOOD MITIGATION  
AND ENVIRONMENTAL IMPROVEMENT PLAN  
OF LAI NULLAH BASIN  
IN THE ISLAMIC REPUBLIC OF PAKISTAN

JAPAN INTERNATIONAL COOPERATION AGENCY

Fig. 3.1.1.

Islamabad Area of the Master Plan

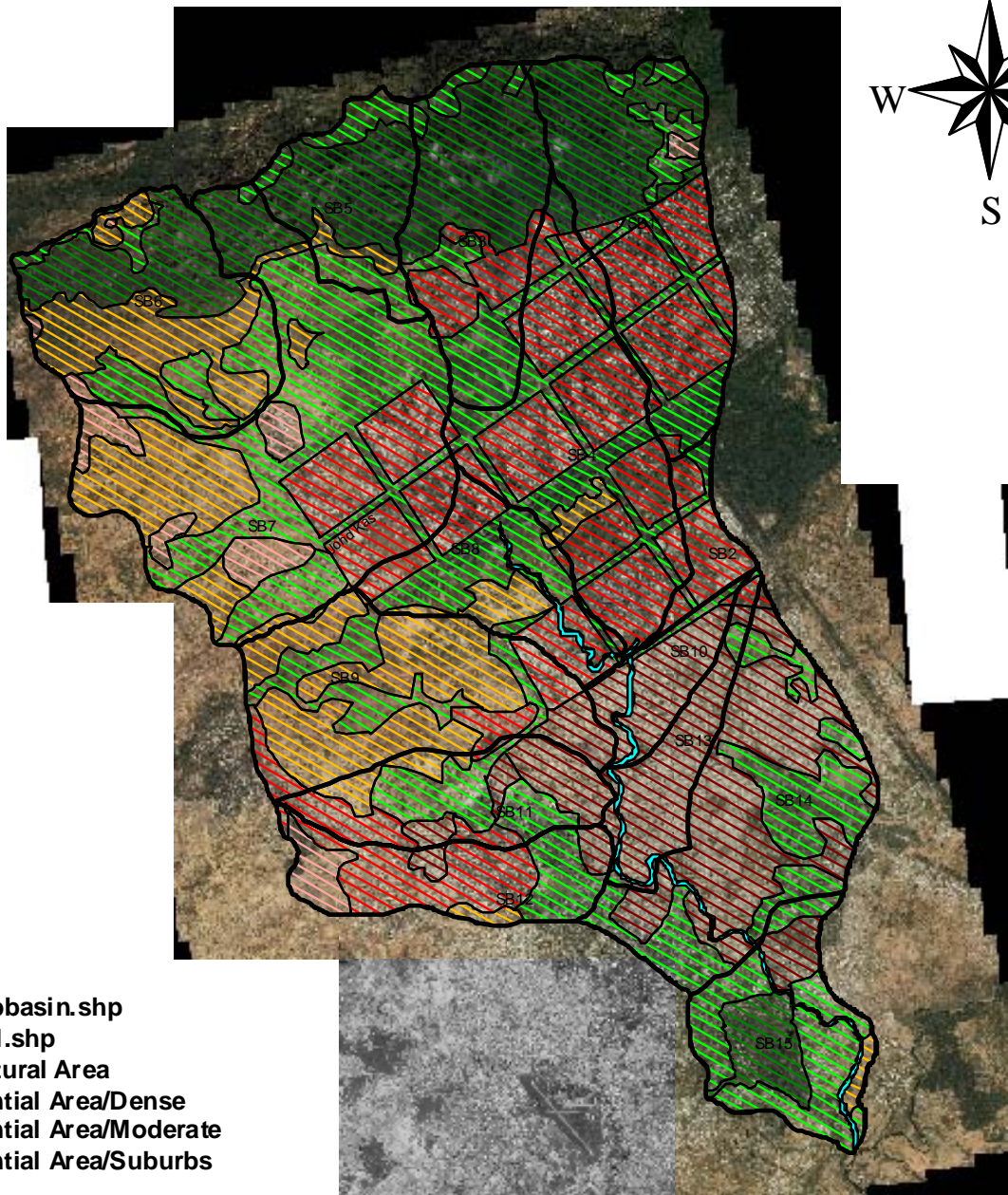


THE STUDY ON COMPREHENSIVE FLOOD MITIGATION  
AND ENVIRONMENTAL IMPROVEMENT PLAN  
OF LAI NULLAH BASIN  
IN THE ISLAMIC REPUBLIC OF PAKISTAN

JAPAN INTERNATIONAL COOPERATION AGENCY

Fig. 3.1.2.

Jurisdiction and Administration of Rawalpindi



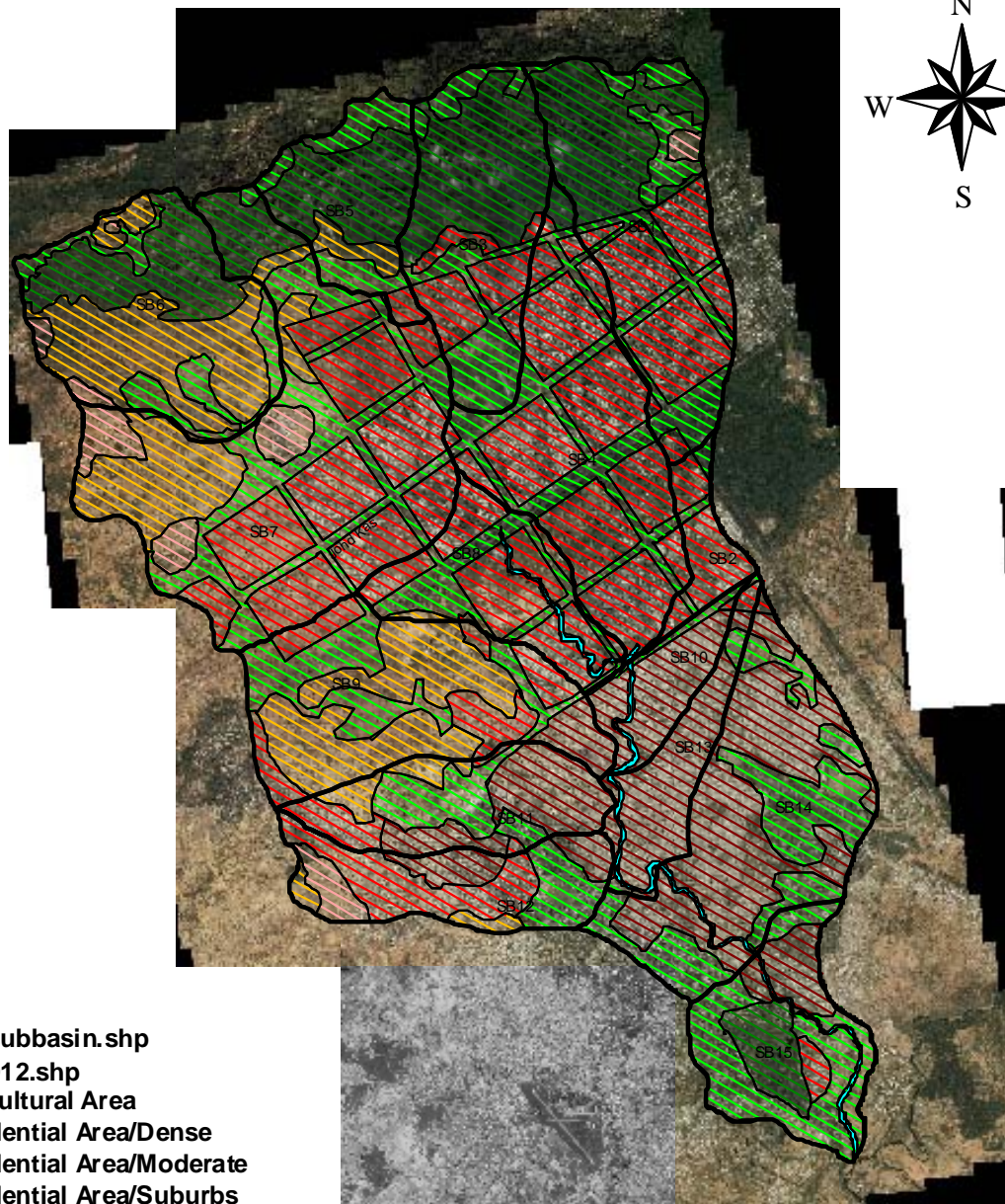
- ▭ Newsubbasin.shp
- Landuse2001.shp
- ▨ Agricultural Area
- ▨ Residential Area/Dense
- ▨ Residential Area/Moderate
- ▨ Residential Area/Suburbs
- ▨ Forest
- ▨ Bare Land

THE STUDY ON COMPREHENSIVE FLOOD MITIGATION  
AND ENVIRONMENTAL IMPROVEMENT PLAN  
OF LAI NULLAH BASIN  
IN THE ISLAMIC REPUBLIC OF PAKISTAN

JAPAN INTERNATIONAL COOPERATION AGENCY

Fig. 3.1.3

Land Use of the Study Area in 2001



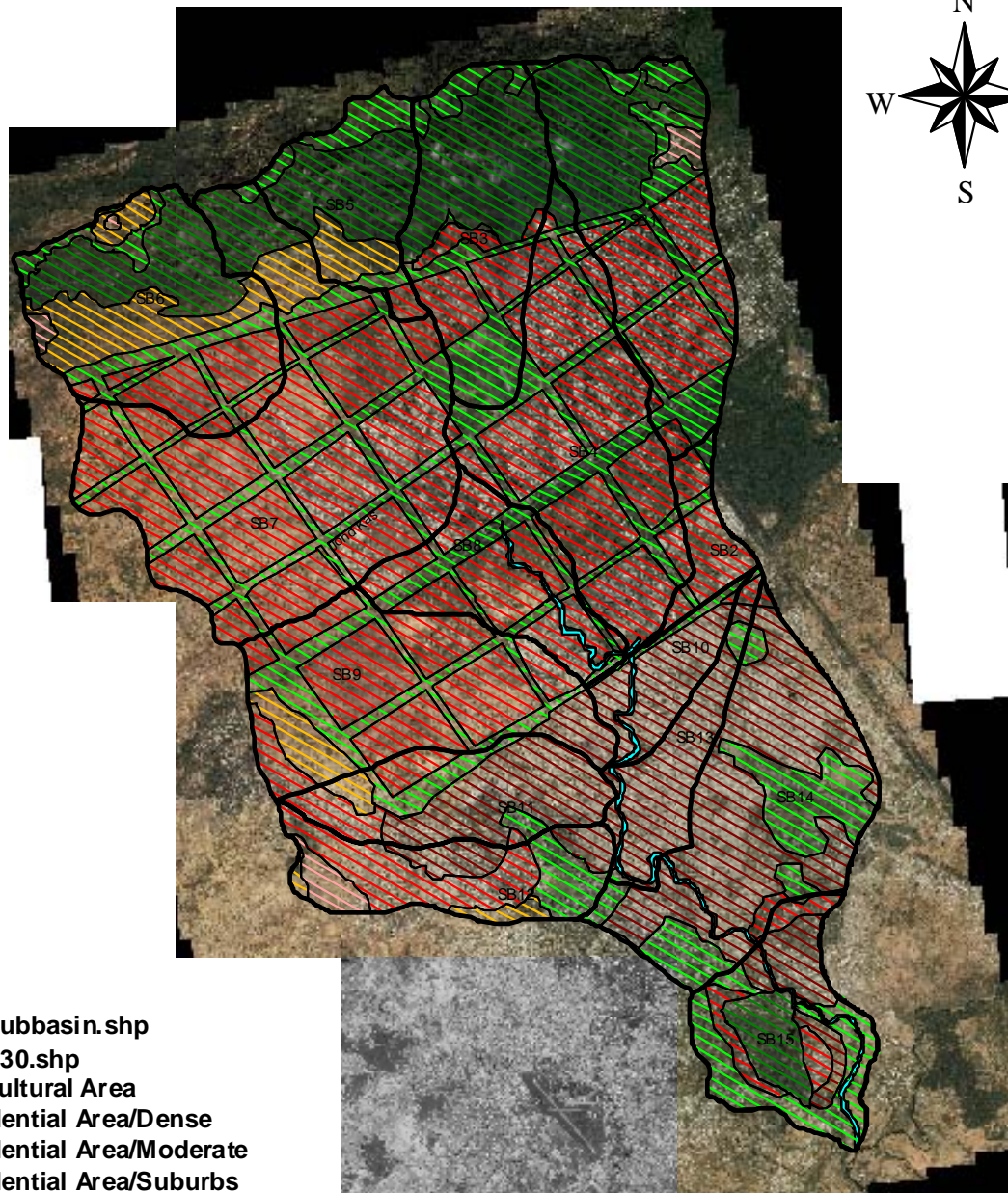
- Newsubbasin.shp
- Landuse2012.shp
- ▨ Agricultural Area
- ▨ Residential Area/Dense
- ▨ Residential Area/Moderate
- ▨ Residential Area/Suburbs
- ▨ Forest

THE STUDY ON COMPREHENSIVE FLOOD MITIGATION  
AND ENVIRONMENTAL IMPROVEMENT PLAN  
OF LAI NULLAH BASIN  
IN THE ISLAMIC REPUBLIC OF PAKISTAN

JAPAN INTERNATIONAL COOPERATION AGENCY

Fig. 3.1.4

Land Use of the Study Area in 2012



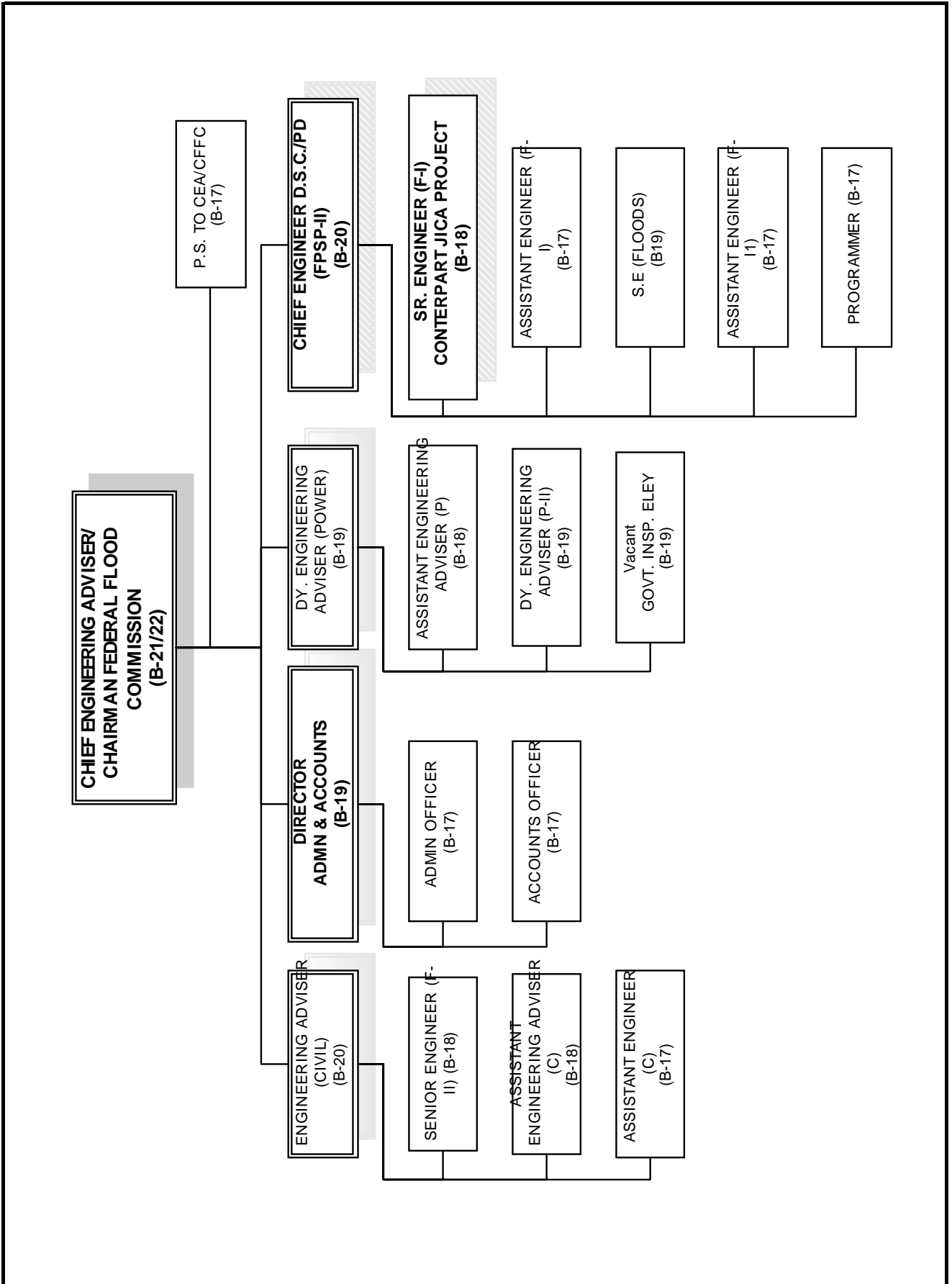
- Newsubbasin.shp
- Landuse2030.shp
- Agricultural Area
- Residential Area/Dense
- Residential Area/Moderate
- Residential Area/Suburbs
- Forest

THE STUDY ON COMPREHENSIVE FLOOD MITIGATION  
AND ENVIRONMENTAL IMPROVEMENT PLAN  
OF LAI NULLAH BASIN  
IN THE ISLAMIC REPUBLIC OF PAKISTAN

JAPAN INTERNATIONAL COOPERATION AGENCY

Fig.3.1.5

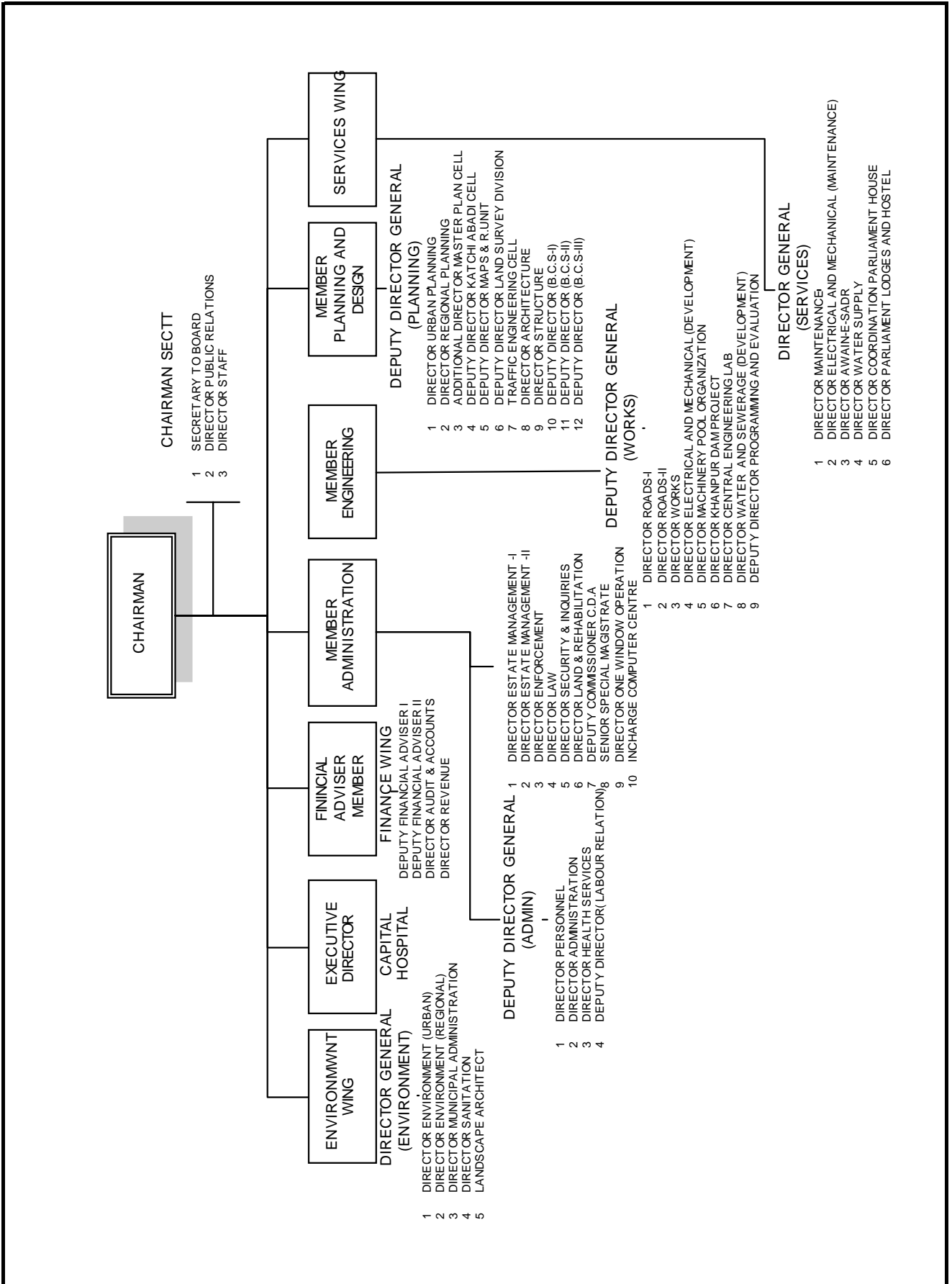
Land Use of the Study Area in 2030



THE STUDY ON COMPREHENSIVE FLOOD MITIGATION  
AND ENVIRONMENTAL IMPROVEMENT PLAN  
OF LAI NULLAH BASIN  
IN THE ISLAMIC REPUBLIC OF PAKISTAN  
JAPAN INTERNATIONAL COOPERATION AGENCY

Fig. 3.3.1

Organization Chart of Office of the Chief  
Engineering Adviser/Chairman Federal Flood  
Commission Ministry of Water and Power



THE STUDY ON COMPREHENSIVE FLOOD MITIGATION AND ENVIRONMENTAL IMPROVEMENT PLAN OF LAI NULLAH BASIN IN THE ISLAMIC REPUBLIC OF PAKISTAN

JAPAN INTERNATIONAL COOPERATION AGENCY

Fig. 3.3.2

Organization Chart of Capital Development Authority (CDA)



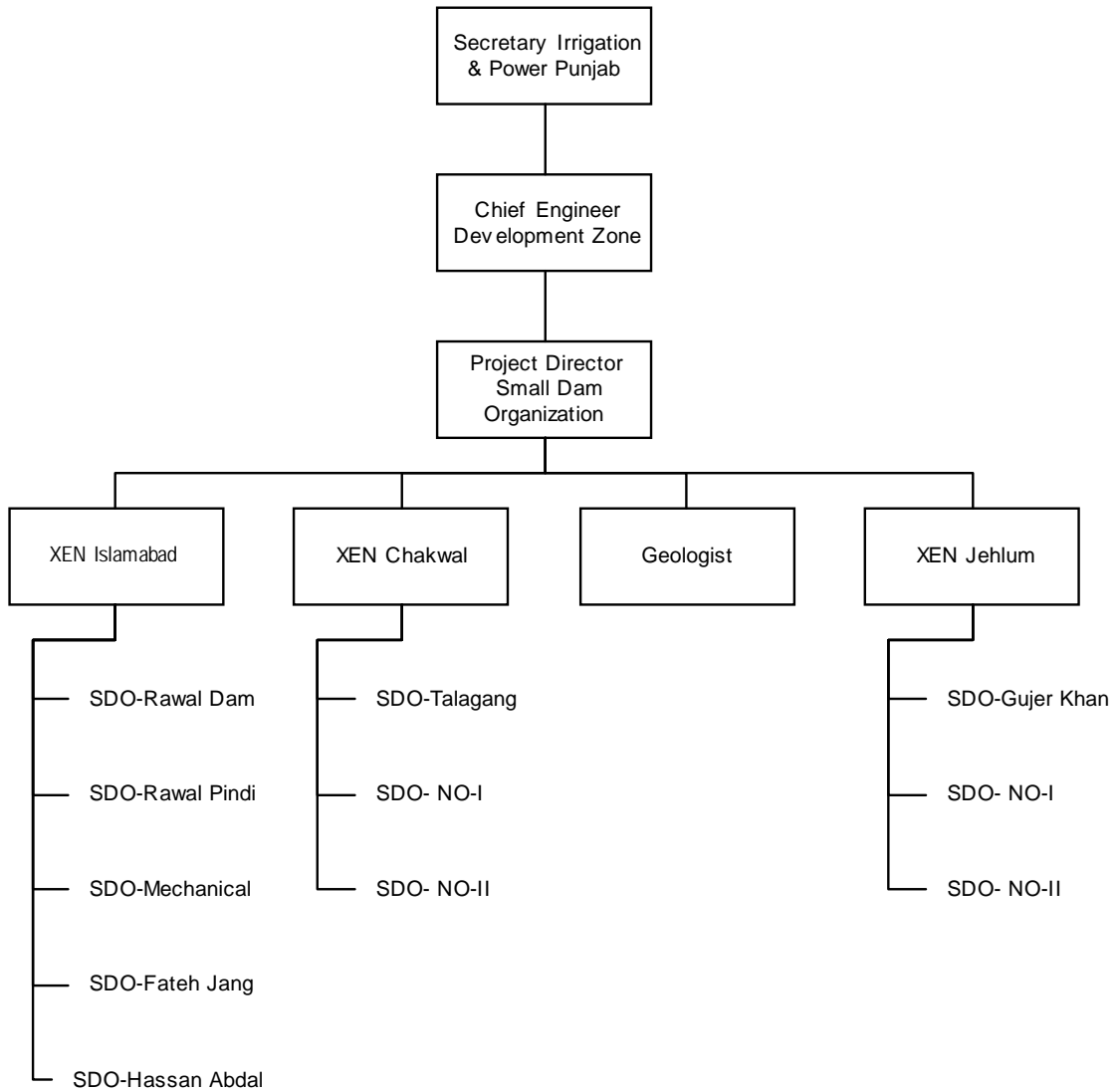
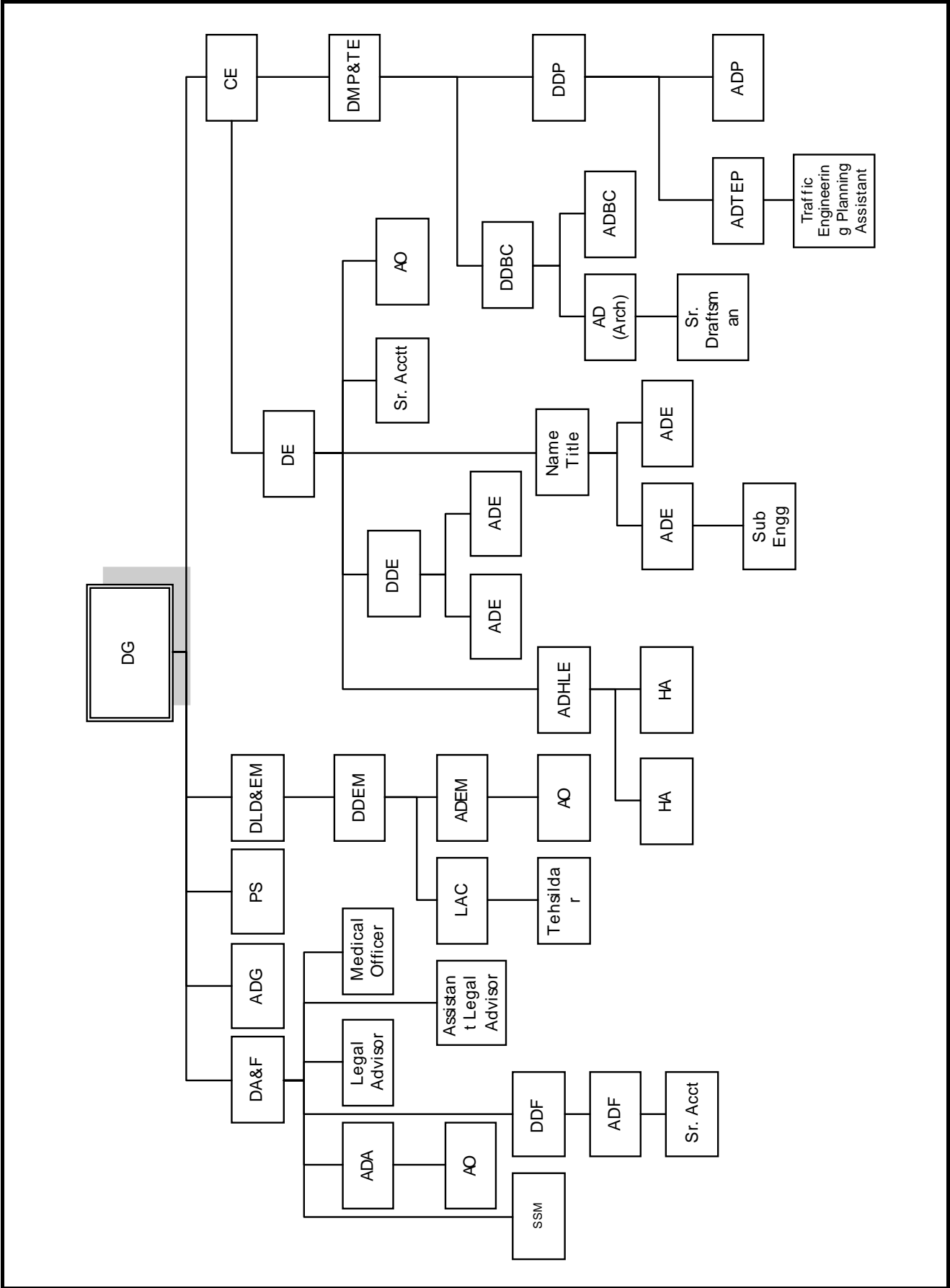


Fig. 3.3.3

Organization Chart of Small Dams Organization (SDO)



THE STUDY ON COMPREHENSIVE FLOOD MITIGATION AND ENVIRONMENTAL IMPROVEMENT PLAN OF LAI NULLAH BASIN IN THE ISLAMIC REPUBLIC OF PAKISTAN  
 JAPAN INTERNATIONAL COOPERATION AGENCY

Fig. 3.3.4  
 Organization Chart of Rawalpindi Development Authority (RDA) Urban Development Wing

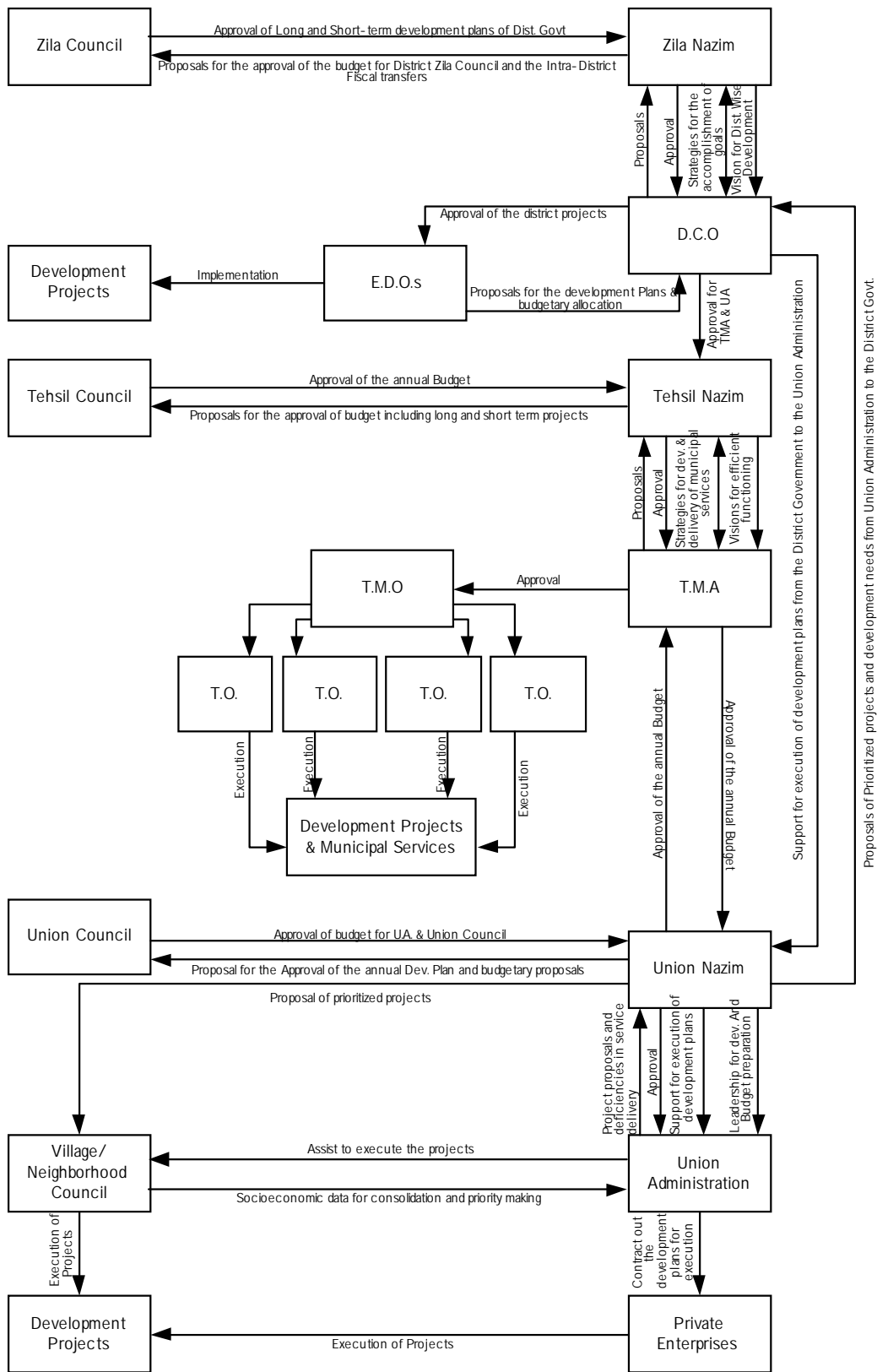


Fig. 3.3.5

Organization Chart of District Tehsil and Union Administration

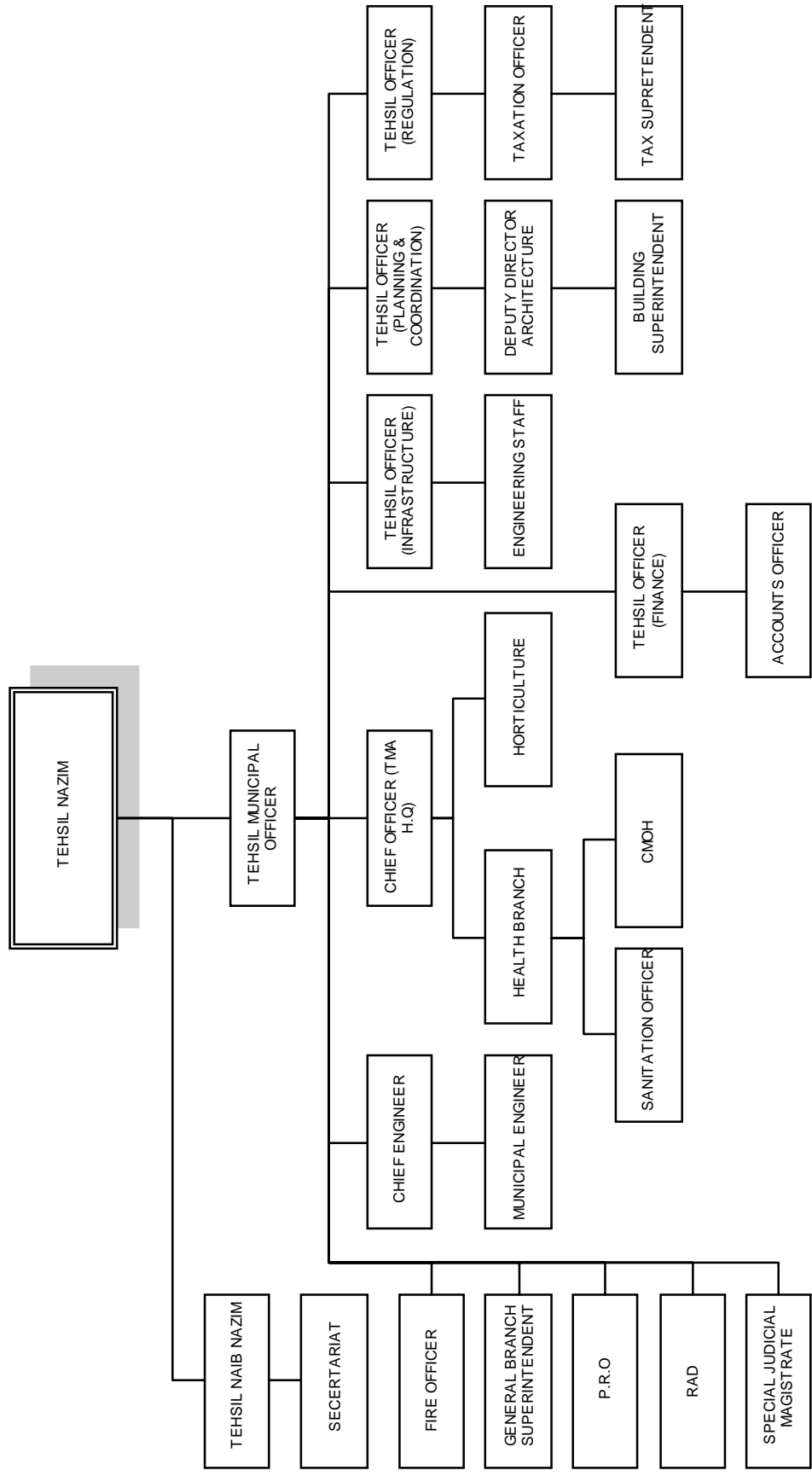
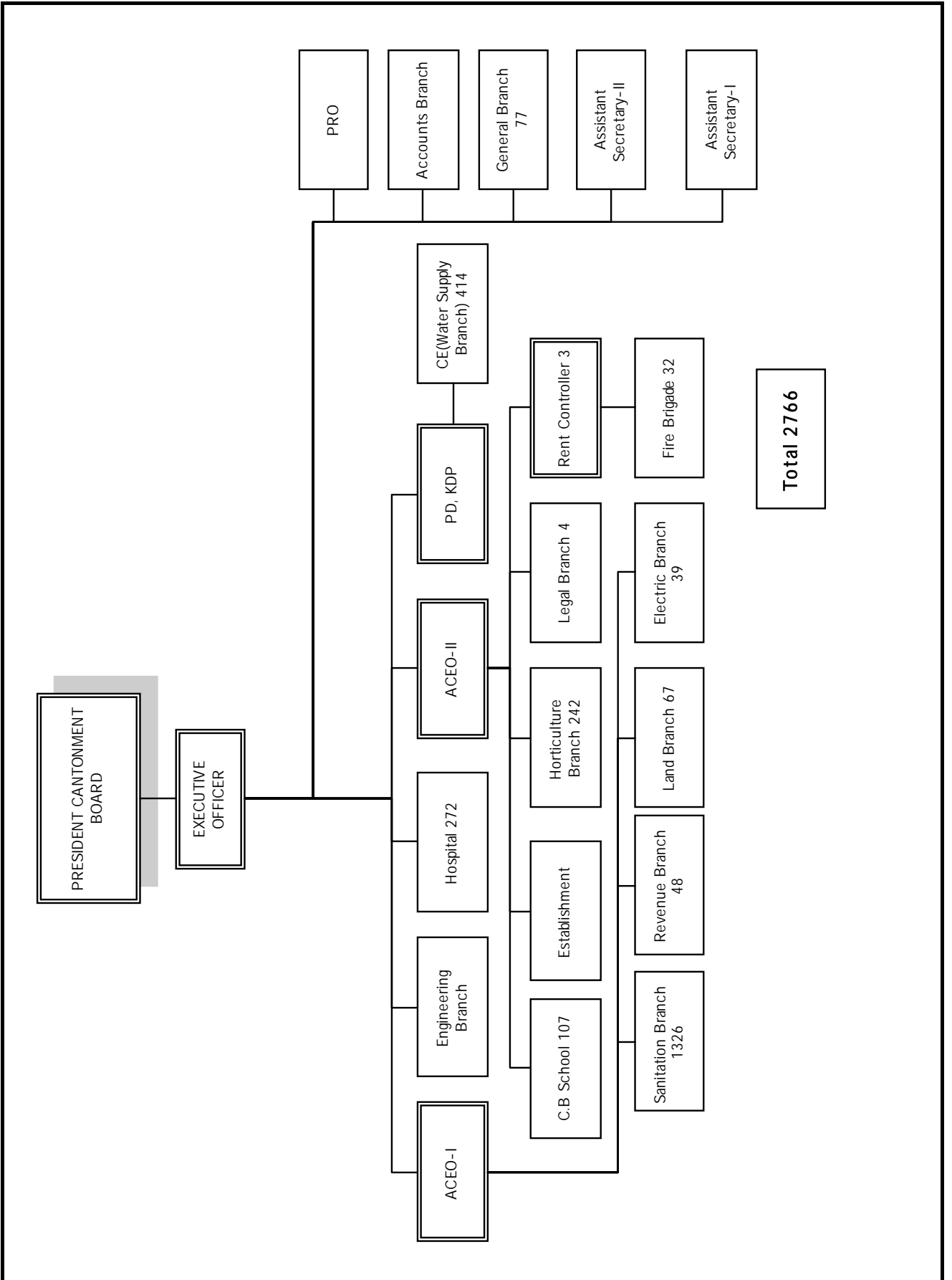


Fig. 3.3.6  
 Organization Chart of Tehsil Municipal Administration Rawalpindi



Total 2766

Fig. 3.3.7  
 Organization Chart of Rawalpindi Cantonment Board