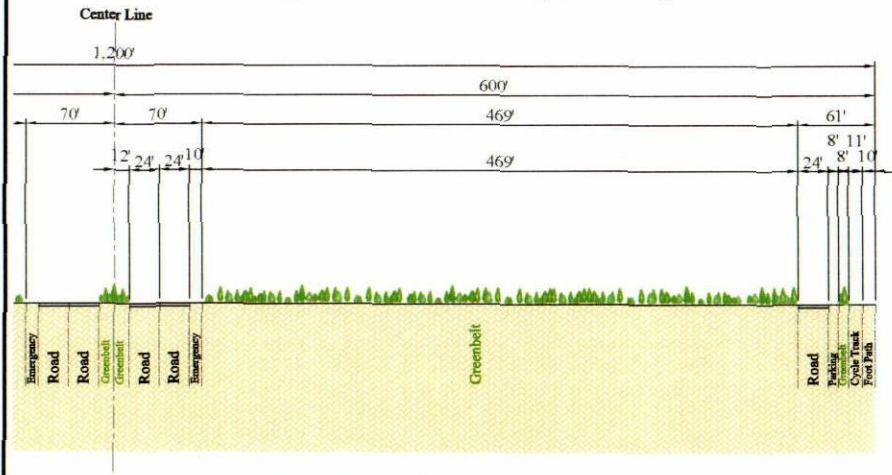


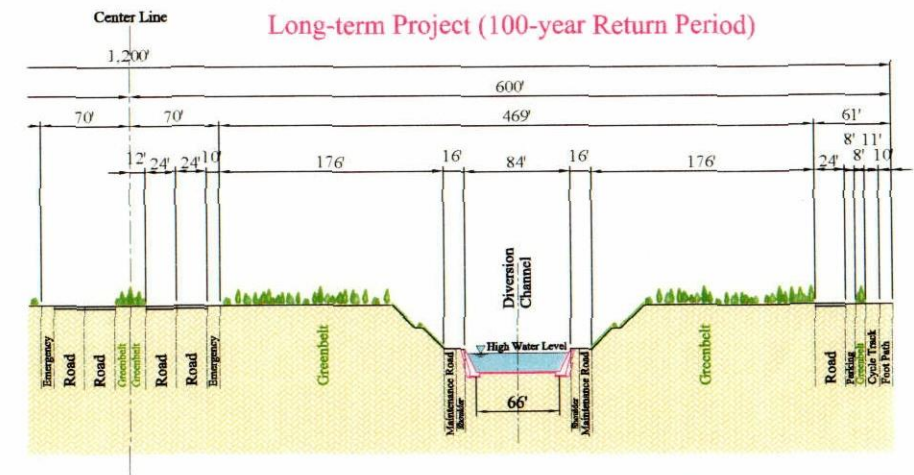
Section of Kasihimir Highway

Typical Cross Section planned by CDA



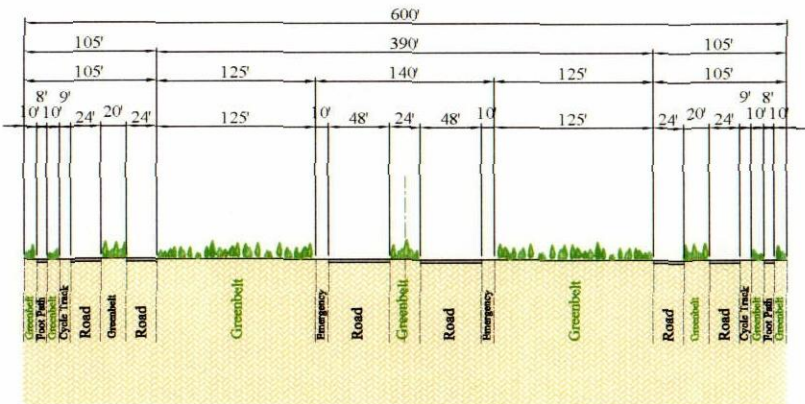
Section A - A

**Flood Diversion Channel with Maintenance Road
Long-term Project (100-year Return Period)**



Section of Khayaban-E-Johar Road

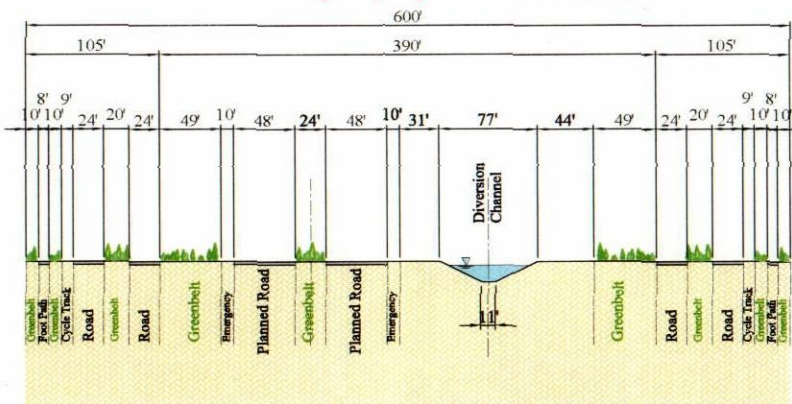
Typical Cross Section planned by CDA



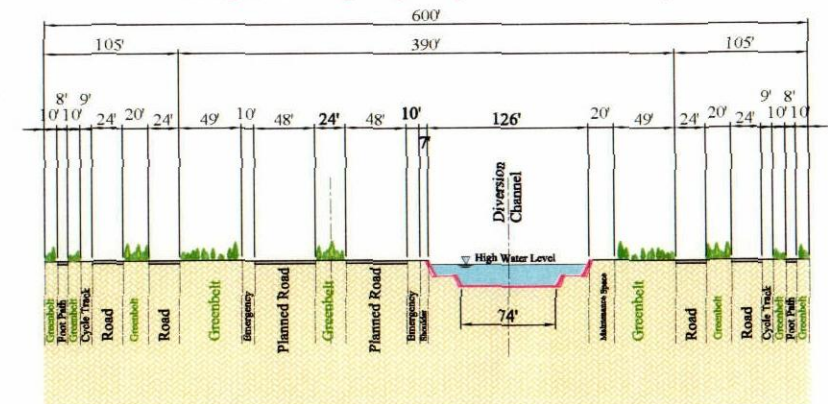
Section B - B

Flood Diversion Channel with Road planned by CDA

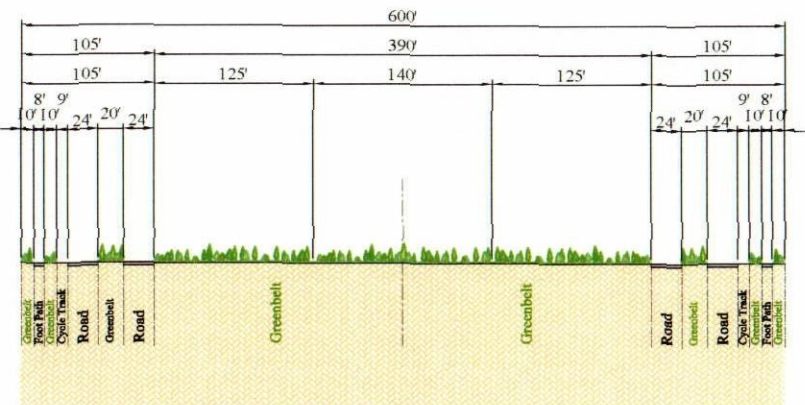
Short-term Project (25-year Return Period)



Long-term Project (100-year Return Period)



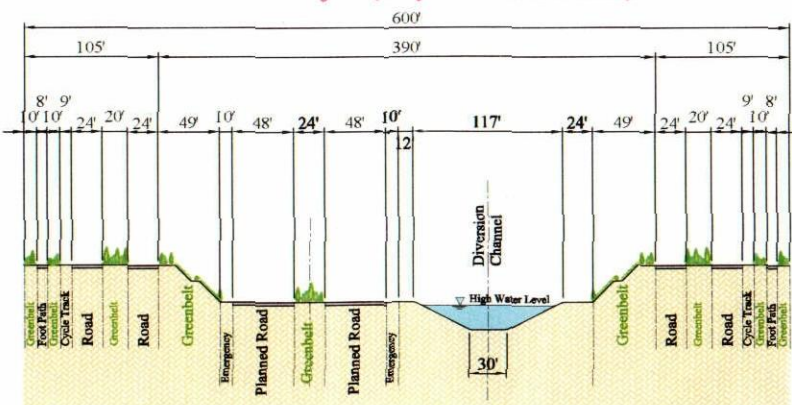
Existing Condition



Section C - C

Flood Diversion Channel with Road planned by CDA

Short-term Project (25-year Return Period)



Long-term Project (100-year Return Period)

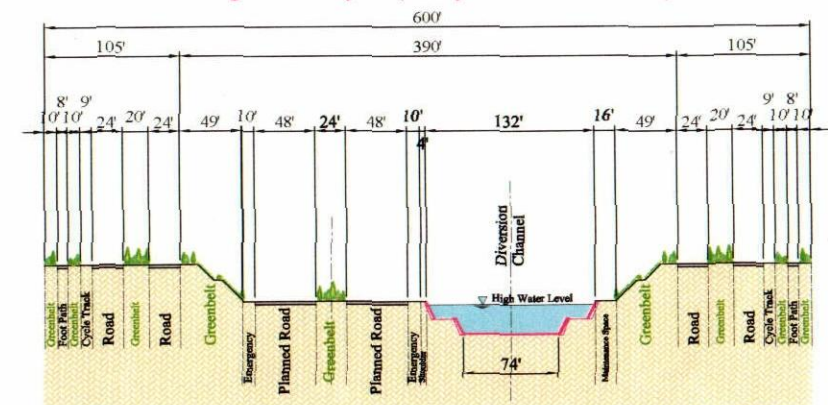
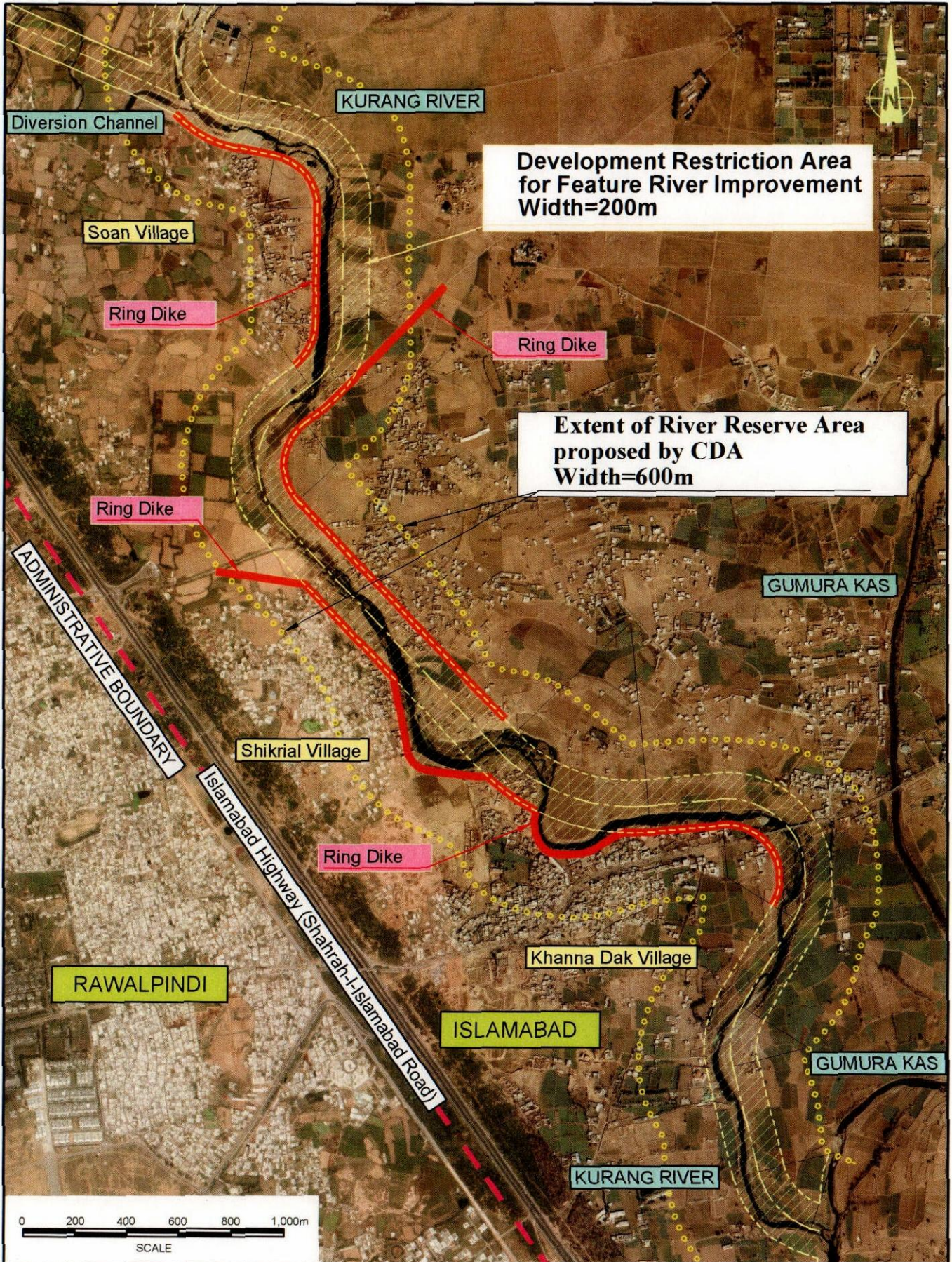


Fig. 21
Cross Sectional Layout of Flood Diversion Channel



THE STUDY ON COMPREHENSIVE FLOOD MITIGATION
AND ENVIRONMENTAL IMPROVEMENT PLAN
OF LAI NULLAH BASIN
IN THE ISLAMIC REPUBLIC OF PAKISTAN
JAPAN INTERNATIONAL COOPERATION AGENCY

Fig. 22
Ring Dike and River Reserve Area
along Kurang River

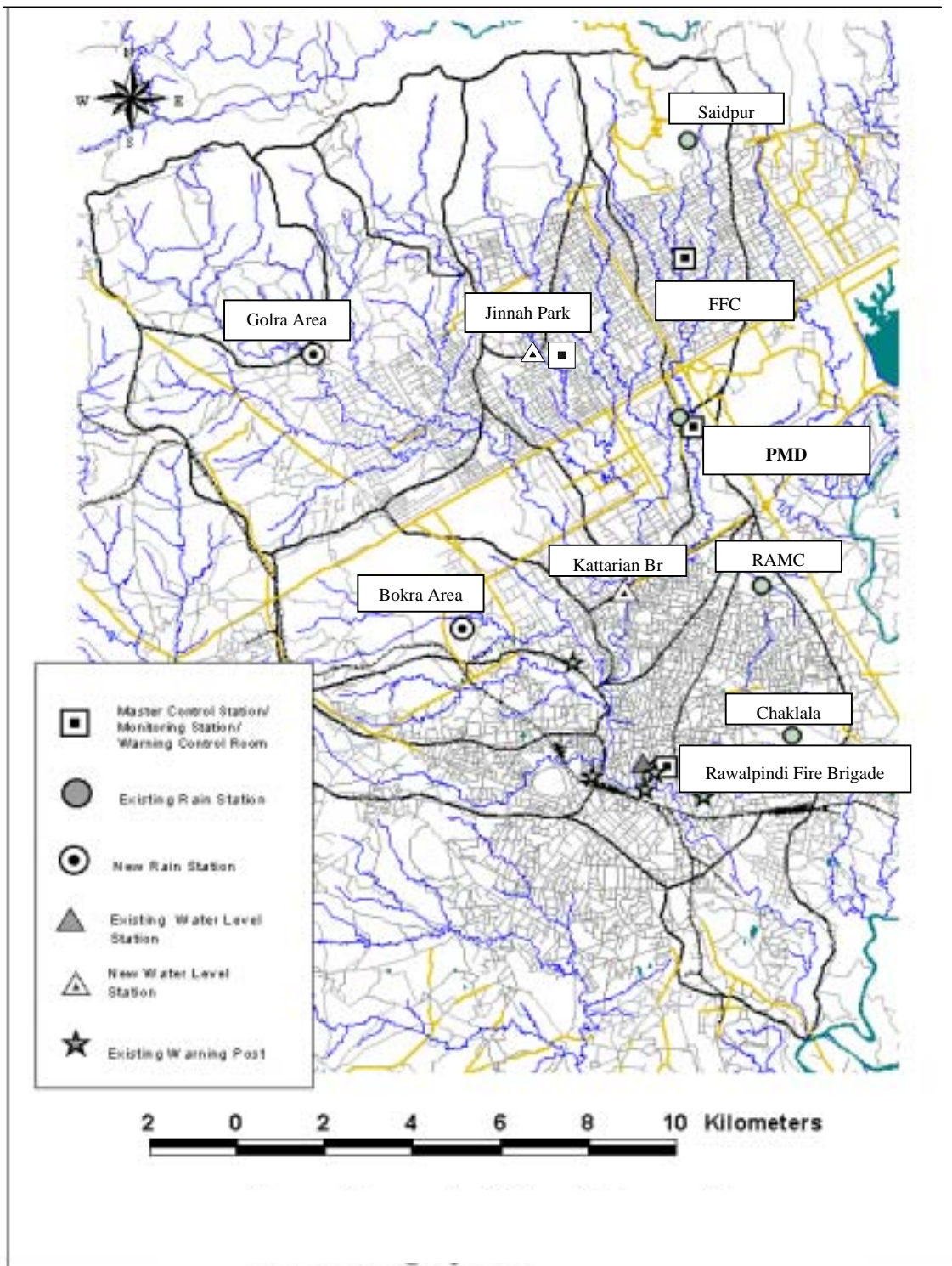


Fig. 23

General Layout of Flood Forecasting and
Warning System

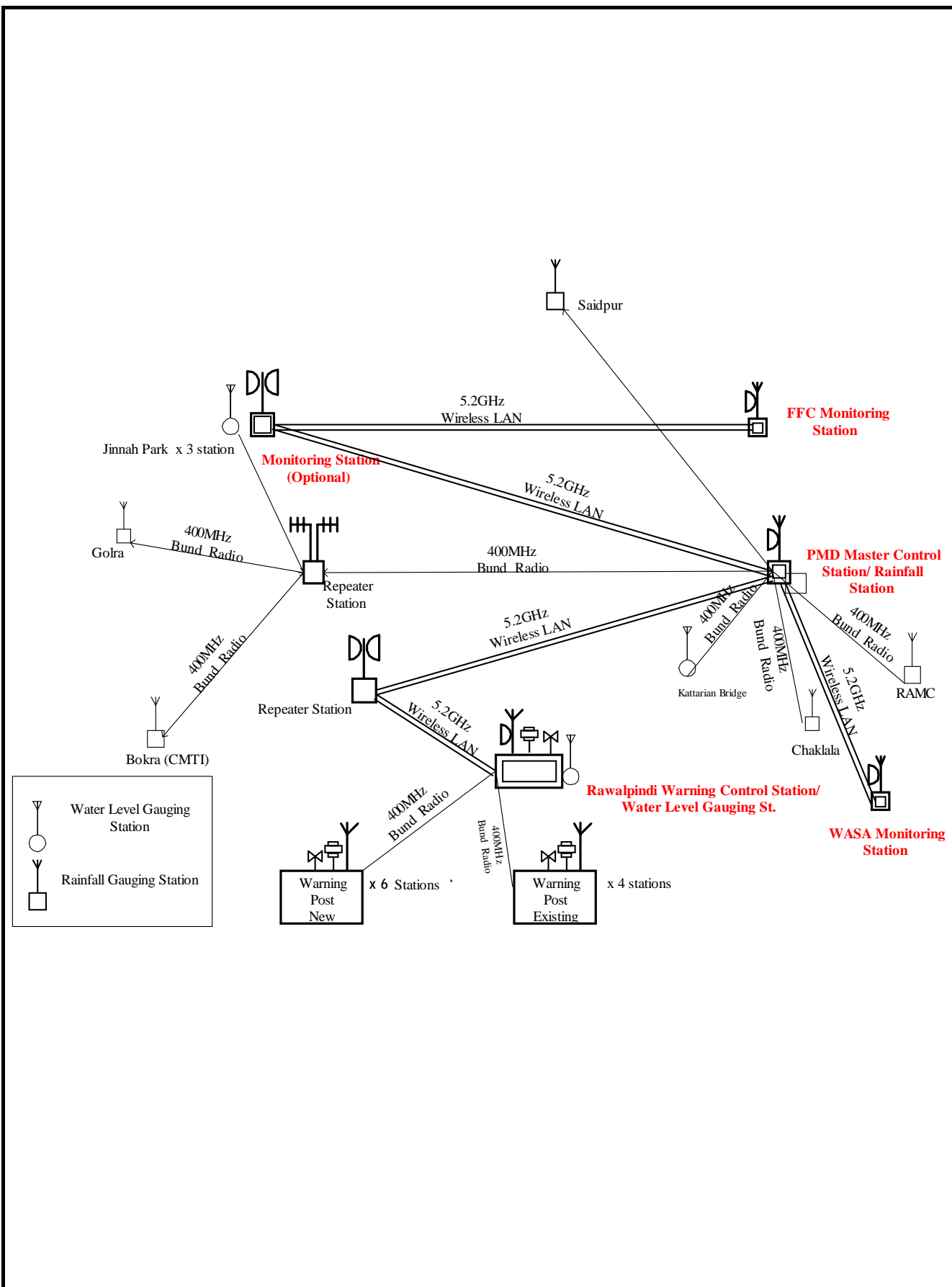
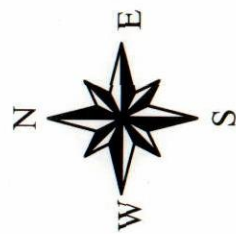
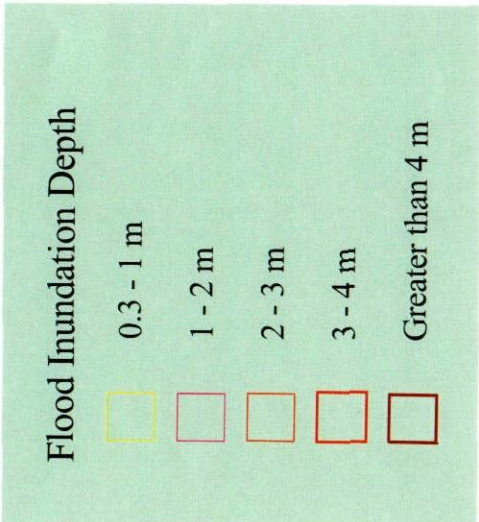
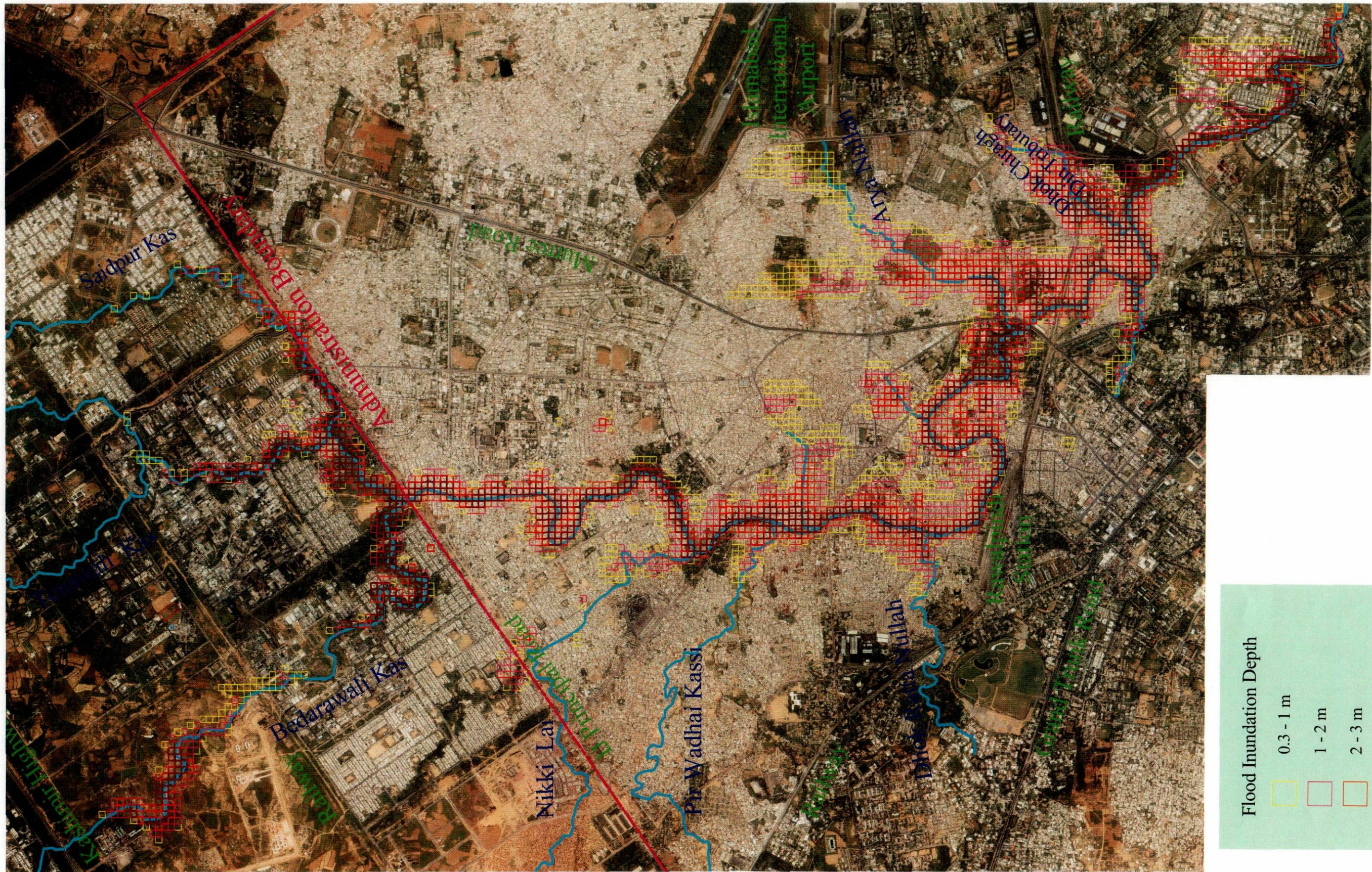


Fig. 24

Telecommunication Network for FFWS



THE STUDY ON COMPREHENSIVE FLOOD MITIGATION
AND ENVIRONMENTAL IMPROVEMENT PLAN
OF LAI NULLAH BASIN
IN THE ISLAMIC REPUBLIC OF PAKISTAN
JAPAN INTERNATIONAL COOPERATION AGENCY

Fig. 25
Flood Risk Map
(Flood Inundation Area by 23 July 2001 Flood
after ADB Lai Nullah Improvement Project)