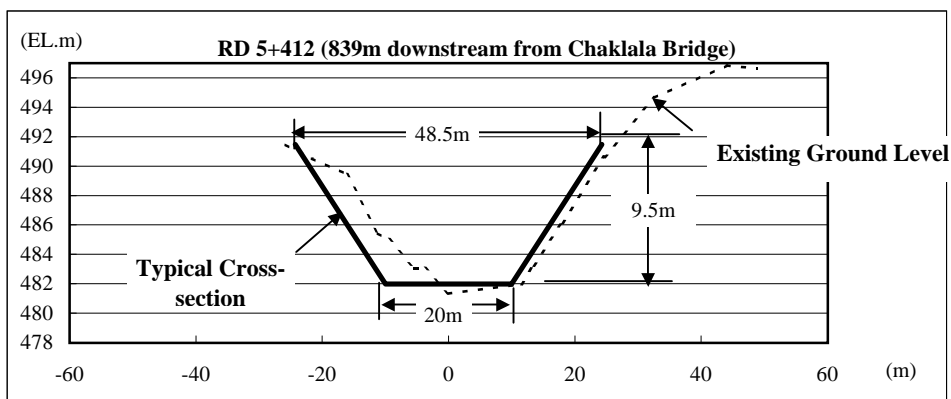
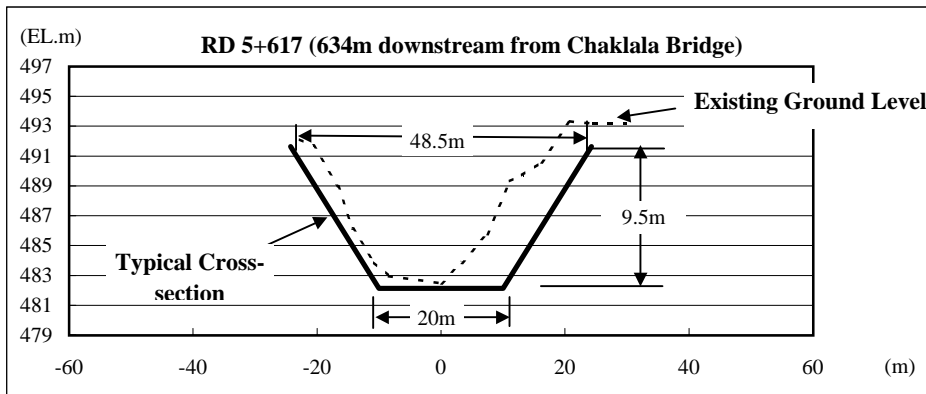
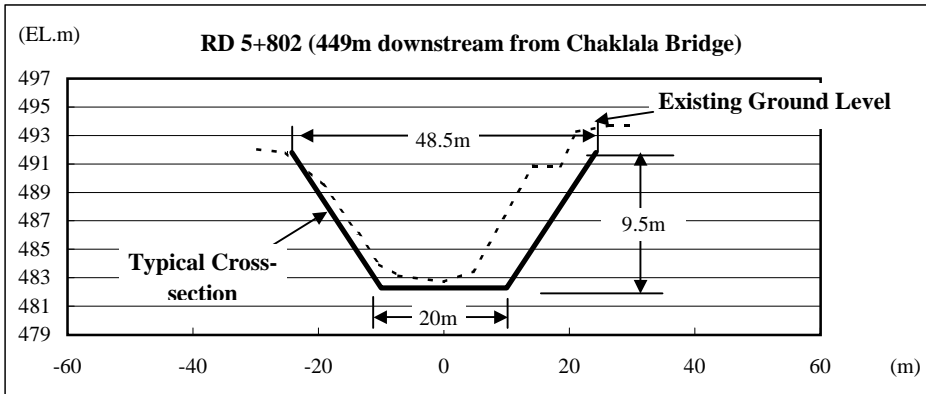
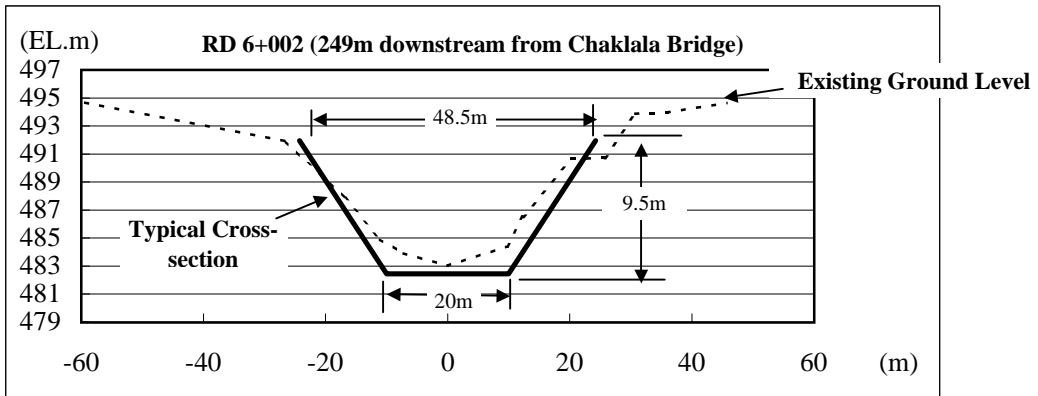


Note: Proposed section is subject to channel deepening for the on-going improvement section above Chaklala Bridge

THE STUDY ON COMPREHENSIVE FLOOD MITIGATION
AND ENVIRONMENTAL IMPROVEMENT PLAN
OF LAI NULLAH BASIN
IN THE ISLAMIC REPUBLIC OF PAKISTAN

Japan International Cooperation Agency

Fig. 11
Proposed Typical Cross-section below Chaklala
Bridge (In Case of Channel Deepening above
Chaklala Bridge)



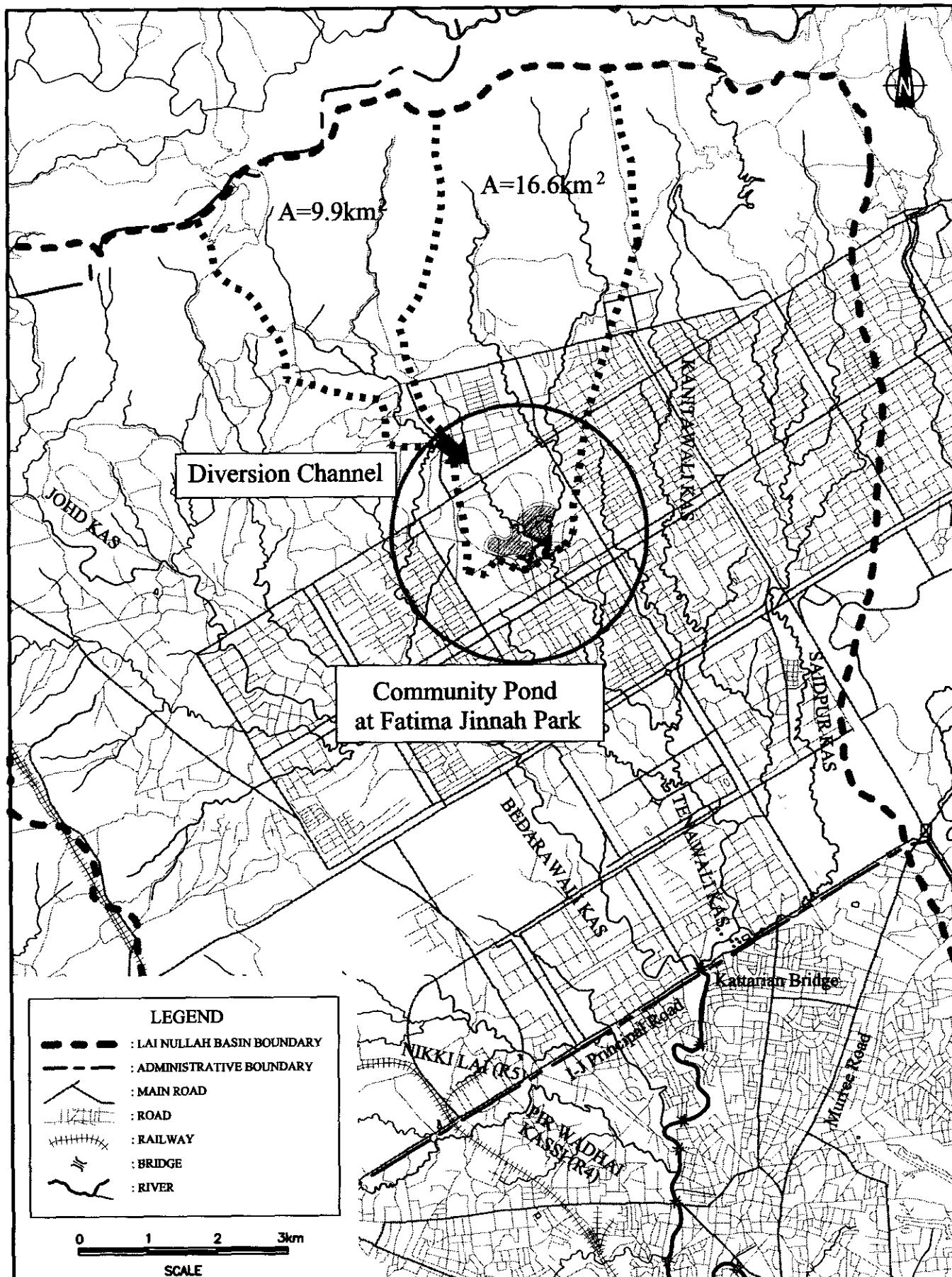
Note: Proposed section is subject to no channel deepening for the on-going improvement section above Chaklala Bridge

THE STUDY ON COMPREHENSIVE FLOOD MITIGATION
AND ENVIRONMENTAL IMPROVEMENT PLAN
OF LAI NULLAH BASIN
IN THE ISLAMIC REPUBLIC OF PAKISTAN

Japan International Cooperation Agency

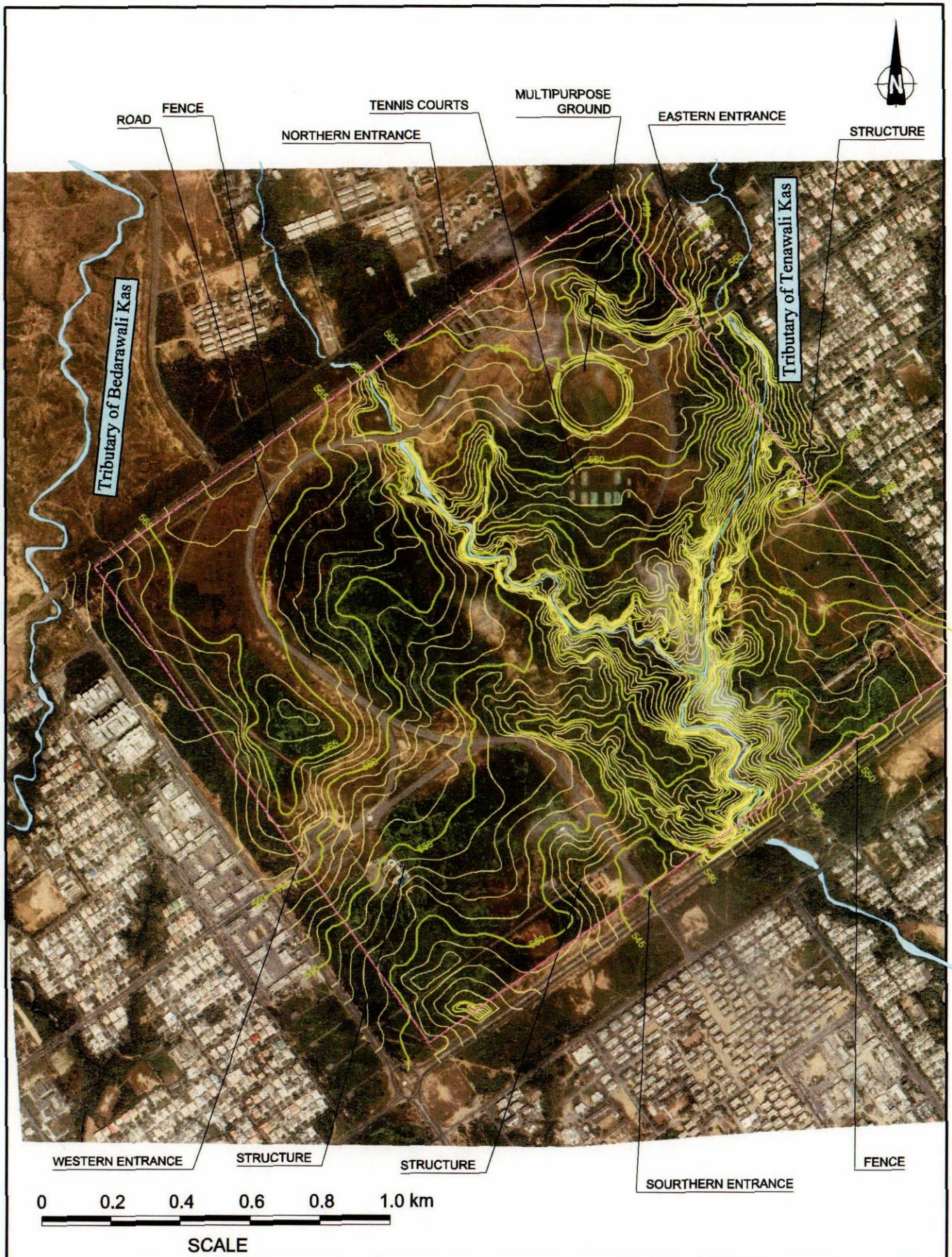
Fig. 12

Proposed Typical Cross-section below Chaklala
Bridge (In Case of Non-Channel Deepening above
Chaklala Bridge)



THE STUDY ON COMPREHENSIVE FLOOD MITIGATION
AND ENVIRONMENTAL IMPROVEMENT PLAN
OF LAI NULLAH BASIN
IN THE ISLAMIC REPUBLIC OF PAKISTAN
JAPAN INTERNATIONAL COOPERATION AGENCY

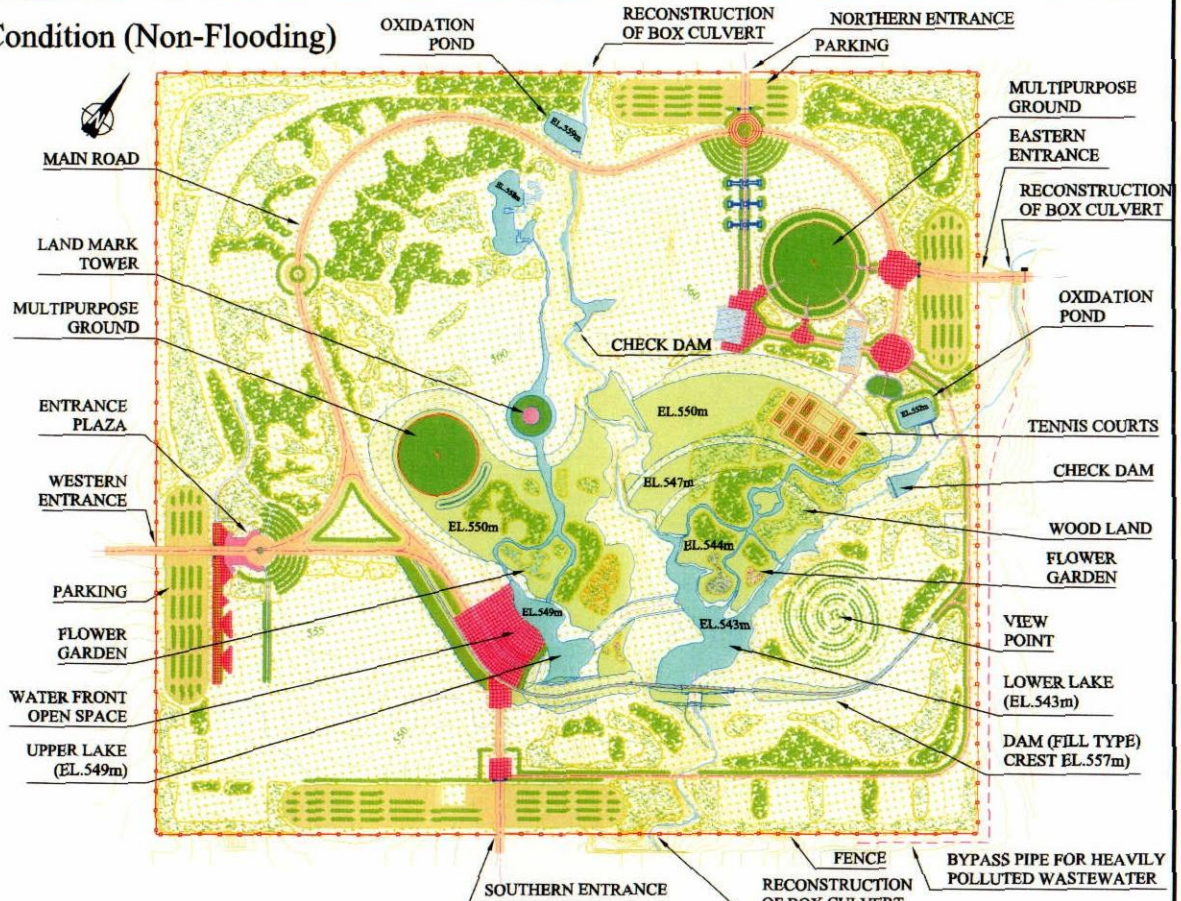
Fig. 13
Location of Community Pond proposed
at Fatima Jinnah Park



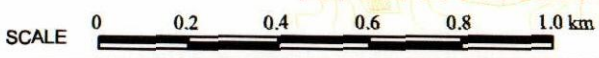
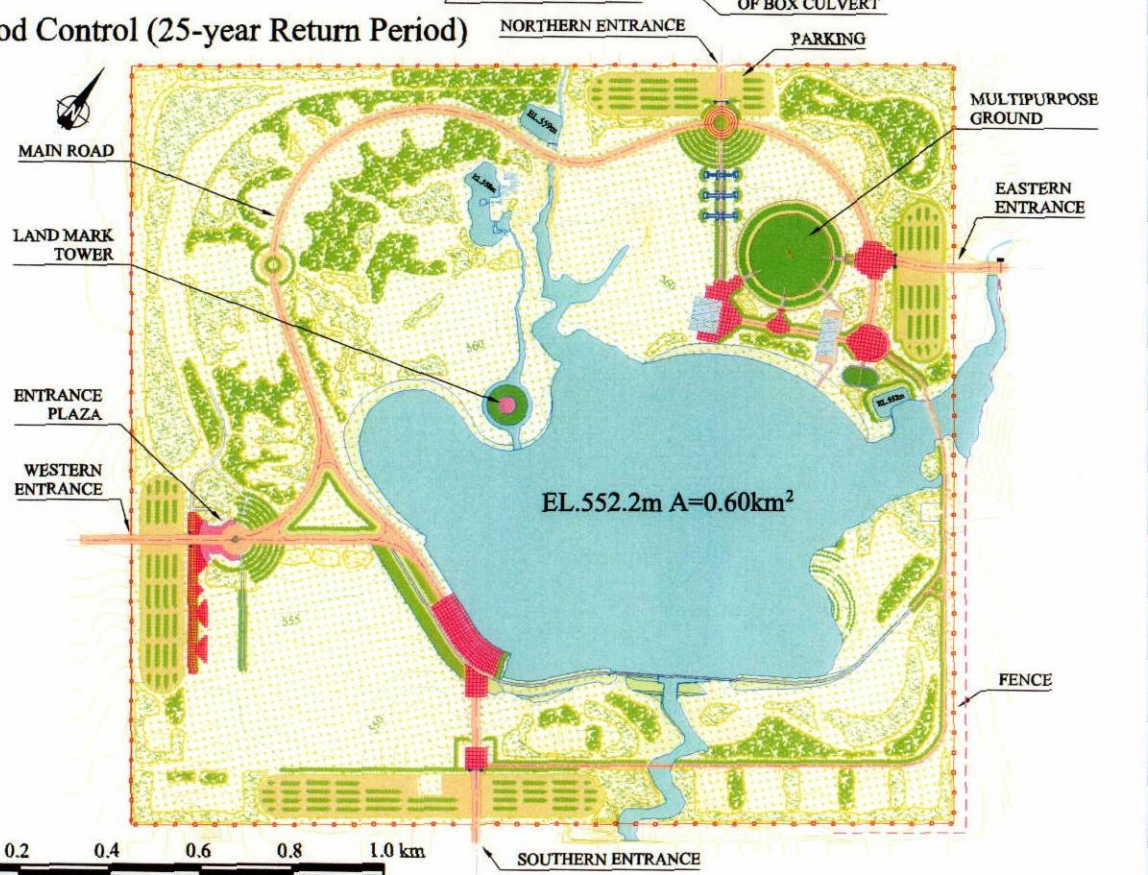
THE STUDY ON COMPREHENSIVE FLOOD MITIGATION
 AND ENVIRONMENTAL IMPROVEMENT PLAN
 OF LAI NULLAH BASIN
 IN THE ISLAMIC REPUBLIC OF PAKISTAN
 JAPAN INTERNATIONAL COOPERATION AGENCY

Fig. 14
 Existing Conditions of Fatima Jinnah Park

Normal Condition (Non-Flooding)



During Flood Control (25-year Return Period)



THE STUDY ON COMPREHENSIVE FLOOD MITIGATION
AND ENVIRONMENTAL IMPROVEMENT PLAN
OF LAI NULLAH BASIN
IN THE ISLAMIC REPUBLIC OF PAKISTAN
JAPAN INTERNATIONAL COOPERATION AGENCY

Fig. 15
Plan of Community Pond