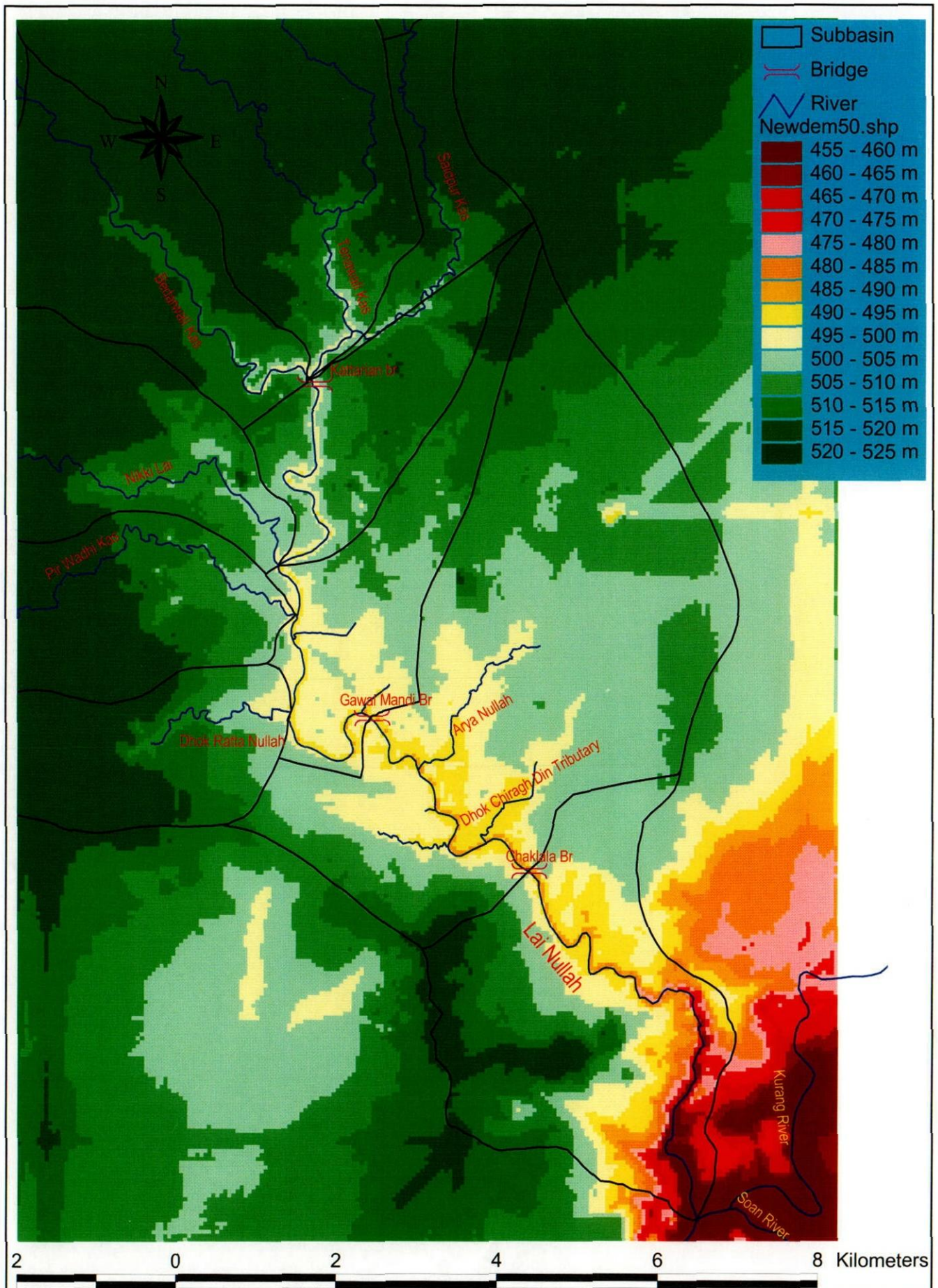


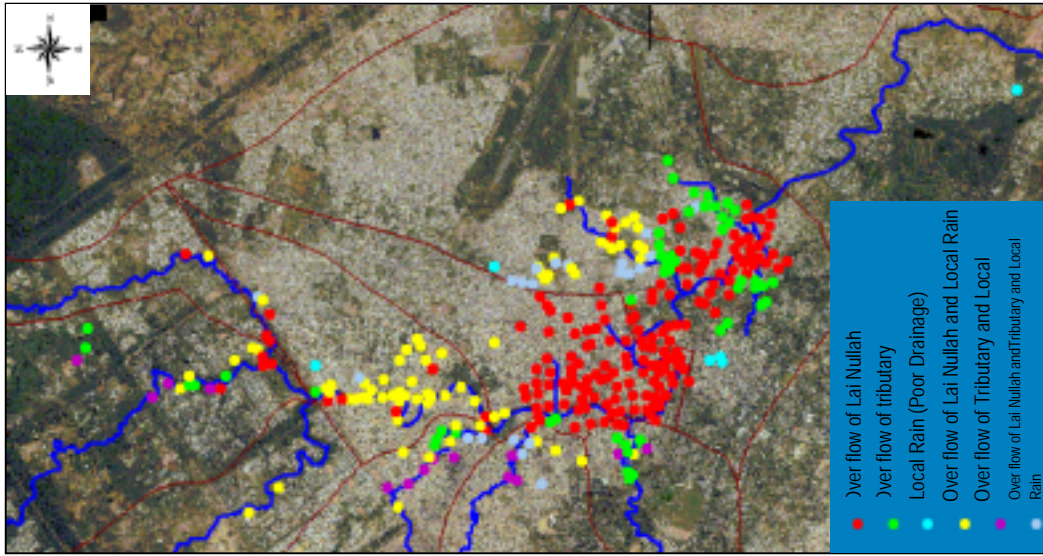
FIGURES AT THE BACK OF REPORT



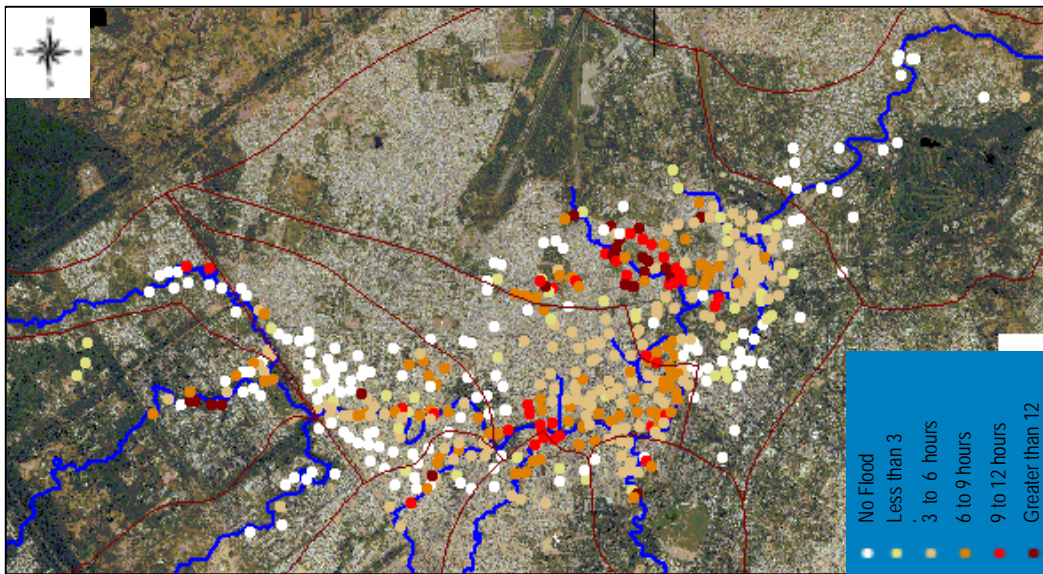
THE STUDY ON COMPREHENSIVE FLOOD MITIGATION
AND ENVIRONMENTAL IMPROVEMENT PLAN
OF LAI NULLAH BASIN
IN THE ISLAMIC REPUBLIC OF PAKISTAN

JAPAN INTERNATIONAL COOPERATION AGENCY

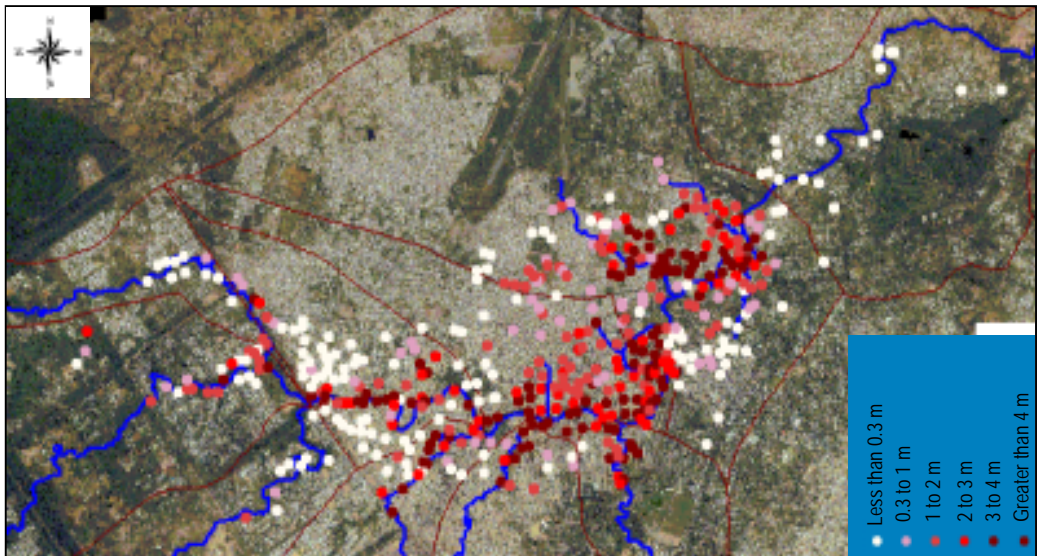
Fig. 1
Geography along Lai Nullah



**Causes Of Flood Inundation
During 2001 Flood**



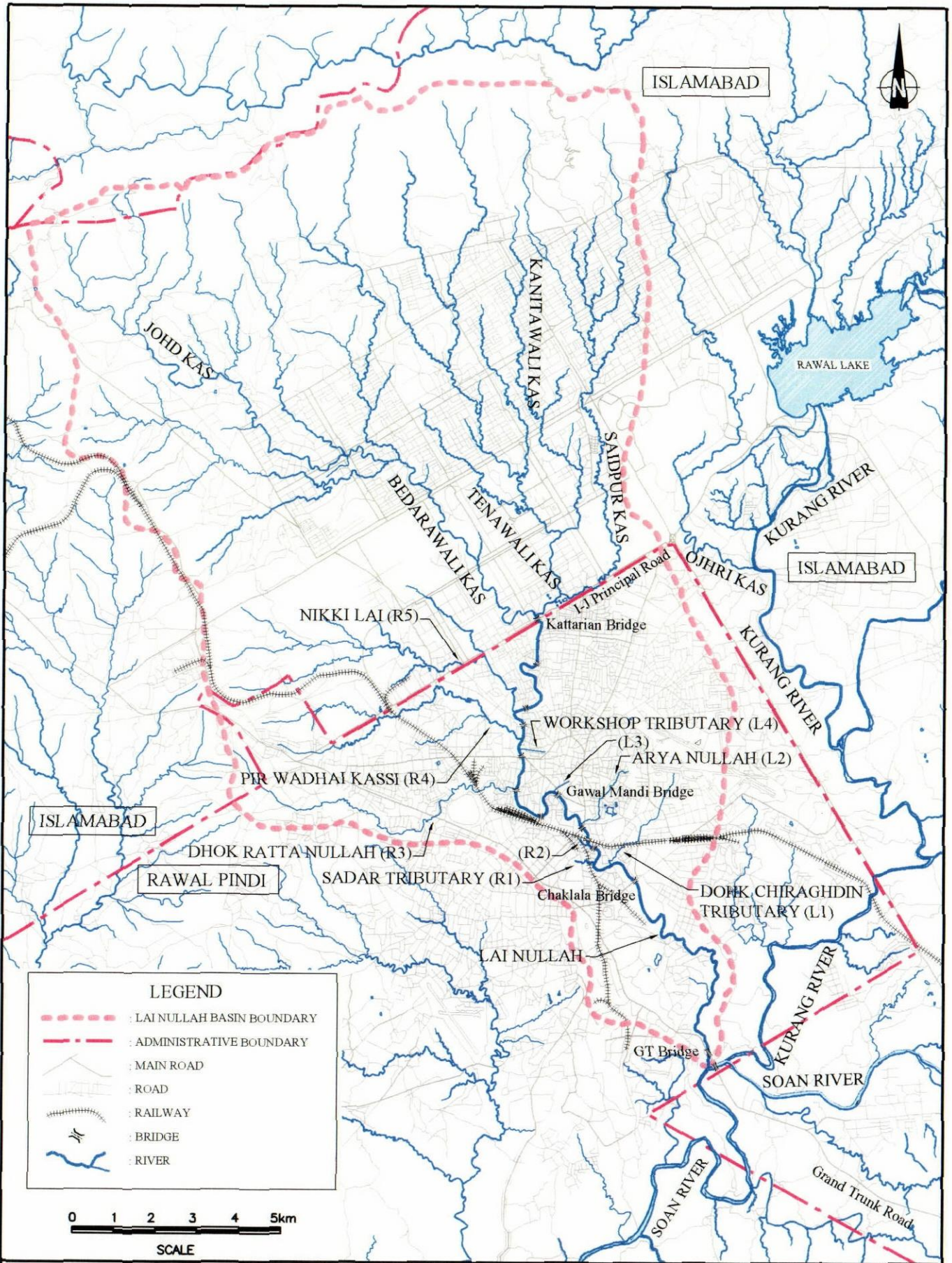
**Duration Of Flood Inundation
During 2001 Flood**



**Maximum Flood Inundation Depths
During 2001 Flood**



Fig. 2
Estimated Extent of Inundation in 2001 Flood



THE STUDY ON COMPREHENSIVE FLOOD MITIGATION AND ENVIRONMENTAL IMPROVEMENT PLAN OF LAI NULLAH BASIN IN THE ISLAMIC REPUBLIC OF PAKISTAN

Fig. 3
River System of Lai Nullah

JAPAN INTERNATIONAL COOPERATION AGENCY

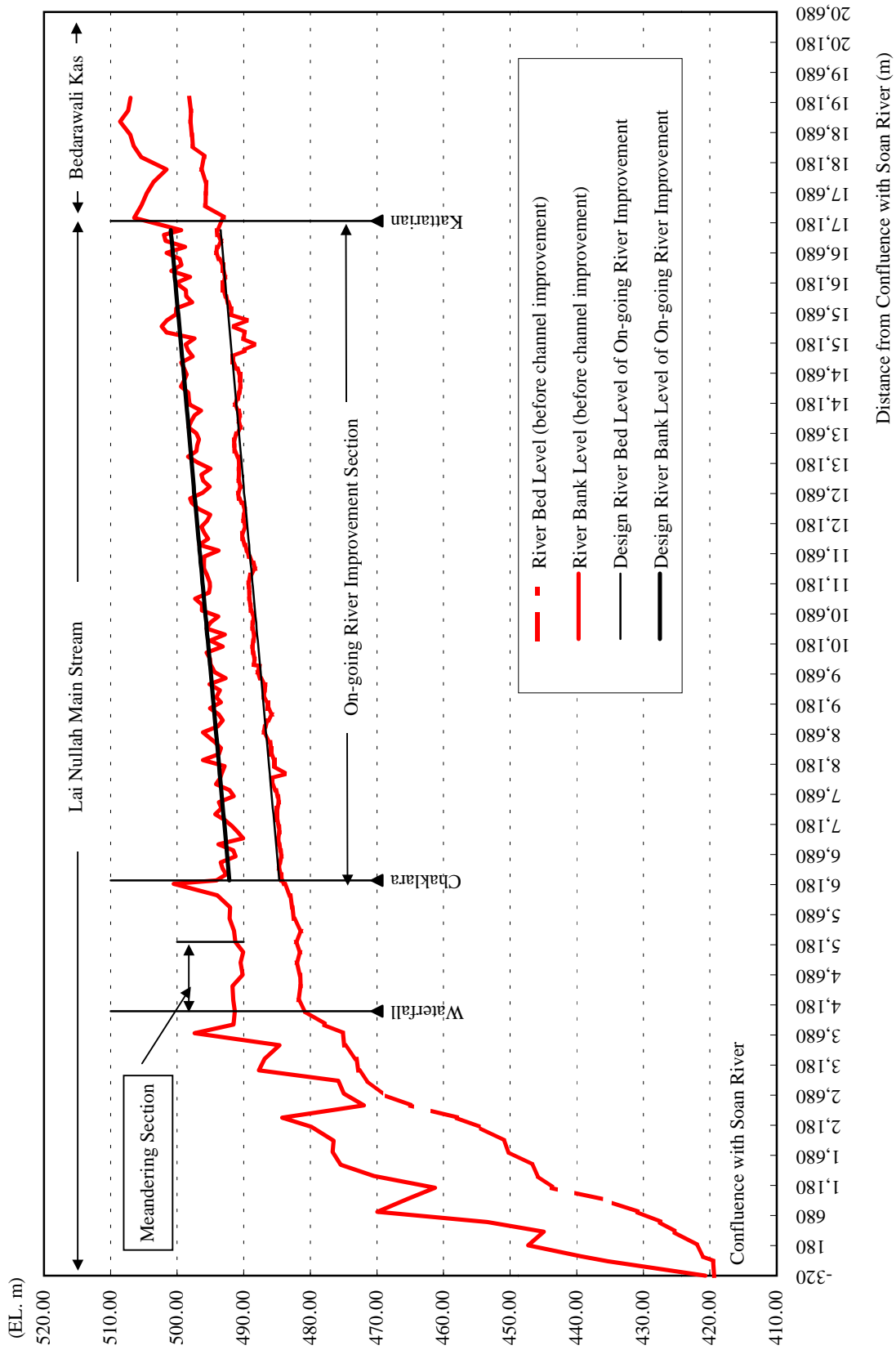
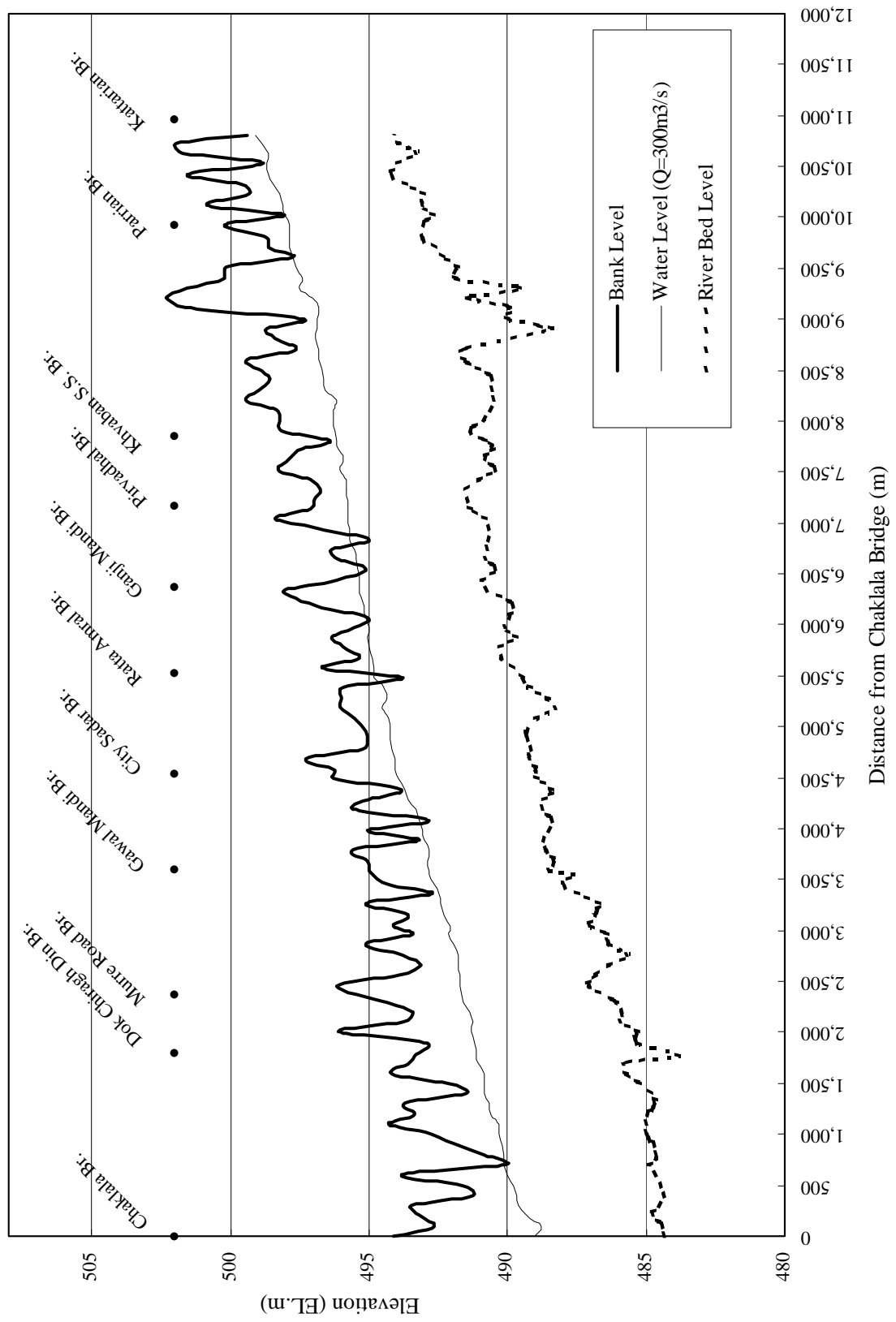


Fig. 4

Longitudinal Profile of Lai Nullah



THE STUDY ON COMPREHENSIVE FLOOD MITIGATION
AND ENVIRONMENTAL IMPROVEMENT PLAN
OF LAI NULLAH BASIN
IN THE ISLAMIC REPUBLIC OF PAKISTAN
JAPAN INTERNATIONAL COOPERATION AGENCY

Fig. 5
Longitudinal Profile of Lai Nullah before
On-going River Improvement