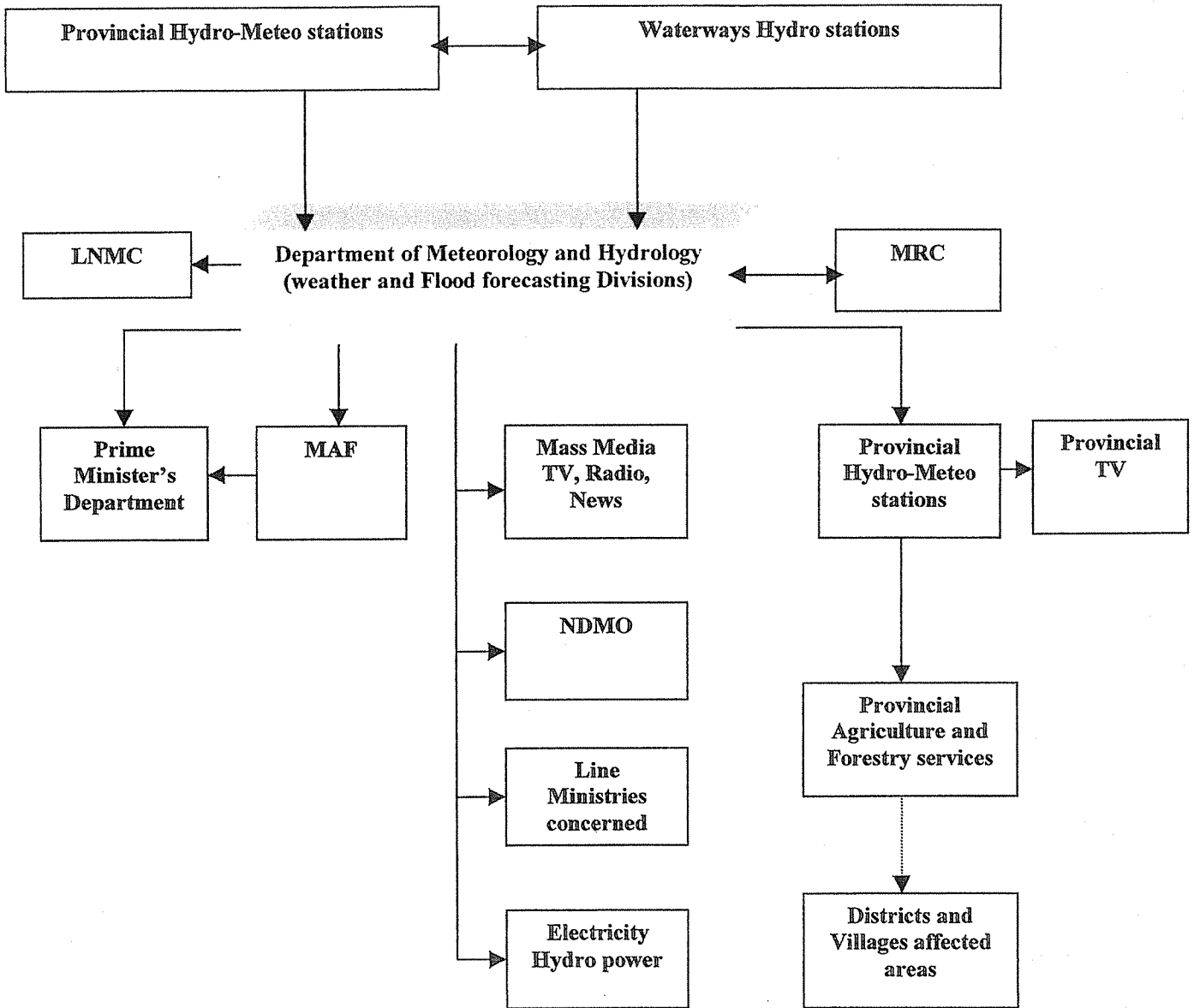


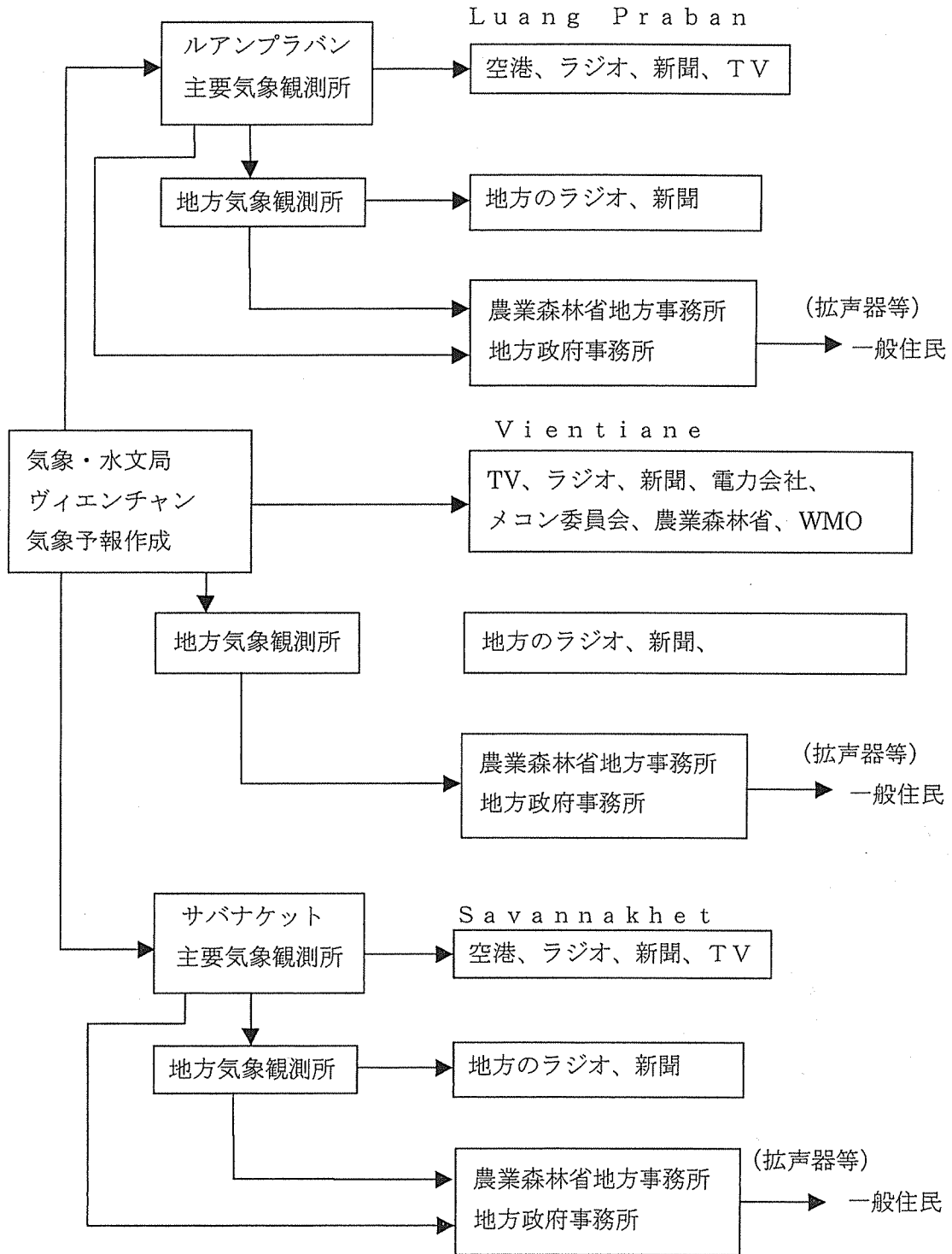
Organizational structure for disseminating of weather and flood forecasts and warning in Lao PDR.



Remark:▶ - Lack of Telecommunication system

LNMC: Lao National Mekong Committee
MRC: Mekong River Committee
MAF: Ministry of Agriculture and Forestry
NDMO: National Disasters Management Organization

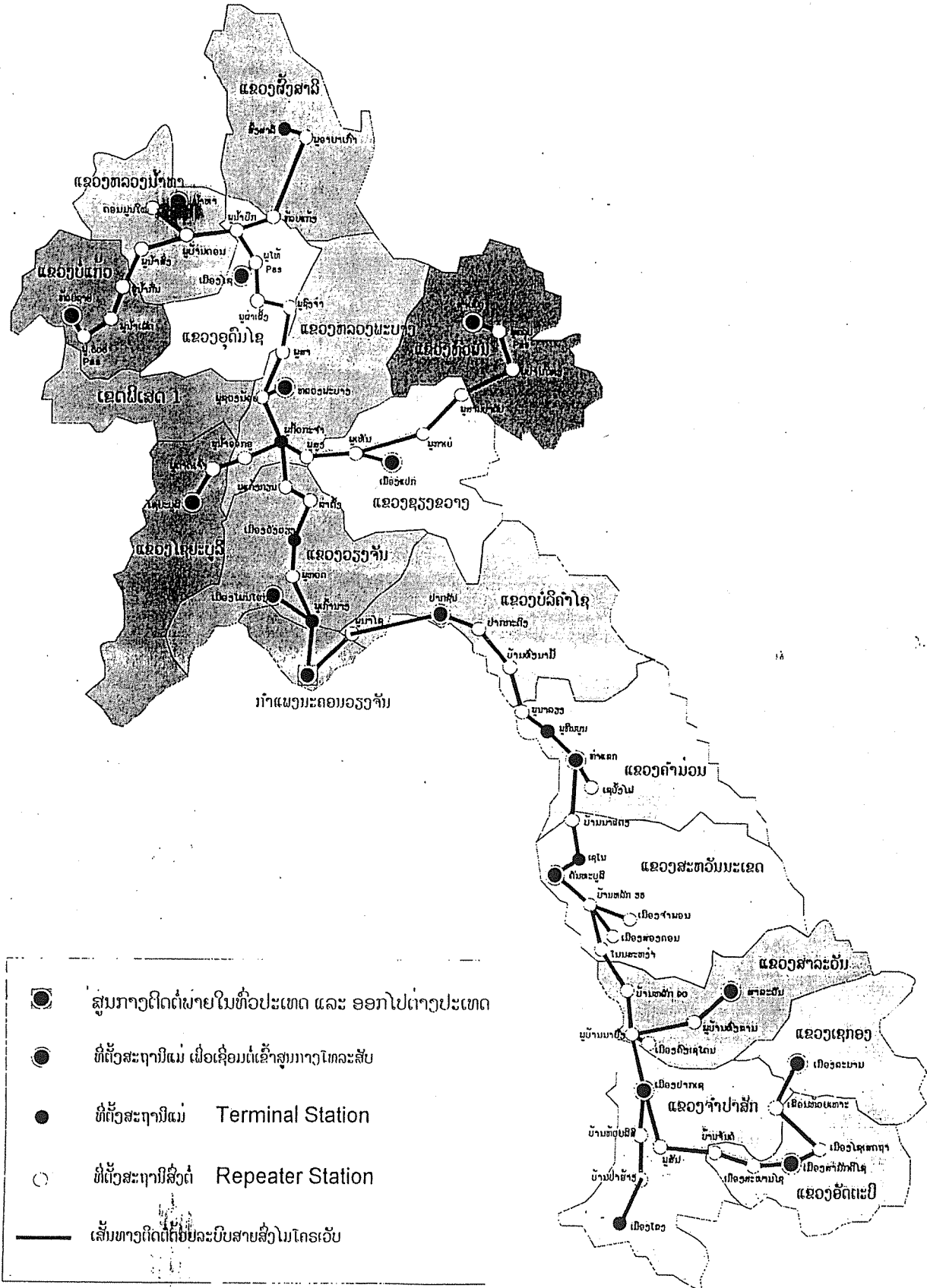
【気象予報の流れ】



ລັດວິສາຫະກິດປະສົມ ລາວໂທລະຄົມມະນາຄົມ

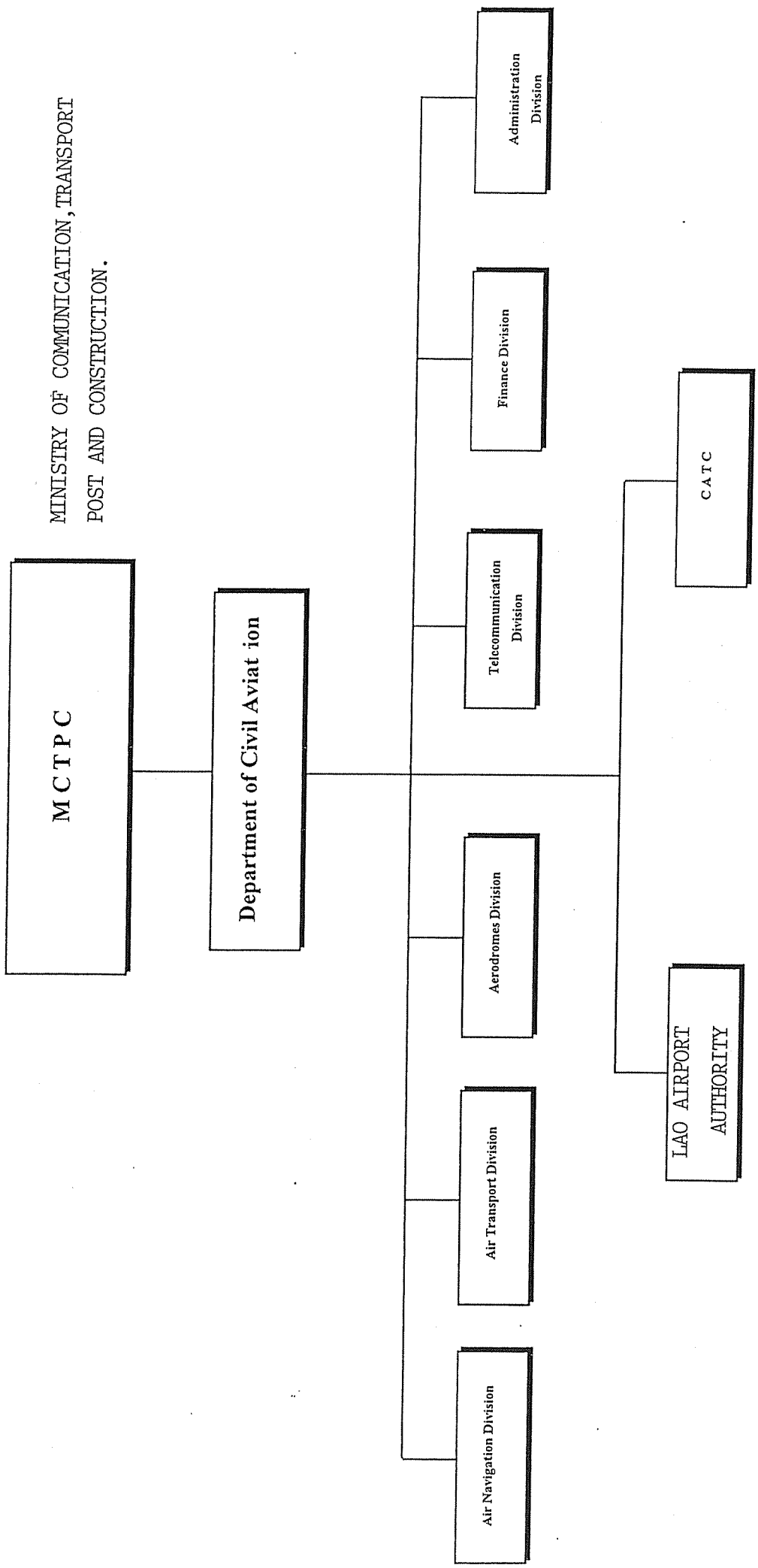
ການສື່ສານດ້ານໂທລະຄົມໂດຍຜ່ານລະບົບສາຍສົ່ງ ໄມໂຄຣເວັບ

ຫລື ເສັ້ນທາງກະດູກສັນຫລັງແຕ່ເໜືອຕະຫລອດໃຕ້ ຂອງປະເທດ



添付資料 3-11 ラオスマイクロ回線網

MINISTRY OF COMMUNICATION, TRANSPORT
POST AND CONSTRUCTION.

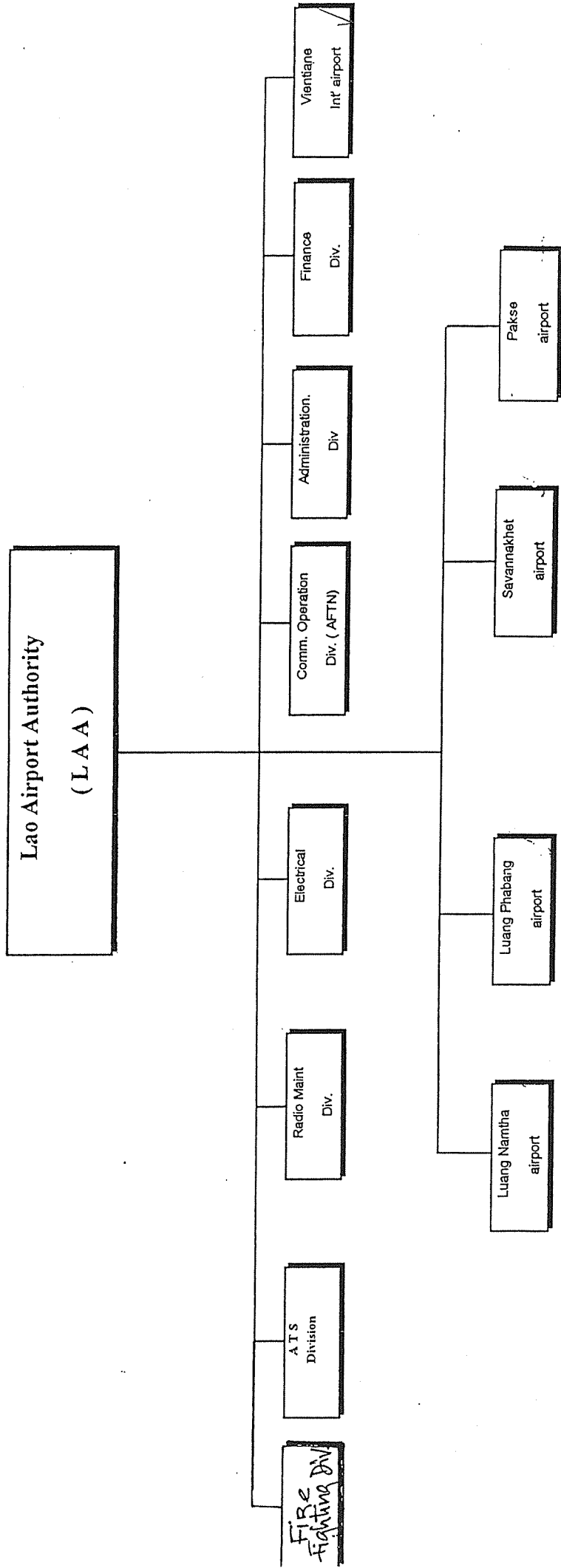


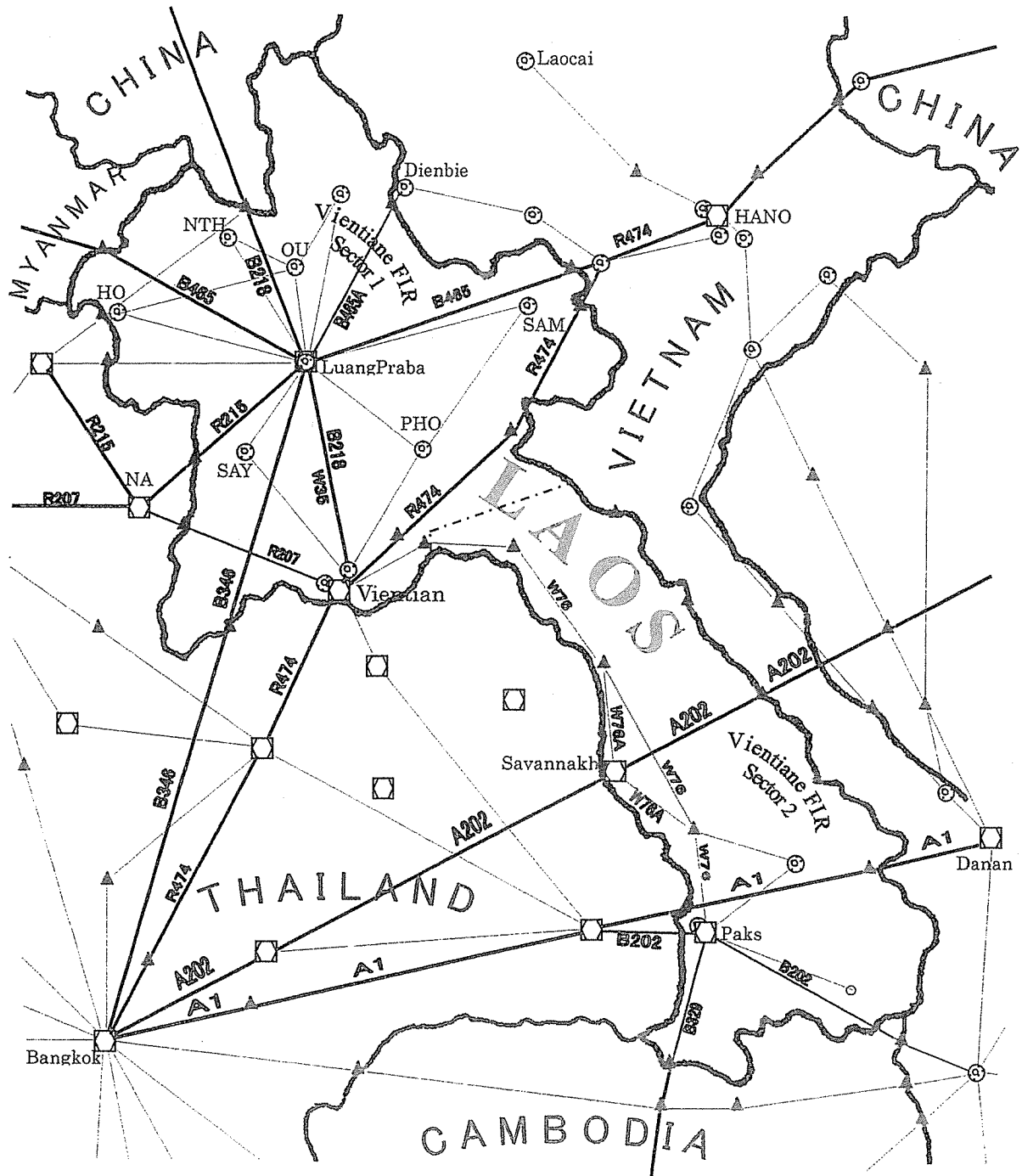
添付資料 4-1 DCA 組織図

Ministry of Comm, Transport, Post & Construction.

Lao Airport Authority

ORGANIZATION CHART OF THE AIRPORT AUTHORITY





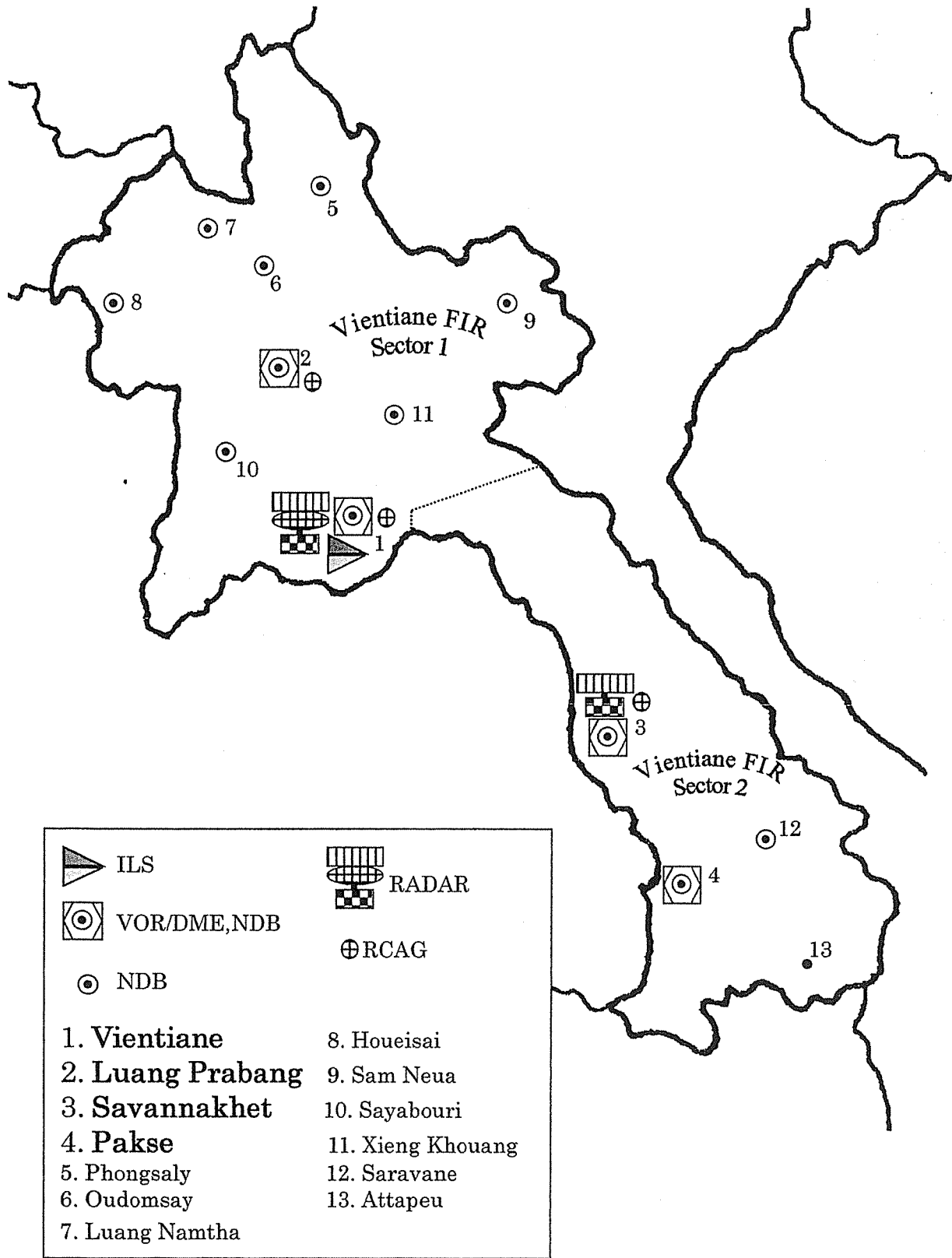
□ VOR/DME

⊙ NDB

▲ Reporting Point

International Air Route

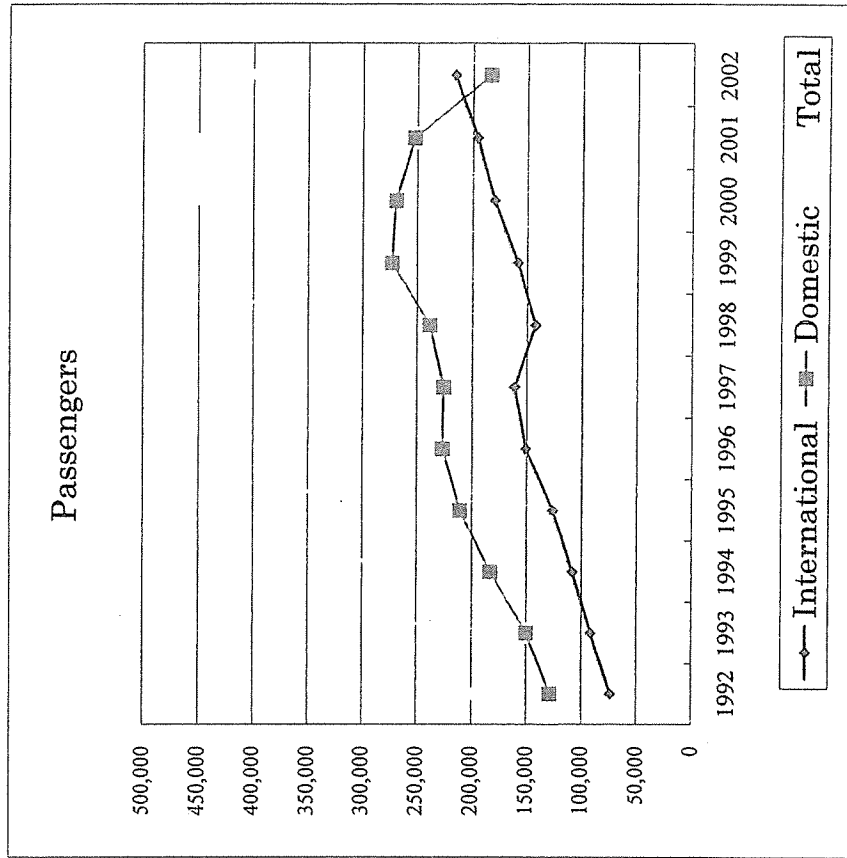
添付資料 4-3 ラオス航空路図



Communication, Navigation, Surveillance systems

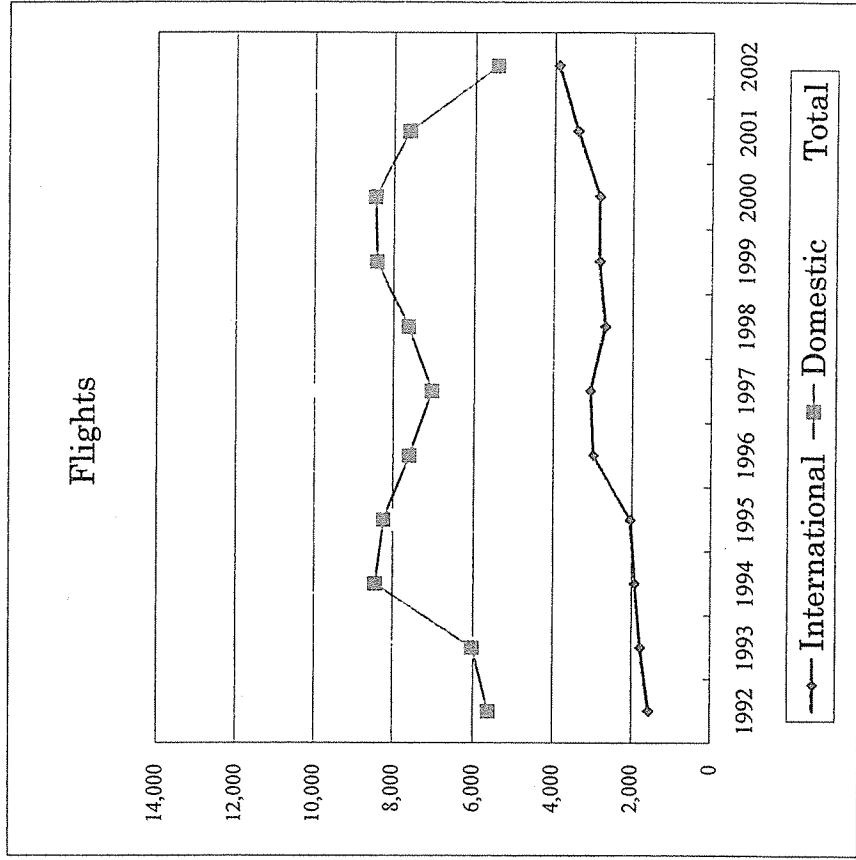
添付資料 4-4 ラオスの空港と施設位置図

Number of Passengers (Wattay International Airport)



Year	Inter'l	Rate	Domestic	Rate	Total	Rate
1992	74,166		128,736		202,902	
1993	91,624	23.5%	150,670	17.0%	242,294	19.4%
1994	108,405	18.3%	183,148	21.6%	291,553	20.3%
1995	126,414	16.6%	210,935	15.2%	337,349	15.7%
1996	151,520	19.9%	227,127	7.7%	378,647	12.2%
1997	162,067	7.0%	225,934	-0.5%	388,001	2.5%
1998	142,556	-12.0%	238,559	5.6%	381,115	-1.8%
1999	159,005	11.5%	273,366	14.6%	432,371	13.4%
2000	180,193	13.3%	269,742	-1.3%	449,935	4.1%
2001	196,108	8.8%	252,938	-6.2%	449,046	-0.2%
2002	216,060	10.2%	183,787	-27.3%	399,847	-11.0%

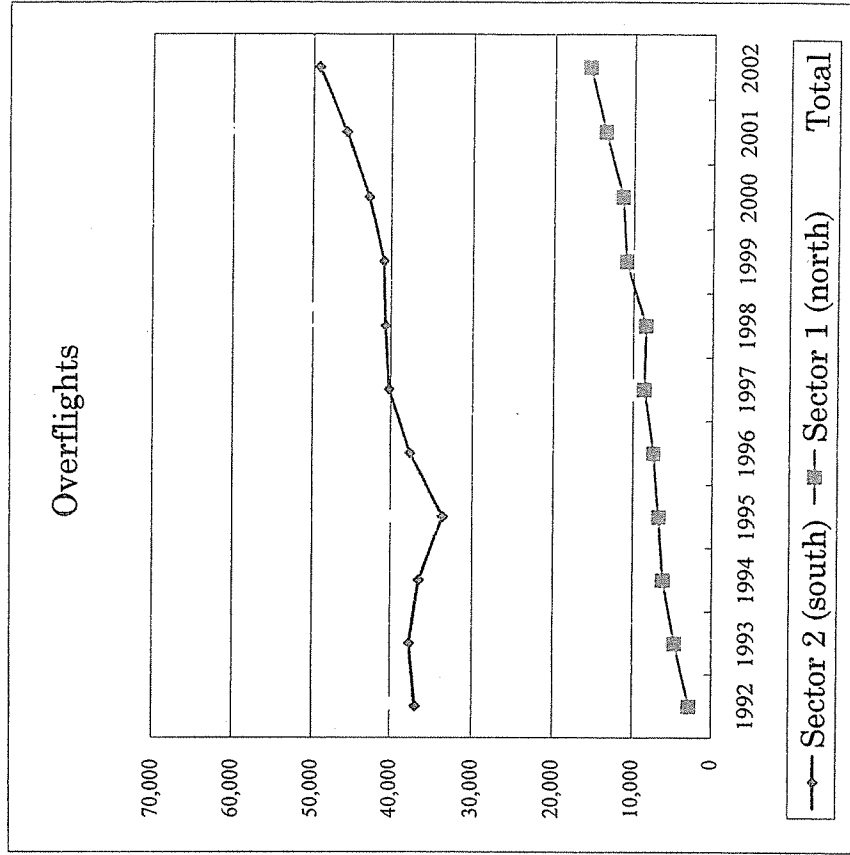
Number of Flights (Wattay International Airport)



Flights

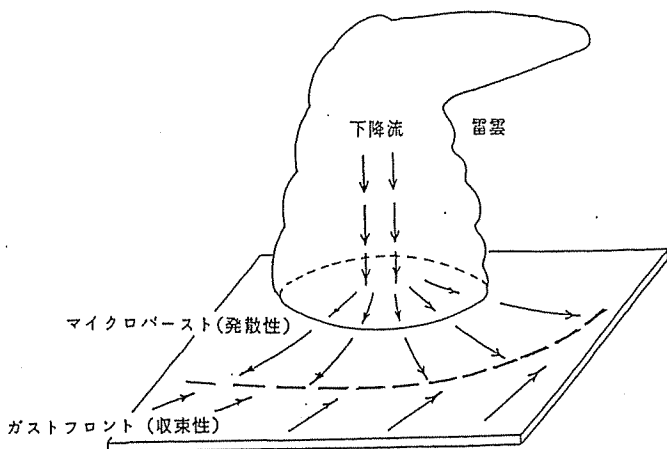
Year	Inter'l	Rate	Domestic	Rate	Total	Rate
1992	1,564		5,616		7,180	
1993	1,778	13.7%	6,029	7.4%	7,807	8.7%
1994	1,932	8.7%	8,451	40.2%	10,383	33.0%
1995	2,054	6.3%	8,236	-2.5%	10,290	-0.9%
1996	2,995	45.8%	7,605	-7.7%	10,600	3.0%
1997	3,071	2.5%	7,043	-7.4%	10,114	-4.6%
1998	2,701	-12.0%	7,626	8.3%	10,327	2.1%
1999	2,854	5.7%	8,425	10.5%	11,279	9.2%
2000	2,855	0.0%	8,464	0.5%	11,319	0.4%
2001	3,410	19.4%	7,624	-9.9%	11,034	-2.5%
2002	3,897	14.3%	5,433	-28.7%	9,330	-15.4%

Number of Over Flying Traffic in Vientiane FIR

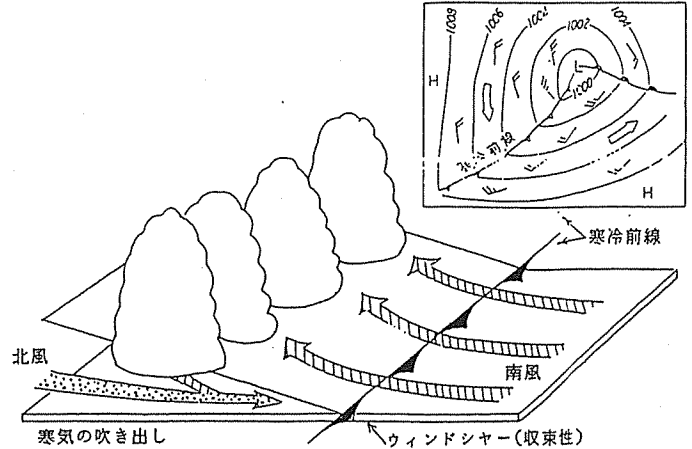


Overflights

Year	Sector 2	Rate	Sector 1	Rate	Total	Rate
1992	36,915	#REF!	2,878	#REF!	39,793	#REF!
1993	37,630	1.9%	4,701	63.3%	42,331	6.4%
1994	36,503	-3.0%	6,191	31.7%	42,694	0.9%
1995	33,610	-7.9%	6,750	9.0%	40,360	-5.5%
1996	37,643	12.0%	7,461	10.5%	45,104	11.8%
1997	40,259	6.9%	8,665	16.1%	48,924	8.5%
1998	40,725	1.2%	8,464	-2.3%	49,189	0.5%
1999	40,984	0.6%	10,977	29.7%	51,961	5.6%
2000	42,883	4.6%	11,454	4.3%	54,337	4.6%
2001	45,773	6.7%	13,700	19.6%	59,473	9.5%
2002	49,284	7.7%	15,660	14.3%	64,944	9.2%

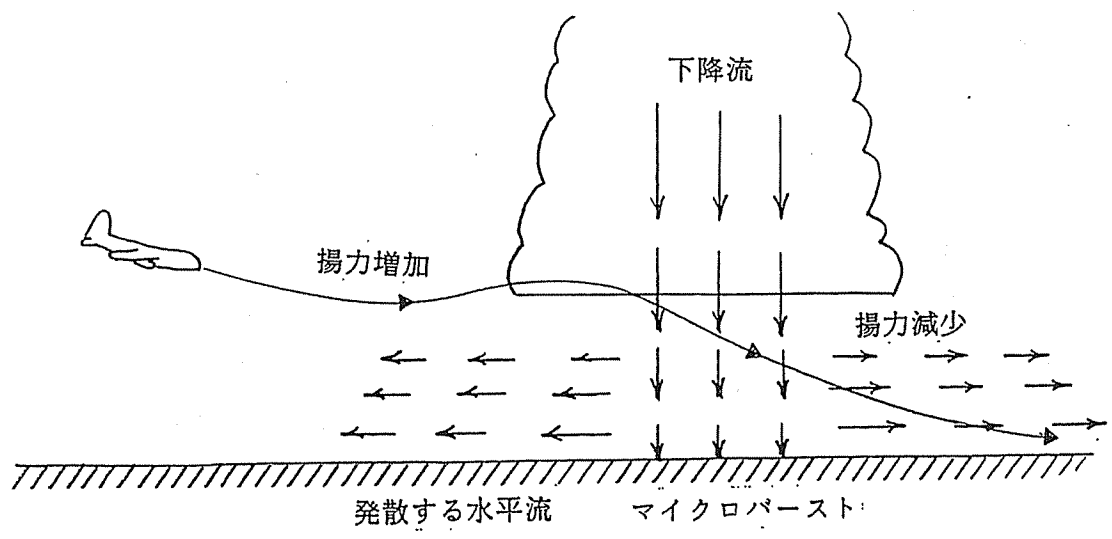


マイクロバーストとガストフロント



寒冷前線とウィンドシヤー

ウィンドシヤーの発生状況



マイクロバーストと航空機の飛行

