

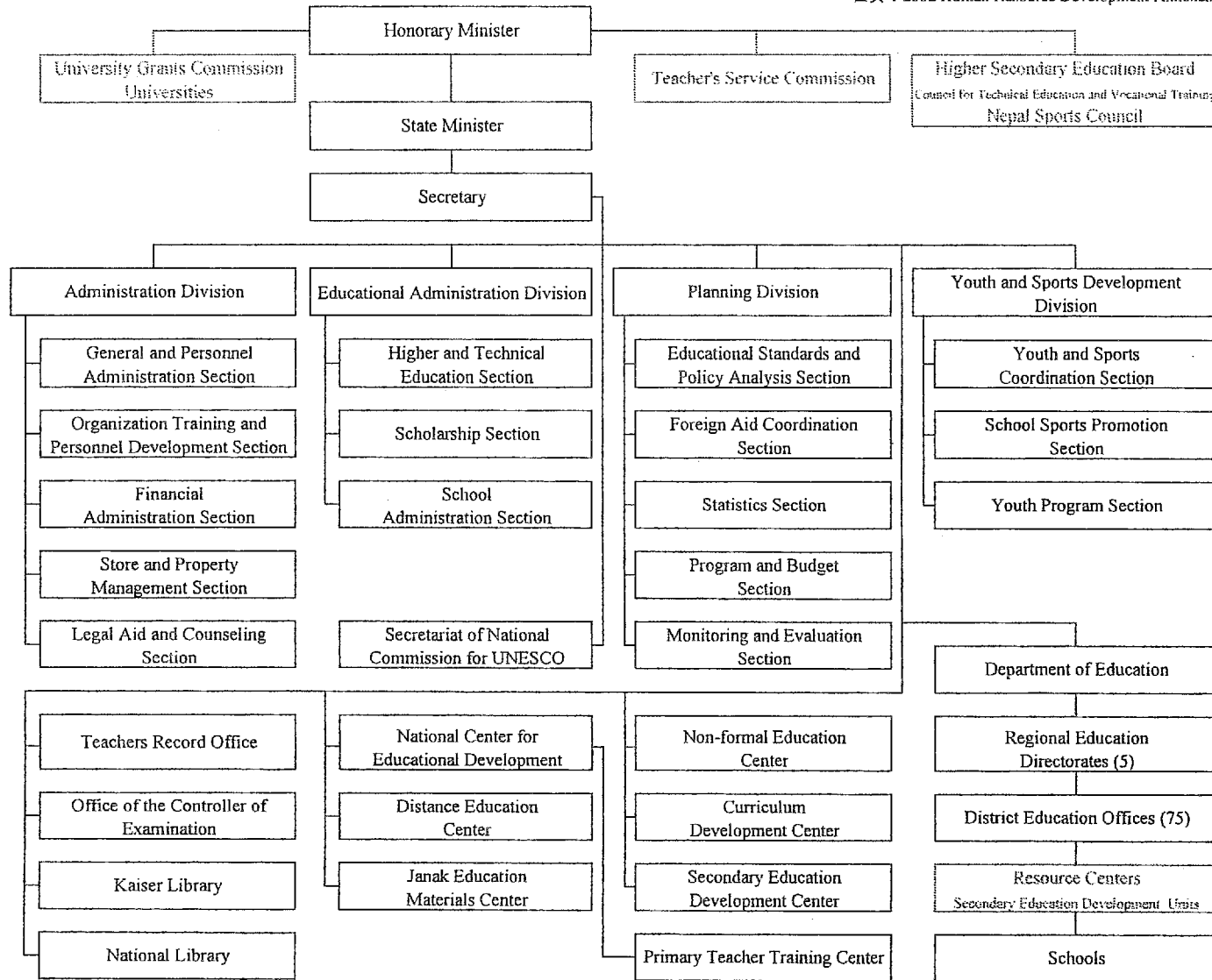
## 付 属 資 料

- 1．関係機関組織図
- 2．教育分野統計資料
- 3．識字／ジェンダー／母国語／人間開発指数（HDI）別地図
- 4．参考資料リスト



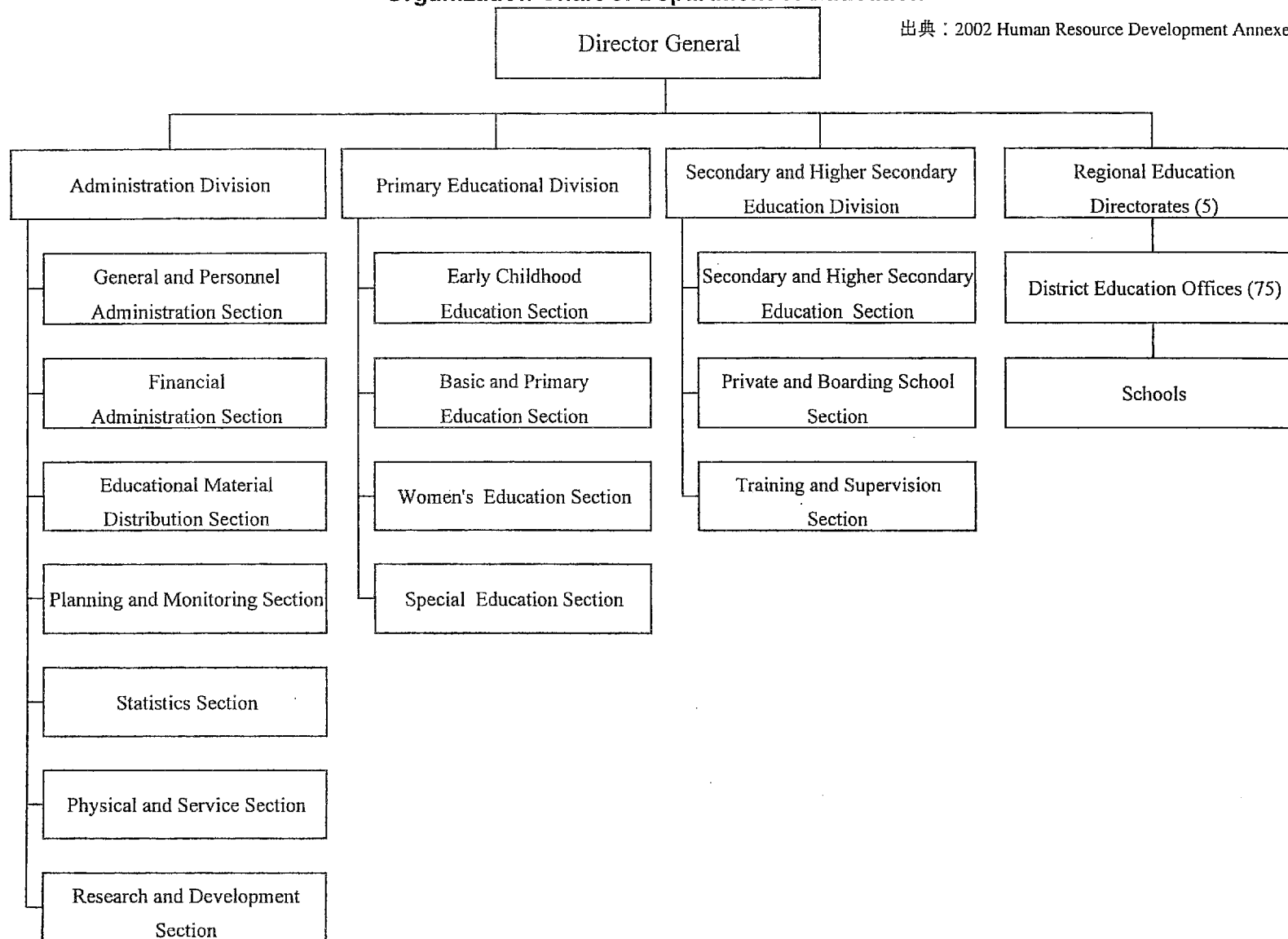
### Organization Chart of the Ministry of Education and Sports

出典：2002 Human Resource Development Annexes



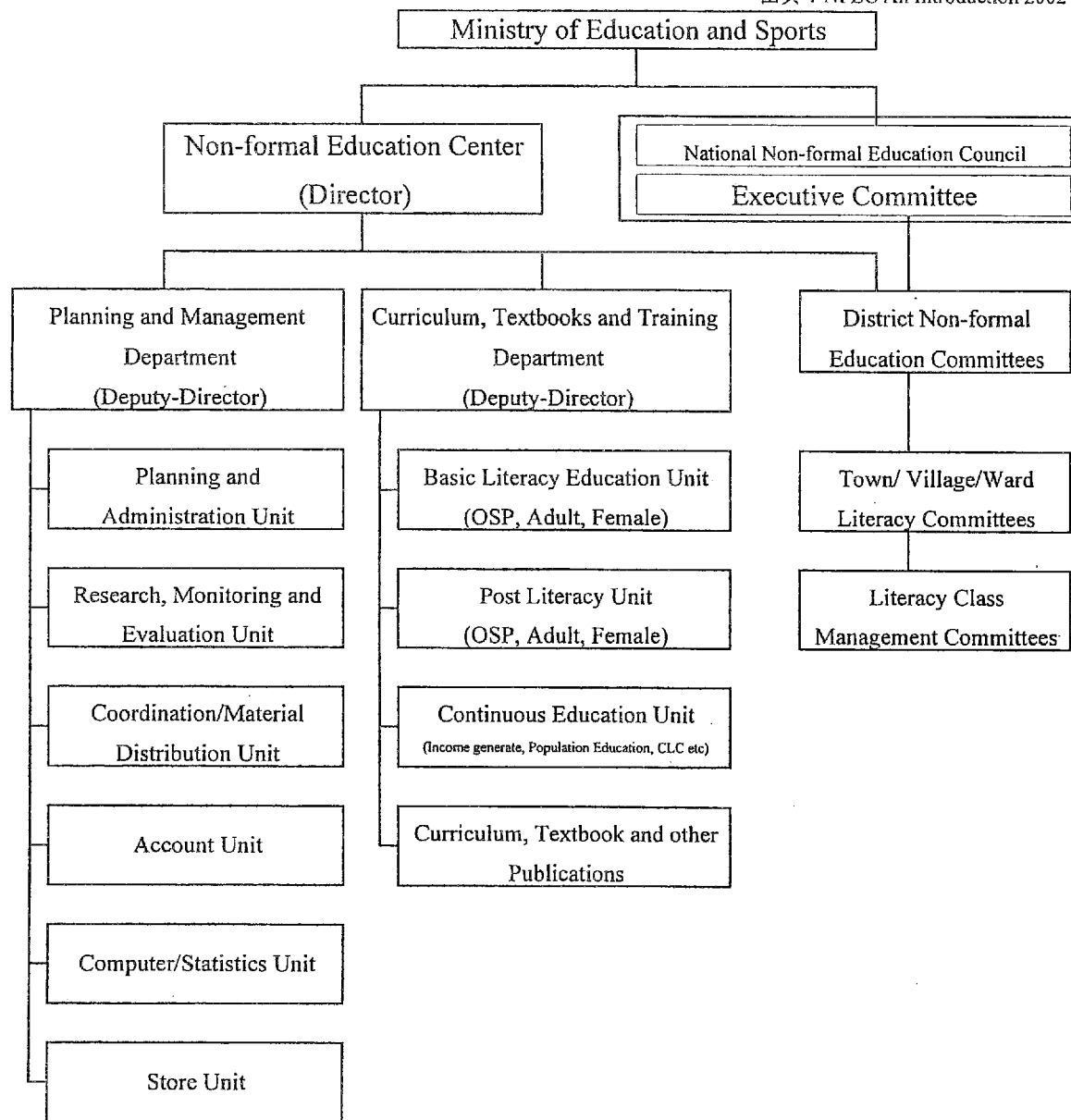
### Organization Chart of Department of Education

出典：2002 Human Resource Development Annexes



### Organization Chart of Non-formal Education Center

出典：NFEC An Introduction 2002



## 2. 教育分野統計資料

### 2-1. 教育基礎統計 1

#### EDUCATIONAL STATISTICS OF NEPAL AT A GLANCE 2000(2057)

		PRE PRIMARY	PRIMARY (1-5)	LOWER SECONDARY (6-8)	SECONDARY (9-10)	TOTAL* (1-10)
<b>TOTAL</b>						
Schools		4038	25827	7289	4350	26036
Enrolments	Total	257968	3623150	957446	372914	4953510
	Girls	110181	1597570	397503	151444	2146517
	Girls(%)	42.7%	44.1%	41.5%	40.6%	43.3%
	Boys	147807	2025580	559943	221470	2806993
Teachers	Total	11785	97879	25375	19498	142752
	Total trained		50697	10268	11012	71977
	Total trained(%)		51.8%	40.5%	56.5%	50.4%
	Female	4231	24770	3051	1490	29311
	Female(%)	35.9%	25.3%	12.0%	7.6%	20.5%
	Female trained		10154	1137	807	12098
	Female trained(%)		41.0%	37.3%	54.2%	41.3%
<b>PUBLIC</b>						
Schools		1748	20844	3886	2101	
Enrolments	Total	26202	3310340	716509	264293	4291142
	Girls	11975	1471199	297579	108371	1877149
	Girls(%)	45.7%	44.4%	41.5%	41.0%	43.7%
	Boys	14227	1839141	418930	155922	2413993
Teachers	Total	5204	78412	16411	12897	107720
	Total trained		48250	8156	8560	64966
	Total trained(%)		61.5%	49.7%	66.4%	60.3%
	Female	1763	16733	1566	816	19115
	Female(%)	33.9%	21.3%	9.5%	6.3%	20.5%
	Female trained		9048	758	543	10349
	Female trained(%)		54.1%	48.4%	66.5%	54.1%
<b>COMMUNITY</b>						
Schools		581	3119	2625	1205	
Enrolments	Total	15367	74889	145961	66031	286681
	Girls	6863	33693	61518	26446	121657
	Girls(%)	44.7%	45.1%	42.1%	40.1%	42.4%
	Boys	8504	40996	84443	39585	165024
Teachers	Total	636	4648	1937	820	7405
	Total trained		322	454	290	1068
	Total trained(%)		6.9%	23.4%	35.4%	14.4%
	Female	139	1281	154	41	1476
	Female(%)	21.9%	27.6%	8.0%	5.0%	20.5%
	Female trained		86	44	16	146
	Female trained(%)		6.7%	28.6%	39.0%	9.9%
<b>PRIVATE</b>						
Schools		2508	2906	1485	1081	
Enrolments	Total	216399	238121	94976	42590	375687
	Girls	91323	92678	38406	16627	147711
	Girls(%)	42.2%	38.9%	40.4%	39.0%	39.3%
	Boys	125076	145443	56570	25963	227976
Teachers	Total	5945	14819	7027	5781	27627
	Total trained		2125	1658	2162	5945
	Total trained(%)		14.3%	23.6%	37.4%	21.5%
	Female	2329	6756	1331	633	8720
	Female(%)	39.2%	45.6%	18.9%	10.9%	20.5%
	Female trained		1020	335	248	1603
	Female trained(%)		15.1%	25.2%	39.2%	18.4%
<b>RATIOS OF TOTAL SCHOOL STUDENT AND TEACHER</b>						
Student / School		63.9	139.7	131.4	85.8	190.3
Teacher / School		2.9	3.8	3.5	4.5	5.5
Student / Teacher		21.9	37.0	37.7	19.1	34.7
Student / Tr. Teacher			71.5	93.2	33.9	68.8
Female Teacher / School		1.0	1.0	0.4	0.3	1.1
<b>AGE GROUP POPULATION</b>						
		(3-5)	(6-10)	(11-13)	(14-15)	(3-15)
Total		1983496	3024946	1641238	1006511	5672695
Female		964241	1474323	809894	507991	2762208
Male		1019255	1550623	831344	498520	2860487
<b>AGE GROUP POPULATION</b>						
Total		13.0	119.8	56.3	37.1	87.3
Girls		11.4	108.4	49.1	29.8	78.9
Boys		14.5	130.6	67.4	44.4	97.4
<b>AGE GROUP POPULATION</b>						
Total		8.9	80.4	33.3	20.0	56.1
Girls		7.9	74.6	27.9	16.0	50.4
Boys		9.9	86.0	38.6	24.1	61.6

\*Excluding Pre-Primary Level

出典 : The Summary of Statistical Information of Education in Nepal (2000)

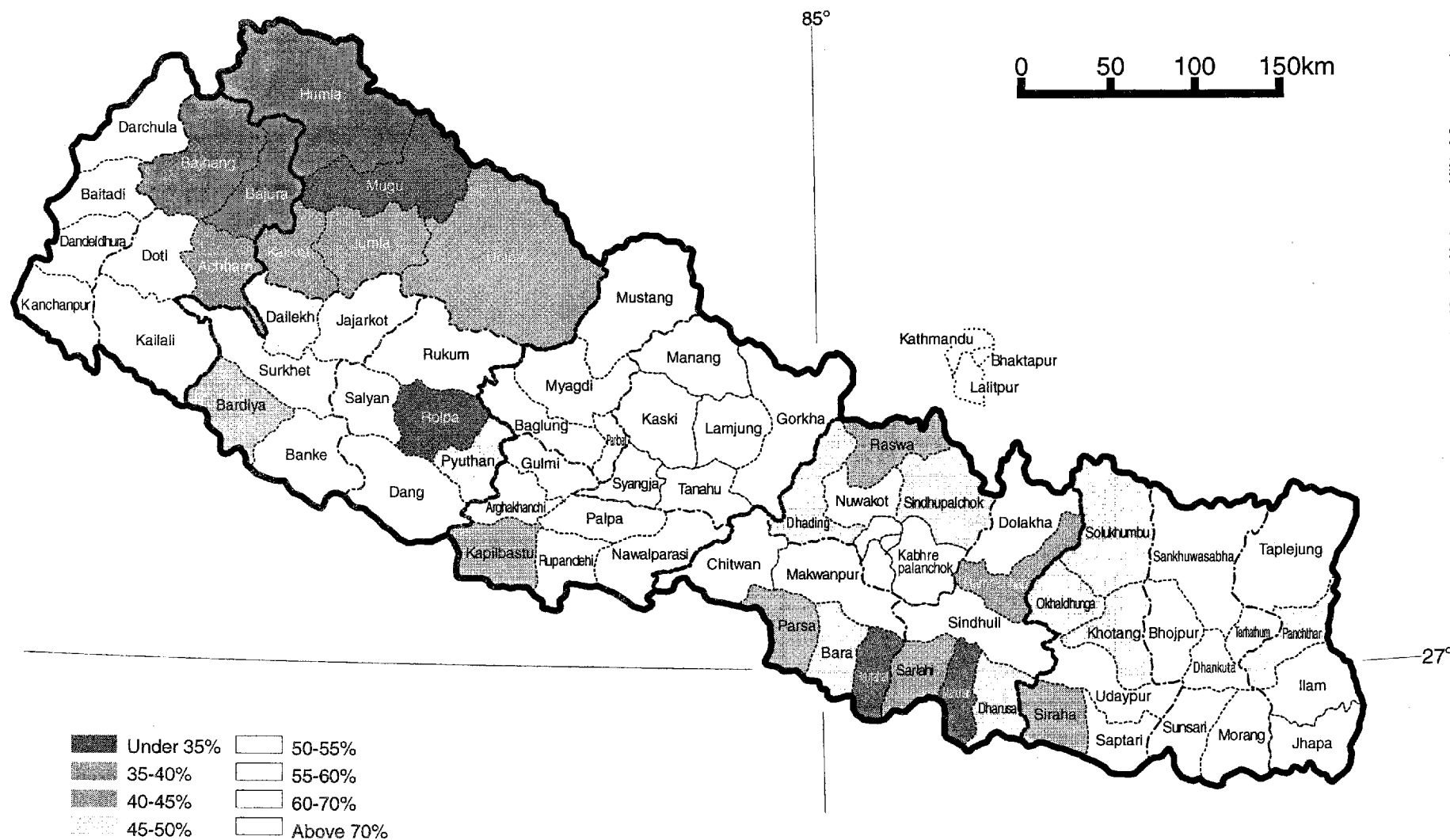
## EDUCATIONAL STATISTICS OF NEPAL AT A GLANCE 2000(2057)

INTERNAL EFFICIENCY RATE (%)										
TOTAL	Grade 1	Grade 2	Grade 3	Grade 4	Grade 5	Grade 6	Grade 7	Grade 8	Grade 9	Grade 10
Promotion rate	44.6	77.7	82.5	82.3	71.5	76.9	85.2	73.0	76.8	0.0
Repetition rate	41.8	16.5	12.7	12.9	10.8	11.6	8.9	12.2	9.2	1.5
Dropout rate	13.6	5.7	4.8	4.8	17.7	11.5	5.9	14.8	14.0	0.0
Survival rate	100.0	76.4	70.9	66.9	63.1	50.5	43.9	41	34.1	28.8
Coefficient of efficiency	-	-	-	60.0	51.4	48.0	48.2	52.4	38.1	40.6
<b>GIRLS</b>										
Promotion rate	44.7	78.1	83.5	83.9	72.0	76.7	80.6	70.9	78.0	0.0
Repetition rate	41.0	16.7	12.6	12.9	11.1	12.0	9.1	13.0	10.4	1.6
Dropout rate	14.3	5.1	4.0	3.2	16.9	11.3	10.2	16.2	11.6	0.0
Survival rate	100.0	75.7	70.8	67.3	64.7	52.3	45.5	40.4	32.8	28.5
Coefficient of efficiency	-	-	-	61.8	53.2	49.6	47.1	40.6	37.6	40.1
<b>BOYS</b>										
Promotion rate	44.5	77.5	81.8	81.1	71.2	77.1	88.5	74.5	76.0	0.0
Repetition rate	42.4	16.4	12.8	13.0	10.5	11.3	8.7	11.7	8.4	1.4
Dropout rate	13.1	6.2	5.5	5.9	18.4	11.6	2.9	13.8	15.6	0.0
Survival rate	100.0	77.0	71.1	66.6	62.0	49.1	42.7	41.3	34.8	28.9
Coefficient of efficiency	-	-	-	58.6	50.0	46.8	48.7	43.5	38.3	40.8

**BUDGET ALLOCATION: 2001/02**

<b>Total National Budget</b>	<b>99792219000</b>
<b>Educational Budget</b>	<b>14072847000</b>
<b>Percent</b>	<b>14.1</b>
<b>Budget Allocation in Education as a percentage of GDP(1999/00)</b>	<b>2.8</b>

### 6-10 Years Literacy Level (2001)

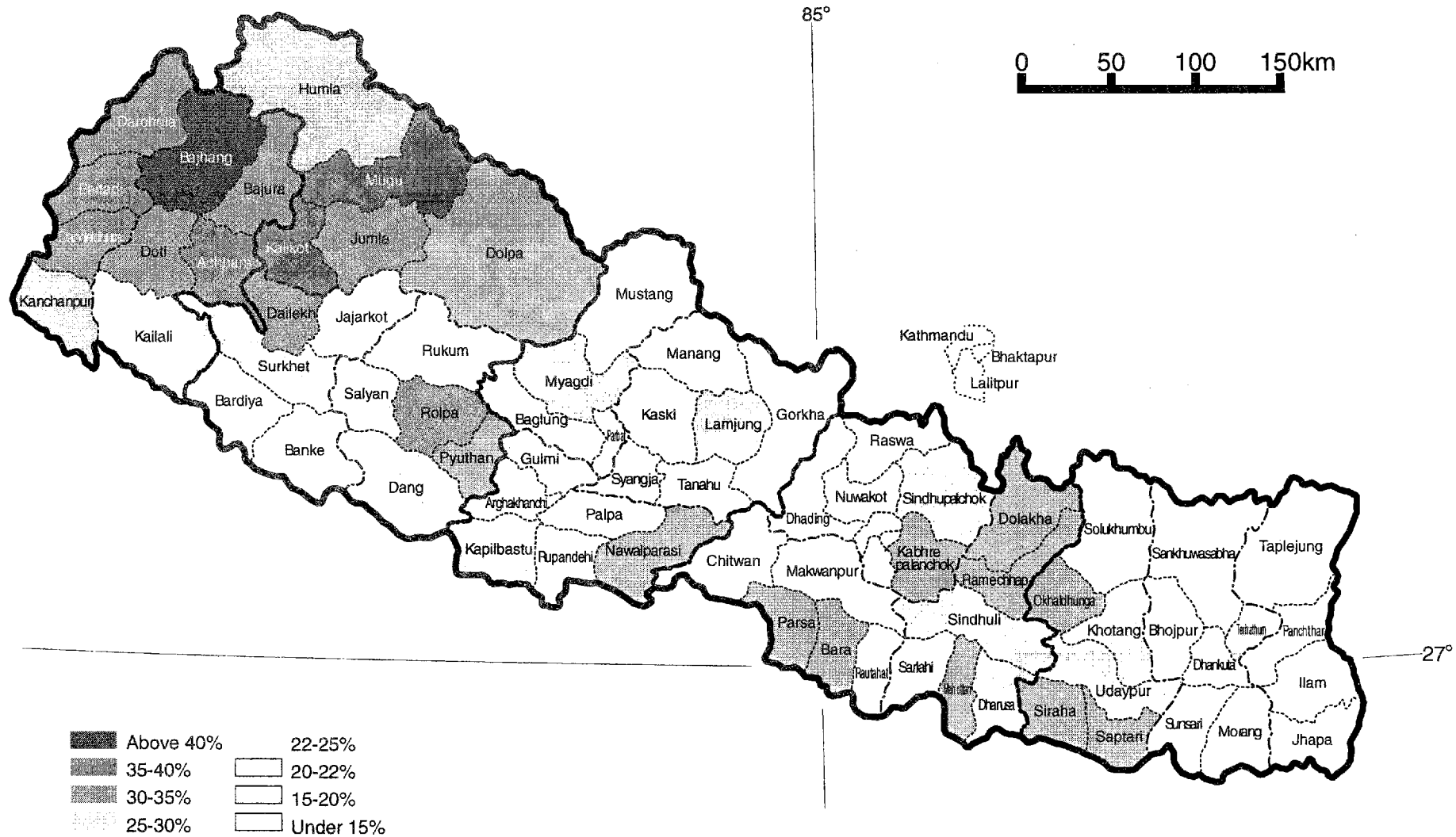


from Literacy Situation in Nepal A Thematic Presentation NFEC 2002



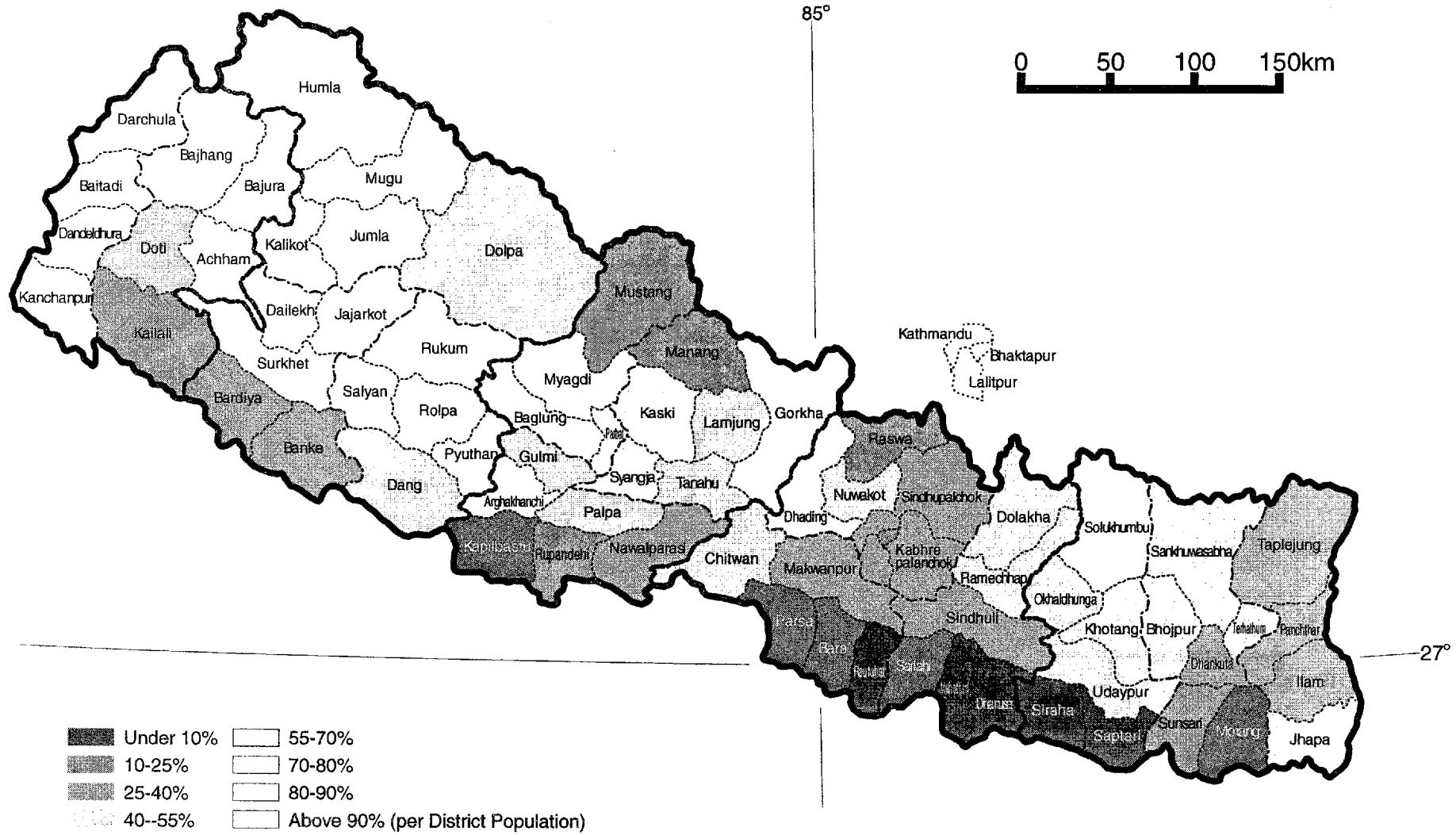
# Gender gap in Literacy (2001)

- 37 -



from Literacy Situation in Nepal A Thematic Presentation NFEC 2002

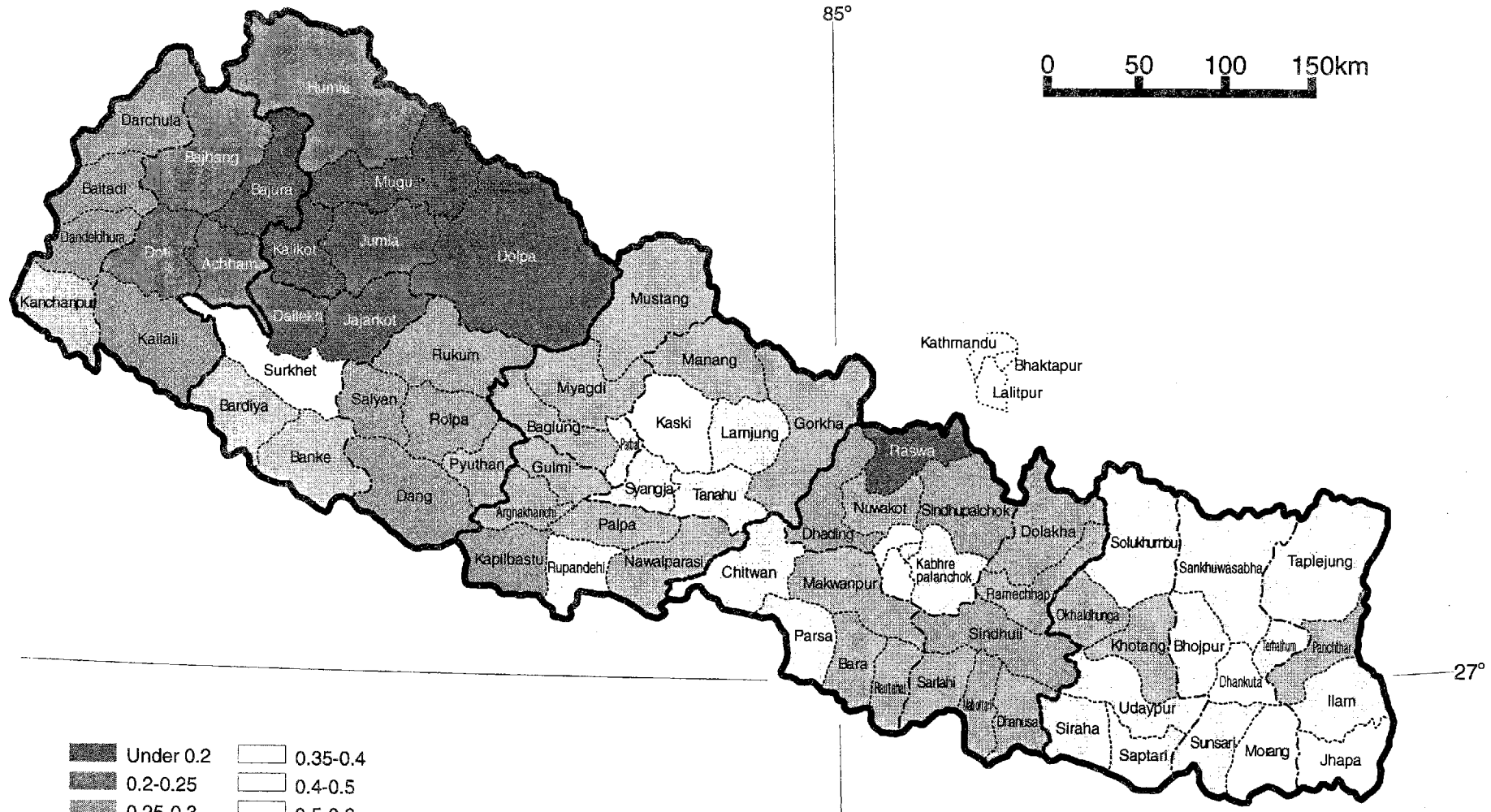
# Mother tongue Population Rate by Nepali (2001)



from Central Bureau of Statistics 2001

# Human Development Index (1996)

-39-



	Under 0.2		0.35-0.4
	0.2-0.25		0.4-0.5
	0.25-0.3		0.5-0.6
	0.3-0.35		Above 0.6

from Human Development across districts

#### 4. 参考資料リスト

- “Non-Formal Education and Literacy Campaign, Program Implementation Manual (PIM) 2058 (=2001/2002)” MOES, NFEC
- “Literacy Situation in Nepal, A Thematic Presentation 2002” MOES, NFEC
- “Education Information of Nepal 2001” MOES, Planning Division, Statistics Section
- “Social Assessment of Educationally Disadvantaged Groups 1997” CERID
- “Nepal District Profile 2002” National Development Institute
- “Population and Census (National Report) 2001” Central Bureau of Statistics
  
- “*Gyanodaya* CLC Bulletin” Vol. II No.2 January/February 2003 (ネパール語)
- “*Purvadhar* COPE Bulletin” July/August 2002 (ネパール語)
  
- 「ネパールのカースト／エスニック・グループ間の教育格差とその要因に関する実証的研究」  
晶 博之
- 「第2次基礎初等教育プログラムにおける小学校建設計画（フェーズⅡ）基本設計調査現地調査帰国報告書」
- 「ネパール王国教育分野企画調査報告書」企画部地域第二課