

2-2-3 Basic Design Drawings

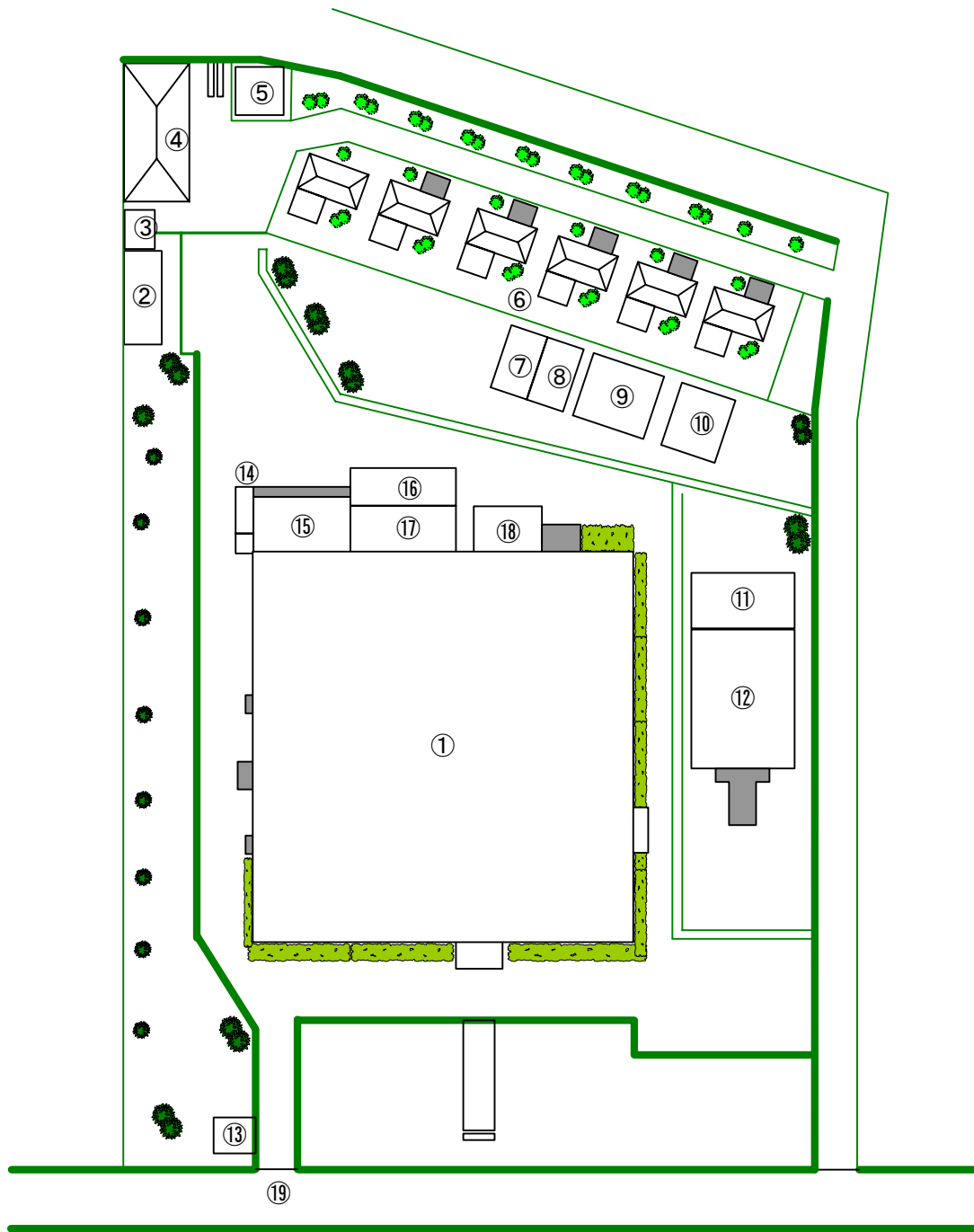
- G-01 Site Layout for TVRI Makassar Station
- G-02 Floor Plan for TVRI Makassar Station Building
- G-03 Equipment Configuration (Studio No.2 and PC Room)
- G-04 Equipment Configuration (Editing Room)
- G-05 Equipment Configuration (ENG Camera)

- L-01 Layout Plan for Studio No.2/Sub-Control Room
- L-02 Layout Plan for PC Room
- L-03 Layout Plan for Live Studio
- L-04 Layout Plan for One to One Editing Room

- Sy-01 Studio No.2: Video System Block Diagramme
- Sy-02 Studio No.2: Audio System Block Diagramme
- Sy-03 Studio No.2: Intercommunication System Block Diagramme
- Sy-04 PC Room: Output Switcher System Block Diagramme
- Sy-05 PC Room: Video System Block Diagramme
- Sy-06 PC Room: Audio System Block Diagramme
- Sy-07 PC Room: Intercommunication System Block Diagramme

- E-01 Single Line Diagramme

- A-01 Layout Plan for Air-Conditioning System and Ducts

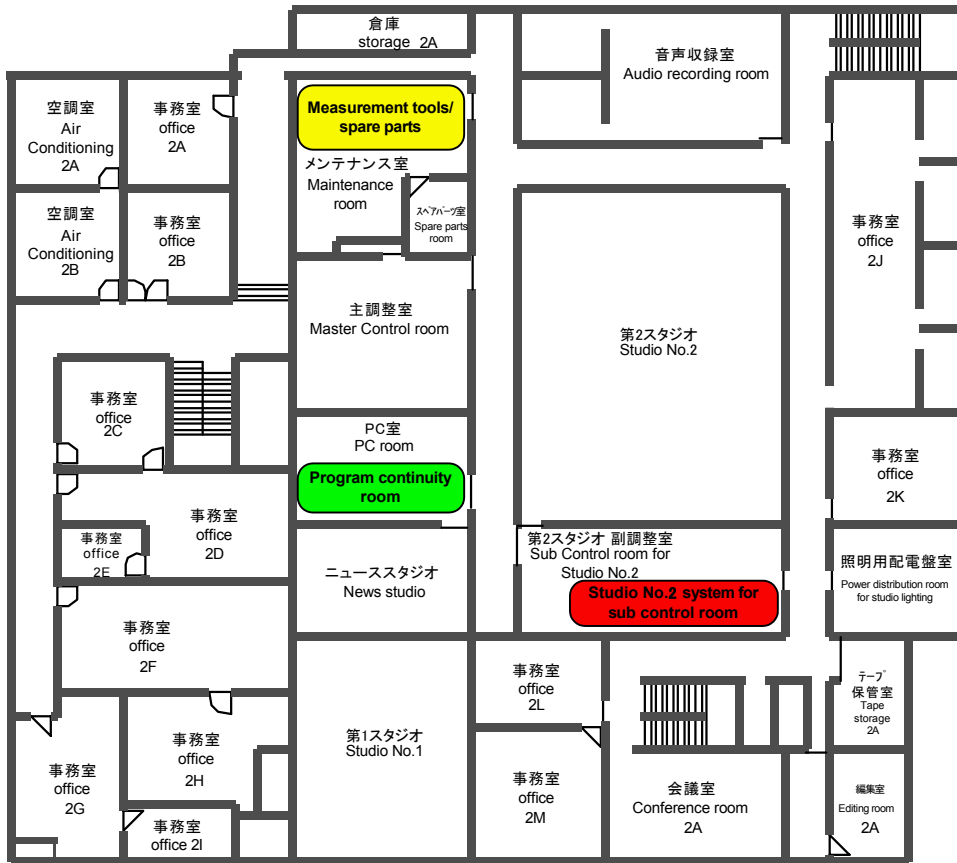


Scale 0 5 10 15 20m

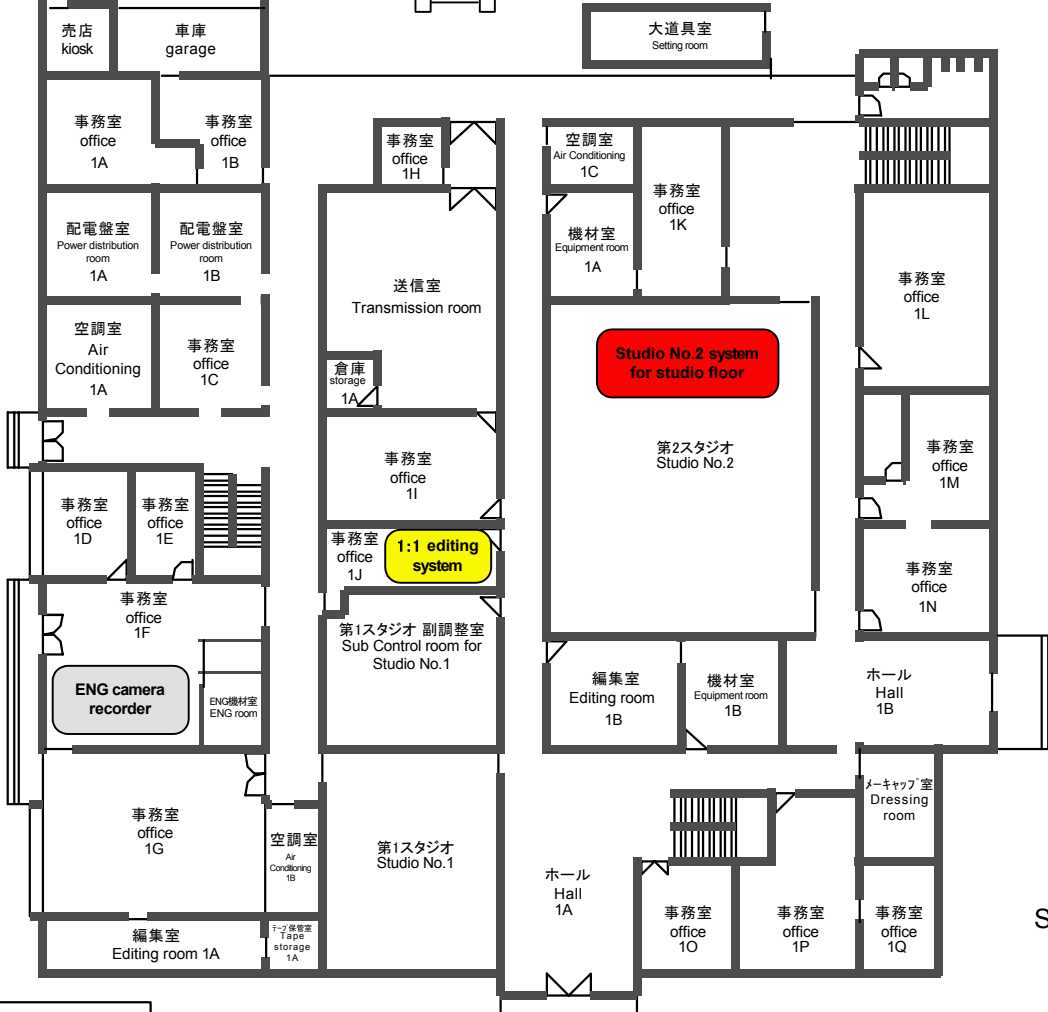
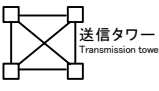
Correspondence/対応表

- ① Station building/局舎
- ② Generator house/発電機室
- ③ Transformer house/変圧器室
- ④ Garage/車庫
- ⑤ Security post/守衛室
- ⑥ Accommodations/宿舎
- ⑦ Computer workshop/コンピューター修理室
- ⑧ Setting material warehouse/大道具室
- ⑨ Setting material workshop/大道具工作室
- ⑩ Official's lady office/女性職員用事務室
- ⑪ Office of TVRI Division VI/TVRI第4事業部事務所
- ⑫ Ditto/同上
- ⑬ Security post/守衛室
- ⑭ Kiosk/売店
- ⑮ Garage/車庫
- ⑯ Ditto/同上
- ⑰ Transmission tower/送信タワー
- ⑱ Setting room/大道具室
- ⑲ Main gate/正門

G-01 TVRIマカッサル放送局敷地図
General layout of TVRI Makassar
Station



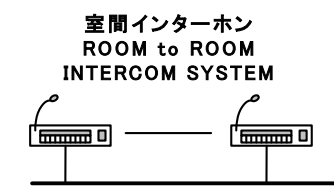
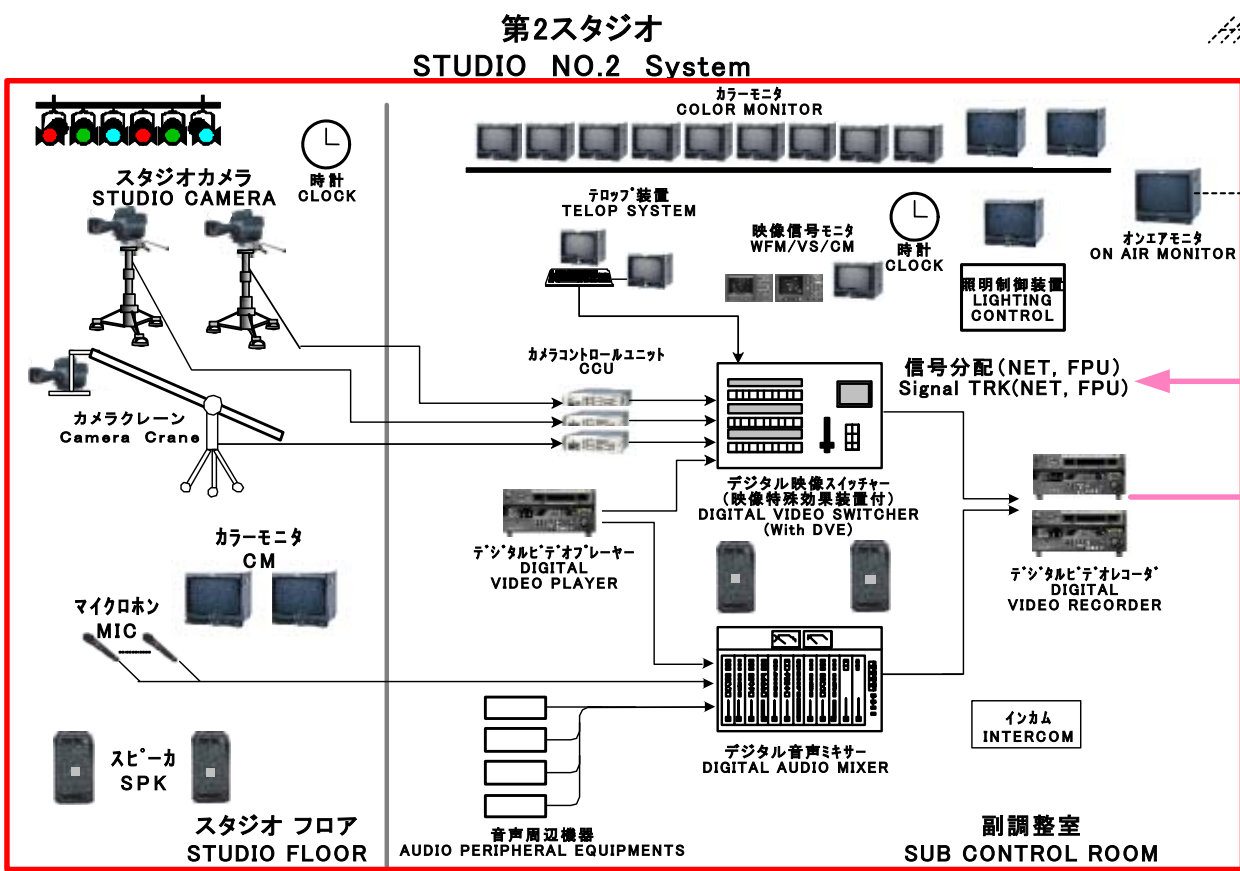
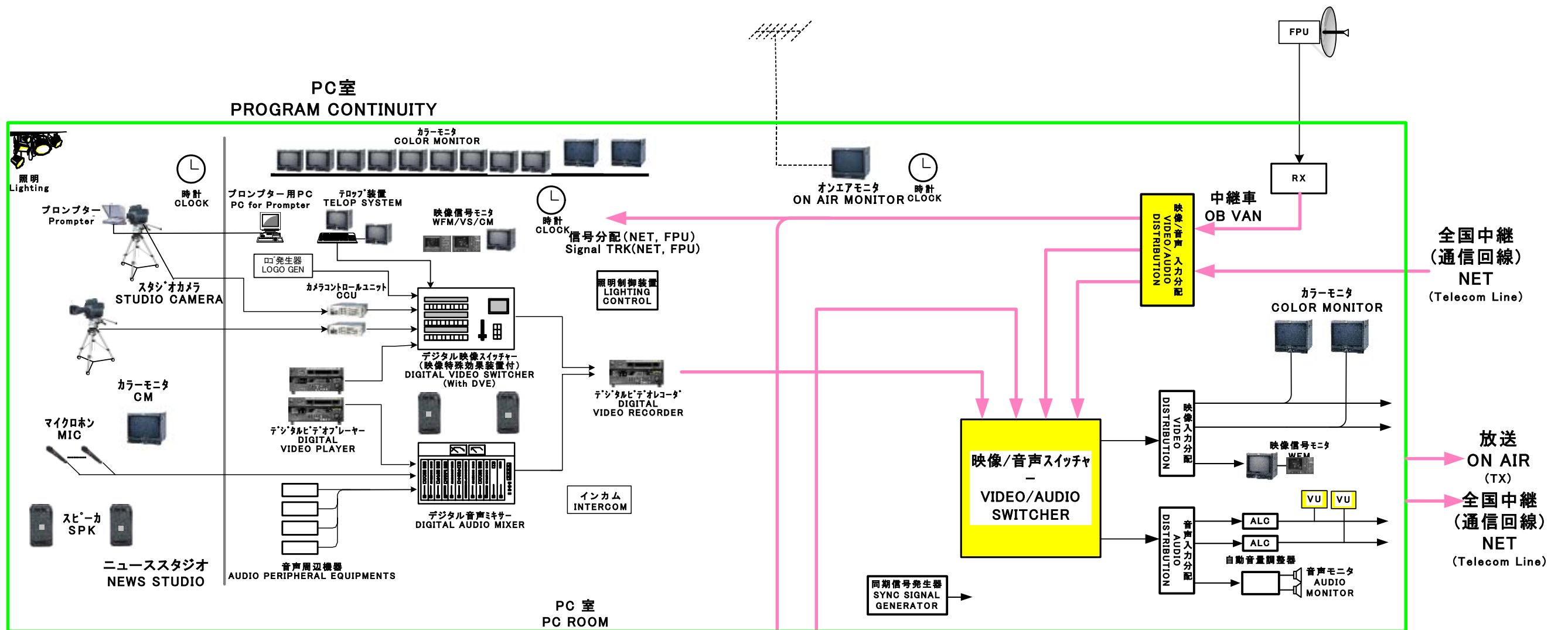
2階/Second floor



1階/First floor

Scale: 1/300

G-02 TVRIマカッサル放送局 局舎内 配置図
General layout of TVRI Makassar
Station

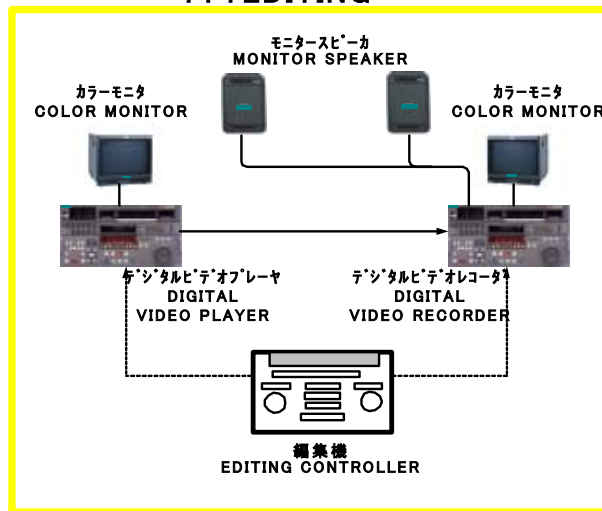


Abbreviation (略語集)

- | | | |
|--------------------------------------|------------------------------|------------------------------------|
| A/D : Analog to Digital Converter | DVE : Digital Video Effector | RX : Receiver |
| ADA : Audio Distribution Amplifier | EQA : Equalizer Amplifier | SG : SYNC Generator |
| ALC : Automatic Level Controller | FPU : Field Pick Up Unit | SPK : Speaker |
| C.G : Character Generator | LD : Light Director | SW : Switcher |
| C.GEN : Character Generator | MIC : Microphone | TB : Talk Back |
| CCU : Camera Control Unit | MON : Monitor | TEL PIC : Telephone Pick Up |
| CM : Color Monitor | OB : Outside Broadcasting | TRK : Trunk Line |
| D/A : Digital to Analog Converter | PD : Producer | TX : Transmitter |
| DA : Distribution Amplifier | PGM : Program | VDA : Video Distribution Amplifier |
| DDA : Digital Distribution Amplifier | PVW : Preview | VE : Video Engineer |
| | | VS : Vector Scope |
| | | VU : Volume Meter |
| | | WFM : Wave From Monitor |

G-03 機材構成図 (第2スタジオ・PC室)
Composition of TV Broadcasting System
for TVRI MAKASSAR (Program Contiunity, Studio No.2)

1対1編集システム
1:1 EDITING (2 sets)



G-04 機材構成図 (編集室)

Composition of TV Broadcasting System
for TVRI MAKASSAR (1:1 Editing System)

**ENGカメラ
ENG CAMERA RECORDER
(2sets)**



カメラ/ズームレンズ
Camera/Zoom Lens



ワイヤレスマイク
Wireless Mic.



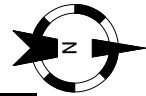
三脚
Tripod



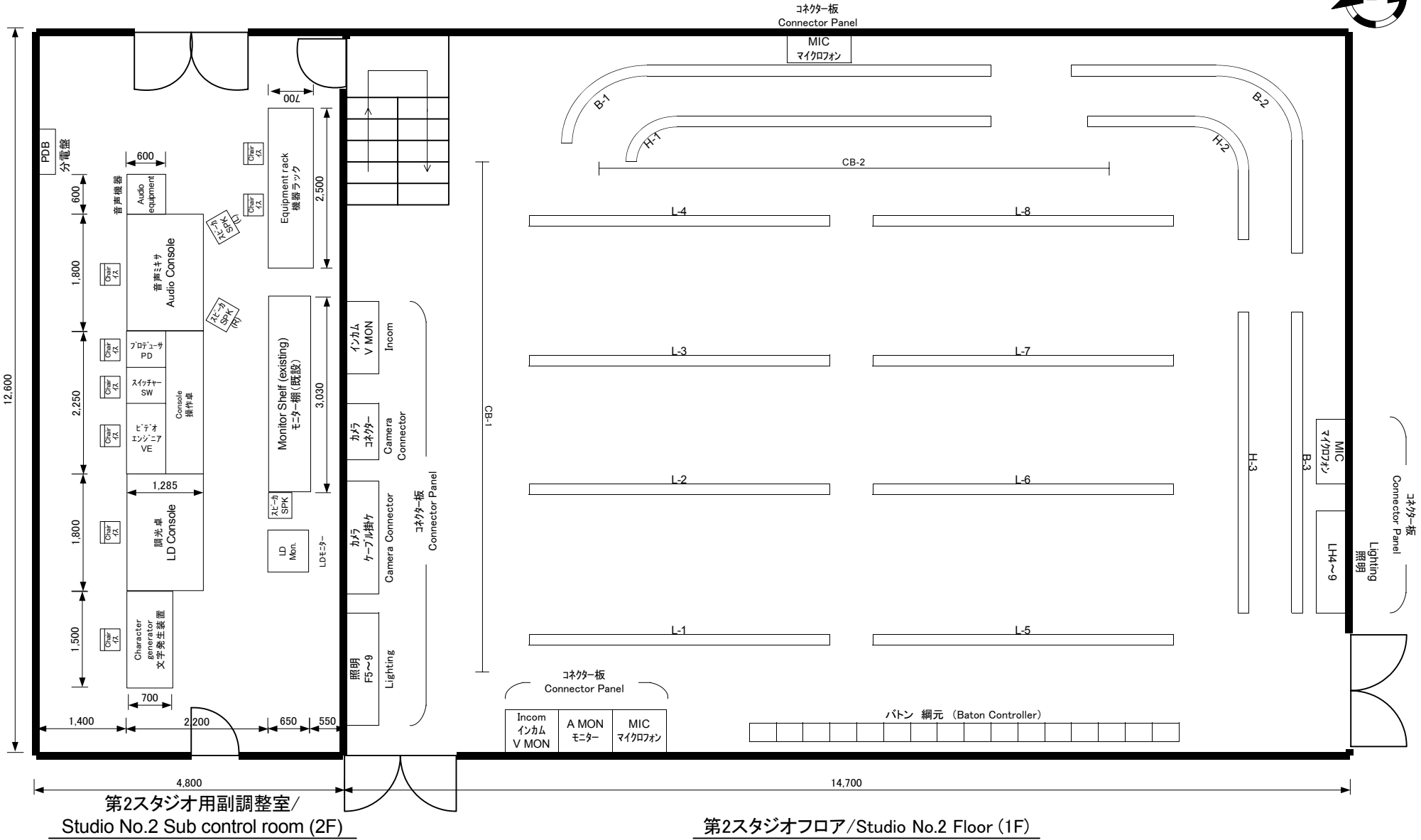
カメラ照明
Camera Lighting

G-05 機材構成図（取材カメラ）

Composition of TV Broadcasting System
for TVRI MAKASSAR (ENG Camera Recorder)



2-41

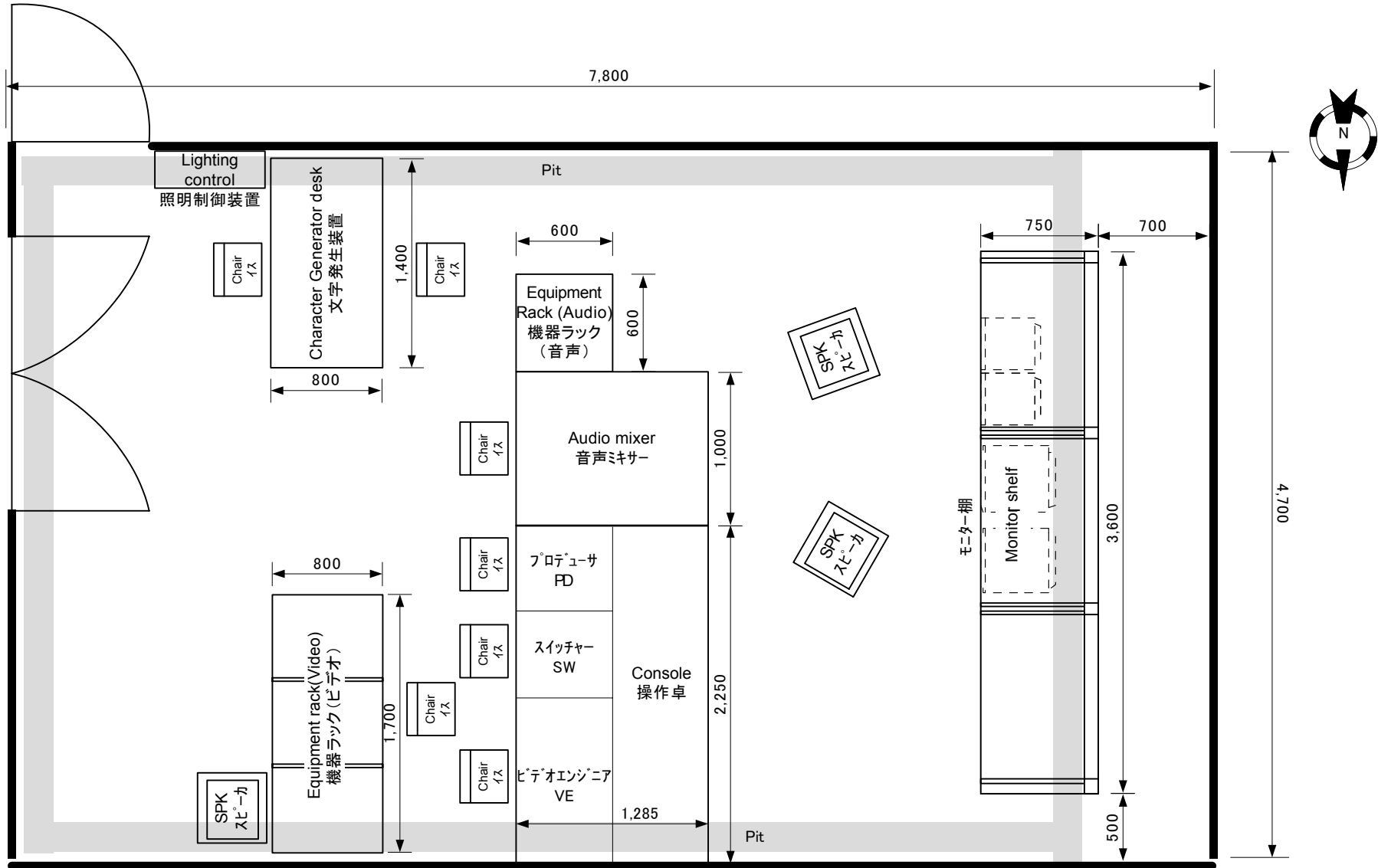


Abbreviation (略語集)

- | | |
|---------------------|---------------------|
| LD : Light Director | PD : Producer |
| MIC : Microphone | SPK : Speaker |
| MON : Monitor | SW : Switcher |
| | VE : Video Engineer |

L-01 第2スタジオ・副調整室 配置計画図

Layout plan of Studio No.2 and Sub control room

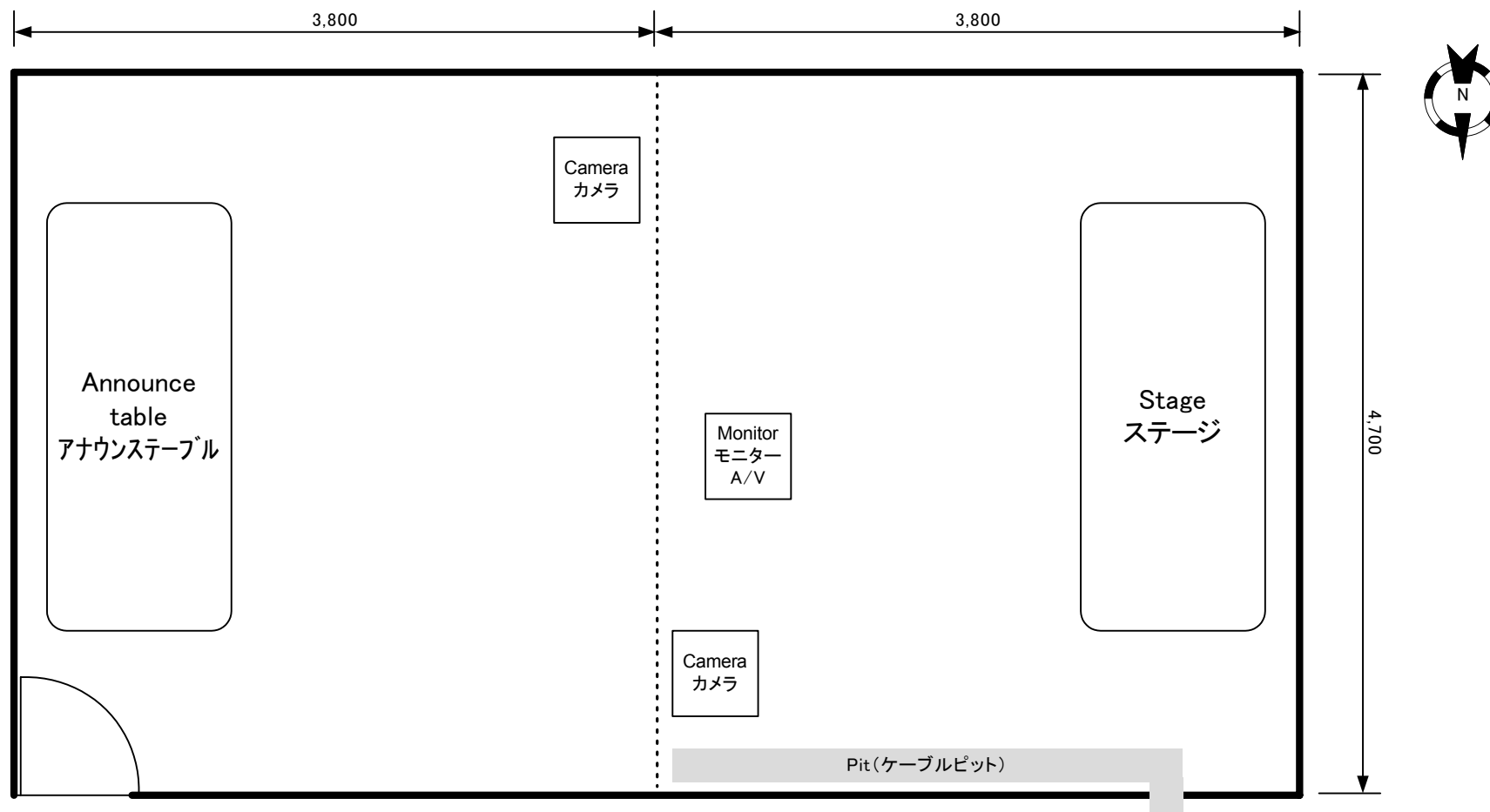


Abbreviation (略語集)

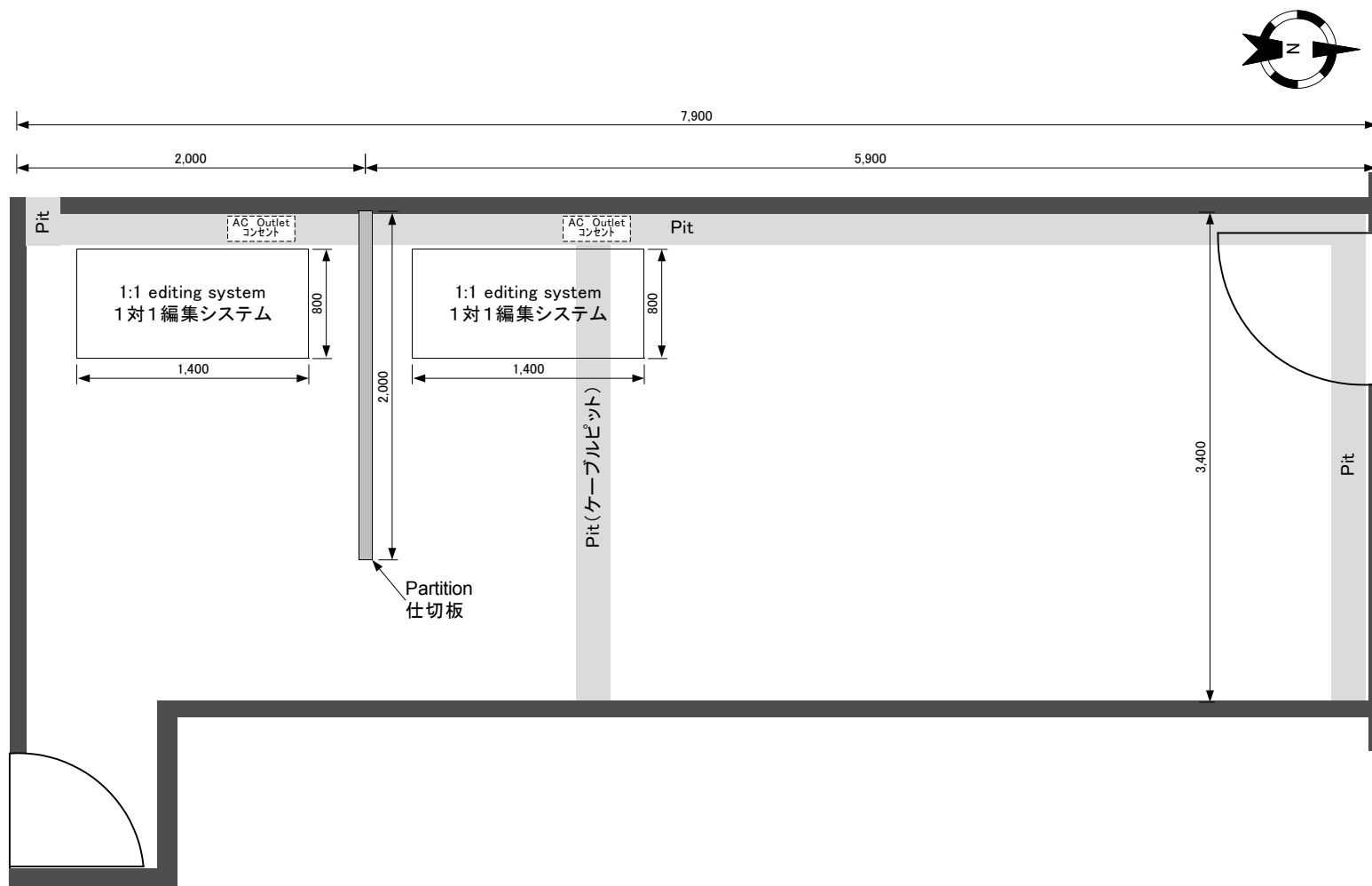
- PD : Producer
- SPK : Speaker
- SW : Switcher
- VE : Video Engineer

L-02 PC室 配置計画図

Layout plan of Program continuity room

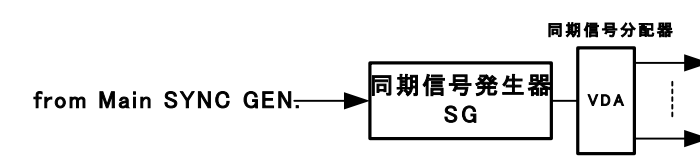
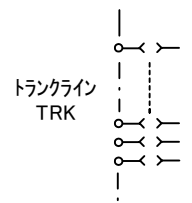
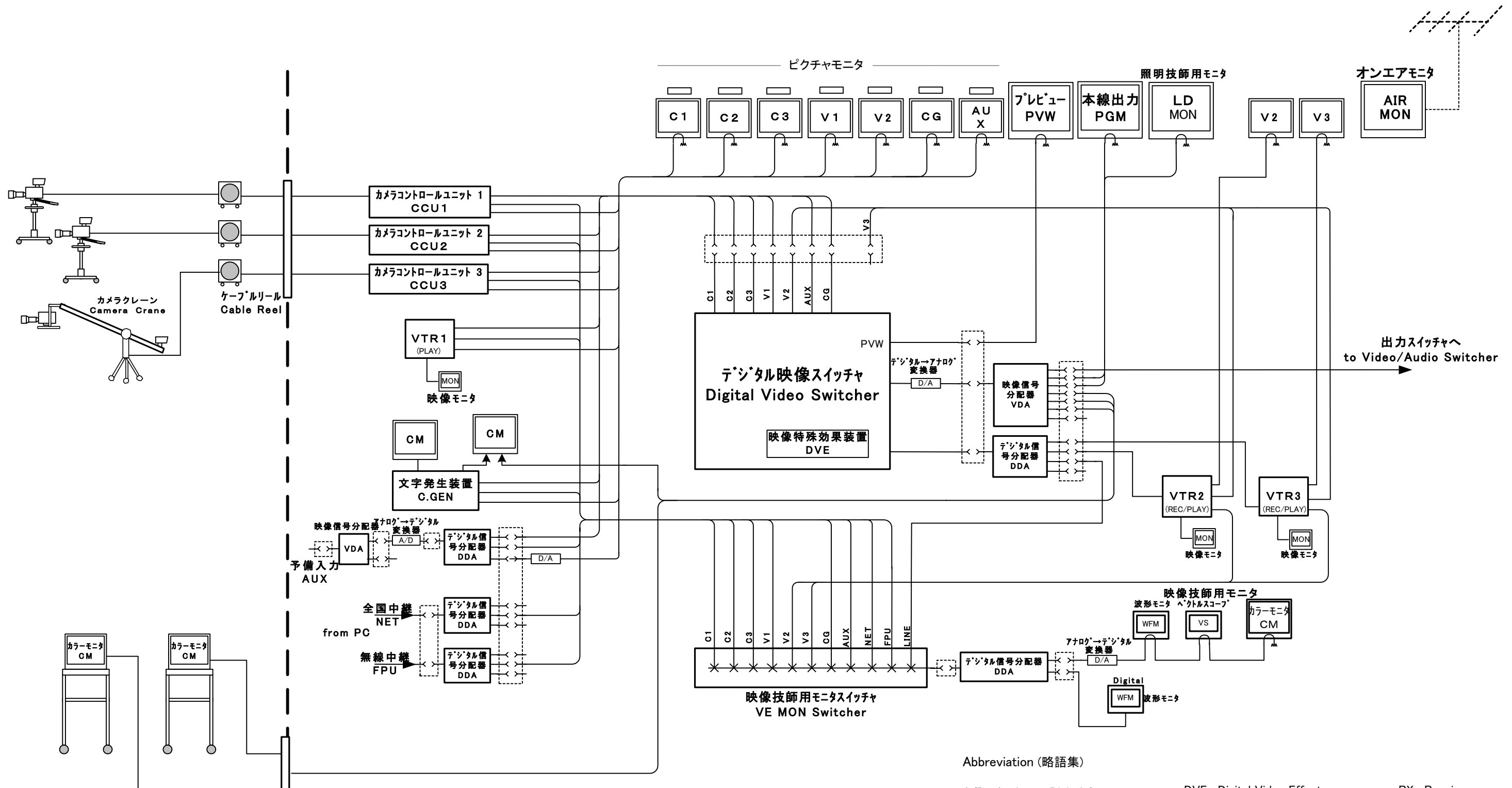


L-03 ニューススタジオ配置計画図
Layout of
News studio



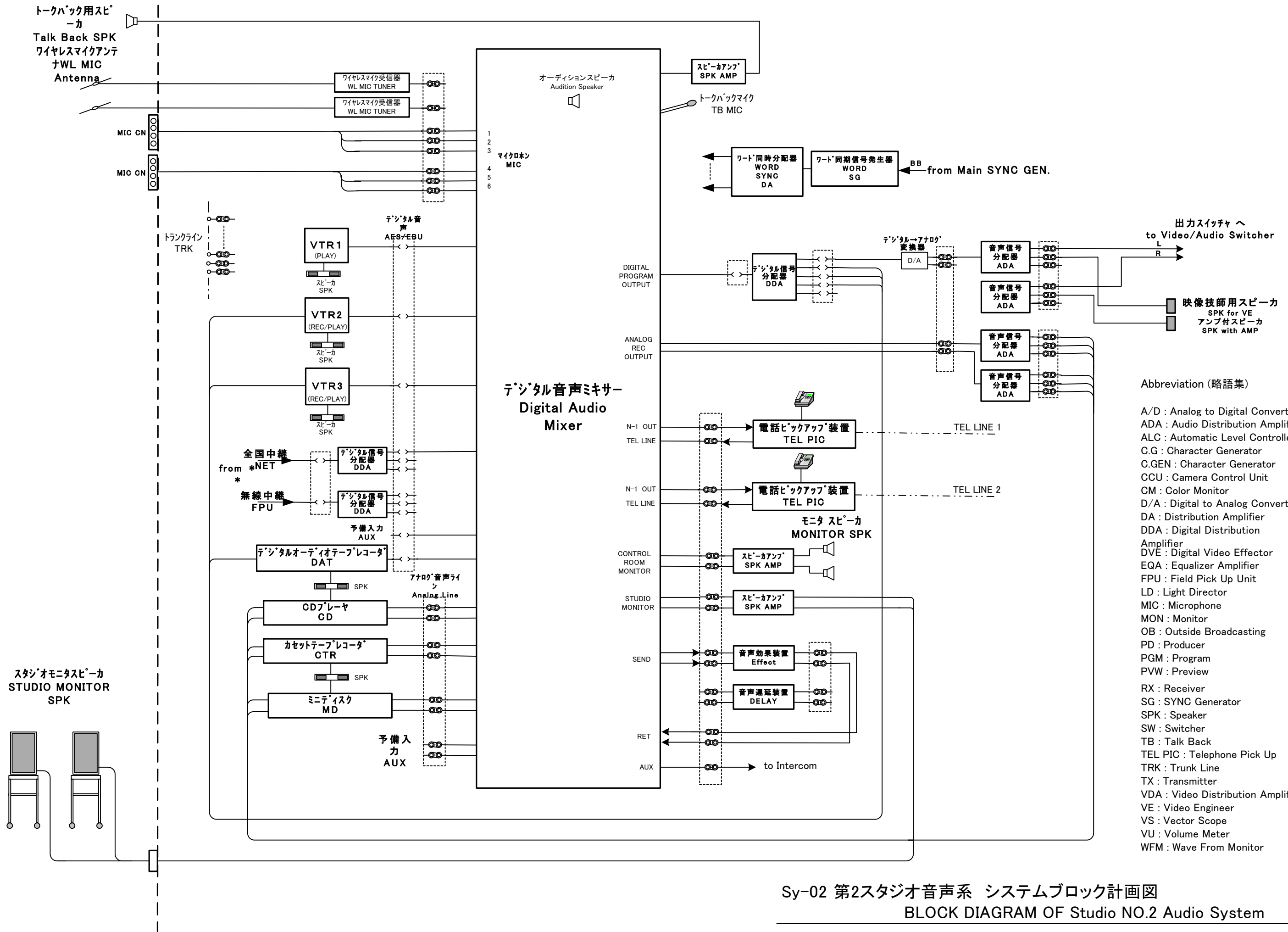
L-04 1対1編集機室 配置計画図(既設事務室1J)

Layout plan of 1:1 Editing System room (Existing Office 1J)

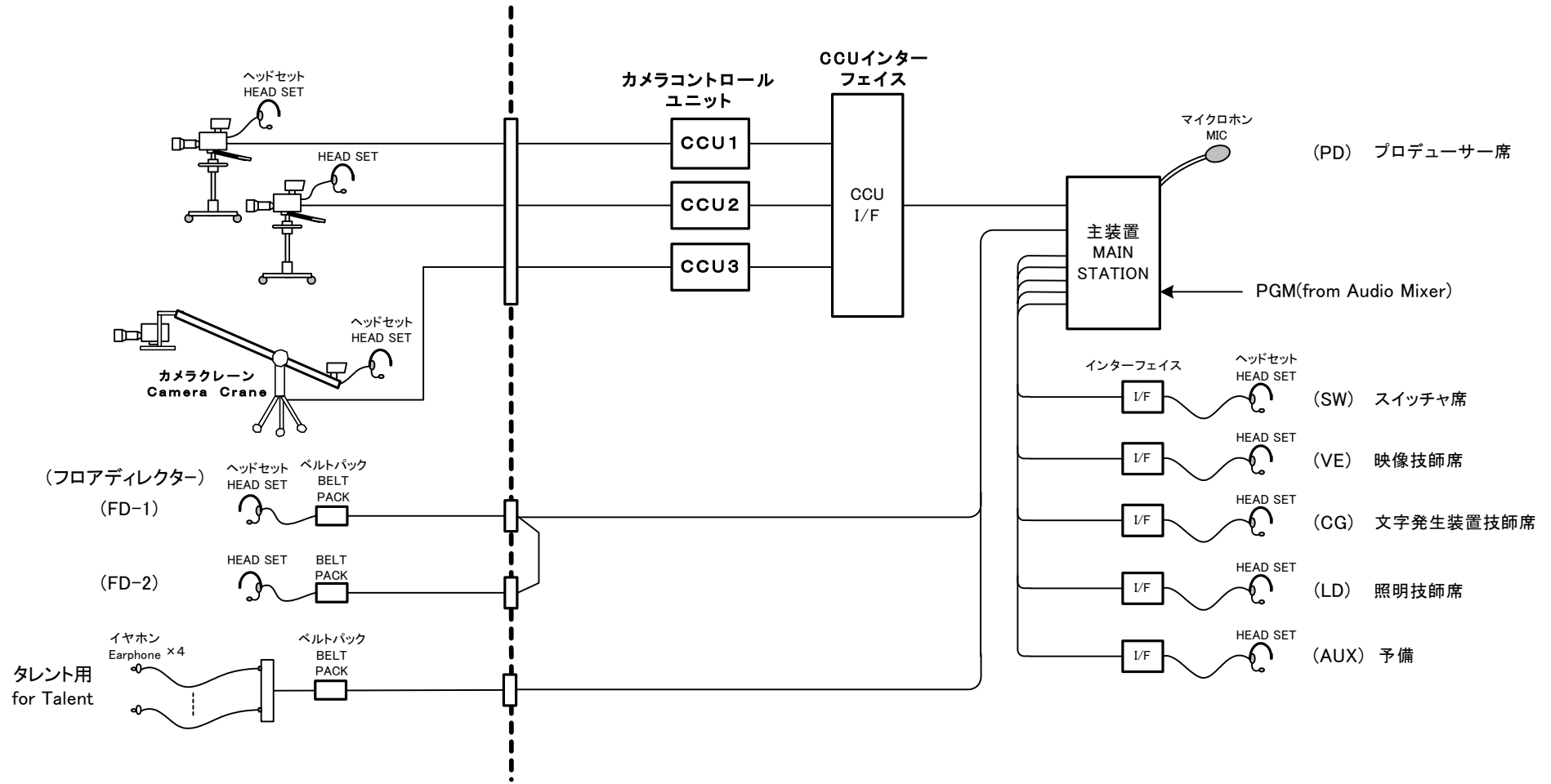


- Abbreviation (略語集)
- | | | |
|--------------------------------------|------------------------------|------------------------------------|
| A/D : Analog to Digital Converter | DVE : Digital Video Effector | RX : Receiver |
| ADA : Audio Distribution Amplifier | EQA : Equalizer Amplifier | SG : SYNC Generator |
| ALC : Automatic Level Controller | FPU : Field Pick Up Unit | SPK : Speaker |
| C.G : Character Generator | LD : Light Director | SW : Switcher |
| C.GEN : Character Generator | MIC : Microphone | TB : Talk Back |
| CCU : Camera Control Unit | MON : Monitor | TEL PIC : Telephone Pick Up |
| CM : Color Monitor | OB : Outside Broadcasting | TRK : Trunk Line |
| D/A : Digital to Analog Converter | PD : Producer | TX : Transmitter |
| DA : Distribution Amplifier | PGM : Program | VDA : Video Distribution Amplifier |
| DDA : Digital Distribution Amplifier | PVW : Preview | VE : Video Engineer |
| | | VS : Vector Scope |
| | | VU : Volume Meter |
| | | WFM : Wave From Monitor |

Sy-01 第2スタジオ映像系 システムブロック計画図
BLOCK DIAGRAM OF Studio NO.2 Video System



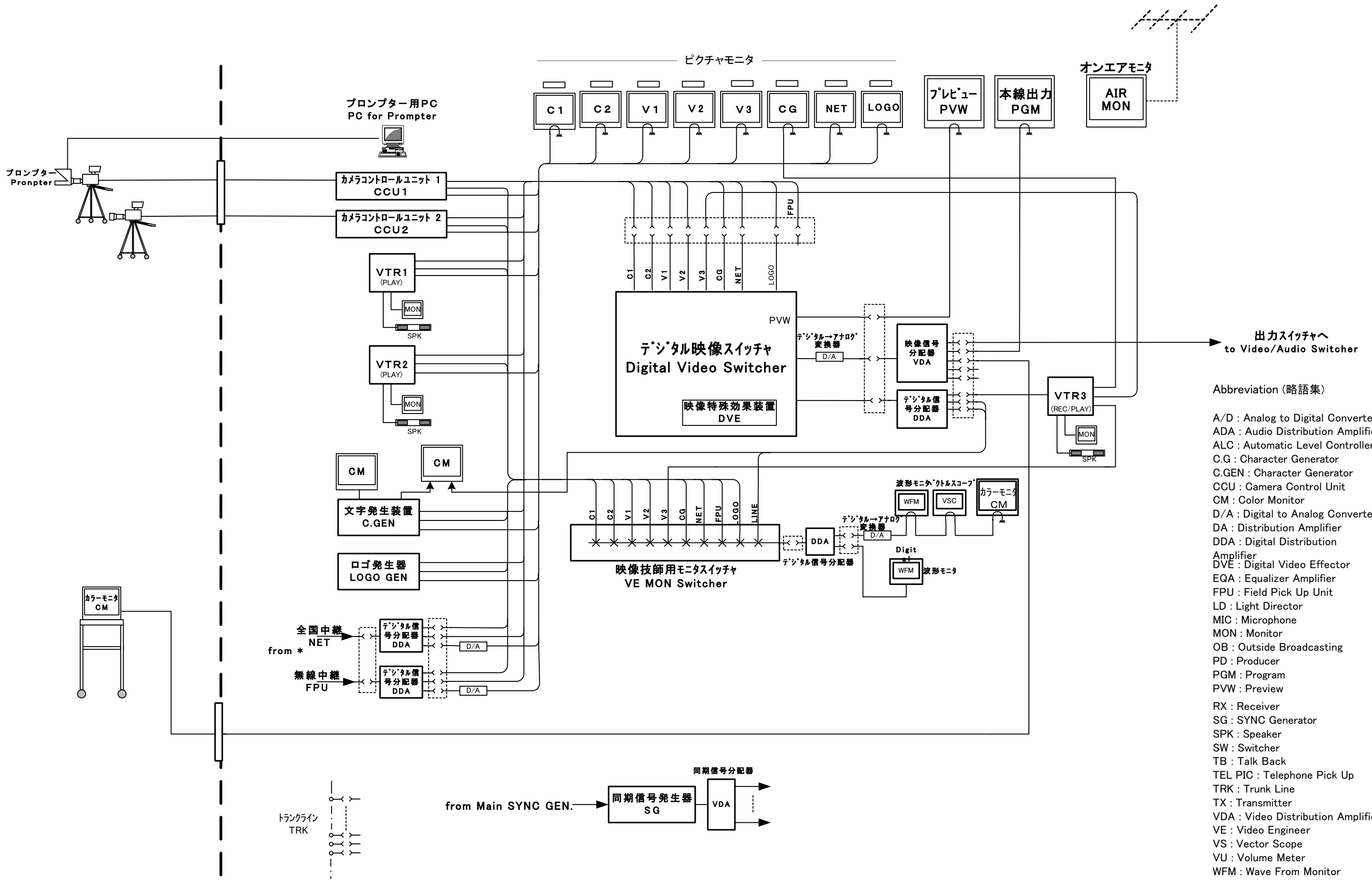
Sy-02 第2スタジオ音声系 システムブロック計画図
BLOCK DIAGRAM OF Studio NO.2 Audio System



Abbreviation (略語集)

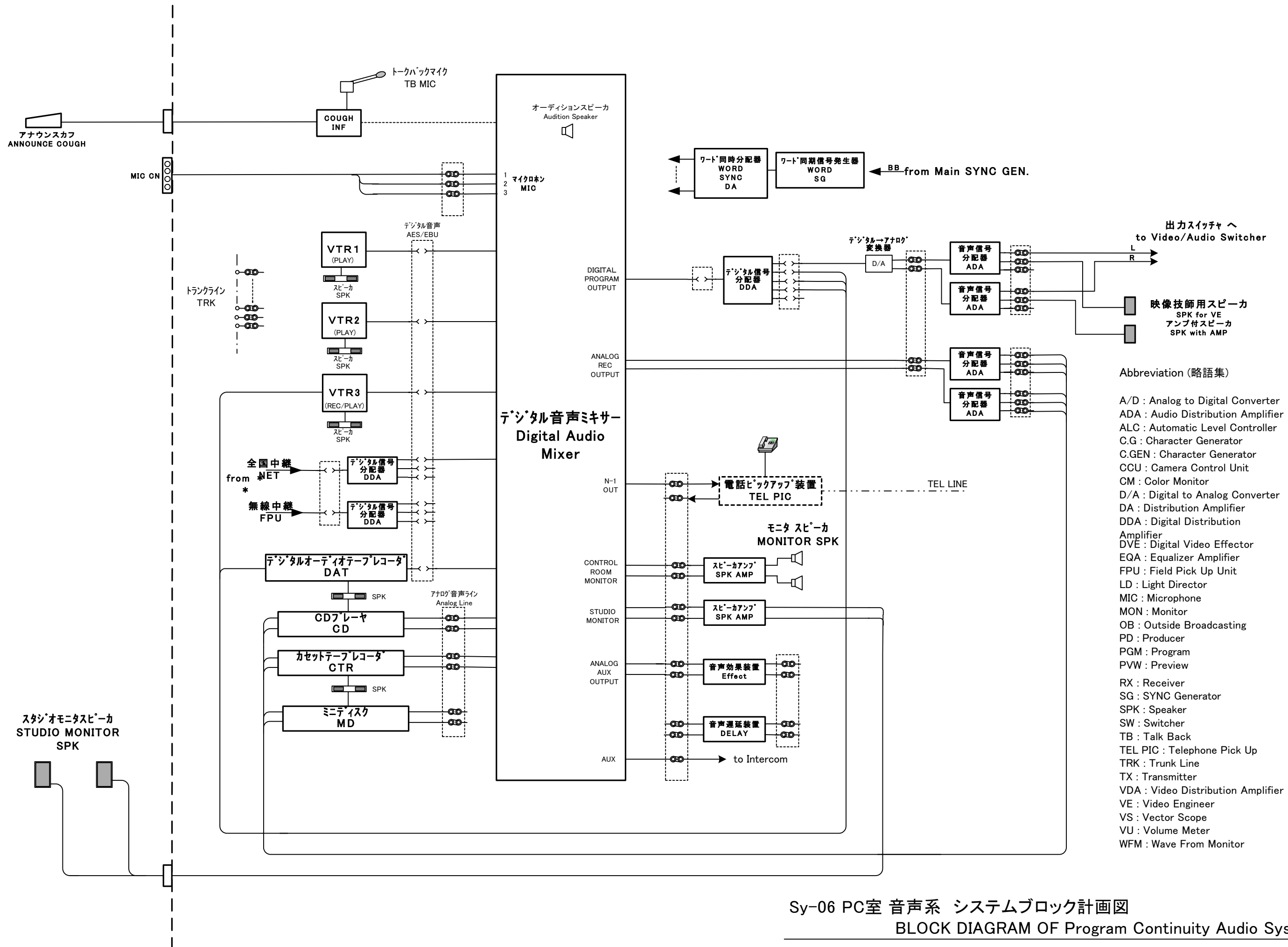
- | | | |
|--------------------------------------|------------------------------|------------------------------------|
| A/D : Analog to Digital Converter | DVE : Digital Video Effector | RX : Receiver |
| ADA : Audio Distribution Amplifier | EQA : Equalizer Amplifier | SG : SYNC Generator |
| ALC : Automatic Level Controller | FPU : Field Pick Up Unit | SPK : Speaker |
| C.G : Character Generator | LD : Light Director | SW : Switcher |
| C.GEN : Character Generator | MIC : Microphone | TB : Talk Back |
| CCU : Camera Control Unit | MON : Monitor | TEL PIC : Telephone Pick Up |
| CM : Color Monitor | OB : Outside Broadcasting | TRK : Trunk Line |
| D/A : Digital to Analog Converter | PD : Producer | TX : Transmitter |
| DA : Distribution Amplifier | PGM : Program | VDA : Video Distribution Amplifier |
| DDA : Digital Distribution Amplifier | PVW : Preview | VE : Video Engineer |
| | | VS : Vector Scope |
| | | VU : Volume Meter |
| | | WFM : Wave From Monitor |

Sy-03 第2スタジオ インターカム システムブロック計画図
BLOCK DIAGRAM OF Intercom System for ST2

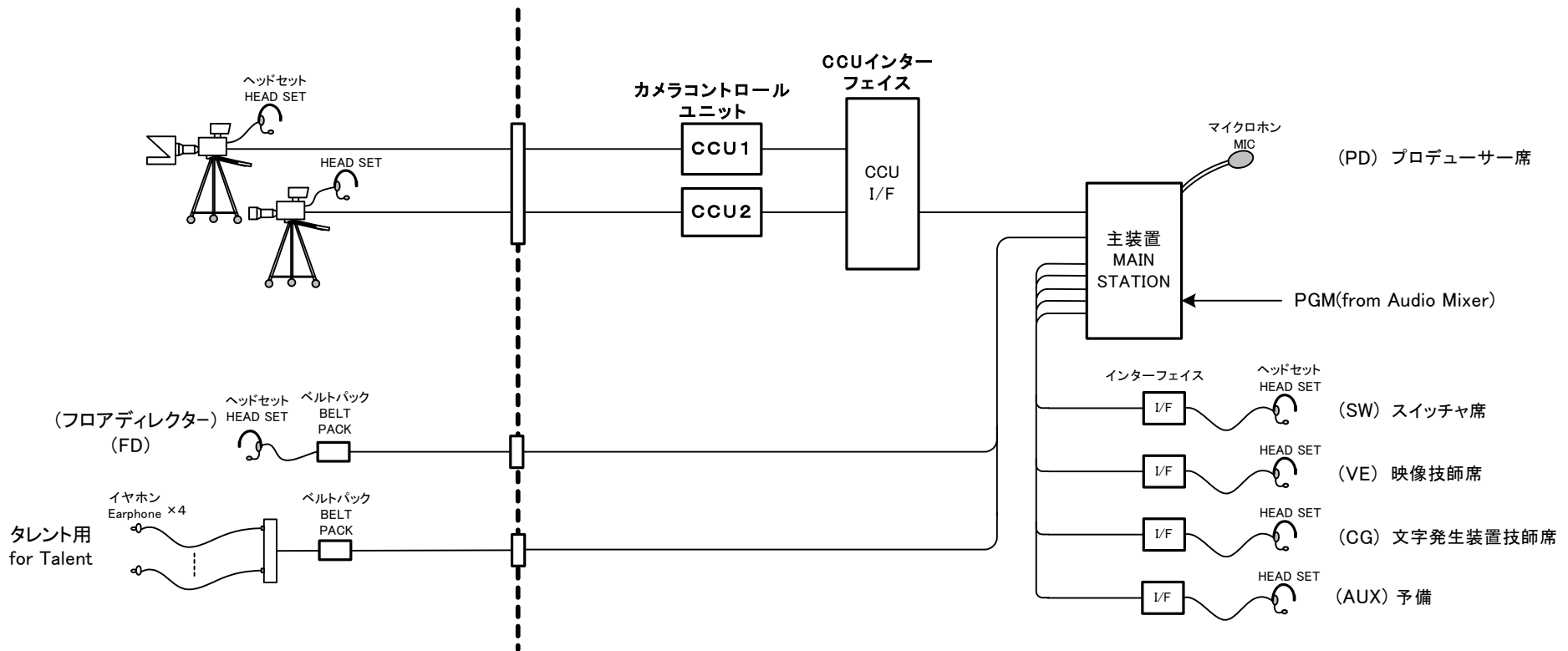


- Abbreviation (略語集)
- A/D : Analog to Digital Converter
 - ADA : Audio Distribution Amplifier
 - ALC : Automatic Level Controller
 - C.G : Character Generator
 - C.GEN : Character Generator
 - CCU : Camera Control Unit
 - CM : Color Monitor
 - D/A : Digital to Analog Converter
 - DA : Distribution Amplifier
 - DDA : Digital Distribution Amplifier
 - DVE : Digital Video Effector
 - EQA : Equalizer Amplifier
 - FPU : Field Pick Up Unit
 - LD : Light Director
 - MIC : Microphone
 - MON : Monitor
 - OB : Outside Broadcasting
 - PD : Producer
 - PGM : Program
 - PVW : Preview
 - RX : Receiver
 - SG : SYNC Generator
 - SPK : Speaker
 - SW : Switcher
 - TB : Talk Back
 - TEL PIC : Telephone Pick Up
 - TRK : Trunk Line
 - TX : Transmitter
 - VDA : Video Distribution Amplifier
 - VE : Video Engineer
 - VS : Vector Scope
 - VU : Volume Meter
 - WFM : Wave From Monitor

Sy-05 PC室 映像系 システムブロック計画図
 BLOCK DIAGRAM OF Program Continuity Video System

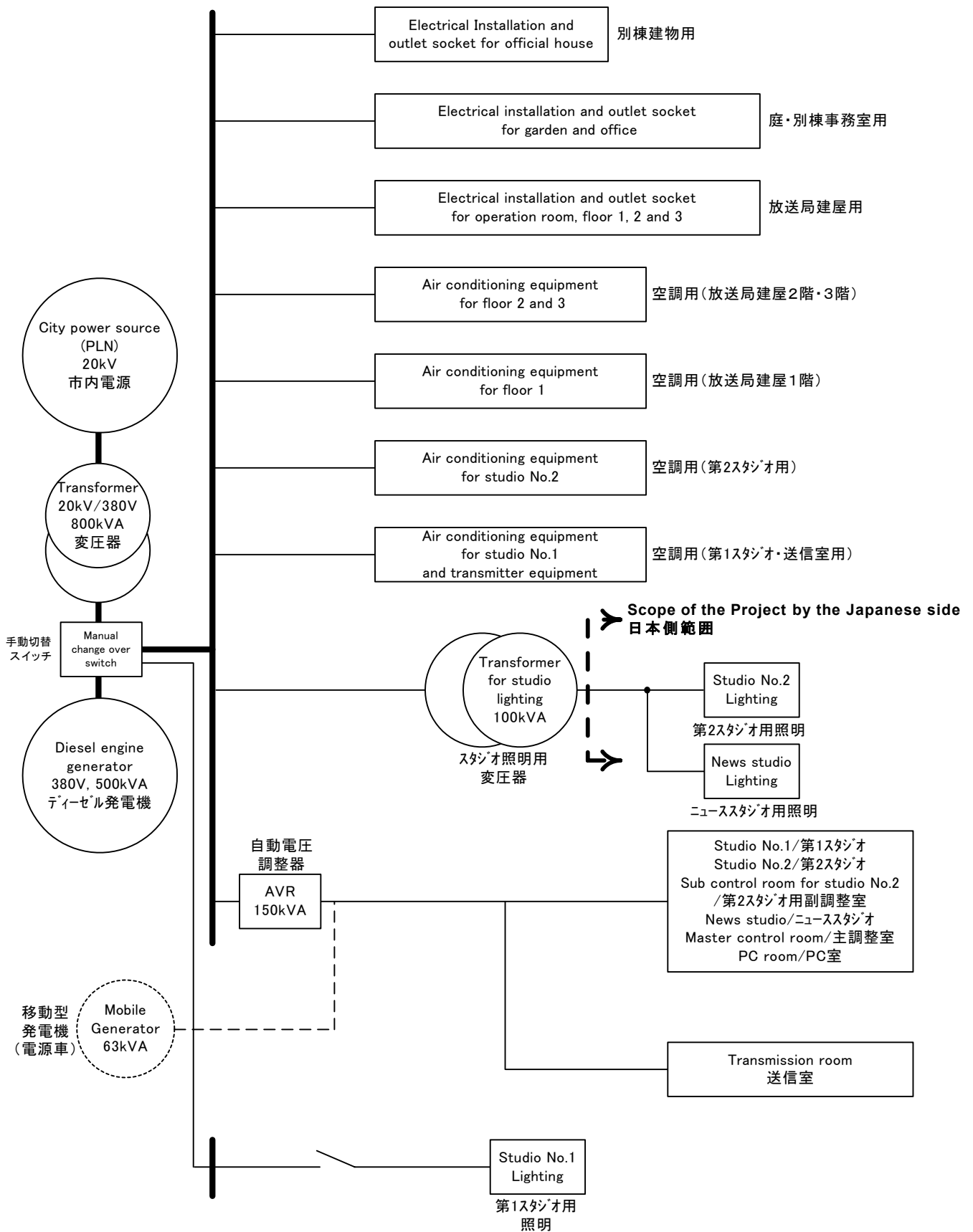


Sy-06 PC室 音声系 システムブロック計画図
BLOCK DIAGRAM OF Program Continuity Audio System



Abbreviation (略語集)

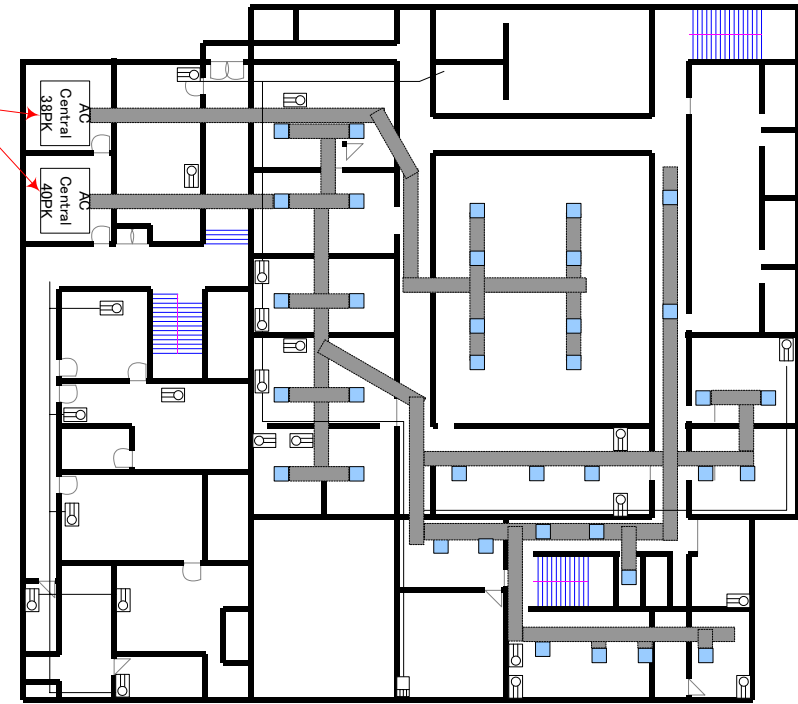
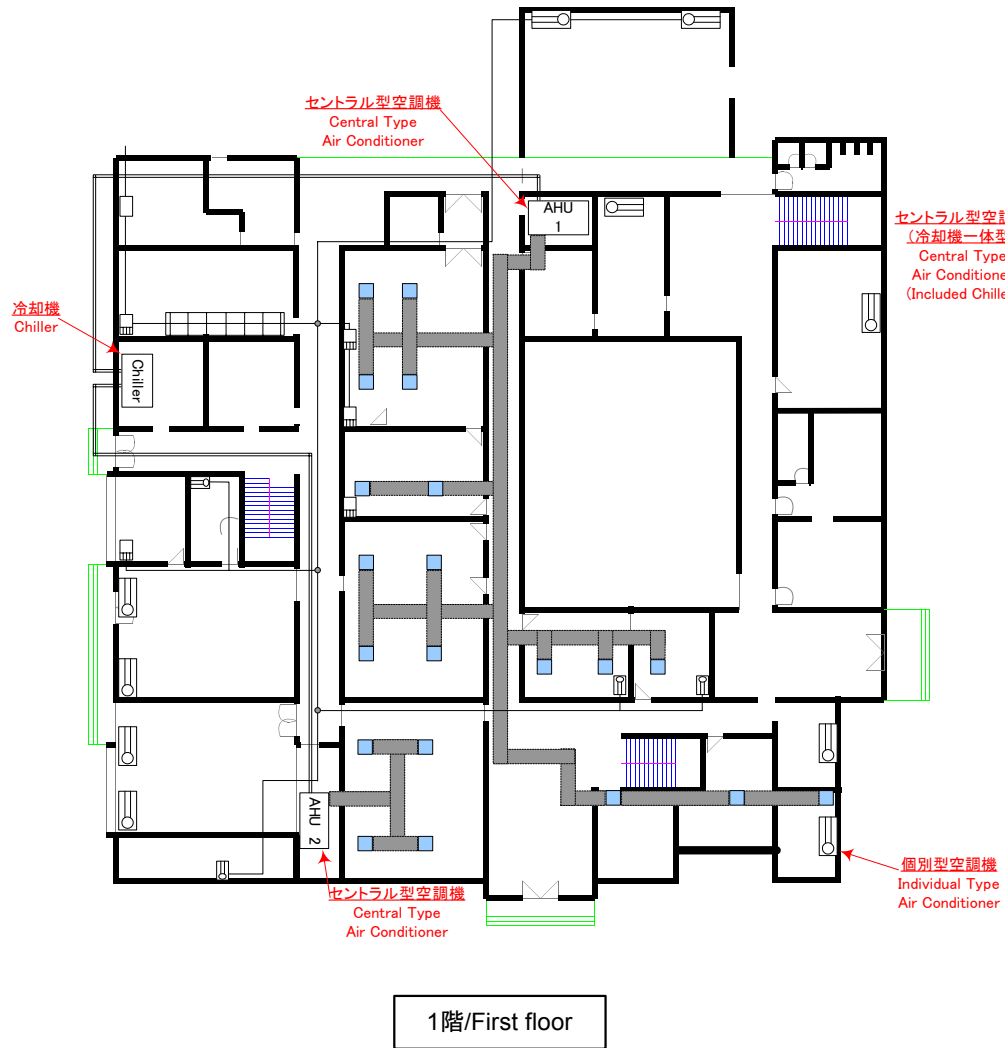
- | | | |
|--------------------------------------|------------------------------|------------------------------------|
| A/D : Analog to Digital Converter | DVE : Digital Video Effector | RX : Receiver |
| ADA : Audio Distribution Amplifier | EQA : Equalizer Amplifier | SG : SYNC Generator |
| ALC : Automatic Level Controller | FPU : Field Pick Up Unit | SPK : Speaker |
| C.G : Character Generator | LD : Light Director | SW : Switcher |
| C.GEN : Character Generator | MIC : Microphone | TB : Talk Back |
| CCU : Camera Control Unit | MON : Monitor | TEL PIC : Telephone Pick Up |
| CM : Color Monitor | OB : Outside Broadcasting | TRK : Trunk Line |
| D/A : Digital to Analog Converter | PD : Producer | TX : Transmitter |
| DA : Distribution Amplifier | PGM : Program | VDA : Video Distribution Amplifier |
| DDA : Digital Distribution Amplifier | PVW : Preview | VE : Video Engineer |
| | | VS : Vector Scope |
| | | VU : Volume Meter |
| | | WFM : Wave From Monitor |



E-01: 電力系統図
System line diagram of Power supply system



2-53



A-01: 空調設備・ダクト配置図
Ducting layout of Air conditioning system