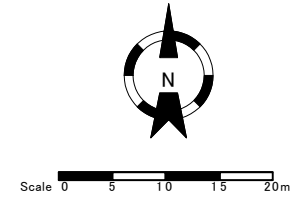
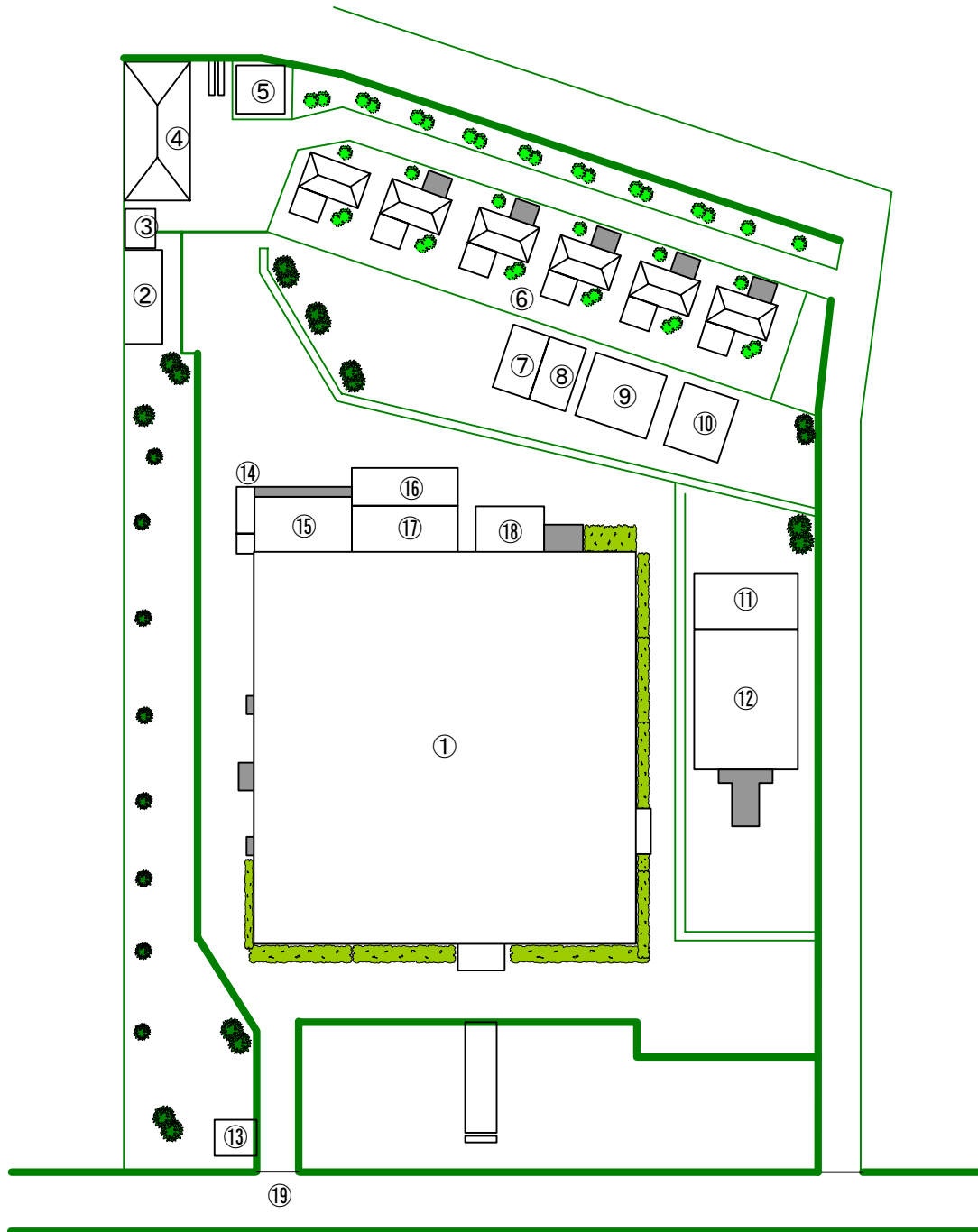


### 3-2-3 基本設計図

本計画の基本設計図は以下に示すとおりである。

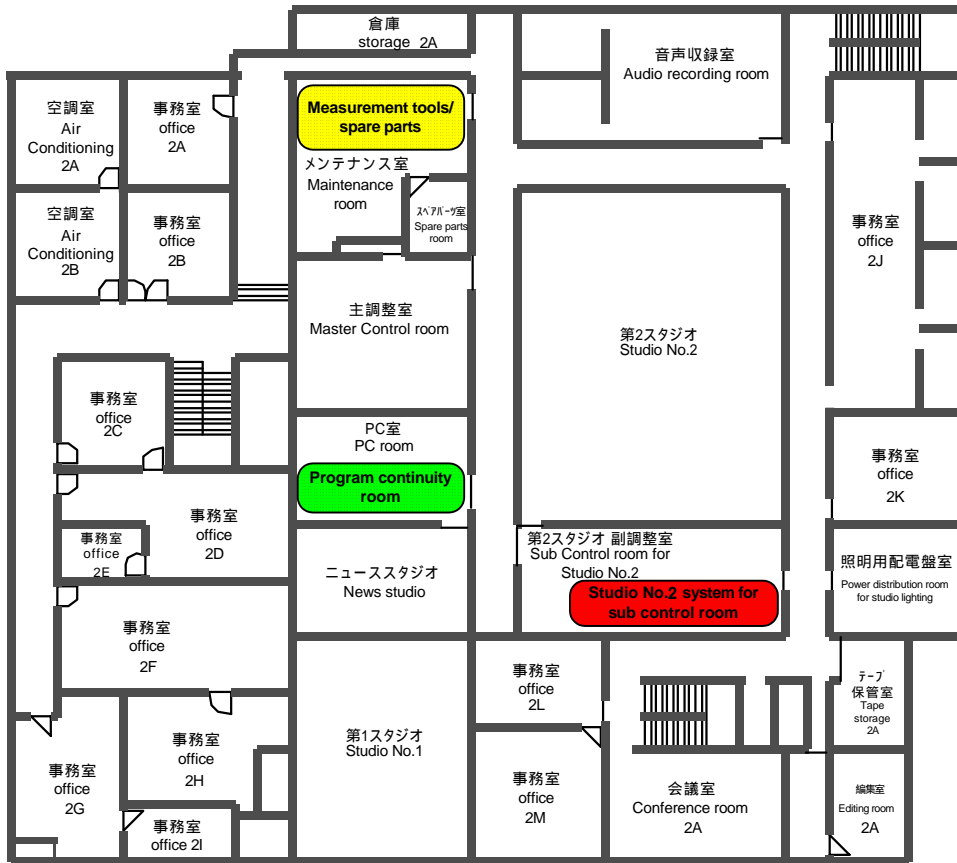
G-01	TVRI マカッサル放送局敷地図
G-02	TVRI マカッサル放送局 局舎内 配置図
G-03	機材構成図 (第2スタジオ・PC室)
G-04	機材構成図 (編集室)
G-05	機材構成図 (取材カメラ)
L-01	第2スタジオ・副調整室 配置計画図
L-02	PC室 配置計画図
L-03	ニューススタジオ 配置計画図
L-04	1対1 編集機室 配置計画図 (既設事務室1J)
Sy-01	第2スタジオ 映像系 システムブロック計画図
Sy-02	第2スタジオ 音声系 システムブロック計画図
Sy-03	第2スタジオ インターカムシステムブロック計画図
Sy-04	PC室 出力スイッチャー システムブロック計画図
Sy-05	PC室 映像系 システムブロック計画図
Sy-06	PC室 音声系 システムブロック計画図
Sy-07	PC室 インターカムシステムブロック計画図
E-01	電力系統図
A-01	空調設備・ダクト配置図



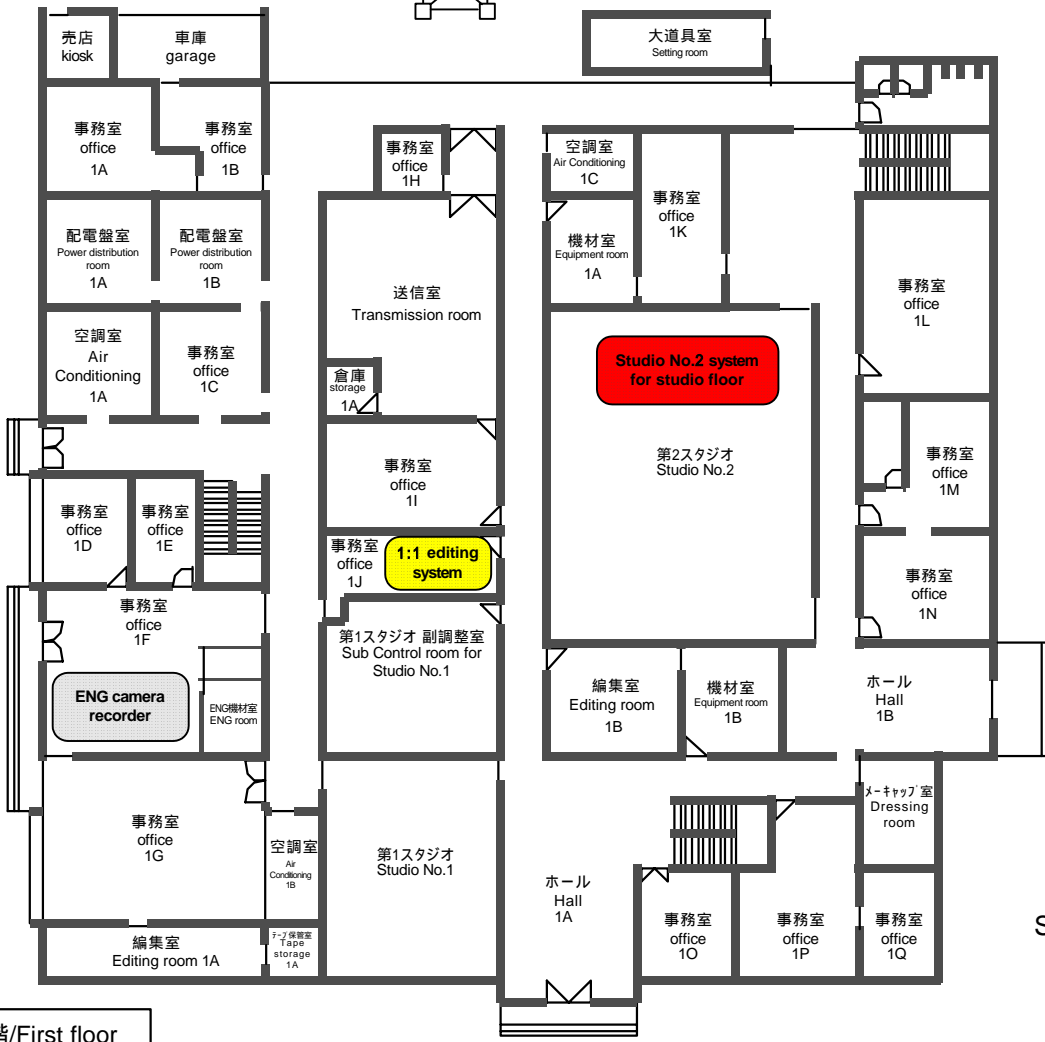
**Correspondence/対応表**

- ① Station building/局舎
- ② Generator house/発電機室
- ③ Transformer house/変圧器室
- ④ Garage/車庫
- ⑤ Security post/守衛室
- ⑥ Accommodations/宿舎
- ⑦ Computer workshop/コンピューター修理室
- ⑧ Setting material warehouse/大道具室
- ⑨ Setting material workshop/大道具工作室
- ⑩ Official's lady office/女性職員用事務室
- ⑪ Office of TVRI Division VI/TVRI第4事業部事務所
- ⑫ Ditto/同上
- ⑬ Security post/守衛室
- ⑭ Kiosk/売店
- ⑮ Garage/車庫
- ⑯ Ditto/同上
- ⑰ Transmission tower/送信タワー
- ⑱ Setting room/大道具室
- ⑲ Main gate/正門

G-01 TVRIマカッサル放送局敷地図  
 General layout of TVRI Makassar  
 Station



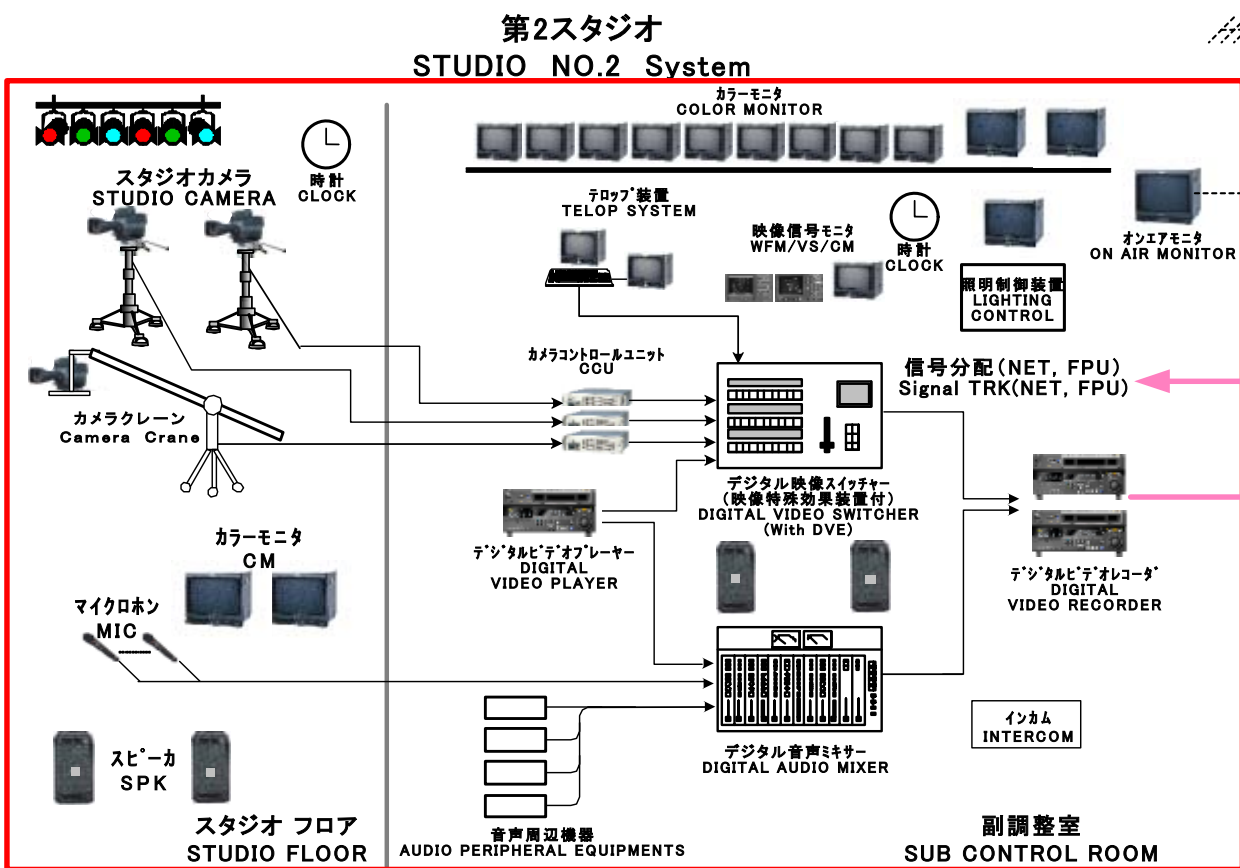
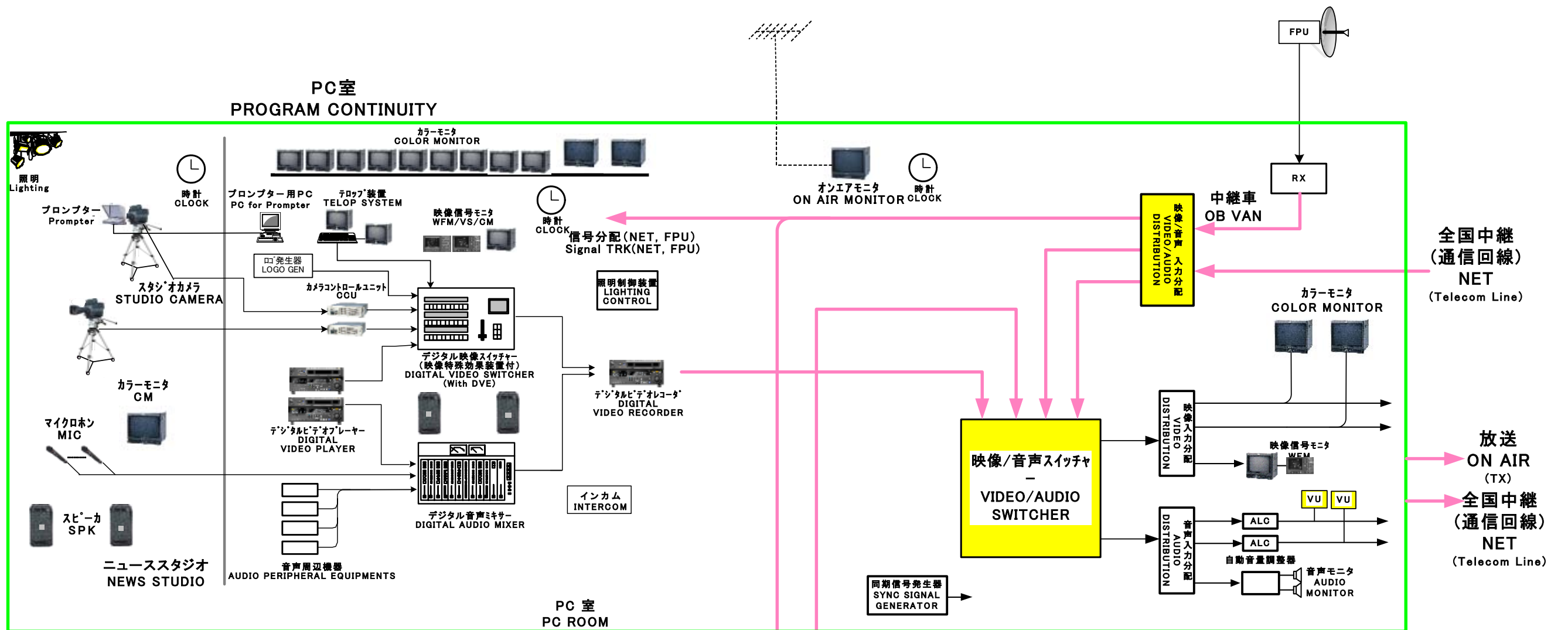
2階/Second floor



1階/First floor

Scale: 1/300

G-02 TVRIマカッサル放送局 局舎内 配置図  
General layout of TVRI Makassar  
Station

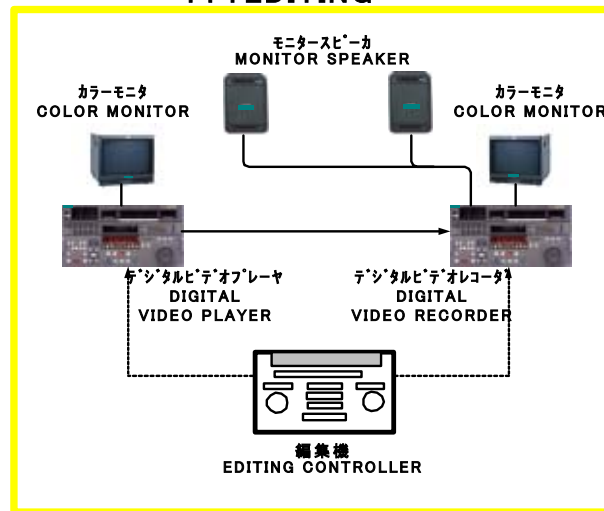


Abbreviation (略語集)

- |                                      |                              |                                    |
|--------------------------------------|------------------------------|------------------------------------|
| A/D : Analog to Digital Converter    | DVE : Digital Video Effector | RX : Receiver                      |
| ADA : Audio Distribution Amplifier   | EQA : Equalizer Amplifier    | SG : SYNC Generator                |
| ALC : Automatic Level Controller     | FPU : Field Pick Up Unit     | SPK : Speaker                      |
| C.G : Character Generator            | LD : Light Director          | SW : Switcher                      |
| C.GEN : Character Generator          | MIC : Microphone             | TB : Talk Back                     |
| CCU : Camera Control Unit            | MON : Monitor                | TEL PIC : Telephone Pick Up        |
| CM : Color Monitor                   | OB : Outside Broadcasting    | TRK : Trunk Line                   |
| D/A : Digital to Analog Converter    | PD : Producer                | TX : Transmitter                   |
| DA : Distribution Amplifier          | PGM : Program                | VDA : Video Distribution Amplifier |
| DDA : Digital Distribution Amplifier | PVW : Preview                | VE : Video Engineer                |
|                                      |                              | VS : Vector Scope                  |
|                                      |                              | VU : Volume Meter                  |
|                                      |                              | WFM : Wave From Monitor            |

G-03 機材構成図 (第2スタジオ・PC室)  
Composition of TV Broadcasting System  
for TVRI MAKASSAR (Program Contiunity, Studio No.2)

1対1編集システム  
1:1 EDITING (2 sets)



G-04 機材構成図 (編集室)

Composition of TV Broadcasting System  
for TVRI MAKASSAR (1:1 Editing System)

**ENGカメラ  
ENG CAMERA RECORDER  
(2sets)**



カメラ/ズームレンズ  
Camera/Zoom Lens



ワイヤレスマイク  
Wireless Mic.



三脚  
Tripod

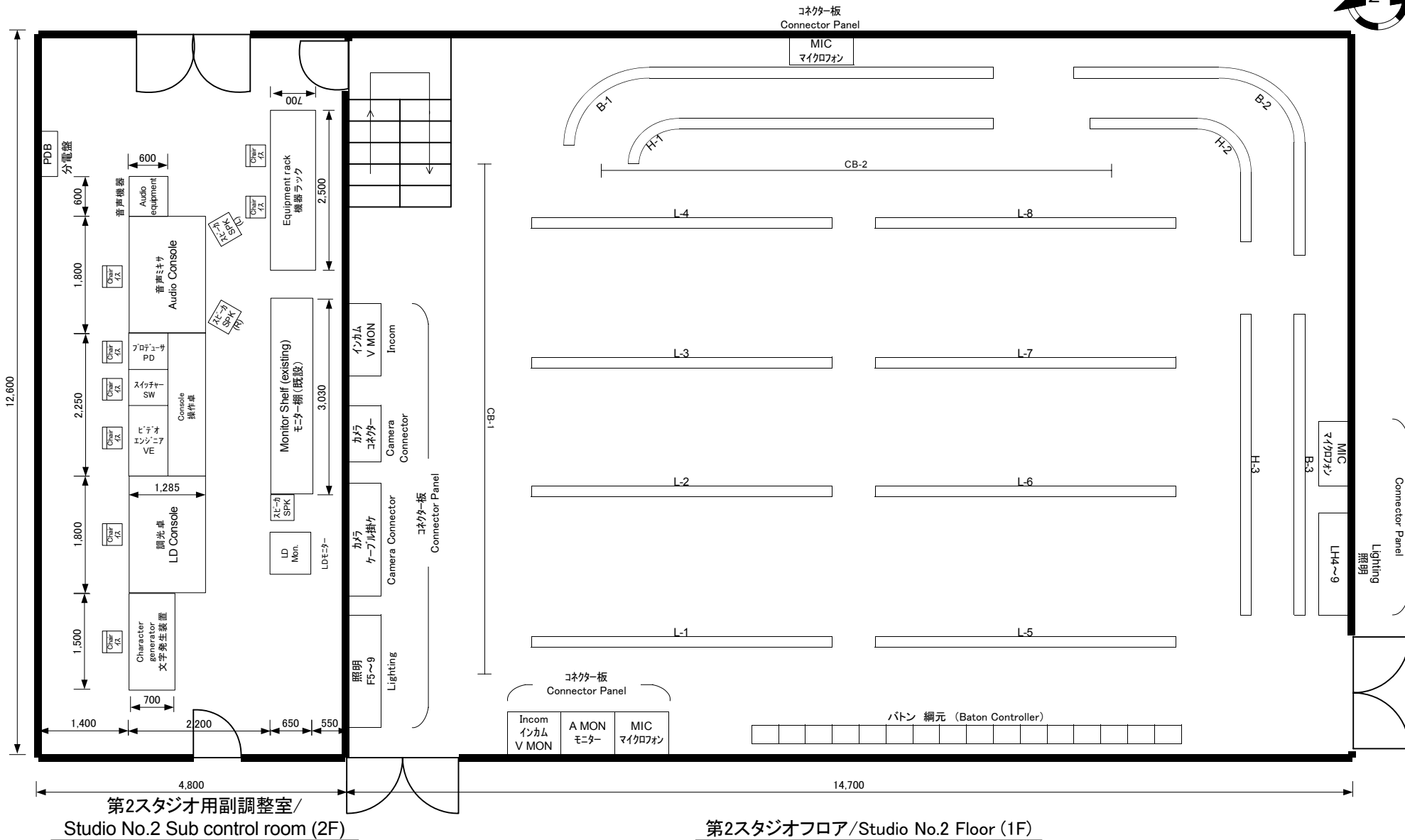
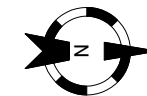


カメラ照明  
Camera Lighting

G-05 機材構成図（取材カメラ）

Composition of TV Broadcasting System  
for TVRI MAKASSAR (ENG Camera Recorder)

---

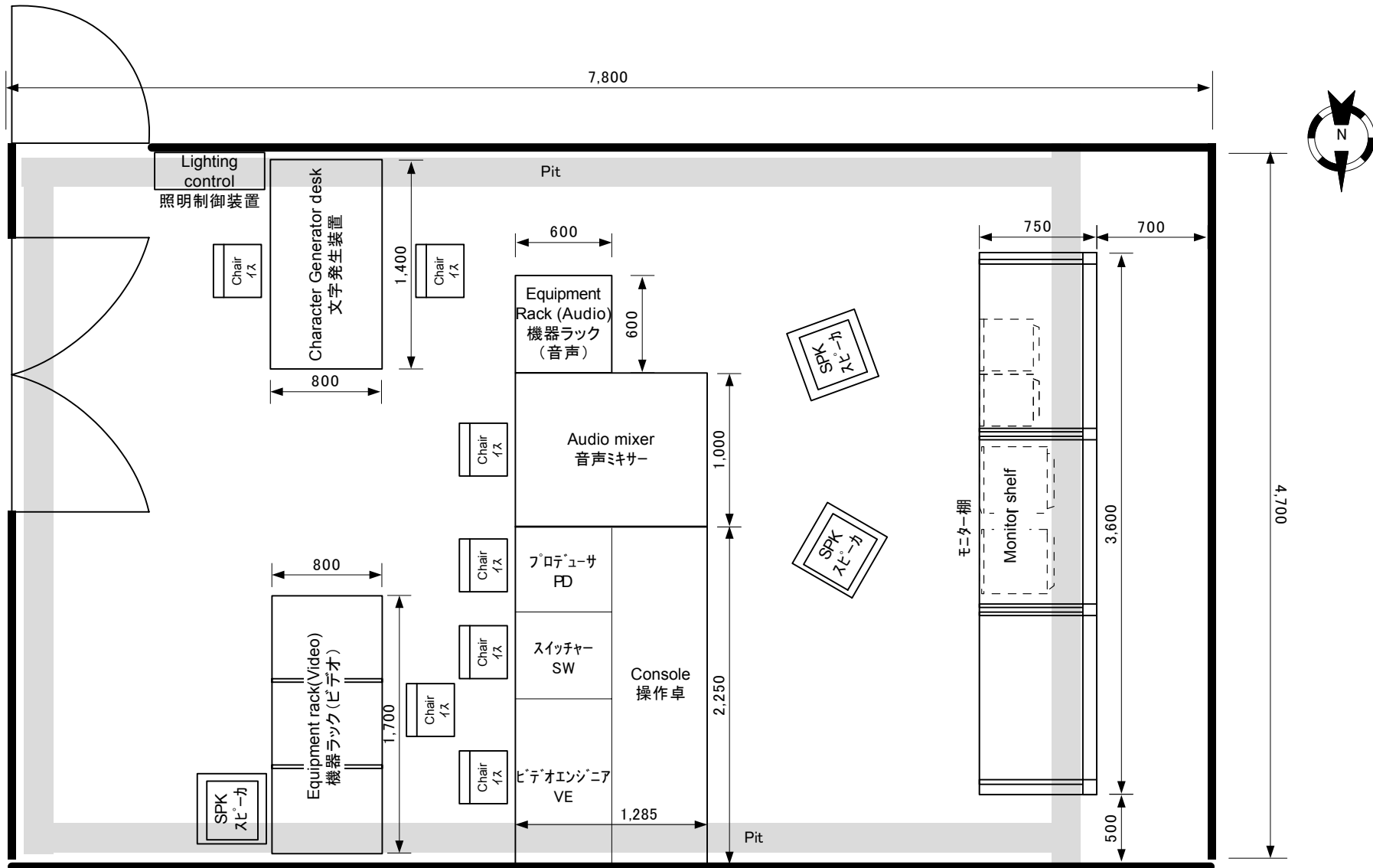


Abbreviation (略語集)

- |                     |                     |
|---------------------|---------------------|
| LD : Light Director | PD : Producer       |
| MIC : Microphone    | SPK : Speaker       |
| MON : Monitor       | SW : Switcher       |
|                     | VE : Video Engineer |

L-01 第2スタジオ・副調整室 配置計画図

Layout plan of Studio No.2 and Sub control room



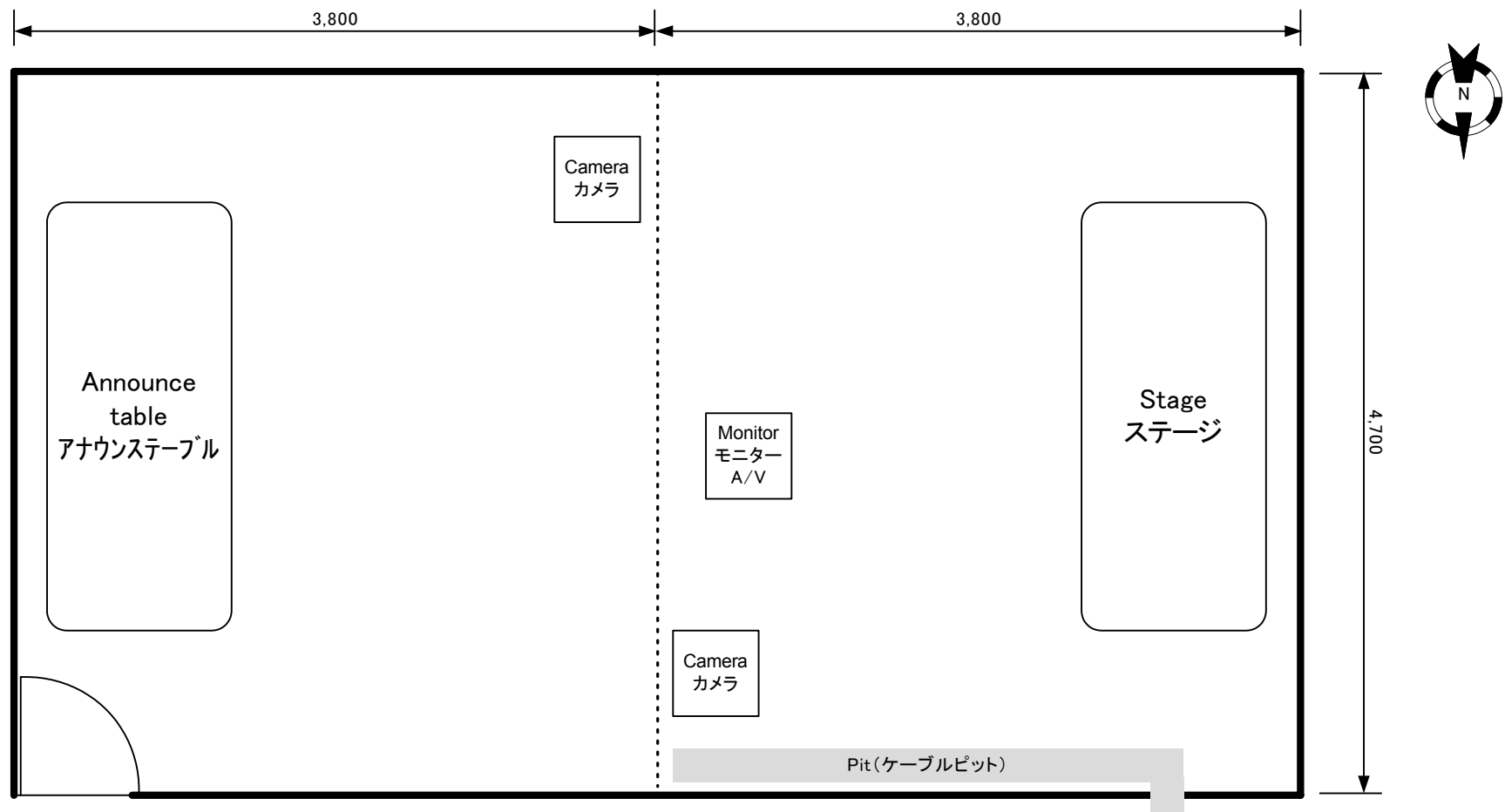
Abbreviation (略語集)

- PD : Producer
- SPK : Speaker
- SW : Switcher
- VE : Video Engineer

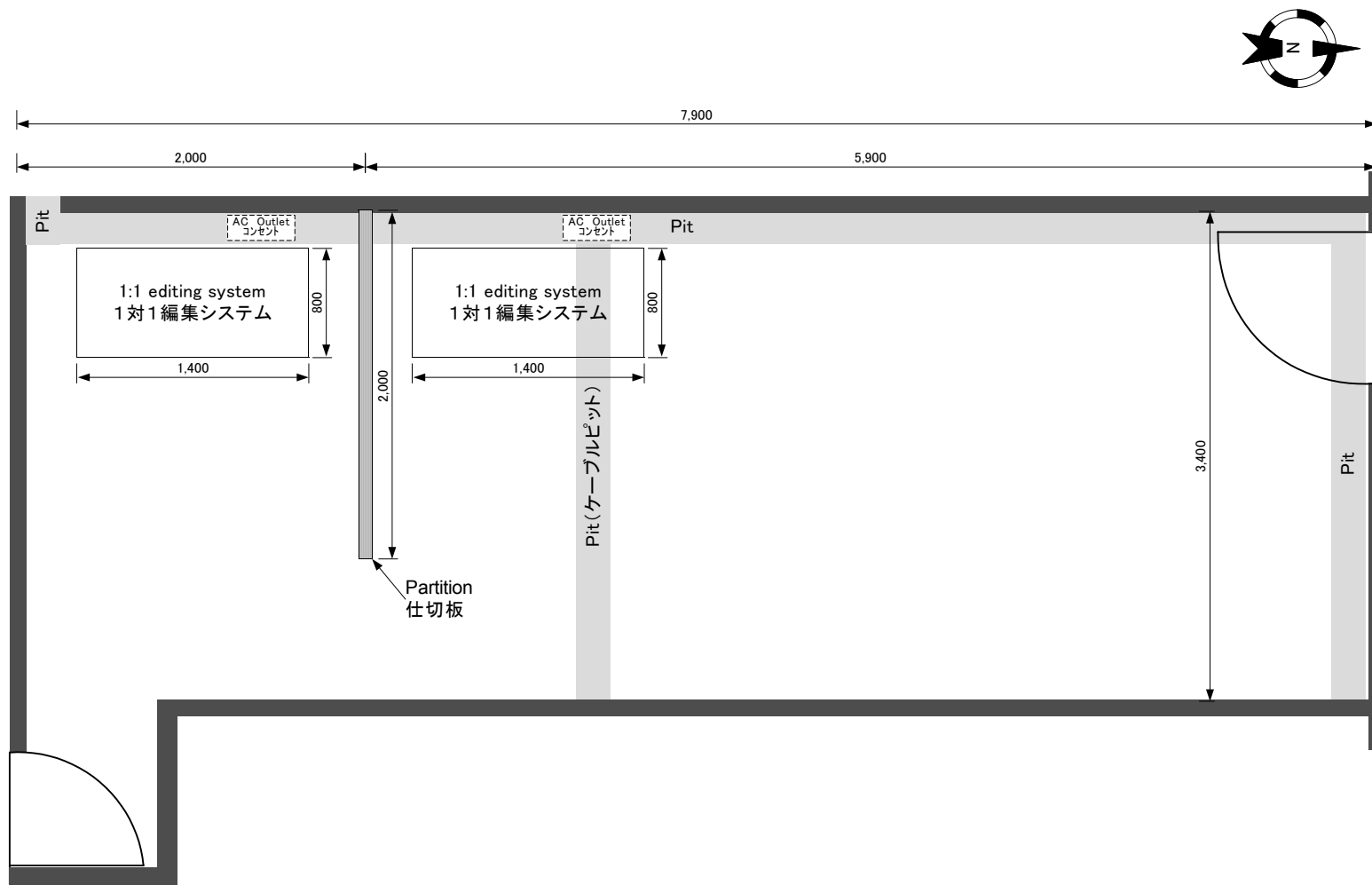
L-02 PC室 配置計画図

Layout plan of Program continuity room



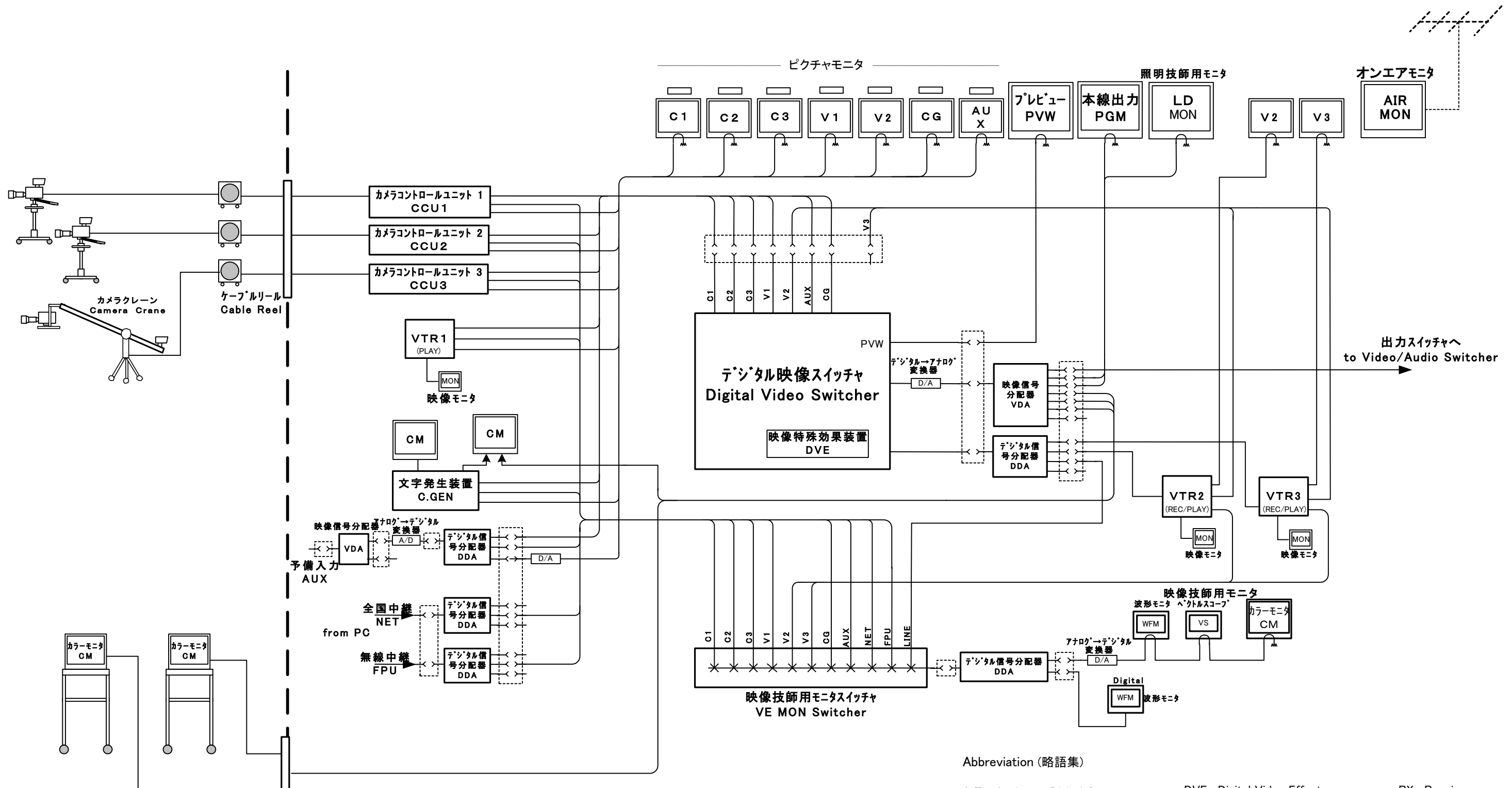


L-03 ニューススタジオ配置計画図  
Layout of  
News studio



L-04 1対1編集機室 配置計画図(既設事務室1J)

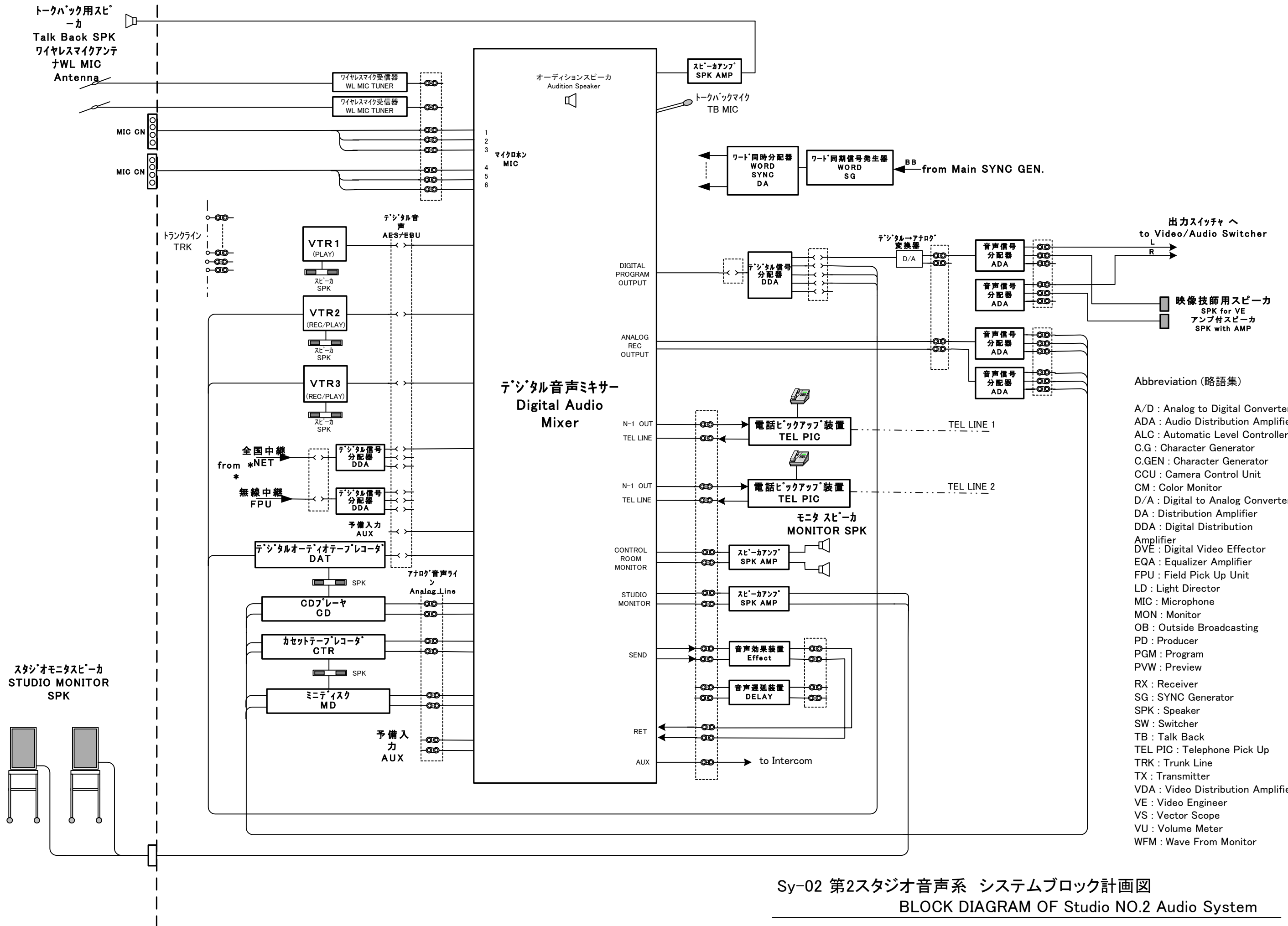
Layout plan of 1:1 Editing System room (Existing Office 1J)



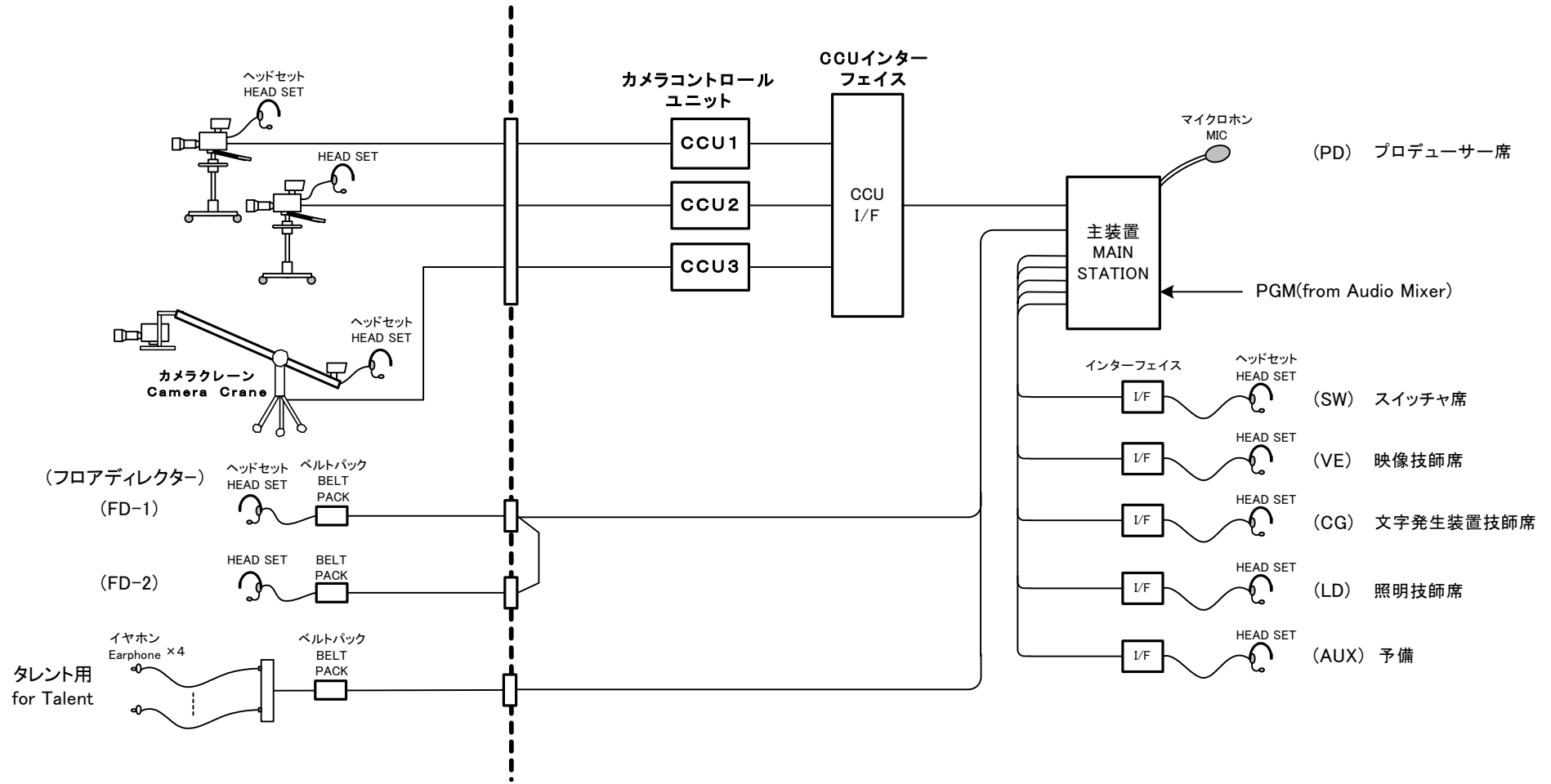
Abbreviation (略語集)

- |                                      |                              |                                    |
|--------------------------------------|------------------------------|------------------------------------|
| A/D : Analog to Digital Converter    | DVE : Digital Video Effector | RX : Receiver                      |
| ADA : Audio Distribution Amplifier   | EQA : Equalizer Amplifier    | SG : SYNC Generator                |
| ALC : Automatic Level Controller     | FPU : Field Pick Up Unit     | SPK : Speaker                      |
| C.G : Character Generator            | LD : Light Director          | SW : Switcher                      |
| C.GEN : Character Generator          | MIC : Microphone             | TB : Talk Back                     |
| CCU : Camera Control Unit            | MON : Monitor                | TEL PIC : Telephone Pick Up        |
| CM : Color Monitor                   | OB : Outside Broadcasting    | TRK : Trunk Line                   |
| D/A : Digital to Analog Converter    | PD : Producer                | TX : Transmitter                   |
| DA : Distribution Amplifier          | PGM : Program                | VDA : Video Distribution Amplifier |
| DDA : Digital Distribution Amplifier | PVW : Preview                | VE : Video Engineer                |
|                                      |                              | VS : Vector Scope                  |
|                                      |                              | VU : Volume Meter                  |
|                                      |                              | WFM : Wave From Monitor            |

Sy-01 第2スタジオ映像系 システムブロック計画図  
BLOCK DIAGRAM OF Studio NO.2 Video System



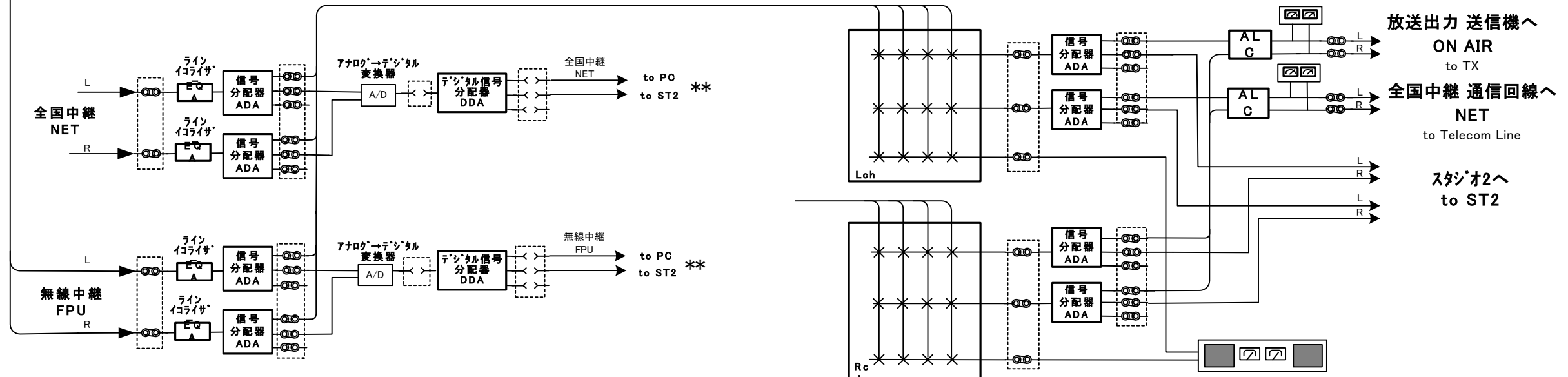
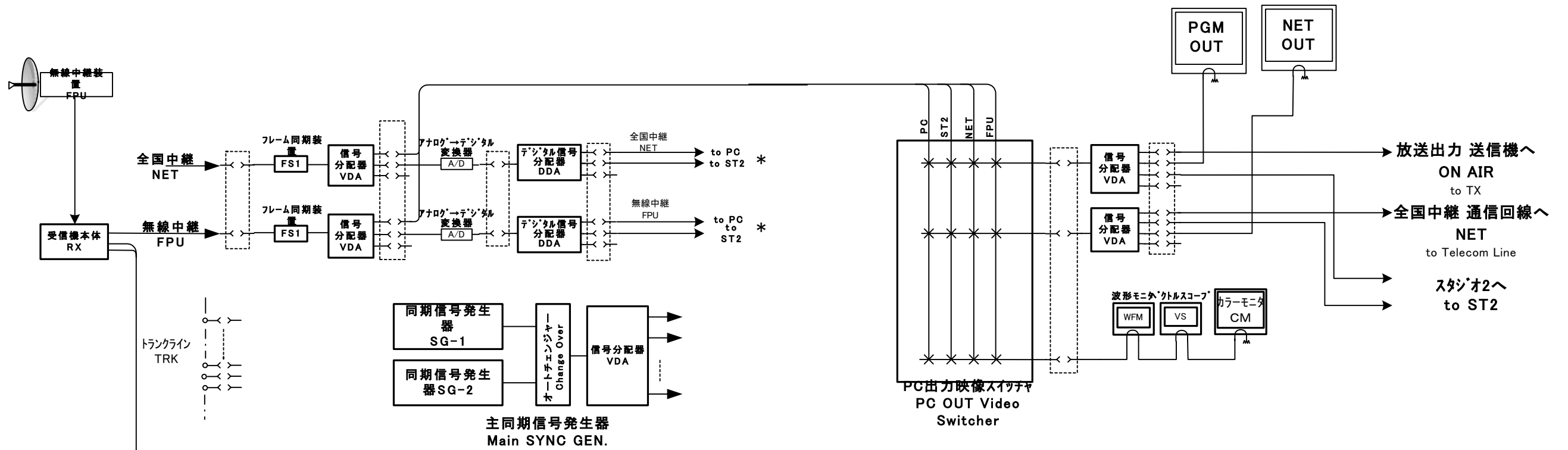
Sy-02 第2スタジオ音声系 システムブロック計画図  
BLOCK DIAGRAM OF Studio NO.2 Audio System



Abbreviation (略語集)

- |                                      |                              |                                    |
|--------------------------------------|------------------------------|------------------------------------|
| A/D : Analog to Digital Converter    | DVE : Digital Video Effector | RX : Receiver                      |
| ADA : Audio Distribution Amplifier   | EQA : Equalizer Amplifier    | SG : SYNC Generator                |
| ALC : Automatic Level Controller     | FPU : Field Pick Up Unit     | SPK : Speaker                      |
| C.G : Character Generator            | LD : Light Director          | SW : Switcher                      |
| C.GEN : Character Generator          | MIC : Microphone             | TB : Talk Back                     |
| CCU : Camera Control Unit            | MON : Monitor                | TEL PIC : Telephone Pick Up        |
| CM : Color Monitor                   | OB : Outside Broadcasting    | TRK : Trunk Line                   |
| D/A : Digital to Analog Converter    | PD : Producer                | TX : Transmitter                   |
| DA : Distribution Amplifier          | PGM : Program                | VDA : Video Distribution Amplifier |
| DDA : Digital Distribution Amplifier | PVW : Preview                | VE : Video Engineer                |
|                                      |                              | VS : Vector Scope                  |
|                                      |                              | VU : Volume Meter                  |
|                                      |                              | WFM : Wave From Monitor            |

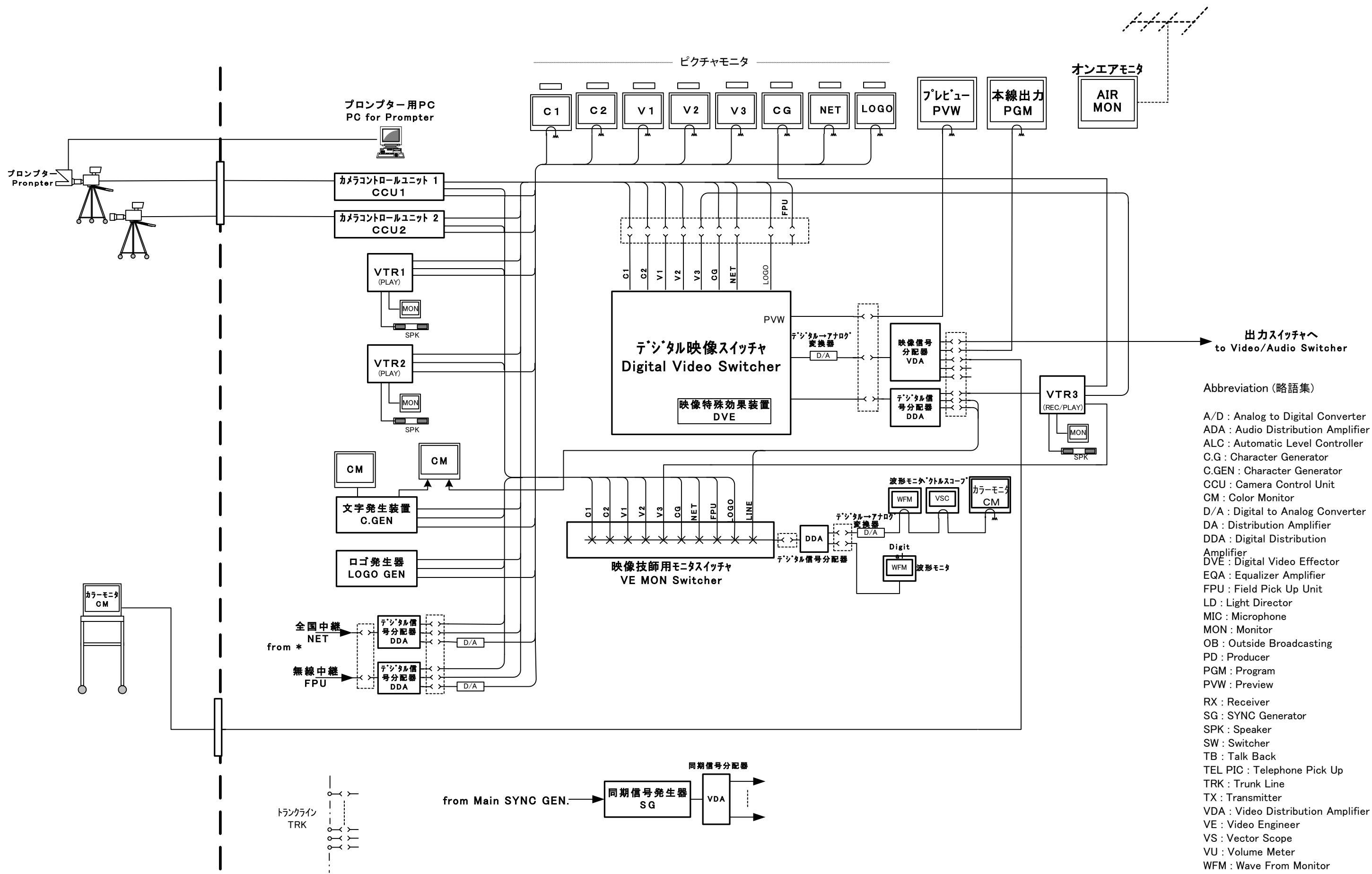
Sy-03 第2スタジオ インターカム システムブロック計画図  
BLOCK DIAGRAM OF Intercom System for ST2



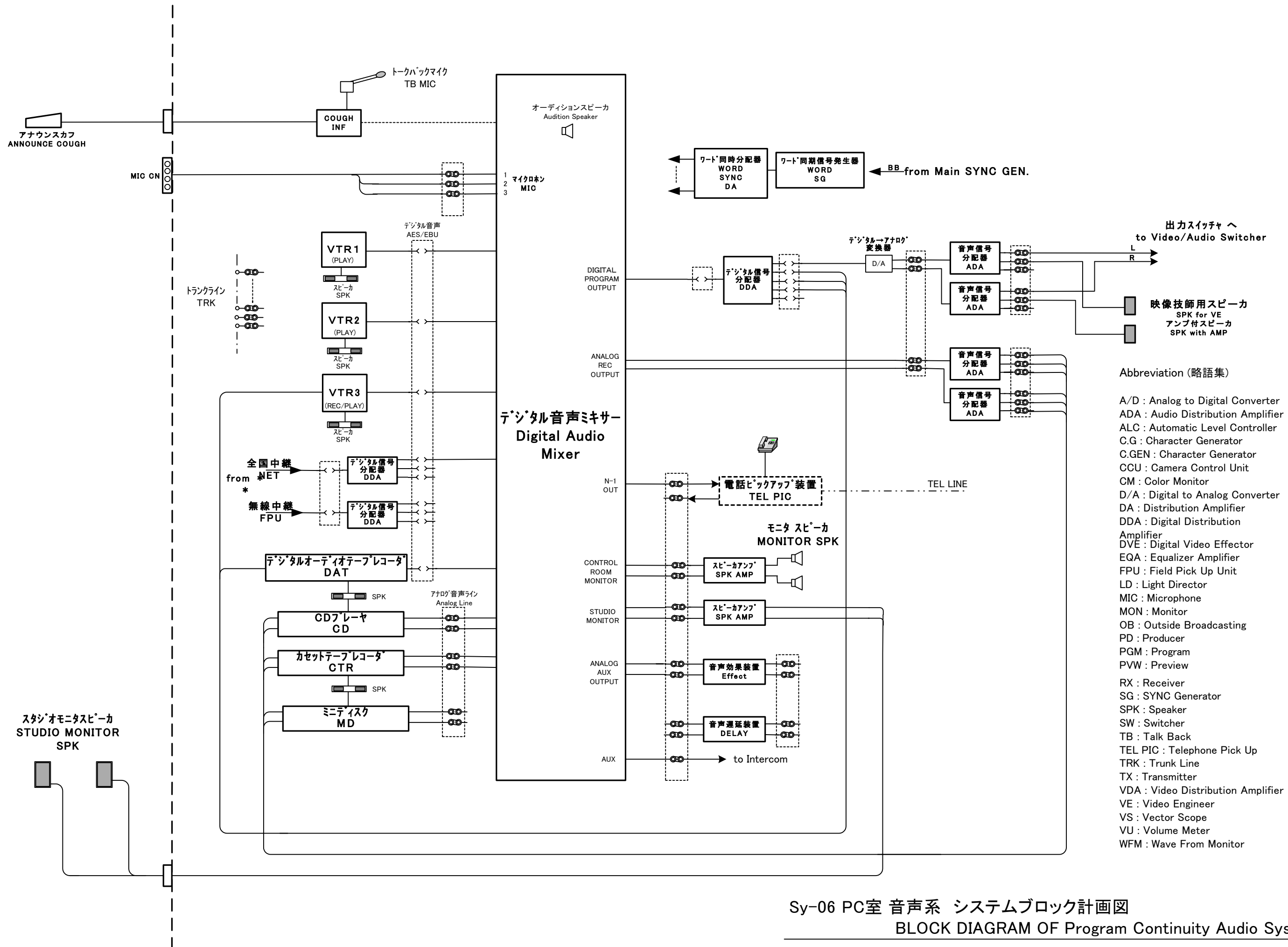
Abbreviation (略語集)

- |                |                                      |                              |                                    |
|----------------|--------------------------------------|------------------------------|------------------------------------|
| トランクライン<br>TRK | A/D : Analog to Digital Converter    | DVE : Digital Video Effector | RX : Receiver                      |
|                | ADA : Audio Distribution Amplifier   | EQA : Equalizer Amplifier    | SG : SYNC Generator                |
|                | ALC : Automatic Level Controller     | FPU : Field Pick Up Unit     | SPK : Speaker                      |
|                | C.G : Character Generator            | LD : Light Director          | SW : Switcher                      |
|                | C.GEN : Character Generator          | MIC : Microphone             | TB : Talk Back                     |
|                | CCU : Camera Control Unit            | MON : Monitor                | TEL PIC : Telephone Pick Up        |
|                | CM : Color Monitor                   | OB : Outside Broadcasting    | TRK : Trunk Line                   |
|                | D/A : Digital to Analog Converter    | PD : Producer                | TX : Transmitter                   |
|                | DA : Distribution Amplifier          | PGM : Program                | VDA : Video Distribution Amplifier |
|                | DDA : Digital Distribution Amplifier | PVW : Preview                | VE : Video Engineer                |
|                |                                      |                              | VS : Vector Scope                  |
|                |                                      |                              | VU : Volume Meter                  |
|                |                                      |                              | WFM : Wave From Monitor            |

Sy-04 PC室 出力スイッチャ システムブロック計画図  
BLOCK DIAGRAM OF PC OUT Switcher System

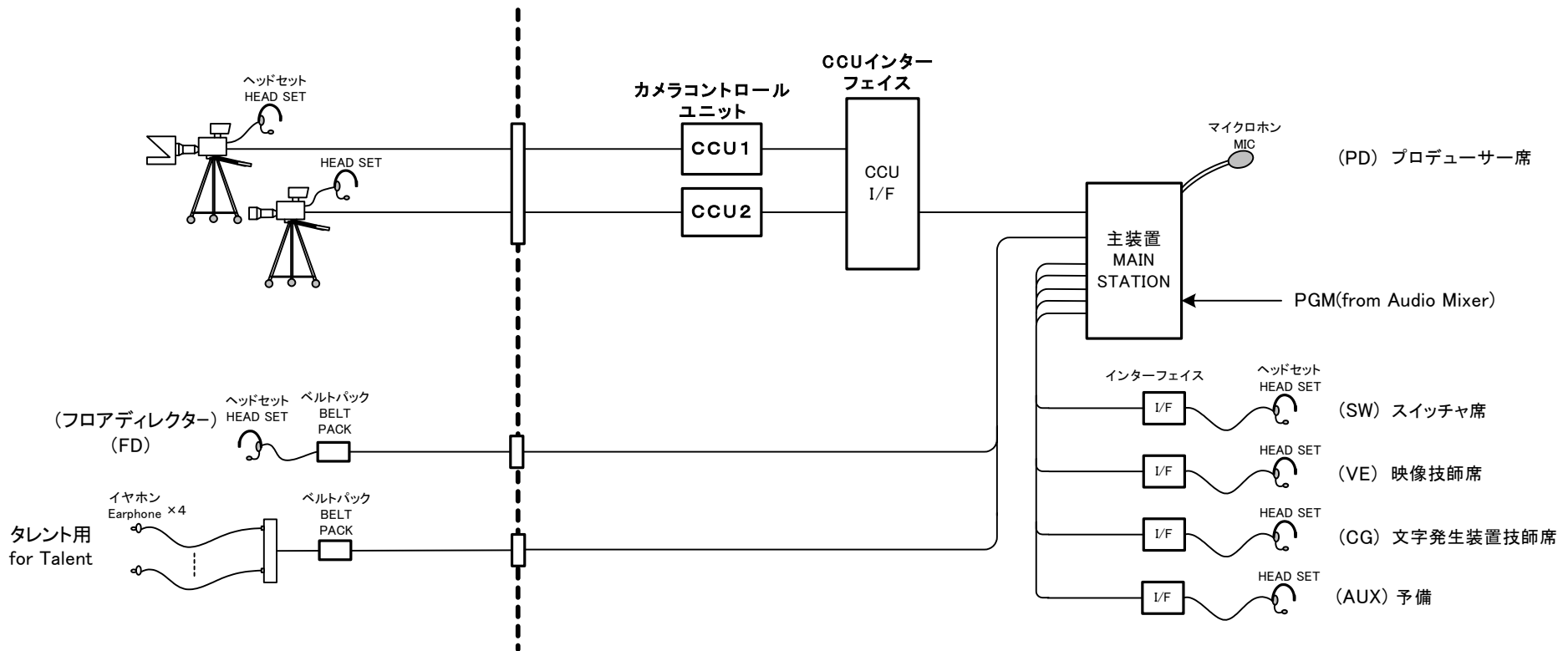


Sy-05 PC室 映像系 システムブロック計画図  
BLOCK DIAGRAM OF Program Continuity Video  
System



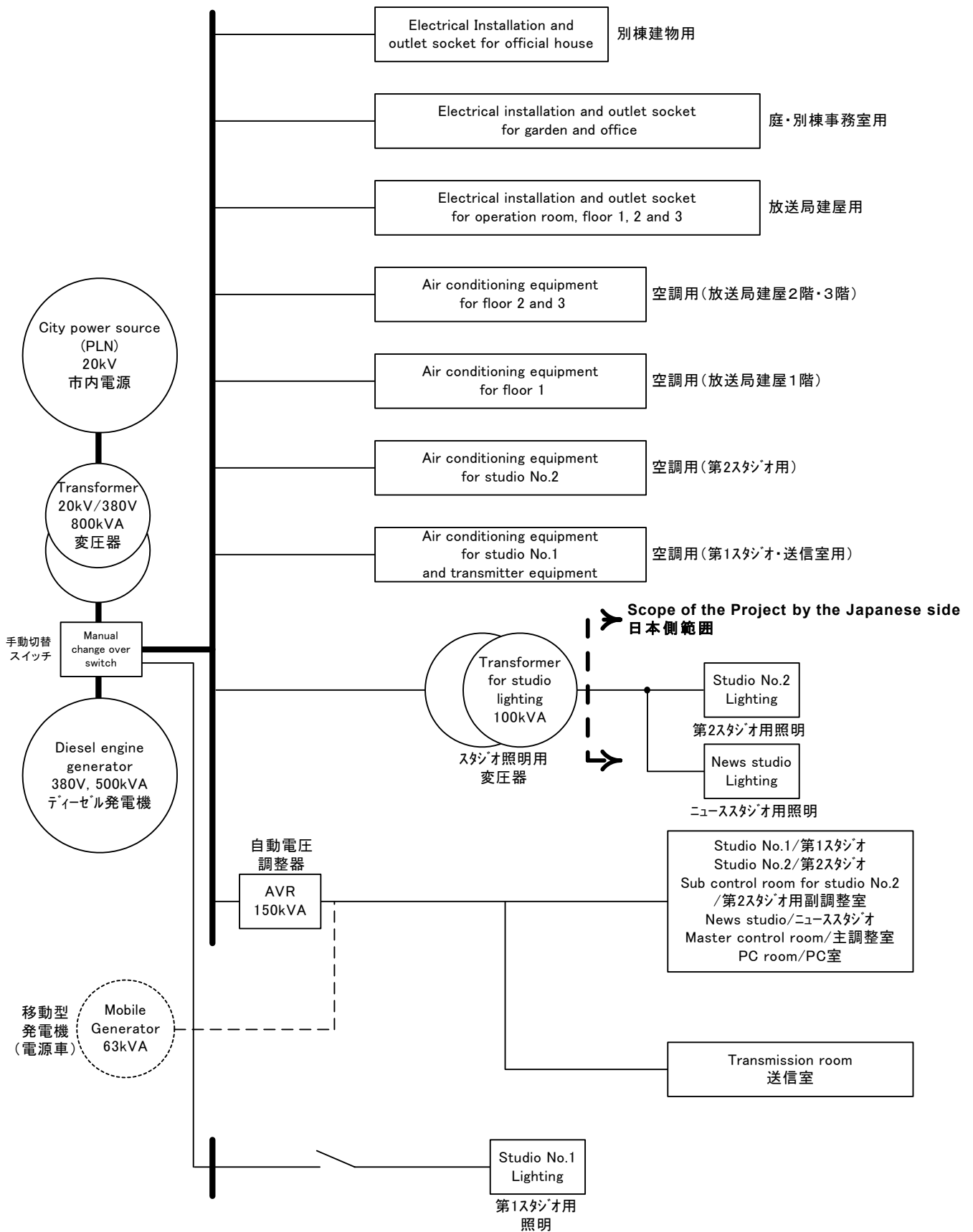
Sy-06 PC室 音声系 システムブロック計画図  
BLOCK DIAGRAM OF Program Continuity Audio System





Abbreviation (略語集)

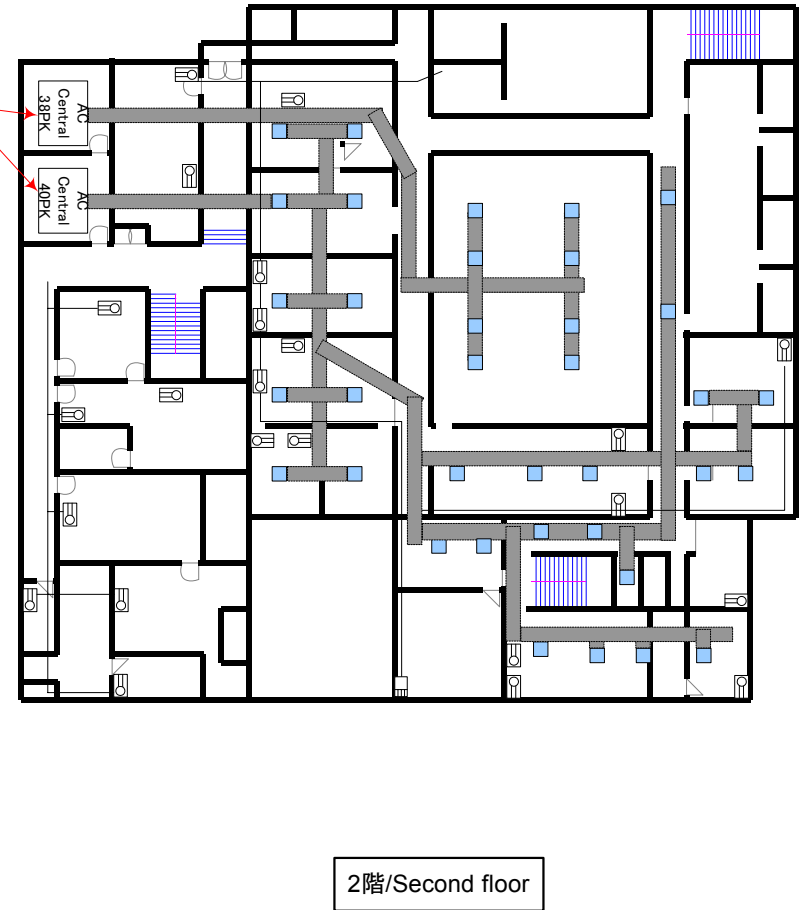
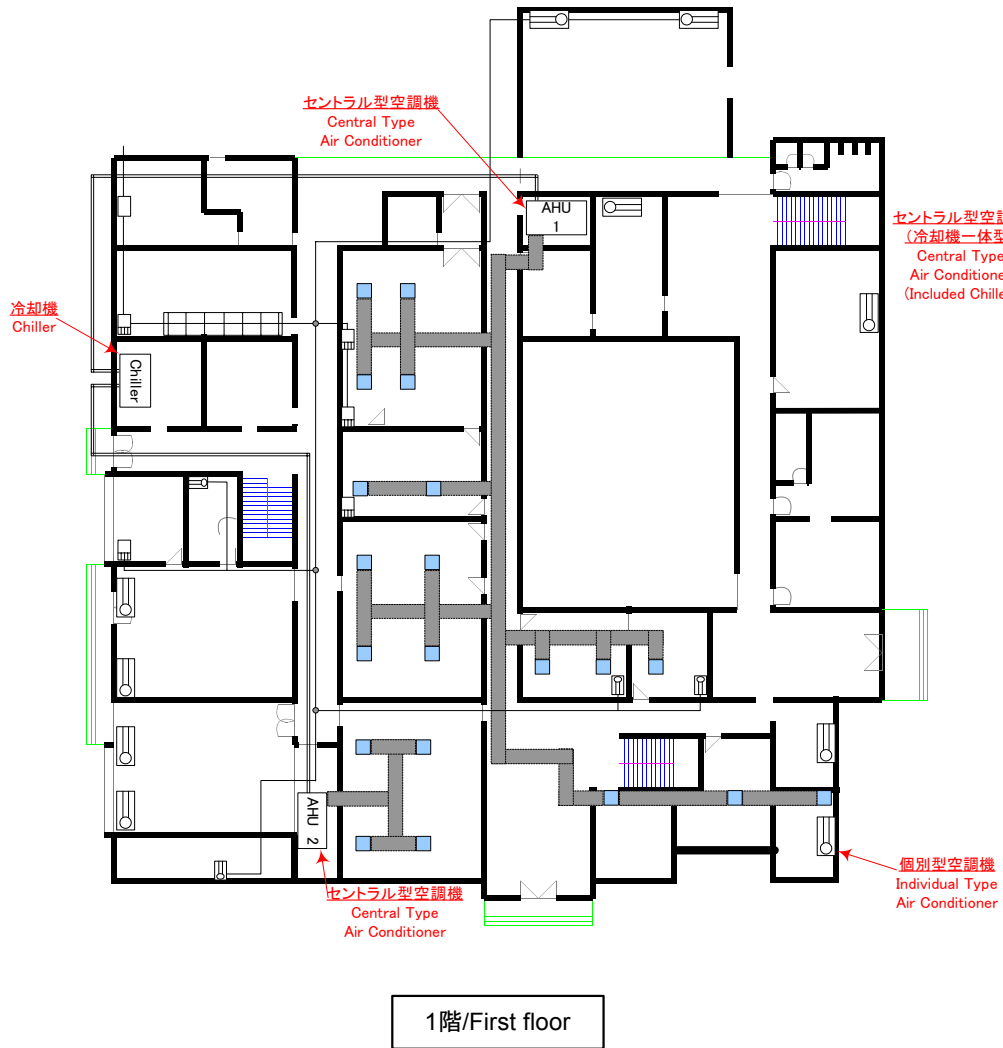
- |                                      |                              |                                    |
|--------------------------------------|------------------------------|------------------------------------|
| A/D : Analog to Digital Converter    | DVE : Digital Video Effector | RX : Receiver                      |
| ADA : Audio Distribution Amplifier   | EQA : Equalizer Amplifier    | SG : SYNC Generator                |
| ALC : Automatic Level Controller     | FPU : Field Pick Up Unit     | SPK : Speaker                      |
| C.G : Character Generator            | LD : Light Director          | SW : Switcher                      |
| C.GEN : Character Generator          | MIC : Microphone             | TB : Talk Back                     |
| CCU : Camera Control Unit            | MON : Monitor                | TEL PIC : Telephone Pick Up        |
| CM : Color Monitor                   | OB : Outside Broadcasting    | TRK : Trunk Line                   |
| D/A : Digital to Analog Converter    | PD : Producer                | TX : Transmitter                   |
| DA : Distribution Amplifier          | PGM : Program                | VDA : Video Distribution Amplifier |
| DDA : Digital Distribution Amplifier | PVW : Preview                | VE : Video Engineer                |
|                                      |                              | VS : Vector Scope                  |
|                                      |                              | VU : Volume Meter                  |
|                                      |                              | WFM : Wave From Monitor            |



E-01: 電力系統図  
System line diagram of Power supply system



3-48



A-01: 空調設備・ダクト配置図  
Ducting layout of Air conditioning system