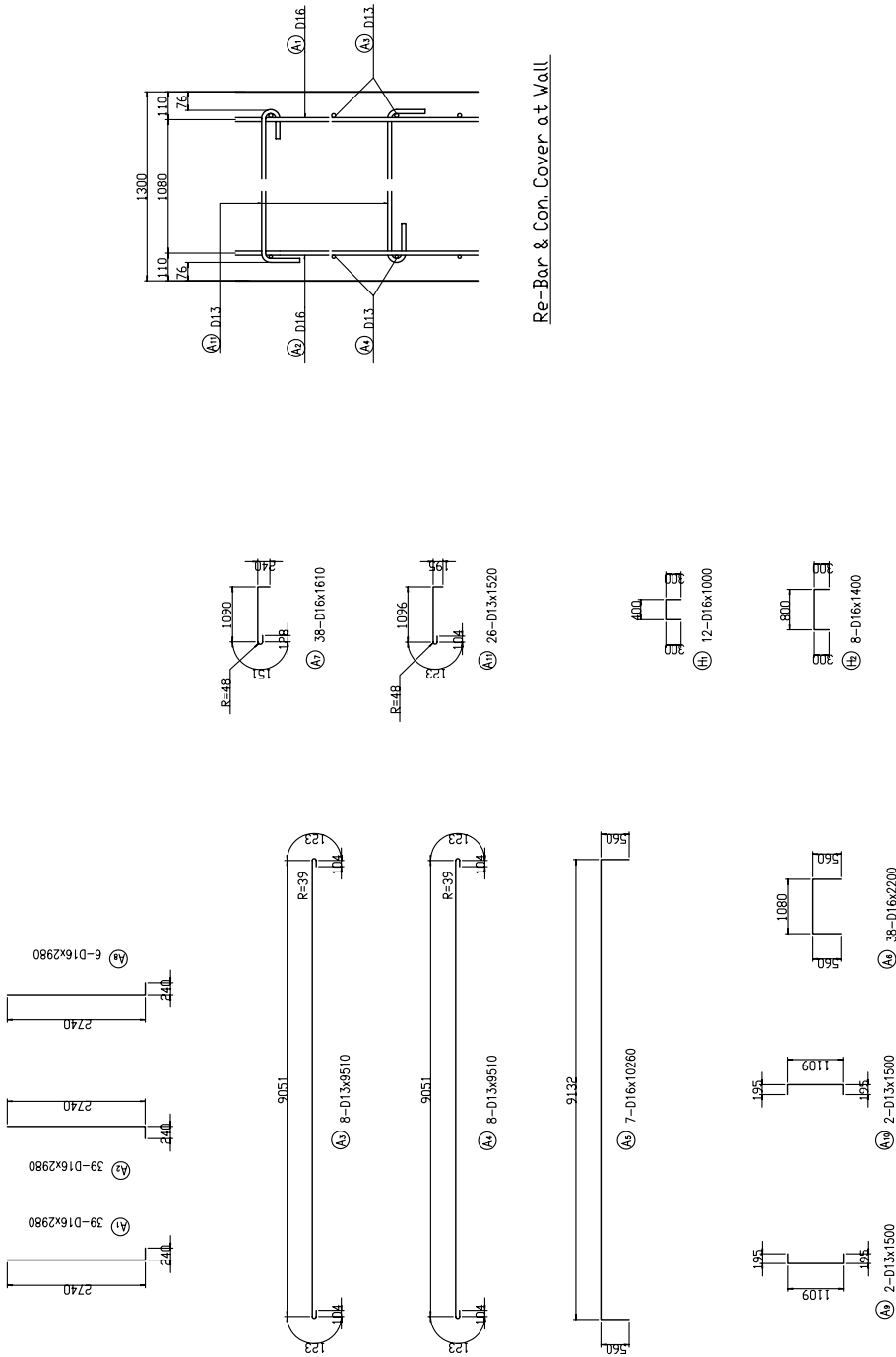



BAR ARRANGEMENT OF ABUTMENT A1,A2 (3) SCALE 1 : 50



Re-Bar & Con. Cover at Wall

Note
All dimensions are shown in millimeter
unless otherwise indicated.

 <p>GOVERNMENT OF THE REPUBLIC OF VANUATU PUBLIC WORKS DEPARTMENT</p>	<p>JAPAN INTERNATIONAL COOPERATION AGENCY KATAHIRA & ENGINEERS INTERNATIONAL</p>	<p>PROJECT BASIC DESIGN STUDY ON THE PROJECT FOR THE REHABILITATION OF BRIDGES ON THE RING ROAD IN THE EFATE ISLAND</p>	<p>TITLE : BAR ARRANGEMENT OF ABUTMENT A1,A2 (3) (RENTAPAO BRIDGE)</p>	<p>DRAWING NO. 34</p>
				<p>34</p>

MATERIAL LIST OF SUBSTRUCTURE

LIST OF REINFORCEMENT

MARK	SIZE	LENGTH	NL	UNIT WT.	WT/DNE	WEIGHT	REMARKS
P1	D13	1570	39	0.995	1.56	61	I
2	"	1570	73	"	1.56	114	I
3	"	9100	3	"	9.05	27	I
4	"	9100	3	"	9.05	27	I
5	"	9110	2	"	9.06	18	I
6	"	1660	4	"	1.65	7	I
7	"	630	39	"	0.63	25	I
8	"	1420	4	"	1.41	6	I
9	"	590	9	"	0.59	5	I
							290 kg
A1	D16	2980	39	1.56	4.65	181	I
2	"	2980	39	"	4.65	181	I
3	D13	9510	8	0.995	9.46	76	I
4	"	9510	8	"	9.46	76	I
5	D16	10260	7	1.56	16.01	112	I
6	"	2200	38	"	3.43	130	I
7	"	1610	38	"	2.51	95	I
8	"	2980	6	"	4.65	28	I
9	D13	1500	2	0.995	1.49	3	I
10	"	1500	2	"	1.49	3	I
11	"	1520	26	"	1.51	39	I
							924 kg
H1	D16	1000	12	1.56	1.56	19	I
2	"	1400	8	"	2.18	17	I
							36 kg
F1	D16	3180	50	1.56	4.96	248	I
2	"	4100	40	"	6.40	256	I
3	"	1940	10	"	3.03	30	I
4	"	1000	36	"	1.56	56	I
5	"	580	4	"	0.90	4	I
6	D13	9100	9	0.995	9.05	81	I
7	"	9100	14	"	9.05	127	I
8	"	950	18	"	0.95	17	I
9	D19	9100	6	2.25	20.48	123	I
10	"	3310	6	"	7.45	45	I
11	D13	1120	10	0.995	1.11	11	I
12	D16	1210	10	1.56	1.89	19	I
13	"	1210	10	"	1.89	19	I
							1006 kg

MARK	SIZE	LENGTH	NL	UNIT WT.	WT/DNE	WEIGHT	REMARKS
K1	D13	1500	21	0.995	1.49	31	I
2	"	2400	4	"	2.39	10	I
							41 kg
W1	D16	2650	4	1.56	4.13	17	I
2	"	2570	5	"	4.01	20	I
3	D13	1600	8	0.995	1.59	13	I
4	D16	1540	4	1.56	2.40	10	I
5	"	2810	4	"	4.38	18	I
6	"	3930	2	"	6.13	12	I
7	D13	2600	4	0.995	2.59	10	I
8	"	2920	5	"	2.51	13	I
9	"	1600	8	"	1.59	13	I
10	"	570	9	"	0.57	5	I
11	"	550	9	"	0.55	5	I
12	"	410	4	"	0.41	2	I
							138 kg
K1	D13	1500	21	0.995	1.49	31	I
2	"	2400	4	"	2.39	10	I
							41 kg
W1	D16	2650	4	1.56	4.13	17	I
2	"	2570	5	"	4.01	20	I
3	D13	1600	8	0.995	1.59	13	I
4	D16	1540	4	1.56	2.40	10	I
5	"	2810	4	"	4.38	18	I
6	"	3930	2	"	6.13	12	I
7	D13	2600	4	0.995	2.59	10	I
8	"	2520	5	"	2.51	13	I
9	"	1600	8	"	1.59	13	I
10	"	570	9	"	0.57	5	I
11	"	550	9	"	0.55	5	I
12	"	410	4	"	0.41	2	I
							138 kg
K1	D13	1500	21	0.995	1.49	31	I
2	"	2400	4	"	2.39	10	I
							41 kg
REINFORCEMENT BAR							
D19	168	kg	X2	=	336	kg	
D16	1549	kg	X2	=	3098	kg	
D13	927	kg	X2	=	1854	kg	
TOTAL	2644	kg	X2	=	5288	kg	
CONCRETE							
		61.2m ³	X2	=	122.4m ³		
FORM							
		112.0m ²	X2	=	224.0m ²		

