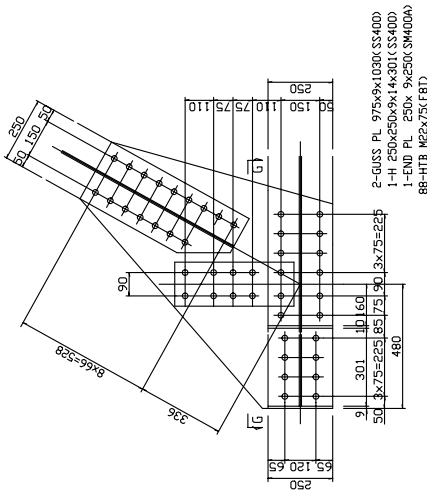
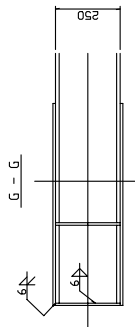


DETAILS OF LOWER CONNECTION

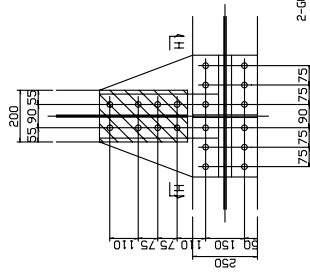
SCALE: 1:10



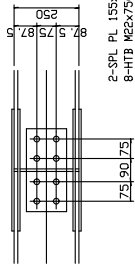
DETAIL G



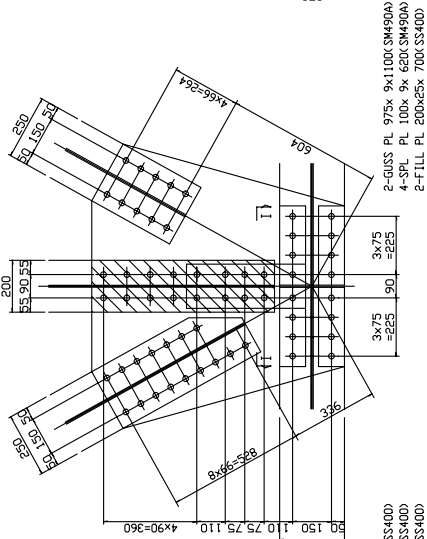
DETAIL H



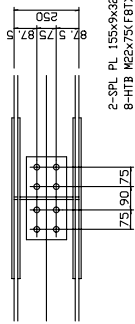
H - H



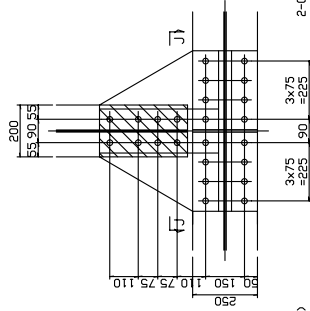
DETAIL I



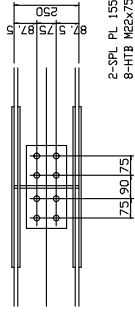
I - I



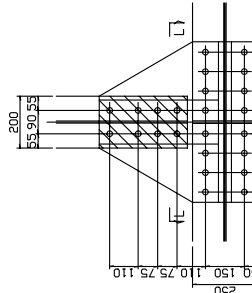
DETAIL J



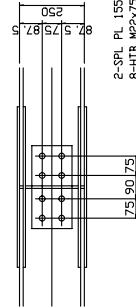
J - J



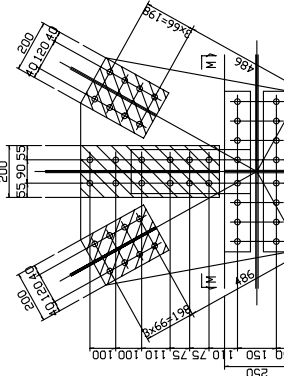
DETAIL L



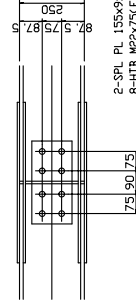
L - L



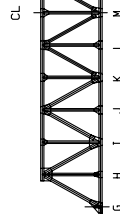
DETAIL M



M - M



KEY ELEVATION



KEY ELEVATION

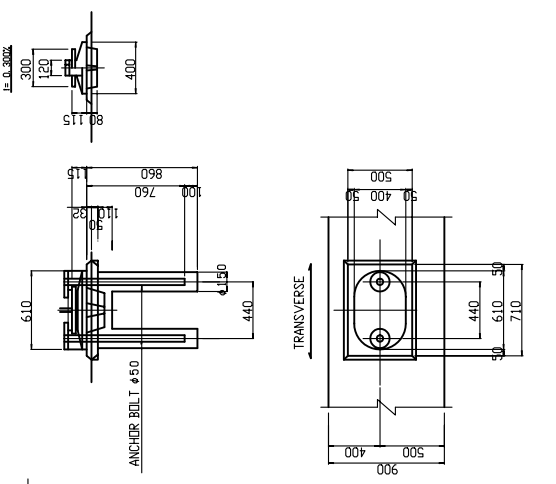
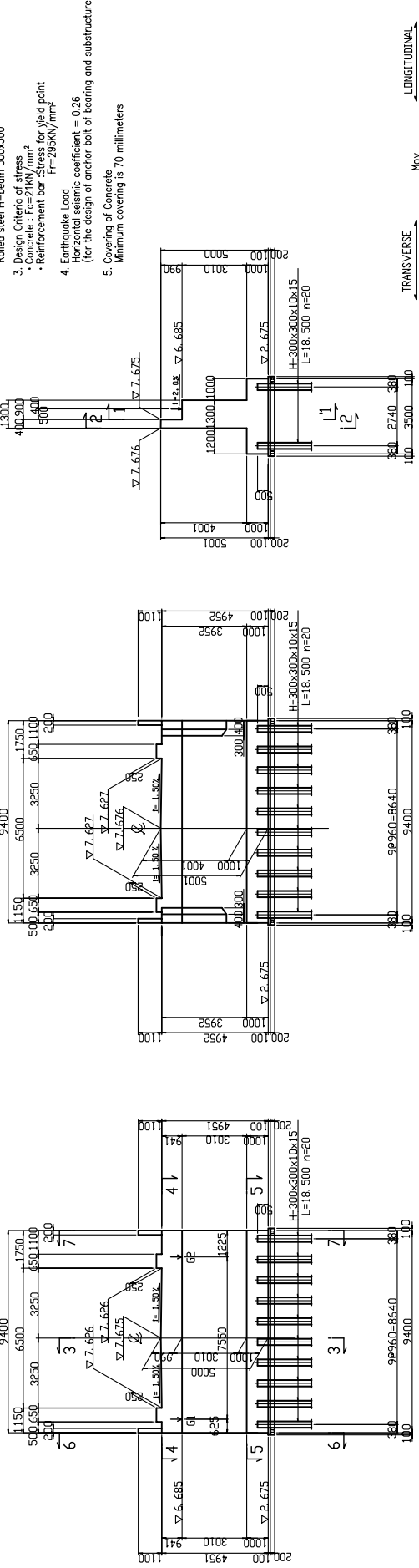
Note
All dimensions are shown in millimeter unless otherwise indicated.

<p>GOVERNMENT OF THE REPUBLIC OF VANUATU PUBLIC WORKS DEPARTMENT</p>	<p>JAPAN INTERNATIONAL COOPERATION AGENCY KATAHIRA & ENGINEERS INTERNATIONAL</p>	<p>PROJECT : BASIC DESIGN STUDY ON THE PROJECT FOR THE REHABILITATION OF BRIDGES ON THE RING ROAD IN THE EFATE ISLAND</p>	<p>THEE : DETAILS OF LOWER CONNECTION (TEOUMA BRIDGE)</p>	<p>DRAWING NO. : 5</p>
				<p>SCALE: 1:10</p>

STRUCTURE DRAWING OF A1-ABUTMENT SCALE 1:100

Design Criteria of Substructures

1. Type of Abutment
Inverted-T wall type abutment
2. Type of Foundations
Rolled steel H-beam 300x300
3. Design Criteria of stress
• Concrete : $f_c = 21 \text{ KN/mm}^2$
• Reinforcement bar : Stress for yield point
 $F_y = 235 \text{ KN/mm}^2$
4. Earthquake Load
Horizontal seismic coefficient = 0.26
(for the design of anchor bolt of bearing and substructure)
5. Covering of Concrete
Minimum covering is 70 millimeters

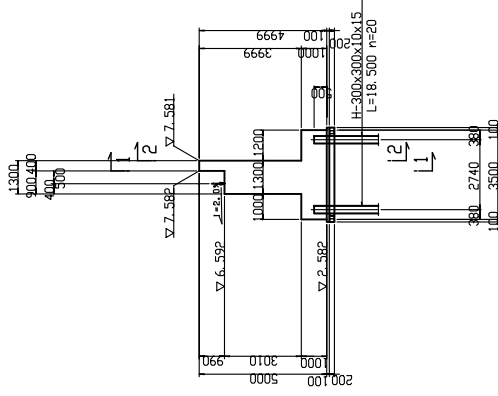
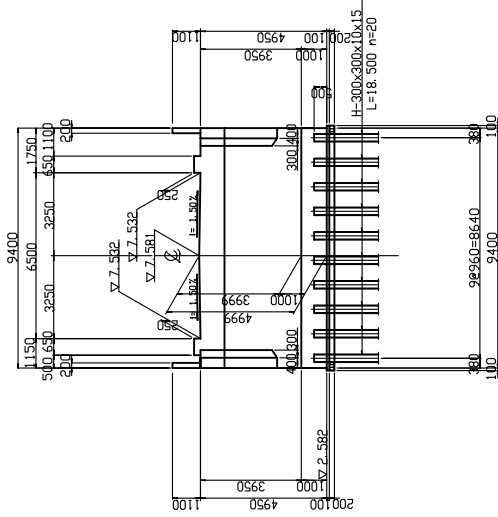
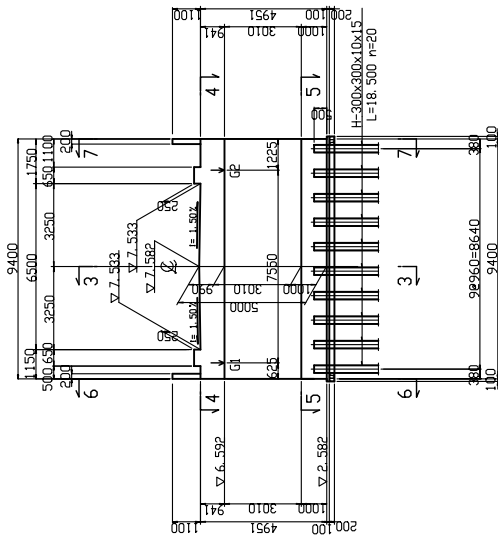


DETAILS OF SUPPORT ANCHOR SCALE 1:20

Note
All dimensions are shown in millimeter
unless otherwise indicated.

<p>GOVERNMENT OF THE REPUBLIC OF VANUATU PUBLIC WORKS DEPARTMENT</p>	<p>JAPAN INTERNATIONAL COOPERATION AGENCY KATAHIRA & ENGINEERS INTERNATIONAL</p>	<p>PROJECT : BASIC DESIGN STUDY ON THE PROJECT FOR THE REHABILITATION OF BRIDGES ON THE RING ROAD IN THE EFATE ISLAND</p>	<p>TITLE : STRUCTURE DRAWING OF A1-ABUTMENT (TEOUMA BRIDGE)</p>	DRAWING No.	10

STRUCTURE DRAWING OF A2-ABUTMENT SCALE 1:100

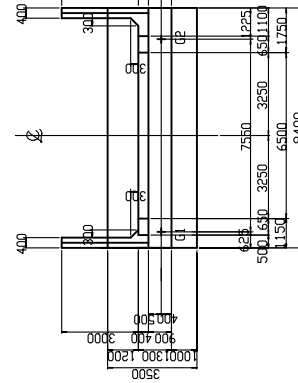


1-1

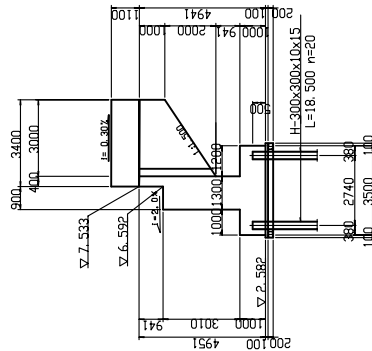
2-2

3-3

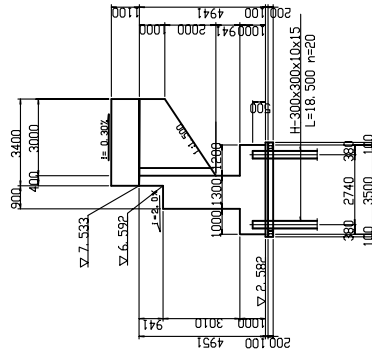
TRANSVERSE
LONGITUDINAL



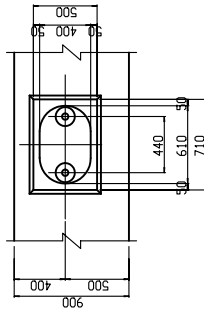
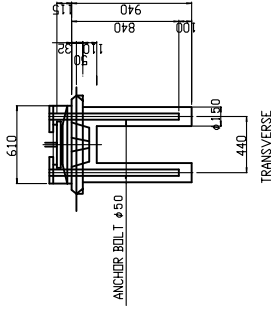
4-4



6-6




7-7

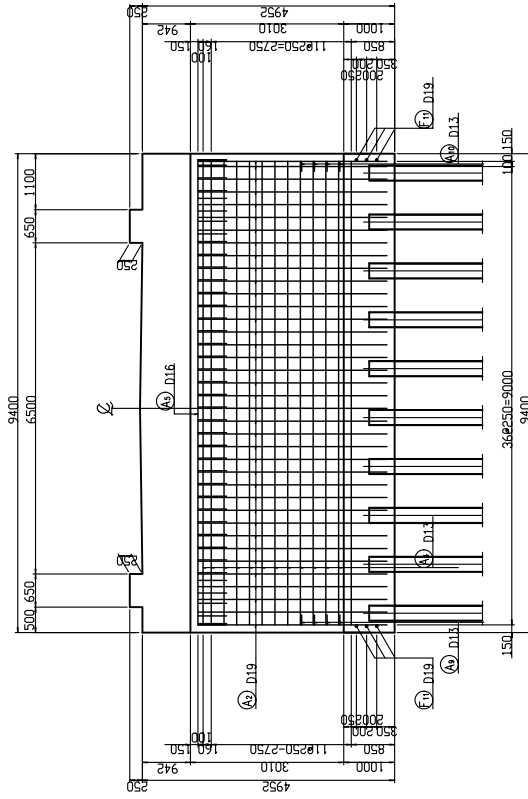


DETAILS OF SUPPORT ANCHOR SCALE 1:20

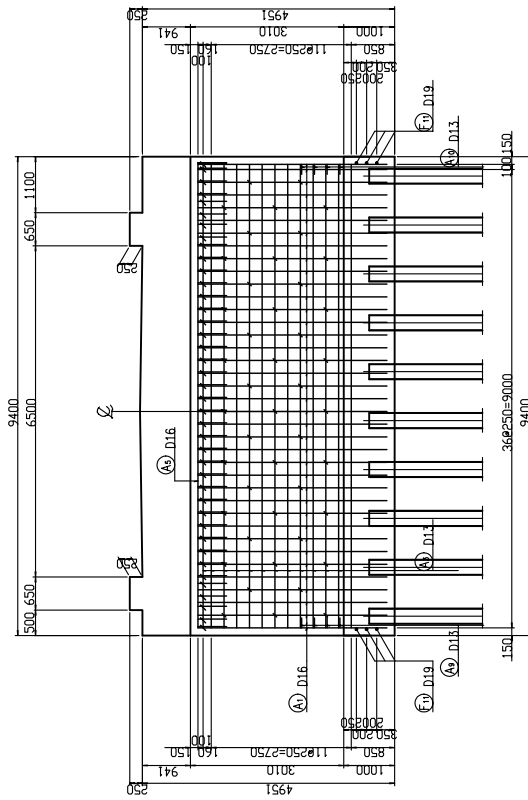
Note
All dimensions are shown in millimeter
unless otherwise indicated.

	GOVERNMENT OF THE REPUBLIC OF VANUATU PUBLIC WORKS DEPARTMENT	JAPAN INTERNATIONAL COOPERATION AGENCY KATAHIRA & ENGINEERS INTERNATIONAL	PROJECT : BASIC DESIGN STUDY ON THE PROJECT FOR THE REHABILITATION OF BRIDGES ON THE RING ROAD IN THE EFATE ISLAND	TITLE : STRUCTURE DRAWING OF A2-ABUTMENT (TEOJUMA BRIDGE)	DRAWING No. : 11
					11

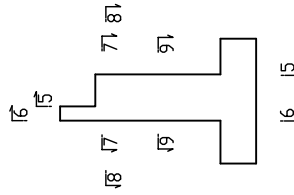
BAR ARRANGEMENT OF ABUTMENT A1,A2 (2) SCALE 1:50



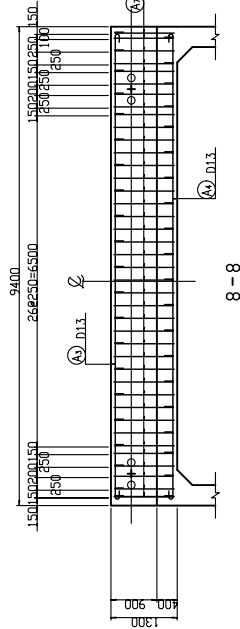
5-5



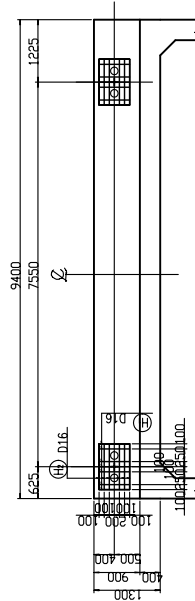
6-6



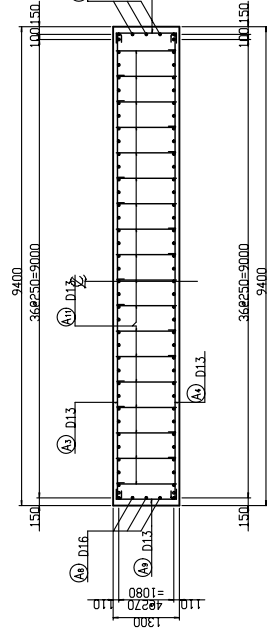
KEY ELEVATION



REINFORCING BAR OF BASE



7-7

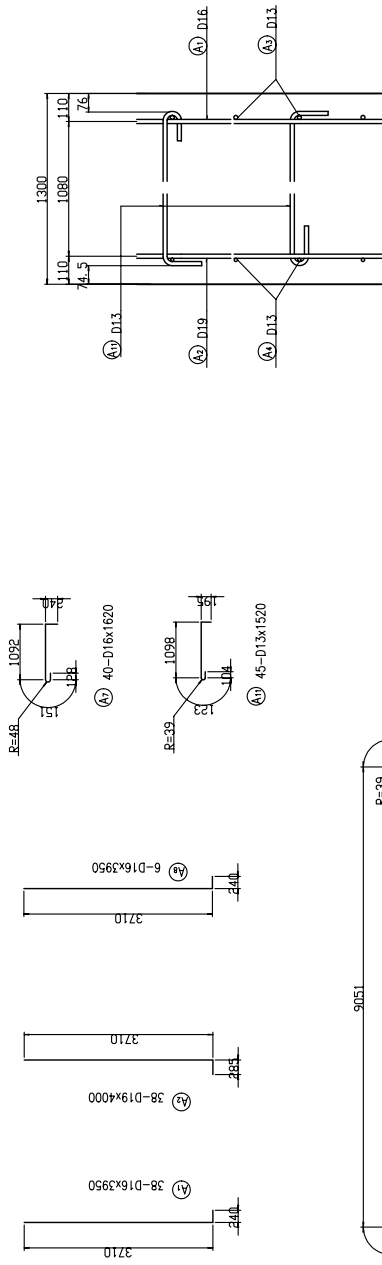


9-9

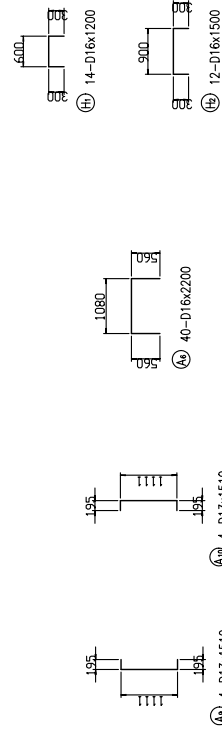
Note
All dimensions are shown in
millimeter unless otherwise
indicated.

	GOVERNMENT OF THE REPUBLIC OF VANUATU PUBLIC WORKS DEPARTMENT	JAPAN INTERNATIONAL COOPERATION AGENCY KATAHIRA & ENGINEERS INTERNATIONAL	PROJECT BASIC DESIGN STUDY ON THE PROJECT FOR THE REHABILITATION OF BRIDGES ON THE RING ROAD IN THE EFATE ISLAND	TITLE : BAR ARRANGEMENT OF ABUTMENT A1,A2 (2) (TEOUMA BRIDGE)	DRAWING No. 13
--	--	--	---	--	----------------


BAR ARRANGEMENT OF ABUTMENT A1,A2 (3) SCALE 1 : 50



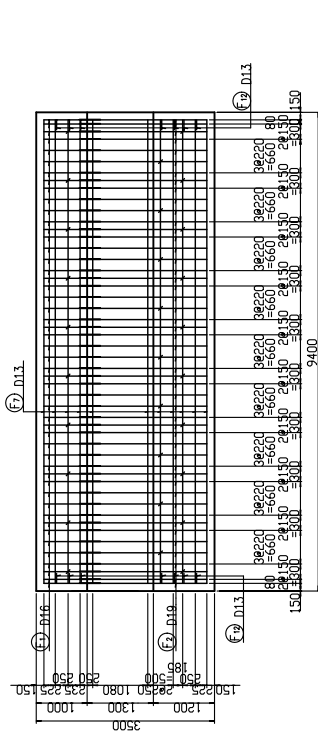
Re-Bar & Con. Cover at Wall



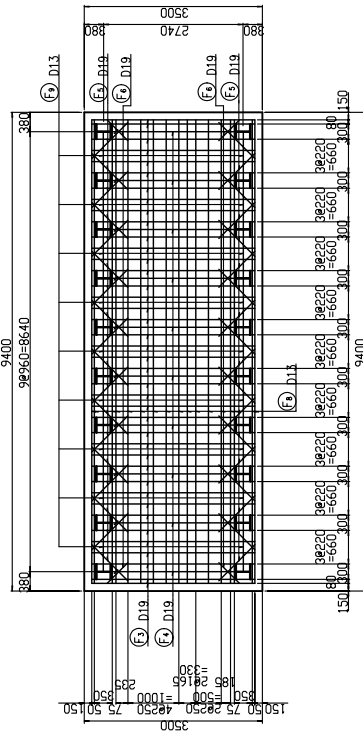
Note
All dimensions are shown in millimeter
unless otherwise indicated.

	GOVERNMENT OF THE REPUBLIC OF VANUATU PUBLIC WORKS DEPARTMENT	JAPAN INTERNATIONAL COOPERATION AGENCY KATAHIRA & ENGINEERS INTERNATIONAL	PROJECT : BASIC DESIGN STUDY ON THE PROJECT FOR THE REHABILITATION OF BRIDGES ON THE RING ROAD IN THE EFATE ISLAND	TITLE : BAR ARRANGEMENT OF ABUTMENT A1,A2 (3) (TEOJUMA BRIDGE)	DRAWING No. 14

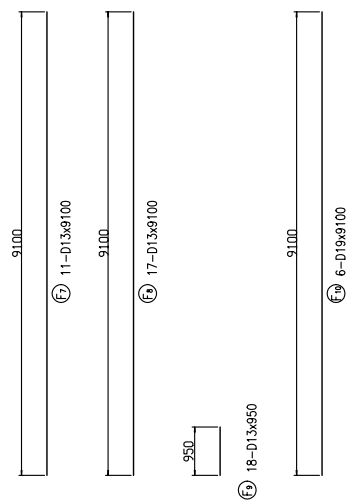
BAR ARRANGEMENT OF ABUTMENT A1,A2 (4) SCALE 1 : 50



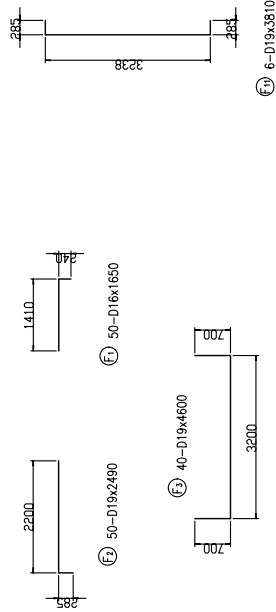
10 - 10



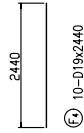
11 - 11



KEY ELEVATION



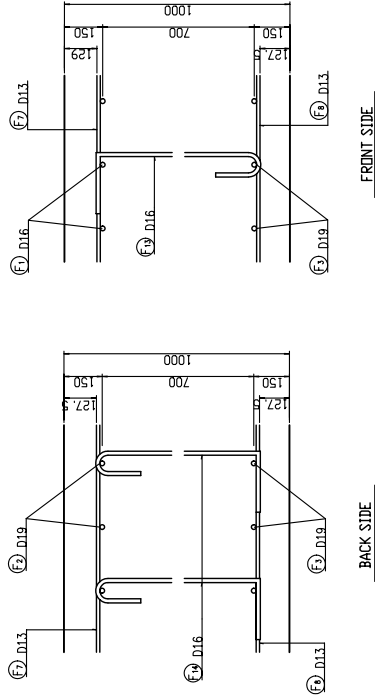
6-D19x3910



36-D19x1000



19-D16x1210



BACK SIDE

FRONT SIDE

DETAIL OF FOOTING

Note
All dimensions are shown in millimeter
unless otherwise indicated.

	GOVERNMENT OF THE REPUBLIC OF VANUATU PUBLIC WORKS DEPARTMENT	JAPAN INTERNATIONAL COOPERATION AGENCY KATAHIRA & ENGINEERS INTERNATIONAL	PROJECT : BASIC DESIGN STUDY ON THE PROJECT FOR THE REHABILITATION OF BRIDGES ON THE RING ROAD IN THE EFATE ISLAND	TITLE : BAR ARRANGEMENT OF ABUTMENT A1,A2 (4) (TEOUMA BRIDGE)	DRAWING No. 15