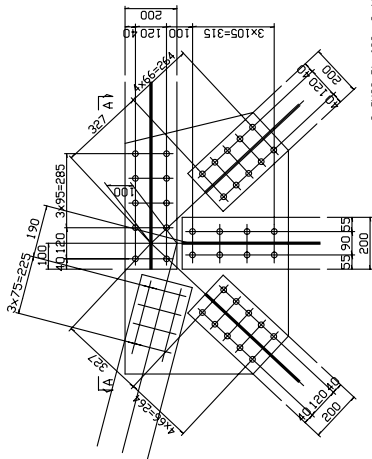
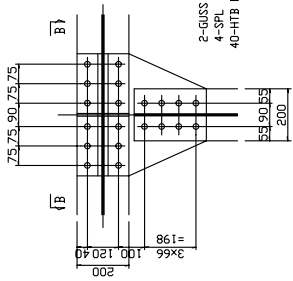
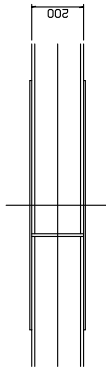


DETAILS OF UPPER&LOWER CONNECTION SCALE 1:10



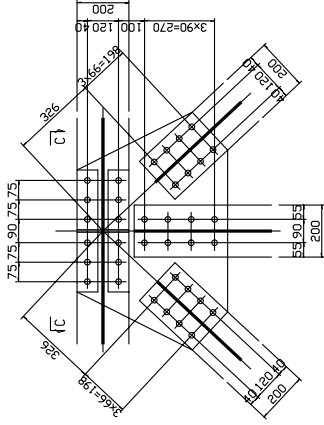
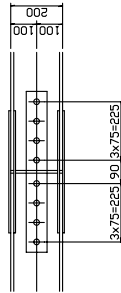
DETAIL A

A - A



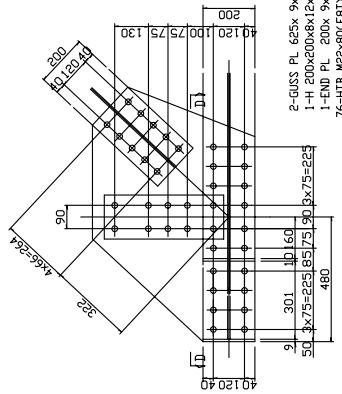
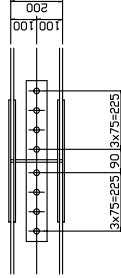
DETAIL B

B - B



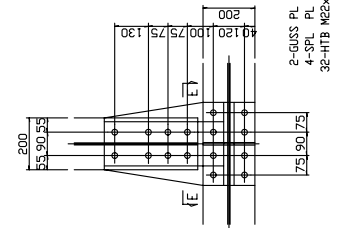
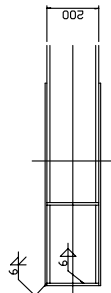
DETAIL C

C - C



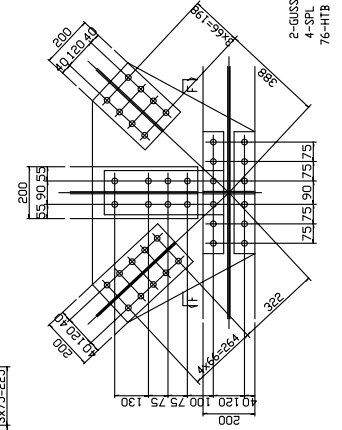
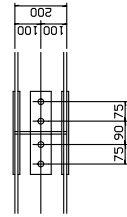
DETAIL D

D - D



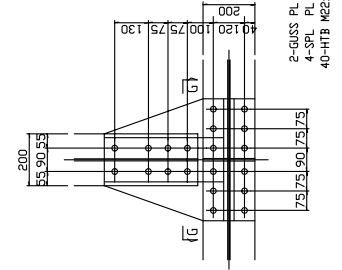
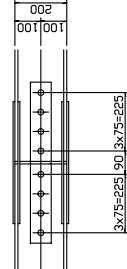
DETAIL E

E - E



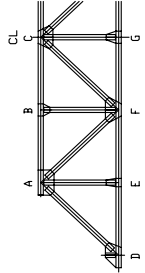
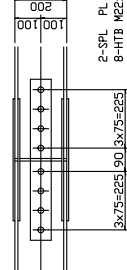
DETAIL F

F - F



DETAIL G

G - G

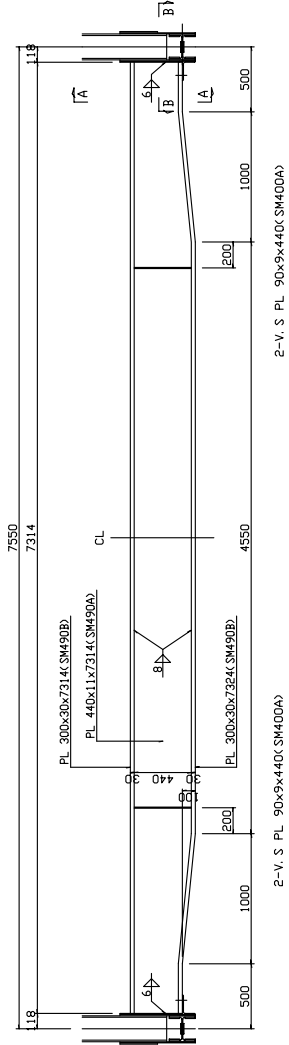


KEY ELEVATION

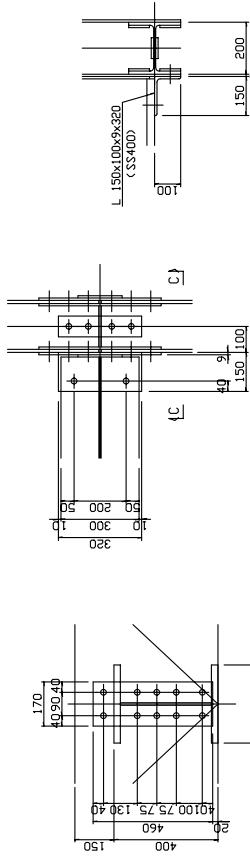
Note
All dimensions are shown in millimeter
unless otherwise indicated.

	JAPAN INTERNATIONAL COOPERATION AGENCY KATHIRA & ENGINEERS INTERNATIONAL	PROJECT: BASIC DESIGN STUDY ON THE PROJECT FOR THE REHABILITATION OF BRIDGES ON THE RING ROAD IN THE EFATE ISLAND	TITLE: DETAILS OF UPPER&LOWER CONNECTION (RENTAPAO BRIDGE)	DRAWING NO: 25
	GOVERNMENT OF THE REPUBLIC OF VANUATU PUBLIC WORKS DEPARTMENT			

CROSS BEAM, STRINGER AND LOWER LATERAL



CROSS BEAM SCALE 1:10

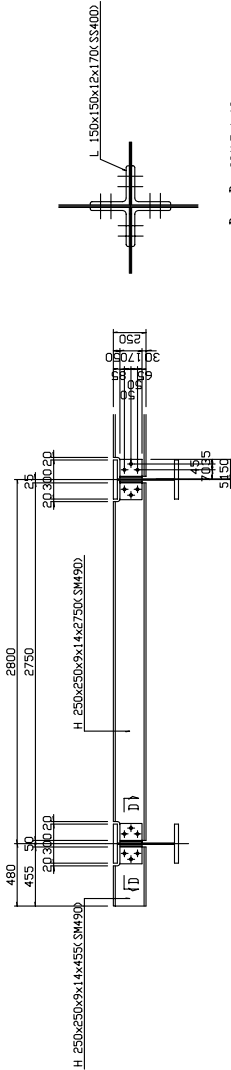


1 - A - A SCALE 1:10

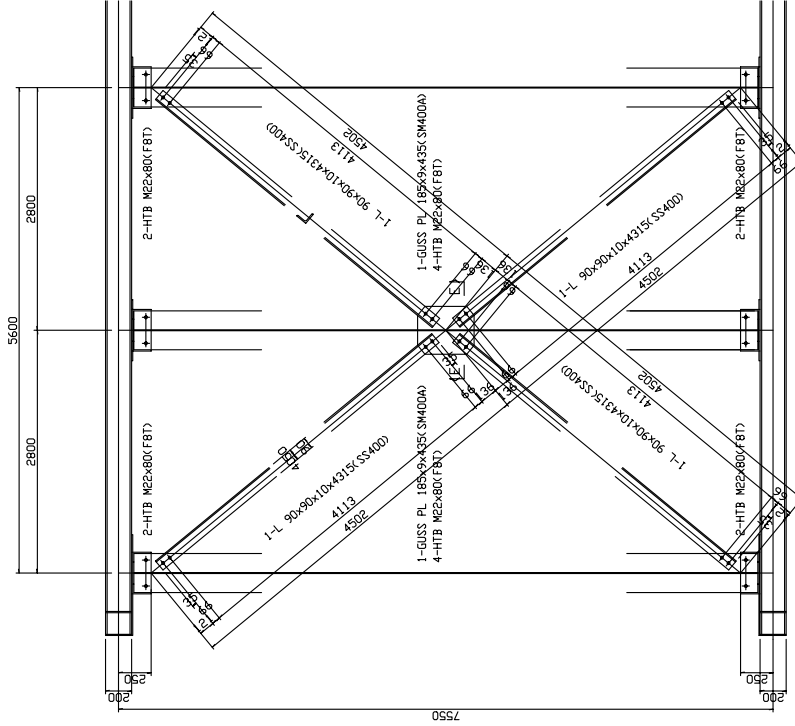
1 - B - B SCALE 1:10

C - C SCALE 1:10

D - D SCALE 1:10



LOWER LATERAL SCALE 1:10



1 - A - A SCALE 1:10

1 - B - B SCALE 1:10

C - C SCALE 1:10

D - D SCALE 1:10

Note
All dimensions are shown in millimeter
unless otherwise indicated.



GOVERNMENT OF THE REPUBLIC OF VANUATU
PUBLIC WORKS DEPARTMENT

JAPAN INTERNATIONAL COOPERATION AGENCY
KATAHIRA & ENGINEERS INTERNATIONAL

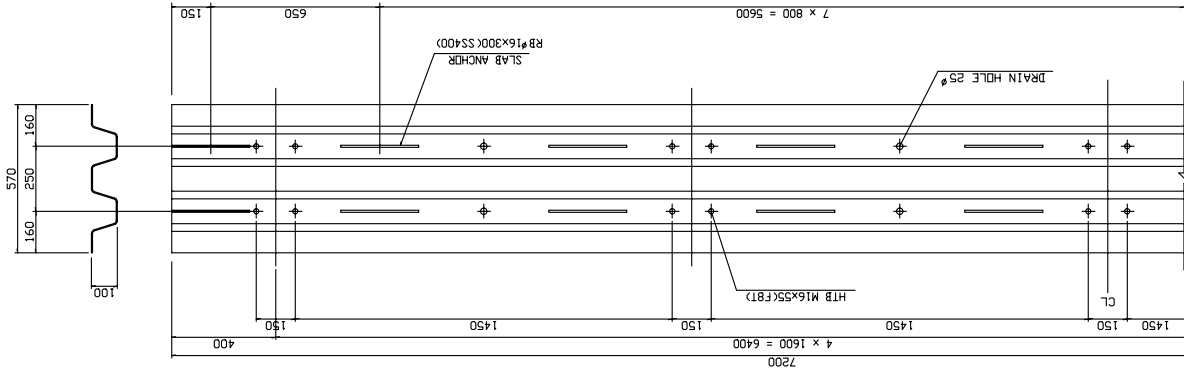
PROJECT : BASIC DESIGN STUDY ON THE PROJECT FOR
THE REHABILITATION OF BRIDGES
ON THE RING ROAD IN THE EFATE ISLAND

MEET : CROSS BEAM , STRINGER
AND LOWER LATERAL
(RENTAPAO BRIDGE)

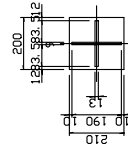
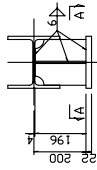
DRAWING NO. 26

K2

SLAB DECK AND BEARING

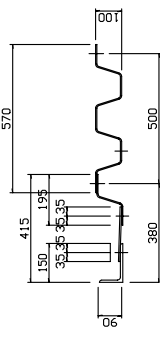


- 2-DECK PL 195x4. 0x7200 SS400
- 34-DECK PL 570x4. 0x7200 SS400
- 700-RB 816x300 SS400
- 2-L 150x90x9x7200 SS400
- 2-PL 210x 6x7200 SS400
- 720-HTB M16x55(F81)

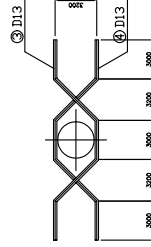


Fix
A - A
Max.

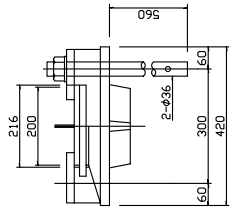
- 1-KEB PL 170x 9x196 (SM490A)
 - 2-V-S PL 84x13x196 (SM490A)
 - 1-BASE PL 190x26x200 (SM400A)
- 1-KEB PL 190x 9x196 (SM490A)
 - 2-V-S PL 84x13x196 (SM490A)
 - 1-BASE PL 210x26x200 (SM400A)



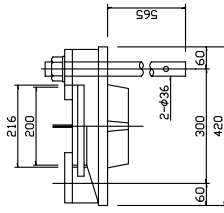
END PL SCALE 1:10



BOTTOM OF GUARDRAIL PIPE
SCALE 1:10

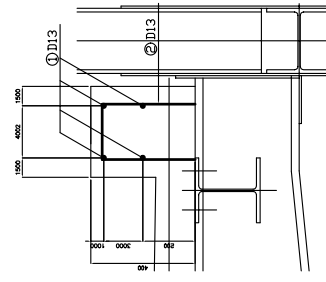


50ton Fix

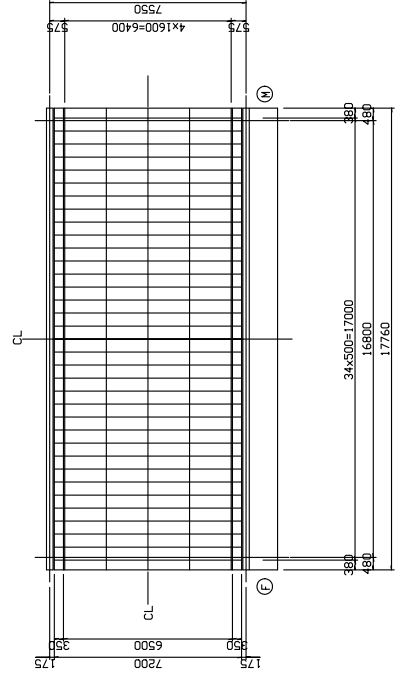


50ton Mov.

SHOE SCALE 1:10



CURB SCALE 1:10



KEY PLAN

Note
All dimensions are shown in millimeter unless otherwise indicated.

MATERIAL LIST OF SUPERSTRUCTURE

(RENTAPAO BRIDGE)

MATERIAL	SIZE	U-CHORD		L-CHORD		DIAGONAL		VERTICAL		C-BEAM STRINGER		BRACKET		LATERAL		BEARING STEEL-SIDEWALK/RAILLING		TOTAL
		UC	LC	LC	JG	VT	CB	ST	BR	LL	SH	SS	SW	HR				
PL SM450B	30								7,239									7,239
SM450A	13		12	1,154					1,945									1,166
	11							386										1,945
	10								77									386
	9	662	444						2,082									1,183
SM400A	22	662	456	1,540														4,680
	12		28															28
	9		12						78									47
	40		40						78	30	22							142
SS400	9		392							30	22							217
	6																	392
	3, 2																	10
	3, 2																	152
	3, 2																	4
	3, 2																	4
	3, 2																	4
PLATE		662	888	1,540					9,339	30	22							14
SM400	400x200x 8									233								61
SM450	250x250x 9								6,250									12,684
	200x200x 8	1,134		556														233
SS400	200x200x 8		1,206	692	1,378													6,250
	150x150x 7																	1,656
	150x150x 12	1,134	1,762	692	1,378				6,250	233								13,105
L SS400	150x100x 9																	650
	150x100x 9								77									77
	90x90x 10																	236
	90x90x 10																	77
	125x 75x3.2								77	650								460
ST STR400	100x100x3.2																	236
	75x 45x3.2																	460
	16φ																	162
DK SS400	570 x 4																	169
	195 x 4																	125
	3, 2																	181
CP SS400	50ton-F																	475
SC SC450	50ton-M																	475
	M 10																	475
BN SS400	M 10																	475
HT F8T	M 22	382	512						16	245								6
	M 16																	6
TOTAL		2,178	3,162	2,532	1,378	9,432	7,145	263	500	289	7,315	2,156	549	36,999				

MATERIAL	SIZE	U-CHORD		L-CHORD		C-BEAM STRINGER		STEEL-SIDEWALK/RAILLING		TOTAL
		UC	LC	LC	JG	CB	ST	LL	SS	
HT F8T	M 22x 80	656	880	32						2,016
	M 16x 55			720	84	52				856
	SUB TOTAL	656	880	720	84	52				2,872
BN SS400	M 10x 30									130

Reinforcement

No.	Diameter	Length (mm)	Quantity	Weight(kg)		Remark
				kg/m	Total	
①	D13	7000	16	0.995	7,000	
②	D13	4440	8	0.995	4,400	
③	D13	930	136	0.995	0,900	
④	D13	910	16	0.995	0,900	
⑤	D13	910	16	0.995	0,900	
TOTAL					297	kg

Deck Slab

Item	Unit	Quantity	Notes
Sprayed Seal	m ²	115.44	t=17mm
Concrete	Slab	16.17	
	Curb	3.11	
Total	m ³	19.28	
Form Panel	Slab	5.33	
	Curb	17.76	
Total	m ²	23.09	
Steel Reinforcement Mesh	m ²	127.87	64-150x150



GOVERNMENT OF THE REPUBLIC OF VANUATU
PUBLIC WORKS DEPARTMENT

JAPAN INTERNATIONAL COOPERATION AGENCY
KATAHIRA & ENGINEERS INTERNATIONAL

PROJECT
BASIC DESIGN STUDY ON THE PROJECT FOR
THE REHABILITATION OF BRIDGES
ON THE RING ROAD IN THE EFATE ISLAND

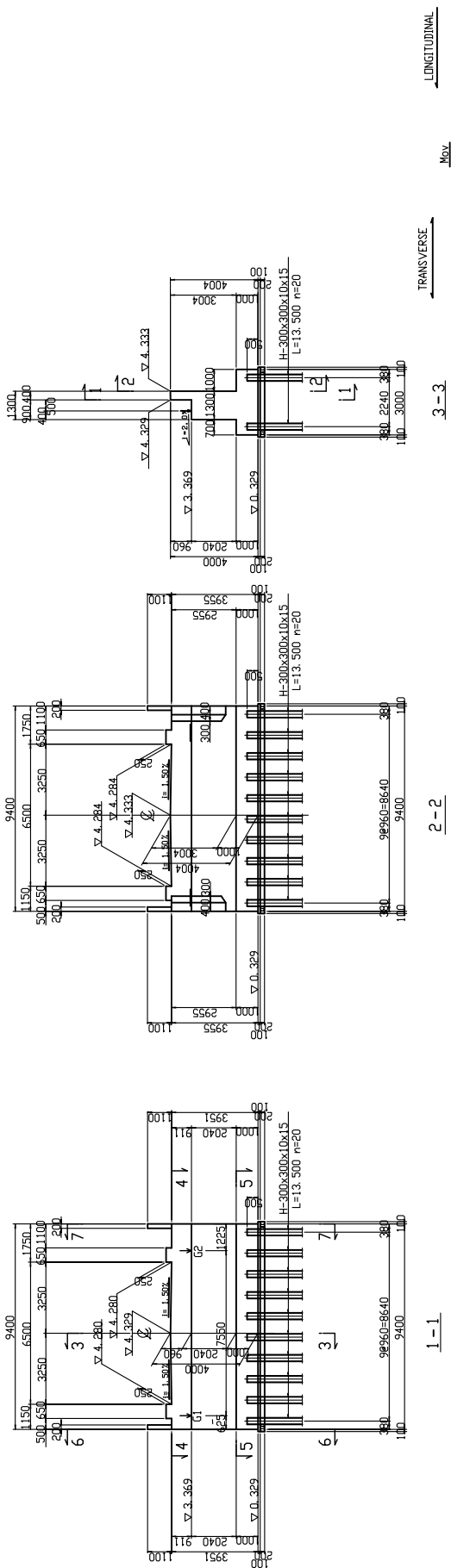
ITEM:
MATERIAL LIST OF
SUPERSTRUCTURE
(RENTAPAO BRIDGE)

DRAWING No.

29

No.

STRUCTURE DRAWING OF A2-ABUTMENT SCALE 1:100



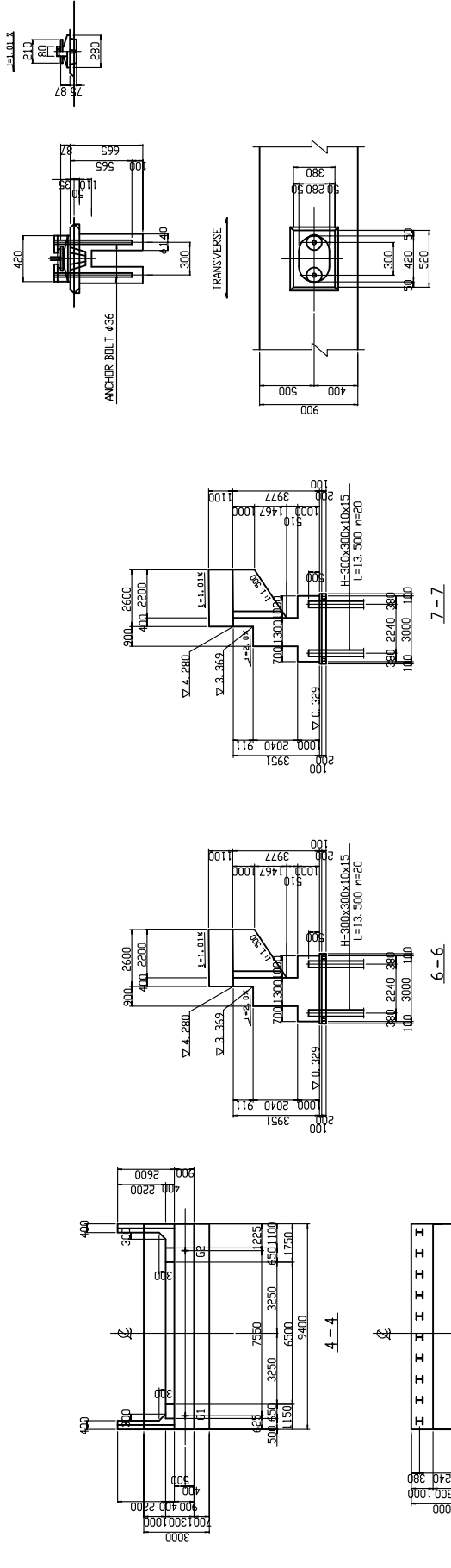
LONGITUDINAL

TRANSVERSE

3-3

2-2

1-1



DETAILS OF SUPPORT ANCHOR SCALE 1:20

All dimensions are shown in millimeter unless otherwise indicated.

	<p>PROJECT BASIC DESIGN STUDY ON THE PROJECT FOR THE REHABILITATION OF BRIDGES ON THE RING ROAD IN THE EFATE ISLAND</p>	<p>PRODUCT JAPAN INTERNATIONAL COOPERATION AGENCY KATAHIRA & ENGINEERS INTERNATIONAL</p>	<p>TITLE STRUCTURE DRAWING OF A2-ABUTMENT (RENTAPAO BRIDGE)</p>	<p>DRAWING NO. 31</p>
--	---	--	---	-----------------------

