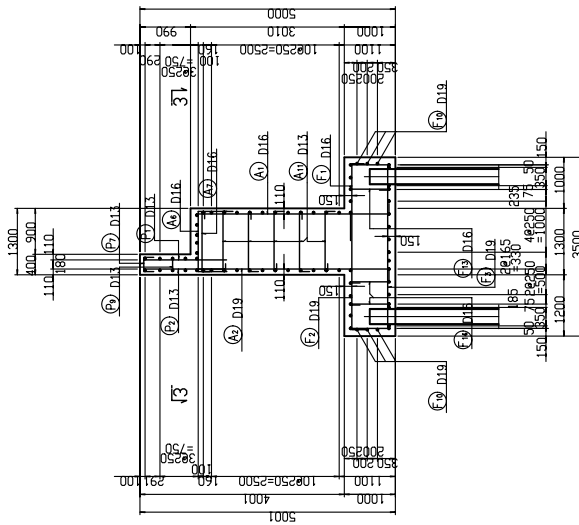
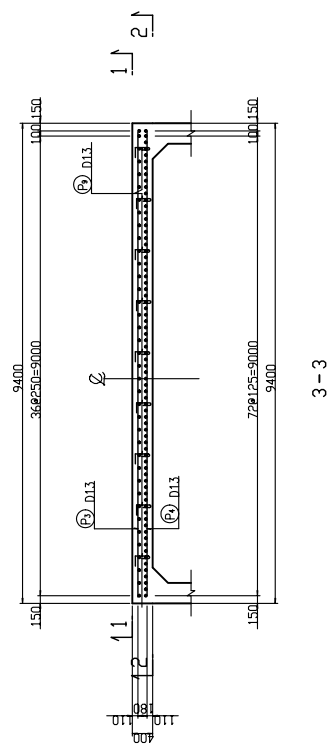
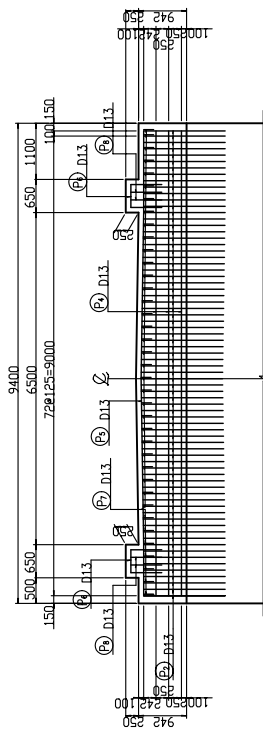
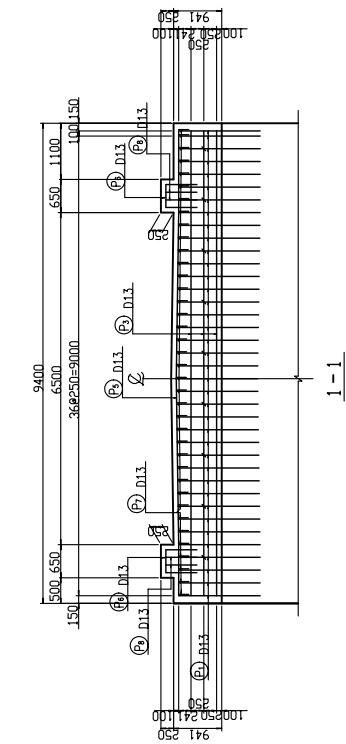
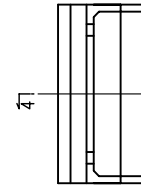
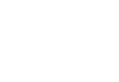
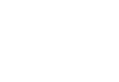
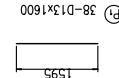
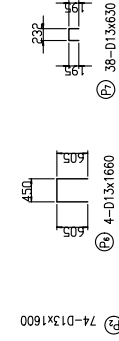
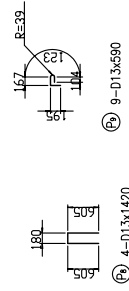
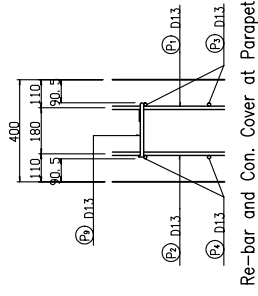
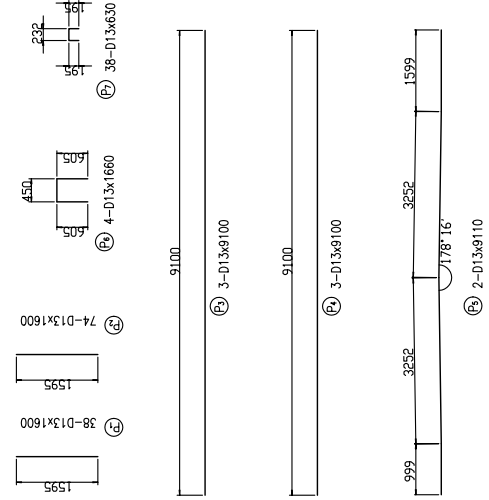


BAR ARRANGEMENT OF ABUTMENT A1,A2 (1) SCALE 1 : 50



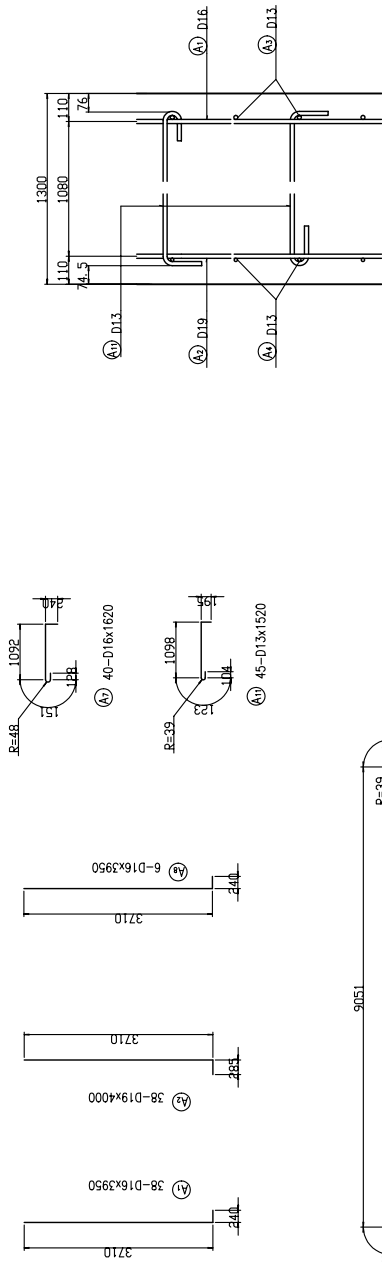
4-4



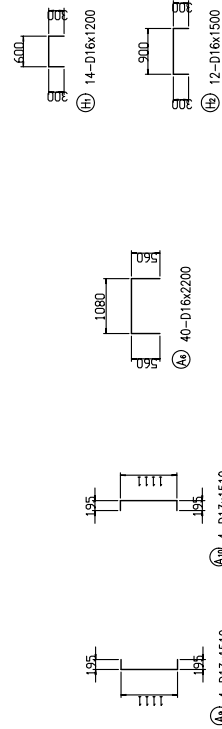
Note
All dimensions are shown in millimeter
unless otherwise indicated.

	GOVERNMENT OF THE REPUBLIC OF VANUATU PUBLIC WORKS DEPARTMENT	JAPAN INTERNATIONAL COOPERATION AGENCY KATAHIRA & ENGINEERS INTERNATIONAL	PROJECT : BASIC DESIGN STUDY ON THE PROJECT FOR THE REHABILITATION OF BRIDGES ON THE RING ROAD IN THE EFATE ISLAND	TITLE : BAR ARRANGEMENT OF ABUTMENT A1,A2 (1) (TEOUMA BRIDGE)	DRAWING No. 12


BAR ARRANGEMENT OF ABUTMENT A1,A2 (3) SCALE 1 : 50



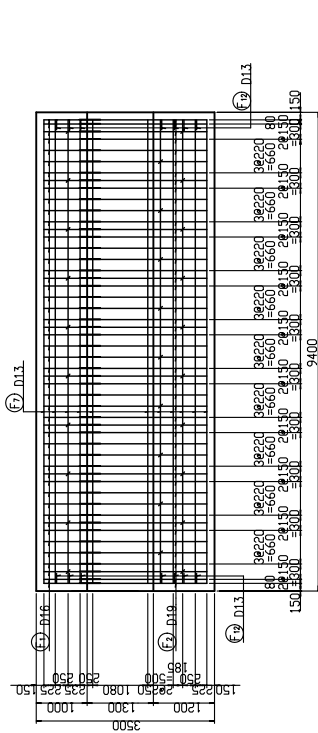
Re-Bar & Con. Cover at Wall



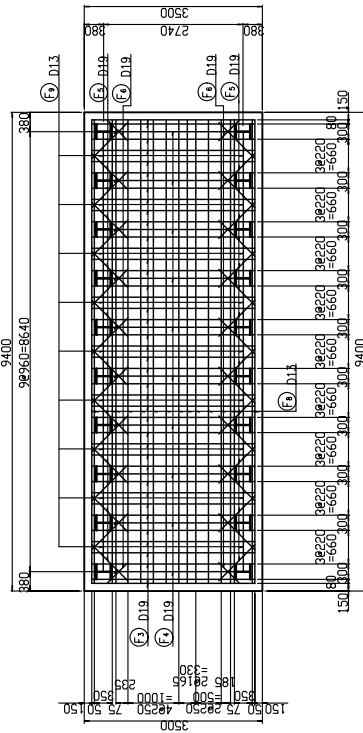
Note
All dimensions are shown in millimeter
unless otherwise indicated.

	GOVERNMENT OF THE REPUBLIC OF VANUATU PUBLIC WORKS DEPARTMENT	JAPAN INTERNATIONAL COOPERATION AGENCY KATAHIRA & ENGINEERS INTERNATIONAL	PROJECT : BASIC DESIGN STUDY ON THE PROJECT FOR THE REHABILITATION OF BRIDGES ON THE RING ROAD IN THE EFATE ISLAND	TITLE : BAR ARRANGEMENT OF ABUTMENT A1,A2 (3) (TEOJUMA BRIDGE)	DRAWING No. : 14

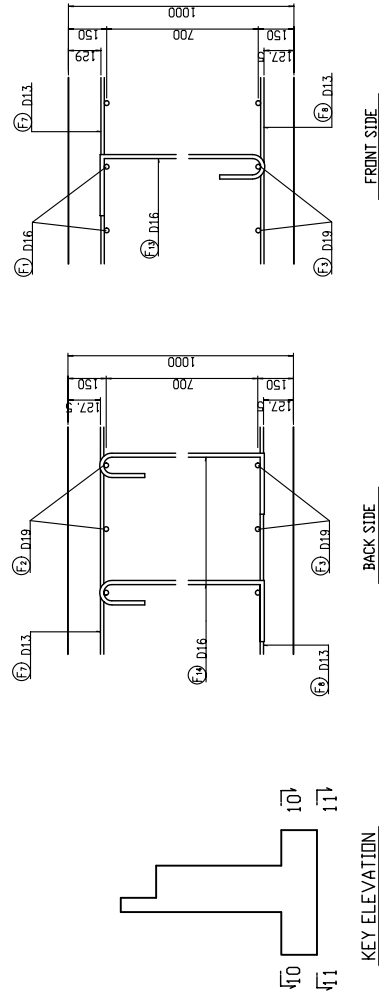
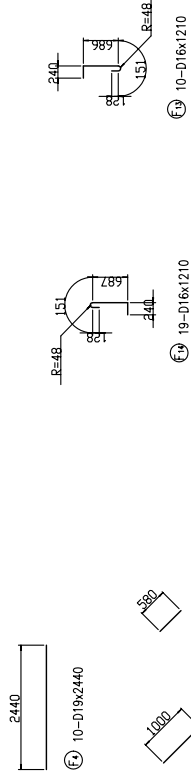
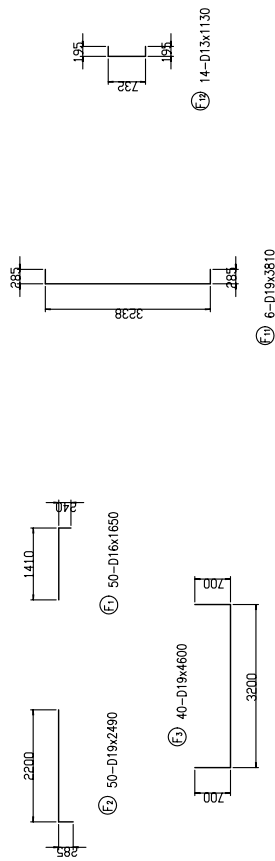
BAR ARRANGEMENT OF ABUTMENT A1,A2 (4) SCALE 1 : 50



10 - 10



11 - 11

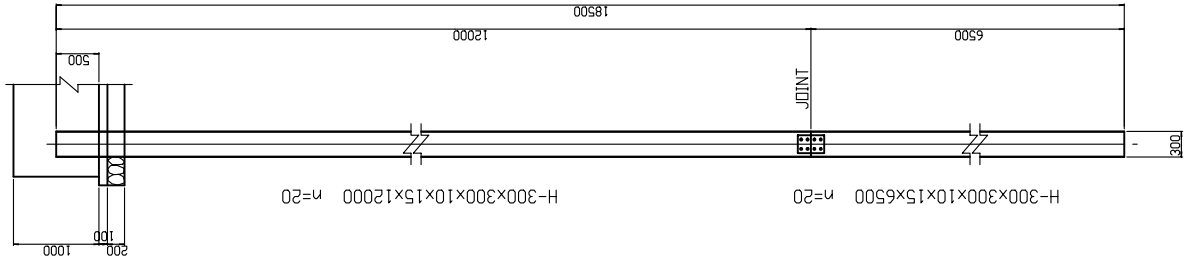


DETAIL OF FOOTING

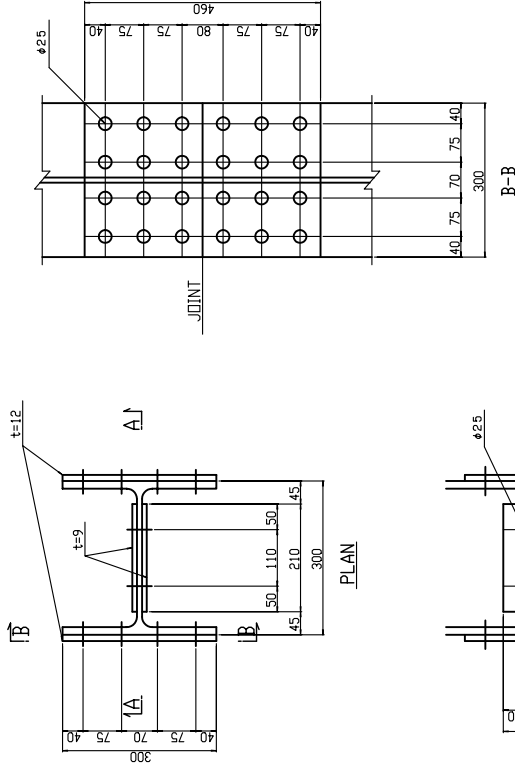
Note
All dimensions are shown in millimeter
unless otherwise indicated.

	GOVERNMENT OF THE REPUBLIC OF VANUATU PUBLIC WORKS DEPARTMENT	JAPAN INTERNATIONAL COOPERATION AGENCY KATAHIRA & ENGINEERS INTERNATIONAL	PROJECT : BASIC DESIGN STUDY ON THE PROJECT FOR THE REHABILITATION OF BRIDGES ON THE RING ROAD IN THE EFATE ISLAND	TITLE : BAR ARRANGEMENT OF ABUTMENT A1,A2 (4) (TEOUMA BRIDGE)	DRAWING No. 15

DETAIL OF FOUNDATION PILE



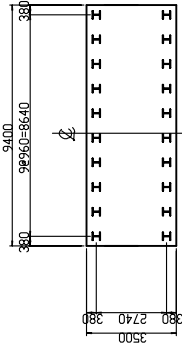
SIDE ELEVATION SCALE 1:30



- 2-PL 300x12x460
- 2-PL 210x 9x310
- 56-BN M22x55

DETAIL OF JOINT SCALE 1:5

KEY PLAN SCALE 1:100



MATERIAL LIST

Unit : kg

ITEM	SECTION	LENGTH	NO.	UNIT WT.	WT/DNE	REMARKS
PER ONE PILE						
H	H-300x300x10x15	12000	1	93.00	1116	SS400
H	H-300x300x10x15	6500	1	93.00	605	SS400
TOTAL						1721
PL	300x12	460	2		13.0	26 SS400
"	210x 9	310	2		4.6	9 SS400
BN	M22x55		56		0.34	19 SS400
TOTAL						54
PER ONE ABUTMENT(20 PILES)						
H	H-300x300x10x15	12000	20	93.00	1116	22320 SS400
H	H-300x300x10x15	6500	20	93.00	605	12090 SS400
TOTAL						34410
PL	300x12	460	40		13.0	520 SS400
"	210x 9	310	40		4.6	184 SS400
BN	M22x55		1120		0.34	381 SS400
TOTAL						1085

Note
All dimensions are shown in millimeter
unless otherwise indicated.

	GOVERNMENT OF THE REPUBLIC OF VANUATU PUBLIC WORKS DEPARTMENT	JAPAN INTERNATIONAL COOPERATION AGENCY KATAHIRA & ENGINEERS INTERNATIONAL	PROJECT : BASIC DESIGN STUDY ON THE PROJECT FOR THE REHABILITATION OF BRIDGES ON THE RING ROAD IN THE EFATE ISLAND	DRAWING No : 18
TITLE : DETAIL OF FOUNDATION PILE (TEOUMA BRIDGE)				