

7.5.3.3.3.2 Modification on the sheet of "Total Mfg

(Production)" in the "Indexmsp_Total_Mfg(***).xls"

Add or remove the relevant records (rows) of the Major Sector on the sheet of "Total Mfg (Production)" in the "Indexmsp_Total_Mfg(***).xls"

*The lists of Major Sectors do not allow having the Blank Rows.

And, revise all the weight for each Major Sector on the Column "C" in this sheet.

*The Total weight of all major sector should be 1.0000.

Microsoft Excel - Indexmsp_Total_Mfg(Non-MISSI-20-14) [9] x [14] x

ファイル(F) 編集(E) 表示(V) 挿入(I) 書式(O) ツール(T) データ(D) ウィンドウ(W) ヘルプ(H)

Arial - 10 - B I U 標準 国 関 % , 38.00 文字 色 - 色 - A -

028 日付(C28:D5)=0, EC28:D5)

Group (M.S.)	Name of Mfg. (Non-MISSI-20)	C	D	E	F	G	H	I	J	K	L	M	N	O	P	Q	R
		JAN	FEB	MAR	APR	MAY	JUN	JUL	AUG	SEP	OCT	NOV	DEC				
1																	
2	A	I. MANUFACTURE OF FOOD PRODUCTS															
3	B	II. BEVERAGES															
4	C	III. TOBACCO															
5	D	IV. TEXTILES	04.08	73.36	78.77	78.83	78.81	83.36	84.01	89.83	89.10						
6	E	V. FOOTWEAR & WEARING APPAREL	20.72	42.28	44.73	27.41	46.04	42.50	40.53	36.00	46.18						
7	F	VI. WOOD PRODUCTS	02.82	72.82	13.85	70.27	77.53	82.58	82.58	82.57	79.81						
8	G	VII. FURNITURE & FIXTURES	00.07	08.32	07.10	04.00	03.36	00.80	02.20	02.85	05.02						
9	H	VIII. PAPER & PAPER PRODUCTS															
10	I	IX. PUBLISHING & PRINTING	102.81	143.58	148.54	104.07	78.40	107.27	100.04	100.41	108.74						
11	J	X. LEATHER PRODUCTS	01.75	17.17	14.39	28.28	45.70	43.21	79.88	82.33	87.07						
12	K	XI. RUBBER PRODUCTS	07.00	06.97	03.81	06.00	08.00	04.00	04.00	04.00	04.00						
13	L	XII. CHEMICALS PRODUCTS															
14	M	XIII. PETROLEUM PRODUCTS															
15	N	XIV. NON-METALLIC MINERAL PRODUCTS															
16	O	XV. BASIC METALS															
17	P	XVI. FABRICATED METAL PRODUCTS															
18	Q	XVII. MACHINERY EXCLUDING ELECTRICAL	388.12	392.07	416.24	388.84	371.00	344.04	337.80	286.75	300.12						
19	R	XVIII. ELECTRICAL MACHINERY															
20	S	XIX. TRANSPORT EQUIPMENT															
21	T	XX. MISCELLANEOUS MANUFACTURE	00.00	00.00	00.00	00.00	00.00	00.00	00.00	00.00	00.00						
22																	
23																	
Group (M.S.)	Name of Mfg. (Non-MISSI-20)	CEPS Production Weight	JAN	FEB	MAR	APR	MAY	JUN	JUL	AUG	SEP	OCT	NOV	DEC			
24																	
25	A	I. MANUFACTURE OF FOOD PRODUCTS	0.1000														
26	B	II. BEVERAGES	0.0000														
27	C	III. TOBACCO	0.0001														
28	D	IV. TEXTILES	0.0318	0.2000	0.33	0.28	0.21	0.24	0.05	0.07	0.08	0.08					
29	E	V. FOOTWEAR & WEARING APPAREL	0.0481	0.1100	0.10	0.07	0.10	0.09	0.00	0.01	0.01	0.01					
30	F	VI. WOOD PRODUCTS	0.0109	0.05	0.03	0.02	0.03	0.03	0.00	0.00	0.01	0.01					
31	G	VII. FURNITURE & FIXTURES	0.0007	0.04	0.03	0.02	0.01	0.01	0.00	0.00	0.00	0.00					
32	H	VIII. PAPER & PAPER PRODUCTS	0.0006														
33	I	IX. PUBLISHING & PRINTING	0.0191	0.20	0.08	0.08	0.08	0.20	0.20	0.20	0.22	0.21					
34	J	X. LEATHER PRODUCTS	0.0014	0.00	0.02	0.02	0.04	0.02	0.08	0.11	0.12	0.10					
35	K	XI. RUBBER PRODUCTS	0.0071	0.00	0.03	0.03	0.04	0.04	0.01	0.01	0.01	0.01					
36	L	XII. CHEMICALS PRODUCTS	0.1212														
37	M	XIII. PETROLEUM PRODUCTS	0.1348														
38	N	XIV. NON-METALLIC MINERAL PRODUCTS	0.0002														
39	O	XV. BASIC METALS	0.0000														
40	P	XVI. FABRICATED METAL PRODUCTS	0.0000														
41	Q	XVII. MACHINERY EXCLUDING ELECTRICAL	0.0000														
42	R	XVIII. ELECTRICAL MACHINERY	0.0000														
43	S	XIX. TRANSPORT EQUIPMENT	0.0000														
44	T	XX. MISCELLANEOUS MANUFACTURE	0.0000														

コマンド

スタート | Manual/Content | Indexmsp | Microsoft E. | 1658

7.5.3.3.3 Modification on the sheet of "Total Mfg (Sales)"
in the "Indexmsp_Total_Mfg(***) .xls"

Add or remove the relevant records (rows) of the Major Sector on the sheet of "Total Mfg (Sales)" in the "Indexmsp_Total_Mfg(***) .xls"

*The lists of Major Sectors do not allow having the Blank Rows.

And, revise all the figures on the Column of "Sales Volume as of Base Period" (column "P").

* Sum-up Total of the "GRAND TOTAL" of the VALUE SHIP" on the sheet "WK-B" in the Monthly Result Files of Sector Indices (ex. "msp_index1510102.xls") by each Major Sector would be the applied to as the figures for "Sales Volume as of Base Period".

Then, revise the all the weight for each Major Sector on the Column "C" in this sheet.

Group (M.S.)	Name of Mfg. (New MISSI-20)	JAN	FEB	MAR	APR	MAY	JUN	JUL	AUG	SEP	OCT	NOV	DEC	Sales Volume as of Base Period
1	A I. MANUFACTURE OF FOOD PRODUCTS													2,677,018
2	B II. BEVERAGES													1,835,506
3	C III. TOBACCO													503,478
4	D IV. TEXTILES													
5	E V. FOOTWEAR & WEARING APPAREL													
6	F VI. WOOD PRODUCTS													
7	G VII. FURNITURE & FIXTURES													
8	H VIII. PAPER & PAPER PRODUCTS													699,505
9	I IX. PUBLISHING & PRINTING													
10	J X. LEATHER PRODUCTS													
11	K XI. RUBBER PRODUCTS													
12	L XII. CHEMICALS PRODUCTS													2,843,471
13	M XIII. PETROLEUM PRODUCTS													699,505
14	N XIV. NON-METALLIC MINERAL PRODUCTS													946,616
15	O XV. BASIC METALS													286,361
16	P XVI. FABRICATED METAL PRODUCTS													57,663,339
17	Q XVII. MACHINERY EXCLUDING ELECTRICAL													
18	R XVIII. ELECTRICAL MACHINERY													2,850,302
19	S XIX. TRANSPORT EQUIPMENT													2,459,654
20	T XX. MISCELLANEOUS MANUFACTURE													

Group (M.S.)	Name of Mfg. (New MISSI-20)	MSP2002 Sales Value Weight	JAN	FEB	MAR	APR	MAY	JUN	JUL	AUG	SEP	OCT	NOV	DEC	Sales Volume as of Base Period
24	A I. MANUFACTURE OF FOOD PRODUCTS	0.2300													
25	B II. BEVERAGES	0.0000													
26	C III. TOBACCO	0.0271													
27	D IV. TEXTILES														
28	E V. FOOTWEAR & WEARING APPAREL														
29	F VI. WOOD PRODUCTS														
30	G VII. FURNITURE & FIXTURES														
31	H VIII. PAPER & PAPER PRODUCTS	0.0238													
32	I IX. PUBLISHING & PRINTING														
33	J X. LEATHER PRODUCTS														
34	K XI. RUBBER PRODUCTS														
35	L XII. CHEMICALS PRODUCTS	0.1400													
36	M XIII. PETROLEUM PRODUCTS	0.1654													
37	N XIV. NON-METALLIC MINERAL PRODUCTS	0.0416													
38	O XV. BASIC METALS	0.0271													

*The Total weight of all major sector should be 1.0000.

7.5.3.3.4 Modification on the sheet of "Total Mfg (Inventory)" in the "Indexmsp_Total_Mfg(***) .xls"

Add or remove the relevant records (rows) of the Major Sector on the sheet of "Total Mfg (Inventory)" in the "Indexmsp_Total_Mfg(***) .xls"

*The lists of Major Sectors do not allow having the Blank Rows.

And, revise the all the figures on the Column of "Inventory Volume as of Base Period" (column "P").

* Sum-up Total of the "GRAND TOTAL" of the VALUE INV" on the sheet "WK-B" in the Monthly Result Files of Sector Indices (ex. "msp_index1510102.xls") by each Major Sector would be the applied to as the figures for "Sales Volume as of Base Period".

Then, revise the all the weight for each Major Sector on the Column "C" in this sheet.

*The Total weight of all major sector should be 1.0000.

8 Notice for the abnormal operations

8.1 When the abnormal Interruption has occurred in the 1st execution of the program

When the abnormal Interruption or discontinuation of the Macro Program has occurred in the 1st execution, please close all the excel file without saving and reconfirm the following issues;

- (1) Are the Dummy Monthly Result Files for 252 and 322 already prepared manually in the folder of "c:/Indexmsp"?
- (2) Is all the table files of original actual data generated by Fox Pro System already prepared in the folder of "c:/msp system v2"?
- (3) Before executing the "Indexmsp_Major.xls", does "MISSILINK.xls" already exist in the folder of "c:/Indexmsp"?
- (4) Before executing the "Indexmsp_Major.xls", is all the targeted Monthly Result Files are generated by "Indexmsp.xls" already in the folder of "c:/Indexmsp"?
- (5) Before executing the "Indexmsp_Total_mfg(XXX).xls", is all the targeted Monthly Result Files are generated by "Indexmsp_Major.xls" already in the folder of "c:/Indexmsp"?
- (6) Before executing the "Indexmsp_TSL_Commodity_XXX.xls", is all the targeted Monthly Result Files are generated by "Indexmsp.xls" already in the folder of "c:/Indexmsp"?
- (7) Is there any trouble in the table files of the original actual data from Fox Pro System and the sheet of "WK-B" in the Monthly Result Files generated by "Indexmsp.xls"? (For example, there are no commodity records but there is the row and column for the missing commodity...etc.) **-> In this case, program modification will be required on the Fox Pro System.**

8.2 When the abnormal Interruption has occurred in the 2nd (or more) execution of the program

When the abnormal Interruption or discontinuation of the Macro Program has occurred in the 2nd (or more) execution, please close all the excel file without saving and reconfirm the following issues;

- (1) Is the excel application closed whenever the monthly execution finished? -> Please close the excel application whenever the monthly execution of the Macro program finishes. (Don't proceed the monthly execution to the next month without closing the excel application after the 1st execution.) Otherwise, the program cannot create new Monthly Result Files.

(2) Ditto as mentioned above on (1)-(7) of 8.1.

8.3 If all the indices are blanked in the result files

Please reconfirm the following issues;

(1) Is there any formula in the "MISSILINK.xls"?

If the "MISSILINK.xls" has some formula, there is some possibility that the formula is copied into the Monthly Result Files of Major Sector instead of the value (actual figure).

(2) Is there any trouble in the table files of the original actual data from Fox Pro System and the sheet of "WK-B" in the Monthly Result Files generated by "Indexmsp.xls"? **-> In this case, program modification will be required on the Fox Pro System.**

Memorandum

March 05, 2003

ATT: Ms. Carmelita N. Ericta
Administrator, NSO
Re: Results of Second Trial of MSP Index Computation
CC: Ms. Estela T. De Guzman - Director of ITSD
Ms. Lourdes V. Homecillo - Chief of ISD
Mr. Efren Armonia

Dear Ms. Ericta,

Following the discussion with you on March 3, we are pleased to present the results of the second trial computation of the MSP and new MISSI indices in comparison with the current MISSI. The trial was done by ISD staff supported by Mr. Maruyama using the encoded data as of March 4.

The results of the first trial were presented to you during the meeting of February 24, which was based on the data as of January 30. Since January 30, the quality of the encoded data has been improved as the ISD staff keeps on going with the data verification correcting encoding errors and reflecting the results of the follow-ups to the establishments. The results of the second trial, therefore, better represent the sector trends, though the selection of "Key Establishments" and imputation of the missing data of them are yet to be done.

We hope that these results will serve as materials of your presentation to the NSCB on the MSP and the new MISSI.

Best regards,



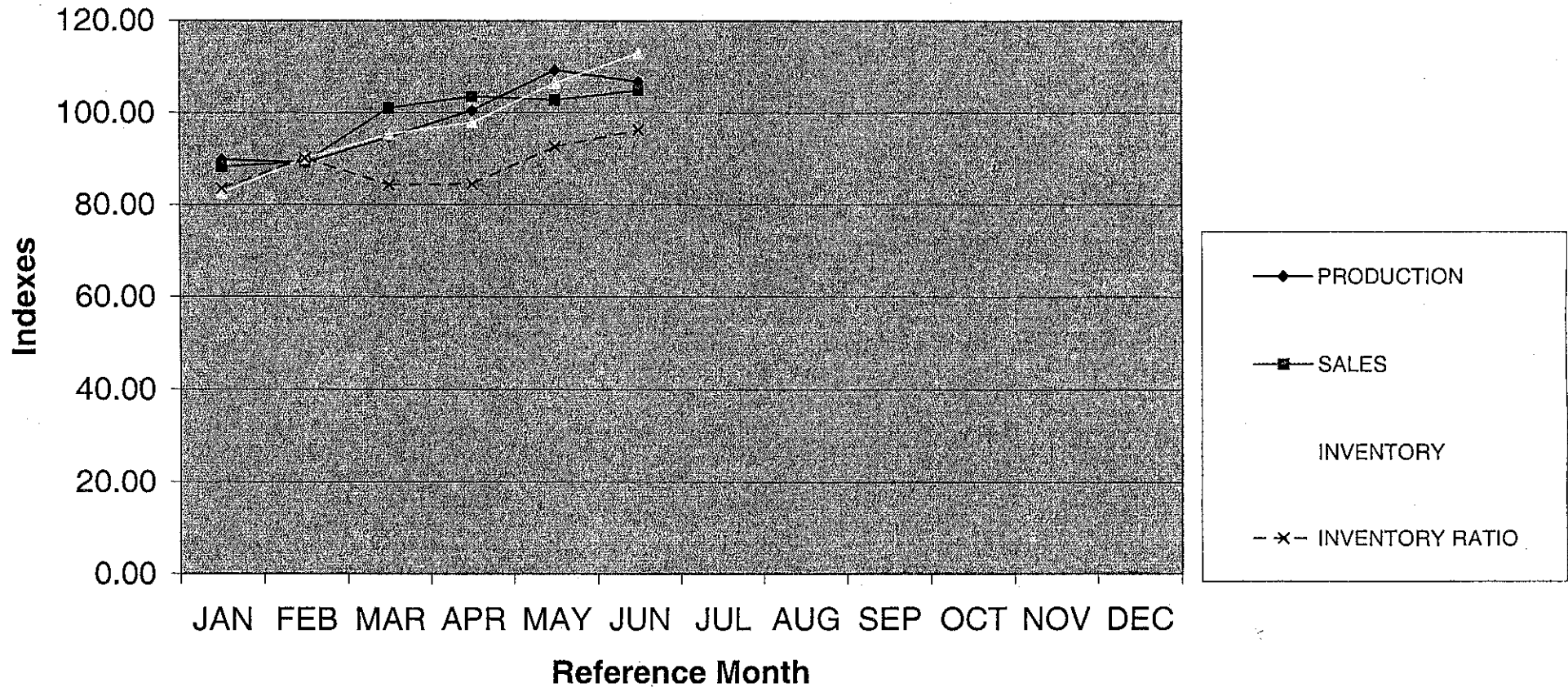
Toru Moriguchi
JICA Study Team

SECTOR INDEXES

2003/3/515:33

#	SECTOR INDEX of 151: MEAT (1-2Qtr 2002 = 100)	JAN	FEB	MAR	APR	MAY	JUN	JUL	AUG	SEP	OCT	NOV	DEC
I.	PRODUCTION	89.82	89.16	94.65	100.53	109.31	106.84						
II.	SALES	88.27	89.29	101.00	103.54	102.81	104.92						
III.	INVENTORY	82.52	90.08	95.28	97.86	106.54	113.06						
IV.	INVENTORY RATIO	83.52	90.13	84.28	84.44	92.58	96.27						

**SECTOR INDEX of 151: MEAT
(1-2Qtr 2002 = 100)**



- 98 -

Production Index

Code	Name of Commodity	JAN	FEB	MAR	APR	MAY	JUN	JUL	AUG	SEP	OCT	NOV	DEC
101	Dressed/packed poultry	100.24	93.61	77.58	95.31	115.59	117.67						
102	Dressed/packed red meat	75.26	86.61	99.41	103.21	114.34	121.17						
103	Preserved/prepared poultry and poultry products	93.90	110.49	140.65	110.76	67.73	76.47						
104	Preserved/prepared red meat and red meat products	100.76	98.03	98.21	94.01	105.18	103.82						
105	Canned/packed fish and other aquatic animals	83.15	79.94	87.36	109.77	121.07	118.70						
106	Canned/packed fruits	92.56	97.76	97.11	86.86	86.01	75.06						
107	Fruit and vegetable sauces	97.22	67.13	121.20	108.93	103.30	102.21						
108	Flour of potato	92.09	85.18	94.39	109.67	115.10	103.57						
SECTOR INDEX of 151: MEAT		89.82	89.16	94.65	100.53	109.31	106.84						

Sales Index

Code	Name of Commodity	JAN	FEB	MAR	APR	MAY	JUN	JUL	AUG	SEP	OCT	NOV	DEC	Sales Volume as of Base Period
101	Dressed/packed poultry	101.52	96.12	114.49	101.61	77.82	108.44							2,209
102	Dressed/packed red meat	84.60	88.85	103.21	101.67	110.55	111.13							8,686
103	Preserved/prepared poultry and poultry products	100.63	111.98	141.78	110.27	62.63	72.71							168
104	Preserved/prepared red meat and red meat products	90.51	90.04	88.95	107.14	110.91	112.43							5,947
105	Canned/packed fish and other aquatic animals	80.87	85.01	96.09	109.76	114.59	113.68							7,066
106	Canned/packed fruits	82.79	89.40	122.71	87.45	73.86	59.22							10,893
107	Fruit and vegetable sauces	88.48	92.78	97.89	88.64	114.98	117.23							3,460
108	Flour of potato	92.60	87.63	93.86	110.13	108.84	106.93							285,131
SECTOR INDEX of 151: MEAT		88.27	89.29	101.00	103.54	102.81	104.92							2,194,544,699

Inventory Index

Code	Name of Commodity	JAN	FEB	MAR	APR	MAY	JUN	JUL	AUG	SEP	OCT	NOV	DEC	Inventory Volume as of Base Period
101	Dressed/packed poultry	120.21	137.34	88.29	114.92	103.29	35.95							609
102	Dressed/packed red meat	80.26	80.05	97.65	109.95	113.70	118.38							3,936
103	Preserved/prepared poultry and poultry products	14.20	41.70	83.52	118.21	149.22	193.15							97
104	Preserved/prepared red meat and red meat products	68.57	84.98	108.87	109.64	111.72	116.42							5,625
105	Canned/packed fish and other aquatic animals	91.11	91.97	90.84	96.66	109.30	120.12							8,638
106	Canned/packed fruits	77.95	90.73	89.62	88.26	100.30	114.01							26,426
107	Fruit and vegetable sauces	104.35	82.72	104.90	111.17	103.15	93.71							4,894
108	Flour of potato	115.21	95.77	93.87	85.51	117.66	91.98							45,989
SECTOR INDEX of 151: MEAT		82.52	90.08	95.28	97.86	106.54	113.06							1,960,514,754

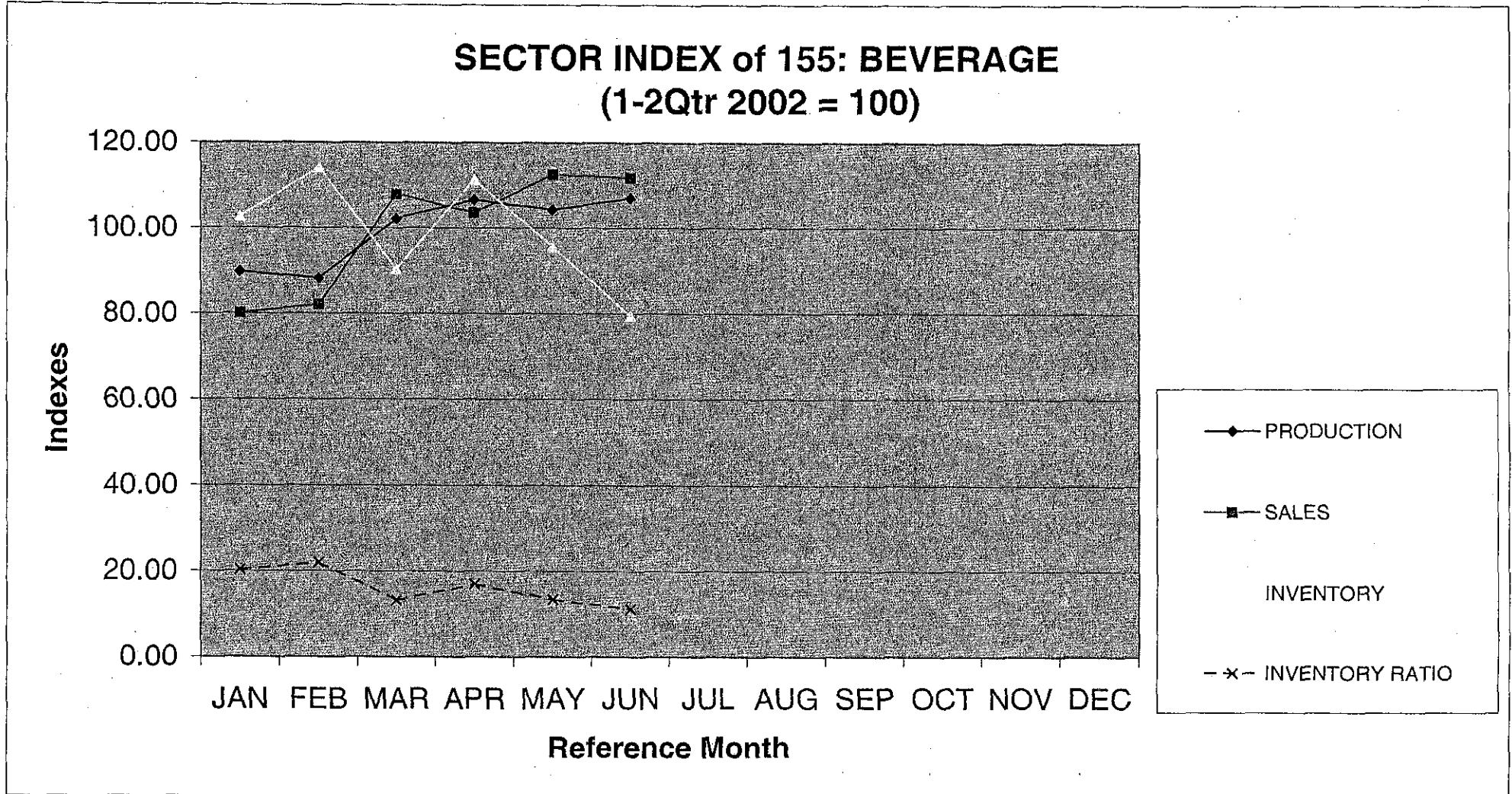
Actual Inventory Ratio

Group (M.S.)	Name of Mfg.	JAN	FEB	MAR	APR	MAY	JUN	JUL	AUG	SEP	OCT	NOV	DEC
101	Dressed/packed poultry	32.66	39.41	21.27	31.20	36.61	9.14						
102	Dressed/packed red meat	101.30	96.20	101.02	115.47	109.81	113.74						
103	Preserved/prepared poultry and poultry products	8.20	21.64	34.23	62.30	138.45	154.37						
104	Preserved/prepared red meat and red meat products	71.66	89.27	115.56	96.79	95.28	97.94						
105	Canned/packed fish and other aquatic animals	137.71	132.24	115.56	107.65	116.60	129.17						
106	Canned/packed fruits	239.38	258.07	185.70	256.62	345.27	489.54						
107	Fruit and vegetable sauces	149.77	113.23	136.09	159.28	113.93	101.52						
108	Flour of potato	20.50	18.01	16.48	12.80	17.81	14.18						
SECTOR INDEX of 151: MEAT		83.52	90.13	84.28	84.44	92.58	96.27						

SECTOR INDEXES

2003/3/515:06

#	SECTOR INDEX of 155: BEVERAGE (1-2Qtr 2002 = 100)	JAN	FEB	MAR	APR	MAY	JUN	JUL	AUG	SEP	OCT	NOV	DEC
I.	PRODUCTION	89.72	88.18	102.17	106.53	104.26	106.99						
II.	SALES	80.13	82.09	107.90	103.52	112.53	111.80						
III.	INVENTORY	102.59	114.11	90.36	111.31	95.67	79.50						
IV.	INVENTORY RATIO	20.26	22.00	13.25	17.02	13.46	11.25						



- 16 -

Production Index

Code	Name of Commodity	JAN	FEB	MAR	APR	MAY	JUN	JUL	AUG	SEP	OCT	NOV	DEC
101	Malt liquor (beer)	96.42	97.25	101.34	106.24	105.46	93.29						
102	Carbonated drinks	82.56	79.11	103.74	107.06	102.74	120.61						
103	Bottled water												
104	Powder flavored drinks	95.84	61.85	136.98	160.03	85.63	59.66						
105	Liquid flavored drinks	102.36	74.46	90.73	97.75	94.77	80.52						
106	Pure fruit juices and concentrates	103.71	90.99	79.79	99.53	115.74	110.24						
SECTOR INDEX of 155: BEVERAGE		89.72	88.18	102.17	106.53	104.26	106.99						

Sales Index

Code	Name of Commodity	JAN	FEB	MAR	APR	MAY	JUN	JUL	AUG	SEP	OCT	NOV	DEC	Sales Volume as of Base Period
101	Malt liquor (beer)	88.62	88.05	111.88	101.57	113.06	98.84							37,807
102	Carbonated drinks	72.11	79.02	104.39	105.39	112.11	123.37							166,030
103	Bottled water													
104	Powder flavored drinks	95.84	61.85	136.98	160.03	85.63	59.66							7
105	Liquid flavored drinks	80.81	83.74	99.75	99.14	90.61	83.05							237
106	Pure fruit juices and concentrates	119.80	73.53	118.41	93.25	113.76	81.25							10,424
SECTOR INDEX of 155: BEVERAGE		80.13	82.09	107.90	103.52	112.53	111.80							3,889,307,233

Inventory Index

Code	Name of Commodity	JAN	FEB	MAR	APR	MAY	JUN	JUL	AUG	SEP	OCT	NOV	DEC	Inventory Volume as of Base Period
101	Malt liquor (beer)	83.43	208.29	62.60	91.08	73.41	81.19							9,038
102	Carbonated drinks	106.66	101.91	95.35	116.91	98.15	72.90							37,425
103	Bottled water													
104	Powder flavored drinks													
105	Liquid flavored drinks	93.86	84.36	78.64	84.24	112.82	121.65							99
106	Pure fruit juices and concentrates	92.15	108.57	82.10	90.98	99.72	126.49							14,380
SECTOR INDEX of 155: BEVERAGE		102.59	114.11	90.36	111.31	95.67	79.50							616,548,656

Actual Inventory Ratio

Group (M.S.)	Name of Mfg.	JAN	FEB	MAR	APR	MAY	JUN	JUL	AUG	SEP	OCT	NOV	DEC
101	Malt liquor (beer)	7.57	19.45	4.50	7.21	5.22	6.60						
102	Carbonated drinks	40.69	35.48	25.13	30.52	24.09	16.26						
103	Bottled water												
104	Powder flavored drinks	#VALUE!	#VALUE!	#VALUE!	#VALUE!	#VALUE!	#VALUE!						
105	Liquid flavored drinks	45.64	39.59	30.98	33.39	48.93	57.56						
106	Pure fruit juices and concentrates	106.12	203.70	95.65	134.59	120.93	214.77						
SECTOR INDEX of 155: BEVERAGE		20.26	22.00	13.25	17.02	13.46	11.25						

Year : 2002

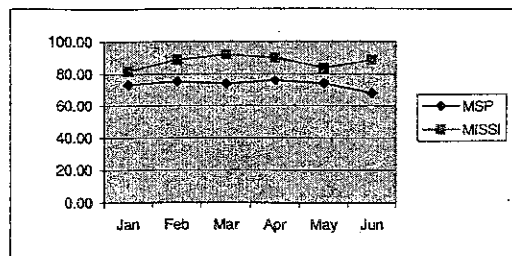
Sector: Food Manufacturing

Production Index

	Jan	Feb	Mar	Apr	May	Jun
MSP	73.06	75.13	73.70	75.86	73.91	67.75
MISSI(VoPI)	81.74	88.56	92.09	90.06	83.53	88.71
Deviation	-8.69	-13.43	-18.39	-14.20	-9.63	-20.96

* The components (sectors) are different between MSP and MISSI.

* There are still many data-missings.



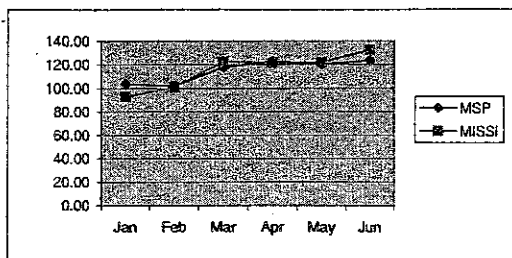
Year : 2002

Sector: Beverages

Production Index

	Jan	Feb	Mar	Apr	May	Jun
MSP	103.60	101.82	117.98	123.01	120.40	123.54
MISSI(VoPI)	92.94	101.03	122.67	121.85	122.14	132.21
Deviation	10.66	0.79	-4.69	1.17	-1.74	-8.67

* There are still some abnormal data on Commodity "102".

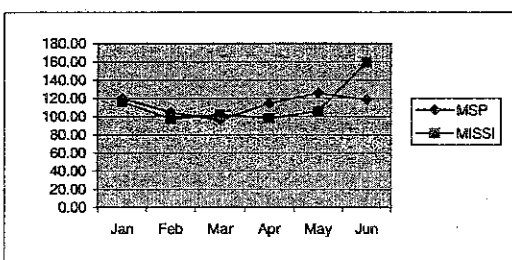


Year : 2002

Sector: Tobacco

Production Index

	Jan	Feb	Mar	Apr	May	Jun
MSP	119.90	104.77	96.32	114.38	125.84	118.33
MISSI(VoPI)	116.54	97.43	102.30	98.11	105.77	159.40
Deviation	3.36	7.34	-5.98	16.27	20.07	-41.07

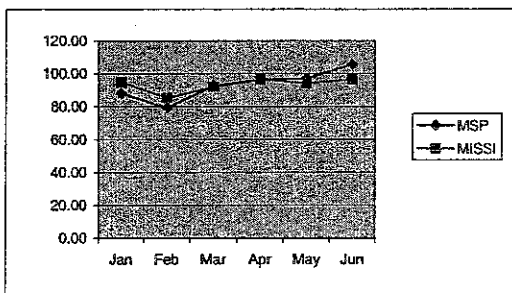


Year 2002

PSIC Paper and Paper Products

Production Index

	Jan	Feb	Mar	Apr	May	Jun
MSP	88.14	79.31	92.54	96.21	97.02	105.70
MISSI(VoPI)	94.70	85.31	91.96	96.31	94.09	96.56
Deviation	-6.56	-5.99	0.59	-0.09	2.93	9.14

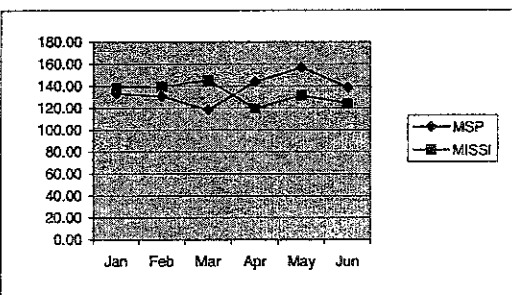


Year 2002

PSIC Chemical Products

Production Index

	Jan	Feb	Mar	Apr	May	Jun
MSP	133.36	130.63	118.35	143.69	156.67	138.95
MISSI(VoPI)	138.63	139.32	145.42	119.44	131.45	124.23
Deviation	-5.26	-8.69	-27.07	24.25	25.22	14.73

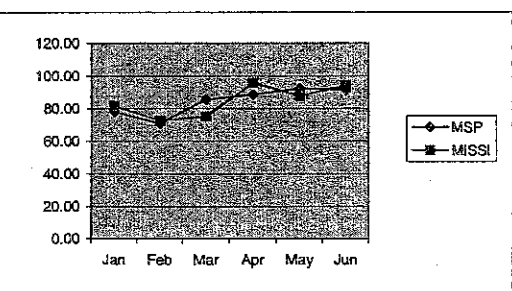


Year 2002

PSIC Petroleum Products

Production Index

	Jan	Feb	Mar	Apr	May	Jun
MSP	78.06	70.75	85.43	88.71	92.22	91.36
MISSI(VoPI)	81.65	72.49	75.09	95.64	87.63	94.04
Deviation	-3.59	-1.74	10.34	-6.93	4.59	-2.68



Year 2002

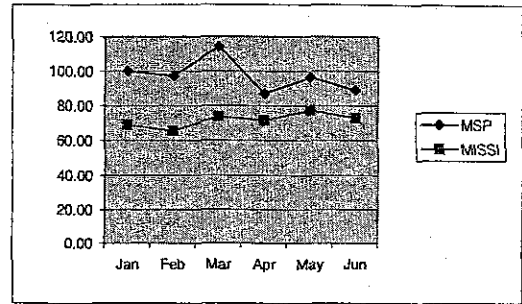
PSIC Non-Metallic Mineral Products

Production Index

	Jan	Feb	Mar	Apr	May	Jun
MSP	99.86	97.04	114.24	86.86	96.18	88.80
MISSI(VoPI)	68.98	65.68	73.77	71.36	77.20	72.80
Deviation	30.88	31.36	40.47	15.51	18.98	16.00

* "Miscellaneous products" is included in MISSI, not in MSP.

* Weight for "Miscellaneous products" is 0.28 and the average index is 17.8.



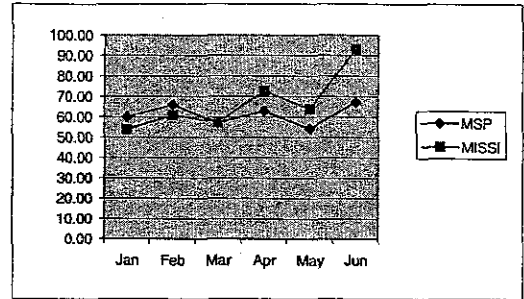
Year 2002

PSIC Basic Metals

Production Index

	Jan	Feb	Mar	Apr	May	Jun
MSP	59.91	65.84	56.97	62.74	54.10	67.21
MISSI(VoPI)	53.87	60.92	57.20	72.63	63.71	93.05
Deviation	6.05	4.91	-0.23	-9.89	-9.61	-25.84

* MISSI's index include the "Miscellaneous products" but in MSP.



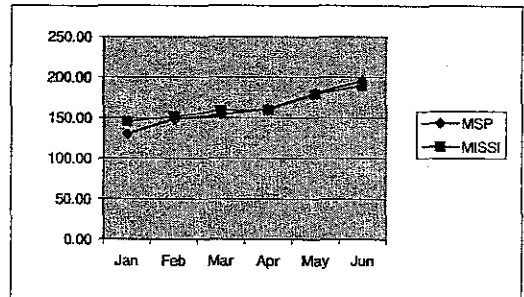
Year 2002

PSIC Fabricated Metal Products

Production Index

	Jan	Feb	Mar	Apr	May	Jun
MSP	129.86	148.19	153.49	160.61	179.86	195.43
MISSI(VoPI)	145.05	151.62	158.75	159.39	178.55	189.22
Deviation	-15.19	-3.43	-5.26	1.22	1.32	6.21

* There are still many data-missings.

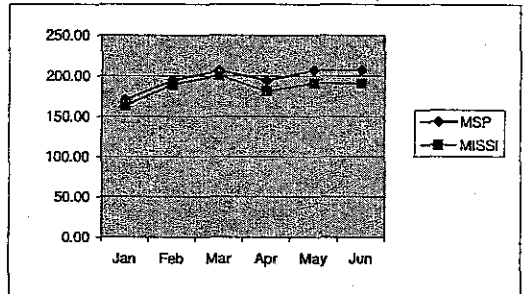


Year 2002

PSIC Electrical Machinery

Production Index

	Jan	Feb	Mar	Apr	May	Jun
MSP	170.18	194.35	206.54	193.98	207.15	207.25
MISSI(VoPI)	163.13	188.62	200.50	180.70	191.18	190.20
Deviation	7.00	5.73	6.04	13.28	15.97	17.05



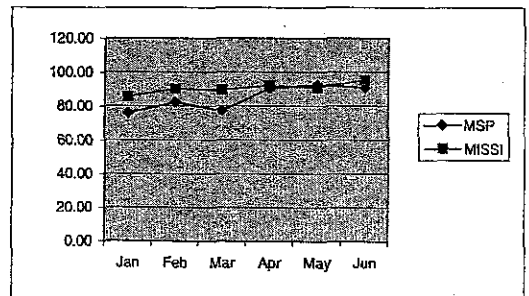
Year 2002

PSIC Transport Equipment

Production Index

	Jan	Feb	Mar	Apr	May	Jun
MSP	75.87	82.31	77.24	90.50	92.58	90.56
MISSI(VoPI)	85.62	90.00	89.39	91.97	90.84	95.27
Deviation	-9.75	-7.69	-12.15	-1.46	1.74	-4.72

* There are still some data-missings.

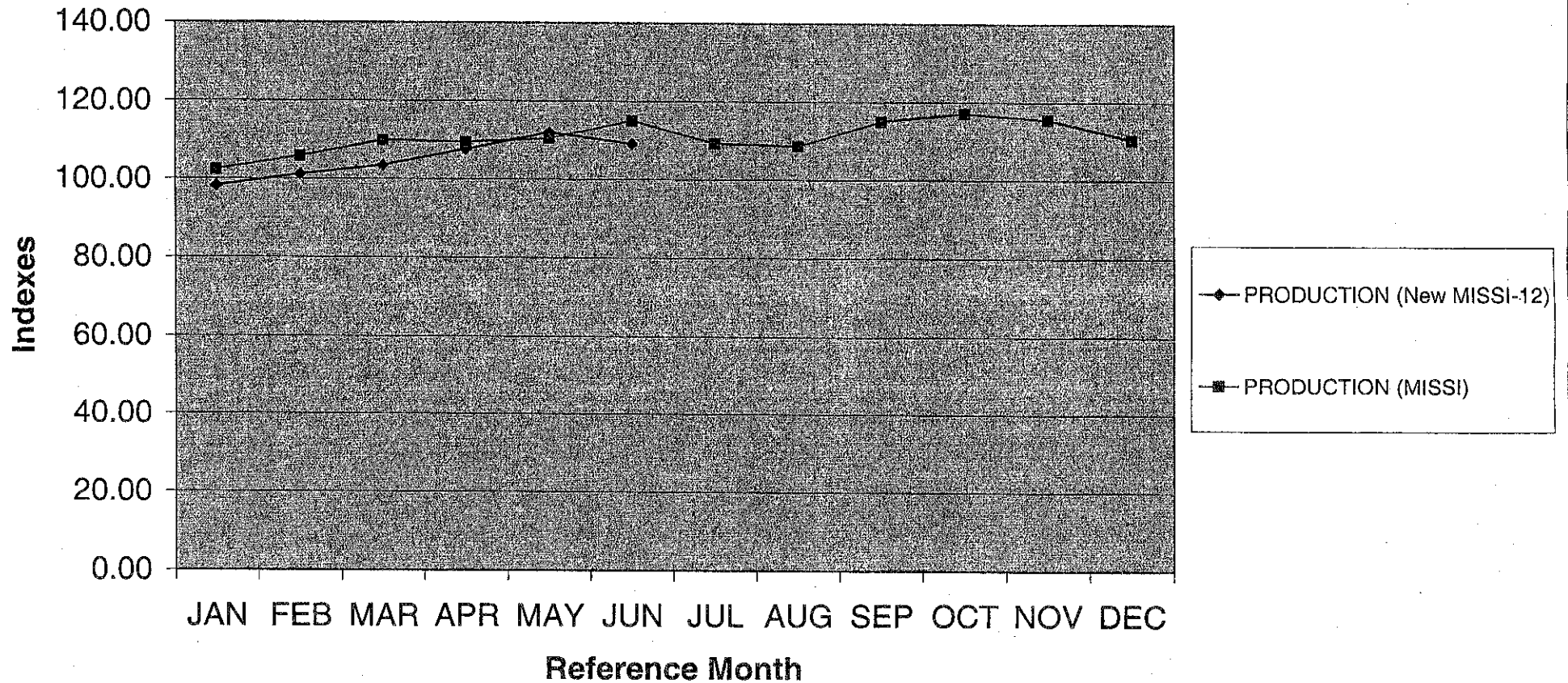


INDEXES OF TOTAL MANUFACTURING

2003/3/511:45

#	INDEXES OF TOTAL MFG.	JAN	FEB	MAR	APR	MAY	JUN	JUL	AUG	SEP	OCT	NOV	DEC
I.	PRODUCTION (New MISSI-12)	98.23	101.15	103.47	107.65	112.06	109.15						
II.	PRODUCTION (MISSI)	102.44	105.81	109.93	109.45	110.55	115.05	109.31	108.65	115.03	117.12	115.62	110.39

INDEXES OF TOTAL MANUFACTURING (New MISSI-12 vs MISSI)



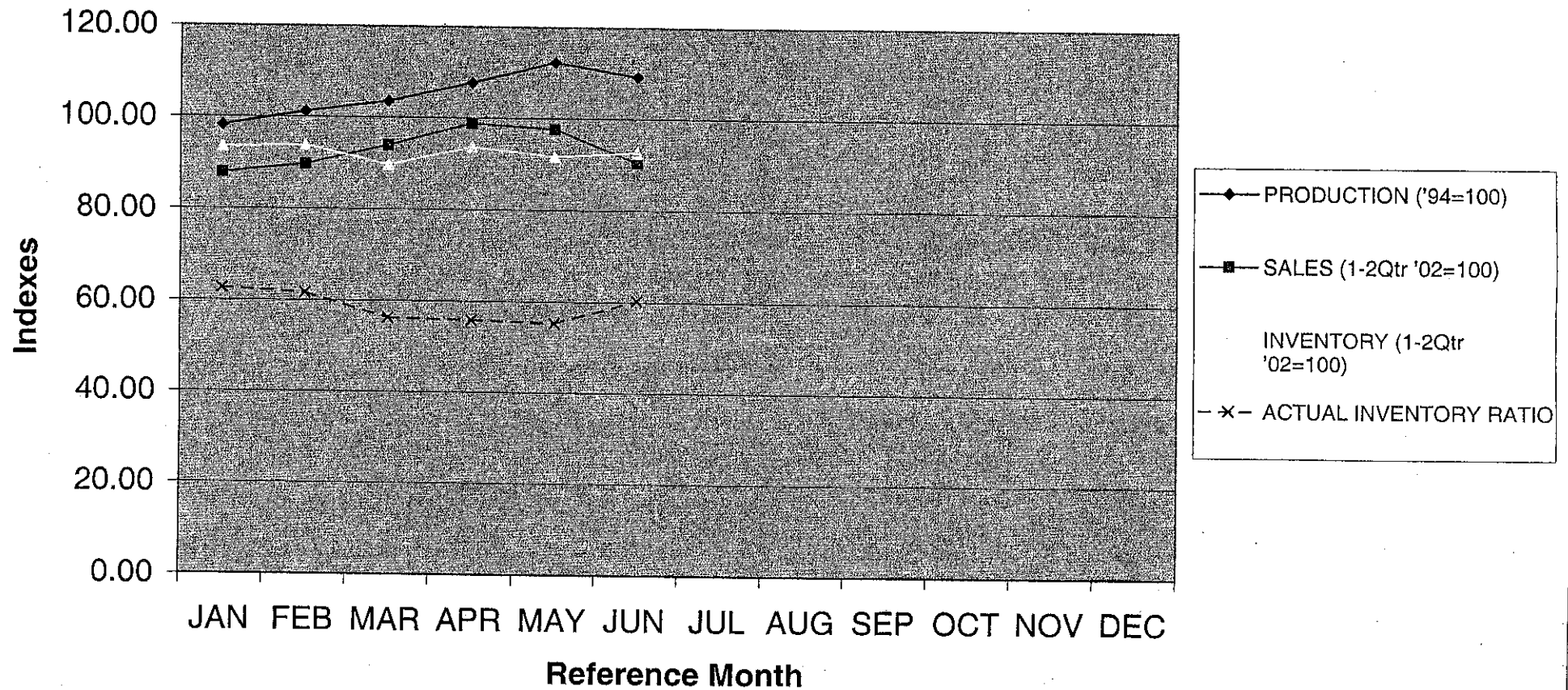
- 86 -

INDEXES OF TOTAL MANUFACTURING

2003/3/513:19

#	INDEXES OF TOTAL MFG. (New MISSI-12)	JAN	FEB	MAR	APR	MAY	JUN	JUL	AUG	SEP	OCT	NOV	DEC
I.	PRODUCTION ('94=100)	98.23	101.15	103.47	107.65	112.30	109.15						
II.	SALES (1-2Qtr '02=100)	87.86	89.71	93.94	98.81	97.66	90.37						
III.	INVENTORY (1-2Qtr '02=100)	93.49	93.86	89.68	93.67	91.63	92.63						
IV.	ACTUAL INVENTORY RATIO	62.71	61.67	56.26	55.87	55.30	60.41						

INDEXES OF TOTAL MANUFACTURING (New MISSI-12)



- 66 -

Total Mfg (Production)

Group (M.S.)	Name of Mfg. (New MISSI-12)	JAN	FEB	MAR	APR	MAY	JUN	JUL	AUG	SEP	OCT	NOV	DEC
A	I. MANUFACTURE OF FOOD PRODUCTS	73.06	75.13	73.70	75.86	73.91	67.75						
B	II. BEVERAGES	103.60	101.82	117.98	123.01	120.40	123.54						
C	III. TOBACCO	119.90	104.77	96.32	114.38	125.84	118.33						
E	V. FOOTWEAR & WEARING APPAREL	83.70	42.30	34.70	37.40	43.00	42.50	46.40	48.50	50.90	46.50	49.60	57.20
H	VIII. PAPER & PAPER PRODUCTS	88.14	79.31	92.54	96.21	97.02	105.70						
L	XII. CHEMICALS PRODUCTS	133.36	130.63	118.35	143.69	158.44	138.95						
M	XIII. PETROLEUM PRODUCTS	78.06	70.75	85.43	88.71	92.22	91.36						
N	XIV. NON-METALLIC MINERAL PRODUCTS	99.86	97.04	114.24	86.86	96.18	88.80						
O	XV. BASIC METALS	59.91	65.84	56.97	62.74	54.10	67.21						
P	XVI. FABRICATED METAL PRODUCTS	129.86	148.19	153.49	160.61	179.86	195.43						
R	XVIII. ELECTRICAL MACHINERY	170.13	194.35	206.54	193.98	207.15	207.25						
S	XIX. TRANSPORT EQUIPMENT	75.87	82.31	77.24	90.50	92.58	90.56						
TOTAL MANUFACTURING		98.23	101.15	103.47	107.65	112.30	109.15	2.30	2.40	2.52	2.30	2.46	2.83

Total Mfg (Sales)

Group (M.S.)	Name of Mfg. (New MISSI-12)	JAN	FEB	MAR	APR	MAY	JUN	JUL	AUG	SEP	OCT	NOV	DEC	Sales Volume as of Base Period
A	I. MANUFACTURE OF FOOD PRODUCTS	94.97	96.30	98.56	114.85	93.12	75.37							8,315,363,909
B	II. BEVERAGES	80.13	82.09	107.90	103.52	112.53	111.80							3,889,307,293
C	III. TOBACCO	100.34	90.86	92.58	102.87	107.02	106.33							4,083,693,424
E	V. FOOTWEAR & WEARING APPAREL													
H	VIII. PAPER & PAPER PRODUCTS	89.99	90.32	97.84	105.94	113.87	102.00							1,307,971,962
L	XII. CHEMICALS PRODUCTS	106.55	92.88	96.98	96.86	99.47	103.60							3,107,870,782
M	XIII. PETROLEUM PRODUCTS	81.74	101.31	102.38	107.41	108.39	100.78							8,278,299,529
N	XIV. NON-METALLIC MINERAL PRODUCTS	87.91	97.42	98.85	86.04	95.45	89.16							2,147,318,076
O	XV. BASIC METALS	111.04	99.77	97.05	98.00	110.55	83.50							1,231,072,866
P	XVI. FABRICATED METAL PRODUCTS	78.15	80.47	96.93	105.92	110.25	117.90							379,559,665
R	XVIII. ELECTRICAL MACHINERY	91.50	95.99	101.59	101.46	104.31	103.93							19,221,905,130
S	XIX. TRANSPORT EQUIPMENT	77.52	84.25	87.67	96.25	108.48	97.01							6,630,973,423
TOTAL MANUFACTURING		87.86	89.71	93.94	98.81	97.66	90.37							68,593,385,399

Total Mfg (Inventory)

Group (M.S.)	Name of Mfg. (New MISSI-12)	JAN	FEB	MAR	APR	MAY	JUN	JUL	AUG	SEP	OCT	NOV	DEC	Inventory Volume as of Base Period
A	I. MANUFACTURE OF FOOD PRODUCTS	79.46	86.60	90.05	105.80	103.31	95.28							10,100,185,567
B	II. BEVERAGES	102.59	114.11	90.36	111.31	95.67	79.50							615,548,656
C	III. TOBACCO	102.58	104.59	97.44	95.94	100.43	99.02							8,107,012,667
E	V. FOOTWEAR & WEARING APPAREL													
H	VIII. PAPER & PAPER PRODUCTS	106.03	96.11	100.27	102.14	93.78	101.47							1,187,327,695
L	XII. CHEMICALS PRODUCTS	106.30	109.41	95.63	96.29	94.97	91.59							2,520,471,428
M	XIII. PETROLEUM PRODUCTS	112.87	97.68	94.85	90.84	100.52	103.24							8,748,272,657
N	XIV. NON-METALLIC MINERAL PRODUCTS	113.18	90.77	108.59	79.82	71.64	81.87							1,104,066,040
O	XV. BASIC METALS	92.81	101.77	98.60	101.45	82.65	122.82							954,296,680
P	XVI. FABRICATED METAL PRODUCTS	98.58	107.57	104.25	95.92	101.24	86.76							296,292,766
R	XVIII. ELECTRICAL MACHINERY	101.50	101.88	96.17	94.03	98.68	104.37							2,617,478,735
S	XIX. TRANSPORT EQUIPMENT	94.50	95.89	85.28	103.18	89.97	90.51							3,283,485,106
TOTAL MANUFACTURING		93.49	93.86	89.68	93.67	91.63	92.63							34,534,436,997

Total Mfg (Inventory Ratio)

Group (M.S.)	Name of Mfg. (New MISSI-12)	JAN	FEB	MAR	APR	MAY	JUN	JUL	AUG	SEP	OCT	NOV	DEC
A	I. MANUFACTURE OF FOOD PRODUCTS	101.63	109.23	110.98	111.67	134.75	153.54						
B	II. BEVERAGES	20.26	22.00	13.25	17.02	13.46	11.25						
C	III. TOBACCO	77.79	87.58	80.07	70.95	71.40	70.85						
E	V. FOOTWEAR & WEARING APPAREL												
H	VIII. PAPER & PAPER PRODUCTS	106.95	96.60	93.04	87.52	74.76	90.31						
L	XII. CHEMICALS PRODUCTS	80.91	95.53	79.97	80.63	77.43	71.70						
M	XIII. PETROLEUM PRODUCTS	145.93	101.89	97.91	89.38	99.85	108.26						
N	XIV. NON-METALLIC MINERAL PRODUCTS	66.20	47.90	56.48	47.70	38.59	47.21						
O	XV. BASIC METALS	64.65	79.07	78.75	80.24	57.96	114.02						
P	XVI. FABRICATED METAL PRODUCTS	98.47	104.35	83.96	70.69	71.68	57.44						
R	XVIII. ELECTRICAL MACHINERY	15.10	14.45	12.89	12.62	12.88	13.67						
S	XIX. TRANSPORT EQUIPMENT	60.36	56.35	48.17	53.08	41.07	46.20						
TOTAL MANUFACTURING		62.71	61.67	56.26	55.87	55.90	60.41						