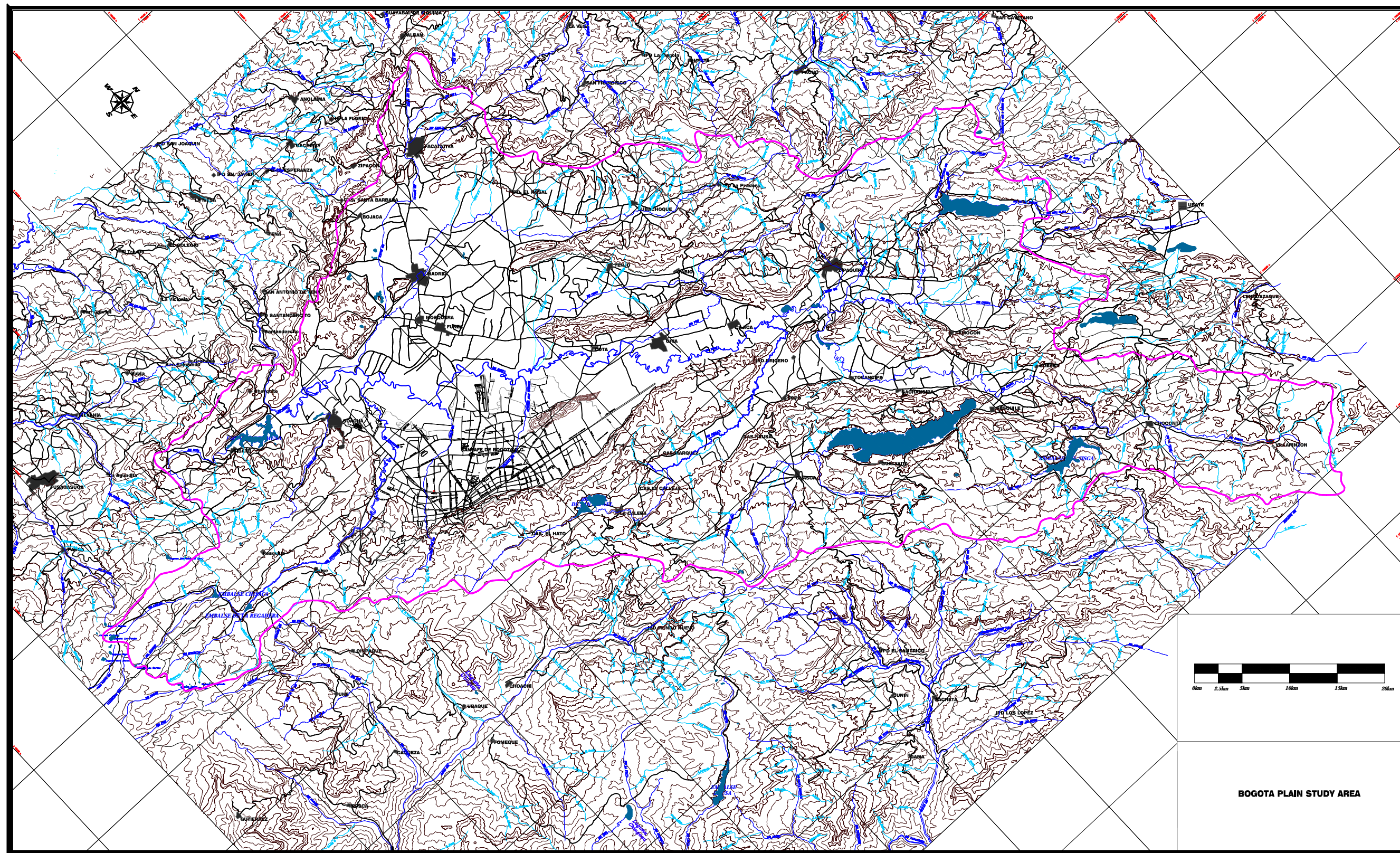


Map of the Study Area (1)



Map of the Study Area (2)

List of Reports

Summary Report	(English, Spanish and Japanese)
Main Report	(English and Spanish)
Supporting Report	(English and Spanish)
Part 1	General Condition of Study Area
Part 2	Environmental Field Survey
Part 3	Geophysical Survey
Part 4	Drilling Exploration
Part 5	Groundwater Level Observation
Part 6	Water Quality Test for Well
Part 7	Isotopic Analysis
Part 8	Meteorological Observation
Part 9	Pilot Study for Artificial Groundwater Recharge
Part 10	Land Use Analysis with Satellite Imagery
Part 11	Well Inventory
Part 12	GIS Database
Part 13	Groundwater Potential Study
Part 14	Sustainable Groundwater Development Plan
Data Book	(English and Spanish)

Final Report (Main Report)

Table of Contents

	Page
PREFACE	
LETTER OF TRANSMITTAL	
Photographs	
Map of the Study Area (1)	i
Map of the Study Area (2)	ii
List of Reposts	iii
Table of Contents	iv
List of Tables and Figures	vi
List of Abbreviations	xii
SYNOPSIS	S-1
CHAPTER 1 INTRODUCTION	1-1
1.1 Outline of the Study	1-1
1.2 Summary of Study Result	1-2
CHAPTER 2 STUDY OPERATION	2-1
2.1 Study Organization	2-1
2.2 Main Meeting	2-1
2.3 Workshop	2-3
2.4 Technical Transfer Seminars	2-4
CHAPTER 3 GENERAL CONDITIONS OF THE STUDY AREA	3-1
3.1 Socio-economic Conditions	3-1
3.1.1 Population	3-1
3.1.2 Gross Regional Domestic Product	3-2
3.1.3 Economic Sector Profile	3-3
3.2 Natural Condition	3-5
3.3 Water Resources Management	3-18
CHAPTER 4 INVESTIGATION AND ANALYSIS	4-1
4.1 Land Use Analysis with Satellite Images	4-1
4.2 Environmental Field Survey	4-7
4.2.1 Water Environment of Bogotá River	4-7
4.2.2 Groundwater and Land Subsidence	4-10
4.3 Geophysical Exploration	4-13
4.4 Drilling Exploration	4-20
4.5 Groundwater Level Observation	4-27
4.6 Water Quality Test for Wells	4-36
4.6.1 Structure of Water Quality Tests for Wells	4-36
4.6.2 Test Results	4-39
4.7 Isotopic Analysis	4-53

4.7.1	Items of isotopic analysis	4-53
4.7.2	Results of Isotopic Test	4-54
4.7.3	Review by isotopic analysis	4-54
4.8	Well Inventory	4-58
4.9	Meteorological Observation	4-63
4.10	Pilot Study	4-66
4.11	GIS Database	4-70
4.11.1	GISSystem	4-70
4.11.2	Production of GIS database	4-72
CHAPTER 5 GROUNDWATER POTENCIAL STUDY		5-1
5.1	Hydrogeology Analysis	5-1
5.2	Water Balance and Groundwater Recharge	5-3
5.2.1	Water Balance Analysis	5-3
5.2.2	Groundwater Recharge	5-12
5.3	Groundwater Simulation	5-23
5.4	Evaluation of Groundwater Potential	5-36
CHAPTER 6 GROUNDWATER DEVELOPMENT PLAN		6-1
6.1	Basic Policy of the Plan	6-1
6.1.1	Importance of Plan	6-1
6.1.2	Basic Policy of Groundwater Development	6-1
6.1.3	Basic Policy of Groundwater Conservation	6-3
6.2	Demand Projection of Groundwater	6-4
6.2.1	Current Conditions of the Study Area	6-4
6.2.2	Water Demand Projection of the Study Area	6-7
6.2.3	Groundwater Demand Projection in the Development and Conservation Plan Area	6-11
6.3	Development and Conservation Plan	6-13
6.3.1	Groundwater Development and Conservation Project in Eastern Hills of Bogotá Plain (Eastern Project)	6-13
6.3.2	Groundwater Conservation Plan of Area of High Groundwater Use in Bogotá Plain (Western Project)	6-17
6.4	Monitoring Plan	6-19
6.5	Institution and Operation/Maintenance	6-20
6.6	Design and Cost Estimate	6-23
6.6.1	Design	6-23
6.6.2	Cost Estimate	6-25
6.7	Implementation Program	6-26
6.8	Initial Environment Examination	6-28
6.9	Project Evaluation	6-29
6.9.1	Economic Evaluation	6-29
6.9.2	Financial Analysis	6-33
6.9.3	Social Evaluation	6-34
CHAPTER 7 RECOMMENDATIONS		7-1
APPENDICES		
Appendix – 1 List of Steering Committee Members and Counterparts		
Appendix – 2 Minutes of Meetings		

List of Tables and Figures

	(Page)
Table-1.1	Socio-economic Conditions of the Study Area 1-3
Table-1.2	Well Plan of Eastern project 1-11
Table-1.3	Well Plan of Western Project 1-12
Table-1.4	Monitoring Plan 1-13
Table-1.5	Facilities for Project 1-15
Table-1.6	Groundwater Development and Conservation in Bogota Plain 1-16
Table-2.1	Main Meetings 2-1
Table-2.2	Result of Workshop 2-4
Table-2.3	Summary of Technical Seminar 2-5
Table-3.1	Land Area of the Study Area 3-1
Table-3.2	Actual Population and its Growth of Bogotá and Cundinamarca 3-2
Table-3.3	GDP of Colombia & GRDP of Bogotá & Cundinamarca (1999 Constant Price) 3-2
Table- 3.4	GRDP of the Study Area (1999) 3-3
Table- 3.5	Cultivated Areas of the Study Area 3-3
Table- 3.6	Share of Floriculture and its Production Value Growth 3-4
Table- 3.7	Consumer Price Index 3-4
Table- 3.8	Lithostratigraphy in the Area of the Cundinamarca Department 3-6
Table- 3.9	Laws and Regulations Related to Water Resources Management 3-18
Table- 3.10	Responsibility Assignment for Water Resources Management 3-21
Table-4.1	Spectral Bandwidth of Landsat 7 4-1
Table-4.2	List of data acquisition of satellite data 4-1
Table-4.3	Land Use Areas of the Study Area 4-2
Table-4.4	Land Use Areas by River Basin 4-3
Table-4.5	Location of Quaternary Exploratory Drilling 4-20
Table-4.6	Result of Quaternary Exploration Drilling 4-21
Table-4.7	Result of Cretaceous Exploratory Drilling(1) 4-24
Table-4.8	Result of Cretaceous Exploratory Drilling(2) 4-25
Table-4.9	Geological condition of Well 4-25
Table-4.10	Wells for Groundwater Level Continuous Observation 4-31
Table 4.11	Specifications and estimated aquifers of wells 4-37
Table 4.12	Number of well for water quality test and items 4-39
Table 4.13	Result of Water Quality Test (Phase 1) 4-41
Table 4.14	Result of Water Quality Test (Phase 2) 4-42
Table 4.15	Result of Water Quality Test (Phase 3 test) 4-43
Table 4.16	Significant Characteristics of Groundwagter 4-44
Table 4.17	Distribution of Hydrogen sulfide of each aquifer 4-45
Table 4.18	Distribution of iron and manganese of each aquifer 4-46
Table 4.19	Selected sampling wells for isotopic analysis 4-54
Table 4.20	Result of Isotopic Analysis (Phase-1 and 3) 4-55
Table 4.21	The Number of Wells in the Study Area 4-59
Table 4.22	Well Inventory Items by the Study Team 4-59
Table 4.23	Total Yield of Study Area 4-61
Table 4.24	The Number and Aquifer of Wells by Geological Type 4-61
Table 4.25	Total number and yield of Wells by River Basin 4-62
Table 4.26	Instruments of Meteorological Observation by JICA Study Team 4-64
Table 4.27	Geological condition of Vitelma Well 4-66

Table 4.28	Result of Artificial Recharge	4-68
Table 4.29	Definition of GIS data	4-72
Table 4.30	List of GIS database	4-73
Table-5.1	Aquifer Classification of the Study Area	5-1
Table-5.2	Hydraulic Parameters of Quaternary Aquifer	5-3
Table-5.3	Hydraulic Parameters of Guadalupe Aquifer	5-3
Table-5.4	Classification of Basins	5-4
Table-5.5	Sewage Outflow	5-7
Table-5.6	Runoff Coefficients Calculated from Flow Data	5-7
Table-5.7	Runoff Coefficient of Group-1	5-9
Table-5.8	Runoff Coefficient of Basins in Group-2, 3	5-9
Table-5.9	Runoff of the Study Area	5-10
Table-5.10	Observation Station for Soil	5-13
Table-5.11	Total Available Moisture in the Soil	5-13
Table-5.12	Outline of Total Available Moisture Map	5-17
Table-5.13	Result of Groundwater Recharge Analysis	5-20
Table-5.14	Aquifer Classification and Aquifer Parameters for Groundwater Simulation	5-26
Table-5.15	Groundwater Recharge by Geology used for Large Area Groundwater Simulation	5-26
Table-5.16	Aquifer Classification and Aquifer Parameters for Groundwater Simulation	5-32
Table-5.17	Calculated Groundwater Balance by the Groundwater Simulation	5-36
Table-5.18	Groundwater out from the Study Area	5-36
Table-5.19	Current yield from well and groundwater Recharge by Basin	5-37
Table-5.20	Safe Yield by Basin	5-37
Table-6.1	Remaining Safe Yield by Basin	6-1
Table-6.2	Current Rate of Groundwater Utilization	6-2
Table-6.3	Water Sources by Type and by Sector of the Study Area	6-4
Table-6.4	Production Capacity and Actual Supply by Treatment Plant (m ³ /second)	6-5
Table-6.5	EAAB Demand Projection (medium demand level)	6-5
Table-6.6	Population of the Study Area (Unit: 1000 persons)	6-7
Table-6.7	Population by River Basin (1,000 persons)	6-7
Table-6.8	Unit Rates for Water Demand Projection	6-8
Table-6.9	Projected Domestic Water Demand (Unit: 1000m ³ /day)	6-8
Table-6.10	Projected Non-domestic Water Demand (Unit: 1000m ³ /day)	6-9
Table-6.11	Current Water Use of Floriculture	6-9
Table-6.12	Projected Floriculture Water Demand (Unit: 1000m ³ /day)	6-9
Table-6.13	Projected Agriculture Water Demand (Unit: 1000m ³ /day)	6-10
Table-6.14	Total Water Demand of the Study Area	6-10
Table-6.15	Groundwater Demand (m ³ /second)	6-11
Table-6.16	Population Projection	6-11
Table-6.17	Unit Rates Projection	6-12
Table-6.18	Groundwater Demand Projection of Eastern Hills of Bogotá City	6-12
Table-6.19	Groundwater Demand on Irrigation in the Central of Bogotá Plain	6-13
Table-6.20	Well Plan of Eastern project	6-17
Table-6.21	Well Plan of Western Project	6-18
Table-6.22	Monitoring Plan	6-19
Table-6.23	Standard Capacity of Wells	6-24
Table-6.24	Facility Design — Groundwater Development and Conservation	

	Project in Eastern Hills of Bogotá plain	6-24
Table-6.24	Facility Design Groundwater Development and Conservation Project in Eastern Hills of Bogotá Plain (continued)	6-25
Table-6.25	Facility Design Groundwater Conservation Project in Western Part of Bogotá Plain	6-25
Table-6.26	Rough Cost Estimate Groundwater development and Conservation in Plain	6-26
Table-6.27	Rough Estimate of Project Cost – Groundwater Development and Conservation of Bogotá Plain	6-27
Table-6.28	Project Description	6-28
Table-6.29	Site Description	6-29
Table-6.30	Overall Environmental Evaluation	6-29
Table-6.31	Principal Assumptions	6-30
Table-6.32	Economic Project Cost	6-30
Table-6.33	Green House Construction and Running Cost	6-30
Table-6.34	O&M Cost	6-31
Table-6.35	Assumptions for Benefit	6-32
Table-6.36	Assumptions for Benefit	6-32
Table-6.37	Result of Economic Evaluation of 2 Projects	6-32
Table-6.38	Estimated Variable Cost of Tibitoc Plant	6-33
Table-6.39	Result of Financial Evaluation of Bogotá Eastern Hill Project	6-33
Table-6.40	Implementation and Funds Scheme	6-34

	Page
Figure-2.1	General Organization of the Study ······ 2-1
Figure-3.1	Regional Geological Map ······ 3-9
Figure-3.2	Geological Section of the Regional Geology ······ 3-10
Figure-3.3	Geological Map of the Study Area ······ 3-11
Figure-3.4	Geological Section of the Study Area ······ 3-12
Figure-3.5	Meteorological and Hydrological Stations in the Study Area ······ 3-13
Figure-3.6	Meteorological and Hydrogeological Characteristics of the Study Area ··· 3-14
Figure-3.7	Annual Precipitation of the Study Area ······ 3-15
Figure-3.8	River Basin Division of the Study Area ······ 3-16
Figure-3.9	System of River Basin Division of the Study Area ······ 3-17
Figure- 3.10	Organization Chart of the Ministry of Environment ······ 3-22
Figure- 3.11	Organization Chart of CAR ······ 3-22
Figure- 3.12	Organization Chart of DAMA ······ 3-23
Figure- 3.13	Organization Chart of EAAB ······ 3-23
Figure- 3.14	Major Problems and their Cause-Result Relations ······ 3-24
Figure- 3.15	Problems regarding Over-exploitation ······ 3-25
Figure- 3.16	Problems related to Evaluation ······ 3-25
Figure- 3.17	Problems related to Institutional Capacity ······ 3-25
Figure- 3.18	Problems related to Water Right Concession ······ 3-26
Figure-4.1	LANDSAT-7 Color Composite Images of the Whole Study Area ······ 4-4
Figure-4.2	LANDSAT-7 Color Composite Images of the Urban Area of Bogotá D.C. · 4-5
Figure-4.3	Land Use Map of the Study Area ······ 4-6
Figure 4.4	The structure of water environment in Bogotá Plain ······ 4-7
Figure 4.5	Flow Rate, Total N, and Fe in Bogotá River ······ 4-9
Figure 4.6	Cu, Cr, Mn, Fe in Bogotá River ······ 4-10
Figure 4.7	A distribution map of wetlands in Bogotá D.C. ······ 4-12
Figure-4.8	Site of CSAMT Exploration ······ 4-14
Figure-4.9	Result of One-dimensional CSAMT Analysis (All Area) ······ 4-17
Figure-4.10	Result of Two-dimensional CSAMT Analysis (G Area) ······ 4-18
Figure-4.11	Result of Two-dimensional CSAMT Analysis (I Area) ······ 4-19
Figure-4.12	Sites of Exploratory Drilling of Quaternary and Cretaceous ······ 4-22
Figure-4.13	Histogram of Speed of Groundwater Fluctuation (m/year) ······ 4-28
Figure-4.14	Groundwater Level of Quaternary ······ 4-30
Figure-4.15	Groundwater Level of Cretaceous ······ 4-32
Figure-4.16	Site for Installation of Groundwater Level Recorders ······ 4-33
Figure-4.17	The Result of Groundwater Level Monitoring ······ 4-35
Figure-4.18	Well distribution map ······ 4-38
Figure-4.19	Average main water quality of each basin ······ 4-47
Figure-4.20	Tri-linear diagram ······ 4-51
Figure-4.21	Distribution map of wells for isotopic analysis ······ 4-56
Figure-4.22	Relations between δD and $\delta^{18}O$ ······ 4-58
Figure-4.23	Histogram of Unit Yield ······ 4-60
Figure-4.24	Histogram of Daily Operation Hour of Wells ······ 4-60
Figure-4.25	Histogram of Unit Yield and Average Daily Operation Hours ······ 4-60
Figure-4.26	Distribution of Yield of Study Area ······ 4-63
Figure-4.27	Sites for Installation of Meteorological Stations ······ 4-65
Figure-4.28	Observation Cycle of Pilot Study ······ 4-67

Figure-4.29	Facilities for Pilot Study	4-69
Figure-4.30	Result of Pilot Study	4-70
Figure-4.31	Scheme of GIS database	4-71
Figure-4.32	System Configuration of GIS equipments	4-72
Figure-4.33	Base map in the study	4-80
Figure-4.34	Drawing file	4-80
Figure-4.35	Spatial Map of LANDSAT5 from IGAC in 1995	4-80
Figure-4.36	Edge enhance image of NW direction	4-80
Figure-4.37	Result of JICA well inventory	4-81
Figure-4.38	Result of INGEOMINAS well data	4-81
Figure-4.39	Map of meteorological observation station location	4-81
Figure-4.40	Elevation map of contour and DEM	4-81
Figure-4.41	River stream map and river basin map	4-81
Figure-4.42	Land form map	4-81
Figure-4.43	Conventional geological map in the study	4-82
Figure-4.44	Cross section map of geological map	4-82
Figure-4.45	Hydrogeological map	4-82
Figure-4.46	Cross section map of hydrogeological map	4-82
Figure-4.47	Compiled land use and land use planning map in POT	4-82
Figure-4.48	Administrative boundary map of DANE in 2000	4-82
Figure-4.49	Sector map of EAAB in Bogotá city	4-83
Figure-4.50	Compiled water supply map of POT	4-83
Figure-4.51	Compiled sewerage map of POT	4-83
Figure-4.52	Environmental conservation map	4-83
Figure-4.53	Natural hazard map and risk map	4-83
Figure-4.54	Example of water quality map Of Ammonia	4-83
Figure-4.55	Example of well depth map	4-84
Figure-4.56	CSAMT Geophysics explorer map	4-84
Figure-5.1	Calculation Process of Hydrological Analysis	5-4
Figure-5.2	Classification of Basins	5-5
Figure-5.3	Flow curve of Bogotá River	5-5
Figure-5.4	Equi-Precipitation Map	5-6
Figure-5.5	Runoff Coefficient in Group-1	5-8
Figure-5.6	Approximate Curve of Runoff	5-8
Figure-5.7	Runoff Coefficient of Bojaca, Subachoque(2), Bogotá(3) Basin	5-11
Figure-5.8	Annual ETP	5-15
Figure-5.9	Analyzed Result of 14 Stations (by Soil Types) and Approximation by Function	5-16
Figure-5.10	Classification of Total Available Moisture in Soil	5-18
Figure-5.11	Annual ETR	5-19
Figure-5.12	Annual Groundwater Recharge	5-21
Figure-5.13	Calibration Result	5-22
Figure-5.14	Area for Groundwater Simulation	5-24
Figure-5.15	Boundary Condition of the Model	5-25
Figure-5.16	Example of Aquifer Structure of the Model	5-25
Figure-5.17	Distribution of Well	5-27
Figure-5.18	Results of Large Area Groundwater Simulation (Yield = 0% of Recharge)	5-27
Figure-5.19	Results of Large Area Groundwater Simulation (Yield = 40% of Recharge)	5-28
Figure-5.20	Change of Groundwater-shed by Pumping Rate of the Study Area	5-29
Figure-5.21	Boundary Condition of the Model	5-31

Figure-5.22	Example of Aquifer Structure of the Model	5-32
Figure-5.23	Groundwater Recharge of Simulation Model	5-33
Figure-5.24	Wells in Simulation Model	5-34
Figure-5.25	Calculated Groundwater Level of Cretaceous by Simulation	5-35
Figure-6.1	Concept of Artificial Recharge	6-4
Figure-6.2	EAAB Water Supply System: as of the end of 2001	6-6
Figure-6.3	Standard Well Structure	6-14
Figure-6.4	Well Plan for Development and Conservation of Groundwater	6-15

List of Abbreviations

Abbreviation	Spanish	English	Japanese
AWWA	Asociación Americana de Acueductos	American Water Works Association	米国水道協会
ACCI	Agencia Colombiana de Cooperación Internacional	Colombian International Cooperation Agency	コロンビア国際協力庁
ASOCOLFLORES	Asociación Colombiana de Exportadores de Flores	Colombian Flower Exporters Association	コロンビア花卉輸出業者組合
B/C	Relación Beneficio-Costo	Benefit-Cost Ratio	便益対費用比
BOD	Demanda Bioquímica de Oxígeno	Biochemical Oxygen Demand	生化学的酸素要求量
CAR	Corporacion Autónoma Regional de Cundinamarca	Regional Autonomous Corporation of Cundinamarca	クンデイナマルカ地域公社
COD	Demanda Química de Oxígeno	Chemical Oxygen Demand	化学的酸素要求量
CSAMT Method	Metodo Audio Magneto-telúrico de Fuente Controlada	Controlled Source Audio Magneto-telluric Method	CSAMT 法
DAMA	Departamento Técnico Administrativo del Medio Ambiente del Bogotá D.C.	Administrative Technical Department of Environment of Bogotá D.C.	ボゴタ首都圏地区環境局
DANE	Departamento Administrativo Nacional de Estadísticas	National Administrative Department of Statistics	国立統計局
D.C.	Districto Capital	Capital District	首都圏
DEM	Medelo Digital de Altura	Digital Elevation Model	数値標高モデル
EAAB	Empresa de Acueducto y Alcantarillado de Bogotá	Bogotá Water Supply and Sewerage Company	ボゴタ上下水道公社
EEEB	Empresa de Energía Eléctrica de Bogotá	Bogotá Electric Power Company	ボゴタ電力会社
EIRR	Tasa Interna de Retorno Economico	Economic Internal Rate of Return	経済的内部収益率
ENGESA	Empresa de Generadora de Energía S.A.	Electric Power Generation Company	発電会社
FIRR	Tasa Interna de Retorno Financiero	Financial Internal Rate of Return	財務的内部収益率
FAO	Organización de las Naciones Unidas para la Agricultura y la Alimentación	Food <u>And</u> Agriculture Organization of the United Nations	国際連合食糧農業機関
GDP	PIB (Producto Interno Bruto)	Gross Domestic Product	国内総生産
GIS	Sistema de Infomacion Geografica	Geographic Information System	地図情報システム
GL	Nivel de Terreno	Ground Level	地盤高
GPS	Sistema de Posicionamiento Global	Global Positioning System	全地球測位システム
GRDP	Producto Interno Bruto Regional	Gross Regional Domestic Product	域内総生産

Abbreviation	Spanish	English	Japanese
IDEAM	Instituto de Hidrología, Meteorología y Estudios Ambientales	Institute of Hydrology, Meteorology and Environmental Studies	水文気象環境調査庁
IGAC	Instituto Geográfico “Agustin Codazzi”	“Agustin Codazzi” Geografic Institute	“Agustin Codazzi” 国土地理院
INGEOMINAS	Instituto de Investigación e Información Geocientífica, Minera Ambiental y Nuclear	Institute of Geoscientific, Mining Environmental, Nuclear Research and Information	国立地質科学鉱山環境核調査情報研究所
IVA	Impuesto al Valor Agregado	Value Added Tax	付加価値税
JICA	Agencia de Cooperación Internacional del Japón	Japan International Cooperation Agency	日本国際協力事業団
LAN	Red de Área Local	Local Área Network	LAN (比較的狭い範囲のコンピュータ・ネットワーク)
NGO	Organización No Gubernamental	Non-governmental Organization	非政府組織
POT	Plan de Ordenamiento Territorial	Plan of Land Use and Regulation	土地利用規制計画
SQL	Lenguaje de Duda <u>Estándar</u>	Standard Query Language	SQL
S/W	Alcance del Trabajo	Scope of Work	実施細則