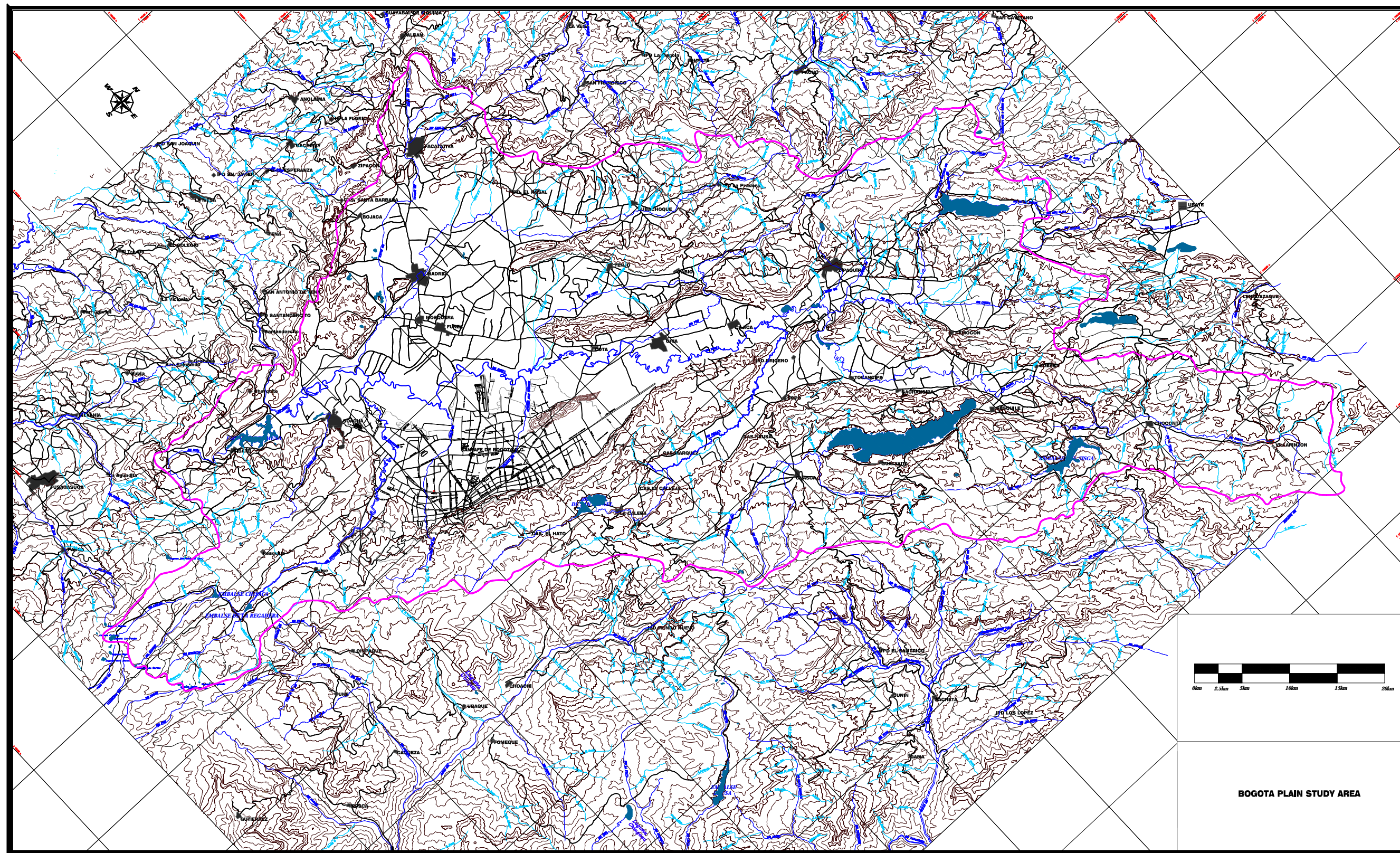


Map of the Study Area (1)



Map of the Study Area (2)

List of Reports

Summary Report (English, Spanish and Japanese)

Main Report (English and Spanish)

Supporting Report (English and Spanish)

- Part 1 General Condition of Study Area
- Part 2 Environmental Field Survey
- Part 3 Geophysical Survey
- Part 4 Drilling Exploration
- Part 5 Groundwater Level Observation
- Part 6 Water Quality Test for Well
- Part 7 Isotopic Analysis
- Part 8 Meteorological Observation
- Part 9 Pilot Study for Artificial Groundwater Recharge
- Part 10 Land Use Analysis with Satellite Imagery
- Part 11 Well Inventory
- Part 12 GIS Database
- Part 13 Groundwater Potential Study
- Part 14 Sustainable Groundwater Development Plan

Data Book (English and Spanish)

Final Report (Summary Report)

Table of Contents

	Page
PREFACE	
LETTER OF TRANSMITTAL	
Photographs	
Map of the Study Area (1)	i
Map of the Study Area (2)	ii
List of Reposts	iii
Table of Contents	iv
List of Tables and Figures	vi
List of Abbreviations	ix
SYNOPSIS	S-1
CHAPTER 1 INTRODUCTION	1-1
1.1 Outline of the Study	1-1
1.2 Study Organization	1-2
1.3 Main Meeting	1-3
1.4 Workshop	1-4
1.5 Technical Transfer Seminars	1-6
CHAPTER 2 GENERAL CONDITIONS OF THE STUDY AREA	2-1
2.1 Socio-economic Conditions	2-1
2.2 Natural Condition	2-2
2.3 Water Resources Management	2-7
CHAPTER 3 INVESTIGATION AND ANALYSIS	3-1
3.1 Land Use Analysis with Satellite Images	3-1
3.2 Environmental Field Survey	3-2
3.3 Geophysical Exploration	3-4
3.4 Drilling Exploration	3-7
3.5 Groundwater Level Observation	3-10
3.6 Water Quality Test for Well	3-16
3.7 Isotopic Analysis	3-18
3.8 Well Inventory	3-21
3.9 Meteorological Observation	3-25
3.10 Pilot Study	3-27
3.11 Reparation of GIS Database	3-30
CHAPTER 4 GROUNDWATER POTENCIAL STUDY	4-1
4.1 Hydrogeology Analysis	4-1
4.2 Water Balance and Groundwater Recharge	4-3
4.2.1 Water Balance Analysis	4-3
4.2.2 Groundwater Recharge	4-7
4.3 Groundwater Simulation	4-12
4.3.1 Large Area Groundwater Simulation	4-12

4.3.2	Groundwater Simulation of the Study Area	4-14
4.4	Evaluation of Groundwater Potential	4-18
CHAPTER 5	GROUNDWATER DEVELOPMENT PLAN	5-1
5.1	Basic Policy of the Plan	5-1
5.1.1	Importance of Plan	5-1
5.1.2	Basic Policy of Groundwater Development	5-1
5.2	Demand Projection of Groundwater	5-4
5.3	Development and Conservation Plan	5-6
5.3.1	Groundwater Development and Conservation Project in Eastern Hills of Bogotá Plain (Eastern Project).....	5-6
5.3.2	Groundwater Conservation Plan of Area of High Groundwater Use in Bogotá Plain (Western Project)	5-9
5.4	Monitoring Plan	5-10
5.5	Institution and Operation/Maintenance	5-12
5.6	Design and Cost Estimate	5-15
5.6.1	Design	5-15
5.6.2	Cost Estimate	5-17
5.7	Implementation Program	5-18
5.8	Initial Environmental Examination	5-20
5.9	Project Evaluation	5-19
5.9.1	Economic Evaluation	5-20
5.9.2	Financial Analysis	5-21
5.9.3	Social Evaluation	5-23
CHAPTER 6	RECOMMENDATIONS	6-1

List of Tables and Figures

	Page
Table-1.1	Main Meetings ······ 1-3
Table-1.2	Result of Workshop ······ 1-5
Table-1.3	Summary of Technical Seminar ······ 1-6
Table-2.1	Land Area of the Study Area ······ 2-1
Table-2.2	Socio-economic Conditions of the Study Area ······ 2-1
Table-2.3	Lithostratigraphy in the Area of the Cundinamarca Department ······ 2-3
Table-3.1	List of data acquisition of satellite data ······ 3-1
Table-3.2	Land Use Areas of the Study Area ······ 3-2
Table-3.3	Result of Quaternary Exploration Drilling ······ 3-7
Table-3.4	Result of Cretaceous Exploratory Drilling (1) ······ 3-9
Table-3.4	Result of Cretaceous Exploratory Drilling (2) ······ 3-10
Table-3.5	Wells for Groundwater Level Continuous Observation ······ 3-12
Table-3.6	Sampling Points for Well Water Quality Test and Items ······ 3-16
Table-3.7	Selected wells for isotopic analysis ······ 3-18
Table-3.8	Result of isotopic analysis ······ 3-19
Table-3.9	The Number of Wells in the Study Area ······ 3-21
Table-3.10	Total Yield of Study Area ······ 3-22
Table-3.11	The Number and Aquifer of Wells by Geological Type ······ 3-22
Table-3.12	Total number and yield of Wells by River Basin ······ 3-23
Table-3.13	Geological condition of Vitelma Well ······ 3-27
Table-3.14	Result of Artificial Recharge ······ 3-28
Table-3.15	Definition of GIS data ······ 3-32
Table-3.16	List of GIS database ······ 3-33
Table-4.1	Aquifer Classification of the Study Area ······ 4-1
Table-4.2	Hydraulic Parameters of Quaternary and Guadalupe Aquifers ······ 4-3
Table-4.3	Classification of Basins ······ 4-4
Table-4.4	Runoff of the Study Area ······ 4-5
Table-4.5	Observation Station for Soil ······ 4-8
Table-4.6	Result of Groundwater Recharge Analysis ······ 4-10
Table-4.7	Water Balance of Study Area ······ 4-10
Table-4.8	Calculated Groundwater Balance by the Groundwater Simulation ······ 4-17
Table-4.9	Groundwater out from the Study Area ······ 4-17
Table-4.10	Current yield from well and groundwater Recharge by Basin ······ 4-19
Table-4.11	Safe Yield by Basin ······ 4-20
Table-5.1	Remaining Safe Yield by Basin ······ 5-1
Table-5.2	Current Level of Groundwater Utilization ······ 5-2
Table-5.3	EAAB Demand Projection (medium demand level) ······ 5-4
Table-5.4	Total Water Demand of the Study Area ······ 5-5
Table-5.5	Groundwater Demand Projection of Eastern Hills of Bogotá City ······ 5-5
Table-5.6	Groundwater Demand on Irrigation of Bogotá Western Plain Project ······ 5-6
Table-5.7	Well Plan of Eastern Project ······ 5-9
Table-5.8	Well Plan of Western Project ······ 5-10
Table-5.9	Monitoring Plan ······ 5-11

	Page
Table-5.10 Standard Capacity of Wells	5-15
Table-5.11 Facility Design - Groundwater Development and Conservation Project in Eastern Hills of Bogotá plain	5-16
Table-5.12 Facility Design - Groundwater Conservation Project in Western Part of Bogotá Plain	5-17
Table-5.13 Rough Cost Estimate - Groundwater development and Conservation in Plain	5-18
Table-5.14 Implementation Schedule of the Project	5-19
Table-5.15 Principal Assumptions	5-20
Table-5.16 O&M Cost	5-20
Table-5.17 Assumptions for Benefit	5-21
Table-5.18 Assumptions for Benefit	5-21
Table-5.19 Result of Economic Evaluation of 2 Projects	5-21
Table-5.20 Estimated Variable Cost of Tibitoc Plant	5-22
Table-5.21 Result of Financial Evaluation of Bogotá astern Hill Project	5-22
Table-5.22 Implementation and Funds Scheme	5-22

	Page
Figure-1.1 General Organization of the Study	1-3
Figure-2.1 Geological Map of Study Area	2-5
Figure-2.2 River Basin Division of the Study Area	2-6
Figure 2.3 Organization Structure of CAR	2-9
Figure 2.4 4 Major Problems in Groundwater management and their Cause-Result Relations	2-10
Figure-3.1 LANDSAT-7 Color Composite Images of the Whole Study Area.	3-1
Figure-3.2 Land cover map in the study area	3-1
Figure-3.3 Site of CSAMT Exploration	3-6
Figure-3.4 Sites of Exploratory Drilling of Quaternary and Cretaceous	3-8
Figure-3.5 Histogram of Speed of Groundwater Fluctuation (m/year)	3-11
Figure-3.6 Groundwater Level of Quaternary	3-13
Figure-3.7 Groundwater Level of Cretaceous	3-14
Figure-3.8 Site for Installation of Groundwater Level Recorder	3-15
Figure-3.9 Relations between δD and $\delta 18O$	3-21
Figure-3.10 Distribution of Yield	3-24
Figure-3.11 Sites for Installation of Meteorological Stations	3-26
Figure-3.12 Observation Cycle of Pilot Study	3-28
Figure-3.13 Result of Pilot Study	3-29
Figure-3.14 System Configuration of GIS equipment	3-32
Figure-3.15 Base map in the study	3-34
Figure-3.16 Spatial Map of LANDSAT5 from IGAC in 1995	3-34
Figure-3.17 Edge enhance image of NW direction	3-34
Figure-3.18 Conventional geological map in the study	3-34
Figure-3.19 Hydro geological map	3-35
Figure-3.20 Administrative boundary map of DANE2000	3-35
Figure-3.21 Compiled land use and land use planning map in POT	3-35
Figure-3.22 Compiled water supply map of POT	3-35
Figure-3.23 Natural hazard map and risk map	3-36
Figure-3.24 Example of water quality map of Ammonia	3-36
Figure-3.25 Example of well depth map	3-36
Figure-3.26 CSAMT Geophysics explorer map	3-36
Figure-4.1 Calculation Process of Hydrological Analysis	4-4
Figure-4.2 Flow curve of Bogota River	4-5
Figure-4.3 Equi-Precipitation Map	4-6
Figure-4.4 Annual ETR	4-9
Figure-4.5 Annual Groundwater Recharge	4-11
Figure-4.6 Area for Groundwater Simulation	4-13
Figure-4.7 Results of Large Area Groundwater Simulation (Yield = 40% of Recharge)	4-15
Figure-4.8 Example of Aquifer Structure of the Model	4-16
Figure-4.9 Groundwater Recharge of Simulation Model	4-16
Figure-4.10 Calculated Groundwater Level of Cretaceous by Simulation	4-18
Figure-5.1 Concept of Artificial Recharge	5-4
Figure-5.2 Well Plan for Development and Conservation of Groundwater	5-7

List of Abbreviations

Abbreviation	Spanish	English	Japanese
AWWA	Asociación Americana de Acueductos	American Water Works Association	米国水道協会
ACCI	Agencia Colombiana de Cooperación Internacional	Colombian International Cooperation Agency	コロンビア国際協力庁
ASOCOLFLORES	Asociación Colombiana de Exportadores de Flores	Colombian Flower Exporters Association	コロンビア花卉輸出業者組合
B/C	Relación Beneficio-Costo	Benefit-Cost Ratio	便益対費用比
BOD	Demanda Bioquímica de Oxígeno	Biochemical Oxygen Demand	生化学的酸素要求量
CAR	Corporacion Autónoma Regional de Cundinamarca	Regional Autonomous Corporation of Cundinamarca	クンディナマルカ地域公社
COD	Demanda Química de Oxígeno	Chemical Oxygen Demand	化学的酸素要求量
CSAMT Method	Metodo Audio Magneto-telúrico de Fuente Controlada	Controlled Source Audio Magneto-telluric Method	CSAMT 法
DAMA	Departamento Técnico Administrativo del Medio Ambiente del Bogotá D.C.	Administrative Technical Department of Environment of Bogotá D.C.	ボゴタ首都圏地区環境局
DANE	Departamento Administrativo Nacional de Estadística	National Administrative Department of Statistics	国立統計局
D.C.	Distrito Capital	Capital District	首都圏
DEM	Medelo Digital de Altura	Digital Elevation Model	数値標高モデル
EAAB	Empresa de Acueducto y Alcantarillado de Bogotá	Bogotá Water Supply and Sewerage Company	ボゴタ上下水道公社
EEEB	Empresa de Energía Eléctrica de Bogotá	Bogotá Electric Power Company	ボゴタ電力会社
EIRR	Tasa Interna de Retorno Economico	Economic Internal Rate of Return	経済的内部収益率
EMGESA	Empresa de Generadora de Energía S.A.	Electric Power Generation Company	発電会社
FIRR	Tasa Interna de Retorno Financiero	Financial Internal Rate of Return	財務的内部収益率
FAO	Organización de las Naciones Unidas para la Agricultura y la Alimentación	Food <u>And</u> Agriculture Organization of the United Nations	国際連合食糧農業機関
GDP	PIB (Producto Interno Bruto)	Gross Domestic Product	国内総生産
GIS	Sistema de Información Geográfica	Geographic Information System	地図情報システム
GL	Nivel de Terreno	Ground Level	地盤高
GPS	Sistema de Posicionamiento Global	Global Positioning System	全地球測位システム
GRDP	Producto Interno Bruto Regional	Gross Regional Domestic Product	域内総生産
IDEAM	Instituto de Hidrología, Meteorología y Estudios Ambientales	Institute of Hydrology, Meteorology and Environmental Studies	水文気象環境調査庁
IGAC	Instituto Geográfico “Agustin Codazzi”	“Agustin Codazzi” Geografic Institute	“Agust in Codazzi” 国土地理院

INGEOMINAS	Instituto de Investigación e Información Geocientífica, Minera Ambiental y Nuclear	Institute of Geoscientific, Mining Environmental, Nuclear Research and Information	国立地質科学鉱山環境核調査情報研究所
IVA	Impuesto al Valor Agregado	Value Added Tax	付加価値税
JICA	Agencia de Cooperación Internacional del Japón	Japan International Cooperation Agency	日本国際協力事業団
LAN	Red de Área Local	Local Área Network	LAN (比較的狭い範囲のコンピュータ・ネットワーク)
NGO	Organización No Gubernamental	Non-governmental Organization	非政府組織
POT	Plan de Ordenamiento Territorial	Plan of Land Use and Regulation	土地利用規制計画
SQL	Lenguaje de Duda <u>Estándar</u>	Standard Query Language	SQL
S/W	Alcance del Trabajo	Scope of Work	実施細則