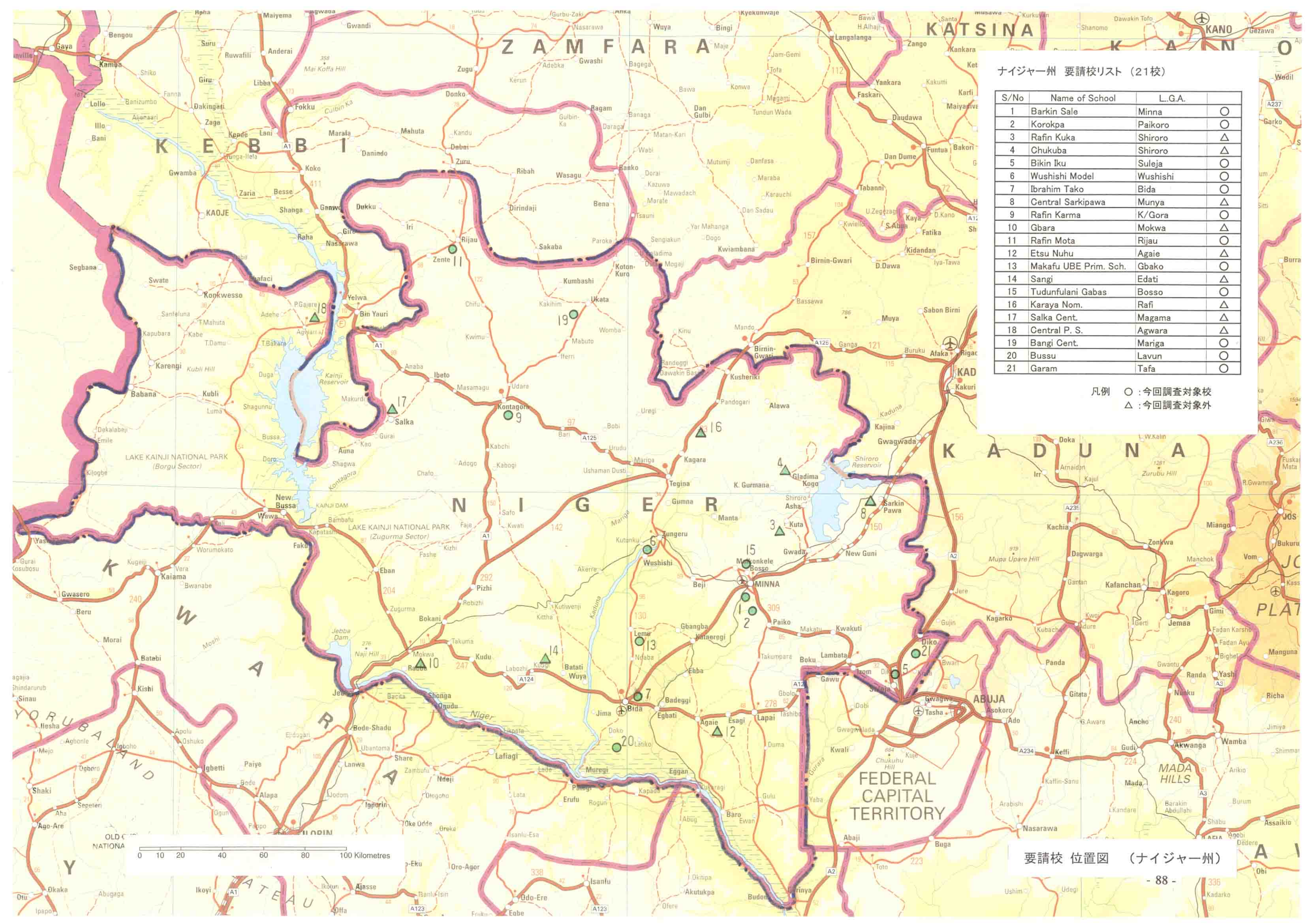


カドゥナ州 要請校リスト (50校)

S/No	Name of School	L.G.A.	
1	Bagoma	B/Gwari	△
2	Auchan Central	Ikara	△
3	Kuryas	Jaba	△
4	Ung. Rana Baduku	Jema'a	○
5	Gangarida	Ikara	△
6	Gwagwada	Chikun	△
7	Gadas	Kubau	△
8	Kurmin Biri I	Kachia	○
9	Kidandan	Giwa	△
10	Gadangayan	Igabi	○
11	Shadalafiya	Kagarko	△
12	Likoro	Kudan	○
13	Safogida	Kaura	○
14	Aba Malami	Makarfi	△
15	Doka	Kajuru	○
16	Ung. Madauchi	Kudan	△
17	Zanbina	Kauru	△
18	Ung. Gwari	Kaduna North	○
19	Wasa	Sanga	△
20	Maigamo	Lere	○
21	Faki Road	Kaduna South	○
22	Murchia	Sabongari	○
23	Sakwan	Z/Kataf	△
24	Tankarau Nomadic	Zaria	△
25	Richifa	Soba	△
26	Zonkwa VI	Z/Kataf	△
27	Gaskiya	Zaria	○
28	Sada	Makarfi	○
29	Zankan	Kaura	△
30	Dawaki Bassa	B/Gwari	△
31	Fai	Jaba	△
32	Udg. Sarki Pambeguwa	Kubau	○
33	LEA Asso	Jema'a	△
34	Soba Central	Soba	○
35	Tattaura	Sanga	△
36	Angwan Tobo	Z/Kataf	○
37	Abdulrahman Mora	Zaria	○
38	Kamuru II	Z/Kadaf	△
39	Kadabo	Makarfi	△
40	Gure I	Lere	△
41	Danmaikogi I	Kauru	△
42	Jushi	Sabongari	○
43	Sabon Yelwa	Chikun	○
44	Kaya	Giwa	△
45	Zangonaya	Igabi	○
46	Katambi	Kachia	△
47	Ibrahim Taiwo	Kaduna North	○
48	Maichibi I	Kaduna South	○
49	Kushe II	Kagarko	△
50	Gefe	Kajuru	△

凡例 ○ : 今回調査対象校  
△ : 今回調査対象外

要請校 位置図 (カドゥナ州)

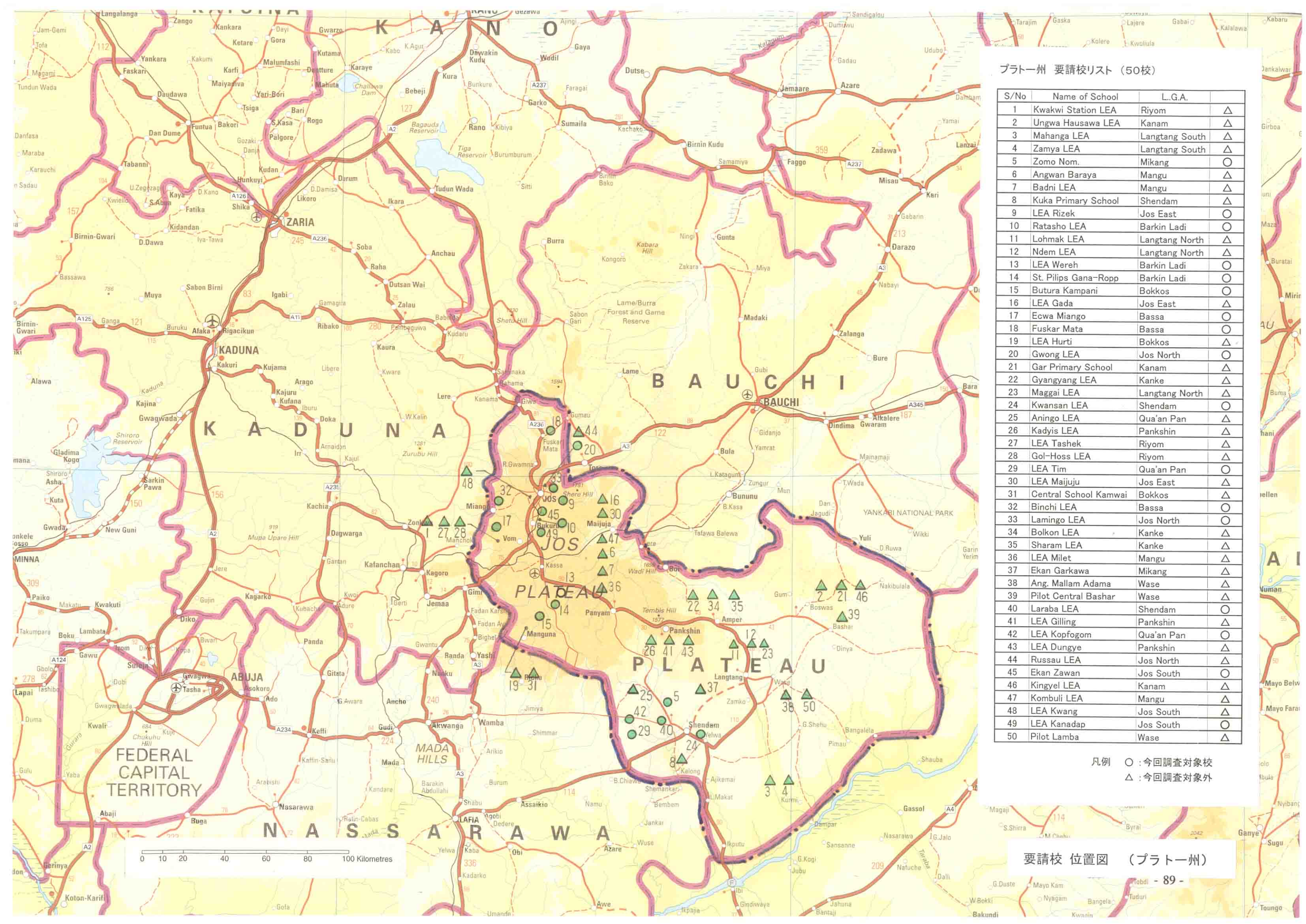


ナイジャー州 要請校リスト (21校)

S/No	Name of School	L.G.A.	
1	Barkin Sale	Minna	○
2	Korokpa	Paikoro	○
3	Rafin Kuka	Shiroro	△
4	Chukuba	Shiroro	△
5	Bikin Iku	Suleja	○
6	Wushishi Model	Wushishi	○
7	Ibrahim Tako	Bida	○
8	Central Sarkipawa	Munya	△
9	Rafin Karma	K/Gora	○
10	Gbara	Mokwa	△
11	Rafin Mota	Rijau	○
12	Etsu Nuhu	Agai	△
13	Makafu UBE Prim. Sch.	Gbako	○
14	Sangi	Edati	△
15	Tudunfulani Gabas	Bosso	○
16	Karaya Nom.	Rafi	△
17	Salka Cent.	Magama	△
18	Central P. S.	Agwara	△
19	Bangi Cent.	Mariga	○
20	Bussu	Lavun	○
21	Garam	Tafa	○

凡例 ○ : 今回調査対象校  
 △ : 今回調査対象外

要請校 位置図 (ナイジャー州)



プラトー州 要請校リスト (50校)

S/No	Name of School	L..G.A.	
1	Kwakwi Station LEA	Riyom	△
2	Ungwa Hausawa LEA	Kanam	△
3	Mahanga LEA	Langtang South	△
4	Zamya LEA	Langtang South	△
5	Zomo Nom.	Mikang	○
6	Angwan Baraya	Mangu	△
7	Badni LEA	Mangu	△
8	Kuka Primary School	Shendam	△
9	LEA Rizek	Jos East	○
10	Ratasho LEA	Barkin Ladi	○
11	Lohmak LEA	Langtang North	△
12	Ndem LEA	Langtang North	△
13	LEA Wereh	Barkin Ladi	○
14	St. Pilips Gana-Ropp	Barkin Ladi	○
15	Butura Kampani	Bokkos	○
16	LEA Gada	Jos East	△
17	Ecwa Miango	Bassa	○
18	Fuskar Mata	Bassa	○
19	LEA Hurti	Bokkos	△
20	Gwong LEA	Jos North	○
21	Gar Primary School	Kanam	△
22	Gyangyang LEA	Kanke	△
23	Maggai LEA	Langtang North	△
24	Kwansan LEA	Shendam	○
25	Aningo LEA	Qua'an Pan	△
26	Kadyis LEA	Pankshin	△
27	LEA Tashek	Riyom	△
28	Gol-Hoss LEA	Riyom	△
29	LEA Tim	Qua'an Pan	○
30	LEA Maijuju	Jos East	△
31	Central School Kamwai	Bokkos	△
32	Binchi LEA	Bassa	○
33	Lamingo LEA	Jos North	○
34	Bolkon LEA	Kanke	△
35	Sharam LEA	Kanke	△
36	LEA Milet	Mangu	△
37	Ekan Garkawa	Mikang	△
38	Ang. Mallam Adama	Wase	△
39	Pilot Central Bashar	Wase	△
40	Laraba LEA	Shendam	○
41	LEA Gilling	Pankshin	△
42	LEA Kopfogom	Qua'an Pan	○
43	LEA Dungye	Pankshin	△
44	Russau LEA	Jos North	△
45	Ekan Zawan	Jos South	○
46	Kingyel LEA	Kanam	△
47	Kombuli LEA	Mangu	△
48	LEA Kwang	Jos South	△
49	LEA Kanadap	Jos South	○
50	Pilot Lamba	Wase	△

凡例 ○ : 今回調査対象校  
△ : 今回調査対象外

要請校 位置図 (プラトー州)

