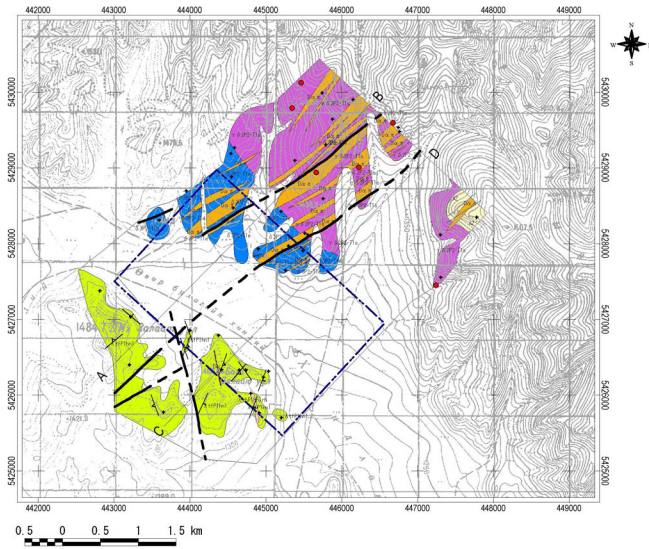


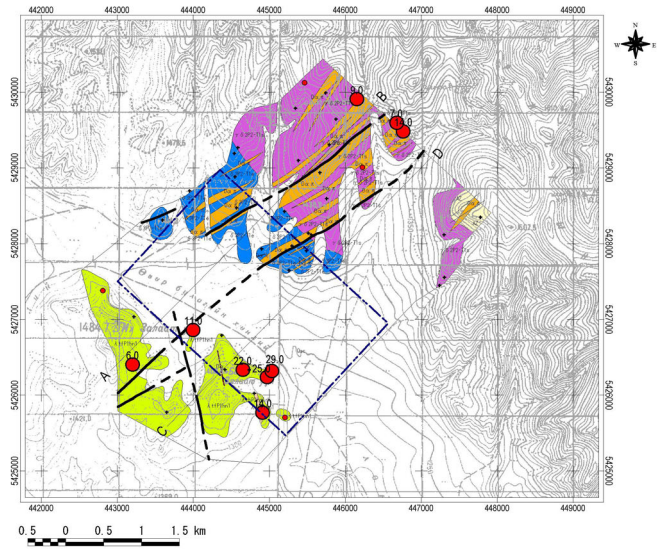
Appendix 8 Distribution map of statistical data of rock chemical samples for the Erdenet SE area and the Under/Shand area



**LEGEND**

- |                 |                  |                         |
|-----------------|------------------|-------------------------|
| <b>Au (ppb)</b> | <b>Geology</b>   | <b>Strikes</b>          |
| ● 5.0 -         | Qac              | — Bedding               |
| ● 1.0 - 5.0     | λ tP1hn1         | — Flow                  |
| ● - 1.0         | λ rhP1hn1rh      | — Welded flow           |
|                 | δ 3P2-T1e        | — Qz Vein or Spec. Vein |
|                 | γ δ 2P2-T1s      | — Platy joint           |
|                 | D α π            | — Fault                 |
|                 | AZ               | — Inferred Fault        |
|                 | <b>Fault</b>     | <b>IP survey area</b>   |
|                 | — Fault          | — Section line          |
|                 | — Inferred Fault |                         |

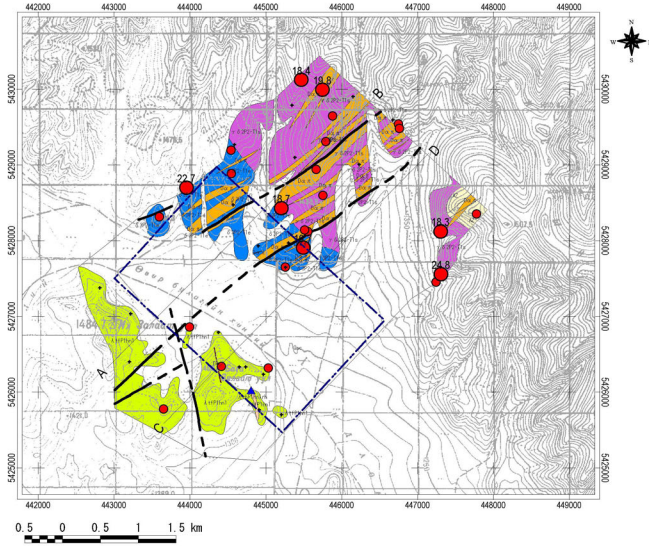
**Erdenet SE area**



**LEGEND**

- |                 |                  |                         |
|-----------------|------------------|-------------------------|
| <b>As (ppm)</b> | <b>Geology</b>   | <b>Strikes</b>          |
| ● 6.0 -         | Qac              | — Bedding               |
| ● 1.0 - 6.0     | λ tP1hn1         | — Flow                  |
| ● - 1.0         | λ rhP1hn1rh      | — Welded flow           |
|                 | δ 3P2-T1e        | — Qz Vein or Spec. Vein |
|                 | γ δ 2P2-T1s      | — Platy joint           |
|                 | D α π            | — Fault                 |
|                 | AZ               | — Inferred Fault        |
|                 | <b>Fault</b>     | <b>IP survey area</b>   |
|                 | — Fault          | — Section line          |
|                 | — Inferred Fault |                         |

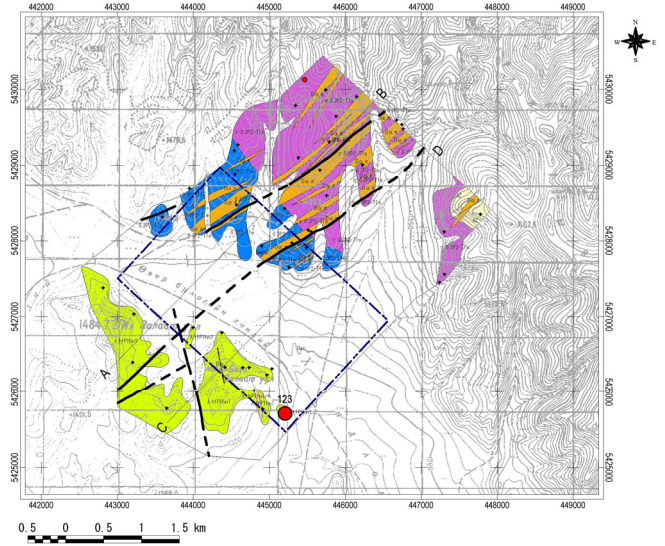
**Erdenet SE area**



**LEGEND**

- |                 |                  |                         |
|-----------------|------------------|-------------------------|
| <b>Sb (ppm)</b> | <b>Geology</b>   | <b>Strikes</b>          |
| ● 18.0 -        | Qac              | — Bedding               |
| ● 12.0 - 18.0   | λ tP1hn1         | — Flow                  |
| ● 3.2 - 12.0    | λ rhP1hn1rh      | — Welded flow           |
| ● 1.0 - 3.2     | δ 3P2-T1e        | — Qz Vein or Spec. Vein |
| ▲ - 1.0         | γ δ 2P2-T1s      | — Platy joint           |
|                 | D α π            | — Fault                 |
|                 | AZ               | — Inferred Fault        |
|                 | <b>Fault</b>     | <b>IP survey area</b>   |
|                 | — Fault          | — Section line          |
|                 | — Inferred Fault |                         |

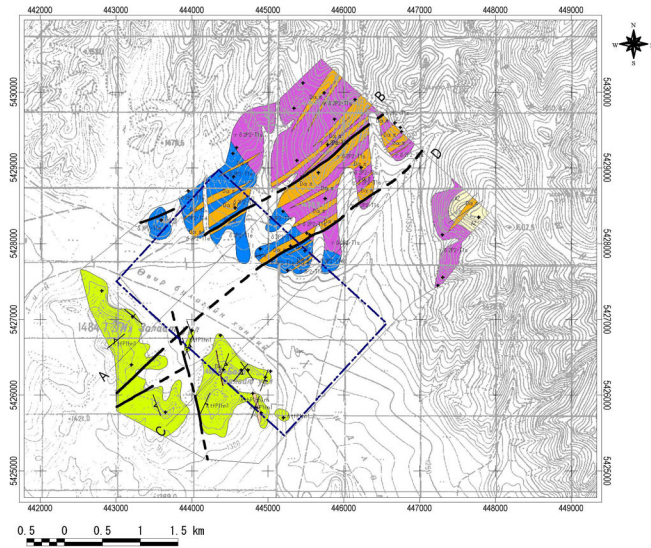
**Erdenet SE area**



**LEGEND**

- |                 |                  |                         |
|-----------------|------------------|-------------------------|
| <b>Hg (ppb)</b> | <b>Geology</b>   | <b>Strikes</b>          |
| ● 90.0 -        | Qac              | — Bedding               |
| ● 32.0 - 90.0   | λ tP1hn1         | — Flow                  |
| ● 10.0 - 32.0   | λ rhP1hn1rh      | — Welded flow           |
| ● - 10.0        | δ 3P2-T1e        | — Qz Vein or Spec. Vein |
|                 | γ δ 2P2-T1s      | — Platy joint           |
|                 | D α π            | — Fault                 |
|                 | AZ               | — Inferred Fault        |
|                 | <b>Fault</b>     | <b>IP survey area</b>   |
|                 | — Fault          | — Section line          |
|                 | — Inferred Fault |                         |

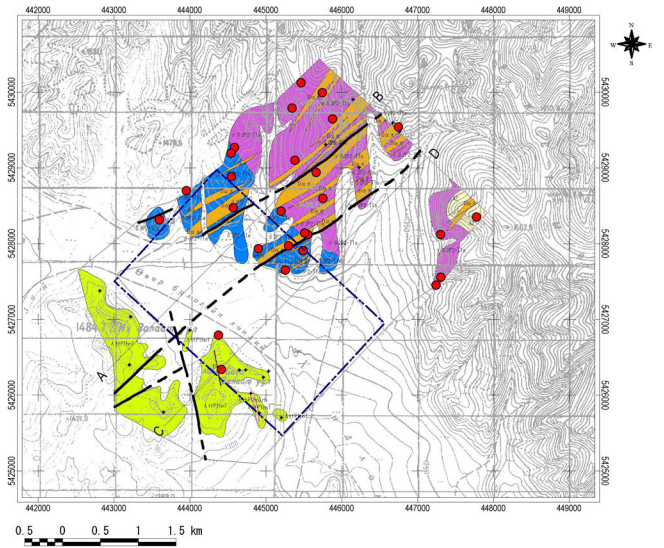
**Erdenet SE area**



**LEGEND**

- |  |  |   |
|--|--|---|
| <p><b>Ag (ppm)</b></p> <ul style="list-style-type: none"> <li>● 1.5 -</li> <li>● 0.5 - 1.5</li> <li>● - 0.5</li> </ul> | <p><b>Geology</b></p> <ul style="list-style-type: none"> <li>Qac</li> <li>λ tP1hn1</li> <li>λ rhP1hn1rh</li> <li>δ 3P2-T1e</li> <li>γ δ 2P2-T1s</li> <li>D α π</li> <li>D α π</li> <li>AZ</li> </ul> | <p><b>Strikes</b></p> <ul style="list-style-type: none"> <li>Bedding</li> <li>Flow</li> <li>Welded flow</li> <li>Qz Vein or Spec. Vein</li> <li>Platy joint</li> <li>Fault</li> </ul> |
|  | <p><b>Fault</b></p> <ul style="list-style-type: none"> <li>Fault</li> <li>Inferred Fault</li> </ul>  | <p><b>IP survey area</b></p> <ul style="list-style-type: none"> <li>Section line</li> </ul>   |

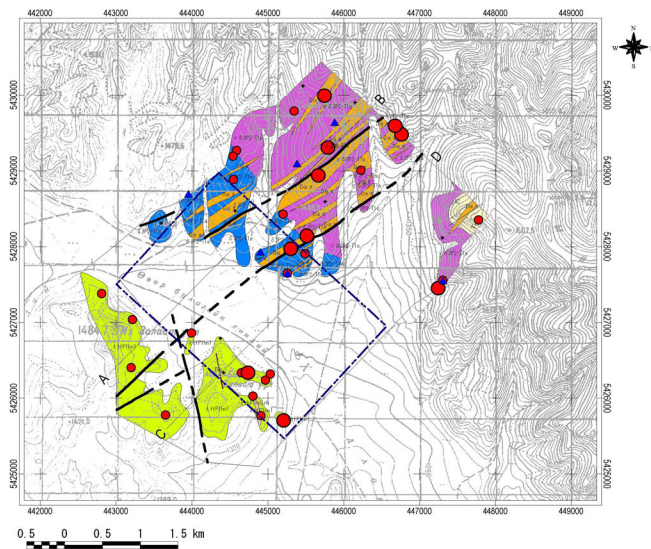
Erdenet SE area



**LEGEND**

- |  |  |   |
|--|--|---|
| <p><b>Al (%)</b></p> <ul style="list-style-type: none"> <li>● 8.5 -</li> <li>● 6.4 - 8.5</li> <li>● - 6.4</li> </ul> | <p><b>Geology</b></p> <ul style="list-style-type: none"> <li>Qac</li> <li>λ tP1hn1</li> <li>λ rhP1hn1rh</li> <li>δ 3P2-T1e</li> <li>γ δ 2P2-T1s</li> <li>D α π</li> <li>D α π</li> <li>AZ</li> </ul> | <p><b>Strikes</b></p> <ul style="list-style-type: none"> <li>Bedding</li> <li>Flow</li> <li>Welded flow</li> <li>Qz Vein or Spec. Vein</li> <li>Platy joint</li> <li>Fault</li> </ul> |
|  | <p><b>Fault</b></p> <ul style="list-style-type: none"> <li>Fault</li> <li>Inferred Fault</li> </ul>  | <p><b>IP survey area</b></p> <ul style="list-style-type: none"> <li>Section line</li> </ul>   |

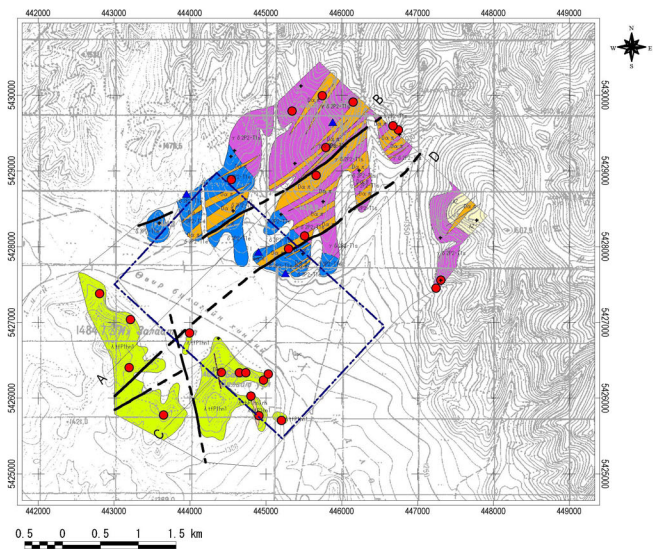
Erdenet SE area



**LEGEND**

- |  |  |   |
|--|--|---|
| <p><b>Ba (ppm)</b></p> <ul style="list-style-type: none"> <li>● 900.0 -</li> <li>● 600.0 - 900.0</li> <li>● 300.0 - 600.0</li> <li>● 100.0 - 300.0</li> <li>● - 100.0</li> </ul> | <p><b>Geology</b></p> <ul style="list-style-type: none"> <li>Qac</li> <li>λ tP1hn1</li> <li>λ rhP1hn1rh</li> <li>δ 3P2-T1e</li> <li>γ δ 2P2-T1s</li> <li>D α π</li> <li>D α π</li> <li>AZ</li> </ul> | <p><b>Strikes</b></p> <ul style="list-style-type: none"> <li>Bedding</li> <li>Flow</li> <li>Welded flow</li> <li>Qz Vein or Spec. Vein</li> <li>Platy joint</li> <li>Fault</li> </ul> |
|  | <p><b>Fault</b></p> <ul style="list-style-type: none"> <li>Fault</li> <li>Inferred Fault</li> </ul>  | <p><b>IP survey area</b></p> <ul style="list-style-type: none"> <li>Section line</li> </ul>   |

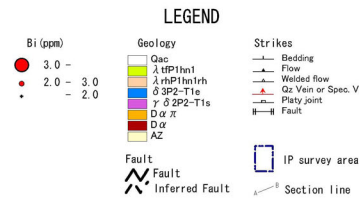
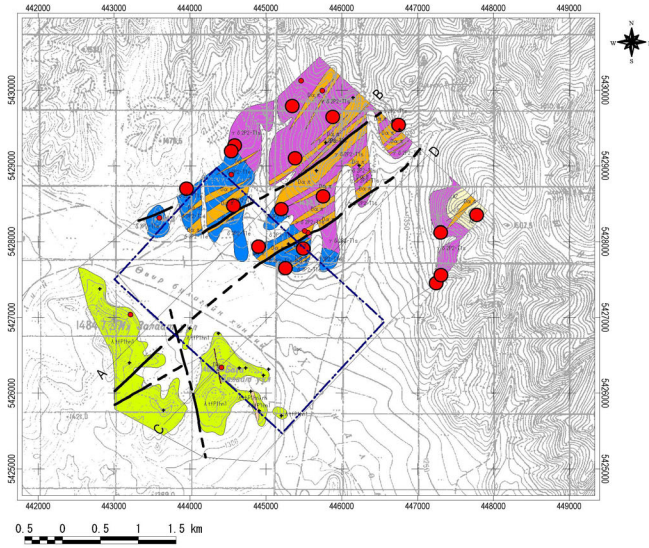
Erdenet SE area



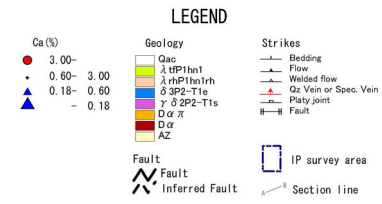
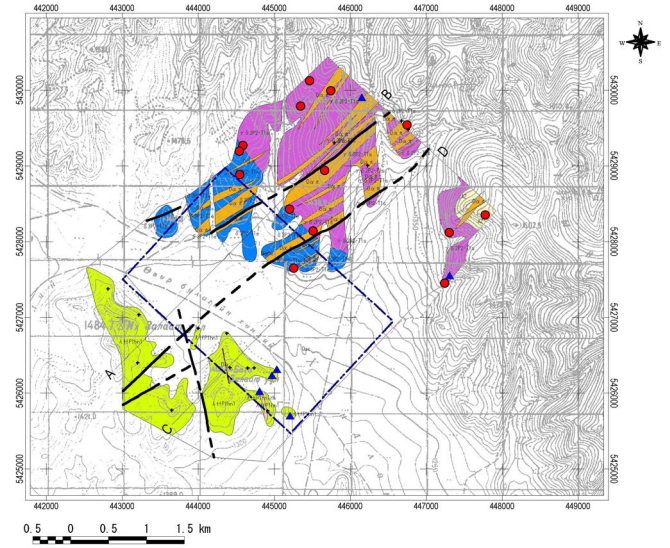
**LEGEND**

- |  |  |   |
|--|--|---|
| <p><b>Be (ppm)</b></p> <ul style="list-style-type: none"> <li>● 12.0 -</li> <li>● 8.0 - 12.0</li> <li>● - 8.0</li> </ul> | <p><b>Geology</b></p> <ul style="list-style-type: none"> <li>Qac</li> <li>λ tP1hn1</li> <li>λ rhP1hn1rh</li> <li>δ 3P2-T1e</li> <li>γ δ 2P2-T1s</li> <li>D α π</li> <li>D α π</li> <li>AZ</li> </ul> | <p><b>Strikes</b></p> <ul style="list-style-type: none"> <li>Bedding</li> <li>Flow</li> <li>Welded flow</li> <li>Qz Vein or Spec. Vein</li> <li>Platy joint</li> <li>Fault</li> </ul> |
|  | <p><b>Fault</b></p> <ul style="list-style-type: none"> <li>Fault</li> <li>Inferred Fault</li> </ul>  | <p><b>IP survey area</b></p> <ul style="list-style-type: none"> <li>Section line</li> </ul>   |

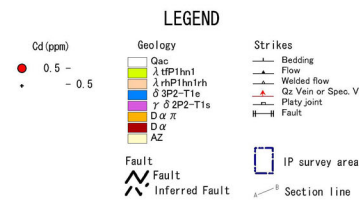
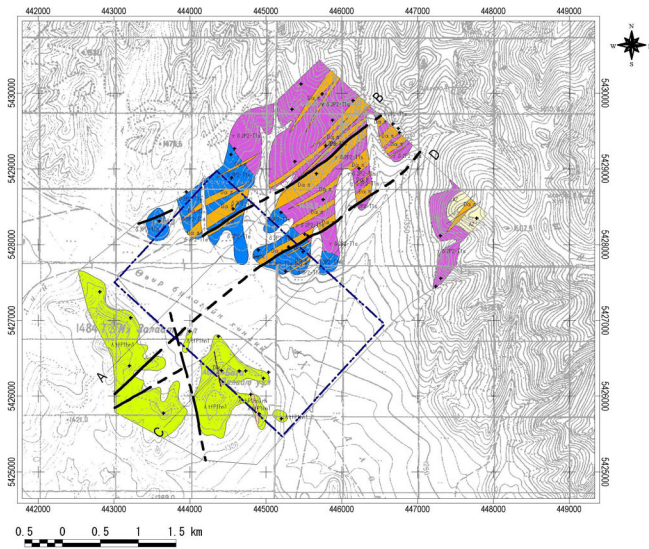
Erdenet SE area



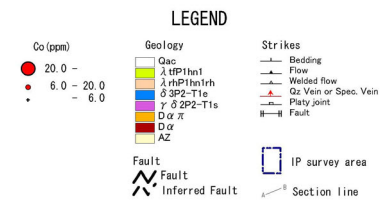
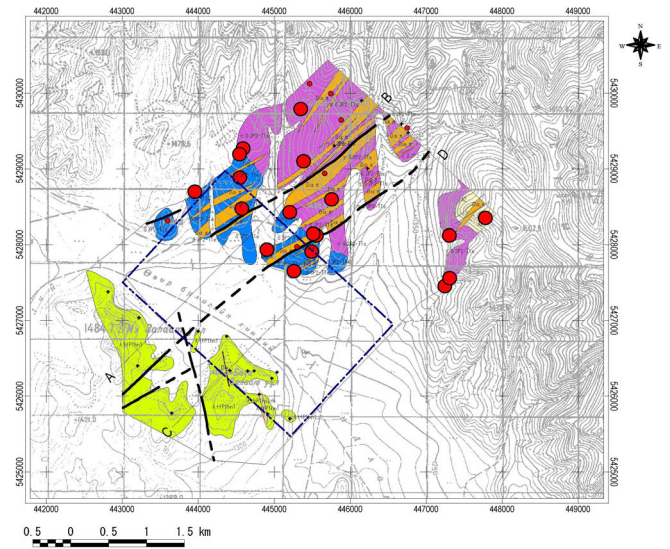
Erdenet SE area



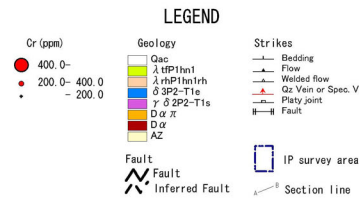
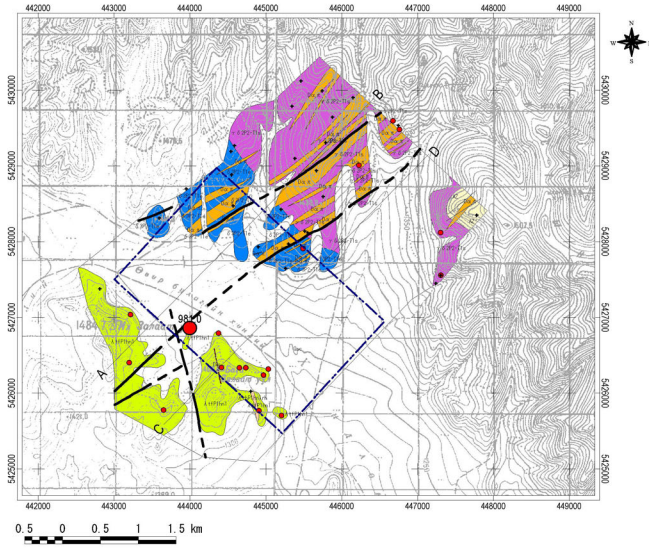
Erdenet SE area



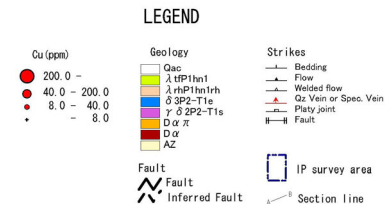
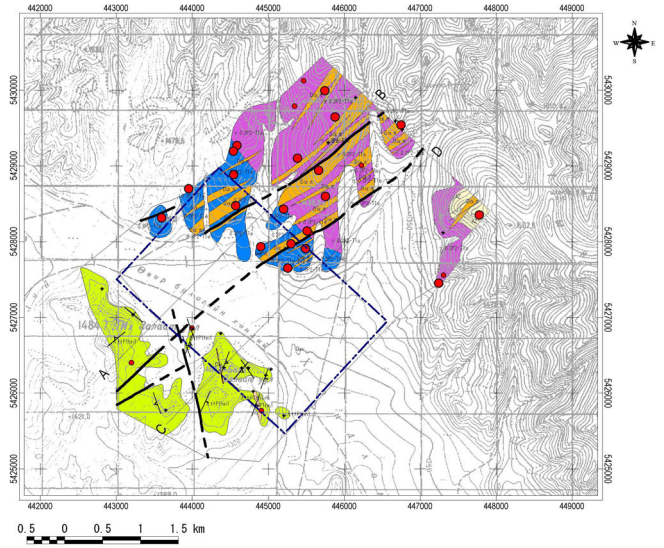
Erdenet SE area



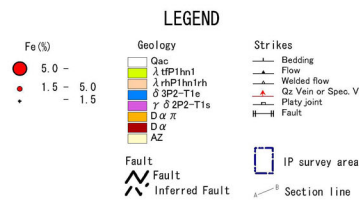
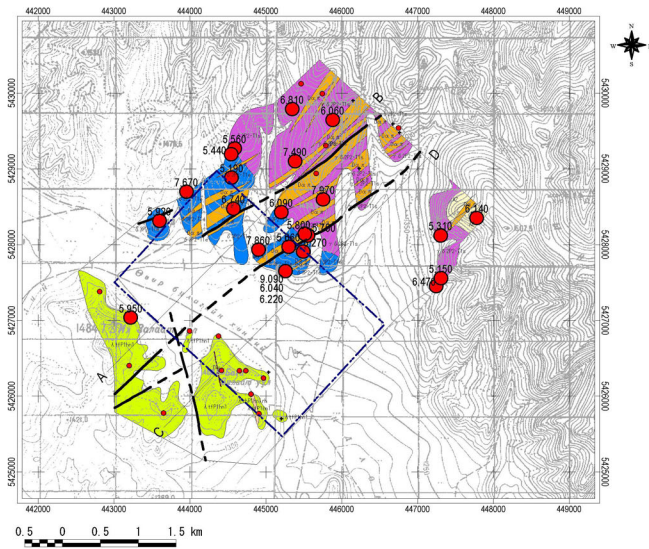
Erdenet SE area



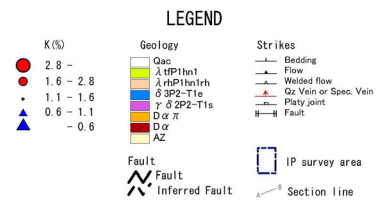
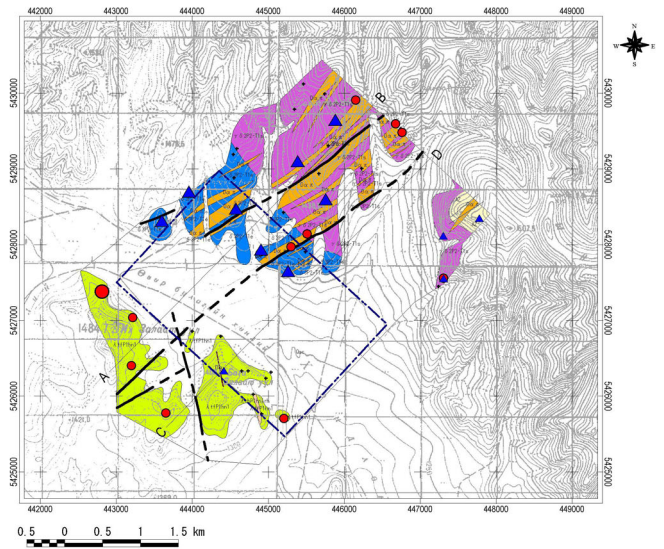
Erdenet SE area



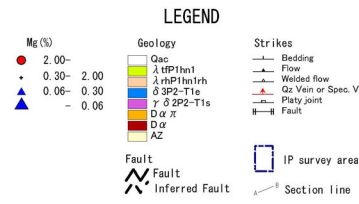
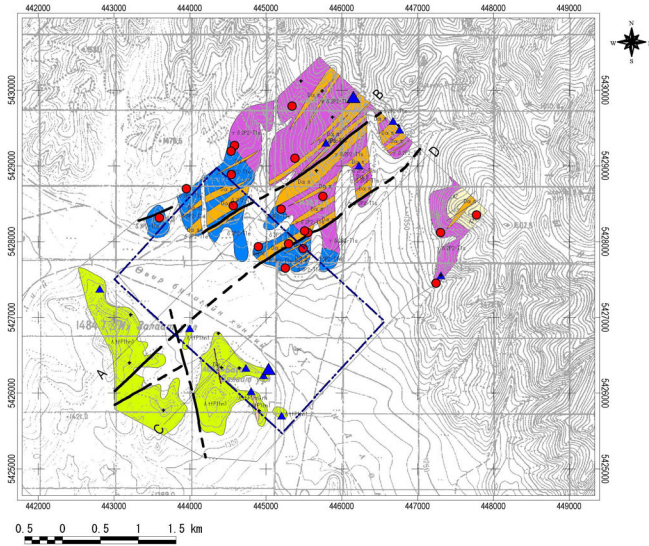
Erdenet SE area



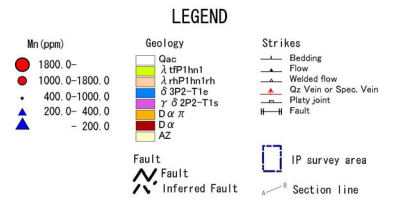
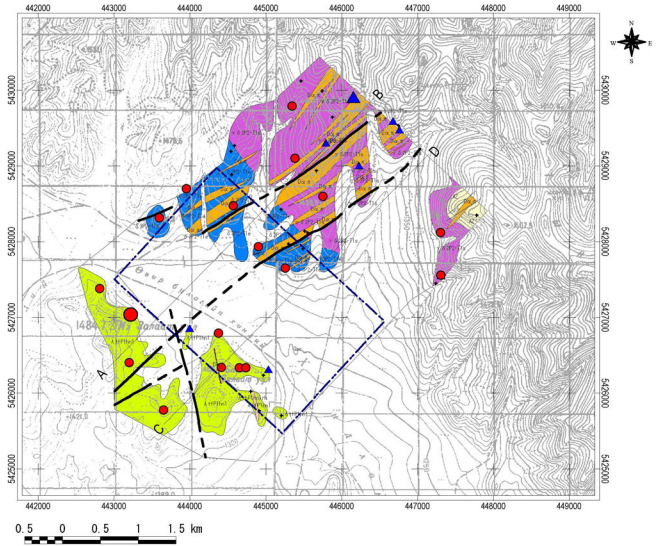
Erdenet SE area



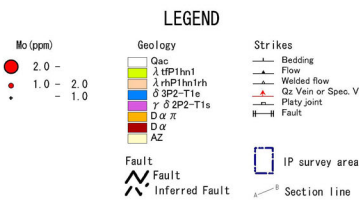
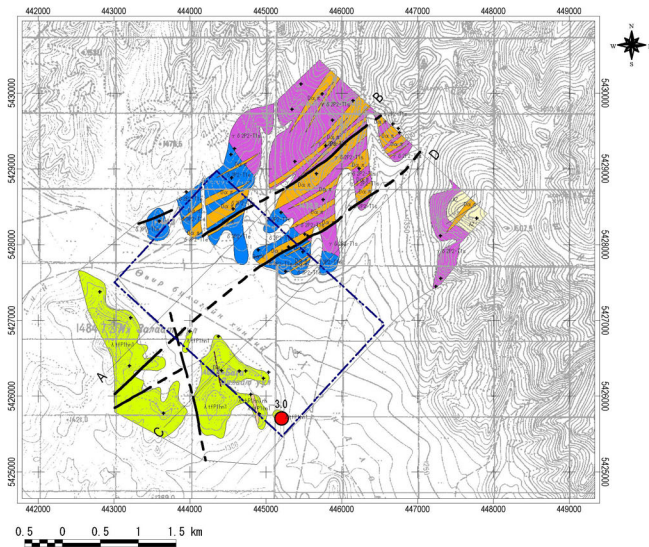
Erdenet SE area



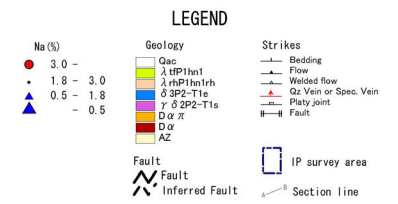
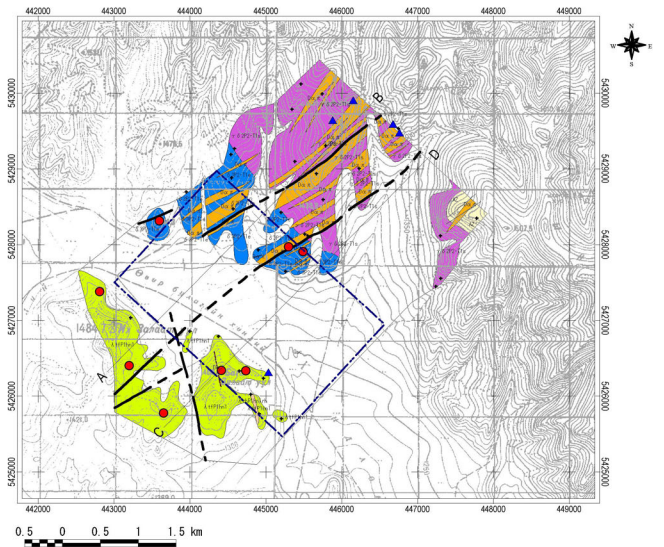
Erdenet SE area



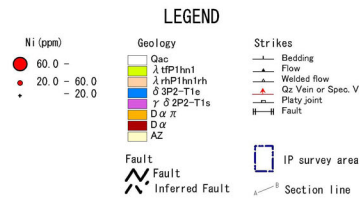
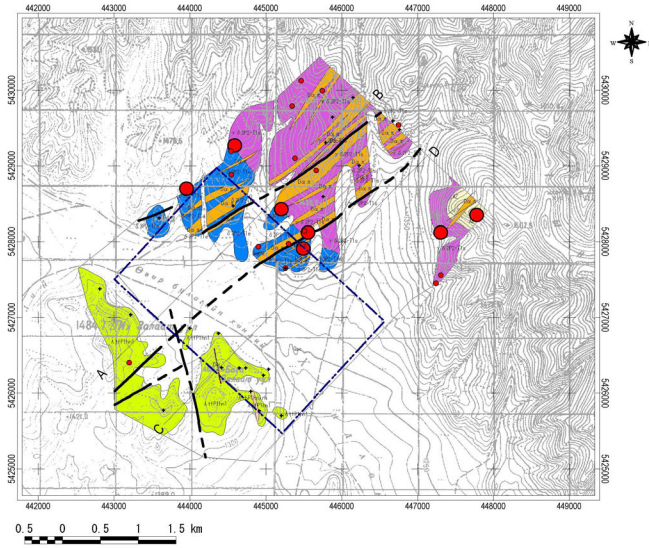
Erdenet SE area



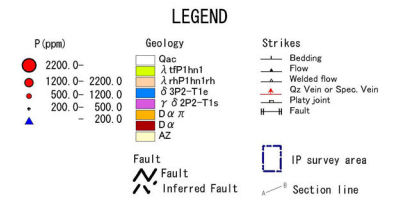
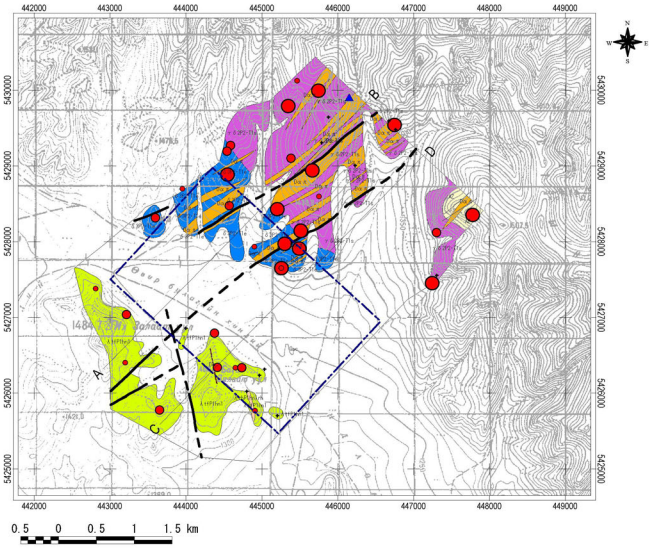
Erdenet SE area



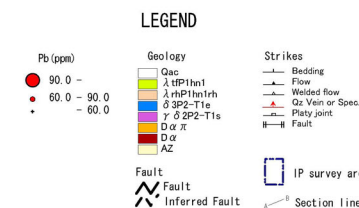
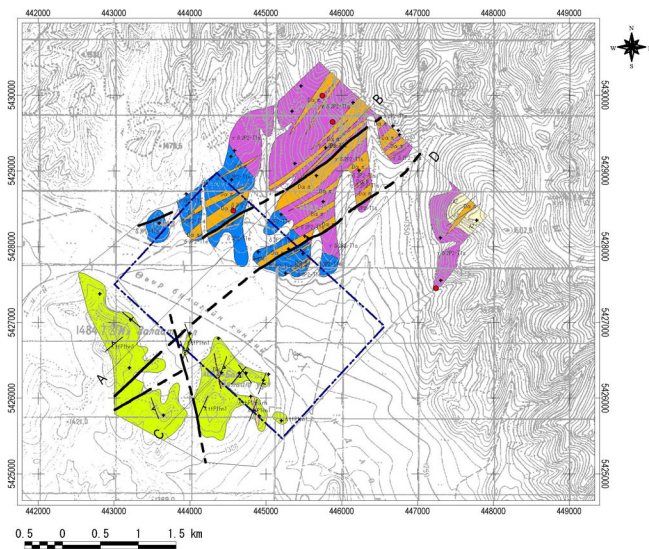
Erdenet SE area



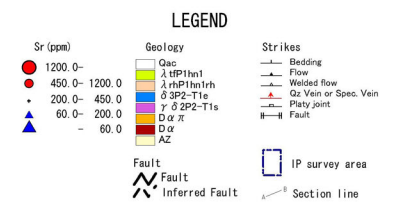
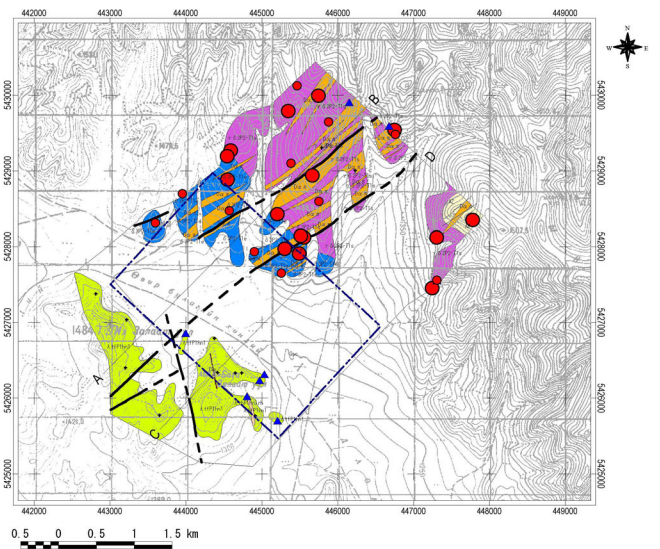
Erdenet SE area



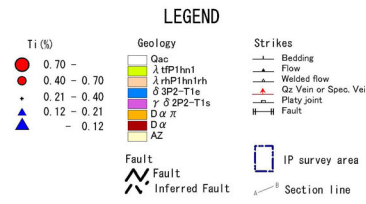
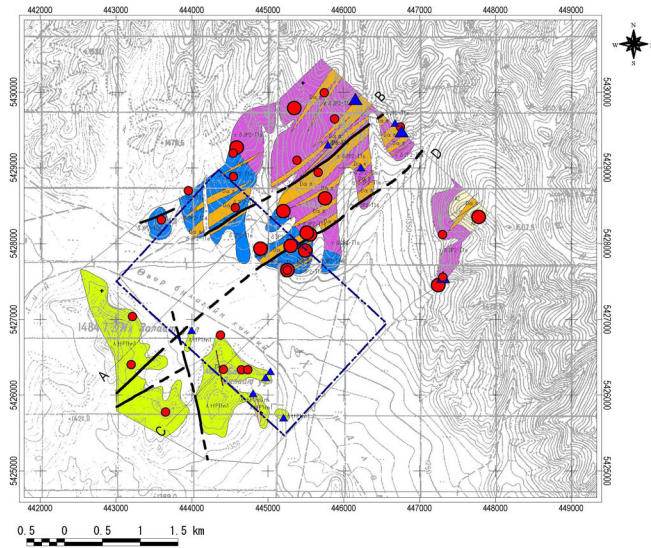
Erdenet SE area



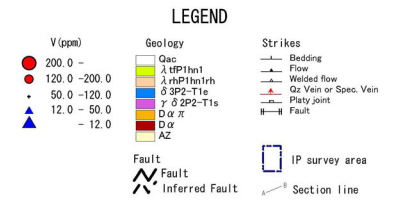
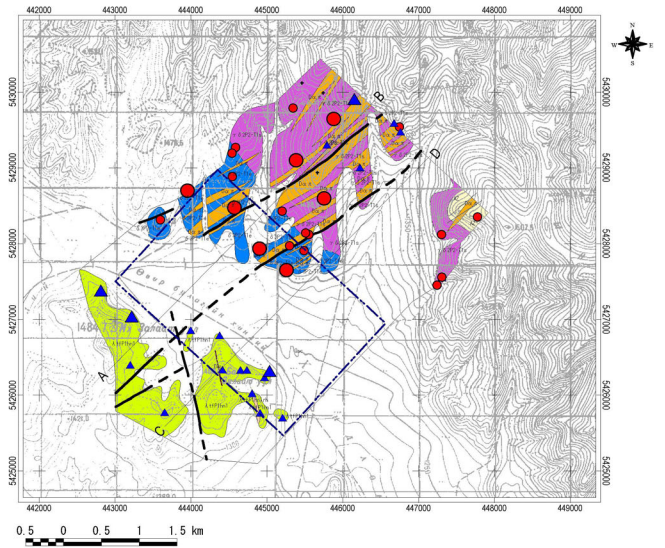
Erdenet SE area



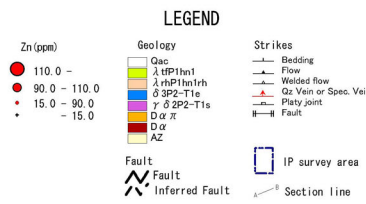
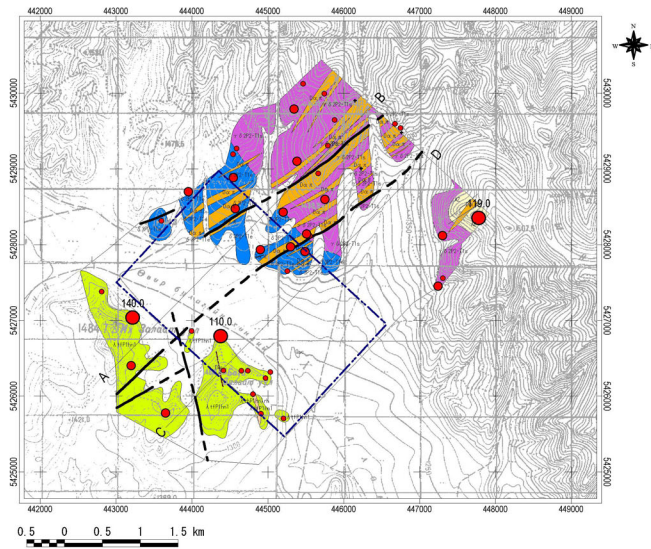
Erdenet SE area



Erdenet SE area

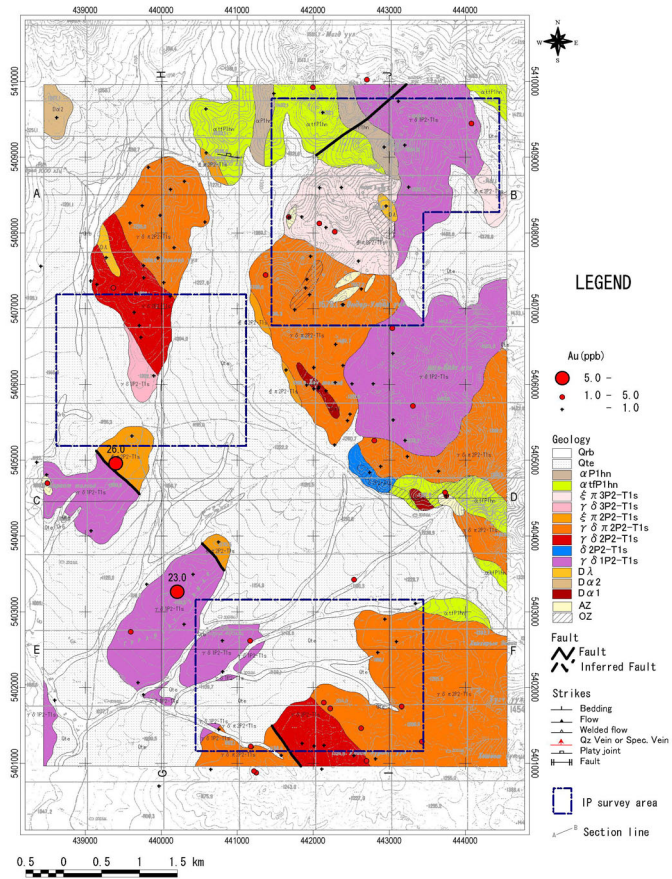


Erdenet SE area

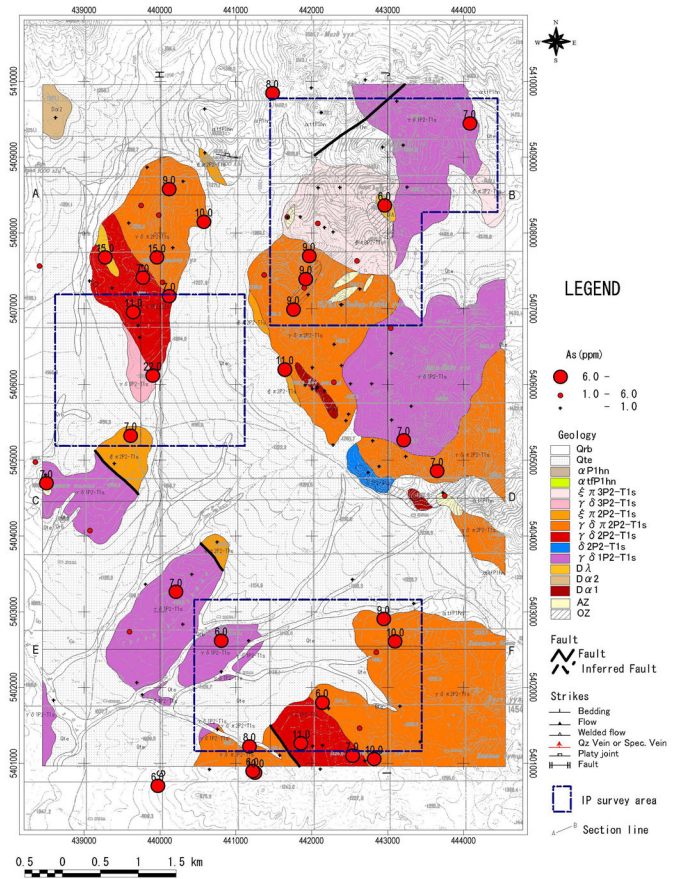


Erdenet SE area

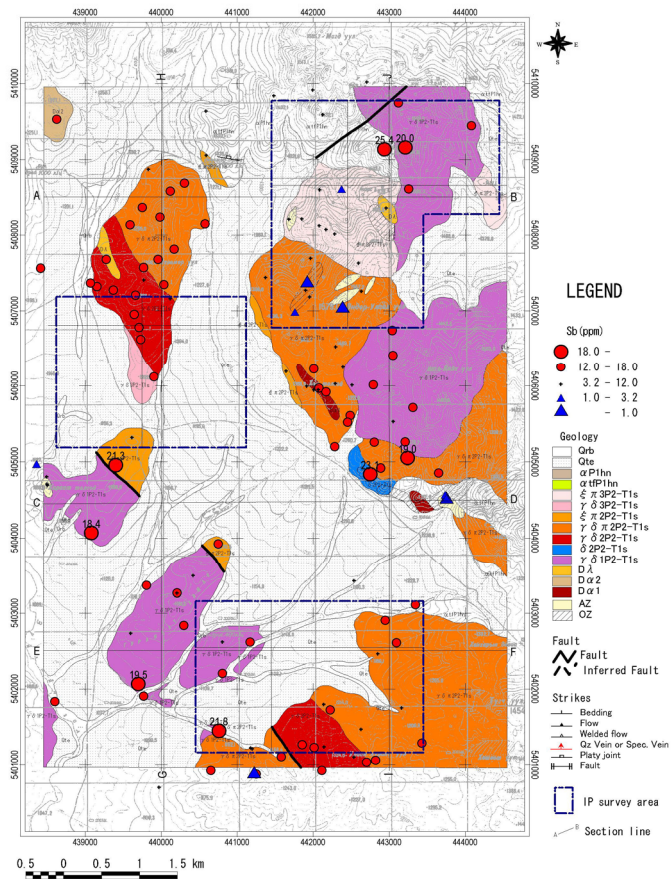




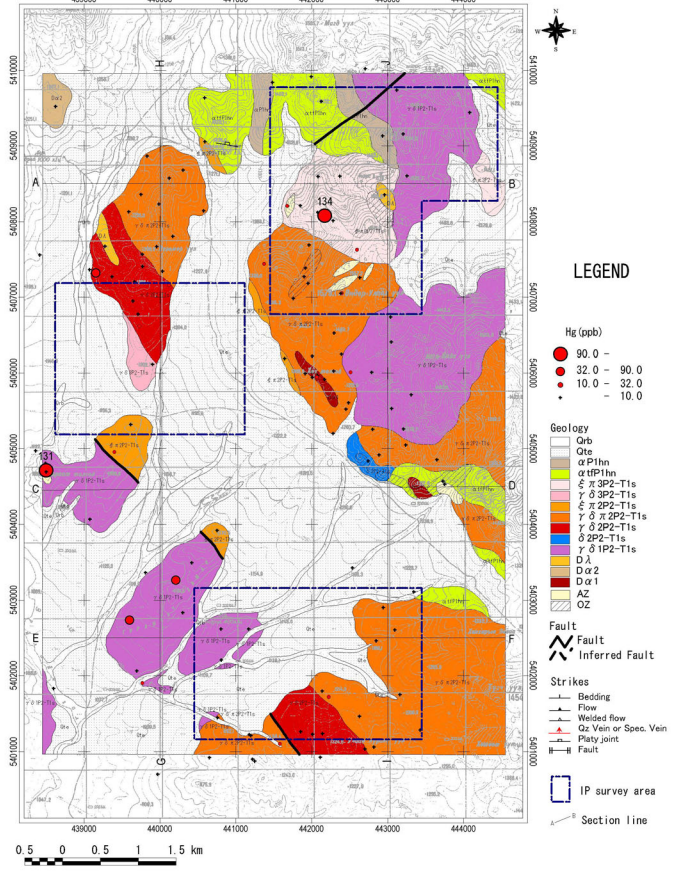
Under/Shand area



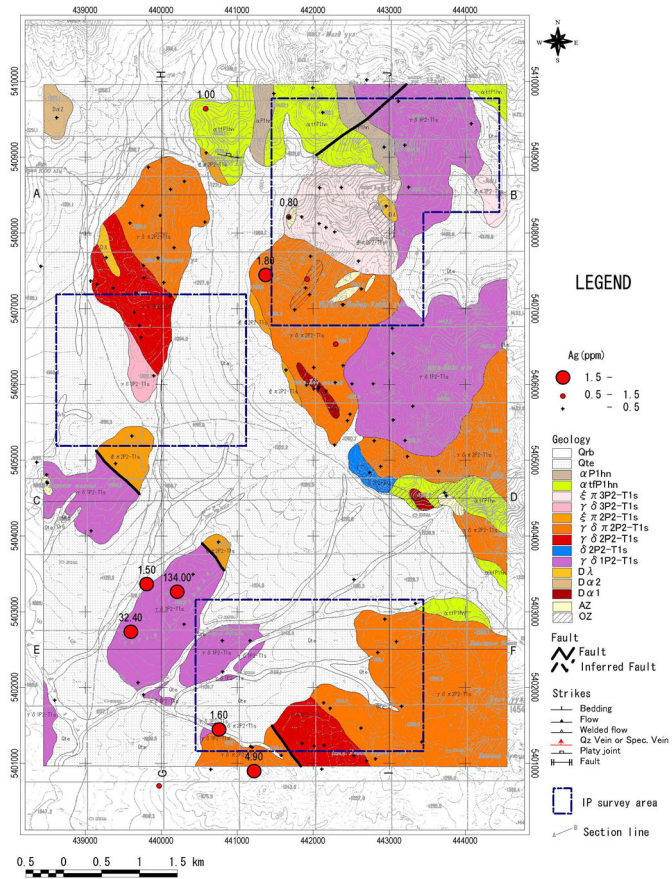
Under/Shand area



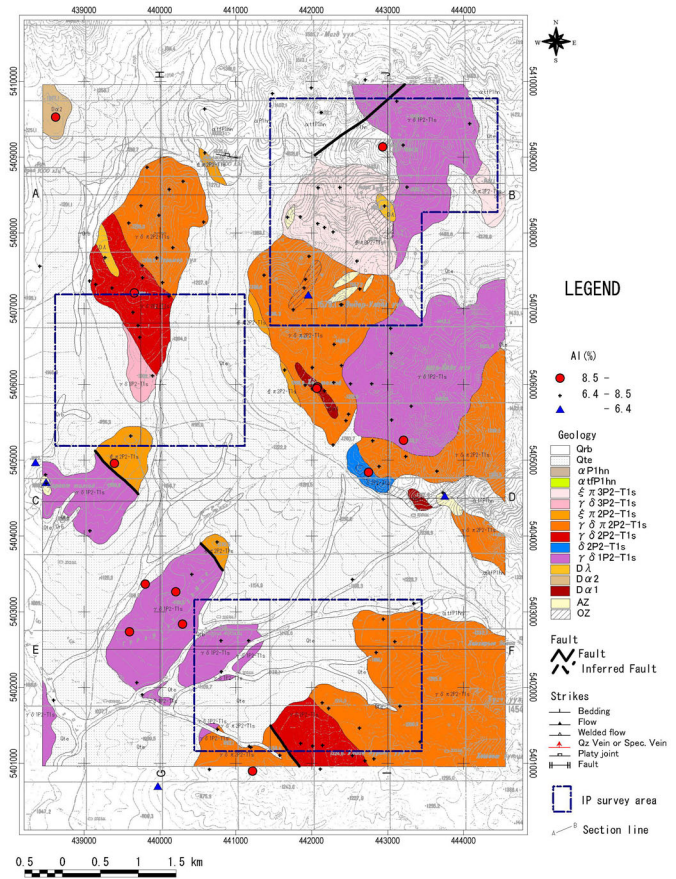
Under/Shand area



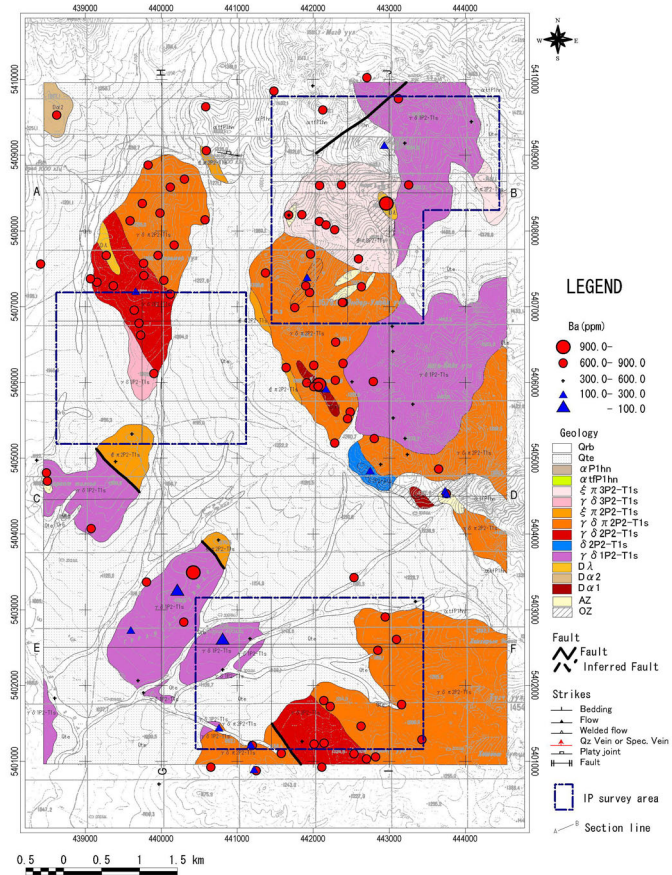
Under/Shand area



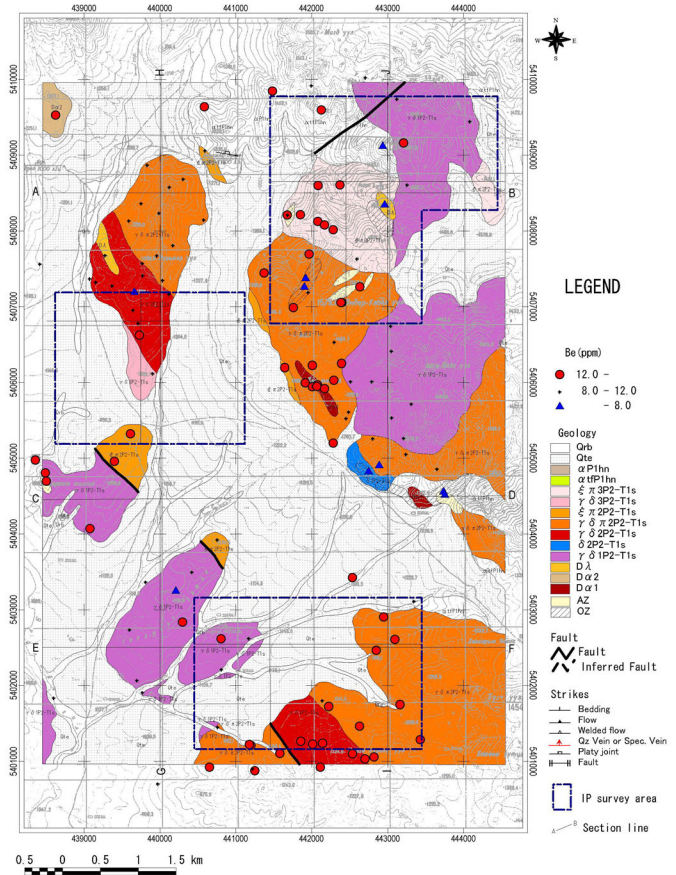
Under/Shand area



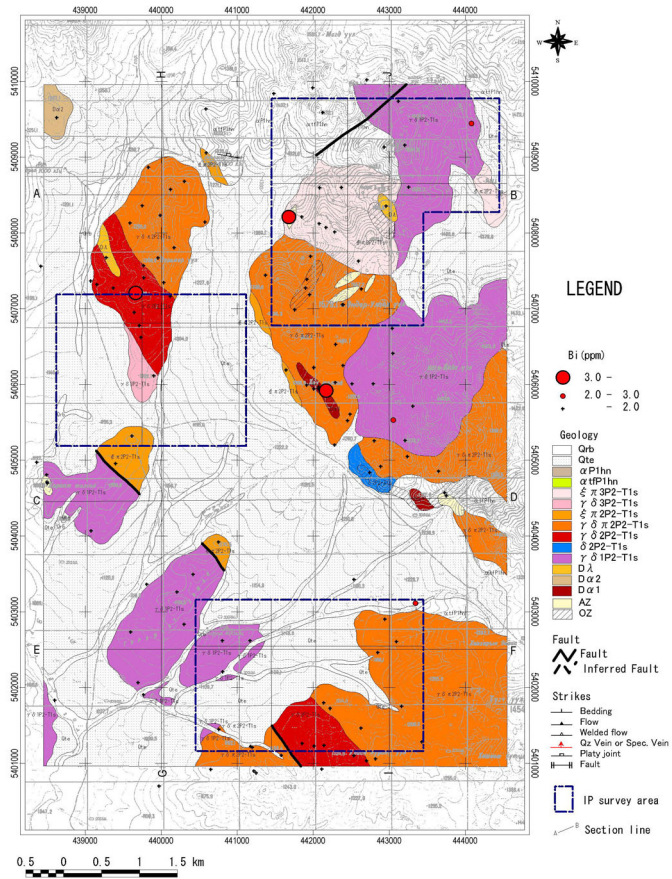
Under/Shand area



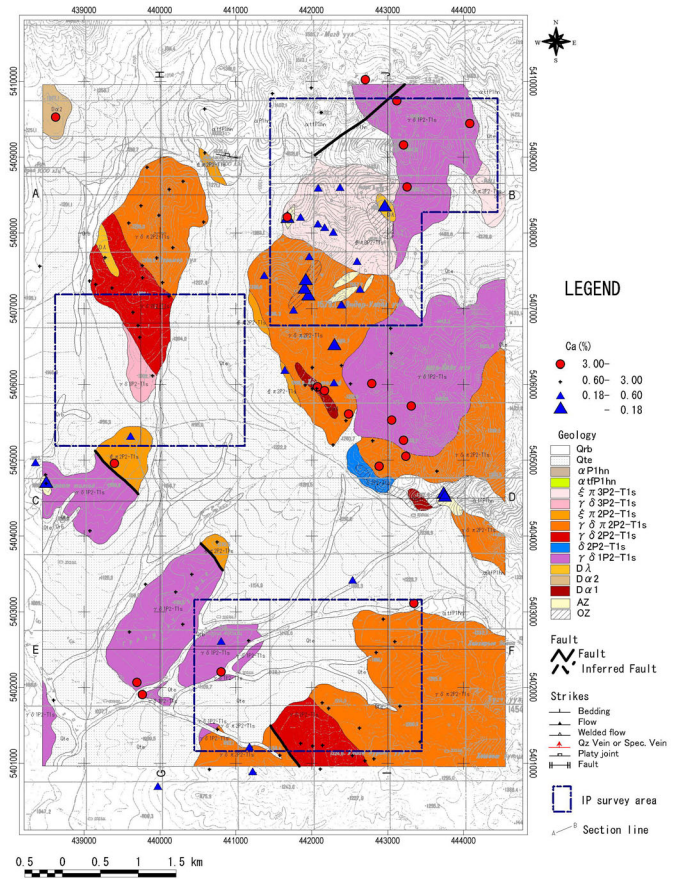
Under/Shand area



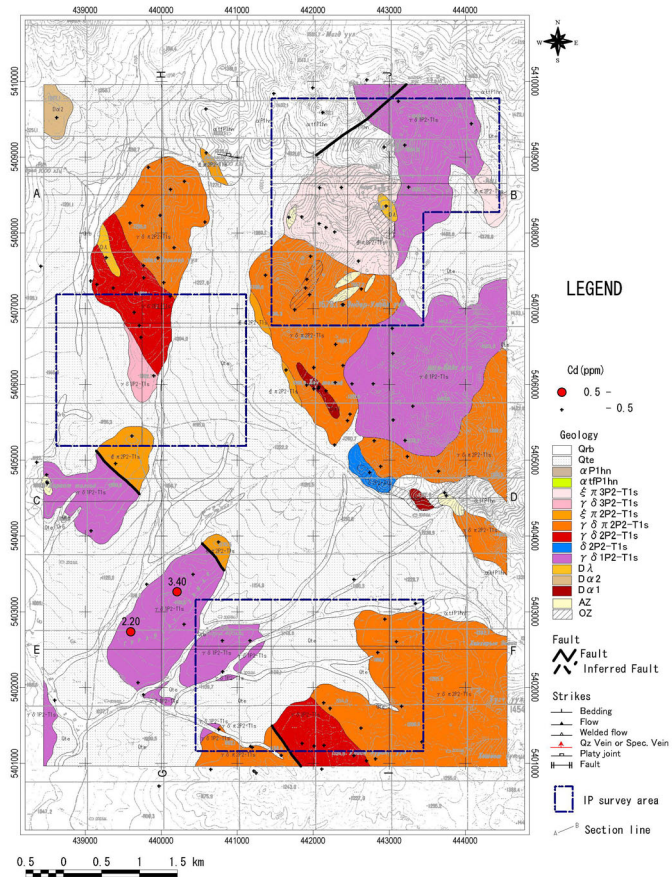
Under/Shand area



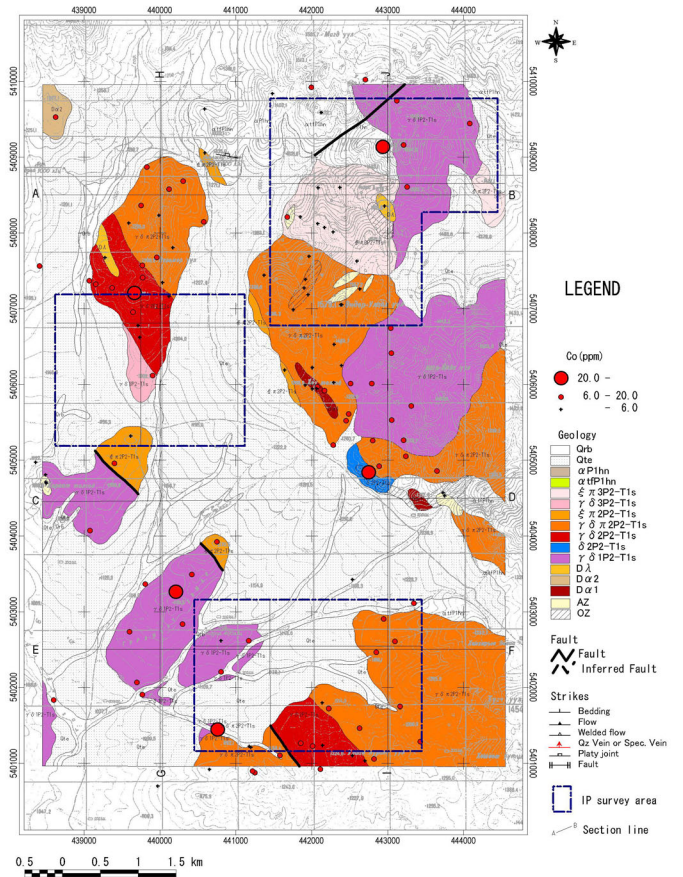
Under/Shand area



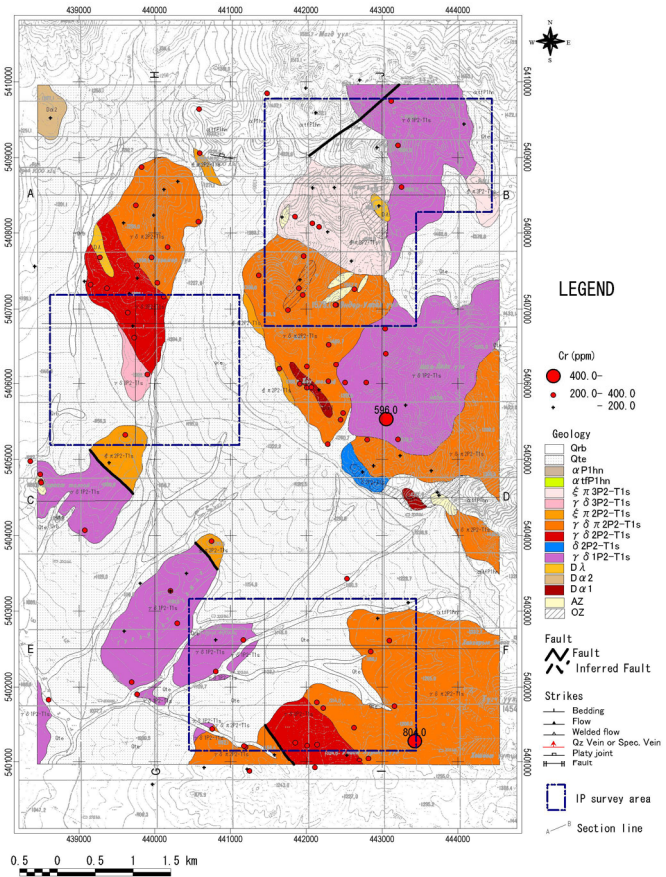
Under/Shand area



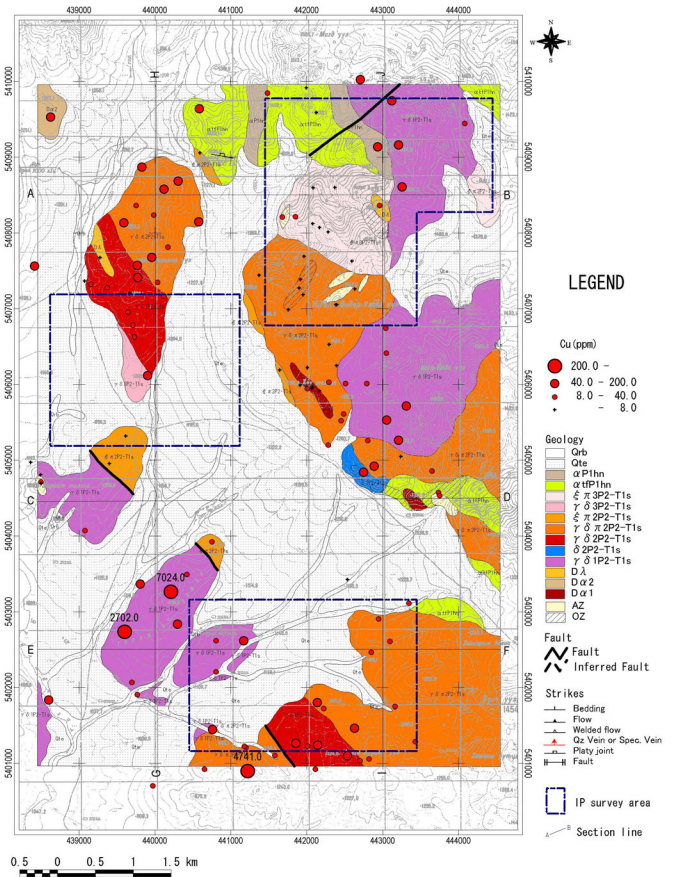
Under/Shand area



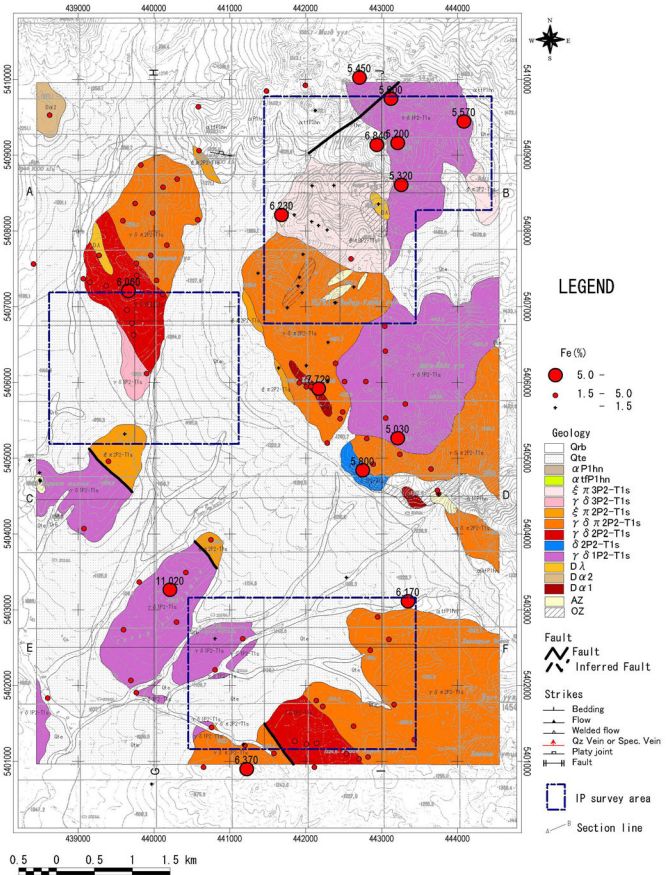
Under/Shand area



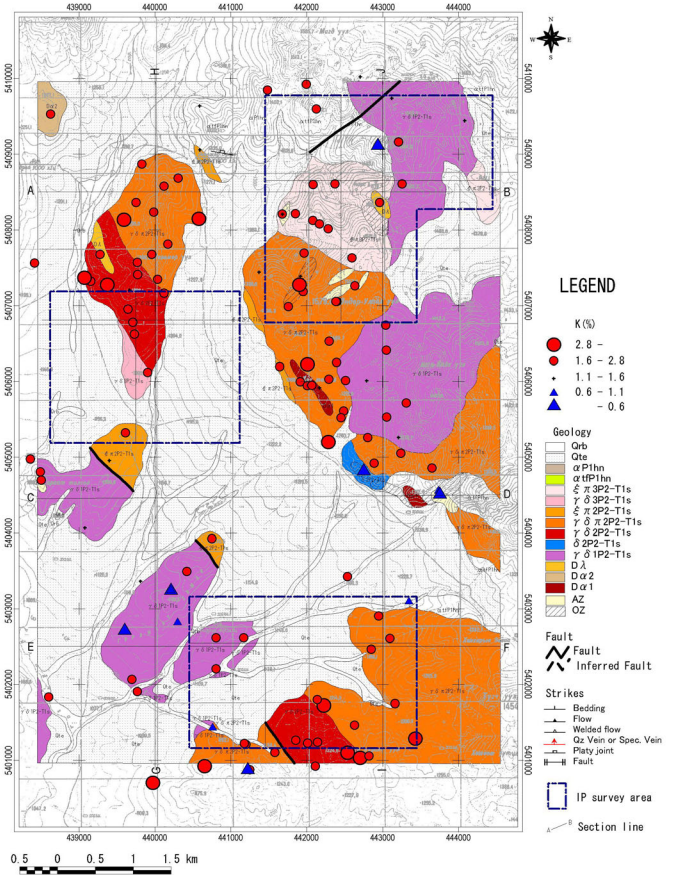
Under/Shand area



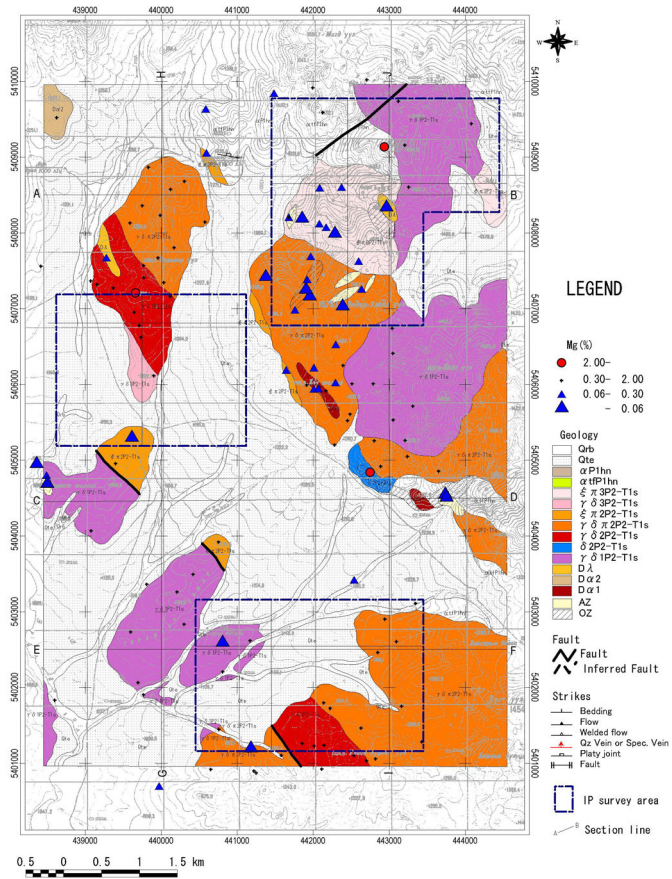
Under/Shand area



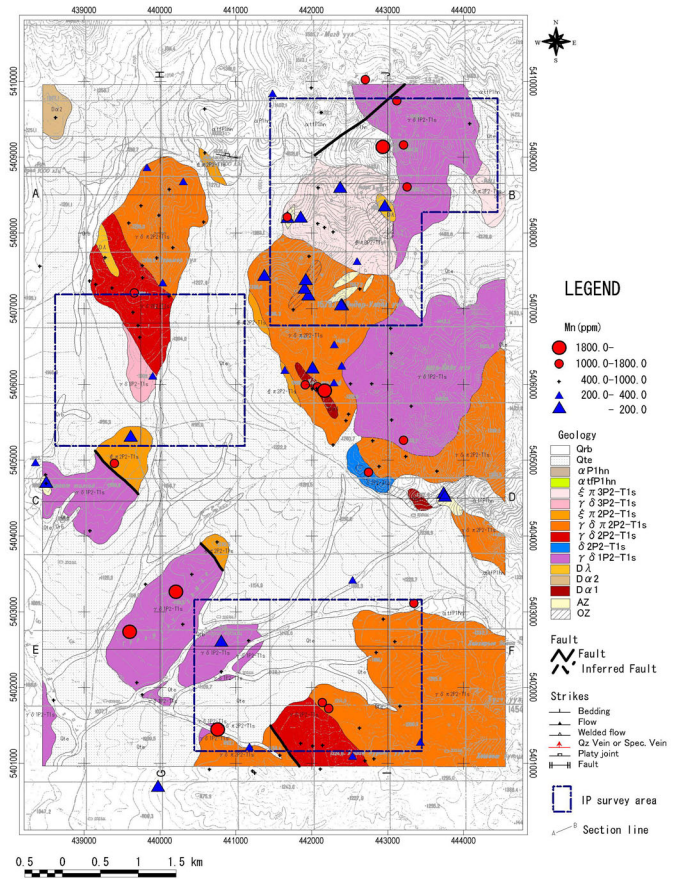
Under/Shand area



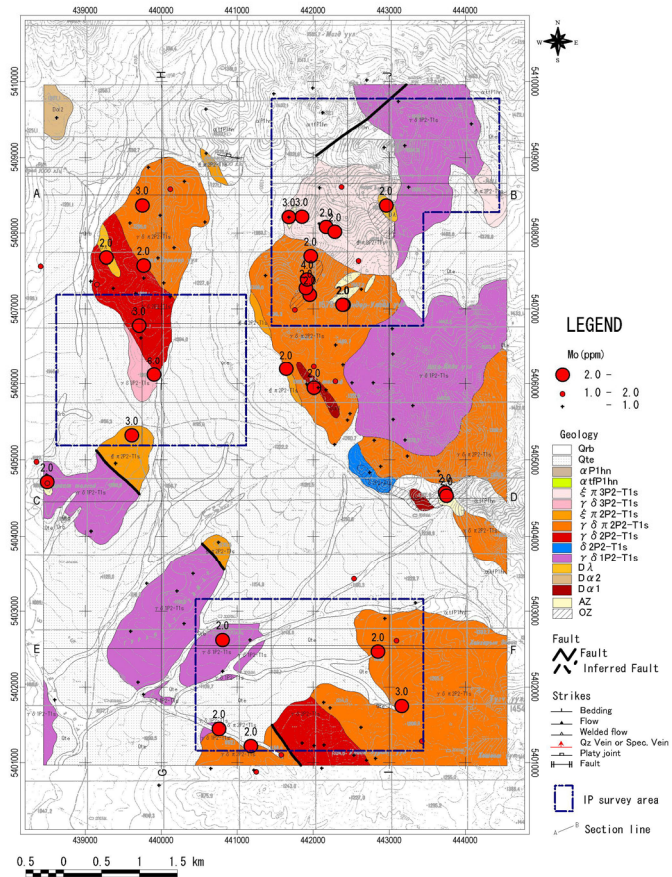
Under/Shand area



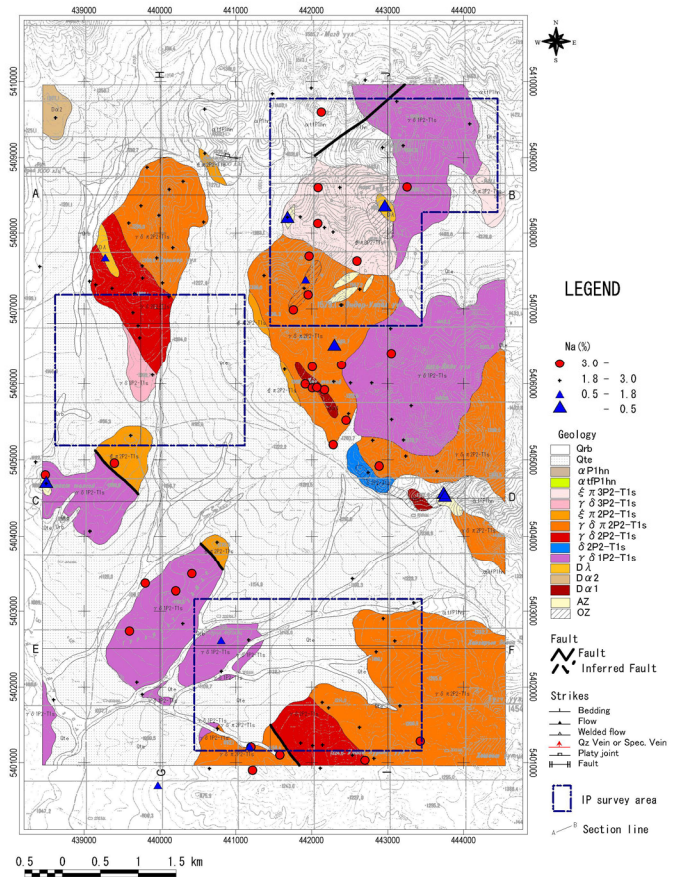
Under/Shand area



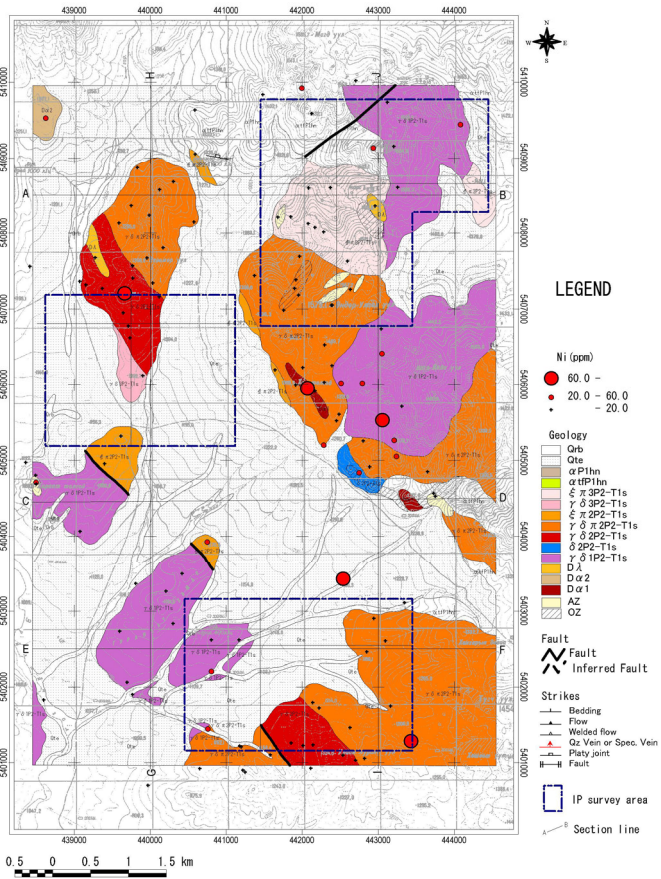
Under/Shand area



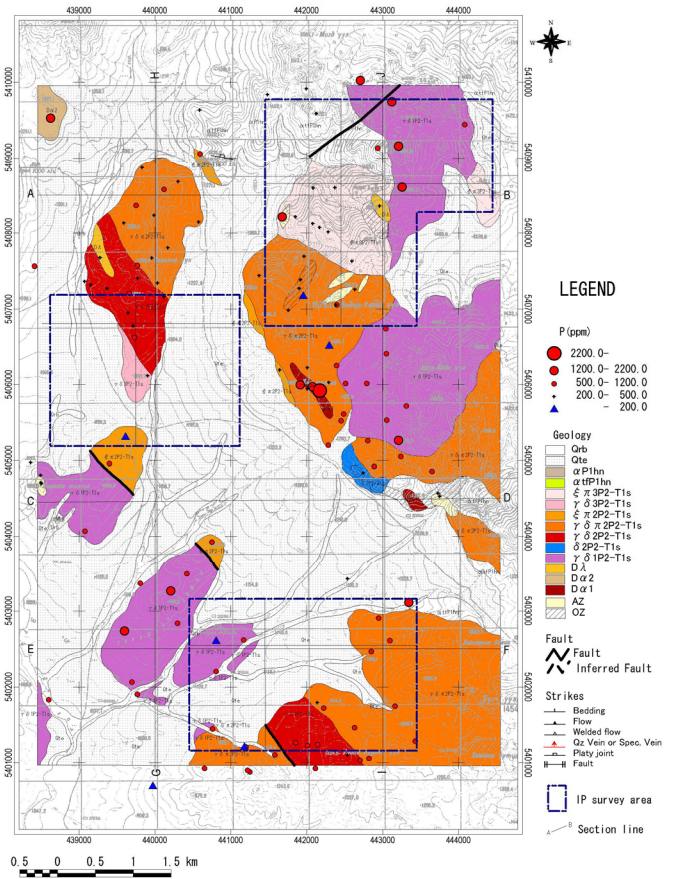
Under/Shand area



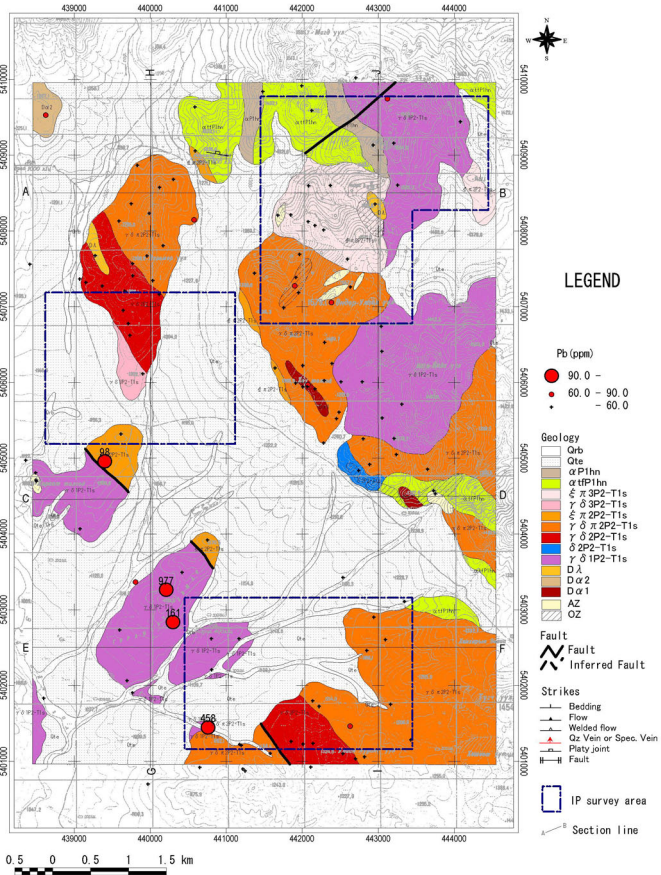
Under/Shand area



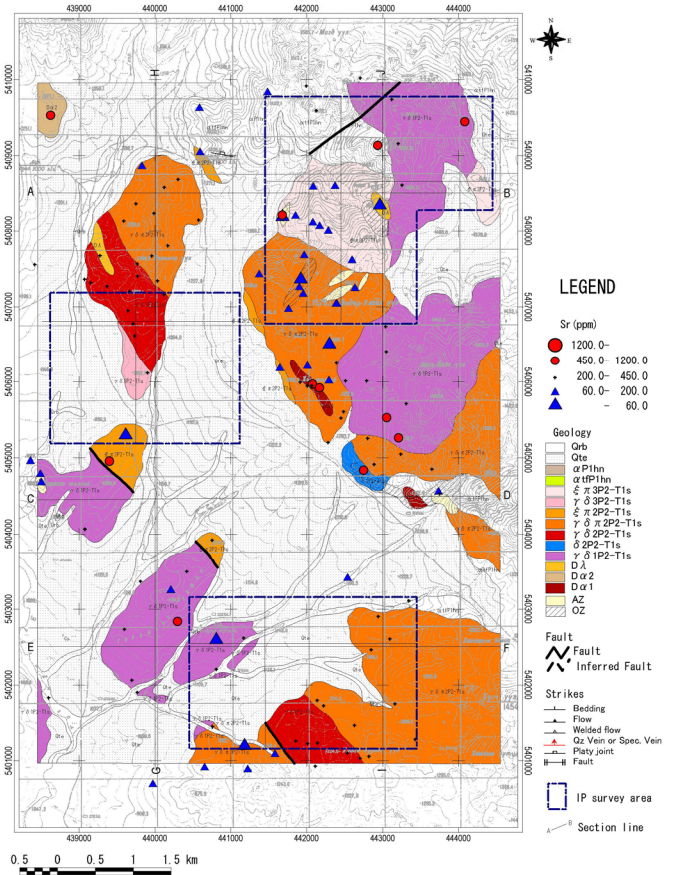
Under/Shand area



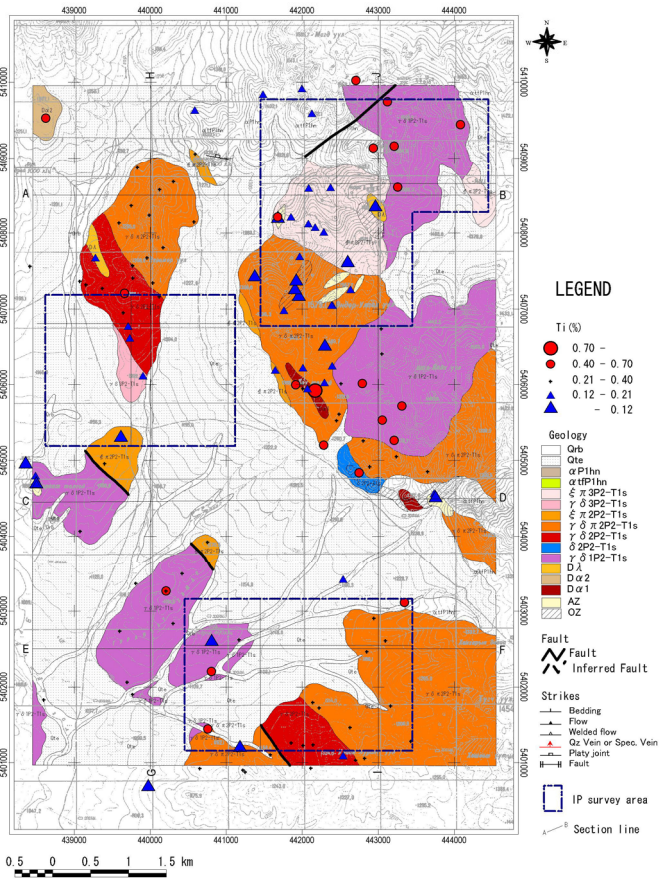
Under/Shand area



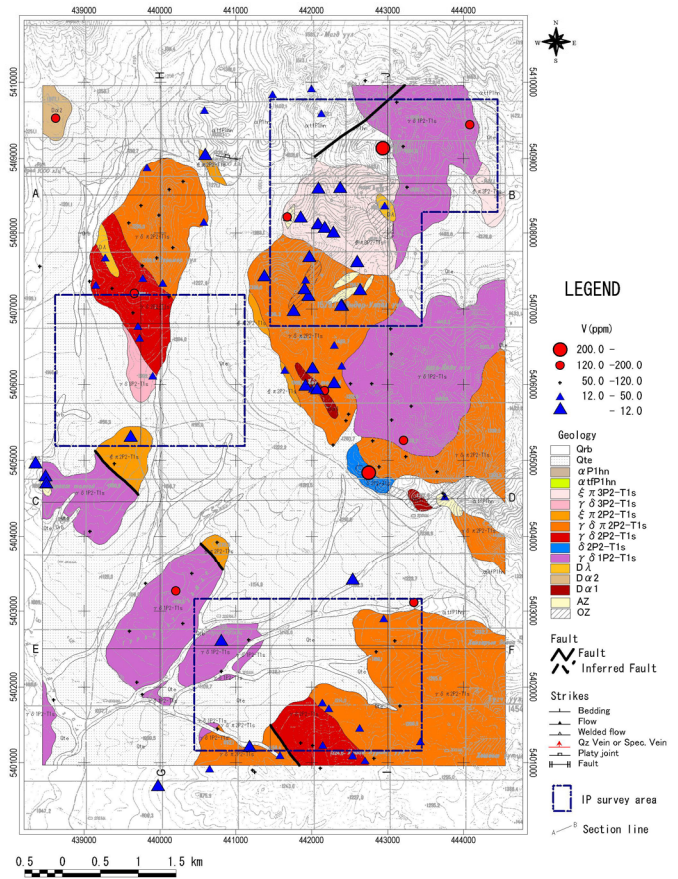
Under/Shand area



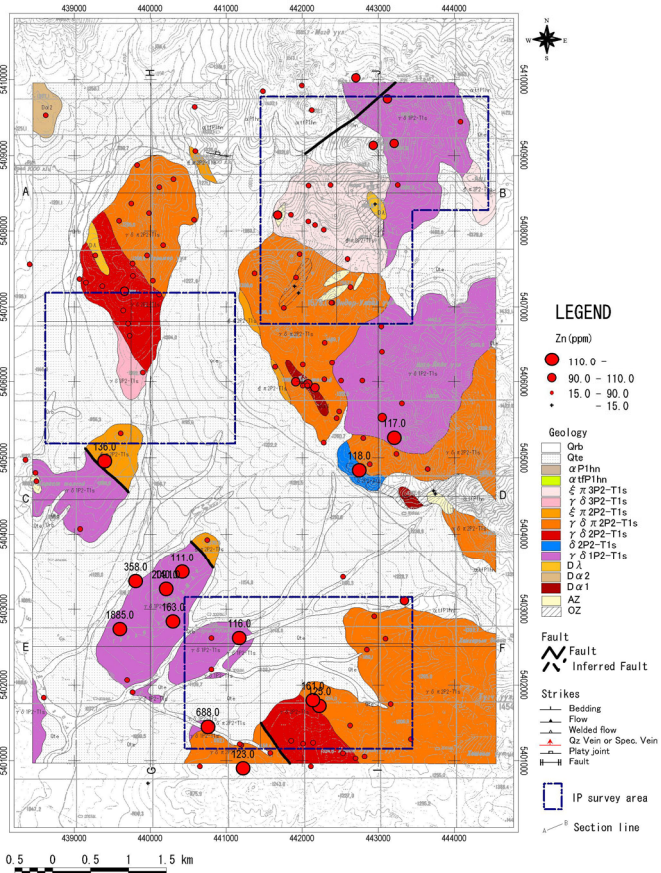
Under/Shand area



Under/Shand area



Under/Shand area



Under/Shand area