

RECORD OF WATER PRESSURE TEST

Project	WRDMM	Bore Hole No.	BH TD-2	Date	10/1/2002
Depth (m)	( 35.00 - 40.00 )	Test Length (m)	5.00	Hole Radius (cm)	3.50
G.W.L. before day's work (m)	11.00	Pressure gauge height (m) : C/100	0.50		
G.W.L. before testing (m) : B/100	5.40	Packer NQ size (cm)	7.00		
Length (m) and Diameter (cm) of Rod	37.00 m	2.54 cm (φ)			
Length (m) and Diameter (cm) of Hose	8.00 m	2.54 cm (φ)			

Pressure gauge Reading : A/1000 (kgf/cm <sup>2</sup> )	Water Injection (l/min)					Average of Water Injection : q (l/min)	Water Injection for 1 m : Q (l/min/m)	Water Pressure in Head (cm)			Effective Pressure : P (kgf/cm <sup>2</sup> )
	1	2	3	4	5			H	A+B+C	Hf	
1.0	1	2	2	1	2	1.63	0.33	1590	1590	0	1.59
4.0	6	7	7	6	7	6.63	1.33	4520	4590	70	4.52
7.0	11	12	12	11	12	11.63	2.33	7490	7590	100	7.49
10.0	19	20	20	19	20	19.63	3.93	10440	10590	150	10.44
7.0	15	16	16	15	16	15.63	3.13	7470	7590	120	7.47
4.0	10	11	11	10	11	10.63	2.13	4500	4590	90	4.50
1.0	2	3	3	2	3	2.63	0.53	1590	1590	0	1.59

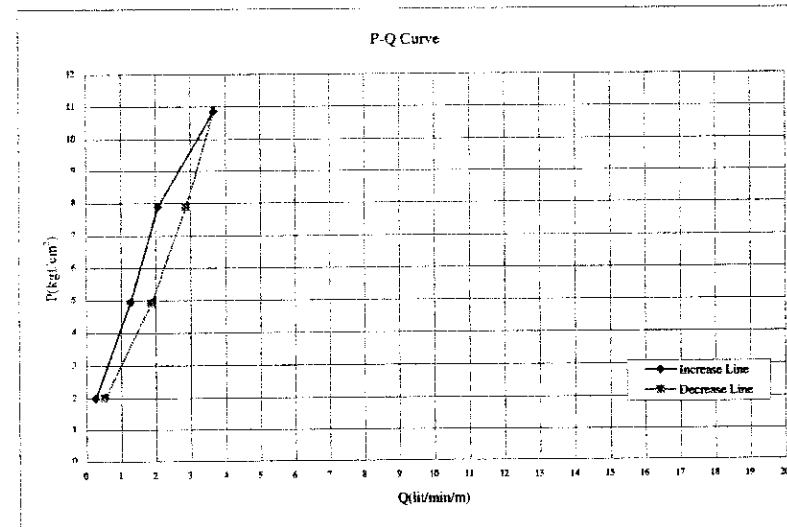
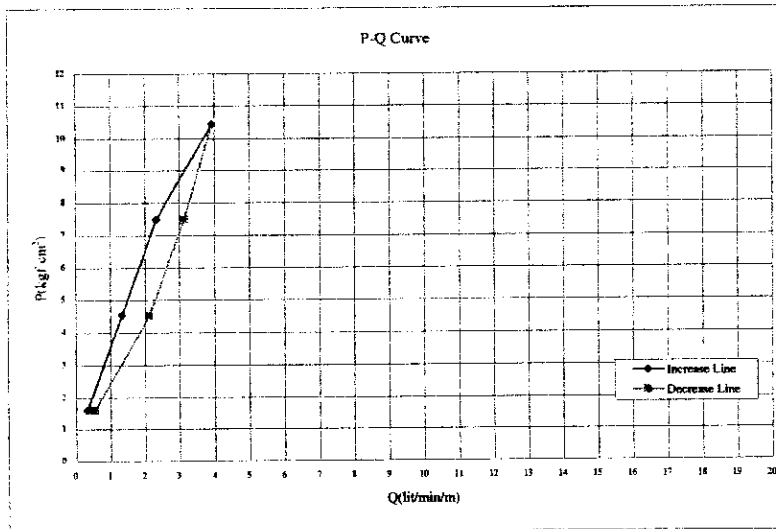
Lu= - Pc= 7.50  
Ld= 3.1

Project	WRDMM	Bore Hole No.	BH TD-2	Date	10/1/2002
Depth (m)	( 40.00 - 45.00 )	Test Length (m)	5.00	Hole Radius (cm)	3.50
G.W.L. before day's work (m)	11.10	Pressure gauge height (m) : C/100	0.50		
G.W.L. before testing (m) : B/100	9.50	Packer NQ size (cm)	7.00		
Length (m) and Diameter (cm) of Rod	42.00 m	2.54 cm (φ)			
Length (m) and Diameter (cm) of Hose	8.00 m	2.54 cm (φ)			

Pressure gauge Reading : A/1000 (kgf/cm <sup>2</sup> )	Water Injection (l/min)					Average of Water Injection : q (l/min)	Water Injection for 1 m : Q (l/min/m)	Water Pressure in Head (cm)			Effective Pressure : P (kgf/cm <sup>2</sup> )
	1	2	3	4	5			H	A+B+C	Hf	
1.0	2	1	1	2	1	1.38	0.28	2000	2000	0	2.00
4.0	7	6	6	7	6	6.38	1.28	4940	5000	60	4.94
7.0	11	10	10	11	10	10.38	2.08	7900	8000	100	7.90
10.0	19	18	18	19	18	18.38	3.68	10850	11000	150	10.85
7.0	15	14	14	15	14	14.38	2.88	7880	8000	120	7.88
4.0	10	9	9	10	9	9.38	1.88	4910	5000	90	4.91
1.0	2	3	3	2	3	2.63	0.53	2000	2000	0	2.00

Lu= - Pc= 8.70  
Ld= 3.0



G2-64

RECORD OF WATER PRESSURE TEST

BH TD-2 10/2/2002

Project	WRDMM	Bore Hole No.	BH TD-2	Date	10/2/2002
Depth (m)	( 50.00 - 50.00 )	Test Length (m)	5.00	Hole Radius (cm)	3.50
G.W.L. before day's work (m)	10.60	Pressure gauge height (m) : C/100	0.50		
G.W.L. before testing (m) : B/100	8.50	Packer NQ size (cm)	7.00		
Length (m) and Diameter (cm) of Rod	47.00 m	2.54 cm (φ)			
Length (m) and Diameter (cm) of Hose	8.00 m	2.54 cm (φ)			

Pressure gauge Reading : A/1000 (kgf/cm <sup>2</sup> )	Water Injection (l/min)					Average of Water Injection : q (l/min)	Water Injection for 1 m : Q (l/min/m)	Water Pressure in Head (cm)			Effective Pressure : P (kgf/cm <sup>2</sup> )
	1	2	3	4	5			H	A+B+C	Hf	
1.0	1	1	0	1	0	0.63	0.13	1900	1900	0	1.90
	1	0	1	0	1						
4.0	8	9	8	9	8	8.50	1.70	4820	4900	80	4.82
	9	9	8	9	8						
7.0	11	12	11	11	12	11.38	2.28	7800	7900	100	7.80
	11	11	12	12	11						
10.0	19	18	18	19	18	18.50	3.70	10750	10900	150	10.75
	19	18	18	19	18						
7.0	15	14	15	14	14	14.50	2.90	7780	7900	120	7.78
	15	14	15	14	14						
4.0	10	10	9	10	9	9.63	1.93	4810	4900	90	4.81
	10	10	9	10	9						
1.0	2	4	3	2	3	2.88	0.58	1900	1900	0	1.90
	4	2	3	4	2						

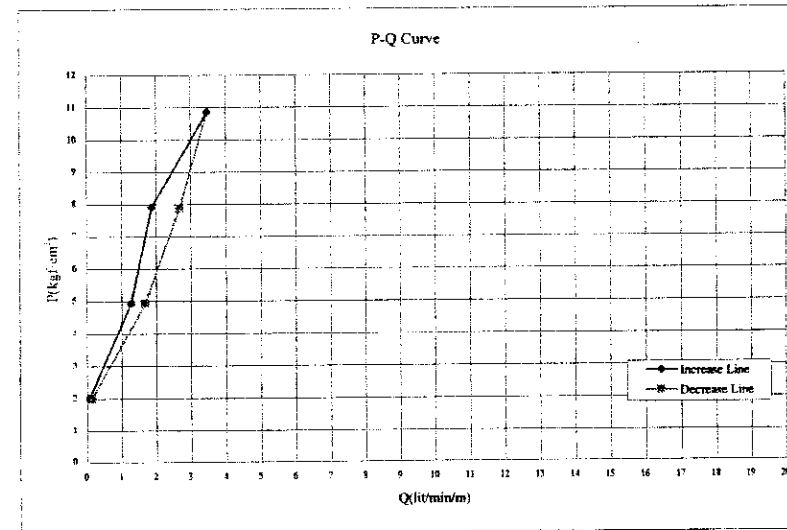
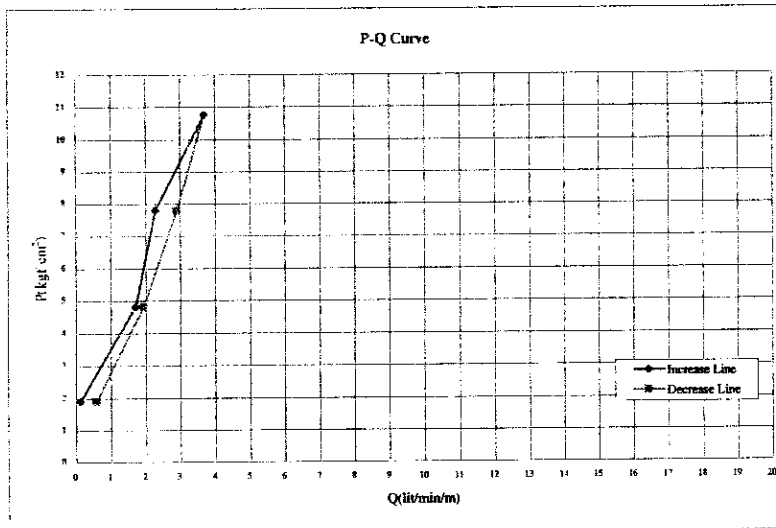
L <sub>1</sub> =	-	P <sub>c</sub> =	-
L <sub>2</sub> =	4.5		

BH TD-2 10/3/2002

Project	WRDMM	Bore Hole No.	BH TD-2	Date	10/3/2002
Depth (m)	( 50.00 - 55.00 )	Test Length (m)	5.00	Hole Radius (cm)	3.50
G.W.L. before day's work (m)	10.70	Pressure gauge height (m) : C/100	0.50		
G.W.L. before testing (m) : B/100	9.50	Packer NQ size (cm)	7.00		
Length (m) and Diameter (cm) of Rod	52.00 m	2.54 cm (φ)			
Length (m) and Diameter (cm) of Hose	8.00 m	2.54 cm (φ)			

Pressure gauge Reading : A/1000 (kgf/cm <sup>2</sup> )	Water Injection (l/min)					Average of Water Injection : q (l/min)	Water Injection for 1 m : Q (l/min/m)	Water Pressure in Head (cm)			Effective Pressure : P (kgf/cm <sup>2</sup> )
	1	2	3	4	5			H	A+B+C	Hf	
1.0	1	0	0	1	0	0.38	0.08	2000	2000	0	2.00
	0	1	0	1	0						
4.0	7	6	6	7	6	6.28	1.28	4920	5000	80	4.92
	6	7	5	6	7						
7.0	10	9	8	10	9	9.38	1.88	7910	8000	90	7.91
	9	10	9	9	10						
10.0	18	17	17	18	17	17.38	3.48	10850	11000	150	10.85
	17	18	17	17	18						
7.0	14	13	13	14	13	13.38	2.68	7870	8000	130	7.87
	13	14	13	13	14						
4.0	9	8	8	9	8	8.38	1.68	4920	5000	80	4.92
	8	9	8	8	9						
1.0	1	1	0	1	1	0.75	0.15	2000	2000	0	2.00
	0	1	1	0	1						

L <sub>1</sub> =	-	P <sub>c</sub> =	-
L <sub>2</sub> =	3.3		



G2-65

RECORD OF WATER PRESSURE TEST

BH TD-2, 10/3/02

Project	WRDMM	Bore Hole No.	BH TD-2	Date	10/3/2002
Depth (m)	( 55.00 - 60.00 )	Test Length (m)	5.00	Hole Radius (cm)	3.50
G.W.L. before day's work (m)	10.80	Pressure gauge height (m) : C/100	0.50		
G.W.L. before testing (m) : B/100	9.50	Packer NQ size (cm)	7.00		
Length (m) and Diameter (cm) of Rod	57.00 m	2.54 cm (φ)			
Length (m) and Diameter (cm) of Hose	8.00 m	2.54 cm (φ)			

Pressure gauge Reading : A/1000 (kgf/cm <sup>2</sup> )	Water Injection (l/min)					Average of Water Injection : q (l/min)	Water Injection for 1 m : Q (l/min/m)	Water Pressure in Head (cm)			Effective Pressure : P (kgf/cm <sup>2</sup> )
	1	2	3	4	5			H	A+B+C	Hf	
1.0	1	1	0	1	1	0.75	0.15	2000	2000	0	2.00
4.0	7	6	7	6	7	6.63	1.33	4920	5000	80	4.92
7.0	10	9	10	9	9	9.38	1.88	7900	8000	100	7.90
10.0	18	17	18	17	18	17.50	3.50	10820	11000	150	10.85
7.0	14	13	13	14	14	13.38	2.68	7880	8000	120	7.88
4.0	9	10	9	10	9	9.50	1.90	4910	5000	90	4.91
1.0	1	2	2	1	2	1.63	0.33	2000	2000	0	2.00

L <sub>up</sub>	3.1	P <sub>c</sub>	-
L <sub>u</sub>	-		

BH TD-2, 10/4/02

Project	WRDMM	Bore Hole No.	BH TD-2	Date	10/4/2002
Depth (m)	( 60.00 - 65.00 )	Test Length (m)	5.00	Hole Radius (cm)	3.50
G.W.L. before day's work (m)	10.60	Pressure gauge height (m) : C/100	0.50		
G.W.L. before testing (m) : B/100	9.60	Packer NQ size (cm)	7.00		
Length (m) and Diameter (cm) of Rod	62.00 m	2.54 cm (φ)			
Length (m) and Diameter (cm) of Hose	8.00 m	2.54 cm (φ)			

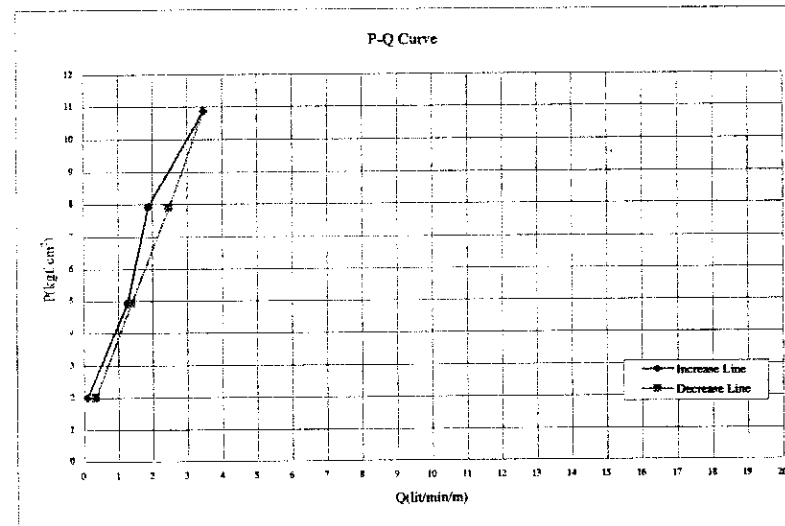
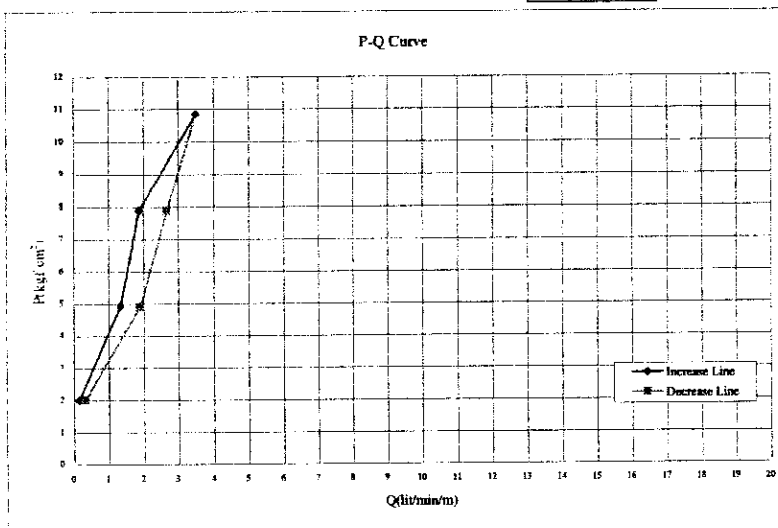
  

Pressure gauge Reading : A/1000 (kgf/cm <sup>2</sup> )	Water Injection (l/min)					Average of Water Injection : q (l/min)	Water Injection for 1 m : Q (l/min/m)	Water Pressure in Head (cm)			Effective Pressure : P (kgf/cm <sup>2</sup> )
	1	2	3	4	5			H	A+B+C	Hf	
1.0	0	1	0	1	0	0.50	0.10	2010	2010	0	2.01
4.0	7	6	6	7	6	6.38	1.28	4940	5010	70	4.94
7.0	10	9	9	10	9	9.38	1.88	7910	8010	100	7.91
10.0	18	17	17	18	17	17.38	3.48	10860	11010	150	10.86
7.0	13	12	12	13	12	12.38	2.48	7890	8010	120	7.89
4.0	8	7	7	8	7	6.88	1.38	4930	5010	80	4.93
1.0	1	2	2	2	1	1.75	0.25	2010	2010	0	2.01

L <sub>up</sub>	3.1	P <sub>c</sub>	-
L <sub>u</sub>	-		

G2-66



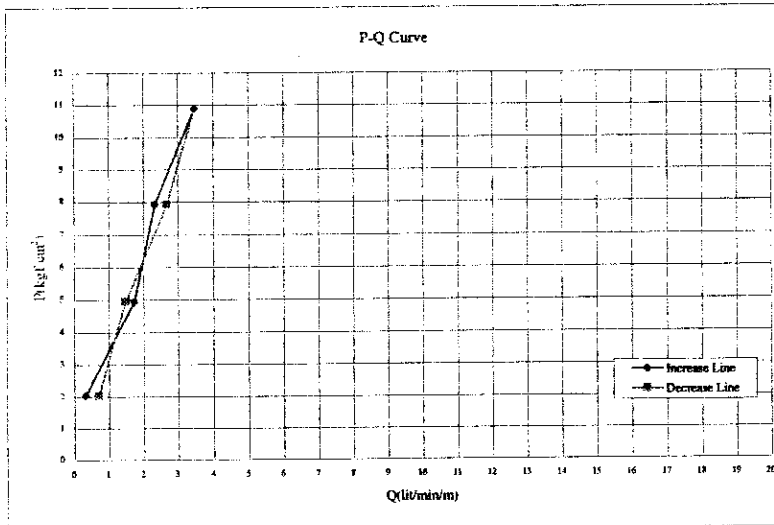
RECORD OF WATER PRESSURE TEST

BH ID-2

Project	WRDMM	Bore Hole No.	BH ID-2	Date	10/4/2002
Depth (m)	( 49.00 - 70.00 )	Test Length (m)	5.00	Hole Radius (cm)	3.50
G.W.L. before day's work (m)	10.70	Pressure gauge height (m) : C/100	0.50		
G.W.L. before testing (m) : B/100	9.80	Packer I/O size (cm)	7.00		
Length (m) and Diameter (cm) of Rod	67.00 m	2.54 cm (φ)			
Length (m) and Diameter (cm) of Hose	8.00 m	2.54 cm (φ)			

Pressure gauge Reading : A/1000 (kgf/cm <sup>2</sup> )	Water Injection (l/min)					Average of Water Injection : q (l/min)	Water Injection for 1 m : Q (l/min/m)	Water Pressure in Head (cm)			Effective Pressure : P (kgf/cm <sup>2</sup> )
	1	2	3	4	5			H	A+B+C	Hf	
	6	7	8	9	10						
1.0	1	2	2	1	2	1.63	0.33	2030	2030	0	2.03
4.0	8	9	9	8	9	8.63	1.73	4940	5030	90	4.94
7.0	11	12	12	11	12	11.63	2.33	7920	8030	110	7.92
10.0	17	18	17	17	18	17.38	3.48	10880	11030	150	10.88
7.0	14	13	13	14	13	13.38	2.68	7910	8030	120	7.91
4.0	7	8	7	7	8	7.38	1.48	4950	5030	80	4.95
1.0	3	4	4	3	4	3.50	0.70	2030	2030	0	2.03

L <sub>u</sub> =	-	P <sub>c</sub> =	-
L <sub>w</sub> =	4.2		



G2-67

RECORD OF WATER PRESSURE TEST

BH TD-3 04/2002

Project	WRDMM	Bore Hole No.	BH TD-3	Date	6/4/2002
Depth (m)	( 13.00 - 20.00 )	Test Length (m)	5.00	Hole Radius (cm)	4.50
G.W.L. before day's work (m)	8.00	Pressure gauge height (m) : C/100	0.20		
G.W.L. before testing (m) : B/100	4.50	Packer NQ size (cm)	9.00	HQ	
Length (m) and Diameter (cm) of Rod	16.00 m	2.54	cm ( $\phi$ )		
Length (m) and Diameter (cm) of Hose	8.00 m	2.54	cm ( $\phi$ )		

Pressure gauge Reading : A/1000 (kgf/cm <sup>2</sup> )	Water Injection (l/min)					Average of Water Injection : q (l/min)	Water Injection for 1 m : Q (l/min/m)	Water Pressure in Head (cm)			Effective Pressure : P (kgf/cm <sup>2</sup> )
	1	2	3	4	5			H	A+B+C	Hf	
	6	7	8	9	10						
1.0	4	7	6	7	7	6.63	1.33	1470	1470	0	1.47
	7	7	6	7	6						
4.0	12	12	11	12	13	12.25	2.45	4360	4470	110	4.36
	13	12	13	12	12						
7.0	21	21	22	22	21	21.50	4.30	7310	7470	160	7.31
	22	22	22	21	21						
10.0	32	33	31	31	31	31.25	6.25	10190	10470	280	10.19
	31	31	31	32	31						
7.0	26	26	26	27	27	26.25	5.25	7290	7470	180	7.29
	26	26	27	26	26						
4.0	17	15	15	16	16	16.25	3.25	4330	4470	140	4.33
	17	16	16	17	17						
1.0	10	11	10	11	11	10.75	2.15	1380	1470	90	1.38
	11	10	11	11	11						

L <sub>10</sub> =	-	P <sub>10</sub> =	4.20
L <sub>10</sub> '=	4.7		

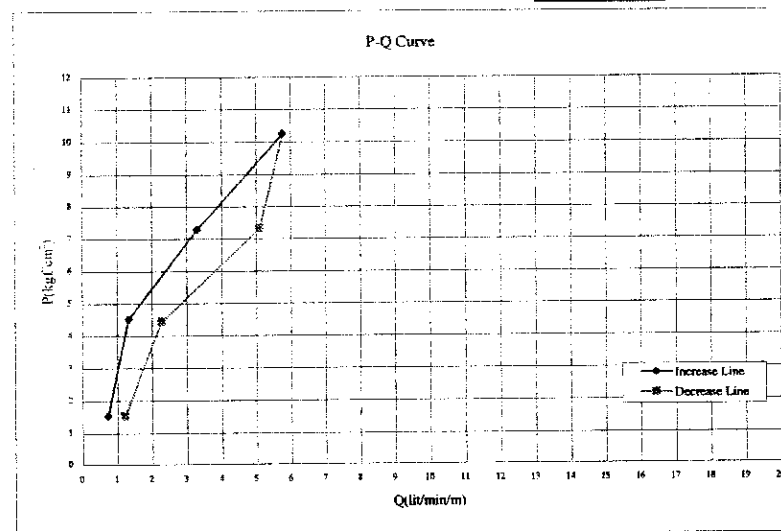
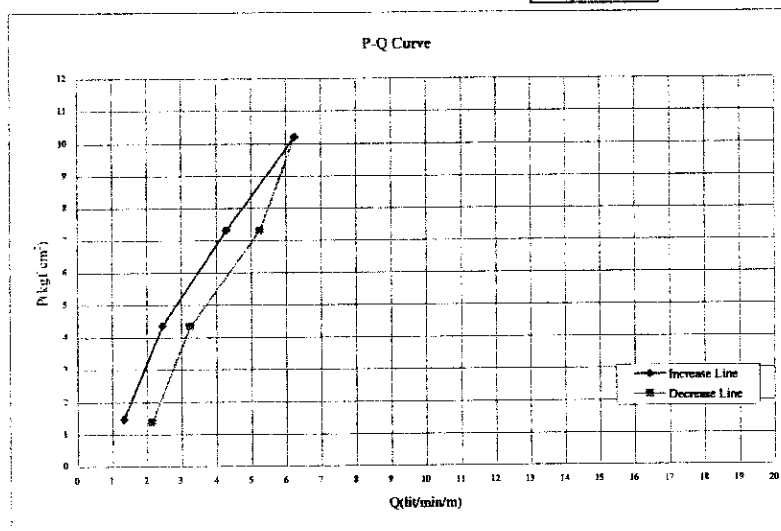
BH TD-3 04/2002

Project	WRDMM	Bore Hole No.	BH TD-3	Date	6/5/2002
Depth (m)	( 20.00 - 25.00 )	Test Length (m)	5.00	Hole Radius (cm)	4.50
G.W.L. before day's work (m)	31.00	Pressure gauge height (m) : C/100	0.20		
G.W.L. before testing (m) : B/100	5.10	Packer NQ size (cm)	9.00	HQ	
Length (m) and Diameter (cm) of Rod	21.50 m	2.54	cm ( $\phi$ )		
Length (m) and Diameter (cm) of Hose	8.00 m	2.54	cm ( $\phi$ )		

Pressure gauge Reading : A/1000 (kgf/cm <sup>2</sup> )	Water Injection (l/min)					Average of Water Injection : q (l/min)	Water Injection for 1 m : Q (l/min/m)	Water Pressure in Head (cm)			Effective Pressure : P (kgf/cm <sup>2</sup> )
	1	2	3	4	5			H	A+B+C	Hf	
	6	7	8	9	10						
1.0	3	4	4	3	3	3.63	0.73	1530	1530	0	1.53
	4	4	4	4	3						
4.0	7	6	7	7	6	6.63	1.33	4530	4530	0	4.53
	6	7	6	7	7						
7.0	17	16	16	17	17	16.50	3.30	7290	7530	240	7.29
	16	16	17	16	17						
10.0	29	29	29	28	29	28.88	5.78	10260	10530	280	10.25
	29	29	28	29	29						
7.0	25	26	26	26	25	25.50	5.10	7310	7530	220	7.31
	25	25	25	26	26						
4.0	11	11	12	12	10	11.38	2.28	4450	4530	80	4.45
	10	11	12	12	12						
1.0	6	5	6	7	6	6.13	1.23	1530	1530	0	1.53
	6	7	6	6	6						

L <sub>10</sub> =	-	P <sub>10</sub> =	4.50
L <sub>10</sub> '=	2.4		

G2-68



RECORD OF WATER PRESSURE TEST

BH TD-3, 05/05/02

Project	WRDMM	Bore Hole No.	BH TD-3	Date	6/5/2002
Depth (m)	( 25.00 - 30.00 )	Test Length (m)	5.00	Hole Radius (cm)	4.50
G.W.L. before day's work (m)	31.00	Pressure gauge height (m) : C/100	0.20		
G.W.L. before testing (m) : B/100	5.50	Packer NQ size (cm)	9.00	HQ	
Length (m) and Diameter (cm) of Rod	26.00 m	2.54 cm (φ)			
Length (m) and Diameter (cm) of Hose	8.00 m	2.54 cm (φ)			

Pressure gauge Reading : A/1000 (kg/cm <sup>2</sup> )	Water Injection (l/min)					Average of Water Injection : q (l/min)	Water Injection for 1 m : Q (l/min/m)	Water Pressure in Head (cm)			Effective Pressure : P (kg/cm <sup>2</sup> )
	1	2	3	4	5			H	A+B+C	Hf	
1.0	5	5	4	4	5	4.38	0.88	1570	1570	0	1.57
4.0	10	11	11	10	11	10.50	2.10	4490	4570	80	4.49
7.0	15	15	16	15	16	15.75	3.15	7450	7570	120	7.45
10.0	27	26	27	27	26	26.75	5.35	10310	10570	260	10.31
7.0	12	12	11	13	13	12.38	2.48	7460	7570	110	7.46
4.0	7	6	6	7	6	6.75	1.35	4570	4570	0	4.57
1.0	3	4	2	2	2	2.38	0.48	1570	1570	0	1.57

L <sub>av</sub> =	-	P <sub>c</sub> =	8.10
L <sub>av</sub> '	4.4		

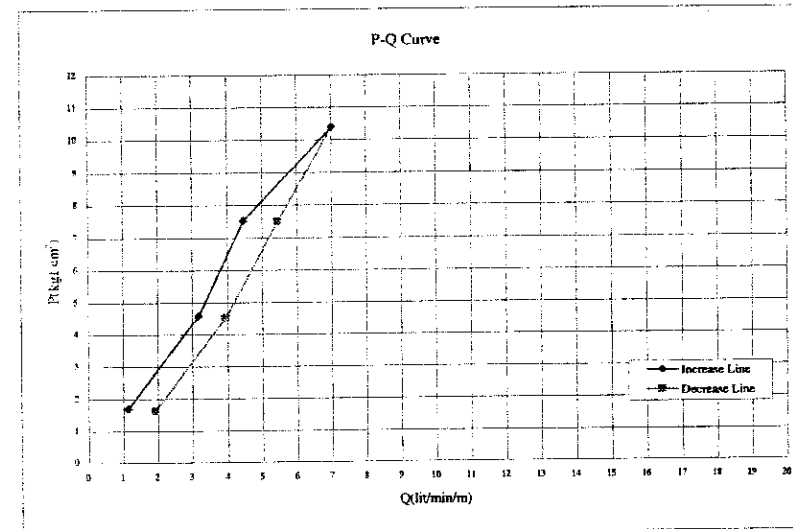
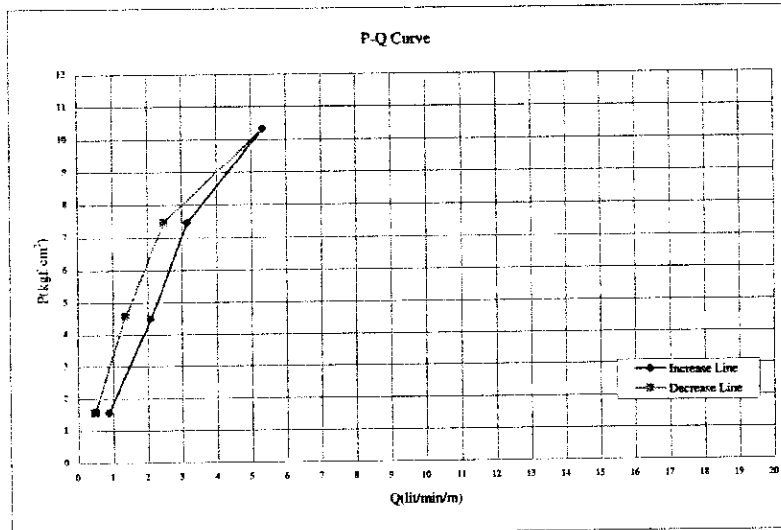
BH TD-3, 05/05/02

Project	WRDMM	Bore Hole No.	BH TD-3	Date	6/5/2002
Depth (m)	( 30.00 - 35.00 )	Test Length (m)	5.00	Hole Radius (cm)	4.50
G.W.L. before day's work (m)	31.40	Pressure gauge height (m) : C/100	0.20		
G.W.L. before testing (m) : B/100	6.80	Packer NQ size (cm)	9.00	HQ	
Length (m) and Diameter (cm) of Rod	31.50 m	2.54 cm (φ)			
Length (m) and Diameter (cm) of Hose	8.00 m	2.54 cm (φ)			

Pressure gauge Reading : A/1000 (kg/cm <sup>2</sup> )	Water Injection (l/min)					Average of Water Injection : q (l/min)	Water Injection for 1 m : Q (l/min/m)	Water Pressure in Head (cm)			Effective Pressure : P (kg/cm <sup>2</sup> )
	1	2	3	4	5			H	A+B+C	Hf	
1.0	7	6	5	5	6	5.75	1.15	1700	1700	0	1.70
4.0	17	16	16	17	16	15.88	3.18	4580	4700	120	4.58
7.0	22	23	23	21	22	22.38	4.48	7520	7700	180	7.52
10.0	35	35	36	35	35	35.13	7.03	10380	10700	320	10.38
7.0	27	28	28	27	27	27.25	5.45	7490	7700	210	7.49
4.0	22	19	19	20	20	19.75	3.95	4570	4700	170	4.53
1.0	9	9	10	9	10	9.63	1.93	1620	1700	80	1.62

L <sub>av</sub> =	6.7	P <sub>c</sub> =	-
L <sub>av</sub> '	-		

G2-69



RECORD OF WATER PRESSURE TEST

Project	WRDMM	Bore Hole No.	BH ID-3	Date	6/7/2002
Depth (m)	( 31.00 - 40.00 )	Test Length (m)	5.00	Hole Radius (cm)	4.50
G.W.L. before day's work (m)	31.30	Pressure gauge height (m) : C/100	0.20		
G.W.L. before testing (m) : B/100	6.70	Packer NQ size (cm)	9.00	HQ	
Length (m) and Diameter (cm) of Rod	36.00 m	2.54	cm ( φ )		
Length (m) and Diameter (cm) of Hose	8.00 m	2.54	cm ( φ )		

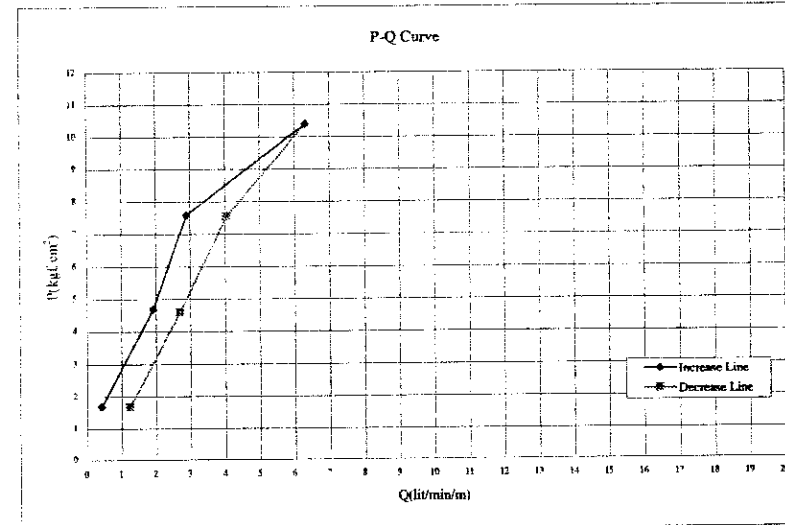
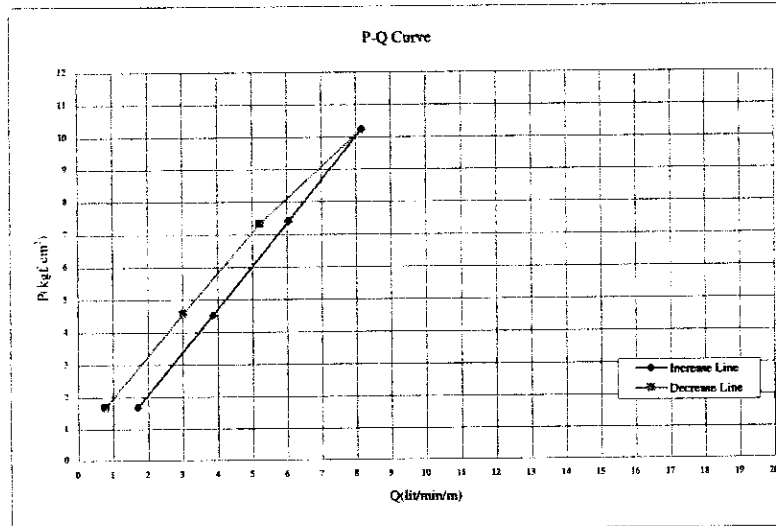
Pressure gauge Reading : A/1000 (kgf/cm <sup>2</sup> )	Water Injection (l/min)					Average of Water Injection : q (l/min)	Water Injection for 1 m : Q (l/min/m)	Water Pressure in Head (cm)			Effective Pressure : P (kgf/cm <sup>2</sup> )
	1	2	3	4	5			H	A+B+C	Hf	
	6	7	8	9	10						
1.0	9	8	7	8	8	8.50	1.70	1690	1690	0	1.69
4.0	20	19	19	20	20	19.38	3.88	4530	4690	160	4.53
7.0	31	31	30	31	30	30.25	6.05	7400	7690	290	7.40
10.0	42	41	42	40	42	40.88	8.18	10230	10690	460	10.23
7.0	25	28	25	25	28	26.13	5.23	7330	7690	360	7.33
4.0	15	14	14	16	16	15.13	3.03	4580	4690	110	4.58
1.0	4	4	3	2	4	3.88	0.78	1690	1690	0	1.69

L <sub>u</sub> =	8.0	P <sub>c</sub> =	-
L <sub>u</sub> '=	-		

Project	WRDMM	Bore Hole No.	BH ID-3	Date	6/8/2002
Depth (m)	( 40.00 - 45.00 )	Test Length (m)	5.00	Hole Radius (cm)	4.50
G.W.L. before day's work (m)	31.30	Pressure gauge height (m) : C/100	0.20		
G.W.L. before testing (m) : B/100	6.70	Packer NQ size (cm)	9.00	HQ	
Length (m) and Diameter (cm) of Rod	36.00 m	2.54	cm ( φ )		
Length (m) and Diameter (cm) of Hose	8.00 m	2.54	cm ( φ )		

Pressure gauge Reading : A/1000 (kgf/cm <sup>2</sup> )	Water Injection (l/min)					Average of Water Injection : q (l/min)	Water Injection for 1 m : Q (l/min/m)	Water Pressure in Head (cm)			Effective Pressure : P (kgf/cm <sup>2</sup> )
	1	2	3	4	5			H	A+B+C	Hf	
	6	7	8	9	10						
1.0	2	1	2	3	2	2.13	0.43	1690	1690	0	1.69
4.0	9	10	9	10	10	9.63	1.93	4690	4690	0	4.69
7.0	14	15	14	14	14	14.50	2.90	7580	7690	110	7.58
10.0	29	31	31	32	32	31.63	6.33	10400	10690	290	10.40
7.0	21	20	20	20	20	20.25	4.05	7540	7690	150	7.54
4.0	14	14	13	13	13	13.50	2.70	4390	4690	100	4.59
1.0	6	6	5	6	7	6.25	1.25	1690	1690	0	1.69

L <sub>u</sub> =	-	P <sub>c</sub> =	8.20
L <sub>u</sub> '=	4.6		



G2-70

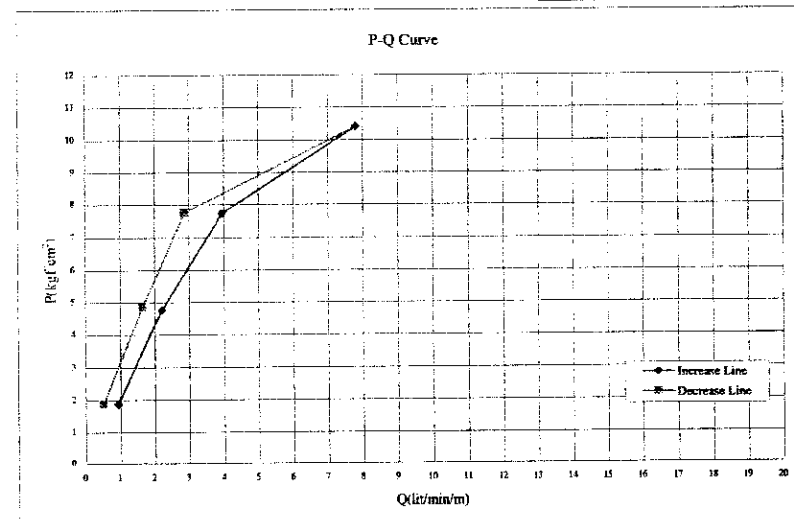
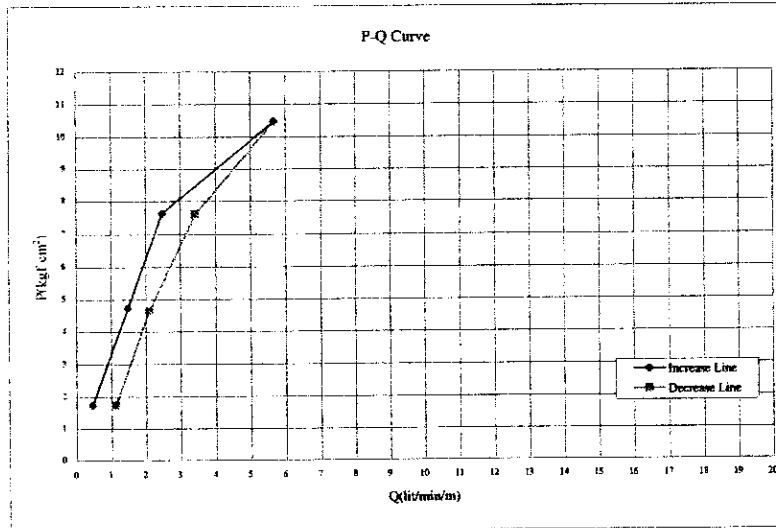
RECORD OF WATER PRESSURE TEST

Project	WRDMM	Bore Hole No.	BH TD-3	Date	6/8/2002						
Depth (m)	( 35.00 - 50.00 )	Test Length (m)	5.00	Hole Radius (cm)	4.50						
G.W.L. before day's work (m)	32.10	Pressure gauge height (m) : C/100	0.20								
G.W.L. before testing (m) : B/100	7.10	Packer NQ size (cm)	9.00	HQ							
Length (m) and Diameter (cm) of Rod	46.00 m	2.54	cm ( φ )								
Length (m) and Diameter (cm) of Hose	8.00 m	2.54	cm ( φ )								
Pressure gauge Reading : A/1000 (kg/cm <sup>2</sup> )	Water Injection (l/min)					Average of Water Injection : q (l/min)	Water Injection for 1 m : Q (l/min/m)	Water Pressure in Head (cm)			Effective Pressure : P (kg/cm <sup>2</sup> )
	1	2	3	4	5			H	A+B+C	Hf	
1.0	6	7	8	9	10	2.25	0.45	1730	1730	0	1.73
4.0	3	3	2	2	2	7.38	1.48	4730	4730	0	4.73
7.0	1	2	2	2	3	12.38	2.48	7625	7730	105	7.63
10.0	7	7	7	7	8	38.38	5.68	10470	10730	260	10.47
7.0	8	8	7	8	7	17.13	3.43	7590	7730	140	7.59
4.0	13	13	14	12	12	10.50	2.10	4630	4730	100	4.63
1.0	12	12	12	13	12	5.63	1.13	1730	1730	0	1.73
	30	29	29	28	28						
	28	29	28	28	28						
	17	17	18	17	18						
	17	16	16	17	18						
	11	11	12	10	11						
	10	10	11	10	10						
	6	6	7	5	5						
	6	5	5	6	6						

Lu= - Pc= 7.70  
Lu= 3.2

Project	WRDMM	Bore Hole No.	BH TD-3	Date	6/15/2002						
Depth (m)	( 36.00 - 55.00 )	Test Length (m)	5.00	Hole Radius (cm)	4.50						
G.W.L. before day's work (m)	32.00	Pressure gauge height (m) : C/100	0.20								
G.W.L. before testing (m) : B/100	8.50	Packer NQ size (cm)	9.00	HQ							
Length (m) and Diameter (cm) of Rod	51.00 m	2.54	cm ( φ )								
Length (m) and Diameter (cm) of Hose	8.00 m	2.54	cm ( φ )								
Pressure gauge Reading : A/1000 (kg/cm <sup>2</sup> )	Water Injection (l/min)					Average of Water Injection : q (l/min)	Water Injection for 1 m : Q (l/min/m)	Water Pressure in Head (cm)			Effective Pressure : P (kg/cm <sup>2</sup> )
	1	2	3	4	5			H	A+B+C	Hf	
1.0	6	5	4	4	5	4.63	0.93	1870	1870	0	1.87
4.0	4	4	5	5	5	11.00	2.20	4770	4870	100	4.77
7.0	11	10	11	11	12	19.75	3.95	7720	7870	150	7.72
10.0	19	19	20	20	20	39.00	7.80	10410	10870	460	10.41
7.0	21	21	19	20	19	14.38	2.88	7750	7870	120	7.75
4.0	35	36	40	40	40	8.25	1.65	4870	4870	0	4.87
1.0	39	39	40	39	39	2.50	0.50	1870	1870	0	1.87
	15	15	14	14	14						
	14	14	15	14	15						
	8	8	9	8	9						
	8	8	8	9	8						
	3	3	2	2	3						
	2	2	3	3	2						

Lu= - Pc= 7.20  
Lu= 4.5



G2-71



RECORD OF WATER PRESSURE TEST

Project	WRDMM	Bore Hole No.	BH TD-3	Date	6/15/2002
Depth (m)	( 51.00 - 59.00 )	Test Length (m)	5.00	Hole Radius (cm)	4.50
G.W.L. before day's work (m)	32.00	Pressure gauge height (m) : C/100	0.20		
G.W.L. before testing (m) : B/100	8.50	Packer NQ size (cm)	9.00 HQ		
Length (m) and Diameter (cm) of Rod	56.00 m	2.54 cm (φ)			
Length (m) and Diameter (cm) of Hose	8.00 m	2.54 cm (φ)			

Pressure gauge Reading : A/1000 (kgf/cm <sup>2</sup> )	Water Injection (l/min)					Average of Water Injection : q (l/min)	Water Injection for 1 m : Q (l/min/m)	Water Pressure in Head (cm)			Effective Pressure : P (kgf/cm <sup>2</sup> )
	1	2	3	4	5			H	A+B+C	Hf	
1.0	6	7	8	9	10	6.38	1.28	1870	1870	0	1.87
	7	7	6	6	6						
4.0	14	12	12	12	12	12.50	2.30	4770	4870	100	4.77
	12	12	14	14	12						
7.0	29	28	28	28	28	27.63	5.53	7570	7870	300	7.57
	27	27	27	28	27						
10.0	39	35	35	35	38	35.88	7.18	10480	10870	390	10.48
	35	35	35	36	38						
7.0	25	24	24	24	23	23.75	4.75	7640	7870	230	7.64
	23	24	24	23	24						
4.0	9	10	9	10	10	9.38	1.88	4870	4870	0	4.87
	9	9	10	9	9						
1.0	5	5	4	4	4	4.50	0.90	1870	1870	0	1.87
	5	5	4	4	5						

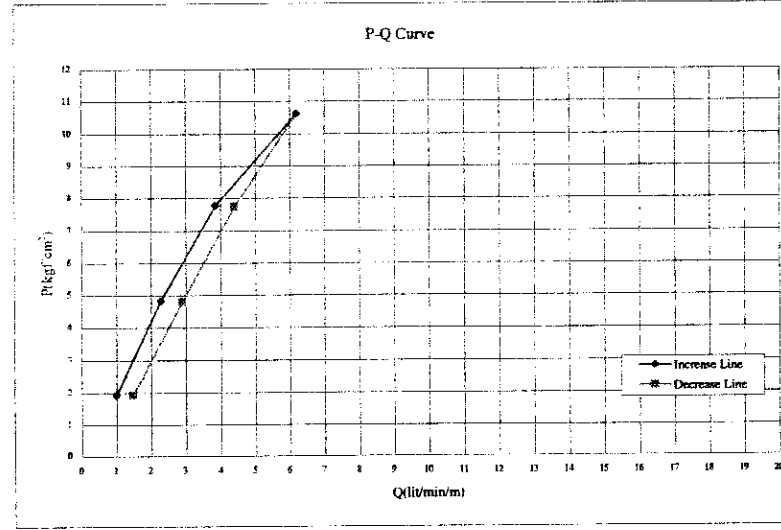
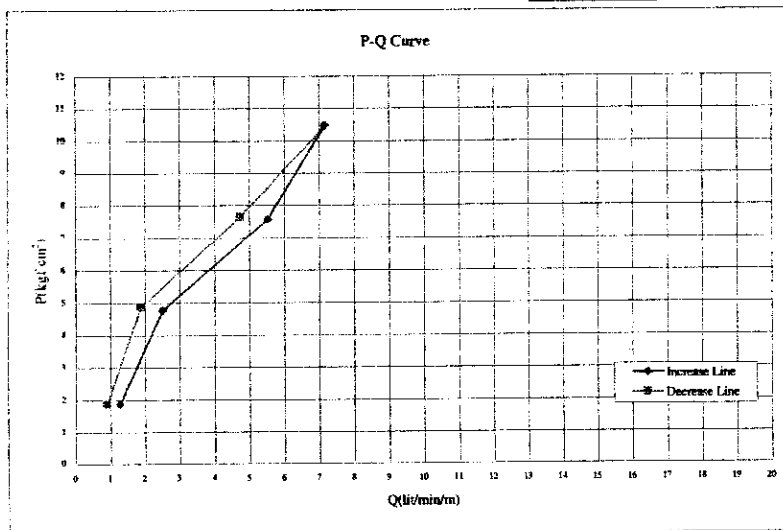
L <sub>10</sub> =	-	P <sub>c</sub> =	4.80
L <sub>15</sub> =	4.7		

Project	WRDMM	Bore Hole No.	BH TD-3	Date	6/21/2002
Depth (m)	( 49.00 - 49.00 )	Test Length (m)	5.00	Hole Radius (cm)	4.50
G.W.L. before day's work (m)	32.00	Pressure gauge height (m) : C/100	0.20		
G.W.L. before testing (m) : B/100	9.00	Packer NQ size (cm)	9.00 HQ		
Length (m) and Diameter (cm) of Rod	61.00 m	2.54 cm (φ)			
Length (m) and Diameter (cm) of Hose	8.00 m	2.54 cm (φ)			

Pressure gauge Reading : A/1000 (kgf/cm <sup>2</sup> )	Water Injection (l/min)					Average of Water Injection : q (l/min)	Water Injection for 1 m : Q (l/min/m)	Water Pressure in Head (cm)			Effective Pressure : P (kgf/cm <sup>2</sup> )
	1	2	3	4	5			H	A+B+C	Hf	
1.0	5	4	4	5	5	5.00	1.00	1920	1920	0	1.92
	6	6	5	4	6						
4.0	10	12	11	12	12	11.38	2.28	4830	4920	90	4.83
	11	12	11	11	11						
7.0	18	19	19	19	18	19.25	3.85	7770	7920	150	7.77
	20	21	19	20	20						
10.0	30	31	30	31	32	31.00	6.20	10820	10920	300	10.62
	31	32	31	31	31						
7.0	23	23	23	22	22	22.00	4.40	7740	7920	180	7.74
	21	22	21	21	22						
4.0	15	14	15	14	14	14.50	2.90	4810	4920	110	4.81
	13	15	14	15	15						
1.0	7	8	6	7	7	7.38	1.48	1920	1920	0	1.92
	8	8	7	7	8						

L <sub>10</sub> =	-	P <sub>c</sub> =	7.00
L <sub>15</sub> =	4.5		

G2-72



RECORD OF WATER PRESSURE TEST

Project	WRDMM	Bore Hole No.	BH TD-3	Date	6/22/2002
Depth (m)	( 65.00 - 70.00 )	Test Length (m)	5.00	Hole Radius (cm)	4.50
G.W.L. before day's work (m)	31.80	Pressure gauge height (m) : C/100	0.20		
G.W.L. before testing (m) : B/100	8.50	Packer NQ size (cm)	9.00	HQ	
Length (m) and Diameter (cm) of Rod	66.00 m	2.54	cm (φ)		
Length (m) and Diameter (cm) of Hose	8.00 m	2.54	cm (φ)		

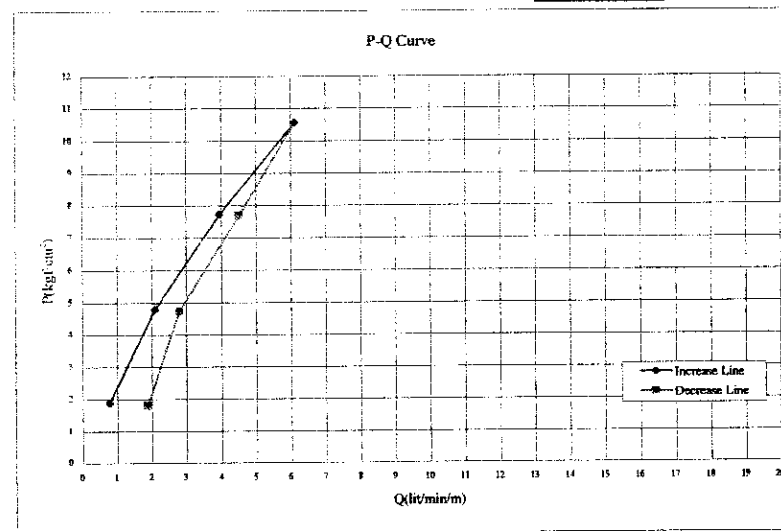
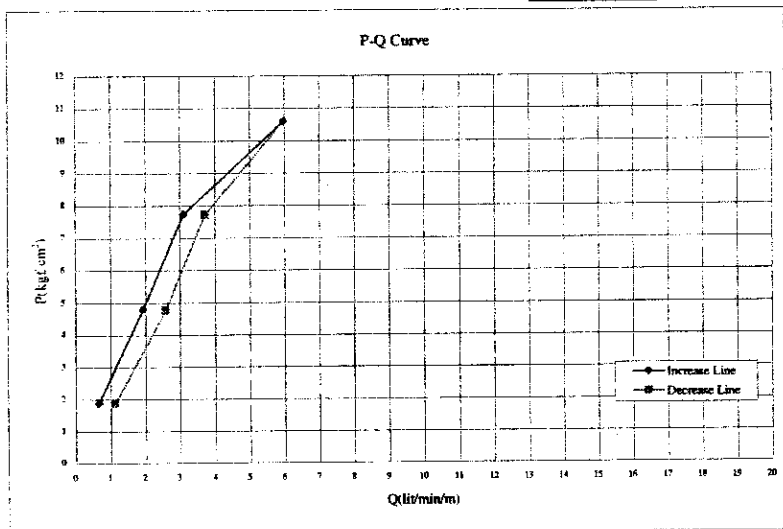
Pressure gauge Reading : A/1000 (kgf/cm <sup>2</sup> )	Water Injection (l/min)					Average of Water Injection : q (l/min)	Water Injection for 1 m : Q (l/min/m)	Water Pressure in Head (cm)			Effective Pressure : P (kgf/cm <sup>2</sup> )
	1	2	3	4	5			H=A+B+C-Hf			
	6	7	8	9	10			H	A+B+C	Hf	
1.0	3	2	4	4	2	3.25	0.65	1870	1870	0	1.87
4.0	10	9	10	10	9	9.63	1.93	4790	4870	80	4.79
7.0	16	15	16	16	15	15.50	3.10	7740	7870	130	7.74
10.0	29	29	29	31	30	29.88	5.98	10990	10870	280	10.59
7.0	19	19	20	19	19	18.63	3.73	7720	7870	150	7.72
4.0	14	11	14	13	13	12.88	2.98	4760	4870	110	4.76
1.0	6	7	5	5	6	5.63	1.13	1870	1870	0	1.87

L <sub>10</sub> =	-	P <sub>10</sub> =	7.90
L <sub>5</sub> =	4.2		

Project	WRDMM	Bore Hole No.	BH TD-3	Date	6/22/2002
Depth (m)	( 70.00 - 75.00 )	Test Length (m)	5.00	Hole Radius (cm)	4.50
G.W.L. before day's work (m)	31.80	Pressure gauge height (m) : C/100	0.20		
G.W.L. before testing (m) : B/100	8.60	Packer NQ size (cm)	9.00	HQ	
Length (m) and Diameter (cm) of Rod	71.00 m	2.54	cm (φ)		
Length (m) and Diameter (cm) of Hose	8.00 m	2.54	cm (φ)		

Pressure gauge Reading : A/1000 (kgf/cm <sup>2</sup> )	Water Injection (l/min)					Average of Water Injection : q (l/min)	Water Injection for 1 m : Q (l/min/m)	Water Pressure in Head (cm)			Effective Pressure : P (kgf/cm <sup>2</sup> )
	1	2	3	4	5			H=A+B+C-Hf			
	6	7	8	9	10			H	A+B+C	Hf	
1.0	4	4	4	5	4	3.88	0.78	1880	1880	0	1.88
4.0	10	10	9	9	10	10.50	2.10	4790	4880	90	4.79
7.0	19	19	19	19	19	19.75	3.95	7720	7880	160	7.72
10.0	31	31	30	30	31	30.63	6.13	10870	10880	310	10.57
7.0	29	31	31	31	30	22.63	4.53	7700	7880	180	7.70
4.0	24	24	23	23	22	14.00	2.80	4740	4880	140	4.74
1.0	9	10	9	9	9	9.38	1.88	1800	1880	80	1.80

L <sub>10</sub> =	-	P <sub>10</sub> =	6.20
L <sub>5</sub> =	4.5		



G2-73

RECORD OF WATER PRESSURE TEST

Project	WRDMM	Bore Hole No.	BH TD-3	Date	6/22/2002
Depth (m)	( 75.00 - 80.00 )	Test Length (m)	5.00	Hole Radius (cm)	4.50
G.W.L. before day's work (m)	31.80	Pressure gauge height (m) : C/100	0.20		
G.W.L. before testing (m) : B/100	8.90	Packer NQ size (cm)	9.00	HQ	
Length (m) and Diameter (cm) of Rod	76.00 m	2.54 cm (φ)			
Length (m) and Diameter (cm) of Hose	8.00 m	2.54 cm (φ)			

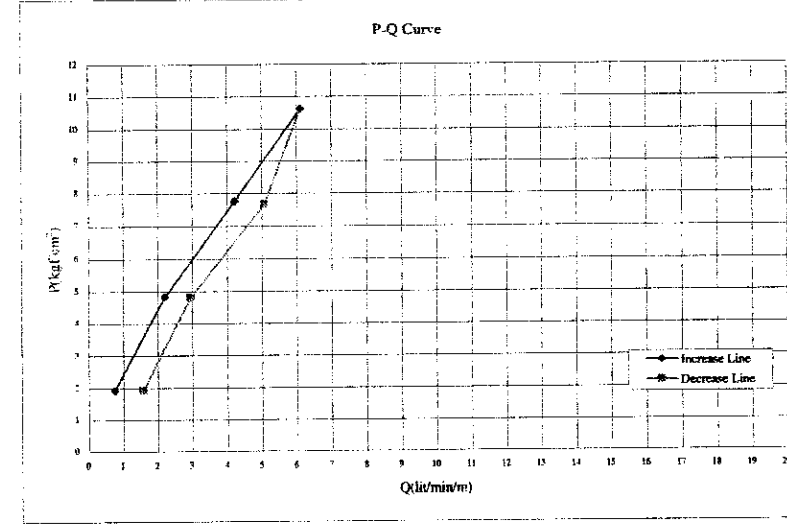
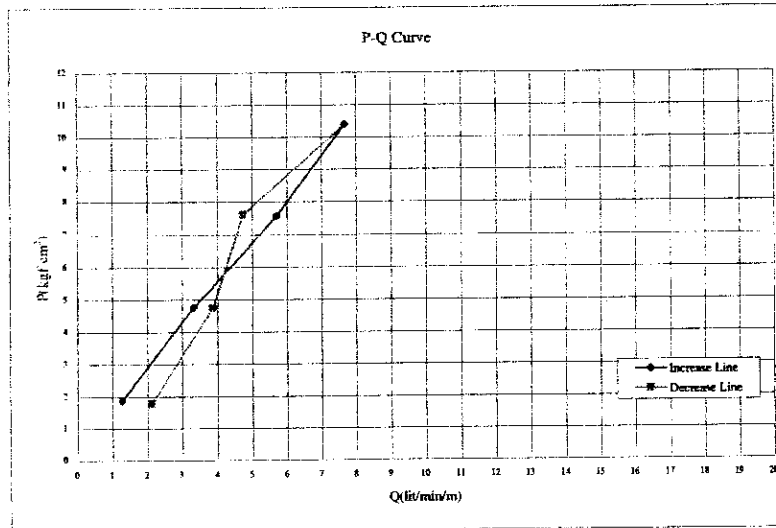
Pressure gauge Reading : A/1000 (kgf/cm <sup>2</sup> )	Water Injection (l/min)					Average of Water Injection : q (l/min)	Water Injection for 1 m : Q (l/min/m)	Water Pressure in Head (cm)			Effective Pressure : P (kgf/cm <sup>2</sup> )
	1	2	3	4	5			H	A+B+C	Hf	
1.0	6	7	6	7	6	6.38	1.28	1870	1870	0	1.87
4.0	17	16	17	16	14	16.63	3.33	4760	4870	110	4.76
7.0	29	28	28	29	29	28.50	5.70	7570	7870	300	7.57
10.0	38	39	38	38	38	38.38	7.68	10990	10870	480	10.39
7.0	24	24	23	24	24	23.75	4.75	7610	7870	260	7.61
4.0	20	19	19	20	20	19.38	3.88	4740	4870	130	4.74
1.0	14	10	10	11	11	10.63	2.13	1780	1870	90	1.78

L <sub>0</sub> =	-	P <sub>0</sub> =	4.80
L <sub>u</sub> =	7.0		

Project	WRDMM	Bore Hole No.	BH TD-3	Date	6/24/2002
Depth (m)	( 80.00 - 85.00 )	Test Length (m)	5.00	Hole Radius (cm)	4.50
G.W.L. before day's work (m)	31.80	Pressure gauge height (m) : C/100	0.20		
G.W.L. before testing (m) : B/100	9.00	Packer NQ size (cm)	9.00	HQ	
Length (m) and Diameter (cm) of Rod	81.00 m	2.54 cm (φ)			
Length (m) and Diameter (cm) of Hose	8.00 m	2.54 cm (φ)			

Pressure gauge Reading : A/1000 (kgf/cm <sup>2</sup> )	Water Injection (l/min)					Average of Water Injection : q (l/min)	Water Injection for 1 m : Q (l/min/m)	Water Pressure in Head (cm)			Effective Pressure : P (kgf/cm <sup>2</sup> )
	1	2	3	4	5			H	A+B+C	Hf	
1.0	4	4	3	4	3	3.75	0.75	1920	1920	0	1.92
4.0	10	11	11	10	11	11.00	2.20	4830	4920	90	4.83
7.0	21	22	21	20	21	21.13	4.23	7760	7920	160	7.76
10.0	31	31	31	31	32	30.63	6.13	10620	10920	300	10.62
7.0	25	26	25	25	26	25.38	5.08	7670	7920	250	7.67
4.0	15	14	14	15	15	14.75	2.95	4810	4920	110	4.81
1.0	9	8	8	8	7	7.88	1.58	1920	1920	0	1.92

L <sub>0</sub> =	-	P <sub>0</sub> =	4.80
L <sub>u</sub> =	4.8		



G2-74

RECORD OF WATER PRESSURE TEST

Project	WRDMM	Bore Hole No.	BH TD-3	Date	6/25/2002
Depth (m)	( 85.00 - 90.00 )	Test Length (m)	5.00	Hole Radius (cm)	4.50
G.W.L. before day's work (m)	31.50	Pressure gauge height (m) : C/100	0.20		
G.W.L. before testing (m) : B/100	9.50	Packer NQ size (cm)	9.00	HQ	
Length (m) and Diameter (cm) of Rod	86.00 m	2.54	cm ( φ )		
Length (m) and Diameter (cm) of Hose	8.00 m	2.54	cm ( φ )		

Pressure gauge Reading : A/1000 (kgf/cm <sup>2</sup> )	Water Injection (l/min)					Average of Water Injection : q (l/min)	Water Injection for 1 m : Q (l/min/m)	Water Pressure in Head (cm) H=A+B+C-Hf			Effective Pressure : P (kgf/cm <sup>2</sup> )
	1	2	3	4	5			H	A+B+C	Hf	
1.0	5	4	4	5	5	4.63	0.93	1970	1970	0	1.97
4.0	4	5	5	4	5	9.38	1.88	4870	4970	100	4.87
7.0	9	8	9	9	10	18.50	3.70	7810	7970	160	7.81
10.0	10	10	9	10	9	28.75	5.75	10680	10970	290	10.68
7.0	19	18	18	19	19	14.38	2.88	7850	7970	120	7.85
4.0	17	19	18	18	19	6.63	1.33	4970	4970	0	4.97
1.0	29	39	28	29	29	3.50	0.70	1970	1970	0	1.97
	28	29	29	29	28						
	15	14	13	14	14						
	14	15	14	15	15						
	7	6	7	7	6						
	7	7	6	6	7						
	3	4	4	3	3						
	4	3	3	4	4						

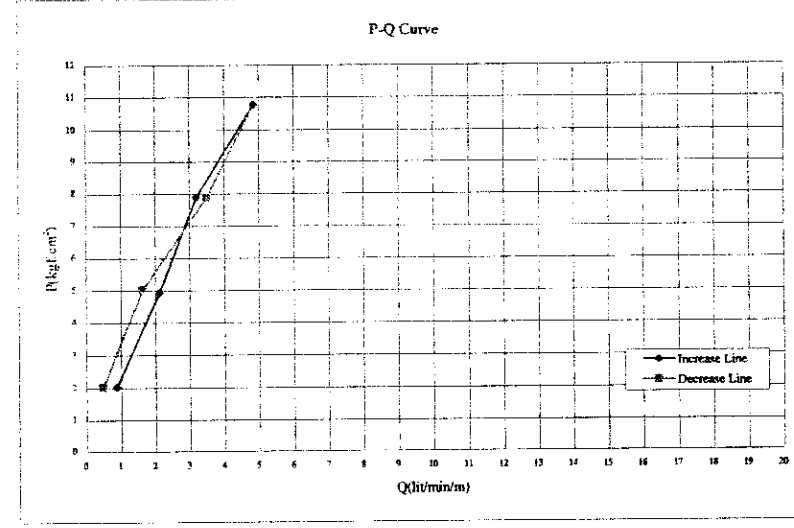
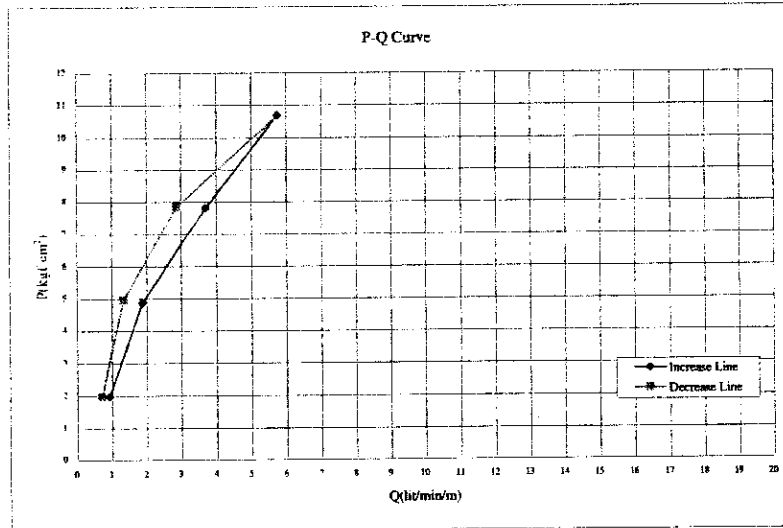
L <sub>u</sub> =	-	P <sub>c</sub> =	5.50
L <sub>u</sub> '=	3.6		

G2-75

Project	WRDMM	Bore Hole No.	BH TD-3	Date	6/25/2002
Depth (m)	( 90.00 - 95.00 )	Test Length (m)	5.00	Hole Radius (cm)	4.50
G.W.L. before day's work (m)	31.50	Pressure gauge height (m) : C/100	0.20		
G.W.L. before testing (m) : B/100	10.00	Packer NQ size (cm)	9.00	HQ	
Length (m) and Diameter (cm) of Rod	91.00 m	2.54	cm ( φ )		
Length (m) and Diameter (cm) of Hose	8.00 m	2.54	cm ( φ )		

Pressure gauge Reading : A/1000 (kgf/cm <sup>2</sup> )	Water Injection (l/min)					Average of Water Injection : q (l/min)	Water Injection for 1 m : Q (l/min/m)	Water Pressure in Head (cm) H=A+B+C-Hf			Effective Pressure : P (kgf/cm <sup>2</sup> )
	1	2	3	4	5			H	A+B+C	Hf	
1.0	4	5	4	4	4	4.38	0.88	2020	2020	0	2.02
4.0	5	5	4	5	4	10.63	2.13	4930	5020	90	4.93
7.0	10	9	11	11	11	16.00	3.20	7900	8020	120	7.90
10.0	11	10	11	11	10	24.25	4.85	10770	11020	250	10.77
7.0	15	16	17	15	15	17.50	3.50	7880	8020	140	7.88
4.0	16	16	17	16	17	8.13	1.63	5020	5020	0	5.02
1.0	24	24	24	24	25	3.38	0.68	2020	2020	0	2.02
	25	24	24	26	24						
	18	17	18	18	17						
	18	17	17	17	18						
	6	6	9	9	9						
	8	8	9	8	8						
	3	2	2	3	3						
	2	2	2	2	3						

L <sub>u</sub> =	-	P <sub>c</sub> =	9.30
L <sub>u</sub> '=	4.2		



RECORD OF WATER PRESSURE TEST

BH TD-3, 7/9/2002

Project	WRDMM	Bore Hole No.	BH TD-3	Date	7/9/2002
Depth (m)	( 95.00 - 100.00 )	Test Length (m)	5.00	Hole Radius (cm)	3.50
G.W.L. before day's work (m)	31.40	Pressure gauge height (m) : C/100	0.20		
G.W.L. before testing (m) : B/100	11.00	Packer NQ size (cm)	7.00	NQ	
Length (m) and Diameter (cm) of Rod	96.00 m	2.54 cm (φ)			
Length (m) and Diameter (cm) of Hose	8.00 m	2.54 cm (φ)			

Pressure gauge Reading : A/1000 (kg/cm <sup>2</sup> )	Water Injection (l/min)					Average of Water Injection : q (l/min)	Water Injection for 1 m : Q (l/min/m)	Water Pressure in Head (cm) H=A+B+C-Hf			Effective Pressure : P (kg/cm <sup>2</sup> )
	1	2	3	4	5			H	A+B+C	Hf	
	6	7	8	9	10						
1.0	4	3	4	4	4	3.75	0.75	2120	2120	0	2.12
4.0	11	10	11	11	12	10.25	2.05	5010	5120	110	5.01
7.0	15	14	15	15	15	14.88	2.98	8005	8120	115	8.01
10.0	23	24	24	24	24	23.63	4.73	10860	11120	260	10.86
7.0	14	12	12	13	12	11.88	2.38	7990	8120	130	7.99
4.0	8	8	9	8	9	8.25	1.65	5120	5120	0	5.12
1.0	2	2	1	2	2	1.88	0.38	2120	2120	0	2.12

L <sub>10</sub> =	4.3	P <sub>10</sub> =	-
L <sub>5</sub> =	-	P <sub>5</sub> =	-

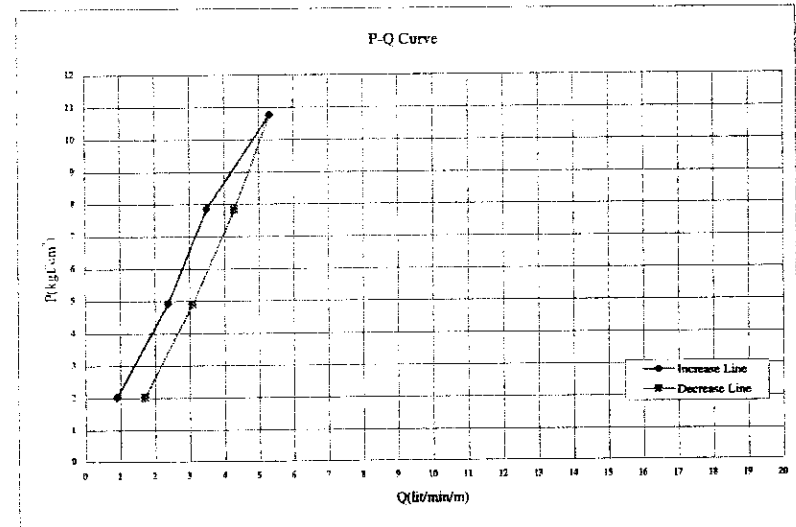
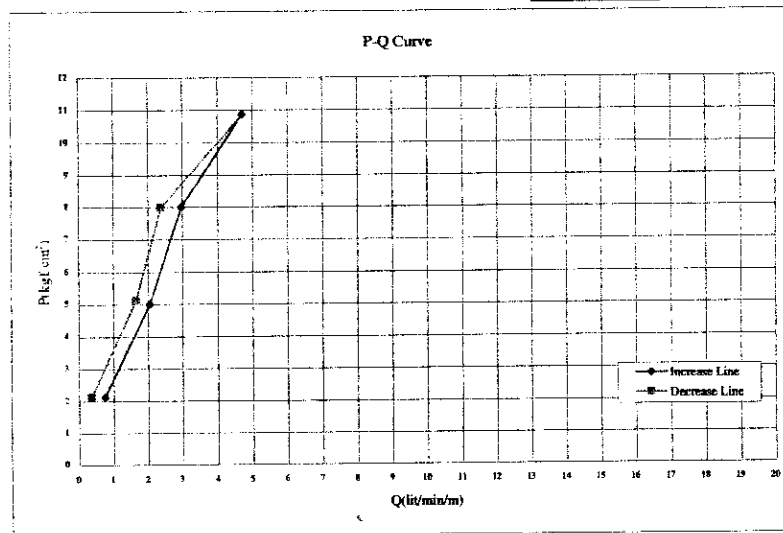
BH TD-3, 7/10/2002

Project	WRDMM	Bore Hole No.	BH TD-3	Date	7/10/2002
Depth (m)	( 100.00 - 105.00 )	Test Length (m)	5.00	Hole Radius (cm)	3.50
G.W.L. before day's work (m)	16.50	Pressure gauge height (m) : C/100	0.20		
G.W.L. before testing (m) : B/100	10.00	Packer NQ size (cm)	7.00	NQ	
Length (m) and Diameter (cm) of Rod	101.00 m	2.54 cm (φ)			
Length (m) and Diameter (cm) of Hose	8.00 m	2.54 cm (φ)			

Pressure gauge Reading : A/1000 (kg/cm <sup>2</sup> )	Water Injection (l/min)					Average of Water Injection : q (l/min)	Water Injection for 1 m : Q (l/min/m)	Water Pressure in Head (cm) H=A+B+C-Hf			Effective Pressure : P (kg/cm <sup>2</sup> )
	1	2	3	4	5			H	A+B+C	Hf	
	6	7	8	9	10						
1.0	4	4	6	4	5	4.50	0.90	2020	2020	0	2.02
4.0	12	12	13	12	11	11.88	2.38	4920	5020	100	4.92
7.0	18	18	18	19	17	17.50	3.50	7860	8020	160	7.86
10.0	26	27	26	26	27	26.63	5.33	10760	11020	260	10.76
7.0	22	24	21	21	21	21.90	4.30	7830	8020	190	7.83
4.0	15	16	16	15	15	15.38	3.08	4900	5020	120	4.90
1.0	9	8	9	8	9	8.50	1.70	2020	2020	0	2.02

L <sub>10</sub> =	5.6	P <sub>10</sub> =	-
L <sub>5</sub> =	-	P <sub>5</sub> =	-

G2-76



RECORD OF WATER PRESSURE TEST

BH TD-3, 110-115m

Project	WRDMM	Bore Hole No.	BH TD-3	Date	7/10/2002
Depth (m)	( 105.00 - 110.00 )	Test Length (m)	5.00	Hole Radius (cm)	3.50
G.W.L. before day's work (m)	16.50	Pressure gauge height (m) : C/100	0.20		
G.W.L. before testing (m) : B/100	10.50	Packer NQ size (cm)	7.00 NQ		
Length (m) and Diameter (cm) of Rod	106.00 m	2.54 cm (φ)			
Length (m) and Diameter (cm) of Hose	8.00 m	2.54 cm (φ)			

Pressure gauge Reading : A/1000 (kg/cm <sup>2</sup> )	Water Injection (l/min)					Average of Water Injection : q (l/min)	Water Injection for 1 m : Q (l/min/m)	Water Pressure in Head (cm)			Effective Pressure : P (kg/cm <sup>2</sup> )
	1	2	3	4	5			H=A+B+C-Hf			
	6	7	8	9	10			H	A+B+C	Hf	
1.0	3	3	4	4	3	3.38	0.68	2070	2070	0	2.07
	3	4	3	4	2						
4.0	9	10	9	10	10	9.63	1.93	4970	5070	100	4.97
	11	10	9	10	9						
7.0	15	14	16	14	14	14.63	2.93	7950	8070	130	7.95
	15	14	15	15	15						
10.0	21	20	22	22	23	21.50	4.30	10910	11070	160	10.91
	22	22	21	21	21						
7.0	18	17	18	18	17	17.75	3.55	7930	8070	140	7.93
	17	18	19	18	18						
4.0	15	14	14	15	14	14.25	2.85	4950	5070	120	4.95
	14	14	15	14	14						
1.0	8	8	9	8	7	7.50	1.50	2070	2070	0	2.07
	7	7	8	7	7						

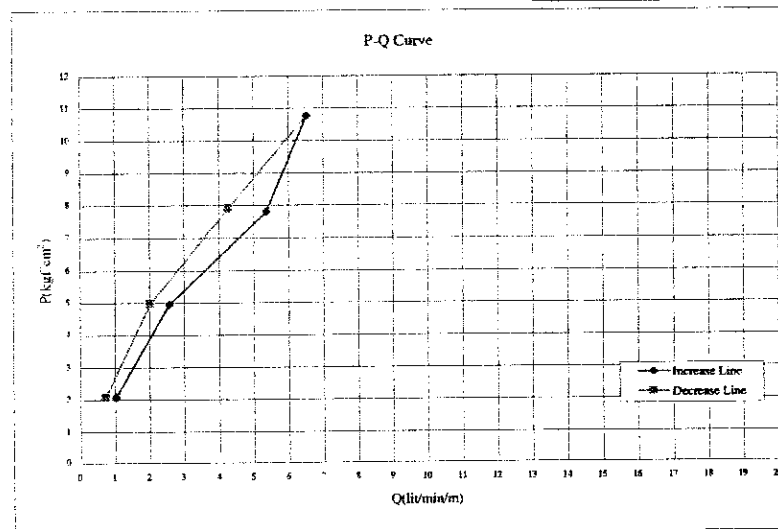
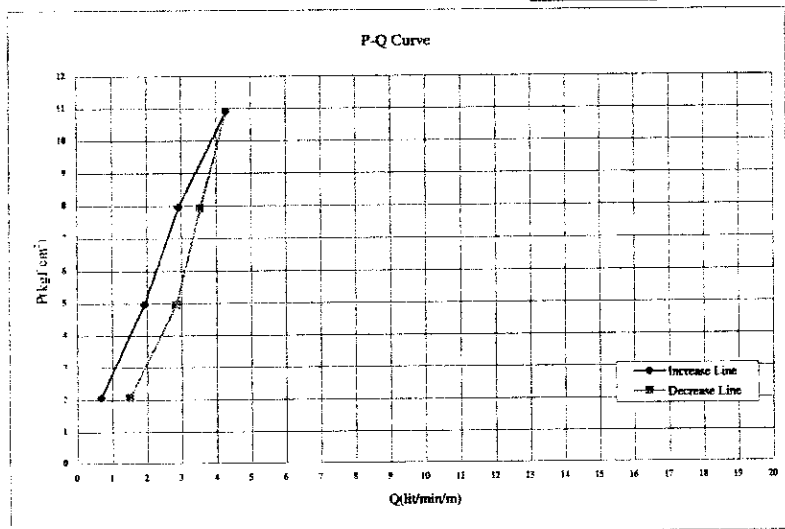
L <sub>u</sub> =	-	P <sub>c</sub> =	-
L <sub>u</sub> '=	4.0		

BH TD-3, 110-115m

Project	WRDMM	Bore Hole No.	BH TD-3	Date	7/11/2002
Depth (m)	( 110.00 - 115.00 )	Test Length (m)	5.00	Hole Radius (cm)	3.50
G.W.L. before day's work (m)	16.70	Pressure gauge height (m) : C/100	0.20		
G.W.L. before testing (m) : B/100	10.50	Packer NQ size (cm)	7.00 NQ		
Length (m) and Diameter (cm) of Rod	111.00 m	2.54 cm (φ)			
Length (m) and Diameter (cm) of Hose	8.00 m	2.54 cm (φ)			

Pressure gauge Reading : A/1000 (kg/cm <sup>2</sup> )	Water Injection (l/min)					Average of Water Injection : q (l/min)	Water Injection for 1 m : Q (l/min/m)	Water Pressure in Head (cm)			Effective Pressure : P (kg/cm <sup>2</sup> )
	1	2	3	4	5			H=A+B+C-Hf			
	6	7	8	9	10			H	A+B+C	Hf	
1.0	6	6	5	4	6	5.13	1.03	2070	2070	0	2.07
	5	5	6	4	4						
4.0	13	13	12	13	13	12.88	2.58	4950	5070	120	4.95
	14	14	13	12	12						
7.0	28	28	27	27	27	26.88	5.38	7800	8070	270	7.80
	26	27	26	27	26						
10.0	32	33	33	32	33	32.63	6.53	10760	11070	310	10.76
	32	33	33	32	33						
7.0	21	21	21	22	22	21.38	4.28	7910	8070	160	7.91
	22	21	22	21	21						
4.0	10	10	11	10	11	10.13	2.03	4980	5070	90	4.98
	10	10	10	10	10						
1.0	4	4	3	3	4	3.63	0.73	2070	2070	0	2.07
	4	3	4	4	3						

L <sub>u</sub> =	-	P <sub>c</sub> =	5.00
L <sub>u</sub> '=	5.3		



Q2-77

RECORD OF WATER PRESSURE TEST

BH TD-3, 115 (20)

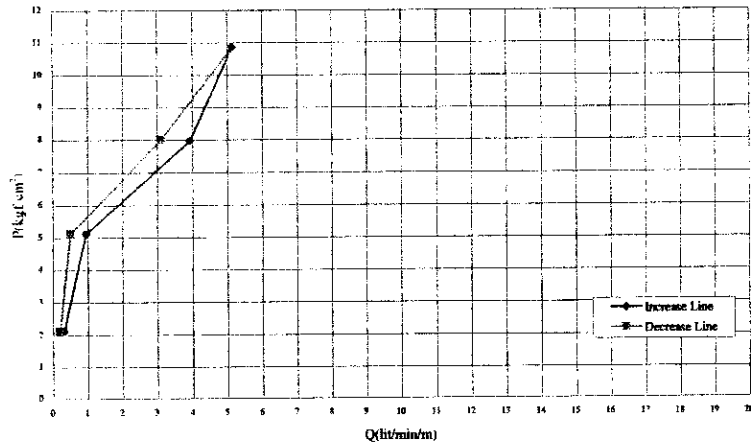
Project	WRDMM	Bore Hole No.	BH TD-3	Date	7/12/2002
Depth (m)	( 115.00 - 120.00 )	Test Length (m)	5.00	Hole Radius (cm)	3.50
G.W.L. before day's work (m)	16.60	Pressure gauge height (m) : C/100	0.20		
G.W.L. before testing (m) : B/100	11.00	Packer NQ size (cm)	7.00 NQ		
Length (m) and Diameter (cm) of Rod	116.00 m	2.54 cm (φ)			
Length (m) and Diameter (cm) of Hose	8.00 m	2.54 cm (φ)			

Pressure gauge Reading : A/1000 (kgf/cm <sup>2</sup> )	Water Injection (l/min)					Average of Water Injection : q (l/min)	Water Injection for 1 m : Q (l/min/m)	Water Pressure in Head (cm)			Effective Pressure : P (kgf/cm <sup>2</sup> )
	1	2	3	4	5			H	A+B+C	Hf	
	6	7	8	9	10						
1.0	2	2	1	2	2	1.63	0.33	2120	2120	0	2.12
4.0	4	8	5	4	4	4.75	0.95	5120	5120	0	5.12
7.0	19	19	20	20	21	19.63	3.93	7960	8120	160	7.96
10.0	28	25	25	25	25	25.75	5.15	10670	11120	250	10.87
7.0	15	16	15	16	16	15.50	3.10	8000	8120	120	8.00
4.0	3	3	4	3	2	2.50	0.50	5120	5120	0	5.12
1.0	0	1	1	1	1	1.00	0.20	2120	2120	0	2.12

Lu= - Pc= 5.10  
Lu= 2.0

P-Q Curve



BH TD-3, 120 (20)

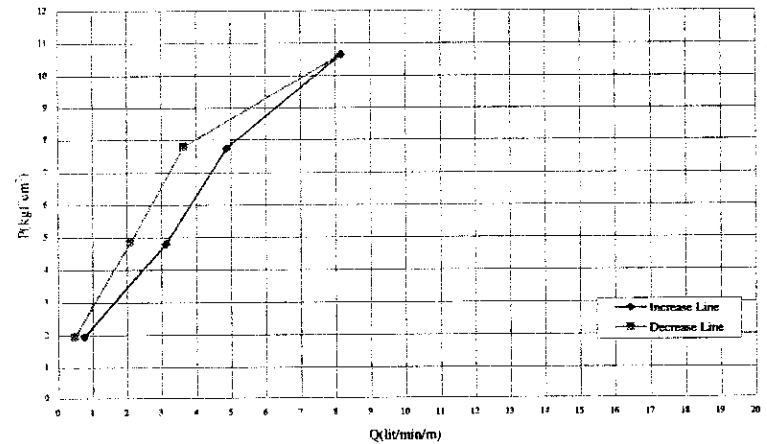
Project	WRDMM	Bore Hole No.	BH TD-3	Date	7/13/2002
Depth (m)	( 120.00 - 125.00 )	Test Length (m)	5.00	Hole Radius (cm)	3.50
G.W.L. before day's work (m)	16.50	Pressure gauge height (m) : C/100	0.20		
G.W.L. before testing (m) : B/100	9.30	Packer NQ size (cm)	7.00 NQ		
Length (m) and Diameter (cm) of Rod	121.00 m	2.54 cm (φ)			
Length (m) and Diameter (cm) of Hose	8.00 m	2.54 cm (φ)			

Pressure gauge Reading : A/1000 (kgf/cm <sup>2</sup> )	Water Injection (l/min)					Average of Water Injection : q (l/min)	Water Injection for 1 m : Q (l/min/m)	Water Pressure in Head (cm)			Effective Pressure : P (kgf/cm <sup>2</sup> )
	1	2	3	4	5			H	A+B+C	Hf	
	6	7	8	9	10						
1.0	4	4	3	3	4	3.75	0.75	1950	1950	0	1.95
4.0	16	16	17	15	17	15.63	3.13	4810	4950	140	4.81
7.0	21	25	25	24	24	24.38	4.88	7740	7950	210	7.74
10.0	40	41	41	40	41	40.88	8.18	10650	10950	300	10.65
7.0	18	19	19	18	18	18.25	3.65	7790	7950	160	7.79
4.0	10	10	11	10	11	10.50	2.10	4850	4950	100	4.85
1.0	3	2	2	2	2	2.38	0.48	1950	1950	0	1.95

Lu= - Pc= 9.80  
Lu= 7.4

P-Q Curve



G2-78

RECORD OF WATER PRESSURE TEST

BH TD-3 1/8 1966

Project	WRDMM	Bore Hole No.	BH TD-3	Date	7/17/2002
Depth (m)	( 125.00 - 130.00 )	Test Length (m)	5.00	Hole Radius (cm)	3.50
G.W.L. before day's work (m)	16.70	Pressure gauge height (m) : C/100	0.20		
G.W.L. before testing (m) : B/100	11.50	Packer NQ size (cm)	7.00	NQ	
Length (m) and Diameter (cm) of Rod	126.80 m	2.54	cm ( $\phi$ )		
Length (m) and Diameter (cm) of Hose	8.00 m	2.54	cm ( $\phi$ )		

Pressure gauge Reading : A/1000 (kg/cm <sup>2</sup> )	Water Injection (l/min)					Average of Water Injection : q (l/min)	Water Injection for 1 m : Q (l/min/m)	Water Pressure in Head (cm)			Effective Pressure : P (kg/cm <sup>2</sup> )
	1	2	3	4	5			H	A+B+C	Hf	
	6	7	8	9	10						
1.0	4	3	4	3	4	3.50	0.70	2170	2170	0	2.17
4.0	15	15	14	15	14	14.25	2.85	5050	5170	120	5.05
7.0	21	21	20	20	21	20.50	4.10	8010	8170	160	8.01
10.0	32	35	35	32	32	33.50	6.70	10850	11170	320	10.85
7.0	15	15	16	17	17	16.38	3.28	8040	8170	130	8.04
4.0	12	12	11	11	12	11.13	2.23	5070	5170	100	5.07
1.0	2	2	3	2	2	2.00	0.40	2170	2170	0	2.17

Lp=	-	Pc=	-
Lq=	6.6		

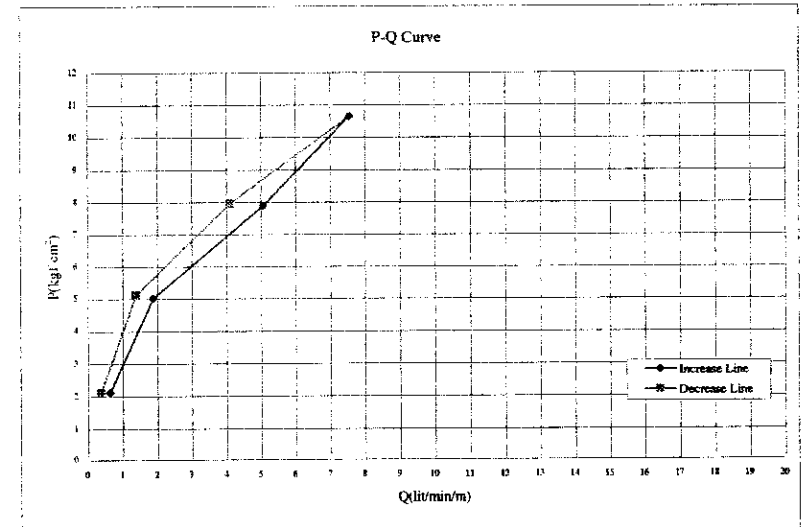
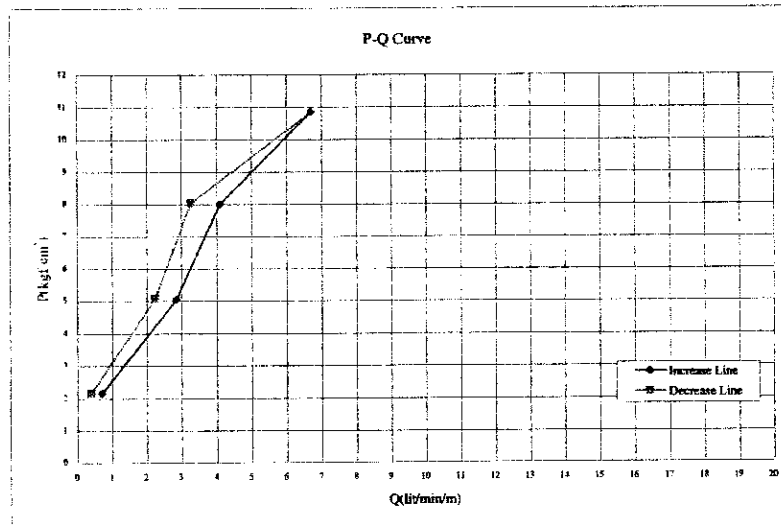
BH TD-3 1/8 1966

Project	WRDMM	Bore Hole No.	BH TD-3	Date	7/18/2002
Depth (m)	( 130.00 - 135.00 )	Test Length (m)	5.00	Hole Radius (cm)	3.50
G.W.L. before day's work (m)	16.70	Pressure gauge height (m) : C/100	0.20		
G.W.L. before testing (m) : B/100	11.00	Packer NQ size (cm)	7.00	NQ	
Length (m) and Diameter (cm) of Rod	131.00 m	2.54	cm ( $\phi$ )		
Length (m) and Diameter (cm) of Hose	8.00 m	2.54	cm ( $\phi$ )		

Pressure gauge Reading : A/1000 (kg/cm <sup>2</sup> )	Water Injection (l/min)					Average of Water Injection : q (l/min)	Water Injection for 1 m : Q (l/min/m)	Water Pressure in Head (cm)			Effective Pressure : P (kg/cm <sup>2</sup> )
	1	2	3	4	5			H	A+B+C	Hf	
	6	7	8	9	10						
1.0	4	4	3	3	3	3.13	0.63	2120	2120	0	2.12
4.0	9	12	10	9	9	9.38	1.88	5020	5120	100	5.02
7.0	25	26	26	26	27	25.38	5.08	7900	8120	220	7.90
10.0	40	38	38	38	37	37.75	7.55	10640	11120	480	10.64
7.0	38	37	38	37	38	37.50	4.10	7960	8120	160	7.96
4.0	20	20	21	21	21	20.50	4.10	7960	8120	160	7.96
1.0	6	8	8	8	7	6.88	1.38	5120	5120	0	5.12
	2	2	1	2	2	1.88	0.38	2120	2120	0	2.12

Lp=	-	Pc=	5/00
Lq=	4.0		

Q2-79





RECORD OF WATER PRESSURE TEST

BU TD-3, 140-140m

Project	WRDMM	Bore Hole No.	BH TD-3	Date	7/18/2002
Depth (m)	( 135.00 - 140.00 )	Test Length (m)	5.00	Hole Radius (cm)	3.50
G.W.L. before day's work (m)	16.50	Pressure gauge height (m) : C/100	0.20		
G.W.L. before testing (m) : B/100	10.50	Packer NQ size (cm)	7.00	NQ	
Length (m) and Diameter (cm) of Rod	136.00 m	2.54	cm (φ)		
Length (m) and Diameter (cm) of Hose	8.00 m	2.54	cm (φ)		

Pressure gauge Reading : A/1000 (kgf/cm <sup>2</sup> )	Water Injection (l/min)					Average of Water Injection : q (l/min)	Water Injection for 1 m : Q (l/min/m)	Water Pressure in Head (cm)			Effective Pressure : P (kgf/cm <sup>2</sup> )
	1	2	3	4	5			H=A+B+C-Hf			
	6	7	8	9	10			H	A+B+C	Hf	
1.0	2	2	1	2	2	1.88	0.38	2070	2070	0	2.07
4.0	8	8	9	8	7	7.50	1.50	5070	5070	0	5.07
7.0	14	15	14	15	14	14.63	2.93	7940	8070	130	7.94
10.0	15	15	14	15	15	22.75	4.55	10870	11070	200	10.87
7.0	19	17	19	19	19	18.75	3.75	7930	8070	140	7.93
4.0	12	13	12	13	13	12.50	2.50	4960	5070	110	4.96
1.0	4	4	3	4	4	3.88	0.78	2070	2070	0	2.07

Lu= - Pc= 6.00  
Lu= 3.3

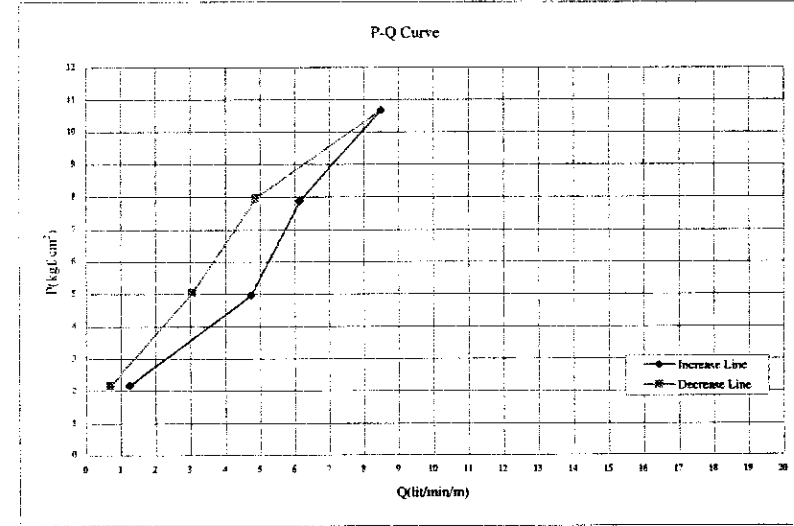
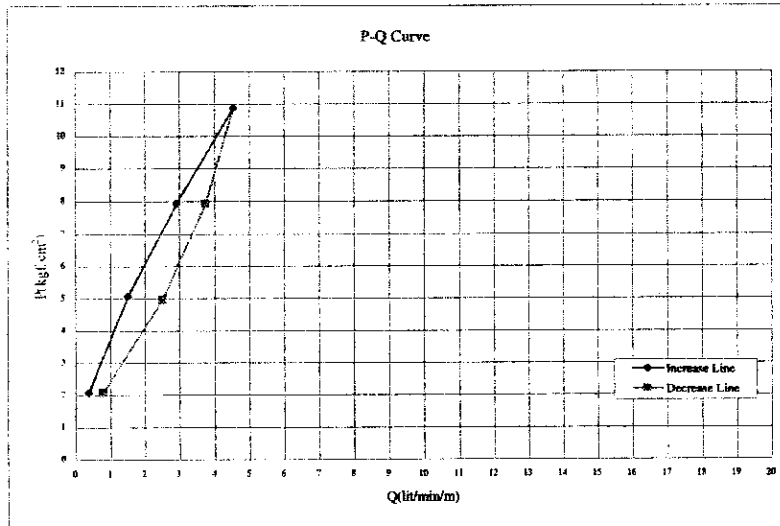
BU TD-3, 140-140m

Project	WRDMM	Bore Hole No.	BH TD-3	Date	7/26/2002
Depth (m)	( 140.00 - 145.00 )	Test Length (m)	5.00	Hole Radius (cm)	3.50
G.W.L. before day's work (m)	16.80	Pressure gauge height (m) : C/100	0.20		
G.W.L. before testing (m) : B/100	11.50	Packer NQ size (cm)	7.00	NQ	
Length (m) and Diameter (cm) of Rod	141.00 m	2.54	cm (φ)		
Length (m) and Diameter (cm) of Hose	8.00 m	2.54	cm (φ)		

Pressure gauge Reading : A/1000 (kgf/cm <sup>2</sup> )	Water Injection (l/min)					Average of Water Injection : q (l/min)	Water Injection for 1 m : Q (l/min/m)	Water Pressure in Head (cm)			Effective Pressure : P (kgf/cm <sup>2</sup> )
	1	2	3	4	5			H=A+B+C-Hf			
	6	7	8	9	10			H	A+B+C	Hf	
1.0	6	6	7	6	6	6.25	1.25	2170	2170	0	2.17
4.0	7	7	6	6	6	23.75	4.75	4970	5170	200	4.97
7.0	24	24	23	23	24	31	30	31	31	31	7.87
10.0	30	31	31	30	31	40	45	42	42	42	10.67
7.0	42	42	44	43	43	25	24	25	24	24	7.96
4.0	24	24	24	24	25	15	15	16	15	15	5.05
1.0	4	4	4	4	3	3.50	0.70	2170	2170	0	2.17

Lu= - Pc= -  
Lu= 11.0

G2-80



RECORD OF WATER PRESSURE TEST

Project	WRDMM	Bore Hole No.	BH TD-3	Date	7/27/2002
Depth (m)	( 145.00 - 150.00 )	Test Length (m)	5.00	Hole Radius (cm)	3.50
G.W.L. before day's work (m)	17.10	Pressure gauge height (m) : C/100	0.20		
G.W.L. before testing (m) : B/100	11.00	Packer NQ size (cm)	7.00 NQ		
Length (m) and Diameter (cm) of Rod	146.00 m	2.54 cm (φ)			
Length (m) and Diameter (cm) of Hose	8.00 m	2.54 cm (φ)			

Pressure gauge Reading : A/1000 (kgf/cm <sup>2</sup> )	Water Injection (l/min)					Average of Water Injection : q (l/min)	Water Injection for 1 m : Q (l/min/m)	Water Pressure in Head (cm)			Effective Pressure : P (kgf/cm <sup>2</sup> )
	1	2	3	4	5			H=A+B+C-Hf			
	6	7	8	9	10			H	A+B+C	Hf	
1.0	2	2	3	3	2	2.63	0.53	2120	2120	0	2.12
4.0	10	10	11	11	10	10.38	2.08	5040	5120	80	5.04
7.0	16	16	17	17	17	16.38	3.28	7980	8120	140	7.98
10.0	28	28	28	27	28	27.75	5.55	10840	11120	280	10.84
7.0	20	20	19	19	20	19.75	3.95	7970	8120	150	7.97
4.0	12	12	12	12	13	12.38	2.48	5020	5120	100	5.02
1.0	4	4	4	5	4	4.25	0.85	2120	2120	0	2.12

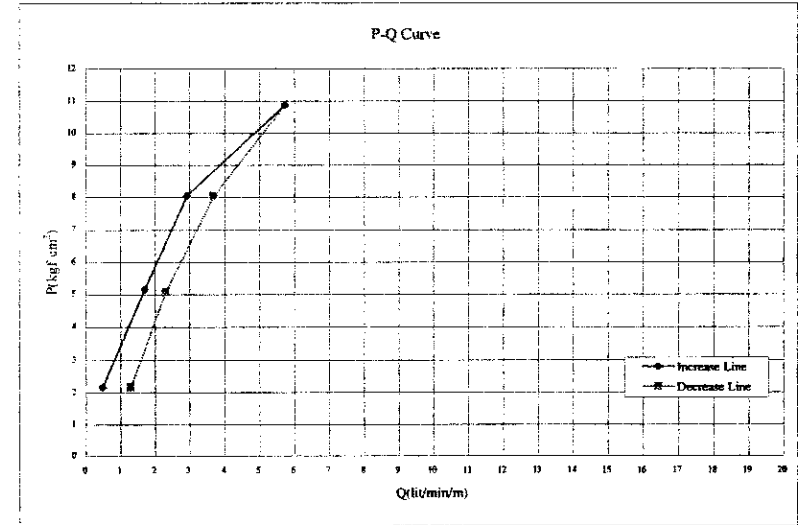
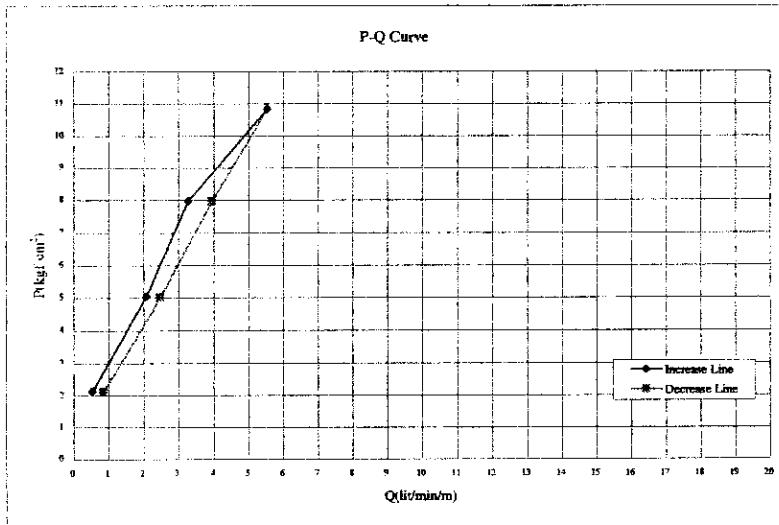
L <sub>1</sub> =	-	P <sub>c</sub> =	9.40
L <sub>2</sub> =	4.7		

Project	WRDMM	Bore Hole No.	BH TD-3	Date	7/30/2002
Depth (m)	( 150.00 - 155.00 )	Test Length (m)	5.00	Hole Radius (cm)	3.50
G.W.L. before day's work (m)	16.80	Pressure gauge height (m) : C/100	0.20		
G.W.L. before testing (m) : B/100	11.50	Packer NQ size (cm)	7.00 NQ		
Length (m) and Diameter (cm) of Rod	151.00 m	2.54 cm (φ)			
Length (m) and Diameter (cm) of Hose	8.00 m	2.54 cm (φ)			

Pressure gauge Reading : A/1000 (kgf/cm <sup>2</sup> )	Water Injection (l/min)					Average of Water Injection : q (l/min)	Water Injection for 1 m : Q (l/min/m)	Water Pressure in Head (cm)			Effective Pressure : P (kgf/cm <sup>2</sup> )
	1	2	3	4	5			H=A+B+C-Hf			
	6	7	8	9	10			H	A+B+C	Hf	
1.0	2	2	3	3	2	2.38	0.48	2170	2170	0	2.17
4.0	8	8	8	9	8	8.50	1.70	5170	5170	0	5.17
7.0	14	15	15	14	15	14.63	2.93	8050	8170	120	8.05
10.0	30	28	29	29	29	28.63	5.73	10870	11170	300	10.87
7.0	28	29	29	28	28	28.63	5.73	10870	11170	300	10.87
4.0	18	18	19	19	19	18.50	3.70	8040	8170	130	8.04
1.0	6	6	7	7	6	6.50	1.30	2170	2170	0	2.17

L <sub>1</sub> =	-	P <sub>c</sub> =	8.00
L <sub>2</sub> =	3.7		

G2-81



RECORD OF WATER PRESSURE TEST

BH TD-3, 155-155m

Project	WRDMM	Bore Hole No.	BH TD-3	Date	7/30/2002
Depth (m)	( 155.00 - 160.40 )	Test Length (m)	5.00	Hole Radius (cm)	3.50
G.W.L. before day's work (m)	16.80	Pressure gauge height (m) : C/100	0.20		
G.W.L. before testing (m) : B/100	11.00	Packer NQ size (cm)	7.00	NQ	
Length (m) and Diameter (cm) of Rod	156.00 m	2.54	cm ( φ )		
Length (m) and Diameter (cm) of Hose	8.00 m	2.54	cm ( φ )		

Pressure gauge Reading : A/1000 (kgf/cm <sup>2</sup> )	Water Injection (l/min)					Average of Water Injection : q (l/min)	Water Injection for 1 m : Q (l/min/m)	Water Pressure in Head (cm) H=A+B+C-Hf			Effective Pressure : P (kgf/cm <sup>2</sup> )
	1	2	3	4	5			H	A+B+C	Hf	
1.0	4	4	3	3	3	3.25	0.65	2120	2120	0	2.12
4.0	12	15	15	16	15	14.62	2.93	5000	5120	120	5.00
7.0	28	27	28	27	26	27.38	5.48	7870	8120	250	7.87
10.0	39	38	38	38	38	38.38	7.68	10620	11120	500	10.62
7.0	21	21	21	20	20	20.38	4.08	7960	8120	160	7.96
4.0	10	10	10	11	10	10.25	2.05	5020	5120	100	5.02
1.0	2	2	2	3	2	2.13	0.43	2120	2120	0	2.12

Lu= 7.1 Pc= -  
Lu'= -

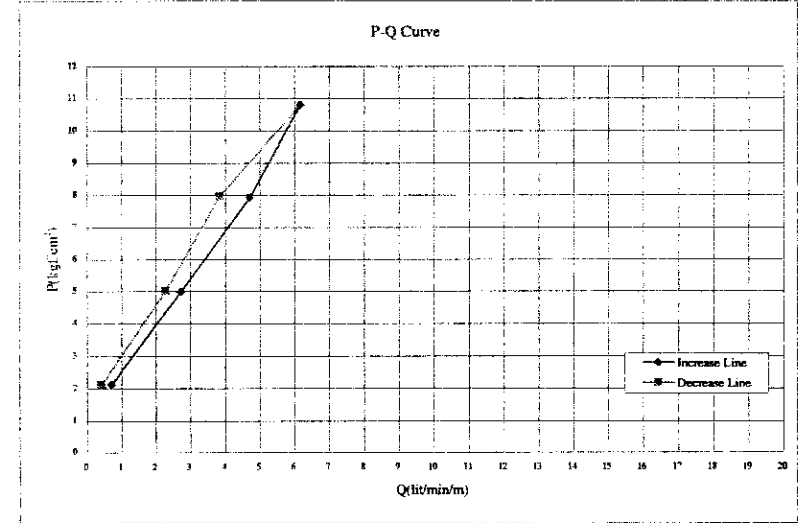
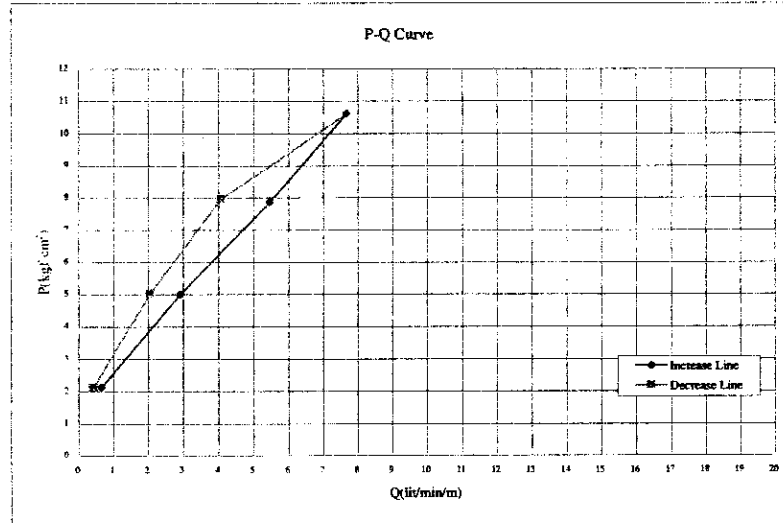
BH TD-3, 156-156m

Project	WRDMM	Bore Hole No.	BH TD-3	Date	7/31/2002
Depth (m)	( 160.00 - 165.00 )	Test Length (m)	5.00	Hole Radius (cm)	3.50
G.W.L. before day's work (m)	16.50	Pressure gauge height (m) : C/100	0.20		
G.W.L. before testing (m) : B/100	11.00	Packer NQ size (cm)	7.00	NQ	
Length (m) and Diameter (cm) of Rod	161.00 m	2.54	cm ( φ )		
Length (m) and Diameter (cm) of Hose	8.00 m	2.54	cm ( φ )		

Pressure gauge Reading : A/1000 (kgf/cm <sup>2</sup> )	Water Injection (l/min)					Average of Water Injection : q (l/min)	Water Injection for 1 m : Q (l/min/m)	Water Pressure in Head (cm) H=A+B+C-Hf			Effective Pressure : P (kgf/cm <sup>2</sup> )
	1	2	3	4	5			H	A+B+C	Hf	
1.0	3	4	4	4	3	3.50	0.70	2120	2120	0	2.12
4.0	14	14	13	14	14	13.63	2.73	4990	5120	130	4.99
7.0	24	24	24	23	24	23.62	4.73	7920	8120	200	7.92
10.0	31	31	32	32	31	30.88	6.18	10810	11120	310	10.81
7.0	19	19	20	20	19	19.25	3.85	7960	8120	160	7.96
4.0	12	11	11	11	12	11.38	2.28	5020	5120	100	5.02
1.0	2	2	2	3	2	2.13	0.43	2120	2120	0	2.12

Lu= - Pc= -  
Lu'= 6.1

G2-82



RECORD OF WATER PRESSURE TEST

WI TD-3, 166-176

Project	WRDMM	Bore Hole No.	BH TD-3	Date	8/2/2002
Depth (m)	( 165.00 - 170.00 )	Test Length (m)	5.00	Hole Radius (cm)	3.50
G.W.L. before day's work (m)	16.50	Pressure gauge height (m) : C/100	0.20		
G.W.L. before testing (m) : B/100	11.50	Packer NQ size (cm)	7.00	NQ	
Length (m) and Diameter (cm) of Rod	166.00 m	2.54	cm (φ)		
Length (m) and Diameter (cm) of Hose	8.00 m	2.54	cm (φ)		

Pressure gauge Reading : A/1000 (kg/cm <sup>2</sup> )	Water Injection (l/min)					Average of Water Injection : q (l/min)	Water Injection for 1 m : Q (l/min/m)	Water Pressure in Head (cm)			Effective Pressure : P (kg/cm <sup>2</sup> )
	1	2	3	4	5			H	A+B+C	Hf	
	6	7	8	9	10						
1.0	4	4	3	3	4	3.63	0.73	2170	2170	0	2.17
4.0	11	10	11	10	11	10.63	2.13	5070	5170	100	5.07
7.0	19	19	18	19	19	18.75	3.75	8010	8170	160	8.01
10.0	24	24	25	25	24	24.50	4.90	10910	11170	260	10.91
7.0	15	16	16	15	15	15.25	3.05	8020	8170	150	8.02
4.0	8	8	9	8	8	8.13	1.63	5170	5170	0	5.17
1.0	2	2	1	2	2	1.88	0.38	2170	2170	0	2.17

Lu=	-	Pc=	5.10
Lu=	4.5		

WI TD-3, 176-176

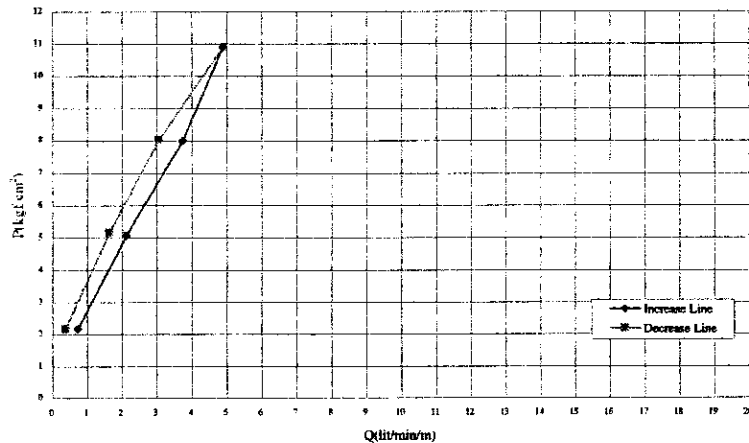
Project	WRDMM	Bore Hole No.	BH TD-3	Date	8/3/2002
Depth (m)	( 170.00 - 175.00 )	Test Length (m)	5.00	Hole Radius (cm)	3.50
G.W.L. before day's work (m)	16.40	Pressure gauge height (m) : C/100	0.20		
G.W.L. before testing (m) : B/100	11.50	Packer NQ size (cm)	7.00	NQ	
Length (m) and Diameter (cm) of Rod	171.00 m	2.54	cm (φ)		
Length (m) and Diameter (cm) of Hose	8.00 m	2.54	cm (φ)		

Pressure gauge Reading : A/1000 (kg/cm <sup>2</sup> )	Water Injection (l/min)					Average of Water Injection : q (l/min)	Water Injection for 1 m : Q (l/min/m)	Water Pressure in Head (cm)			Effective Pressure : P (kg/cm <sup>2</sup> )
	1	2	3	4	5			H	A+B+C	Hf	
	6	7	8	9	10						
1.0	2	1	2	2	1	1.63	0.33	2170	2170	0	2.17
4.0	6	7	8	8	7	7.38	1.48	5170	5170	0	5.17
7.0	14	14	13	14	14	14.25	2.85	8060	8170	110	8.06
10.0	21	22	21	22	22	21.63	4.33	11010	11170	160	11.01
7.0	17	17	18	18	17	17.50	3.50	8040	8170	130	8.04
4.0	12	12	11	11	12	11.63	2.33	5070	5170	100	5.07
1.0	4	3	4	4	4	3.88	0.78	2170	2170	0	2.17

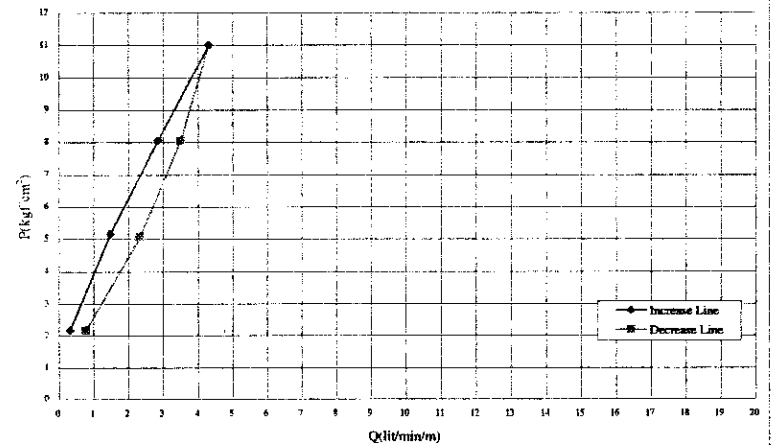
Lu=	-	Pc=	5.10
Lu=	3.3		

G2-83

P-Q Curve



P-Q Curve



RECORD OF WATER PRESSURE TEST

BH TD-3, 17-1964

Project	WRDMM	Bore Hole No.	BH TD-3	Date	8/10/2002
Depth (m)	( 175.00 - 180.00 )	Test Length (m)	5.00	Hole Radius (cm)	3.50
G.W.L. before day's work (m)	16.50	Pressure gauge height (m) : C/100	0.20		
G.W.L. before testing (m) : B/100	11.50	Packer NQ size (cm)	7.00 NQ		
Length (m) and Diameter (cm) of Rod	175.00 m	2.54 cm (φ)			
Length (m) and Diameter (cm) of Hose	8.00 m	2.54 cm (φ)			

Pressure gauge Reading : A/1000 (kg/cm <sup>2</sup> )	Water Injection (l/min)					Average of Water Injection : q (l/min)	Water Injection for 1 m : Q (l/min/m)	Water Pressure in Head (cm)			Effective Pressure : P (kg/cm <sup>2</sup> )
	1	2	3	4	5			H	A+B+C	Hf	
1.0	4	4	2	4	3	3.63	0.73	2170	2170	0	2.17
4.0	8	8	8	9	8	8.25	1.65	5170	5170	0	5.17
7.0	18	17	17	15	15	15.63	3.13	8050	8170	120	8.05
10.0	24	24	24	24	23	23.75	4.75	10940	11170	230	10.94
7.0	19	19	19	20	19	19.25	3.85	8020	8170	150	8.02
4.0	12	13	13	12	12	12.50	2.50	5060	5170	110	5.06
1.0	6	6	6	6	6	6.50	1.30	2170	2170	0	2.17

Lu= - Pc= 5.10  
Lu= 3.2

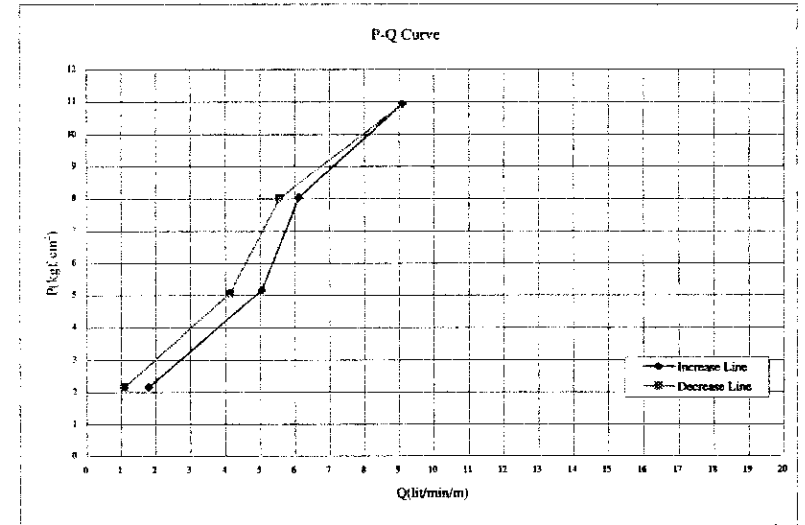
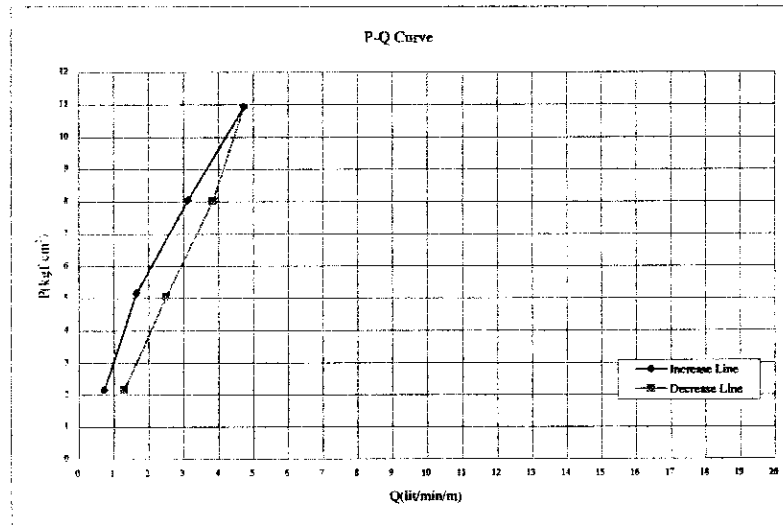
G2-84

BH TD-3, 140-1964

Project	WRDMM	Bore Hole No.	BH TD-3	Date	8/16/2002
Depth (m)	( 180.00 - 185.00 )	Test Length (m)	5.00	Hole Radius (cm)	3.50
G.W.L. before day's work (m)	16.80	Pressure gauge height (m) : C/100	0.20		
G.W.L. before testing (m) : B/100	11.50	Packer NQ size (cm)	7.00 NQ		
Length (m) and Diameter (cm) of Rod	181.00 m	2.54 cm (φ)			
Length (m) and Diameter (cm) of Hose	8.00 m	2.54 cm (φ)			

Pressure gauge Reading : A/1000 (kg/cm <sup>2</sup> )	Water Injection (l/min)					Average of Water Injection : q (l/min)	Water Injection for 1 m : Q (l/min/m)	Water Pressure in Head (cm)			Effective Pressure : P (kg/cm <sup>2</sup> )
	1	2	3	4	5			H	A+B+C	Hf	
1.0	10	9	9	8	9	9.00	1.80	2170	2170	0	2.17
4.0	26	25	26	25	25	25.25	5.05	5170	5170	0	5.17
7.0	31	30	31	31	30	30.63	6.13	8050	8170	120	8.05
10.0	47	45	45	47	45	45.50	9.10	10940	11170	230	10.94
7.0	28	28	27	28	28	27.88	5.58	8020	8170	150	8.02
4.0	21	21	20	21	21	20.63	4.13	5060	5170	110	5.06
1.0	5	6	5	6	6	5.50	1.10	2170	2170	0	2.17

Lu= - Pc= -  
Lu= 10.2



RECORD OF WATER PRESSURE TEST

BH TD-3, 186-190m

Project	WRDMM	Bore Hole No.	BH TD-3	Date	8/17/2002
Depth (m)	( 186.00 - 196.00 )	Test Length (m)	5.00	Hole Radius (cm)	3.50
G.W.L. before day's work (m)	16.50	Pressure gauge height (m) : C/100	0.20		
G.W.L. before testing (m) : B/100	11.50	Packer NQ size (cm)	7.00	NQ	
Length (m) and Diameter (cm) of Rod	186.00 m	2.54	cm (φ)		
Length (m) and Diameter (cm) of Hose	8.00 m	2.54	cm (φ)		

Pressure gauge Reading : A/1000 (kg/cm <sup>2</sup> )	Water Injection (l/min)					Average of Water Injection : q (l/min)	Water Injection for 1 m : Q (l/min/m)	Water Pressure in Head (cm)			Effective Pressure : P (kg/cm <sup>2</sup> )
	1	2	3	4	5			H	A+B+C	Hf	
	6	7	8	9	10						
1.0	10	12	12	12	12	11.13	2.23	2070	2170	100	2.07
4.0	26	26	27	27	27	27.25	5.45	4870	5170	300	4.87
7.0	36	36	37	37	37	37.38	7.48	7770	8170	400	7.77
10.0	47	46	47	48	48	46.88	9.38	10520	11170	650	10.52
7.0	31	30	31	32	32	31.25	6.25	7850	8170	320	7.85
4.0	24	24	21	23	23	22.88	4.58	4890	5170	280	4.89
1.0	8	9	7	7	8	7.63	1.53	2170	2170	0	2.17

Lu=	-	Pc=	-
Lu=	11.2		

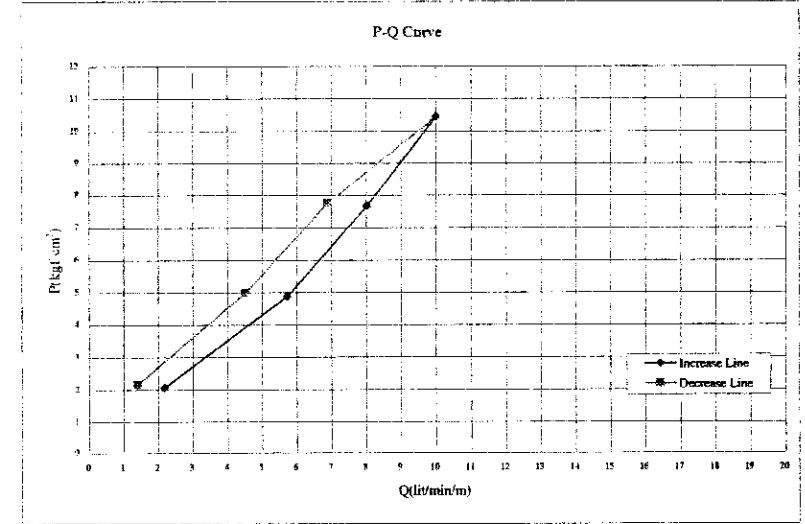
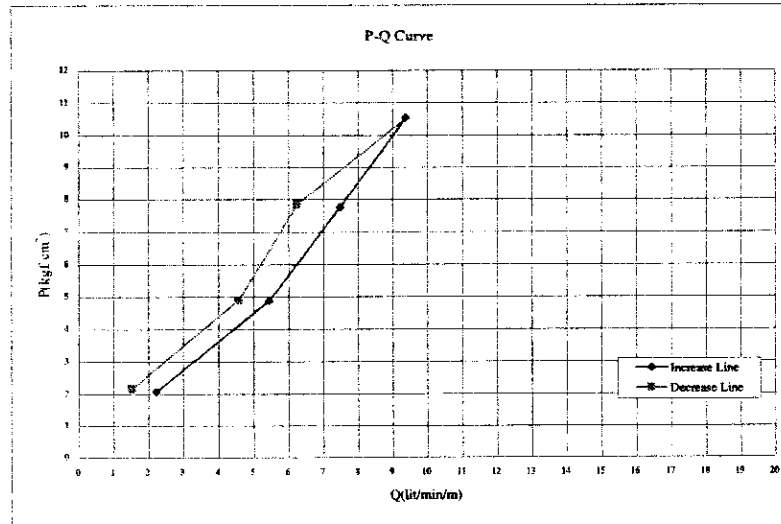
BH TD-3, 186-190m

Project	WRDMM	Bore Hole No.	BH TD-3	Date	8/19/2002
Depth (m)	( 186.00 - 196.00 )	Test Length (m)	5.00	Hole Radius (cm)	3.50
G.W.L. before day's work (m)	16.50	Pressure gauge height (m) : C/100	0.20		
G.W.L. before testing (m) : B/100	11.50	Packer NQ size (cm)	7.00	NQ	
Length (m) and Diameter (cm) of Rod	186.00 m	2.54	cm (φ)		
Length (m) and Diameter (cm) of Hose	8.00 m	2.54	cm (φ)		

Pressure gauge Reading : A/1000 (kg/cm <sup>2</sup> )	Water Injection (l/min)					Average of Water Injection : q (l/min)	Water Injection for 1 m : Q (l/min/m)	Water Pressure in Head (cm)			Effective Pressure : P (kg/cm <sup>2</sup> )
	1	2	3	4	5			H	A+B+C	Hf	
	6	7	8	9	10						
1.0	10	11	11	12	11	10.88	2.18	2070	2170	100	2.07
4.0	29	28	28	29	29	28.63	5.73	4870	5170	300	4.87
7.0	41	40	39	39	39	40.13	8.03	7670	8170	500	7.67
10.0	50	51	51	49	50	50.00	10.00	10450	11170	720	10.45
7.0	35	35	36	34	34	34.50	6.90	7770	8170	400	7.77
4.0	21	24	23	23	23	22.63	4.52	4990	5170	180	4.99
1.0	8	7	6	6	6	7.00	1.40	2170	2170	0	2.17

Lu=	-	Pc=	-
Lu=	12.1		

G2-85



RECORD OF WATER PRESSURE TEST

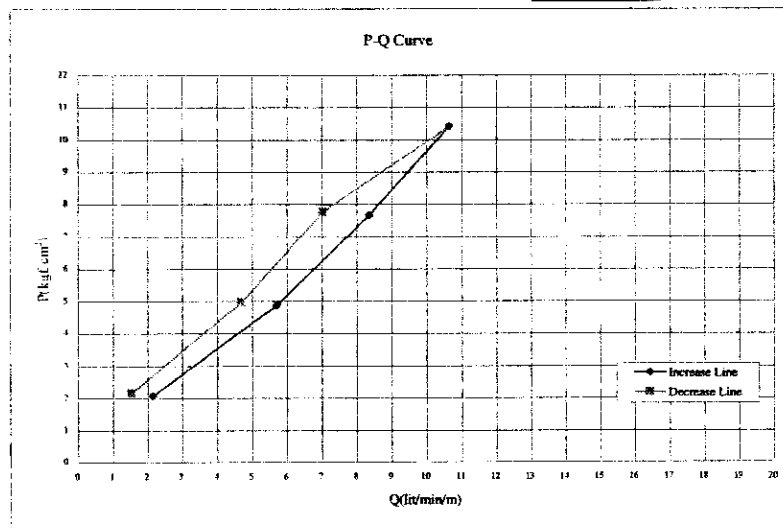
BM 70-1, 705-278

Project	WRDMM	Bore Hole No.	BH TD-3	Date	8/20/2002
Depth (m)	( 195.00 - 200.00 )	Test Length (m)	5.00	Hole Radius (cm)	3.50
G.W.L. before day's work (m)	16.50	Pressure gauge height (m) : C/100			0.20
G.W.L. before testing (m) : B/100	11.50	Packer NQ size (cm)			7.00 NQ
Length (m) and Diameter (cm) of Rod	196.00 m	2.54 cm (φ)			
Length (m) and Diameter (cm) of Hose	8.00 m	2.54 cm (φ)			

Pressure gauge Reading : A/1000 (kgf/cm <sup>2</sup> )	Water Injection (l/min)					Average of Water Injection : q (l/min)	Water Injection for 1 m : Q (l/min/m)	Water Pressure in Head (cm)			Effective Pressure : P (kgf/cm <sup>2</sup> )
	1	2	3	4	5			H	A+B+C	Hf	
1.0	12	11	10	11	11	10.75	2.15	2070	2170	100	2.07
	10	11	10	11	11						
4.0	30	28	28	29	28	28.50	5.70	4870	5170	300	4.87
	28	29	29	29	28						
7.0	42	41	42	43	43	41.75	8.35	7670	8170	500	7.67
	43	41	41	41	41						
10.0	53	54	53	53	56	53.25	10.65	10020	11170	750	10.42
	53	53	53	53	54						
7.0	36	35	35	35	35	35.13	7.03	7770	8170	400	7.77
	34	35	35	35	36						
4.0	24	24	22	24	23	23.50	4.70	4970	5170	200	4.97
	23	24	22	24	24						
1.0	8	9	8	8	7	7.63	1.53	2170	2170	0	2.17
	8	7	8	7	7						

L <sub>u</sub> =	-	P <sub>cu</sub> =	-
L <sub>u</sub> <sup>95</sup> =	12.1		

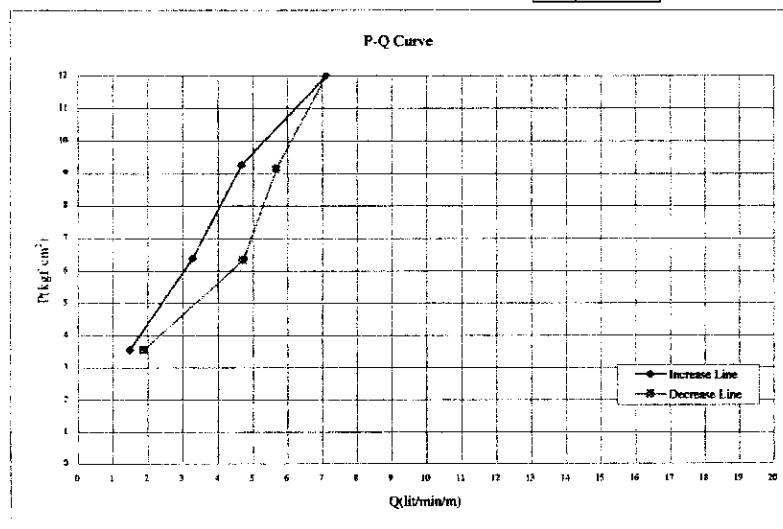
G2-86



RECORD OF WATER PRESSURE TEST

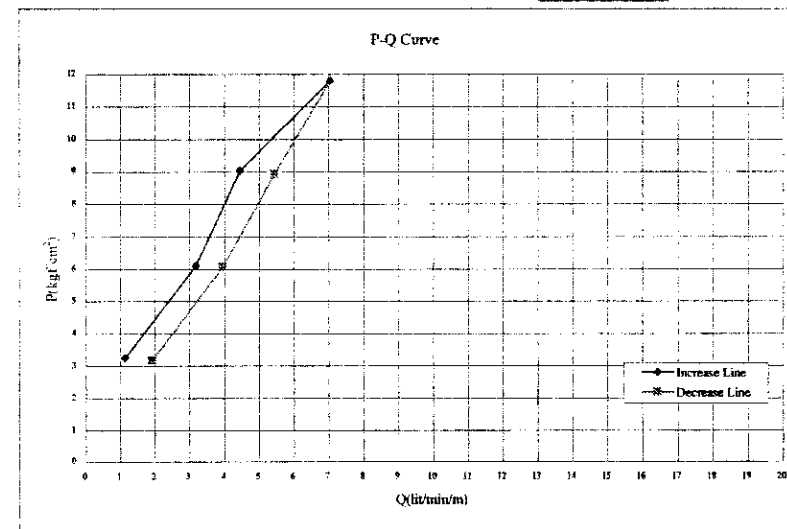
Project	WRDMM	Bore Hole No.	BH TD-4	Date	9/8/2002						
Depth (m)	( 35.00 - 40.00 )	Test Length (m)	5.00	Hole Radius (cm)	4.45						
G.W.L. before day's work (m)	30.00	Pressure gauge height (m) : C/100	0.50								
G.W.L. before testing (m) : B/100	25.00	Packer NQ size (cm)	8.90	HQ							
Length (m) and Diameter (cm) of Rod	37.00 m	2.54	cm (φ)								
Length (m) and Diameter (cm) of Hose	15.00 m	2.54	cm (φ)								
Pressure gauge Reading : A/1000 (kg/cm <sup>2</sup> )	Water Injection (l/min)					Average of Water Injection : q (l/min)	Water Injection for 1 m : Q (l/min/m)	Water Pressure in Head (cm)			Effective Pressure : P (kg/cm <sup>2</sup> )
	1	2	3	4	5			H	A+B+C	Hf	
1.0	6	7	8	9	10	7.38	1.48	3550	3550	0	3.55
4.0	16	17	16	16	17	16.38	3.28	6380	6550	170	6.38
7.0	23	24	23	24	23	23.38	4.68	9250	9550	300	9.25
10.0	36	35	36	36	35	35.63	7.13	12000	12550	550	12.00
7.0	28	29	28	28	29	28.38	5.68	9150	9550	400	9.15
4.0	23	24	24	23	24	23.63	4.73	6330	6550	220	6.33
1.0	9	10	9	9	10	9.38	1.88	3550	3550	0	3.55

Lw= 5.6 Pc= -  
Lu= -



Project	WRDMM	Bore Hole No.	BH TD-4	Date	9/8/2002						
Depth (m)	( 40.00 - 45.00 )	Test Length (m)	5.00	Hole Radius (cm)	4.45						
G.W.L. before day's work (m)	38.00	Pressure gauge height (m) : C/100	0.50								
G.W.L. before testing (m) : B/100	22.00	Packer NQ size (cm)	8.90	HQ							
Length (m) and Diameter (cm) of Rod	42.00 m	2.54	cm (φ)								
Length (m) and Diameter (cm) of Hose	15.00 m	2.54	cm (φ)								
Pressure gauge Reading : A/1000 (kg/cm <sup>2</sup> )	Water Injection (l/min)					Average of Water Injection : q (l/min)	Water Injection for 1 m : Q (l/min/m)	Water Pressure in Head (cm)			Effective Pressure : P (kg/cm <sup>2</sup> )
	1	2	3	4	5			H	A+B+C	Hf	
1.0	6	7	6	6	5	5.75	1.15	3250	3250	0	3.25
4.0	16	17	16	17	16	15.88	3.18	6110	6250	140	6.11
7.0	23	23	23	21	22	22.25	4.45	9030	9250	220	9.03
10.0	35	35	36	35	36	35.25	7.05	11800	12250	450	11.80
7.0	27	27	28	27	27	27.25	5.45	8930	9250	320	8.93
4.0	22	19	19	20	20	19.75	3.95	6070	6250	180	6.07
1.0	9	9	10	10	9	9.63	1.93	3170	3250	80	3.17

Lw= 5.9 Pc= -  
Lu= -



G2-87



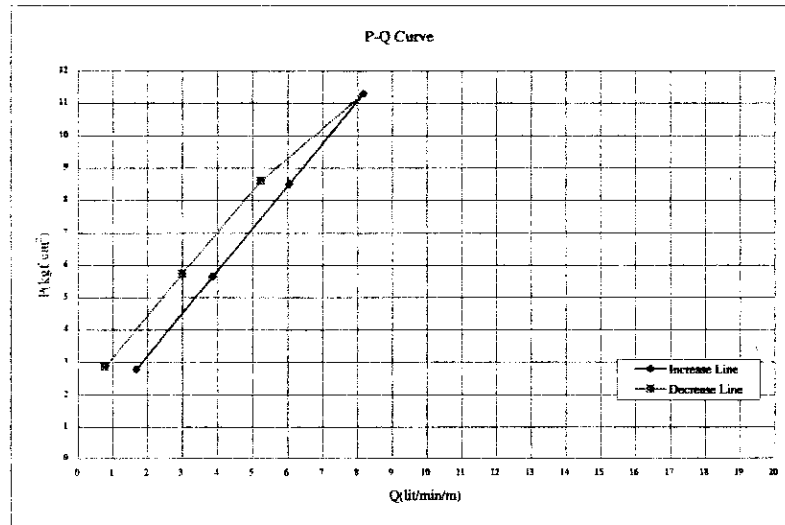
RECORD OF WATER PRESSURE TEST

Project		Bore Hole No.		Date	
WRDMM		BH TD-4		9/16/2002	
Depth (m)	( 30.00 - 30.00 )	Test Length (m)	5.00	Hole Radius (cm)	4.45
G.W.L. before day's work (m)	30.00	Pressure gauge height (m) : C/100	0.50		
G.W.L. before testing (m) : B/100	18.00	Packer NQ size (cm)	8.90	HQ	
Length (m) and Diameter (cm) of Rod	47.00 m	2.54	cm (φ)		
Length (m) and Diameter (cm) of Hose	15.00 m	2.54	cm (φ)		

Pressure gauge Reading : A/1000 (kg/cm <sup>2</sup> )	Water Injection (l/min)					Average of Water Injection : q (l/min)	Water Injection for 1 m : Q (l/min/m)	Water Pressure in Head (cm)			Effective Pressure : P (kg/cm <sup>2</sup> )
	1	2	3	4	5			H	A+B+C	Hf	
1.0	9	8	7	8	8	8.38	1.68	2770	2850	80	2.77
4.0	20	19	19	20	20	19.38	3.88	5650	5850	200	5.65
7.0	31	30	31	31	30	30.25	6.05	8500	8850	350	8.50
10.0	40	40	42	40	40	40.88	8.18	11290	11850	560	11.29
7.0	26	28	25	25	28	26.25	5.25	8600	8850	250	8.60
4.0	15	14	14	16	16	15.00	3.00	5730	5850	120	5.73
1.0	4	4	4	4	4	3.88	0.78	2850	2850	0	2.85

L<sub>u</sub>= 7.2 P<sub>c</sub>=  
L<sub>v</sub>= -

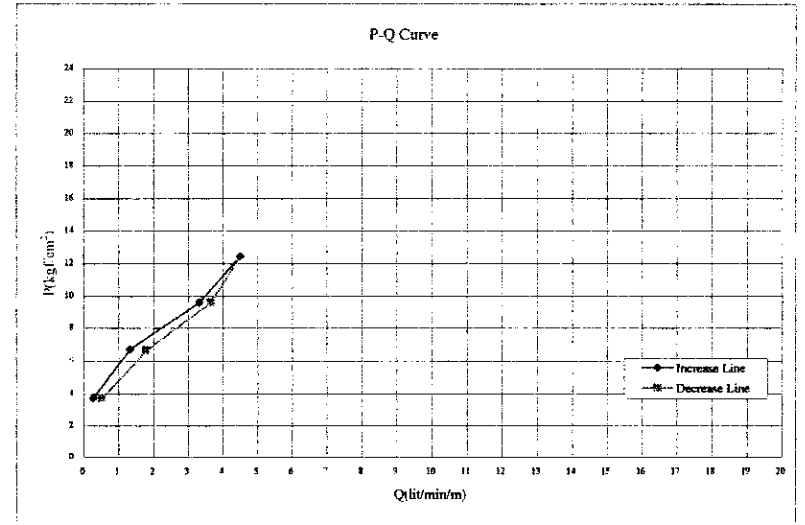


Project		Bore Hole No.		Date	
WRDMM		BH TD-4		9/16/2002	
Depth (m)	( 30.00 - 30.00 )	Test Length (m)	5.00	Hole Radius (cm)	4.45
G.W.L. before day's work (m)	42.20	Pressure gauge height (m) : C/100	0.50		
G.W.L. before testing (m) : B/100	26.80	Packer NQ size (cm)	8.90	HQ	
Length (m) and Diameter (cm) of Rod	53.00 m	2.54	cm (φ)		
Length (m) and Diameter (cm) of Hose	15.00 m	2.54	cm (φ)		

Pressure gauge Reading : A/1000 (kg/cm <sup>2</sup> )	Water Injection (l/min)					Average of Water Injection : q (l/min)	Water Injection for 1 m : Q (l/min/m)	Water Pressure in Head (cm)			Effective Pressure : P (kg/cm <sup>2</sup> )
	1	2	3	4	5			H	A+B+C	Hf	
1.0	2	1	1	2	1	1.38	0.28	3730	3730	0	3.73
4.0	6	7	7	6	7	6.63	1.33	6710	6730	20	6.71
7.0	16	17	17	16	17	16.63	3.33	9600	9730	130	9.60
10.0	17	17	16	16	17	22.50	4.50	12450	12730	280	12.45
7.0	23	22	22	23	22	18.25	3.65	9590	9730	140	9.59
4.0	10	9	8	8	9	9.00	1.80	6630	6730	100	6.63
1.0	3	2	2	3	2	2.63	0.53	3730	3730	0	3.73

L<sub>u</sub>= - P<sub>c</sub>= 6.50  
L<sub>v</sub>= 2.5



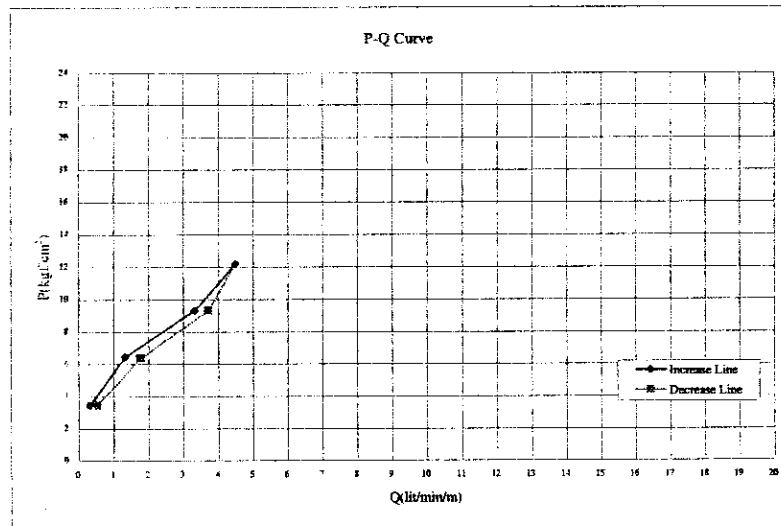
G2-88

RECORD OF WATER PRESSURE TEST

Project	WRDMM	Bore Hole No.	BH TD-4	Date	9/18/2002
Depth (m)	( 53.00 - 68.00 )	Test Length (m)	5.00	Hole Radius (cm)	4.45
G.W.L. before day's work (m)	45.00	Pressure gauge height (m) : C/100	0.50		
G.W.L. before testing (m) : B/100	34.10	Packer NQ size (cm)	8.90	HQ	
Length (m) and Diameter (cm) of Rod	57.00 m	2.54	cm ( $\phi$ )		
Length (m) and Diameter (cm) of Hose	15.00 m	2.54	cm ( $\phi$ )		

Pressure gauge Reading : A/1000 (kg/cm <sup>2</sup> )	Water Injection (l/min)					Average of Water Injection : q (l/min)	Water Injection for 1 m : Q (l/min/m)	Water Pressure in Head (cm)			Effective Pressure : P (kg/cm <sup>2</sup> )
	1	2	3	4	5			H=A+B+C-Hf			
	6	7	8	9	10			H	A+B+C	Hf	
1.0	1	2	2	1	2	1.63	0.33	3460	3460	0	3.46
4.0	6	7	7	6	7	6.63	1.33	6440	6460	20	6.44
7.0	16	17	17	16	17	16.63	3.33	9330	9460	130	9.33
10.0	17	16	17	17	16	22.50	4.50	12190	12460	280	12.18
7.0	23	22	22	23	22	18.63	3.73	9320	9460	140	9.32
4.0	18	19	19	18	19	8.88	1.78	5360	5460	100	6.36
1.0	19	18	19	19	18	2.63	0.53	3460	3460	0	3.46

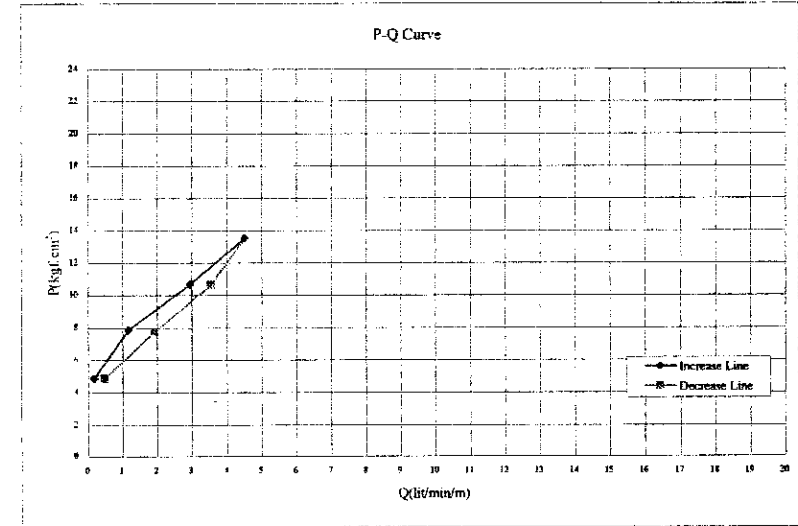
L <sub>u</sub> =	-	P <sub>c</sub> =	6.20
L <sub>u</sub> '=	2.5		



Project	WRDMM	Bore Hole No.	BH TD-4	Date	9/18/2002
Depth (m)	( 60.00 - 65.00 )	Test Length (m)	5.00	Hole Radius (cm)	4.45
G.W.L. before day's work (m)	52.00	Pressure gauge height (m) : C/100	0.50		
G.W.L. before testing (m) : B/100	38.90	Packer NQ size (cm)	8.90	HQ	
Length (m) and Diameter (cm) of Rod	62.00 m	2.54	cm ( $\phi$ )		
Length (m) and Diameter (cm) of Hose	15.00 m	2.54	cm ( $\phi$ )		

Pressure gauge Reading : A/1000 (kg/cm <sup>2</sup> )	Water Injection (l/min)					Average of Water Injection : q (l/min)	Water Injection for 1 m : Q (l/min/m)	Water Pressure in Head (cm)			Effective Pressure : P (kg/cm <sup>2</sup> )
	1	2	3	4	5			H=A+B+C-Hf			
	6	7	8	9	10			H	A+B+C	Hf	
1.0	1	1	1	0	1	0.88	0.18	4850	4850	0	4.85
4.0	5	6	6	6	5	5.88	1.18	7850	7850	0	7.85
7.0	15	14	14	14	15	14.75	2.95	10670	10850	180	10.67
10.0	16	15	14	15	16	22.63	4.53	13530	13850	320	13.53
7.0	23	23	22	23	23	17.75	3.55	10650	10850	200	10.65
4.0	22	22	23	22	23	9.63	1.93	7740	7850	110	7.74
1.0	18	18	17	18	18	2.38	0.48	4850	4850	0	4.85

L <sub>u</sub> =	-	P <sub>c</sub> =	8.00
L <sub>u</sub> '=	1.9		



G2-89

RECORD OF WATER PRESSURE TEST

Project		Bore Hole No.		Date	
WRDMM		BH TD-4		9/19/2002	
Depth (m)		Test Length (m)		Hole Radius (cm)	
( 85.00 - 70.00 )		5.00		4.45	
G.W.L. before day's work (m)		Pressure gauge height (m) : C/100		0.50	
54.10		Packer NQ size (cm)		8.90 HQ	
G.W.L. before testing (m) : B/100		Length (m) and Diameter (cm) of Rod		67.00 m	
39.20		2.54 cm (φ)			
Length (m) and Diameter (cm) of Hose		15.00 m		2.54 cm (φ)	

Pressure gauge Reading : A/1000 (kg/cm <sup>2</sup> )	Water Injection (l/min)					Average of Water Injection : q (l/min)	Water Injection for 1 m : Q (l/min/m)	Water Pressure in Head (cm)			Effective Pressure : P (kg/cm <sup>2</sup> )
	H=A+B+C-Hf										
	H	A+B+C	Hf								
1.0	2	1	1	2	1	1.38	0.28	4970	4970	0	4.97
4.0	6	7	7	6	7	6.63	1.33	7900	7970	70	7.90
7.0	16	17	16	16	17	16.25	3.25	10750	10970	220	10.75
10.0	16	16	17	16	16						
	23	22	22	23	22	22.50	4.50	13620	13970	350	13.62
7.0	18	18	19	18	18	18.25	3.65	10720	10970	250	10.72
	19	18	19	18	18						
4.0	10	9	10	9	8	9.25	1.85	7850	7970	120	7.85
	10	9	9	8	10						
1.0	3	3	2	3	1	2.50	0.50	4970	4970	0	4.97
	2	3	2	3	2						

Lu=	-	Pc=	8.00
Lu=	2.0		

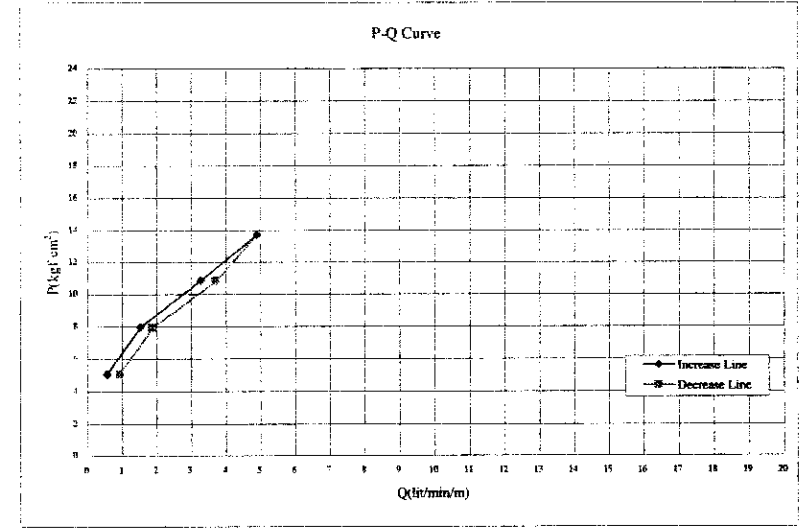
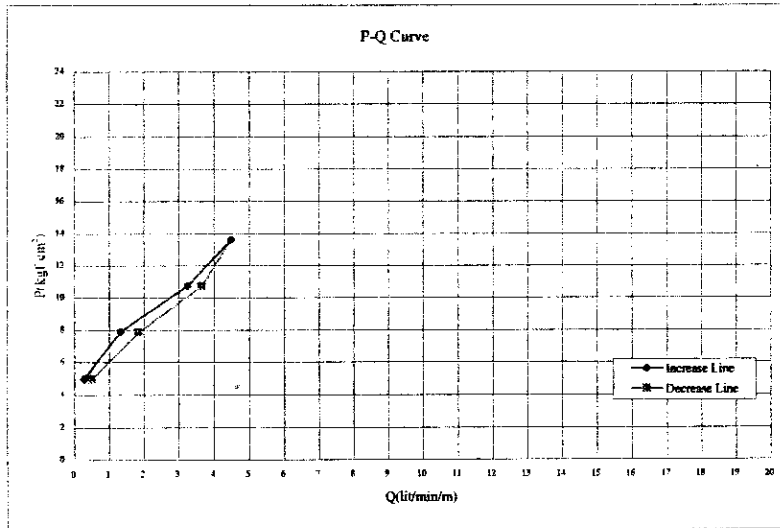
Project		Bore Hole No.		Date	
WRDMM		BH TD-4		9/23/2002	
Depth (m)		Test Length (m)		Hole Radius (cm)	
( 70.00 - 75.00 )		5.00		4.45	
G.W.L. before day's work (m)		Pressure gauge height (m) : C/100		0.50	
55.00		Packer NQ size (cm)		8.90 HQ	
G.W.L. before testing (m) : B/100		Length (m) and Diameter (cm) of Rod		72.00 m	
40.00		2.54 cm (φ)			
Length (m) and Diameter (cm) of Hose		15.00 m		2.54 cm (φ)	

Pressure gauge Reading : A/1000 (kg/cm <sup>2</sup> )	Water Injection (l/min)					Average of Water Injection : q (l/min)	Water Injection for 1 m : Q (l/min/m)	Water Pressure in Head (cm)			Effective Pressure : P (kg/cm <sup>2</sup> )
	H=A+B+C-Hf										
	H	A+B+C	Hf								
1.0	3	3	2	3	3	2.75	0.55	5050	5050	0	5.05
4.0	7	8	8	7	8	7.63	1.53	7970	8050	80	7.97
7.0	17	16	16	17	16	16.38	3.28	10850	11050	200	10.85
	16	17	16	16	17						
10.0	24	25	25	24	24	24.50	4.90	13700	14050	350	13.70
	25	24	25	25	24						
7.0	18	19	19	18	19	18.63	3.73	10830	11050	220	10.83
	19	18	19	19	18						
4.0	10	9	9	10	9	9.28	1.88	7910	8050	140	7.91
	9	10	9	9	10						
1.0	4	5	5	4	5	4.63	0.93	5050	5050	0	5.05
	5	4	5	5	4						

Lu=	-	Pc=	8.00
Lu=	2.2		

G2-90



RECORD OF WATER PRESSURE TEST

Project	WRDMM	Bore Hole No.	BH TD-4	Date	9/23/2002
Depth (m)	( 75.00 - 80.00 )	Test Length (m)	5.00	Hole Radius (cm)	4.45
G.W.L. before day's work (m)	54.50	Pressure gauge height (m) : C/100	0.50		
G.W.L. before testing (m) : B/100	46.00	Packer NQ size (cm)	8.90	HQ	
Length (m) and Diameter (cm) of Rod	76.00 m	2.54	cm (φ)		
Length (m) and Diameter (cm) of Hose	15.00 m	2.54	cm (φ)		

Pressure gauge Reading : A/1000 (kgf/cm <sup>2</sup> )	Water Injection (l/min)					Average of Water Injection : q (l/min)	Water Injection for 1 m : Q (l/min/m)	Water Pressure in Head (cm)			Effective Pressure : P (kgf/cm <sup>2</sup> )
	1	2	3	4	5			H	H=A+B+C-Hf	Hf	
1.0	2	3	3	2	3	2.63	0.53	5650	5650	0	5.65
4.0	8	7	7	8	7	7.38	1.48	8650	8650	0	8.65
7.0	16	17	17	16	17	16.63	3.33	11470	11650	180	11.47
10.0	24	25	25	24	25	24.63	4.93	14280	14650	400	14.25
7.0	18	19	18	18	19	18.38	3.68	11370	11650	280	11.37
4.0	9	10	9	9	10	9.38	1.88	8510	8650	140	8.51
1.0	4	5	4	4	5	4.38	0.88	5650	5650	0	5.65

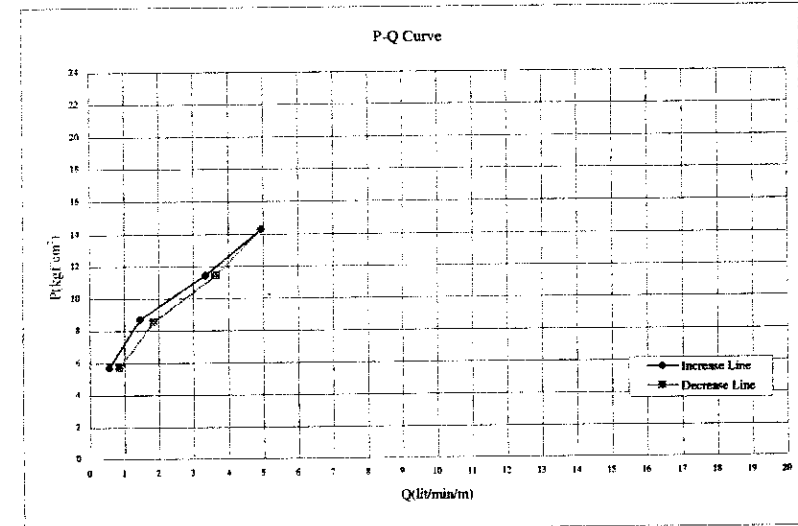
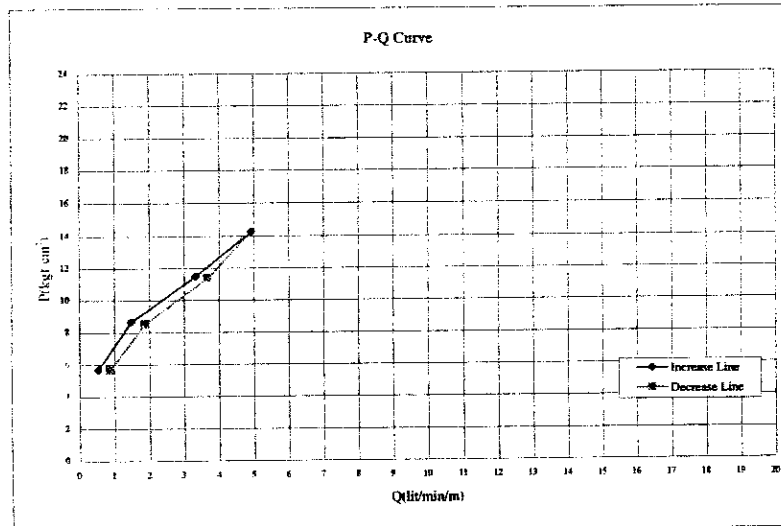
L <sub>u</sub> =	-	P <sub>C</sub> =	8.30
L <sub>u</sub> '=	1.9		

Project	WRDMM	Bore Hole No.	BH TD-4	Date	9/23/2002
Depth (m)	( 80.00 - 85.00 )	Test Length (m)	5.00	Hole Radius (cm)	4.45
G.W.L. before day's work (m)	54.80	Pressure gauge height (m) : C/100	0.50		
G.W.L. before testing (m) : B/100	46.50	Packer NQ size (cm)	8.90	HQ	
Length (m) and Diameter (cm) of Rod	77.00 m	2.54	cm (φ)		
Length (m) and Diameter (cm) of Hose	15.00 m	2.54	cm (φ)		

Pressure gauge Reading : A/1000 (kgf/cm <sup>2</sup> )	Water Injection (l/min)					Average of Water Injection : q (l/min)	Water Injection for 1 m : Q (l/min/m)	Water Pressure in Head (cm)			Effective Pressure : P (kgf/cm <sup>2</sup> )
	1	2	3	4	5			H	H=A+B+C-Hf	Hf	
1.0	2	3	3	2	3	2.75	0.55	5700	5700	0	5.70
4.0	8	7	7	7	8	7.25	1.45	8700	8700	0	8.70
7.0	16	17	17	17	16	16.75	3.35	11450	11700	250	11.45
10.0	24	25	25	24	25	24.75	4.95	14300	14700	400	14.30
7.0	18	18	18	18	19	18.25	3.65	11420	11700	280	11.42
4.0	9	9	9	10	9	9.25	1.85	8550	8700	150	8.55
1.0	4	4	4	5	4	4.25	0.85	5700	5700	0	5.70

L <sub>u</sub> =	-	P <sub>C</sub> =	8.30
L <sub>u</sub> '=	1.8		

G2-91

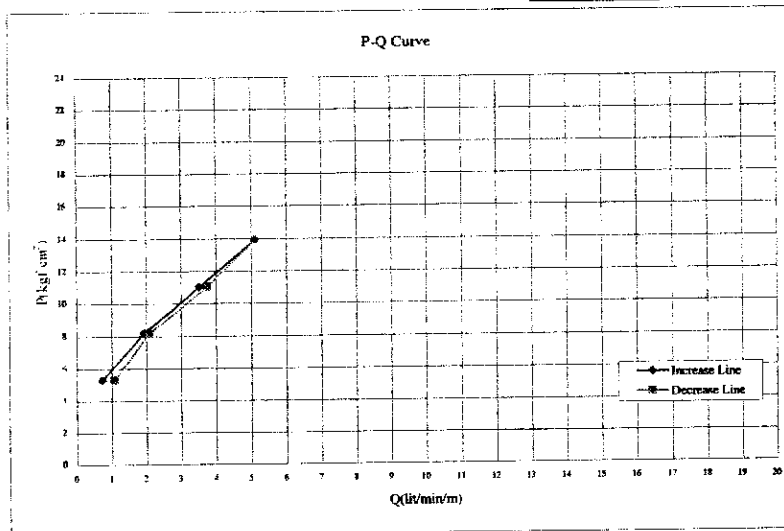


RECORD OF WATER PRESSURE TEST

Project	WRDMM	Bore Hole No.	BH TD-4	Date	9/24/2002
Depth (m)	( 05.00 - 99.00 )	Test Length (m)	5.00	Hole Radius (cm)	4.45
G.W.L. before day's work (m)	54.90	Pressure gauge height (m) : C/100	0.50		
G.W.L. before testing (m) : B/100	42.60	Packer NQ size (cm)	7.00	NQ	
Length (m) and Diameter (cm) of Rod	87.00 m	2.54 cm (φ)			
Length (m) and Diameter (cm) of Hose	15.00 m	2.54 cm (φ)			

Pressure gauge Reading : A/1000 (kgf/cm <sup>2</sup> )	Water Injection (l/min)					Average of Water Injection : q (l/min)	Water Injection for 1 m : Q (l/min/m)	Water Pressure in Head (cm)			Effective Pressure : P (kgf/cm <sup>2</sup> )
	1	2	3	4	5			H=A+B+C-Hf			
	6	7	8	9	10			H	A+B+C	Hf	
1.0	3	4	4	3	4	3.63	0.73	5310	5310	0	5.31
4.0	4	3	4	4	3	9.63	1.93	8170	8310	140	8.17
7.0	9	10	10	9	10	17.63	3.53	11030	11310	280	11.03
10.0	10	9	10	10	9	25.63	5.13	13930	14310	380	13.93
7.0	17	18	18	17	18	18.75	3.75	11010	11310	300	11.01
4.0	18	17	18	18	17	10.38	2.08	8160	8310	150	8.16
1.0	25	26	26	25	26	5.38	1.08	5310	5310	0	5.31
	26	25	26	26	25						
	19	18	18	19	19						
	19	18	19	19	20						
	11	10	10	11	10						
	10	11	10	10	11						
	6	5	5	6	5						
	5	6	5	5	6						

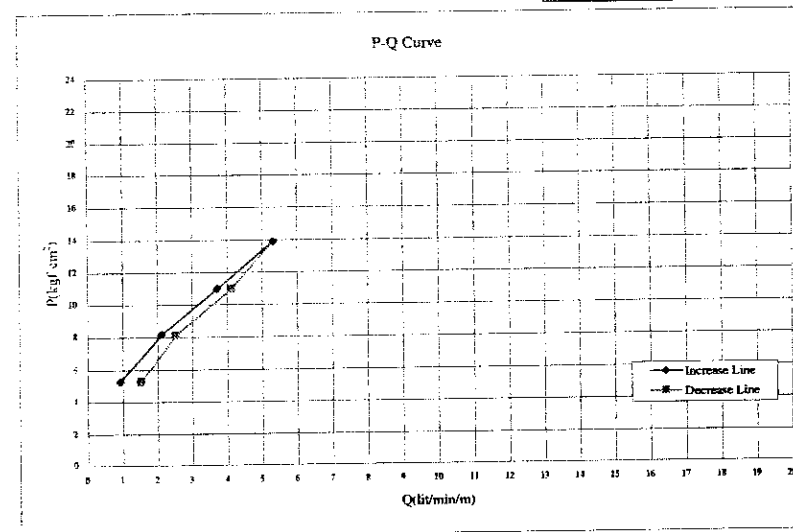
Lu=	-	Pc=	8.10
Lv=	2.7		



Project	WRDMM	Bore Hole No.	BH TD-4	Date	9/24/2002
Depth (m)	( 05.00 - 99.00 )	Test Length (m)	5.00	Hole Radius (cm)	3.50
G.W.L. before day's work (m)	55.00	Pressure gauge height (m) : C/100	0.50		
G.W.L. before testing (m) : B/100	42.20	Packer NQ size (cm)	7.00	NQ	
Length (m) and Diameter (cm) of Rod	92.00 m	2.54 cm (φ)			
Length (m) and Diameter (cm) of Hose	15.00 m	3.54 cm (φ)			

Pressure gauge Reading : A/1000 (kgf/cm <sup>2</sup> )	Water Injection (l/min)					Average of Water Injection : q (l/min)	Water Injection for 1 m : Q (l/min/m)	Water Pressure in Head (cm)			Effective Pressure : P (kgf/cm <sup>2</sup> )
	1	2	3	4	5			H=A+B+C-Hf			
	6	7	8	9	10			H	A+B+C	Hf	
1.0	4	5	5	4	5	4.63	0.93	5270	5270	0	5.27
4.0	5	4	5	5	4	10.63	2.13	8150	8270	120	8.15
7.0	10	11	11	10	11	18.63	3.73	10970	11270	300	10.97
10.0	18	19	19	18	19	26.63	5.33	13890	14270	380	13.89
7.0	26	27	27	26	27	20.63	4.13	10990	11270	310	10.96
4.0	27	26	27	27	26	12.63	2.53	8090	8270	180	8.09
1.0	20	21	21	20	21	7.63	1.53	5270	5270	0	5.27
	21	20	21	21	20						
	12	13	13	12	13						
	13	12	13	13	12						
	7	8	8	7	8						
	8	7	8	8	7						

Lu=	-	Pc=	8.10
Lv=	2.9		



G2-92

RECORD OF WATER PRESSURE TEST

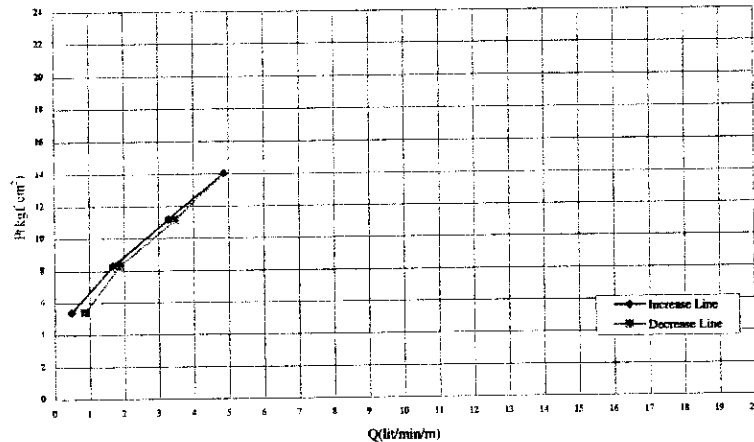
BH TD-4, 9/24/2002

Project	WRDMM	Bore Hole No.	BH TD-4	Date	9/24/2002
Depth (m)	( 95.00 - 100.00 )	Test Length (m)	5.00	Hole Radius (cm)	3.50
G.W.L. before day's work (m)	55.00	Pressure gauge height (m) : C/100	0.50		
G.W.L. before testing (m) : B/100	43.50	Packer NQ size (cm)	7.00	NQ	
Length (m) and Diameter (cm) of Rod	96.00 m	2.54 cm (φ)			
Length (m) and Diameter (cm) of Hose	15.00 m	2.54 cm (φ)			

Pressure gauge Reading : A/1000 (kgf/cm <sup>2</sup> )	Water Injection (l/min)					Average of Water Injection : q (l/min)	Water Injection for 1 m : Q (l/min/m)	Water Pressure in Head (cm)			Effective Pressure : P (kgf/cm <sup>2</sup> )
	1	2	3	4	5			H=A+B+C-Hf			
	6	7	8	9	10			H	A+B+C	Hf	
1.0	3	2	2	3	2	2.38	0.48	5400	5400	0	5.40
4.0	9	8	8	9	8	8.38	1.68	8280	8400	120	8.28
7.0	17	16	16	17	16	16.38	3.28	11190	11400	210	11.19
10.0	25	24	24	25	24	24.38	4.88	14020	14400	380	14.02
7.0	18	17	17	18	17	17.38	3.48	11120	11400	280	11.12
4.0	10	9	9	10	9	9.38	1.88	8280	8400	120	8.28
1.0	5	4	4	5	4	4.38	0.88	5400	5400	0	5.40

Lu=	-	Pc=	8.10
Lu=	2.3		

P-Q Curve



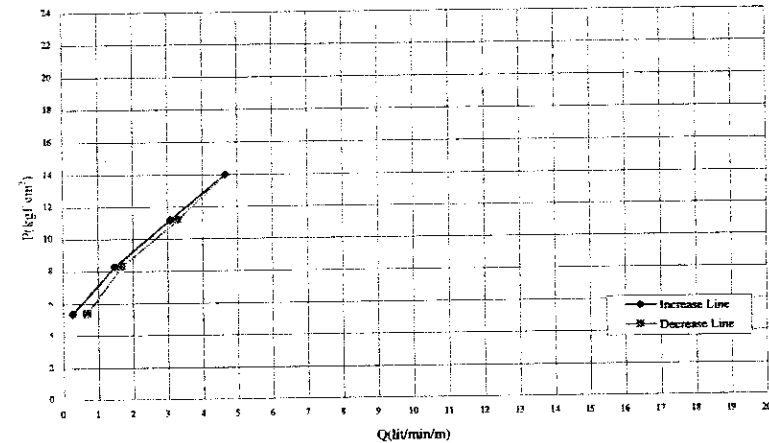
BH TD-4, 9/25/2002

Project	WRDMM	Bore Hole No.	BH TD-4	Date	9/25/2002
Depth (m)	( 100.00 - 105.00 )	Test Length (m)	5.00	Hole Radius (cm)	3.50
G.W.L. before day's work (m)	54.90	Pressure gauge height (m) : C/100	0.50		
G.W.L. before testing (m) : B/100	43.20	Packer NQ size (cm)	7.00	NQ	
Length (m) and Diameter (cm) of Rod	102.00 m	2.54 cm (φ)			
Length (m) and Diameter (cm) of Hose	15.00 m	2.54 cm (φ)			

Pressure gauge Reading : A/1000 (kgf/cm <sup>2</sup> )	Water Injection (l/min)					Average of Water Injection : q (l/min)	Water Injection for 1 m : Q (l/min/m)	Water Pressure in Head (cm)			Effective Pressure : P (kgf/cm <sup>2</sup> )
	1	2	3	4	5			H=A+B+C-Hf			
	6	7	8	9	10			H	A+B+C	Hf	
1.0	2	1	1	2	1	1.38	0.28	5370	5370	0	5.37
4.0	8	7	7	8	7	7.38	1.48	8290	8370	80	8.29
7.0	16	15	15	16	15	15.38	3.08	11170	11370	200	11.17
10.0	24	23	23	24	23	23.38	4.68	13990	14370	380	13.99
7.0	17	16	16	17	16	16.50	3.30	11150	11370	220	11.15
4.0	9	8	8	9	8	8.38	1.68	8280	8370	90	8.28
1.0	4	3	3	4	3	3.38	0.68	5370	5370	0	5.37

Lu=	-	Pc=	8.10
Lu=	2.1		

P-Q Curve



Q2-93