

***G2 Borehole  
Permeability Test***

RECORD OF WATER PRESSURE TEST

Project	WRDMM	Bore Hole No.	BH-AD-1	Date	6/28/2002
Depth (m)	( 20.00 - 25.00 )	Test Length (m)	5.00	Hole Radius (cm)	3.50
G.W.L. before day's work (m)		Pressure gauge height (m) : C/100	0.20		
G.W.L. before testing (m) : B/100		Packer NQ size (cm)	5.60		
Length (m) and Diameter (cm) of Rod	21.00 m	3.20 cm (φ)			
Length (m) and Diameter (cm) of Hose	12.00 m	3.20 cm (φ)			

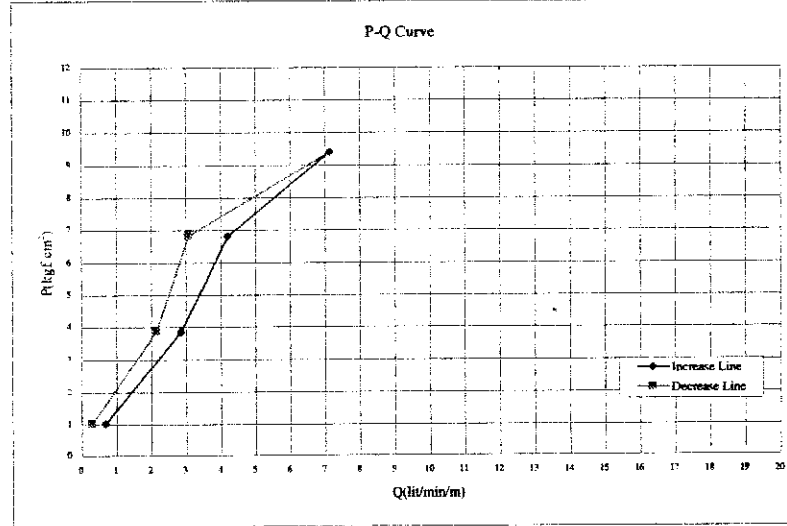
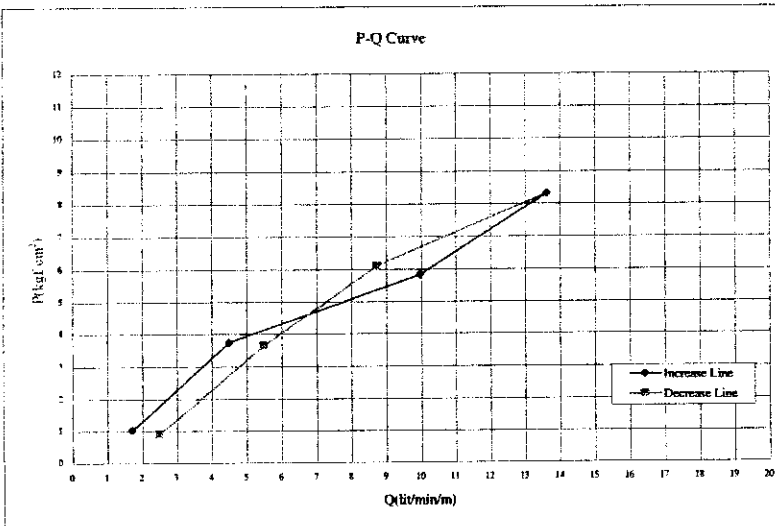
Pressure gauge Reading : A/1000 (kgf/cm <sup>2</sup> )	Water Injection (l/min)					Average of Water Injection : q (l/min)	Water Injection for 1 m : Q (l/min/m)	Water Pressure in Head (cm)			Effective Pressure : P (kgf/cm <sup>2</sup> )
	1	2	3	4	5			H	A+B+C	Hf	
1.0	9	8	9	9	8	8.50	1.70	1020	1020	0	1.02
4.0	21	21	23	23	23	22.50	4.50	3740	4020	280	3.74
7.0	49	50	50	49	49	49.88	9.98	5840	7020	1180	5.84
10.0	67	69	68	68	68	68.13	13.63	8320	10020	1700	8.32
7.0	43	44	41	43	44	43.63	8.73	6100	7020	920	6.10
4.0	27	28	27	27	28	27.50	5.50	3640	4020	380	3.64
1.0	13	12	13	13	12	12.50	2.50	900	1030	120	0.90

Lu= - Pc= 3.70  
Lu= 11.0

Project	WRDMM	Bore Hole No.	BH-AD-1	Date	6/29/2002
Depth (m)	( 25.00 - 30.00 )	Test Length (m)	5.00	Hole Radius (cm)	3.50
G.W.L. before day's work (m)		Pressure gauge height (m) : C/100	0.20		
G.W.L. before testing (m) : B/100		Packer NQ size (cm)	5.60		
Length (m) and Diameter (cm) of Rod	26.00 m	3.20 cm (φ)			
Length (m) and Diameter (cm) of Hose	12.00 m	3.20 cm (φ)			

Pressure gauge Reading : A/1000 (kgf/cm <sup>2</sup> )	Water Injection (l/min)					Average of Water Injection : q (l/min)	Water Injection for 1 m : Q (l/min/m)	Water Pressure in Head (cm)			Effective Pressure : P (kgf/cm <sup>2</sup> )
	1	2	3	4	5			H	A+B+C	Hf	
1.0	4	3	4	3	3	3.38	0.68	1020	1020	0	1.02
4.0	14	14	13	13	14	14.25	2.85	3840	4020	180	3.84
7.0	19	20	20	21	21	21.00	4.20	6800	7020	220	6.80
10.0	22	21	22	22	21	21.75	7.15	9400	10020	620	9.40
7.0	15	15	16	16	16	15.38	3.08	6830	7020	190	6.83
4.0	11	12	10	11	12	10.75	2.15	3860	4020	160	3.86
1.0	3	1	2	2	1	1.50	0.30	1020	1020	0	1.02

Lu= - Pc= -  
Lu= 7.7



G2-1

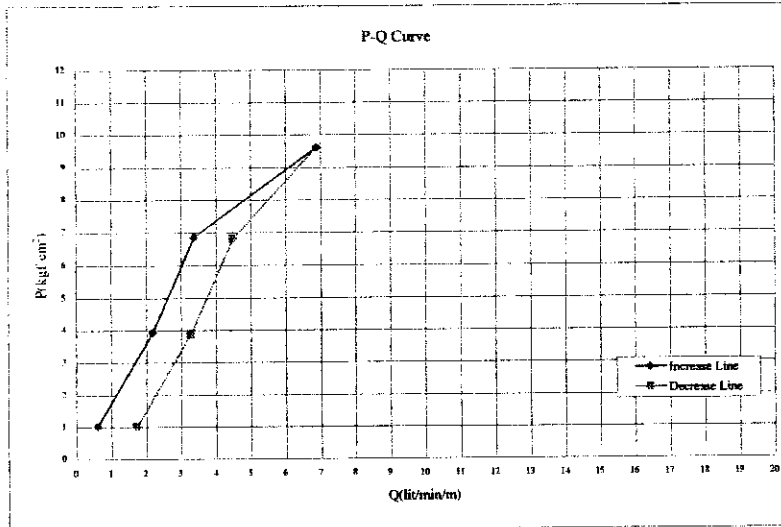
RECORD OF WATER PRESSURE TEST

Project	WRDMM	Bore Hole No.	BH-AD-1	Date	7/1/2002
Depth (m)	( 38.00 - 45.00 )	Test Length (m)	5.00	Hole Radius (cm)	3.50
G.W.L. before day's work (m)		Pressure gauge height (m) : C/100			0.20
G.W.L. before testing (m) : B/100		Packer NQ size (cm)	5.60		
Length (m) and Diameter (cm) of Rod	31.00 m	3.20 cm (φ)			
Length (m) and Diameter (cm) of Hose	12.00 m	3.20 cm (φ)			

Pressure gauge Reading : A/1000 (kgf/cm <sup>2</sup> )	Water Injection (l/min)					Average of Water Injection : q (l/min)	Water Injection for 1 m : Q (l/min/m)	Water Pressure in Head (cm) H=A+B+C-Hf			Effective Pressure : P (kgf/cm <sup>2</sup> )
	1	2	3	4	5			H	A+B+C	Hf	
1.0	6	7	8	9	10	3.00	0.60	1020	1020	0	1.02
4.0	3	4	4	3	3	10.88	2.18	3930	4020	90	3.93
7.0	10	10	11	11	10	16.88	3.38	6850	7020	170	6.85
10.0	11	12	12	11	11	34.38	6.88	9620	10020	400	9.62
7.0	18	17	16	16	16	22.50	4.50	6810	7020	210	6.81
4.0	17	17	17	18	17	16.38	3.28	3880	4020	140	3.88
1.0	35	34	35	34	34	8.63	1.73	1020	1020	0	1.02
	34	34	34	35	36						
	31	20	22	22	24						
	23	23	23	23	23						
	16	17	17	17	16						
	15	17	16	16	16						
	9	7	9	8	9						
	9	9	8	8	9						

Lu= - Pc= 7.40  
Ld= 5.4

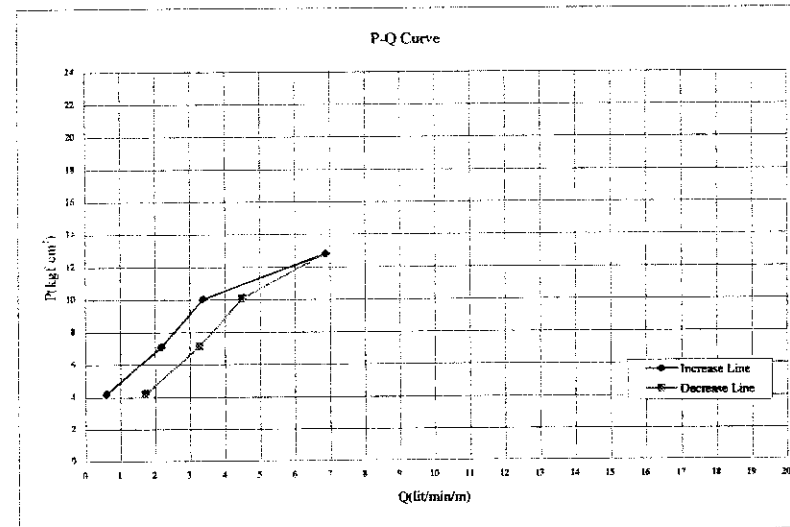


Project	WRDMM	Bore Hole No.	BH-AD-1	Date	7/6/2002
Depth (m)	( 35.00 - 40.00 )	Test Length (m)	5.00	Hole Radius (cm)	7.00
G.W.L. before day's work (m)		Pressure gauge height (m) : C/100			0.20
G.W.L. before testing (m) : B/100		Packer NQ size (cm)	5.60		
Length (m) and Diameter (cm) of Rod	36.00 m	3.20 cm (φ)			
Length (m) and Diameter (cm) of Hose	12.00 m	3.20 cm (φ)			

Pressure gauge Reading : A/1000 (kgf/cm <sup>2</sup> )	Water Injection (l/min)					Average of Water Injection : q (l/min)	Water Injection for 1 m : Q (l/min/m)	Water Pressure in Head (cm) H=A+B+C-Hf			Effective Pressure : P (kgf/cm <sup>2</sup> )
	1	2	3	4	5			H	A+B+C	Hf	
1.0	6	7	8	9	10	3.00	0.60	4220	4220	0	4.22
4.0	3	4	4	3	3	10.88	2.18	7100	7220	120	7.10
7.0	10	10	11	11	10	16.88	3.38	10040	10220	180	10.04
10.0	11	12	12	11	11	34.38	6.88	12810	13220	410	12.81
7.0	18	17	16	16	16	22.50	4.50	10090	10220	130	10.09
4.0	17	17	17	18	17	16.38	3.28	7120	7220	90	7.12
1.0	35	34	35	34	34	8.63	1.73	4220	4220	0	4.22
	34	34	34	35	36						
	31	20	22	22	24						
	23	23	23	23	23						
	16	17	17	17	16						
	15	17	16	16	16						
	9	7	9	8	9						
	9	9	8	8	9						

Lu= 3.7 Pc= -  
Ld= -



G2-2

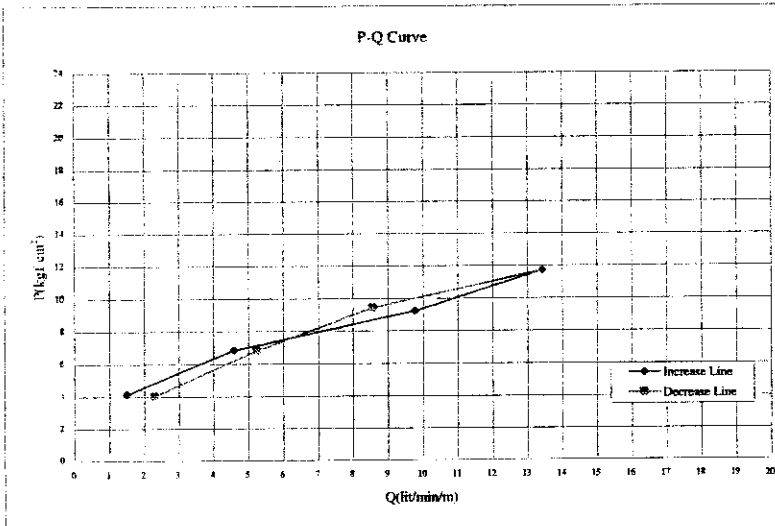
RECORD OF WATER PRESSURE TEST

Project	WRDMM	Bore Hole No.	BH-AD-1	Date	7/9/2002
Depth (m)	( 45.00 - 50.00 )	Test Length (m)	5.00	Hole Radius (cm)	3.50
G.W.L. before day's work (m)	29.00	Pressure gauge height (m) : C/100	0.20		
G.W.L. before testing (m) : B/100	31.00	Packer NQ size (cm)	5.60		
Length (m) and Diameter (cm) of Rod	41.00 m	3.20 cm (φ)			
Length (m) and Diameter (cm) of Hose	12.00 m	3.20 cm (φ)			

Pressure gauge Reading : A/1000 (kg/cm <sup>2</sup> )	Water Injection (l/min)					Average of Water Injection : q (l/min)	Water Injection for 1 m : Q (l/min/m)	Water Pressure in Head (cm)			Effective Pressure : P (kgf/cm <sup>2</sup> )
	1	2	3	4	5			H=A+B+C-Hf			
	6	7	8	9	10			H	A+B+C	Hf	
1.0	8	7	8	8	7	7.50	1.50	4120	4120	0	4.12
4.0	20	20	23	23	23	23.00	4.60	6840	7120	280	6.84
7.0	50	49	49	49	50	48.88	9.78	9220	10120	900	9.22
10.0	67	68	67	67	67	67.13	13.43	11520	13120	1400	11.72
7.0	42	43	40	43	43	42.88	8.58	9440	10120	680	9.44
4.0	26	27	25	26	26	26.25	5.25	6820	7120	300	6.82
1.0	12	11	12	12	11	11.50	2.30	4020	4120	100	4.02

Lu= - Pc= 6.90  
Lu= 8.1

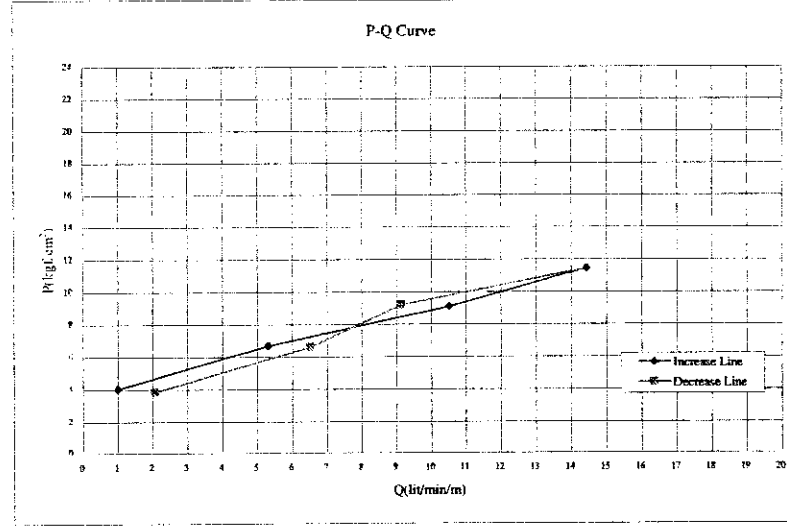


Project	WRDMM	Bore Hole No.	BH-AD-1	Date	7/11/2002
Depth (m)	( 45.00 - 50.00 )	Test Length (m)	5.00	Hole Radius (cm)	3.50
G.W.L. before day's work (m)	29.00	Pressure gauge height (m) : C/100	0.20		
G.W.L. before testing (m) : B/100	30.00	Packer NQ size (cm)	5.60		
Length (m) and Diameter (cm) of Rod	46.00 m	3.20 cm (φ)			
Length (m) and Diameter (cm) of Hose	12.00 m	3.20 cm (φ)			

Pressure gauge Reading : A/1000 (kg/cm <sup>2</sup> )	Water Injection (l/min)					Average of Water Injection : q (l/min)	Water Injection for 1 m : Q (l/min/m)	Water Pressure in Head (cm)			Effective Pressure : P (kgf/cm <sup>2</sup> )
	1	2	3	4	5			H=A+B+C-Hf			
	6	7	8	9	10			H	A+B+C	Hf	
1.0	4	5	4	4	6	5.00	1.00	4020	4020	0	4.02
4.0	25	28	27	26	28	26.63	5.33	6690	7020	330	6.69
7.0	51	52	53	53	52	52.63	10.53	9070	10020	950	9.07
10.0	71	72	72	71	73	72.13	14.43	11490	13020	1580	11.44
7.0	45	47	47	45	45	45.75	9.15	9200	10020	820	9.20
4.0	31	34	35	32	33	32.63	6.53	6610	7020	410	6.61
1.0	11	10	10	11	10	10.38	2.08	3830	4020	190	3.83

Lu= - Pc= 6.70  
Lu= 10.7



Q2-3

RECORD OF WATER PRESSURE TEST

BH-AD-2 5/10/2002

Project	WRDMM	Bore Hole No.	BH-AD-2	Date	5/10/2002
Depth (m)	( 37.00 - 40.00 )	Test Length (m)	3.00	Hole Radius (cm)	2.80
G.W.L. before day's work (m)	0.20	Pressure gauge height (m) : C/100	0.20		
G.W.L. before testing (m) : B/100	1.20	Packer NQ size (cm)	5.60		
Length (m) and Diameter (cm) of Rod	38.00 m	2.54 cm (φ)			
Length (m) and Diameter (cm) of Hose	12.00 m	2.54 cm (φ)			

Pressure gauge Reading : A/1000 (kgf/cm <sup>2</sup> )	Water Injection (l/min)					Average of Water Injection : q (l/min)	Water Injection for 1 m : Q (l/min/m)	Water Pressure in Head (cm)			Effective Pressure : P (kgf/cm <sup>2</sup> )
	1	2	3	4	5			H	H=A+B+C-Hf	Hf	
1.0	4	4	3	3	4	3.50	1.17	1140	1140	0	1.14
4.0	7	6	6	7	5	6.50	2.17	4140	4140	0	4.14
7.0	13	12	12	11	12	12.25	4.08	6740	7140	400	6.74
10.0	21	22	22	23	23	21.88	7.29	8340	10140	1800	8.34
7.0	10	11	9	9	9	9.38	3.13	6740	7140	400	6.74
4.0	3	3	4	4	3	3.25	1.08	4140	4140	0	4.14
1.0	1	0	1	1	2	0.75	0.25	1140	1140	0	1.14

L <sub>u</sub> =	-	P <sub>0</sub> =	6.00
L <sub>u</sub> =	4.1		

BH-AD-2 5/10/2002

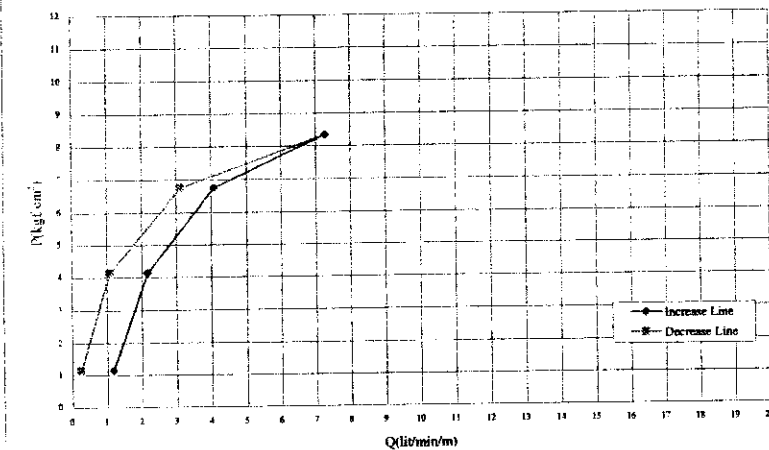
Project	WRDMM	Bore Hole No.	BH-AD-2	Date	5/10/2002
Depth (m)	( 40.00 - 45.00 )	Test Length (m)	5.00	Hole Radius (cm)	2.80
G.W.L. before day's work (m)	0.20	Pressure gauge height (m) : C/100	0.20		
G.W.L. before testing (m) : B/100	1.30	Packer NQ size (cm)	5.60		
Length (m) and Diameter (cm) of Rod	43.00 m	2.54 cm (φ)			
Length (m) and Diameter (cm) of Hose	12.00 m	2.54 cm (φ)			

Pressure gauge Reading : A/1000 (kgf/cm <sup>2</sup> )	Water Injection (l/min)					Average of Water Injection : q (l/min)	Water Injection for 1 m : Q (l/min/m)	Water Pressure in Head (cm)			Effective Pressure : P (kgf/cm <sup>2</sup> )
	1	2	3	4	5			H	H=A+B+C-Hf	Hf	
1.0	3	2	4	2	3	2.63	0.53	1150	1150	0	1.15
4.0	5	4	5	5	5	5.13	1.03	4150	4150	0	4.15
7.0	9	10	10	10	10	9.88	1.98	6750	7150	400	6.75
10.0	18	18	17	17	16	18.13	3.63	8350	10150	1800	8.35
7.0	11	10	12	12	12	12.38	2.48	6750	7150	400	6.75
4.0	7	8	8	7	8	7.50	1.50	4150	4150	0	4.15
1.0	5	6	5	4	5	4.75	0.95	1150	1150	0	1.15

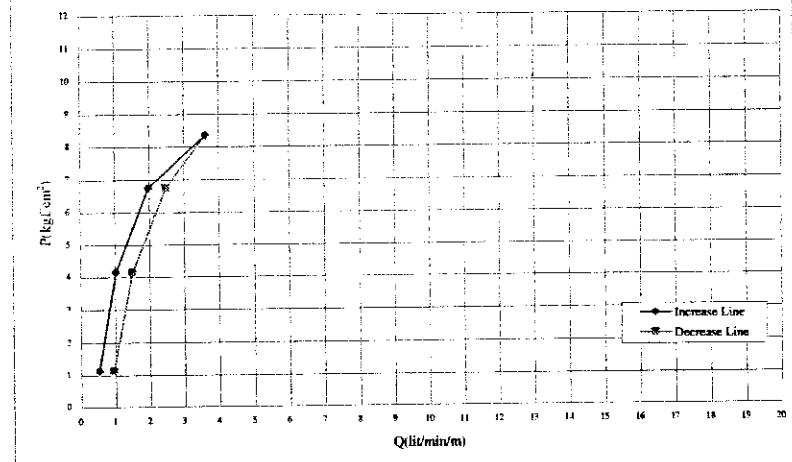
L <sub>u</sub> =	-	P <sub>0</sub> =	6.10
L <sub>u</sub> =	2.0		

G2-4

P-Q Curve



P-Q Curve



RECORD OF WATER PRESSURE TEST

SR.NO. 1

Project	WRDMM	Bore Hole No.	BH-AD-2	Date	5/10/2002
Depth (m)	( 45.00 - 50.00 )	Test Length (m)	5.00	Hole Radius (cm)	2.80
G.W.L. before day's work (m)	0.40	Pressure gauge height (m) : C/100	0.25		
G.W.L. before testing (m) : B/100	1.20	Packer NQ size (cm)	5.60		
Length (m) and Diameter (cm) of Rod	46.00 m	2.54 cm (φ)			
Length (m) and Diameter (cm) of Hose	12.00 m	2.54 cm (φ)			

Pressure gauge Reading : A/1000 (kgf/cm <sup>2</sup> )	Water Injection (l/min)					Average of Water Injection : q (l/min)	Water Injection for 1 m : Q (l/min/m)	Water Pressure in Head (cm)			Effective Pressure : P (kgf/cm <sup>2</sup> )
	1	2	3	4	5			H	A+B+C	Hf	
1.0	4	2	3	4	4	3.63	0.73	1145	1145	0	1.15
4.0	8	8	7	8	8	7.75	1.55	4145	4145	0	4.15
7.0	14	14	15	15	14	14.63	2.93	6745	7145	400	6.75
10.0	21	20	21	20	20	21.13	4.23	8345	10145	1800	8.35
7.0	17	16	17	17	18	17.25	3.45	6745	7145	400	6.75
4.0	10	11	12	10	10	10.38	2.08	4145	4145	0	4.15
1.0	7	6	7	7	6	6.38	1.28	1145	1145	0	1.15

L <sub>0</sub> =	-	P <sub>0</sub> =	5.60
L <sub>1</sub> =	3.1		

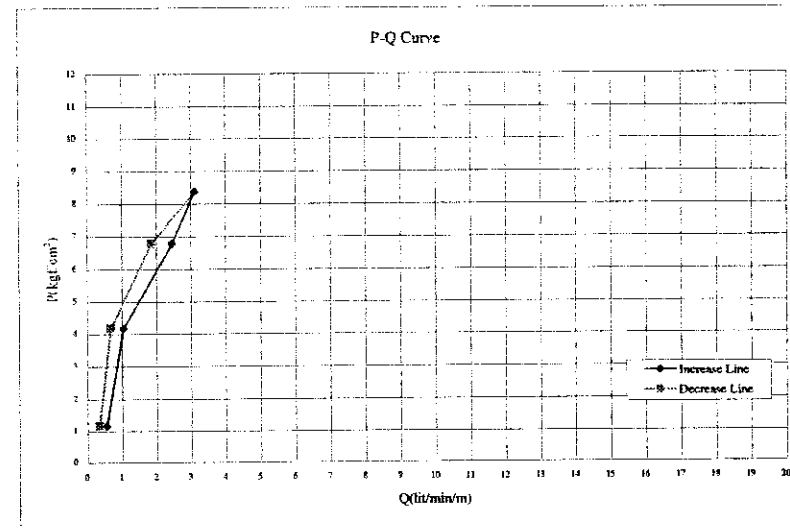
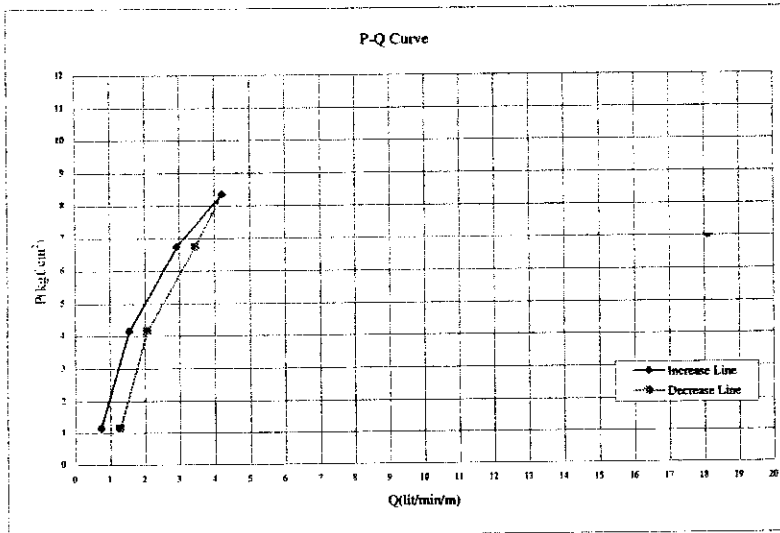
SR.NO. 2

Project	WRDMM	Bore Hole No.	BH-AD-2	Date	5/10/2002
Depth (m)	( 50.00 - 55.00 )	Test Length (m)	5.00	Hole Radius (cm)	2.80
G.W.L. before day's work (m)	0.40	Pressure gauge height (m) : C/100	0.25		
G.W.L. before testing (m) : B/100	1.50	Packer NQ size (cm)	5.60		
Length (m) and Diameter (cm) of Rod	51.00 m	2.54 cm (φ)			
Length (m) and Diameter (cm) of Hose	12.00 m	2.54 cm (φ)			

Pressure gauge Reading : A/1000 (kgf/cm <sup>2</sup> )	Water Injection (l/min)					Average of Water Injection : q (l/min)	Water Injection for 1 m : Q (l/min/m)	Water Pressure in Head (cm)			Effective Pressure : P (kgf/cm <sup>2</sup> )
	1	2	3	4	5			H	A+B+C	Hf	
1.0	3	4	4	3	3	2.75	0.55	1175	1175	0	1.18
4.0	5	6	6	5	5	5.25	1.05	4175	4175	0	4.18
7.0	11	12	12	13	13	12.25	2.45	6775	7175	400	6.78
10.0	17	15	16	16	15	15.63	3.13	8375	10175	1800	8.38
7.0	9	10	9	9	9	9.25	1.85	6775	7175	400	6.78
4.0	3	4	4	4	4	3.38	0.68	4175	4175	0	4.18
1.0	2	1	2	2	1	1.75	0.35	1175	1175	0	1.18

L <sub>0</sub> =	-	P <sub>0</sub> =	4.20
L <sub>1</sub> =	2.0		

G2-5



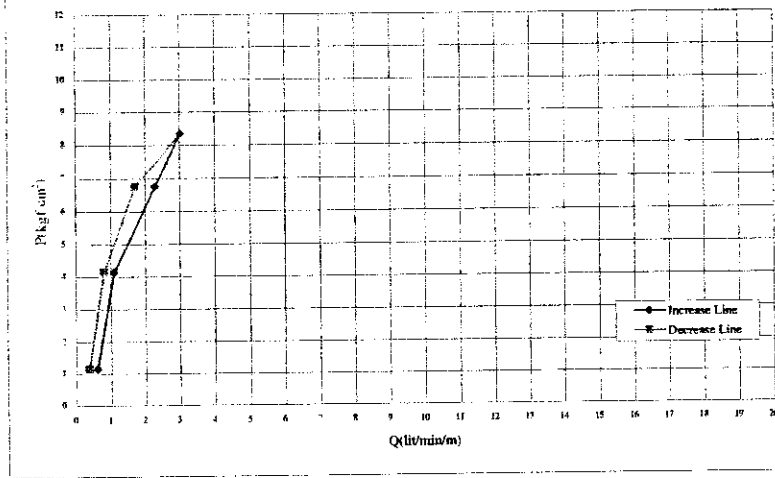
RECORD OF WATER PRESSURE TEST

Project	WRDMM	Bore Hole No.	BH-AD-2	Date	5/11/2002
Depth (m)	( 55.00 - 60.00 )	Test Length (m)	5.00	Hole Radius (cm)	2.80
G.W.L. before day's work (m)	0.40	Pressure gauge height (m) : C/100	0.25		
G.W.L. before testing (m) : B/100	1.20	Packer NQ size (cm)	5.60		
Length (m) and Diameter (cm) of Rod	56.00 m	2.54 cm (φ)			
Length (m) and Diameter (cm) of Hose	12.00 m	2.54 cm (φ)			

Pressure gauge Reading : A/1000 (kgf/cm <sup>2</sup> )	Water Injection (l/min)					Average of Water Injection : q (l/min)	Water Injection for 1 m : Q (l/min/m)	Water Pressure in Head (cm)			Effective Pressure : P (kgf/cm <sup>2</sup> )
	1	2	3	4	5			H = A+B+C-Hf	A+B+C	Hf	
1.0	2	3	3	3	4	3.00	0.60	1145	1145	0	1.15
	3	3	3	3	3						
4.0	5	6	6	5	5	5.50	1.10	4145	4145	0	4.15
	6	6	6	5	5						
7.0	9	10	10	12	12	11.38	2.28	6745	7145	400	6.75
	12	11	12	12	12						
10.0	16	15	16	15	15	15.13	3.03	8345	10145	1800	8.35
	15	15	15	15	15						
7.0	8	8	8	9	9	8.50	1.70	6745	7145	400	6.75
	9	8	9	9	8						
4.0	4	4	4	5	4	4.00	0.80	4145	4145	0	4.15
	4	4	4	4	4						
1.0	2	2	2	3	1	1.88	0.38	1145	1145	0	1.15
	2	2	1	2	2						

Lu=	-	Pc=	4.20
Lu'	2.1		

P-Q Curve

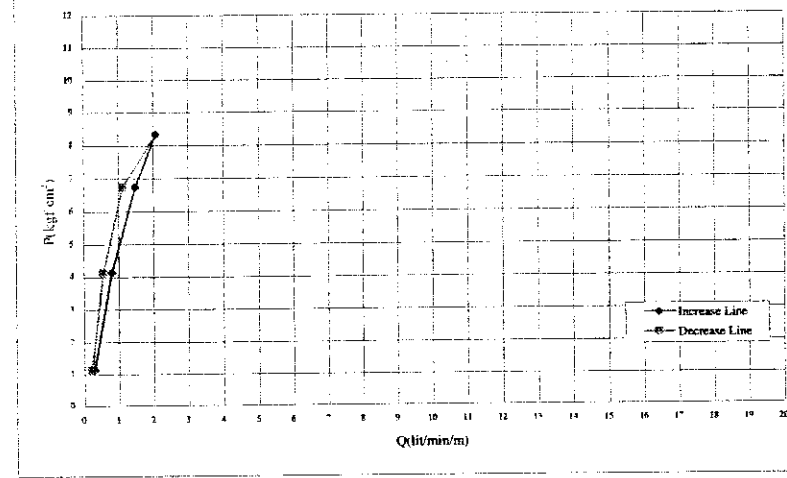


Project	WRDMM	Bore Hole No.	BH-AD-2	Date	5/16/2002
Depth (m)	( 60.00 - 65.00 )	Test Length (m)	5.00	Hole Radius (cm)	2.80
G.W.L. before day's work (m)	0.40	Pressure gauge height (m) : C/100	0.25		
G.W.L. before testing (m) : B/100	1.10	Packer NQ size (cm)	5.60		
Length (m) and Diameter (cm) of Rod	61.00 m	2.54 cm (φ)			
Length (m) and Diameter (cm) of Hose	12.00 m	2.54 cm (φ)			

Pressure gauge Reading : A/1000 (kgf/cm <sup>2</sup> )	Water Injection (l/min)					Average of Water Injection : q (l/min)	Water Injection for 1 m : Q (l/min/m)	Water Pressure in Head (cm)			Effective Pressure : P (kgf/cm <sup>2</sup> )
	1	2	3	4	5			H = A+B+C-Hf	A+B+C	Hf	
1.0	2	1	3	1	1	1.50	0.30	1135	1135	0	1.14
	1	1	3	2	2						
4.0	4	4	3	4	4	4.00	0.80	4135	4135	0	4.14
	4	4	4	4	4						
7.0	8	7	7	8	8	7.38	1.48	6735	7135	400	6.74
	7	7	8	7	7						
10.0	10	11	10	11	11	10.38	2.08	8335	10135	1800	8.34
	12	8	10	10	10						
7.0	5	6	5	6	6	5.63	1.12	6735	7135	400	6.74
	6	7	6	5	5						
4.0	3	3	3	2	2	2.75	0.55	4135	4135	0	4.14
	3	3	2	3	2						
1.0	2	1	0	0	2	1.13	0.23	1135	1135	0	1.14
	1	1	2	1	1						

Lu=	-	Pc=	5.80
Lu'	1.8		

P-Q Curve



G2-6

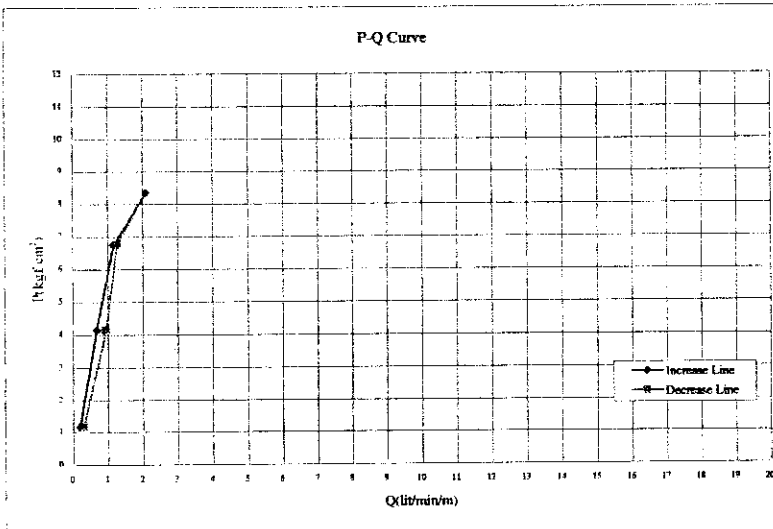
RECORD OF WATER PRESSURE TEST

BR AD-2 (18.00m)

Project	WRDMM	Bore Hole No.	BH-AD-2	Date	5/17/2002
Depth (m)	( 18.00 - 10.00 )	Test Length (m)	5.00	Hole Radius (cm)	3.80
G.W.L. before day's work (m)	0.40	Pressure gauge height (m) : C/100	0.25		
G.W.L. before testing (m) : B/100	1.20	Packer NQ size (cm)	5.60		
Length (m) and Diameter (cm) of Rod	66.00 m	2.54	cm (φ)		
Length (m) and Diameter (cm) of Hose	12.00 m	2.54	cm (φ)		

Pressure gauge Reading : A/1000 (kgf/cm <sup>2</sup> )	Water Injection (l/min)					Average of Water Injection : q (l/min)	Water Injection for 1 m : Q (l/min/m)	Water Pressure in Head (cm)			Effective Pressure : P (kgf/cm <sup>2</sup> )
	1	2	3	4	5			H = A+B+C-Hf	A+B+C	Hf	
1.0	1	1	0	1	2	1.00	0.20	1145	1145	0	1.15
4.0	3	3	4	4	3	3.38	0.68	4145	4145	0	4.15
7.0	6	5	6	7	6	5.88	1.18	6745	7145	400	6.75
10.0	10	10	11	10	10	10.50	2.10	8345	10145	1800	8.35
7.0	7	6	6	6	5	6.38	1.28	6745	7145	400	6.75
4.0	5	4	5	5	5	4.75	0.95	4145	4145	0	4.15
1.0	2	2	1	1	1	1.50	0.30	1145	1145	0	1.15

L <sub>0</sub> =	-	P <sub>C</sub> =	6.50
L <sub>u</sub> =	1.5		



G2-7

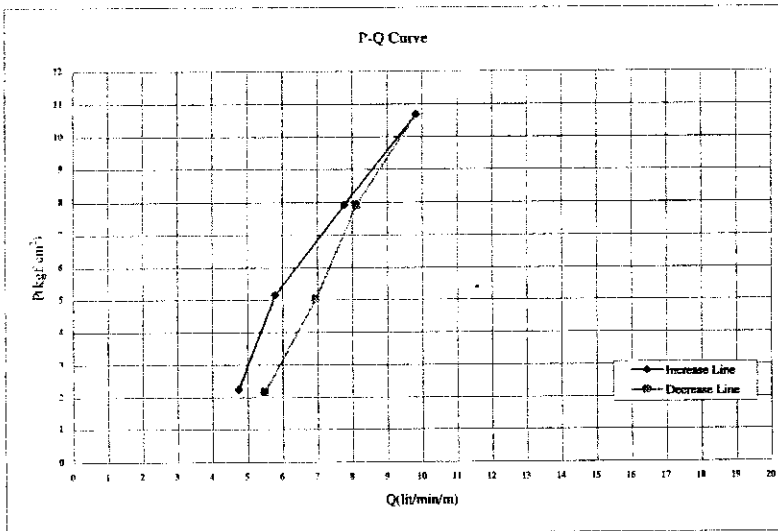


RECORD OF WATER PRESSURE TEST

Project	WRDMM	Bore Hole No.	BH-AD-3	Date	4/5/2002
Depth (m)	( 15.00 - 20.00 )	Test Length (m)	5.00	Hole Radius (cm)	3.80
G.W.L. before day's work (m)	17.00	Pressure gauge height (m) : C/100	0.35		
G.W.L. before testing (m) : B/100	14.00	Packer NQ size (cm)	7.00		
Length (m) and Diameter (cm) of Rod	16.00 m	3.20 cm (φ)			
Length (m) and Diameter (cm) of Hose	12.00 m	3.20 cm (φ)			

Pressure gauge Reading : A/1000 (kgf/cm <sup>2</sup> )	Water Injection (l/min)					Average of Water Injection : q (l/min)	Water Injection for 1 m : Q (l/min/m)	Water Pressure in Head (cm)			Effective Pressure : P (kgf/cm <sup>2</sup> )
	1	2	3	4	5			H=A+B+C-Hf			
	6	7	8	9	10			H	A+B+C	Hf	
1.0	24	23	24	24	24	23.75	4.75	2225	2435	210	2.23
4.0	28	30	27	28	28	29.00	5.80	5145	5435	290	5.15
7.0	38	39	38	38	40	38.88	7.78	7925	8435	510	7.93
10.0	40	39	39	40	38	40.13	9.83	10685	11435	750	10.69
7.0	40	41	40	42	41	40.63	8.13	7915	8435	520	7.92
4.0	34	35	34	34	35	34.75	6.95	5029	5435	406	5.03
1.0	27	28	27	27	28	27.50	5.50	2155	2435	280	2.16

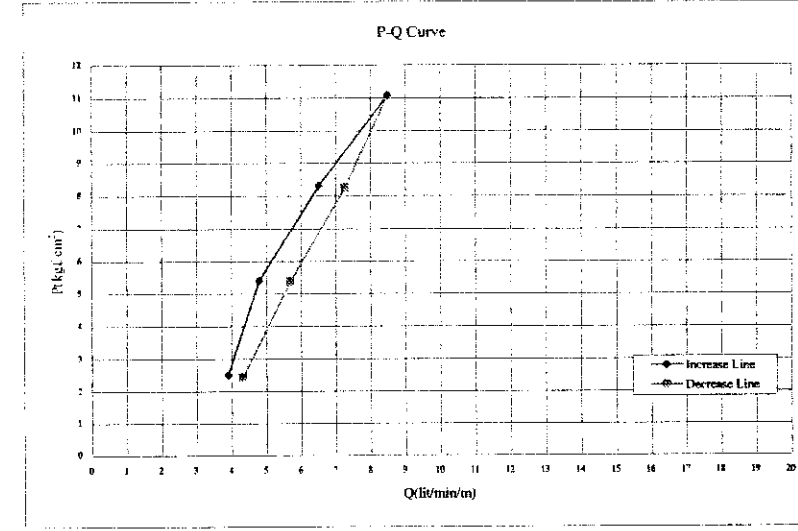
L <sub>u</sub> =	-	P <sub>c</sub> =	5.20
L <sub>u</sub> '=	7.5		



Project	WRDMM	Bore Hole No.	BH-AD-3	Date	4/6/2002
Depth (m)	( 20.00 - 25.00 )	Test Length (m)	5.00	Hole Radius (cm)	3.50
G.W.L. before day's work (m)	18.20	Pressure gauge height (m) : C/100	0.35		
G.W.L. before testing (m) : B/100	16.50	Packer NQ size (cm)	7.00		
Length (m) and Diameter (cm) of Rod	21.00 m	3.20 cm (φ)			
Length (m) and Diameter (cm) of Hose	12.00 m	3.20 cm (φ)			

Pressure gauge Reading : A/1000 (kgf/cm <sup>2</sup> )	Water Injection (l/min)					Average of Water Injection : q (l/min)	Water Injection for 1 m : Q (l/min/m)	Water Pressure in Head (cm)			Effective Pressure : P (kgf/cm <sup>2</sup> )
	1	2	3	4	5			H=A+B+C-Hf			
	6	7	8	9	10			H	A+B+C	Hf	
1.0	20	19	20	20	20	19.50	3.90	2495	2685	190	2.50
4.0	23	25	24	24	23	24.00	4.80	5405	5685	280	5.41
7.0	32	32	33	32	33	32.63	6.53	8305	8685	380	8.31
10.0	42	42	42	42	43	42.50	8.50	11075	11685	610	11.08
7.0	46	37	36	36	37	36.38	7.28	8245	8685	440	8.25
4.0	28	28	29	28	29	28.50	5.70	5375	5685	310	5.38
1.0	22	22	21	22	21	21.63	4.33	2435	2685	250	2.44

L <sub>u</sub> =	-	P <sub>c</sub> =	6.10
L <sub>u</sub> '=	6.2		



G2-8

RECORD OF WATER PRESSURE TEST

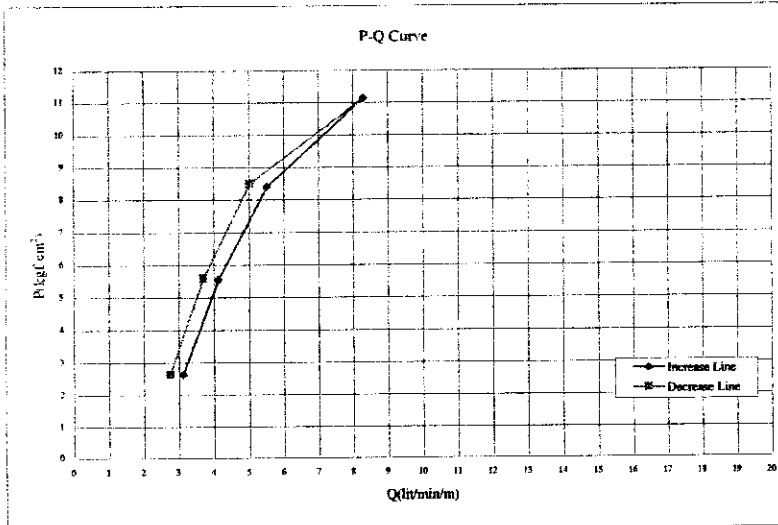
BRADY 10/10/02

Project	WRDM	Bore Hole No.	BH-AD-3	Date	4/6/2002
Depth (m)	( 25.00 - 30.00 )	Test Length (m)	5.00	Hole Radius (cm)	3.50
G.W.L. before day's work (m)	18.50	Pressure gauge height (m) : C/100	0.35		
G.W.L. before testing (m) : B/100	17.00	Packer NQ size (cm)	7.00		
Length (m) and Diameter (cm) of Rod	26.00 m	3.20 cm (φ)			
Length (m) and Diameter (cm) of Hose	12.00 m	3.20 cm (φ)			

Pressure gauge Reading : A/1000 (kgf/cm <sup>2</sup> )	Water Injection (l/min)					Average of Water Injection : q (l/min)	Water Injection for 1 m : Q (l/min/m)	Water Pressure in Head (cm)			Effective Pressure : P (kgf/cm <sup>2</sup> )
	1	2	3	4	5			H = A+B+C-Hf	A+B+C	Hf	
1.0	14	16	16	15	16	15.63	3.13	2615	2735	120	2.62
4.0	20	21	20	21	20	20.63	4.13	5555	5735	180	5.56
7.0	28	27	27	28	28	27.63	5.53	8395	8735	340	8.40
10.0	42	40	41	41	42	41.50	8.30	11135	11735	600	11.14
7.0	25	26	25	24	24	25.13	5.03	8495	8735	240	8.50
4.0	19	18	19	19	18	18.50	3.70	5595	5735	140	5.60
1.0	13	14	14	13	14	13.75	2.75	2625	2735	110	2.63

L<sub>1</sub>= - P<sub>c</sub>= 7.80  
L<sub>2</sub>= 5.6



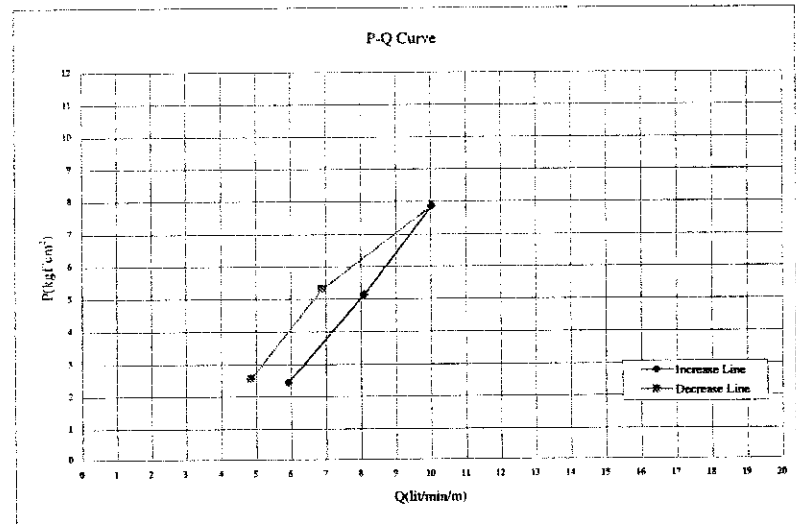
BRADY 10/10/02

Project	WRDM	Bore Hole No.	BH-AD-3	Date	4/9/2002
Depth (m)	( 30.00 - 35.00 )	Test Length (m)	5.00	Hole Radius (cm)	3.50
G.W.L. before day's work (m)	18.20	Pressure gauge height (m) : C/100	0.35		
G.W.L. before testing (m) : B/100	17.60	Packer NQ size (cm)	7.00		
Length (m) and Diameter (cm) of Rod	31.00 m	3.20 cm (φ)			
Length (m) and Diameter (cm) of Hose	12.00 m	3.20 cm (φ)			

Pressure gauge Reading : A/1000 (kgf/cm <sup>2</sup> )	Water Injection (l/min)					Average of Water Injection : q (l/min)	Water Injection for 1 m : Q (l/min/m)	Water Pressure in Head (cm)			Effective Pressure : P (kgf/cm <sup>2</sup> )
	1	2	3	4	5			H = A+B+C-Hf	A+B+C	Hf	
1.0	31	29	29	29	30	29.63	5.93	2435	2795	360	2.44
4.0	41	40	40	41	41	40.50	8.10	5135	5795	660	5.14
7.0	49	49	50	51	51	50.13	10.03	7855	8795	940	7.86
4.0	35	34	35	35	35	34.50	6.90	5205	5795	490	5.31
1.0	25	24	25	25	24	24.25	4.85	2545	2795	250	2.55

L<sub>1</sub>= - P<sub>c</sub>= -  
L<sub>2</sub>= 12.0



G2-9

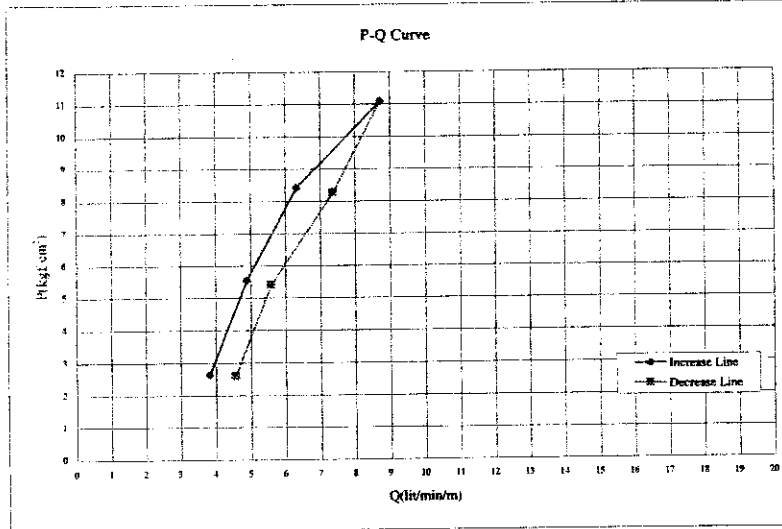
RECORD OF WATER PRESSURE TEST

Project	WRDMM	Bore Hole No.	BH-AD-3	Date	4/11/2002
Depth (m)	( 35.00 - 39.00 )	Test Length (m)	4.80	Hole Radius (cm)	3.50
G.W.L. before day's work (m)	18.50	Pressure gauge height (m) : C/100	0.35		
G.W.L. before testing (m) : B/100	17.80	Packer NQ size (cm)	7.00		
Length (m) and Diameter (cm) of Rod	36.00 m	3.20 cm (φ)			
Length (m) and Diameter (cm) of Hose	12.00 m	3.20 cm (φ)			

Pressure gauge Reading : A/1000 (kgf/cm <sup>2</sup> )	Water Injection (l/min)					Average of Water Injection : q (l/min)	Water Injection for 1 m : Q (l/min/m)	Water Pressure in Head (cm)			Effective Pressure : P (kgf/cm <sup>2</sup> )
	1	2	3	4	5			H	A+B+C	Hf	
1.0	19	18	19	19	19	18.38	3.83	2635	2815	180	2.64
	18	18	18	18	18						
	22	24	21	22	24						
	24	24	24	24	24						
	31	31	33	30	30						
4.0	30	31	30	30	30	23.50	4.90	5535	5815	280	5.54
	41	40	40	42	43						
	43	42	42	42	43						
	35	36	35	35	36						
	35	35	36	35	36						
7.0	27	27	26	27	27	30.38	6.33	8405	8815	410	8.41
	43	42	42	42	43						
	41	40	40	40	40						
	35	36	35	35	36						
	35	35	36	35	36						
10.0	27	27	26	27	27	41.88	8.72	11095	11815	720	11.10
	43	42	42	42	43						
	39	40	40	40	40						
	25	26	25	24	24						
	25	25	25	25	25						
7.0	19	18	18	17	17	35.38	7.37	8265	8815	550	8.27
	27	27	26	27	27						
	26	27	28	27	27						
	21	21	20	22	22						
	22	22	22	23	23						
4.0	21	21	20	22	22	26.88	5.60	5410	5815	405	5.41
	27	27	26	27	27						
	26	27	28	27	27						
	21	21	20	22	22						
	22	22	22	23	23						
1.0	22	22	22	23	23	21.88	4.56	2995	2815	220	2.60
	19	18	19	19	19						
	18	18	18	18	18						
	22	24	21	22	24						
	24	24	24	24	24						

L<sub>10</sub>= 7.80  
L<sub>10</sub>'= 6.5

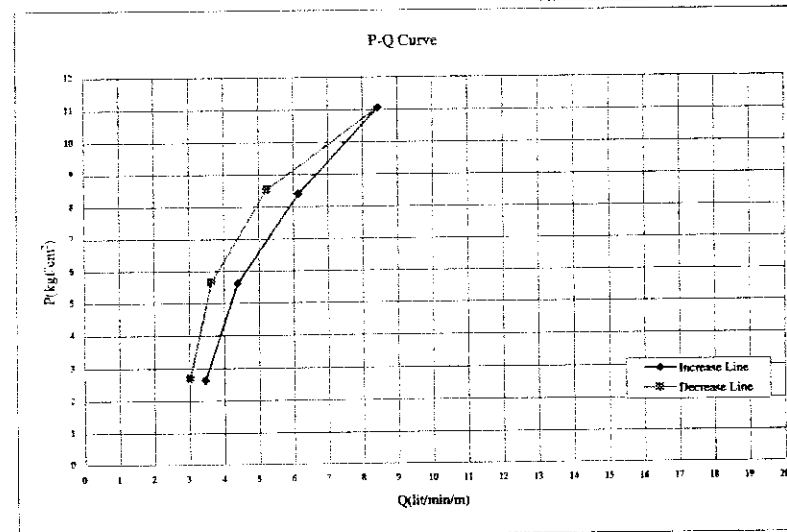


Project	WRDMM	Bore Hole No.	BH-AD-3	Date	4/11/2002
Depth (m)	( 40.00 - 44.75 )	Test Length (m)	4.75	Hole Radius (cm)	3.50
G.W.L. before day's work (m)	18.50	Pressure gauge height (m) : C/100	0.35		
G.W.L. before testing (m) : B/100	18.00	Packer NQ size (cm)	7.00		
Length (m) and Diameter (cm) of Rod	41.00 m	3.20 cm (φ)			
Length (m) and Diameter (cm) of Hose	12.00 m	3.20 cm (φ)			

Pressure gauge Reading : A/1000 (kgf/cm <sup>2</sup> )	Water Injection (l/min)					Average of Water Injection : q (l/min)	Water Injection for 1 m : Q (l/min/m)	Water Pressure in Head (cm)			Effective Pressure : P (kgf/cm <sup>2</sup> )
	1	2	3	4	5			H	A+B+C	Hf	
1.0	15	17	17	16	17	16.38	3.45	2635	2835	200	2.64
	17	16	16	16	16						
	21	20	21	22	21						
	21	21	20	21	21						
	29	30	29	29	29						
4.0	27	29	29	30	30	20.88	4.39	5605	5835	230	5.61
	43	41	40	41	39						
	39	40	40	40	40						
	25	26	25	24	24						
	25	25	25	25	25						
7.0	19	18	18	17	17	29.25	6.16	8385	8835	450	8.39
	27	27	26	27	27						
	26	27	28	27	27						
	21	21	20	22	22						
	22	22	22	23	23						
10.0	27	27	26	27	27	40.13	8.45	11055	11835	780	11.06
	43	42	42	42	43						
	39	40	40	40	40						
	25	26	25	24	24						
	25	25	25	25	25						
7.0	19	18	18	17	17	24.88	5.34	8515	8835	320	8.52
	27	27	26	27	27						
	26	27	28	27	27						
	21	21	20	22	22						
	22	22	22	23	23						
4.0	17	17	16	17	17	17.25	3.63	5655	5835	180	5.66
	14	13	15	14	14						
	14	14	15	15	15						
	14	14	15	15	15						
	14	14	15	15	15						

L<sub>10</sub>= 6.80  
L<sub>10</sub>'= 5.8



G2-10



RECORD OF WATER PRESSURE TEST

Project	WRDMM	Bore Hole No.	BH-AD-4	Date	6/6/2002
Depth (m)	( 15.00 - 20.00 )	Test Length (m)	5.00	Hole Radius (cm)	3.50
G.W.L. before day's work (m)	12.00	Pressure gauge height (m) : C/100	0.25		
G.W.L. before testing (m) : B/100	6.20	Packer NQ size (cm)	7.00		
Length (m) and Diameter (cm) of Rod	16.00 m	3.20 cm (φ)			
Length (m) and Diameter (cm) of Hose	12.00 m	3.20 cm (φ)			

Pressure gauge Reading : A/1000 (kgf/cm <sup>2</sup> )	Water Injection (l/min)					Average of Water Injection : q (l/min)	Water Injection for 1 m : Q (l/min/m)	Water Pressure in Head (cm)			Effective Pressure : P (kgf/cm <sup>2</sup> )
	1	2	3	4	5			H = A+B+C-Hf	A+B+C	Hf	
1.0	11	12	12	12	11	11.63	2.33	1545	1645	100	1.55
4.0	15	15	14	15	16	15.25	3.05	4495	4645	150	4.50
7.0	21	22	21	21	21	21.50	4.30	7445	7645	200	7.45
10.0	28	28	28	29	29	28.50	5.70	10305	10645	340	10.31
7.0	19	19	17	19	18	18.63	3.73	7485	7645	160	7.49
4.0	11	11	12	12	11	11.50	2.30	4547	4645	98	4.55
1.0	8	7	7	6	6	6.88	1.38	1645	1645	0	1.65

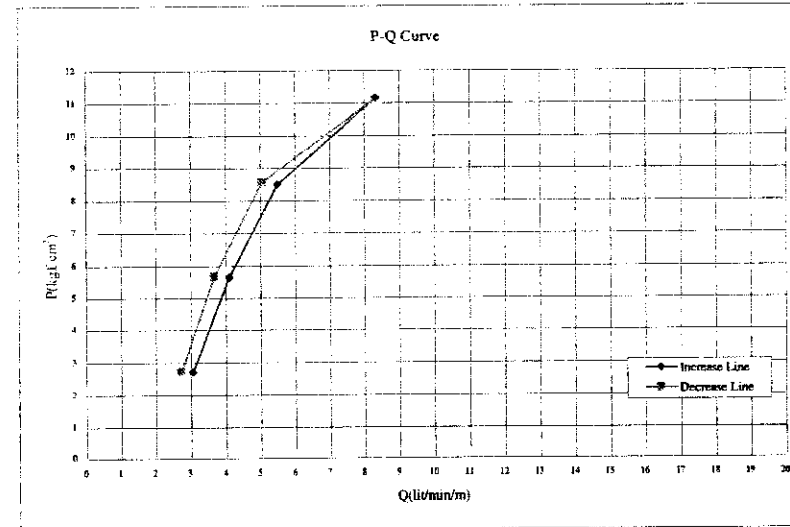
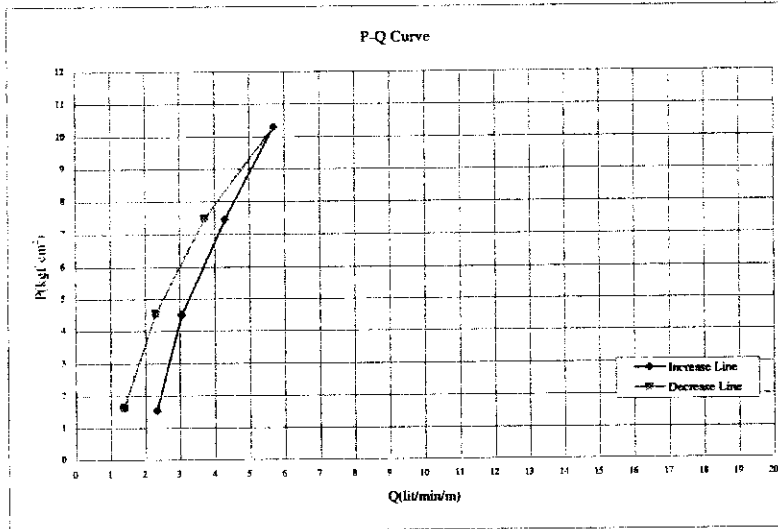
L <sub>10</sub> =	-	P <sub>C</sub> =	4.50
L <sub>15</sub> =	4.4		

Project	WRDMM	Bore Hole No.	BH-AD-4	Date	6/7/2002
Depth (m)	( 20.00 - 25.00 )	Test Length (m)	5.00	Hole Radius (cm)	3.50
G.W.L. before day's work (m)	22.50	Pressure gauge height (m) : C/100	0.50		
G.W.L. before testing (m) : B/100	18.00	Packer NQ size (cm)	7.00		
Length (m) and Diameter (cm) of Rod	21.00 m	3.20 cm (φ)			
Length (m) and Diameter (cm) of Hose	12.00 m	3.20 cm (φ)			

Pressure gauge Reading : A/1000 (kgf/cm <sup>2</sup> )	Water Injection (l/min)					Average of Water Injection : q (l/min)	Water Injection for 1 m : Q (l/min/m)	Water Pressure in Head (cm)			Effective Pressure : P (kgf/cm <sup>2</sup> )
	1	2	3	4	5			H = A+B+C-Hf	A+B+C	Hf	
1.0	15	14	16	15	15	15.25	3.05	2704	2850	146	2.70
4.0	21	20	20	21	21	20.50	4.10	5650	5850	200	5.65
7.0	27	28	27	27	28	27.50	5.50	8480	8850	370	8.48
10.0	42	42	41	42	41	41.63	8.33	11170	11850	680	11.17
7.0	24	25	25	26	25	25.25	5.05	8560	8850	290	8.56
4.0	18	18	18	18	19	18.38	3.68	5670	5850	180	5.67
1.0	14	13	13	14	14	13.63	2.73	2720	2850	130	2.72

L <sub>10</sub> =	-	P <sub>C</sub> =	7.80
L <sub>15</sub> =	5.7		



G2-12

RECORD OF WATER PRESSURE TEST

Project		WRDMM	Bore Hole No.	BH-AD-4	Date	6/4/2002
Depth (m)	( 25.00 - 30.00 )	Test Length (m)	5.00	Hole Radius (cm)	3.50	
G.W.L. before day's work (m)	19.50	Pressure gauge height (m) : C/100	0.50			
G.W.L. before testing (m) : B/100	11.00	Packer NQ size (cm)	7.00			
Length (m) and Diameter (cm) of Rod	26.00 m	3.20 cm (φ)				
Length (m) and Diameter (cm) of Hose	12.00 m	3.20 cm (φ)				

Pressure gauge Reading : A/1000 (kgf/cm <sup>2</sup> )	Water Injection (l/min)					Average of Water Injection : q (l/min)	Water Injection for 1 m : Q (l/min/m)	Water Pressure in Head (cm)			Effective Pressure : P (kgf/cm <sup>2</sup> )
	1	2	3	4	5			H=A+B+C-Hf			
	6	7	8	9	10			H	A+B+C	Hf	
1.0	9	10	9	9	10	9.50	1.90	2150	2150	0	2.15
4.0	17	17	17	15	15	16.00	3.20	4990	5150	160	4.99
7.0	19	20	20	20	21	20.75	4.15	7950	8150	200	7.95
10.0	25	25	25	26	26	25.50	5.10	10840	11150	310	10.84
7.0	15	16	16	16	17	16.25	3.25	7980	8150	170	7.98
4.0	10	10	10	12	12	10.75	2.15	5050	5150	100	5.05
1.0	6	6	7	7	5	6.00	1.20	2150	2150	0	2.15

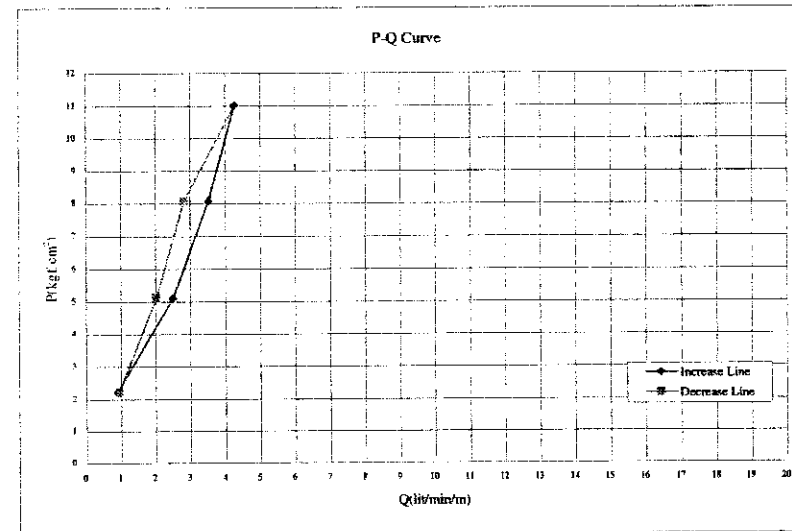
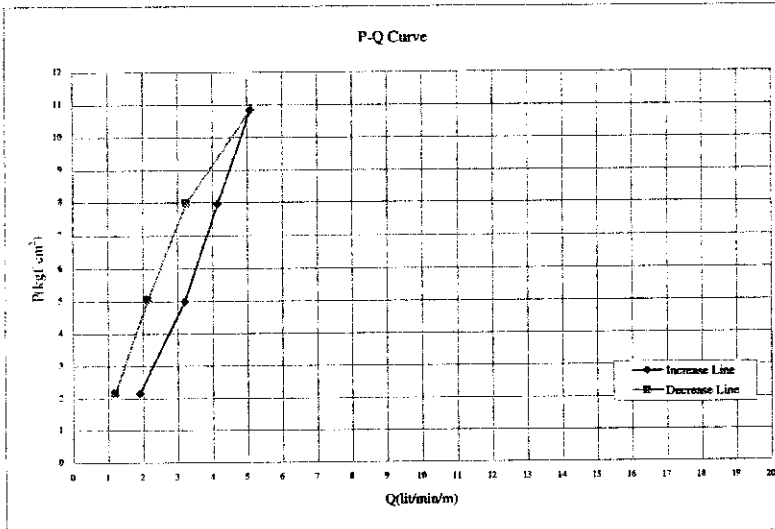
Lu= - Pc= -  
Lu= 5.6

Project		WRDMM	Bore Hole No.	BH-AD-4	Date	6/4/2002
Depth (m)	( 30.00 - 35.00 )	Test Length (m)	5.00	Hole Radius (cm)	3.50	
G.W.L. before day's work (m)	19.80	Pressure gauge height (m) : C/100	0.25			
G.W.L. before testing (m) : B/100	12.00	Packer NQ size (cm)	7.00			
Length (m) and Diameter (cm) of Rod	31.00 m	3.20 cm (φ)				
Length (m) and Diameter (cm) of Hose	12.00 m	3.20 cm (φ)				

Pressure gauge Reading : A/1000 (kgf/cm <sup>2</sup> )	Water Injection (l/min)					Average of Water Injection : q (l/min)	Water Injection for 1 m : Q (l/min/m)	Water Pressure in Head (cm)			Effective Pressure : P (kgf/cm <sup>2</sup> )
	1	2	3	4	5			H=A+B+C-Hf			
	6	7	8	9	10			H	A+B+C	Hf	
1.0	2	4	5	5	4	4.50	0.90	2225	2225	0	2.23
4.0	5	4	4	5	5	4.50	0.90	2225	2225	0	2.23
7.0	13	13	12	12	12	12.50	2.50	5105	5225	120	5.11
10.0	17	18	18	18	17	17.63	3.53	8065	8225	160	8.07
7.0	18	18	17	17	18	17.63	3.53	8065	8225	160	8.07
4.0	20	21	20	22	22	21.38	4.28	11005	11225	220	11.01
1.0	23	21	31	22	22	21.38	4.28	11005	11225	220	11.01
7.0	15	14	14	15	14	14.13	2.83	8075	8225	150	8.08
4.0	10	10	10	11	10	10.13	2.03	5115	5225	110	5.12
1.0	5	4	4	6	4	4.75	0.95	2225	2225	0	2.23

Lu= - Pc= -  
Lu= 5.2



RECORD OF WATER PRESSURE TEST

Project	WRDMM	Bore Hole No.	BH-AD-4	Date	6/4/2002
Depth (m)	( 35.00 - 40.00 )	Test Length (m)	5.00	Hole Radius (cm)	3.50
G.W.L. before day's work (m)	22.50	Pressure gauge height (m) : C/100	0.25		
G.W.L. before testing (m) : B/100	12.50	Packer NQ size (cm)	7.00		
Length (m) and Diameter (cm) of Rod	36.00 m	3.20 cm (φ)			
Length (m) and Diameter (cm) of Hose	12.00 m	3.20 cm (φ)			

Pressure gauge Reading : A/1000 (kgf/cm <sup>2</sup> )	Water Injection (l/min)					Average of Water Injection : q (l/min)	Water Injection for 1 m : Q (l/min/m)	Water Pressure in Head (cm)			Effective Pressure : P (kgf/cm <sup>2</sup> )
	1	2	3	4	5			H	A+B+C	Hf	
1.0	3	3	2	2	3	2.75	0.55	2275	2275	0	2.28
4.0	7	8	7	8	8	7.63	1.53	5275	5275	0	5.28
7.0	12	12	13	13	12	12.50	2.50	8125	8275	150	8.13
10.0	14	15	16	15	15	15.38	3.08	11095	11275	180	11.10
7.0	10	10	11	10	10	10.50	2.10	8135	8275	140	8.14
4.0	4	4	4	3	4	3.88	0.78	5275	5275	0	5.28
1.0	0	2	0	1	2	1.13	0.23	2275	2275	0	2.28

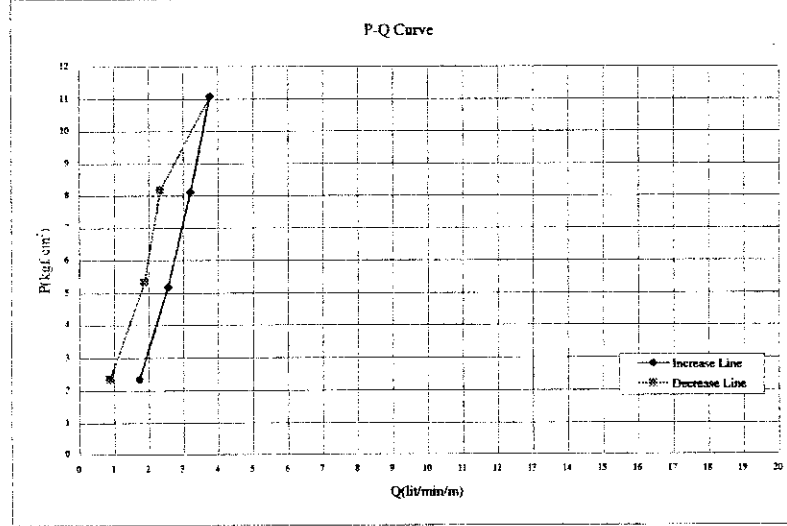
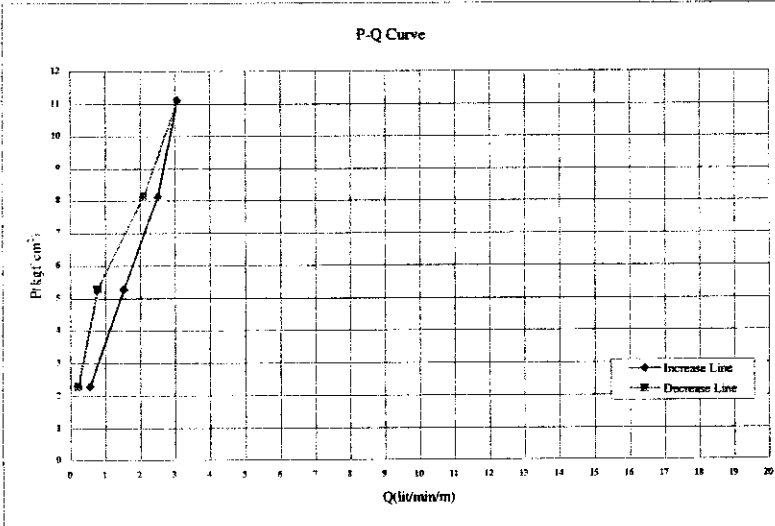
Lu= - Pc= -  
Lu= 3.1

Project	WRDMM	Bore Hole No.	BH-AD-4	Date	6/4/2002
Depth (m)	( 40.00 - 45.00 )	Test Length (m)	5.00	Hole Radius (cm)	3.50
G.W.L. before day's work (m)	22.50	Pressure gauge height (m) : C/100	0.25		
G.W.L. before testing (m) : B/100	13.00	Packer NQ size (cm)	7.00		
Length (m) and Diameter (cm) of Rod	41.00 m	3.20 cm (φ)			
Length (m) and Diameter (cm) of Hose	12.00 m	3.20 cm (φ)			

Pressure gauge Reading : A/1000 (kgf/cm <sup>2</sup> )	Water Injection (l/min)					Average of Water Injection : q (l/min)	Water Injection for 1 m : Q (l/min/m)	Water Pressure in Head (cm)			Effective Pressure : P (kgf/cm <sup>2</sup> )
	1	2	3	4	5			H	A+B+C	Hf	
1.0	8	8	9	8	9	8.63	1.73	2325	2325	0	2.33
4.0	13	13	13	14	13	13.75	2.55	5175	5325	150	5.18
7.0	16	16	16	17	16	16.00	3.20	8115	8325	210	8.12
10.0	19	19	19	18	19	18.88	3.78	11085	11325	240	11.09
7.0	12	11	12	11	12	11.63	2.33	8185	8325	140	8.19
4.0	9	9	10	10	10	9.38	1.88	5325	5325	0	5.33
1.0	4	4	4	4	5	4.38	0.88	2325	2325	0	2.33

Lu= - Pc= -  
Lu= 4.0



G2-14



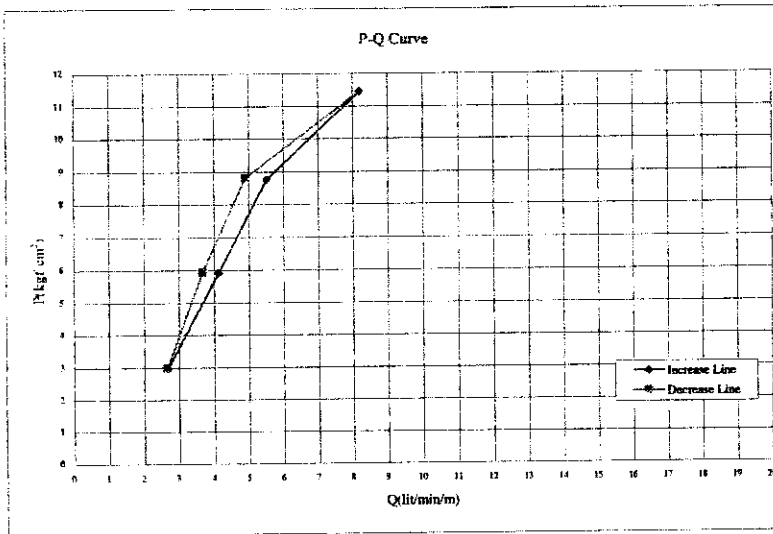


RECORD OF WATER PRESSURE TEST

Project	WRDMM	Bore Hole No.	BH-AD-5	Date	5/8/2002
Depth (m)	( 30.00 - 31.00 )	Test Length (m)	5.00	Hole Radius (cm)	3.50
G.W.L. before day's work (m)	21.15	Pressure gauge height (m) : C/100	0.50		
G.W.L. before testing (m) : B/100	20.50	Packer NQ size (cm)	7.00		
Length (m) and Diameter (cm) of Rod	31.00 m	3.20	cm ( $\phi$ )		
Length (m) and Diameter (cm) of Hose	12.00 m	3.20	cm ( $\phi$ )		

Pressure gauge Reading : A/1000 (kg/cm <sup>2</sup> )	Water Injection (l/min)					Average of Water Injection : q (l/min)	Water Injection for 1 m : Q (l/min/m)	Water Pressure in Head (cm)			Effective Pressure : P (kg/cm <sup>2</sup> )
	1	2	3	4	5			H=A+B+C-Hf			
	6	7	8	9	10			H	A+B+C	Hf	
1.0	14	13	13	14	14	13.38	2.68	2970	3100	130	2.97
4.0	20	21	21	20	21	20.63	4.13	5910	6100	190	5.91
7.0	28	28	27	28	27	27.63	5.53	8760	9100	340	8.76
10.0	42	42	41	41	40	41.00	8.20	11450	12100	650	11.45
7.0	26	25	25	24	24	24.50	4.90	8810	9100	290	8.81
4.0	18	18	19	18	19	18.38	3.68	5940	6100	160	5.94
1.0	13	13	14	13	13	13.25	2.65	2975	3100	125	2.98

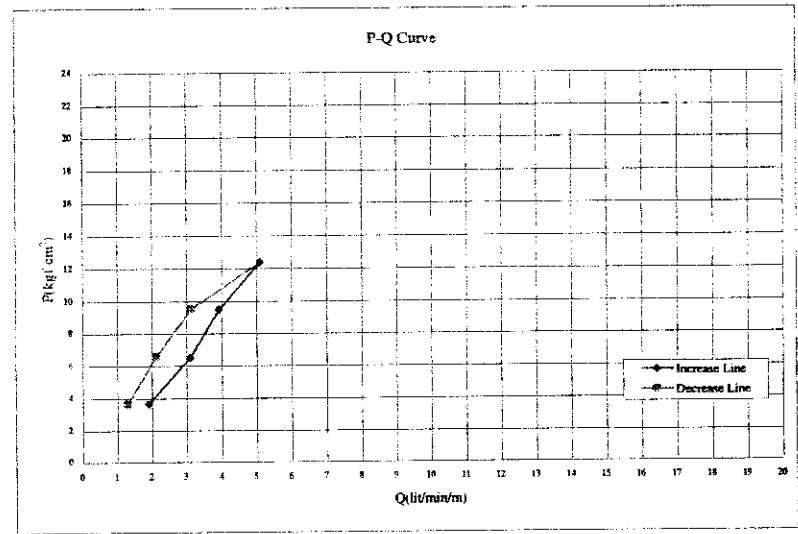
L <sub>u</sub> =	-	P <sub>c</sub> =	8.80
L <sub>u</sub> '=	6.2		



Project	WRDMM	Bore Hole No.	BH-AD-5	Date	5/9/2002
Depth (m)	( 35.00 - 40.00 )	Test Length (m)	5.00	Hole Radius (cm)	3.50
G.W.L. before day's work (m)	27.80	Pressure gauge height (m) : C/100	0.60		
G.W.L. before testing (m) : B/100	26.00	Packer NQ size (cm)	7.00		
Length (m) and Diameter (cm) of Rod	36.00 m	3.20	cm ( $\phi$ )		
Length (m) and Diameter (cm) of Hose	12.00 m	3.20	cm ( $\phi$ )		

Pressure gauge Reading : A/1000 (kg/cm <sup>2</sup> )	Water Injection (l/min)					Average of Water Injection : q (l/min)	Water Injection for 1 m : Q (l/min/m)	Water Pressure in Head (cm)			Effective Pressure : P (kg/cm <sup>2</sup> )
	1	2	3	4	5			H=A+B+C-Hf			
	6	7	8	9	10			H	A+B+C	Hf	
1.0	10	9	10	10	9	9.50	1.90	3660	3660	0	3.66
4.0	16	15	16	16	15	15.50	3.10	6520	6660	140	6.52
7.0	20	19	20	20	19	19.63	3.93	9480	9660	180	9.48
10.0	25	25	26	25	26	25.50	5.10	12380	12660	280	12.38
7.0	16	15	15	16	16	15.63	3.13	9510	9660	150	9.51
4.0	11	10	12	10	10	10.63	2.13	6570	6660	90	6.57
1.0	6	7	7	6	7	6.50	1.30	3660	3660	0	3.66

L <sub>u</sub> '=	4.5	P <sub>c</sub> '=	-
-------------------	-----	-------------------	---



G2-16

RECORD OF WATER PRESSURE TEST

BR AD-6 40-18 m

Project	WRDMM	Bore Hole No.	BH-AD-6	Date	5/9/2003
Depth (m)	( 45.00 - 45.00 )	Test Length (m)	5.00	Hole Radius (cm)	2.80
G.W.L. before day's work (m)	1.80	Pressure gauge height (m) : C/100	0.20		
G.W.L. before testing (m) : B/100	1.80	Packer NQ size (cm)	5.60		
Length (m) and Diameter (cm) of Rod	41.00 m	2.54 cm (φ)			
Length (m) and Diameter (cm) of Hose	12.00 m	2.54 cm (φ)			

Pressure gauge Reading : A/1000 (kgf/cm <sup>2</sup> )	Water Injection (l/min)					Average of Water Injection : q (l/min)	Water Injection for 1 m : Q (l/min/m)	Water Pressure in Head (cm)			Effective Pressure : P (kgf/cm <sup>2</sup> )
	1	2	3	4	5			H=A+B+C-Hf			
	6	7	8	9	10			H	A+B+C	Hf	
1.0	11	10	12	11	11	11.50	2.30	1110	1200	90	1.11
	12	12	11	12	12						
4.0	17	19	19	19	19	18.75	3.75	4060	4200	140	4.06
	20	19	19	18	18						
7.0	31	32	31	33	32	31.13	6.23	6890	7300	310	6.89
	31	30	30	31	31						
10.0	45	45	44	45	44	44.50	8.90	9620	10200	580	9.62
	25	26	27	26	25						
7.0	25	26	26	27	26	25.88	5.18	6950	7200	250	6.95
	15	15	14	14	15						
4.0	15	15	15	15	14	14.75	2.95	4080	4200	120	4.08
	8	7	10	7	8						
1.0	8	9	8	8	8	8.00	1.60	1200	1200	0	1.20

L <sub>u</sub> =	-	P <sub>C</sub> =	4.00
L <sub>u</sub> '=	6.7		

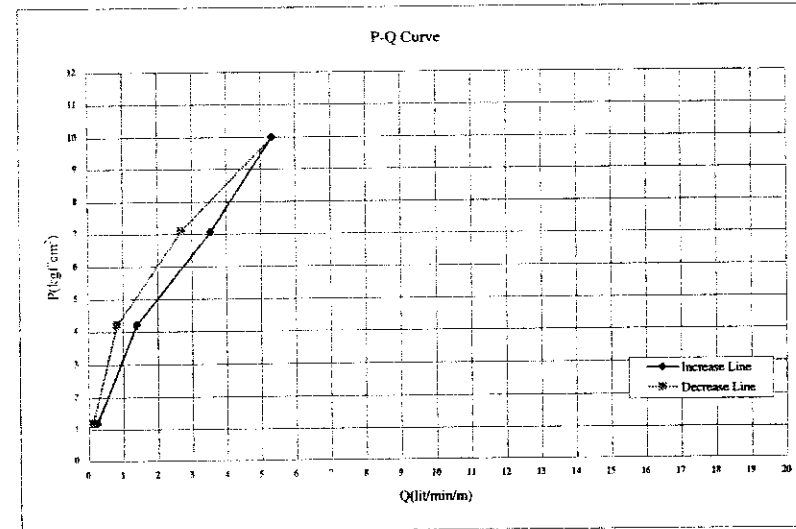
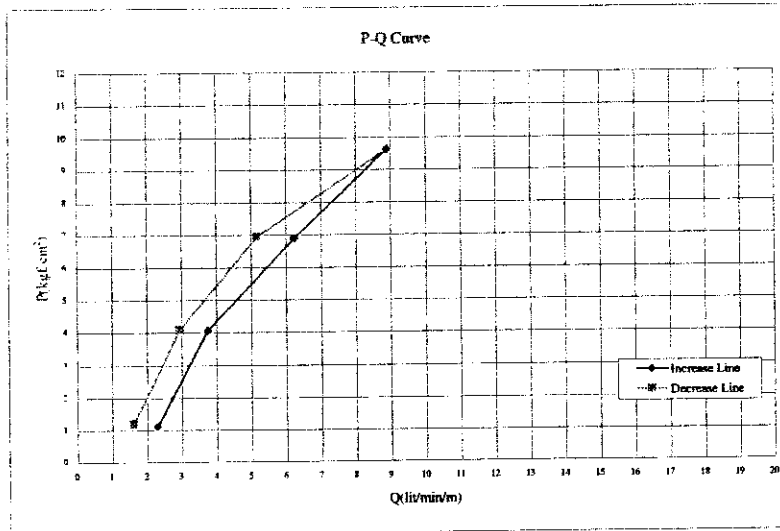
BR AD-6 40-18 m

Project	WRDMM	Bore Hole No.	BH-AD-6	Date	6/28/2002
Depth (m)	( 45.00 - 50.00 )	Test Length (m)	5.00	Hole Radius (cm)	2.80
G.W.L. before day's work (m)	1.80	Pressure gauge height (m) : C/100	0.20		
G.W.L. before testing (m) : B/100	1.80	Packer NQ size (cm)	5.60		
Length (m) and Diameter (cm) of Rod	46.00 m	2.54 cm (φ)			
Length (m) and Diameter (cm) of Hose	12.00 m	2.54 cm (φ)			

Pressure gauge Reading : A/1000 (kgf/cm <sup>2</sup> )	Water Injection (l/min)					Average of Water Injection : q (l/min)	Water Injection for 1 m : Q (l/min/m)	Water Pressure in Head (cm)			Effective Pressure : P (kgf/cm <sup>2</sup> )
	1	2	3	4	5			H=A+B+C-Hf			
	6	7	8	9	10			H	A+B+C	Hf	
1.0	0	1	1	2	1	1.25	0.25	1200	1200	0	1.20
	2	2	1	1	1						
4.0	8	7	8	7	7	7.00	1.40	4200	4200	0	4.20
	6	7	7	6	7						
7.0	19	17	17	18	19	17.75	3.55	7070	7200	130	7.07
	18	18	17	18	17						
10.0	28	27	27	26	26	26.63	5.33	9980	10200	220	9.98
	27	26	27	26	27						
7.0	14	14	15	14	13	13.50	2.70	7100	7200	100	7.10
	13	13	13	14	13						
4.0	3	4	4	4	5	4.13	0.83	4200	4200	0	4.20
	4	4	4	4	4						
1.0	0	1	0	1	1	0.63	0.13	1200	1200	0	1.20
	0	0	1	1	1						

L <sub>u</sub> =	-	P <sub>C</sub> =	4.20
L <sub>u</sub> '=	3.6		

G2-17



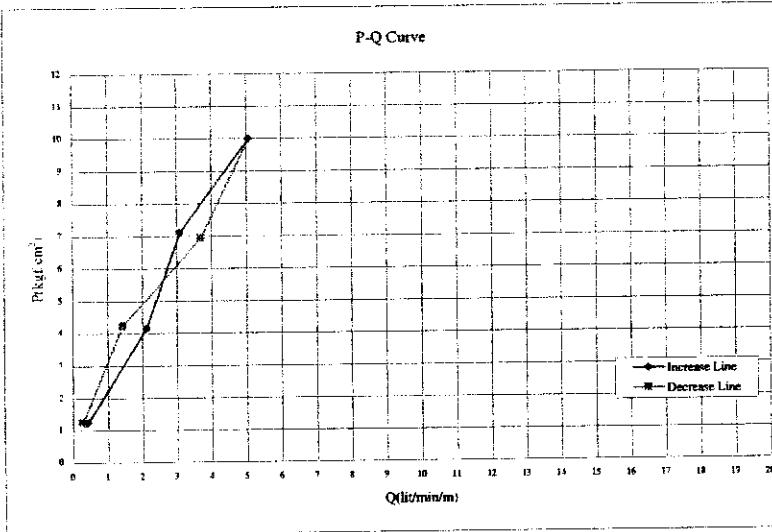
RECORD OF WATER PRESSURE TEST

Project	WRDMM	Bore Hole No.	BH-AD-6	Date	6/29/2002
Depth (m)	( 50.00 - 55.00 )	Test Length (m)	5.00	Hole Radius (cm)	2.80
G.W.L. before day's work (m)	1.80	Pressure gauge height (m) : C/100	0.20		
G.W.L. before testing (m) : B/100	2.10	Packer NQ size (cm)	5.60		
Length (m) and Diameter (cm) of Rod	51.00 m	2.54 cm (φ)			
Length (m) and Diameter (cm) of Hose	12.00 m	2.54 cm (φ)			

Pressure gauge Reading : A/1000 (kgf/cm <sup>2</sup> )	Water Injection (l/min)					Average of Water Injection : q (l/min)	Water Injection for 1 m : Q (l/min/m)	Water Pressure in Head (cm) H=A+B+C-Hf			Effective Pressure : P (kgf/cm <sup>2</sup> )
	1	2	3	4	5			H	A+B+C	Hf	
1.0	1	2	2	2	2	2.13	0.43	1230	1230	0	1.23
4.0	10	11	10	11	11	10.63	2.13	4140	4230	90	4.14
7.0	15	15	14	16	16	15.50	3.10	7100	7230	130	7.10
10.0	16	16	16	15	15	25.38	5.08	9990	10230	240	9.99
7.0	19	19	19	18	19	18.50	3.70	6930	7230	300	6.93
4.0	7	8	7	7	7	7.13	1.43	4230	4230	0	4.23
1.0	1	2	1	1	1	1.38	0.28	1230	1230	0	1.23

L <sub>u</sub>	5.0	P <sub>0</sub>	-
L <sub>u'</sub>	-		

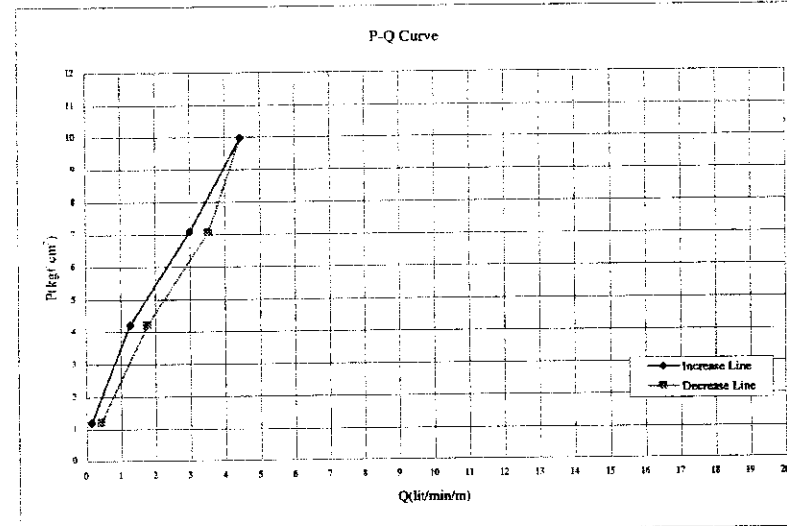


Project	WRDMM	Bore Hole No.	BH-AD-6	Date	7/1/2002
Depth (m)	( 55.00 - 60.00 )	Test Length (m)	5.00	Hole Radius (cm)	2.80
G.W.L. before day's work (m)	1.80	Pressure gauge height (m) : C/100	0.20		
G.W.L. before testing (m) : B/100	1.90	Packer NQ size (cm)	5.60		
Length (m) and Diameter (cm) of Rod	56.00 m	2.54 cm (φ)			
Length (m) and Diameter (cm) of Hose	12.00 m	2.54 cm (φ)			

Pressure gauge Reading : A/1000 (kgf/cm <sup>2</sup> )	Water Injection (l/min)					Average of Water Injection : q (l/min)	Water Injection for 1 m : Q (l/min/m)	Water Pressure in Head (cm) H=A+B+C-Hf			Effective Pressure : P (kgf/cm <sup>2</sup> )
	1	2	3	4	5			H	A+B+C	Hf	
1.0	0	1	0	1	1	0.75	0.15	1210	1210	0	1.21
4.0	5	7	5	6	7	6.38	1.28	4210	4210	0	4.21
7.0	14	15	15	14	14	15.00	3.00	7080	7210	130	7.08
10.0	21	22	22	24	24	22.25	4.45	9980	10210	230	9.98
7.0	17	18	18	18	18	17.63	3.53	7060	7210	150	7.06
4.0	9	10	10	9	9	8.88	1.78	4210	4210	0	4.21
1.0	2	2	2	2	2	2.13	0.43	1210	1210	0	1.21

L <sub>u</sub>	-	P <sub>0</sub>	4.20
L <sub>u'</sub>	3.5		



G2-18

RECORD OF WATER PRESSURE TEST

Project	WRDMM	Bore Hole No.	BH-AD-6	Date	7/1/2002
Depth (m)	( 00.00 - 05.00 )	Test Length (m)	5.00	Hole Radius (cm)	2.80
G.W.L. before day's work (m)	1.80	Pressure gauge height (m) : C/100	0.30		
G.W.L. before testing (m) : B/100	1.80	Packer NQ size (cm)	5.60		
Length (m) and Diameter (cm) of Rod	61.00 m	2.54 cm (φ)			
Length (m) and Diameter (cm) of Hose	12.00 m	2.54 cm (φ)			

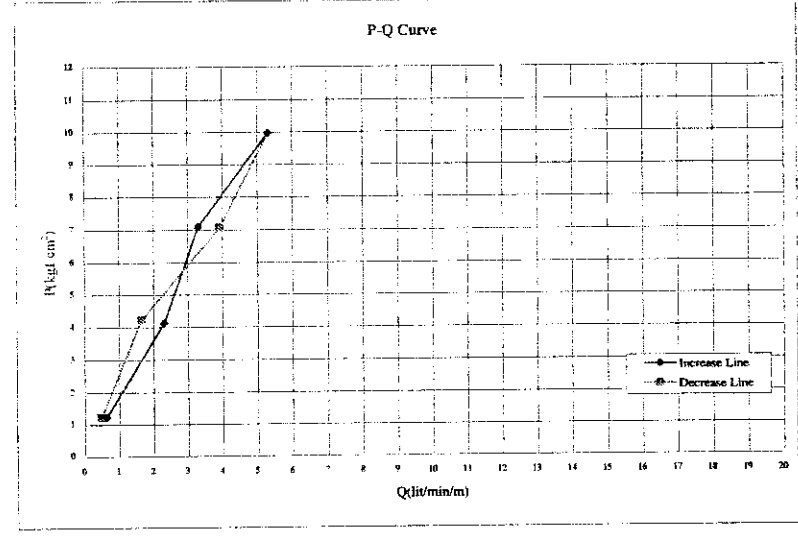
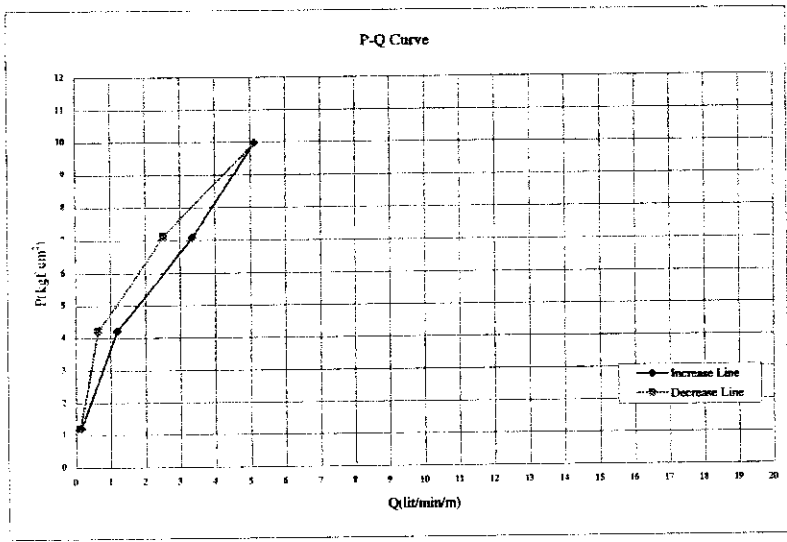
Pressure gauge Reading : A/1000 (kg/cm <sup>2</sup> )	Water Injection (l/min)					Average of Water Injection : q (l/min)	Water Injection for 1 m : Q (l/min/m)	Water Pressure in Head (cm)			Effective Pressure : P (kgf/cm <sup>2</sup> )
	1	2	3	4	5			H=A+B+C-Hf			
	6	7	8	9	10			H	A+B+C	Hf	
1.0	0	1	1	0	1	0.75	0.15	1210	1210	0	1.21
	1	0	2	1	1						
4.0	7	6	7	6	6	6.00	1.20	4210	4210	0	4.21
	5	6	6	5	6						
7.0	18	16	16	17	18	16.75	3.35	7084	7210	126	7.08
	17	17	16	17	16						
10.0	27	26	26	25	25	25.63	5.13	9970	10210	240	9.97
	26	25	26	25	26						
7.0	13	13	14	13	12	12.63	2.53	7112	7210	98	7.11
	12	13	12	13	13						
4.0	2	3	3	4	4	3.25	0.65	4210	4210	0	4.21
	3	3	4	3	3						
1.0	0	1	1	0	1	0.63	0.13	1210	1210	0	1.21
	1	0	0	1	1						

L <sub>u</sub> =	-	P <sub>0</sub> =	4.20
L <sub>u</sub> '=	3.3		

Project	WRDMM	Bore Hole No.	BH-AD-6	Date	7/3/2002
Depth (m)	( 05.00 - 10.00 )	Test Length (m)	5.00	Hole Radius (cm)	2.80
G.W.L. before day's work (m)	1.80	Pressure gauge height (m) : C/100	0.50		
G.W.L. before testing (m) : B/100	1.80	Packer NQ size (cm)	5.60		
Length (m) and Diameter (cm) of Rod	66.00 m	2.54 cm (φ)			
Length (m) and Diameter (cm) of Hose	12.00 m	2.54 cm (φ)			

Pressure gauge Reading : A/1000 (kg/cm <sup>2</sup> )	Water Injection (l/min)					Average of Water Injection : q (l/min)	Water Injection for 1 m : Q (l/min/m)	Water Pressure in Head (cm)			Effective Pressure : P (kgf/cm <sup>2</sup> )
	1	2	3	4	5			H=A+B+C-Hf			
	6	7	8	9	10			H	A+B+C	Hf	
1.0	4	4	3	3	3	3.13	0.63	1230	1230	0	1.23
	2	3	3	3	3						
4.0	13	12	11	12	12	11.50	2.30	4130	4230	100	4.13
	11	11	12	12	11						
7.0	16	16	15	17	17	16.50	3.30	7090	7230	140	7.09
	17	17	17	16	16						
10.0	27	27	28	26	27	26.63	5.33	9980	10230	250	9.98
	26	27	27	26	26						
7.0	19	20	20	19	20	19.63	3.93	7070	7230	160	7.07
	20	20	19	20	19						
4.0	8	9	8	8	8	8.25	1.65	4230	4230	0	4.23
	9	8	8	9	8						
1.0	2	3	2	2	2	2.38	0.48	1230	1230	0	1.23
	3	3	2	3	2						

L <sub>u</sub> =	5.3	P <sub>0</sub> =	-
L <sub>u</sub> '=	-		



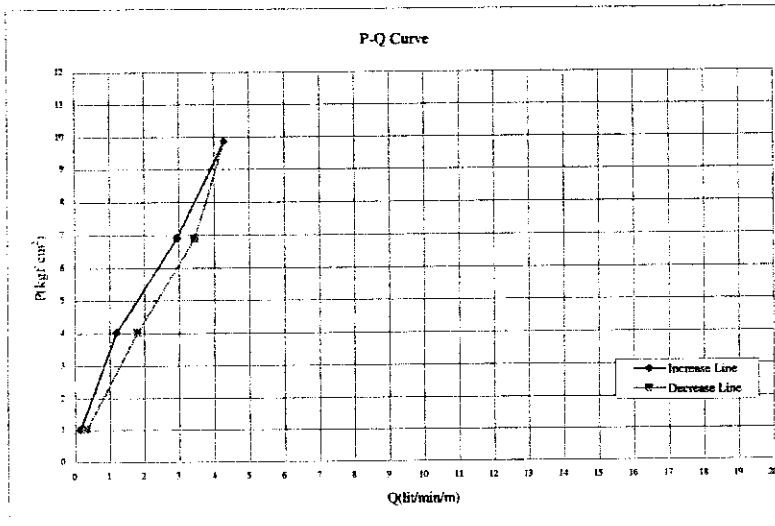
G2-19

RECORD OF WATER PRESSURE TEST

Project	WRDMM	Bore Hole No.	BH BD-1	Date	8/20/2002
Depth (m)	( 30.00 - 35.00 )	Test Length (m)	5.00	Hole Radius (cm)	3.50
G.W.L. before day's work (m)	0.00	Pressure gauge height (m) : C/100	0.20		
G.W.L. before testing (m) : B/100	0.00	Packer NQ size (cm)	7.00		
Length (m) and Diameter (cm) of Rod	31.00 m	2.54 cm (φ)			
Length (m) and Diameter (cm) of Hose	10.00 m	2.54 cm (φ)			

Pressure gauge Reading : A/1000 (kgf/cm <sup>2</sup> )	Water Injection (l/min)					Average of Water Injection : q (l/min)	Water Injection for 1 m : Q (l/min/m)	Water Pressure in Head (cm)			Effective Pressure : P (kgf/cm <sup>2</sup> )
	1	2	3	4	5			H = A+B+C-Hf	A+B+C	Hf	
1.0	1	0	1	1	1	0.75	0.15	1020	1020	0	1.02
4.0	5	6	6	5	7	6.00	1.20	4020	4030	0	4.02
7.0	14	15	15	14	14	14.75	2.95	6900	7020	120	6.90
10.0	15	16	16	15	14	21.50	4.30	9850	10020	170	9.85
7.0	16	15	17	18	17	17.25	3.45	6890	7020	130	6.89
4.0	9	8	8	10	9	9.00	1.80	4020	4020	0	4.02
1.0	2	1	2	2	1	1.63	0.33	1020	1020	0	1.02

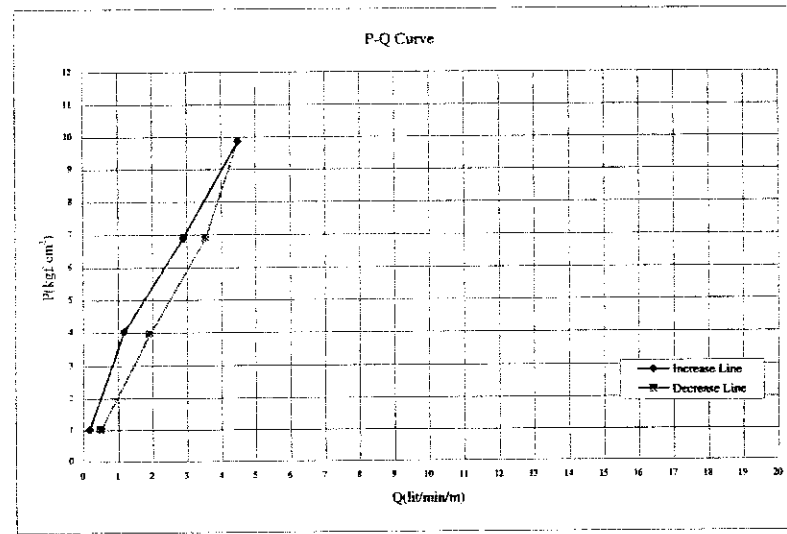
L <sub>w</sub> =	-	P <sub>C</sub> =	4.00
L <sub>e</sub> =	3.3		



Project	WRDMM	Bore Hole No.	BH BD-1	Date	8/21/2002
Depth (m)	( 35.00 - 40.00 )	Test Length (m)	5.00	Hole Radius (cm)	3.50
G.W.L. before day's work (m)	0.00	Pressure gauge height (m) : C/100	0.20		
G.W.L. before testing (m) : B/100	0.00	Packer NQ size (cm)	7.00		
Length (m) and Diameter (cm) of Rod	36.00 m	2.54 cm (φ)			
Length (m) and Diameter (cm) of Hose	10.00 m	2.54 cm (φ)			

Pressure gauge Reading : A/1000 (kgf/cm <sup>2</sup> )	Water Injection (l/min)					Average of Water Injection : q (l/min)	Water Injection for 1 m : Q (l/min/m)	Water Pressure in Head (cm)			Effective Pressure : P (kgf/cm <sup>2</sup> )
	1	2	3	4	5			H = A+B+C-Hf	A+B+C	Hf	
1.0	1	1	1	0	1	0.88	0.18	1020	1020	0	1.02
4.0	5	6	6	5	6	5.88	1.18	4020	4020	0	4.02
7.0	15	14	14	16	15	14.50	2.90	6910	7020	110	6.91
10.0	22	23	22	23	22	22.50	4.50	9860	10020	160	9.86
7.0	18	18	17	18	18	17.75	3.55	6890	7020	130	6.89
4.0	10	10	9	10	10	9.63	1.93	3950	4020	70	3.95
1.0	2	3	3	3	3	2.50	0.50	1020	1020	0	1.02

L <sub>w</sub> =	-	P <sub>C</sub> =	4.00
L <sub>e</sub> =	3.2		



G2-20

RECORD OF WATER PRESSURE TEST

Project	WRDMM	Bore Hole No.	BH BD-1	Date	8/21/2002
Depth (m)	( 40.00 - 45.00 )	Test Length (m)	5.00	Hole Radius (cm)	3.50
G.W.L. before day's work (m)	0.00	Pressure gauge height (m) : C/100	0.20		
G.W.L. before testing (m) : B/100	0.00	Packer NQ size (cm)	7.00		
Length (m) and Diameter (cm) of Rod	41.00 m	2.54 cm (φ)			
Length (m) and Diameter (cm) of Hose	10.00 m	2.54 cm (φ)			

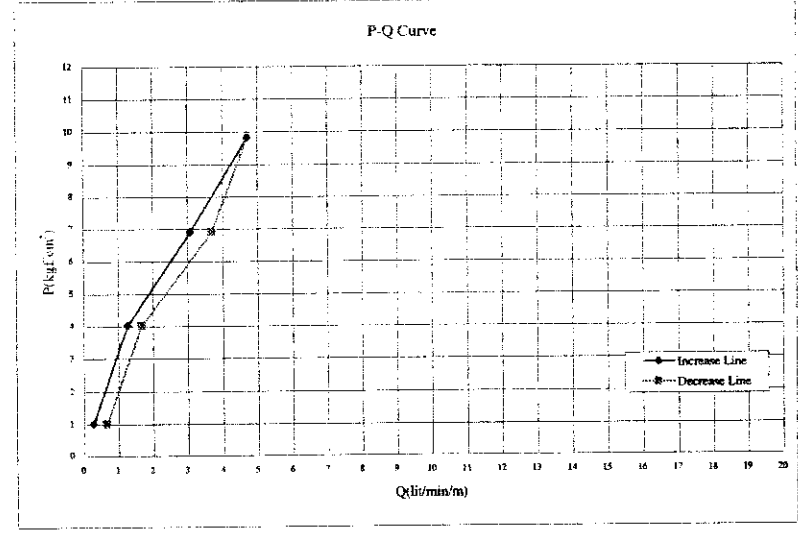
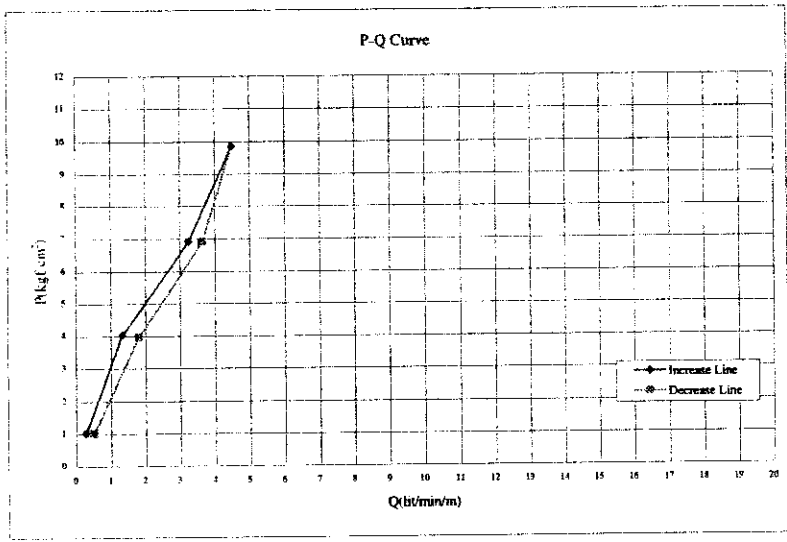
Pressure gauge Reading : A/1000 (kg/cm <sup>2</sup> )	Water Injection (l/min)					Average of Water Injection : q (l/min)	Water Injection for 1 m : Q (l/min/m)	Water Pressure in Head (cm)			Effective Pressure : P (kg/cm <sup>2</sup> )
	1	2	3	4	5			H	A+B+C	Hf	
1.0	1	1	1	1	1	1.38	0.28	1020	1020	0	1.02
4.0	6	7	7	6	7	6.63	1.33	4020	4020	0	4.02
7.0	16	17	16	16	17	16.25	3.25	6900	7020	120	6.90
10.0	23	22	22	23	22	22.50	4.50	9840	10020	180	9.84
7.0	18	18	19	18	18	18.25	3.65	6890	7020	130	6.89
4.0	10	9	8	8	9	9.00	1.80	3950	4020	70	3.95
1.0	3	3	2	3	1	2.50	0.50	1020	1020	0	1.02

L <sub>u</sub> =	-	P <sub>c</sub> =	4.00
L <sub>u</sub> '=	3.5		

Project	WRDMM	Bore Hole No.	BH BD-1	Date	8/22/2002
Depth (m)	( 45.00 - 50.00 )	Test Length (m)	5.00	Hole Radius (cm)	3.50
G.W.L. before day's work (m)	0.00	Pressure gauge height (m) : C/100	0.20		
G.W.L. before testing (m) : B/100	0.00	Packer NQ size (cm)	7.00		
Length (m) and Diameter (cm) of Rod	46.00 m	2.54 cm (φ)			
Length (m) and Diameter (cm) of Hose	10.00 m	2.54 cm (φ)			

Pressure gauge Reading : A/1000 (kg/cm <sup>2</sup> )	Water Injection (l/min)					Average of Water Injection : q (l/min)	Water Injection for 1 m : Q (l/min/m)	Water Pressure in Head (cm)			Effective Pressure : P (kg/cm <sup>2</sup> )
	1	2	3	4	5			H	A+B+C	Hf	
1.0	2	1	1	2	1	1.38	0.28	1020	1020	0	1.02
4.0	6	7	7	6	7	6.38	1.38	4020	4020	0	4.02
7.0	16	15	15	16	15	15.38	3.08	6910	7020	110	6.91
10.0	23	24	24	23	24	23.63	4.73	9830	10020	190	9.83
7.0	18	19	18	19	18	18.50	3.70	6900	7020	120	6.90
4.0	9	8	8	9	9	8.38	1.68	4020	4020	0	4.02
1.0	3	3	4	3	3	3.25	0.65	1020	1020	0	1.02

L <sub>u</sub> =	-	P <sub>c</sub> =	4.00
L <sub>u</sub> '=	3.3		



G2-21

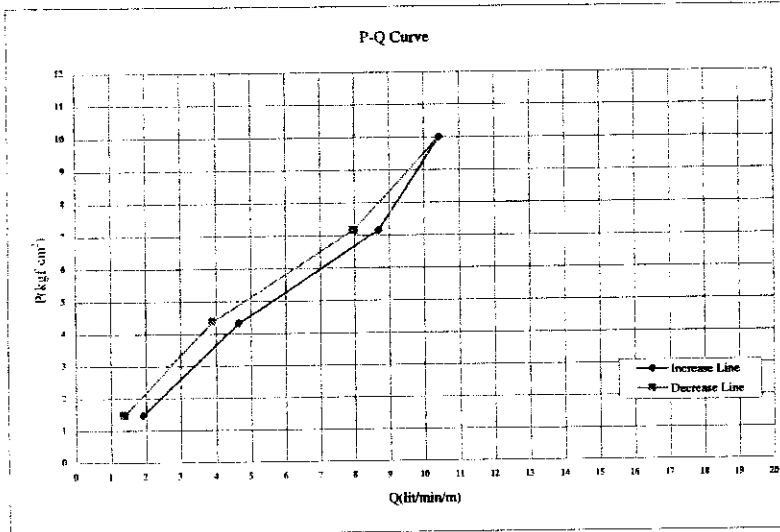
RECORD OF WATER PRESSURE TEST

WB 001-1, 01-01-04

Project	WRDMM	Bore Hole No.	BH BD-2	Date	8/15/2002
Depth (m)	( 31.00 - 35.00 )	Test Length (m)	4.00	Hole Radius (cm)	3.50
G.W.L. before day's work (m)	5.40	Pressure gauge height (m) : C/100	0.20		
G.W.L. before testing (m) : B/100	4.50	Packer NQ size (cm)	7.00	NQ	
Length (m) and Diameter (cm) of Rod	32.00 m	3.20	cm ( $\phi$ )		
Length (m) and Diameter (cm) of Hose	10.00 m	2.54	cm ( $\phi$ )		

Pressure gauge Reading : A/1000 (kgf/cm <sup>2</sup> )	Water Injection (l/min)					Average of Water Injection : q (l/min)	Water Injection for 1 m : Q (l/min/m)	Water Pressure in Head (cm)			Effective Pressure : P (kgf/cm <sup>2</sup> )
	1	2	3	4	5			H	A+B+C	Hf	
1.0	8	8	7	8	8	7.63	1.91	1470	1470	0	1.47
	8	8	6	7	7						
4.0	21	18	18	19	19	18.63	4.66	4320	4470	150	4.32
	18	19	19	19	18						
7.0	36	34	30	36	36	34.75	8.69	7150	7470	320	7.15
	35	35	34	34	34						
10.0	41	42	42	42	42	41.75	10.44	9990	10470	480	9.99
	42	42	42	41	41						
7.0	33	33	31	31	31	31.88	7.97	7170	7470	300	7.17
	33	32	32	31	32						
4.0	16	15	15	16	16	15.63	3.91	4370	4470	100	4.37
	16	15	15	16	16						
1.0	7	5	5	6	5	5.50	1.38	1470	1470	0	1.47
	6	6	5	6	5						

L <sub>w</sub> =	-	P <sub>c</sub> =	4.30
L <sub>w</sub> '=	10.1		

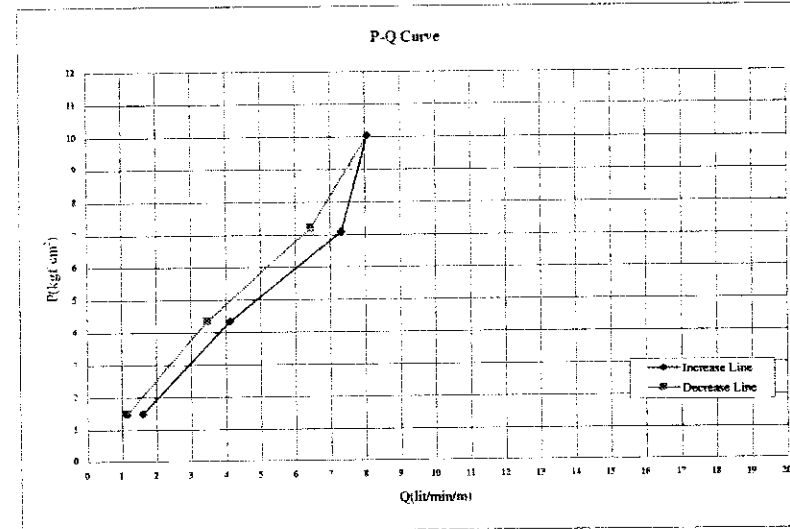


WB 001-2, 01-01-04

Project	WRDMM	Bore Hole No.	BH BD-2	Date	8/16/2002
Depth (m)	( 35.00 - 40.00 )	Test Length (m)	5.00	Hole Radius (cm)	3.50
G.W.L. before day's work (m)	5.40	Pressure gauge height (m) : C/100	0.20		
G.W.L. before testing (m) : B/100	4.70	Packer NQ size (cm)	7.00	NQ	
Length (m) and Diameter (cm) of Rod	36.00 m	3.20	cm ( $\phi$ )		
Length (m) and Diameter (cm) of Hose	10.00 m	2.54	cm ( $\phi$ )		

Pressure gauge Reading : A/1000 (kgf/cm <sup>2</sup> )	Water Injection (l/min)					Average of Water Injection : q (l/min)	Water Injection for 1 m : Q (l/min/m)	Water Pressure in Head (cm)			Effective Pressure : P (kgf/cm <sup>2</sup> )
	1	2	3	4	5			H	A+B+C	Hf	
1.0	9	8	8	8	9	8.00	1.60	1490	1490	0	1.49
	7	8	7	8	8						
4.0	20	21	21	20	21	20.63	4.13	4340	4490	150	4.34
	21	21	20	21	20						
7.0	37	36	37	36	37	36.63	7.33	7090	7490	400	7.09
	36	37	36	37	37						
10.0	40	41	40	41	40	40.38	8.08	10040	10490	450	10.04
	41	40	40	41	40						
7.0	32	32	33	33	32	32.25	6.45	7210	7490	280	7.21
	32	32	32	33	32						
4.0	19	17	18	18	18	17.38	3.48	4360	4490	130	4.36
	17	17	17	17	17						
1.0	7	5	6	6	6	5.75	1.15	1490	1490	0	1.49
	6	6	5	5	6						

L <sub>w</sub> =	-	P <sub>c</sub> =	4.30
L <sub>w</sub> '=	9.1		



RECORD OF WATER PRESSURE TEST

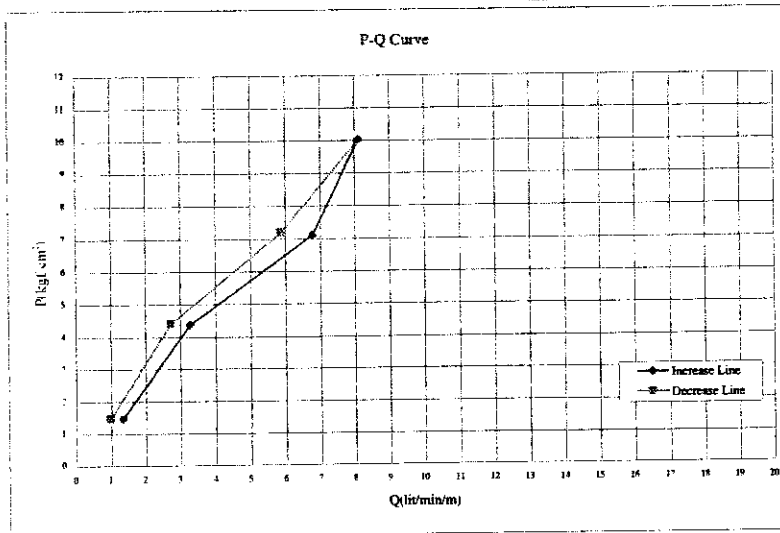
WPM-2 (10/1/02)

Project	WRDMM	Bore Hole No.	BH BD-2	Date	8/16/2002
Depth (m)	( 40.00 - 45.00 )	Test Length (m)	5.00	Hole Radius (cm)	3.50
G.W.L. before day's work (m)	5.40	Pressure gauge height (m) : C/100	0.20		
G.W.L. before testing (m) : B/100	4.50	Packer NQ size (cm)	7.00	NQ	
Length (m) and Diameter (cm) of Rod	41.00 m	3.20	cm ( $\phi$ )		
Length (m) and Diameter (cm) of Hose	10.00 m	2.54	cm ( $\phi$ )		

Pressure gauge Reading : A/1000 (kgf/cm <sup>2</sup> )	Water Injection (l/min)					Average of Water Injection : q (l/min)	Water Injection for 1 m : Q (l/min/m)	Water Pressure in Head (cm)			Effective Pressure : P (kgf/cm <sup>2</sup> )
	1	2	3	4	5			H	H=A+B+C	Hf	
1.0	6	7	7	6	7	6.63	1.33	1470	1470	0	1.47
	7	6	6	7	7						
4.0	16	16	16	16	17	16.38	3.28	4370	4470	100	4.37
	17	17	16	16	17						
7.0	35	35	34	34	33	33.88	6.78	7120	7470	350	7.12
	34	34	33	33	34						
10.0	41	41	40	41	41	40.63	8.13	10020	10470	450	10.02
	40	40	41	41	40						
7.0	30	30	29	29	29	29.38	5.88	7190	7470	280	7.19
	29	30	29	29	30						
4.0	14	13	13	14	14	13.63	2.73	4390	4470	80	4.39
	13	14	14	14	13						
1.0	5	5	4	4	5	4.88	0.98	1470	1470	0	1.47
	5	6	5	5	5						

L <sub>u</sub> =	-	P <sub>cu</sub> =	4.30
L <sub>u</sub> '=	7.1		

G2-23



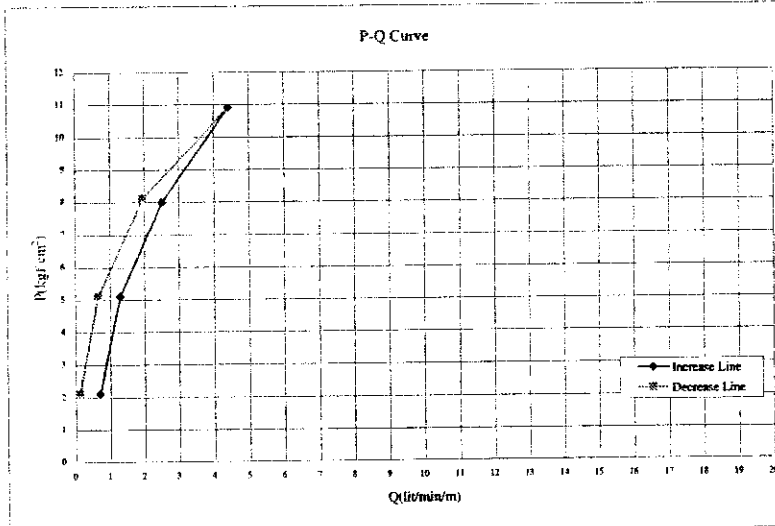


RECORD OF WATER PRESSURE TEST

Project	WRDMM	Bore Hole No.	BH BD-3	Date	7/11/2002
Depth (m)	( 15.00 - 20.00 )	Test Length (m)	5.00	Hole Radius (cm)	3.50
G.W.L. before day's work (m)	11.00	Pressure gauge height (m) : C/100	0.50		
G.W.L. before testing (m) : B/100	10.60	Packer NQ size (cm)	7.00		
Length (m) and Diameter (cm) of Rod	16.00 m	3.20 cm (φ)			
Length (m) and Diameter (cm) of Hose	12.00 m	3.20 cm (φ)			

Pressure gauge Reading : A/1000 (kgf/cm <sup>2</sup> )	Water Injection (l/min)					Average of Water Injection : q (l/min)	Water Injection for 1 m : Q (l/min/m)	Water Pressure in Head (cm) H=A+B+C-Hf			Effective Pressure : P (kgf/cm <sup>2</sup> )
	1	2	3	4	5			H	A+B+C	Hf	
1.0	3	4	4	3	3	3.50	0.70	2110	2110	0	2.11
4.0	6	7	7	6	6	6.50	1.30	5110	5110	0	5.11
7.0	12	13	13	12	12	12.50	2.50	7990	8110	120	7.99
10.0	22	21	23	22	23	22.13	4.43	10900	11110	210	10.90
7.0	11	10	9	10	10	9.75	1.95	8110	8110	0	8.11
4.0	4	3	3	3	4	3.25	0.65	5110	5110	0	5.11
1.0	1	0	2	1	0	0.63	0.13	2110	2110	0	2.11

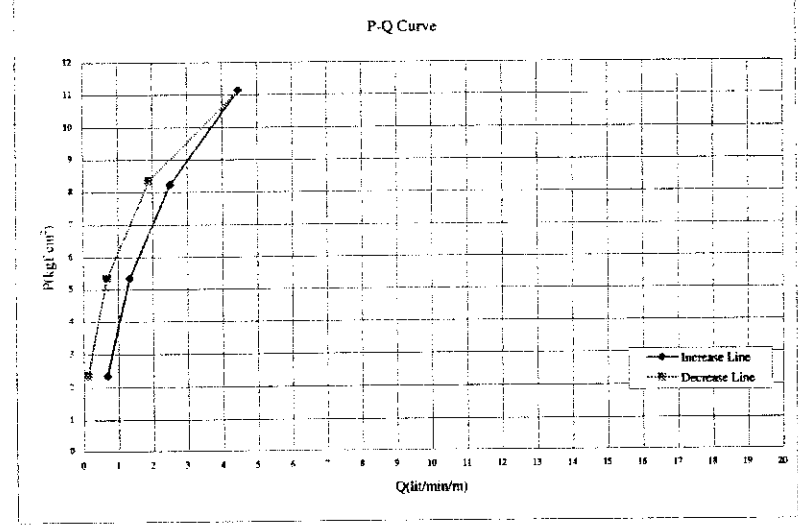
Lq = - Pq = 5.10  
Lu = 2.3



Project	WRDMM	Bore Hole No.	BH BD-3	Date	7/12/2002
Depth (m)	( 20.00 - 25.00 )	Test Length (m)	5.00	Hole Radius (cm)	3.50
G.W.L. before day's work (m)	13.30	Pressure gauge height (m) : C/100	0.50		
G.W.L. before testing (m) : B/100	13.00	Packer NQ size (cm)	7.00		
Length (m) and Diameter (cm) of Rod	21.00 m	3.20 cm (φ)			
Length (m) and Diameter (cm) of Hose	12.00 m	3.20 cm (φ)			

Pressure gauge Reading : A/1000 (kgf/cm <sup>2</sup> )	Water Injection (l/min)					Average of Water Injection : q (l/min)	Water Injection for 1 m : Q (l/min/m)	Water Pressure in Head (cm) H=A+B+C-Hf			Effective Pressure : P (kgf/cm <sup>2</sup> )
	1	2	3	4	5			H	A+B+C	Hf	
1.0	4	3	3	3	4	3.38	0.68	2350	2350	0	2.35
4.0	7	6	6	7	6	6.63	1.33	5350	5350	0	5.35
7.0	13	12	12	13	12	12.50	2.50	8230	8350	120	8.23
10.0	23	22	23	22	23	22.38	4.48	11140	11350	210	11.14
7.0	10	9	10	10	9	9.50	1.90	8350	8350	0	8.35
4.0	3	3	4	3	4	3.38	0.68	5350	5350	0	5.35
1.0	0	1	1	0	2	0.63	0.13	2350	2350	0	2.35

Lq = - Pq = 5.30  
Lu = 2.3



G2-24

RECORD OF WATER PRESSURE TEST

BH KD-1, 5.0/10.00

Project	WRDMM	Bore Hole No.	BH KD-1	Date	9/30/2002
Depth (m)	( 5.00 - 10.00 )	Test Length (m)	5.00	Hole Radius (cm)	3.50
G.W.L. before day's work (m)	1.75	Pressure gauge height (m) : C/100	0.20		
G.W.L. before testing (m) : B/100	1.50	Packer NQ size (cm)	7.00	NQ	
Length (m) and Diameter (cm) of Rod	6.00 m	2.54	cm ( $\phi$ )		
Length (m) and Diameter (cm) of Hose	8.00 m	2.54	cm ( $\phi$ )		

Pressure gauge Reading : A/1000 (kgf/cm <sup>2</sup> )	Water Injection (l/min)					Average of Water Injection : q (l/min)	Water Injection for 1 m : Q (l/min/m)	Water Pressure in Head (cm) H=A+B+C-Hf			Effective Pressure : P (kgf/cm <sup>2</sup> )
	1	2	3	4	5			H	A+B+C	Hf	
1.0	2	3	3	2	2	2.50	0.50	1170	1170	0	1.17
4.0	6	6	6	6	6	6.00	1.20	4170	4170	0	4.17
7.0	12	12	14	14	13	13.38	2.68	7090	7170	80	7.09
10.0	21	20	20	21	22	20.90	4.10	10020	10170	150	10.02
7.0	15	16	16	17	16	15.75	3.15	7070	7170	100	7.07
4.0	12	12	11	11	12	11.38	2.28	4080	4170	90	4.08
1.0	5	5	5	4	5	4.88	0.98	1170	1170	0	1.17

Lu= - Pc= 4.10  
Lu= 2.6

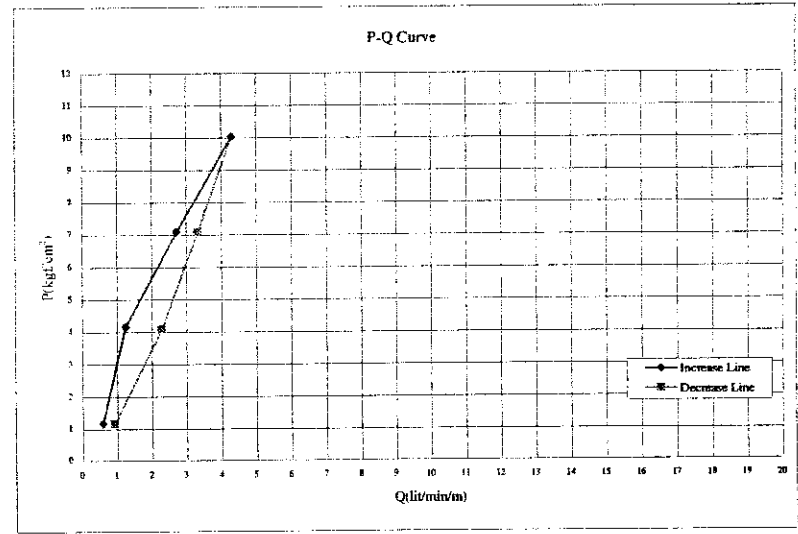
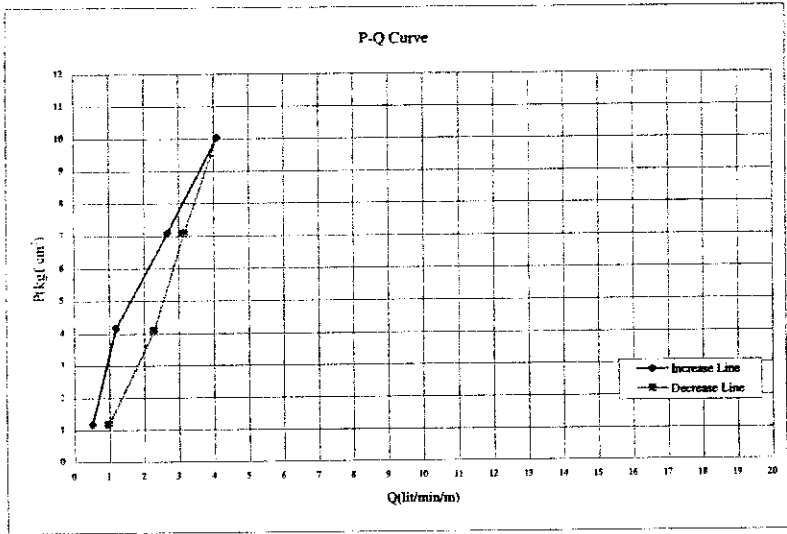
BH KD-1, 10.0/10.00

Project	WRDMM	Bore Hole No.	BH KD-1	Date	10/1/2002
Depth (m)	( 10.00 - 15.00 )	Test Length (m)	5.00	Hole Radius (cm)	3.50
G.W.L. before day's work (m)	1.75	Pressure gauge height (m) : C/100	0.20		
G.W.L. before testing (m) : B/100	1.50	Packer NQ size (cm)	7.00	NQ	
Length (m) and Diameter (cm) of Rod	11.00 m	2.54	cm ( $\phi$ )		
Length (m) and Diameter (cm) of Hose	8.00 m	2.54	cm ( $\phi$ )		

Pressure gauge Reading : A/1000 (kgf/cm <sup>2</sup> )	Water Injection (l/min)					Average of Water Injection : q (l/min)	Water Injection for 1 m : Q (l/min/m)	Water Pressure in Head (cm) H=A+B+C-Hf			Effective Pressure : P (kgf/cm <sup>2</sup> )
	1	2	3	4	5			H	A+B+C	Hf	
1.0	3	3	2	3	3	2.88	0.58	1170	1170	0	1.17
4.0	6	6	7	6	7	6.25	1.25	4170	4170	0	4.17
7.0	14	14	13	13	13	13.63	2.73	7090	7170	80	7.09
10.0	21	22	22	22	21	21.50	4.30	10020	10170	150	10.02
7.0	16	17	16	17	17	16.63	3.33	7070	7170	100	7.07
4.0	12	12	11	11	11	11.38	2.28	4080	4170	90	4.08
1.0	5	5	4	5	5	4.63	0.93	1170	1170	0	1.17

Lu= - Pc= 4.10  
Lu= 2.6



G2-25

RECORD OF WATER PRESSURE TEST

SRP/201-10-02-02

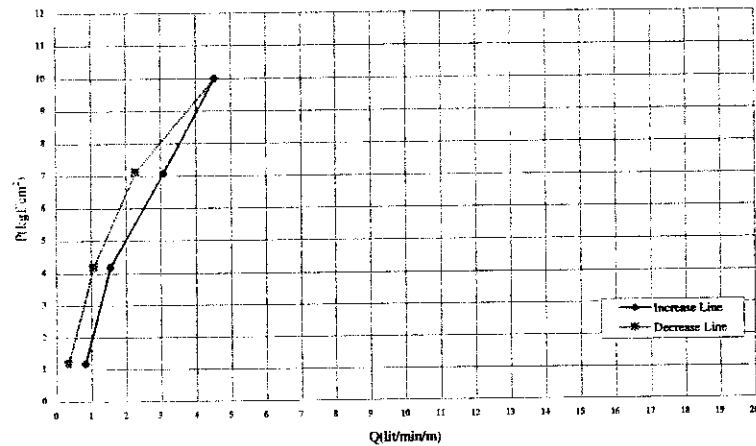
Project	WRDMM	Bore Hole No.	BH KD-1	Date	10/1/2002
Depth (m)	( 15.00 - 20.00 )	Test Length (m)	5.00	Hole Radius (cm)	3.50
G.W.L. before day's work (m)	1.75	Pressure gauge height (m) - C/100	0.20		
G.W.L. before testing (m) : B/100	1.60	Packet NQ size (cm)	7.00	NQ	
Length (m) and Diameter (cm) of Rod	16.00 m	2.54	cm ( $\phi$ )		
Length (m) and Diameter (cm) of Hose	8.00 m	2.54	cm ( $\phi$ )		

Pressure gauge Reading : A/1000 (kg/cm <sup>2</sup> )	Water Injection (l/min)					Average of Water Injection : q (l/min)	Water Injection for 1 m : Q (l/min/m)	Water Pressure in Head (cm)			Effective Pressure : P (kg/cm <sup>2</sup> )
	1	2	3	4	5			H A+B+C	Hf	H	
1.0	4	4	4	5	4	4.13	0.83	1180	1180	0	1.18
	5	4	4	4	4						
	8	8	8	7	8						
	7	8	8	8	7						
	15	16	15	15	16						
4.0	14	15	15	16	16	7.75	1.55	4180	4180	0	4.18
	23	23	23	23	23						
	23	21	23	21	23						
	11	11	11	12	11						
	12	11	11	12	12						
7.0	5	5	6	6	5	15.38	3.08	7080	7160	100	7.08
	5	6	6	5	5						
	2	2	1	2	2						
	1	2	2	1	2						
	2	2	1	2	2						
10.0	11	11	11	12	11	22.75	4.55	9990	10180	190	9.99
	12	11	11	12	12						
	5	5	6	6	5						
	5	6	6	5	5						
	2	2	1	2	2						
7.0	1	2	2	1	2	11.38	2.28	7110	7180	70	7.11
	5	5	6	6	5						
	5	6	6	5	5						
	2	2	1	2	2						
	1	2	2	1	2						
4.0	2	2	1	2	2	5.38	1.08	4180	4180	0	4.18
	1	2	2	1	2						
	2	2	1	2	2						
	1	2	2	1	2						
	2	2	1	2	2						
1.0	1	2	2	1	2	1.75	0.35	1180	1180	0	1.18
	1	2	2	1	2						
	2	2	1	2	2						
	1	2	2	1	2						
	2	2	1	2	2						

L <sub>u</sub> =	-	P <sub>c</sub> =	4.10
L <sub>d</sub> =	3.0		

G2-26

P-Q Curve



RECORD OF WATER PRESSURE TEST

Project	WRDMM	Bore Hole No.	BH KD-2	Date	9/25/2002
Depth (m)	( 5.00 - 10.00 )	Test Length (m)	5.00	Hole Radius (cm)	3.50
G.W.L. before day's work (m)	2.00	Pressure gauge height (m) : C/100	0.20		
G.W.L. before testing (m) : B/100	1.50	Packer NQ size (cm)	7.00	NQ	
Length (m) and Diameter (cm) of Rod	6.00 m	2.54 cm (φ)			
Length (m) and Diameter (cm) of Hose	8.00 m	2.54 cm (φ)			

Pressure gauge Reading : A/1000 (kgf/cm <sup>2</sup> )	Water Injection (l/min)					Average of Water Injection : q (l/min)	Water Injection for 1 m : Q (l/min/m)	Water Pressure in Head (cm)			Effective Pressure : P (kgf/cm <sup>2</sup> )
	1	2	3	4	5			H	A+B+C	Hf	
1.0	2	2	4	4	3	3.25	0.65	1170	1170	0	1.17
	3	3	4	4	3						
4.0	8	8	11	9	9	8.75	1.75	4110	4170	60	4.11
	8	9	9	9	9						
7.0	14	14	12	14	13	13.38	2.68	7060	7170	110	7.06
	14	13	13	13	13						
10.0	22	22	21	22	21	21.63	4.33	9990	10170	180	9.99
	22	21	22	22	21						
7.0	16	17	16	17	17	16.75	3.35	7050	7170	120	7.05
	17	17	17	17	16						
4.0	12	13	13	12	12	12.38	2.48	4080	4170	90	4.08
	13	12	12	13	12						
1.0	5	5	6	6	5	5.13	1.03	1170	1170	0	1.17
	5	5	4	5	5						

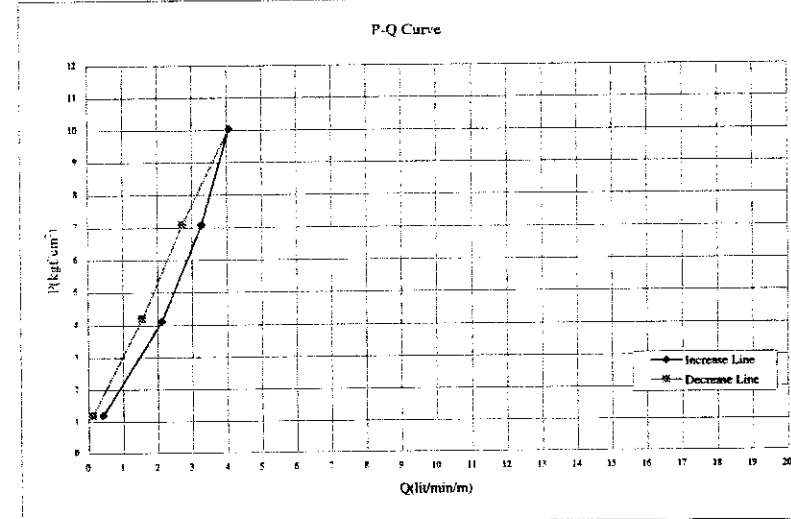
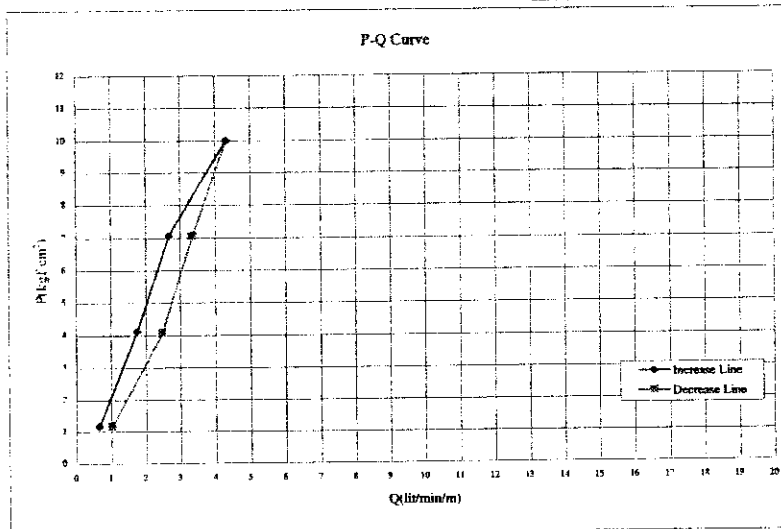
Lu=	-	Pc=	7.00
Lu'=	3.6		

Project	WRDMM	Bore Hole No.	BH KD-2	Date	9/26/2002
Depth (m)	( 10.00 - 15.00 )	Test Length (m)	5.00	Hole Radius (cm)	3.50
G.W.L. before day's work (m)	2.20	Pressure gauge height (m) : C/100	0.20		
G.W.L. before testing (m) : B/100	1.80	Packer NQ size (cm)	7.00	NQ	
Length (m) and Diameter (cm) of Rod	11.00 m	2.54 cm (φ)			
Length (m) and Diameter (cm) of Hose	8.00 m	2.54 cm (φ)			

Pressure gauge Reading : A/1000 (kgf/cm <sup>2</sup> )	Water Injection (l/min)					Average of Water Injection : q (l/min)	Water Injection for 1 m : Q (l/min/m)	Water Pressure in Head (cm)			Effective Pressure : P (kgf/cm <sup>2</sup> )
	1	2	3	4	5			H	A+B+C	Hf	
1.0	2	3	2	2	2	2.13	0.43	1200	1200	0	1.20
	3	2	2	2	3						
4.0	11	11	10	10	11	10.63	2.13	4120	4200	80	4.12
	10	10	11	11	11						
7.0	17	16	16	17	17	16.38	3.28	7070	7200	130	7.07
	16	16	16	17	16						
10.0	20	20	21	21	20	20.38	4.08	10040	10200	160	10.04
	21	20	20	20	21						
7.0	14	13	13	13	14	13.63	2.73	7090	7200	110	7.09
	14	14	13	14	14						
4.0	8	8	9	8	8	7.75	1.55	4200	4200	0	4.20
	7	8	8	7	7						
1.0	1	0	1	1	0	0.63	0.13	1200	1200	0	1.20
	1	0	0	1	1						

Lu=	-	Pc=	-
Lu=	5.5		

G2-27





RECORD OF WATER PRESSURE TEST

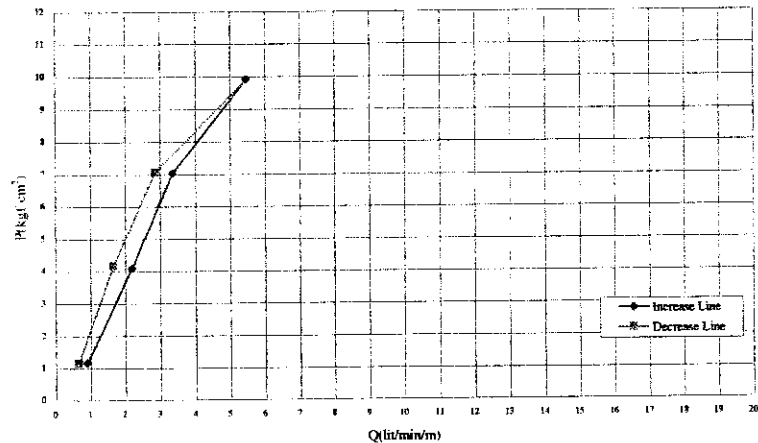
BH KD-3 10/12/02

Project	WRDMM	Bore Hole No.	BH KD-3	Date	9/30/2002
Depth (m)	( 5.00 - 10.00 )	Test Length (m)	5.00	Hole Radius (cm)	3.50
G.W.L. before day's work (m)	2.40	Pressure gauge height (m) : C/100	0.20		
G.W.L. before testing (m) : B/100	1.50	Packer NQ size (cm)	7.00	NQ	
Length (m) and Diameter (cm) of Rod	6.00 m	2.54	cm ( φ )		
Length (m) and Diameter (cm) of Hose	10.00 m	2.54	cm ( φ )		

Pressure gauge Reading : A/1000 (kgf/cm <sup>2</sup> )	Water Injection (l/min)					Average of Water Injection : q (l/min)	Water Injection for 1 m : Q (l/min/m)	Water Pressure in Head (cm)			Effective Pressure : P (kgf/cm <sup>2</sup> )
	1	2	3	4	5			H=A+B+C-Hf			
	6	7	8	9	10			H	A+B+C	Hf	
1.0	4	4	5	4	5	4.50	0.90	1170	1170	0	1.17
	5	4	4	5	5						
4.0	12	10	11	11	11	10.88	2.18	4090	4170	80	4.09
	11	11	11	10	11						
7.0	17	16	17	17	17	16.75	3.35	7040	7170	130	7.04
	17	16	17	17	16						
10.0	27	27	28	27	27	27.38	5.48	9920	10170	250	9.92
	27	27	28	28	28						
7.0	15	14	14	14	14	14.25	2.85	7060	7170	110	7.06
	14	15	15	14	14						
4.0	8	9	8	8	8	8.25	1.65	4170	4170	0	4.17
	8	9	8	8	9						
1.0	3	4	3	3	4	3.25	0.65	1170	1170	0	1.17
	3	3	3	3	5						

L <sub>u</sub> =	-	P <sub>c</sub> =	7.00
L <sub>u</sub> '=	4.6		

P-Q Curve



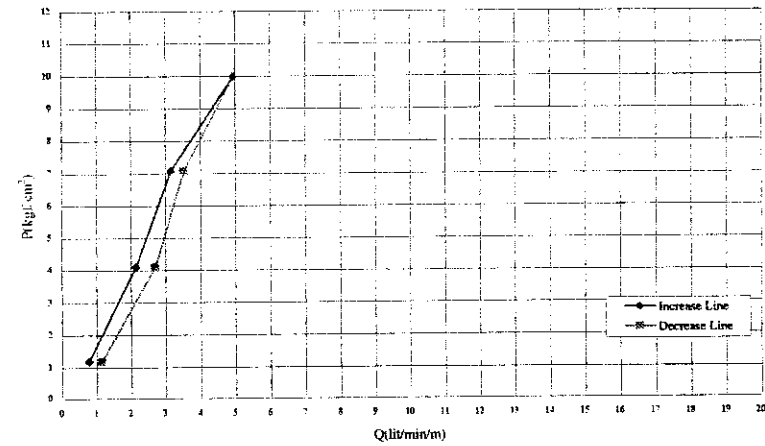
BH KD-3 10/12/02

Project	WRDMM	Bore Hole No.	BH KD-3	Date	10/12/2002
Depth (m)	( 10.00 - 15.00 )	Test Length (m)	5.00	Hole Radius (cm)	3.50
G.W.L. before day's work (m)	2.40	Pressure gauge height (m) : C/100	0.20		
G.W.L. before testing (m) : B/100	1.60	Packer NQ size (cm)	7.00	NQ	
Length (m) and Diameter (cm) of Rod	11.00 m	2.54	cm ( φ )		
Length (m) and Diameter (cm) of Hose	10.00 m	2.54	cm ( φ )		

Pressure gauge Reading : A/1000 (kgf/cm <sup>2</sup> )	Water Injection (l/min)					Average of Water Injection : q (l/min)	Water Injection for 1 m : Q (l/min/m)	Water Pressure in Head (cm)			Effective Pressure : P (kgf/cm <sup>2</sup> )
	1	2	3	4	5			H=A+B+C-Hf			
	6	7	8	9	10			H	A+B+C	Hf	
1.0	4	4	4	4	3	3.88	0.78	1180	1180	0	1.18
	3	4	4	4	4						
4.0	11	10	11	11	10	10.75	2.15	4100	4180	80	4.10
	11	10	11	11	11						
7.0	15	16	15	15	16	15.75	3.15	7080	7180	100	7.08
	16	16	17	16	16						
10.0	25	25	25	24	24	24.75	4.95	9980	10180	200	9.98
	24	25	25	25	25						
7.0	17	17	17	18	18	17.63	3.53	7060	7180	120	7.06
	18	18	18	17	18						
4.0	13	13	12	13	14	13.50	2.70	4090	4180	90	4.09
	14	14	14	13	14						
1.0	6	6	5	5	6	5.75	1.15	1180	1180	0	1.18
	5	6	6	6	6						

L <sub>u</sub> =	5.0	P <sub>c</sub> =	-
L <sub>u</sub> '=	-		

P-Q Curve



RECORD OF WATER PRESSURE TEST

BH KD-3 10/2/2002

Project	WRDMM	Bore Hole No.	BH KD-3	Date	10/2/2002
Depth (m)	( 15.00 - 20.00 )	Test Length (m)	5.00	Hole Radius (cm)	3.50
G.W.L. before day's work (m)	2.40	Pressure gauge height (m) : C/100			0.20
G.W.L. before testing (m) : B/100	1.50	Packer NQ size (cm)		7.00 NQ	
Length (m) and Diameter (cm) of Rod	16.00 m	2.54	cm ( $\phi$ )		
Length (m) and Diameter (cm) of Hose	10.00 m	2.54	cm ( $\phi$ )		

Pressure gauge Reading : A/1000 (kg/cm <sup>2</sup> )	Water Injection (l/min)					Average of Water Injection : q (l/min)	Water Injection for 1 m : Q (l/min/m)	Water Pressure in Head (cm)			Effective Pressure : P (kg/cm <sup>2</sup> )
	1	2	3	4	5			H = A+B+C-Hf	A+B+C	Hf	
1.0	3	2	2	3	3	2.75	0.55	1170	1170	0	1.17
4.0	10	11	10	10	10	9.75	1.95	4090	4170	80	4.09
7.0	14	15	15	15	14	14.75	2.95	7070	7170	100	7.07
10.0	24	25	24	24	24	24.13	4.83	9960	10170	210	9.96
7.0	11	13	13	13	12	12.63	2.53	7080	7170	90	7.08
4.0	8	8	8	8	7	7.75	1.55	4170	4170	0	4.17
1.0	2	2	1	2	2	1.88	0.38	1170	1170	0	1.17

L <sub>1</sub> =	4.8	P <sub>1</sub> =	-
L <sub>2</sub> =	-	P <sub>2</sub> =	-

Q2-30

