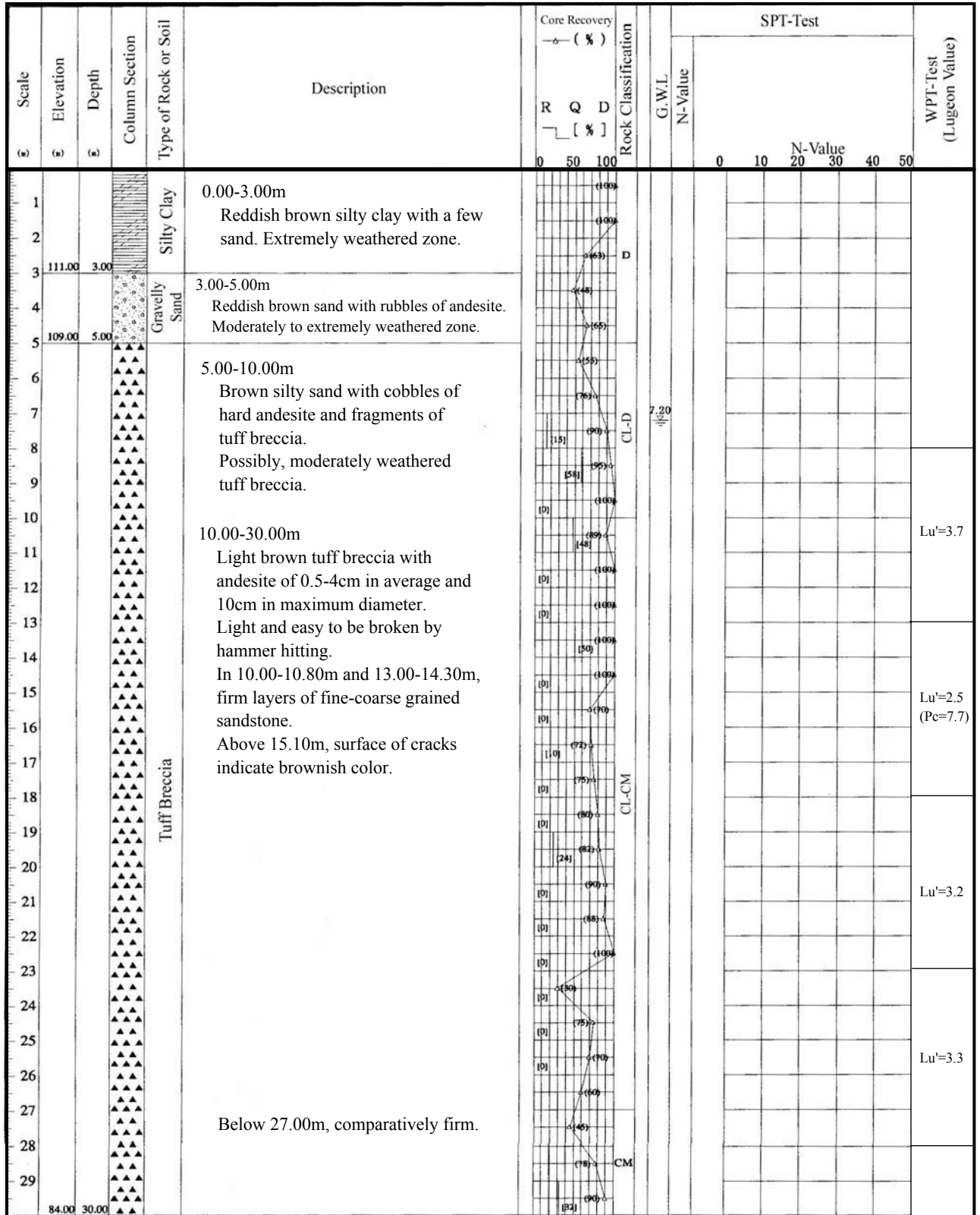
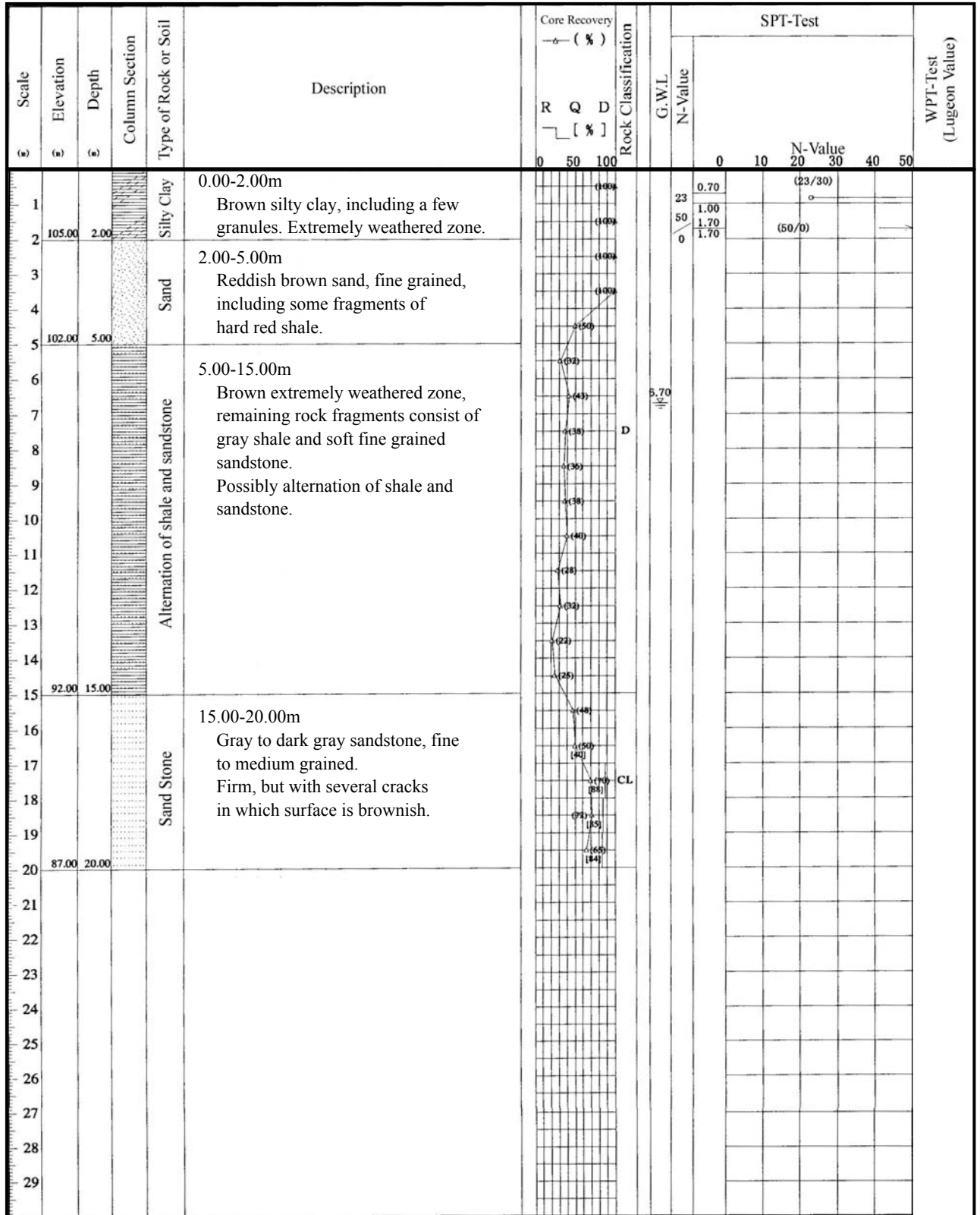


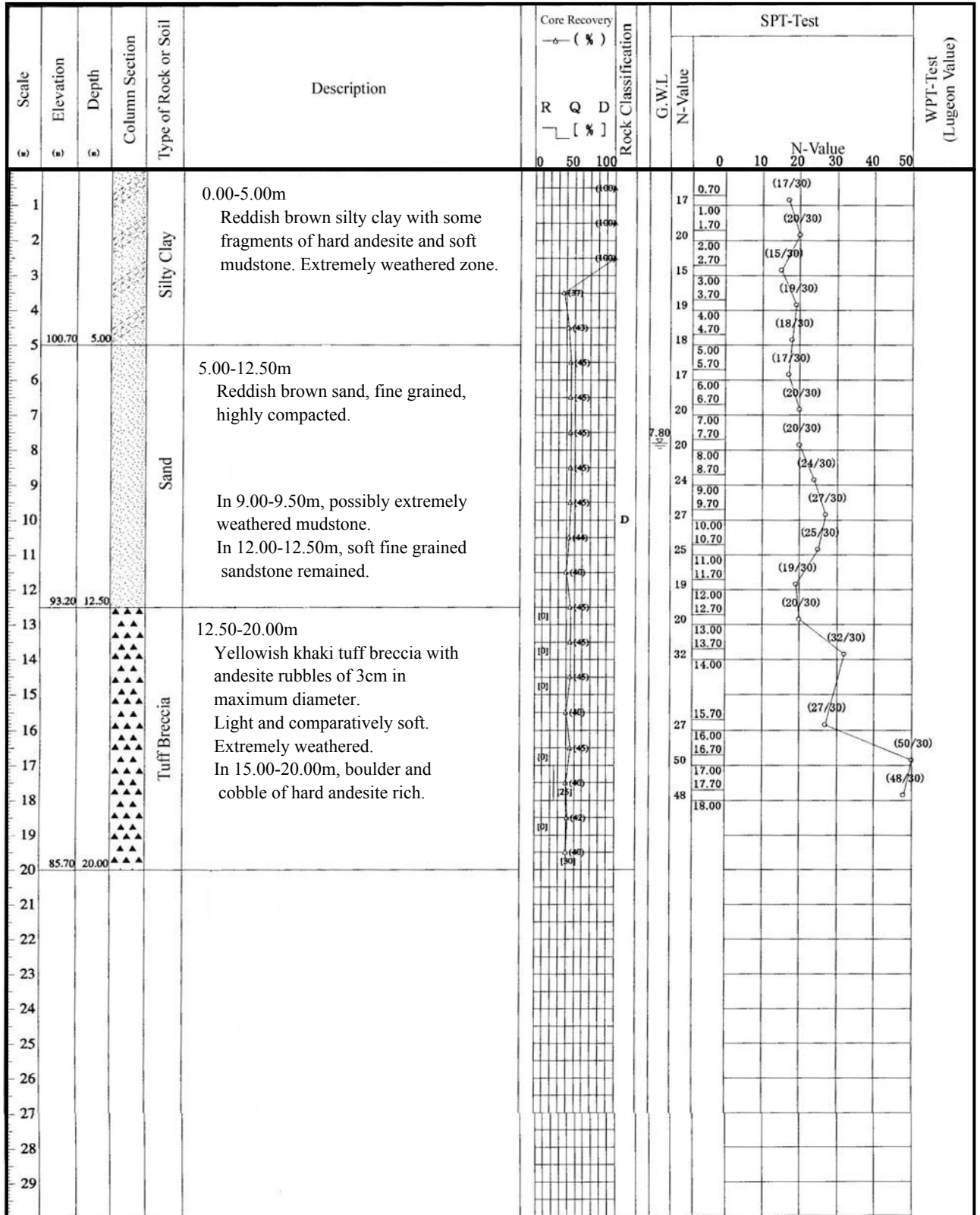
PROJECT	Study on Water Resources Development for Metro Manila		DEPTH	30.00m	ELEVATION	114.00m	
SITE	Transfer Tunnel No.1 Route	COORDINATE	N 1,611,305 ; E 527,132	INCLINATION	$\theta = 45^\circ$	DRILL RIG	TOHO
CASING DEPTH	3.00m	DATE		DRILLED	Cledera		



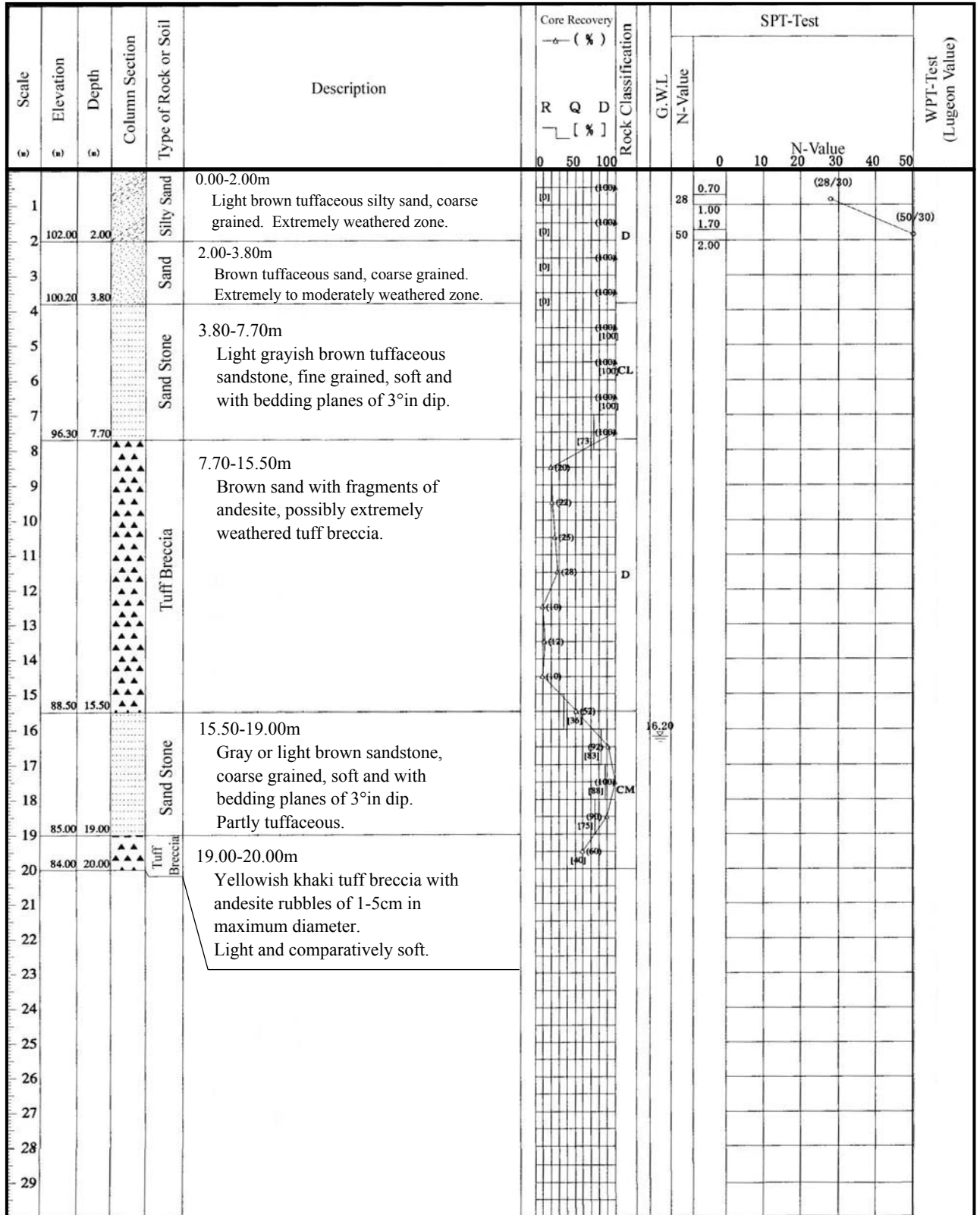
PROJECT	Study on Water Resources Development for Metro Manila		DEPTH	20.00m	ELEVATION	107.00m	
SITE	Lagundi Power House	COORDINATE	N 1,612,435 ; E 527,135	INCLINATION	Vertical	DRILL RIG	TOHO
CASING DEPTH	1.50m	DATE		DRILLED	Diaz		



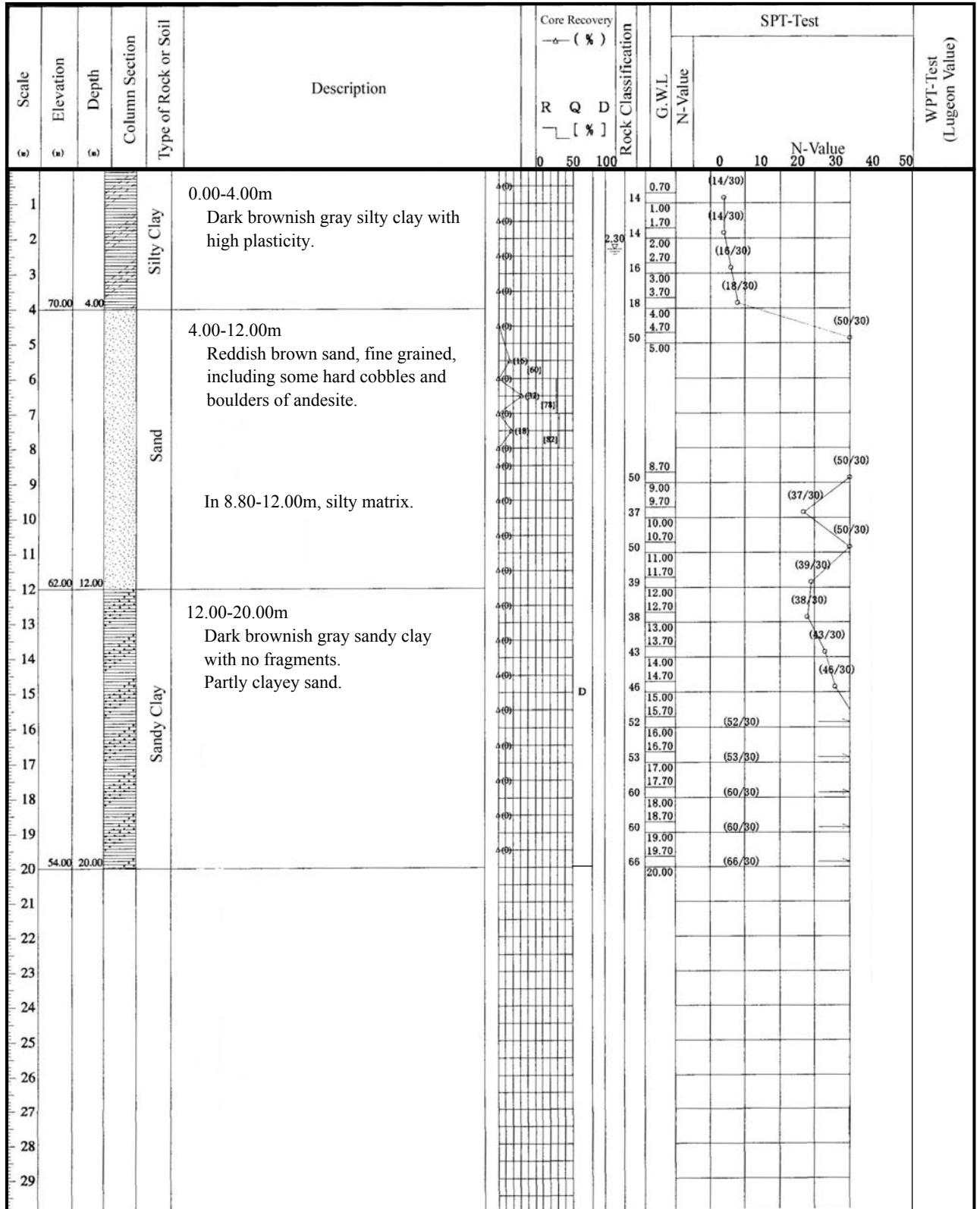
PROJECT	Study on Water Resources Development for Metro Manila		DEPTH	20.00m	ELEVATION	105.70m	
SITE	Morong Water Treatment Plant	COORDINATE	N 1,610,980 ; E 527,102	INCLINATION	Vertical	DRILL RIG	TOHO
CASING DEPTH	9.00m	DATE		DRILLED	Cledera / Diaz		



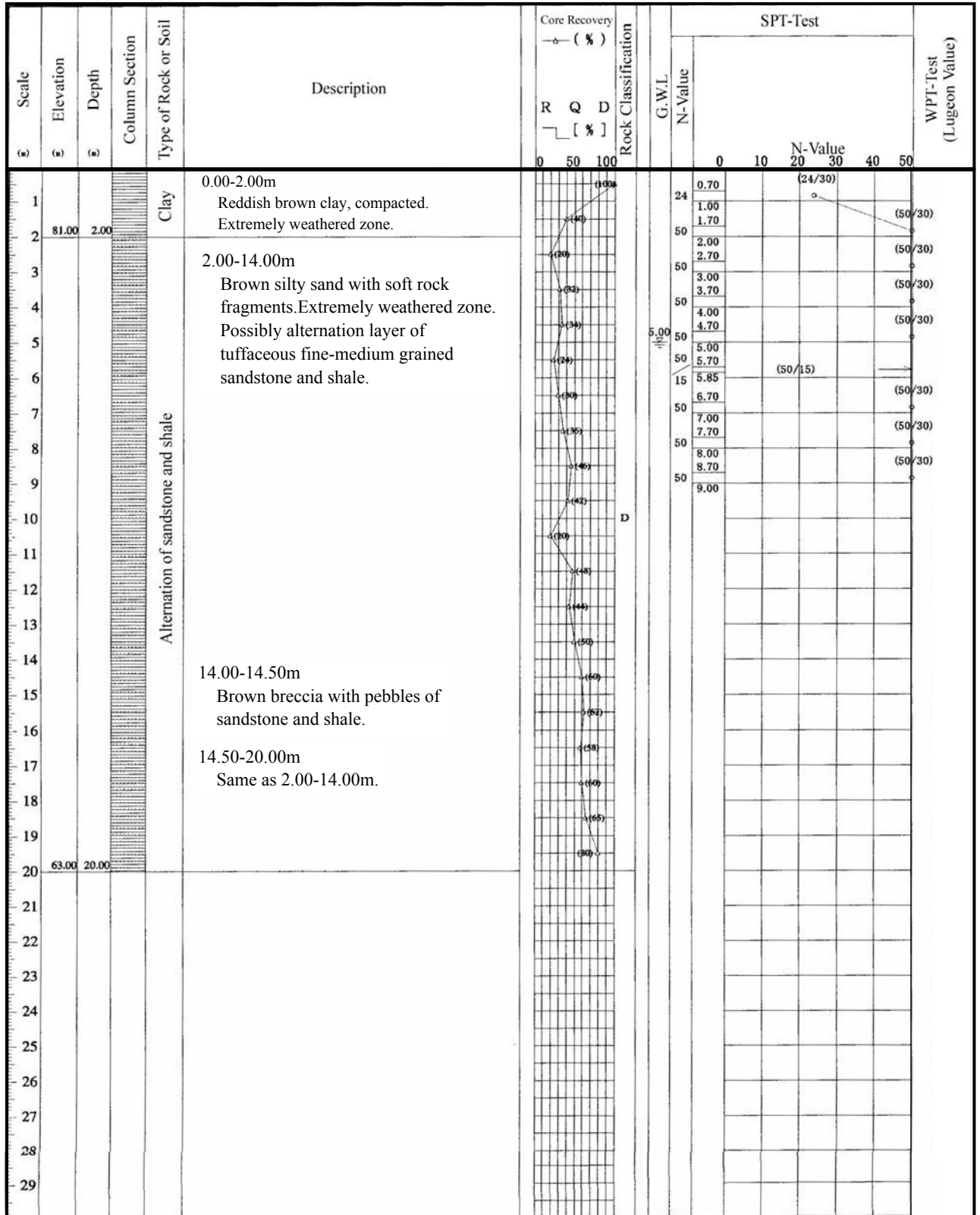
PROJECT	Study on Water Resources Development for Metro Manila		DEPTH	20.00m	ELEVATION	104.00m	
SITE	Morong Water Treatment Plant	COORDINATE	N 1,610,722 ; E 526,840	INCLINATION	Vertical	DRILL RIG	TOHO
CASING DEPTH	2.00m	DATE		DRILLED	Diaz / Cledera		



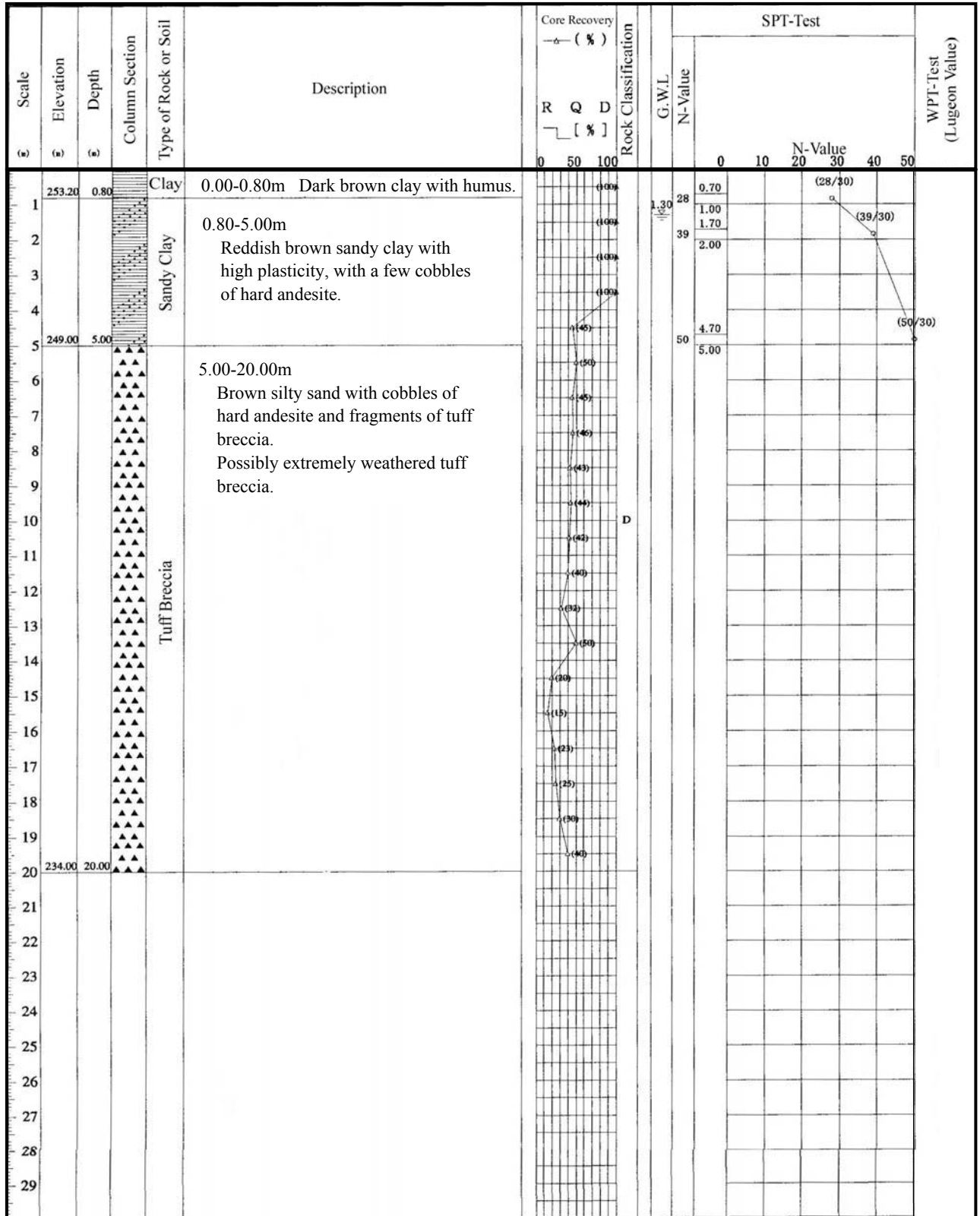
PROJECT	Study on Water Resources Development for Metro Manila		DEPTH	20.00m	ELEVATION	74.00m	
SITE	Antipolo Pump Station	COORDINATE	N 1,612,780 ; E 521,016	INCLINATION	Vertical	DRILL RIG	TOHO
CASING DEPTH	6.00m	DATE		DRILLED	Cledera		



PROJECT	Study on Water Resources Development for Metro Manila		DEPTH	20.00m	ELEVATION	83.00m	
SITE	Taytay Service Reservoir	COORDINATE	N 1,610,175 ; E 516,676	INCLINATION	Vertical	DRILL RIG	TOHO
CASING DEPTH	6.00m	DATE		DRILLED	Cledera		



PROJECT	Study on Water Resources Development for Metro Manila		DEPTH	20.00m	ELEVATION	254.00m	
SITE	Antipolo Service Reservoir	COORDINATE	N 1,614,176 ; E 520,995	INCLINATION	Vertical	DRILL RIG	TOHO
CASING DEPTH	6.00m	DATE		DRILLED	Cledera		



PROJECT	Study on Water Resources Development for Metro Manila		DEPTH	30.00m	ELEVATION	98.00m	
SITE	Water Tunnel No.2	COORDINATE	N 1,611,421 ; E 521,068	INCLINATION	$\theta = 45^\circ$	DRILL RIG	TOHO
CASING DEPTH	3.00m	DATE		DRILLED	Cledera		

Scale (m)	Elevation (m)	Depth (m)	Column Section	Type of Rock or Soil	Description	Core Recovery — (%)			Rock Classification	G.W.L	SPT-Test					WPT-Test (Lugeon Value)		
						R	Q	D			N-Value							
						0	50	100	0 10 20 30 40 50									
1				Sand	0.00-12.00m Brown sand, fine grained, with soft fragments of sandstone, tuffaceous sandstone, and andesite. Extremely weathered zone.				1.30									
2																		
3																		
4																		
5																		
6																		
7																		
8																		
9																		
10																		
11																		
12	86.00	12.00			Sand Stone	12.00-25.40m Brownish gray clayey sand with no fragments. Possibly soft sandstone, fine to very fine grained.					D							
13																		
14																		
15																		
16																		
17																		
18																		
19																		
20																		
21																		
22																		
23																		
24																		
25	72.60	25.40		Mud Stone	25.40-26.00m Reddish brown clay, compacted. Possibly extremely weathered mudstone.				CL-D									
26	72.00	26.00																
27				Sand Stone	26.00-30.00m Light gray sandstone, soft and fine grained.													
28																		
29	68.00	30.00																

PROJECT	Study on Water Resources Development for Metro Manila		DEPTH	30.00m	ELEVATION	82.00m	
SITE	Water Tunnel No.2	COORDINATE	N 1,610,150 ; E 516,838	INCLINATION	$\theta = 45^\circ$	DRILL RIG	TOHO
CASING DEPTH	5.00m	DATE		DRILLED	Cledera		

