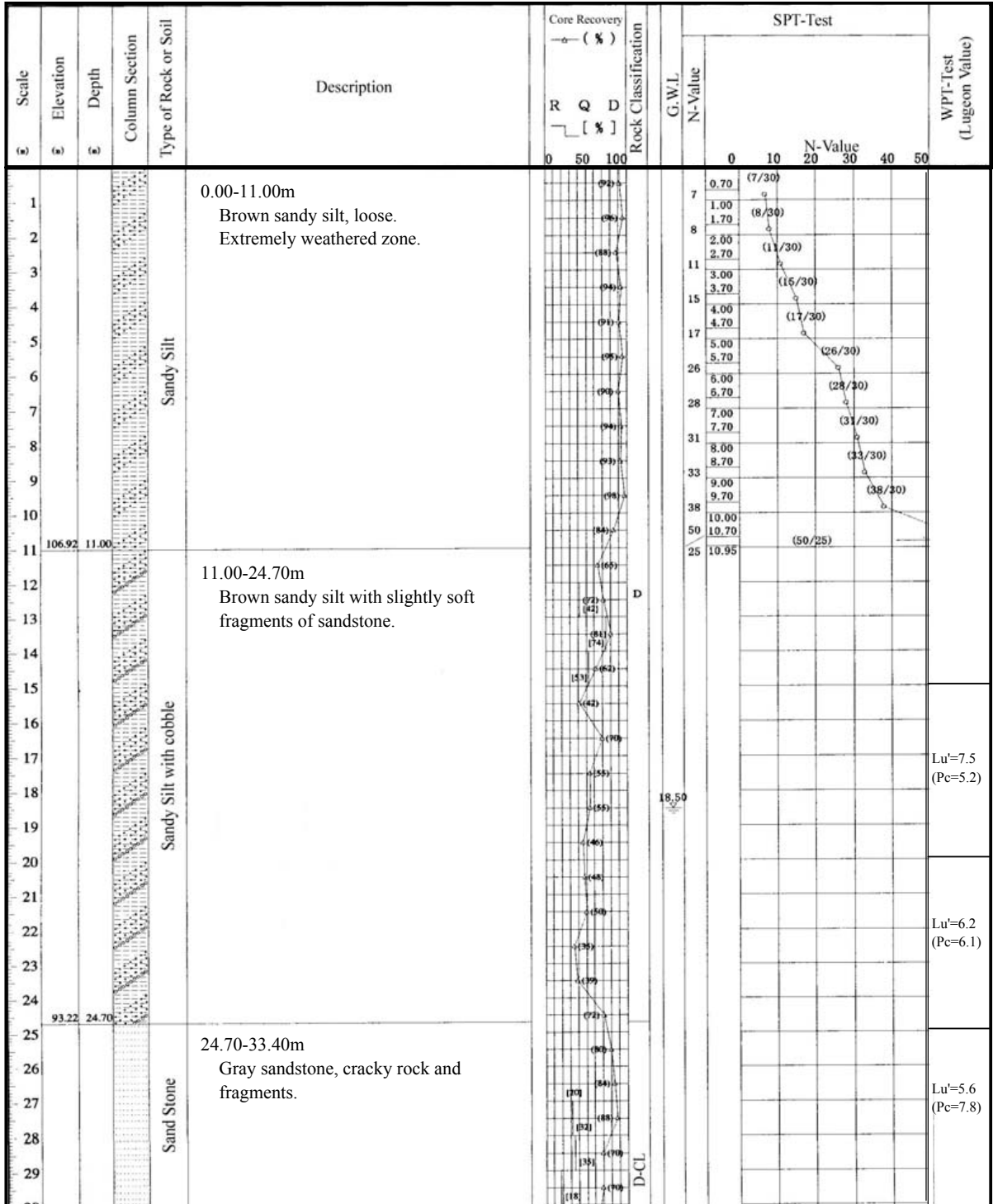


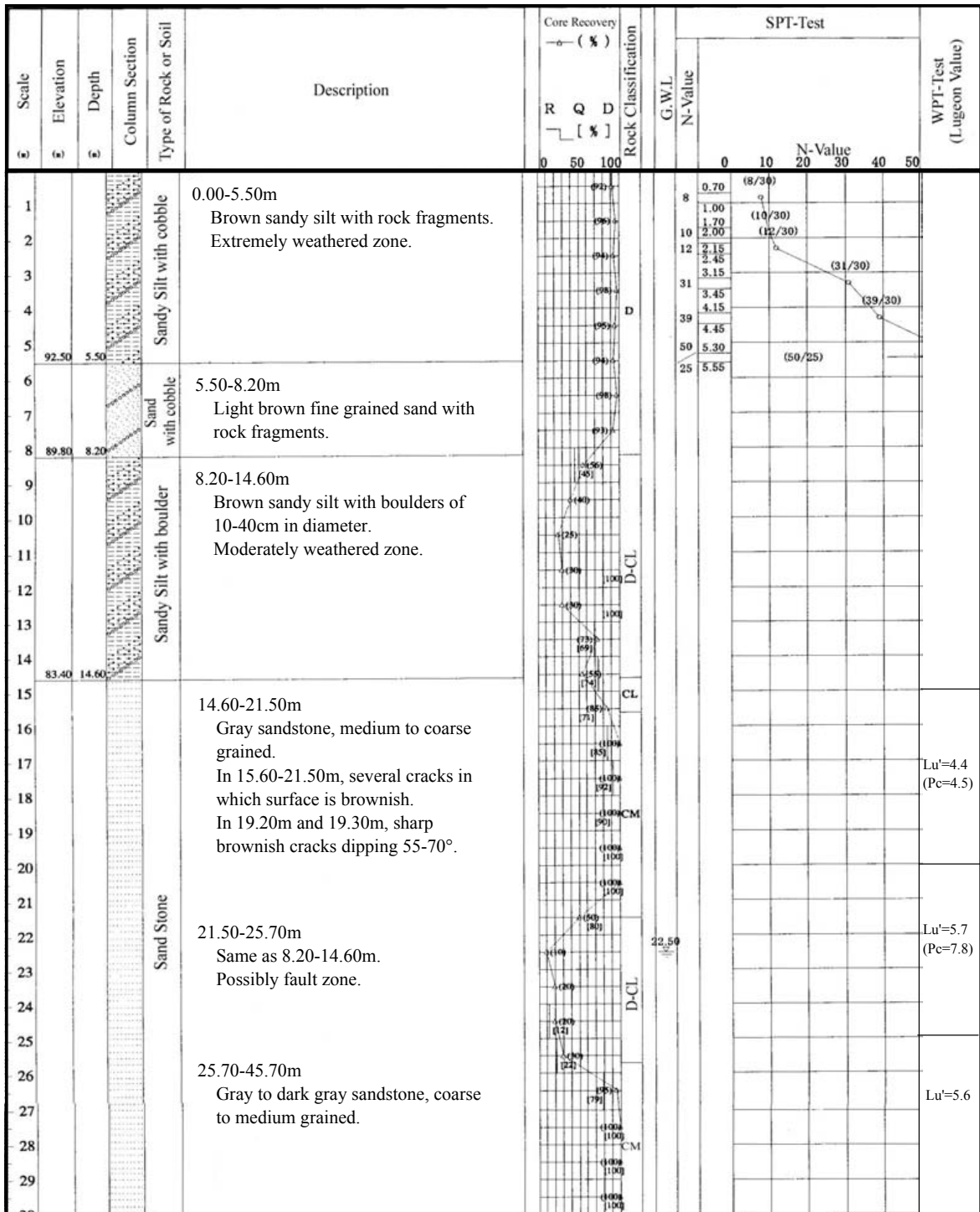
PROJECT	Study on Water Resources Development for Metro Manila		DEPTH	50.00m	ELEVATION	117.92m	
SITE	Agos Damsite	COORDINATE	N 1,624,633 ; E 557,376	INCLINATION	Vertical	DRILL RIG	TFM
CASING DEPTH	10.00m	DATE		DRILLED	M.Mabitan		



PROJECT	Study on Water Resources Development for Metro Manila		DEPTH	50.00m	ELEVATION	117.92m	
SITE	Agos Damsite	COORDINATE	N 1,624,633 ; E 557,376	INCLINATION	Vertical	DRILL RIG	TFM
CASING DEPTH	10.00m	DATE		DRILLED	M.Mabitan		

Scale (m)	Elevation (m)	Depth (m)	Column Section	Type of Rock or Soil	Description	Core Recovery R Q D [%]	Rock Classification	G.W.L.	SPT-Test		WPT-Test (Lugeon Value)
									N-Value	N-Value	
30											
31											
32											
33											
34					33.40-35.00m						
35					Gray sandstone, medium grained. Some vertical cracks in which surface is brownish, with thin calcite veins.						Lu'=12.0
36											
37					35.00-45.50m						
38					Gray sandstone, medium to coarse grained and stiff. In 35.00-37.60m, crack with brownish surface.						Lu'=6.5 (Pc=7.8)
39											
40											
41											
42											Lu'=5.8 (Pc=6.8)
43											
44											
45											
46					45.50-50.00m						
47					Poor core recovery. Fragments of hard sandstone which is medium to coarse grained. In 47.15-47.40m, sharp crack dipping 80°.						Lu'=14.5
48											
49											
50	67.92	50.00									

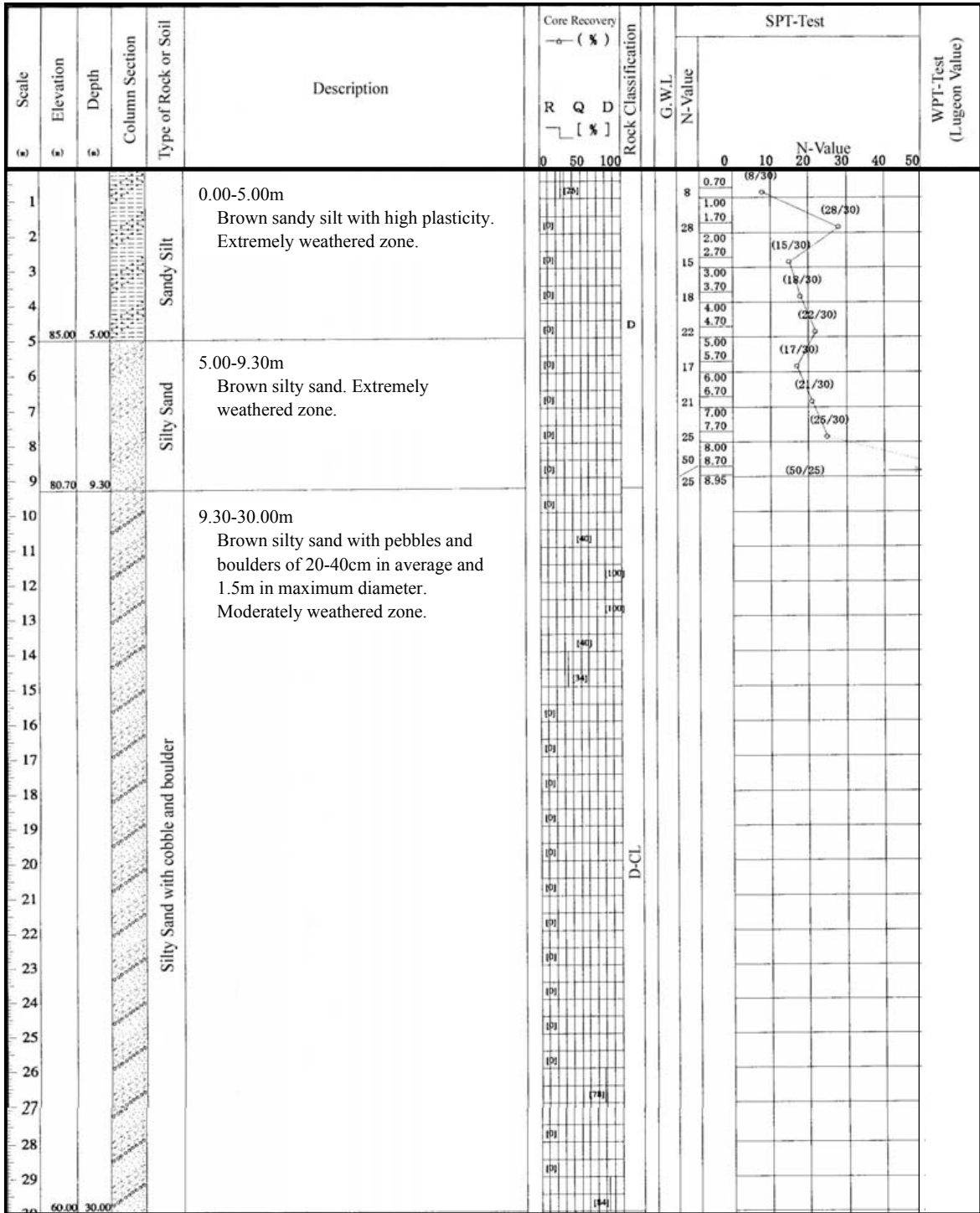
PROJECT	Study on Water Resources Development for Metro Manila	DEPTH	50.00m	ELEVATION	98.00m
SITE	Agos Alternative Damsite	COORDINATE	N 1,625,310 ; E 558,038	INCLINATION	Vertical
CASING DEPTH	9.00m	DATE		DRILLED	M.Mabitazan



PROJECT	Study on Water Resources Development for Metro Manila		DEPTH	50.00m	ELEVATION	98.00m	
SITE	Agos Alternative Damsite	COORDINATE	N 1,625,310 ; E 558,038	INCLINATION	Vertical	DRILL RIG	TFM
CASING DEPTH	9.00m	DATE		DRILLED	M.Mabitazan		

Scale (a)	Elevation (a)	Depth (a)	Column Section Type of Rock or Soil	Description	Core Recovery — (%) R Q D [%]	Rock Classification	G.W.L	SPT-Test		WPT-Test (Lugeon Value)
								N-Value	N-Value	
			Sand Stone	In 30.50m and 43.80m, sharp cracks dipping 60-90°.	100					Lu'=5.2
				Around 35.60m and 36.50m, calcite veins dipping 50°.	100					
				In 35.50-45.70m, some conglomerate layers of 0.2-0.8m in thickness are alternated with sandstone.	100					Lu'=3.1
					100					
					100					
					100					
					100					
					100					
					100					
					100					
			Conglomerate	45.70-50.00m Gray conglomerate with bedding plane of 45° dip.	100					Lu'=2.3 (Pc=8.4)
					100					
					100					
					100					

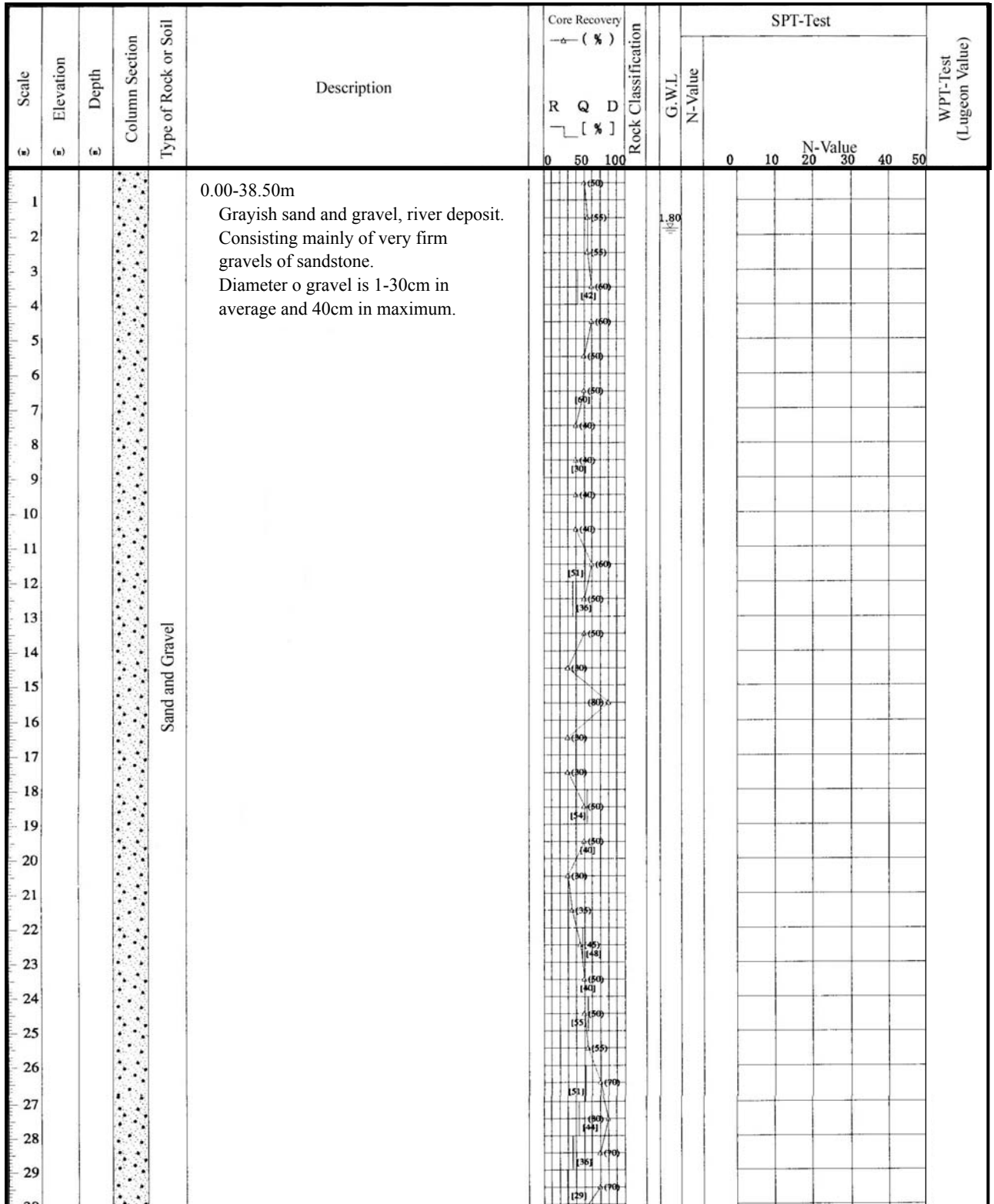
PROJECT	Study on Water Resources Development for Metro Manila	DEPTH	50.00m	ELEVATION	90.00m
SITE	Agos Alternative Damsite	COORDINATE	N 1,624,887 ; E 557,910	INCLINATION	Vertical
CASING DEPTH	27.00m	DATE		DRILLED	M.Mabitazan



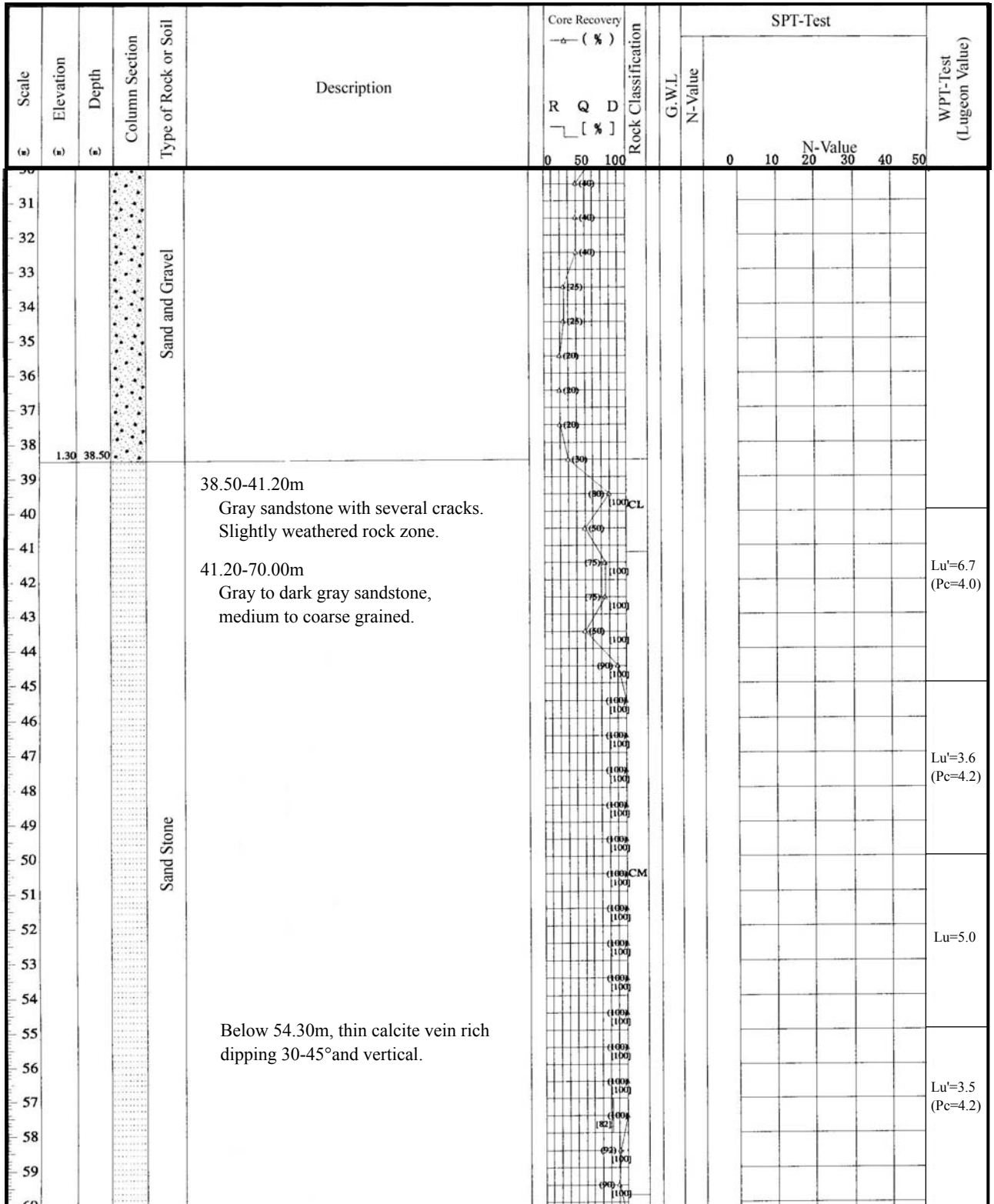
PROJECT	Study on Water Resources Development for Metro Manila		DEPTH	50.00m	ELEVATION	90.00m	
SITE	Agos Alternative Damsite	COORDINATE	N 1,624,887 ; E 557,910	INCLINATION	Vertical	DRILL RIG	TFM
CASING DEPTH	27.00m	DATE		DRILLED	Ribilla		

Scale (a)	Elevation (a)	Depth (a)	Column Section Type of Rock or Soil	Description	Core Recovery — (%) R Q D [%]	Rock Classification	G.W.L	SPT-Test		WPT-Test (Lugeon Value)	
								N-Value	N-Value		
								0 10 20 30 40 50			
30			Sand Stone	30.00-50.00m Gray to dark gray sandstone, medium to coarse grained. Almost firm, while cracky zones are observed in 30.00-31.30m and 38.20-39.90m. In 30.00-31.30m, brownish surface of vertical crack. In 36.10m, 36.80m, 39.90m, sharp cracks dipping 60-90°.	(42)	CL	34.55			Lu'=6.2 (Pc=8.8)	
31				(50)							
32				(50)							
33				(78)							
34				100	CM						
35				100							
36				(04)							Lu'=4.5
37				100							
38				100							
39				100	CL						
40				(04)							
41				100							
42				100							
43				100							
44				(68)							
45				(70)	CM						
46				100							
47				100							
48				100							
49			100								

PROJECT	Study on Water Resources Development for Metro Manila		DEPTH	70.00m	ELEVATION	39.80m	
SITE	Agos Alternative Damsite	COORDINATE	N 1,625,060 ; E 557,973	INCLINATION	Vertical	DRILL RIG	LY 34
CASING DEPTH	41.35m	DATE		DRILLED	D.Magdua		



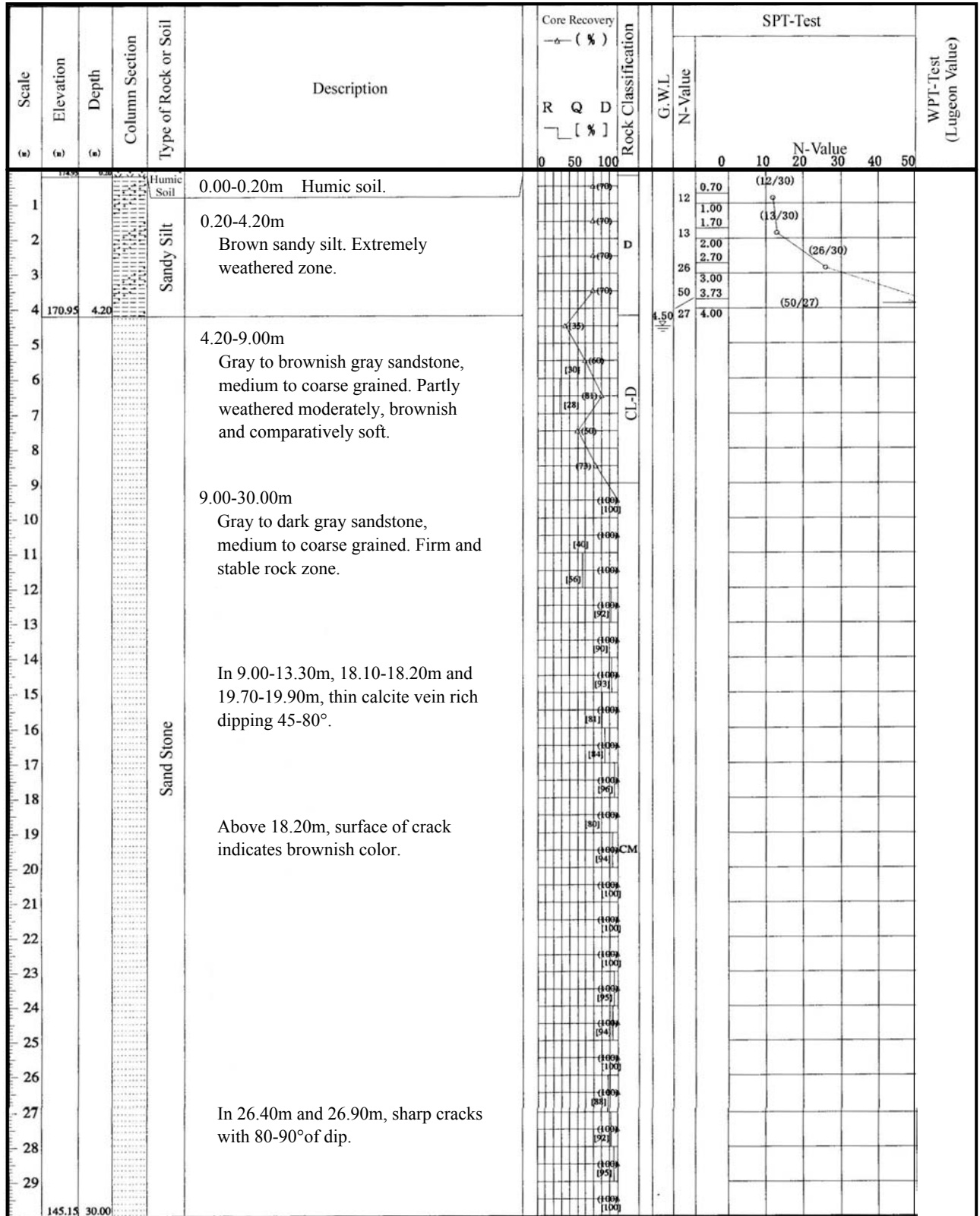
PROJECT	Study on Water Resources Development for Metro Manila		DEPTH	70.00m	ELEVATION	39.80m	
SITE	Agos Alternative Damsite	COORDINATE	N 1,625,060 ; E 557,973	INCLINATION	Vertical	DRILL RIG	LY 34
CASING DEPTH	41.35m	DATE		DRILLED	D.Magdua		



PROJECT	Study on Water Resources Development for Metro Manila		DEPTH	70.00m	ELEVATION	39.80m	
SITE	Agos Alternative Damsite	COORDINATE	N 1,625,060 ; E 557,973	INCLINATION	Vertical	DRILL RIG	LY 34
CASING DEPTH	41.35m	DATE		DRILLED	D.Magdua		

Scale (a)	Elevation (b)	Depth (c)	Column Section	Type of Rock or Soil	Description	Core Recovery — (%)			Rock Classification	G.W.L.	N-Value	SPT-Test					WPT-Test (Lu-geon Value)	
						R	Q	D				N-Value						
						0	50	100	0 10 20 30 40 50									
60																		
61					In 59.80-61.40m, low core recovery, possibly fault zone.	(60)	(100)	CL										
62						(100)	(100)											
63						(85)	(100)											
64						(100)	(100)											
65						(100)	(100)											
66				Sand Stone		(100)	(100)	CM										
67						(85)	(100)											
68						(100)	(100)											
69						(100)	(100)											
	-30.20	70.00					(100)	(100)										

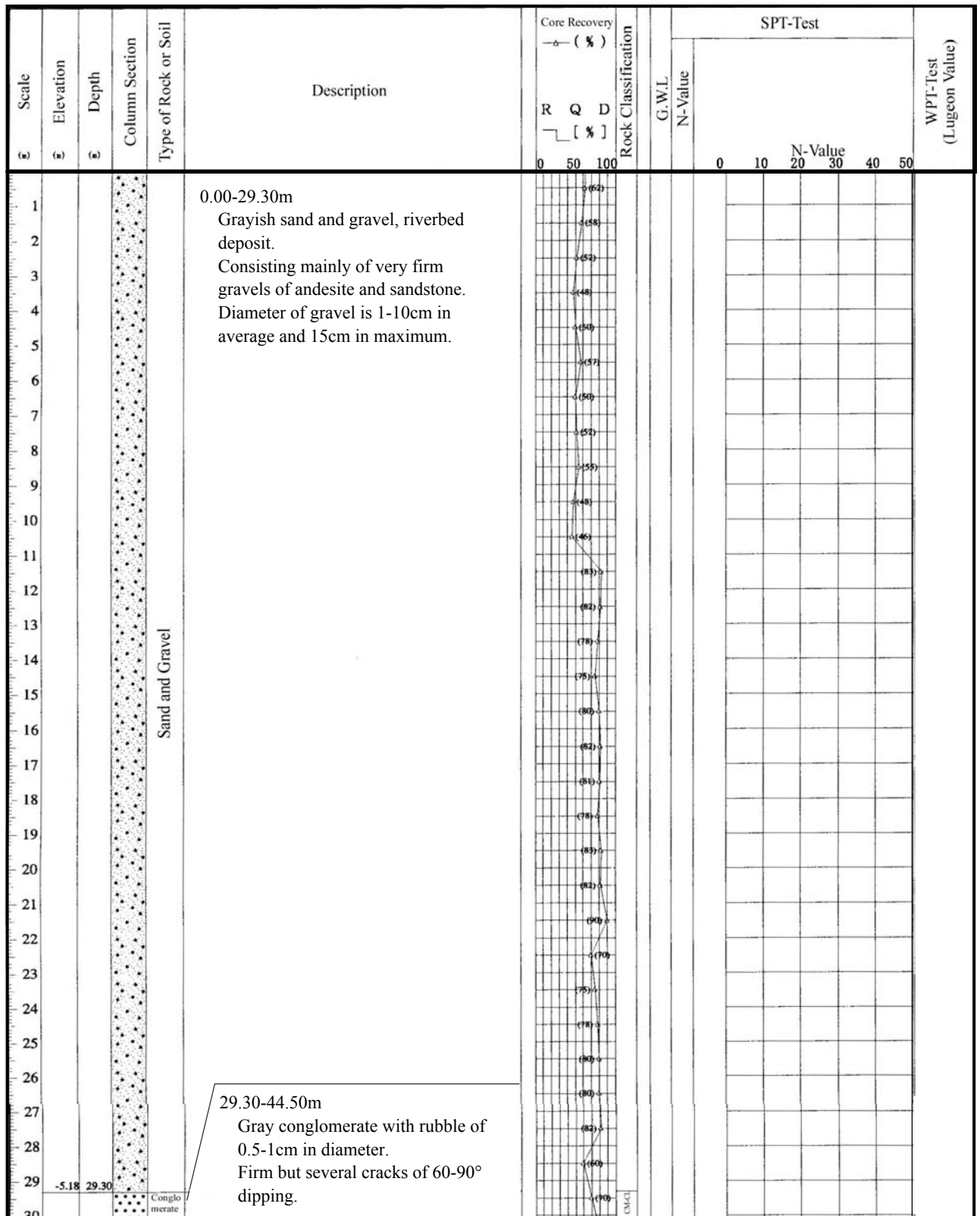
PROJECT	Study on Water Resources Development for Metro Manila		DEPTH	30.00m	ELEVATION	175.15m	
SITE	Agos Quarry Site	COORDINATE	N 1,624,623 ; E 556,318	INCLINATION	Vertical	DRILL RIG	TS-50
CASING DEPTH	10.00m	DATE		DRILLED	S.Eclera		



PROJECT	Study on Water Resources Development for Metro Manila		DEPTH	30.00m	ELEVATION	187.08m	
SITE	Agos Quarry Site	COORDINATE	N 1,624,203 ; E 556,060	INCLINATION	Vertical	DRILL RIG	TS-50
CASING DEPTH	0.50m	DATE		DRILLED	S.Eclera		

Scale (m)	Elevation (m)	Depth (m)	Column Section	Type of Rock or Soil	Description	Core Recovery — (%)			Rock Classification	G.W.L N-Value	SPT-Test					WPT-Test (Lugeon Value)	
						R	Q	D			N-Value						
						0	50	100	0 10 20 30 40 50								
1				Humic Soil	0.00-0.20m Humic soil.												
2				Sand Stone	0.20-3.00m Gray to dark gray sandstone, fine to medium grained. Cracky, slightly to moderately weathered zone.			CL									
3																	
4																	
5						3.00-30.00m Gray to dark gray sandstone, fine to medium grained, and slightly soft. In whole section, thin calcite veins of 45-50° and 80-90° in dip are observed.											
6																	
7																	
8																	
9																	
10																	
11																	
12																	
13																	
14																	
15																	
16																	
17						In 16.30-18.90m and 29.40-30.00m, cracky with 50° dipping planes.			CM-CL								
18																	
19																	
20																	
21																	
22																	
23																	
24																	
25																	
26																	
27																	
28																	
29																	
	157.08	30.00															

PROJECT	Study on Water Resources Development for Metro Manila		DEPTH	50.00m	ELEVATION	24.12m	
SITE	Agos After Weir Site	COORDINATE	N 1,626,053 ; E 562,060	INCLINATION	Vertical	DRILL RIG	LY-24
CASING DEPTH	13.00m	DATE		DRILLED	S.Eclera		



DRILL LOG

HOLE NO. BD-1

SHEET NO. 2 OF 2

PROJECT	Study on Water Resources Development for Metro Manila		DEPTH	50.00m	ELEVATION	24.12m	
SITE	Agos After Weir Site	COORDINATE	N 1,626,053 ; E 562,060	INCLINATION	Vertical	DRILL RIG	LY-24
CASING DEPTH	13.00m	DATE		DRILLED	S.Eclera		

