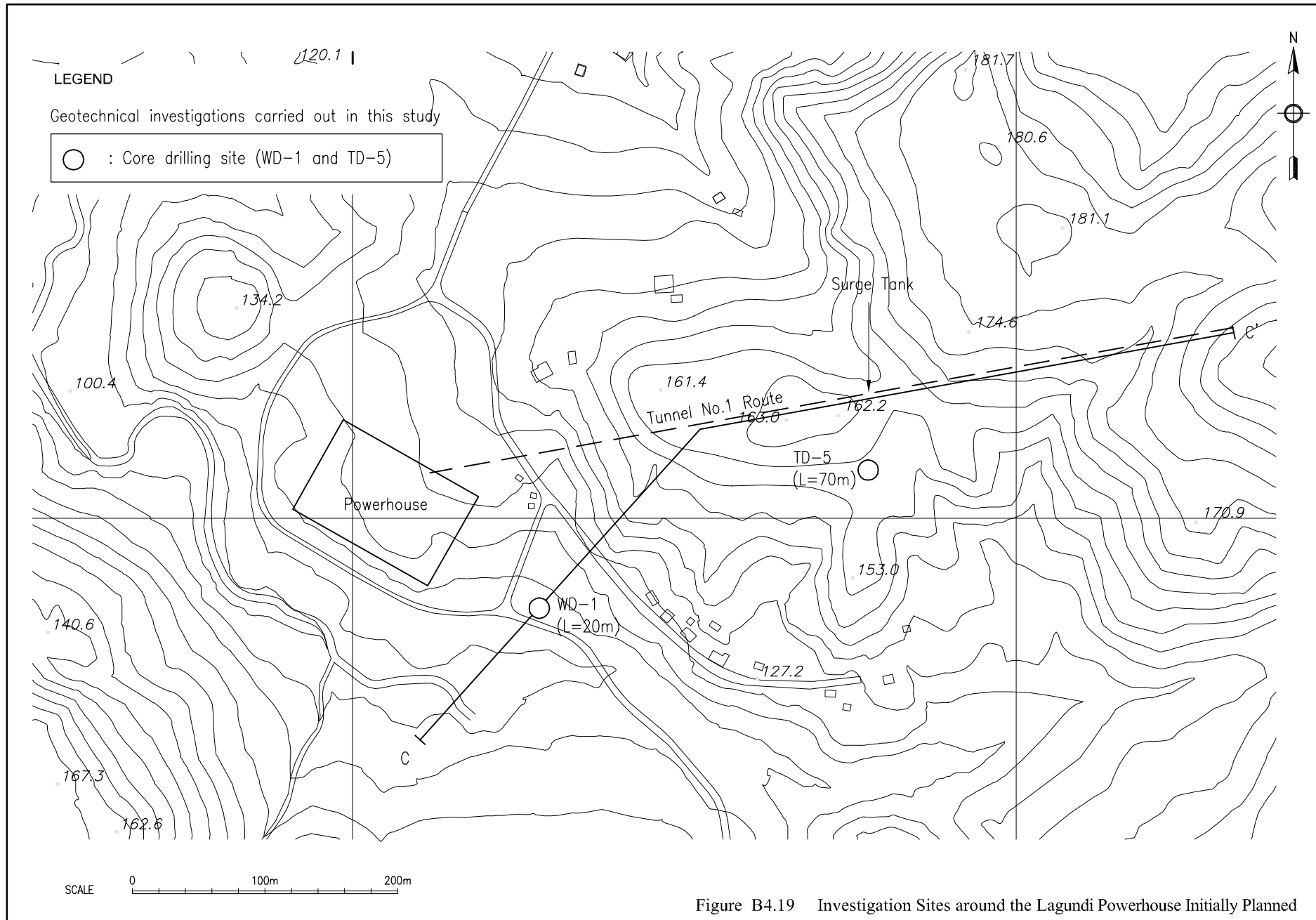


#### LEGEND

Geotechnical investigations carried out in this study

	Seismic prospecting line (WS-1)
	Core drilling site (WD-2, WD-3 and TD-6)
	Test pitting site for soil (WTP-1 to WTP-6)

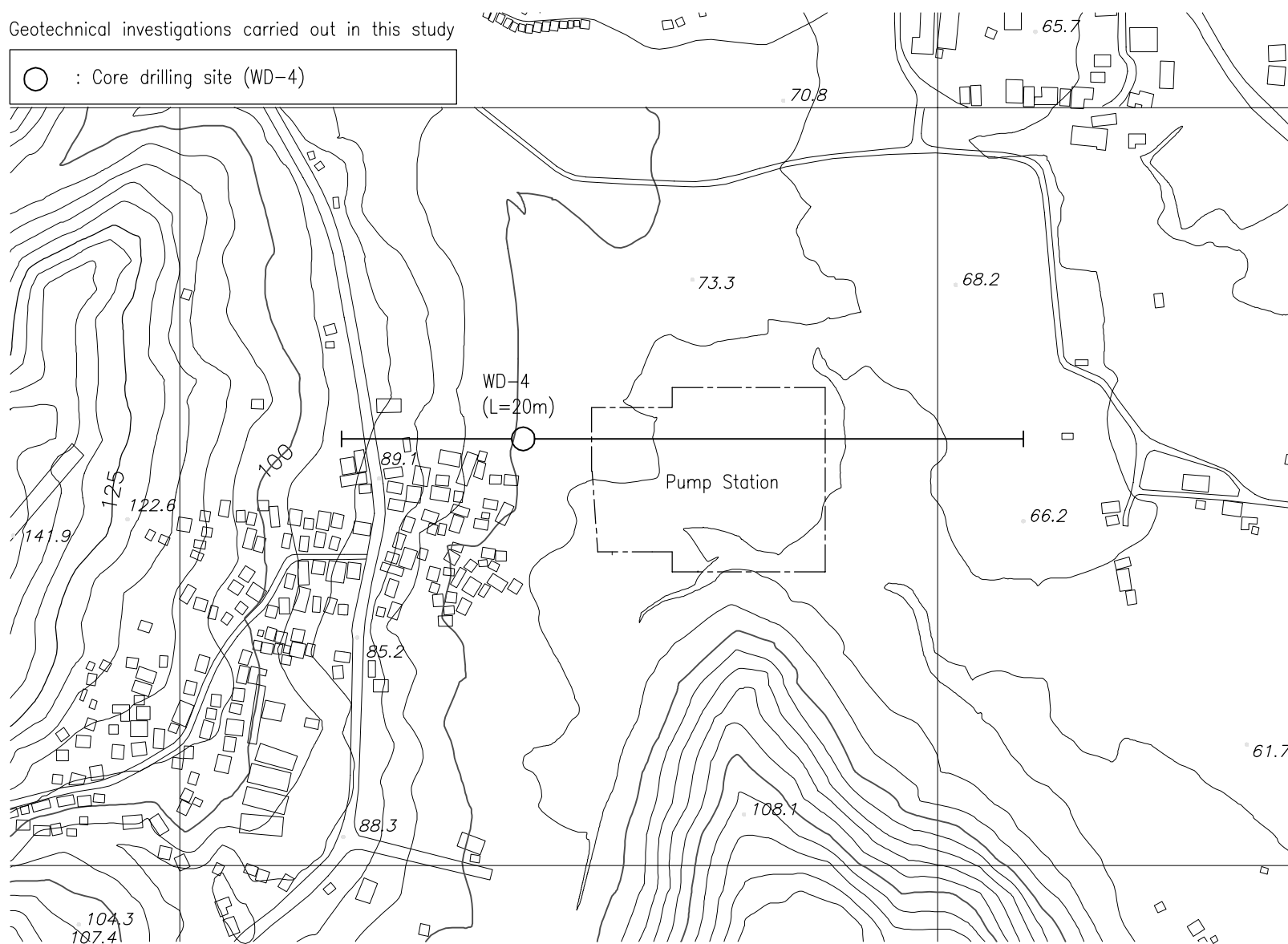
Figure B4.18 Geological Condition around the Morong Water Treatment Plant



LEGEND

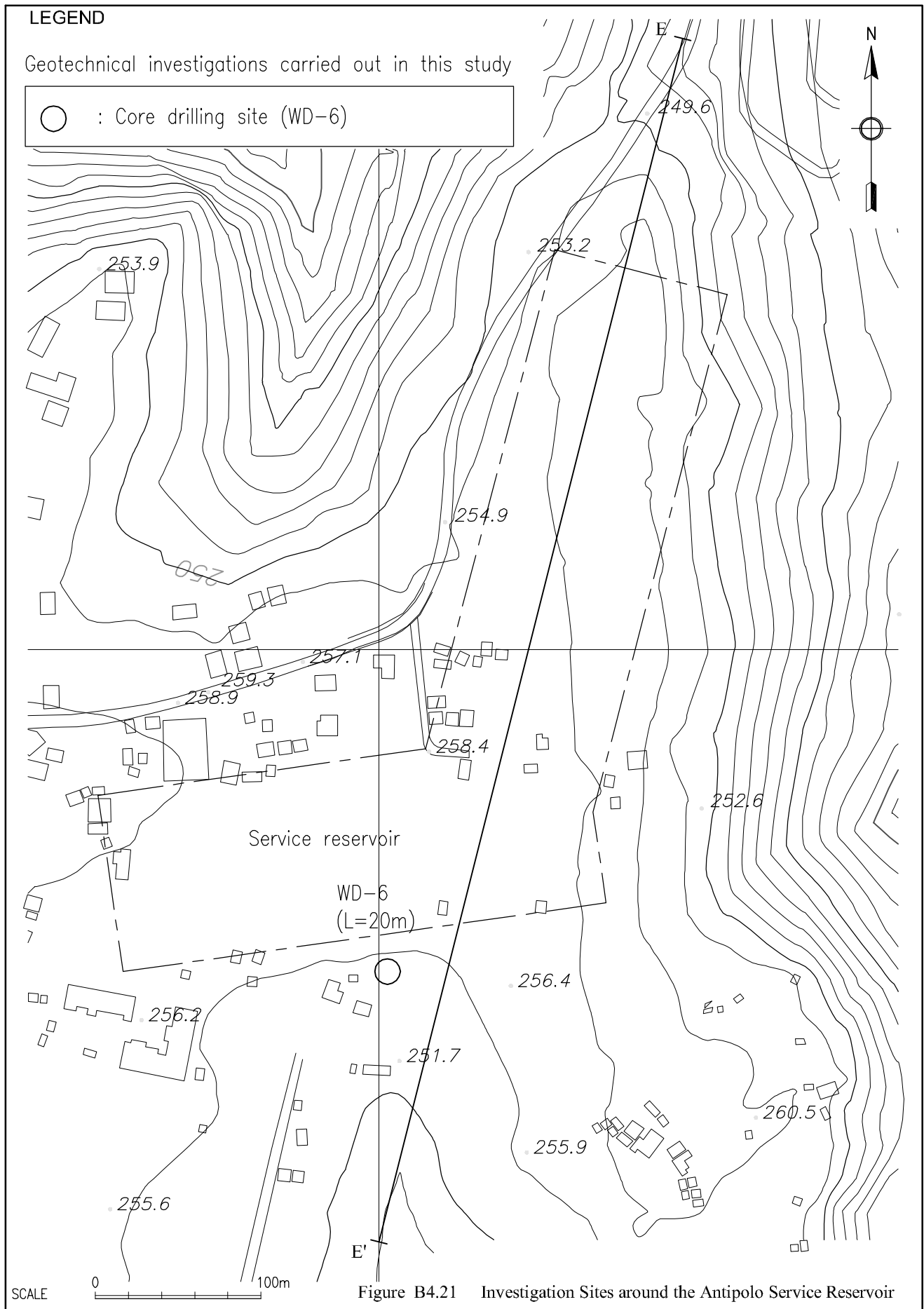
Geotechnical investigations carried out in this study

○ : Core drilling site (WD-4)



SCALE 0 100m 200m

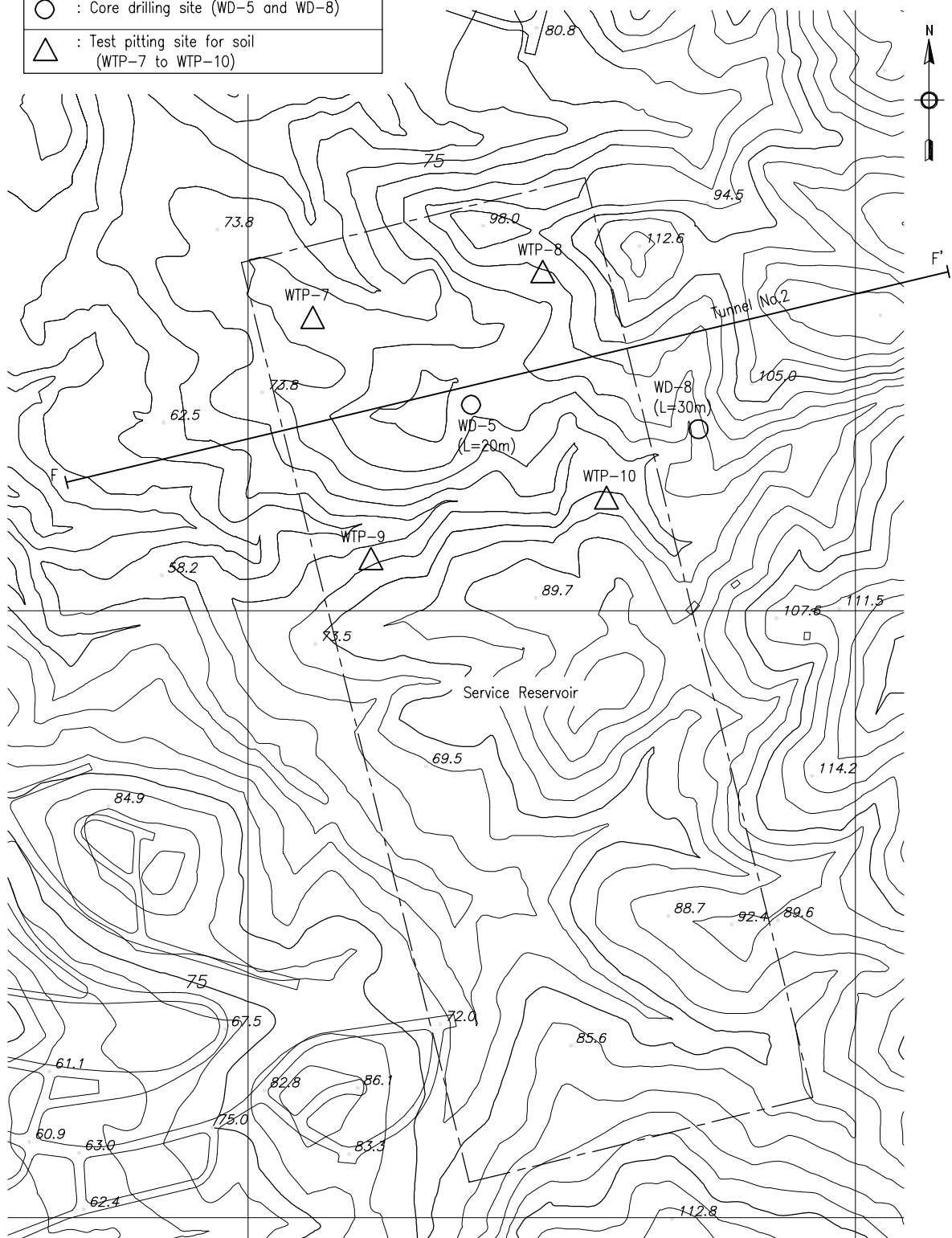
Figure B4.20 Investigation Sites around the Antipolo Pump Station



# LEGEND

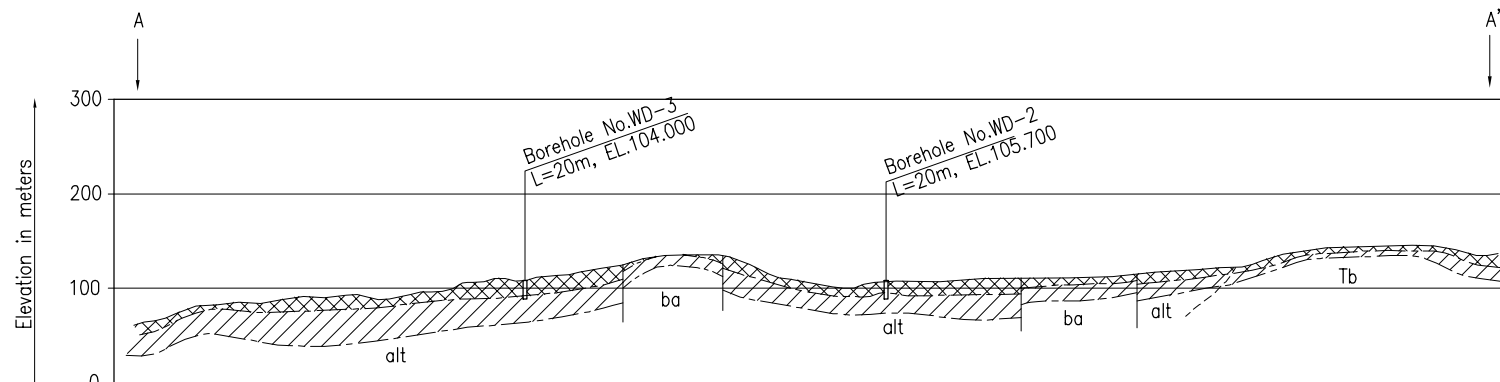
Geotechnical investigations carried out in this study

○	: Core drilling site (WD-5 and WD-8)
△	: Test pitting site for soil (WTP-7 to WTP-10)

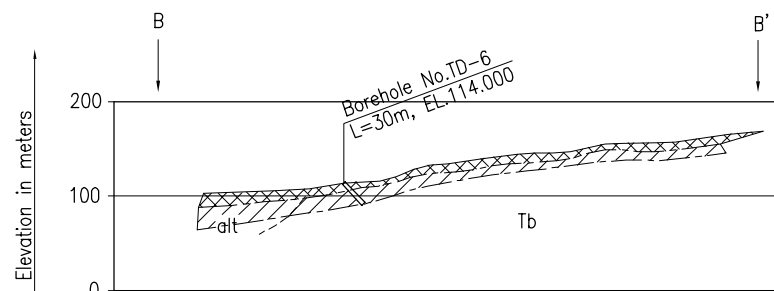


SCALE 0 100m 200m

Figure B4.22 Investigation Sites around the Taytay Service Reservoir



PROFILE AROUND MORONG WATER TREATMENT PLANT  
(A-A')



PROFILE AROUND OUTLET OF TUNNEL No. 1  
(B-B')

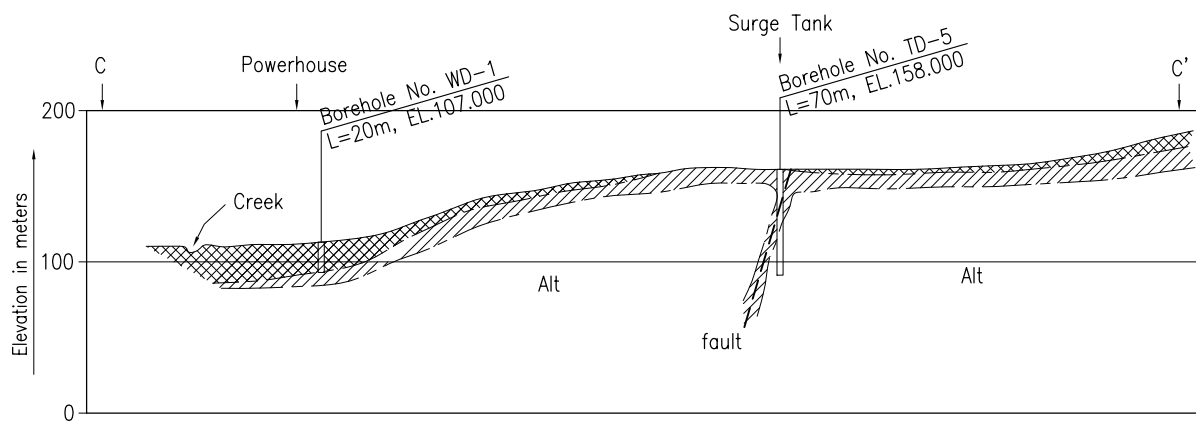
LEGEND

ba	Basalt dike
Alt	Alternation of tuff breccia and tuffaceous sandstone
Tb	Tuff breccia
	Decomposed rock or residual soil
	Weathered rock, crackly or consolidated sediments

	Geological boundary
Geotechnical investigations carried out in this study	
	Core drilling site (WD-2, WD-3 and TD-6)

SCALE 0 200m 400m

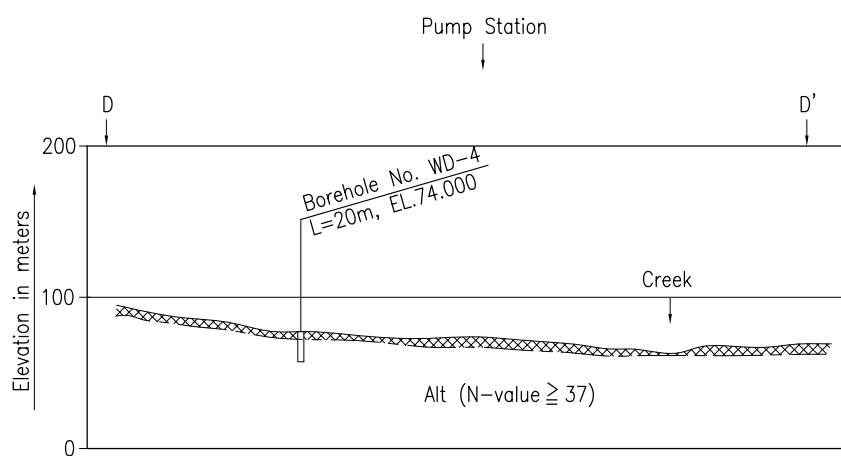
Figure B4.23 Geological Profile of Waterway Facilities (1)



PROFILE OF SURGE TANK - LAGUNDI POWERHOUSE  
INITIALLY PLANNED FOR INVESTIGATION  
(C-C')

LEGEND

Alt	Alternation of sandstone and conglomerate
	Decomposed rock or residual soil
	Weathered rock, cracky
	Fault



PROFILE OF ANTIPULO PUMP STATION  
(D-D')

LEGEND

Alt	Alternation of tuff breccia and sandstone
	Residual soil (N-value ≥ 37)

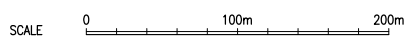


Figure B4.24 Geological Profile of Waterway Facilities (2)

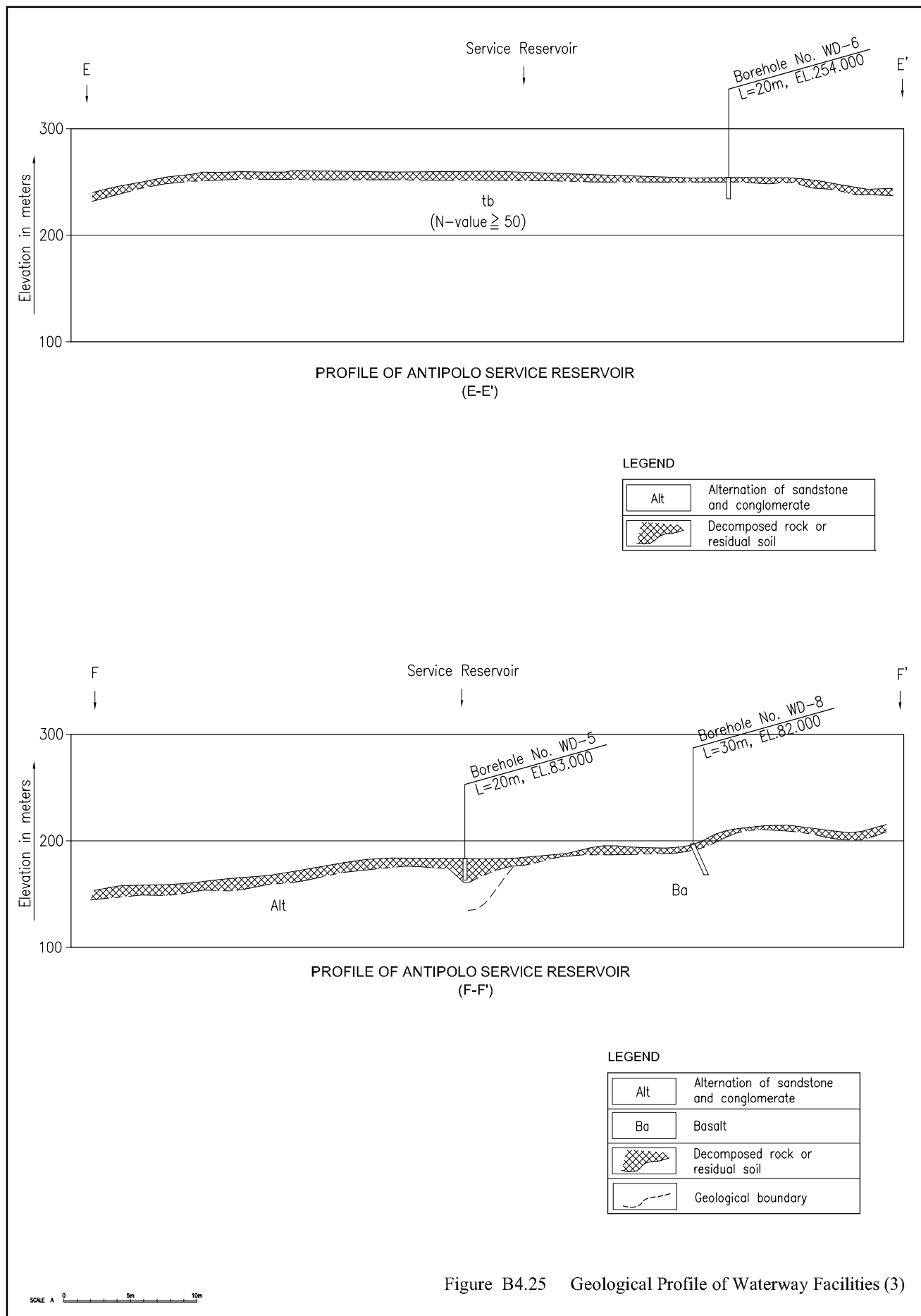
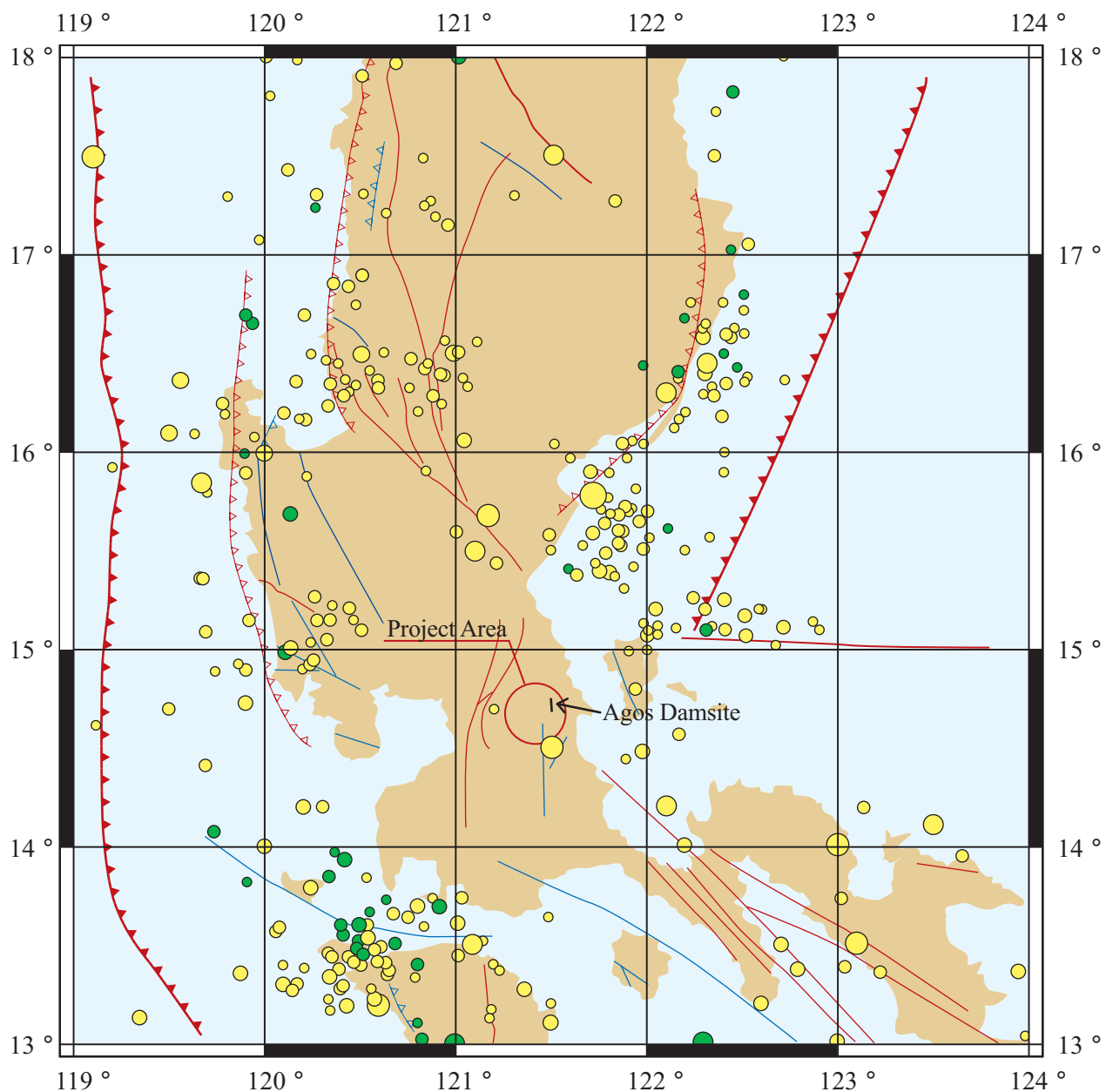


Figure B4.25 Geological Profile of Waterway Facilities (3)





Source: PHILVOLCS

Figure B5.1  
Significant Earthquake around Project Area  
( Magnitude ( Ms ) 5.0 and above 1907-2001 )



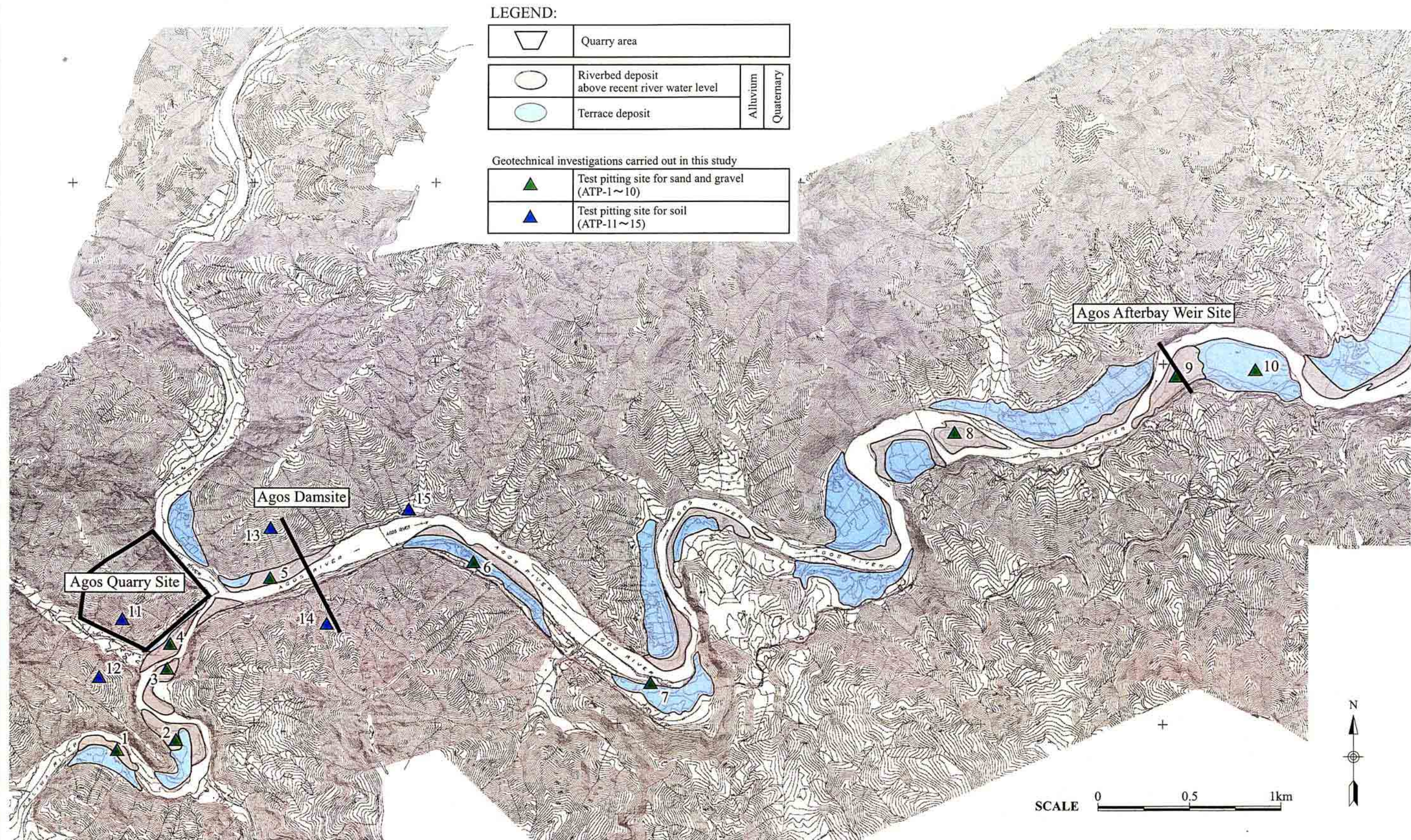


Figure B6.1 Location Map of Agos Borrow and Quarry