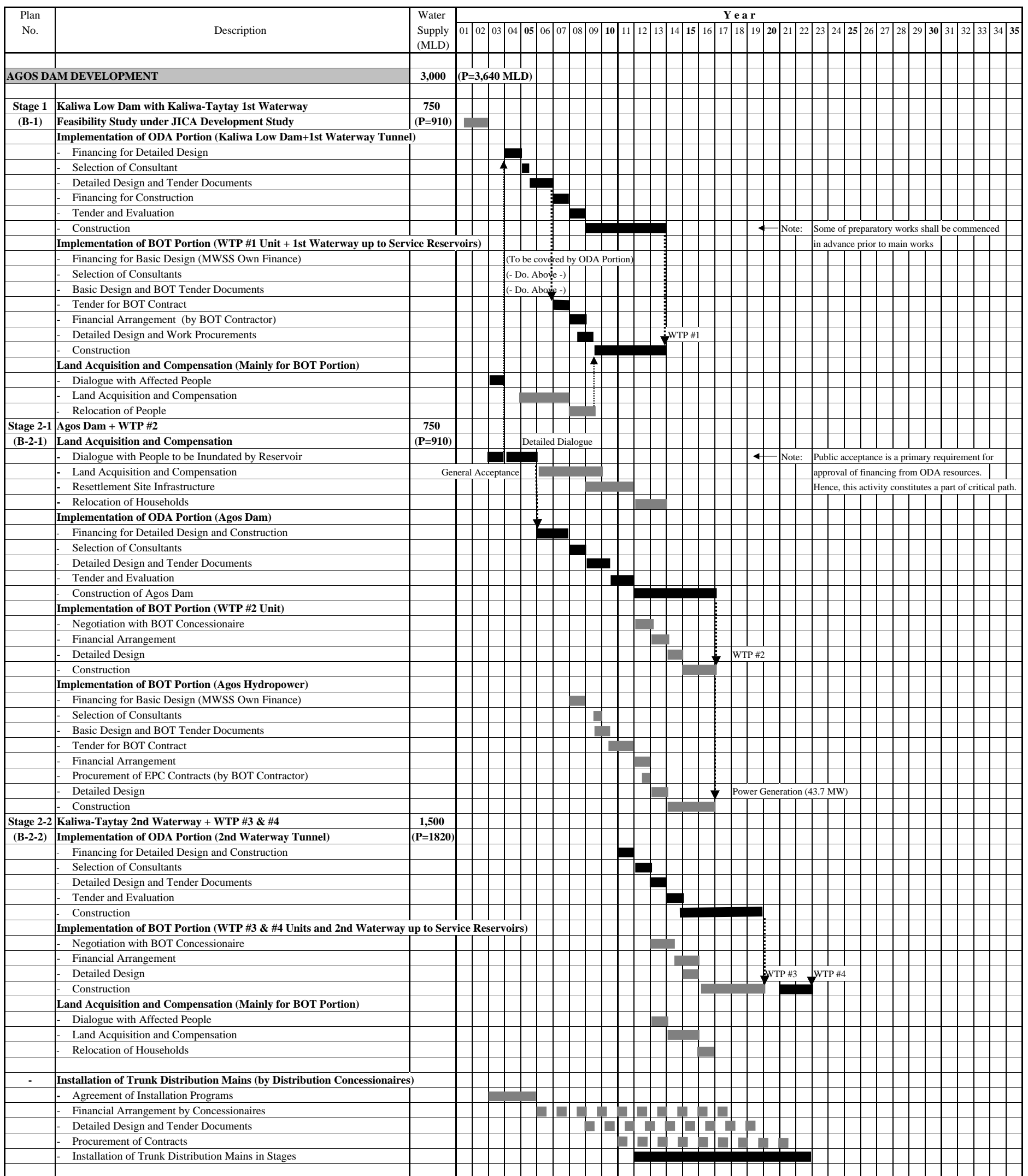


Figure F6.4 Preliminary Plan of Roads and Footpaths around the Proposed Agos Reservoir

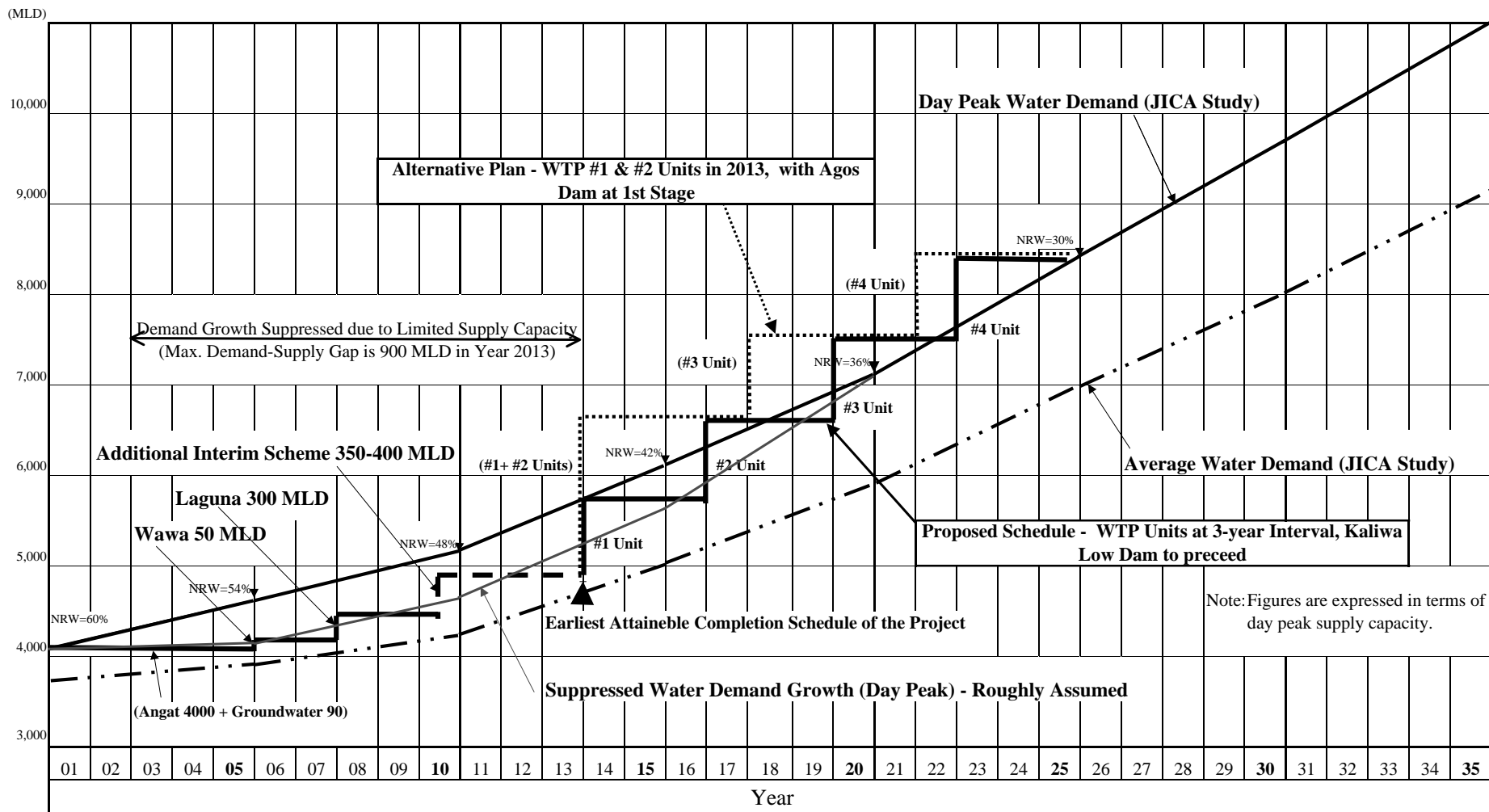


■ Critical Path Works ■ Activities and Works not on Critical Path

Note: Completion schedule of the Agos Dam development was assumed to be 2011 in the earlier Study (Interim Report). This is modified to 2013 in consideration of the following:
 (1) EIA survey identified the relatively strong opposition from local residents. This infers that time requirement for getting the public acceptance should be longer.
 (2) Financing for detailed design is now assumed to be from ODA fund resources, which will require some lead time.
 In the earlier study, financing from MWSS own budget had been assumed for the detailed design to expedite the implementation.

P=: Day peak water supply capacity,
 BOT: Build, operate and transfer,
 EPC: Engineering, Procurement and construction

Figure F8.1 Implementation Schedule of the Proposed Project (Schedule Meeting Demand up to Year 2025)



- Note: 1. In terms of demand-supply balance, most critical period will continue until 2013. This may cause the suppression of water demand growth to a serious extent for more than 10 years.
 2. In the above case, maximum demand-supply gap is as large as 900 MLD in 2013. This suggests the need of either the additional input of Interim Schemes or the acceleration of NRW Reduction program.

Figure F8.2 Day Peak Water Demand and Supply Capacity Balance

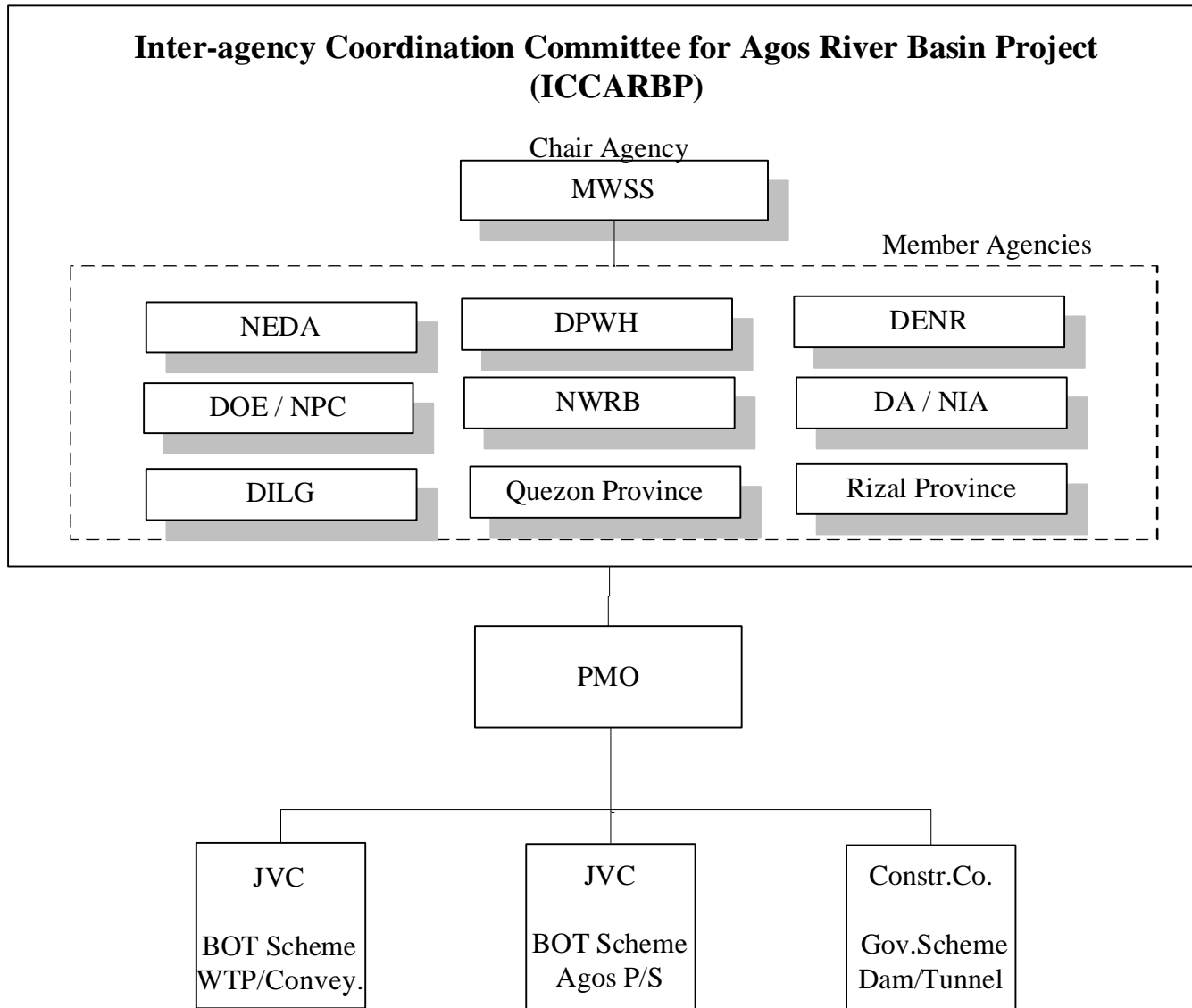


Figure F8.3 Proposed Organizational Structure of Inter-Agency Coordination Committee (ICCARBP)

*Water Resources Authority of the Philippines
(WRAP)*

*River Basin Authorities
(RBA)*

Approval

Recommendation / proposal

Chair Agency

NWRB

**Agos River Basin Committee
(ARBC)**

Member Agencies

Area of River Basin Dev't/
Management

Water resources
conservation

Water quality management

Water quantity
management
Water resources
development

Flood control

River environment
management

Delegation

Delegation

Delegation

DENR

NEDA

MWSS

DA/NIA

DOE/NPC

DILG

Provinces of Quezon
& Rizal

DPWH

Figure F8.4 Proposed Organizational Structure of Agos River Basin Committee (ARBC)