






LEGEND

	Access Road
	Access Path (Horse Path Grade)
	Footpath
	Boat Landing Place for Reservoir Crossing
	Bridge
Note: Layout and location of the proposed facilities are preliminary subject to further survey in subsequent phase.	

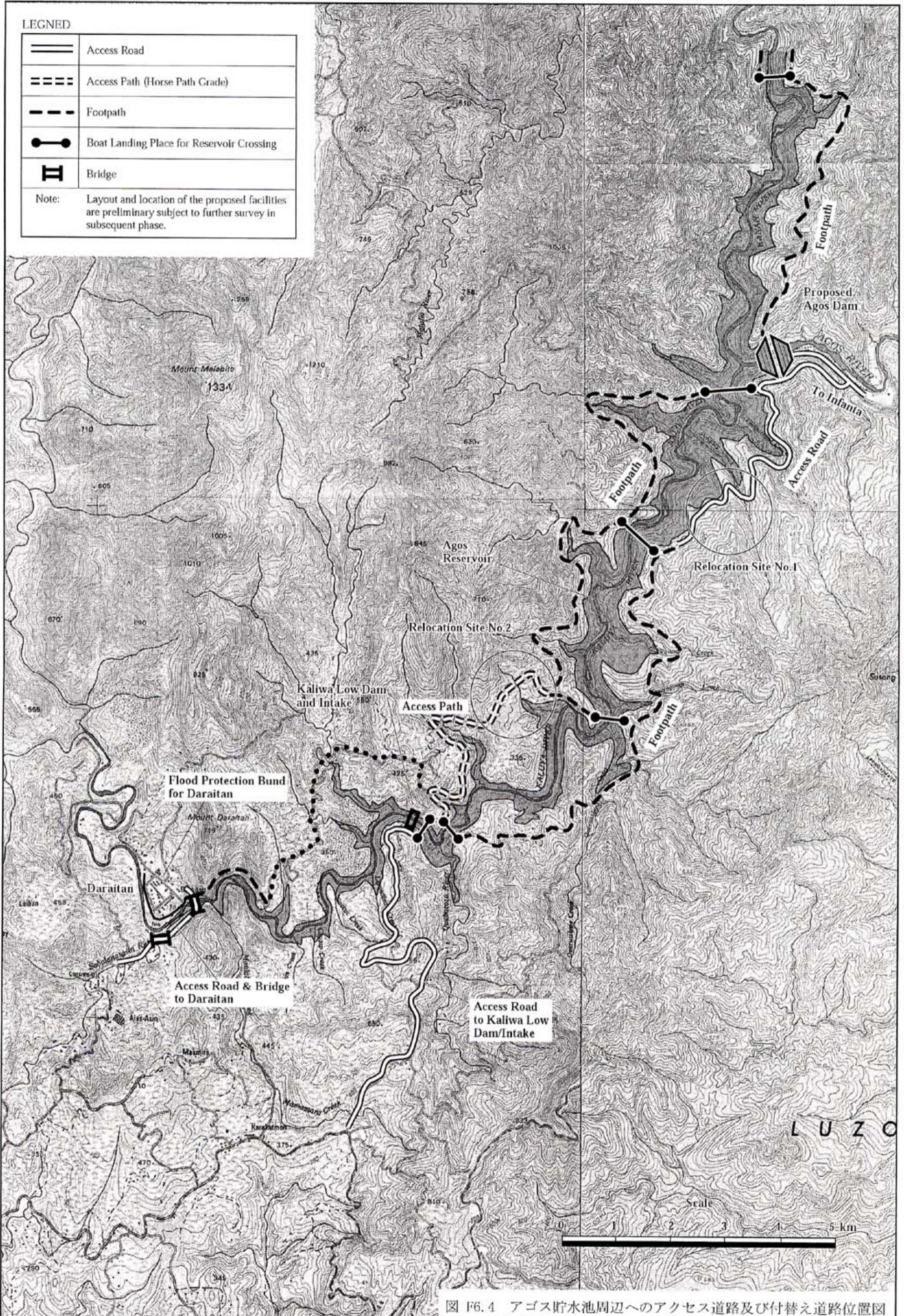
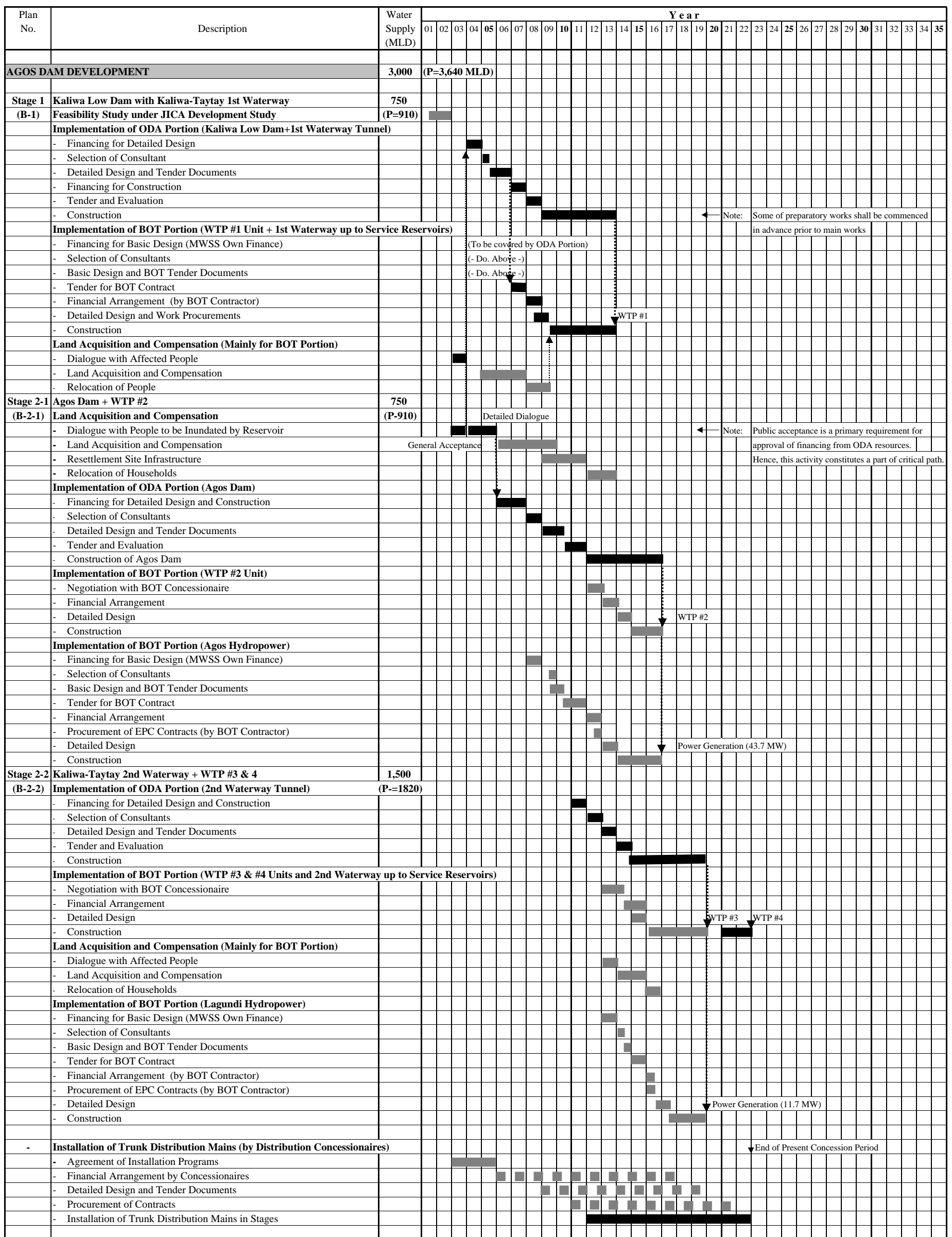


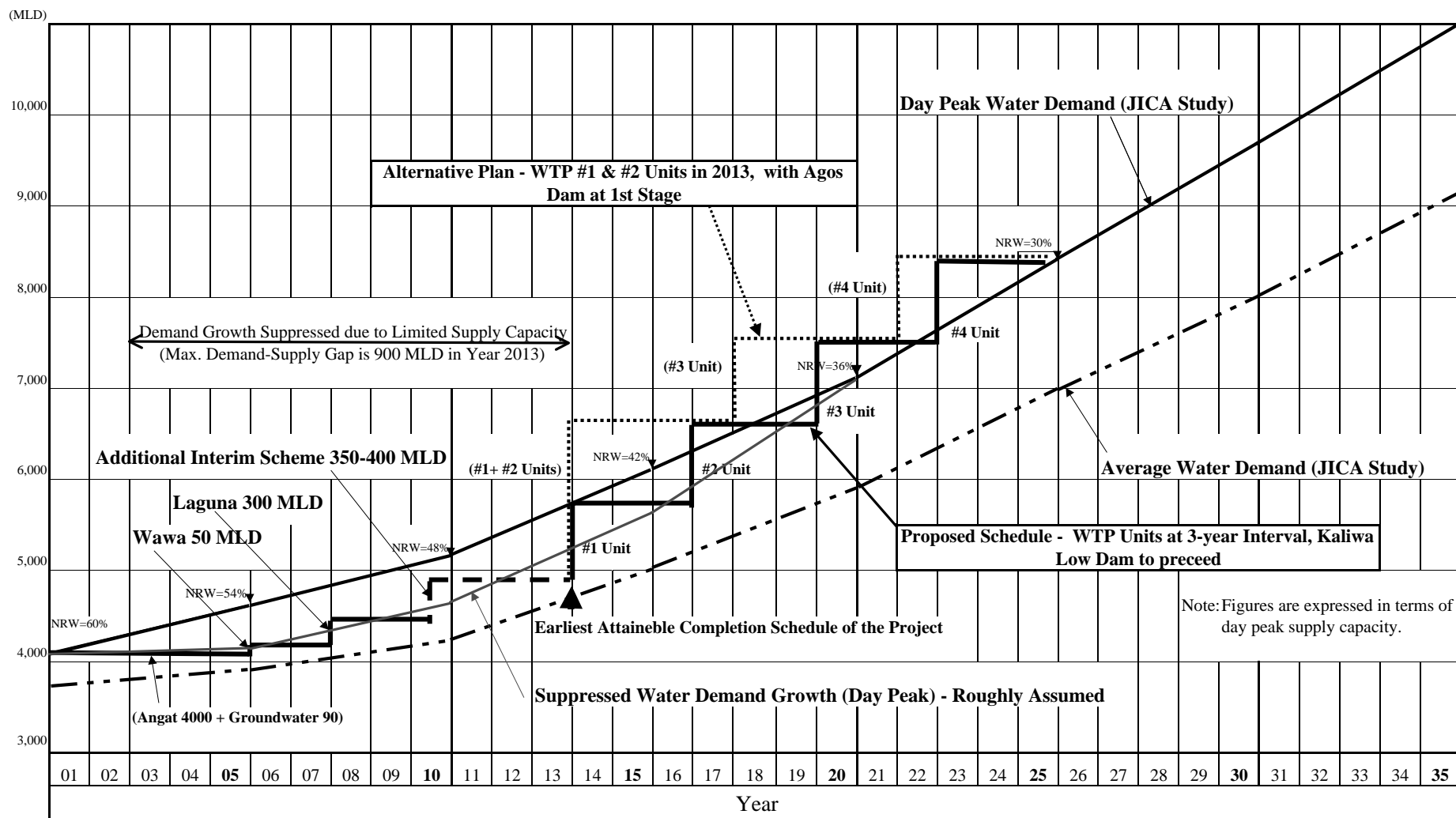
図 F6.4 アゴス貯水池周辺へのアクセス道路及び付替え道路位置図



■ Critical Path Works    ■ Activities and Works not on Critical Path

Note: Completion schedule of the Agos Dam development was assumed to be 2011 in the earlier Study (Interim Report). This is modified to 2013 in consideration of the following:  
 (1) EIA survey identified the relatively strong opposition from local residents. This infers that time requirement for getting the public acceptance should be longer.  
 (2) Financing for detailed design is now assumed to be from ODA fund resources, which will require some lead time.  
 In the earlier study, financing from MWSS own budget had been assumed for the detailed design to expedite the implementation.

図 F8.1 実施工程案



Note: 1. In terms of demand-supply balance, most critical period will continue until 2013. This may cause the suppression of water demand growth to a serious extent for more than 10 years.  
 2. In the above case, maximum demand-supply gap is as large as 900 MLD in 2013. This suggests the need of either the additional input of Interim Schemes or the acceleration of NRW Reduction program.

図 F8.2 水需要量と供給能力のバランス

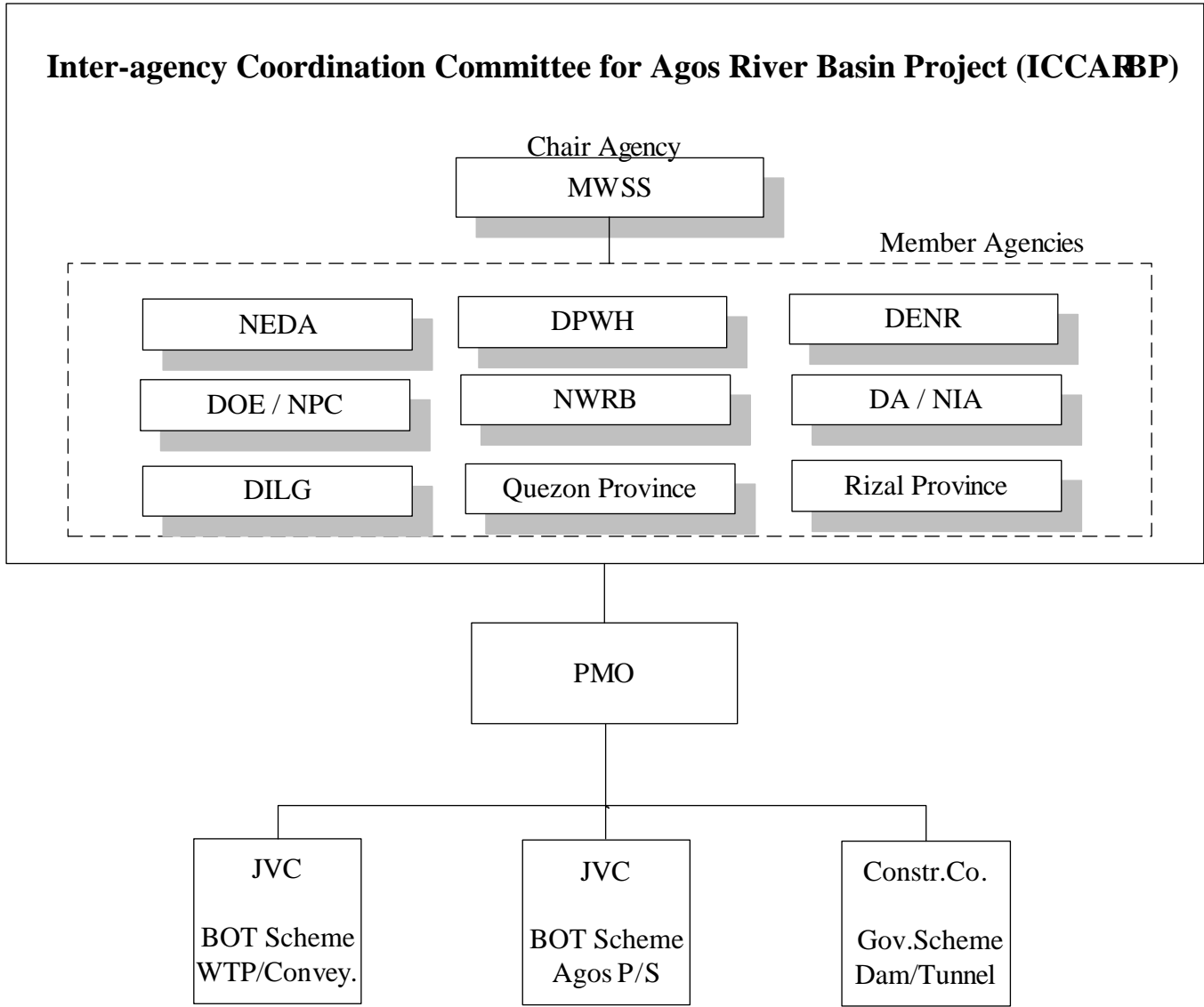


図 F8.3 アゴス川事業実施調整合同委員会 (ICCARBP)

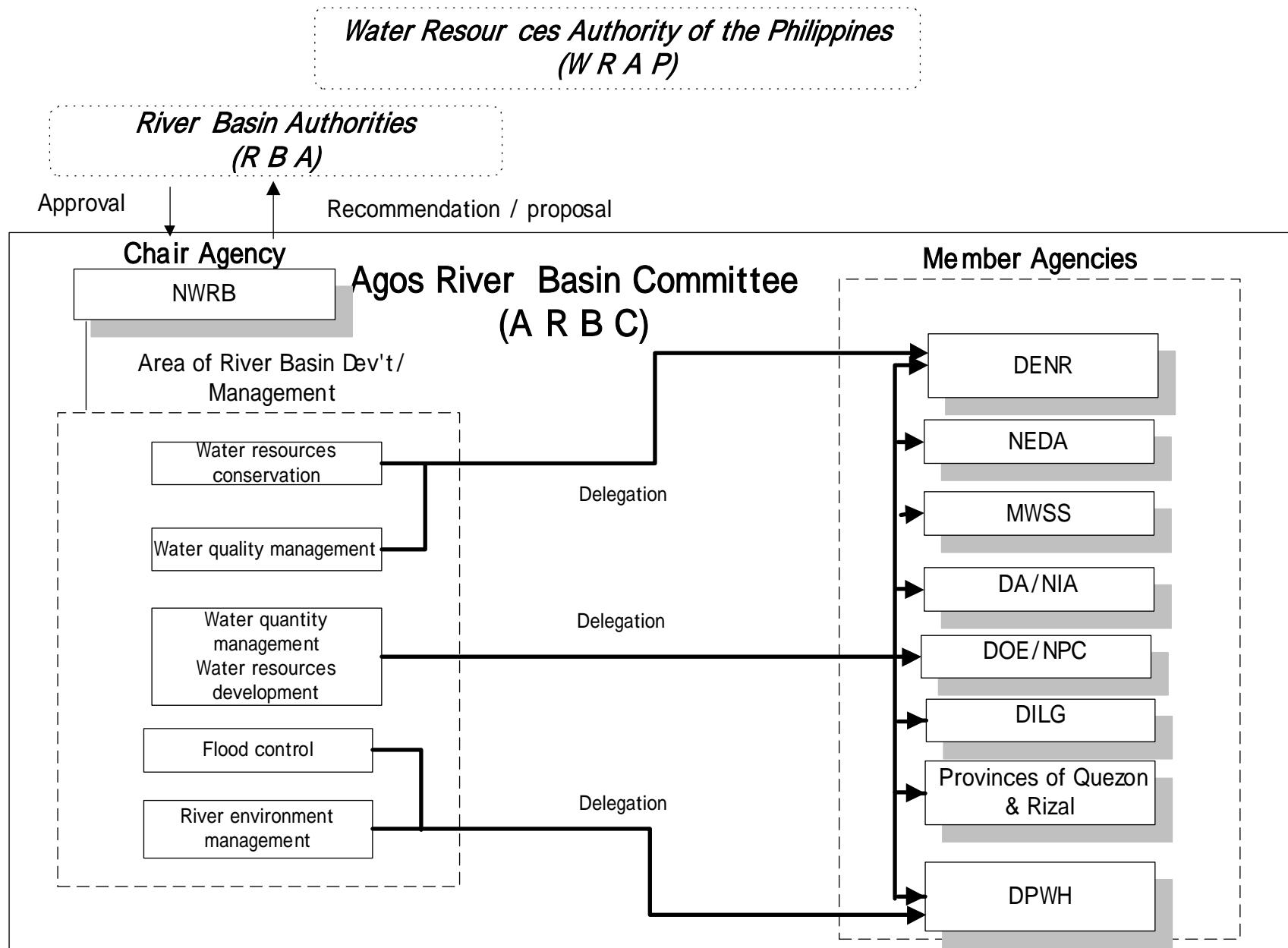


図 F8.4 アゴス川流域委員会 (ARBC)