

マニラ首都圏水資源開発計画調査  
最終報告書  
要約

付 図

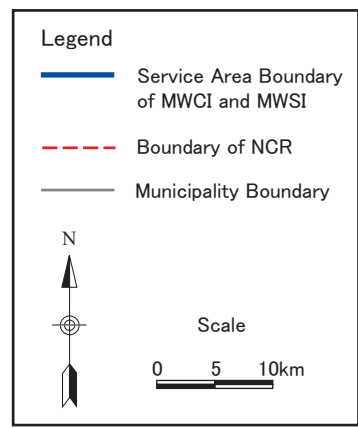
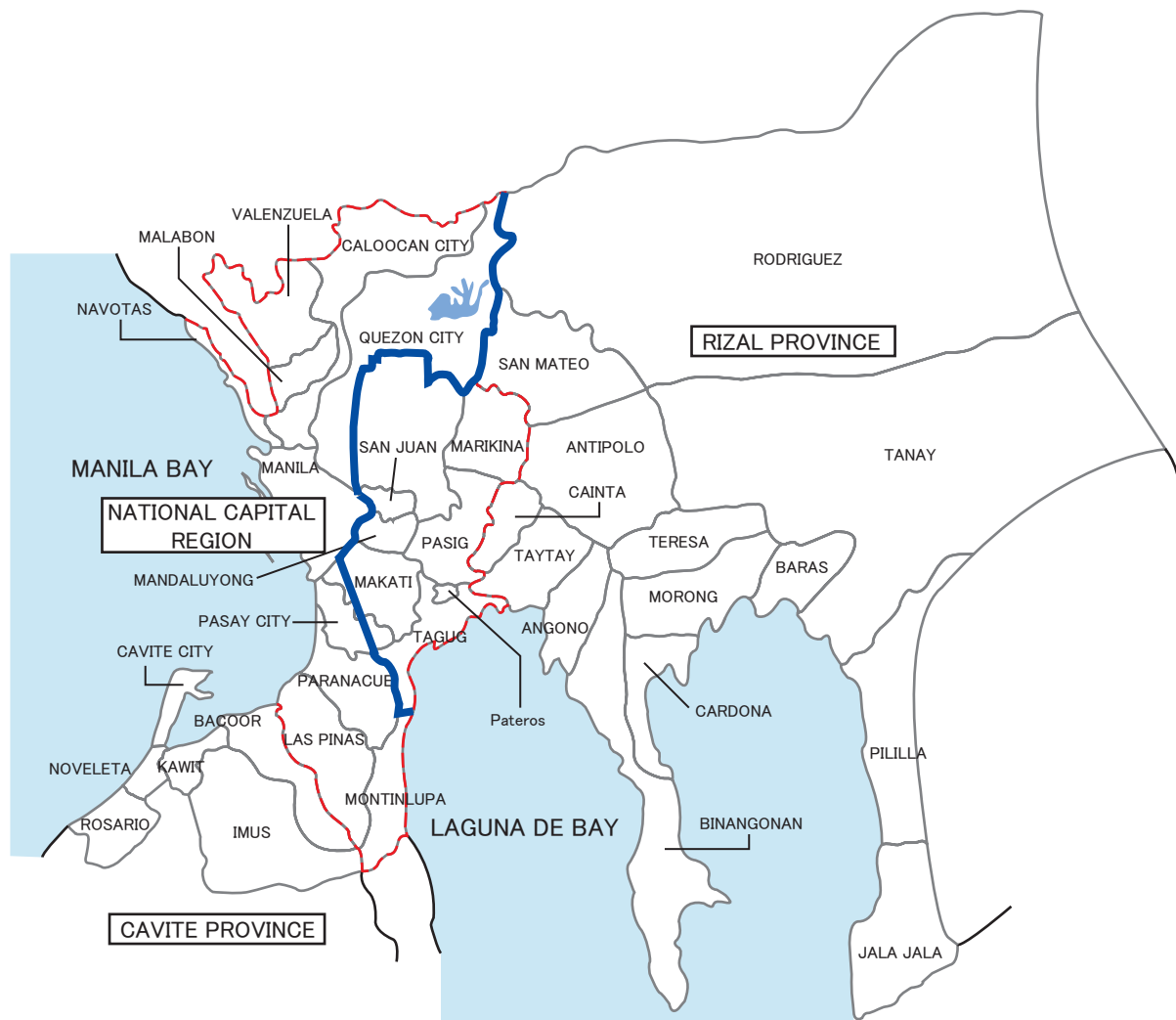
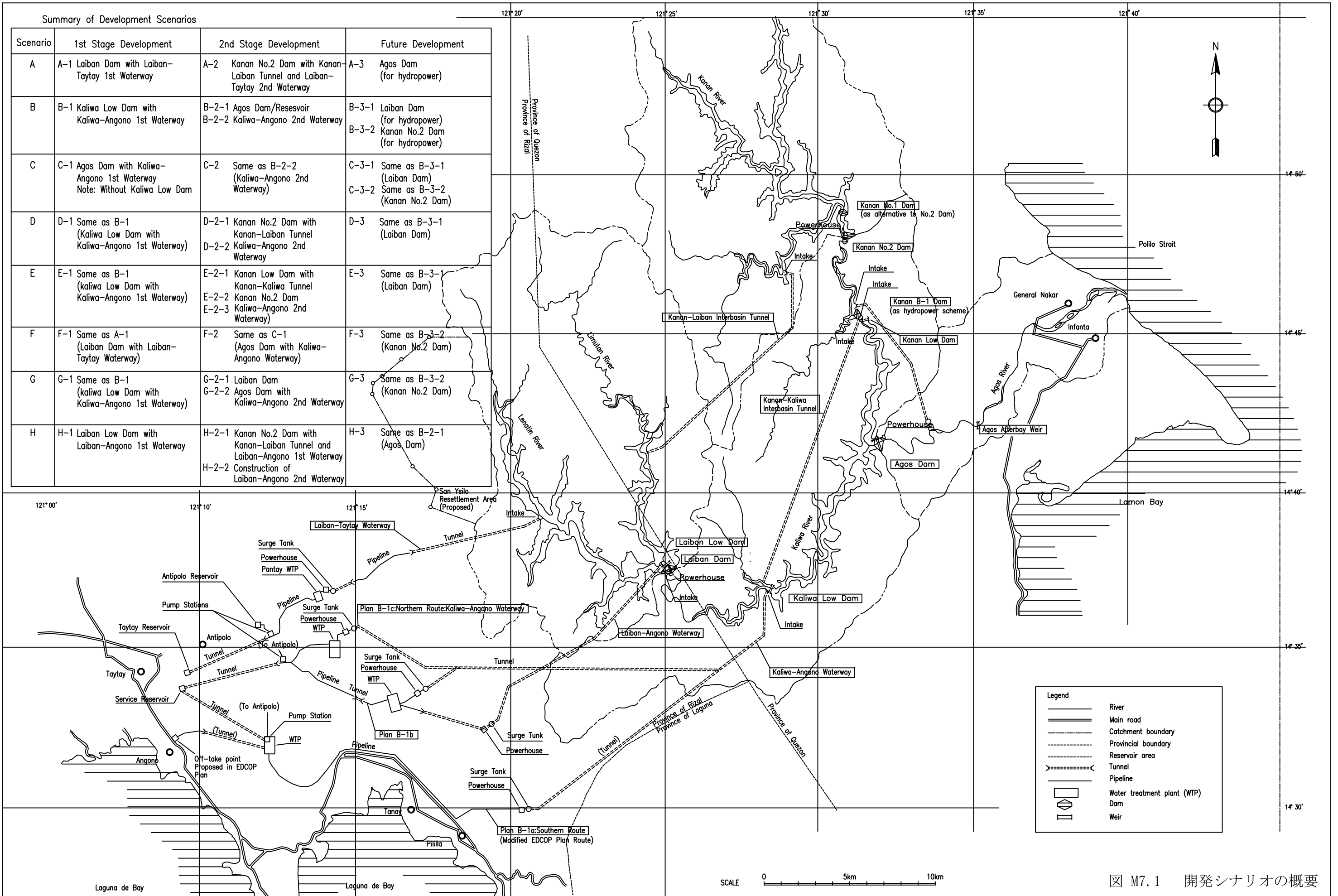


図 M1.1 MWCIおよびMWSIによる給水地区



Summary of Development Scenarios

Scenario	1st Stage Development	2nd Stage Development	Future Development
A	A-1 Laiban Dam with Laiban-Taytay 1st Waterway	A-2 Kanan No.2 Dam with Kanan-Laiban Tunnel and Laiban-Taytay 2nd Waterway	A-3 Agos Dam (for hydropower)
B	B-1 Kaliwa Low Dam with Kaliwa-Angono 1st Waterway	B-2-1 Agos Dam/Reservoir B-2-2 Kaliwa-Angono 2nd Waterway	B-3-1 Laiban Dam (for hydropower) B-3-2 Kanan No.2 Dam (for hydropower)
C	C-1 Agos Dam with Kaliwa-Angono 1st Waterway Note: Without Kaliwa Low Dam	C-2 Same as B-2-2 (Kaliwa-Angono 2nd Waterway)	C-3-1 Same as B-3-1 (Laiban Dam) C-3-2 Same as B-3-2 (Kanan No.2 Dam)
D	D-1 Same as B-1 (Kaliwa Low Dam with Kaliwa-Angono 1st Waterway)	D-2-1 Kanan No.2 Dam with Kanan-Laiban Tunnel D-2-2 Kaliwa-Angono 2nd Waterway	D-3 Same as B-3-1 (Laiban Dam)
E	E-1 Same as B-1 (Kaliwa Low Dam with Kaliwa-Angono 1st Waterway)	E-2-1 Kanan Low Dam with Kanan-Kaliwa Tunnel E-2-2 Kanan No.2 Dam E-2-3 Kaliwa-Angono 2nd Waterway	E-3 Same as B-3-1 (Laiban Dam)
F	F-1 Same as A-1 (Laiban Dam with Laiban-Taytay Waterway)	F-2 Same as C-1 (Agos Dam with Kaliwa-Angono Waterway)	F-3 Same as B-3-2 (Kanan No.2 Dam)
G	G-1 Same as B-1 (Kaliwa Low Dam with Kaliwa-Angono 1st Waterway)	G-2-1 Laiban Dam G-2-2 Agos Dam with Kaliwa-Angono 2nd Waterway	G-3 Same as B-3-2 (Kanan No.2 Dam)
H	H-1 Laiban Low Dam with Laiban-Angono 1st Waterway	H-2-1 Kanan No.2 Dam with Kanan-Laiban Tunnel and Laiban-Angono 1st Waterway H-2-2 Construction of Laiban-Angono 2nd Waterway	H-3 Same as B-2-1 (Agos Dam)

図 M7.1 開発シナリオの概要

PROPOSED MASTER PLAN

I. Master Development Plan towards Year 2025	II. Optional Development Plan
<p><u>Water Supply Development:</u></p> <p>W-1 Water Supply Development Project with Agos Dam                      -Stage1: Kaliwa Low Dam+1st Waterway+WTP#1                      -Stage2-1: Agos Dam+WTP#2                      -Stage2-2: 2nd Waterway+WTP#3 and #4</p>	<p><u>Optional Water Supply Development:</u></p> <p>W-2 Water Supply Development Project with Laiban Dam                      (as alternative development option to be implemented in advance of W-1)</p>
<p><u>Hydropower Development:</u></p> <p>P-1 Abuyod Power Station 12.5MW                      P-2 Agos Power Station 85.6MW</p>	<p><u>Optional Hydropower Development:</u></p> <p>P-3 Kanan No.2 Power Station 209.5MW                      P-4 Pantay Power Station 22.6MW (in case of W-1)</p>
<p><u>Projects for Mitigation of Socio-Environmental Issues:</u></p> <p>E-1 Monitoring of Morphological Change of Alluvial Plain and Coastal Line                      E-2 Resettlement Schemes                      E-3 Watershed Management in Kaliwa River Basin                      E-4 Monitoring of Ecosystem in Kanan-Agos Watershed</p>	<p><u>Optional Projects for Mitigation of Socio-Environmental Issues:</u></p> <p>E-2 Resettlement Schemes</p>
<p><u>Projects for Regional Development:</u></p> <p>R-1 Bank Erosion Protection Work in Infanta-General Nakar Alluvial Plain                      R-2 Provision of River Facilities for Facilitating the Use of River (in the river reach downstream from Agos Dam)                      R-3 Construction of Access Roads/Footpaths for Enhancement of Regional Economic Activities                      R-4 Establishment of a Vocational Training Center at Barangay Daraitan                      R-5 Establishment of a Medical Clinic at Barangay Daraitan                      R-6 Power Supply to Infanta-General Nakar Area</p>	<p><u>Optional Projects for Regional Development:</u></p> <p>R-3 Construction of Access Roads/Footpaths for Enhancement of Regional Economic Activities</p>

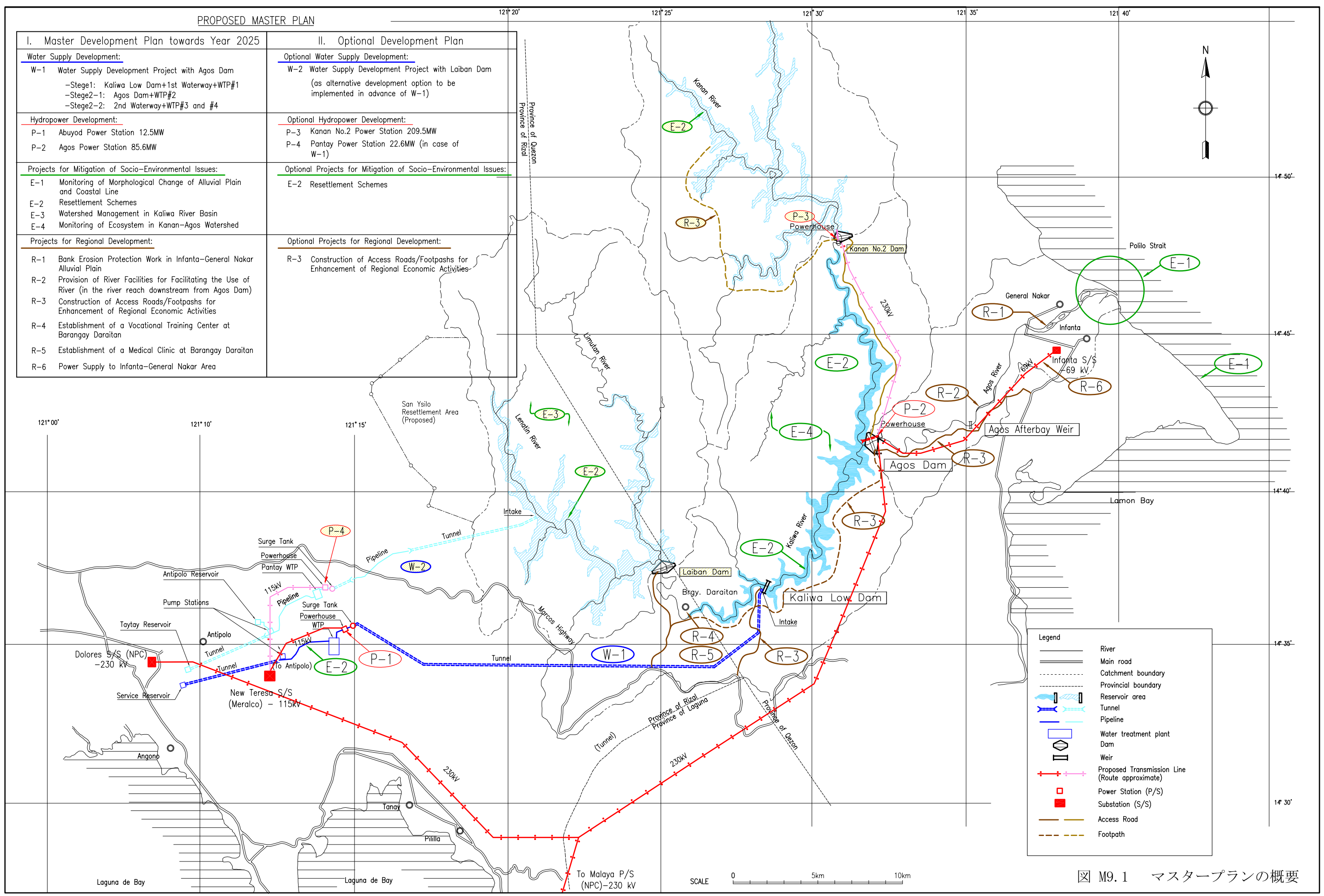
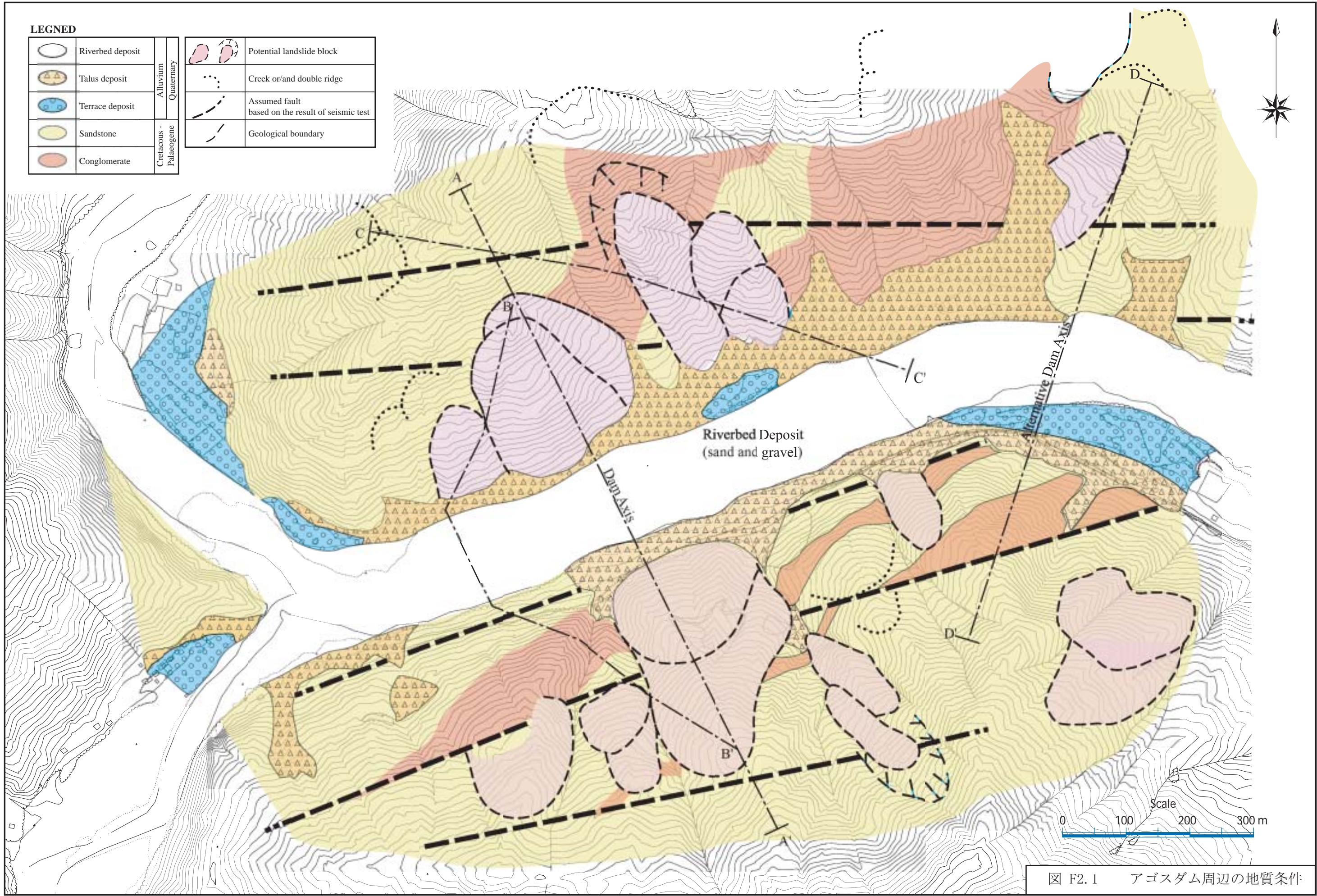


図 M9.1 マスタープランの概要



**LEGEND**

	Riverbed deposit	Alluvium Quaternary		Potential landslide block
	Talus deposit			Creek or/and double ridge
	Terrace deposit			Assumed fault based on the result of seismic test
	Sandstone	Cretaceous - Palaeogene		Geological boundary
	Conglomerate			

図 F2.1 アゴスダム周辺の地質条件