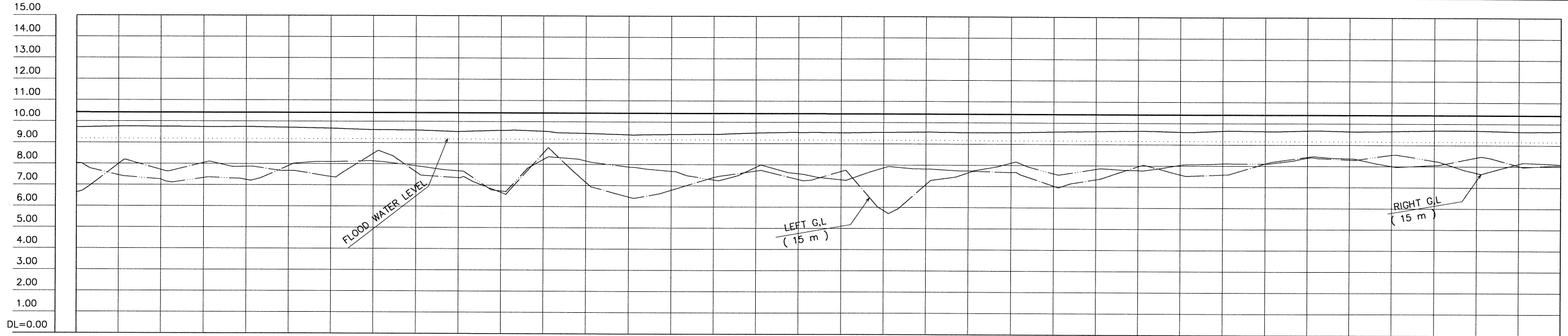
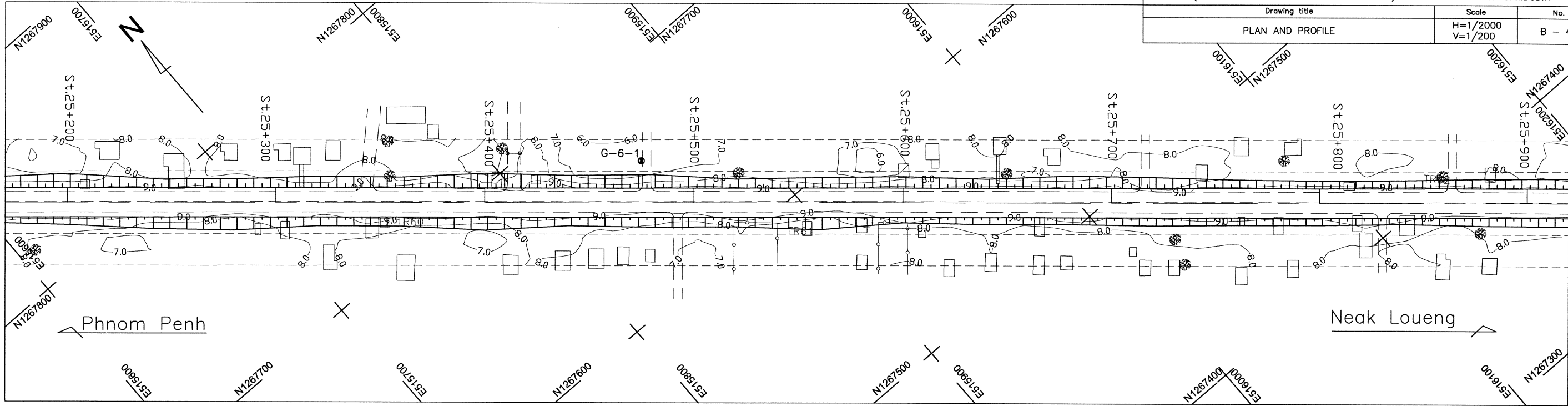
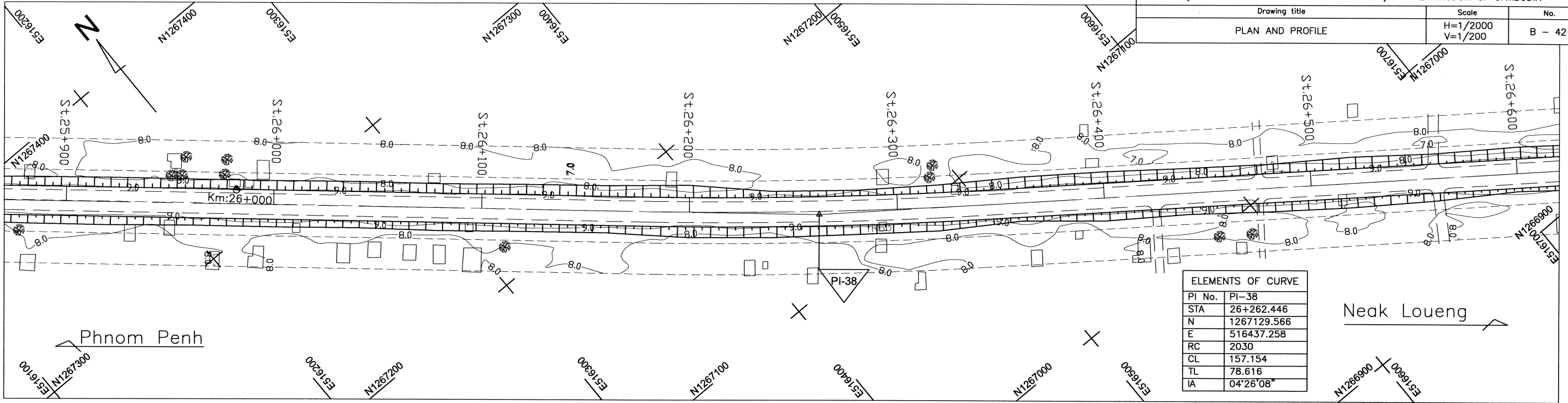


VERTICAL ALIGNMENT	$i = -0.005\%$ $L = 3860.00$																																					
PAVEMENT HEIGHT	10.462	10.462	10.461	10.460	10.459	10.458	10.457	10.456	10.455	10.454	10.453	10.452	10.451	10.451	10.450	10.449	10.448	10.447	10.446	10.445	10.444	10.443	10.442	10.441	10.440	10.439	10.439	10.438	10.437	10.436	10.435	10.434	10.433	10.432	10.431	10.430		
GROUND HEIGHT	9.72	9.71	9.74	9.79	9.83	9.83	9.86	9.83	9.78	9.73	9.72	9.68	9.75	9.78	9.84	9.85	9.77	9.73	9.73	9.74	9.76	9.79	9.82	9.81	9.78	9.78	9.75	9.77	9.71	9.70	9.73	9.72	9.73	9.72	9.71	9.72	9.71	9.72
STATION	-24+500	-24+520	-24+540	-24+560	-24+580	-24+600	-24+620	-24+640	-24+660	-24+680	-24+700	-24+720	-24+740	-24+760	-24+780	-24+800	-24+820	-24+840	-24+860	-24+880	-24+900	-24+920	-24+940	-24+960	-24+980	-25+000	-25+020	-25+040	-25+060	-25+080	-25+100	-25+120	-25+140	-25+160	-25+180	-25+200		
HORIZONTAL CURVATURE	$R_c = \infty$ $L = 1675.844$																																					
SUPER-ELEVATION	NC																																					
CROSS SECTION TYPE	TYPE-E																																					

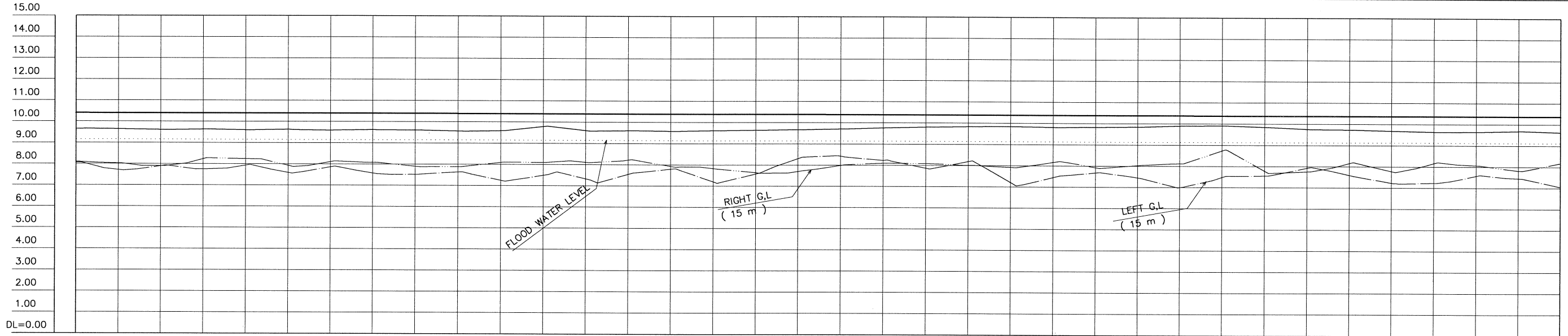


VERTICAL ALIGNMENT	$i = -0.005\%$ $L = 3860.00$																																			
PAVEMENT HEIGHT	10.430	10.429	10.428	10.428	10.427	10.426	10.425	10.424	10.423	10.422	10.421	10.420	10.419	10.418	10.417	10.417	10.416	10.415	10.414	10.413	10.412	10.411	10.410	10.409	10.408	10.407	10.406	10.406	10.405	10.404	10.403	10.402	10.401	10.400	10.399	10.398
GROUND HEIGHT	9.72	9.76	9.75	9.73	9.74	9.71	9.67	9.60	9.59	9.53	9.59	9.55	9.46	9.40	9.42	9.43	9.50	9.53	9.52	9.54	9.56	9.54	9.54	9.58	9.61	9.64	9.59	9.65	9.63	9.67	9.63	9.65	9.68	9.69	9.64	9.65
STATION	-25+200	-25+220	-25+240	-25+260	-25+280	-25+300	-25+320	-25+340	-25+360	-25+380	-25+400	-25+420	-25+440	-25+460	-25+480	-25+500	-25+520	-25+540	-25+560	-25+580	-25+600	-25+620	-25+640	-25+660	-25+680	-25+700	-25+720	-25+740	-25+760	-25+780	-25+800	-25+820	-25+840	-25+860	-25+880	-25+900
HORIZONTAL CURVATURE	$R_c = \infty$ $L = 1675.844$																																			
SUPER-ELEVATION	NC																																			
CROSS SECTION TYPE	TYPE-E																			TYPE-E																



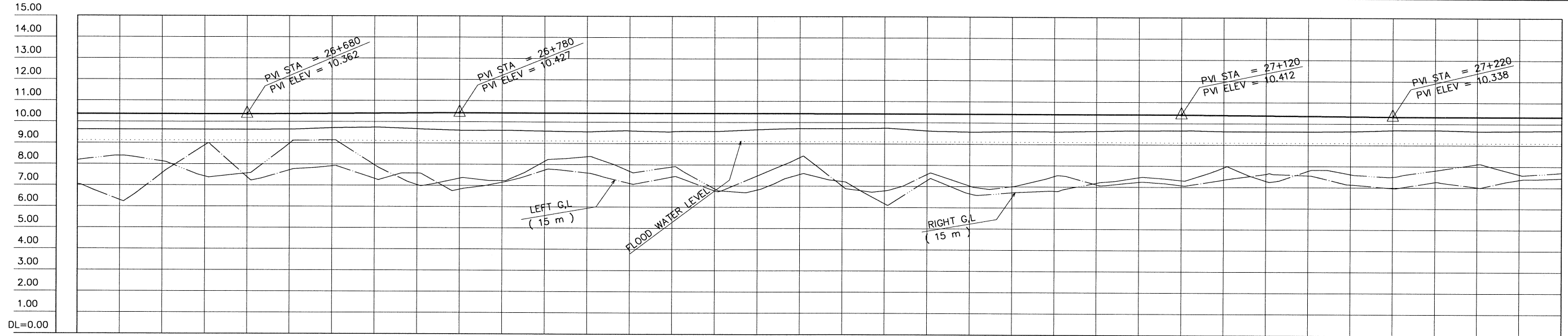
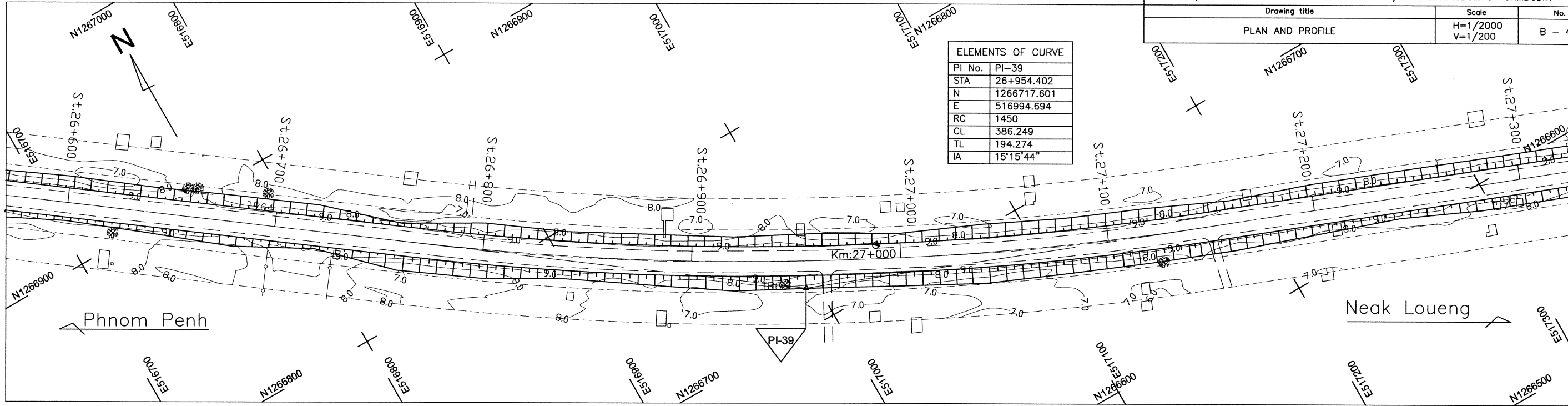
ELEMENTS OF CURVE	
PI No.	PI-38
STA	26+262.446
N	1267129.566
E	516437.258
RC	2030
CL	157.154
TL	78.616
IA	04°26'08"

Neak Loueng

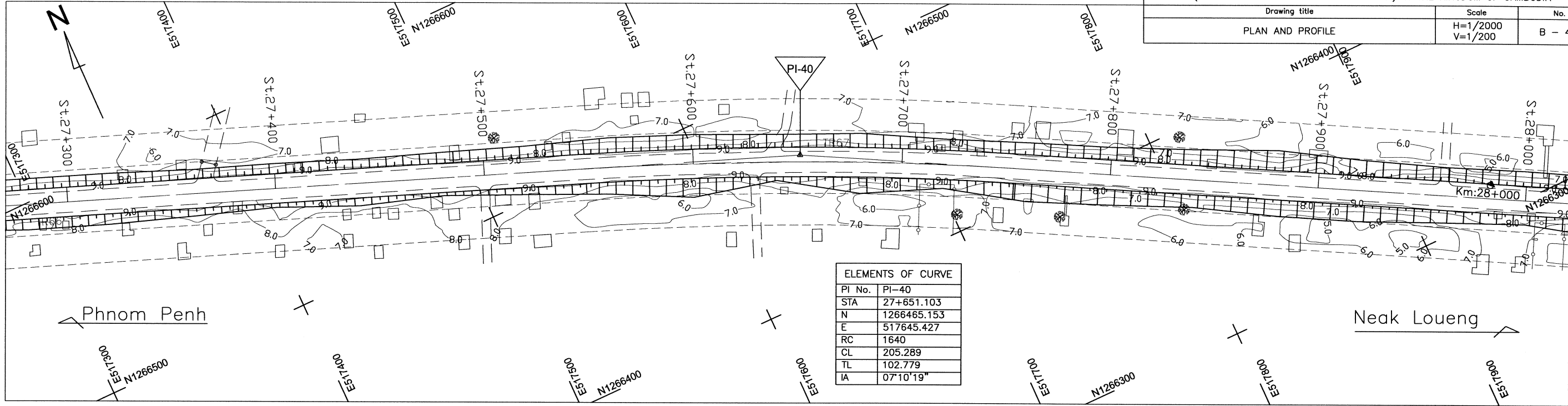


VERTICAL ALIGNMENT	I = -0.005% L = 3860.00																																															
PAVEMENT HEIGHT	-10.398	-10.397	-10.396	-10.395	-10.394	-10.394	-10.393	-10.392	-10.391	-10.390	-10.389	-10.388	-10.387	-10.386	-10.385	-10.384	-10.383	-10.383	-10.382	-10.381	-10.380	-10.379	-10.378	-10.377	-10.376	-10.375	-10.374	-10.373	-10.372	-10.372	-10.371	-10.370	-10.369	-10.368	-10.367	-10.366												
GROUND HEIGHT	9.65	9.64	9.61	9.63	9.60	9.63	9.59	9.62	9.61	9.56	9.58	9.79	9.60	9.61	9.58	9.62	9.64	9.67	9.70	9.76	9.80	9.83	9.84	9.81	9.83	9.84	9.89	9.91	9.85	9.76	9.73	9.68	9.64	9.65	9.69	9.64												
STATION	-25+900	-25+920	-25+940	-25+960	-25+980	-26+000	-26+020	-26+040	-26+060	-26+080	-26+100	-26+120	-26+140	-26+160	-26+180	-26+200	-26+220	-26+240	-26+260	-26+280	-26+300	-26+320	-26+340	-26+360	-26+380	-26+400	-26+420	-26+440	-26+460	-26+480	-26+500	-26+520	-26+540	-26+560	-26+580	-26+600												
HORIZONTAL CURVATURE	Rc=8 L=1675.844												BC	Rc=2030 Lc=157.154										EC	Rc=∞ L=420.254																							
SUPER-ELEVATION	NC												-3.00	-3.00	-3.00	-3.00	-3.00	-3.00	-3.00	-3.00	-3.00	-3.00	-3.00	-3.00	-3.00	-3.00	-3.00	-3.00	-3.00	-3.00	-3.00	-3.00	-3.00	-3.00	-3.00	-3.00	-3.00	-3.00	-3.00	-3.00	-3.00	-3.00	-3.00	-3.00	-3.00	-3.00	-3.00	-3.00
CROSS SECTION TYPE	TYPE-E																																															

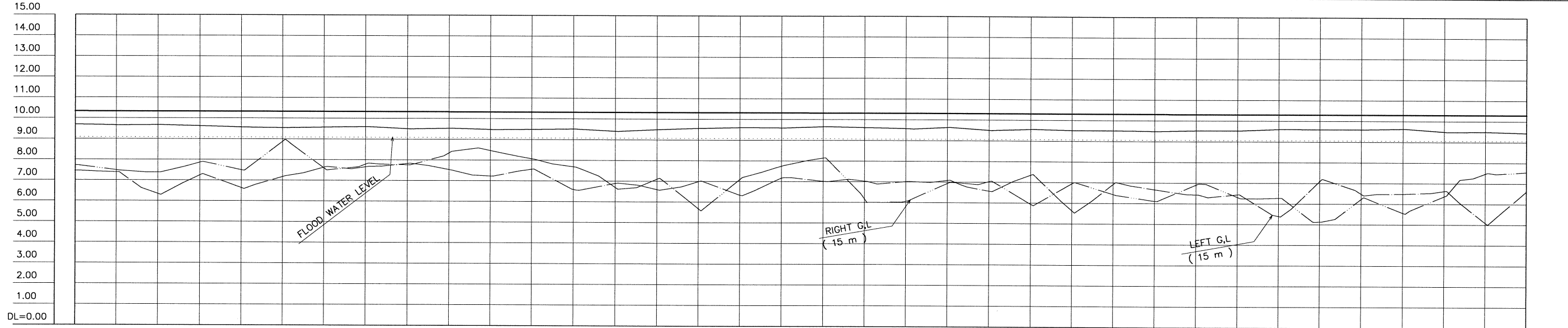
ELEMENTS OF CURVE	
PI No.	PI-39
STA	26+954.402
N	1266717.601
E	516994.694
RC	1450
CL	386.249
TL	194.274
IA	15°15'44"



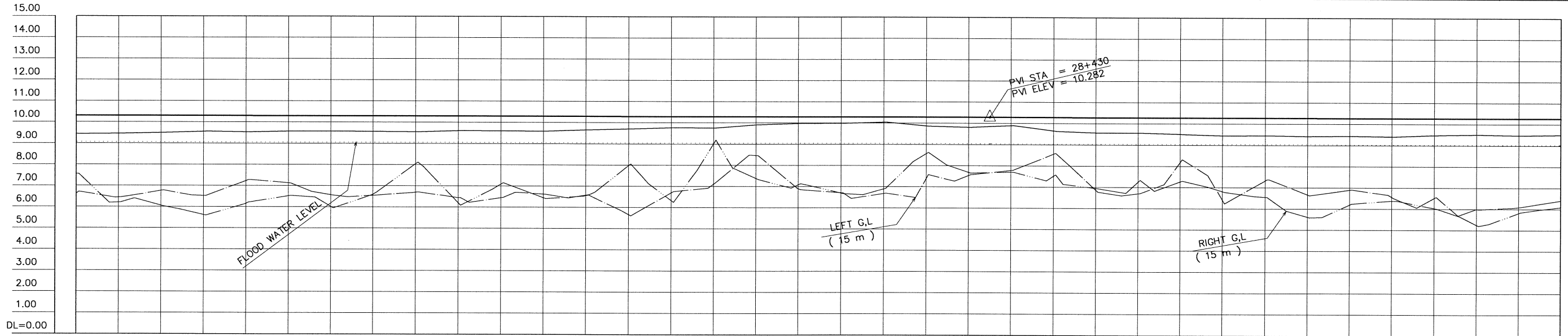
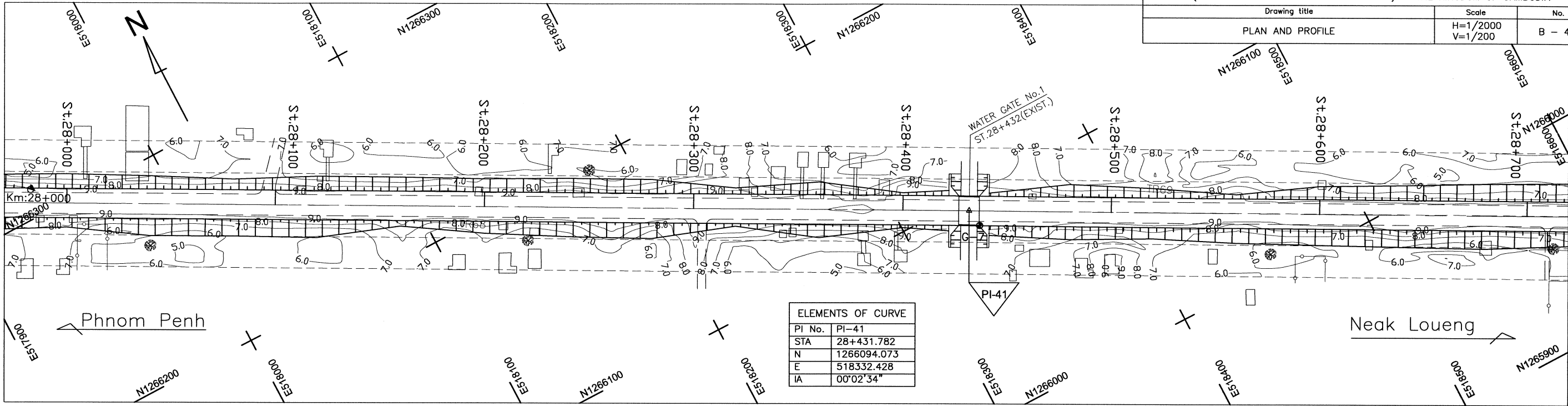
VERTICAL ALIGNMENT	PANEMENT HEIGHT	GROUND HEIGHT	STATION	HORIZONTAL CURVATURE	SUPER-ELEVATION	CROSS SECTION TYPE
$I = -0.005\%$ $L = 3860.00$	10.366	9.64	-26+600	$R_c = 8$ $L = 420.254$	NC	TYPE-E
10.362	9.63	-26+620				
$I = -0.065\%$ $L = 100.00$	10.364	9.63	-26+640	BC	NC	TYPE-E
10.363	9.63	-26+660				
10.362	10.375	9.63	-26+680	$R_c = 1450$ $L_c = 386.249$	$e = 3\%$	TYPE-E
10.362	10.375	-26+700				
10.427	10.388	9.71	-26+720	EC	NC	TYPE-E
10.427	10.388	-26+740				
10.427	10.401	9.74	-26+760	$R_c = 8$ $L = 400.932$	NC	TYPE-E
10.427	10.401	-26+780				
10.427	10.414	9.67	-26+800			
10.426	10.427	9.60	-26+820			
10.425	10.427	9.60	-26+840			
10.424	10.426	9.58	-26+860			
10.423	10.425	9.55	-26+880			
10.422	10.424	9.60	-26+900			
10.421	10.423	9.56	-26+920			
10.420	10.422	9.58	-26+940			
10.419	10.421	9.71	-26+960			
10.418	10.419	9.72	-26+980			
10.418	10.418	9.74	-27+000			
10.417	10.417	9.62	-27+020			
10.416	10.416	9.57	-27+040			
10.415	10.415	9.61	-27+060			
10.414	10.414	9.60	-27+080			
10.413	10.413	9.63	-27+100			
10.412	10.412	9.66	-27+120			
10.397	10.397	9.67	-27+140			
10.382	10.382	9.63	-27+160			
10.367	10.367	9.63	-27+180			
10.352	10.352	9.63	-27+200			
10.338	10.352	9.65	-27+220			
10.337	10.338	9.71	-27+240			
10.336	10.337	9.71	-27+260			
10.335	10.336	9.66	-27+280			
10.334	10.335	9.67	-27+300			



ELEMENTS OF CURVE	
PI No.	PI-40
STA	27+651.103
N	1266465.153
E	517645.427
RC	1640
CL	205.289
TL	102.779
IA	07°10'19"



VERTICAL ALIGNMENT	I = -0.005% L = 1210.00																																												
PAVEMENT HEIGHT	-10.334	-10.333	-10.332	-10.331	-10.330	-10.329	-10.328	-10.327	-10.327	-10.326	-10.325	-10.324	-10.323	-10.322	-10.321	-10.320	-10.319	-10.318	-10.317	-10.316	-10.316	-10.315	-10.314	-10.313	-10.312	-10.311	-10.310	-10.309	-10.308	-10.307	-10.306	-10.305	-10.304	-10.304	-10.303	-10.302									
GROUND HEIGHT	9.69	9.66	9.67	9.62	9.56	9.54	9.57	9.60	9.51	9.53	9.47	9.49	9.51	9.41	9.49	9.56	9.61	9.59	9.65	9.61	9.58	9.63	9.51	9.56	9.51	9.51	9.49	9.53	9.53	9.60	9.60	9.60	9.63	9.50	9.50	9.44									
STATION	-27+300	-27+320	-27+340	-27+360	-27+380	-27+400	-27+420	-27+440	-27+460	-27+480	-27+500	-27+520	-27+540	-27+560	-27+580	-27+600	-27+620	-27+640	-27+660	-27+680	-27+700	-27+720	-27+740	-27+760	-27+780	-27+800	-27+820	-27+840	-27+860	-27+880	-27+900	-27+920	-27+940	-27+960	-27+980	-28+000									
HORIZONTAL CURVATURE	Rc=8 L=400.932										BC	Rc=1640 Lc=205.289										EC	Rc=8 L=678.035																						
SUPER-ELEVATION	NC										-3.00	-3.00	-3.00	-3.00	-3.00	-3.00	-3.00	-3.00	-3.00	-3.00	-3.00	-3.00	-3.00	-3.00	-3.00	-3.00	-3.00	-3.00	-3.00	-3.00	-3.00	-3.00	-3.00	-3.00	-3.00	-3.00	-3.00	-3.00	-3.00	-3.00	-3.00	-3.00	-3.00	-3.00	-3.00
CROSS SECTION TYPE	TYPE-E																																												

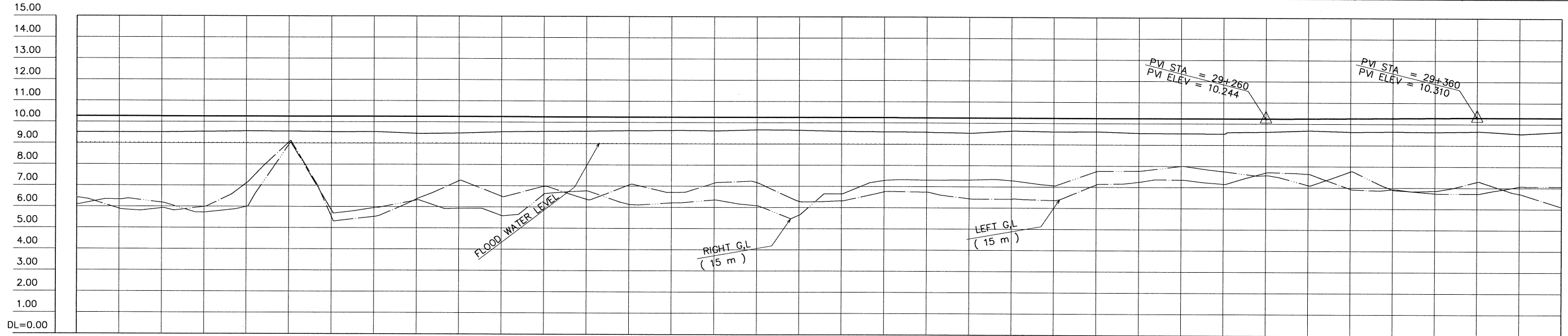
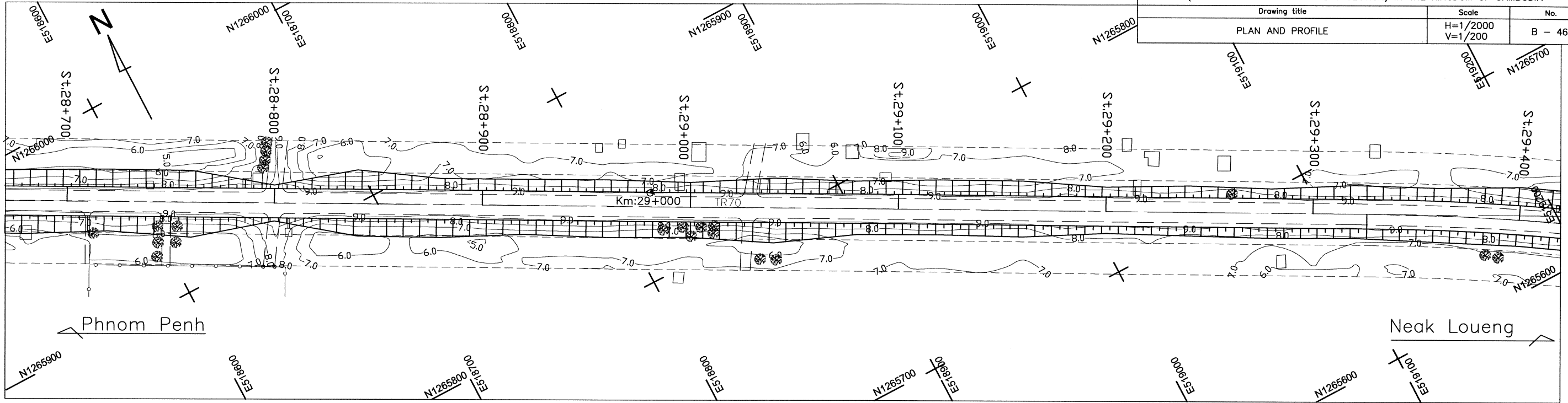


VERTICAL ALIGNMENT	GRADE	
	$i = -0.005\%$	$L = 1210.00$
	$i = -0.005\%$	$L = 830.00$

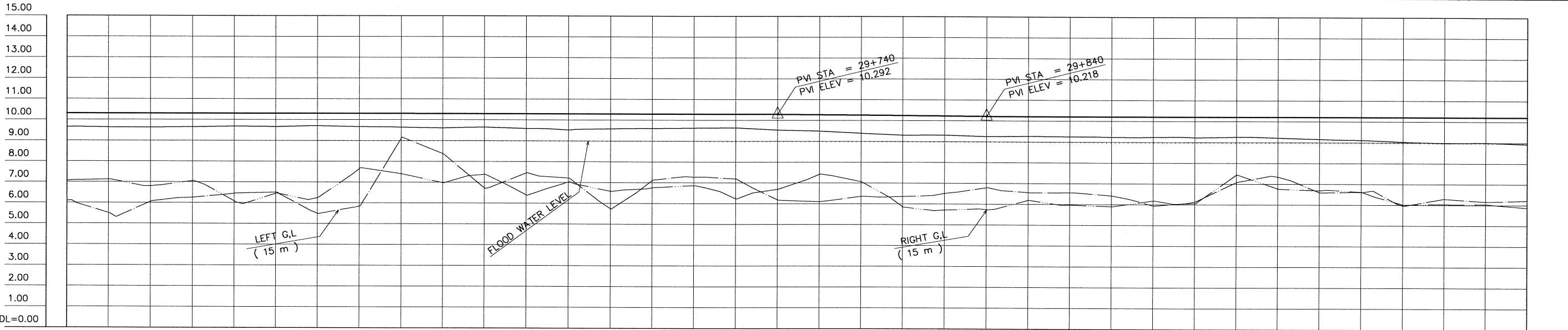
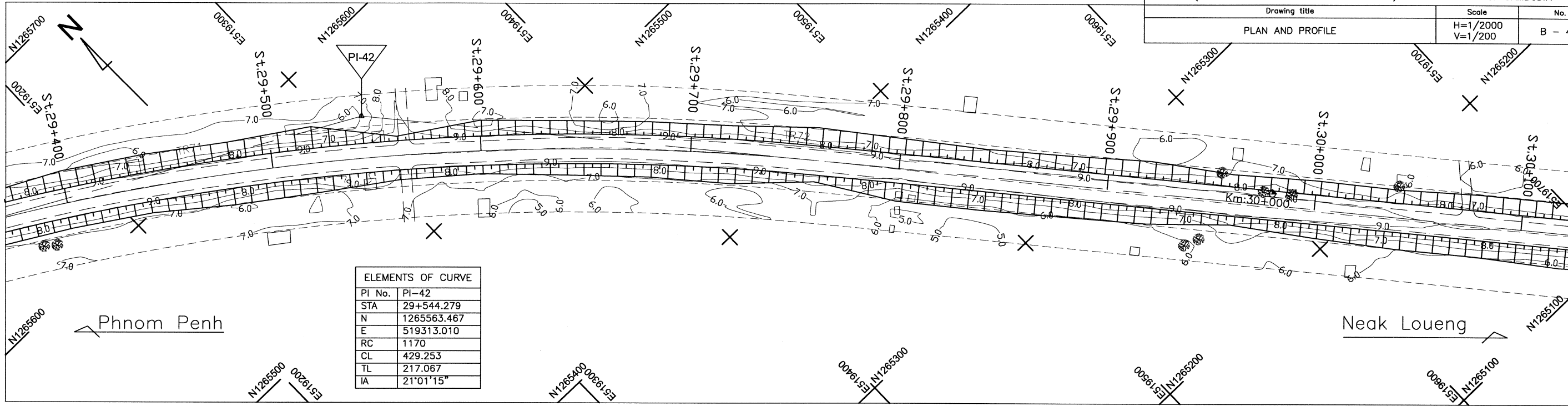
PAVEMENT HEIGHT	GROUND HEIGHT	STATION
10.302	9.44	-28+000
10.301	9.45	-28+020
10.300	9.50	-28+040
10.299	9.56	-28+060
10.298	9.53	-28+080
10.297	9.57	-28+100
10.296	9.57	-28+120
10.295	9.56	-28+140
10.294	9.55	-28+160
10.293	9.61	-28+180
10.293	9.60	-28+200
10.292	9.59	-28+220
10.291	9.66	-28+240
10.290	9.71	-28+260
10.289	9.77	-28+280
10.288	9.76	-28+300
10.287	9.90	-28+320
10.286	9.98	-28+340
10.285	9.99	-28+360
10.284	10.05	-28+380
10.283	9.87	-28+400
10.282	9.81	-28+420
10.282	9.89	-28+440
10.281	9.65	-28+460
10.280	9.57	-28+480
10.279	9.57	-28+500
10.278	9.51	-28+520
10.277	9.45	-28+540
10.276	9.45	-28+560
10.275	9.42	-28+580
10.274	9.43	-28+600
10.273	9.41	-28+620
10.272	9.48	-28+640
10.271	9.51	-28+660
10.271	9.48	-28+680
10.270	9.51	-28+700

HORIZONTAL CURVATURE	SUPER-ELEVATION
$R_c = \infty$ $L = 678.035$	NC
POI $179^{\circ}57'26''$	NC
$R_c = \infty$ $L = 897.870$	NC

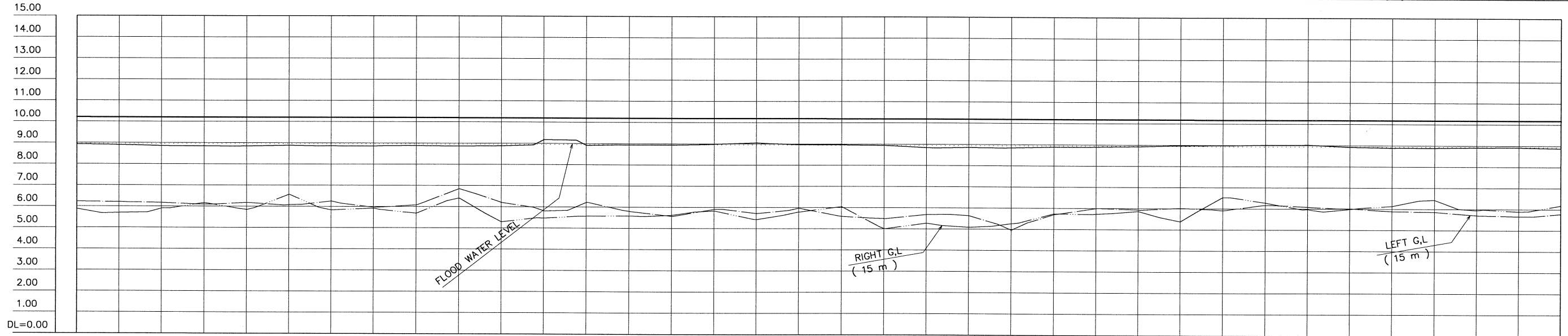
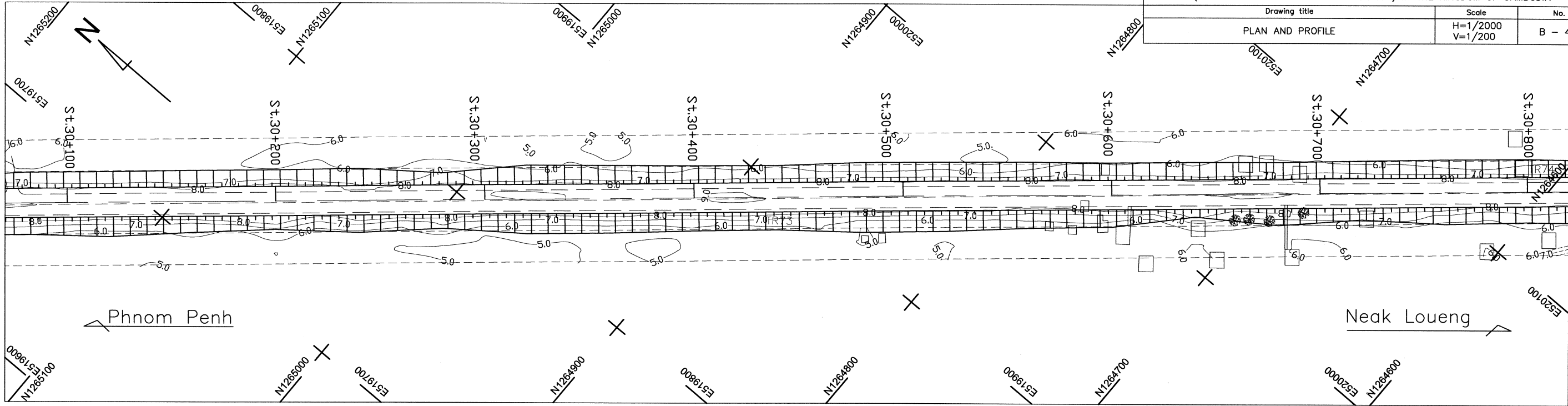
CROSS SECTION TYPE
TYPE-E
TYPE-E



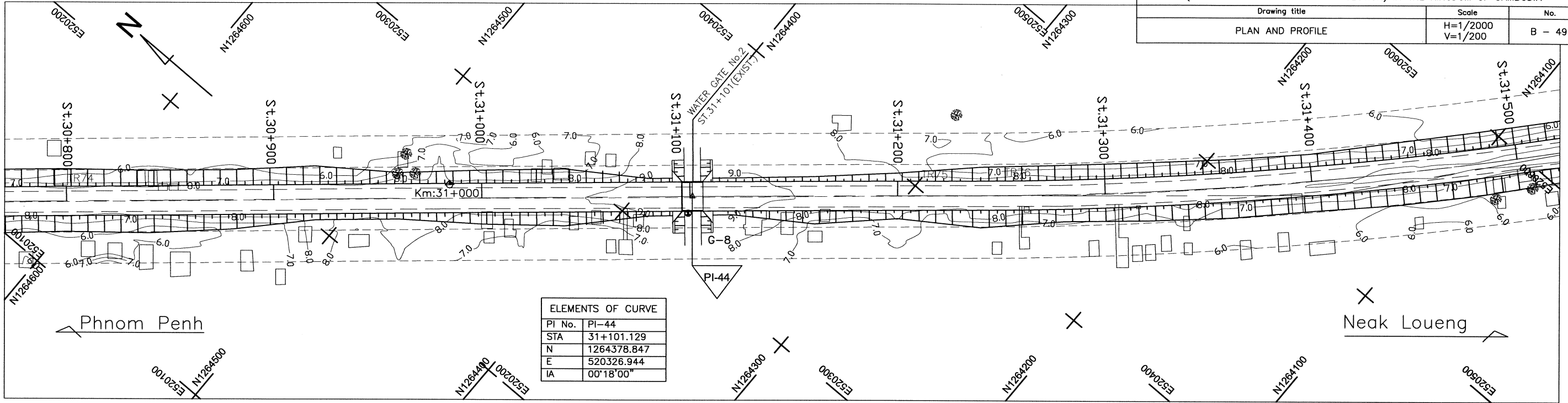
VERTICAL ALIGNMENT	$i = -0.005\%$ $L = 830.00$																																			
PAVEMENT HEIGHT	-10.270	-10.269	-10.268	-10.267	-10.266	-10.265	-10.264	-10.263	-10.262	-10.261	-10.261	-10.260	-10.259	-10.258	-10.257	-10.256	-10.255	-10.254	-10.253	-10.252	-10.251	-10.250	-10.250	-10.249	-10.248	-10.247	-10.246	-10.245	-10.244	-10.257	-10.270	-10.283	-10.297	-10.310	-10.309	-10.308
GROUND HEIGHT	9.51	9.51	9.51	9.54	9.56	9.55	9.53	9.53	9.46	9.48	9.54	9.57	9.58	9.61	9.62	9.62	9.66	9.65	9.60	9.58	9.57	9.53	9.63	9.61	9.62	9.55	9.54	9.53	9.62	9.69	9.63	9.65	9.63	9.66	9.55	9.65
STATION	-28+700	-28+720	-28+740	-28+760	-28+780	-28+800	-28+820	-28+840	-28+860	-28+880	-28+900	-28+920	-28+940	-28+960	-28+980	-29+000	-29+020	-29+040	-29+060	-29+080	-29+100	-29+120	-29+140	-29+160	-29+180	-29+200	-29+220	-29+240	-29+260	-29+280	-29+300	-29+320	-29+340	-29+360	-29+380	-29+400
HORIZONTAL CURVATURE	$R_c = \infty$ $L = 897.870$																																			
SUPER-ELEVATION	NC																																			
CROSS SECTION TYPE	TYPE-E																																			



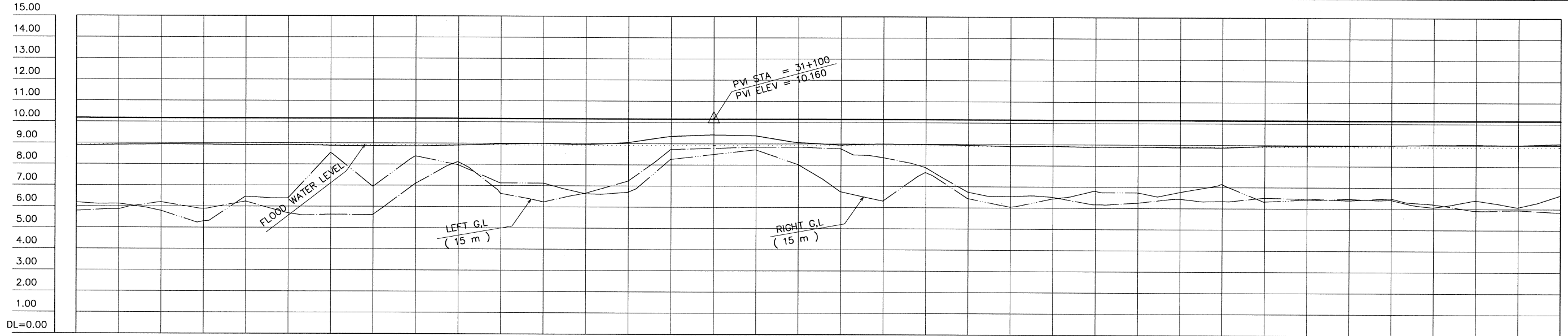
VERTICAL ALIGNMENT	$I = -0.005\%$ $L = 380.00$		$I = -0.075\%$ $L = 100.00$	$I = -0.005\%$ $L = 1260.00$																																		
PAVEMENT HEIGHT	10.308	10.307	10.306	10.305	10.304	10.303	10.302	10.302	10.301	10.300	10.299	10.298	10.297	10.296	10.295	10.294	10.293	10.292	10.277	10.262	10.248	10.233	10.218	10.217	10.216	10.215	10.214	10.213	10.212	10.211	10.210	10.209	10.208	10.208	10.207	10.206		
GROUND HEIGHT	9.65	9.63	9.63	9.65	9.68	9.67	9.71	9.66	9.64	9.61	9.65	9.59	9.53	9.58	9.60	9.62	9.64	9.54	9.49	9.39	9.30	9.31	9.25	9.27	9.25	9.23	9.24	9.23	9.26	9.22	9.15	9.12	9.03	8.98	9.00	8.92		
STATION	-29+400	-29+420	-29+440	-29+460	-29+480	-29+500	-29+520	-29+540	-29+560	-29+580	-29+600	-29+620	-29+640	-29+660	-29+680	-29+700	-29+720	-29+740	-29+760	-29+780	-29+800	-29+820	-29+840	-29+860	-29+880	-29+900	-29+920	-29+940	-29+960	-29+980	-30+000	-30+020	-30+040	-30+060	-30+080	-30+100		
HORIZONTAL CURVATURE	$R_c = 1170$ $L_c = 429.253$																		$R_c = \infty$ $L = 1242.224$																			
SUPER-ELEVATION	$e = 3\%$																		NC																			
CROSS SECTION TYPE	TYPE-E																																					



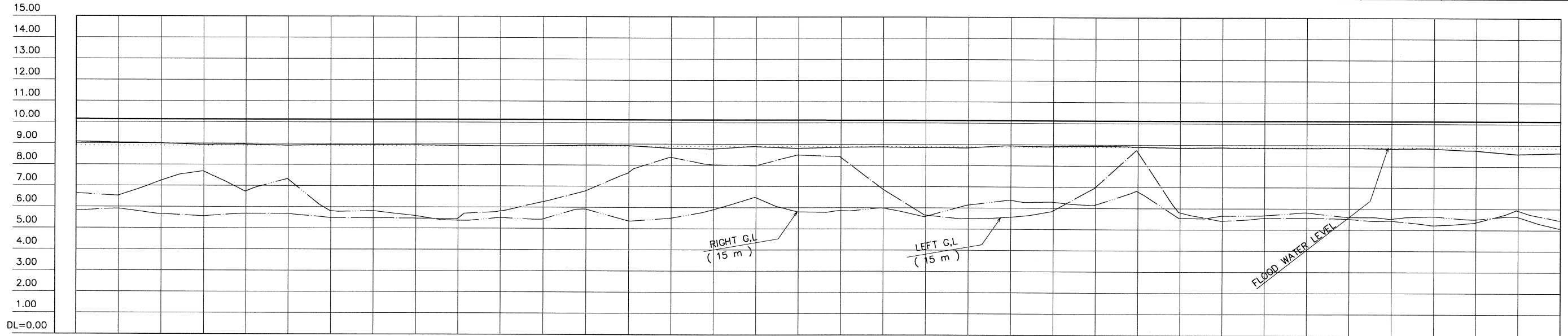
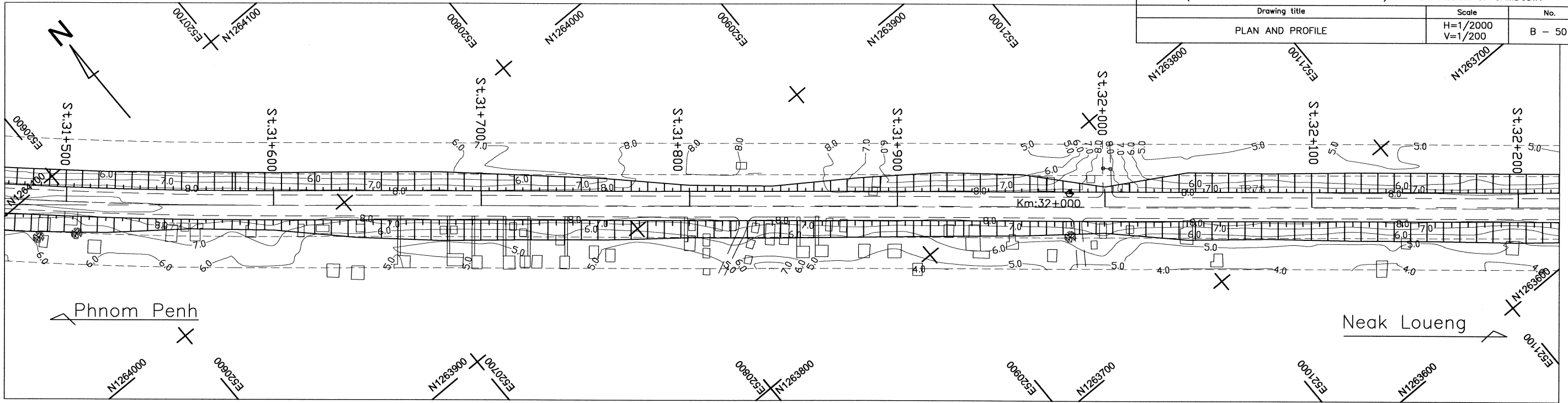
VERTICAL ALIGNMENT	$i = -0.005\%$ $L = 1260.00$																																			
PAVEMENT HEIGHT	-10.206	-10.205	-10.204	-10.203	-10.202	-10.201	-10.200	-10.199	-10.198	-10.197	-10.197	-10.196	-10.195	-10.194	-10.193	-10.192	-10.191	-10.190	-10.189	-10.188	-10.187	-10.187	-10.186	-10.185	-10.184	-10.183	-10.182	-10.181	-10.180	-10.179	-10.178	-10.177	-10.176	-10.176	-10.175	-10.174
GROUND HEIGHT	8.92	8.90	8.86	8.85	8.85	8.88	8.86	8.85	8.87	8.86	8.87	9.17	8.92	8.94	8.94	8.98	9.04	8.97	8.96	8.94	8.84	8.85	8.85	8.89	8.89	8.92	8.96	8.98	9.01	9.02	8.92	8.89	8.89	8.91	8.92	8.88
STATION	-30+100	-30+120	-30+140	-30+160	-30+180	-30+200	-30+220	-30+240	-30+260	-30+280	-30+300	-30+320	-30+340	-30+360	-30+380	-30+400	-30+420	-30+440	-30+460	-30+480	-30+500	-30+520	-30+540	-30+560	-30+580	-30+600	-30+620	-30+640	-30+660	-30+680	-30+700	-30+720	-30+740	-30+760	-30+780	-30+800
HORIZONTAL CURVATURE	$R_c = \infty$ $L = 1242.224$																																			
SUPER-ELEVATION	NC																																			
CROSS SECTION TYPE	TYPE-E																																			



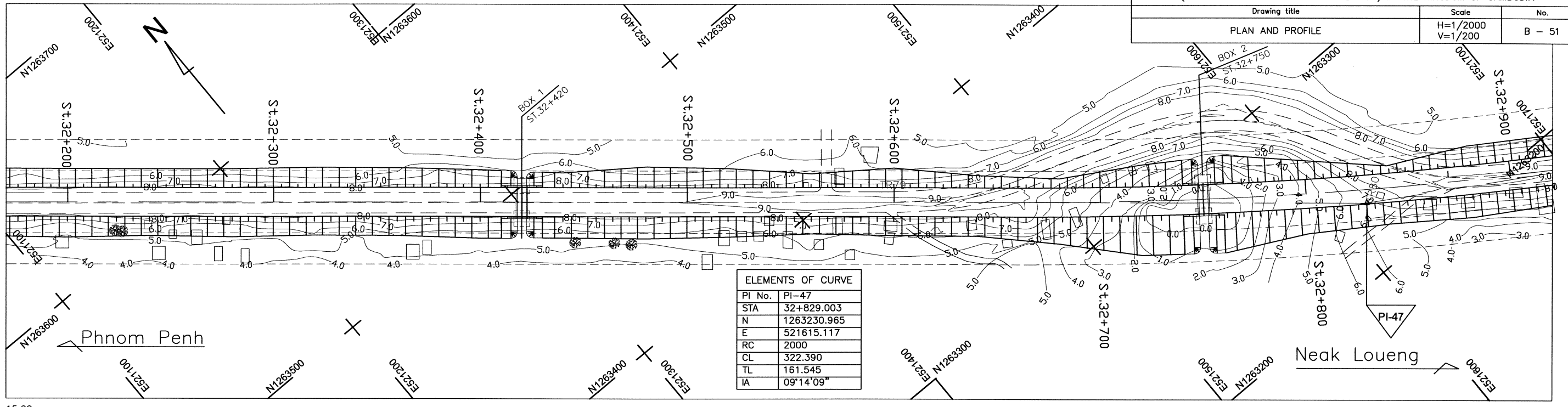
ELEMENTS OF CURVE	
PI No.	PI-44
STA	31+101.129
N	1264378.847
E	520326.944
IA	00°18'00"



VERTICAL ALIGNMENT	GRADES	
	$i = -0.005\%$ $L = 1260.00$	$i = -0.004\%$ $L = 1155.00$
PAVEMENT HEIGHT	10.174	10.146
GROUND HEIGHT	8.88	9.07
STATION	-30+800	-31+500
HORIZONTAL CURVATURE	$R_c = \infty$ $L = 1342.224$	$R_c = 2040$ $L_c = 347.671$
SUPER-ELEVATION	NC	RC
CROSS SECTION TYPE	TYPE-E	TYPE-E

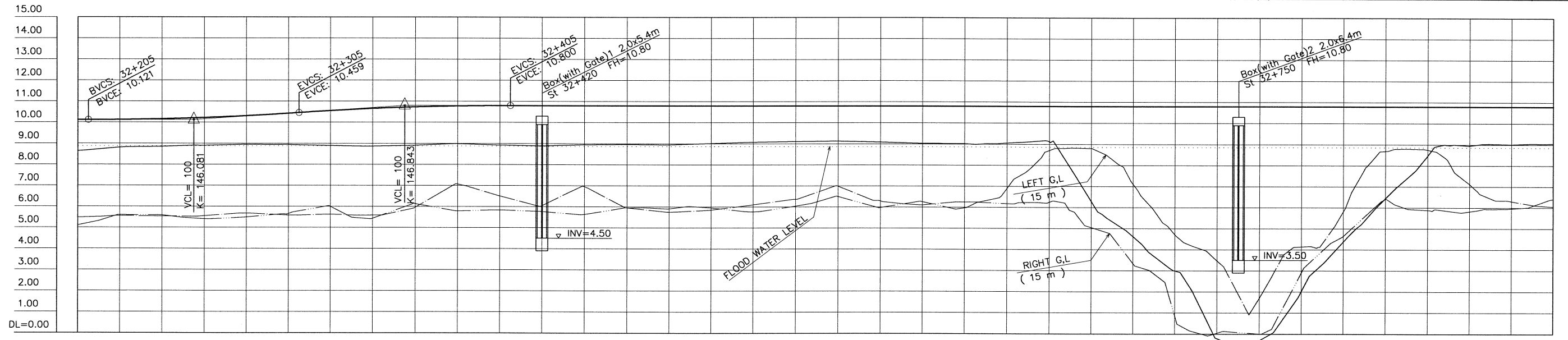


VERTICAL ALIGNMENT																																						
PAVEMENT HEIGHT	10.146	10.145	10.144	10.144	10.143	10.142	10.142	10.141	10.140	10.139	10.139	10.138	10.137	10.137	10.136	10.135	10.134	10.134	10.133	10.132	10.132	10.131	10.130	10.129	10.129	10.128	10.127	10.127	10.126	10.125	10.125	10.124	10.123	10.122	10.122	10.121		
GROUND HEIGHT	9.07	9.04	9.01	8.94	8.95	8.90	8.95	8.95	8.93	8.91	8.89	8.90	8.93	8.92	8.80	8.77	8.88	8.80	8.86	8.87	8.85	8.84	8.93	8.91	8.94	8.89	8.86	8.87	8.85	8.86	8.86	8.86	8.84	8.84	8.76	8.59	8.64	
STATION	-31+500	-31+520	-31+540	-31+560	-31+580	-31+600	-31+620	-31+640	-31+660	-31+680	-31+700	-31+720	-31+740	-31+760	-31+780	-31+800	-31+820	-31+840	-31+860	-31+880	-31+900	-31+920	-31+940	-31+960	-31+980	-32+000	-32+020	-32+040	-32+060	-32+080	-32+100	-32+120	-32+140	-32+160	-32+180	-32+200		
HORIZONTAL CURVATURE	Rc=2040 Lc=347.671										EC										Rc=∞ L=1086.232																	
SUPER-ELEVATION	RC										EC										NC																	
CROSS SECTION TYPE	TYPE-E																																					

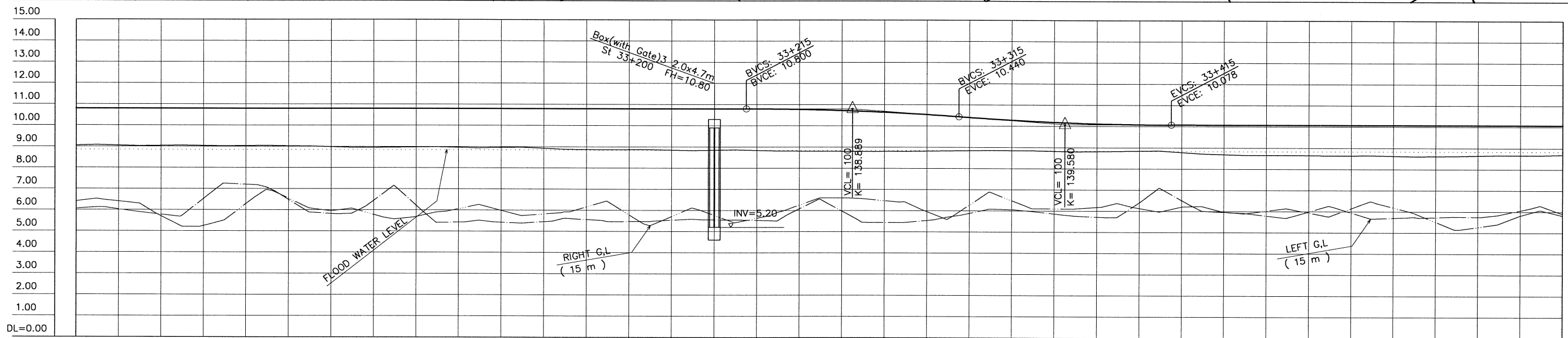
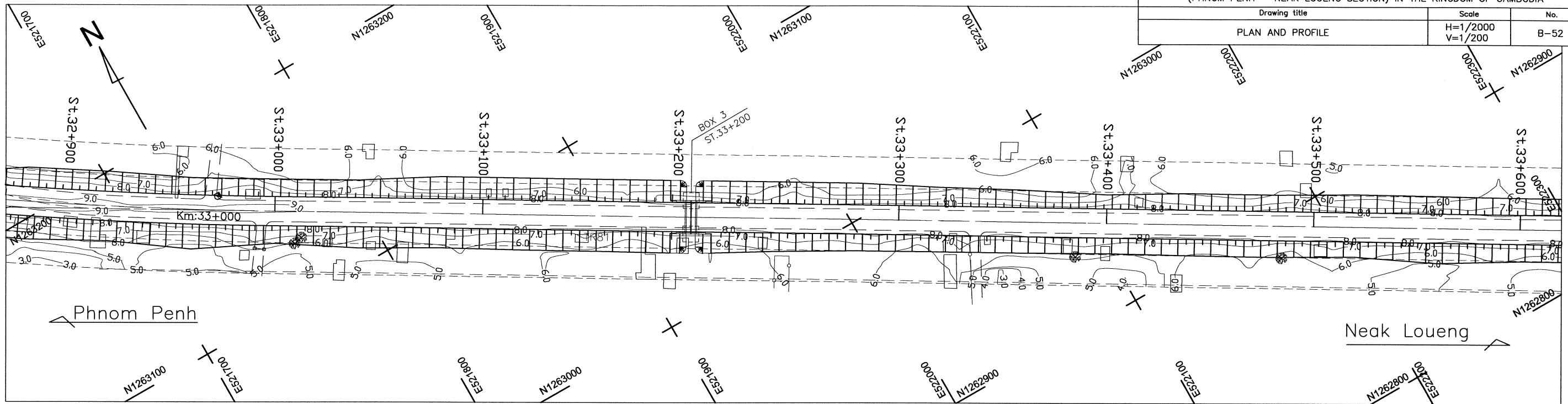


ELEMENTS OF CURVE

PI No.	PI-47
STA	32+829.003
N	1263230.965
E	521615.117
RC	2000
CL	322.390
TL	161.545
IA	09°14'09"



VERTICAL ALIGNMENT	PAVEMENT HEIGHT	GROUND HEIGHT	STATION	HORIZONTAL CURVATURE	SUPER-ELEVATION	CROSS SECTION TYPE
$I = -0.004\%$ $L = 1155.00$	10.121	8.64	-32+200	$R_c = \infty$ $L = 1086.232$	NC	TYPE-E
	10.128	8.81	-32+220			
$I = 0.681\%$ $L = 100.00$	10.161	8.85	-32+240	$R_c = 2000$ $L_c = 322.390$	RC	TYPE-E
	10.222	8.90	-32+260			
$I = -0.000\%$ $L = 910.00$	10.311	8.94	-32+280	BC		
	10.426	8.94	-32+300			
	10.554	8.90	-32+320			
	10.656	8.87	-32+340			
	10.731	8.91	-32+360			
	10.779	8.99	-32+380			
	10.799	8.92	-32+400			
	10.800	8.88	-32+420			
	10.800	8.95	-32+440			
	10.800	8.96	-32+460			
	10.800	8.95	-32+480			
	10.800	9.01	-32+500			
	10.800	9.07	-32+520			
	10.800	9.11	-32+540			
	10.800	9.13	-32+560			
	10.800	9.09	-32+580			
	10.800	9.03	-32+600			
	10.800	9.01	-32+620			
	10.800	9.06	-32+640			
	10.800	9.12	-32+660			
	10.800	6.29	-32+680			
	10.800	4.62	-32+700			
	10.800	2.99	-32+720			
	10.800	-0.22	-32+740			
	10.800	-0.31	-32+760			
	10.800	2.02	-32+780			
	10.800	4.38	-32+800			
	10.800	6.45	-32+820			
	10.800	8.43	-32+840			
	10.800	8.95	-32+860			
	10.800	9.02	-32+880			
	10.800	9.05	-32+900			



VERTICAL ALIGNMENT	I=-0.000% L=910.00		(10.800)	I=-0.720% L=100.00		(10.080)	I=-0.004% L=935.00		
PAVEMENT HEIGHT	10.800	10.800	10.800	10.800	10.800	10.800	10.800	10.800	
GROUND HEIGHT	9.05	9.03	9.04	9.03	9.03	9.02	8.98	8.96	
STATION	32+900	32+920	32+940	32+960	32+980	33+000	33+020	33+040	
HORIZONTAL CURVATURE	Rc=2000 Lc=322.390			Rc=∞ L=1389.447					
SUPER-ELEVATION	RC		NC						
CROSS SECTION TYPE	TYPE-E						TYPE-E		