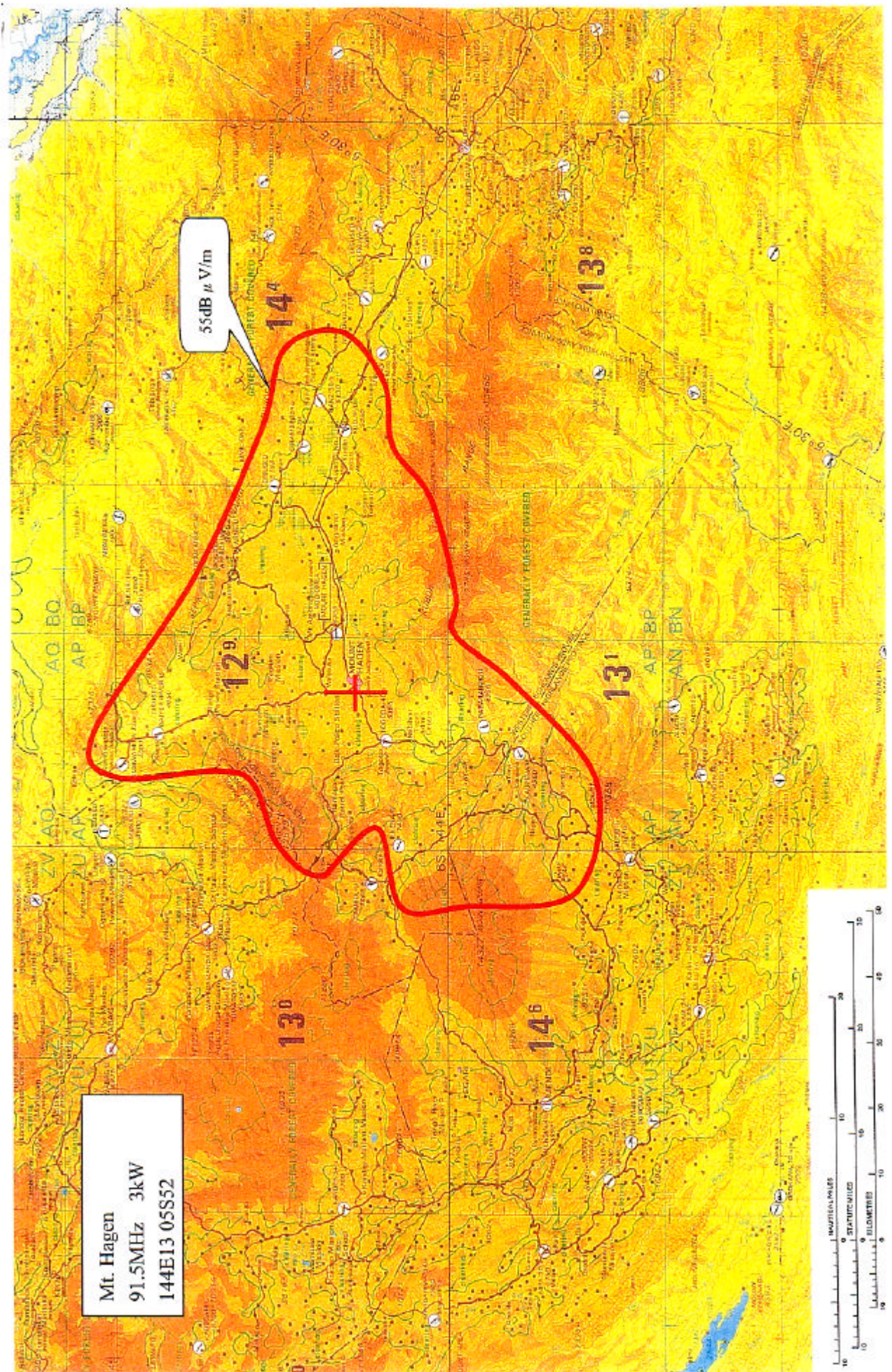
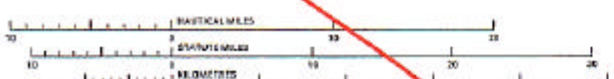
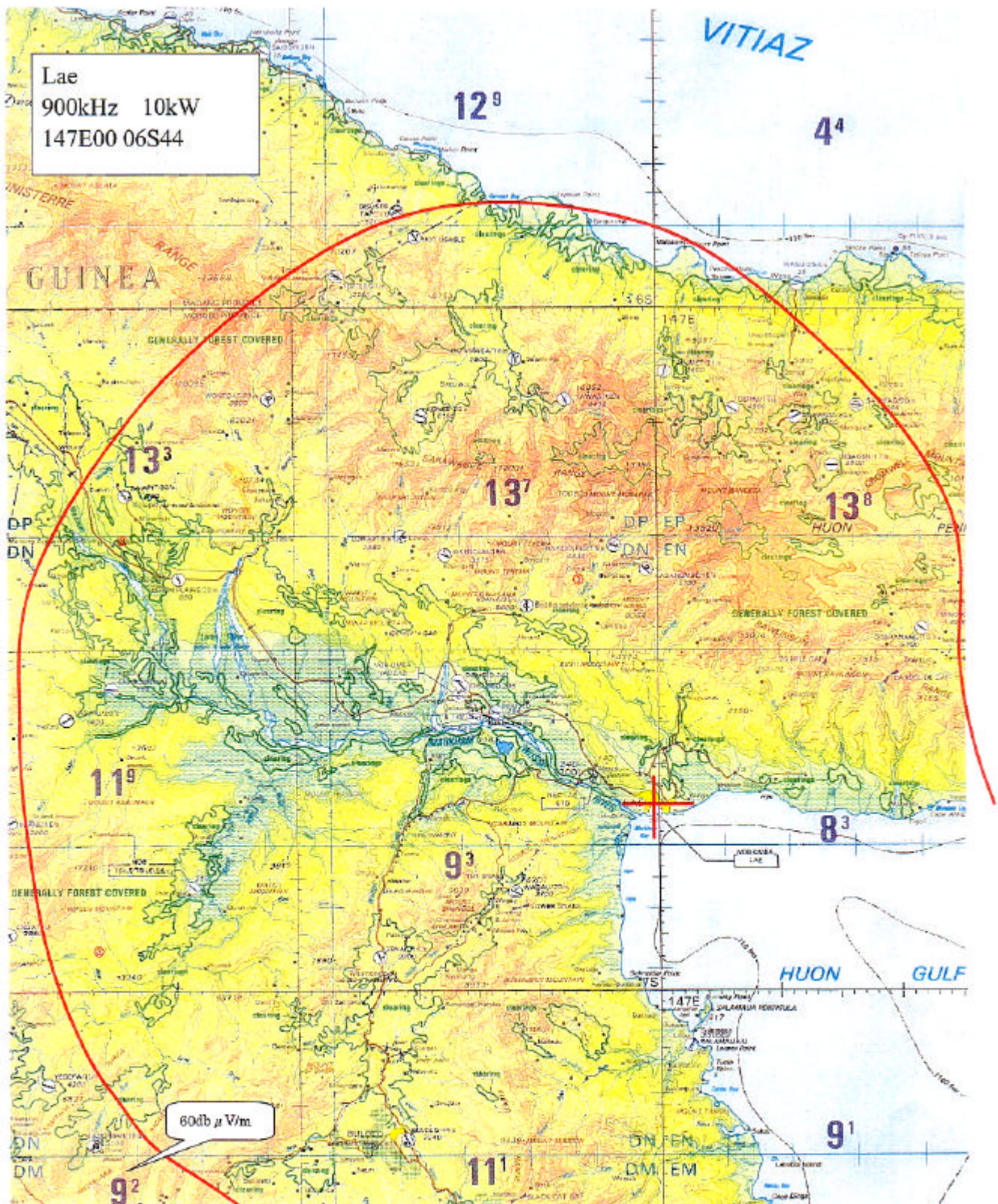


6. Estimated Service Area Map

- Mt. Hagen (West Highlands Province)
- Lae (Morobe Province)
- Kimbe (West New-Britain Province)
- Vanimo (West-Sepik Province)
- Goroka (East Highlands Province)





①Maeon

距離 km	地質	σ (S/m)	ϵ
10	Land	3×10^3	15
20	Land	3×10^3	15
30	Dry	3×10^4	3
40	V Dry	10^4	3
50	V Dry	10^4	3
60	V Dry	10^4	3
70	V Dry	10^4	3
80	V Dry	10^4	3
90	Dry	3×10^4	3
100	Dry	3×10^4	3

②Marangits

距離 km	地質	σ (S/m)	ϵ
10	W Land	10^2	30
20	W Land	10^2	30
30	W Land	10^2	30
40	W Land	10^2	30
50	W Land	10^2	30
60	W Land	10^2	30
70	Land	3×10^3	15
80	Land	3×10^3	15
90	Land	3×10^3	15
100	Land	3×10^3	15

③Tobismantu

距離 km	地質	σ (S/m)	ϵ
10	W Land	10^2	30
20	Land	3×10^3	15
30	W Land	10^2	30
40	W Land	10^2	30
50	Land	3×10^3	15
60	W Land	10^2	30
70	Land	3×10^3	15
80	Land	3×10^3	15
90	Land	3×10^3	15
100	Dry	3×10^4	3

④Ovoro ovoro

距離 km	地質	σ (S/m)	ϵ
10	Sea	6	70
20	Sea	6	70
30	Sea	6	70
40	Dry	3×10^4	3
50	Dry	3×10^4	3
60	Dry	3×10^4	3
70	Dry	3×10^4	3
80	Dry	3×10^4	3
100			