

GOVERNMENT OF THE REPUBLIC OF GHANA

MINISTRY OF ROAD AND TRANSPORT GHANA HIGHWAY AUTHORITY

KATAHIRA & ENGINEERS INTERNATIONAL

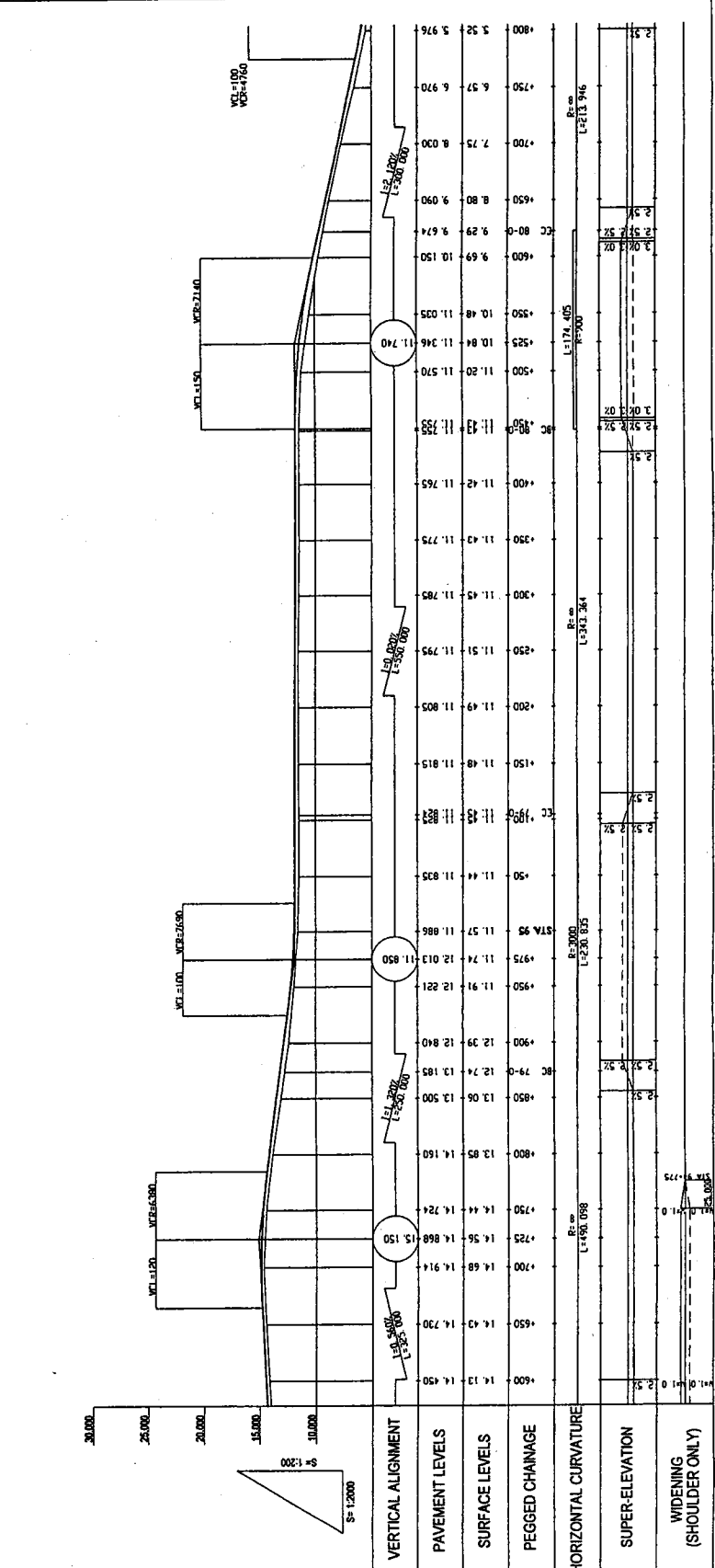
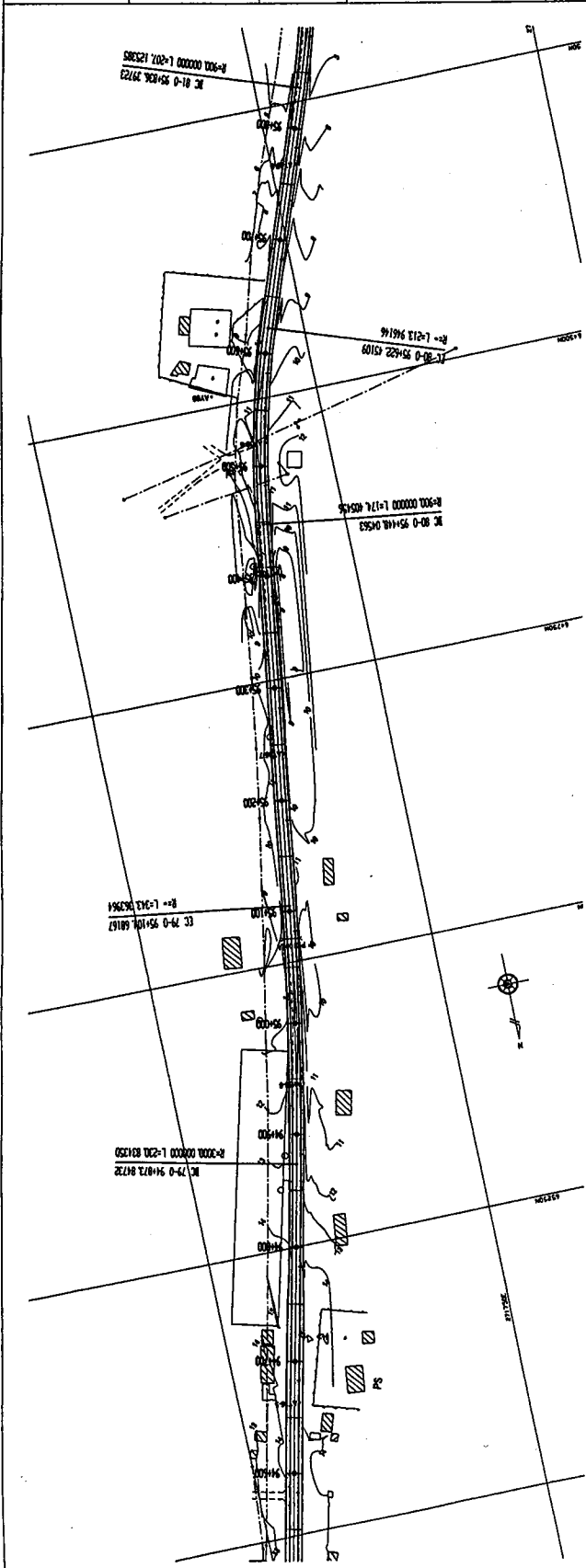
NOTES:

PROJECT: THE PROJECT FOR REHABILITATION OF TRUNK ROAD

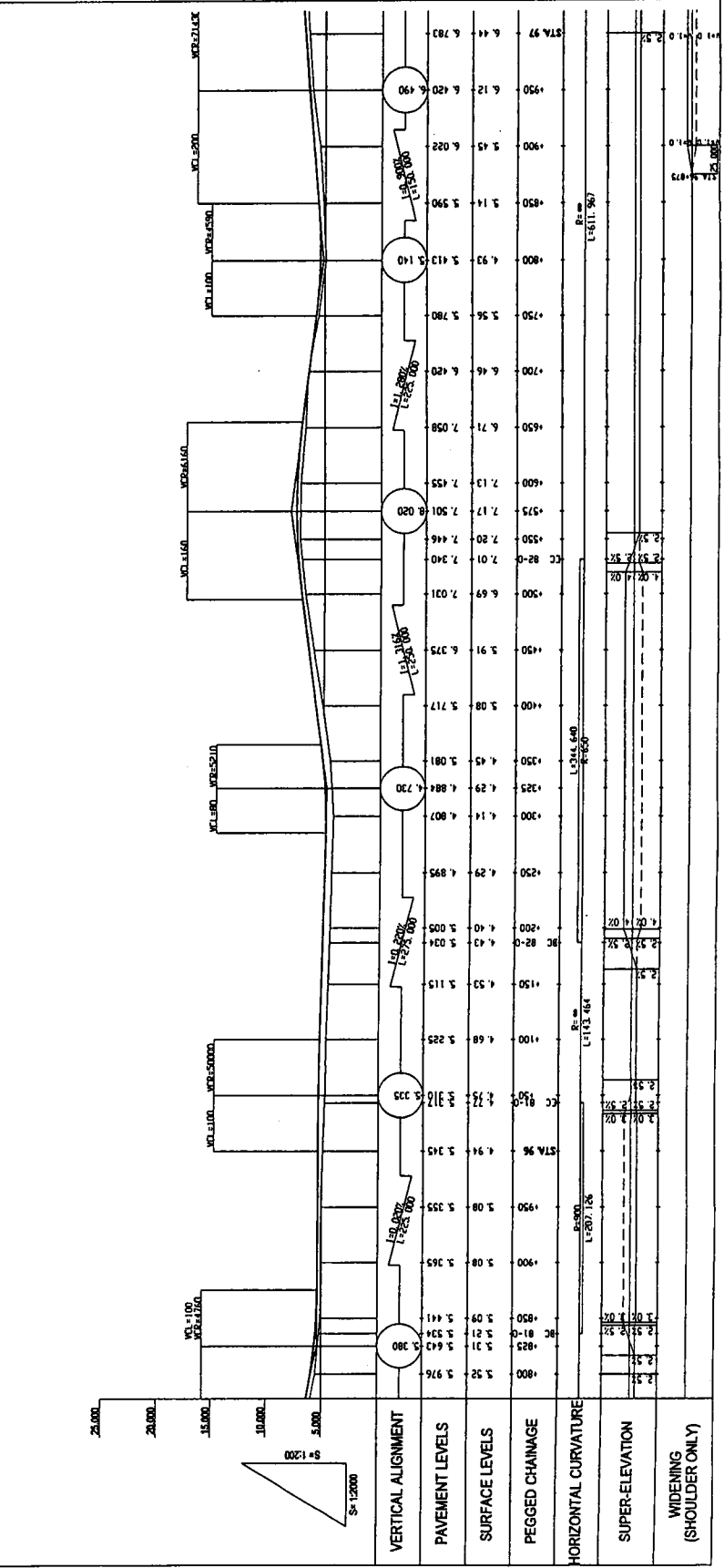
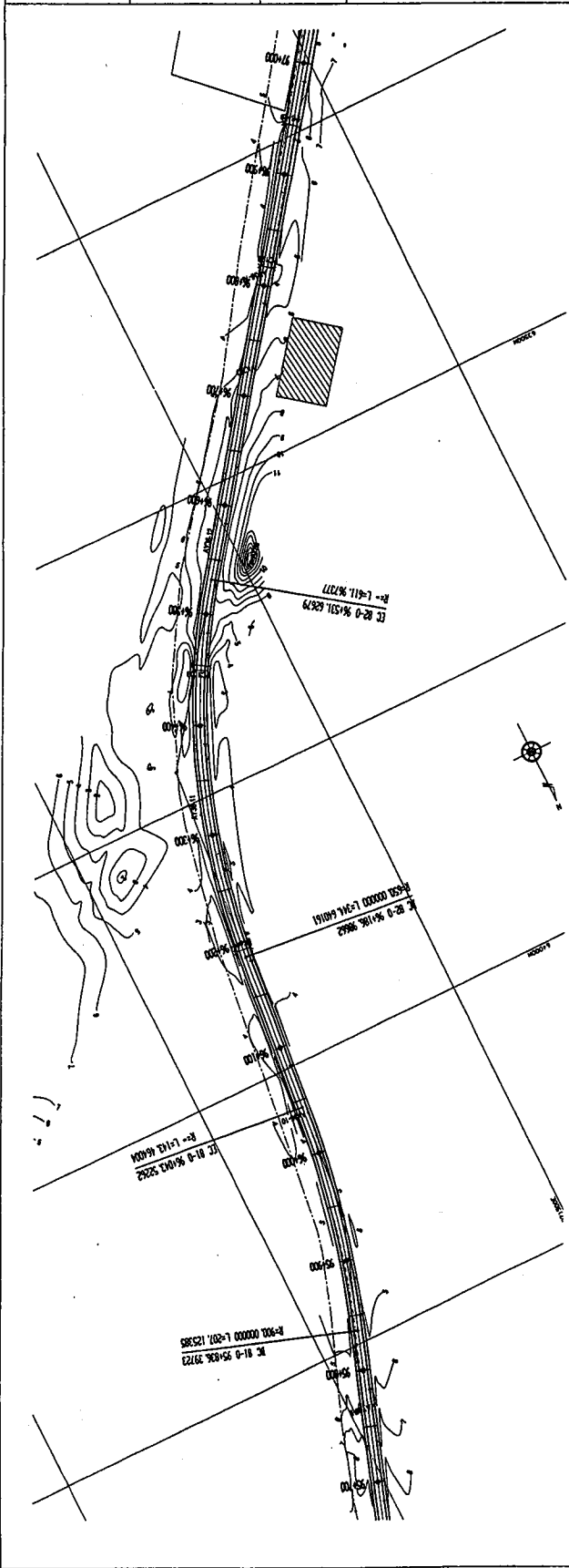
TITLE: PLAN AND PROFILE (66/83)

SCALE: V = 12000 H = 1:2000

DRAWING No: PL-66



GOVERNMENT OF THE REPUBLIC OF GHANA
 MINISTRY OF ROAD AND TRANSPORT GHANA HIGHWAY AUTHORITY
 KATAHIRA & ENGINEERS INTERNATIONAL
 NOTES:
 PROJECT: THE PROJECT FOR REHABILITATION OF TRUNK ROAD
 TITLE: PLAN AND PROFILE (67/83)
 SCALE: V = 1:200 H = 1:2000
 DRAWING No: PL-67



GOVERNMENT OF THE REPUBLIC OF GHANA

MINISTRY OF ROAD AND TRANSPORT GHANA HIGHWAY AUTHORITY

KATAHIRA & ENGINEERS INTERNATIONAL

NOTES:

PROJECT:

THE PROJECT FOR REHABILITATION OF TRUNK ROAD

TITLE:

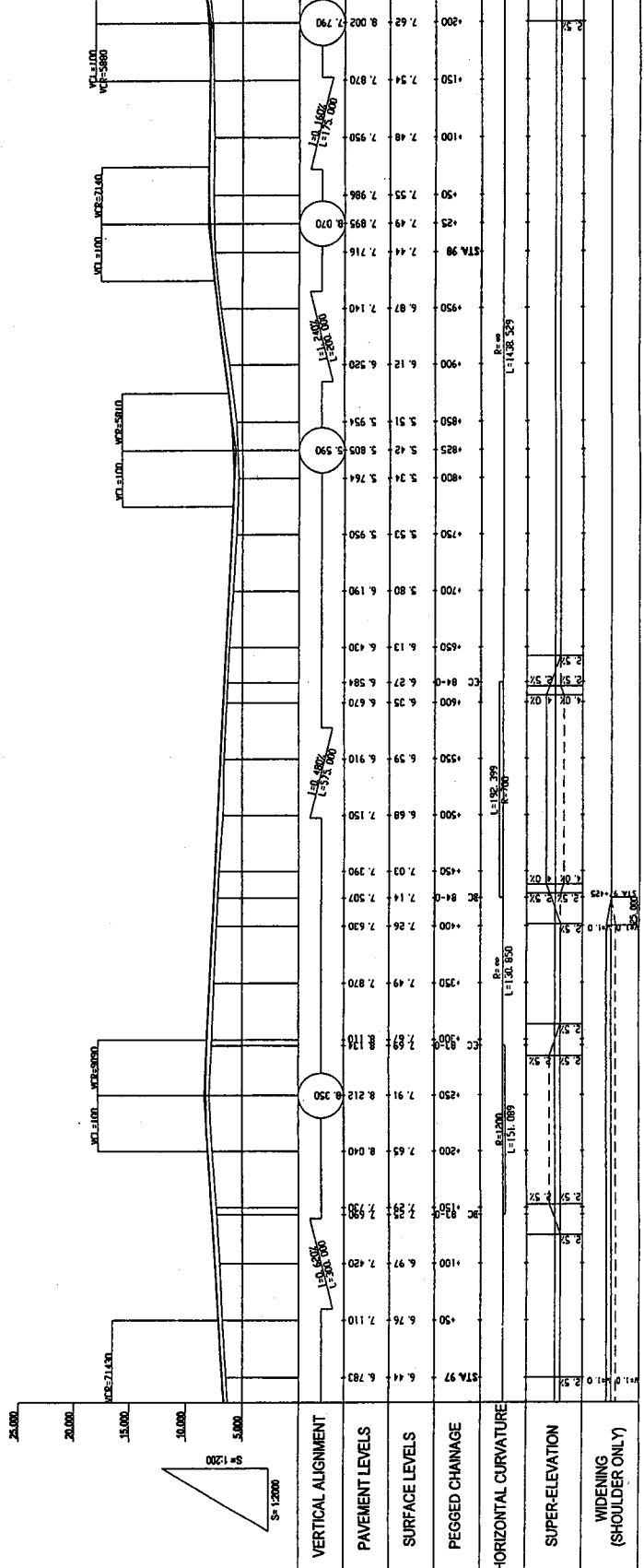
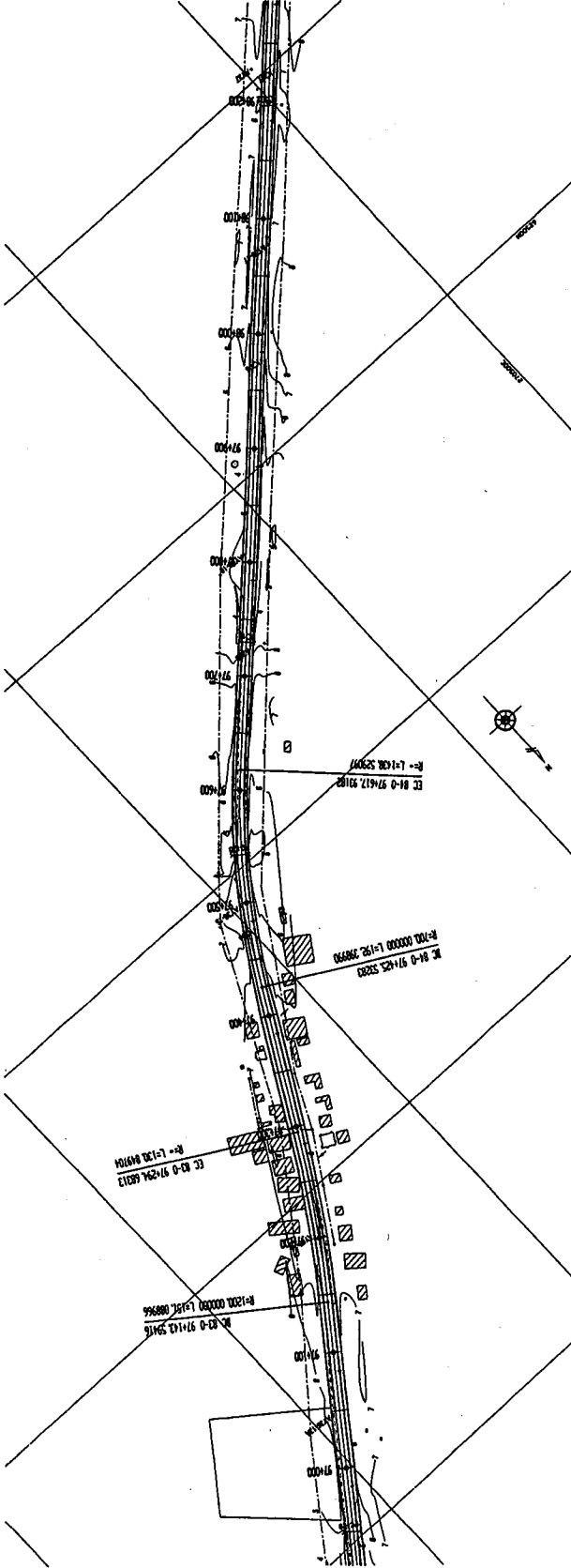
PLAN AND PROFILE (68/83)

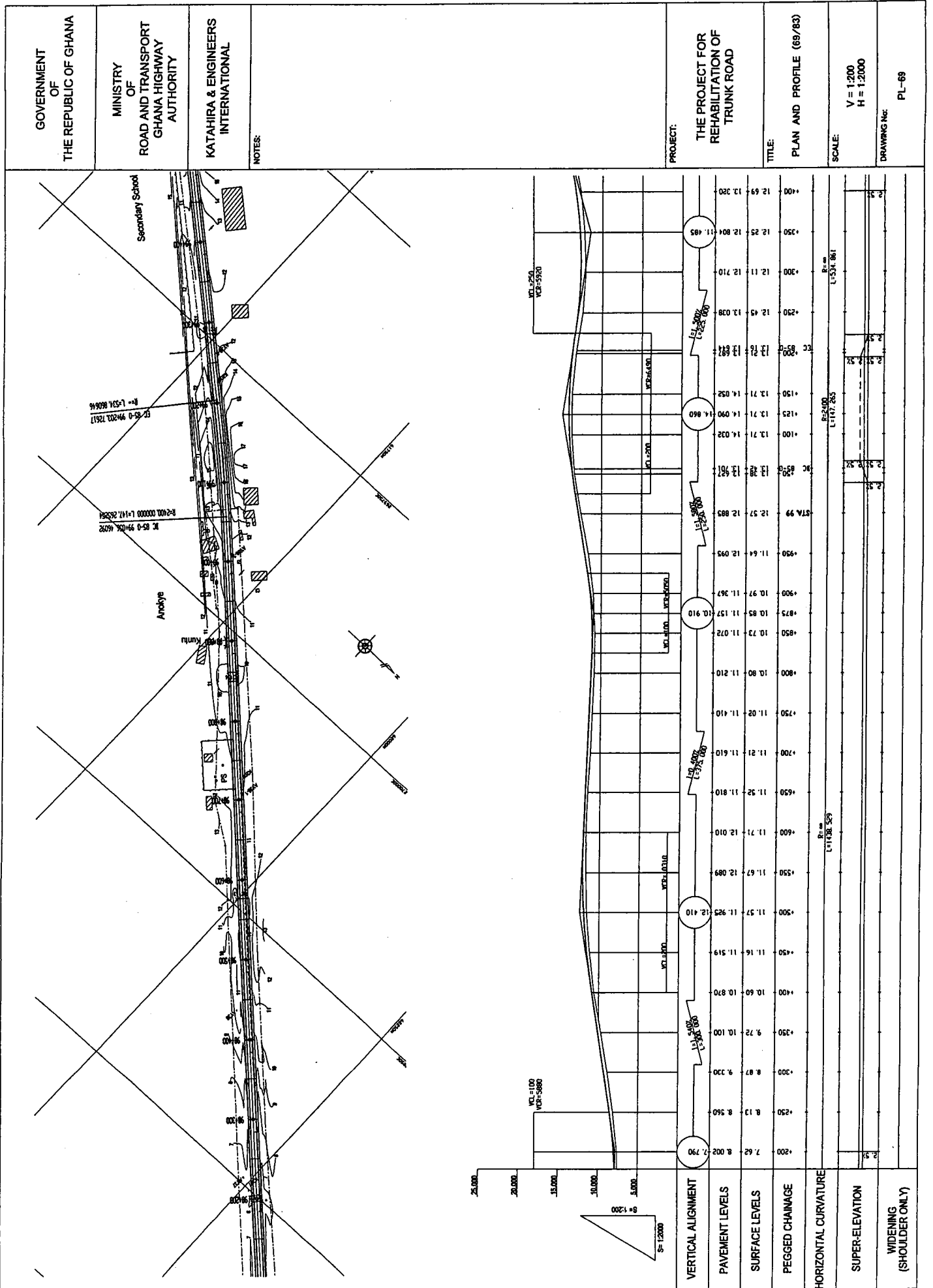
SCALE:

V = 1:200
H = 1:2000

DRAWING NO:

PL-68





GOVERNMENT OF THE REPUBLIC OF GHANA

MINISTRY OF ROAD AND TRANSPORT GHANA HIGHWAY AUTHORITY

KATAHIRA & ENGINEERS INTERNATIONAL

NOTES:

PROJECT:

THE PROJECT FOR REHABILITATION OF TRUNK ROAD

TITLE:

PLAN AND PROFILE (69/83)

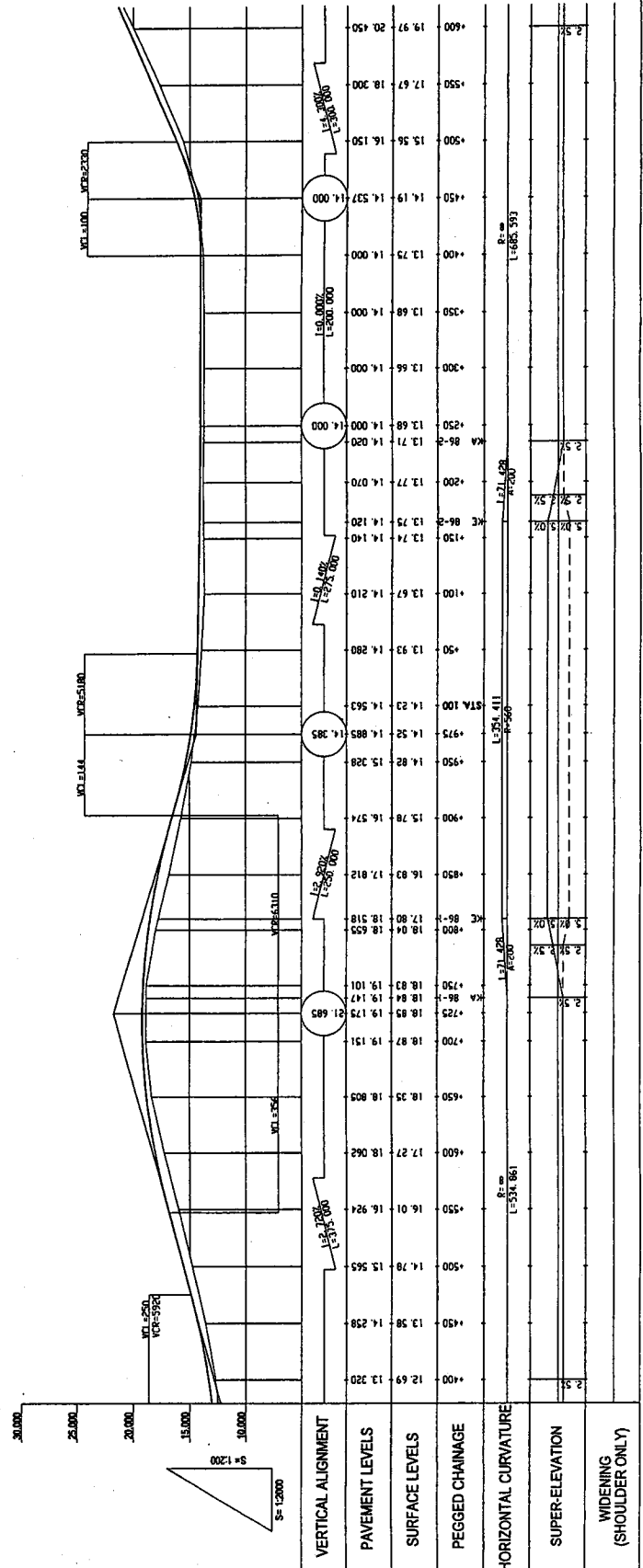
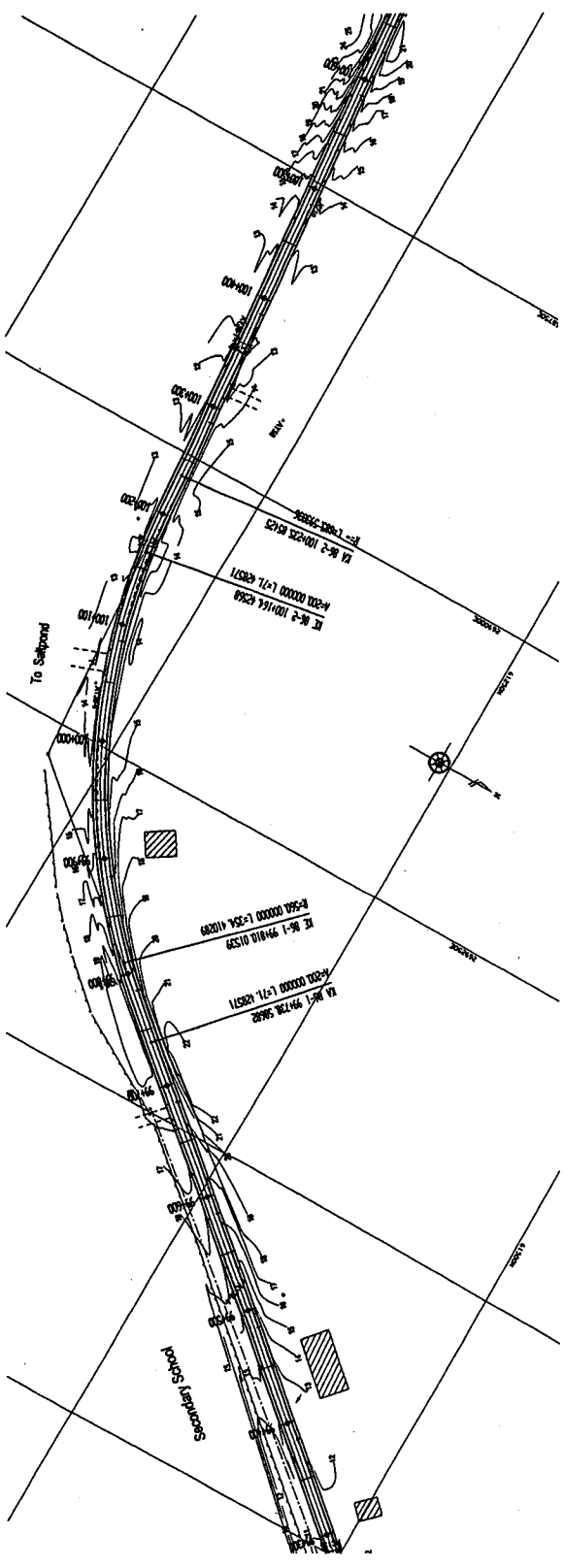
SCALE:

V = 1:200
H = 1:2000

DRAWING No:

PL-69

GOVERNMENT OF THE REPUBLIC OF GHANA	MINISTRY OF ROAD AND TRANSPORT GHANA HIGHWAY AUTHORITY	KATAHIRA & ENGINEERS INTERNATIONAL	NOTES:	PROJECT: THE PROJECT FOR REHABILITATION OF TRUNK ROAD	TITLE: PLAN AND PROFILE (70/83)	SCALE: V = 1:200 H = 1:2000	DRAWING No: PL-70
-------------------------------------	--	------------------------------------	--------	---	---------------------------------	-----------------------------	-------------------



GOVERNMENT OF THE REPUBLIC OF GHANA

MINISTRY OF ROAD AND TRANSPORT GHANA HIGHWAY AUTHORITY

KATAHIRA & ENGINEERS INTERNATIONAL

NOTES:

PROJECT: THE PROJECT FOR REHABILITATION OF TRUNK ROAD

TITLE: PLAN AND PROFILE (7/1/83)

SCALE: V = 1:2000, H = 1:2000

DRAWING No: PL-71

VERTICAL ALIGNMENT

PAYMENT LEVELS	SURFACE LEVELS	PEGGED CHAINAGE
19.97	20.450	600
20.150	20.600	650
20.200	21.000	700
20.250	21.200	750
20.250	21.300	800
20.250	21.400	850
20.250	21.500	900
20.250	21.600	950
20.250	21.700	1000
20.250	21.800	1050
20.250	21.900	1100
20.250	22.000	1150
20.250	22.100	1200
20.250	22.200	1250
20.250	22.300	1300
20.250	22.400	1350
20.250	22.500	1400
20.250	22.600	1450
20.250	22.700	1500
20.250	22.800	1550
20.250	22.900	1600
20.250	23.000	1650
20.250	23.100	1700
20.250	23.200	1750
20.250	23.300	1800
20.250	23.400	1850
20.250	23.500	1900
20.250	23.600	1950
20.250	23.700	2000
20.250	23.800	2050
20.250	23.900	2100
20.250	24.000	2150
20.250	24.100	2200
20.250	24.200	2250
20.250	24.300	2300
20.250	24.400	2350
20.250	24.500	2400
20.250	24.600	2450
20.250	24.700	2500
20.250	24.800	2550
20.250	24.900	2600
20.250	25.000	2650
20.250	25.100	2700
20.250	25.200	2750
20.250	25.300	2800
20.250	25.400	2850
20.250	25.500	2900
20.250	25.600	2950
20.250	25.700	3000

HORIZONTAL ALIGNMENT

PLAN AND PROFILE (7/1/83)

SCALE: V = 1:2000, H = 1:2000

DRAWING No: PL-71

GOVERNMENT
OF
THE REPUBLIC OF GHANA

MINISTRY
OF
ROAD AND TRANSPORT
GHANA HIGHWAY
AUTHORITY

KATAHIRA & ENGINEERS
INTERNATIONAL

NOTES:

PROJECT:

THE PROJECT FOR
REHABILITATION OF
TRUNK ROAD

TITLE:

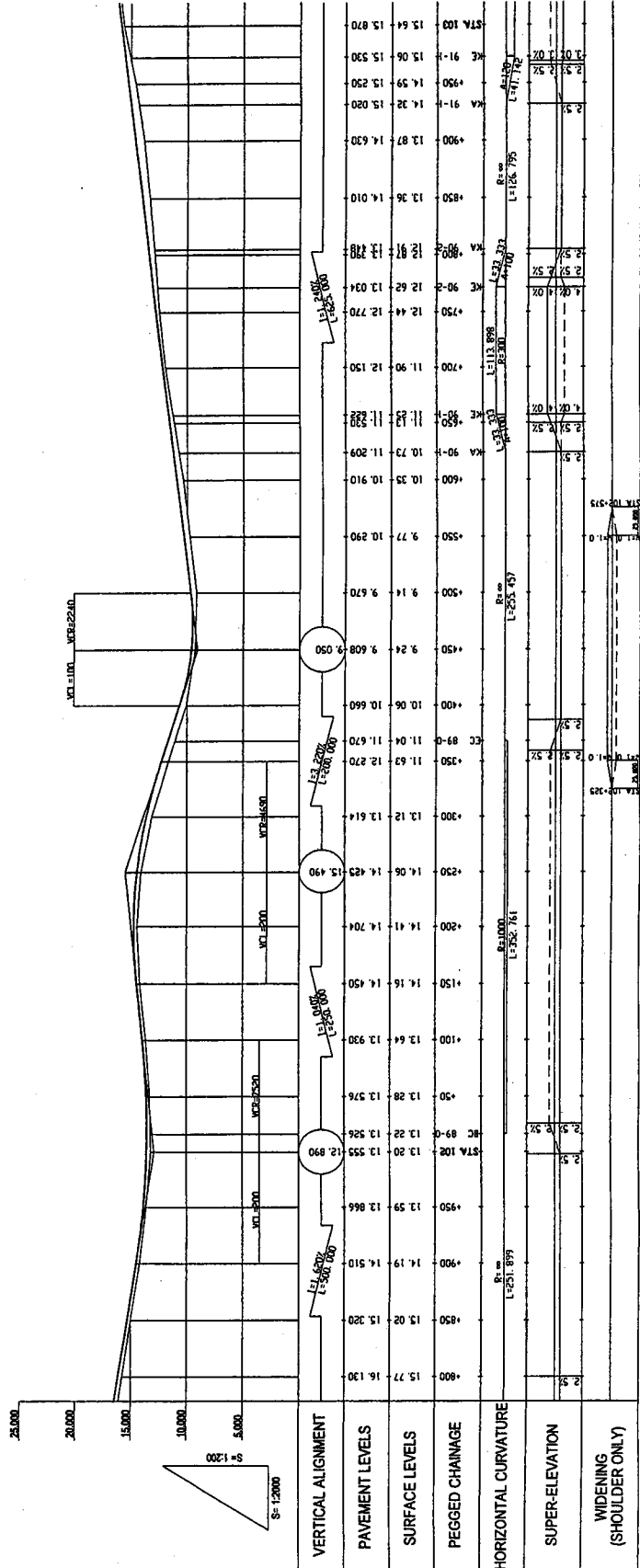
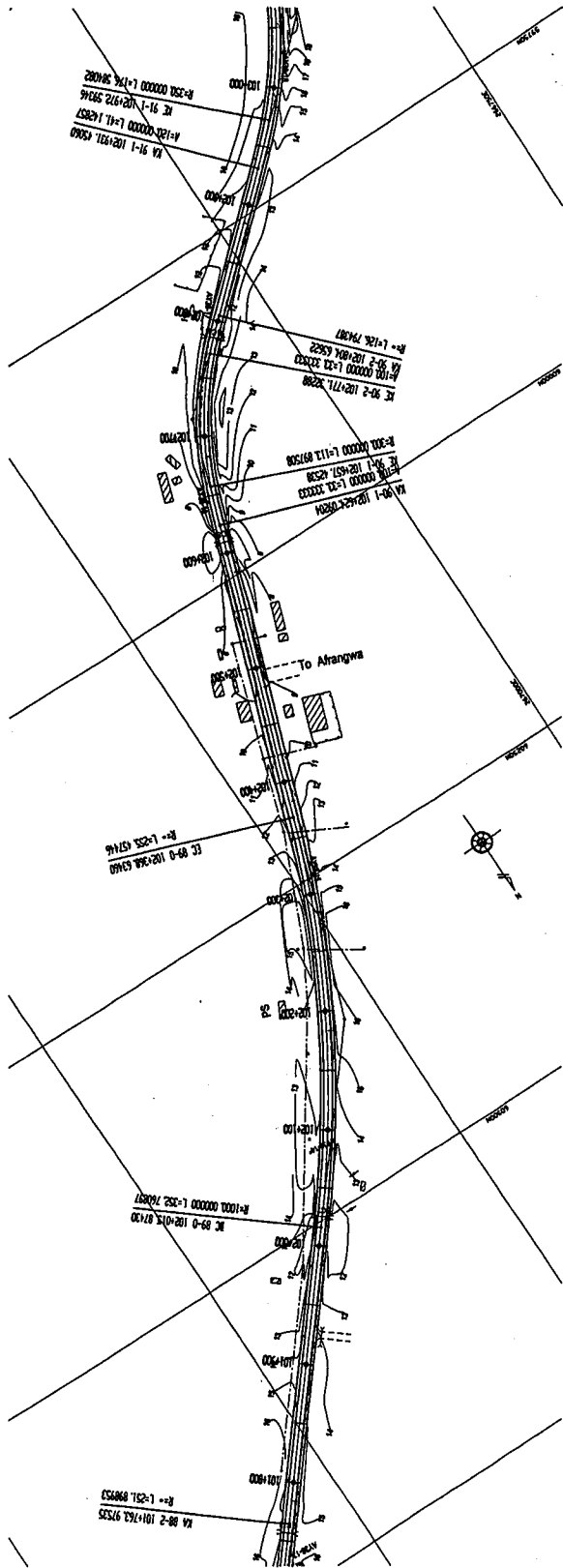
PLAN AND PROFILE (72/83)

SCALE:

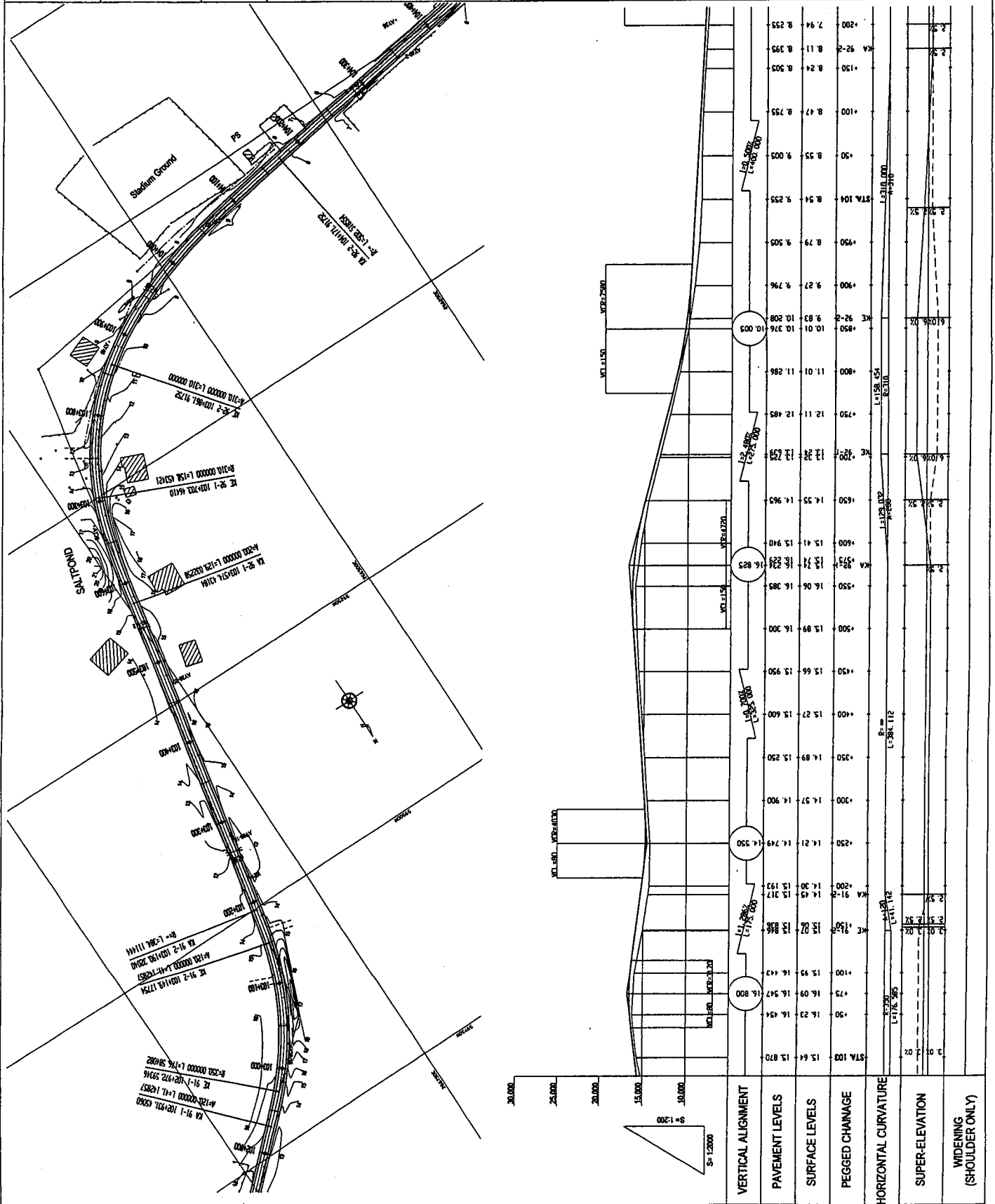
V = 1:200
H = 1:2000

DRAWING NO:

PL-72



GOVERNMENT OF THE REPUBLIC OF GHANA	MINISTRY OF ROAD AND TRANSPORT GHANA HIGHWAY AUTHORITY	KATAHIRA & ENGINEERS INTERNATIONAL	NOTES:
PROJECT: THE PROJECT FOR REHABILITATION OF TRUNK ROAD			
TITLE: PLAN AND PROFILE (73/83)			
SCALE: V = 1:200 H = 1:2000			
DRAWING No: PL-73			



GOVERNMENT OF THE REPUBLIC OF GHANA

MINISTRY OF ROAD AND TRANSPORT
GHANA HIGHWAY AUTHORITY

KATAHIRA & ENGINEERS INTERNATIONAL

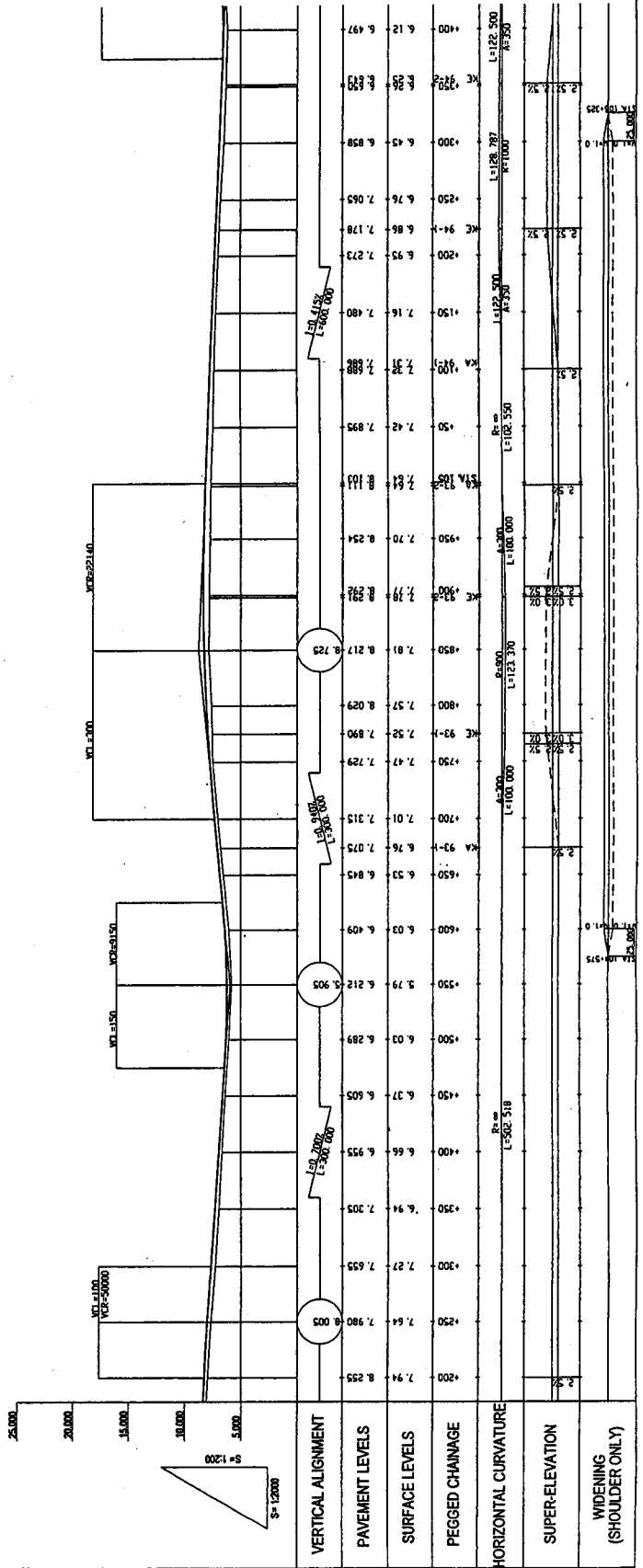
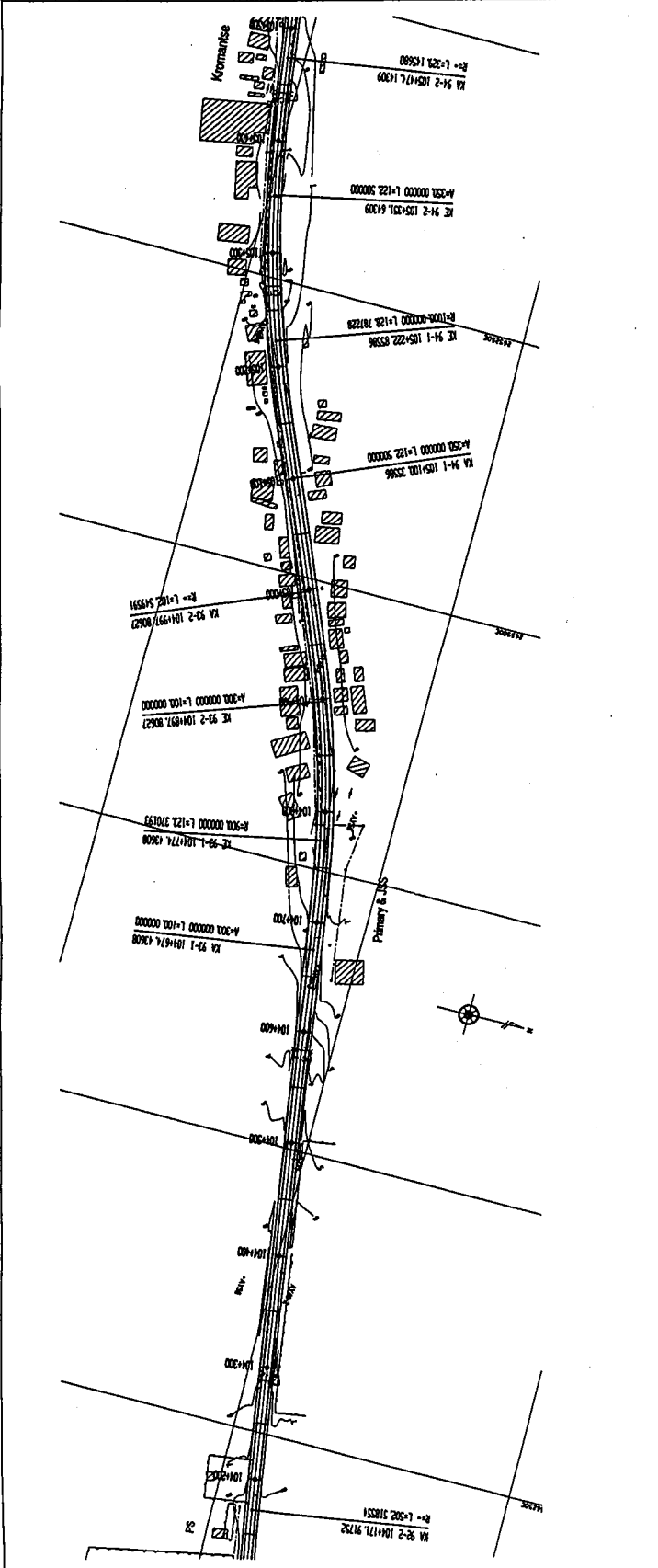
NOTES:

PROJECT: THE PROJECT FOR REHABILITATION OF TRUNK ROAD

TITLE: PLAN AND PROFILE (74/83)

SCALE: V = 1:200
H = 1:2000

DRAWING No: PL-74



GOVERNMENT
OF
THE REPUBLIC OF GHANA

MINISTRY
OF
ROAD AND TRANSPORT
GHANA HIGHWAY
AUTHORITY

KATAHIRA & ENGINEERS
INTERNATIONAL

NOTES:

PROJECT:

THE PROJECT FOR
REHABILITATION OF
TRUNK ROAD

TITLE:

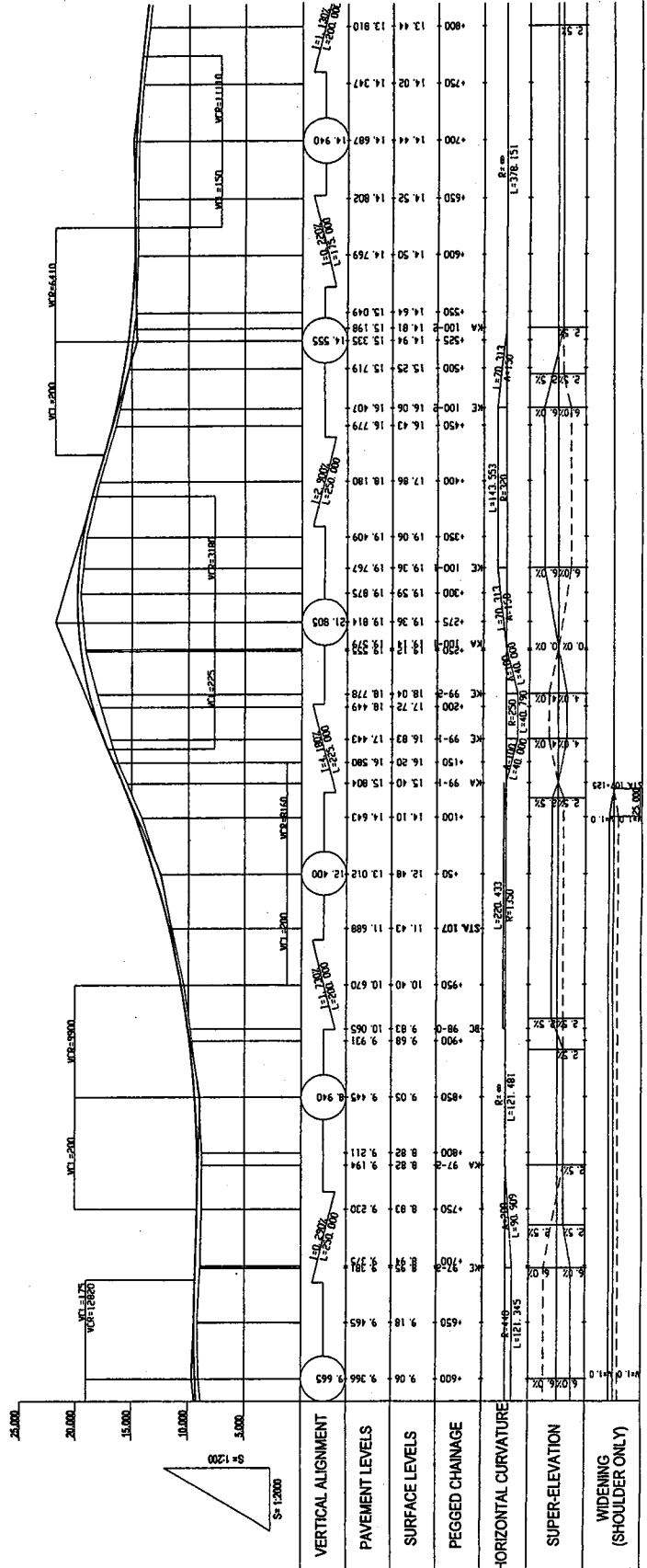
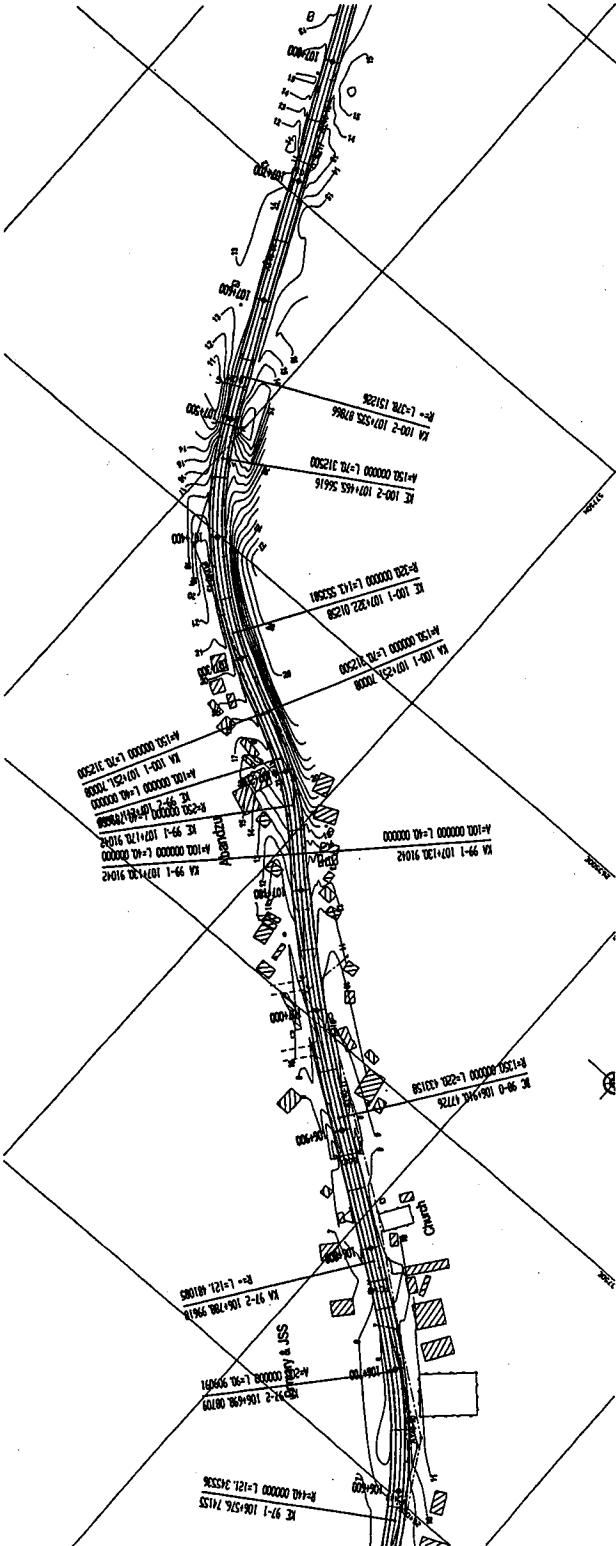
PLAN AND PROFILE (76/85)

SCALE:

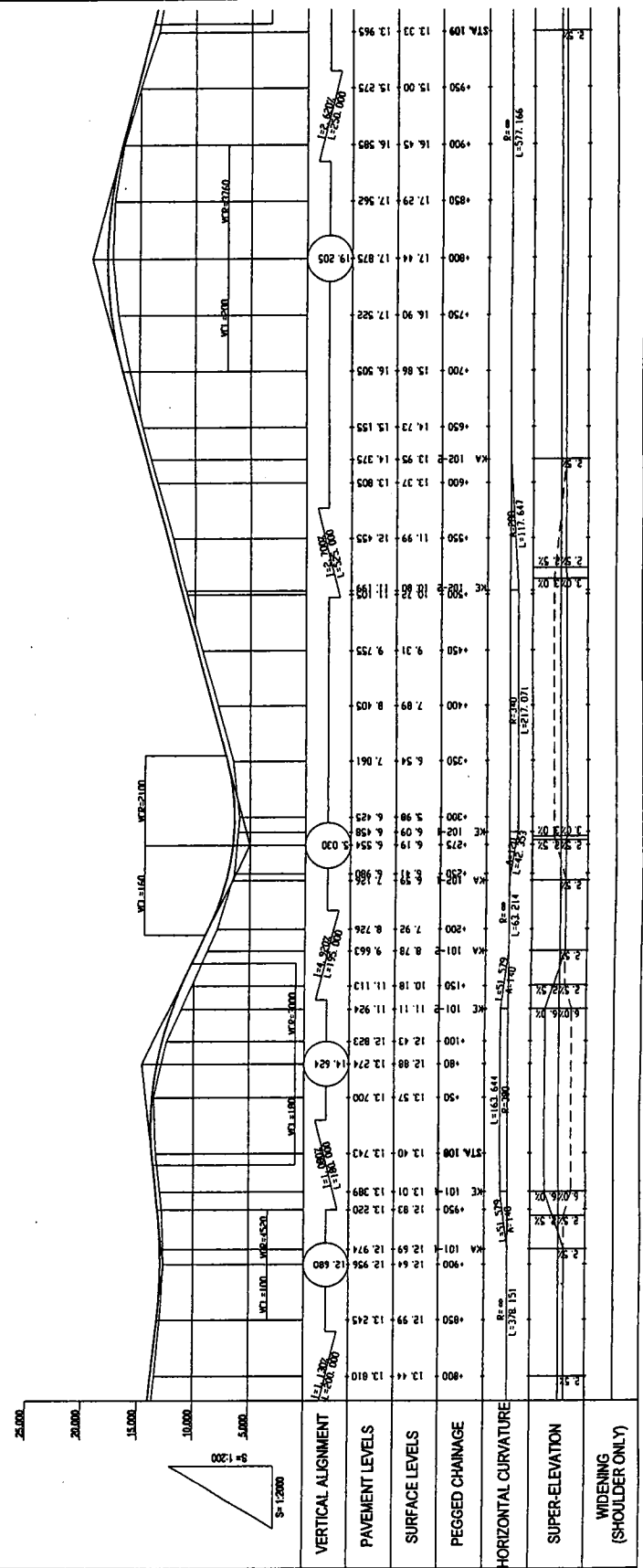
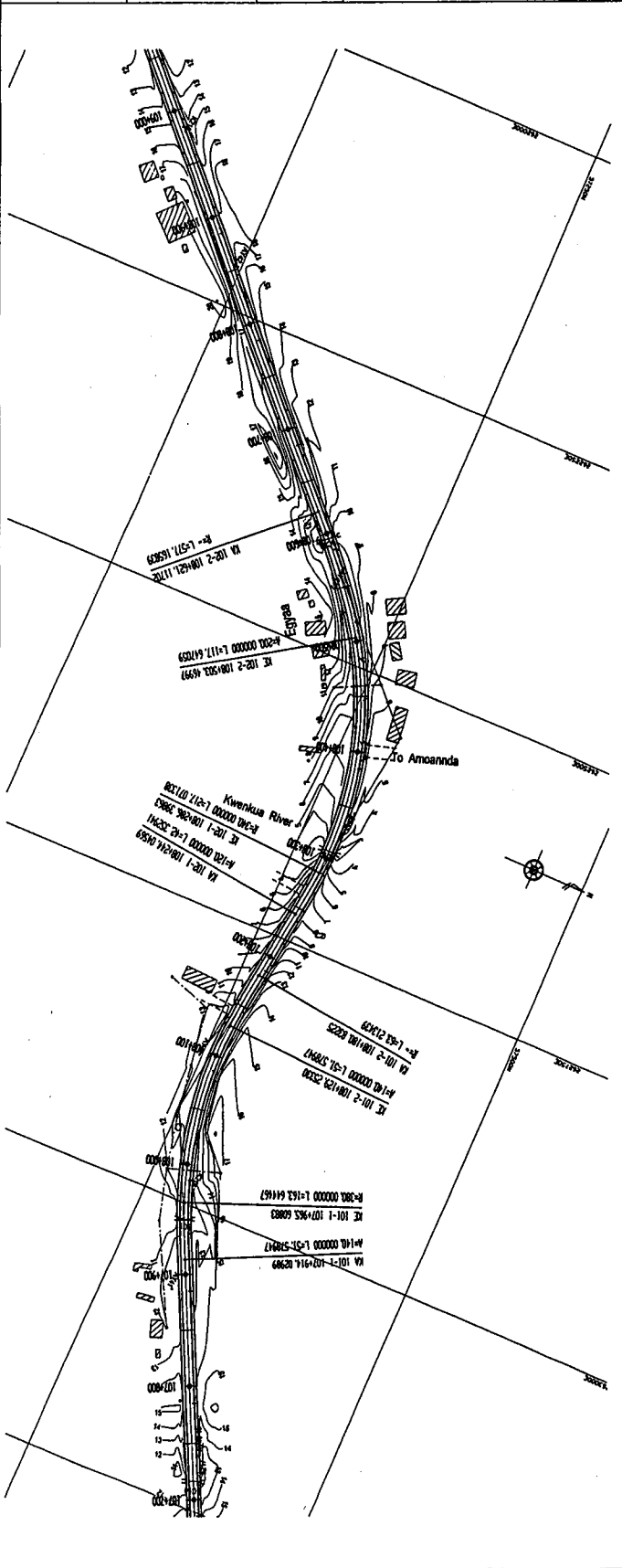
V = 1:200
H = 1:2000

DRAWING No.:

PL-76



GOVERNMENT OF THE REPUBLIC OF GHANA
 MINISTRY OF ROAD AND TRANSPORT GHANA HIGHWAY AUTHORITY
 KATAHIRA & ENGINEERS INTERNATIONAL
 NOTES:
 PROJECT: THE REHABILITATION OF TRUNK ROAD
 TITLE: PLAN AND PROFILE (77/83)
 SCALE: V = 1:200 H = 1:2000
 DRAWING NO: PL-77



GOVERNMENT OF THE REPUBLIC OF GHANA

MINISTRY OF ROAD AND TRANSPORT GHANA HIGHWAY AUTHORITY

KATAHIRA & ENGINEERS INTERNATIONAL

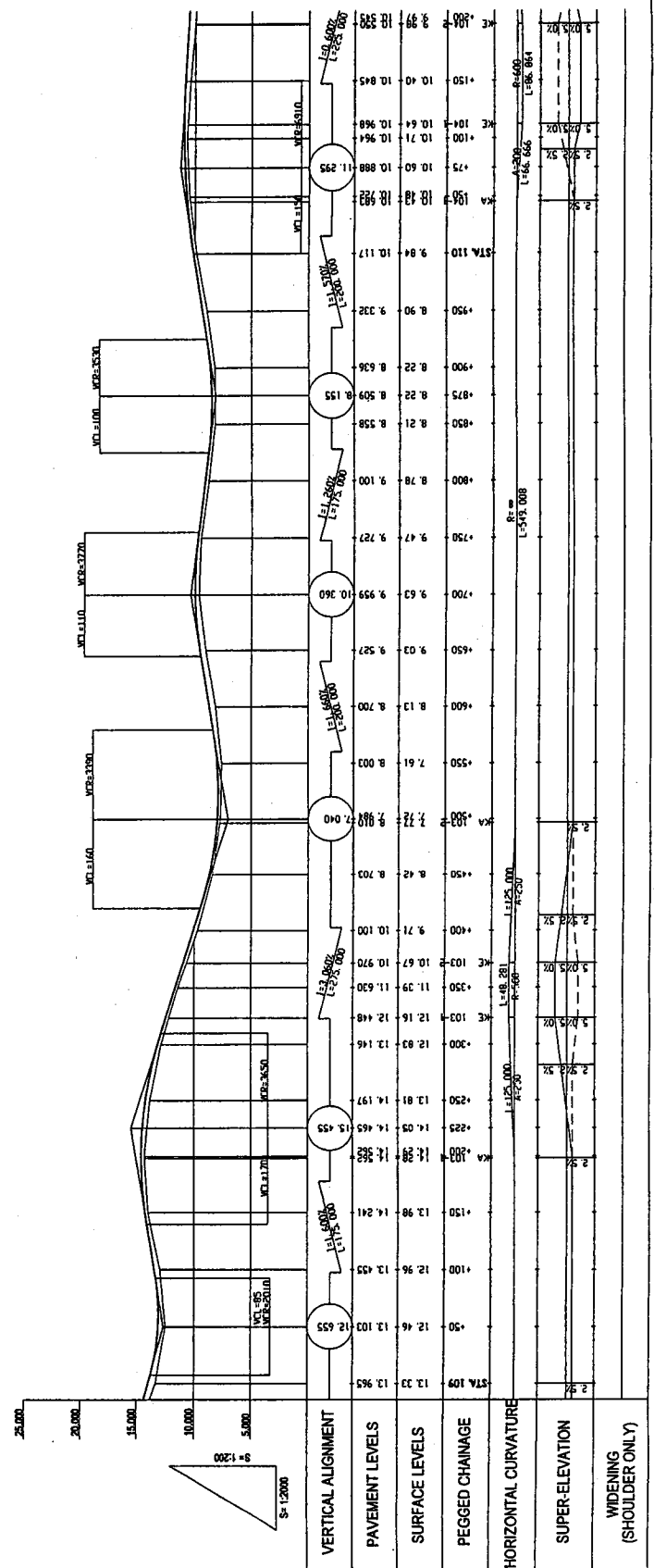
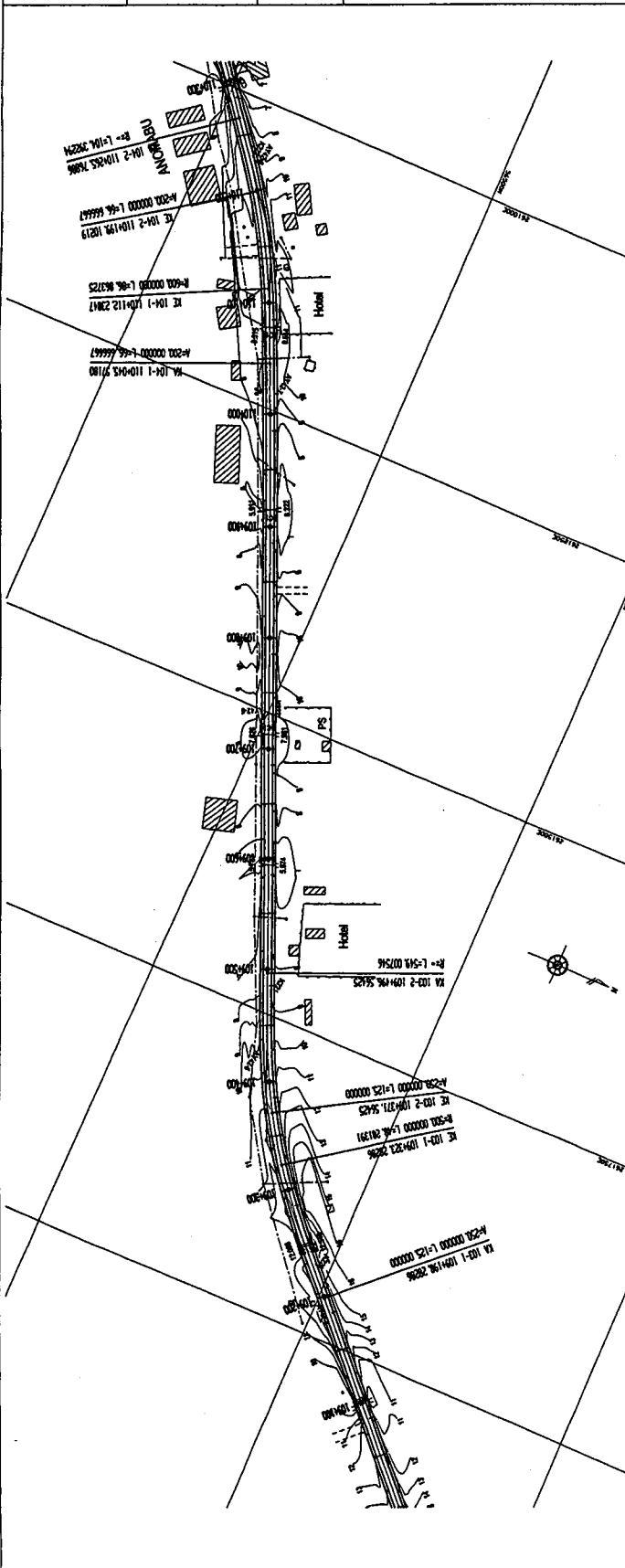
NOTES:

PROJECT: THE PROJECT FOR REHABILITATION OF TRUNK ROAD

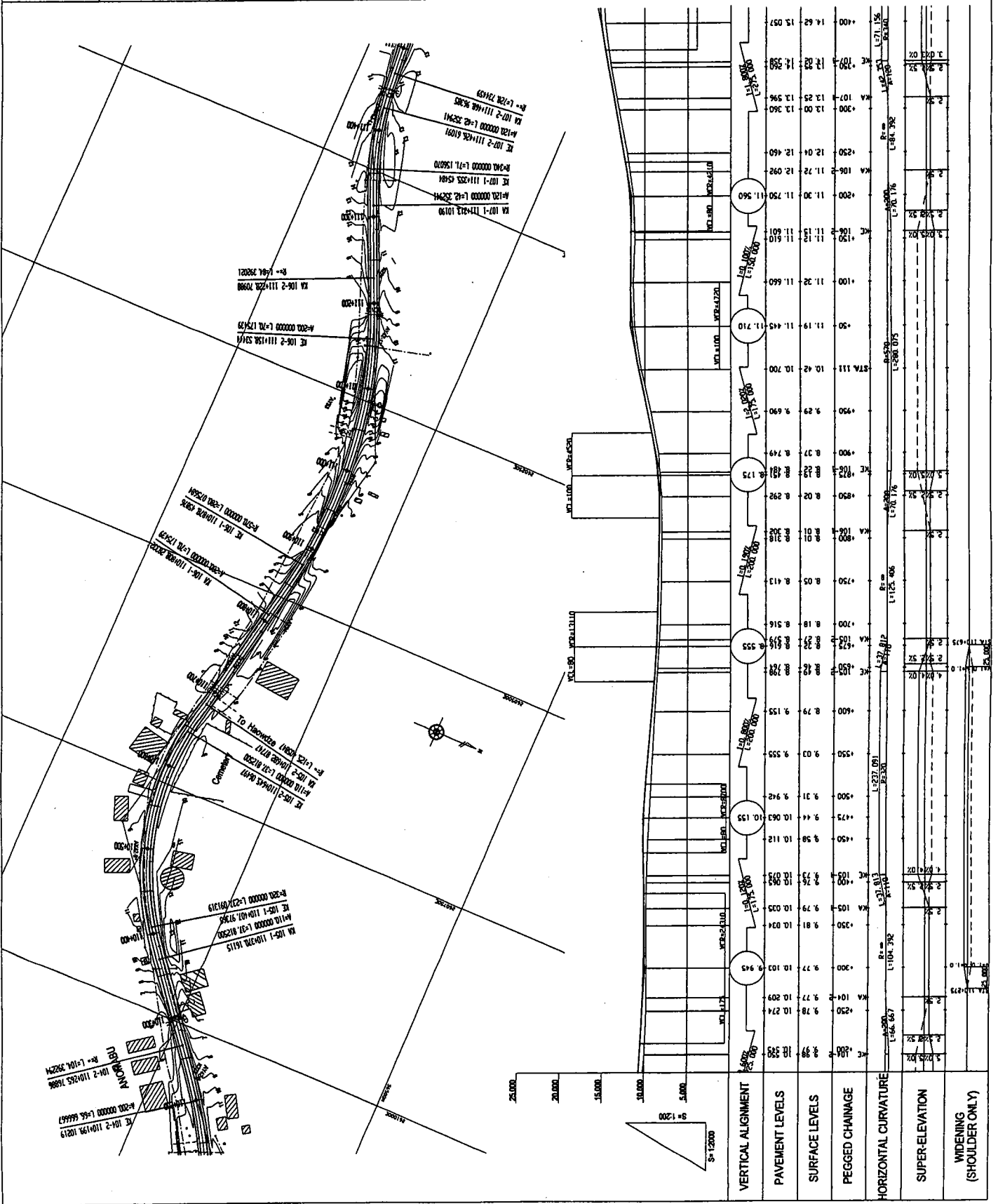
TITLE: PLAN AND PROFILE (78/83)

SCALE: V = 1:200 H = 1:2000

DRAWING No: PL-78



GOVERNMENT OF THE REPUBLIC OF GHANA	MINISTRY OF ROAD AND TRANSPORT GHANA HIGHWAY AUTHORITY	KATAHIRA & ENGINEERS INTERNATIONAL	NOTES:	PROJECT: THE PROJECT FOR REHABILITATION OF TRUNK ROAD	TITLE: PLAN AND PROFILE (79/83)
				SCALE: V = 1:200 H = 1:2000	DRAWING No: PL-79



GOVERNMENT OF THE REPUBLIC OF GHANA

MINISTRY OF ROAD AND TRANSPORT GHANA HIGHWAY AUTHORITY

KATAHIRA & ENGINEERS INTERNATIONAL

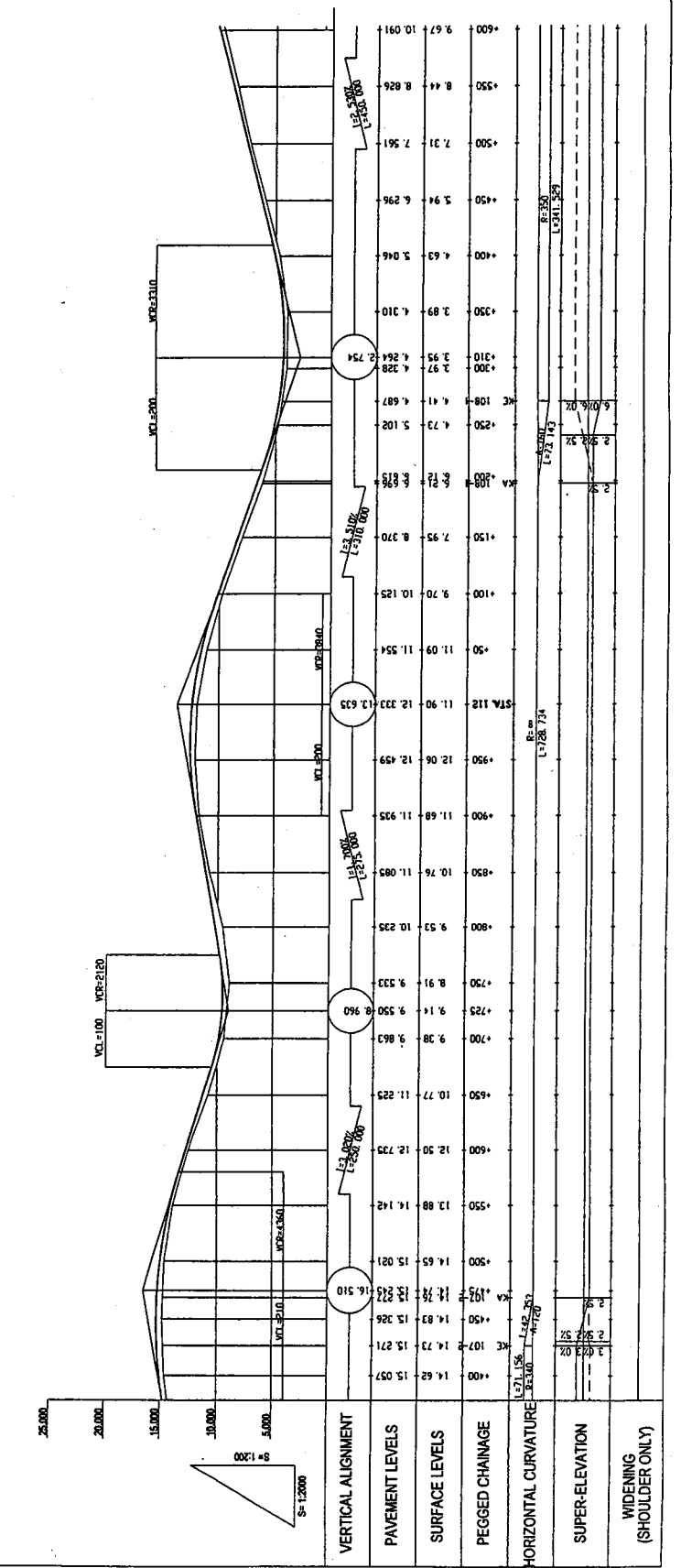
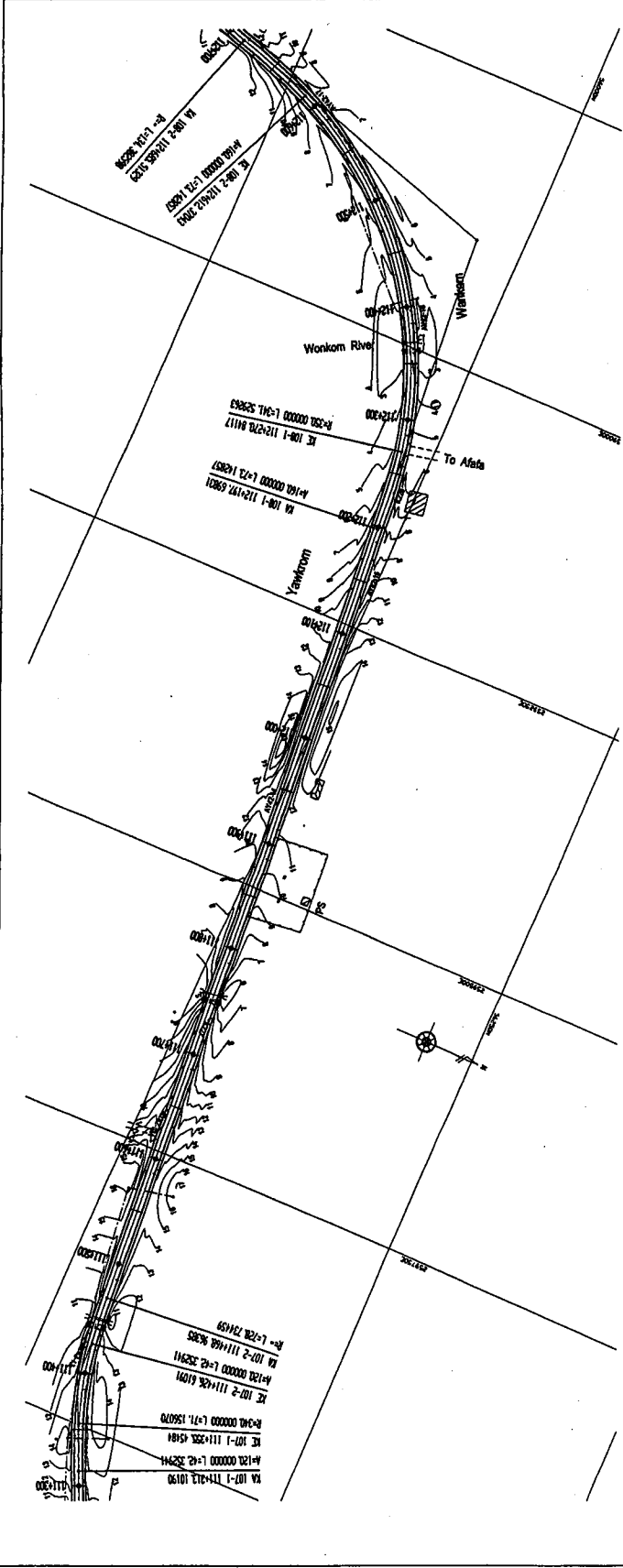
NOTES:

PROJECT: THE PROJECT FOR REHABILITATION OF TRUNK ROAD

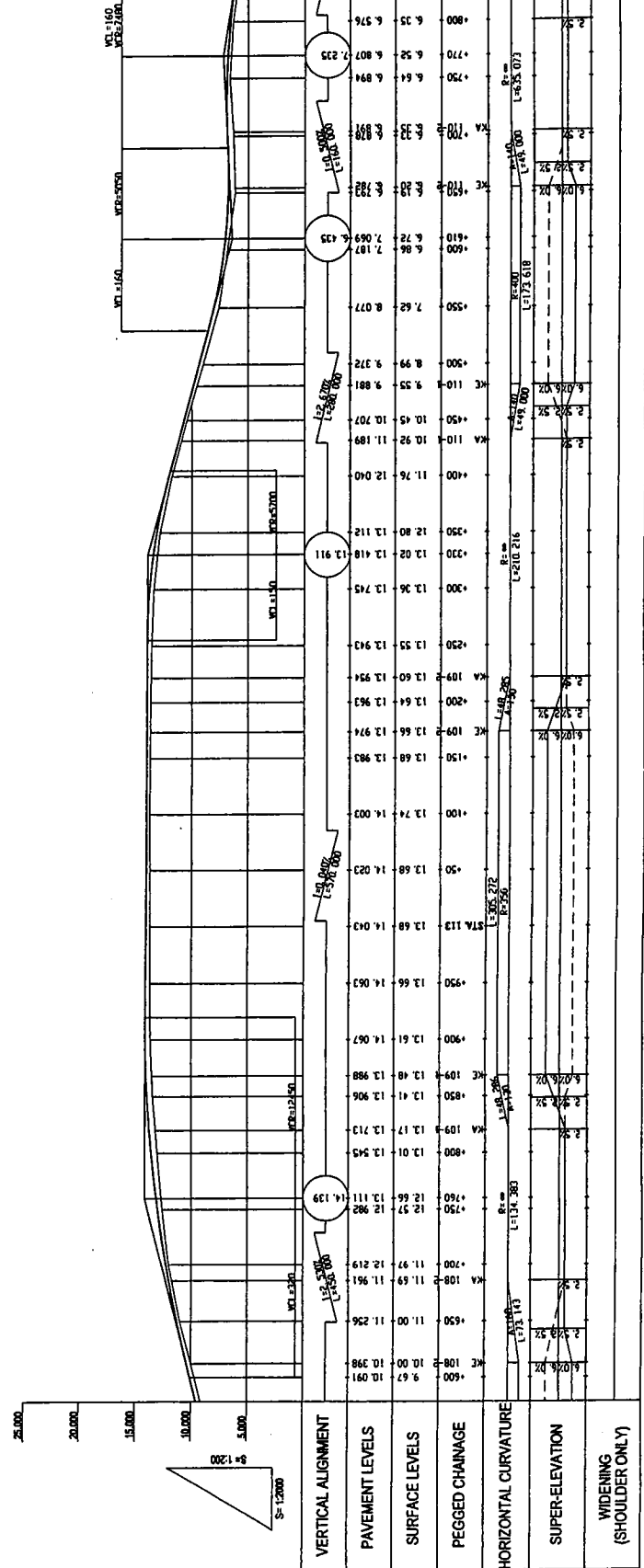
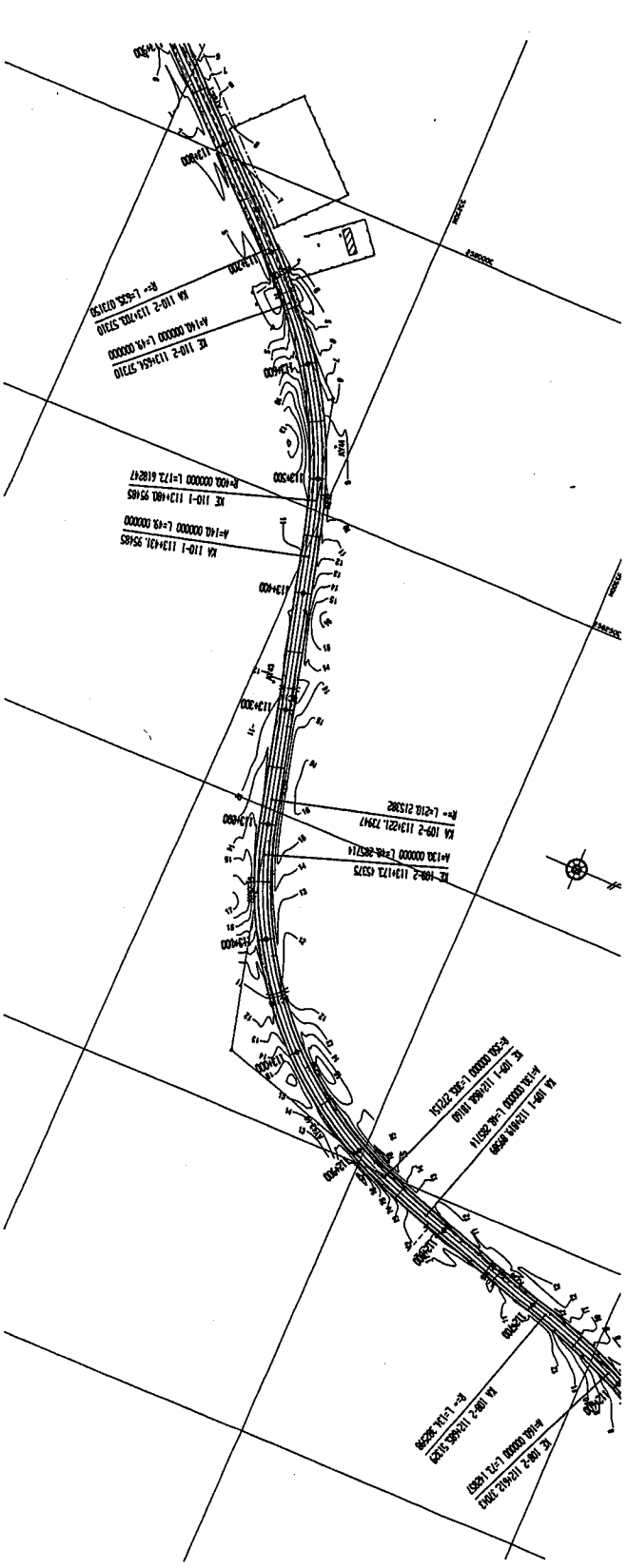
TITLE: PLAN AND PROFILE (80/83)

SCALE: V = 1:2000 H = 1:2000

DRAWING No: PL-80



GOVERNMENT OF THE REPUBLIC OF GHANA
 MINISTRY OF ROAD AND TRANSPORT GHANA HIGHWAY AUTHORITY
 KATAHIRA & ENGINEERS INTERNATIONAL
 NOTES:
 PROJECT: THE PROJECT FOR REHABILITATION OF TRUNK ROAD
 TITLE: PLAN AND PROFILE (81/83)
 SCALE: V = 1:200 H = 1:2000
 DRAWING No: PL-81



GOVERNMENT OF THE REPUBLIC OF GHANA

MINISTRY OF ROAD AND TRANSPORT GHANA HIGHWAY AUTHORITY

KATAHIRA & ENGINEERS INTERNATIONAL

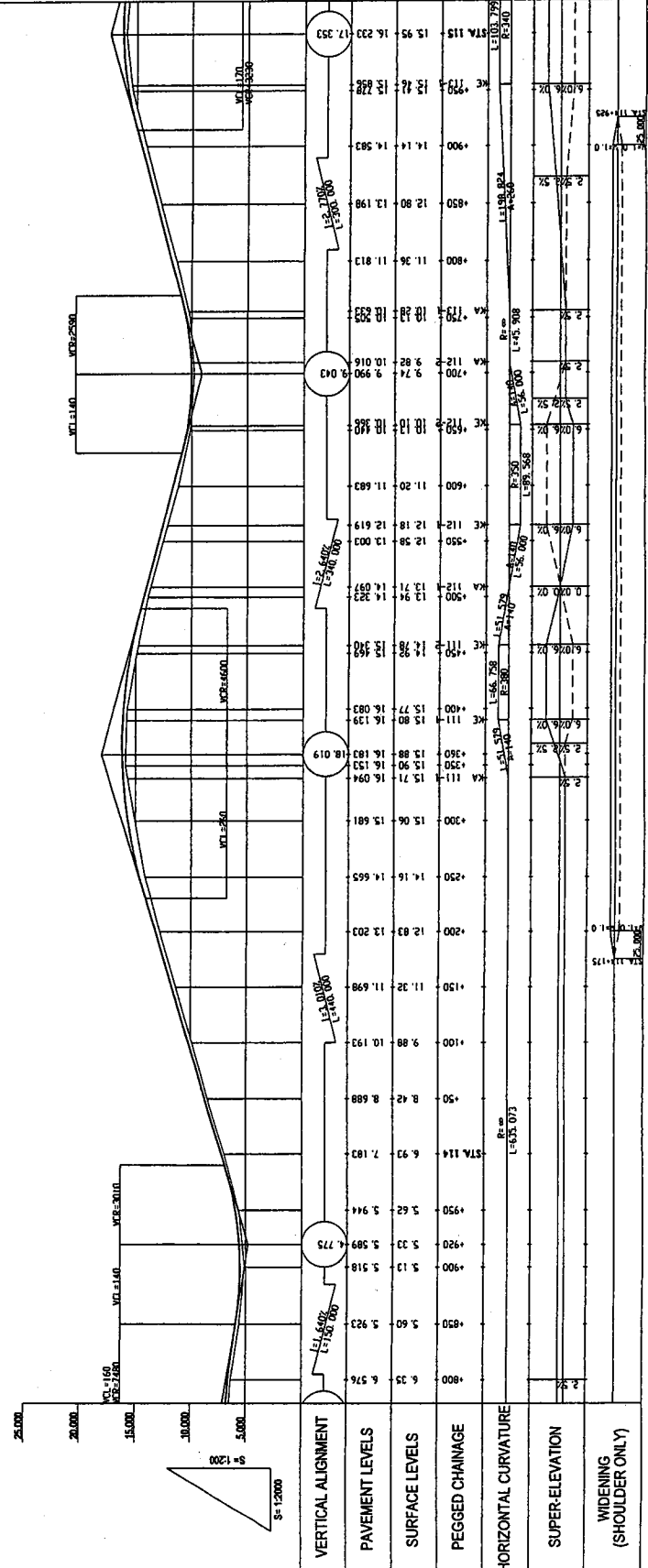
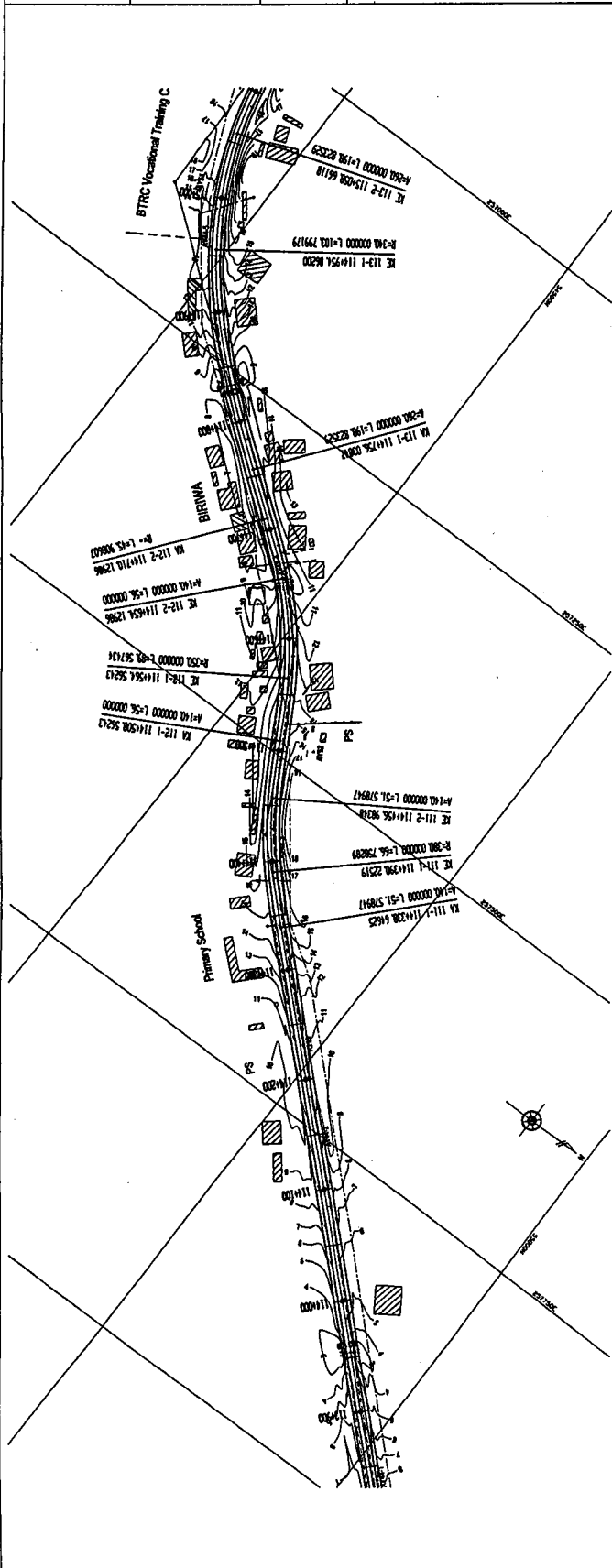
NOTES:

PROJECT: THE PROJECT FOR REHABILITATION OF TRUNK ROAD

TITLE: PLAN AND PROFILE (82/83)

SCALE: V = 1:200 H = 1:2000

DRAWING No: PL-82



GOVERNMENT OF THE REPUBLIC OF GHANA

MINISTRY OF ROAD AND TRANSPORT GHANA HIGHWAY AUTHORITY

KATAHIRA & ENGINEERS INTERNATIONAL

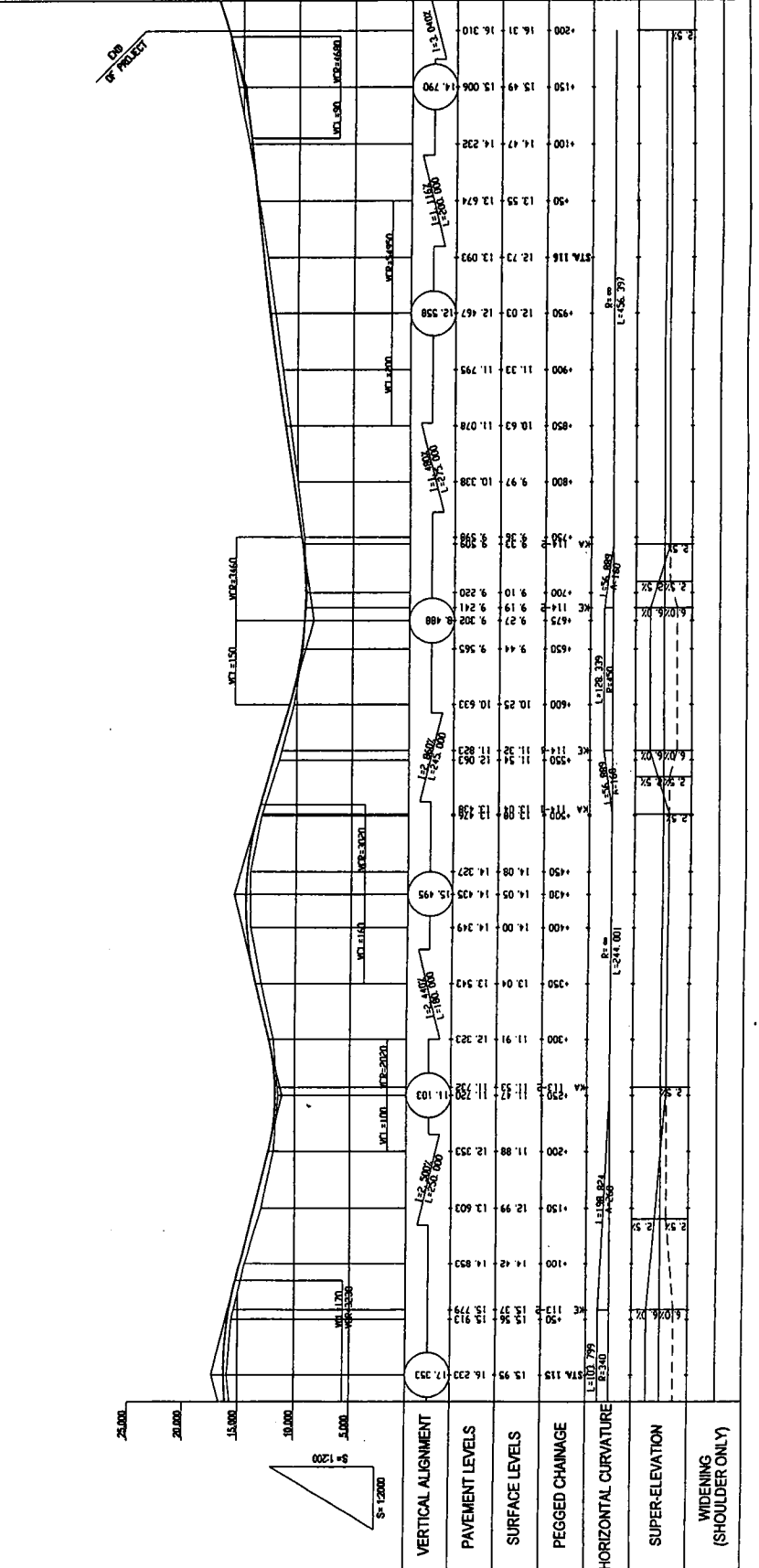
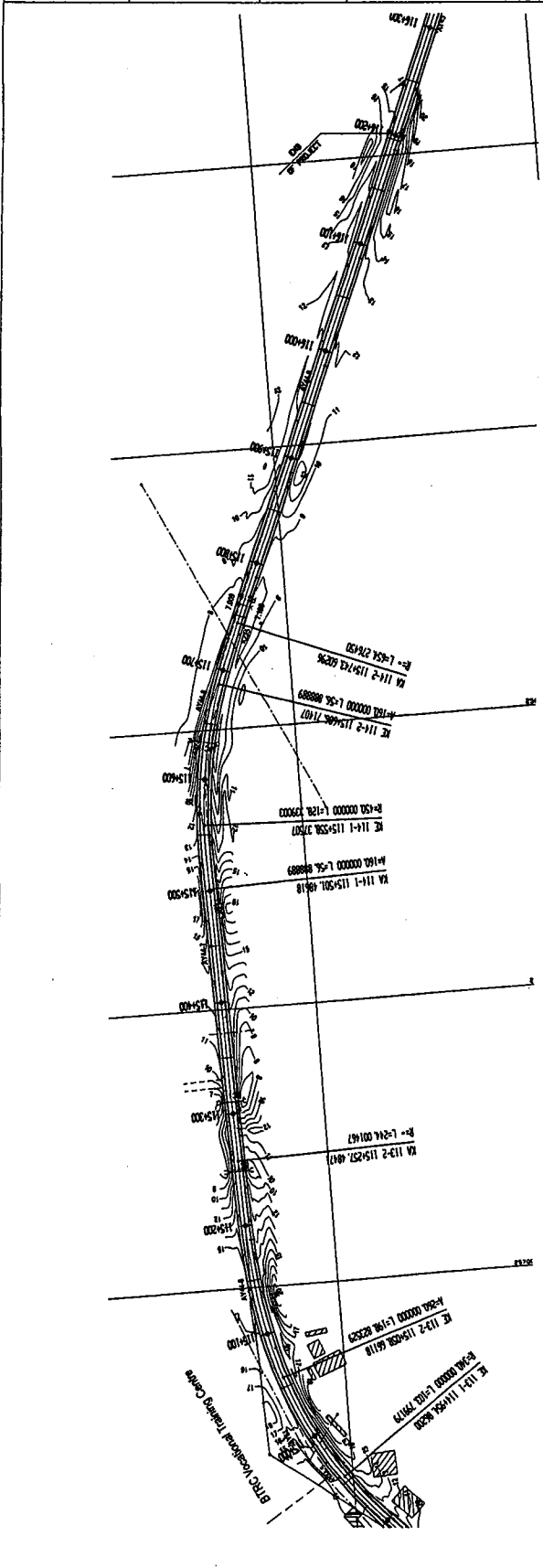
NOTES:

PROJECT: THE PROJECT FOR REHABILITATION OF TRUNK ROAD

TITLE: PLAN AND PROFILE (83/83)

SCALE: V = 1:200 H = 1:2000

DRAWING No: PL-83



GOVERNMENT OF THE REPUBLIC OF GHANA	MINISTRY OF ROAD AND TRANSPORT GHANA HIGHWAY AUTHORITY	KATAHIRA & ENGINEERS INTERNATIONAL	PROJECT: THE PROJECT FOR REHABILITATION OF TRUNK ROAD
			TITLE: GENERAL PLAN AT WINNEBA ROUNDABOUT
			SCALE: S = 1:500
			DRAWING No: RA-01

