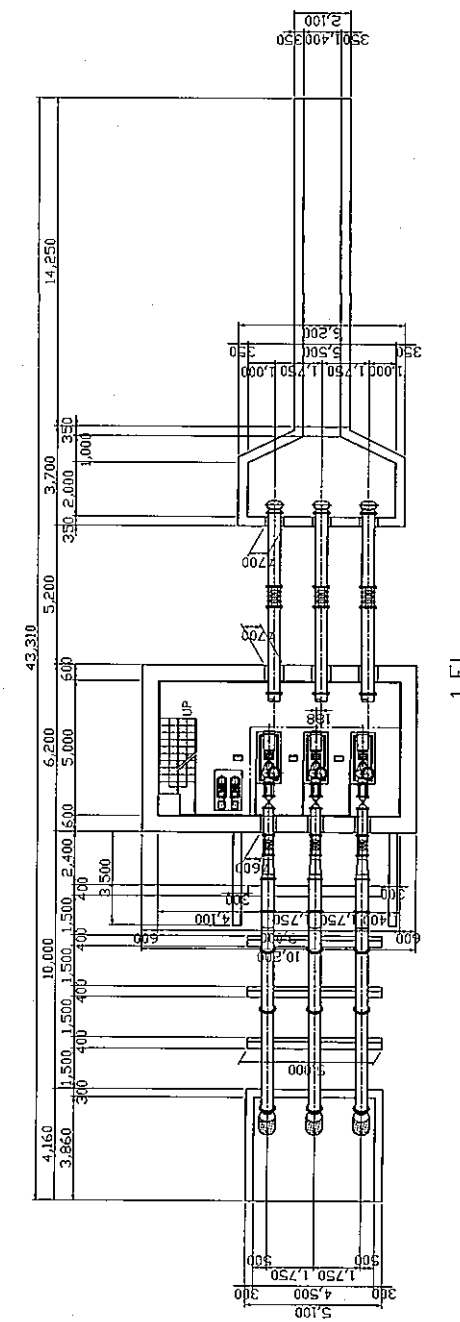
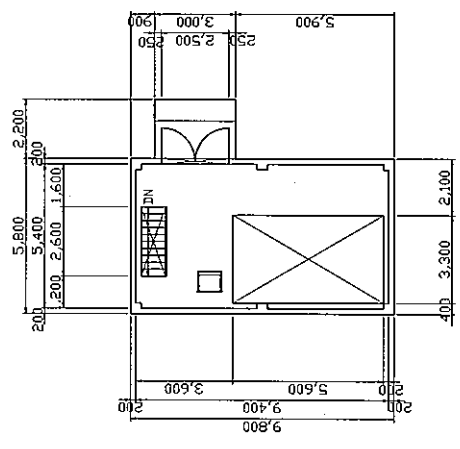


SOCIALIST REPUBLIC OF VIETNAM	
THE BASIC DESIGN STUDY ON THE PROJECT FOR IMPROVEMENT OF RURAL LIVING CONDITION IN NAM DAY DISTRICT IN NGHIE AN PROVINCE IN SOCIALIST REPUBLIC OF VIETNAM	
PUMP STATION GENERAL PLAN Nam Trung Canal	
Date	No. 3
1/100	
JAPAN INTERNATIONAL COOPERATION AGENCY	

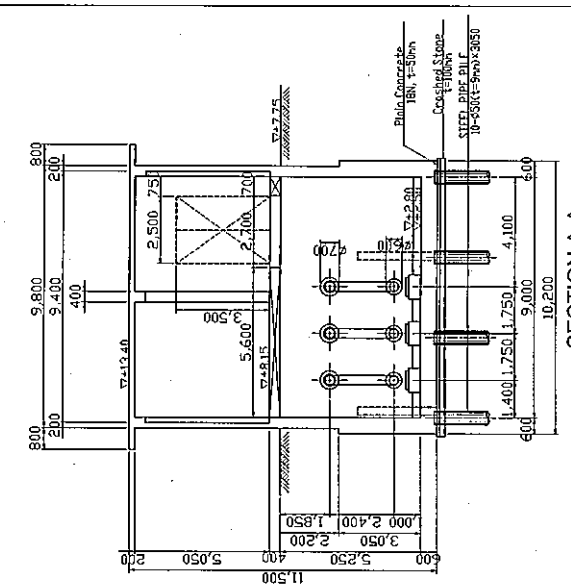
GENERAL PLAN
S=1:100



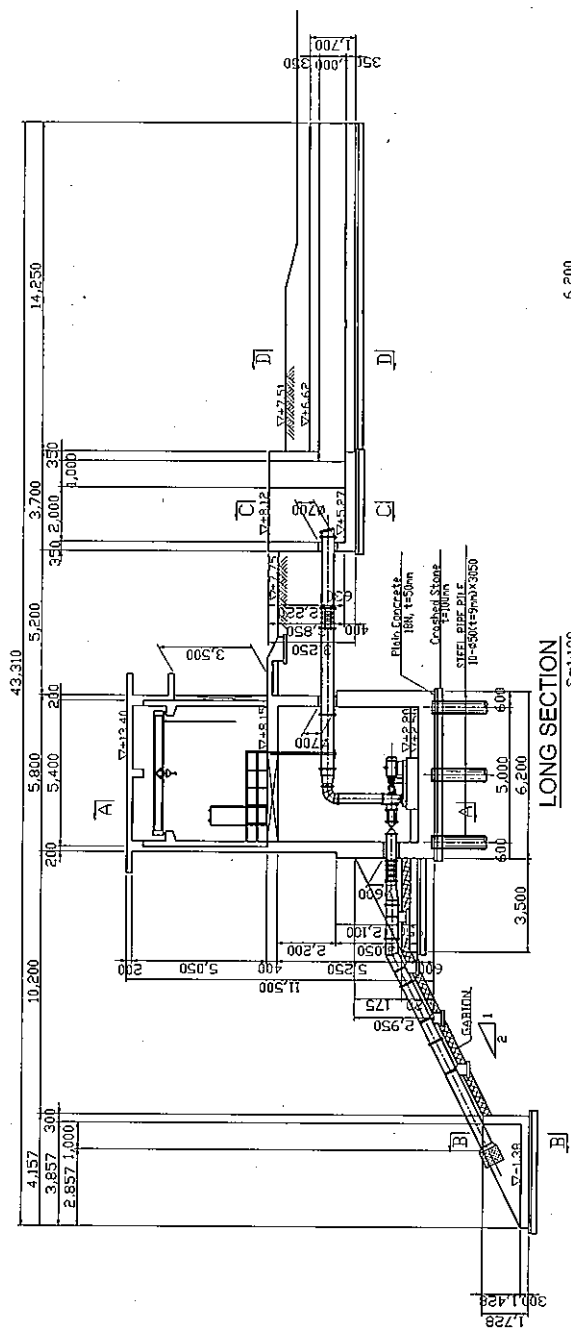
2 FL

PLAN
S=1/1000

1 FL

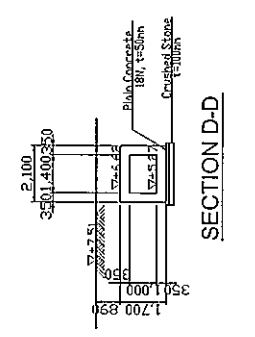


SECTION A-A

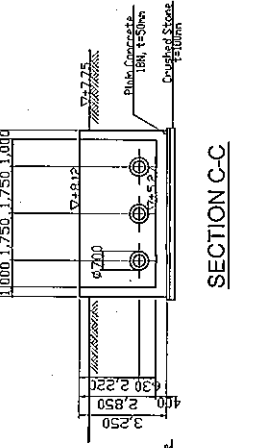


LONG SECTION
S=1/1100

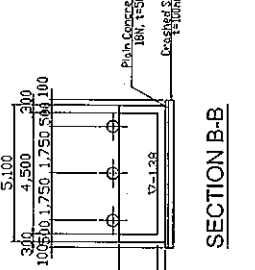
SOCIALIST REPUBLIC OF VIETNAM			
THE BASIC DESIGN STUDY ON THE PROJECT FOR IMPROVEMENT OF RURAL LIVING CONDITION IN NAM DAN DISTRICT IN NGHE AN PROVINCE IN SOCIALIST REPUBLIC OF VIET NAM			
PUMP STATION SECTION		Nam Trung Canal	
Date	No.4	1/100	
JAPAN INTERNATIONAL COOPERATION AGENCY			



SECTION D-D

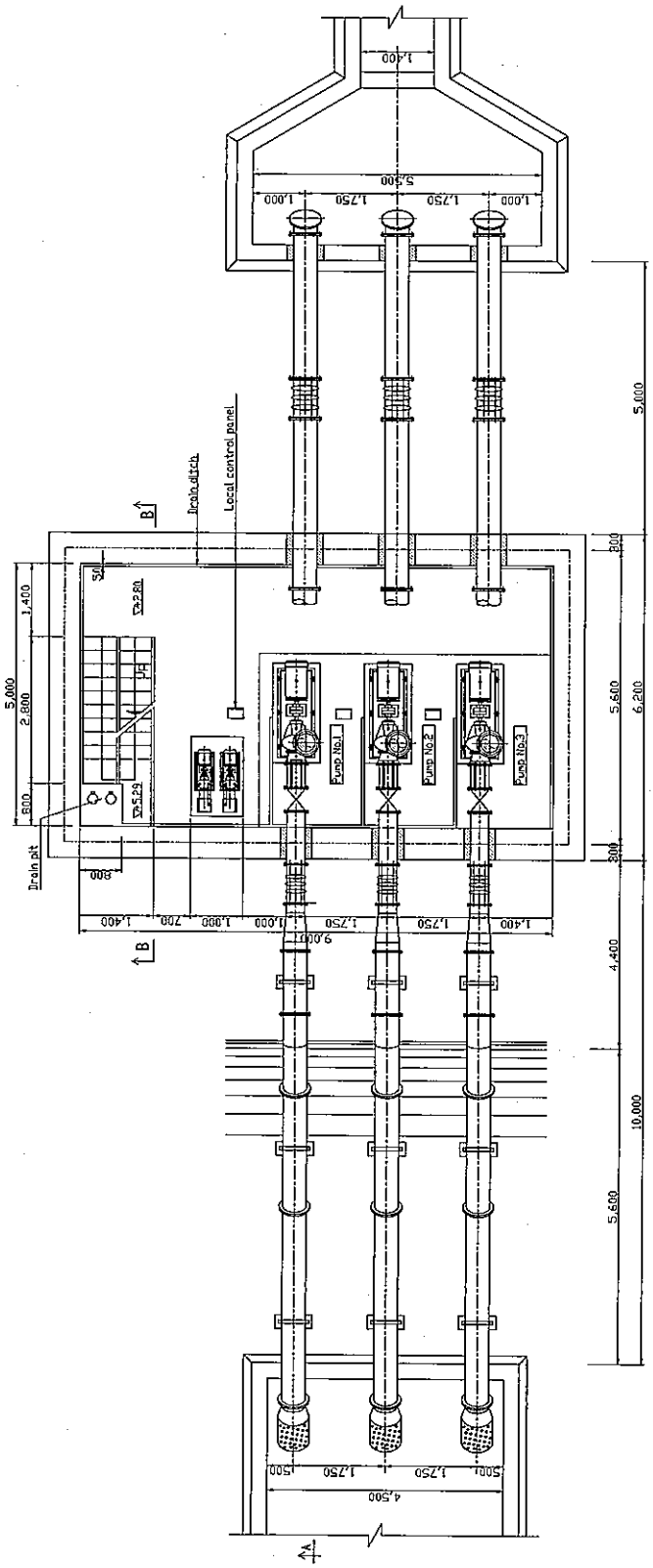


SECTION C-C

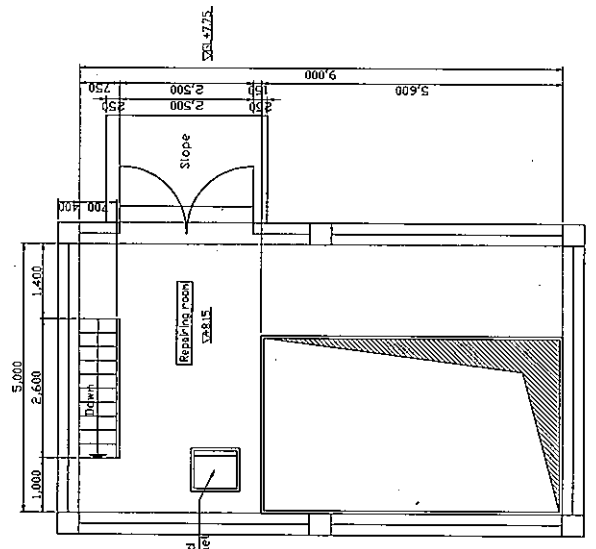


SECTION B-B

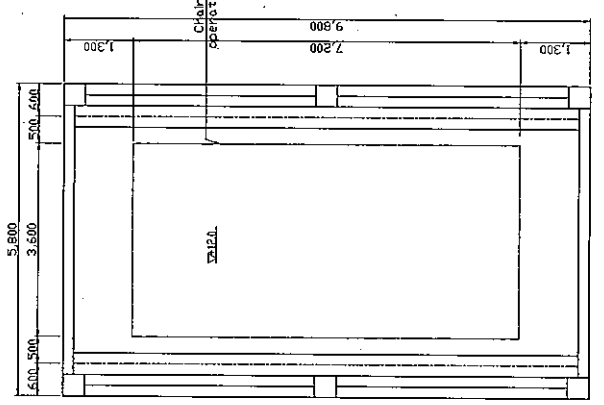
SOCIALIST REPUBLIC OF VIETNAM	
THE BASIC DESIGN STUDY ON THE PROJECT FOR IMPROVEMENT OF RURAL LIVING CONDITIONS IN NAM DAN DISTRICT IN NGHIA AN PROVINCE IN SOCIALIST REPUBLIC OF VIET NAM	
GENERAL ARRANGEMENT PLAN VIEW	
Nam Trung Canal	
Date	No. 5
	1/100
JAPAN INTERNATIONAL COOPERATION AGENCY	

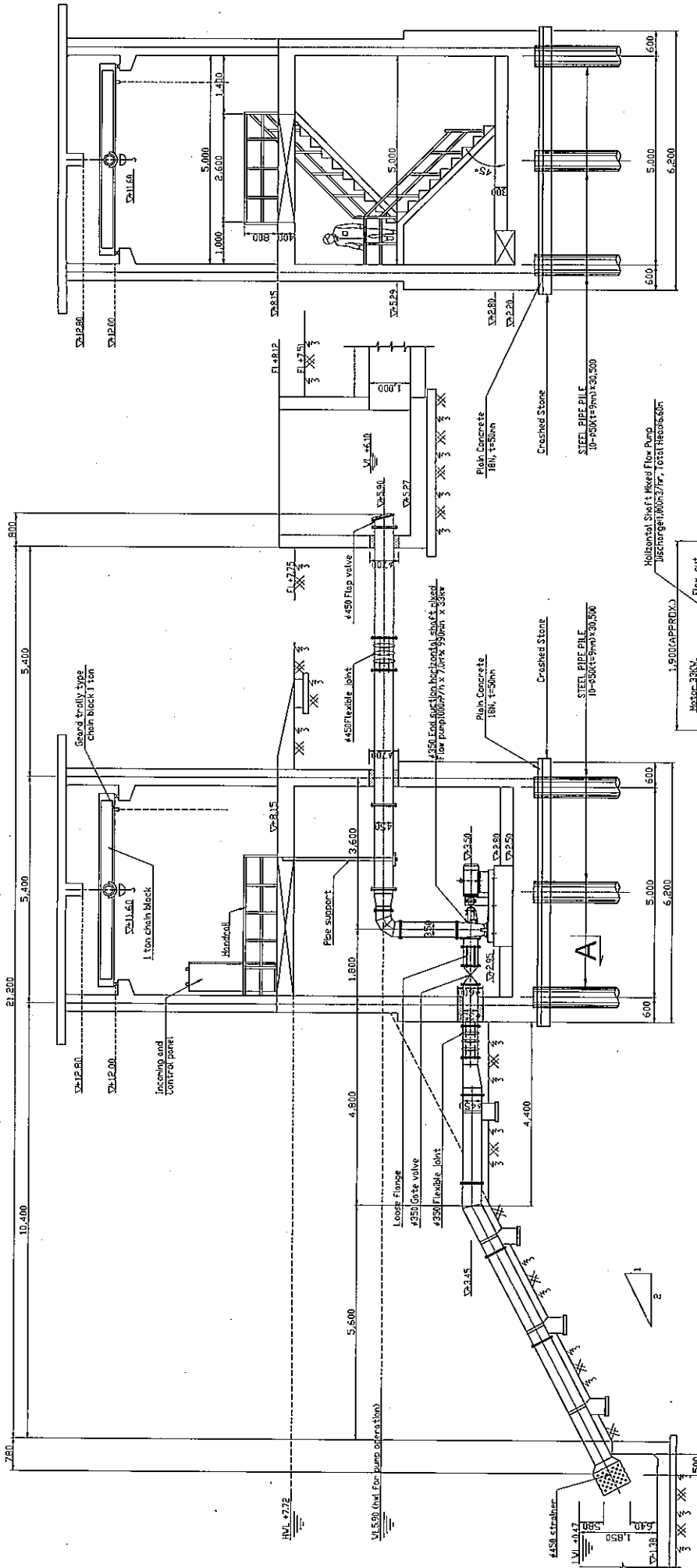


1 FL



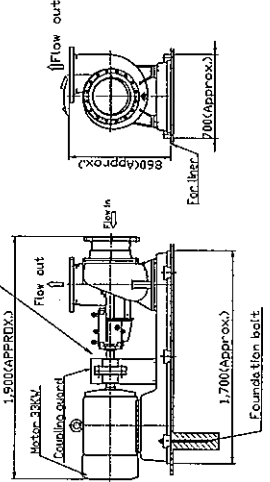
2 FL





Section a-a

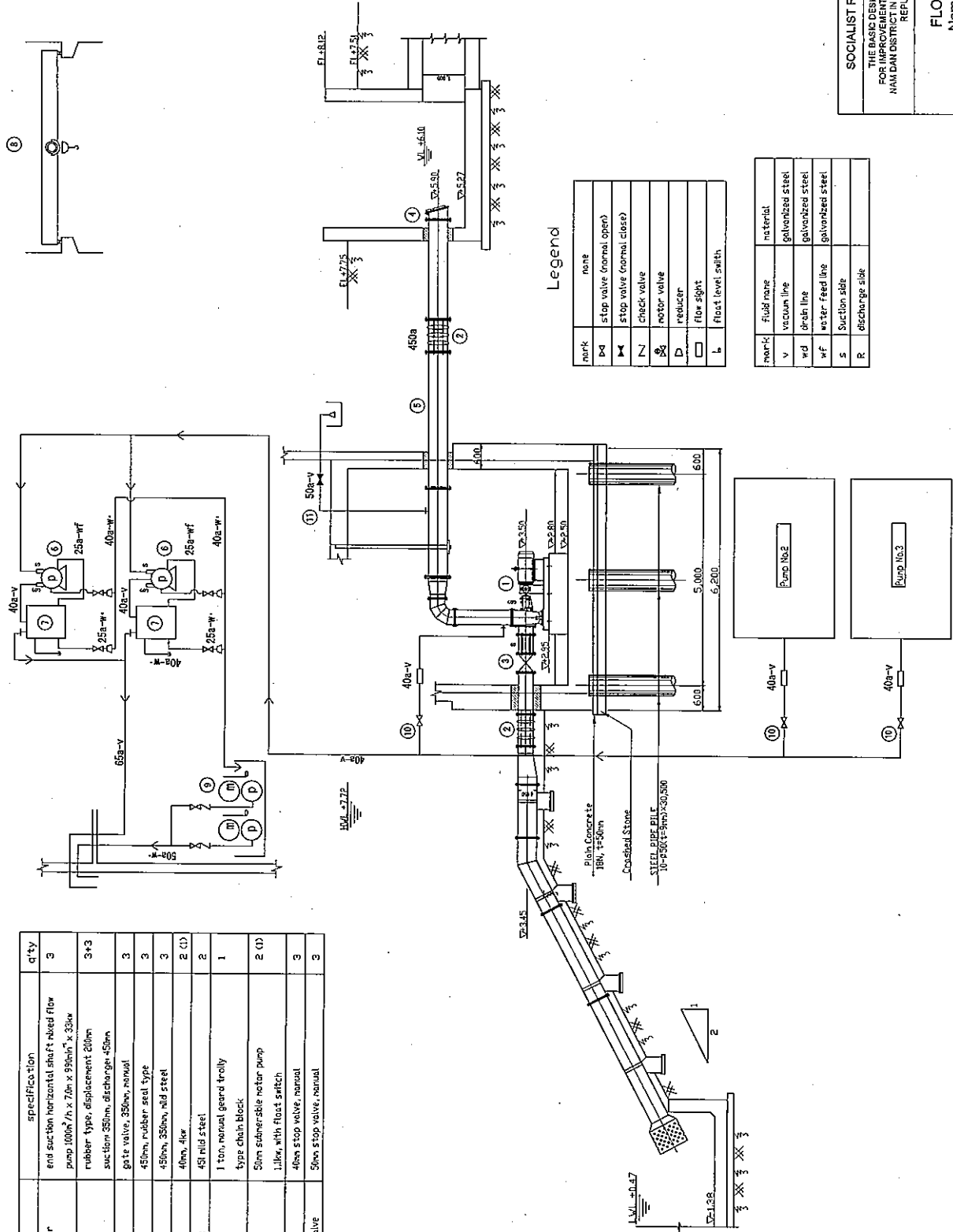
Section b-b



Pump & Motor details
1/40

SOCIALIST REPUBLIC OF VIETNAM	
THE BASIC DESIGN STUDY ON THE PROJECT FOR IMPROVEMENT OF RURAL LIVING CONDITIONS IN NAM DAN DISTRICT IN NGHIE AN PROVINCE IN SOCIALIST REPUBLIC OF VIET NAM	
GENERAL ARRANGEMENT	
SECTION VIEW	
Nam Trung Canal	
Date	No. 6
	1/100
JAPAN INTERNATIONAL COOPERATION AGENCY	

no	item	specification	q'ty
①	rub pipe and notor	ens suction horizontal shaft fixed flow pump 1000m ³ /h x 70m x 950mm x 33kw	3
②	flexible joint	rubber type, displacement 20mm suction 350mm, discharge 450mm	3+3
③	suction vale	gate valve, 350mm, manual	3
④	flap vale	450mm rubber seal type	3
⑤	rub pipe	450mm, 350mm, mild steel	3
⑥	vacuum pump	40mm, 4kw	2 (1)
⑦	water supply tank	45l mild steel	2
⑧	overhead crane	1 ton, manual gear trolly type chain block	1
⑨	pit drain pump	50mm edmersible notor pump 1.1kw, with float switch	2 (1)
⑩	vacuum valve	40m stop valve, manual	3
⑪	vacuum breaker valve	50m stop valve, manual	3



Legend

mark	name
none	none
b-d	stop valve (normal open)
stop valve (normal close)	stop valve (normal close)
Z	check valve
⊗	notor valve
D	reducer
□	flor sight
l	float level switch

mark	fluid name	material
v	vacuum line	galvanized steel
wd	drain line	galvanized steel
wf	water feed line	galvanized steel
s	Suction side	
R	discharge side	

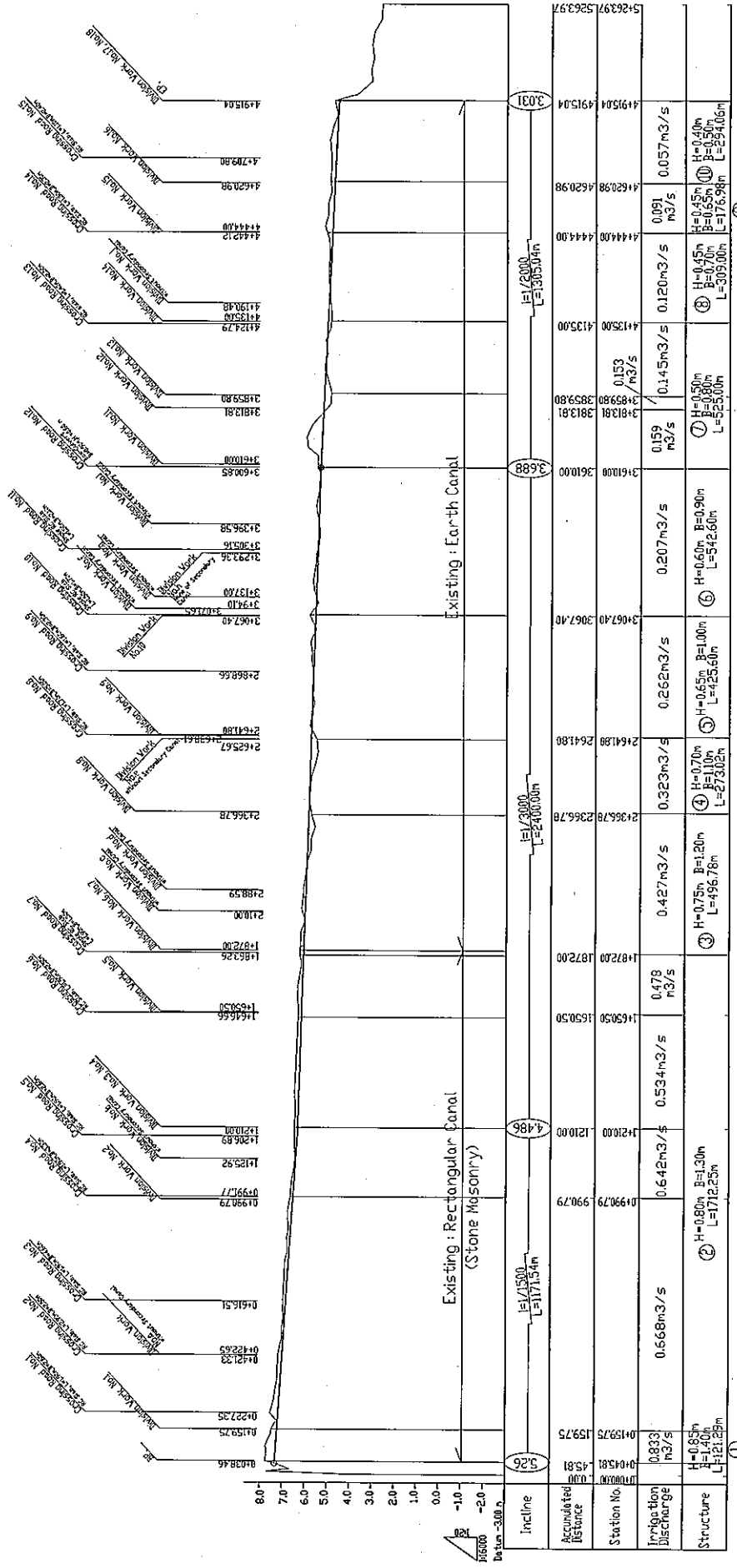
SOCIALIST REPUBLIC OF VIETNAM
 THE BASIC DESIGN STUDY ON THE PROJECT
 FOR IMPROVEMENT OF RURAL LIVING CONDITION IN
 NAM DAN DISTRICT IN NGHIE AN PROVINCE IN SOCIALIST
 REPUBLIC OF VIET NAM

FLOW SHEET
 Nam Trung Canal

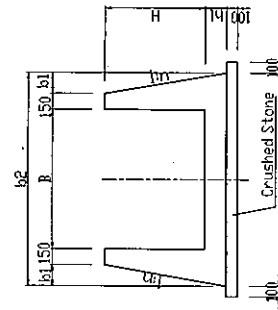
Date No. 7 1/100
 JAPAN INTERNATIONAL COOPERATION AGENCY

FLOW SHEET

PROFILE



Typical Section



Notes:
 #1: Expansion joint(Exp. Jnt.) shall be installed 10m per 1 set.
 Exp. Jnt. is composed of elastic filler and water stop.
 #2: Meshed Wire shall be installed bottom of canal as prevention of cracking.

Dimension

No	B	b1	b2	H	n	Extension
1	1.40	0.17	2.04	0.45	0.20	131.3
2	1.20	0.15	1.82	0.40	0.20	172.3
3	1.20	0.07	1.64	0.35	0.10	426.8
4	1.10	0.07	1.54	0.30	0.10	333.0
5	1.00	-	1.30	0.25	0.20	425.5
6	0.90	-	1.20	0.20	0.20	522.6
7	0.80	-	1.10	0.15	0.15	525.0
8	0.70	-	1.00	0.15	0.15	322.0
9	0.65	-	0.85	0.15	0.15	171.0
10	0.50	-	0.60	0.10	0.15	241.1

SOCIALIST REPUBLIC OF VIETNAM

THE BASIC DESIGN STUDY ON THE PROJECT
 FOR IMPROVING CANALS IN PHU THUAN DISTRICT
 NAM DAN DISTRICT IN NGHIE AN PROVINCE IN SOCIALIST
 REPUBLIC OF VIETNAM

PROFILE
 Nam Trung Canal

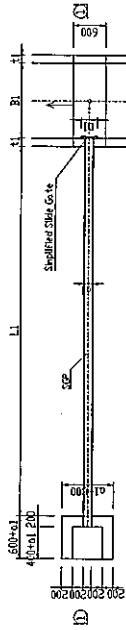
Date	No. 8	HS-142 VS-116.000
------	-------	----------------------

JAPAN INTERNATIONAL COOPERATION AGENCY

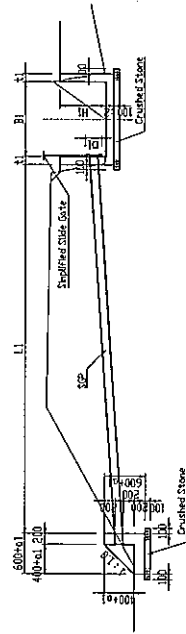
Division Work (1/3)

A-1 Type

Plan



Section ①-①

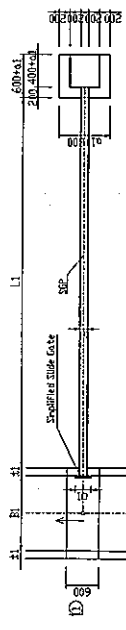


Dimension of Division Work (Type A-1)

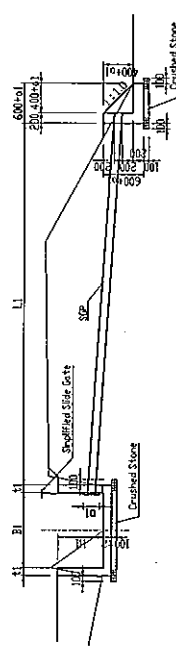
No.	Station No.	Type	B1	H1	L1	L2	H1	L1	H1	B1
a	1-422.15	A-1	1.30	0.60	0.20	0.25	0.15	4.00	0.25	0.25
b	2-38.99	A-1	1.20	0.60	0.20	0.25	0.20	4.00	0.30	0.30
c	3-34.10	A-1	0.90	0.60	0.15	0.20	0.15	3.00	0.25	0.25
d	4-193.43	A-1	0.70	0.45	0.15	0.20	0.20	3.00	0.25	0.25

A-2 Type

Plan



Section ①-①

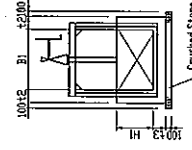


Dimension of Division Work (Type A-2)

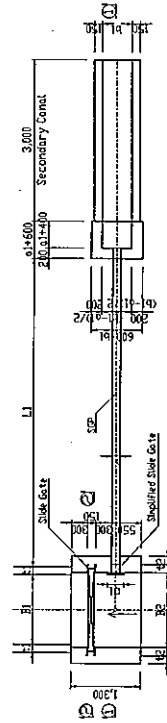
No.	Station No.	Type	B1	H1	L1	L2	H1	L1	H1	B1
b	1-212.00	A-2	1.30	0.60	0.20	0.25	0.25	3.00	0.25	0.25
c	2-10.00	A-2	1.20	0.60	0.20	0.25	0.15	4.00	0.30	0.30
d	3-625.67	A-2	1.10	0.70	0.20	0.20	0.20	5.00	0.30	0.30
e	3-137.00	A-2	0.90	0.60	0.15	0.20	0.20	3.00	0.20	0.20
f	3-251.38	A-2	0.90	0.60	0.15	0.20	0.15	3.00	0.22	0.22
g	3-338.58	A-2	0.90	0.60	0.15	0.20	0.20	4.00	0.40	0.40

B-1 Type

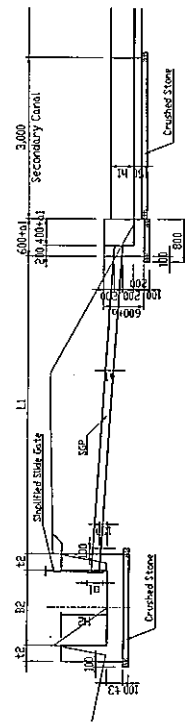
Section ②-②



Plan



Section ①-①



Dimension of Division Work (Type B-1)

No.	Station No.	Type	B1	H1	L1	L2	H1	L1	H1	B1
8	1-650.50	B-1	1.30	0.60	0.20	0.20	0.25	4.70	0.55	0.55
9	2-367.40	B-1	0.80	0.60	0.15	0.20	0.20	5.40	0.55	0.55
10	3-417.00	B-1	0.80	0.60	0.15	0.20	0.20	10.00	0.40	0.40
11	3-553.80	B-1	0.80	0.50	0.15	0.20	0.15	4.00	0.35	0.35
12	4-134.00	B-1	0.80	0.50	0.15	0.20	0.15	4.00	0.25	0.25
13	4-444.00	B-1	0.70	0.45	0.15	0.20	0.15	4.00	0.25	0.25
14	4-820.38	B-1	0.65	0.45	0.15	0.20	0.15	5.00	0.30	0.30

SOVIET REPUBLIC OF VIETNAM

THE BASIS DESIGN STUDY ON THE PROJECT
FOR IMPROVEMENT OF RURAL LIVING CONDITION IN
NAM DAN DISTRICT IN NGHIE AN PROVINCE IN SOCIALIST
REPUBLIC OF VIETNAM

DIVISION WORK (1/3)

Nam Trung Canal

Date

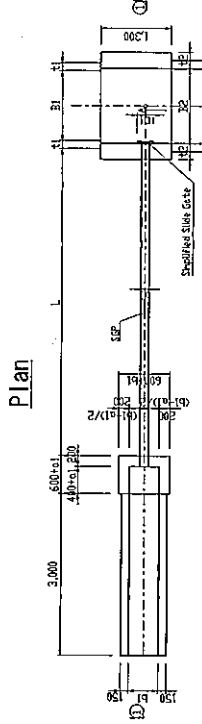
No.9

1/100

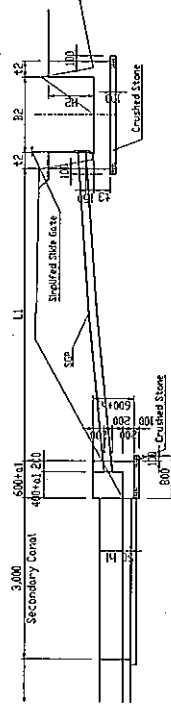
JAPAN INTERNATIONAL COOPERATION AGENCY

Division Work (2/3)

B-2 Type



Section ①-①

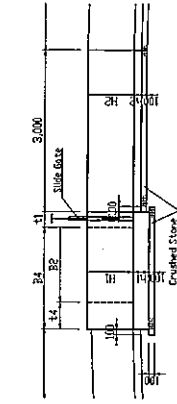


Dimension of Division Work (Type B-2)

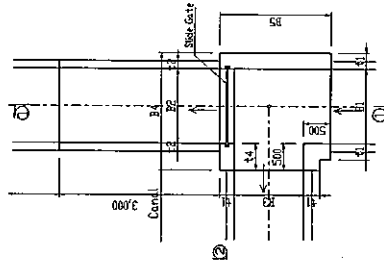
No.	Station No.	Type	B1	H1	L1	B2	H2	L2	L3	L4	D1	M1	D2	M2	D3	M3	D4	M4	Gate
9	2+611.90	B-2	1.00	0.65	0.15	1.10	0.70	0.20	0.20	4.20	0.40	0.55	0.60						
12	3+813.81	B-2	0.80	0.60	0.15	0.80	0.50	0.15	0.15	2.00	0.40	0.55	0.60						

C Type

Section ①-①



Plan

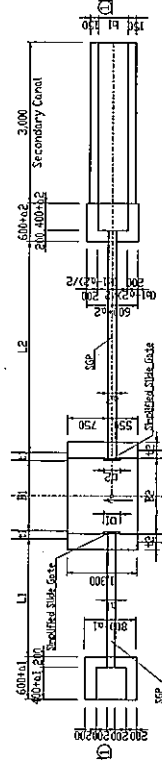


Dimension of Division Work (Type C)

No.	Station No.	Type	B1	H1	L1	B2	H2	L2	B3	H3	L3	B4	H4	L4	Gate
1	0+192.75	C	1.40	0.85	0.30	0.30	1.30	0.85	0.25	0.20	1.30	0.30	2.10	0.60	

D Type

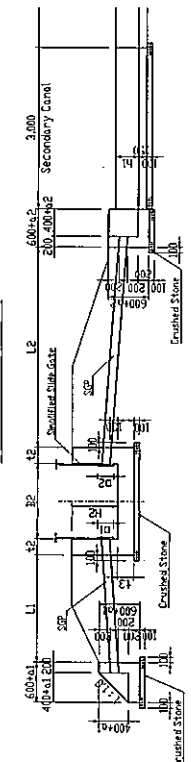
Plan



Dimension of Division Work (Type D)

No.	Station No.	Type	B1	H1	L1	B2	H2	L2	B3	H3	L3	B4	H4	L4	Gate
1	0+900.79	D	1.30	0.80	0.15	1.30	0.80	0.25	0.25	0.15	0.45	5.00	5.80	0.25	0.50

Section ①-①

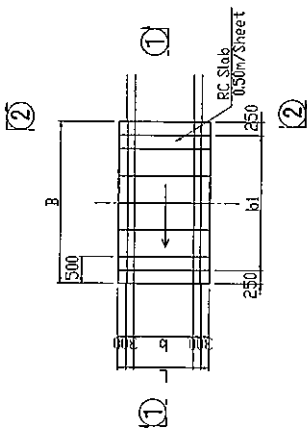


SOCIALIST REPUBLIC OF VIETNAM	
THE BASIC RESEARCH ON THE PROJECT FOR IMPROVEMENT OF RURAL LIVING CONDITIONS IN NAM DAN DISTRICT IN NGHIE AN PROVINCE IN SOCIALIST REPUBLIC OF VIETNAM	
DIVISION WORK (2/3)	
Nam Trung Canal	
Date	No.10
	1/100
JAPAN INTERNATIONAL COOPERATION AGENCY	

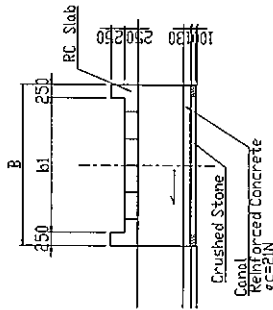
Crossing Road

Type 1

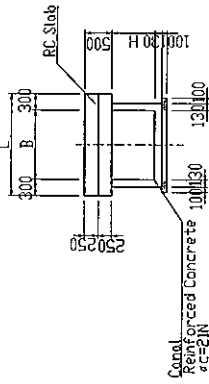
Plan



Section 1-1



Section 2-2



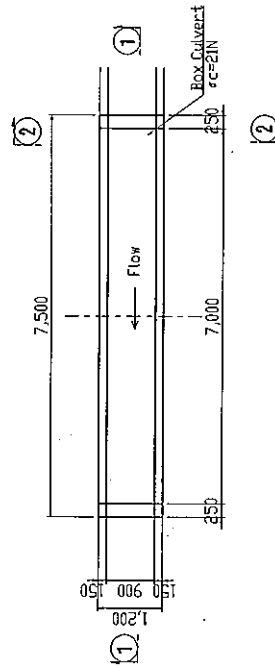
Dimension of Crossing Road (1)

No.	Station No.	Canal			RC Slab			Remarks
		h (cm)	B (cm)	L (cm)	B (cm)	L (cm)	L (cm)	
1	0 + 221.55	1.30	0.80	2.50	1.50	1.50		
2	0 + 421.33	1.30	0.80	2.50	1.50	1.50		
3	0 + 615.51	1.30	0.80	4.40	1.50	1.50		
4	0 + 911.77	1.30	0.80	3.30	1.50	1.50		
5	1 + 206.89	1.30	0.80	2.50	1.50	1.50		
6	1 + 448.55	1.30	0.80	2.50	1.50	1.50		
7	1 + 682.28	1.30	0.80	1.70	1.50	1.50	Step	
8	2 + 828.65	1.00	0.65	2.50	1.50	1.50		
9	3 + 071.65	0.90	0.60	1.70	1.50	1.50	Step	
10	3 + 305.15	0.90	0.60	2.10	1.50	1.50	Step	
11	3 + 538.15	0.90	0.60	2.10	1.50	1.50	Step	
12	3 + 800.85	0.90	0.60	2.50	1.50	1.50	Box Culvert	
13	4 + 124.79	0.80	0.45	2.50	1.40	1.40		
14	4 + 442.12	0.70	0.45	2.50	1.30	1.30		
15	4 + 708.30	0.50	0.35	2.40	1.10	1.10		

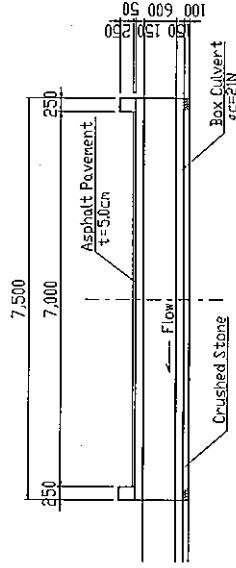
Type 2

No. 3+600.9

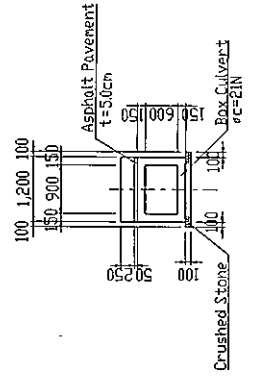
Plan



Section 1-1



Section 2-2



SOCIALIST REPUBLIC OF VIETNAM
THE BASIC DESIGN STUDY ON THE PROJECT
FOR THE CONSTRUCTION OF A CANAL IN
NAM BAN DISTRICT IN BIE AN PROVINCE IN SOCIALIST
REPUBLIC OF VIETNAM

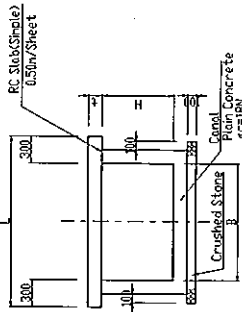
CROSSING ROAD
Nam Trung Canal

Date _____ No.12 1/100
JAPAN INTERNATIONAL COOPERATION AGENCY

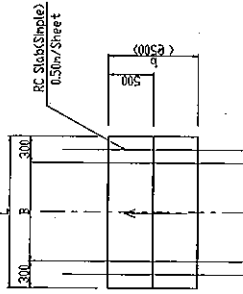
Gateway

S-1:60

Cross Section



Plan

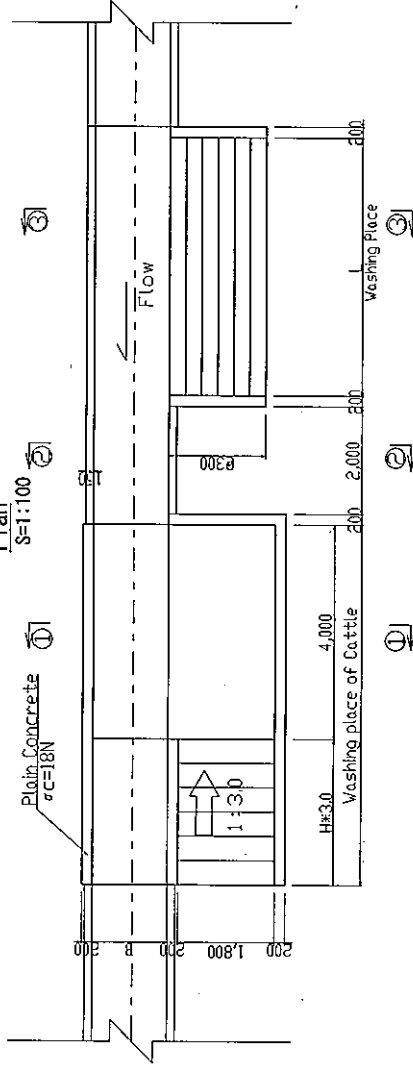


Dimension of Gateway

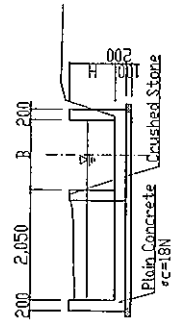
No.	Station No.	Distance (m)	Cant			Sloping			Remarks
			B (m)	H (m)	L (m)	i (%)	L (m)	X	
1	0 + 55.61	55.61	1.30	0.80	12.00	0.20	1.90	24	
2	0 + 71.41	71.41	1.30	0.80	2.00	0.15	1.90	4	
3	0 + 84.61	84.61	1.30	0.80	4.00	0.15	1.90	8	
4	0 + 96.10	96.10	1.30	0.80	2.50	0.15	1.90	5	
5	0 + 121.88	121.88	1.30	0.80	5.50	0.15	1.90	7	
6	0 + 145.68	145.68	1.30	0.80	1.50	0.15	1.90	3	
7	0 + 168.58	168.58	1.30	0.80	1.00	0.15	1.90	2	
8	0 + 241.35	241.35	1.30	0.80	5.00	0.20	1.90	30	
9	0 + 246.25	246.25	1.30	0.80	1.50	0.15	1.90	3	
10	0 + 250.45	250.45	1.30	0.80	1.50	0.15	1.90	3	
11	0 + 258.67	258.67	1.30	0.80	2.00	0.15	1.90	4	
12	0 + 270.05	270.05	1.30	0.80	1.50	0.15	1.90	3	
13	0 + 273.85	273.85	1.30	0.80	1.50	0.15	1.90	3	
14	0 + 288.75	288.75	1.30	0.80	1.50	0.15	1.90	3	
15	0 + 340.20	340.20	1.30	0.80	1.50	0.15	1.90	3	
16	0 + 350.10	350.10	1.30	0.80	1.50	0.15	1.90	3	
17	0 + 471.53	471.53	1.30	0.80	1.50	0.15	1.90	3	
18	0 + 507.28	507.28	1.30	0.80	1.50	0.15	1.90	3	
19	0 + 544.38	544.38	1.30	0.80	1.50	0.15	1.90	3	
20	0 + 578.18	578.18	1.30	0.80	1.50	0.15	1.90	3	

Washing Place

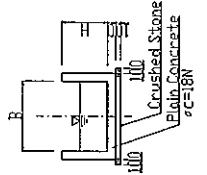
Plan S=1:100



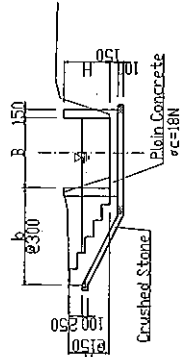
Section ①-①



Section ②-②



Section ③-③



Dimension of Washing Place

No.	Station No.	B (m)	H (m)	L (m)	L (m)	H (m)	Place	Remarks
1	0+210	1.30	0.80	5.00	0.80	1.80	① upper reaches	
2	0+620	1.30	0.80	5.00	0.80	1.80	② upper reaches	
3	1+200	1.30	0.80	5.00	0.80	1.80	③ upper reaches	
4	1+670	1.30	0.80	5.00	0.80	1.80	④ upper reaches	
5	1+855	1.30	0.80	5.00	0.80	1.80	⑤ upper reaches	
6	3+075	0.90	0.60	5.00	0.60	1.50	⑥ upper reaches	
7	3+420	0.80	0.50	5.00	0.50	1.20	⑦ upper reaches	

SOCIALIST REPUBLIC OF VIETNAM

THE BASIC DESIGN STUDY ON THE PROJECT FOR IMPROVING THE DRIVING CONDITION IN NAM DAN DISTRICT IN THE FRAMEWORK OF SOCIALIST REPUBLIC OF VIETNAM

GATEWAY / WASHING PLACE

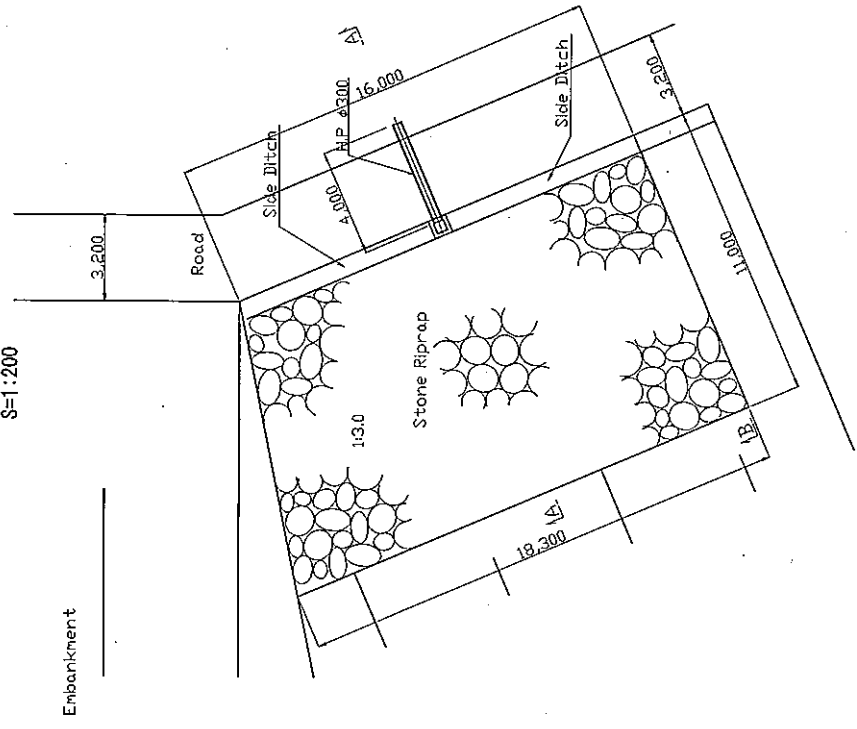
Nam Trung Canal

Date _____ No.13 1/80, 1/100

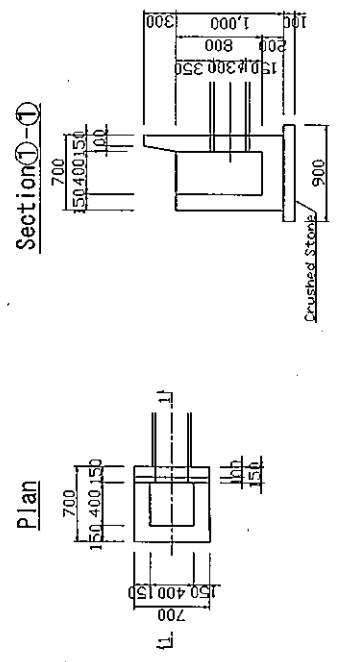
JAPAN INTERNATIONAL COOPERATION AGENCY

Repair of Embankment

General Plan
S=1:200

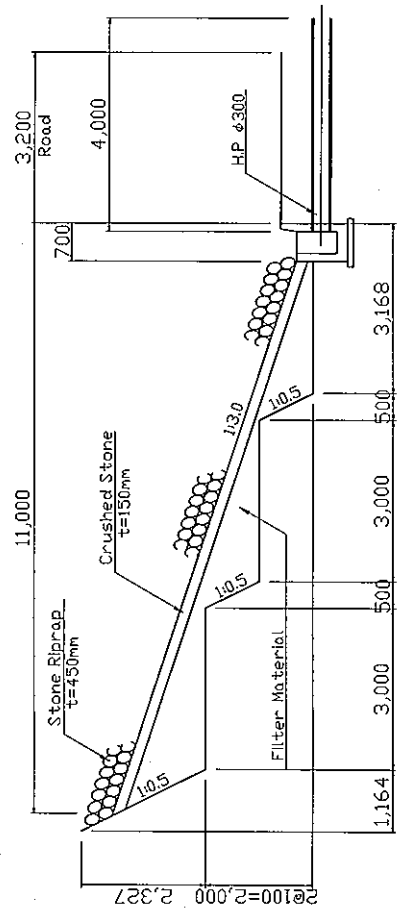


Detail of Gather water
S=1:50

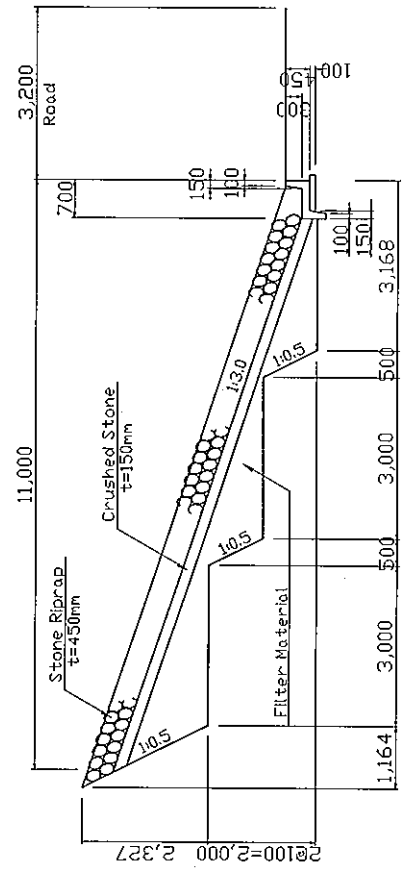


Section A-A
S=1:100

Section A-A
S=1:100



Section B-B
S=1:100

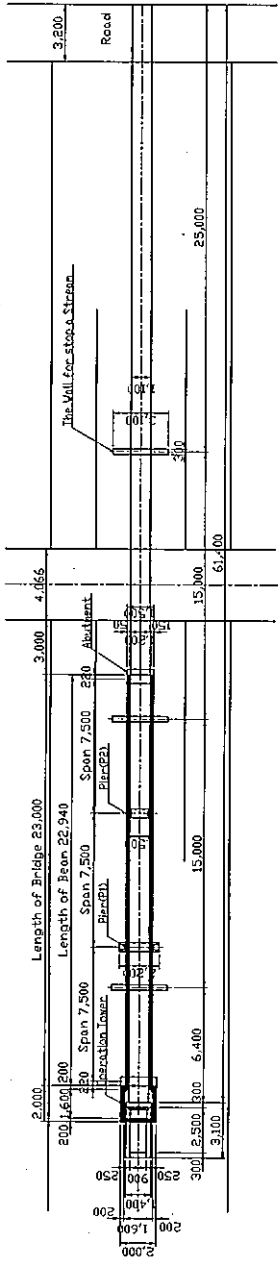


SOCIALIST REPUBLIC OF VIETNAM	
THE BASIC DESIGN STUDY ON THE PROJECT FOR IMPROVEMENT OF TURA LUNG COUCHAN IN NAM DAN DISTRICT IN NGHIE AN PROVINCE IN SOCIALIST REPUBLIC OF VIETNAM	
REPAIR OF EMBANKMENT	
Ho Thanh Canal	
Date	No.14
	1/50-1/100
	1/200
JAPAN INTERNATIONAL COOPERATION AGENCY	

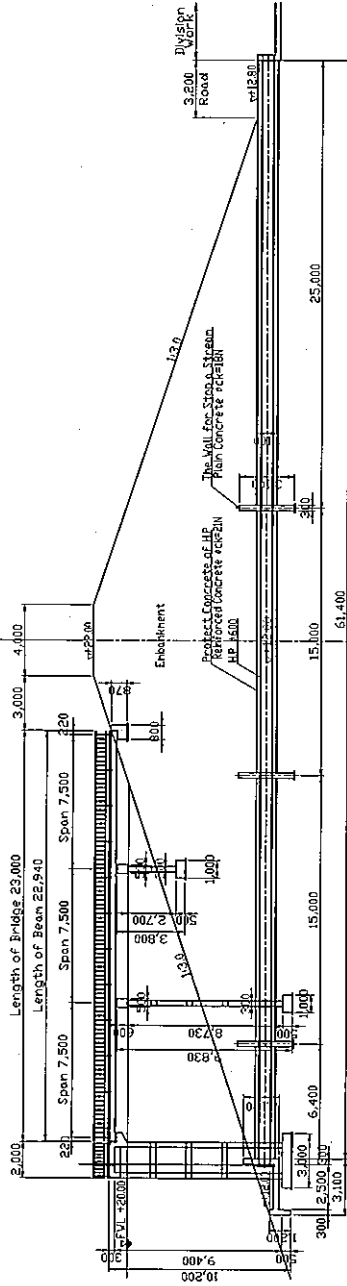
Repair of Intake

General Arrangement
S=1:300

Plan

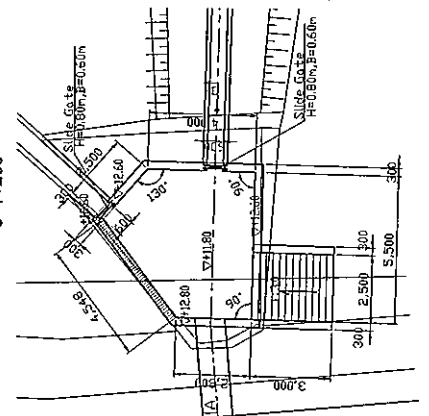


Long Section

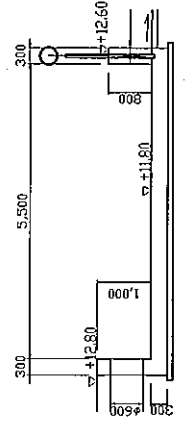


Division Tank
Outlet

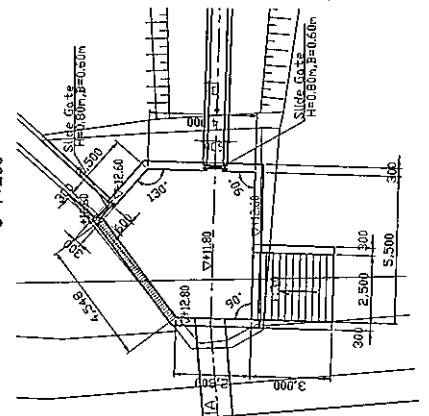
Slide Gate
S=1:100



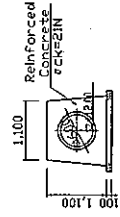
Section(A-A)
S=1:100



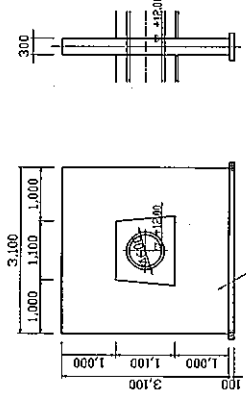
Plan
S=1:200



Pipe Culvert
S=1:100

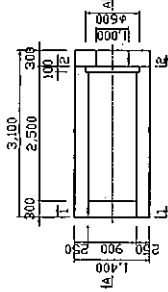


Protect Concrete
S=1:100

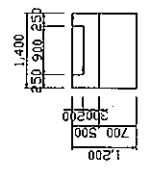


U-Wall
S=1:100

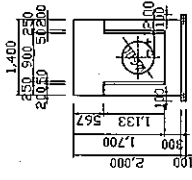
Section(1-1)



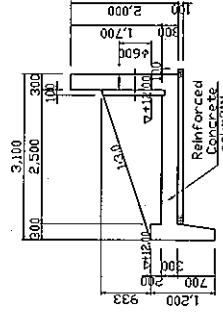
Plan



Section(2-2)

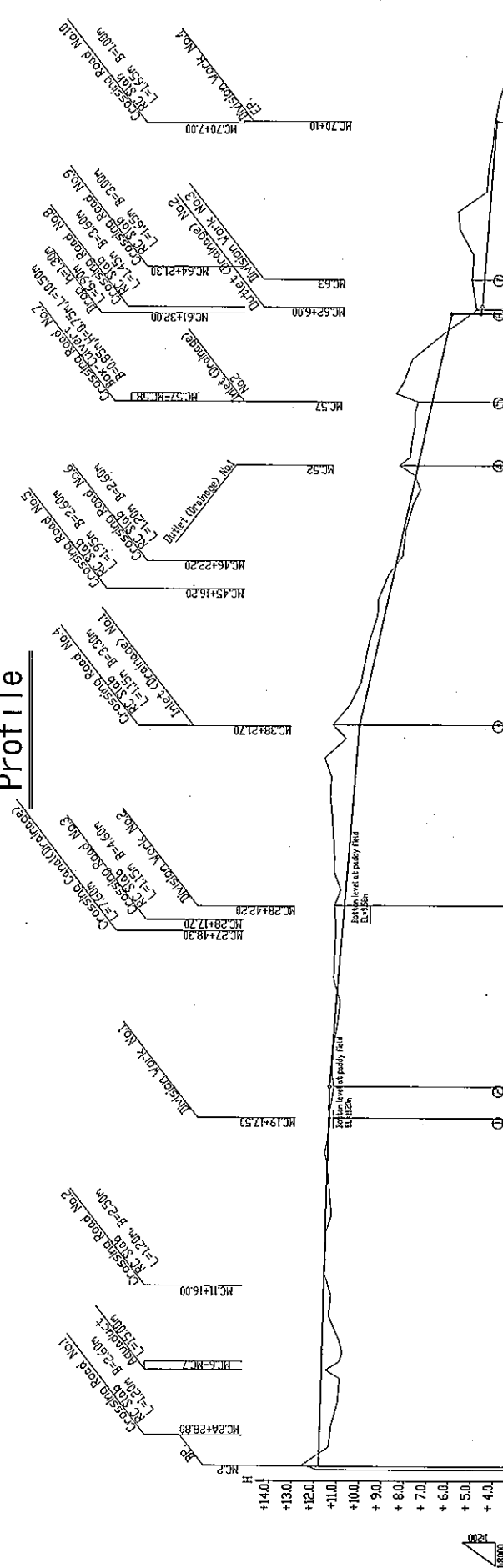


Section(A-A)



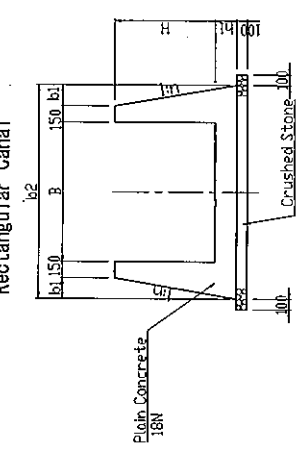
SOCIALIST REPUBLIC OF VIETNAM	
THE BASIC RESEARCH STUDY ON THE PROJECT FOR IMPROVEMENT OF RURAL ECONOMY IN NAM DAN DISTRICT IN NGHIE AN PROVINCE IN SOCIALIST REPUBLIC OF VIETNAM	
REPAIR OF INTAKE Ho Thanh Canal	
Date	No.15 1/100 - 1/300
JAPAN INTERNATIONAL COOPERATION AGENCY	

Profile



Incline	Station No.	Accumulated Distance	Structure	Drainage Discharge	Drainage Discharge	Drainage Discharge
11.800	MC2	7.0	Canal ① 30.50x40.40 L=6800m	0.077m ³ /s	0.064m ³ /s	0.058m ³ /s
11.376	MC19 630.5	687.0	Canal ② 30.45x40.35 L=646.00m	—	—	—
10.84	MC28 1011.0	1011.0	Canal ③ 30.35x40.35 L=465.00m	—	—	—
10.84	MC39 1333.0	1333.0	Canal ④ 30.35x40.35 L=465.00m	—	—	—
10.84	MC52 1798.0	1798.0	Canal ⑤ 30.35x40.35 L=465.00m	—	—	—
10.84	MC57 1912.0	1912.0	Canal ⑥ 30.35x40.35 L=465.00m	—	—	—
10.84	MC61 2069.0	2069.0	Canal ⑦ 30.35x40.35 L=465.00m	—	—	—
10.84	MC63 2129.0	2129.0	Canal ⑧ 30.35x40.35 L=465.00m	—	—	—
10.84	MC70 2433.0	2433.0	Canal ⑨ 30.35x40.35 L=465.00m	—	—	—

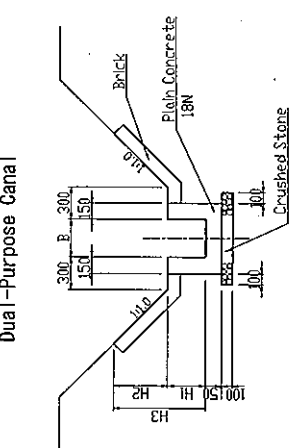
Typical Section (1) Rectangular Canal



Dimension

No Section	B	b1	B2	H	h1	n	Extension
1	100.0	100.0	100.0	100.0	100.0	0.15	684.0
2	100.0	100.0	100.0	100.0	100.0	0.15	646.0
3	100.0	100.0	100.0	100.0	100.0	0.15	465.0
4	100.0	100.0	100.0	100.0	100.0	0.15	465.0
5	100.0	100.0	100.0	100.0	100.0	0.15	465.0

Typical Section (2) Dual-Purpose Canal



Dimension

No Section	B	b1	B2	H	h1	n	Extension
1	300.0	100.0	100.0	18N	100.0	0.15	471.0m
2	300.0	100.0	100.0	18N	100.0	0.15	51.0m
3	300.0	100.0	100.0	18N	100.0	0.15	374.0m

Notes:
 *1: Expansion Joint(Exp. Jnt.) shall be installed 10m per 1 set.
 Exp. Jnt. is composed of elastic filler and water stop.
 *2: Meshed Wire shall be installed bottom of canal as prevention of cracking.

SOCIALIST REPUBLIC OF VIETNAM
 THE BASIC DESIGN STUDY ON THE PROJECT
 FOR THE REPAIR AND IMPROVEMENT OF CANALS IN
 HAM DAN DISTRICT IN NGHIE AN PROVINCE IN SOCIALIST
 REPUBLIC OF VIETNAM

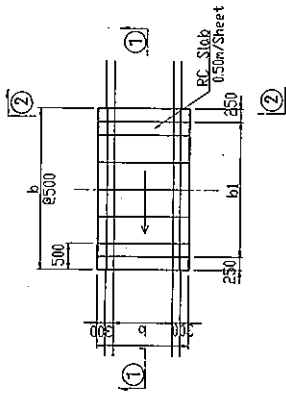
PROFILE
 Ho Thanh Canal

Date	No.17	H/S=1/70 V/S=1/8.000
JAPAN INTERNATIONAL COOPERATION AGENCY		

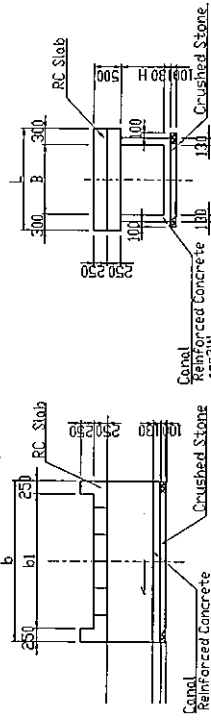
Crossing Road

Type 1

Plan

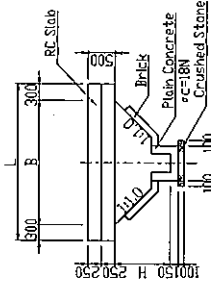


Section ①-①



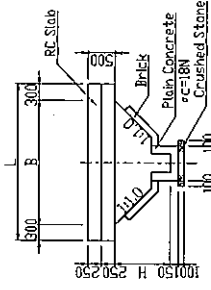
Section ②-②

Type 1-1



Section ②-②

Type 1-2



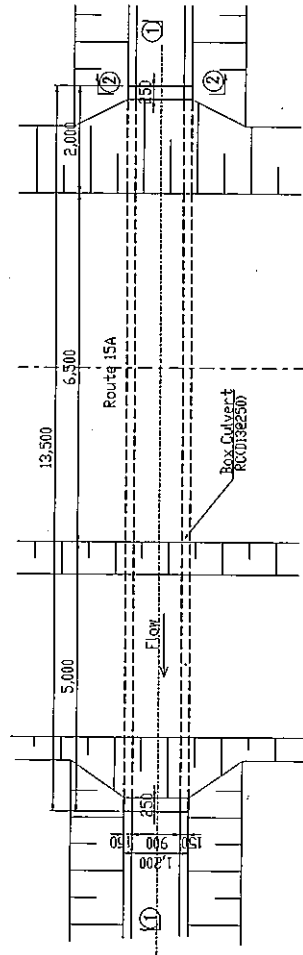
Dimension of Type 1

No.	Station No.	Type	Depth			RC Slab			Mets
			B	H	L	B	H	L	
1	KK.04+02.00	1-1	0.60	0.40	2.50	2.10	1.20		
2	KK.10+18.00	1-1	0.60	0.40	2.50	2.00	1.20		
3	KK.20+13.70	1-1	0.65	0.40	4.50	4.10	1.15		
4	KK.30+17.70	1-2	2.40	0.65	3.30	2.80	3.00		
5	KK.45+18.20	1-2	1.85	0.65	2.50	2.10	2.55		
6	KK.60+22.20	1-2	1.55	0.65	2.50	2.00	2.55		
7	KK.70+16.38	1-1	0.85	0.75	10.50			Bar Culvert	
8	KK.80+11.30	1-2	0.85	0.75	3.00	3.10	1.45		
9	KK.94+11.30	1-2	2.50	1.30	3.00	2.50	3.10		
10	KK.99+17.00	1-2	1.60	0.70	3.00	2.50	2.25		

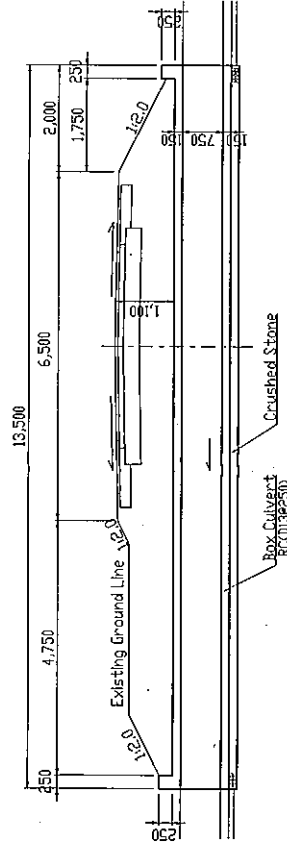
Type 2

MC.57

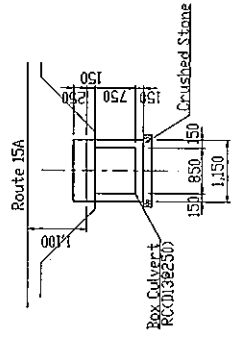
Plan



Section ①-①



Section ②-②



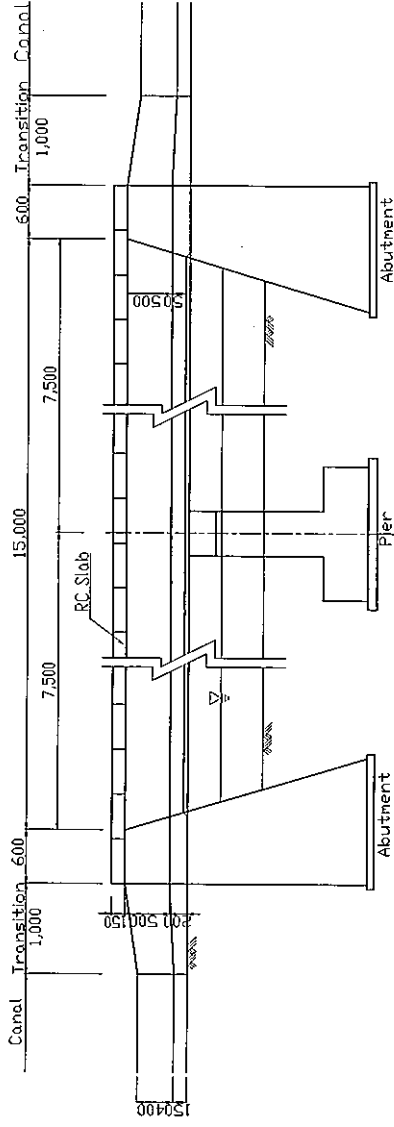
SOCIALIST REPUBLIC OF VIETNAM
 THE BASIC DESIGN STUDY ON THE PROJECT
 FOR THE CONSTRUCTION OF
 NAM DAN DISTRICT IN QUANG BINH PROVINCE IN SOCIALIST
 REPUBLIC OF VIETNAM

CROSSING ROAD
 Ho Thanh Canal

Date No.19 1/100
 JAPAN INTERNATIONAL COOPERATION AGENCY

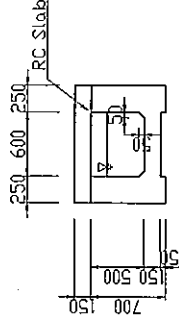
Aqueduct

Side View

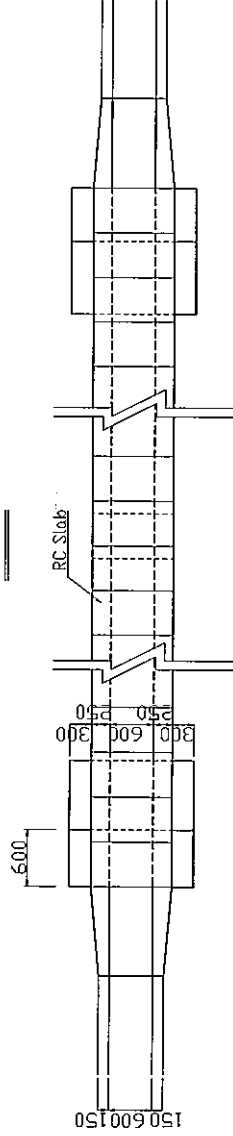


Cross Section

S=1:50

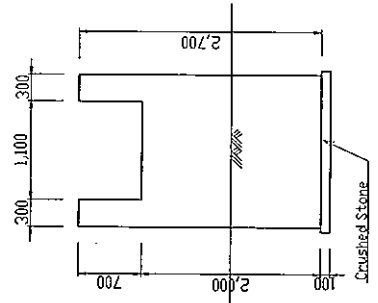


Plan

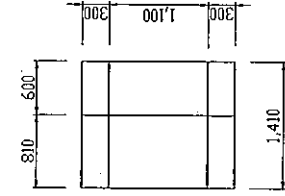


Abutment

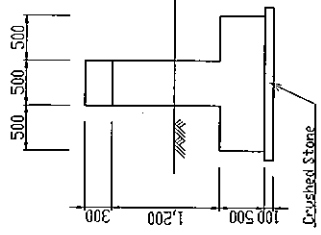
Front View



Plan

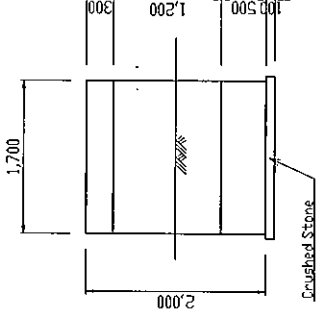


Side View

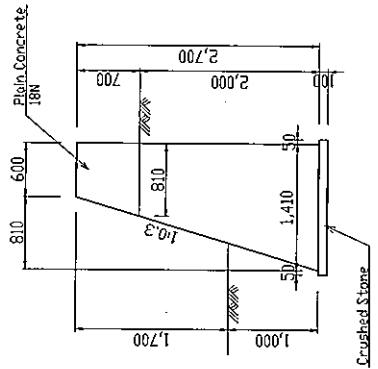


Pier

Front View



Side View

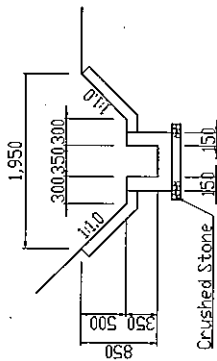


SOCIALIST REPUBLIC OF VIETNAM	
THE BASIC DESIGN STUDY ON THE PROJECT FOR IMPROVEMENT OF RURAL LIVING CONDITION IN NAM DAN DISTRICT, HUE PROVINCE IN SOCIALIST REPUBLIC OF VIETNAM	
AQUADUCT Ho Thanh Canal	
Date	No.20 1/80,1/50
JAPAN INTERNATIONAL COOPERATION AGENCY	

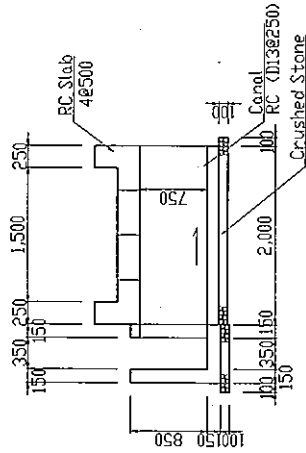
Outlet

No. 1 Outlet

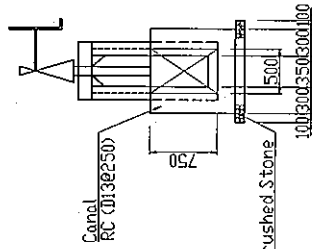
Section ①-①



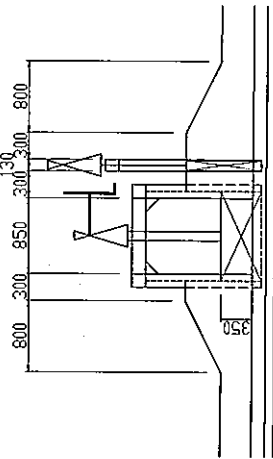
Section ②-②



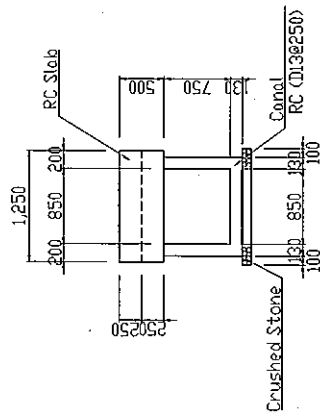
Section ③-③



Section ④-④

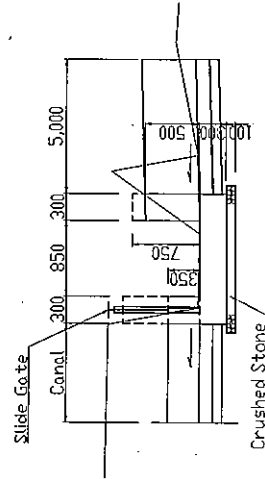


Section ⑤-⑤

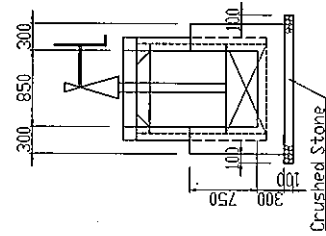


No. 2 Outlet

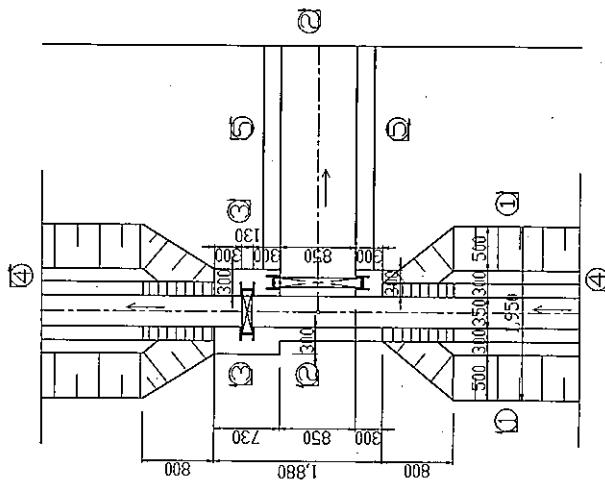
Section ①-①



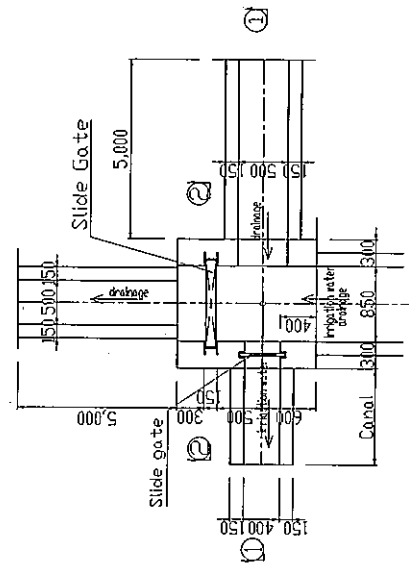
Section ②-②



Plan



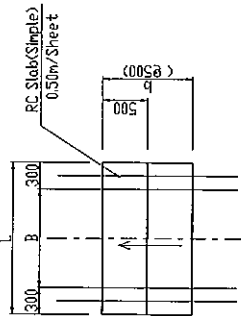
Plan



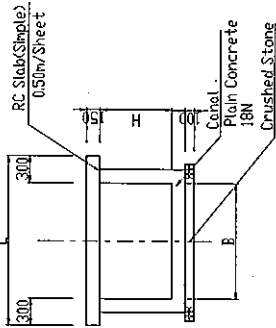
SOCIALIST REPUBLIC OF VIETNAM	
THE BASIC DESIGN STUDY ON THE PROJECT FOR IMPROVING THE CONDITION IN NAM DAN DISTRICT IN USHE AN PROVINCE IN SOCIALIST REPUBLIC OF VIETNAM	
OUTLET	
Ho Thanh Canal	
Date	No.21
	1/60
JAPAN INTERNATIONAL COOPERATION AGENCY	

Gateway

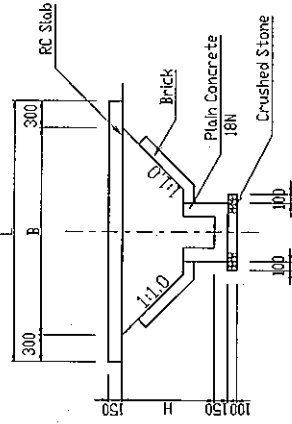
Plan



Cross Section Type-1

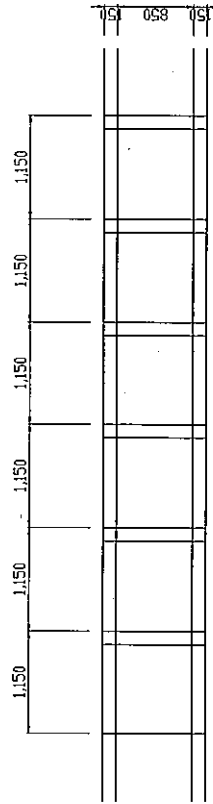


Cross Section Type-2

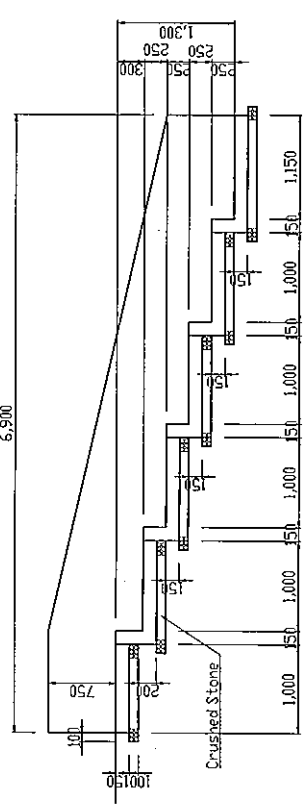


Drop Work

Step Style Plan



Long Section



Dimension of Gateway

No.	Station No.	Type	Elevation (m)	Cost			Remarks
				3.00	1.50	1.50	
1	1+00.00	1-1	24.00	0.60	0.60	2.00	0.15 1.20 4
2	1+10.00	1-1	24.75	0.60	0.60	2.00	0.15 1.20 4
3	1+20.00	1-1	25.50	0.60	0.60	2.00	0.15 1.20 4
4	1+30.00	1-1	26.25	0.60	0.60	2.00	0.15 1.20 4
5	1+40.00	1-1	27.00	0.60	0.60	2.00	0.15 1.20 4
6	1+50.00	1-1	27.75	0.60	0.60	2.00	0.15 1.20 4
7	1+60.00	1-1	28.50	0.60	0.60	2.00	0.15 1.20 4
8	1+70.00	1-1	29.25	0.60	0.60	2.00	0.15 1.20 4
9	1+80.00	1-1	30.00	0.60	0.60	2.00	0.15 1.20 4
10	1+90.00	1-1	30.75	0.60	0.60	2.00	0.15 1.20 4
11	2+00.00	1-1	31.50	0.60	0.60	2.00	0.15 1.20 4
12	2+10.00	1-1	32.25	0.60	0.60	2.00	0.15 1.20 4
13	2+20.00	1-1	33.00	0.60	0.60	2.00	0.15 1.20 4
14	2+30.00	1-1	33.75	0.60	0.60	2.00	0.15 1.20 4
15	2+40.00	1-1	34.50	0.60	0.60	2.00	0.15 1.20 4
16	2+50.00	1-1	35.25	0.60	0.60	2.00	0.15 1.20 4
17	2+60.00	1-1	36.00	0.60	0.60	2.00	0.15 1.20 4
18	2+70.00	1-1	36.75	0.60	0.60	2.00	0.15 1.20 4
19	2+80.00	1-1	37.50	0.60	0.60	2.00	0.15 1.20 4
20	2+90.00	1-1	38.25	0.60	0.60	2.00	0.15 1.20 4
21	3+00.00	1-1	39.00	0.60	0.60	2.00	0.15 1.20 4
22	3+10.00	1-1	39.75	0.60	0.60	2.00	0.15 1.20 4
23	3+20.00	1-1	40.50	0.60	0.60	2.00	0.15 1.20 4
24	3+30.00	1-1	41.25	0.60	0.60	2.00	0.15 1.20 4
25	3+40.00	1-1	42.00	0.60	0.60	2.00	0.15 1.20 4
26	3+50.00	1-1	42.75	0.60	0.60	2.00	0.15 1.20 4
27	3+60.00	1-1	43.50	0.60	0.60	2.00	0.15 1.20 4
28	3+70.00	1-1	44.25	0.60	0.60	2.00	0.15 1.20 4
29	3+80.00	1-1	45.00	0.60	0.60	2.00	0.15 1.20 4
30	3+90.00	1-1	45.75	0.60	0.60	2.00	0.15 1.20 4
31	4+00.00	1-1	46.50	0.60	0.60	2.00	0.15 1.20 4
32	4+10.00	1-1	47.25	0.60	0.60	2.00	0.15 1.20 4

SOCIALIST REPUBLIC OF VIETNAM
 THE BASIC DESIGN STUDY ON THE PROJECT
 FOR IMPROVEMENT OF RURAL HIGHWAY IN
 NAM DAN DISTRICT IN NGHIE AN PROVINCE IN SOCIALIST
 REPUBLIC OF VIETNAM

GATEWAY / DROP WORK
 Ho Thanh Canal

Date: No.22 1/80
 JAPAN INTERNATIONAL COOPERATION AGENCY