

Explanation of Hydrogeological Symbols

- Occurrence of Groundwater**
- Productive Fractured Aquifers (more than 100 liter/min)
 - Moderately Productive Fractured Aquifers (50 - 100 liter/min)
 - Limited Groundwater Resources (0 - 50 liter/min)

S Test Wells

Well No. / Location
Depth (m) / Screen Depth (m)
S.W.L. (m) / EC (uS/cm)
Drawdown (m) / Yield (liter/min)

- Yield (liter/min)**
- 0 - 50
 - # 50 - 100
 - # More than 100

- Depth to Water Table (m)
- EC (uS/cm)

- Geology**
- Highland Complex
 - Vijayan Complex

- Line Structures**
- Thrust
 - Shear Zone
 - Fault, Fracture
 - Lineaments by Landsat Image

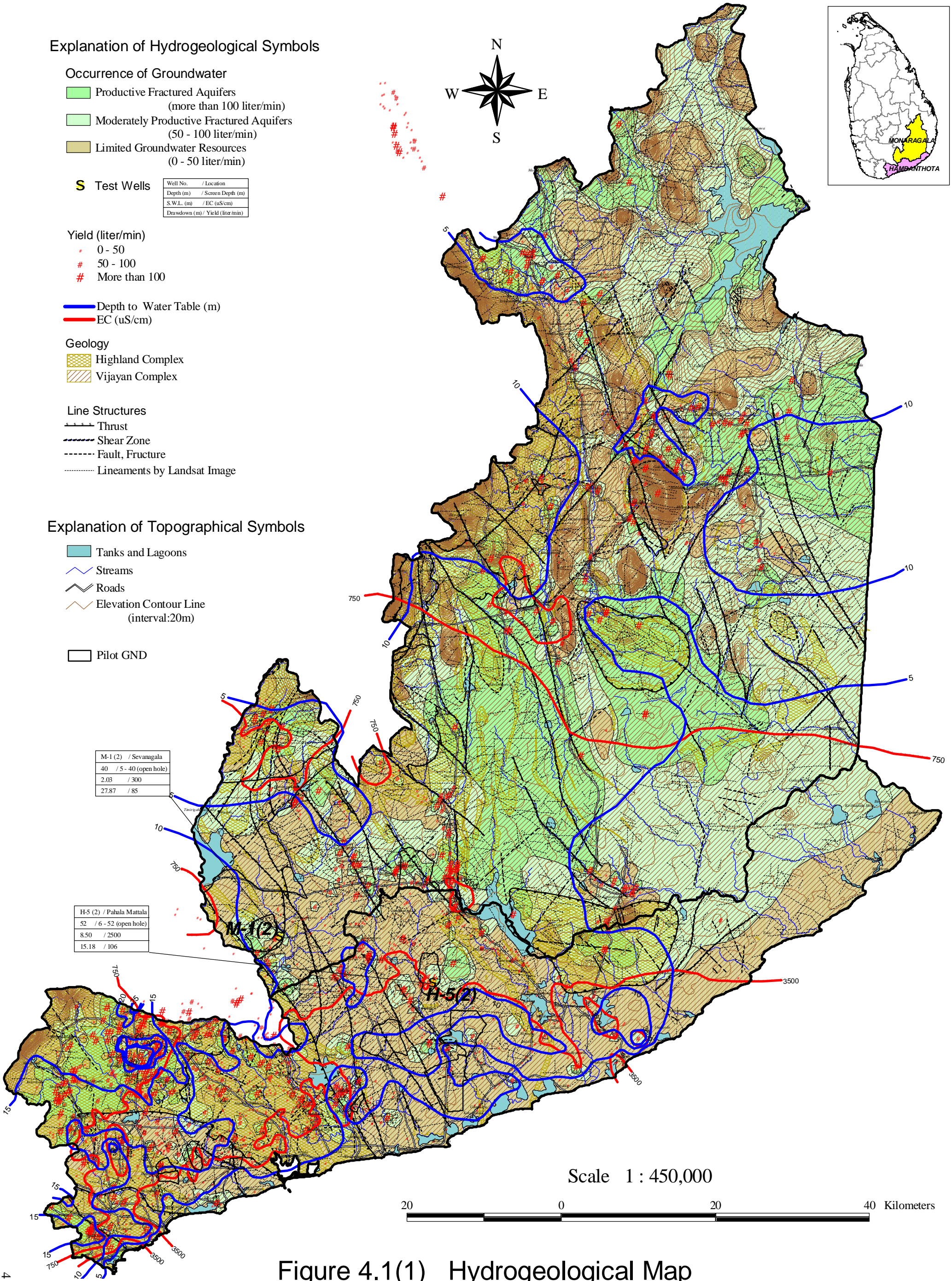
Explanation of Topographical Symbols

- Tanks and Lagoons
- ~ Streams
- ≡ Roads
- Elevation Contour Line (interval:20m)

 Pilot GND

M-1 (2) / Sevanagala	
40	/ 5 - 40 (open hole)
2.03	/ 300
27.87	/ 85

H-5 (2) / Pahala Mattala	
52	/ 6 - 52 (open hole)
8.50	/ 2500
15.18	/ 106



Scale 1 : 450,000



Figure 4.1(1) Hydrogeological Map
Upper Fractured Aquifer (shallower than 70m)