

5.3 取水可能量

5.3.1 パイロット GND の取水可能量

各パイロット GND の、格付評価と推定開発可能量を表 5.2 に示した。

表 5.2 パイロット GND の格付評価と推定開発可能量

	Deeper (100-200m)					Lower (70-100m)					Upper (0-70m)					Exploitable Aquifer / Yield expected		
	T	Q/s	Q	Rated Level	litres/min	T	Q/s	Q	Rated Level	litres/min	T	Q/s	Q	Rated Level	litres/min	(Well Depth)	(litres/min)	Q (m3/h)
M1	Moderately Fair					C					M. Fair - Fair					Upper(70m) < 100 < 6		
M2	P	---	---	C	---	G	G	G	A	440	F --- --- C ---					Lower (100m)	440	26.4
M3	Fair					B					Fair					Upper-Lower(100m) < 100 < 6		
M4	Fair - Good					B					M. Fair - Fair					Upper-Lower(100m) < 100 < 6		
M5	P	F	F	C	73	G	G	G	A	610	F G- P C 35					Lower (100m)	35	36.6
M6	*			*	*	G	G	G	A	950	F --- --- C ---					Lower (100m)	950	57
M7	P	---	---	C	---	---	---	---	C	---	F G- F B 85					Upper (70m)	85	5.1
H1	P	---	---	Imperceptible		---	---	---	Imperceptible		F F P C 12					Upper	Poor	
H2	Moderately Fair					C					G- F P C 20					Lower (100m)	< 50	< 3
H3	G	G	G	A	415	---	---	---	C		Poor - M.Fair C ---					Deeper (200m)	415	24.9
H4	P	---	---	C	---	---	---	---	C		P P P C 1.9					Poor - Imperceptible		
H5	*			*	*	G	G	G	A	432	F F P C 3.5					Lower (100m)	3.5	25.92
H6	P	F	F	C	50	---	---	---	?	---	G G G A 106					Upper (70m)	106	6.36
H7	P	---	---	C	---	---	---	---	C		F F P C 3					Poor		
H8	Good					B					Poor					Lower-Deeper (200m) < 100 < 6		

G: Good F: Fair P: Poor A blank column: Constant discharge test could not be continued for 720 min. *: The well was not drilled up to the deeper aquifer.

5.3.2 地下水開発有望地域の評価

上部帯水層と下部/深部帯水層の有望地域を、図 5.2 に示した。地域の地下水資源評価分類は、表 5.3 のとおりである。

表 5.3 地下水資源評価の分類

Area	Point (Upper)	Points (Lower/Deeper)	Promising Aquifer	Well Depth	EC	Expected Yield
VGvg	6	6	Upper/Lower/Deeper	70 (or 100~200)	-750	100 <
VG	6	< 6	Upper	70	-750	100 <
vg	< 6	6	Lower/Deeper	100~200	-750	100 <
G1g1	4	4	Upper/Lower/Deeper	70 (or 100~200)	-750	50-100
G1	4	< 4	Upper	70	-750	50-100
g1	< 4	4	Lower/Deeper	100~200	-750	50-100
G2g2	3	3	Upper/Lower/Deeper	70 (or 100~200)	750-3500	100 <
G2	3	< 3	Upper	70	750-3500	100 <
g2	< 3	3	Lower/Deeper	100~200	750-3500	100 <

Capital letter means the evaluation of the upper aquifer, for example VG is Very Good of the upper aquifer and vg is Very Good of the lower/deeper aquifer.

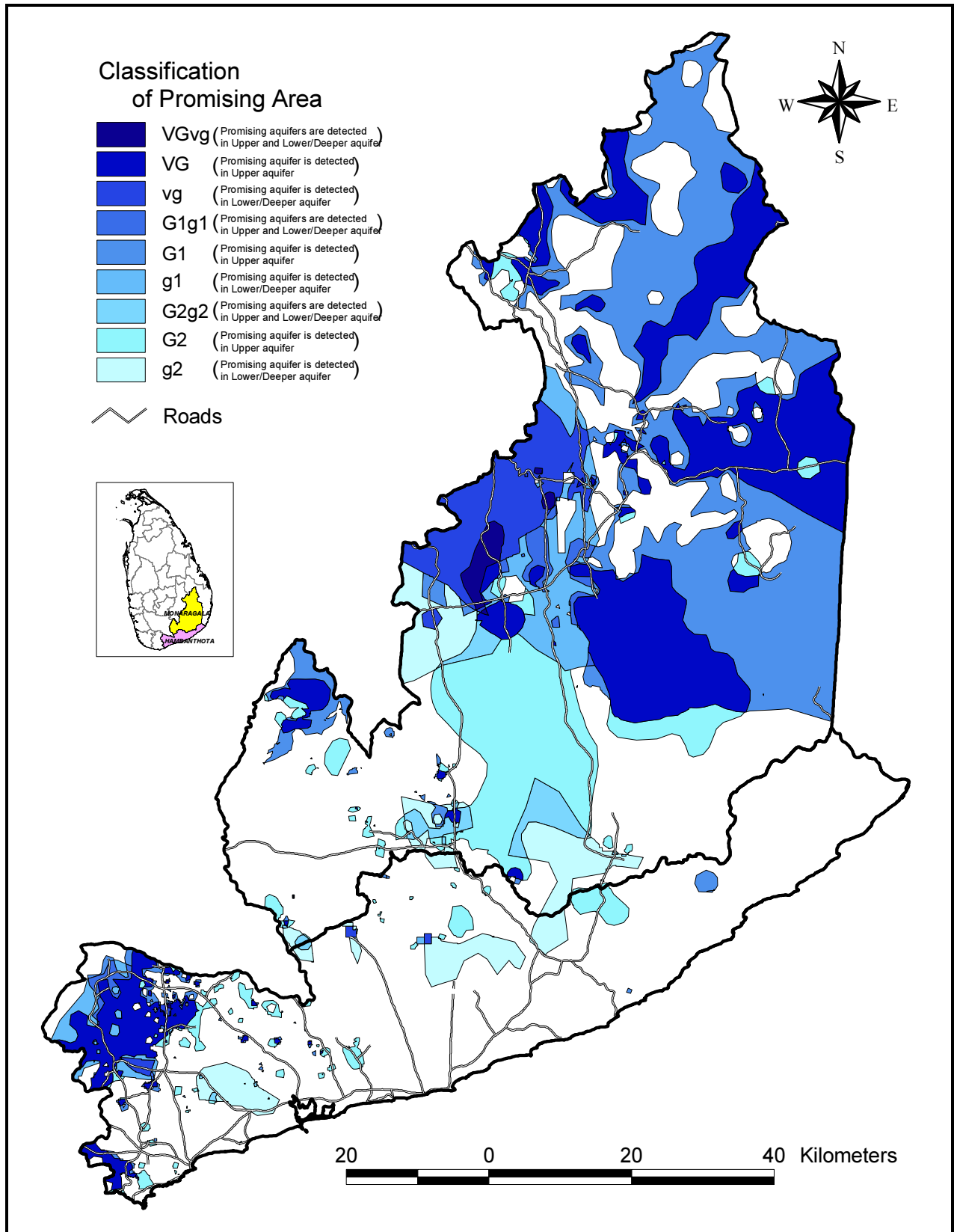


図 5.2 地下水資源開発有望地域