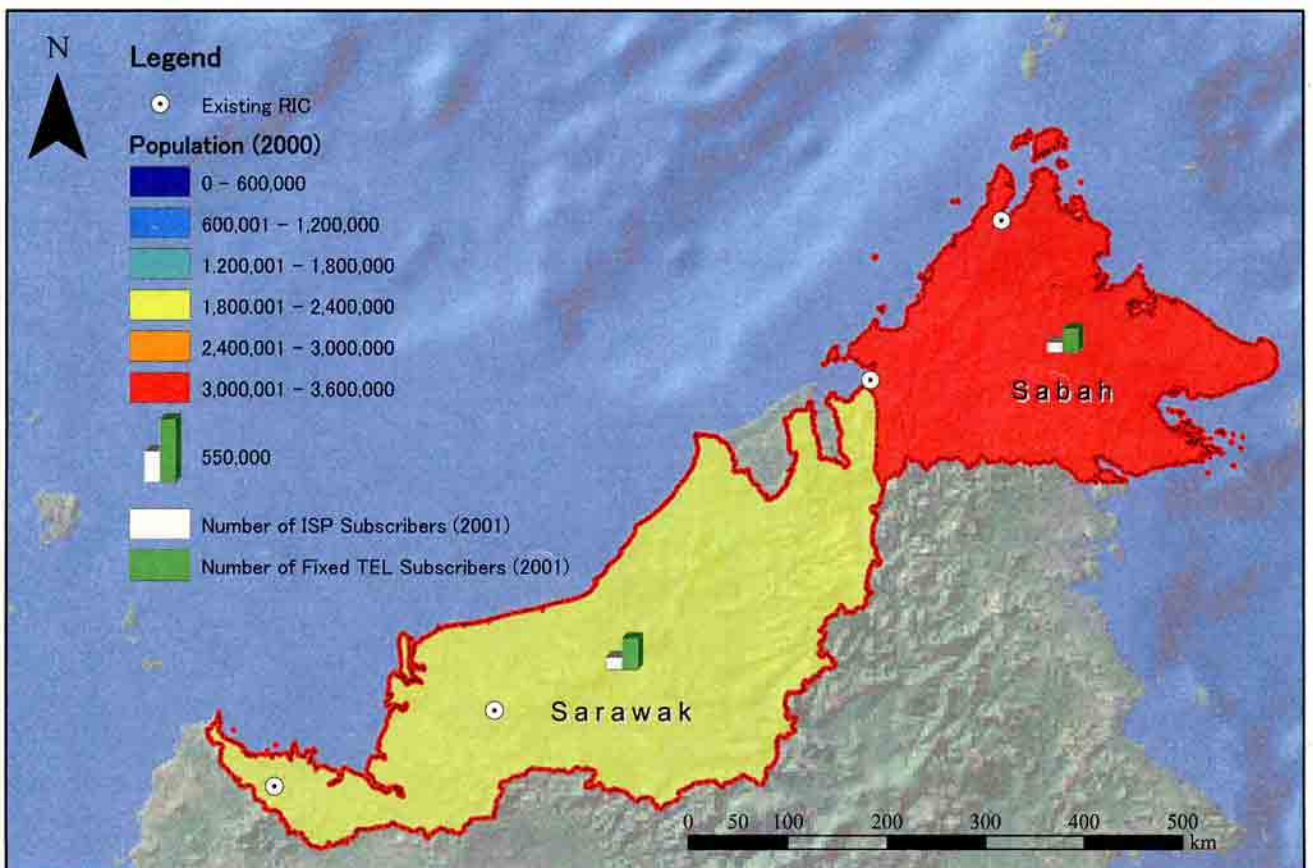
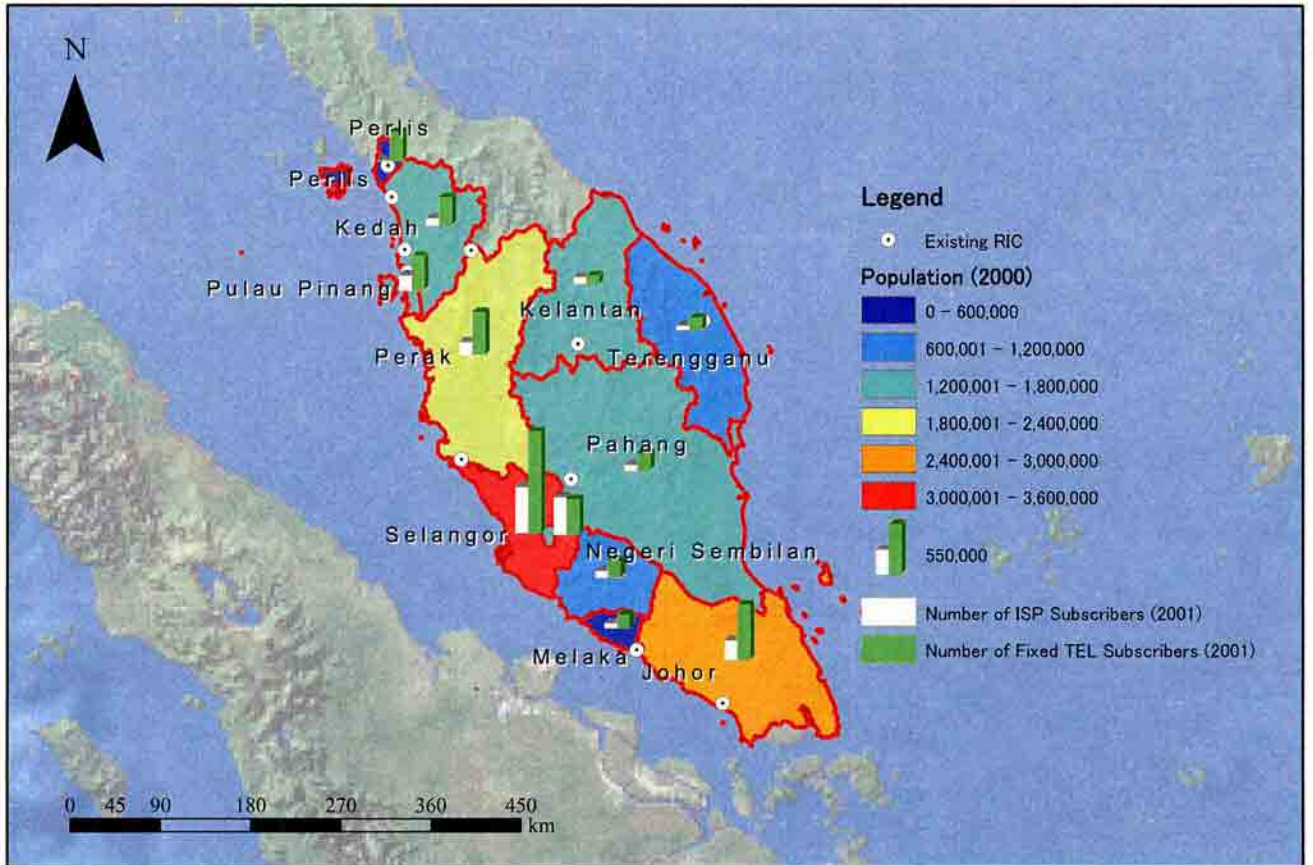


*APPENDIX D :*

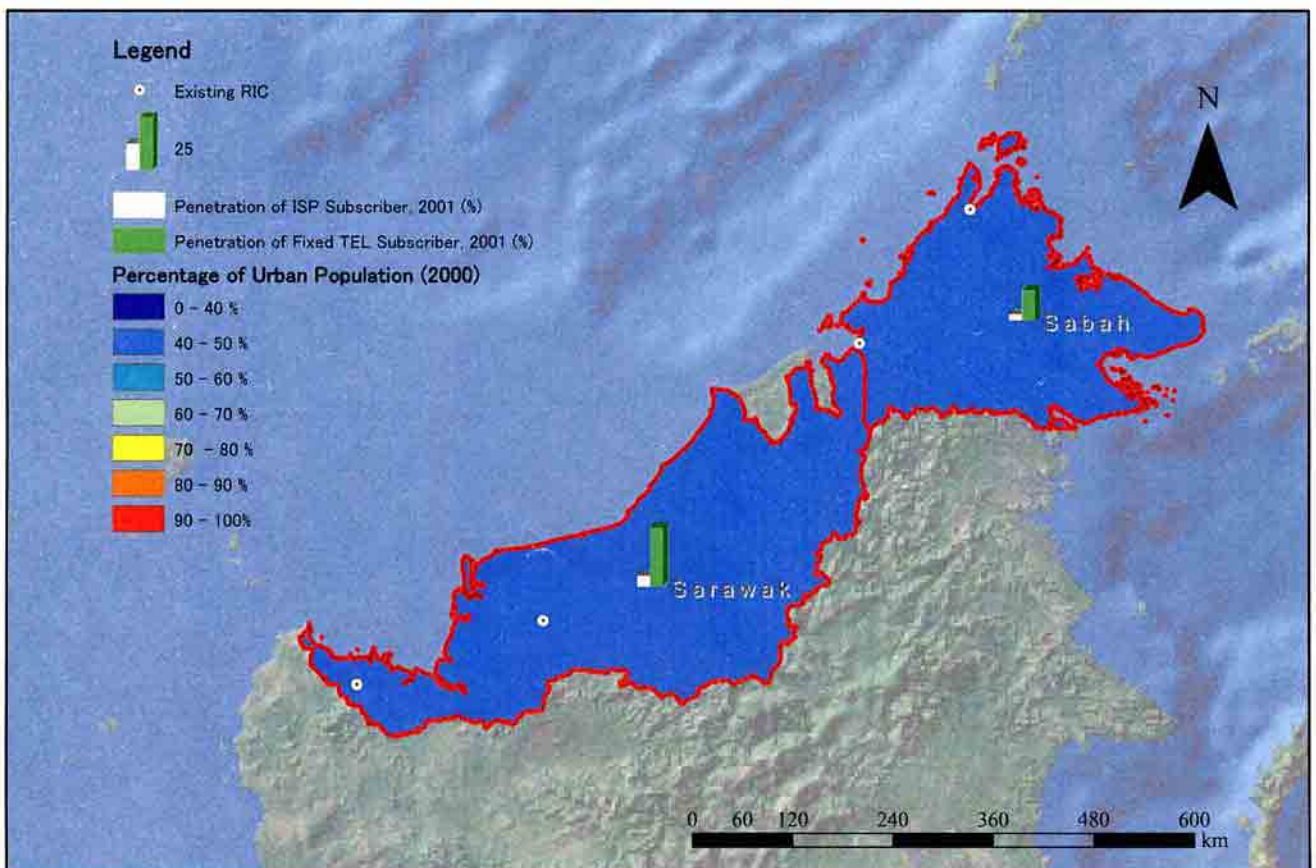
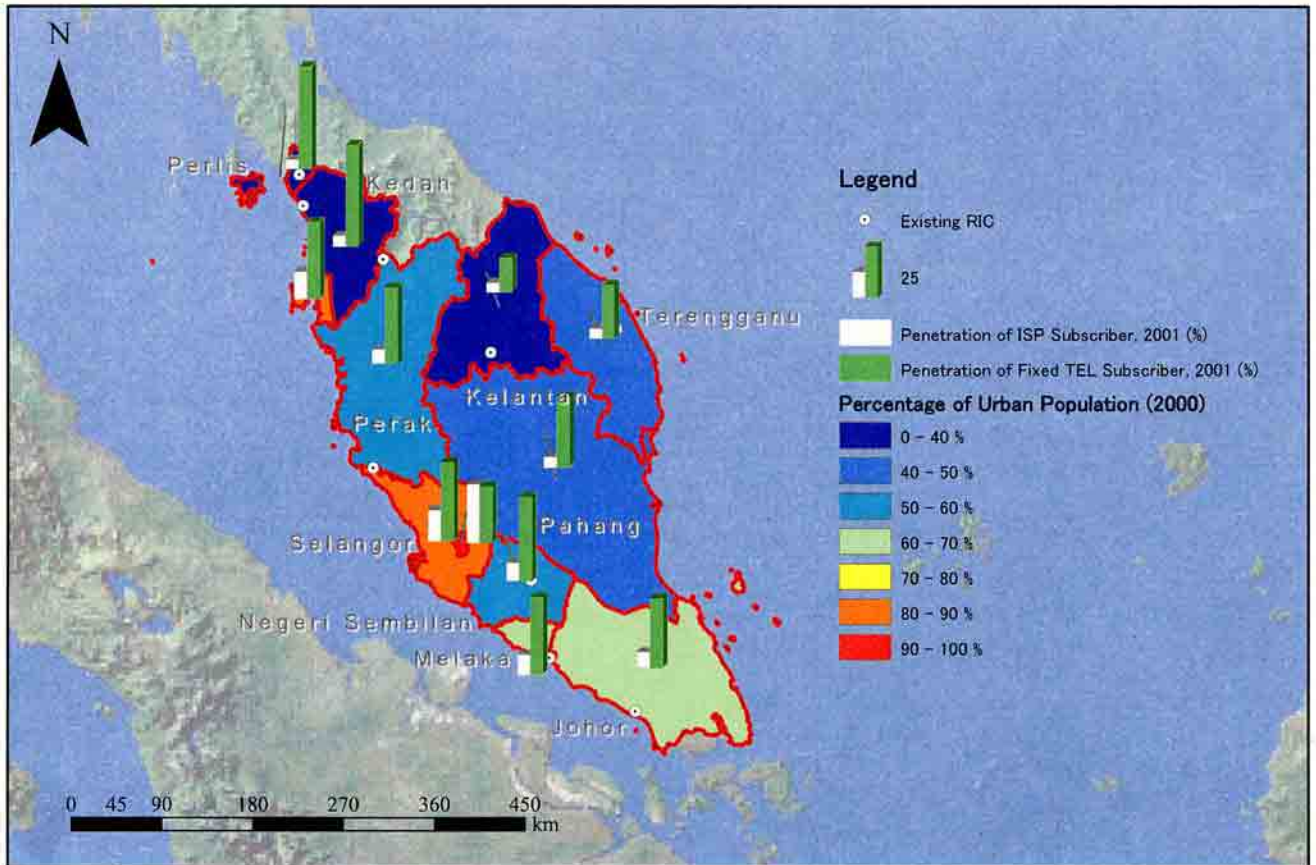
*GIS MAPS*

APPENDIX D GIS MAPS



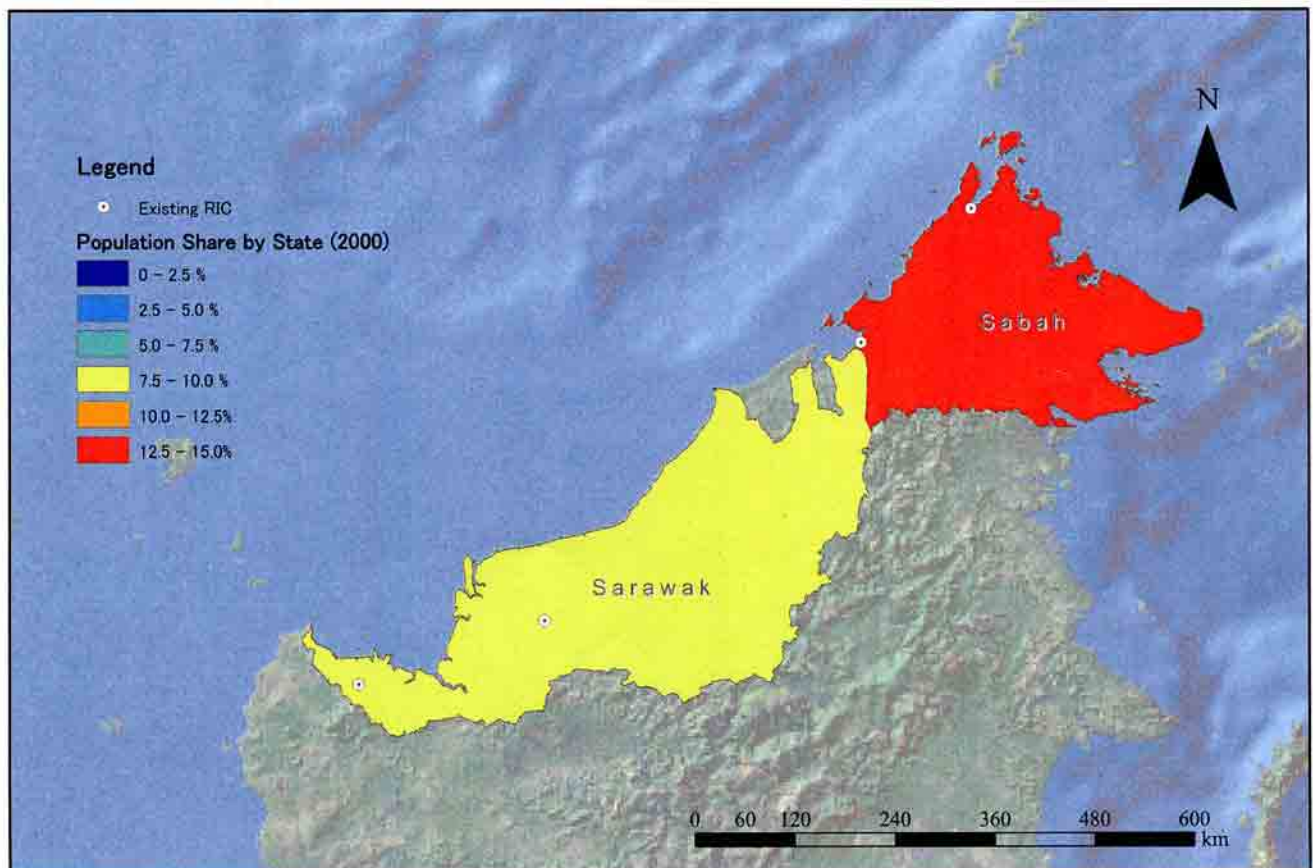
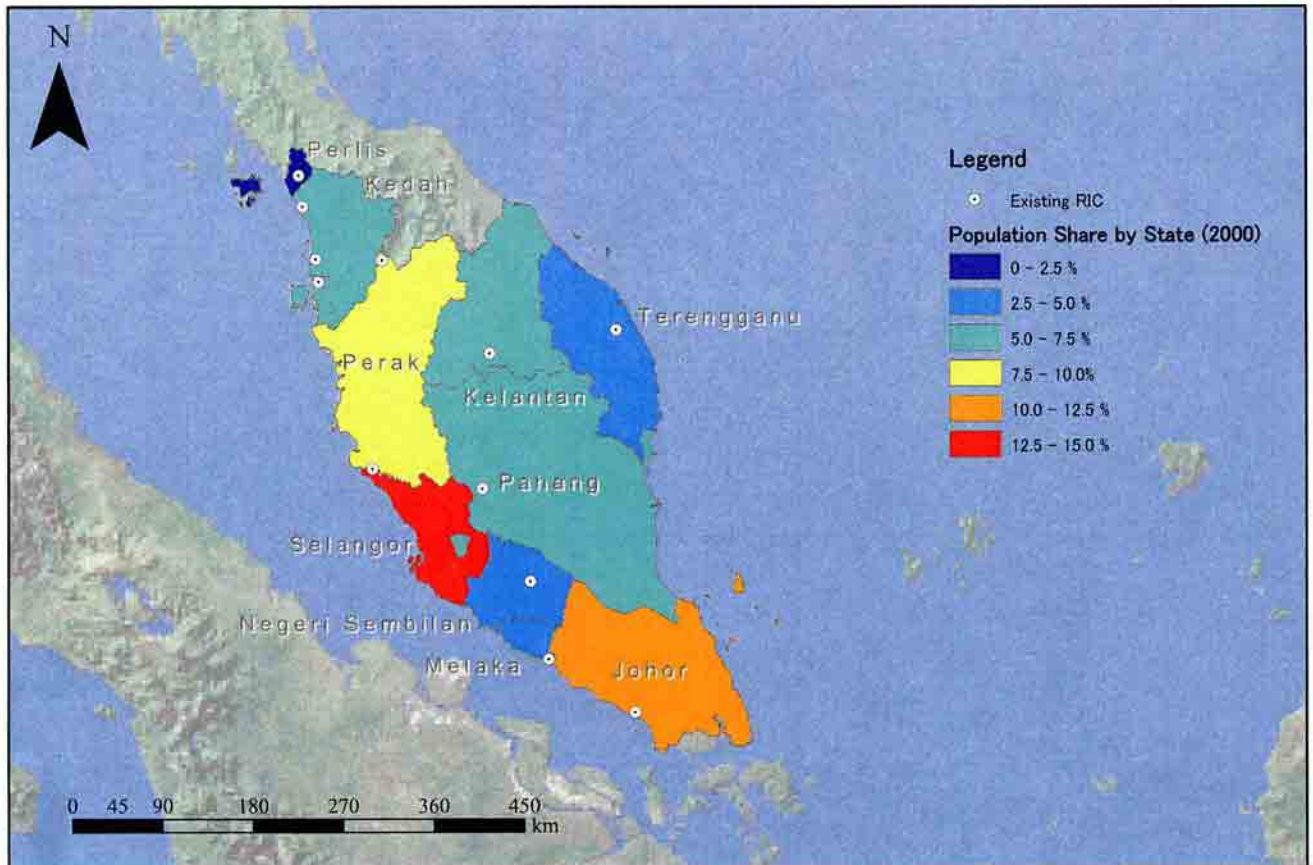
Number of "IT" Service Subscribers and Population by State (2000-2001)



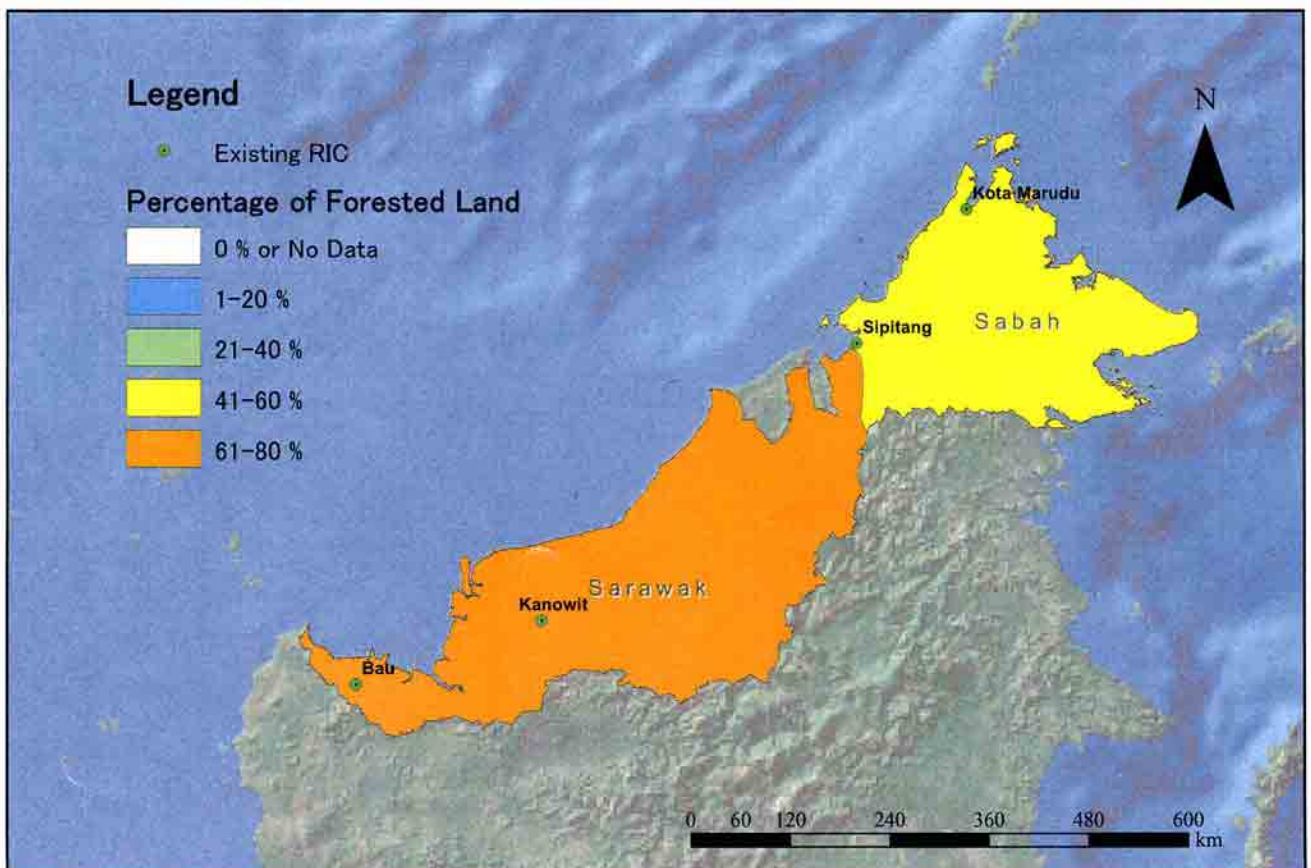
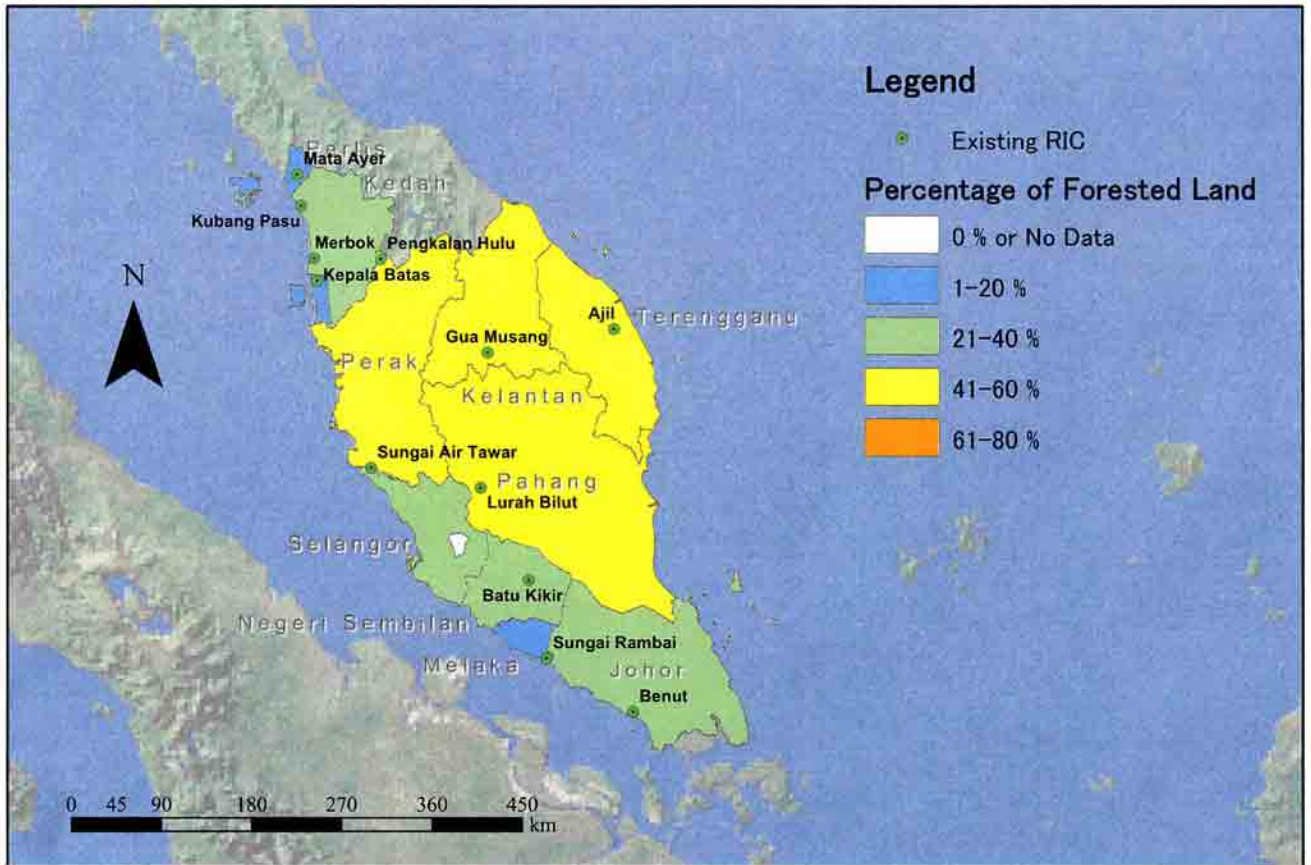


"IT" Penetration and Urban Population Ratio by State (2000-2001)



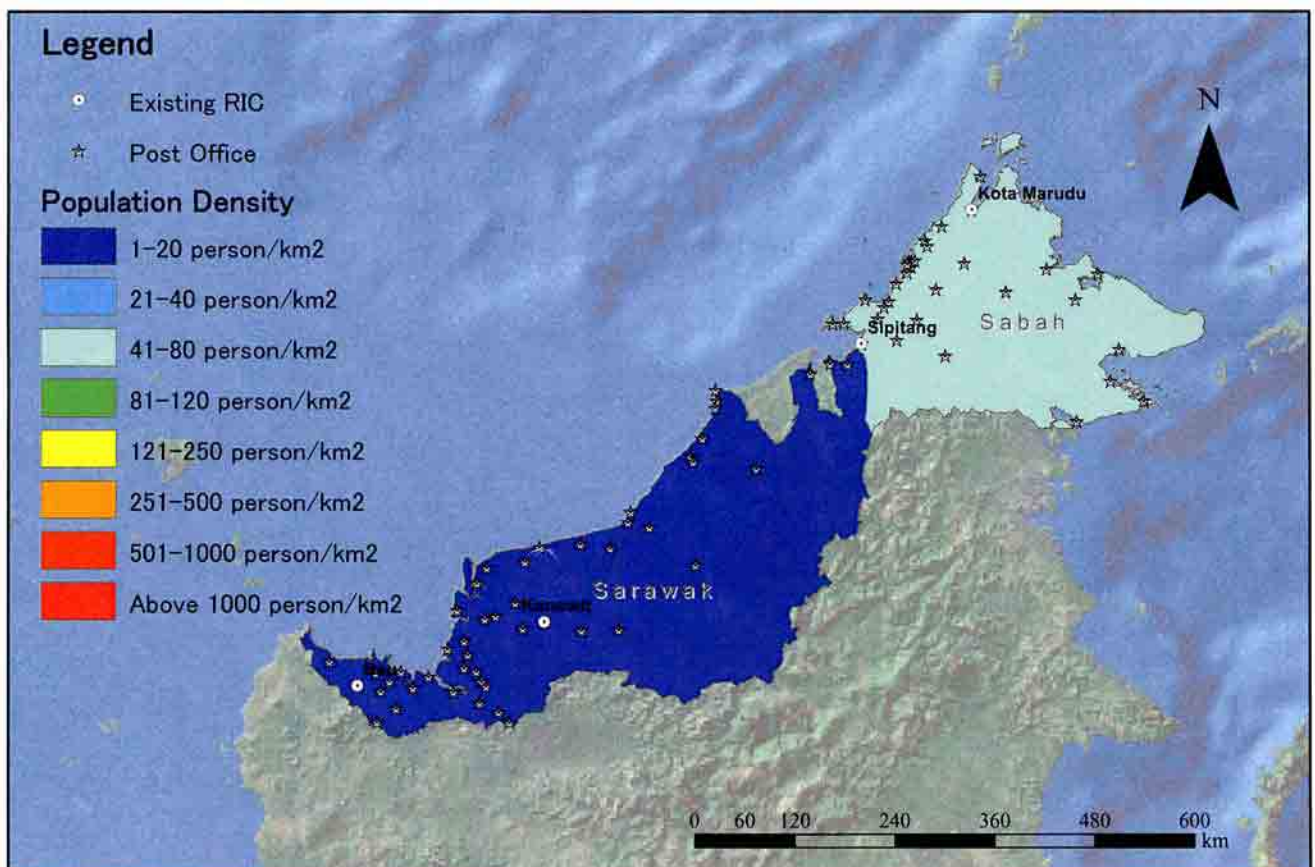
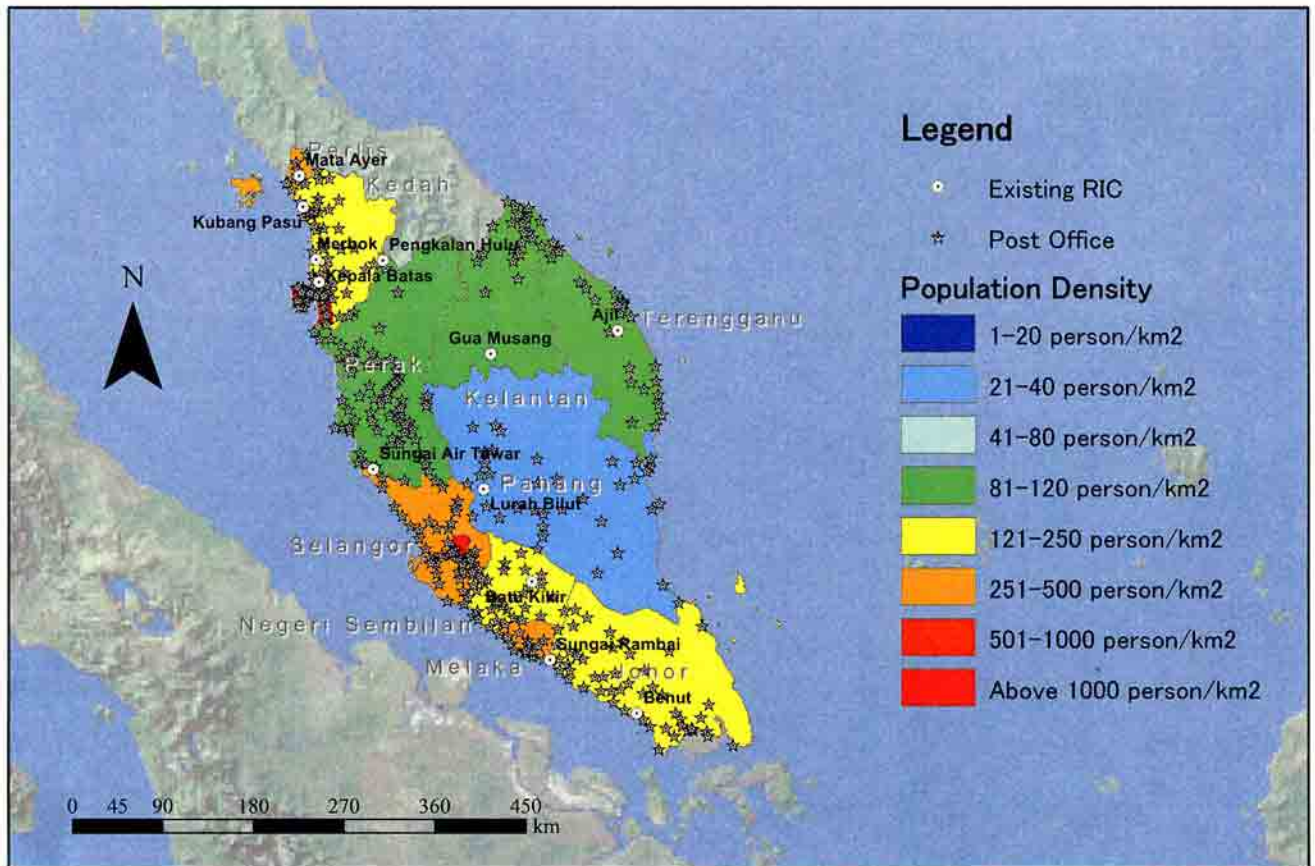


Population Share by State (2000)



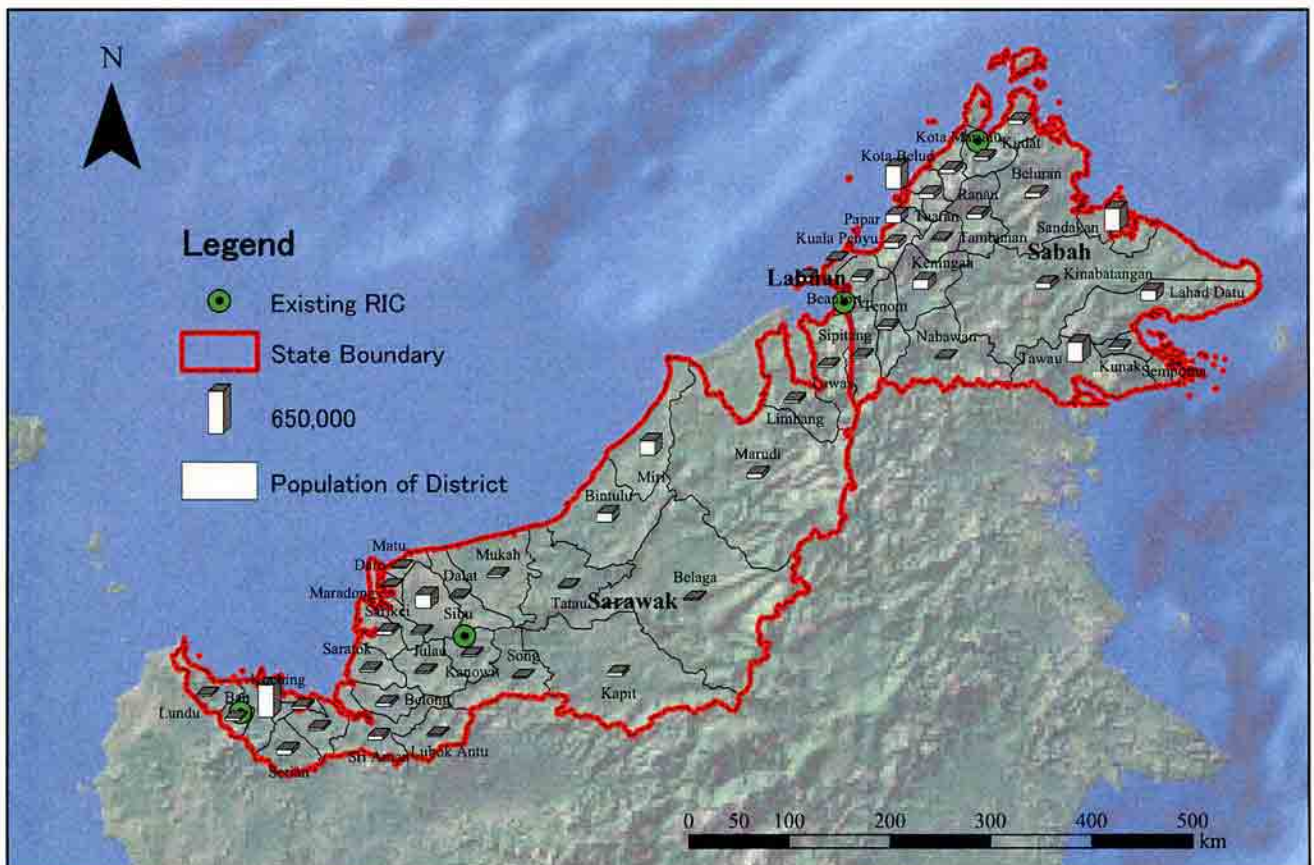
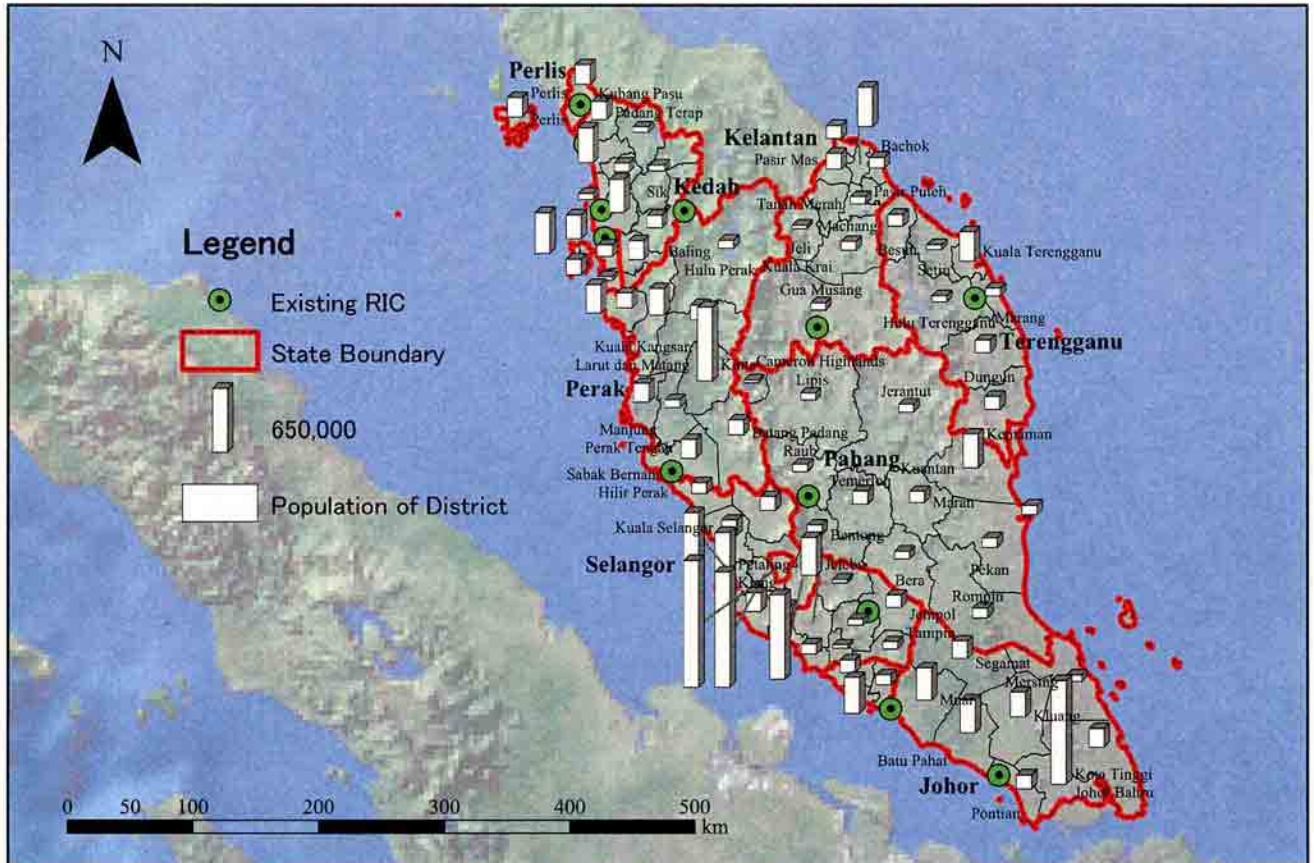
Percentage of Forested Land Area (1999)





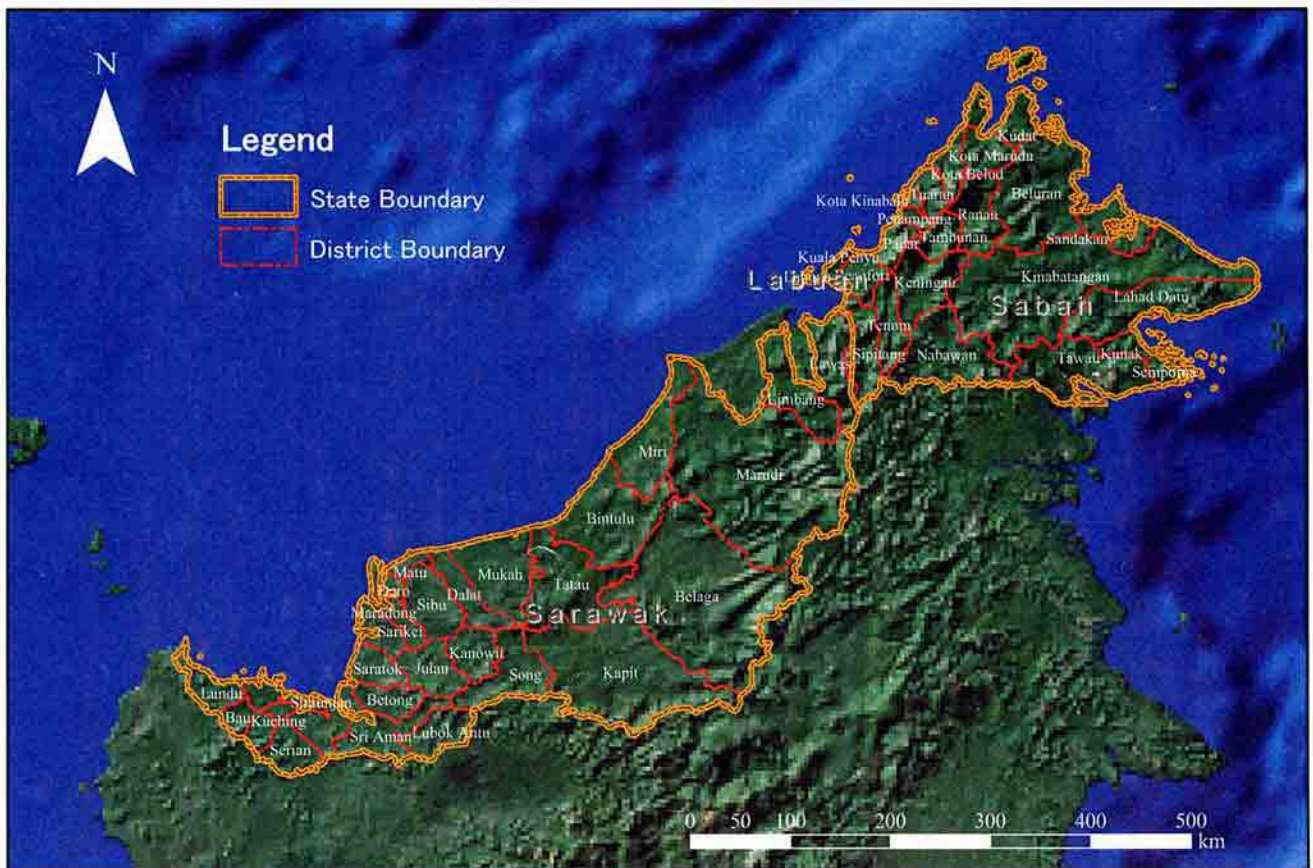
Population Density by State (2000)





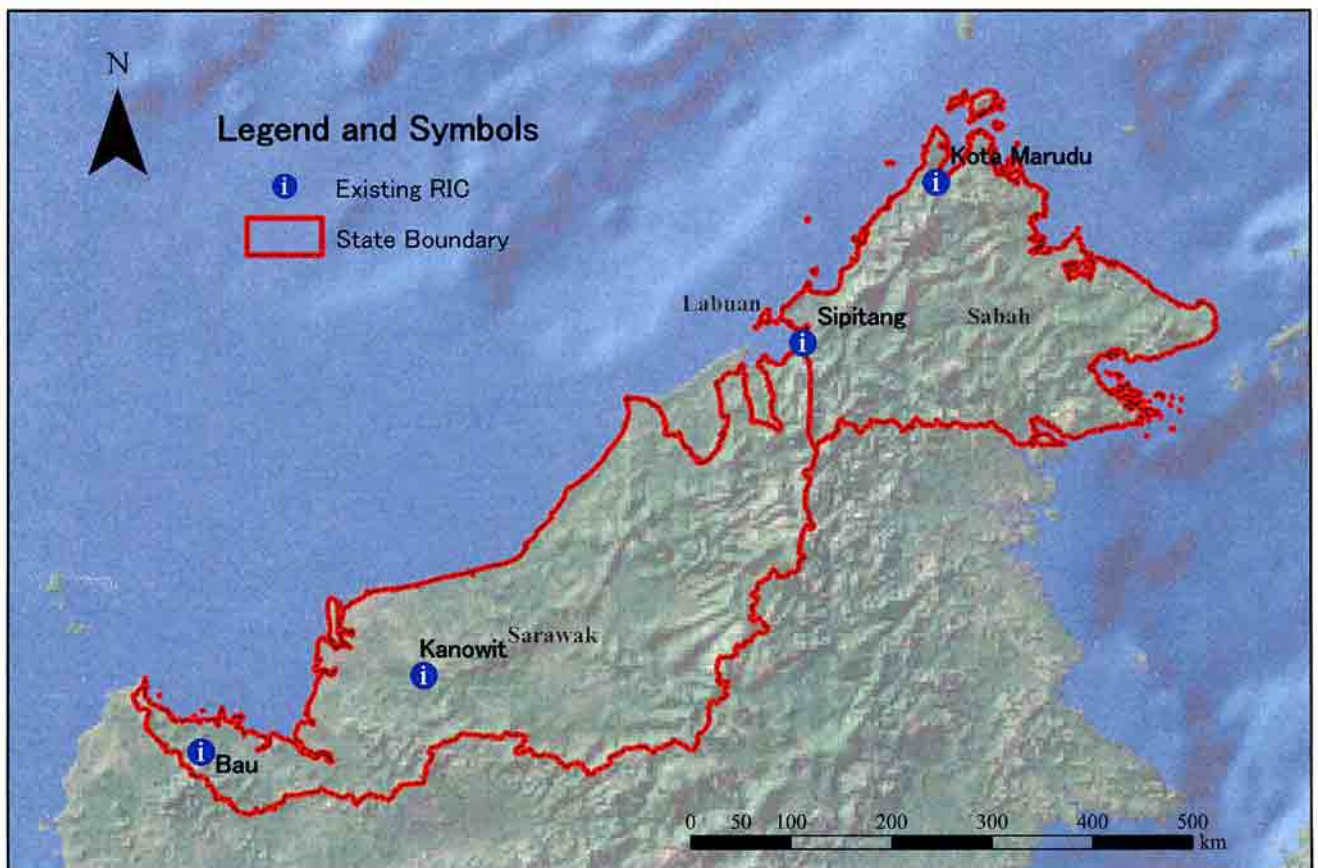
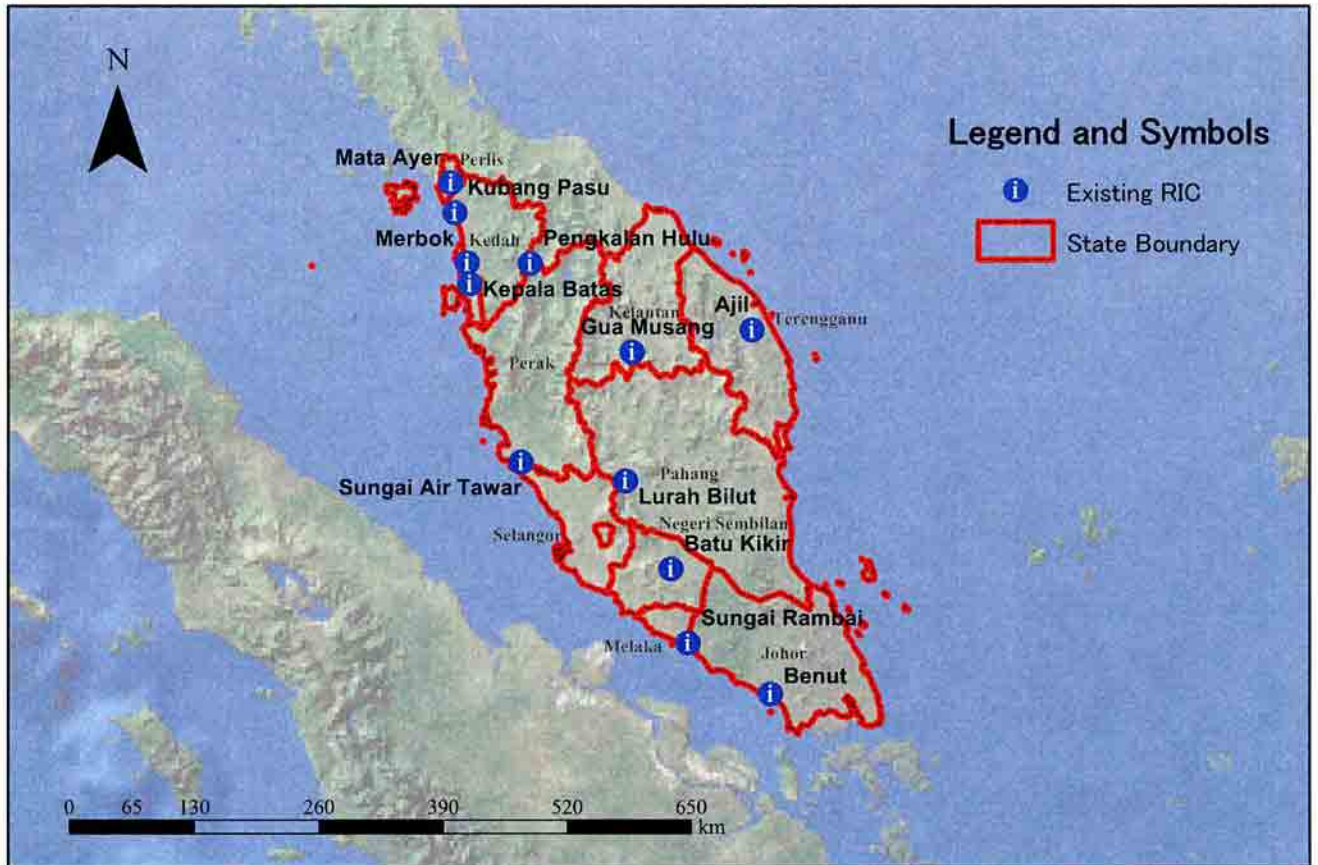
Population by District (2000)





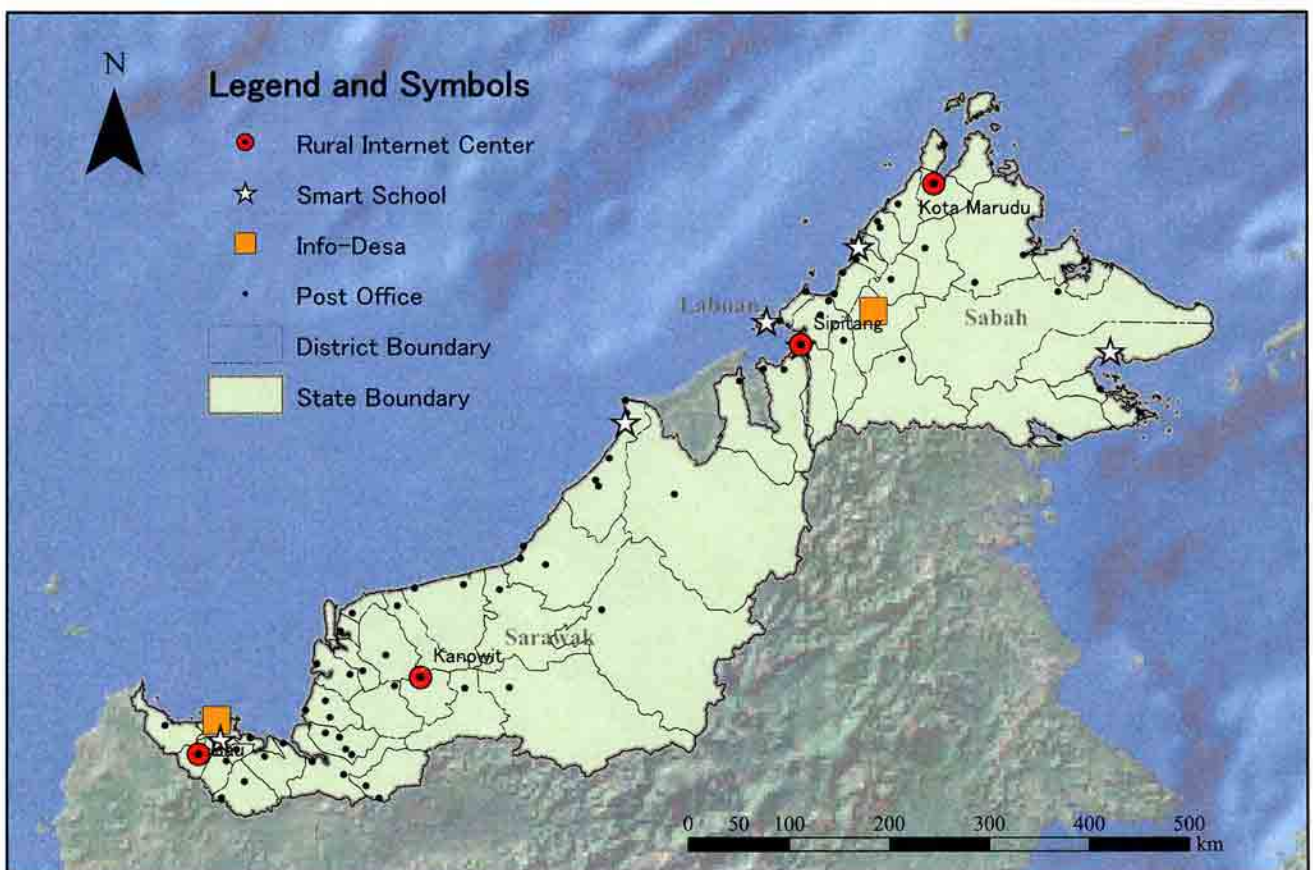
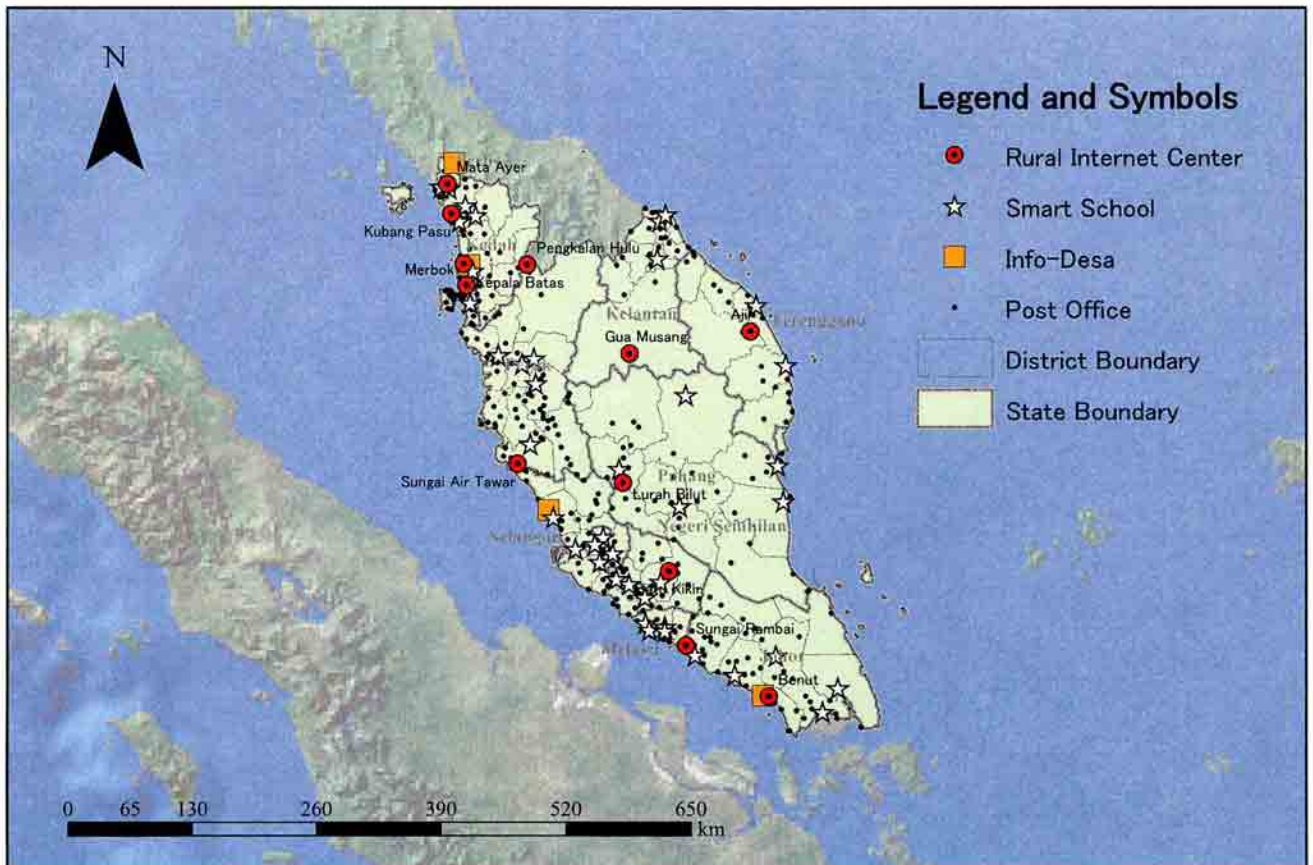
Administrative Boundary





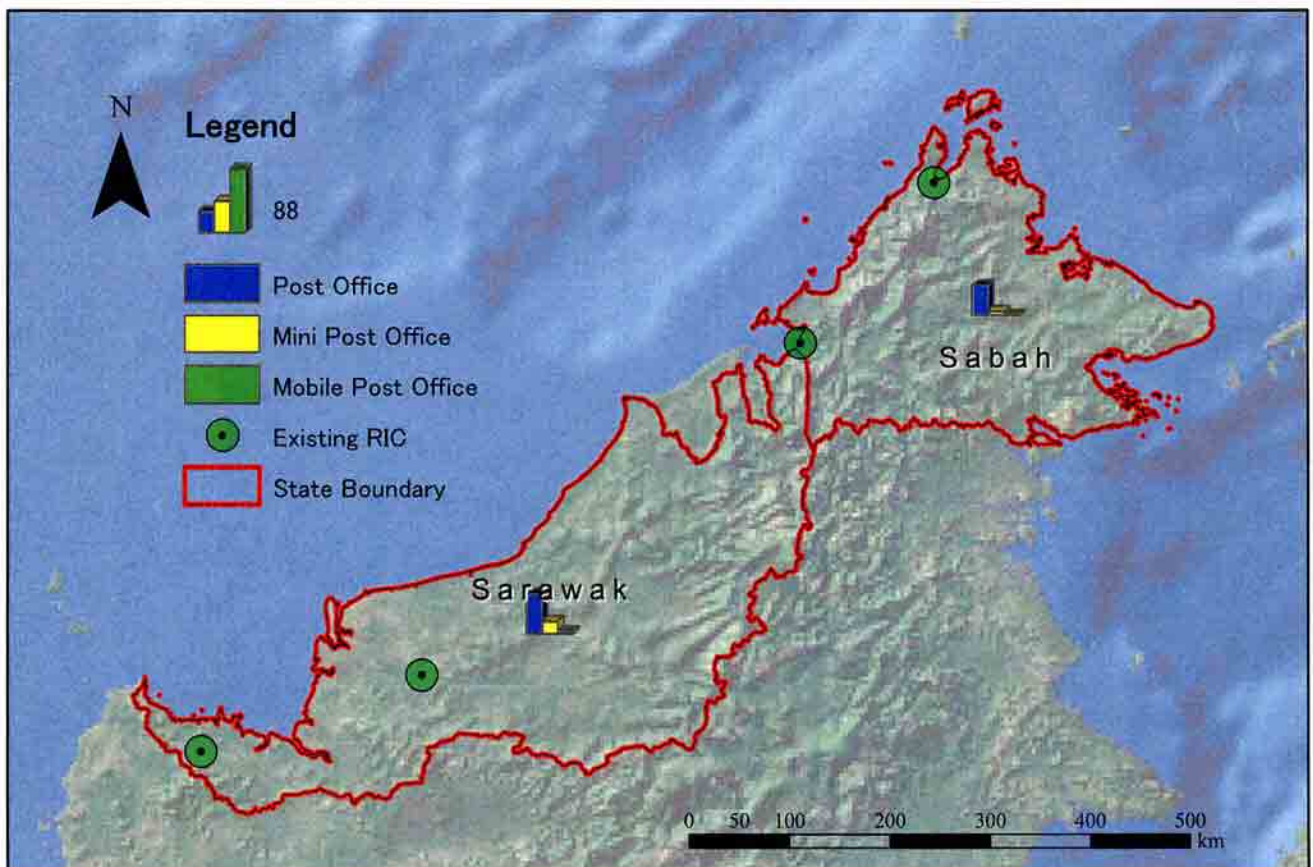
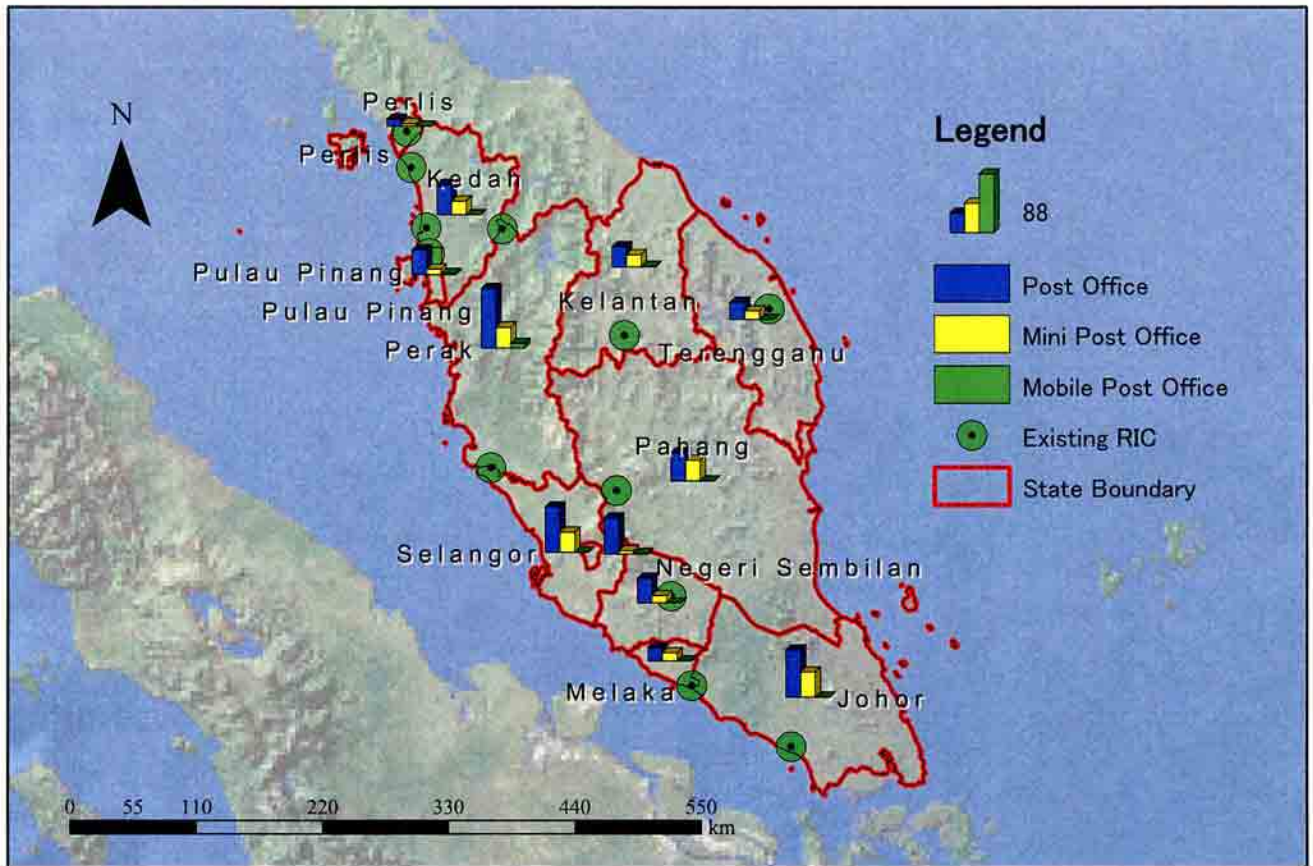
Location Map of the Study Area





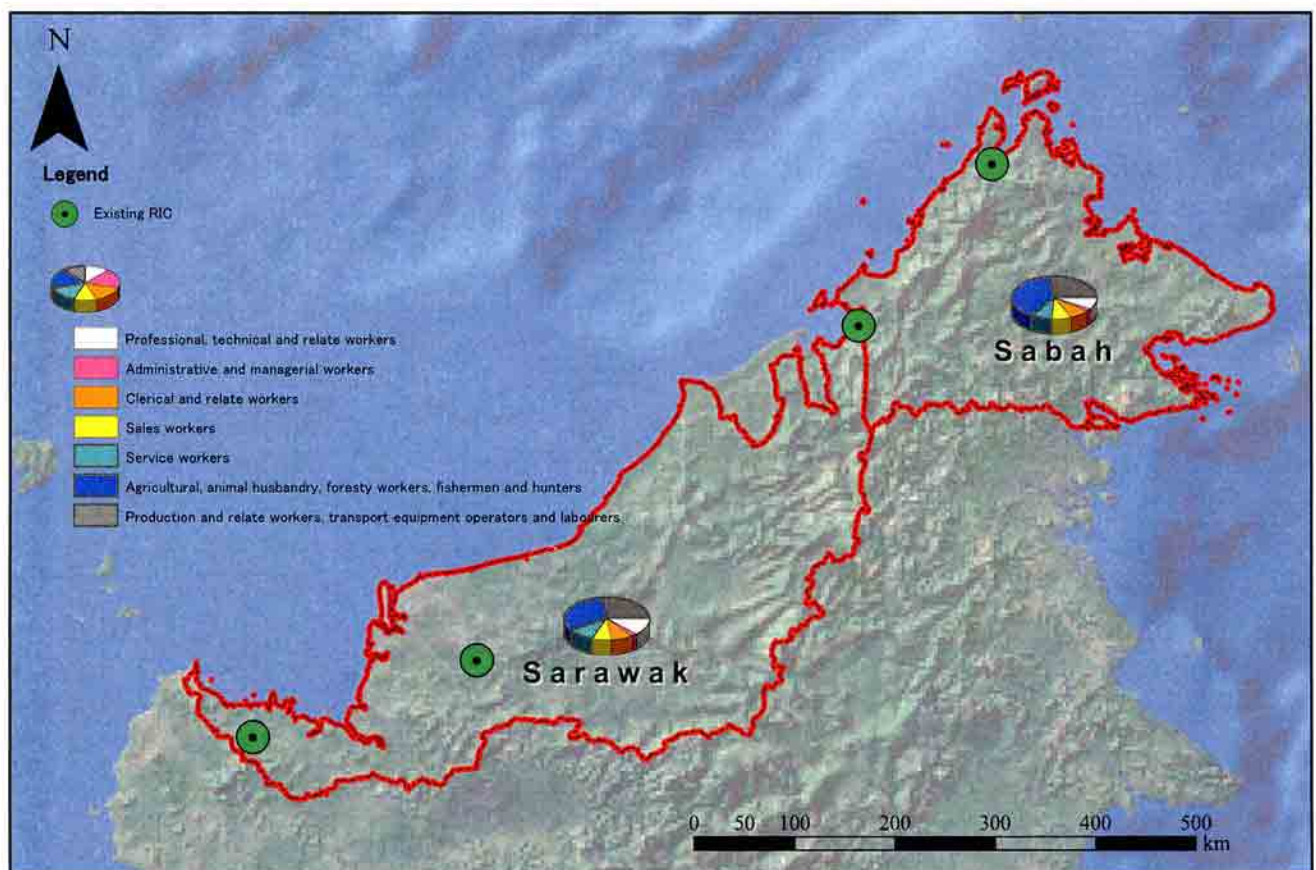
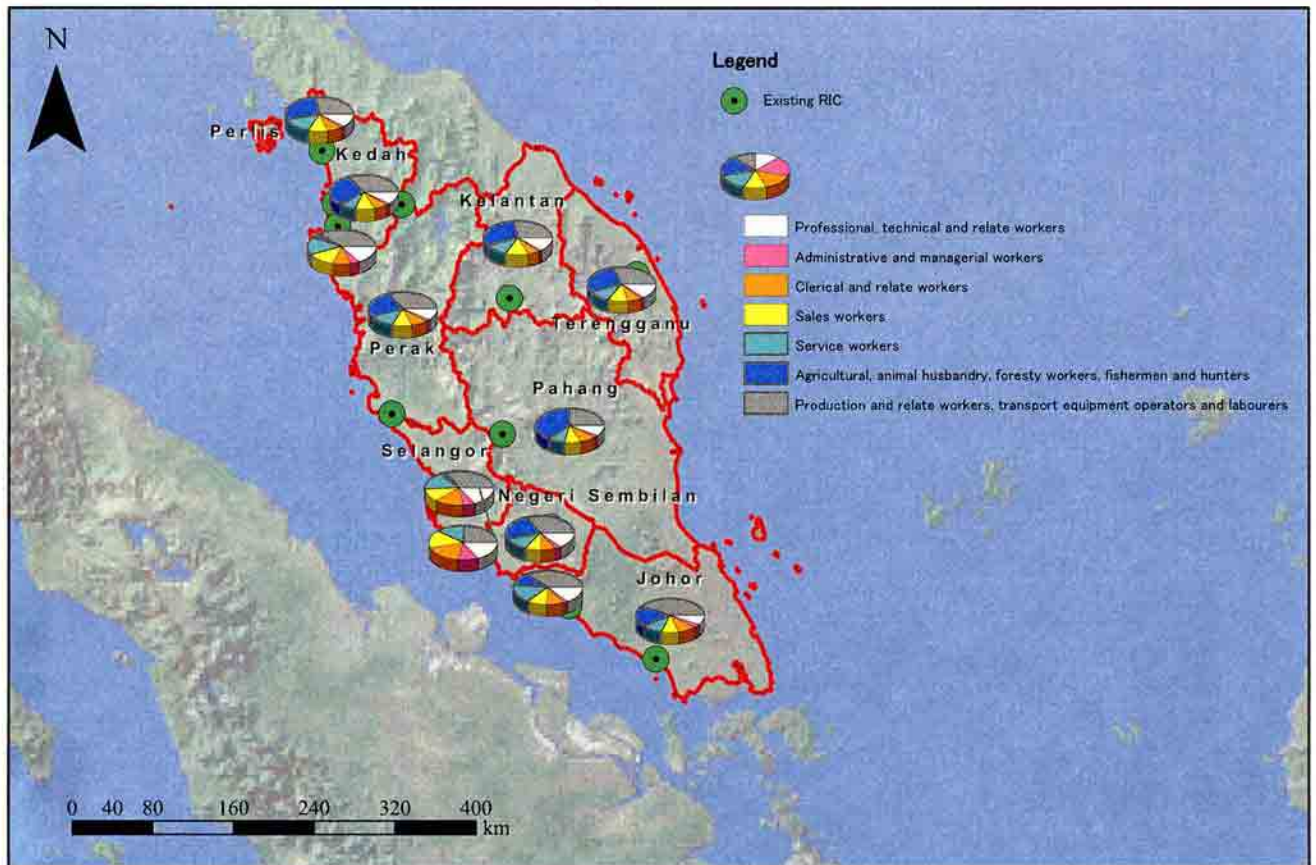
Location Map of RICs and Other Projects





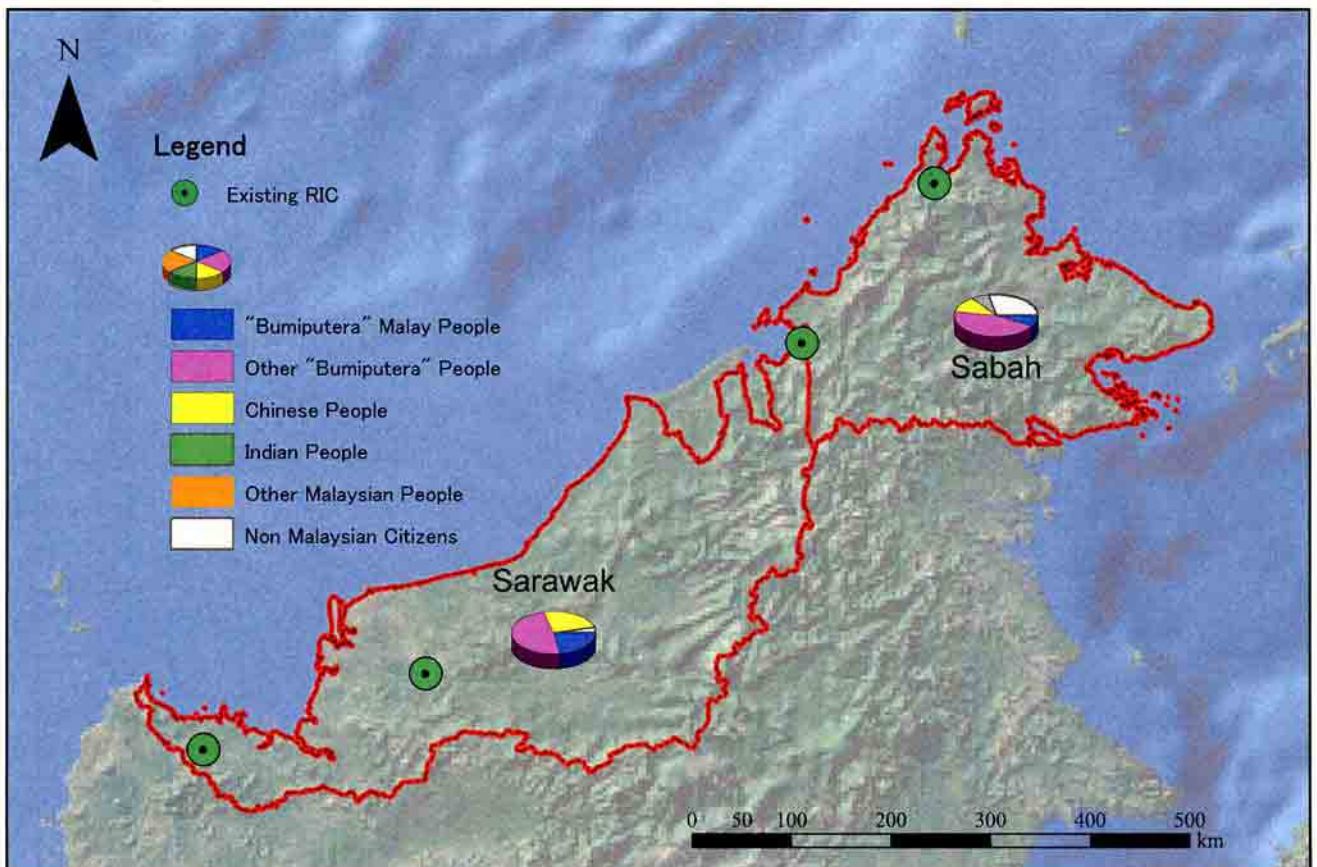
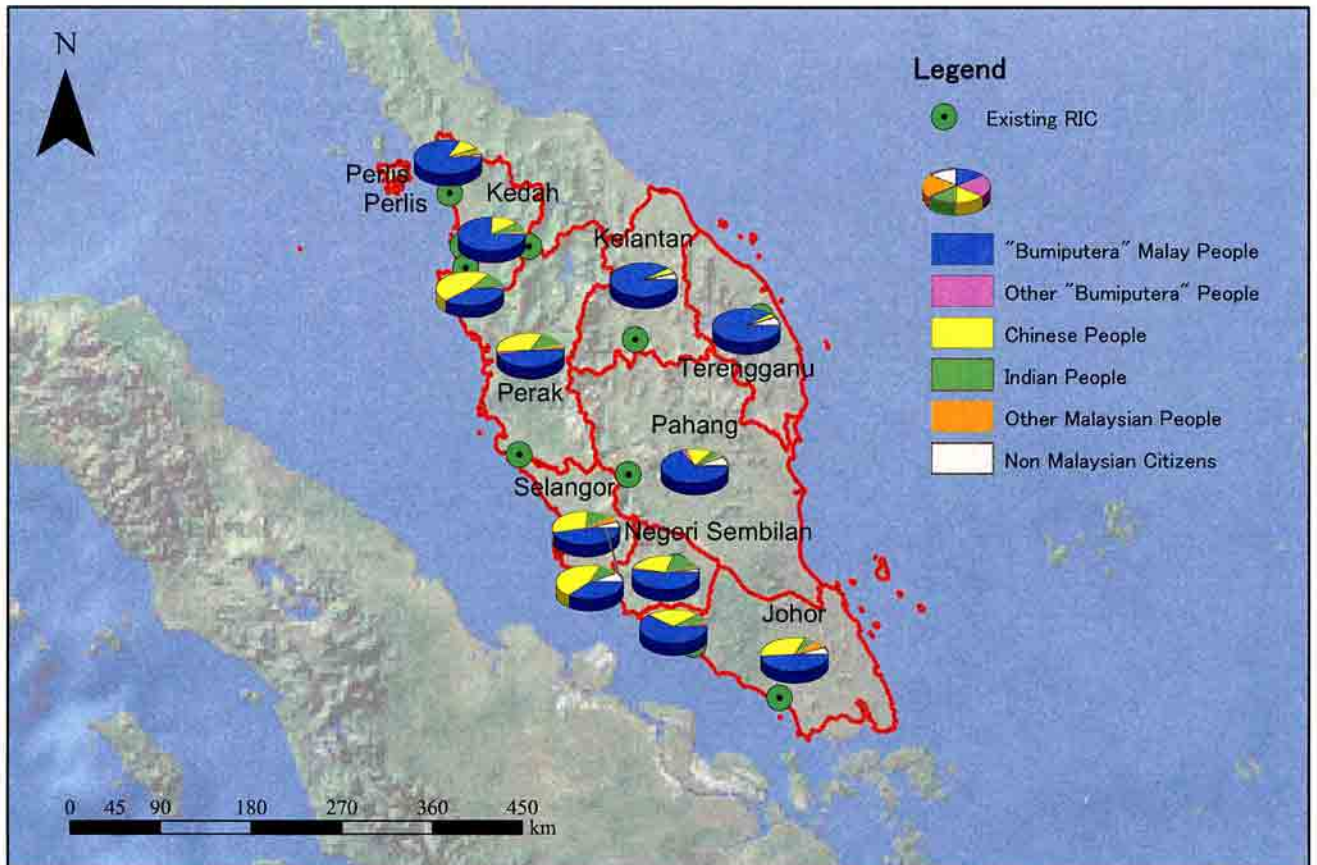
Number of Postal Agencies by State (1999)





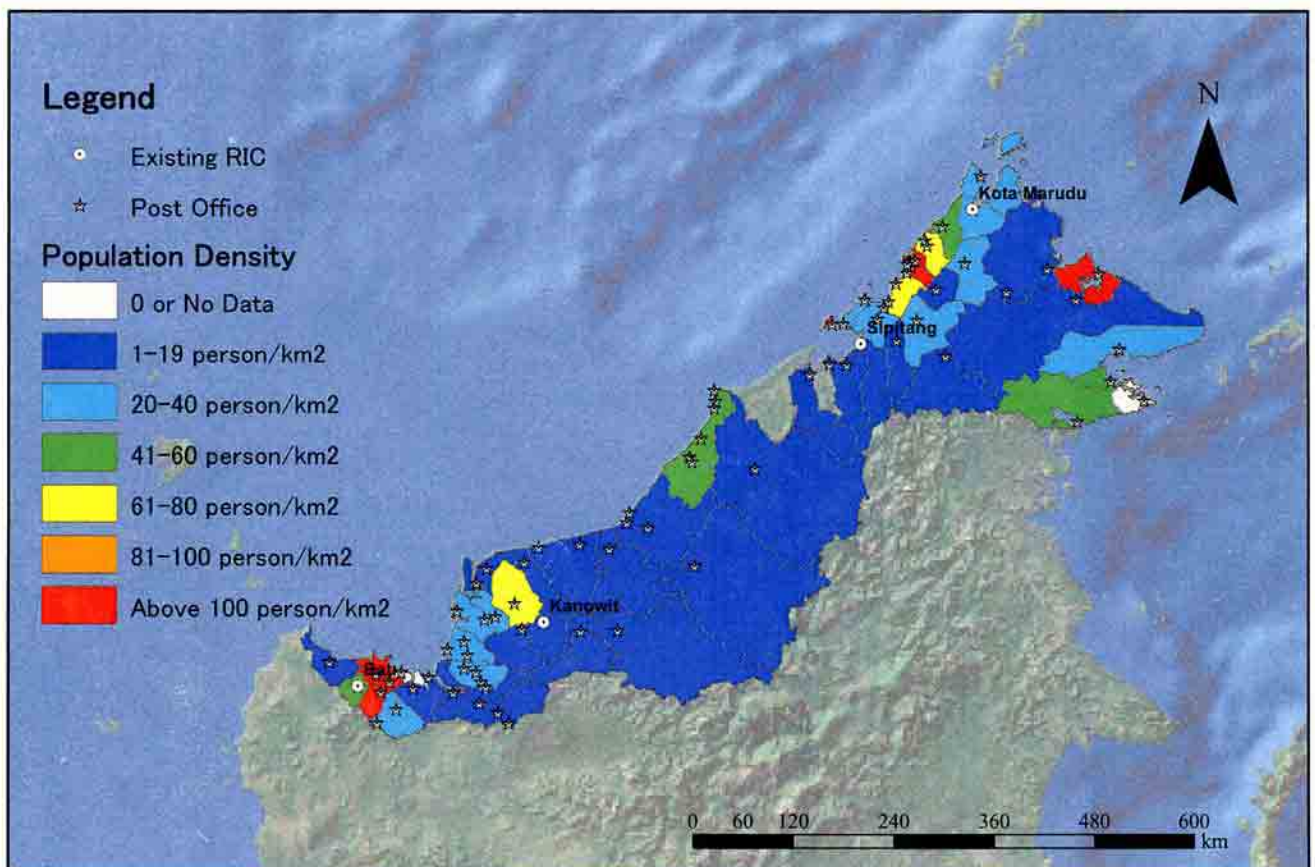
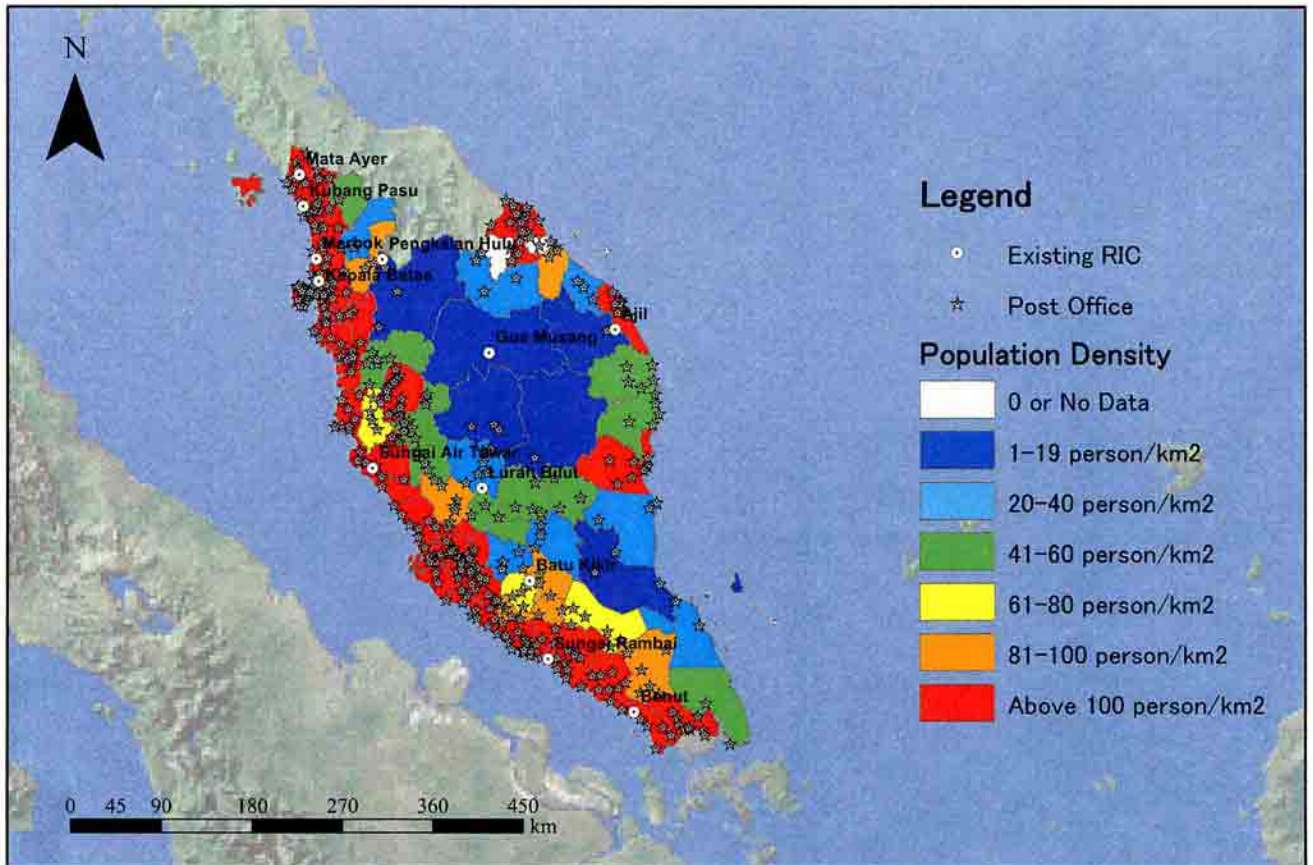
Placement by the Employment Service by State and Occupational Groups (1998)





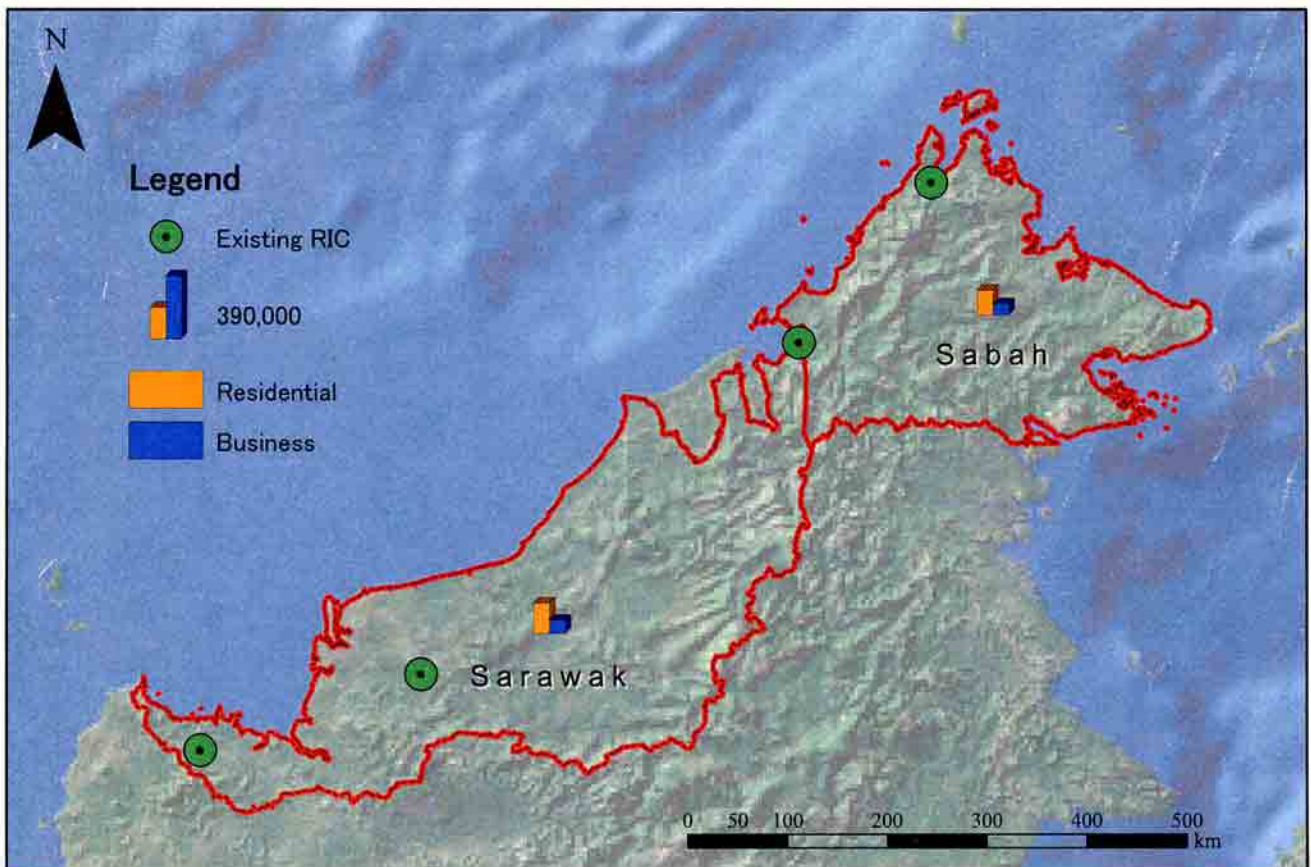
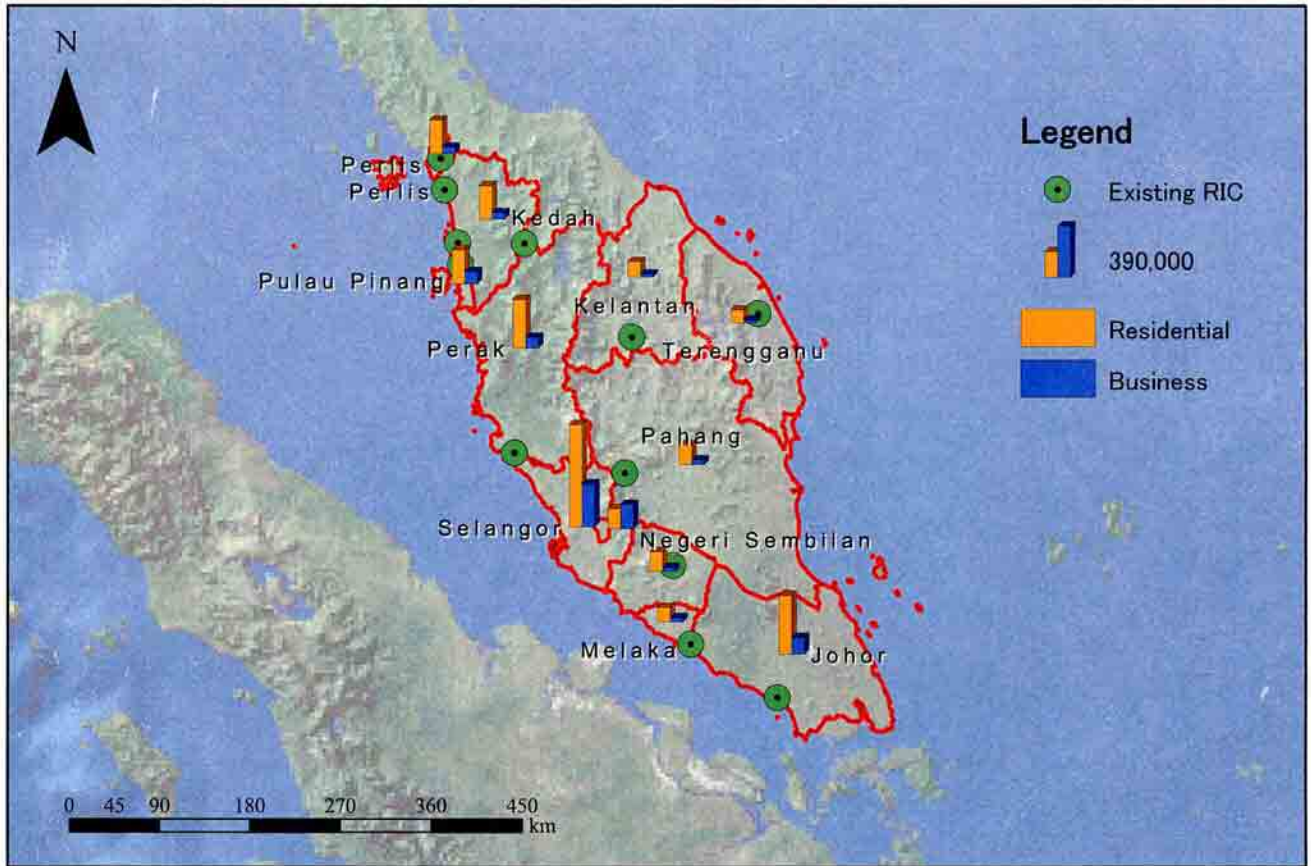
Population Rate by State and Ethnic Group (2000)





Population Density by District (2000)





Number of Telephone Subscribers by State (1999)