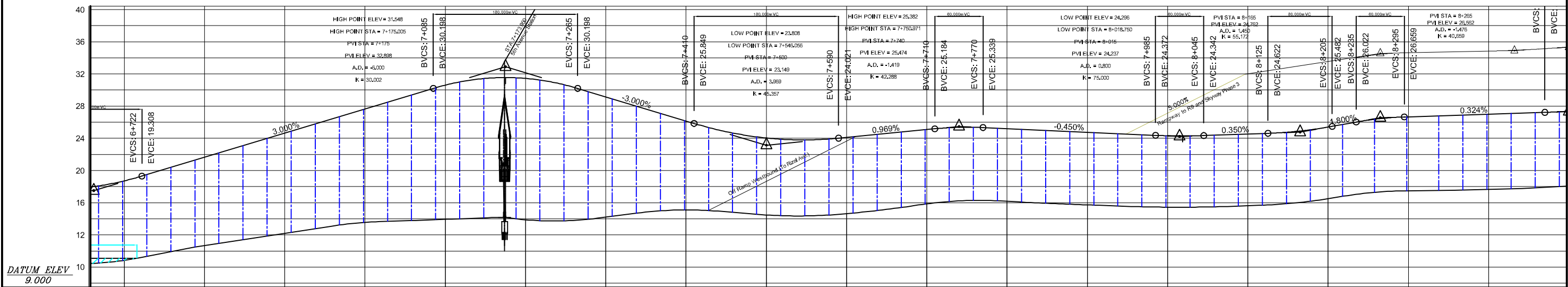


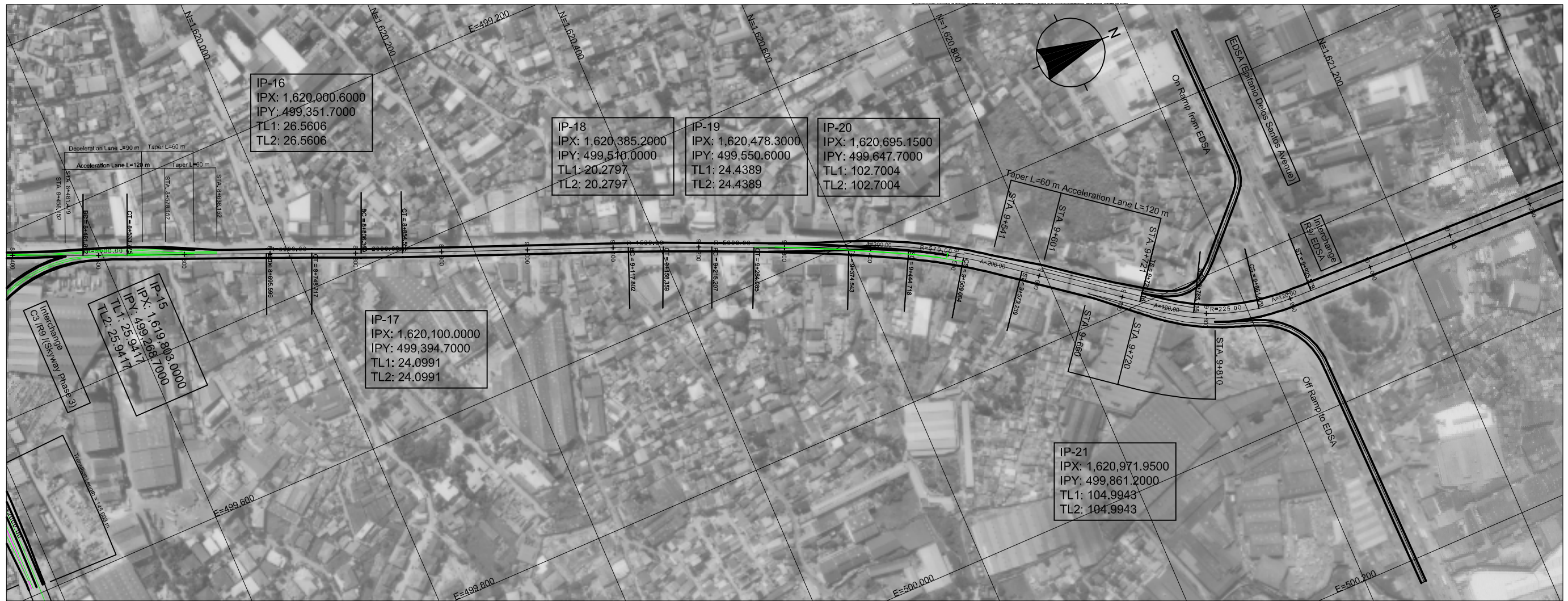
STATION	5+200	5+400	5+600	5+800	6+000	6+200	6+400	6+600	6+800
FINISHED GRADE EL.	11.872	12.222	12.082	11.732	11.732	12.082	12.082	11.732	11.382
EXISTING GROUND EL.	2.819	3.168	3.013	2.663	2.632	2.982	2.967	2.617	2.267
HORIZONTAL CURVATURE	<p>A = 150</p> <p>CS: 5+098,289 ST: 5+148,289</p> <p>BC: 6+553,590 R = 3,000 CT: 6+715,219 BC: 6+741,379 R = 500 CT: 6+861,460</p> <p>BC: 6+371,322 R = 3,000 CT: 6+550,601 BC: 6+884</p>								

	R10/C3/R9 EXPRESSWAY PROJECT		PLAN AND PROFILE R10-C3-R9 ROUTE (STA 5+100 ~ STA 6+800)		SCALE		DWG. No.	
					HORIZONTAL 1:5,000 VERTICAL 1:500	BD-11		



STATION	6+800	6+900	7+000	7+100	7+200	7+300	7+400	7+500	7+600	7+700	7+800	7+900	8+000	8+100	8+200	8+300	8+400	8+500	
FINISHED GRADE EL.	21.648	24.648	27.648	30.610	31.444	29.148	26.149	24.042	24.118	25.087	25.204	24.754	24.319	24.534	25.394	26.675	27.000	27.378	28.365
EXISTING GROUND EL.	10.684	12.204	13.551	13.942	13.880	14.208	15.106	14.478	14.641	15.862	16.170	15.729	15.446	15.629	16.489	17.472	17.660	18.076	19.166
HORIZONTAL CURVATURE	41.379 R=500 CT: 5+851.460 BC: 7+144.685 CT: 7+194.419 R=10,000 TS: 7+770.467 SC: 7+826.376 CS: 7+902.157 ST: 7+961.066 A=180 R=550 A=180 SC: 8+215.370 CS: 8+315.115 A=80 TS: 7+861.142 SC: 8+033.142 R=400 TS: 8+151.370 A=120 R=150 BC: 8+481.892 CT: 8+533.775																		

	R10/C3/R9 EXPRESSWAY PROJECT		PLAN AND PROFILE R10-C3-R9 ROUTE (STA 6+800 ~ STA 8+500)		SCALE		DWG. No.	
					HORIZONTAL 1:5,000 VERTICAL 1:500		BD-12	



IP-16
 IPX: 1,620,000.6000
 IPY: 499,351.7000
 TL1: 26.5606
 TL2: 26.5606

IP-18
 IPX: 1,620,385.2000
 IPY: 499,510.0000
 TL1: 20.2797
 TL2: 20.2797

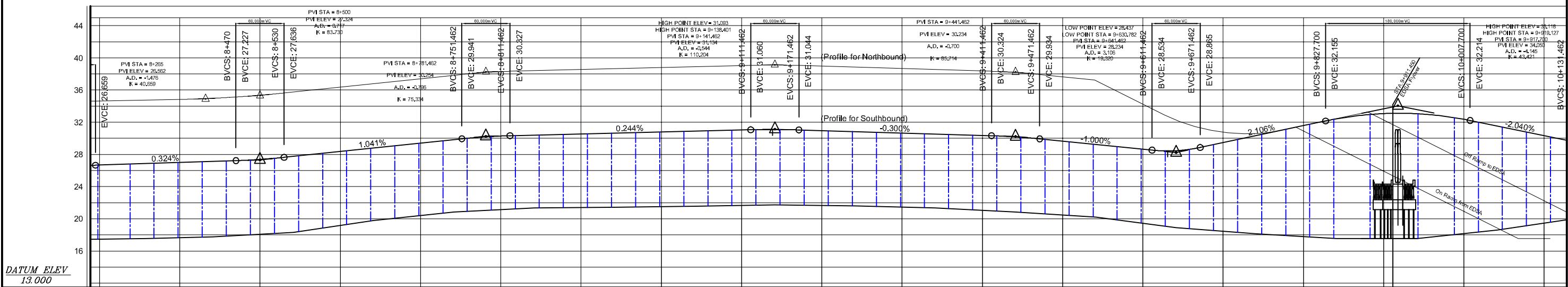
IP-19
 IPX: 1,620,478.3000
 IPY: 499,550.6000
 TL1: 24.4389
 TL2: 24.4389

IP-20
 IPX: 1,620,695.1500
 IPY: 499,647.7000
 TL1: 102.7004
 TL2: 102.7004

IP-15
 IPX: 1,619,803.0000
 IPY: 499,268.7000
 TL1: 25.9471
 TL2: 25.9471

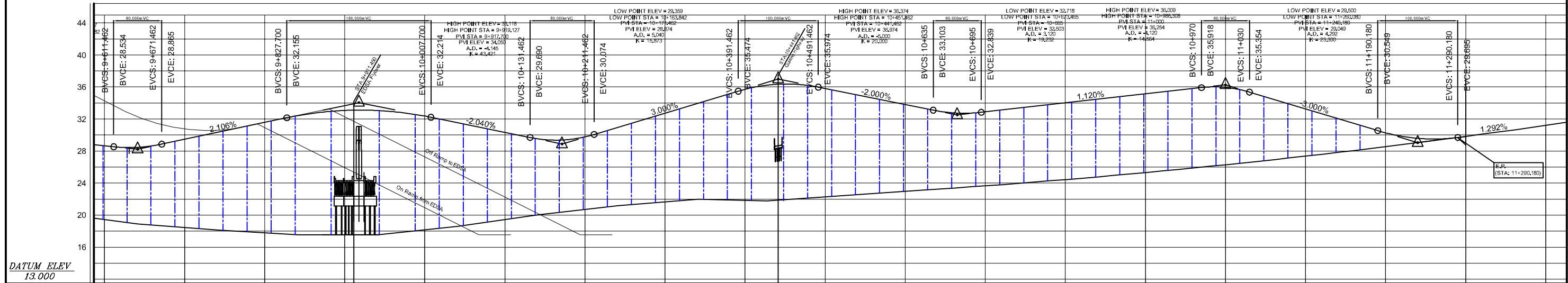
IP-17
 IPX: 1,620,100.0000
 IPY: 499,394.7000
 TL1: 24.0991
 TL2: 24.0991

IP-21
 IPX: 1,620,971.9500
 IPY: 499,861.2000
 TL1: 104.9943
 TL2: 104.9943



STATION	+400	8+600	8+800	9+000	9+200	9+400	9+600	9+800	10+000	10+200									
FINISHED GRADE EL.	27.000	27.378	28.365	29.406	30.290	30.543	30.788	31.032	30.958	30.658	30.358	29.648	28.648	29.466	31.572	33.075	32.364	30.331	29.771
EXISTING GROUND EL.	17.660	18.076	19.166	20.406	21.137	21.399	21.516	21.675	21.662	21.454	21.063	20.480	19.449	18.469	17.795	17.550	18.165	19.449	20.723
HORIZONTAL CURVATURE	BC: 8+695.596 CT: 8+748.717 R = 5,000		BC: 8+806.360 CT: 8+854.555 R = 2,000		BC: 9+117.202 CT: 9+158.399 R = 1,500		BC: 9+215.207 CT: 9+264.085 R = 5,000		TS: 9+374.543 SC: 9+444.716 CS: 9+500.064 ST: 9+579.239 A = 200 R = 225 A = 200		TS: 9+721.116 SC: 9+785.116 CS: 9+861.879 ST: 9+925.879 A = 120 R = 225 A = 120								

	R10/C3/R9 EXPRESSWAY PROJECT		PLAN AND PROFILE R10-C3-R9 ROUTE (STA 8+500 ~ STA 10+200)		SCALE		DWG. No. BD-13
					HORIZONTAL 1:5,000 VERTICAL 1:500		

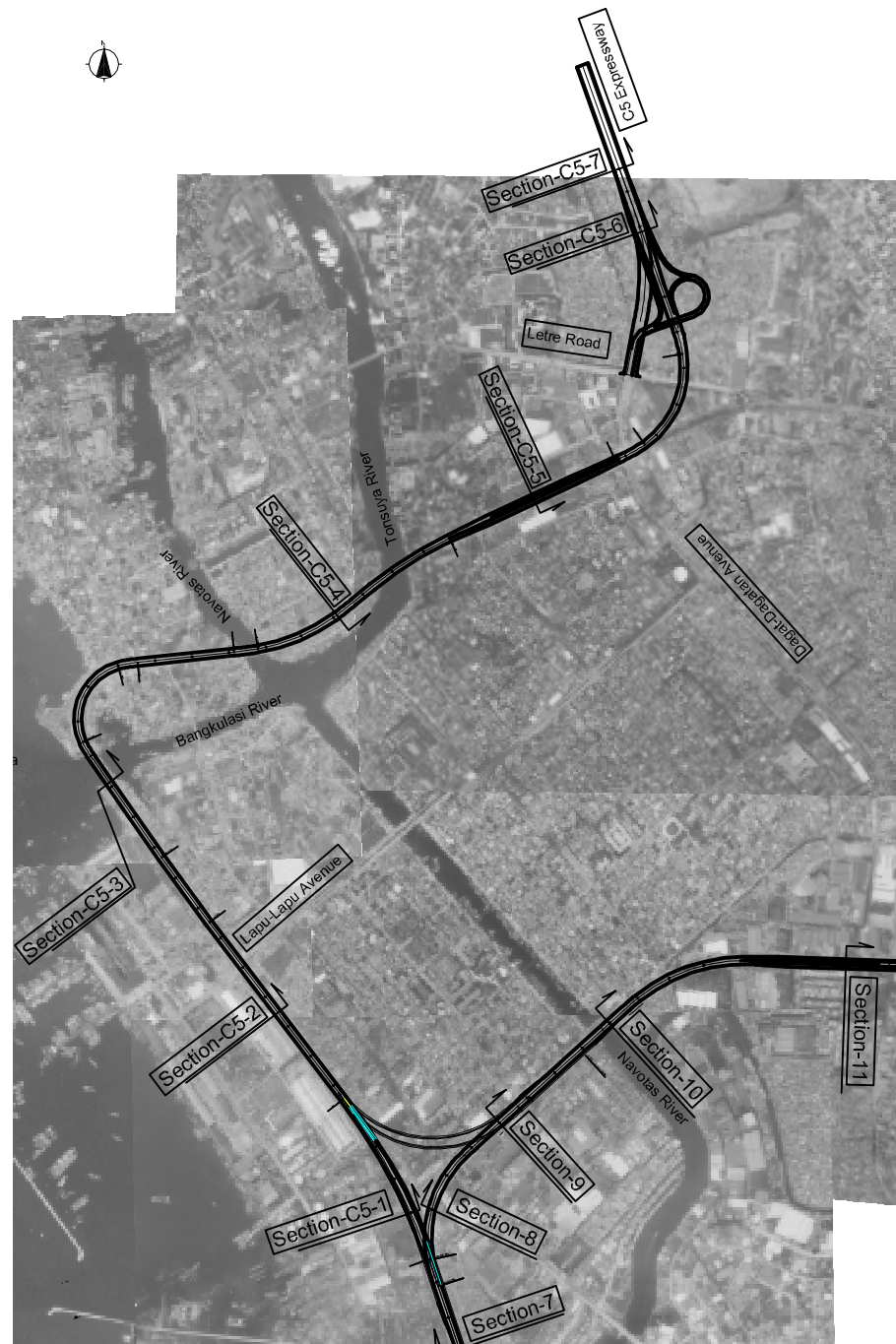


STATION	9+800	9+850	9+900	9+950	10+000	10+050	10+100	10+150	10+200	10+250	10+300	10+350	10+400	10+450	10+500	10+550	10+600	10+650	10+700	10+750	10+800	10+850	10+900	10+950	11+000	11+050	11+100	11+150	11+200	11+250	11+300	11+350	11+400			
FINISHED GRADE EL.	29.466	31.572	33.075	32.364	30.331	29.771	32.730	35.712	35.803	33.803	32.895	34.015	36.134	35.945	33.254	30.275	29.821	31.200	31.989																	
EXISTING GROUND EL.	18.469	17.795	17.550	18.165	19.449	20.723	21.688	21.856	22.266	22.961	23.660	24.437	25.314	26.291	27.369	28.545	29.821	31.200	31.989																	
HORIZONTAL CURVATURE																																				

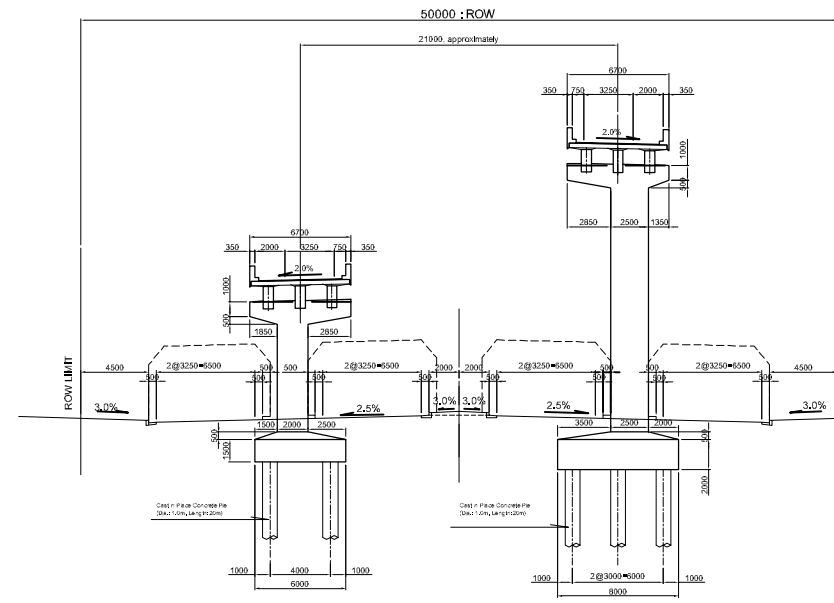
 JAPAN INTERNATIONAL COOPERATION AGENCY	 DEPARTMENT OF PUBLIC WORKS AND HIGHWAYS Republic of Philippines	 ALMEC CORPORATION NIPPON KOEI CO., LTD.	R10/C3/R9 EXPRESSWAY PROJECT	PLAN AND PROFILE R10-C3-R9 ROUTE (STA 10+200 ~ STA 11+300)	SCALE	DWG. No.
					HORIZONTAL 1:5,000 VERTICAL 1:500	BD-14

VICINITY MAP (Link Route to C5 Expressway)

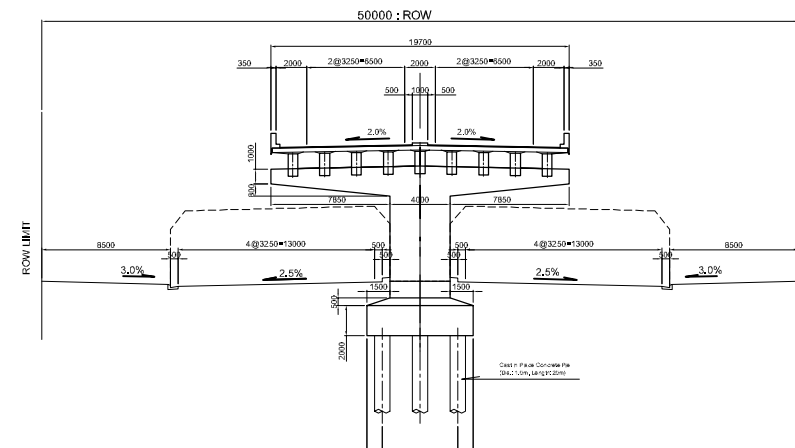
SCALE 1: 20,000



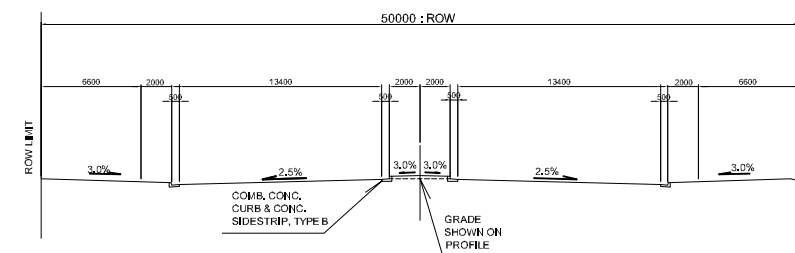
Section-C5-1 Scale 1:500



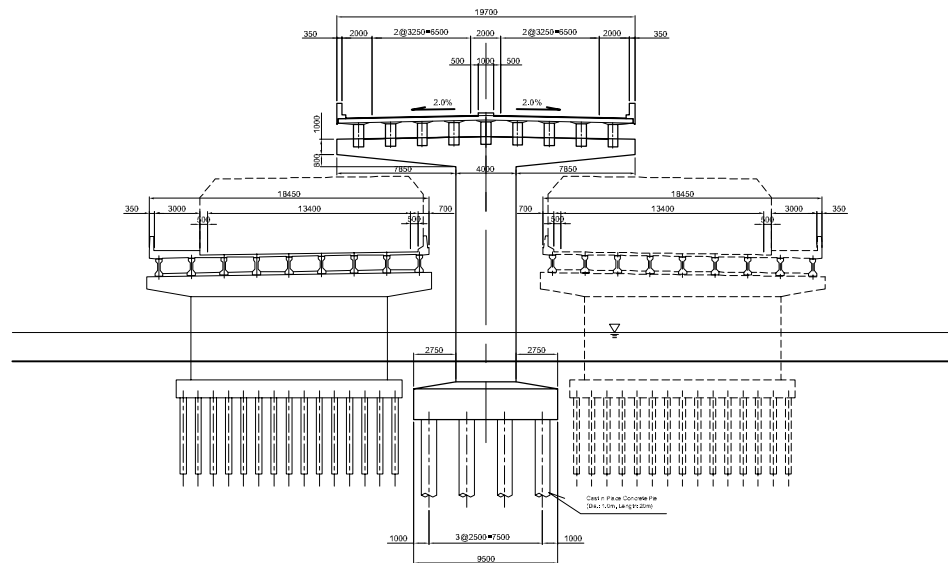
Section-C5-2 Scale 1:500



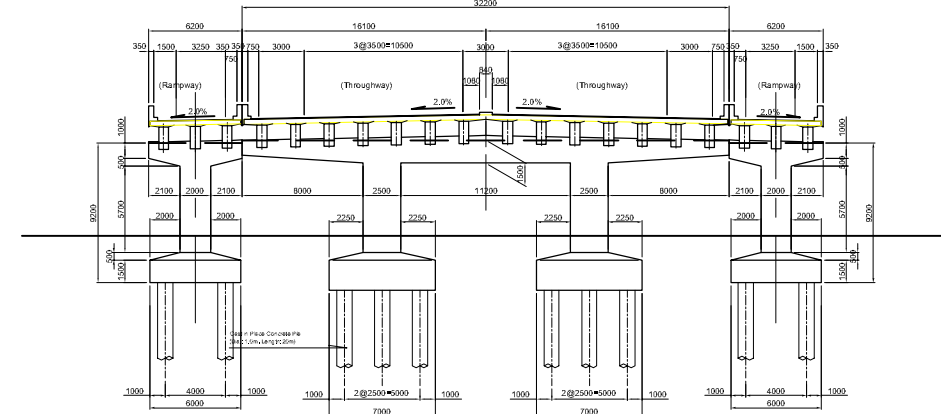
Cross Section of Existing At-Grade Road (Assumed)
 (Source: RADIAL ROAD R-10 PROJECT CONSTRUCTION PACKAGE I, from C-2 to Navotas Fisheries Port)
 (for Section-C5-1,2) Scale 1:500



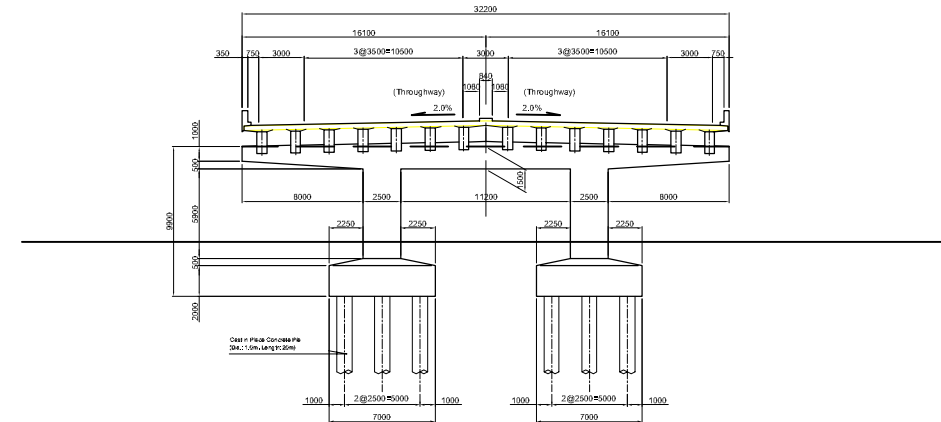
Section-C5-3 Scale 1:500



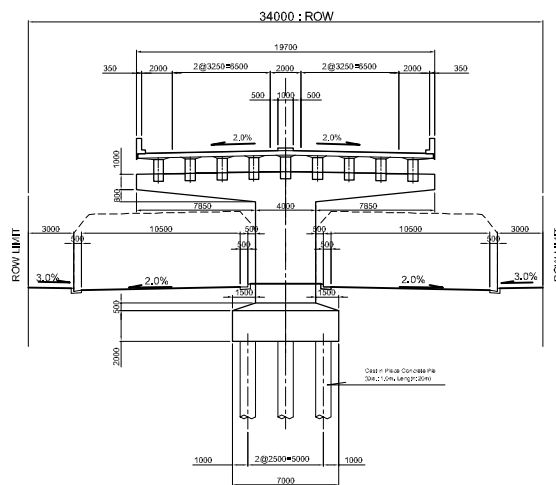
Section-C5-6 Scale 1:500



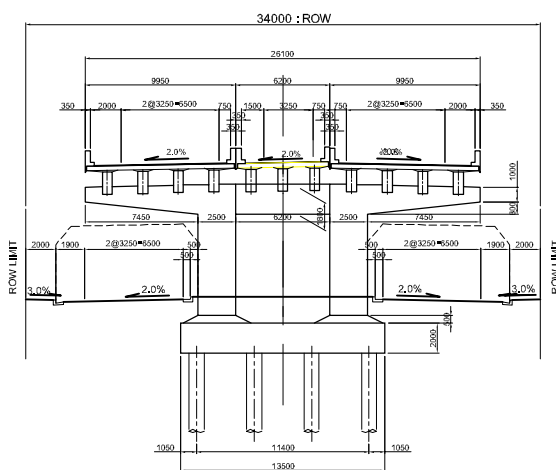
Section-C5-7 (STA: 8+164.471) Scale 1:500



Section-C5-4 Scale 1:500



Section-C5-5 Scale 1:500



Cross Section of Existing At-Grade Road (Reference)
 (Source: RADIAL ROAD 10 AND ITS RELATED ROADS PROJECT PHASE II, CONTRACT PACKAGE IV A)
 (from Letre Road to Monumento)
 (for Section-C5-4,5) Scale 1:500

