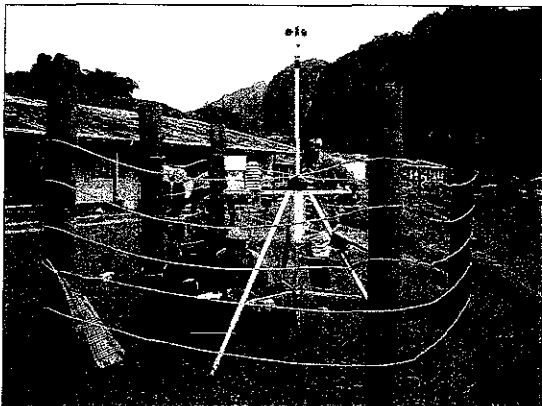


Setting weather station

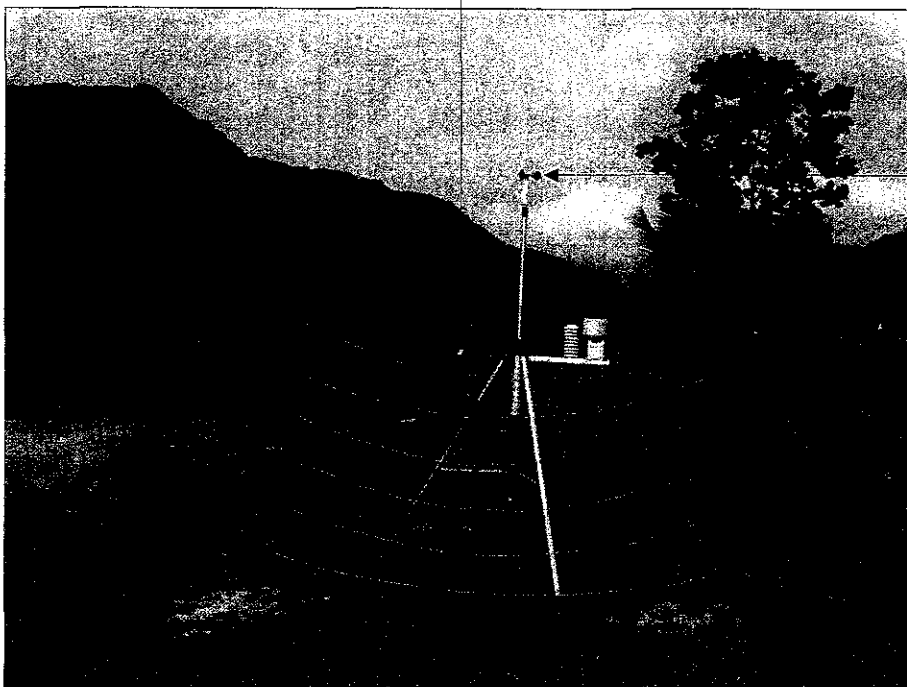


Downloading the meteorological data



Wind direction meter

Solar radiation meter



Solar panel

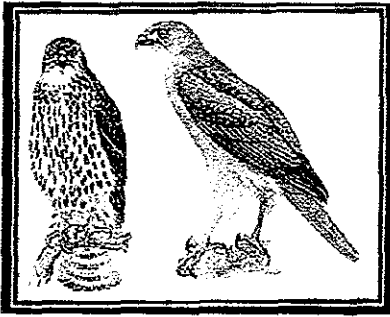
Anemometer

Rain gauge

Hygrometer
Thermometer

PH-1 Weather station set in Namosi village

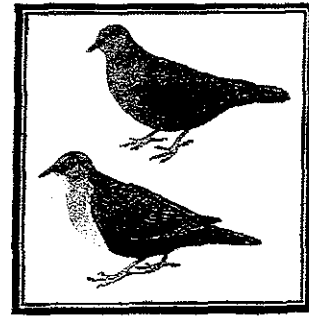
Photographs



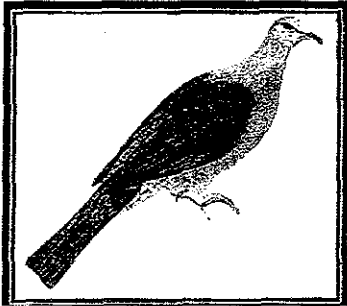
Accipiter rufitorques (Left)
Circus approximans (Right)



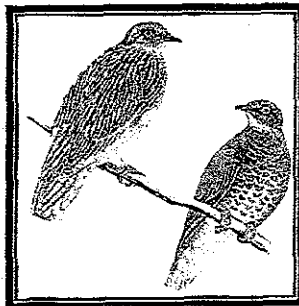
Falco peregrinus



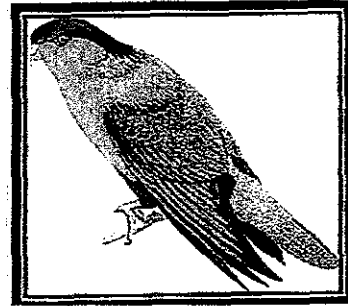
Streptopelia chinensis (Top)
Gallicolumba stairii (Bottom)



Ducula latrans



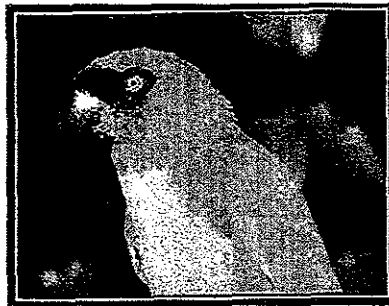
Ptilinopus perousii (Left)
Chrysoenas luteovirens (Right)



Phigys solitarius



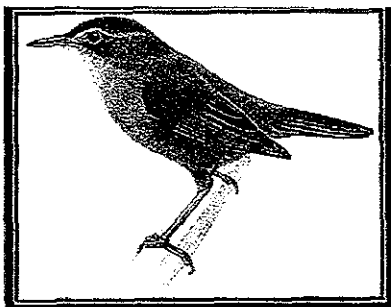
Chamosyna amabilis



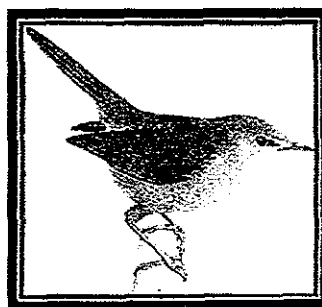
Prosopiea personata



Artamus mentalis



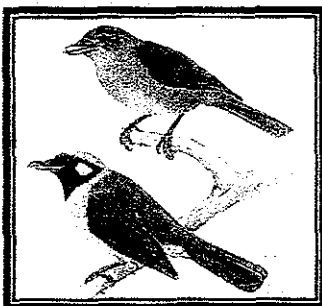
Trichocichla rufa



Cettia ruficapilla



Mayrornis lessoni



Myiagra nigrigularis (Top)
Myiagra vanikorensis (Bottom)

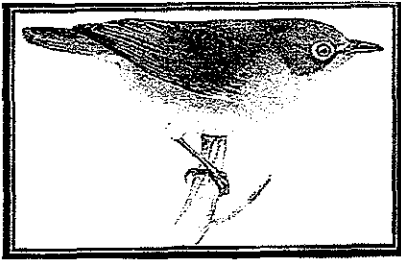


Myiagra azureocapilla

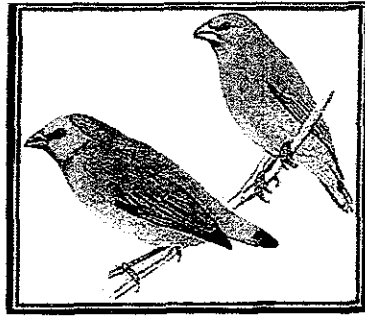


Pachycephala pectoralis

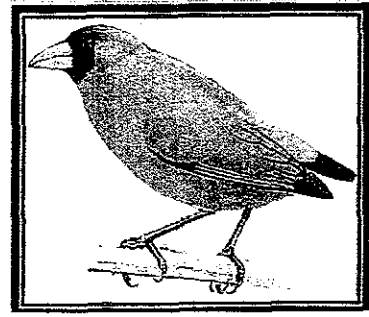
Photographs



Zosterops explorer



Zosterops Lateralis (Left)
Erythrura pealii (Right)



Erythrura kleinschmidti



Gymnomyza viridis

Photographs



Candoia bibronii



Ogmodon vitiensis



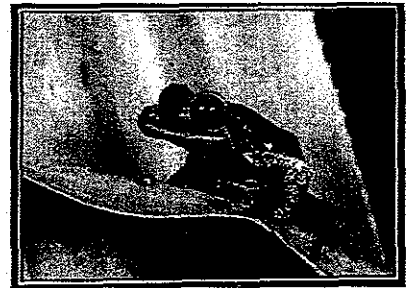
Lepidodactylus manni



Unidentified Skink- possibly *E moia mokosariniveikau*



Emoia parkeri



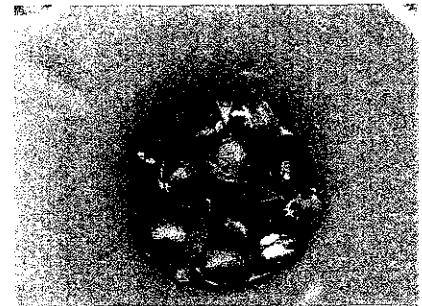
Bufo marinus



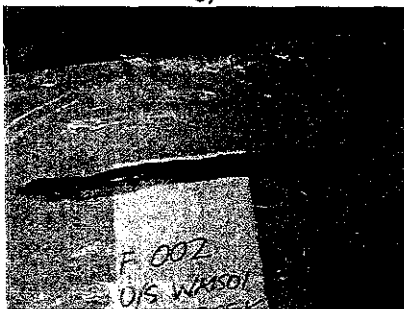
Platymantis vitiensis (endemic)



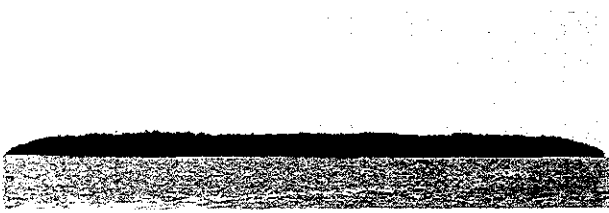
Notopteris macdonaldi



Batissa violacea



Anguilla marmorata



(1). Smaller island vegetation(Nasoata Island)



01a. Coastal strand vegetation



01b. Mangrove stand on a small Island



04b. Melimeli swamp, Namosi



04a. Rewa River mangrove forest



05a. Gymnostoma_Dacrydium dominated forest near Wainiqanake,Namosi

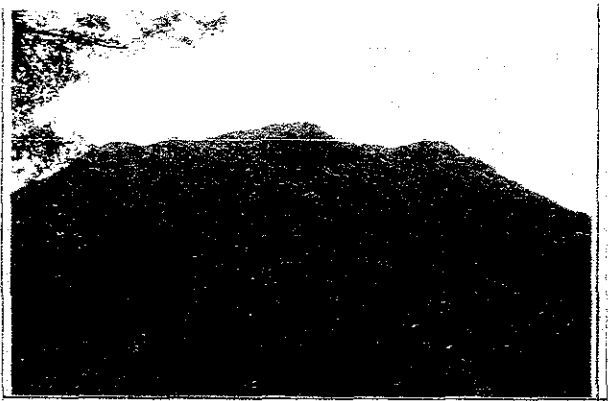
PH-3 Photographs of the principal flora in Viti Levu South Area (1)



05b. Lowland rain forest.(Pandanus-Dacrydium-Fragraea dominated forest in Waisoi, Namosi)



05c. Pandanus-Dacrydium-Fragraea dominated forest in Waisoi, Namosi



05d. Lowland rain forest(Peak south of Wainikatama Camp)



05e. Lowland rain forest(Forest in the Waikava Catchment)

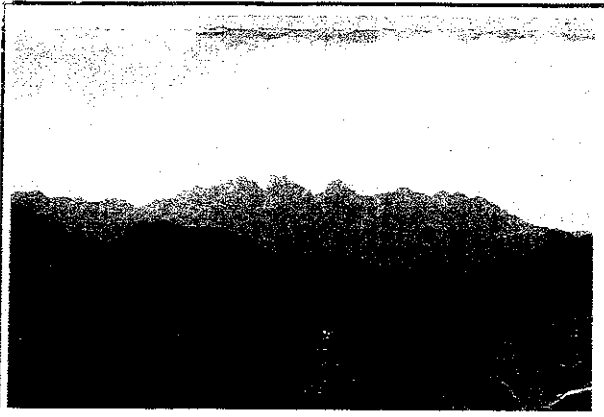


05f. Lowland rain forest(Forest in the Waikava Catchment)



05g Lowland rain forest(Wainikatama Camp)

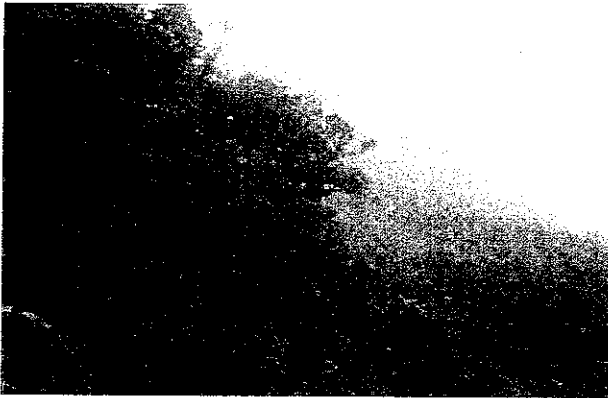
PH-3 Photographs of the principal flora in Viti Levu South Area (2)



06a. Upland rain forest(Korobasabasaga Range)



06b. Upland rain forest(Korobasabasaga Range)



07. Montane cloud forest Korobasabasaga range, Namosi



08a. Gully forest in grassland vegetation, near Yalavou, Navosa



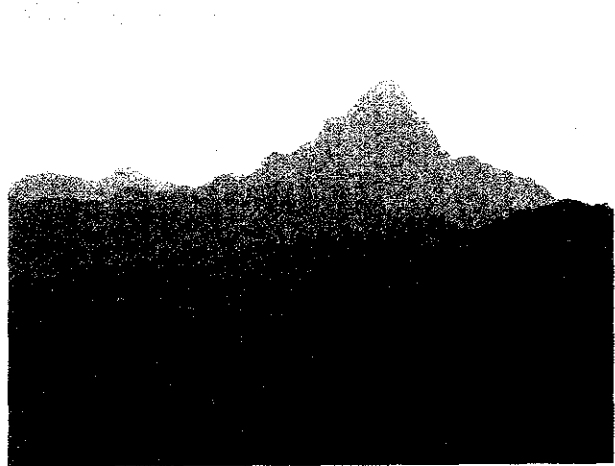
08b. Gully forest in grassland vegetation, near Yalavou, Navosa



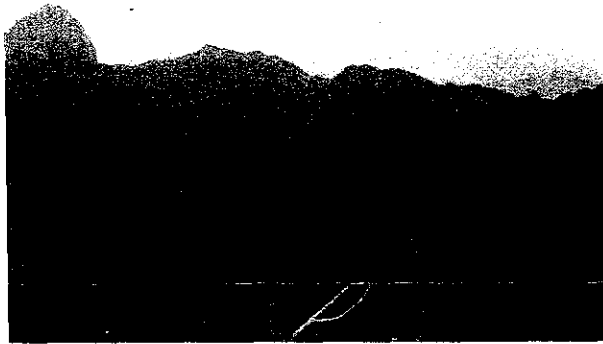
09. One of the few remaining natural sago (*Metroxylon vitiense*) palm swamp near Vunivia village, Serua - South Viti Levu.



10



11. Intact Forest system to the east Mt. Nauluvatu in Naitasiri Province



12. Mt. Voma and the Korobasabasaga range in the background—areas of high biodiversity



13. View towards drill site 4



14. View through a creek flat forest near Wainavuga base camp



15. Profile structure of a creek flat forest at Wainavuga camp site

PH-3 Photographs of the principal flora in Viti Levu South Area (4)



16. Agathis – Dacrydium dominated forest on a high elevation



17. Pittosporum rhytidocarpum– It is a shrub, endemic sub-canopy tree



18. Freycinetia impervida– An indigenous climbing liana belonging to the Pandanus family and common in all forest types



19. Palaquium porphyreum– An endemic canopy tree and also an important timber tree



20. Schefflera seemanniana– An endemic sub-canopy tree in the umbrella tree family



21. Parinari insularum– It is an indigenous canopy tree dominant on creek/river flats with a sweet smelling fruit

PH-3 Photographs of the principal flora in Viti Levu South Area (5)



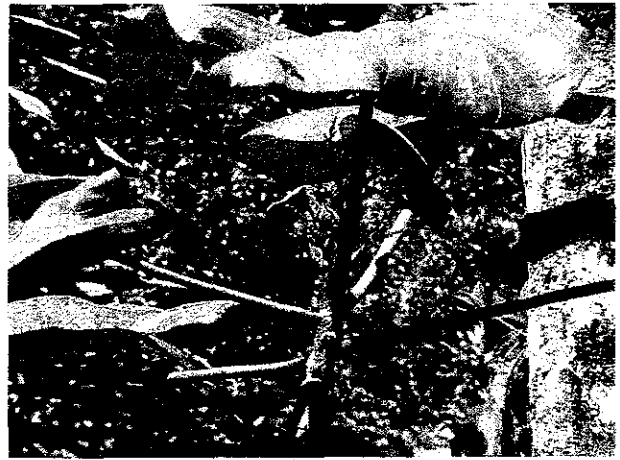
22. *Syzygium gracillipes* – An endemic sub-canopy shrub



23. *Richella monosperma*– A relatively common endemic



24. *Calanthe ventilabrum*– An indigenous common orchid



25. *Macaranga magna*– An endemic common sub-canopy tree



26. *Baccaurea pulvinata* – Common endemic sub-canopy tree



27. *Alpinia boia*– An endemic common widespread large ginger plant

PH-3 Photographs of the principal flora in Viti Levu South Area (6)



28. *Myristica castaneifolia* – A very common endemic important timber tree



29. *Trichospermum calyculatum* – An endemic common timber tree species



30. *Melicope vitiensis* – An endemic uncommon sub-canopy tree



31. *Psychotria brownei* – An endemic sub-canopy tree



32. *Pleandra insolita* – An endemic, common sub-canopy tree



33. *Sukania longipes* – An endemic uncommon subcanopy tree



34. *Palaquim porphyreum* - An uncommon canopy timber tree



35. *Turrillia ferruginea* - A very common endemic tree



36. *Microsorium linguaeforme*



37. *Ixora carewii* - An endemic sub-canopy tree



38. *Astronidium saulae* - An endemic sub-canopy tree common



39. *Hoya diptera* - An endemic uncommon climber



40. *Freycinetia impavida* – An endemic locally common plant with



41. *Pandanus sinicola*



42. *Maesa insularis* – An endemic scandent shrub



43. *Mussaenda raiateensis* – An endemic common shrub



44. *Elaeocarpus chionathus* – An endemic and rare sub-canopy tree



45. *Cynorkis fastigiata*

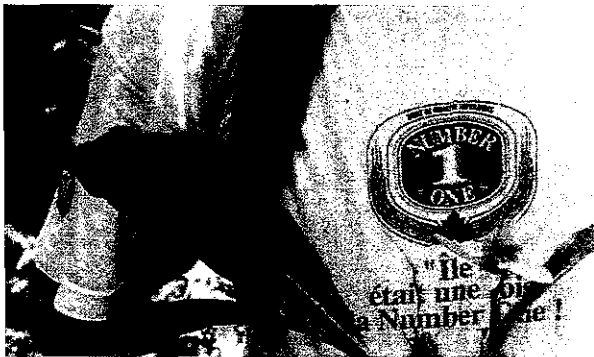
PH-3 Photographs of the principal flora in Viti Levu South Area (9)



46. *Veitchia vitiensis* – An endemic



47. *Hydrophytum longiflorum* – An endemic common epiphyte



48. *Coelogyne macdonaldii*



49. *Podocarpus neriifolius* – Indigenous common important timber tree

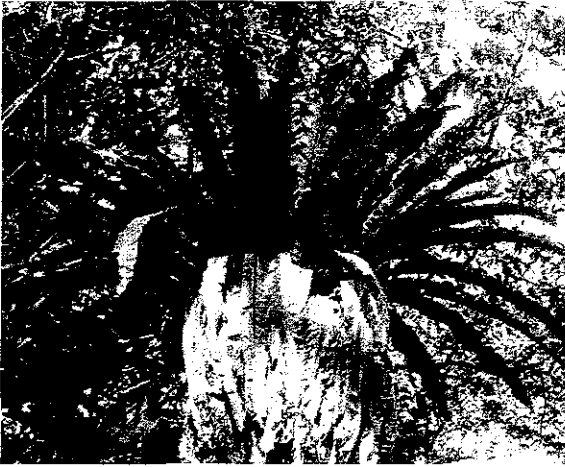


50. *Acalypha rivularis* – An endemic locally common plant



51. *Homalium nitens* – An endemic common sub-canopy tree

PH-3 Photographs of the principal flora in Viti Levu South Area (10)



52. *Asplenium australasicum* – An indigenous common epiphyte



54. *Collospurmum montana* – An endemic common plant



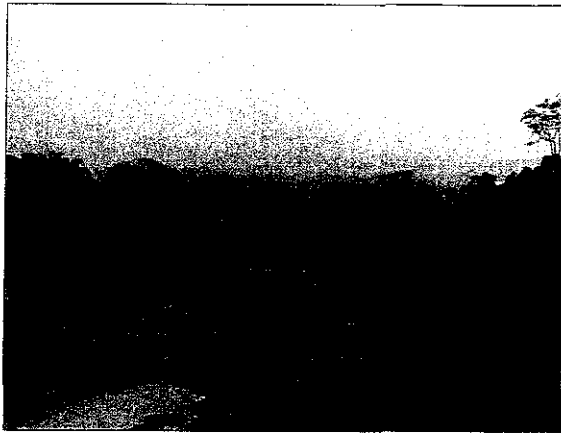
55. *Elatostema humile* – An endemic rare herbaceous shrub



56. *Astronidium robustum* – An endemic locally common plant



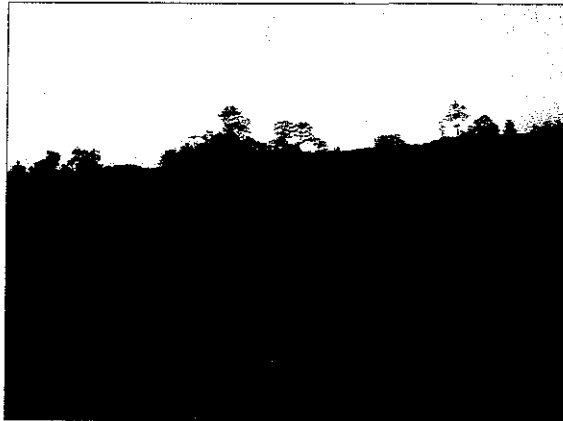
57. *Cyathea harvei* – An indigenous tree fern with redundant fronds



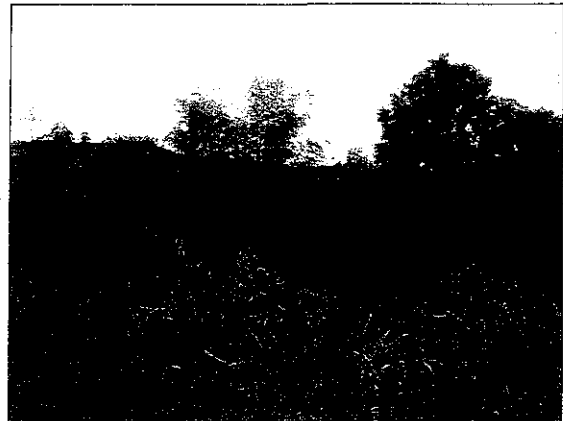
P01-(1)



P01-(2)



P01-(3)



P01-(4)



P02-(1)



P02-(2)



P02-(3)



P02-(4)

PH-4 Photographs of satellite image ground truth sites(1)



P03-(1)



P03-(2)



P03-(3)



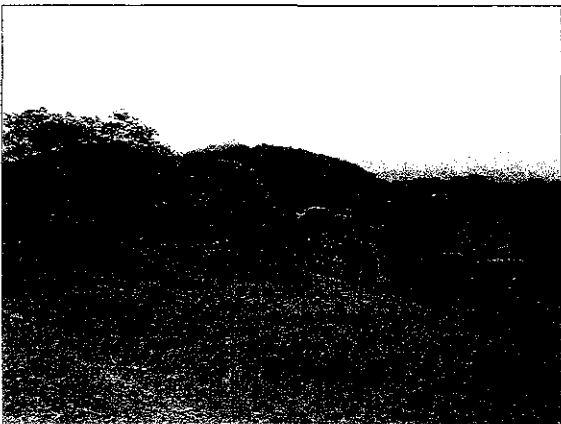
P03-(4)



P04-(1)



P04-(2)



P04-(3)



P04-(4)

PH-4 Photographs of satellite image ground truth sites(2)



P05-(1)



P05-(2)



P05-(3)



P05-(4)



P06-(1)



P06-(2)



P06-(3)



P06-(4)

PH-4 Photographs of satellite image ground truth sites(3)



P07-(1)



P07-(2)



P07-(3)



P07-(4)



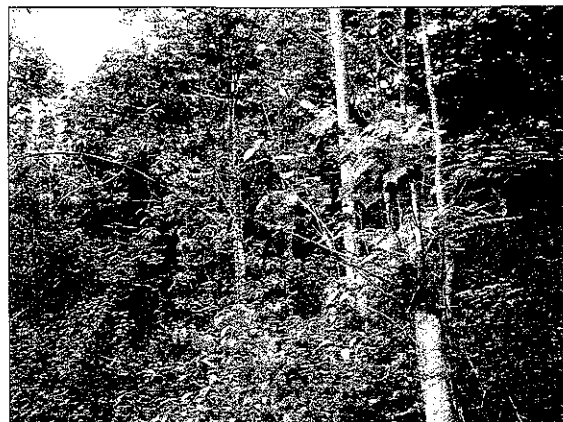
P08-(1)



P08-(2)

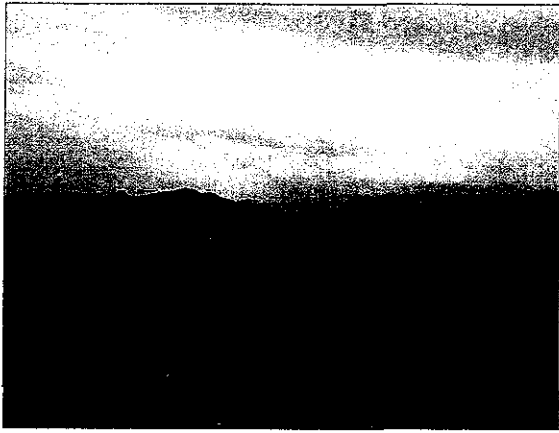


P08-(3)

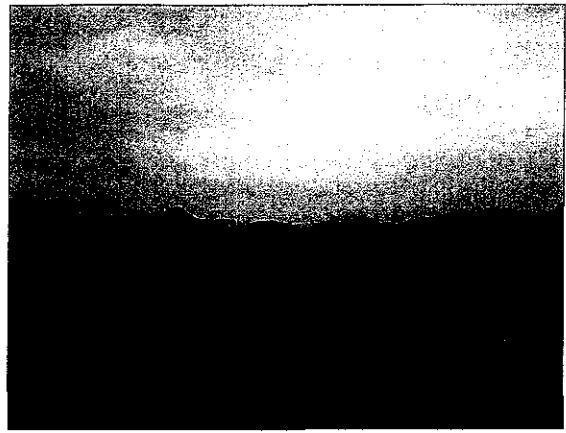


P08-(4)

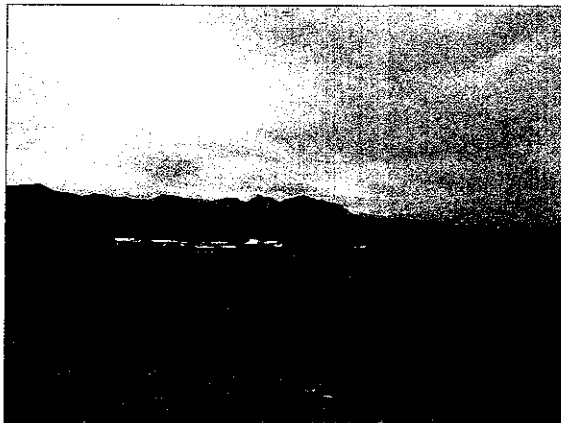
PH-4 Photographs of satellite image ground truth sites(4)



P09-(1)



P09-(2)



P09-(3)



P09-(4)



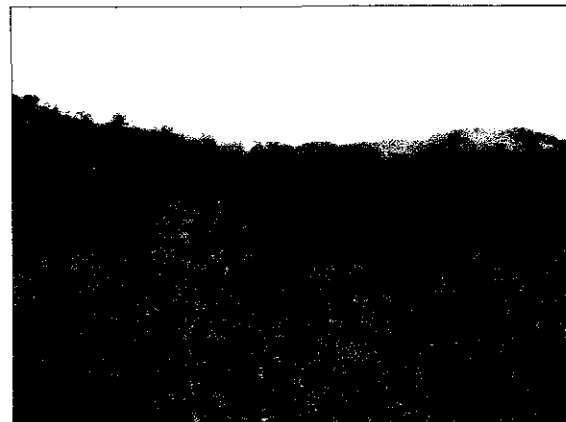
P10-(1)



P10-(2)

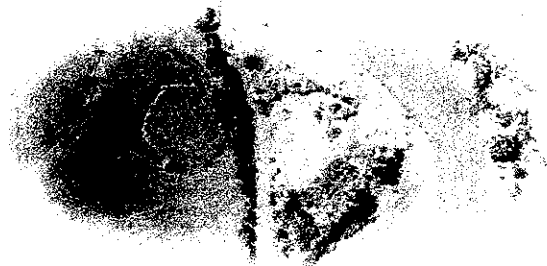


P10-(3)



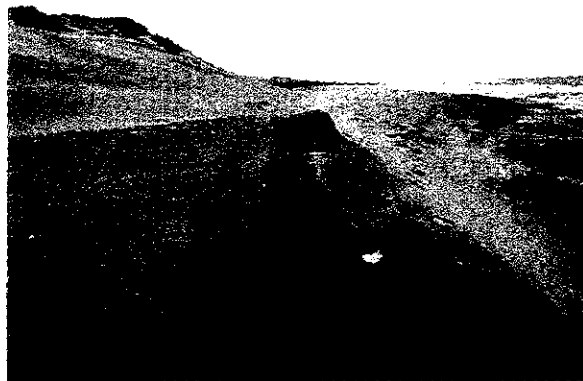
P10-(4)

PH-4 Photographs of satellite image ground truth sites(5)

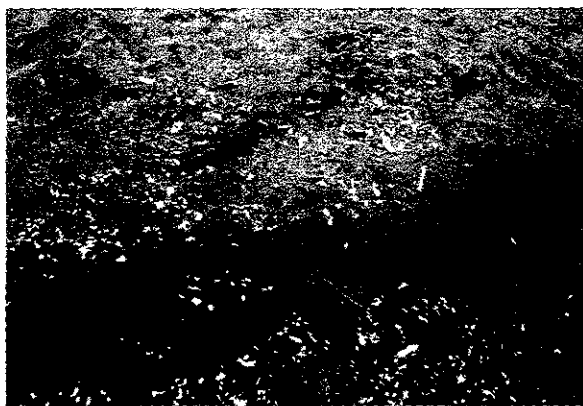


RING-DITCH FORTIFICATIONS
IN THE NAVUA DELTA, FIJI:
AIR PHOTO INTERPRETATION
AND ANALYSIS

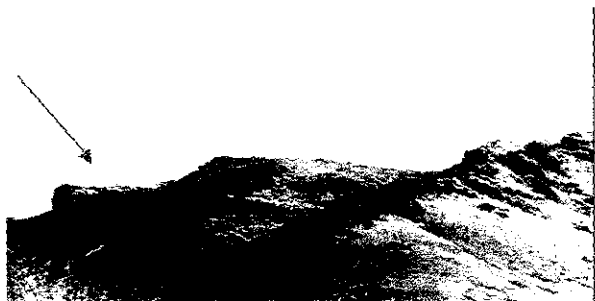
Ring Ditch(Navua Delta)



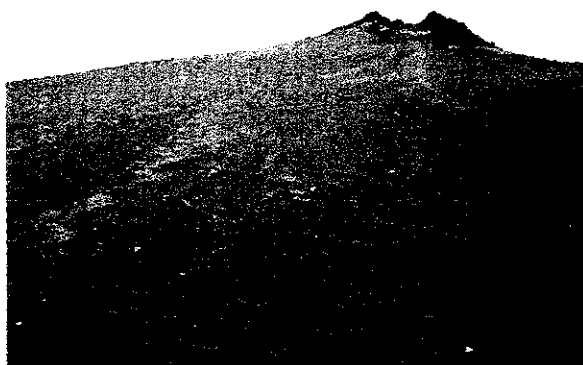
Sigatoka Sand Dunes



Sigatoka Sand Dunes - Stratified Site



Drenabukete Site (Hill Fort) - Keiyasi

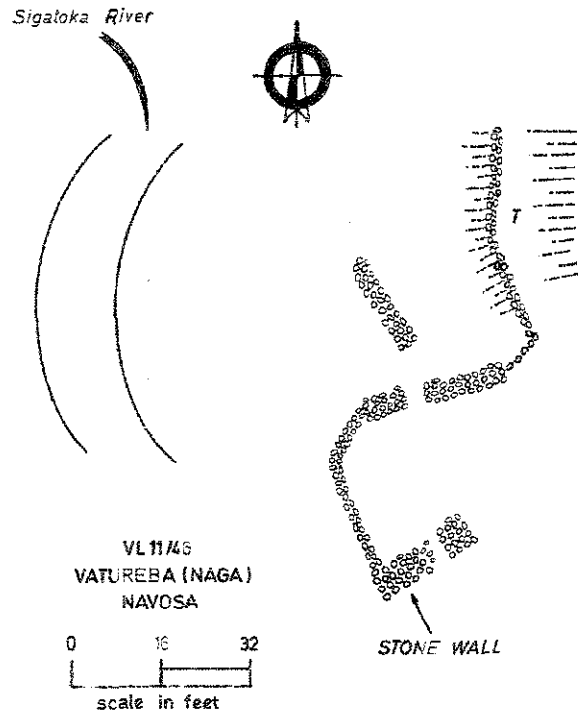


Sigatoka Sand Dunes - Lapita Site

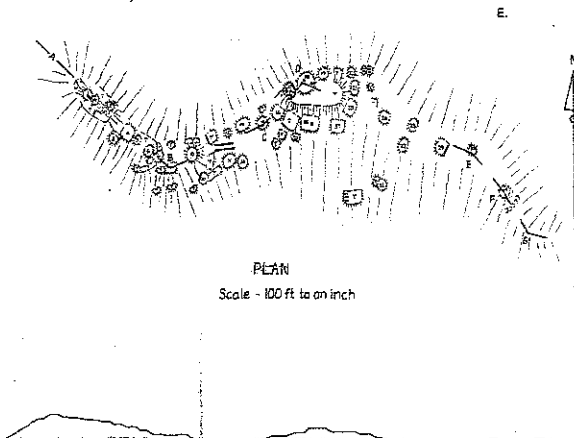
PH-5 Photographs and Illustrations of the archaeological sites (1)



Tatuba Cave - Keiyasi Area



Naga Site (Archaeological Map) - Keiyasi Area



Tavuni Hill Fort (Archaeological Map) -
Sigatoka Area



Naga Site (Photograph) - Keiyasi Area