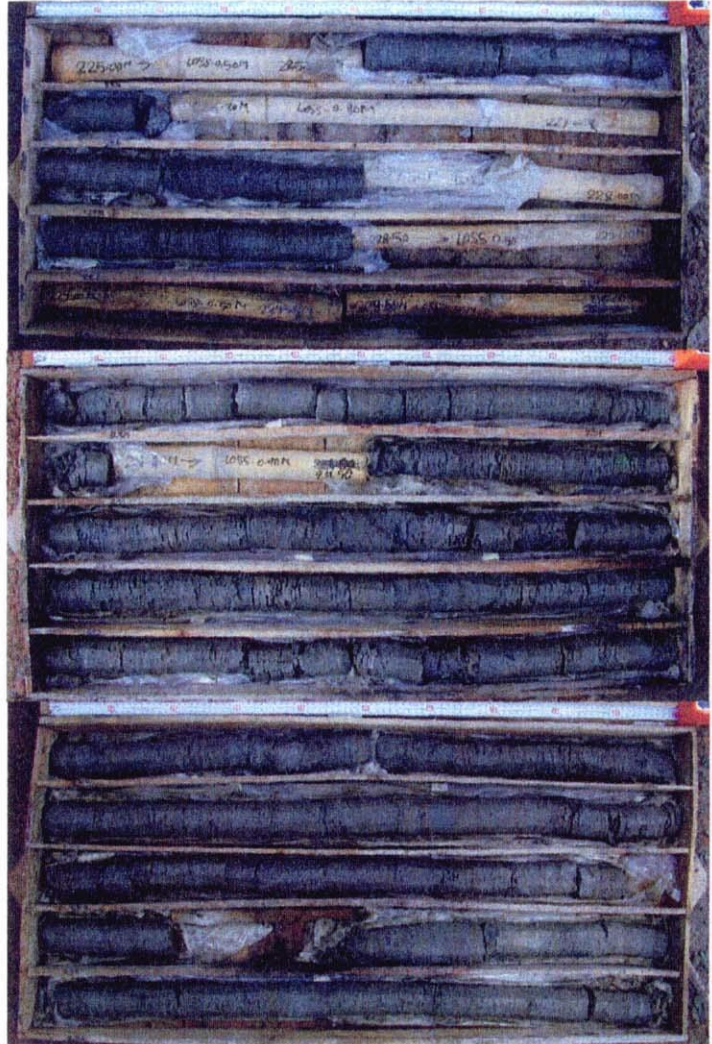




215m

220m

225m



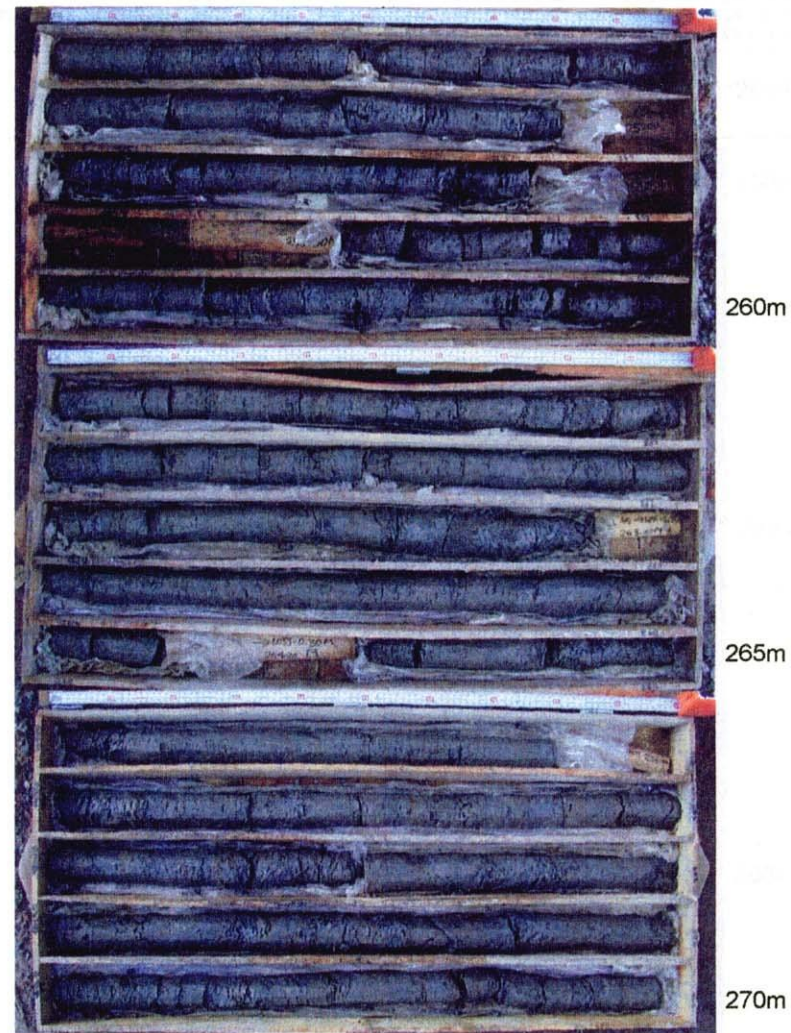
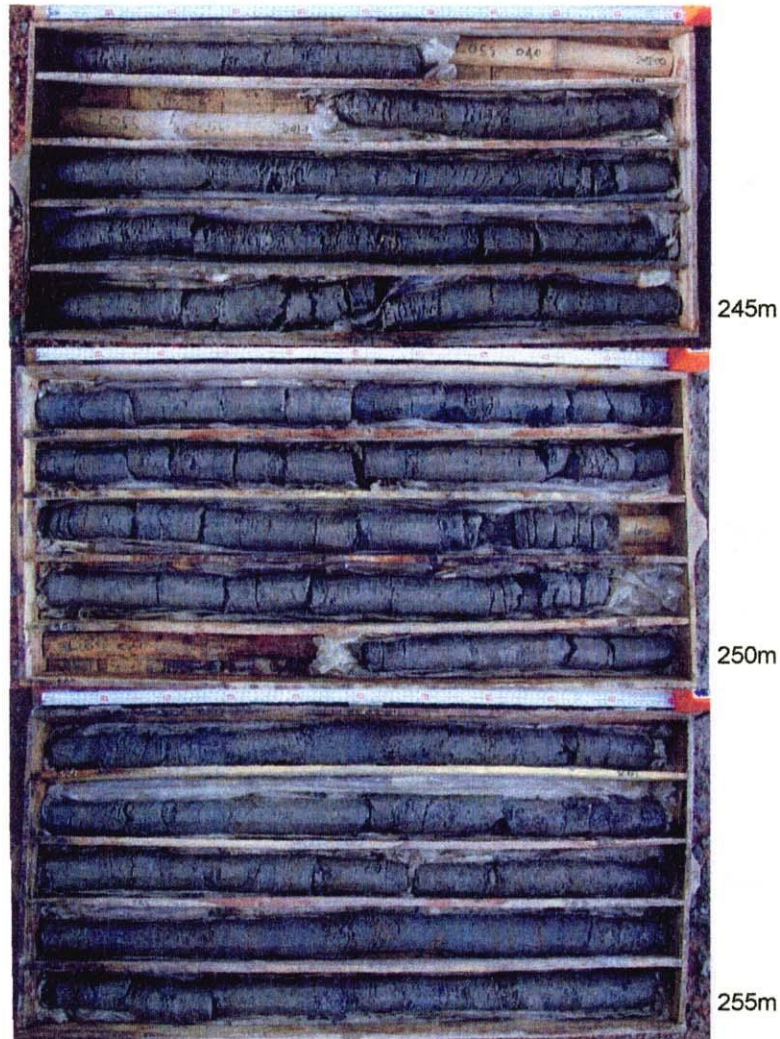
230m

235m

240m



<b>Figure 2.4.8</b>	<b>JH-KC (Krishna Chandrapur) 210-240m</b>
<b>THE STUDY ON THE GROUNDWATER DEVELOPMENT OF DEEP AQUIFERS FOR SAFE DRINKING WATER SUPPLY TO ARSENIC AFFECTED AREAS IN WESTERN BANGLADESH</b>	
JAPAN INTERNATIONAL COOPERATION AGENCY (JICA)	



<b>Figure 2.4.9</b>	<b>JH-KC (Krishna Chandrapur) 240-270m</b>
<b>THE STUDY ON THE GROUNDWATER DEVELOPMENT OF DEEP AQUIFERS FOR SAFE DRINKING WATER SUPPLY TO ARSENIC AFFECTED AREAS IN WESTERN BANGLADESH</b>	
JAPAN INTERNATIONAL COOPERATION AGENCY (JICA)	



275m

280m

285m



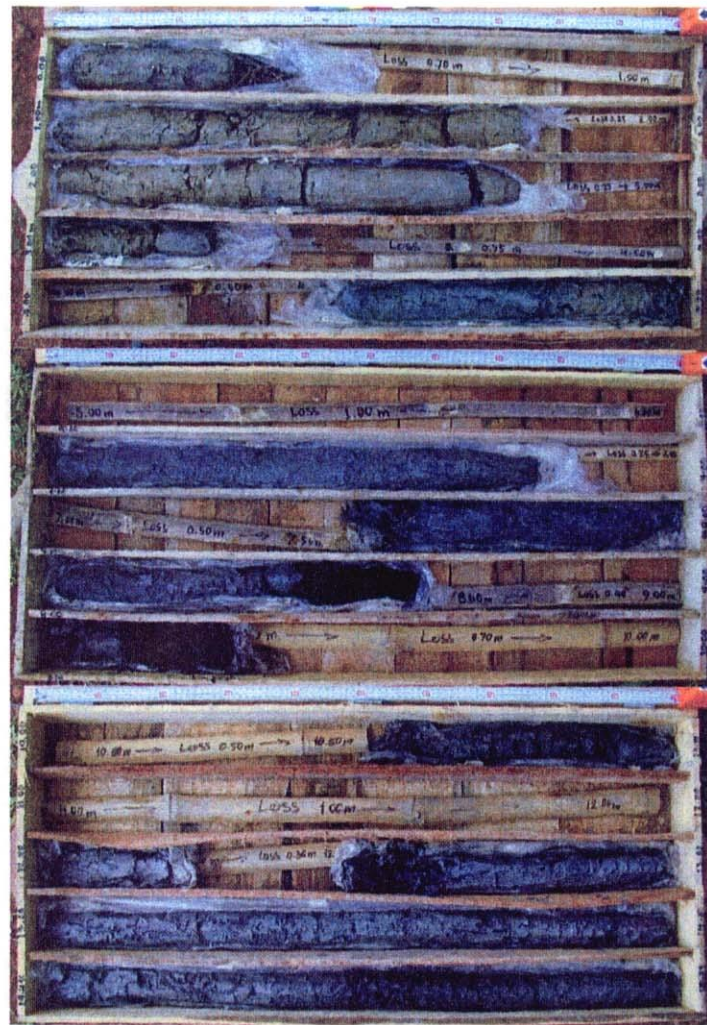
290m

295m

300m



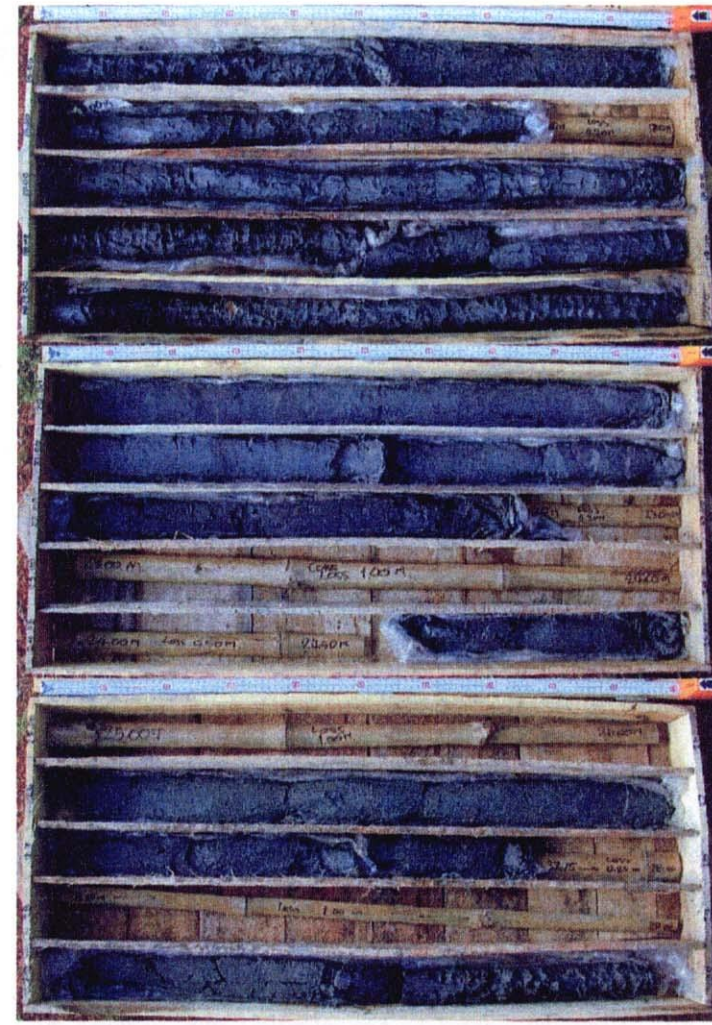
<b>Figure 2.4.10</b>	<b>JH-KC (Krishna Chandrapur) 270-300m</b>
<b>THE STUDY ON THE GROUNDWATER DEVELOPMENT OF DEEP AQUIFERS FOR SAFE DRINKING WATER SUPPLY TO ARSENIC AFFECTED AREAS IN WESTERN BANGLADESH</b>	
JAPAN INTERNATIONAL COOPERATION AGENCY (JICA)	



5m

10m

15m



20m

25m

30m

**Figure 2.5.1**

**JS-2 (Kharki) 0-30m**

**THE STUDY ON THE GROUNDWATER DEVELOPMENT OF DEEP AQUIFERS FOR SAFE DRINKING WATER SUPPLY TO ARSENIC AFFECTED AREAS IN WESTERN BANGLADESH**

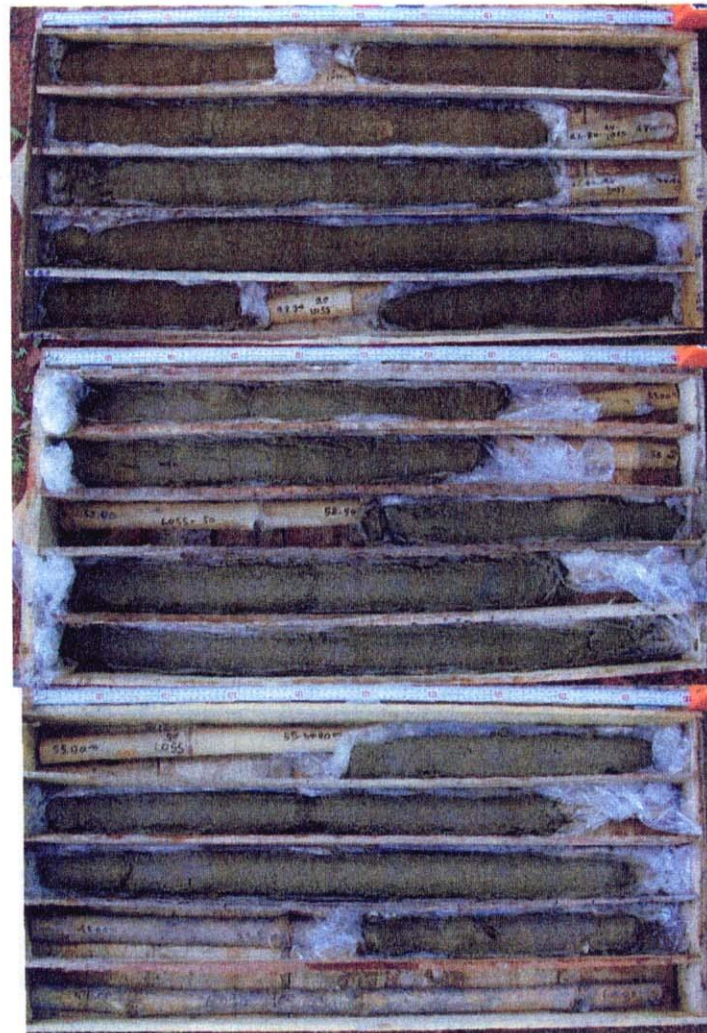
JAPAN INTERNATIONAL COOPERATION AGENCY (JICA)



35m

40m

45m



50m

55m

60m



**Figure 2.5.2**

**JS-2 (Kharki) 30-60m**

**THE STUDY ON THE GROUNDWATER DEVELOPMENT OF DEEP AQUIFERS FOR SAFE DRINKING WATER SUPPLY TO ARSENIC AFFECTED AREAS IN WESTERN BANGLADESH**

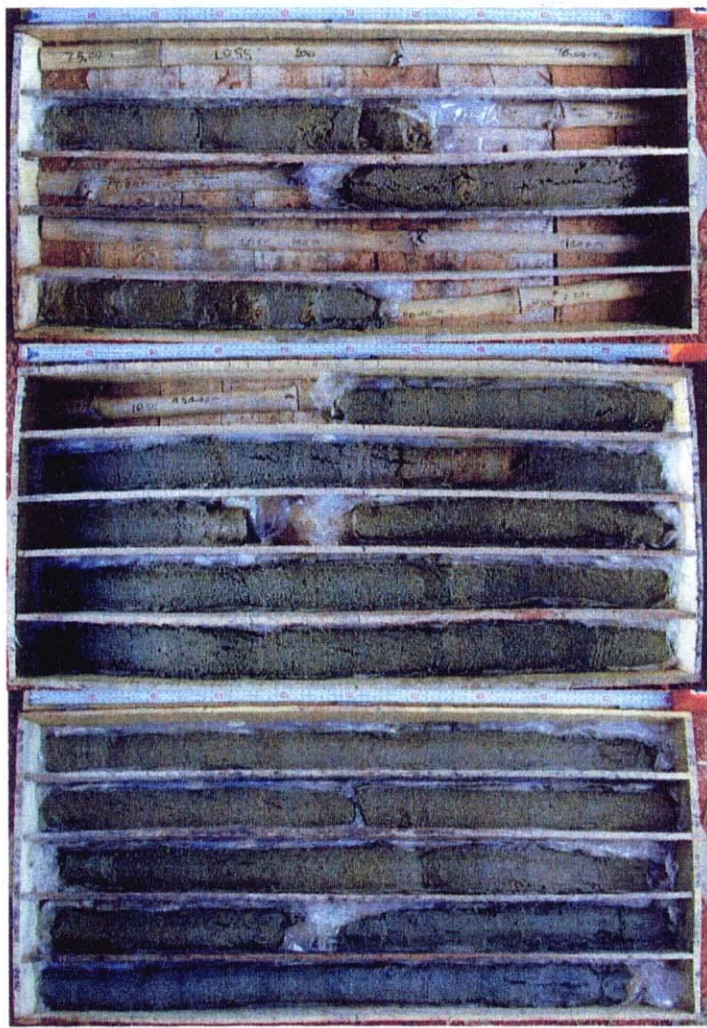
JAPAN INTERNATIONAL COOPERATION AGENCY (JICA)



65m

70m

75m



80m

85m

90m



<b>Figure 2.5.3</b>	<b>JS-2 (Kharki) 60-90m</b>
<b>THE STUDY ON THE GROUNDWATER DEVELOPMENT OF DEEP AQUIFERS FOR SAFE DRINKING WATER SUPPLY TO ARSENIC AFFECTED AREAS IN WESTERN BANGLADESH</b>	
JAPAN INTERNATIONAL COOPERATION AGENCY (JICA)	