

JAPAN INTERNATIONAL COOPERATION AGENCY (JICA)

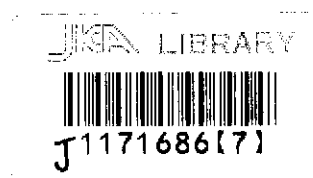
ECONOMIC RELATIONS DIVISION, MINISTRY OF FINANCE
DEPARTMENT OF PUBLIC HEALTH ENGINEERING, MINISTRY OF LOCAL
GOVERNMENT, RURAL DEVELOPMENT & COOPERATIVES
THE GOVERNMENT OF THE PEOPLE'S REPUBLIC OF BANGLADESH

THE STUDY
ON THE GROUND WATER DEVELOPMENT
OF DEEP AQUIFERS FOR SAFE DRINKING WATER
SUPPLY TO ARSENIC AFFECTED AREAS IN
WESTERN BANGLADESH

FINAL REPORT

DATA REPORT BOOK 1

DECEMBER 2002



KOKUSAI KOGYO CO., LTD.
mitsui MINERAL DEVELOPMENT ENGINEERING CO., LTD.

SSS
JR
02-150

JAPAN INTERNATIONAL COOPERATION AGENCY (JICA)

ECONOMIC RELATIONS DIVISION, MINISTRY OF FINANCE
DEPARTMENT OF PUBLIC HEALTH ENGINEERING, MINISTRY OF LOCAL
GOVERNMENT, RURAL DEVELOPMENT & COOPERATIVES
THE GOVERNMENT OF THE PEOPLE'S REPUBLIC OF BANGLADESH

THE STUDY

***ON THE GROUND WATER DEVELOPMENT
OF DEEP AQUIFERS FOR SAFE DRINKING WATER
SUPPLY TO ARSENIC AFFECTED AREAS IN
WESTERN BANGLADESH***

FINAL REPORT

DATA REPORT BOOK 1

DECEMBER 2002

**KOKUSAI KOGYO CO., LTD.
MITSUI MINERAL DEVELOPMENT ENGINEERING CO., LTD.**



1171686[7]

The Study on the
Ground Water Development of Deep Aquifers for Safe Drinking Water Supply to
Arsenic Affected Areas in Western Bangladesh

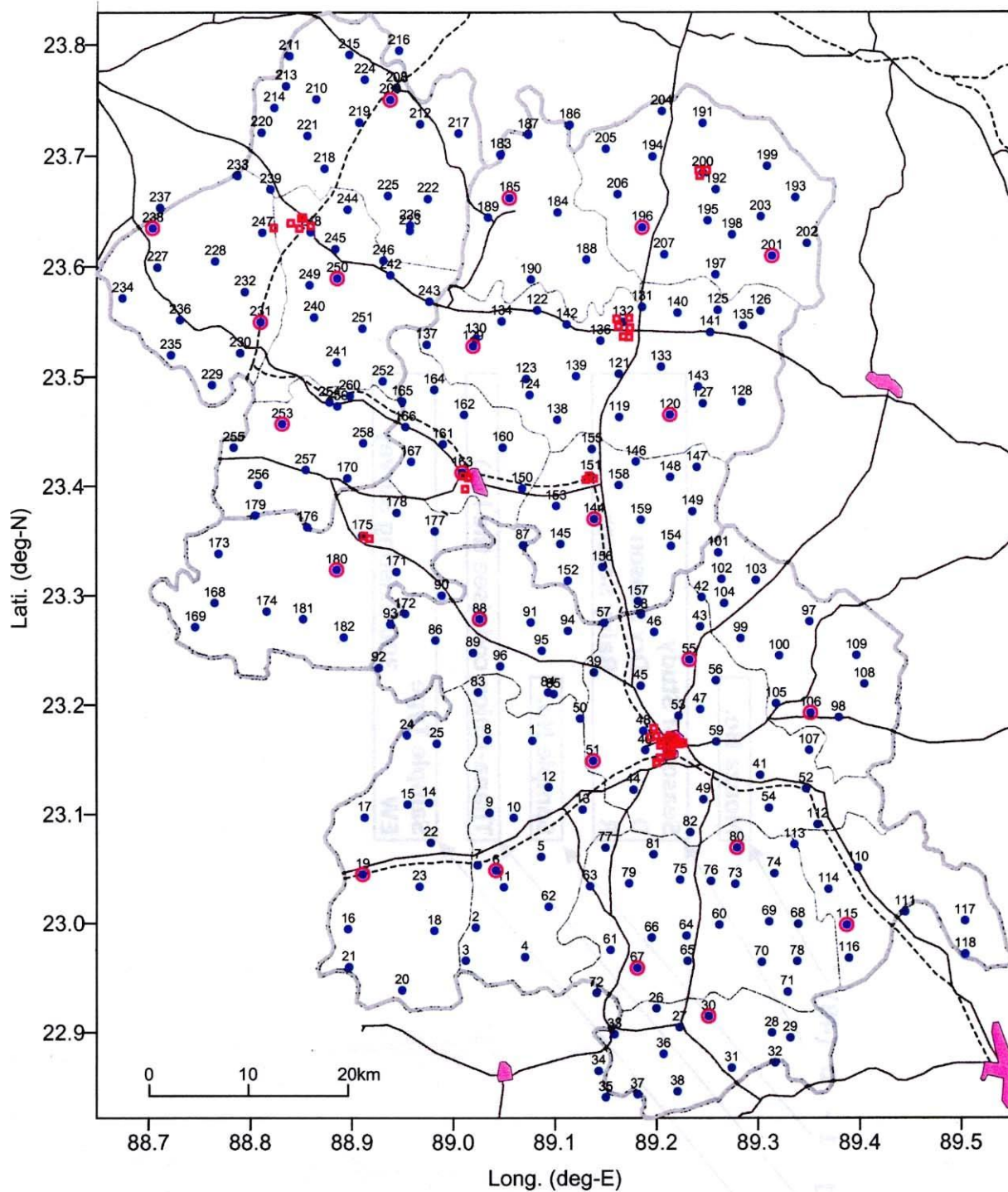
Data Report Book 1

TABLE OF CONTENTS

- 1. Water Quality Analysis Data**
 - 1.1 300 Existing Wells Survey
 - 1.2 Baseline Survey
 - 1.3 Arsenic Removal Equipment
 - 1.4 Core Boring
 - 1.5 Improved Deep Well
 - 1.6 Observation Wells
 - 1.7 Screening Survey
 - 1.8 Quality Control
 - 1.9 Row Data other than Arsenic
- 2. Core Sample Photograph**
- 3. Pumping Test Data**
- 4. Geophysical Prospecting Data**

1. Water Quality Analysis Data

1.1 300 Existing Wells Survey



- Existing Shallow Tubewell with Serial No.
- ◻ Pourashava Production Wells
- Sample Taken for General Water Quality Analysis

Figure 1.1.1	Location of 300 Existing Wells
THE STUDY ON THE GROUNDWATER DEVELOPMENT OF DEEP AQUIFERS FOR SAFE DRINKING WATER SUPPLY TO ARSENIC AFFECTED AREAS IN WESTERN BANGLADESH	
JAPAN INTERNATIONAL COOPERATION AGENCY (JICA)	

Sample Code

EW - JKPj 1 - D (48)

Mouza No.

Season of Study

D Dry Season

R Rainy Season

Sample No.

Thana-Union code(see the list)

Sample Type

EW 300 Existing Survey

Table 1.1.1

Results of 300 Existing Wells Survey in Rainy Season [June to July 2000] (1/6)

No.	Well No.	District	Thana	Lat. (deg-N)	Long. (deg-E)	Well depth (m)	As by FK (mg/l)	As by AAS (mg/l)	EC (mS/m)	Fe ²⁺ (mg/l)	pH (SU)	ORP (mV)	W-Temp (deg-C)	Eh (mV)	DTW (GL- m)	GL (masl)	GWL (masl)
1	EW-JHMg1-R (48)	Jessore	Jhikargachha	23.18722	89.07833	41.43	0.4	0.25	98.7	2	6.94	-118	27.0	86.9	5.08	7.20	2.12
2	EW-JHHz1-R (138)	Jessore	Jhikargachha	22.98611	89.02194	36.79	0.02	0.047	74.7	2	7.15	-90	27.5	114.6	4.52	5.71	1.19
3	EW-JHSk1-R (146)	Jessore	Jhikargachha	22.96583	89.01194	41.42	0.01	0.025	71.5	2	7.05	-127	27.0	77.9	3.59	5.46	1.87
4	EW-JHBk1-R (156)	Jessore	Jhikargachha	22.96889	89.07056	47.32	0.3	0.18	80.4	5	6.88	-94	28.3	110.0	3.79	5.86	2.07
5	EW-JHPn1-R (93)	Jessore	Jhikargachha	23.06083	89.06667	41.65	0.01	0.13	77.3	2	7.23	-99	27.3	105.7	3.85	6.85	3.00
6	EW-JHNh1-R (105)	Jessore	Jhikargachha	23.04833	89.04194	50.39	0.4	0.44	80.7	10	6.93	-116	27.2	88.8	4.30	7.10	2.80
7	EW-JHNh1-R (108)	Jessore	Jhikargachha	23.05333	89.02417	38.10	0	0.038	97.6	2	6.98	-95	27.1	109.9	3.62	5.92	2.30
8	EW-JHGg1-R (08)	Jessore	Jhikargachha	23.16806	89.03417	47.02	0.2	0.26	71.3	5	7.03	-126	26.9	79.0	5.87	6.23	0.36
9	EW-JHSm 1-R (28)	Jessore	Jhikargachha	23.10139	89.03583	37.33	0.2	0.28	74.2	5	6.95	-127	27.4	77.6	3.02	5.88	2.86
10	EW-JHGd1-R (30)	Jessore	Jhikargachha	23.08667	89.05944	36.05	0	0.024	82.2	2	7.11	-109	27.0	95.9	4.29	7.24	2.95
11	EW-JHNs 1-R (124)	Jessore	Jhikargachha	23.03306	89.04972	44.34	0.03	0.046	74.9	5	7.17	-96	26.8	109.5	3.95	7.17	3.22
12	EW-JHJk1-R (35)	Jessore	Jhikargachha	23.12472	89.09417	31.58	0.3	0.14	97.9	5	6.92	-134	27.4	70.6	5.22	7.28	2.06
13	EW-JHJk1-R (62)	Jessore	Jhikargachha	23.10417	89.12778	26.28	0.02	0.012	69.5	2	7.01	-116	27.3	88.7	5.45	6.22	0.77
14	EW-JSNz1-R (62)	Jessore	Sharsha	23.11056	88.97611	37.41	0.3	0.13	60.2	5	7.19	107	27.3	311.7	3.21	5.51	2.30
15	EW-JSLk1-R (33)	Jessore	Sharsha	23.10899	88.95500	40.09	0.03	0.025	65.2	2	6.72	-90	27.2	114.8	2.60	4.72	2.12
16	EW-JSPt1-R (92)	Jessore	Sharsha	22.99472	88.89611	40.67	0.4	0.13	78.1	5	7.07	-135	27.7	69.4	3.48	3.77	0.29
17	EW-JSBn1-R (37)	Jessore	Sharsha	23.08694	88.91250	30.25	0.01	0.022	49.1	0.5	6.99	-67	27.8	137.4	3.35	4.39	1.04
18	EW-JSBg1-R (126)	Jessore	Sharsha	22.99306	88.98111	37.99	0.5	0.15	62.9	10	6.99	-121	27.9	83.3	3.72	5.34	1.62
19	EW-JSBn1-R (68)	Jessore	Sharsha	23.04472	88.91056	39.84	0.01	0.014	65.9	2	7.13	-119	27.5	85.6	4.10	4.47	0.37
20	EW-JSKb1-R (132)	Jessore	Sharsha	22.93889	88.94917	27.46	0.3	0.1	92.7	10	7.77	-123	28.2	81.1	4.20	4.89	0.69
21	EW-JSGg1-R (114)	Jessore	Sharsha	22.95991	88.89694	41.67	0.5	0.34	78.6	5	7.04	-134	27.8	70.4	4.44	5.79	1.35
22	EW-JSSs1-R (75)	Jessore	Sharsha	23.07389	88.97778	33.95	0.01	0.071	85.2	5	6.90	-100	27.3	104.7	2.82	5.34	2.52
23	EW-JSUI 1-R (99)	Jessore	Sharsha	23.03361	88.96667	32.18	0.05	0.069	55.2	2	6.98	-117	27.0	87.9	3.80	6.47	2.67
24	EW-JSDh1-R (01)	Jessore	Sharsha	23.17222	88.95444	37.00	0.02	0.031	73.2	5	6.85	-81	27.4	123.6	3.90	5.22	1.32
25	EW-JSDh1-R (8)	Jessore	Sharsha	23.16472	88.98389	37.01	0.04	0.069	67.1	2	6.60	-89	27.4	115.6	3.95	4.09	0.14
26	EW-JKks1-R (26)	Jessore	Keshabpur	22.92189	89.19978	42.31	0.01	0.13	88.2	5	6.75	-96	27.5	108.6	4.28	4.10	-0.18
27	EW-JKks1-R (72)	Jessore	Keshabpur	22.90472	89.22278	43.76	0.4	0.2	105.9	2	7.10	-142	28.7	61.7	2.57	2.96	0.39
28	EW-JKfs1-R (121)	Jessore	Keshabpur	22.89963	89.31333	42.82	0.03	0.026	71.0	1	7.26	-114	27.6	90.5	2.49	2.28	-0.21
29	EW-JKfs1-R (128)	Jessore	Keshabpur	22.89519	89.33139	45.70	0	<0.0005	73.3	0.1	7.29	32	27.7	236.4	2.22	1.49	-0.73
30	EW-JKpj1-R (102)	Jessore	Keshabpur	22.91472	89.25111	46.52	1	0.52	199.9	0.1	7.15	-161	27.0	43.9	2.56	1.94	-0.62
31	EW-JKMg1-R (97)	Jessore	Keshabpur	22.86759	89.27389	36.12	0.6	0.19	88.2	2	6.93	-124	27.9	80.3	2.20	1.88	-0.32
32	EW-JKGr1-R (135)	Jessore	Keshabpur	22.87241	89.31639	45.01	0	<0.0005	99.2	0.1	7.35	3	27.6	207.5	2.03	1.39	-0.64
33	EW-JKtm1-R (111)	Jessore	Keshabpur	22.89833	89.15861	40.98	0.01	0.0077	69.3	5	7.06	-93	27.0	111.9	2.59	3.87	1.28
34	EW-JKsg1-R (17)	Jessore	Keshabpur	22.86472	89.14306	40.62	0.3	0.17	84.9	5	6.97	-113	26.8	92.1	3.39	3.26	-0.13
35	EW-JKsg1-R (41)	Jessore	Keshabpur	22.84056	89.15000	35.28	0.01	0.077	93.4	10	6.68	-108	26.8	97.1	2.97	3.40	0.43
36	EW-JKMj1-R (65)	Jessore	Keshabpur	22.88026	89.20694	46.36	0	0.058	87.7	5	7.00	-109	26.7	96.1	1.90	2.93	1.03
37	EW-JKBn1-R (51)	Jessore	Keshabpur	22.84333	89.18139	21.33	0.03	0.073	124.0	10	6.76	-120	27.0	84.9	1.91	3.52	1.61
38	EW-JKBn1-R (88)	Jessore	Keshabpur	22.84611	89.22066	43.31	0.02	0.079	76.8	2	7.01	-116	27.7	88.4	1.12	1.45	0.33
39	EW-JJCr1-R (13)	Jessore	Jessore Sadar	23.22954	89.13917	46.57	0.1	0.09	40.1	1	7.31	-102	26.2	103.5	6.22	7.61	1.39
40	EW-JJUs1-R (78)	Jessore	Jessore Sadar	23.15861	89.18944	48.40	1	0.25	81.3	10	6.99	-132	26.2	73.5	6.27	4.62	-1.65
41	EW-JJKo1-R (223)	Jessore	Jessore Sadar	23.13583	89.30222	46.80	0	<0.0005	85.4	0.1	7.01	81	25.7	286.9	5.98	5.90	-0.08
42	EW-JJLb1-R (156)	Jessore	Jessore Sadar	23.29833	89.24500	48.50	0.01	0.011	84.0	2	7.10	-73	26.5	132.3	6.53	4.81	-1.92
43	EW-JJLb1-R (182)	Jessore	Jessore Sadar	23.27139	89.24333	49.00	0.01	0.0058	83.0	2	7.11	-72	24.5	134.7	6.76	6.10	-0.66
44	EW-JJCC1-R (59)	Jessore	Jessore Sadar	23.12250	89.17778	42.20	0.9	0.13	92.3	5	6.98	-123	26.4	82.4	4.30	4.36	0.06
45	EW-JJKs1-R (113)	Jessore	Jessore Sadar	23.21722	89.18500	45.07	0	<0.0005	72.4	0.2	7.14	71	26.6	278.2	6.93	7.28	0.35
46	EW-JJKs1-R (136)	Jessore	Jessore Sadar	23.26639	89.19824	46.40	0	<0.0005	68.3	0.1	7.14	104	26.8	309.1	6.01	6.56	0.55
47	EW-JJNp1-R (195)	Jessore	Jessore Sadar	23.19583	89.24333	47.23	0	<0.0005	86.3	0.2	7.16	76	27.4	280.6	5.87	5.47	-0.40
48	EW-JJA1-R (95)	Jessore	Jessore Sadar	23.17611	89.18778	40.37	0	0.0038	73.5	0.2	7.15	8	26.8	213.1	4.25	6.52	2.27
49	EW-JJRn1-R (214)	Jessore	Jessore Sadar	23.11361	89.24639	45.00	0	<0.0005	103.2	0.5	7.25	60	29.9	262.8	4.97	4.55	-0.42
50	EW-JJDd1-R (22)	Jessore	Jessore Sadar	23.18750	89.12528	44.28	0	<0.0005	114.2	0.1	7.10	119	27.0	323.9	5.53	5.77	0.24

Table 1.1.1

Results of 300 Existing Wells Survey in Rainy Season [June to July 2000] (2/6)

No.	Well No.	District	Thana	Lat. (deg-N)	Long. (deg-E)	Well depth (m)	As by FK (mg/l)	As by AAS (mg/l)	EC (mS/m)	Fe ²⁺ (mg/l)	pH (SU)	ORP (mV)	W-Temp (deg-C)	Eh (mV)	DTW (GL- m)	GL (mast)	GWL (mast)
51	EW-JJDa1-R (38)	Jessore	Jessore Sadar	23.14889	89.13806	47.04	0	0.0007	76.0	0.1	7.18	211	26.4	416.4	5.55	7.06	1.51
52	EW-JJBs1-R (247)	Jessore	Jessore Sadar	23.12333	89.34750	27.00	0.04	0.08	96.9	10	7.17	-83	28.1	121.1	5.04	4.34	-0.70
53	EW-JJNp1-R (104)	Jessore	Jessore Sadar	23.19000	89.22222	46.30	0	<0.0005	71.7	0.1	7.25	90	28.8	295.1	6.18	6.64	0.46
54	EW-JJNr1-R (240)	Jessore	Jessore Sadar	23.10583	89.31083	41.90	0	<0.0005	157.6	0.2	7.18	56	27.4	260.6	5.88	3.78	-2.10
55	EW-JJlc1-R (170)	Jessore	Jessore Sadar	23.24111	89.23278	46.56	0	0.001	91.1	0	7.23	84	28.4	287.9	5.32	6.17	0.85
56	EW-JJlc1-R (186)	Jessore	Jessore Sadar	23.22222	89.25880	49.00	0	<0.0005	83.2	0.2	7.09	42	26.5	247.3	6.41	4.88	-1.53
57	EW-JJHb1-R (122)	Jessore	Jessore Sadar	23.27463	89.14889	43.85	0	0.0009	77.6	1	7.20	31	27.0	235.9	4.28	8.27	3.99
58	EW-JJHb1-R (128)	Jessore	Jessore Sadar	23.28250	89.18528	25.37	0.2	0.1	80.9	2	7.08	-80	26.3	125.4	6.08	6.22	0.14
59	EW-JJFL1-R (205)	Jessore	Jessore Sadar	23.16839	89.25917	43.50	0	<0.0005	112.5	0.5	7.18	13	28.0	217.2	5.71	5.95	0.24
60	EW-JMKp1-R (157)	Jessore	Manirampur	22.99861	89.26167	42.76	0.07	0.032	79.6	2	6.96	-125	27.6	79.5	3.77	3.05	-0.72
61	EW-JMUp1-R (174)	Jessore	Manirampur	22.97556	89.15472	46.80	0.01	0.053	42.3	2	7.16	-107	28.5	96.8	2.61	4.71	2.10
62	EW-JMh1-R (25)	Jessore	Manirampur	23.01500	89.09389	40.03	0.02	0.078	59.0	2	7.16	-112	27.5	92.6	2.52	5.88	3.36
63	EW-JMh1-R (35)	Jessore	Manirampur	23.03389	89.13472	27.85	1	0.41	63.7	10	7.02	-127	26.7	78.1	4.90	6.70	1.80
64	EW-JMSm1-R (160)	Jessore	Manirampur	22.98833	89.22944	46.94	0.04	0.042	56.6	2	7.14	-136	26.9	69.0	2.85	4.68	1.83
65	EW-JMSm1-R (210)	Jessore	Manirampur	22.96528	89.23056	48.10	0.3	0.18	99.6	5	6.97	-129	26.8	76.1	2.63	4.42	1.79
66	EW-JMCI1-R (198)	Jessore	Manirampur	22.98667	89.19528	40.75	0.02	0.02	111.2	5	6.91	-111	28.5	92.8	1.43	3.97	2.54
67	EW-JMCI1-R (201)	Jessore	Manirampur	22.95889	89.18111	47.42	0.01	0.048	75.4	5	7.07	-116	27.6	88.5	2.92	4.03	1.11
68	EW-JMKI1-R (141)	Jessore	Manirampur	22.99917	89.33917	41.60	0	0.0066	178.7	2	7.10	-126	28.8	77.6	1.81	1.04	-0.77
69	EW-JMKI1-R (148)	Jessore	Manirampur	23.00139	89.31083	50.24	0.1	0.08	199.9	10	6.89	-121	28.0	83.2	2.12	1.63	-0.49
70	EW-JMDb1-R (227)	Jessore	Manirampur	22.96444	89.30333	47.84	0	0.0065	166.7	0.1	7.09	41	28.8	244.6	1.92	1.73	-0.19
71	EW-JMh1-R (239)	Jessore	Manirampur	22.93722	89.32889	56.79	0	<0.0005	145.5	0.5	7.14	108	28.0	312.2	2.22	1.45	-0.77
72	EW-JMS1-R (186)	Jessore	Manirampur	22.93611	89.14083	43.43	0	0.0025	82.7	2	7.20	-97	27.6	107.5	4.54	5.49	0.95
73	EW-JMHd1-R (108)	Jessore	Manirampur	23.03583	89.27750	51.65	0	<0.0005	78.8	0.1	7.14	108	27.4	312.6	1.94	2.57	0.63
74	EW-JMHd1-R (138)	Jessore	Manirampur	23.04556	89.31583	51.46	0	<0.0005	151.2	0.1	7.24	52	27.6	256.5	1.77	1.90	0.13
75	EW-JMUr1-R (91)	Jessore	Manirampur	23.03333	89.22333	31.11	0.1	0.075	69.5	10	7.01	-104	26.7	101.1	3.44	4.92	1.48
76	EW-JMUr1-R (101)	Jessore	Manirampur	23.03861	89.25361	46.92	0.1	0.07	61.7	5	7.01	-138	27.1	66.9	3.56	4.33	0.77
77	EW-JMPh1-R (13)	Jessore	Manirampur	23.06917	89.15000	42.50	0.01	0.015	82.8	10	6.85	-119	26.3	86.4	2.68	5.94	3.26
78	EW-JMh1-R (244)	Jessore	Manirampur	22.96500	89.33833	52.63	0	<0.0005	137.6	0.1	7.24	32	28.5	235.8	2.88	2.19	-0.69
79	EW-JMKd1-R (51)	Jessore	Manirampur	23.03639	89.17306	36.01	0	0.0104	40.6	0.5	7.43	-105	26.7	100.1	3.79	4.86	1.07
80	EW-JMDk1-R (124)	Jessore	Manirampur	23.06917	89.27917	36.98	0.2	0.11	96.7	2	7.07	-124	27.4	80.6	2.76	3.71	0.95
81	EW-JMKs1-R (71)	Jessore	Manirampur	23.06306	89.19722	52.11	0.04	0.065	70.4	2	7.11	-114	28.2	90.1	4.70	5.99	1.29
82	EW-JMB1-R (81)	Jessore	Manirampur	23.08333	89.23333	45.05	0.01	0.031	64.8	5	7.25	-114	27.2	90.8	3.06	4.63	1.57
83	EW-JCDI1-R (181)	Jessore	Chougachha	23.21139	89.02472	41.20	0.02	0.046	118.3	2	6.52	-79	27.0	125.9	6.82	6.61	-0.21
84	EW-JCPs1-R (210)	Jessore	Chougachha	23.21111	89.09389	41.80	0	0.013	90.4	0.1	7.15	5	29.0	208.5	4.48	5.22	0.74
85	EW-JCPs1-R (215)	Jessore	Chougachha	23.20972	89.09917	26.33	0.04	0.13	67.5	5	6.98	-113	26.5	92.3	2.59	5.35	2.76
86	EW-JCSr1-R (198)	Jessore	Chougachha	23.25889	88.98278	43.32	0.1	0.194	59.1	2	7.03	-75	27.5	129.6	4.63	4.69	0.06
87	EW-JCHk1-R (54)	Jessore	Chougachha	23.34583	89.06917	46.62	0	0.011	71.2	0.2	7.30	90	27.5	294.6	4.94	9.40	4.46
88	EW-JCPI1-R (207)	Jessore	Chougachha	23.27833	89.02639	46.00	0.4	0.09	82.6	5	7.07	-90	28.5	113.8	4.15	7.62	3.47
89	EW-JCCg1-R (170)	Jessore	Chougachha	23.24750	89.01972	41.60	0.4	0.42	96.6	5	6.86	-51	28.0	153.2	4.78	4.95	0.17
90	EW-JCNr1-R (174)	Jessore	Chougachha	23.29990	88.98689	34.20	0.09	0.1	64.5	2	6.92	-89	27.1	115.9	5.90	8.27	2.37
91	EW-JCJr1-R (218)	Jessore	Chougachha	23.27509	89.07667	32.39	0.5	1	82.7	10	7.08	-161	27.0	43.9	5.79	7.39	1.60
92	EW-JCSk1-R (124)	Jessore	Chougachha	23.23389	88.92694	39.30	0.05	0.064	68.8	5	6.80	-82	27.7	122.4	3.15	5.96	2.81
93	EW-JCSk1-R (133)	Jessore	Chougachha	23.27361	88.93833	46.40	1	0.48	86.5	5	6.80	-75	28.1	129.1	6.22	7.62	1.40
94	EW-JCSk1-R (198)	Jessore	Chougachha	23.26750	89.11333	22.83	0.03	0.083	85.2	0.2	7.04	-106	26.6	99.2	5.35	7.40	2.05
95	EW-JCPI1-R (205)	Jessore	Chougachha	23.24944	89.08750	22.71	1	1.6	84.3	5	7.01	-122	26.5	83.3	5.47	7.34	1.87
96	EW-JCSg1-R (187)	Jessore	Chougachha	23.23528	89.04667	27.05	0.09	0.15	83.8	5	6.96	-115	26.8	90.1	4.95	7.85	2.90
97	EW-JBNr1-R (72)	Jessore	Bagherpara	23.27583	89.35083	49.50	0.01	0.036	88.3	0.2	7.18	79	26.5	283.8	4.51	3.76	-0.75
98	EW-JBd1-R (149)	Jessore	Bagherpara	23.18833	89.37972	44.69	0.2	0.22	76.6	5	7.02	-133	28.2	71.1	3.84	3.81	-0.03
99	EW-JBp1-R (54)	Jessore	Bagherpara	23.26065	89.28333	46.40	0	<0.0005	58.0	0.2	7.02	117	26.7	322.1	5.02	4.62	-0.40
100	EW-JBRp1-R (65)	Jessore	Bagherpara	23.24472	89.32111	45.70	0	<0.0005	83.0	0.2	6.78	75	27.0	279.9	5.34	4.19	-1.15

Table 1.1.1

Results of 300 Existing Wells Survey in Rainy Season [June to July 2000] (3/6)

No.	Well No.	District	Thana	Lat (deg-N)	Long. (deg-E)	Well depth (m)	As by FK (mg/l)	As by AAS (mg/l)	EC (mS/m)	Fe ²⁺ (mg/l)	pH (SU)	ORP (mV)	W-Temp (deg-C)	Eh (mV)	DTW (m)	GL (masl)	GL (masl)	GWL (masl)
101	EW-JBjH1-R (3)	Jessore	Bagherpara	23.33907	89.26150	52.00	0	0.0011	115.6	0.2	7.16	79	28.5	282.3	5.87	4.86	-1.01	
102	EW-JBjH1-R (30)	Jessore	Bagherpara	23.31472	89.26444	51.20	0.01	0.02	93.5	5	6.75	-95	28.0	109.2	5.57	5.91	0.34	
103	EW-JBBd1-R (15)	Jessore	Bagherpara	23.31389	89.29833	47.63	0.04	0.033	85.7	10	6.82	-115	27.5	89.6	5.18	4.92	-0.26	
104	EW-JBBd1-R (36)	Jessore	Bagherpara	23.29278	89.26722	47.63	0.04	0.041	72.4	5	6.81	-93	27.0	111.9	4.36	5.72	1.36	
105	EW-JBDr1-R (91)	Jessore	Bagherpara	23.20111	89.31806	43.73	0	0.0019	91.0	0.1	7.18	-38	26.9	167.0	5.03	3.57	-1.46	
106	EW-JBBs1-R (117)	Jessore	Bagherpara	23.19250	89.35194	52.09	0.2	0.12	56.0	5	7.14	-140	27.5	64.6	4.66	4.62	-0.04	
107	EW-JBBs1-R (132)	Jessore	Bagherpara	23.15881	89.35056	43.25	0	0.0012	44.6	0.1	7.28	-44	26.9	161.0	4.91	3.99	-0.92	
108	EW-JBDh1-R (108)	Jessore	Bagherpara	23.21889	89.40500	41.70	0.3	0.14	68.8	5	7.18	-142	27.7	62.4	2.84	3.30	0.46	
109	EW-JBDh1-R (102)	Jessore	Bagherpara	23.24500	89.39722	40.03	0.01	0.018	122.5	5	7.14	-130	27.7	74.4	4.16	2.99	-1.17	
110	EW-JASd1-R (4)	Jessore	Abhaynagar	23.05083	89.39824	47.67	0	0.0006	98.9	0.1	7.22	54	27.7	258.4	3.92	4.54	0.62	
111	EW-JABg1-R (12)	Jessore	Abhaynagar	23.01028	89.44472	45.46	0	0.0006	90.1	0.1	7.15	208	27.6	412.5	2.34	4.78	2.44	
112	EW-JAMh1-R (49)	Jessore	Abhaynagar	23.09056	89.35852	44.28	0	0.0007	76.0	0.1	7.22	188	26.7	393.1	3.92	2.95	-0.97	
113	EW-JAMh1-R (58)	Jessore	Abhaynagar	23.07222	89.33556	51.26	0	0.0057	195.0	2	7.09	-95	27.1	109.9	2.32	2.04	-0.28	
114	EW-JANa1-R (72)	Jessore	Abhaynagar	23.03111	89.36917	37.43	0.2	0.11	85.9	0.5	7.07	-60	26.8	145.1	3.45	2.98	-0.49	
115	EW-JAR1-R (85)	Jessore	Abhaynagar	22.99833	89.38722	47.91	0	0.0011	179.4	0	6.88	63	26.1	268.6	3.18	2.62	-0.56	
116	EW-JAPr1-R (92)	Jessore	Abhaynagar	22.96806	89.38917	42.53	0	<0.0005	390.0	0.8	6.72	30	27.1	234.9	2.01	1.48	-0.53	
117	EW-JASh1-R (37)	Jessore	Abhaynagar	23.00222	89.50361	47.40	0	0.0008	158.8	0.2	7.09	54	29.6	257.1	2.81	1.96	-0.85	
118	EW-JASd1-R (42)	Jessore	Abhaynagar	22.97167	89.50389	43.85	0	0.0061	182.5	5	6.88	-57	29.6	148.1	3.19	2.25	-0.94	
119	EW-HJN1-R (136)	Jhenaidah	Jhenaidah Sadar	23.46306	89.16389	46.55	0	0.0011	68.0	2	7.07	287	26.9	492.0	2.50	6.09	3.59	
120	EW-HJN1-R (147)	Jhenaidah	Jhenaidah Sadar	23.46500	89.21398	41.33	0	0.0008	57.0	0	7.02	240	27.0	444.9	3.07	5.77	2.70	
121	EW-HJSr1-R (133)	Jhenaidah	Jhenaidah Sadar	23.50259	89.16361	39.06	0.01	0.0025	71.0	1	7.00	103	26.8	308.1	4.15	5.65	1.50	
122	EW-HJH1-R (42)	Jhenaidah	Jhenaidah Sadar	23.56028	89.08306	44.80	0.07	0.046	58.2	2	6.88	-128	26.6	77.2	4.67	8.82	4.15	
123	EW-HJGn1-R (55)	Jhenaidah	Jhenaidah Sadar	23.49806	89.07222	40.40	0	0.0006	50.0	0	7.01	98	27.2	302.8	5.36	8.79	3.43	
124	EW-HJGn1-R (86)	Jhenaidah	Jhenaidah Sadar	23.48352	89.07565	47.00	0.1	0.47	87.3	5	6.91	-119	29.4	84.2	5.06	8.93	3.87	
125	EW-HJHr1-R (231)	Jhenaidah	Jhenaidah Sadar	23.56046	89.26046	37.92	0.03	0.017	73.3	0.5	7.11	-10	29.0	193.5	4.25	7.65	3.40	
126	EW-HJHr1-R (240)	Jhenaidah	Jhenaidah Sadar	23.55972	89.30259	46.01	0.04	0.03	91.7	5	7.07	-104	30.0	98.8	5.09	7.18	2.09	
127	EW-HJGr1-R (200)	Jhenaidah	Jhenaidah Sadar	23.47556	89.24639	41.44	0	0.0006	66.7	0	7.10	168	26.3	373.4	5.31	5.54	0.23	
128	EW-HJFr1-R (261)	Jhenaidah	Jhenaidah Sadar	23.47704	89.28444	35.45	0.02	0.016	49.3	1	7.30	-103	26.5	102.3	3.71	4.65	0.94	
129	EW-HJMd1-R (19)	Jhenaidah	Jhenaidah Sadar	23.52778	89.01972	38.22	0.04	0.047	63.1	10	6.87	-129	26.4	76.4	3.09	10.12	7.03	
130	EW-HJMd1-R (26)	Jhenaidah	Jhenaidah Sadar	23.53417	89.02250	39.70	0.08	0.054	73.8	2	6.94	-107	26.4	98.4	3.25	9.62	6.37	
131	EW-HJN1-R (122)	Jhenaidah	Jhenaidah Sadar	23.56333	89.18639	41.90	0	0.004	65.7	0.2	7.07	6	26.5	211.3	6.49	8.59	2.10	
132	EW-HJN1-R (125)	Jhenaidah	Jhenaidah Sadar	23.54944	89.16750	19.83	0.01	0.0068	82.5	1	6.98	-53	27.1	151.9	6.39	8.74	2.35	
133	EW-HJK1-R (176)	Jhenaidah	Jhenaidah Sadar	23.50898	89.20500	37.90	0	<0.0005	71.5	0	7.12	180	26.2	385.5	4.40	6.06	1.68	
134	EW-HJSg1-R (34)	Jhenaidah	Jhenaidah Sadar	23.55028	89.04778	39.90	0.05	0.034	49.6	0.5	7.09	-85	26.8	120.1	4.10	7.18	3.08	
135	EW-HJPd1-R (225)	Jhenaidah	Jhenaidah Sadar	23.54630	89.28556	35.18	0	<0.0005	53.0	0	7.17	187	29.0	390.5	4.55	7.48	2.93	
136	EW-HJPg1-R (114)	Jhenaidah	Jhenaidah Sadar	23.53278	89.14528	48.80	0.03	0.016	51.9	1	6.96	-71	26.4	134.4	5.57	6.99	1.42	
137	EW-HJSd1-R (3)	Jhenaidah	Jhenaidah Sadar	23.52917	88.97417	41.59	0.5	0.28	69.8	5	6.95	-125	26.4	80.4	4.09	10.10	6.01	
138	EW-HJMh1-R (88)	Jhenaidah	Jhenaidah Sadar	23.46065	89.10296	41.01	0.02	0.03	72.9	5	6.96	-113	26.2	92.5	5.52	8.60	3.08	
139	EW-HJMh1-R (98)	Jhenaidah	Jhenaidah Sadar	23.50037	89.12139	46.60	0.1	0.11	68.3	2	6.89	-128	26.1	77.6	4.93	8.65	3.72	
140	EW-HJPr1-R (190)	Jhenaidah	Jhenaidah Sadar	23.55787	89.22111	35.80	0	<0.0005	47.5	0	7.08	131	26.2	336.5	5.07	8.63	3.56	
141	EW-HJPr1-R (251)	Jhenaidah	Jhenaidah Sadar	23.54028	89.25333	42.35	0.03	0.023	75.3	1	6.92	-96	26.3	109.4	4.34	6.11	1.77	
142	EW-HJKm1-R (62)	Jhenaidah	Jhenaidah Sadar	23.54750	89.11222	39.80	0.09	0.041	58.4	2	6.97	-117	26.6	88.2	5.26	8.96	3.70	
143	EW-HJDg1-R (196)	Jhenaidah	Jhenaidah Sadar	23.49074	89.24167	39.00	0.06	0.062	78.6	5	7.08	-106	26.7	99.1	3.72	5.47	1.75	
144	EW-HKRg1-R (74)	Jhenaidah	Kaliganj	23.36981	89.13826	45.35	0.01	0.023	71.8	5	7.05	34	27.1	238.9	3.63	6.64	3.01	
145	EW-HKRk1-R (135)	Jhenaidah	Kaliganj	23.34694	89.10611	38.75	0	0.0031	63.0	2	7.08	-96	26.6	109.2	4.65	8.16	3.51	
146	EW-HKJm1-R (89)	Jhenaidah	Kaliganj	23.42222	89.18028	46.71	0	0.0018	77.0	0	7.14	68	27.3	272.7	4.16	7.71	3.55	
147	EW-HKJm1-R (101)	Jhenaidah	Kaliganj	23.41713	89.24046	55.60	0.3	0.17	82.2	5	6.99	-122	26.5	83.3	3.79	4.57	0.78	
148	EW-HKK1-R (115)	Jhenaidah	Kaliganj	23.40806	89.21426	40.85	0.01	0.017	77.5	2	7.05	-60	27.1	144.9	4.58	6.25	1.67	
149	EW-HKK1-R (173)	Jhenaidah	Kaliganj	23.37676	89.23611	28.50	0	<0.0005	82.5	0	7.02	254	26.7	459.1	5.03	5.82	0.79	
150	EW-HKTh1-R (45)	Jhenaidah	Kaliganj	23.39778	89.06881	46.30	0.03	0.027	53.4	1	7.06	-117	26.6	88.2	5.50	8.02	2.52	

Table 1.1.1

Results of 300 Existing Wells Survey in Rainy Season [June to July 2000] (4/6)

No.	Well No.	District	Thana	Lat (deg-N)	Long. (deg-E)	Well depth (m)	As by FK (mg/l)	As by AAS (mg/l)	EC (mS/m)	Fe ²⁺ (mg/l)	pH (SU)	ORP (mV)	W-Temp (deg-C)	Eh (mV)	DTW (GL-m)	GL (masl)	GWL (masl)
151	EW-HKK1-R (28)	Jhenaidah	Kaliganj	23.40889	89.13583	41.45	0	0.0011	72.3	0	7.07	36	26.8	241.1	5.30	8.12	2.82
152	EW-HKKs1-R (152)	Jhenaidah	Kaliganj	23.31343	89.11333	45.80	0	<0.0005	76.0	0	7.18	-15	27.0	189.9	5.54	8.18	2.64
153	EW-HKSr1-R (40)	Jhenaidah	Kaliganj	23.38167	89.10194	44.40	0.01	0.018	67.2	2	6.99	-110	26.3	95.4	4.73	7.49	2.76
154	EW-HKM1-R (180)	Jhenaidah	Kaliganj	23.34509	89.21491	44.67	0.04	0.03	50.2	5	7.05	-110	26.7	95.1	5.89	4.92	-0.97
155	EW-HKSd1-R (9)	Jhenaidah	Kaliganj	23.43389	89.13694	44.80	0	<0.0005	74.4	0	7.00	38	26.8	243.1	3.89	7.65	3.76
156	EW-HKBr1-R (164)	Jhenaidah	Kaliganj	23.32574	89.14741	47.00	0.02	0.014	85.0	5	7.04	-94	26.6	111.2	4.46	7.32	2.88
157	EW-HKBr1-R (195)	Jhenaidah	Kaliganj	23.29463	89.18250	35.30	0.09	0.075	74.5	5	7.07	-127	26.6	78.2	5.96	7.35	1.39
158	EW-HKNm1-R (32)	Jhenaidah	Kaliganj	23.40074	89.16352	45.42	0	<0.0005	68.0	0	7.08	144	27.5	348.6	5.02	7.25	2.23
159	EW-HKNm1-R (123)	Jhenaidah	Kaliganj	23.36899	89.18537	44.31	0.02	0.0099	68.5	5	6.96	-92	28.0	112.2	5.89	5.04	-0.85
160	EW-HTE1-R (75)	Jhenaidah	Kotchandpur	23.43528	89.04917	40.10	0.03	0.017	118.8	10	6.98	8	26.9	213.0	2.98	7.66	4.68
161	EW-HTKs1-R (32)	Jhenaidah	Kotchandpur	23.43833	88.99028	41.15	0.03	0.032	64.6	2	7.22	-20	27.0	184.9	4.43	9.29	4.86
162	EW-HTK1-R (50)	Jhenaidah	Kotchandpur	23.46500	89.01111	50.65	0	<0.0005	74.7	0	7.22	282	26.3	487.4	3.88	8.53	4.85
163	EW-HTK1-R (48)	Jhenaidah	Kotchandpur	23.41222	89.00917	30.20	0	<0.0005	67.5	1	7.16	220	27.0	424.9	4.50	9.08	4.58
164	EW-HTDr1-R (13)	Jhenaidah	Kotchandpur	23.48806	88.98167	43.85	1	0.24	78.6	5	7.16	-129	26.3	76.4	3.62	8.47	4.85
165	EW-HTDr1-R (18)	Jhenaidah	Kotchandpur	23.47722	88.95000	21.40	0.06	0.061	62.9	5	7.07	-139	26.7	66.1	3.92	10.58	6.66
166	EW-HTSb1-R (24)	Jhenaidah	Kotchandpur	23.45407	88.95315	25.80	0.06	0.051	61.7	5	7.13	-128	26.7	77.1	5.35	10.65	5.30
167	EW-HLBI1-R (40)	Jhenaidah	Kotchandpur	23.42222	88.95689	47.25	0.01	0.017	49.9	0.2	7.48	-113	27.0	91.9	4.82	6.90	2.08
168	EW-HMNP1-R (26)	Jhenaidah	Moheshpur	23.29324	88.76528	42.05	0.01	0.023	92.7	5	7.08	110	27.3	314.7	5.43	7.24	1.81
169	EW-HMKz1-R (13)	Jhenaidah	Moheshpur	23.27111	88.74611	48.22	0.02	0.04	73.3	5	7.15	190	27.0	394.9	5.21	8.26	3.05
170	EW-HMF1-R (104)	Jhenaidah	Moheshpur	23.40722	88.89583	25.85	0.2	0.096	95.0	2	7.09	-133	26.6	72.2	4.27	6.65	2.38
171	EW-HMMd1-R (139)	Jhenaidah	Moheshpur	23.32167	88.94417	41.70	0.05	0.051	76.4	1	7.21	-139	26.8	66.1	6.76	10.46	3.70
172	EW-HMMd1-R (159)	Jhenaidah	Moheshpur	23.28306	88.95278	42.54	0.2	0.16	51.3	2	7.12	-141	26.2	64.5	4.83	7.87	3.04
173	EW-HMSK1-R (29)	Jhenaidah	Moheshpur	23.33806	88.76944	41.37	0.02	0.042	74.0	2	7.16	70	27.3	274.7	4.53	8.35	3.82
174	EW-HMBb1-R (48)	Jhenaidah	Moheshpur	23.28528	88.81639	51.75	0.01	0.057	68.0	1	7.13	187	26.9	392.0	3.84	7.58	3.74
175	EW-HMMh1-R (109)	Jhenaidah	Moheshpur	23.35472	88.91056	45.75	0.1	0.083	68.0	5	7.13	13	27.1	217.9	6.56	9.41	2.85
176	EW-HMP1-R (74)	Jhenaidah	Moheshpur	23.36213	88.85657	40.55	0.2	0.092	77.0	5	7.09	30	26.5	235.3	3.33	6.92	3.59
177	EW-HMAz1-R (152)	Jhenaidah	Moheshpur	23.35861	88.98222	40.70	0.07	0.085	74.3	2	7.14	-139	26.1	66.6	5.32	8.09	2.77
178	EW-HMSd1-R (147)	Jhenaidah	Moheshpur	23.37556	88.94444	39.95	0.01	0.014	49.7	0.5	7.32	-118	26.7	87.1	3.82	8.51	4.68
179	EW-HMSw1-R (34)	Jhenaidah	Moheshpur	23.37315	88.80528	45.10	0.01	0.019	108.8	2	7.11	192	26.5	397.3	4.60	6.95	2.35
180	EW-HMN1-R (95)	Jhenaidah	Moheshpur	23.32333	88.88528	42.30	0.2	0.13	79.3	5	7.07	-125	26.9	80.0	4.11	7.68	3.57
181	EW-HMJd1-R (56)	Jhenaidah	Moheshpur	23.27833	88.85222	39.35	0.01	0.026	46.7	1	7.26	-122	26.4	83.4	3.15	6.30	3.15
182	EW-HMJd1-R (90)	Jhenaidah	Moheshpur	23.26167	88.89250	40.45	0.01	0.021	68.9	2	7.12	-115	26.5	90.3	5.02	9.04	4.02
183	EW-HHT1-R (9)	Jhenaidah	Harinakunda	23.70111	89.04611	41.28	0.04	0.03	67.6	1	7.10	-94	26.3	111.4	4.59	10.60	6.01
184	EW-HHRg1-R (48)	Jhenaidah	Harinakunda	23.64880	89.10287	41.21	0	0.0015	43.8	0.5	7.34	136	25.7	341.9	4.90	8.86	3.96
185	EW-HHR1-R (26)	Jhenaidah	Harinakunda	23.66194	89.05528	37.45	0.09	0.11	81.4	2	7.15	96	27.1	300.9	3.62	9.26	5.64
186	EW-HHBy1-R (4)	Jhenaidah	Harinakunda	23.72778	89.11454	38.20	0.05	0.055	79.0	5	7.10	-127	26.4	78.4	4.77	11.12	6.35
187	EW-HHJ1-R (8)	Jhenaidah	Harinakunda	23.71889	89.07370	38.25	0.04	0.046	75.2	2	7.09	-112	26.3	93.4	4.53	10.28	5.75
188	EW-HHCd1-R (72)	Jhenaidah	Harinakunda	23.60611	89.13111	48.30	0	0.016	46.4	0	7.33	117	26.0	322.6	5.32	7.97	2.65
189	EW-HHD1-R (33)	Jhenaidah	Harinakunda	23.64435	89.03417	38.28	0	<0.0005	61.4	0	7.22	320	26.5	525.3	3.45	9.26	5.81
190	EW-HHKp1-R (56)	Jhenaidah	Harinakunda	23.58806	89.07676	39.81	0.05	0.0325	59.4	2	7.15	92	27.4	296.6	5.29	9.65	4.36
191	EW-HSSr1-R (54)	Jhenaidah	Sailkupa	23.72917	89.24528	46.70	0	0.0018	79.5	0	7.06	326	26.7	531.1	5.22	9.90	4.68
192	EW-HSFz1-R (69)	Jhenaidah	Sailkupa	23.68944	89.25833	40.35	0.9	0.17	94.8	2	6.88	59	26.4	264.4	5.30	8.07	2.77
193	EW-HSD1-R (96)	Jhenaidah	Sailkupa	23.66222	89.33867	40.78	0	0.0005	119.2	0	7.13	304	26.4	509.4	4.85	9.26	4.41
194	EW-HSDg1-R (40)	Jhenaidah	Sailkupa	23.69926	89.19593	35.10	0	0.0006	65.3	0	7.28	33	26.2	238.5	4.92	9.26	4.34
195	EW-HSUM1-R (122)	Jhenaidah	Sailkupa	23.64139	89.25056	34.80	0	<0.0005	84.7	0	7.19	187	26.1	392.6	5.25	8.04	2.79
196	EW-HSF1-R (133)	Jhenaidah	Sailkupa	23.63528	89.18611	40.55	0	0.0005	65.6	0	7.12	210	26.0	415.6	5.57	8.93	3.76
197	EW-HSN1-R (155)	Jhenaidah	Sailkupa	23.59250	89.25833	41.37	0	<0.0005	52.8	0	7.04	322	26.1	527.6	3.91	6.72	2.81
198	EW-HSN1-R (166)	Jhenaidah	Sailkupa	23.62861	89.27435	39.75	0	<0.0005	86.6	0	7.11	325	26.8	530.1	5.21	8.34	3.13
199	EW-HSHk1-R (88)	Jhenaidah	Sailkupa	23.69056	89.30870	42.34	0.03	0.045	96.4	5	6.90	58	26.3	263.4	5.22	9.66	4.44
200	EW-HSSH1-R (51)	Jhenaidah	Sailkupa	23.68444	89.24556	40.85	0	0.009	87.3	0	7.02	283	26.3	488.4	5.14	9.23	4.09

Table 1.1.1

Results of 300 Existing Wells Survey in Rainy Season [June to July 2000] (5/6)

No.	Well No.	District	Thana	Lat. (deg-N)	Long. (deg-E)	Well depth (m)	As by FK (mg/l)	As by AAS (mg/l)	EC (mS/m)	Fe ²⁺ (mg/l)	pH (SU)	ORP (mV)	W-Temp (deg-C)	Eh (mV)	DTW (GL- m)	GL (masl)	GWL (masl)
201	EW-HSAb1-R (177)	Jhenaidah	Sailkupa	23.80917	89.31389	43.64	0	<0.0005	90.0	0	7.07	320	27.1	524.9	5.05	8.08	3.03
202	EW-HSBg1-R (101)	Jhenaidah	Sailkupa	23.82083	89.34806	40.82	0	0.0008	93.8	0	7.01	354	26.8	559.1	4.07	8.17	4.10
203	EW-HSBg1-R (115)	Jhenaidah	Sailkupa	23.64500	89.30250	39.40	0	<0.0005	92.1	0	7.03	356	25.9	561.7	4.77	8.65	3.88
204	EW-HSKc1-R (27)	Jhenaidah	Sailkupa	23.74000	89.20500	38.30	0.02	0.021	77.3	2	7.02	-95	26.0	110.6	4.97	10.07	5.10
205	EW-HSTb1-R (16)	Jhenaidah	Sailkupa	23.70611	89.15000	45.35	0.02	0.028	52.0	2	7.21	-135	26.8	70.1	5.68	9.22	3.54
206	EW-HSMr1-R (9)	Jhenaidah	Sailkupa	23.66500	89.16167	41.70	0	0.029	54.2	0	7.15	131	26.6	336.2	5.55	10.25	4.70
207	EW-HSDd1-R (145)	Jhenaidah	Sailkupa	23.61083	89.20778	44.54	0.02	0.019	61.5	2	7.20	-120	26.2	85.5	3.10	6.79	3.69
208	EW-CAAI 1-R (79)	Chuadanga	Alamdanga	23.76083	88.94361	35.20	0.03	0.046	85.6	10	7.08	-120	26.4	85.4	2.68	12.22	9.54
209	EW-CAAI 1-R (72)	Chuadanga	Alamdanga	23.75042	88.93722	32.49	0.02	0.021	94.9	5	7.15	-71	27.0	133.9	2.78	11.01	8.23
210	EW-CABr 1-R (56)	Chuadanga	Alamdanga	23.75083	88.88428	39.21	0.01	0.03	60.0	2	7.14	-88	26.7	117.1	6.08	12.75	6.67
211	EW-CABg 1-R (6)	Chuadanga	Alamdanga	23.78958	88.83792	29.72	0.06	0.04	93.6	10	7.09	-120	27.4	84.6	3.90	12.32	8.42
212	EW-CADu 1-R (78)	Chuadanga	Alamdanga	23.72843	88.96694	37.57	0.02	0.018	60.1	0.5	7.15	-45	26.7	160.1	1.99	10.68	8.69
213	EW-CAGg 1-R (09)	Chuadanga	Alamdanga	23.76259	88.83454	36.16	0.04	0.037	75.0	5	7.20	-90	27.5	114.6	4.33	12.91	8.58
214	EW-CAGm 1-R (18)	Chuadanga	Alamdanga	23.74306	88.82306	39.26	0.01	0.014	42.0	0.5	7.43	-90	27.3	114.7	5.12	12.20	7.08
215	EW-CAHr 1-R (68)	Chuadanga	Alamdanga	23.79083	88.89676	39.81	0	0.0006	63.4	0	7.19	180	26.3	385.4	4.44	12.41	7.97
216	EW-CAK1 1-R (95)	Chuadanga	Alamdanga	23.79472	88.94597	26.68	0.1	0.063	130.0	10	7.08	-103	26.3	102.4	3.94	13.33	9.39
217	EW-CAJm 1-R (103)	Chuadanga	Alamdanga	23.72000	89.00481	36.58	0	<0.0005	52.2	0	7.20	300	26.7	505.1	3.24	11.26	8.02
218	EW-CAJh 1-R (30)	Chuadanga	Alamdanga	23.68847	88.87250	36.64	0.01	0.036	67.5	2	7.24	-45	26.4	160.4	6.09	11.35	5.28
219	EW-CAJh 1-R (81)	Chuadanga	Alamdanga	23.73000	88.90667	36.76	0	<0.0005	48.0	0	7.30	330	27.5	534.6	3.93	11.96	8.03
220	EW-CAKd 1-R (22)	Chuadanga	Alamdanga	23.72083	88.81056	36.10	0.01	0.0076	106.5	5	7.20	-105	26.5	100.3	3.28	11.72	8.44
221	EW-CAKd 1-R (35)	Chuadanga	Alamdanga	23.71778	88.85583	31.00	0.01	0.051	79.9	5	7.17	-115	26.7	90.1	5.18	12.04	6.86
222	EW-CAKs 1-R (116)	Chuadanga	Alamdanga	23.66111	88.97472	36.72	0.02	0.032	70.0	10	7.20	-95	26.3	110.4	2.59	9.45	6.86
223	EW-CAKs 1-R (120)	Chuadanga	Alamdanga	23.63222	88.95684	35.32	0.2	0.1	82.0	10	7.12	-111	26.2	94.5	3.30	10.10	6.80
224	EW-CAKm 1-R (48)	Chuadanga	Alamdanga	23.76847	88.91208	35.30	0	0.016	53.0	2	7.31	-90	26.0	115.6	3.80	12.23	8.43
225	EW-CANg 1-R (90)	Chuadanga	Alamdanga	23.66389	88.93528	41.58	0.7	0.23	76.5	10	7.09	-121	26.2	84.5	3.32	10.87	7.35
226	EW-CANg 1-R (119)	Chuadanga	Alamdanga	23.63694	88.95722	63.71	0	0.0007	63.0	0	7.18	305	25.8	510.8	3.29	9.85	6.56
227	EW-CDDm 1-R (34)	Chuadanga	Damurhuda	23.59935	88.70861	37.28	0.01	0.0258	85.7	2	7.32	-90	27.8	114.4	5.37	10.41	5.04
228	EW-CDDm 1-R (59)	Chuadanga	Damurhuda	23.60472	88.76542	35.35	0.02	0.033	55.0	1	7.40	-90	27.1	114.9	5.49	11.30	5.81
229	EW-CDDr 1-R (20)	Chuadanga	Damurhuda	23.49250	88.76287	31.58	0.02	0.051	45.7	2	7.30	-50	28.0	154.2	6.39	9.14	2.75
230	EW-CDDr 1-R (75)	Chuadanga	Damurhuda	23.52167	88.79039	30.31	0.3	0.11	59.9	5	7.35	-118	27.3	86.7	5.67	8.98	3.29
231	EW-CDHw 1-R (73)	Chuadanga	Damurhuda	23.54972	88.81014	33.43	0.3	0.23	75.7	5	7.37	-135	26.6	70.2	4.64	10.93	6.29
232	EW-CDHw 1-R (68)	Chuadanga	Damurhuda	23.57694	88.79472	37.92	0.3	0.12	90.8	2	7.22	-98	27.0	106.9	6.29	11.73	5.44
233	EW-CDJr 1-R (51)	Chuadanga	Damurhuda	23.68194	88.78894	36.50	0	<0.0005	112.6	0.2	7.09	224	27.0	428.9	5.14	11.70	6.56
234	EW-CDKp 1-R (7)	Chuadanga	Damurhuda	23.57139	88.67431	34.86	0.01	0.014	74.6	2	7.36	-92	27.5	112.6	4.60	10.90	6.30
235	EW-CDKr 1-R (26)	Chuadanga	Damurhuda	23.51972	88.72222	31.65	0	0.0092	120.0	2	7.20	-80	28.0	124.2	7.20	9.41	2.21
236	EW-CDKr 1-R (29)	Chuadanga	Damurhuda	23.55167	88.73111	34.00	0	0.02	75.0	2	7.19	-65	27.5	139.6	7.11	11.42	4.31
237	EW-CDNI 1-R (41)	Chuadanga	Damurhuda	23.65306	88.71083	32.81	0.01	0.01	81.1	2	7.25	-90	26.8	115.1	5.29	10.76	5.47
238	EW-CDNI 1-R (43)	Chuadanga	Damurhuda	23.63472	88.70361	40.73	0.03	0.072	101.6	5	7.30	-102	27.5	102.6	5.63	9.60	3.97
239	EW-CCAI 1-R (1)	Chuadanga	Chuadanga Sadar	23.66963	88.81944	32.31	0.03	0.028	21.0	0.5	7.40	21	27.0	225.9	6.10	12.05	5.95
240	EW-CCBg 1-R (18)	Chuadanga	Chuadanga Sadar	23.55389	88.86306	37.22	0.03	0.024	62.5	2	7.27	-105	26.7	100.1	3.73	11.42	7.69
241	EW-CCBg 1-R (66)	Chuadanga	Chuadanga Sadar	23.51306	88.88528	35.67	0.04	0.046	72.0	5	7.28	-105	27.5	99.6	3.67	10.20	6.53
242	EW-CCCK 1-R (78)	Chuadanga	Chuadanga Sadar	23.59213	88.93806	25.48	0.3	0.16	64.3	10	7.11	-113	26.6	92.2	4.53	10.72	6.19
243	EW-CCkt 1-R (91)	Chuadanga	Chuadanga Sadar	23.56819	88.97653	44.22	0	<0.0005	68.9	0	7.18	-150	26.9	355.0	4.63	10.35	5.72
244	EW-CCMm 1-R (47)	Chuadanga	Chuadanga Sadar	23.65139	88.89556	46.55	0.01	0.049	55.7	2	7.25	-32	26.3	173.4	3.56	10.83	7.27
245	EW-CCPd 1-R (53)	Chuadanga	Chuadanga Sadar	23.61583	88.88347	31.72	0.03	0.023	106.9	5	7.20	-104	26.6	101.2	4.82	10.74	5.92
246	EW-CCPd 1-R (81)	Chuadanga	Chuadanga Sadar	23.60519	88.93111	31.23	0.3	0.098	84.3	5	7.17	-113	28.1	91.1	4.23	11.40	7.17
247	EW-CCCd 1-R (5)	Chuadanga	Chuadanga Sadar	23.63056	88.81157	35.47	0.05	0.072	73.1	5	7.09	-57	27.5	147.2	7.09	11.52	4.43
248	EW-CCcd 1-R (41)	Chuadanga	Chuadanga Sadar	23.63111	88.85917	34.85	0.01	0.025	68.0	2	7.08	-32	27.1	172.9	5.48	11.64	6.16
249	EW-CCSK 1-R (33)	Chuadanga	Chuadanga Sadar	23.58306	88.85833	42.43	0	<0.0005	63.4	0	7.28	125	27.1	329.9	4.57	10.59	6.02
250	EW-CCSK 1-R (35)	Chuadanga	Chuadanga Sadar	23.58917	88.86556	30.95	0.03	0.079	61.9	2	7.20	-100	26.6	105.2	3.02	9.63	6.61

Table 1.1.2

Results of 300 Existing Wells Survey in Dry Season [December 2000 to January 2001] (1/7)

No.	Well No.	District	Thana	Lat. (deg-N)	Long. (deg-E)	Well depth (m)	As by FK (mg/l)	As by AAS (mg/l)	EC (mS/m)	Fe ²⁺ (mg/l)	pH (SU)	ORP (mV)	W-Temp (deg-C)	Eh (mV)	DTW (GL- m)	GL (masl)	GWL (masl)
1	EW-JHMg1-D (48)	Jessore	Jhikargachha	23.16722	89.07833	41.43	0.3	0.17	91.8	5	6.93	13	25.0	219.4	4.66	7.20	2.54
2	EW-JHHz1-D (138)	Jessore	Jhikargachha	22.99011	89.02194	36.79	0.05	0.050	45.9	5	7.12	11	25.7	216.9	3.62	5.71	2.09
3	EW-JHSh1-D (146)	Jessore	Jhikargachha	22.96583	89.01194	41.42	0	0.014	72.2	2	7.01	24	26.1	229.6	2.34	5.46	3.12
4	EW-JHBk1-D (156)	Jessore	Jhikargachha	22.96889	89.07056	47.32	0.1	0.22	54.2	5	7.17	35	24.5	241.7	4.61	5.86	1.26
5	EW-JHPn1-D (93)	Jessore	Jhikargachha	23.06083	89.08667	41.65	0.07	0.17	46.1	2	7.20	35	23.3	242.6	4.14	6.85	2.71
6	EW-JHNh1-D (105)	Jessore	Jhikargachha	23.04833	89.04194	50.39	0.3	0.20	46.2	5	6.99	17	26.1	222.6	4.16	7.10	2.94
7	EW-JHNh1-D (108)	Jessore	Jhikargachha	23.05333	89.02417	38.10	0.01	0.028	97.1	5	7.00	17	26.0	222.6	3.77	5.92	2.15
8	EW-JHGg1-D (08)	Jessore	Jhikargachha	23.16806	89.03417	47.02	0.09	0.11	45.5	5	7.08	17	24.8	223.5	5.61	6.23	0.62
9	EW-JHSm 1-D (28)	Jessore	Jhikargachha	23.10139	89.03583	37.33	0.03	0.14	46.6	5	6.95	22	25.3	228.2	3.89	5.88	1.99
10	EW-JHGd1-D (30)	Jessore	Jhikargachha	23.09667	89.05944	36.05	0.01	0.010	40.6	2	7.10	17	25.9	222.7	3.31	7.24	3.93
11	EW-JHNs 1-D (124)	Jessore	Jhikargachha	23.03308	89.04972	44.34	0.03	0.026	46.5	2	7.05	23	25.8	228.8	3.53	7.17	3.64
12	EW-JHJk1-D (35)	Jessore	Jhikargachha	23.12472	89.09417	31.56	0.2	0.15	53.0	10	6.92	44	24.7	250.6	4.00	7.28	3.28
13	EW-JHJk1-D (62)	Jessore	Jhikargachha	23.10417	89.12778	26.28	0.02	0.020	45.2	5	7.06	105	24.5	311.7	4.17	6.22	2.05
14	EW-JSNz1-D (62)	Jessore	Sharsha	23.11056	88.97611	37.41	0.05	0.070	40.2	5	7.05	55	25.2	261.2	3.26	5.51	2.25
15	EW-JSLk1-D (33)	Jessore	Sharsha	23.10889	88.95500	40.09	0.05	0.043	40.6	5	6.92	-55	25.1	151.3	2.35	4.72	2.37
16	EW-JSP11-D (92)	Jessore	Sharsha	22.99472	88.89611	40.67	0.06	0.21	52.2	5	6.93	-17	26.1	188.6	2.07	3.77	1.70
17	EW-JSBn1-D (37)	Jessore	Sharsha	23.09694	88.91250	30.25	0	0.0012	48.0	0.5	7.13	-5	24.1	202.0	3.21	4.39	1.19
18	EW-JSBg1-D (128)	Jessore	Sharsha	22.99306	88.98111	37.99	0.1	0.12	40.9	5	6.80	-31	26.0	174.6	4.56	5.34	0.78
19	EW-JSBn1-D (88)	Jessore	Sharsha	23.04472	88.91056	39.84	0.05	0.024	40.9	5	6.99	-51	25.7	154.9	4.77	4.47	-0.30
20	EW-JSKb1-D (132)	Jessore	Sharsha	22.93889	88.94917	27.46	0.2	0.13	55.5	5	6.86	-55	25.8	150.8	5.22	4.89	-0.33
21	EW-JSGg1-D (114)	Jessore	Sharsha	22.95991	88.89694	41.87	0.8	0.22	49.1	5	6.93	-39	26.0	166.6	7.13	5.79	-1.34
22	EW-JSSs1-D (75)	Jessore	Sharsha	23.07389	88.97778	33.95	0	0.026	88.2	5	6.96	-18	25.6	187.9	2.60	5.34	2.74
23	EW-JSUI 1-D (99)	Jessore	Sharsha	23.03361	88.96667	32.18	0.02	0.043	36.9	2	7.07	-44	24.0	163.1	3.05	6.47	3.42
24	EW-JSDh1-D (01)	Jessore	Sharsha	23.17222	88.95444	37.00	0	0.0040	70.0	5	7.00	-50	24.2	156.8	3.74	5.22	1.49
25	EW-JSDh1-D (8)	Jessore	Sharsha	23.16472	88.98369	37.01	0.05	0.057	65.7	2	6.70	-5	23.4	202.5	3.20	4.09	0.89
26	EW-JKk1-D (26)	Jessore	Keshabpur	22.92189	89.19978	42.31	0.03	0.10	72.2	5	7.10	35	25.2	241.2	0.85	4.10	3.25
27	EW-JKk1-D (72)	Jessore	Keshabpur	22.90472	89.22278	43.76	1	0.32	110.7	5	7.10	135	23.8	342.2	1.70	2.96	1.26
28	EW-JKSf1-D (121)	Jessore	Keshabpur	22.89963	89.31333	42.82	0	0.044	74.0	1	7.36	93	24.9	299.4	2.51	2.28	-0.23
29	EW-JKSf1-D (128)	Jessore	Keshabpur	22.89519	89.33139	45.70	0	0.0011	77.4	0	7.33	168	24.8	374.5	1.55	1.49	-0.06
30	EW-JKPj1-D (102)	Jessore	Keshabpur	22.91472	89.25111	46.52	1	0.43	272.0	5	7.13	-117	24.5	89.7	5.35	1.94	-3.41
31	EW-JKMj1-D (97)	Jessore	Keshabpur	22.86759	89.27389	36.12	1	0.29	89.5	5	6.97	-62	24.2	144.9	1.60	1.88	0.28
32	EW-JKGr1-D (135)	Jessore	Keshabpur	22.87241	89.31639	45.01	0	0.006	107.2	0	7.40	113	24.3	319.9	1.55	1.39	-0.16
33	EW-JKTm1-D (11)	Jessore	Keshabpur	22.89833	89.15861	40.98	0.01	0.044	67.8	5	7.16	-57	25.2	149.2	0.97	3.87	2.90
34	EW-JKSg1-D (17)	Jessore	Keshabpur	22.86472	89.14306	40.62	0.4	0.19	83.4	10	7.01	-70	24.5	136.7	3.11	3.26	0.15
35	EW-JKSg1-D (41)	Jessore	Keshabpur	22.84056	89.15000	35.28	0.1	0.077	108.7	10	6.98	-62	24.8	144.5	0.80	3.40	2.60
36	EW-JKMj1-D (65)	Jessore	Keshabpur	22.88028	89.20694	46.36	0	0.055	86.3	5	6.93	24	24.2	230.9	2.58	2.93	0.35
37	EW-JKBn1-D (51)	Jessore	Keshabpur	22.84333	89.18139	21.33	0.03	0.064	121.8	10	6.83	-36	24.1	171.0	1.94	3.52	1.58
38	EW-JKBn1-D (88)	Jessore	Keshabpur	22.84611	89.22056	43.31	0.08	0.072	71.7	5	7.12	-47	25.0	159.4	0.99	1.45	0.46
39	EW-JJCr1-D (13)	Jessore	Jessore Sadar	23.22954	89.13917	46.57	0.1	0.080	30.5	2	7.35	-18	24.1	189.0	3.87	7.61	3.74
40	EW-JJJs1-D (78)	Jessore	Jessore Sadar	23.15861	89.18944	48.40	1	0.27	44.9	5	7.02	8	23.3	215.6	4.57	4.62	0.06
41	EW-JJKc1-D (223)	Jessore	Jessore Sadar	23.13583	89.30222	46.80	0	0.0006	84.6	0	7.33	175	24.0	382.1	4.07	5.90	1.83
42	EW-JJLb1-D (156)	Jessore	Jessore Sadar	23.29833	89.24500	48.50	0.01	0.014	81.6	2	7.10	122	24.2	328.9	3.86	4.61	0.75
43	EW-JJLb1-D (162)	Jessore	Jessore Sadar	23.27139	89.24333	49.00	0	0.0091	81.0	2	7.18	118	26.1	323.6	3.95	6.10	2.15
44	EW-JJCc1-D (59)	Jessore	Jessore Sadar	23.12250	89.17778	42.20	0.01	0.22	93.7	5	7.11	145	24.2	351.9	2.75	4.36	1.61
45	EW-JJKs1-D (113)	Jessore	Jessore Sadar	23.21722	89.18500	45.07	0	0.00077	50.1	0.2	7.21	17	24.1	224.0	4.00	7.28	3.28
46	EW-JJKs1-D (136)	Jessore	Jessore Sadar	23.26639	89.19824	46.40	0	<0.0005	44.8	0	7.20	96	24.5	302.7	3.55	6.56	3.01
47	EW-JJNp1-D (195)	Jessore	Jessore Sadar	23.19583	89.24333	47.23	0	0.00053	84.6	0.5	7.27	184	24.2	390.9	3.79	5.47	1.69
48	EW-JJA1-D (95)	Jessore	Jessore Sadar	23.17611	89.18778	40.37	0	0.0011	69.7	0.2	7.11	39	23.1	246.7	1.96	6.52	4.56
49	EW-JJRn1-D (214)	Jessore	Jessore Sadar	23.11361	89.24639	45.00	0	0.0010	101.3	0.5	7.25	209	24.8	415.5	3.57	4.55	0.98
50	EW-JJDa1-D (22)	Jessore	Jessore Sadar	23.18750	89.12528	44.28	0	0.00089	113.2	0	7.12	25	25.8	230.8	4.08	5.77	1.69

Table 1.1.2

Results of 300 Existing Wells Survey in Dry Season [December 2000 to January 2001] (2/7)

No.	Well No.	District	Thana	Lat (deg-N)	Long. (deg-E)	Well depth (m)	As by FK (mg/l)	As by AAS (mg/l)	EC (mS/m)	Fe ²⁺ (mg/l)	pH (SU)	ORP (mV)	W-Temp (deg-C)	Eh (mV)	DTW (GL- m)	GL (mas)	GWL (mas)
51	EW-JJdA1-D (38)	Jessore	Jessore Sadar	23.14889	89.13806	47.04	0	0.0013	53.4	0	7.22	34	25.7	239.9	3.71	7.06	3.35
52	EW-JJBs1-D (247)	Jessore	Jessore Sadar	23.12333	89.34750	27.00	0.08	0.11	48.7	5	7.06	-53	25.3	153.2	3.38	4.34	0.96
53	EW-JJNp1-D (104)	Jessore	Jessore Sadar	23.19000	89.22222	46.30	0	0.0016	51.7	0	7.17	197	24.5	403.7	3.64	6.64	3.00
54	EW-JJNr1-D (240)	Jessore	Jessore Sadar	23.10583	89.31083	41.90	0	<0.0005	195.0	0	7.27	134	25.2	340.2	2.89	3.78	0.89
55	EW-JJlc1-D (170)	Jessore	Jessore Sadar	23.24111	89.23278	46.56	0	<0.0005	88.4	0	7.20	155	26.2	360.5	4.06	6.17	2.11
56	EW-JJHb1-D (186)	Jessore	Jessore Sadar	23.22222	89.25880	49.00	0	<0.0005	81.2	0	7.28	184	26.1	389.6	3.24	4.88	1.64
57	EW-JJHb1-D (122)	Jessore	Jessore Sadar	23.27463	89.14889	43.85	0	0.0024	54.0	0	7.31	178	25.0	384.4	4.09	8.27	4.16
58	EW-JJHb1-D (128)	Jessore	Jessore Sadar	23.28250	89.18528	25.37	0.06	0.10	49.6	5	7.13	169	23.8	376.2	3.58	6.22	2.64
59	EW-JJF11-D (205)	Jessore	Jessore Sadar	23.16639	89.25917	43.50	0	0.00063	110.6	0	7.30	197	25.1	403.3	3.99	5.95	1.96
60	EW-JMKp1-D (157)	Jessore	Manirampur	22.99861	89.26167	42.76	0.05	0.042	52.9	5	6.99	11	21.7	219.7	4.85	3.05	-1.80
61	EW-JMjp1-D (174)	Jessore	Manirampur	22.97556	89.15472	46.80	0.06	0.072	31.6	1	7.20	17	23.2	224.7	3.40	4.71	1.31
62	EW-JMHh1-D (25)	Jessore	Manirampur	23.01500	89.09389	40.03	0.09	0.088	36.3	5	7.03	-23	25.3	183.2	2.63	5.88	3.25
63	EW-JMHh1-D (35)	Jessore	Manirampur	23.03389	89.13472	27.85	0.05	0.38	40.0	5	7.05	-69	24.7	137.6	5.30	6.70	1.40
64	EW-JMSm1-D (160)	Jessore	Manirampur	22.98833	89.22944	46.94	0	0.047	39.1	5	7.07	-22	25.5	184.0	3.93	4.68	0.75
65	EW-JMSm1-D (210)	Jessore	Manirampur	22.96528	89.23056	48.10	0.5	0.22	56.2	10	6.98	-20	24.7	186.6	4.56	4.42	-0.14
66	EW-JMCI 1-D (198)	Jessore	Manirampur	22.98667	89.19528	40.75	0.01	0.036	54.2	5	6.96	-51	23.8	156.2	3.51	3.97	0.47
67	EW-JMCI1-D (201)	Jessore	Manirampur	22.95889	89.18111	47.42	0.06	0.073	43.0	0.5	7.32	-66	23.3	141.6	1.63	4.03	2.40
68	EW-JMKI1-D (141)	Jessore	Manirampur	22.99917	89.33917	41.60	0	0.0012	183.6	5	7.08	-47	23.4	160.5	1.92	1.04	-0.87
69	EW-JMKI1-D (148)	Jessore	Manirampur	23.00139	89.31083	50.24	0.06	0.086	279.0	10	7.04	24	22.8	232.0	2.07	1.63	-0.44
70	EW-JMDB1-D (227)	Jessore	Manirampur	22.96444	89.30333	47.74	0	0.0034	179.9	0	7.21	-69	22.3	139.3	3.60	1.73	-1.87
71	EW-JMMh1-D (239)	Jessore	Manirampur	22.93722	89.32889	56.79	0	<0.0005	148.4	0	7.34	-88	24.5	118.7	3.29	1.45	-1.84
72	EW-JMMs1-D (186)	Jessore	Manirampur	22.93611	89.14083	43.43	0	0.011	80.1	2	7.22	87	23.4	294.5	3.63	5.49	1.86
73	EW-JMHd1-D (108)	Jessore	Manirampur	23.03583	89.27750	51.65	0	0.0025	75.0	0.2	7.11	140	24.1	347.0	0.95	2.57	1.62
74	EW-JMHd1-D (138)	Jessore	Manirampur	23.04556	89.31583	51.46	0	<0.0005	139.6	0.2	7.21	89	23.5	296.4	3.95	1.90	-2.05
75	EW-JMMr1-D (91)	Jessore	Manirampur	23.03972	89.22333	31.11	0.2	0.10	40.1	5	7.08	-58	24.5	148.7	3.84	4.92	1.08
76	EW-JMMr1-D (101)	Jessore	Manirampur	23.03861	89.25361	46.92	0.08	0.055	47.6	10	6.96	-70	23.0	137.8	2.81	4.33	1.52
77	EW-JMPH1-D (13)	Jessore	Manirampur	23.06917	89.15000	42.50	0.03	0.029	44.5	5	6.94	-49	24.2	157.9	3.82	5.94	2.12
78	EW-JMNH1-D (244)	Jessore	Manirampur	22.96500	89.33833	52.63	0	<0.0005	143.3	0	7.26	-92	25.1	114.3	3.43	2.19	-1.24
79	EW-JMKd1-D (51)	Jessore	Manirampur	23.03639	89.17306	36.01	0	0.015	27.8	0.5	7.31	-98	22.4	110.2	5.18	4.66	-0.32
80	EW-JMDk1-D (124)	Jessore	Manirampur	23.06917	89.27917	36.98	0.06	0.15	99.5	2	7.33	-35	25.6	170.9	4.21	3.71	-0.50
81	EW-JMKs1-D (71)	Jessore	Manirampur	23.06306	89.19722	52.11	0.09	0.037	43.1	2	7.18	-74	24.5	132.7	4.08	5.99	1.91
82	EW-JMBj1-D (81)	Jessore	Manirampur	23.08333	89.23333	45.05	0	0.011	39.7	1	7.33	-24	24.1	183.0	3.29	4.63	1.34
83	EW-JCDI1-D (181)	Jessore	Chougachha	23.21139	89.02472	41.20	0.01	0.022	110.3	2	6.97	36	24.5	242.7	6.27	6.61	0.34
84	EW-JCPs1-D (210)	Jessore	Chougachha	23.21111	89.09389	41.80	0	0.0050	92.0	0	7.10	-3	25.7	202.9	4.10	5.22	1.12
85	EW-JCPs1-D (215)	Jessore	Chougachha	23.20872	89.09917	26.33	0.03	0.22	63.9	5	6.99	39	24.8	245.5	1.20	5.35	4.15
86	EW-JCSr1-D (198)	Jessore	Chougachha	23.25889	88.98278	43.32	0.06	0.11	38.5	2	7.01	-59	25.7	146.9	3.06	4.69	1.63
87	EW-JCHK1-D (54)	Jessore	Chougachha	23.34583	89.08917	46.62	0	0.0031	44.2	0	7.21	-99	24.8	107.5	3.12	9.40	6.28
88	EW-JCPI1-D (207)	Jessore	Chougachha	23.27833	89.02639	46.00	0.4	0.12	49.9	2	7.12	9	25.4	215.1	3.27	7.62	4.35
89	EW-JCCg1-D (170)	Jessore	Chougachha	23.24750	89.01972	41.60	0.09	0.22	42.7	5	7.00	-55	24.8	151.5	4.00	4.95	0.95
90	EW-JCNr1-D (174)	Jessore	Chougachha	23.29990	88.98889	34.20	0.05	0.062	40.2	2	6.96	-32	26.2	173.5	4.57	8.27	3.70
91	EW-JCJr1-D (218)	Jessore	Chougachha	23.27509	89.07667	32.39	0.6	0.60	56.0	10	7.06	-63	24.8	143.5	4.06	7.39	3.33
92	EW-JCSk1-D (124)	Jessore	Chougachha	23.23389	88.92694	39.30	0.03	0.040	42.7	5	7.07	-18	25.9	187.7	2.05	5.96	3.91
93	EW-JCSk1-D (133)	Jessore	Chougachha	23.27361	88.93833	46.40	0.8	0.40	43.7	5	7.10	-53	25.8	152.8	5.96	7.62	1.66
94	EW-JCSk1-D (198)	Jessore	Chougachha	23.26750	89.11333	22.83	0.6	0.040	46.3	5	7.11	-55	25.7	150.9	5.73	7.40	1.67
95	EW-JCPI1-D (205)	Jessore	Chougachha	23.24844	89.08750	22.71	0.1	0.77	86.1	5	7.06	-65	24.1	142.0	4.07	7.34	3.27
96	EW-JCSg1-D (187)	Jessore	Chougachha	23.23528	89.04667	27.05	0.06	0.044	51.0	5	6.94	-51	24.4	155.8	4.63	7.85	3.22
97	EW-JBNr1-D (72)	Jessore	Bagherpara	23.27583	89.35083	49.50	0	0.016	43.7	5	7.11	24	24.5	230.7	3.29	3.76	0.47
98	EW-JBJd1-D (149)	Jessore	Bagherpara	23.18833	89.37972	44.69	0.01	0.12	49.1	5	7.08	55	25.3	261.2	3.19	3.81	0.62
99	EW-JBRp1-D (54)	Jessore	Bagherpara	23.26065	89.28333	46.40	0	0.00067	38.6	0	7.28	-12	23.9	195.2	3.27	4.62	1.35
100	EW-JBRp1-D (65)	Jessore	Bagherpara	23.24472	89.32111	45.70	0	<0.0005	52.7	0	7.22	2	24.1	209.0	3.18	4.19	1.01

Table 1.1.2

Results of 300 Existing Wells Survey in Dry Season [December 2000 to January 2001] (3/7)

No.	Well No.	District	Thana	Lat. (deg-N)	Long. (deg-E)	Well depth (m)	As by FK (mg/l)	As by AAS (mg/l)	EC (mS/m)	Fe ²⁺ (mg/l)	pH (SU)	ORP (mV)	W-Temp (deg-C)	Eh (mV)	DTW (GL- m)	GL (masl)	GWL (masl)
101	EW-JBh1-D (3)	Jessore	Bagherpara	23.33907	89.26150	52.00	0	<0.0005	47.6	0	7.23	186	24.1	373.0	3.96	4.66	0.70
102	EW-JBh1-D (30)	Jessore	Bagherpara	23.31472	89.26444	51.20	0.01	0.026	52.8	5	7.04	190	23.5	397.4	3.75	5.91	2.16
103	EW-JBB1-D (35)	Jessore	Bagherpara	23.31389	89.29833	47.63	0.05	0.049	51.8	10	6.97	105	23.6	312.4	3.11	4.92	1.81
104	EW-JBB1-D (36)	Jessore	Bagherpara	23.29278	89.26722	47.63	0	0.013	37.8	0	7.32	146	25.1	352.3	4.55	5.72	1.17
105	EW-JBD1-D (91)	Jessore	Bagherpara	23.20111	89.31806	43.73	0	0.0016	91.8	0	7.11	1	24.3	207.9	3.36	3.57	0.21
106	EW-JBBs1-D (117)	Jessore	Bagherpara	23.19250	89.35194	52.09	0.06	0.074	38.2	5	7.05	17	25.9	222.7	3.48	4.62	1.14
107	EW-JBBs1-D (132)	Jessore	Bagherpara	23.15861	89.35068	43.25	0	0.00073	41.8	0.5	7.21	47	25.1	253.3	3.47	3.99	0.52
108	EW-JBDh1-D (108)	Jessore	Bagherpara	23.21889	89.40500	41.70	0.04	0.12	48.1	5	7.12	-4	23.5	203.4	2.65	3.30	0.65
109	EW-JBDh1-D (102)	Jessore	Bagherpara	23.24500	89.38722	40.03	0	0.016	126.0	5	7.05	16	25.5	222.0	3.01	2.99	-0.02
110	EW-JASd1-D (4)	Jessore	Abhaynagar	23.05083	89.39824	47.67	0	0.00065	101.8	0	7.24	13	24.4	219.8	4.43	4.54	0.11
111	EW-JABg1-D (12)	Jessore	Abhaynagar	23.01028	89.44472	45.46	0	<0.0005	52.0	0	7.21	16	24.5	222.7	2.85	4.78	1.93
112	EW-JAMh1-D (49)	Jessore	Abhaynagar	23.09056	89.35852	44.28	0	0.00080	49.5	0	7.15	-56	24.4	150.8	4.25	2.95	-1.29
113	EW-JAMh1-D (58)	Jessore	Abhaynagar	23.07222	89.33556	51.26	0	0.0049	198.6	2	7.10	-54	25.5	152.0	3.63	2.04	-1.59
114	EW-JANa1-D (72)	Jessore	Abhaynagar	23.03111	89.36917	37.43	0.1	0.12	88.1	1	7.20	-83	25.2	143.2	4.65	2.96	-1.69
115	EW-JAR1-D (85)	Jessore	Abhaynagar	22.99833	89.38722	47.91	0	<0.0005	173.3	0	7.53	-74	24.7	132.6	3.27	2.62	-0.65
116	EW-JAPr1-D (92)	Jessore	Abhaynagar	22.96806	89.38917	42.53	0	<0.0005	35.4	0	7.11	-43	24.9	163.4	2.06	1.48	-0.58
117	EW-JASh1-D (37)	Jessore	Abhaynagar	23.00222	89.50361	47.40	0	<0.0005	148.3	0	7.26	16	25.1	222.3	2.93	1.96	-0.96
118	EW-JASd1-D (42)	Jessore	Abhaynagar	22.97167	89.50389	43.85	0	0.0034	159.7	2	7.33	15	25.3	221.2	3.13	2.25	-0.88
119	EW-HJN1-D (136)	Jhenaidah	Jhenaidah Sadar	23.46306	89.16389	46.55	0	0.00065	55.0	0	7.10	-26	25.6	179.9	1.13	6.09	4.96
120	EW-HJN1-D (147)	Jhenaidah	Jhenaidah Sadar	23.46500	89.21398	41.33	0	<0.0005	46.2	0	7.28	-60	25.1	146.3	1.84	5.77	3.93
121	EW-HJSr1-D (133)	Jhenaidah	Jhenaidah Sadar	23.50259	89.16361	39.06	0	0.0013	53.8	0	7.16	-19	25.8	186.8	2.63	5.65	3.02
122	EW-HJH1-D (42)	Jhenaidah	Jhenaidah Sadar	23.56028	89.08306	44.80	0.03	0.029	51.3	5	7.12	-108	26.2	97.5	3.73	8.82	5.09
123	EW-HJGn1-D (55)	Jhenaidah	Jhenaidah Sadar	23.49806	89.07222	40.40	0	<0.0005	59.8	0	7.06	95	24.2	301.9	4.06	8.79	4.73
124	EW-HJGn1-D (96)	Jhenaidah	Jhenaidah Sadar	23.48352	89.07565	47.00	0.01	0.14	86.0	10	7.05	-70	25.6	135.9	3.17	8.93	5.76
125	EW-HJH1-D (231)	Jhenaidah	Jhenaidah Sadar	23.56046	89.26046	37.82	0	0.029	53.4	0	7.30	38	24.5	244.7	2.65	7.65	5.00
126	EW-HJH1-D (240)	Jhenaidah	Jhenaidah Sadar	23.55972	89.30259	46.01	0.01	0.033	90.9	5	7.16	-1	24.6	205.7	3.43	7.18	3.75
127	EW-HJGr1-D (200)	Jhenaidah	Jhenaidah Sadar	23.47556	89.24639	41.44	0	0.00067	51.6	0	7.32	-77	25.1	129.3	3.42	5.54	2.12
128	EW-HJFr1-D (261)	Jhenaidah	Jhenaidah Sadar	23.47704	89.28444	35.45	0	0.015	49.2	2	7.36	-93	25.6	112.9	1.83	4.65	2.82
129	EW-HJMd1-D (19)	Jhenaidah	Jhenaidah Sadar	23.52778	89.01972	38.22	0.03	0.047	83.0	5	7.08	-58	25.3	148.2	1.85	10.12	8.27
130	EW-HJMd1-D (26)	Jhenaidah	Jhenaidah Sadar	23.53417	89.02250	39.70	0.09	0.042	73.2	5	7.15	-82	25.6	123.9	1.66	9.62	7.96
131	EW-HJN1-D (122)	Jhenaidah	Jhenaidah Sadar	23.56333	89.18639	41.90	0	0.0023	46.2	0	7.31	-13	24.2	193.9	3.33	8.59	5.26
132	EW-HJN1-D (125)	Jhenaidah	Jhenaidah Sadar	23.54944	89.18750	19.83	0	0.0051	5.1	2	7.43	111	25.2	317.2	4.46	8.74	4.28
133	EW-HJK1-D (176)	Jhenaidah	Jhenaidah Sadar	23.50898	89.20500	37.90	0	<0.0005	58.7	0	7.12	38	24.9	244.4	2.70	6.06	3.37
134	EW-HJSg1-D (34)	Jhenaidah	Jhenaidah Sadar	23.55028	89.04778	39.90	0.06	0.031	45.0	2	7.22	-89	25.4	117.1	2.13	7.18	5.05
135	EW-HJPD1-D (225)	Jhenaidah	Jhenaidah Sadar	23.54630	89.28556	35.18	0	<0.0005	41.8	0	7.38	-10	24.4	196.8	2.80	7.48	4.88
136	EW-HJPG1-D (114)	Jhenaidah	Jhenaidah Sadar	23.53278	89.14528	48.80	0	0.047	43.9	2	7.20	-52	25.2	154.2	3.35	6.99	3.64
137	EW-HJSD1-D (3)	Jhenaidah	Jhenaidah Sadar	23.52917	88.97417	41.59	0.6	0.22	71.5	5	6.98	-88	25.8	117.8	2.79	10.10	7.31
138	EW-HJMh1-D (88)	Jhenaidah	Jhenaidah Sadar	23.48065	89.10296	41.01	0.01	0.034	55.4	5	7.12	-81	26.8	124.1	3.23	8.60	5.37
139	EW-HJMh1-D (98)	Jhenaidah	Jhenaidah Sadar	23.50037	89.12139	46.60	0.03	0.081	51.7	5	7.12	-81	25.2	145.2	3.33	8.65	5.32
140	EW-HJPr1-D (190)	Jhenaidah	Jhenaidah Sadar	23.56787	89.22111	35.80	0	<0.0005	40.2	0	7.21	-23	25.3	183.2	3.06	8.63	5.57
141	EW-HJPr1-D (251)	Jhenaidah	Jhenaidah Sadar	23.54028	89.25333	42.35	0.02	0.024	55.4	5	7.01	-10	25.2	196.2	2.97	6.11	3.14
142	EW-HJKm1-D (62)	Jhenaidah	Jhenaidah Sadar	23.54750	89.11222	39.80	0.4	0.053	51.8	5	7.14	-68	23.8	139.2	3.34	8.96	5.62
143	EW-HJDg1-D (196)	Jhenaidah	Jhenaidah Sadar	23.49074	89.24167	39.00	0.05	0.087	79.1	5	7.18	3	25.2	209.2	1.82	5.47	3.65
144	EW-HKRg1-D (74)	Jhenaidah	Kaliganj	23.36981	89.13928	45.35	0	0.021	54.2	5	7.02	-75	25.9	130.7	2.92	6.64	3.72
145	EW-HKRk1-D (135)	Jhenaidah	Kaliganj	23.34894	89.10611	38.75	0	0.0018	47.5	5	7.10	-8	25.5	198.0	3.69	8.16	4.47
146	EW-HKJm1-D (89)	Jhenaidah	Kaliganj	23.42222	89.18028	46.71	0	0.00089	76.4	0	7.10	13	27.0	217.9	3.13	7.71	4.58
147	EW-HKJm1-D (101)	Jhenaidah	Kaliganj	23.41713	89.24046	55.60	0.2	0.085	83.4	5	7.17	-34	25.8	171.8	2.41	4.57	2.16
148	EW-HKK1-D (115)	Jhenaidah	Kaliganj	23.40806	89.21426	40.85	0	0.013	77.3	2	7.35	-3	25.6	202.9	2.82	8.25	3.43
149	EW-HKK1-D (173)	Jhenaidah	Kaliganj	23.37676	89.23611	28.50	0	<0.0005	81.3	0	7.15	-88	26.9	137.0	2.77	5.82	3.05
150	EW-HKTh1-D (45)	Jhenaidah	Kaliganj	23.38778	89.06861	46.30	0	0.022	51.9	2	7.18	-93	25.2	113.2	3.63	8.02	4.39

Table 1.1.2

Results of 300 Existing Wells Survey in Dry Season [December 2000 to January 2001] (4/7)

No.	Well No.	District	Thana	Lat. (deg-N)	Long. (deg-E)	Well depth (m)	As by FK (mg/l)	As by AAS (mg/l)	EC (mS/m)	Fe ²⁺ (mg/l)	pH (SU)	ORP (mV)	W-Temp (deg-C)	Eh (mV)	DTW (GL-m)	GL (masl)	GWL (masl)
151	EW-HKKI1-D (28)	Jhenaidah	Kaiganj	23.40889	89.13583	41.45	0	0.00056	54.1	0	7.17	-11	28.1	194.6		8.12	
152	EW-HKKS1-D (152)	Jhenaidah	Kaiganj	23.31343	89.11333	45.80	0	<0.0005	75.3	0.5	7.21	-72	25.2	134.2	3.81	8.18	4.37
153	EW-HKSm1-D (40)	Jhenaidah	Kaiganj	23.38167	89.10194	44.40	0	0.015	49.4	5	7.10	-66	25.5	140.0	3.08	7.49	4.41
154	EW-HKMI1-D (180)	Jhenaidah	Kaiganj	23.34509	89.21491	44.67	0.01	0.030	40.7	5	7.15	-65	25.0	141.4	3.61	4.92	1.31
155	EW-HKSd1-D (9)	Jhenaidah	Kaiganj	23.43389	89.13694	44.80	0	<0.0005	54.4	0	7.74	-95	23.5	112.4		7.65	
156	EW-HKBr1-D (164)	Jhenaidah	Kaiganj	23.32574	89.14741	47.00	0	0.023	54.4	5	7.15	-61	25.6	144.9	3.85	7.32	3.47
157	EW-HKBr1-D (195)	Jhenaidah	Kaiganj	23.29463	89.18250	35.30	0.05	0.096	51.0	5	7.24	-68	25.3	138.2	3.63	7.35	3.72
158	EW-HKNm1-D (32)	Jhenaidah	Kaiganj	23.40074	89.18352	45.42	0	0.00079	54.2	0	7.13	-39	24.3	167.9	3.07	7.25	4.18
159	EW-HKNm1-D (123)	Jhenaidah	Kaiganj	23.36898	89.18537	44.31	0.01	0.0052	89.4	5	6.96	11	24.7	217.6	3.68	5.04	1.36
160	EW-HTEI1-D (75)	Jhenaidah	Kotchandpur	23.43528	89.04917	40.10	0	0.013	110.2	10	7.08	-92	24.8	114.5	2.16	7.66	5.50
161	EW-HTKs1-D (32)	Jhenaidah	Kotchandpur	23.43833	88.99028	41.15	0.01	0.037	45.9	5	7.28	-35	28.3	170.4	3.11	9.29	6.18
162	EW-HTKI1-D (50)	Jhenaidah	Kotchandpur	23.46500	89.01111	50.65	0	<0.0005	51.5	0	7.22	-34	25.5	172.0	2.63	8.53	5.90
163	EW-HTKI1-D (46)	Jhenaidah	Kotchandpur	23.41222	89.00917	30.20	0	0.014	68.2	2	7.30	-83	24.8	123.5	3.18	9.08	5.90
164	EW-HTDr1-D (13)	Jhenaidah	Kotchandpur	23.48806	88.98167	43.85	0.8	0.25	78.3	5	7.15	-115	25.2	91.2	2.10	8.47	6.37
165	EW-HTDr1-D (18)	Jhenaidah	Kotchandpur	23.47722	88.95000	21.40	0	0.069	81.3	10	7.08	-127	24.9	79.4	3.15	10.58	7.43
166	EW-HTSb1-D (24)	Jhenaidah	Kotchandpur	23.45407	88.95315	25.80	0.01	0.078	45.2	5	7.13	-76	25.5	130.0	4.43	10.65	6.22
167	EW-HLBr1-D (40)	Jhenaidah	Kotchandpur	23.42222	88.95889	47.25	0	0.017	49.2	1	7.36	-103	24.5	103.7	3.03	6.90	3.87
168	EW-HMNp1-D (26)	Jhenaidah	Moheshpur	23.29324	88.76528	42.05	0	0.032	96.4	5	7.05	-52	25.7	153.9	4.65	7.24	2.59
169	EW-HMKz1-D (13)	Jhenaidah	Moheshpur	23.27111	88.74611	48.22	0.01	0.046	50.0	5	7.07	-80	26.2	125.5	4.69	8.26	3.57
170	EW-HMF1-D (104)	Jhenaidah	Moheshpur	23.40722	88.89583	25.85	0.03	0.092	96.6	10	7.10	-98	25.0	108.4	3.74	6.65	2.91
171	EW-HMMd1-D (139)	Jhenaidah	Moheshpur	23.32167	88.94417	41.70	0.06	0.086	71.3	5	7.21	-62	24.9	144.4	2.81	10.46	7.65
172	EW-HMMd1-D (159)	Jhenaidah	Moheshpur	23.28306	88.95278	42.54	0.3	0.16	39.0	5	6.95	-55	25.5	151.0	4.44	7.87	3.43
173	EW-HMSK1-D (29)	Jhenaidah	Moheshpur	23.33806	88.76944	41.37	0.01	0.048	82.9	5	7.18	-84	26.3	141.4	1.74	8.35	6.61
174	EW-HMBb1-D (48)	Jhenaidah	Moheshpur	23.28528	88.81639	51.75	0.03	0.079	48.1	2	7.12	-48	26.3	157.4	3.72	7.58	3.86
175	EW-HMMh1-D (109)	Jhenaidah	Moheshpur	23.35472	88.91056	45.75	0.05	0.072	42.8	5	7.13	-18	24.7	188.6	4.34	9.41	5.07
176	EW-HMPT1-D (74)	Jhenaidah	Moheshpur	23.36213	88.85657	40.55	0.05	0.084	51.1	5	7.09	-75	24.9	131.4	2.62	6.92	4.30
177	EW-HMAz1-D (152)	Jhenaidah	Moheshpur	23.35661	88.98222	40.70	0.08	0.089	74.8	2	7.18	-48	25.1	158.3	4.50	8.09	3.59
178	EW-HMSd1-D (147)	Jhenaidah	Moheshpur	23.37556	88.94444	39.95	0.01	0.016	51.2	0.5	7.32	-118	25.8	87.8	2.93	8.51	5.58
179	EW-HMSw1-D (34)	Jhenaidah	Moheshpur	23.37315	88.80528	45.10	0.02	0.019	99.6	5	7.15	-69	25.2	137.2	3.25	6.95	3.70
180	EW-HMNI1-D (95)	Jhenaidah	Moheshpur	23.32333	88.88528	42.30	0.2	0.13	52.9	5	7.21	-33	26.1	172.6	3.84	7.68	3.84
181	EW-HMJd1-D (56)	Jhenaidah	Moheshpur	23.27833	88.85222	39.35	0.01	0.024	48.6	1	7.28	-38	25.8	167.8	3.30	6.30	3.00
182	EW-HMJd1-D (90)	Jhenaidah	Moheshpur	23.26167	88.89250	40.45	0.01	0.020	47.3	5	7.01	-44	25.4	250.1	4.39	9.04	4.65
183	EW-HHTI1-D (9)	Jhenaidah	Harinakunda	23.70111	89.04611	41.28	0.03	0.028	51.7	2	7.21	-67	25.2	139.2	3.95	10.60	6.65
184	EW-HHRg1-D (48)	Jhenaidah	Harinakunda	23.64880	89.10287	41.21	0	0.0017	38.6	0	7.37	-54	25.1	152.3	4.44	8.86	4.42
185	EW-HHR1-D (26)	Jhenaidah	Harinakunda	23.66194	89.05528	37.45	0.04	0.083	55.1	2	7.24	-29	25.2	177.2	2.99	9.26	6.27
186	EW-HHBy1-D (4)	Jhenaidah	Harinakunda	23.72778	89.11454	38.20	0.03	0.057	56.6	5	7.16	-80	25.3	126.2	5.04	11.12	6.08
187	EW-HHJr1-D (8)	Jhenaidah	Harinakunda	23.71889	89.07370	38.25	0.05	0.047	55.7	5	7.16	-76	25.0	130.4	4.11	10.28	6.17
188	EW-HHCd1-D (72)	Jhenaidah	Harinakunda	23.60611	89.13111	48.30	0	0.016	38.6	0	7.52	111	24.3	317.9	3.76	7.97	4.21
189	EW-HHDI1-D (33)	Jhenaidah	Harinakunda	23.64435	89.03417	38.28	0	0.00054	47.3	0	7.36	-39	25.3	167.2	2.71	9.26	6.55
190	EW-HHKp1-D (56)	Jhenaidah	Harinakunda	23.58606	89.07676	39.81	0.01	0.030	44.9	2	7.19	-117	24.6	323.7	4.12	9.65	5.53
191	EW-HSSr1-D (54)	Jhenaidah	Sailkupa	23.72917	89.24528	46.70	0	0.0015	68.3	0	7.25	103	25.3	309.2	6.66	9.90	3.24
192	EW-HSFz1-D (89)	Jhenaidah	Sailkupa	23.66844	89.25833	40.35	0.2	0.13	98.8	2	7.08	264	25.7	469.9	5.55	8.07	2.52
193	EW-HSDI1-D (96)	Jhenaidah	Sailkupa	23.66222	89.33667	40.78	0	0.00081	116.2	0	7.31	71	25.8	276.8	6.39	9.26	2.87
194	EW-HSDg1-D (40)	Jhenaidah	Sailkupa	23.69926	89.19593	35.10	0	0.0010	76.9	0	7.37	101	26.1	306.6	5.51	9.26	3.75
195	EW-HSUM1-D (122)	Jhenaidah	Sailkupa	23.64139	89.25056	34.80	0	0.00055	85.8	0	7.04	141	25.3	347.2	2.98	8.04	5.06
196	EW-HSF1-D (133)	Jhenaidah	Sailkupa	23.63528	89.18611	40.55	0	<0.0005	69.7	0	7.27	186	25.8	391.8	5.23	8.93	3.70
197	EW-HSN1-D (155)	Jhenaidah	Sailkupa	23.59250	89.25833	41.37	0	0.00064	48.8	0	7.34	184	25.5	390.0	3.64	6.72	3.08
198	EW-HSN1-D (166)	Jhenaidah	Sailkupa	23.62861	89.27435	39.75	0	<0.0005	87.0	0	7.25	176	26.0	381.6	5.17	8.34	3.17
199	EW-HSHr1-D (88)	Jhenaidah	Sailkupa	23.69056	89.30870	42.34	0.02	0.045	94.4	5	7.12	25	26.1	230.6	6.29	9.68	3.37
200	EW-HSSJ1-D (51)	Jhenaidah	Sailkupa	23.68444	89.24556	40.85	0	0.0090	88.2	0	7.13	183	26.1	388.6	5.01	9.23	4.22

Table 1.1.2

Results of 300 Existing Wells Survey in Dry Season [December 2000 to January 2001] (5/7)

No.	Well No.	District	Thana	Lat. (deg-N)	Long. (deg-E)	Well depth (m)	As by FK (mg/l)	As by AAS (mg/l)	EC (mS/m)	Fe ²⁺ (mg/l)	pH (SU)	ORP (mV)	W-Temp (deg-C)	Eh (mV)	DTW (GL-m)	GL (mas)	GWL (mas)
201	EW-HSAb1-D (177)	Jhenaidah	Sailkupa	23.60917	89.31389	43.64	0	<0.0005	94.6	0	7.49	100	26.2	305.5	5.42	8.08	2.66
202	EW-HSBg1-D (101)	Jhenaidah	Sailkupa	23.62083	89.34806	40.92	0	0.00084	94.9	0	7.26	85	26.2	290.5	4.90	8.17	3.27
203	EW-HSBg1-D (115)	Jhenaidah	Sailkupa	23.64500	89.30250	39.40	0	0.0014	98.7	0	7.21	79	26.3	264.4	5.38	8.65	3.27
204	EW-HSKc1-D (27)	Jhenaidah	Sailkupa	23.74000	89.20500	38.30	0.01	0.020	80.0	2	7.29	54	26.3	259.4	5.50	10.07	4.57
205	EW-HSTb1-D (16)	Jhenaidah	Sailkupa	23.70611	89.15000	45.35	0.01	0.044	48.4	2	7.31	158	25.6	363.9	5.31	9.22	3.91
206	EW-HSMr1-D (9)	Jhenaidah	Sailkupa	23.66509	89.16167	41.70	0	0.039	52.7	0	7.23	-52	26.1	153.6	5.50	10.25	4.75
207	EW-HSDd1-D (145)	Jhenaidah	Sailkupa	23.61083	89.20778	44.54	0.02	0.024	52.3	2	7.29	103	24.8	309.5	3.00	6.79	3.79
208	EW-CAAI 1-D (79)	Chuadanga	Alamdanga	23.76083	88.94361	35.20	0.03	0.043	83.8	10	7.08	-56	26.3	149.4	2.25	12.22	9.97
209	EW-CAAI 1-D (72)	Chuadanga	Alamdanga	23.75042	88.93722	32.49	0.03	0.025	93.2	5	7.11	-45	26.2	160.5	2.66	11.01	8.35
210	EW-CABr 1-D (56)	Chuadanga	Alamdanga	23.75083	88.86426	38.21	0.04	0.043	57.3	2	7.15	40	24.4	246.8	5.63	12.75	7.12
211	EW-CABg 1-D (6)	Chuadanga	Alamdanga	23.78958	88.83792	29.72	0.04	0.065	91.3	10	6.90	-18	25.8	187.8	2.47	12.32	9.85
212	EW-CADu 1-D (78)	Chuadanga	Alamdanga	23.72843	88.96694	37.57	0.01	0.025	60.0	1	7.07	-30	26.0	175.6	2.35	10.68	8.33
213	EW-CAGg 1-D (09)	Chuadanga	Alamdanga	23.76259	88.83454	36.16	0.02	0.053	73.1	5	6.89	-107	25.1	99.3	3.44	12.91	9.47
214	EW-CAGg 1-D (18)	Chuadanga	Alamdanga	23.74306	88.82306	39.26	0	0.022	61.4	1	7.40	-80	25.9	125.7	3.33	12.20	8.87
215	EW-CAHr 1-D (68)	Chuadanga	Alamdanga	23.79083	88.89676	39.81	0	0.0010	62.8	0	7.05	-32	25.3	174.2	3.15	12.41	9.28
216	EW-CAK1 1-D (95)	Chuadanga	Alamdanga	23.79472	88.94597	26.68	0.05	0.046	125.0	5	7.05	-39	25.6	166.9	3.48	13.33	9.85
217	EW-CAJm 1-D (103)	Chuadanga	Alamdanga	23.72000	89.00481	36.58	0	<0.0005	52.2	0	7.24	-60	26.1	145.6	2.65	11.26	8.61
218	EW-CAJh 1-D (30)	Chuadanga	Alamdanga	23.68847	88.87250	36.64	0.02	0.052	68.0	5	7.11	-41	25.5	165.0	5.17	11.35	6.18
219	EW-CAJh 1-D (81)	Chuadanga	Alamdanga	23.73000	88.90667	36.76	0	0.0012	48.8	0	7.36	97	25.9	302.7	3.24	11.96	8.72
220	EW-CAKd 1-D (22)	Chuadanga	Alamdanga	23.72083	88.81056	36.10	0	0.0090	109.0	5	6.94	151	24.5	357.7	3.52	11.72	8.20
221	EW-CAKd 1-D (35)	Chuadanga	Alamdanga	23.71778	88.85583	31.00	0.06	0.066	68.2	5	7.07	7	24.8	213.5	3.96	12.04	8.08
222	EW-CAKs 1-D (116)	Chuadanga	Alamdanga	23.66111	88.97472	36.72	0.03	0.041	71.0	10	7.15	-48	26.2	157.5	2.15	9.45	7.30
223	EW-CAKs 1-D (120)	Chuadanga	Alamdanga	23.63222	88.95694	35.32	0.1	0.066	81.3	10	7.14	-68	26.3	137.4	2.77	10.10	7.33
224	EW-CAKm 1-D (48)	Chuadanga	Alamdanga	23.76847	88.91208	35.30	0.02	0.017	52.0	2	7.10	-40	25.8	165.8	2.53	12.23	9.70
225	EW-CANg 1-D (90)	Chuadanga	Alamdanga	23.66389	88.93528	41.58	0.3	0.24	72.2	10	6.96	-80	26.2	145.5	2.52	10.67	8.15
226	EW-CANg 1-D (119)	Chuadanga	Alamdanga	23.63694	88.95722	63.71	0	0.0011	62.8	0	7.14	8	26.3	213.4	2.63	9.85	7.22
227	EW-CDDm 1-D (34)	Chuadanga	Damurhuda	23.59935	88.70861	37.28	0.01	0.029	34.2	2	7.17	-18	26.3	187.4	4.79	10.41	5.62
228	EW-CDDm 1-D (59)	Chuadanga	Damurhuda	23.60472	88.76542	35.35	0.01	0.042	39.5	1	7.15	-19	25.6	188.9	4.15	11.30	7.15
229	EW-CDDr 1-D (20)	Chuadanga	Damurhuda	23.49250	88.76287	31.58	0.02	0.036	42.4	2	7.32	-52	25.9	153.7	2.21	9.14	6.93
230	EW-CDDr 1-D (75)	Chuadanga	Damurhuda	23.52167	88.79039	30.31	0.06	0.10	45.3	0.5	7.20	-99	25.8	106.8	4.78	8.96	4.18
231	EW-CDHw 1-D (73)	Chuadanga	Damurhuda	23.54972	88.81014	33.43	0.4	0.18	74.4	2	7.02	-123	24.2	83.9	3.00	10.93	7.93
232	EW-CDHw 1-D (68)	Chuadanga	Damurhuda	23.57694	88.79472	37.92	0.3	0.068	88.2	2	7.25	-94	26.1	111.6	4.24	11.73	7.49
233	EW-CDJr 1-D (51)	Chuadanga	Damurhuda	23.68194	88.78694	36.50	0	<0.0005	116.0	0	7.07	-64	25.8	141.8	4.07	11.70	7.63
234	EW-CDKp 1-D (7)	Chuadanga	Damurhuda	23.57139	88.67431	34.86	0.01	0.0095	50.4	5	7.08	-28	26.4	177.4	4.15	10.90	6.75
235	EW-CDKr 1-D (26)	Chuadanga	Damurhuda	23.51972	88.72222	31.65	0	0.0054	126.2	2	6.91	-90	26.1	115.6	6.15	9.41	3.26
236	EW-CDKr 1-D (29)	Chuadanga	Damurhuda	23.55167	88.73111	34.00	0.01	0.014	74.2	0.5	7.04	-39	26.2	166.5	6.39	11.42	5.03
237	EW-CDNi 1-D (41)	Chuadanga	Damurhuda	23.65306	88.71083	32.81	0	0.010	86.2	5	6.99	-44	26.2	161.5	4.62	10.76	6.14
238	EW-CDNi 1-D (43)	Chuadanga	Damurhuda	23.63472	88.70361	40.73	0.04	0.055	101.2	5	6.93	-30	26.1	175.8	2.93	9.60	6.67
239	EW-CCAI 1-D (1)	Chuadanga	Chuadanga Sadar	23.66963	88.81944	32.31	0.01	0.024	33.8	1	7.34	-28	25.7	177.9	4.99	12.05	7.06
240	EW-CCBg 1-D (18)	Chuadanga	Chuadanga Sadar	23.55389	88.86306	37.22	0	0.028	47.8	5	7.32	-79	25.9	126.7	2.59	11.42	8.83
241	EW-CCBg 1-D (68)	Chuadanga	Chuadanga Sadar	23.51306	88.88528	35.67	0.01	0.051	50.0	5	7.14	-78	26.0	127.6	2.46	10.20	7.74
242	EW-CCK1 1-D (78)	Chuadanga	Chuadanga Sadar	23.59213	88.93806	25.48	0.6	0.18	55.2	10	7.09	-99	25.4	107.1	3.34	10.72	7.38
243	EW-CCK1 1-D (91)	Chuadanga	Chuadanga Sadar	23.56819	88.97653	44.22	0	<0.0005	77.4	0	7.20	-78	24.8	128.5	3.30	10.35	7.05
244	EW-CCMm 1-D (47)	Chuadanga	Chuadanga Sadar	23.65139	88.89556	46.55	0.05	0.055	54.2	2	7.08	115	24.3	321.9	2.16	10.83	8.67
245	EW-CCPd 1-D (53)	Chuadanga	Chuadanga Sadar	23.61583	88.86347	31.72	0.01	0.039	99.5	10	7.07	-76	26.1	129.6	3.93	10.74	6.81
246	EW-CCPd 1-D (81)	Chuadanga	Chuadanga Sadar	23.80519	88.93111	31.23	0.3	0.088	86.9	5	7.15	-123	26.4	82.4	2.69	11.40	8.71
247	EW-CCCd 1-D (5)	Chuadanga	Chuadanga Sadar	23.63056	88.81157	35.47	0.05	0.076	50.6	10	7.01	-102	26.2	103.5	5.94	11.52	5.58
248	EW-CCCd 1-D (41)	Chuadanga	Chuadanga Sadar	23.63111	88.85917	34.85	0	0.026	45.7	2	7.11	-97	26.0	108.6	4.14	11.64	7.51
249	EW-CCSk 1-D (33)	Chuadanga	Chuadanga Sadar	23.58306	88.85833	42.43	0	<0.0005	44.4	0	7.18	-71	25.9	134.7	3.58	10.59	7.01
250	EW-CCSk 1-D (35)	Chuadanga	Chuadanga Sadar	23.58917	88.88556	30.95	0	0.077	45.5	2	7.10	-60	26.1	145.6	2.45	9.63	7.18

Table 1.1.3 Results of 300 Existing Well Survey (Rainy Season)

Analyte	pH	Temperature	Conductivity	Hardness	TDS	Nitrate	Nitrite	Ammonium	Dissolved Mn	Sulfate	Dissolved Fe	Chloride	Bicarbonate	Calcium	Magnesium	Sodium	Potassium	Fluoride	Cadmium	Total Cr	Copper	Cyanide	Lead	Mercury	Nickel	Zinc	COD
Method	pH meter	Thermo meter	Conductivity meter	Standard	Standard	SP	SP	SP	FAAS	SP	FAAS	SP	Titration	FAAS	FAAS	FAAS	FAAS	SP	Extraction/FAAS	Extraction/FAAS	Extraction/FAAS	SP	Extraction/FAAS	Extraction/FAAS	Extraction/FAAS	Extraction/FAAS	Titration
Practical Quantitation Limit	0	0 Deg C	0.02	0.5	0.13	0.2	0.02	0.1	0.08	5	0.2	0.6	20	0.5	0.05	0.05	0.1	0.1	0.0015	0.025	0.005	0.01	0.005	0.001	0.005	0.005	20
Unit		Deg C	mS/m	mg CaCO3/L	mg/L	mg/L	mg/L	mg/L	mg/L	mg/L	mg/L	mg/L	mg CaCO3/L	mg/L	mg/L	mg/L	mg/L	mg/L	mg/L	mg/L	mg/L	mg/L	mg/L	mg/L	mg/L	mg/L	mg/L
Sample No	pH	Temp	EC	Hardness	TDS	NO3	NO2	NH4	Mn	SO4	Fe	Cl	HCO3	Ca	Mg	Na	K	F	Cd	Cr	Cu	CN	Pb	Hg	Ni	Zn	COD
Existing Wells																											
EW-HJMd-R-[19]	7.00	26.4	70.2	166	449	0.80	<PQL	4.6	0.20	<PQL	11	1.8	460	140	31	21	1.9	0.53	<PQL	<PQL	<PQL	<PQL	0.013	<PQL	0.022	<PQL	<PQL
EW-JJDa-R-[38]	7.10	26.3	71.9	124	460	1.2	0.20	<PQL	0.91	<PQL	<PQL	10	460	100	27	34	1.3	1.1	<PQL	0.036	<PQL	<PQL	<PQL	<PQL	<PQL	<PQL	<PQL
EW-CDNI-R-[43]	7.00	26.3	101	193	646	16	2.8	0.11	0.45	36	0.57	43	500	160	34	26	3.6	0.48	0.0019	0.061	<PQL	<PQL	0.012	<PQL	0.048	<PQL	<PQL
EW-CDHw-R-[73]	7.20	26.2	68.3	141	437	0.36	0.26	3.4	0.93	<PQL	0.44	1.5	400	120	22	43	3.7	0.59	<PQL	0.050	<PQL	<PQL	0.017	<PQL	0.030	<PQL	<PQL
EW-JARj-R-[85]	7.20	26.3	158	75.6	1010	0.24	<PQL	0.11	0.44	<PQL	0.25	220	720	54	21	290	0.81	1.0	<PQL	0.066	<PQL	<PQL	<PQL	<PQL	<PQL	<PQL	<PQL
EW-JBBs-R-[117]	7.10	26.1	52.3	119	334	<PQL	<PQL	1.6	0.76	<PQL	<PQL	2.3	320	99	20	9.0	1.6	0.50	0.0023	0.087	<PQL	<PQL	<PQL	<PQL	0.040	<PQL	<PQL
EW-HJNi-R-[147]	7.20	26.3	54.1	94.2	346	<PQL	<PQL	0.12	0.56	<PQL	0.36	20	340	69	25	15	1.4	0.61	<PQL	0.11	<PQL	0.017	<PQL	<PQL	0.0063	<PQL	<PQL
EW-HHhR-R-[26]	7.28	22.9	73.1	138	468	<PQL	0.25	<PQL	0.88	18	0.74	21	402	110	27	14	2.6	0.33	<PQL	0.10	<PQL	0.013	<PQL	<PQL	<PQL	<PQL	<PQL
EW-CJUt-R-[31]	7.10	26.6	51.7	115	331	1.1	<PQL	0.13	0.27	<PQL	0.59	6.8	340	110	6.1	21	1.4	0.40	<PQL	0.13	<PQL	0.015	<PQL	<PQL	0.047	<PQL	<PQL
EW-CCSk-R-[35]	7.00	26.4	59.9	74.9	383	1.4	<PQL	<PQL	0.64	<PQL	1.5	14	200	53	22	11	3.1	0.43	0.0051	0.14	<PQL	0.014	0.030	<PQL	0.069	0.051	<PQL
EW-HTKl-R-[46]	8.30	26.4	26.6	154	170	1.4	<PQL	0.11	0.20	6.5	1.2	13	360	130	23	8.0	3.4	0.52	0.0027	0.14	<PQL	0.010	<PQL	<PQL	0.035	0.024	<PQL
EW-CAAI-R-[72]	7.10	26.2	91.2	167	584	1.7	<PQL	0.10	0.38	8.2	0.92	26	460	140	25	19	4.0	0.35	0.0030	0.14	<PQL	0.014	<PQL	<PQL	0.038	0.011	<PQL
EW-HKRg-R-[74]	6.80	26.2	69.5	93.8	445	2.7	<PQL	<PQL	0.21	<PQL	5.0	15	240	82	12	16	1.9	0.40	0.0035	0.17	<PQL	<PQL	<PQL	<PQL	0.022	<PQL	<PQL
EW-JSBn-R-[88]	6.80	26.4	65.1	93.0	417	2.5	<PQL	0.11	0.36	<PQL	3.2	14	280	69	24	11	2.2	0.48	0.0039	0.17	<PQL	<PQL	<PQL	<PQL	0.048	0.047	<PQL
EW-HMNI-R-[95]	6.90	26.2	77.2	128	494	0.76	<PQL	3.2	0.36	<PQL	3.5	4.4	440	100	25	10	3.6	0.37	0.0052	0.17	<PQL	<PQL	<PQL	<PQL	0.026	<PQL	<PQL
EW-JKPj-R-[102]	6.80	26.1	258	164	1650	180	4.2	12	<PQL	<PQL	3.0	330	460	120	45	170	8.9	1.2	0.0073	0.18	<PQL	<PQL	<PQL	<PQL	0.065	0.016	160
EW-JHNn-R-[105]	6.70	26.0	63.0	107	403	11	3.2	0.10	0.14	<PQL	7.3	1.2	280	84	23	12	3.0	0.53	0.0076	0.20	0.0086	0.012	<PQL	<PQL	0.057	<PQL	39
EW-JMDk-R-[124]	7.10	23.0	93.3	48.1	467	<PQL	<PQL	4.6	<PQL	<PQL	2.2	53	420	13	35	95	4.8	1.1	0.0079	0.19	<PQL	<PQL	<PQL	<PQL	0.043	<PQL	39
EW-HSFI-R-[133]	6.90	25.8	65.7	117	420	0.30	<PQL	<PQL	0.69	7.6	0.34	2.4	360	90	27	16	1.3	0.50	<PQL	0.20	<PQL	<PQL	<PQL	<PQL	<PQL	<PQL	<PQL
EW-JJlc-R-[170]	7.10	25.8	40.1	125	257	0.71	<PQL	<PQL	0.74	<PQL	0.50	11	504	93	31	48	1.2	0.63	<PQL	0.21	<PQL	<PQL	<PQL	<PQL	0.0059	0.024	79
EW-HSAb-R-[177]	6.90	26.1	88.3	48.5	565	0.31	<PQL	0.11	0.76	<PQL	<PQL	24	340	33	15	52	2.7	0.49	<PQL	0.22	<PQL	<PQL	<PQL	<PQL	<PQL	<PQL	<PQL
EW-JMCI-R-[201]	6.20	26.2	78.0	109	499	3.1	<PQL	5.6	0.098	<PQL	2.6	94	280	83	27	27	3.0	0.64	<PQL	0.22	<PQL	<PQL	<PQL	<PQL	<PQL	0.015	<PQL
EW-JCPT-R-[207]	6.80	26.0	72.6	112	465	8.5	3.6	<PQL	0.30	<PQL	2.4	10	360	87	25	13	4.2	0.47	<PQL	0.22	<PQL	<PQL	<PQL	<PQL	0.0063	<PQL	<PQL
Production Wells																											
EW-HTKl-R-(PTW-2)	7.14	23.6	68.7	119	440	0.89	0.21	0.11	0.68	7.2	0.25	13	410	87	33	17	1.8	0.62	<PQL	<PQL	<PQL	<PQL	<PQL	<PQL	<PQL	0.021	<PQL
EW-CCCd-R-(PTW-2B)	7.09	23.5	69.3	123	444	<PQL	<PQL	1.1	0.19	<PQL	1.1	35	360	97	26	19	3.2	0.55	<PQL	<PQL	<PQL	<PQL	<PQL	<PQL	<PQL	<PQL	<PQL
EW-HJjn-R-(PTW-3)	7.01	23.4	54.1	73	346	2.9	0.24	0.27	0.43	7.6	<PQL	4.1	340	61	12	24	2.1	0.56	<PQL	<PQL	<PQL	<PQL	<PQL	<PQL	<PQL	0.019	<PQL
EW-JJjs-R-(PTW-15)	7.09	23.2	101	114	644	<PQL	<PQL	0.10	0.29	8.9	0.73	110	480	82	31	59	2.7	0.41	<PQL	<PQL	<PQL	<PQL	<PQL	<PQL	<PQL	0.053	<PQL
EW-HMMh-R-(PTW-1)	7.12	23.7	53.0	102	339	4.5	0.17	1.2	<PQL	<PQL	1.5	3.0	330	83	20	8.7	2.8	0.27	<PQL	<PQL	<PQL	<PQL	<PQL	<PQL	<PQL	0.069	<PQL
EW-HKki-R-(PTW-2)	7.12	23.6	67.8	111	434	7.4	1.1	<PQL	0.50	<PQL	0.48	16	380	86	25	10	2.2	0.30	<PQL	<PQL	<PQL	<PQL	<PQL	<PQL	<PQL	0.054	<PQL
EW-HSSI-R-(PTW-1)	7.09	23.4	75.4	128	483	<PQL	<PQL	0.18	<PQL	<PQL	<PQL	4.6	490	93	35	32	3.2	0.39	<PQL	<PQL	<PQL	0.010	<PQL	<PQL	<PQL	0.028	<PQL

Excess of WHO guideline Excess of Bangladesh Standard Excess of both Bangladesh Standard and WHO guideline
 (The values were determined as exceeding the standards before rounding off)

Table 1.1.4 Results of 300 Existing Well Survey (Dry Season)

Analyte Method	pH	Temperature	Conductivity	Hardness	TDS	Nitrate	Nitrite	Ammonium	Dissolved Mn	Sulfate	Dissolved Fe	Chloride	Bicarbonate	Calcium	Magnesium	Sodium	Potassium	Fluoride	Cadmium	Total Cr	Copper	Cyanide	Lead	Mercury	Nickel	Zinc	COD	
Method	pH meter	Thermo meter	Conductivity meter	Standard	Standard	SP	SP	SP	FAAS	SP	FAAS	SP	Titration	FAAS	FAAS	FAAS	FAAS	SP	Extractio n/ FAAS	Extractio n/ FAAS	Extractio n/ FAAS	SP	Extractio n/ FAAS	Extractio n/ FAAS	Extractio n/ FAAS	Extractio n/ FAAS	Titration	
Practical Quantitation Limit	0	0 Deg C	0.02	0.5	0.13	0.2	0.02	0.1	0.08	5	0.2	0.6	20	0.5	0.05	0.05	0.1	0.1	0.0015	0.025	0.005	0.01	0.005	0.001	0.005	0.005	20	
Unit		Deg C	mS/m	mg CaCO3/L	mg/L	mg/L	mg/L	mg/L	mg/L	mg/L	mg/L	mg/L	mg CaCO3/L	mg/L	mg/L	mg/L	mg/L	mg/L	mg/L	mg/L	mg/L	mg/L	mg/L	mg/L	mg/L	mg/L	mg/L	
Sample No	pH	Temp	EC	Hardness	TDS	NO3	NO2	NH4	Mn	SO4	Fe	Cl	HCO3	Ca	Mg	Na	K	F	Cd	Cr	Cu	CN	Pb	Hg	Ni	Zn	COD	
Existing Wells																												
EW-HJMd-D-[19]	6.72	24.6	83.7	118	536	<PQL	<PQL	12	0.18	<PQL	8.1	1.1	448	96	22	10	2.6	0.35	<PQL	<PQL	<PQL	<PQL	<PQL	<PQL	<PQL	<PQL	<PQL	
EW-JJDa-D-[38]	7.14	24.4	81.3	102	520	0.31	0.020	6.6	1.5	<PQL	0.84	4.5	456	72	31	40	1.7	1.3	<PQL	<PQL	<PQL	<PQL	0.010	<PQL	0.0062	0.037	<PQL	
EW-CDNt-D-[43]	7.09	23.7	100	161	642	2.0	3.3	7.8	0.88	46	3.4	13	463	130	30	36	4.0	0.58	<PQL	<PQL	<PQL	<PQL	<PQL	<PQL	<PQL	<PQL	33	
EW-CDHw-D-[73]	7.13	23.6	68.5	119	438	<PQL	<PQL	13	1.3	<PQL	3.3	3.0	426	100	18	30	3.4	0.40	<PQL	<PQL	<PQL	<PQL	<PQL	<PQL	<PQL	<PQL	<PQL	
EW-JARj-D-[85]	7.11	24.4	184	66.2	1180	<PQL	0.020	7.1	0.42	<PQL	1.1	240	700	48	18	330	1.3	1.0	<PQL	<PQL	<PQL	<PQL	<PQL	<PQL	<PQL	0.0072	<PQL	<PQL
EW-JBBs-D-[117]	6.93	23.8	58.6	84.6	375	<PQL	<PQL	9.2	0.23	<PQL	1.3	0.71	315	69	16	4.3	2.1	0.43	<PQL	<PQL	<PQL	0.013	<PQL	<PQL	0.0077	<PQL	<PQL	
EW-HJNl-D-[147]	7.19	24.5	60.6	78.9	388	<PQL	<PQL	4.7	0.52	<PQL	1.2	2.2	328	59	20	12	1.7	0.55	<PQL	<PQL	<PQL	<PQL	0.0094	<PQL	0.0053	<PQL	<PQL	
EW-HHHr-D-[26]	7.13	24.6	78.7	107	504	<PQL	0.47	7.4	0.98	20	2.5	18	383	90	17	7.8	2.9	0.41	<PQL	<PQL	<PQL	0.014	0.012	<PQL	<PQL	<PQL	<PQL	
EW-CJUt-D-[31]	7.24	23.8	61.1	109	391	0.98	0.64	6.5	0.42	<PQL	1.4	7.7	319	90	19	15	3.8	0.28	<PQL	<PQL	<PQL	0.014	<PQL	<PQL	<PQL	<PQL	<PQL	
EW-CCSk-D-[35]	7.16	24.1	65.8	112	421	1.5	0.26	8.4	1.0	<PQL	2.6	12	324	93	19	4.3	3.6	0.28	<PQL	<PQL	<PQL	0.010	<PQL	<PQL	<PQL	<PQL	<PQL	
EW-HTKl-D-[46]	7.45	23.9	70.0	104	445	<PQL	<PQL	5.6	0.18	7.2	2.1	24	352	86	19	1.5	3.9	0.46	<PQL	<PQL	<PQL	0.015	<PQL	<PQL	<PQL	<PQL	<PQL	
EW-CAAl-D-[72]	7.42	24.1	90.7	150	581	1.4	0.020	6.3	0.74	14	2.5	24	410	120	25	22	3.9	0.31	<PQL	<PQL	<PQL	<PQL	<PQL	<PQL	0.0057	<PQL	<PQL	
EW-HKRg-D-[74]	7.11	24.5	77.0	110	493	1.8	1.2	7.1	0.26	<PQL	4.9	14	387	89	21	8.6	2.7	0.31	<PQL	<PQL	<PQL	0.010	<PQL	<PQL	<PQL	0.017	<PQL	
EW-JSBn-D-[88]	6.89	24.3	60.5	96.0	387	<PQL	<PQL	9.7	0.45	<PQL	2.7	11	333	76	20	10	1.8	0.35	<PQL	<PQL	<PQL	<PQL	<PQL	<PQL	<PQL	0.020	<PQL	
EW-HMNI-D-[95]	6.85	24.5	81.1	105	520	<PQL	<PQL	11	0.28	8.1	4.7	1.9	444	80	24	19	3.2	0.26	<PQL	<PQL	<PQL	<PQL	<PQL	<PQL	0.0072	<PQL	30	
EW-JKPj-D-[102]	7.03	24.4	227	119	1450	<PQL	<PQL	20	0.41	<PQL	1.3	570	546	82	37	400	6.7	1.7	<PQL	<PQL	<PQL	<PQL	<PQL	<PQL	0.0064	0.10	85	
EW-JHNn-D-[105]	6.87	24.2	66.0	98.7	423	<PQL	<PQL	9.1	0.44	<PQL	3.1	1.1	370	79	20	10	2.6	0.20	<PQL	<PQL	<PQL	0.016	0.0070	<PQL	<PQL	<PQL	<PQL	
EW-JMDk-D-[124]	6.93	24.7	105	98.8	672	<PQL	<PQL	15	0.46	<PQL	2.6	50	463	69	30	81	3.8	0.57	<PQL	<PQL	<PQL	<PQL	0.011	<PQL	0.0066	<PQL	24	
EW-HSFl-D-[133]	7.21	23.7	70.7	115	453	<PQL	<PQL	8.2	1.0	<PQL	0.26	3.0	389	94	21	24	1.2	0.45	<PQL	<PQL	<PQL	<PQL	<PQL	<PQL	<PQL	<PQL	<PQL	
EW-JJlc-D-[170]	7.13	24.5	92.8	109	594	<PQL	<PQL	4.9	1.2	<PQL	1.2	15	481	79	30	59	1.3	0.70	<PQL	<PQL	<PQL	<PQL	<PQL	<PQL	0.0052	0.013	<PQL	
EW-HSAb-D-[177]	7.07	23.8	100	138	627	<PQL	<PQL	5.9	0.93	<PQL	0.42	22	463	110	31	37	2.5	0.48	<PQL	<PQL	<PQL	0.011	<PQL	<PQL	0.0092	<PQL	<PQL	
EW-JMCl-D-[201]	6.81	24.5	75.6	97.9	484	<PQL	<PQL	16	0.45	<PQL	1.7	0.98	407	77	21	21	2.6	0.28	<PQL	<PQL	<PQL	<PQL	0.037	<PQL	<PQL	<PQL	24	
EW-JCPt-D-[207]	7.01	24.9	77.8	117	499	<PQL	<PQL	11	0.43	<PQL	3.1	9.2	407	99	18	11	3.9	0.32	<PQL	<PQL	<PQL	<PQL	<PQL	<PQL	0.0079	<PQL	<PQL	
Production Wells																												
EW-HTKl-D-(PTW-2)	7.05	24.6	77.7	107	497	<PQL	<PQL	7.6	0.75	<PQL	1.4	12	416	79	28	24	2.8	0.57	<PQL	<PQL	<PQL	<PQL	<PQL	<PQL	<PQL	<PQL	<PQL	
EW-CCCD-D-(PTW-2B)	7.01	24.0	81.9	111	524	0.95	<PQL	8.2	0.60	30	1.4	45	352	92	19	22	4.3	0.55	<PQL	<PQL	<PQL	<PQL	<PQL	<PQL	<PQL	<PQL	<PQL	
EW-HJJn-D-(PTW-3)	6.99	24.5	63.9	91.0	409	<PQL	0.050	7.2	0.46	<PQL	1.6	3.1	333	73	18	14	3.3	0.28	<PQL	<PQL	<PQL	<PQL	0.021	<PQL	<PQL	<PQL	<PQL	
EW-JJJs-D-(PTW-15)	7.03	24.6	112	111	718	<PQL	<PQL	4.8	0.20	<PQL	1.4	110	444	82	29	92	3.5	0.41	<PQL	<PQL	<PQL	0.010	<PQL	<PQL	<PQL	0.0055	<PQL	
EW-HMMh-D-(PTW-1)	7.08	24.0	59.7	91.1	382	1.8	<PQL	7.7	0.23	<PQL	2.0	3.8	305	77	14	8.3	3.9	0.24	<PQL	<PQL	<PQL	0.012	<PQL	<PQL	<PQL	0.016	<PQL	
EW-HKKI-D-(PTW-2)	7.32	24.5	77.4	114	495	0.91	0.35	8.1	0.12	<PQL	2.6	3.6	426	92	21	6.1	2.7	0.26	<PQL	<PQL	<PQL	0.018	0.047	<PQL	<PQL	0.015	<PQL	
EW-HSSI-D-(PTW-1)	6.99	23.9	93.0	147	595	0.83	<PQL	8.2	0.62	<PQL	0.67	5.7	509	110	33	29	3.3	0.44	<PQL	<PQL	0.0081	<PQL	<PQL	<PQL	0.0061	0.0087	<PQL	

Excess of WHO guideline Excess of Bangladesh Standard Excess of both Bangladesh Standard and WHO guideline
 (The values were determined as exceeding the standards before rounding off)