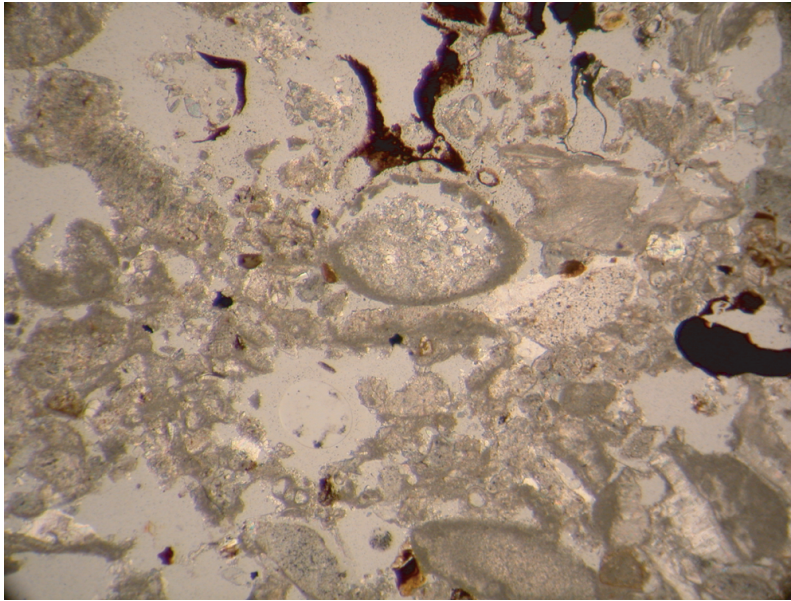
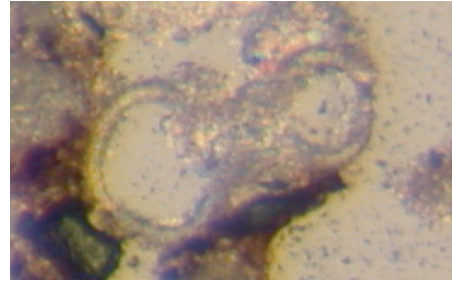
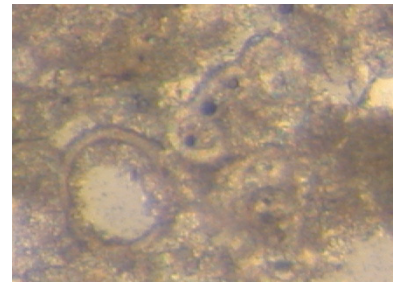


(7) MS11海山 (02SMS11) , コアBMS03C , 試料FR02 (02SMS11-BMS03C-FR02)

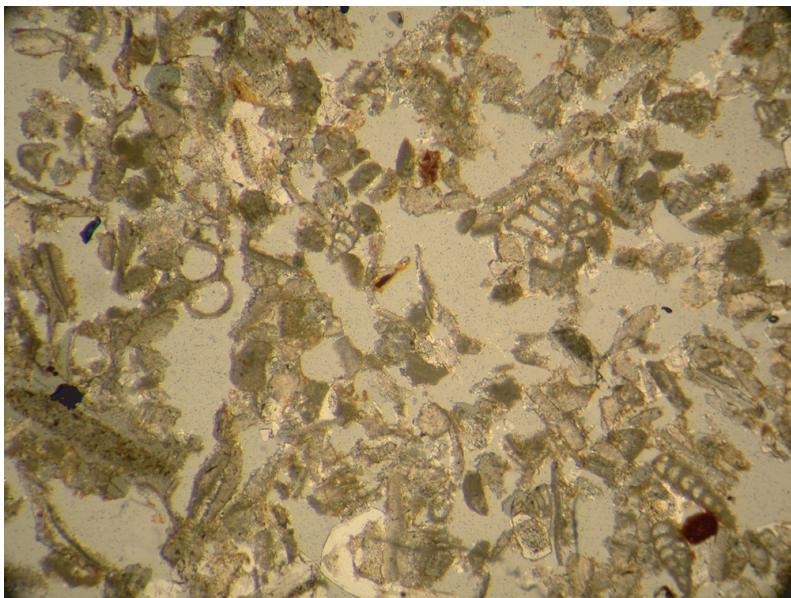


Hedbergella ? spp.

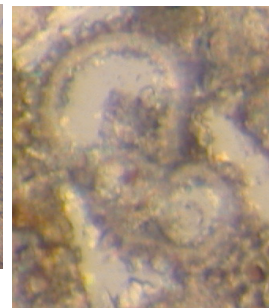
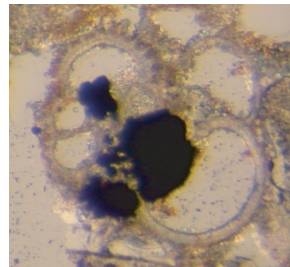


100μm

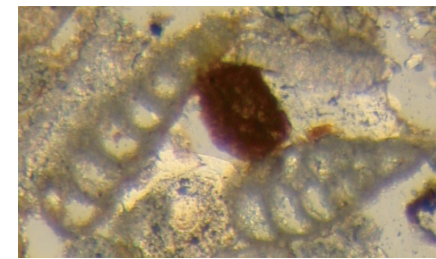
(8) MS11海山 (02SMS11) , コアBMS04B , 試料FR01 (02SMS11-BMS04B-FR01)



Hedbergella ? spp.

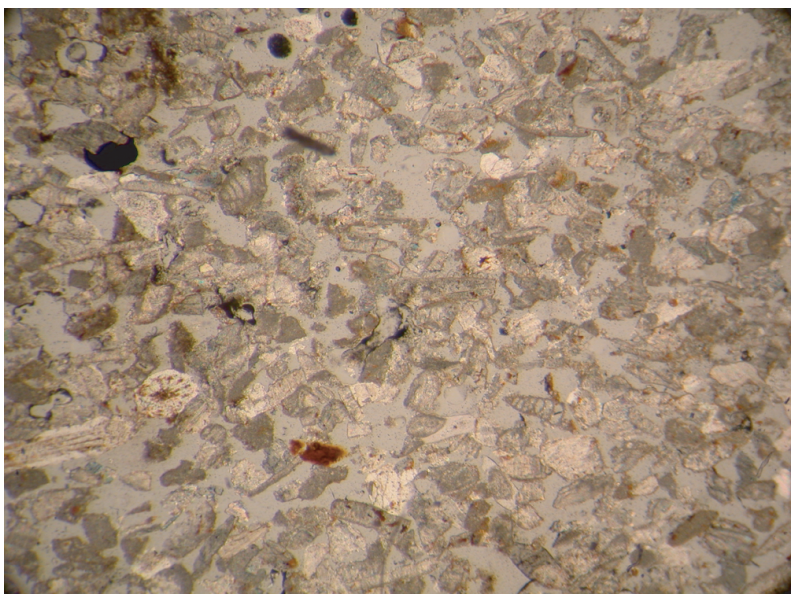


Benthic foraminifera

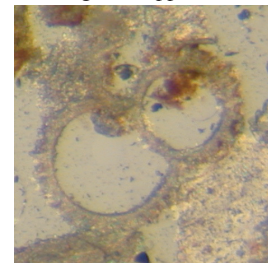


100μm

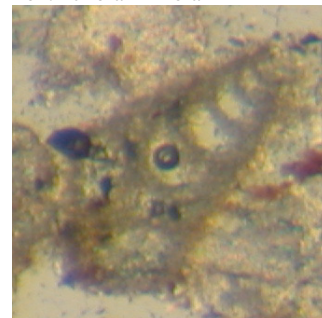
(9) MS11海山 (02SMS11) , コアBMS04B , 試料FR02 (02SMS11-BMS04B-FR02)



Hedbergella ? spp.



Benthic foraminifera



100μm